

We are committed to providing [accessible customer service](#).  
If you need accessible formats or communications supports, please [contact us](#).

Nous tenons à améliorer [l'accessibilité des services à la clientèle](#).  
Si vous avez besoin de formats accessibles ou d'aide à la communication, veuillez [nous contacter](#).



**CANADIAN EXPLORATION SERVICES LTD**

PO Box 219, 14579 Government Road, Larder Lake, Ontario, P0K 1L0, Canada  
Phone (705) 643-2345 Fax (705) 643-2191 www.cxsltd.com

---

# **TIGER GOLD EXPLORATION CORPORATION**

## **Spectrometer Survey Over the HARKER HERITAGE PROPERTY AREA 10**

### **Clifford, Elliot, Harker, Hol- loway, Tannahill and Marriott Townships, Ontario**

---

---

## TABLE OF CONTENTS

<b>1.</b>	<b>SURVEY DETAILS .....</b>	<b>3</b>
1.1	PROJECT NAME .....	3
1.2	CLIENT .....	3
1.3	LOCATION .....	3
1.4	ACCESS .....	4
1.5	SURVEY AREA .....	4
<b>2.</b>	<b>SURVEY WORK UNDERTAKEN .....</b>	<b>5</b>
2.1	SURVEY LOG .....	5
2.2	PERSONNEL .....	5
2.3	SURVEY SPECIFICATIONS .....	5
<b>3.</b>	<b>OVERVIEW OF SURVEY RESULTS .....</b>	<b>6</b>
3.1	SUMMARY .....	6

---

## LIST OF APPENDICES

<b>APPENDIX A: STATEMENT OF QUALIFICATIONS</b>
<b>APPENDIX B: THEORETICAL BASIS AND SURVEY PROCEDURES</b>
<b>APPENDIX C: INSTRUMENT SPECIFICATIONS</b>
<b>APPENDIX D: LIST OF MAPS (IN MAP POCKET)</b>

---

## LIST OF TABLES AND FIGURES

Figure 1: Location of the Harker Heritage Property.....	3
Figure 2: Spectrometer Readings .....	6
Table 1: Survey Log.....	5

## 1. SURVEY DETAILS

### 1.1 PROJECT NAME

This project is known as the **Harker Heritage Property – Area 10**.

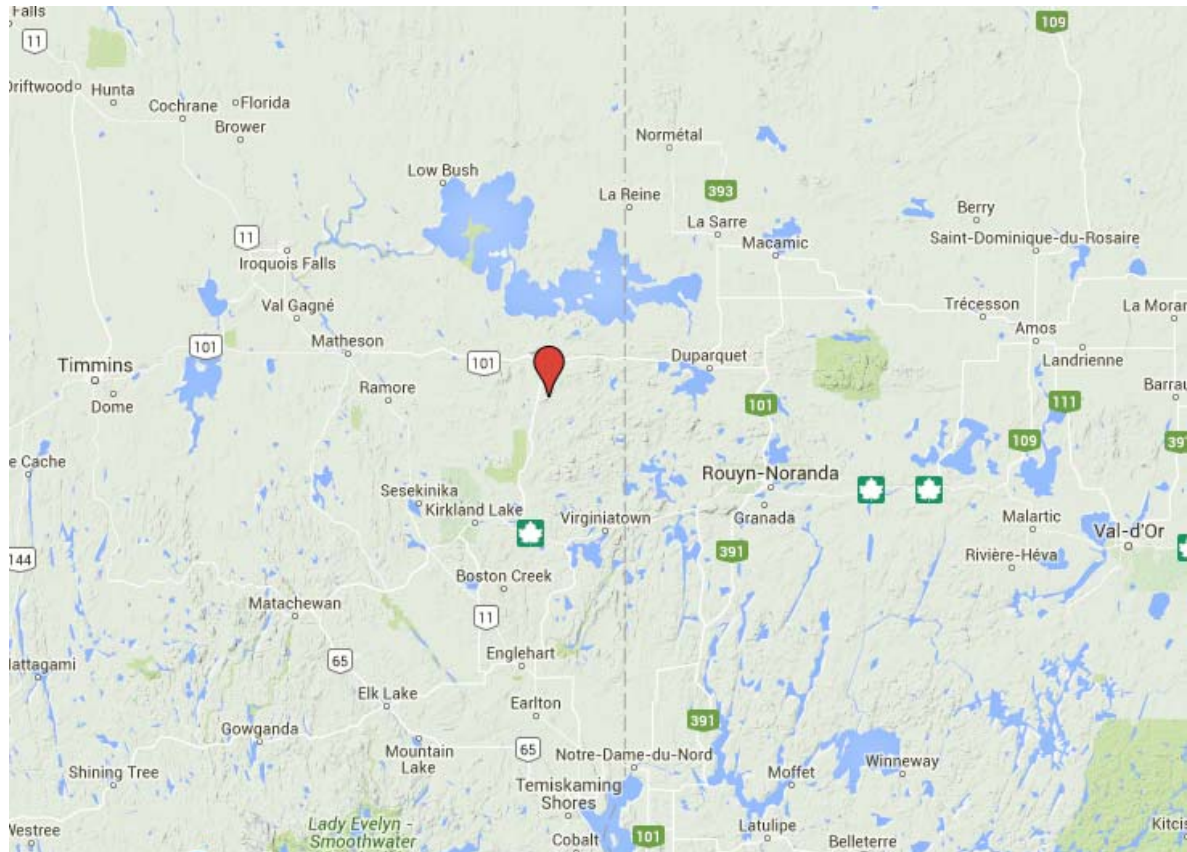
### 1.2 CLIENT

TIGER GOLD EXPLORATION CORPORATION

103 Government Road.  
Kirkland Lake, Ontario  
P2N 1A9

### 1.3 LOCATION

The Harker Heritage Property is located approximately 50 km northeast of Kirkland Lake, Ontario. The property consists of 375 mining claims comprising of over 850 units spanning Clifford, Elliot, Harker, Holloway, Tannahill and Marriott Townships within the Larder Lake Mining Division.



***Figure 1: Location of the Harker Heritage Property***

---

#### **1.4 ACCESS**

Access to the property was attained with a 4x4 truck via highway 672 and highway 101. Numerous forestry access roads and trails were travelled by ATV to access the various parts of the property.

Area 10 is located within Harker Township. Access to this area was via highway 672 approximately 42 kilometers north of the intersection highway 66. At this point the property crosses the highway. From this location an ATV was used to access the traverse area.

#### **1.5 SURVEY AREA**

The survey area was designed to be a reconnaissance survey through the claim group. The traverses were performed with a spectrometer reading taken every 100 meters along the traverse routes.

---

## 2. SURVEY WORK UNDERTAKEN

### 2.1 SURVEY LOG

Date	Description	Total Survey (km)
November 25, 2015	Perform spectrometer survey over area 10.	5.025 km

**Table 1: Survey Log**

### 2.2 PERSONNEL

Jason Ploeger of Larder Lake, Ontario operated the Spectrometer system along with the navigation using a GPS along the traverses.

### 2.3 SURVEY SPECIFICATIONS

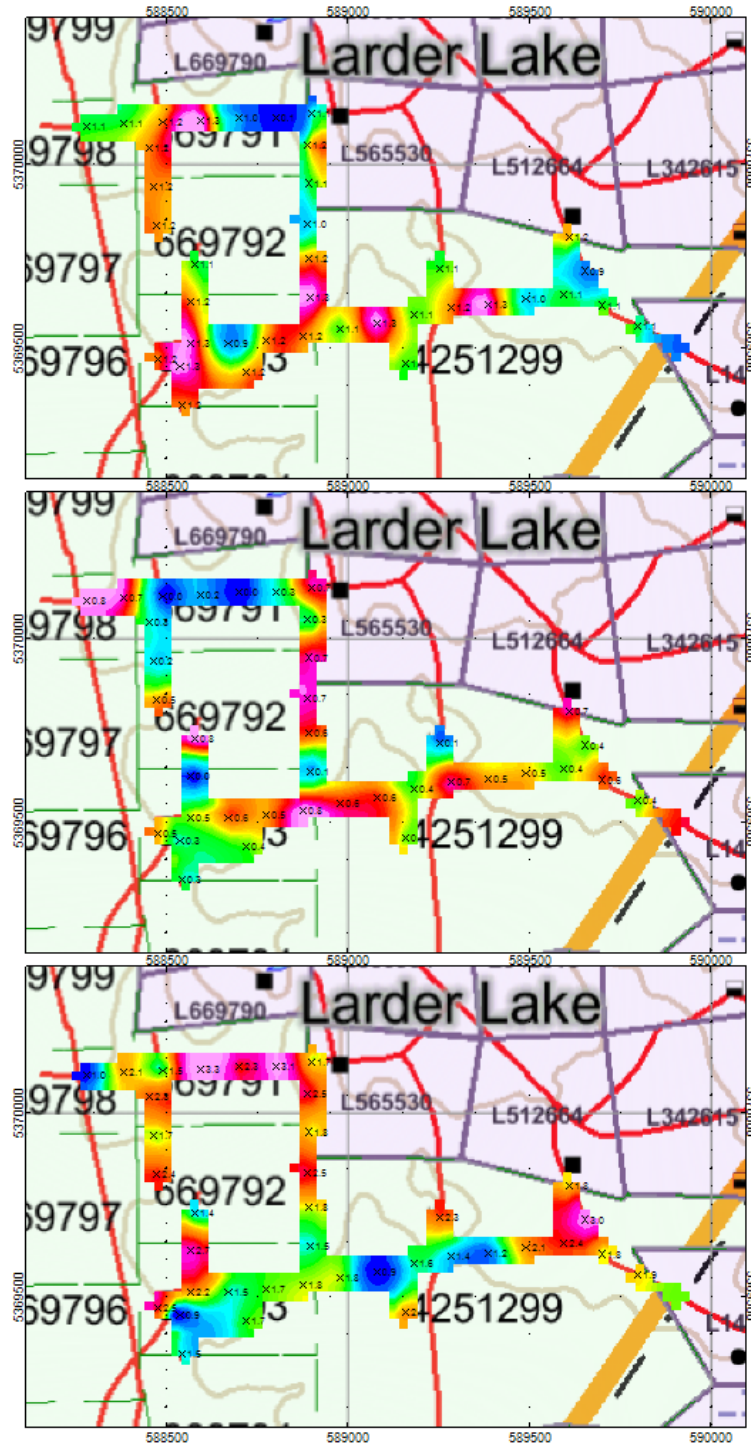
The survey was conducted with a Radiation Solutions RS-230 – BGO SUPER-SPEC spectrometer. The operator traversed the outlined block until the unit detected a cps above background. Once this was detected, the operator backtracked 50m, a GPS waypoint was taken with a corresponding 60 second stacked Spectrometer assay for K%, U ppm and Th ppm. At this point the operator took a sample every 25m until the anomalous region was traversed. Otherwise the operator took an assay and GPS reading every 100m. All data was both electronically noted and written in a notebook.

The background of the instrument was automatically set during the auto-calibration process and it was around 50nGy/h. The device was set to emit an audible alarm if the background was exceeded by two times the level. This was considered by the operator to be anomalous and at this point the operator increased the sample density.

A total of 5.025 kilometers of no grid spectrometer survey was performed on November 25<sup>th</sup>, 2015. This consisted of 38 K, U and Th samples taken.

### 3. OVERVIEW OF SURVEY RESULTS

#### 3.1 SUMMARY



**Figure 2: Spectrometer Readings**

Area 10 represented a region of the Harker Heritage Property which covered 5.025 kilometers of traverses. No outcrop was noticed during the traverse and the area appeared to be mostly covered by esker. No anomalous areas were located during the course of the survey.



---

## APPENDIX A

### STATEMENT OF QUALIFICATIONS

I, C. Jason Ploeger, hereby declare that:

1. I am a professional geophysicist with residence in Larder Lake, Ontario and am presently employed as a Geophysicist and Geophysical Manager of Canadian Exploration Services Ltd. of Larder Lake, Ontario.
2. I am a Practising Member of the Association of Professional Geoscientists, with membership number 2172.
3. I graduated with a Bachelor of Science degree in geophysics from the University of Western Ontario, in London Ontario, in 1999.
4. I have practiced my profession continuously since graduation in Africa, Bulgaria, Canada, Mexico and Mongolia.
5. I am a member of the Ontario Prospectors Association, a Director of the Northern Prospectors Association and a member of the Society of Exploration Geophysicists.
6. I do not have nor expect an interest in the properties and securities of **Tiger Gold Exploration Corporation**.
7. I am responsible for the final processing and validation of the survey results and the compilation of the presentation of this report. The statements made in this report represent my professional opinion based on my consideration of the information available to me at the time of writing this report.



C. Jason Ploeger, P.Ge., B.Sc.  
Geophysical Manager  
Canadian Exploration Services Ltd.

Larder Lake, ON  
December 15, 2015

---

## APPENDIX B

### THEORETICAL BASIS AND SURVEY PROCEDURES

**Gamma-Ray Spectrometry (GRS)** provides a direct measurement of the surface of the earth, with no significant depth of penetration. This at-surface characteristic allows us to reliably relate the measured radioelement contrasts to mapped bedrock and surficial geology, and alteration associated with mineral deposits. All rocks, and materials derived from them are radioactive, containing detectable amounts of a variety of radioactive elements. A gamma-ray spectrometer is designed to detect the gamma rays associated with these radioactive elements and to accurately sort the detected gamma rays by their respective energies. It is this sorting ability that distinguishes the spectrometer from instruments that measure only total radioactivity.

#### Why do we need to know about K, U, and Th?

Potassium (K), uranium (U) and thorium (Th) are the three most abundant, naturally occurring radioactive elements. K is a major constituent of most rocks and is the predominant alteration element in most mineral deposits. Uranium and thorium are present in trace amounts, as mobile and immobile elements, respectively. As the concentration of these different radio elements varies between different rock types, we can use the information provided by a gamma-ray spectrometer to map the rocks. Where the 'normal' radioelement signature of the rocks is disrupted by a mineralizing system, corresponding radioelement anomalies provide direct exploration guidance.

Ground surveys do not require a corresponding airborne survey. They are easily conducted by one person as a reconnaissance survey or more formally using a series of grid lines. The resulting geochemical information provides an important additional layer of information significantly improving bedrock and surficial mapping and ore vectoring.

#### The Gamma-ray Energy Spectrum

The primary acquisition data set is a multichannel gamma-ray energy spectrum. The area from 0 to 0.4 MeV is not used and consists of counts created by Compton scattering. For geological mapping, the  $K^{40}$  (potassium),  $Bi^{214}$  (uranium) &  $Tl^{208}$  (thorium) peaks are of interest. During the aerial survey, the full spectrum of counts is recorded once per second, using a 256-channel histogram. During post-flight data processing, the counts for the radio elements of interest ( $K^{40}$ ,  $Bi^{214}$ ,  $Tl^{208}$ ) are accumulated. The summation includes the counts for a range of energies (a 'window' or 'region of interest') centred on each peak.



Spectrometer Survey  
Harker Heritage Property  
Clifford, Elliot, Harker, Holloway, Tannahill  
and Marriott Townships, Ontario

Tiger Gold  
Exploration  
Corporation

---

The accumulated count rates are then converted to **equivalent** ground concentrations of **potassium, uranium & thorium** using a set of calibration constants that are a characteristic of each spectrometer system.

---

## APPENDIX C

### RS-230 BGO Super Spec Gamma Spectrometer Handheld Gamma-Ray Spectrometer



#### Specifications

##### Memory:

- Internal Data Storage memory
- Assay + 1024 channel Spectra: 128 samples

##### Data Input / Output:

- (Using supplied RS-Analyst software)
- USB
  - Bluetooth
  - GPS link via Bluetooth

##### Temperature Range:

- 20 to +50 degrees Celsius

##### Control:

- Single one button, Thumb activated

##### Alarm:

- Audio via miniature speaker
- Variable audio threshold set point
- Audio proportional to count rate

##### Weight:

- 4.5 lb (2.04 kg) including batteries

### **RS-230 Size & Package Style**

- 10.2" x 3.2" x 3.8" (259 mm x 81. mm x 96 mm)
- 1 mm aluminum outer case
- In a flashlight configuration with side support strap and handle

### **Display:**

- 128 x 64 pixels, 1 1/8 x 2 3/8"
- Graphic LCD display with white backlight and automatic dimming

### **Readout:**

- Search Mode: Counts in CPS from 0 to 65,535 and Histogram chart
- Assay Mode: Display in %K, ppm of U & Th

### **Energy Response:**

30 keV – 3000 keV

### **Internal Sampling:**

20 readings per second

### **Batteries:**

- Internal battery pack module (4xAA) easily replaceable
- Rechargeable or Alkaline (optional)
- Life: 8 + hours at 20 degrees C

The performance of the 6.3 in<sup>3</sup> (103 cm<sup>3</sup>) higher density Bismuth Germanate (BGO) detector is an equivalent of a 21 in<sup>3</sup> (390 cm<sup>3</sup>) Sodium Iodide (NaI) commonly used with larger portable units and approximately more than 3 times the same size NaI crystal.

The spectrometer is auto-stabilizing on the naturally occurring (K, U, & Th) radioactivity and does not require any test sources.

**APPENDIX C**

**GARMIN GPS MAP 62S**



Physical & Performance:	
Unit dimensions, WxHxD:	2.4" x 6.3" x 1.4" (6.1 x 16.0 x 3.6 cm)
Display size, WxH:	1.43" x 2.15" (3.6 x 5.5 cm); 2.6" diag (6.6 cm)
Display resolution, WxH:	160 x 240 pixels
Display type:	transflective, 65-K color TFT
Weight:	9.2 oz (260.1 g) with batteries
Battery:	2 AA batteries (not included); NiMH or Lithium recommended
Battery life:	20 hours
Waterproof:	yes (IPX7)
Floats:	no

High-sensitivity receiver:	yes
Interface:	high-speed USB and NMEA 0183 compatible
<b>Maps &amp; Memory:</b>	
Basemap:	yes
Preloaded maps:	no
Ability to add maps:	yes
Built-in memory:	1.7 GB
Accepts data cards:	microSD™ card (not included)
Waypoints/favorites/locations:	2000
Routes:	200
Track log:	10,000 points, 200 saved tracks
<b>Features &amp; Benefits:</b>	
Automatic routing (turn by turn routing on roads):	yes (with optional mapping for detailed roads)
Electronic compass:	yes (tilt-compensated, 3-axis)
Touchscreen:	no
Barometric altimeter:	yes
Camera:	no
<u>Geocaching-friendly:</u>	yes (paperless)
<u>Custom maps compatible:</u>	yes
Photo navigation (navigate to geotagged photos):	yes
Outdoor GPS games:	no

Hunt/fish calendar:	yes
Sun and moon information:	yes
Tide tables:	yes
Area calculation:	yes
Custom POIs (ability to add additional points of interest):	yes
Unit-to-unit transfer (shares data wirelessly with similar units):	yes
Picture viewer:	yes
Garmin Connect™ compatible (online community where you analyze, categorize and share data):	yes

- *Specifications obtained from [www.garmin.com](http://www.garmin.com)*



---

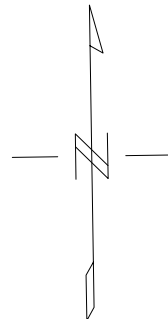
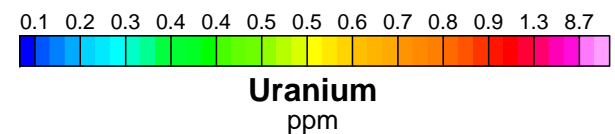
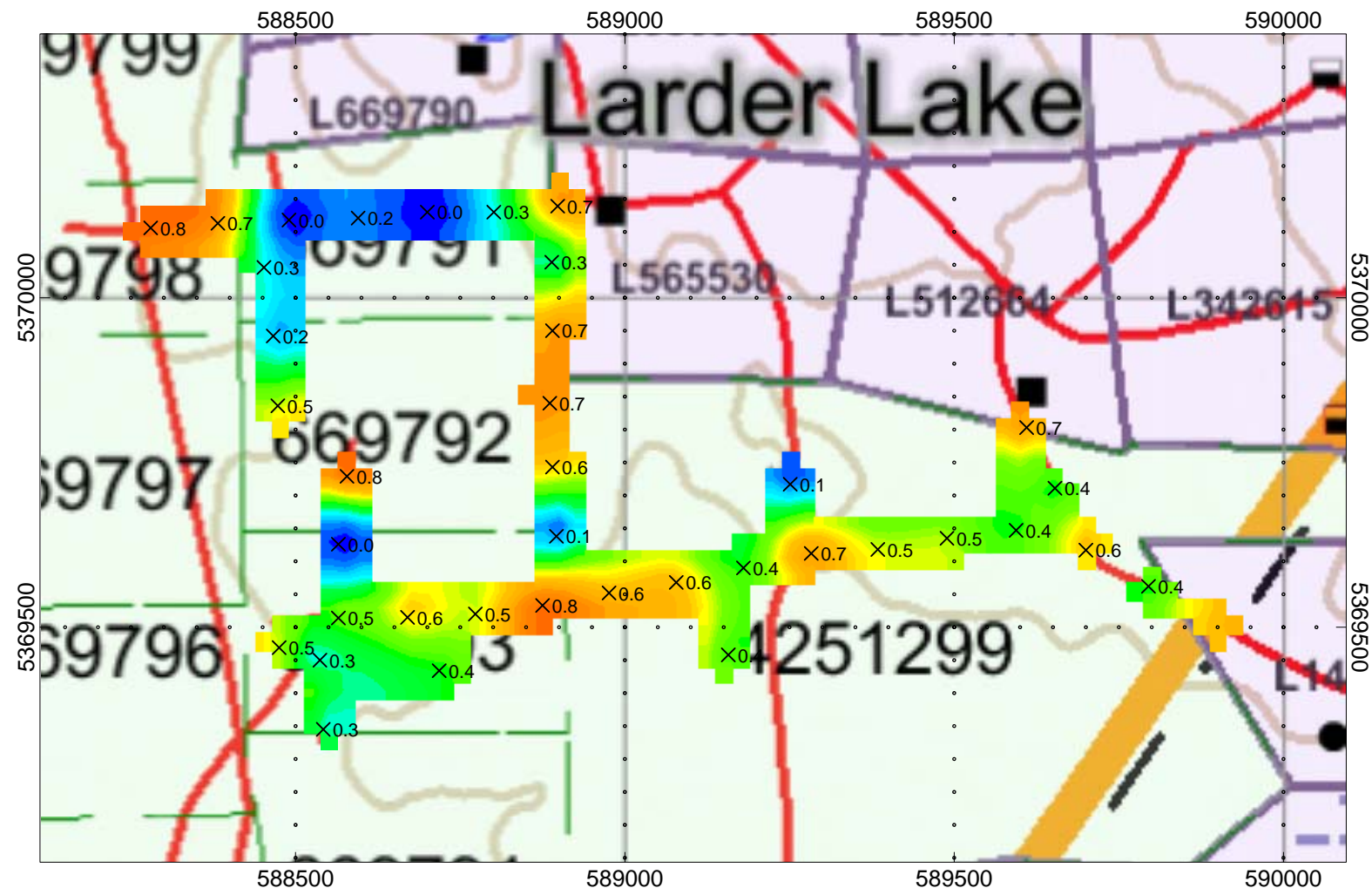
## APPENDIX D

### LIST OF MAPS (IN MAP POCKET)

Posted spectrometer plan maps (1:10000)

- 1) TIGER-HARKER HERITAGE-AREA 10-SPECT-U
- 2) TIGER-HARKER HERITAGE-AREA 10-SPECT-Th
- 3) TIGER-HARKER HERITAGE-AREA 10-SPECT-K

**TOTAL MAPS = 3**



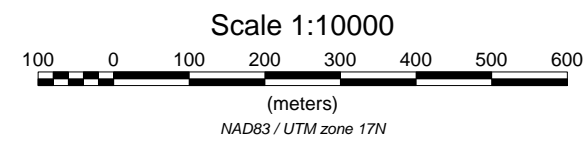
**TIGER GOLD  
EXPLORATION CORPORATION**

**HARKER HERITAGE PROPERTY  
Area 10  
Harker Township, Ontario**

URANIUM CONTOURED PLAN MAP  
Readings Taken On Ground

Posting Level: 0 ppm  
Station Separation: varies during GPS traverse  
Th Contours: 0 ppm

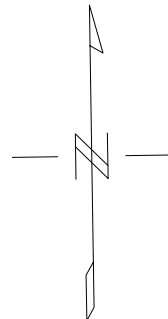
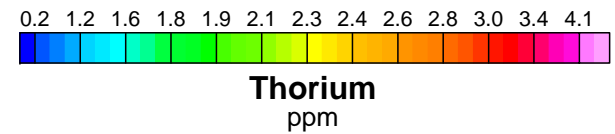
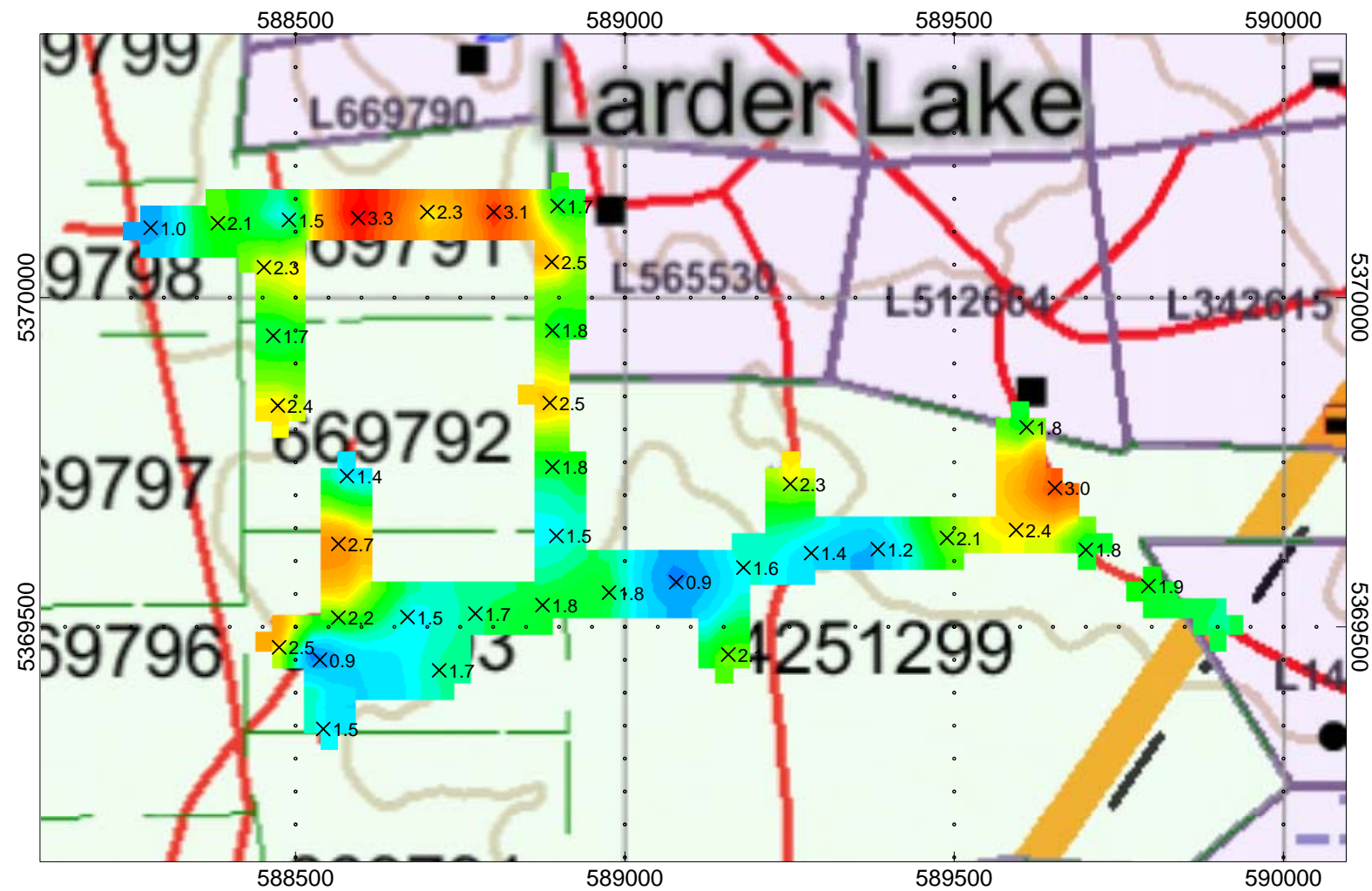
RS-230 BGO SUPER SPECTROMETER



Operated By: C Jason Ploeger, B.Sc.  
Processed by: C Jason Ploeger, B.Sc.  
Map Drawn By: C Jason Ploeger, B.Sc.  
December 2015



*Drawing: TIGER-HARKER HERITAGE-AREA 10-SPECT-U*



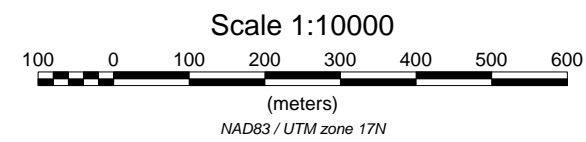
**TIGER GOLD  
EXPLORATION CORPORATION**

**HARKER HERITAGE PROPERTY  
Area 10  
Harker Township, Ontario**

THORIUM CONTOURED PLAN MAP  
Readings Taken On Ground

Posting Level: 0 ppm  
Station Separation: varies during GPS traverse  
Th Contours: 0 ppm

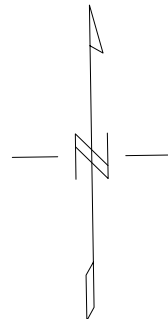
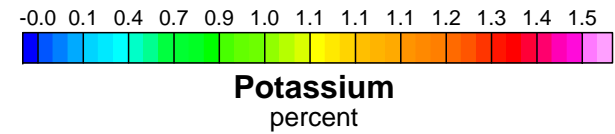
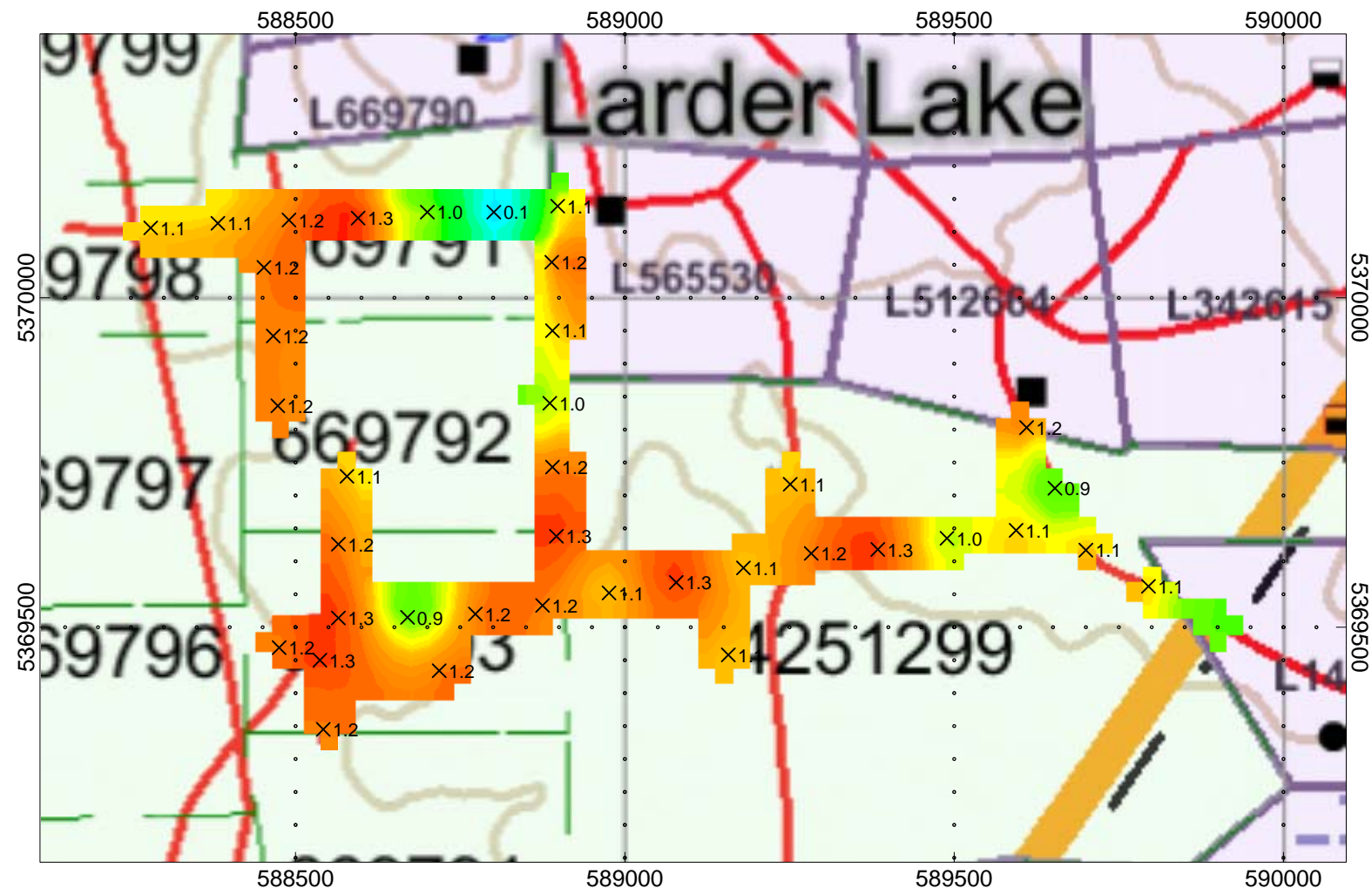
RS-230 BGO SUPER SPECTROMETER



Operated By: C Jason Ploeger, B.Sc.  
Processed by: C Jason Ploeger, B.Sc.  
Map Drawn By: C Jason Ploeger, B.Sc.  
December 2015



*Drawing: TIGER-HARKER HERITAGE-AREA 10-SPECT-Th*



**TIGER GOLD  
EXPLORATION CORPORATION**

**HARKER HERITAGE PROPERTY  
Area 10  
Harker Township, Ontario**

POTASSIUM CONTOURED PLAN MAP  
Readings Taken On Ground

Posting Level: 0 %  
Station Separation: varies during GPS traverse  
K Contours: 0 %

RS-230 BGO SUPER SPECTROMETER

Operated By: C Jason Ploeger, B.Sc.  
Processed by: C Jason Ploeger, B.Sc.  
Map Drawn By: C Jason Ploeger, B.Sc.  
December 2015



*Drawing: TIGER-HARKER HERITAGE-AREA 10-SPECT-K*

