

We are committed to providing [accessible customer service](#).  
If you need accessible formats or communications supports, please [contact us](#).

Nous tenons à améliorer [l'accessibilité des services à la clientèle](#).  
Si vous avez besoin de formats accessibles ou d'aide à la communication, veuillez [nous contacter](#).



**CANADIAN EXPLORATION SERVICES LTD**

PO Box 219, 14579 Government Road, Larder Lake, Ontario, P0K 1L0, Canada  
Phone (705) 643-2345 Fax (705) 643-2191 www.cxsltd.com

---

# **TIGER GOLD EXPLORATION CORPORATION**

## **Prospecting Over the HARKER HERITAGE PROPERTY AREA 8**

### **Harker and Holloway Town- ships, Ontario**

## TABLE OF CONTENTS

<b>1.</b>	<b>SURVEY DETAILS .....</b>	<b>3</b>
1.1	PROJECT NAME .....	3
1.2	CLIENT .....	3
1.3	LOCATION .....	3
1.4	ACCESS .....	4
1.5	SURVEY AREA .....	4
1.6	REGIONAL GEOLOGY .....	4
1.7	PREVIOUS WORK .....	4
<b>2.</b>	<b>SURVEY WORK UNDERTAKEN .....</b>	<b>5</b>
2.1	SURVEY LOG .....	5
2.2	PERSONNEL .....	5
2.3	SURVEY SPECIFICATIONS .....	5
<b>3.</b>	<b>OVERVIEW OF SURVEY RESULTS .....</b>	<b>6</b>
3.1	DAY-1 – NOVEMBER 19, 2015 .....	6

## LIST OF APPENDICES

**APPENDIX A: STATEMENT OF QUALIFICATIONS**  
**APPENDIX B: INSTRUMENT SPECIFICATIONS**  
**APPENDIX C: LIST OF MAPS (IN MAP POCKET)**

## LIST OF TABLES AND FIGURES

Figure 1: Location of the Harker Heritage Property.....	3
Figure 2: Sample 06067.....	6
Figure 3: Sample 06068.....	7
Figure 4: Sample 06069.....	8
Figure 5: Sample 06070.....	9
Figure 6: Sample 06071.....	10
Figure 7: Sample 06073.....	11
Figure 8: Sample 06074.....	12
Figure 9: Sample 06075.....	13
Figure 10: Sample 06076.....	14
Figure 11: Sample 06077.....	15
Figure 12: Sample 06078.....	16
Figure 13: Sample 06079.....	17
Figure 14: Sample 06080.....	18



---

Figure 15: Sample 06081.....	19
Figure 16: Sample 06082.....	20
Figure 17: Sample 06083.....	21
Figure 18: Sample 06084.....	22
Figure 19: Sample 06085.....	23
Table 1: Survey Log.....	5

## 1. SURVEY DETAILS

### 1.1 PROJECT NAME

This project is known as the **Harker Heritage Property – Area 8**.

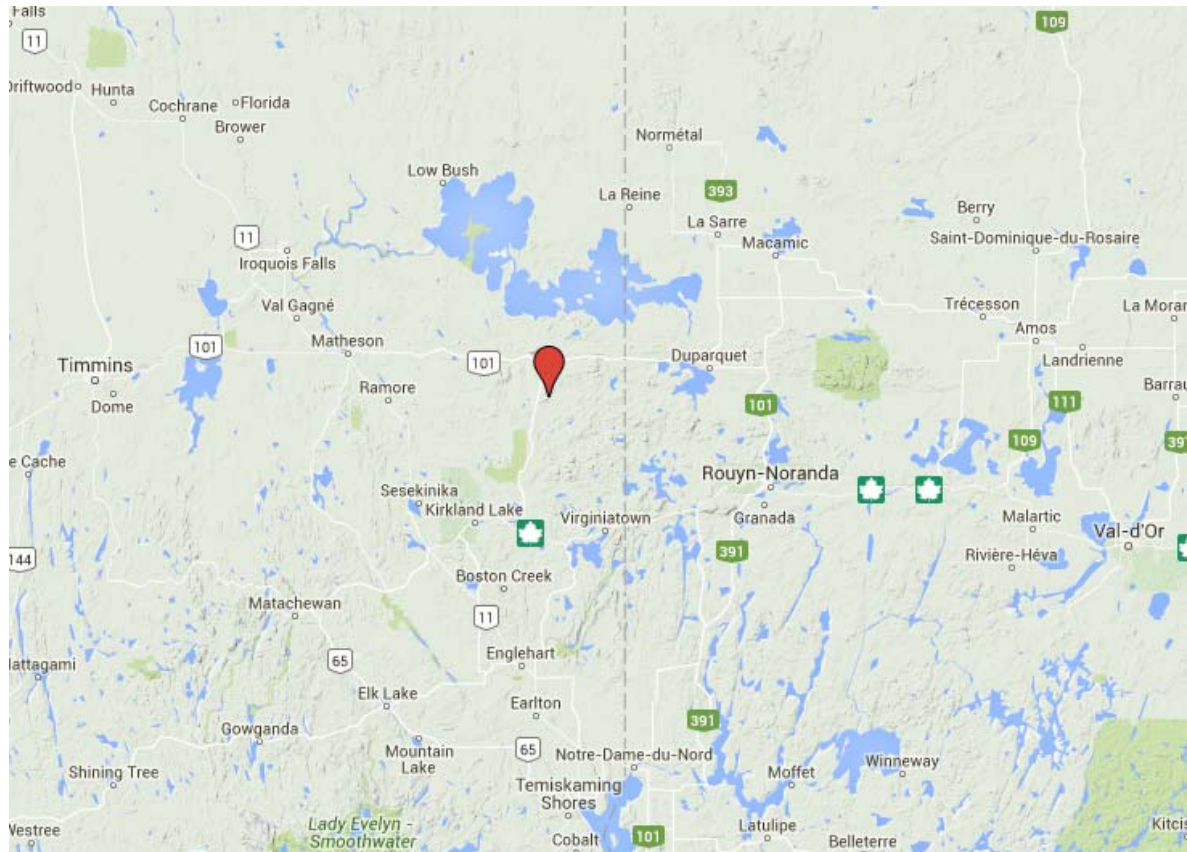
### 1.2 CLIENT

TIGER GOLD EXPLORATION CORPORATION,

103 Government Road.  
Kirkland Lake, Ontario  
P2N 1A9

### 1.3 LOCATION

The Harker Heritage Property is located approximately 50 km northeast of Kirkland Lake, Ontario. The property consists of 375 mining claims comprising of over 850 units spanning Clifford, Elliot, Harker, Holloway, Tannahill and Marriott Townships within the Larder Lake Mining Division.



***Figure 1: Location of the Harker Heritage Property***

---

## **1.4 ACCESS**

Access to the property was attained with a 4x4 truck via highway 672 and highway 101. Numerous forestry access roads and trails were travelled by ATV to access the various parts of the property.

Area 8 is located within Harker and Holloway Townships. Access to this area was via highway 672. Approximately 40 kilometers north of the intersection highway 66 the property crosses the highway. At this location the truck was parked and an ATV was used for the remainder of the access.

## **1.5 SURVEY AREA**

The traversed lines were established using a GPS in conjunction with the execution of the survey. The survey area was for reconnaissance and therefore randomly generated in the field based on topography and vegetation.

## **1.6 REGIONAL GEOLOGY**

The property is hosted in the Archean aged Blake River Group of the Abitibi sub-province. Volcanic rocks of the area are classified chemically as tholeiitic and calc-alkaline. They include a wide spectrum of rock types ranging from basalts to rhyolites. Intrusive rocks include gabbros, diorites and feldspar porphyries with scattered rare diabase dykes. Mapping in the region has identified a number of east west trending fold axis that lead to the repetition of units in a north south direction.

## **1.7 PREVIOUS WORK**

The first recorded work by the present claim holders was in 1982 and consisted of magnetometer and VLF surveys. From 1982 to present, the current claim holders have cut numerous grids on which have been performed magnetometer, VLF, HLEM, geochem and geological mapping. The present claim holders also had an airborne magnetometer and VLF survey performed and drilled 19 diamond drill holes totaling 12142 feet.

Additional claim holders prior to the present claim holders also performed airborne magnetometer and VLF surveys over portions of the property. Between 1985-1987 Newmont Exploration of Canada Limited held a portion of the claims covered by the traverses. Over these they mapped the geology and drilled 56 reverse circulation drill holes.

Additional undocumented work has been performed over the traverse area. Areas of stripping and channel sampling along with an adit was located during the traverses.

---

## 2. SURVEY WORK UNDERTAKEN

### 2.1 SURVEY LOG

Date	Description	Total Traverse (km)
November 19, 2015		9.4

**Table 1: Survey Log**

### 2.2 PERSONNEL

Bill Bonney of Kirkland Lake, Ontario performed the prospecting traverse and collected GPS waypoint data.

### 2.3 SURVEY SPECIFICATIONS

The main purpose of the prospecting was to investigate to areas of outcrop exposure for potential mineralization. Rock samples were collected from outcrops crossed during the traverses. These samples were taken for reference purposes.

---

### 3. OVERVIEW OF SURVEY RESULTS

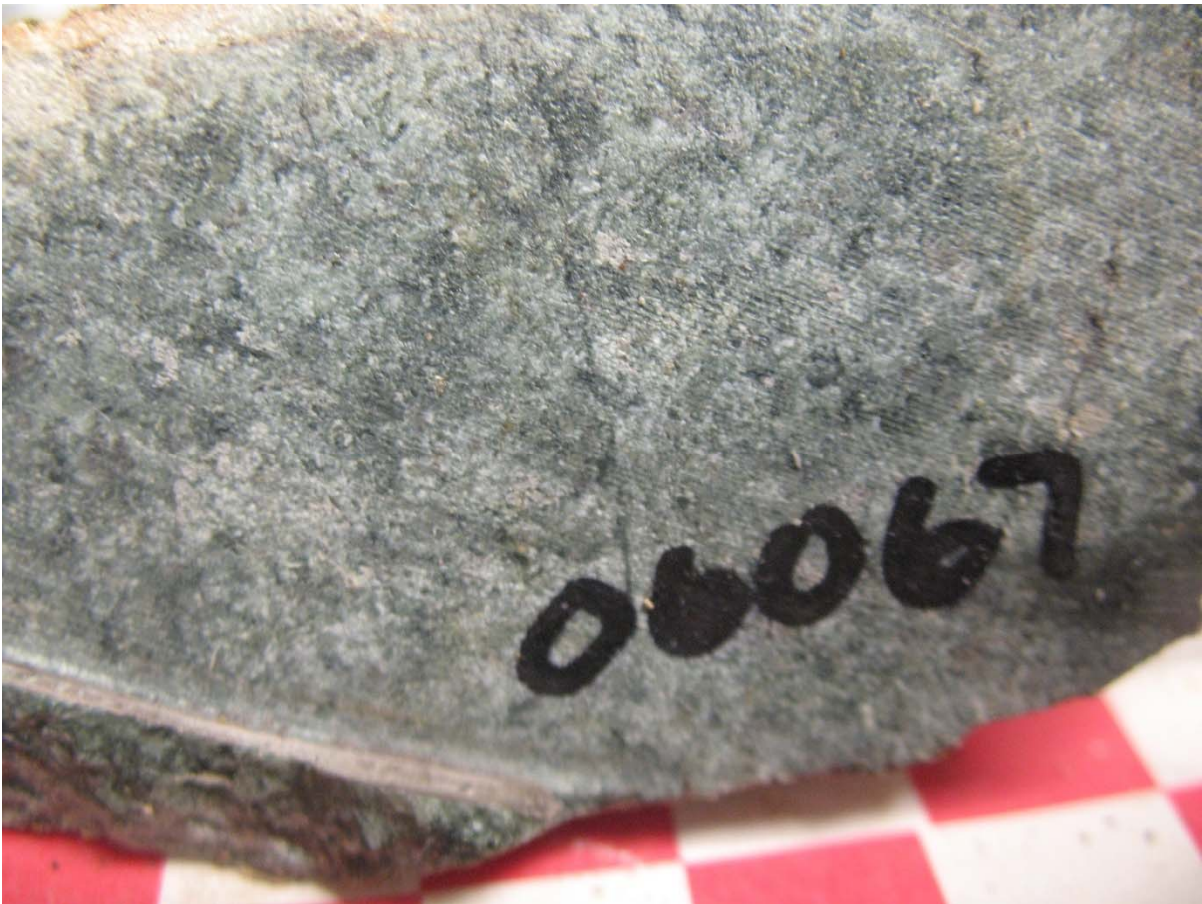
**ALL SAMPLES WERE TAKEN FOR REFERENCE PURPOSES ONLY! ALL SAMPLES WERE PRESENTED TO TIGER GOLD EXPLORATION CORPORATION.**

#### 3.1 DAY-1 – NOVEMBER 19, 2015

##### Sample 06067

**NAD 83 - Zone 17N  
588945E 5367277N**

The outcrop this sample was collected from was in an area with mixed vegetation.



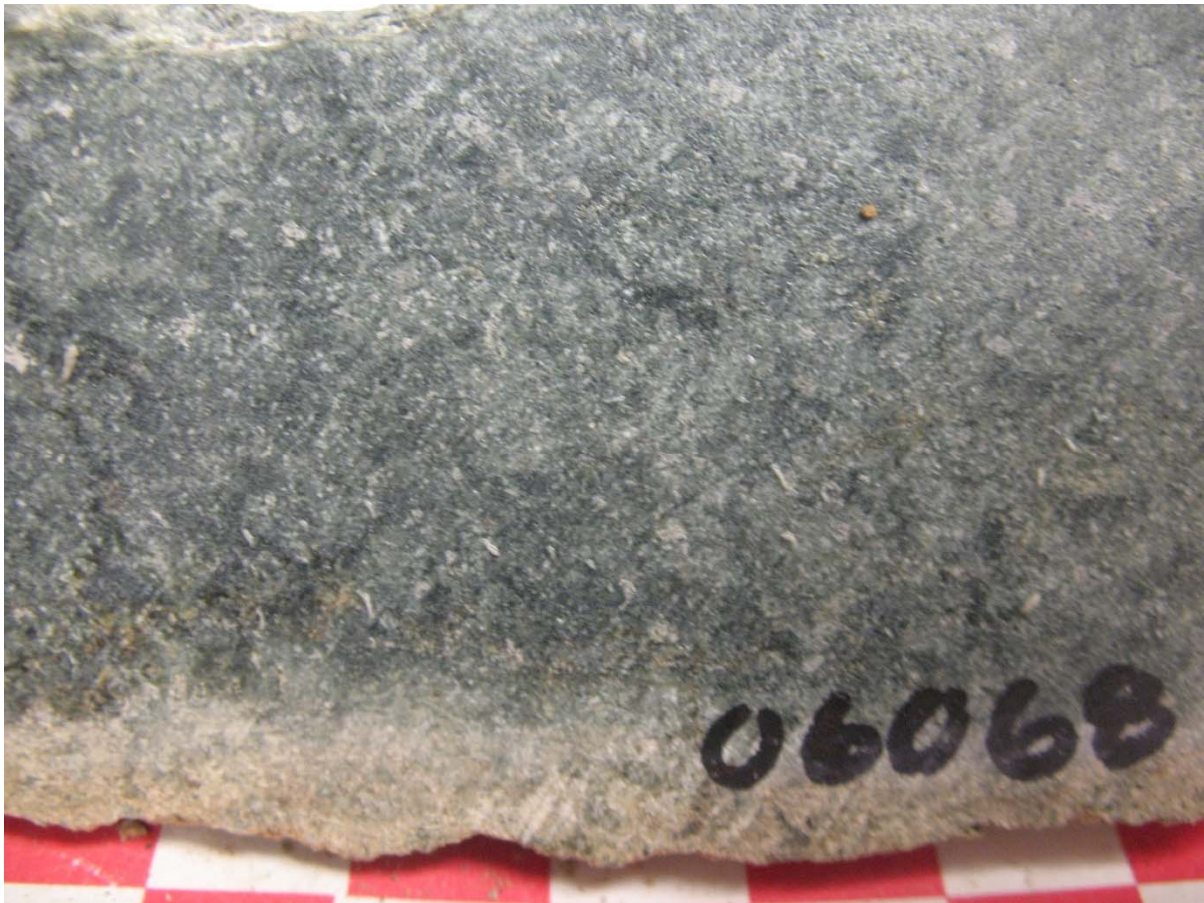
**Figure 2: Sample 06067**



**Sample 06068**

**NAD 83 - Zone 17N  
589347E 5367510N**

The outcrop this sample was collected from was in an area covered with spruce.

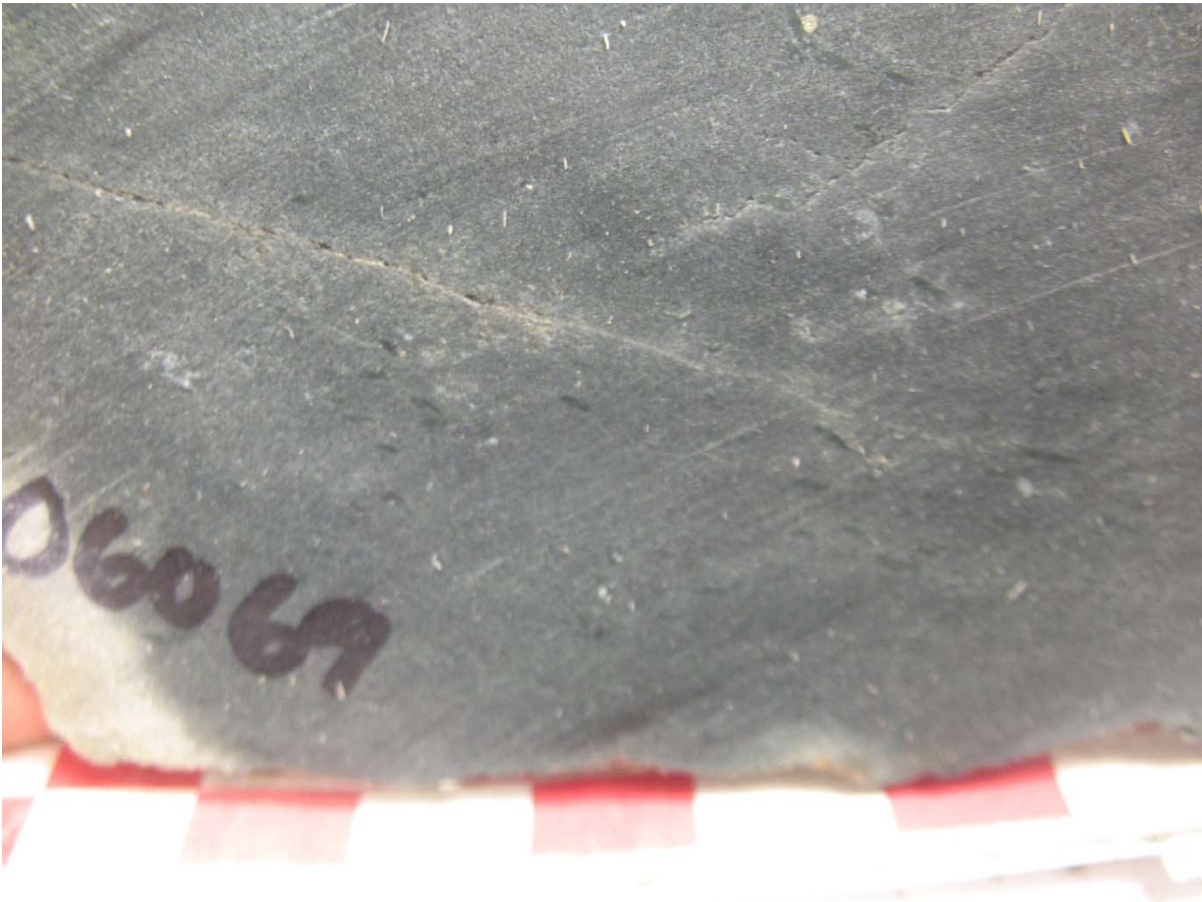


**Figure 3: Sample 06068**

**Sample 06069**

**NAD 83 - Zone 17N  
589464E 5367509N**

The outcrop this sample was collected from was in an area covered with spruce and birch.

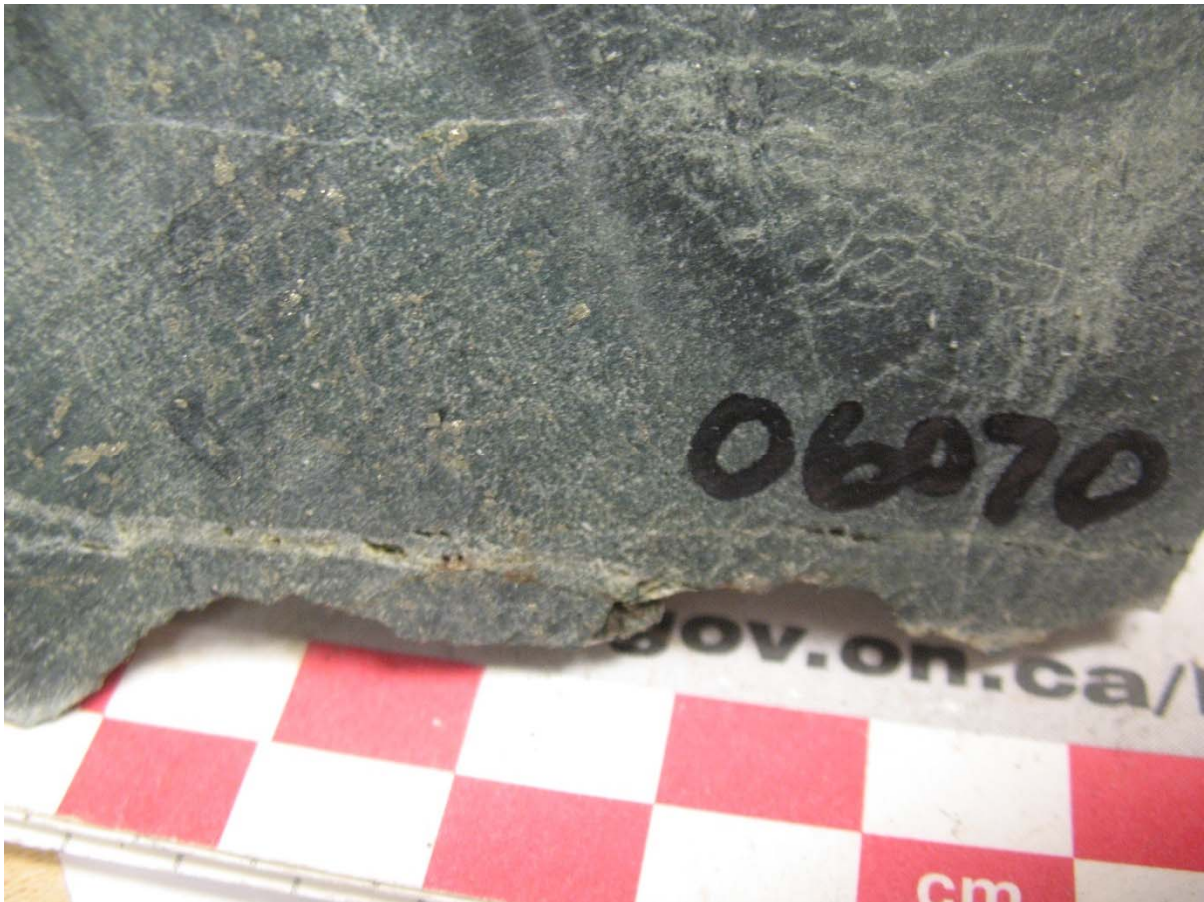


**Figure 4: Sample 06069**

**Sample 06070**

**NAD 83 - Zone 17N  
589658E 5367397N**

The outcrop this sample was collected from was in an area with mixed vegetation.



**Figure 5: Sample 06070**

**Sample 06071**

**NAD 83 - Zone 17N  
589721E 5367326N**

The outcrop this sample was collected from was in an area with mixed vegetation.



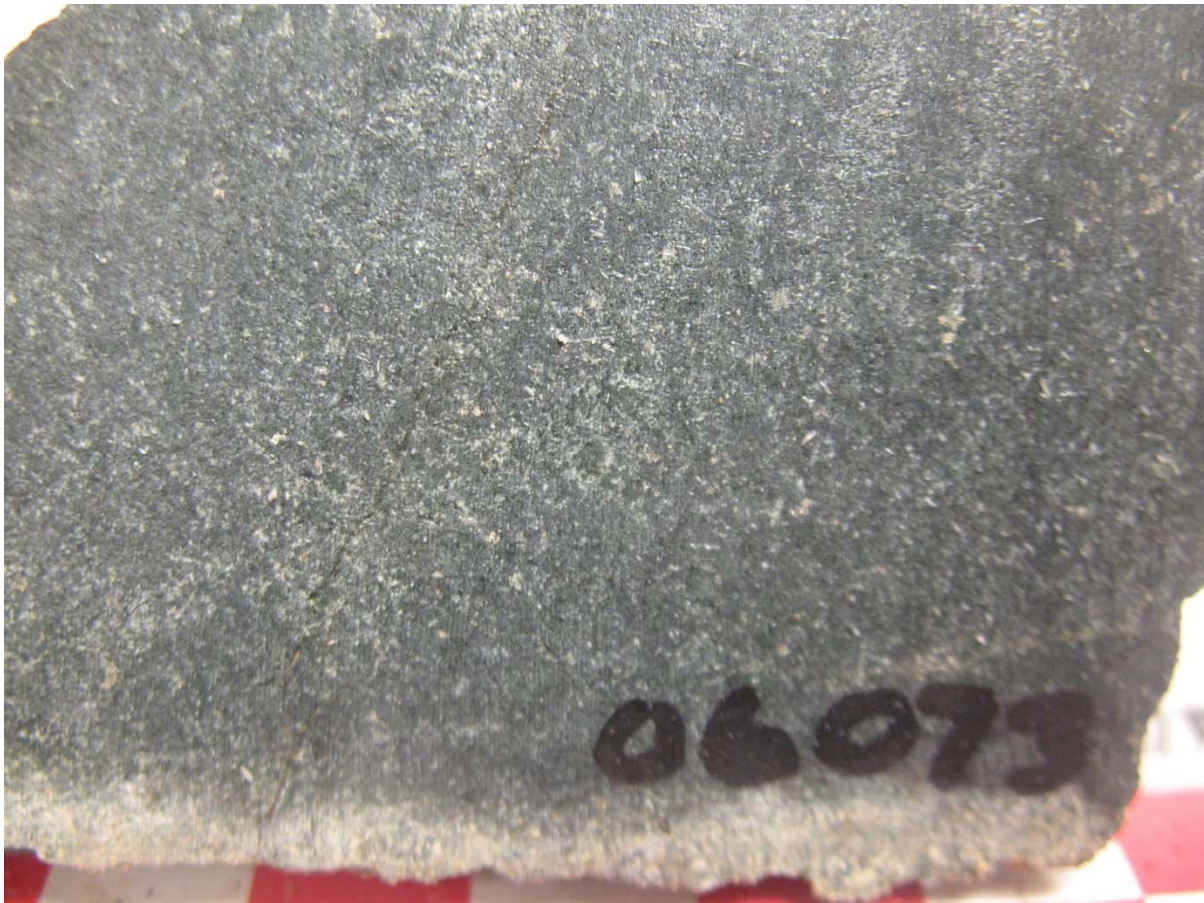
**Figure 6: Sample 06071**

This outcrop is continuous for 62 meters to UTM coordinates 589761E and 5367279N.

**Sample 06073**

**NAD 83 - Zone 17N  
589866E 5367280N**

The vegetation is mixed at this location.



**Figure 7: Sample 06073**

This outcrop is continuous for 77 meters to UTM coordinates 589791E and 5367265N.

---

**Sample 06074**

**NAD 83 - Zone 17N  
590010E 5367254N**

The vegetation is mixed at this location.



**Figure 8: Sample 06074**

**Sample 06075**

**NAD 83 - Zone 17N  
590090E 5367246N**

The vegetation is mixed at this location.



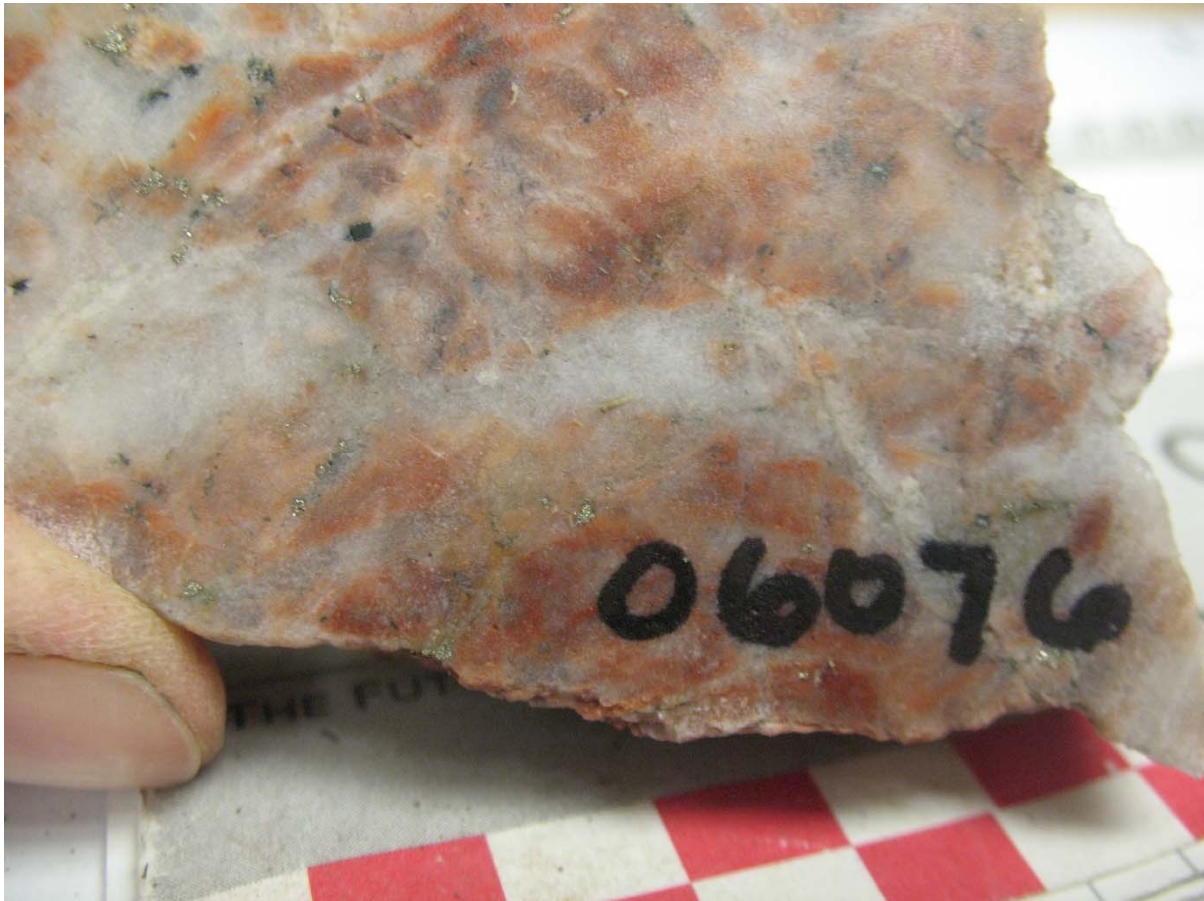
**Figure 9: Sample 06075**

---

**Sample 06076**

**NAD 83 - Zone 17N  
590184E 5367274N**

This sample was taken from a muckpile. This sample most likely represents the ore mined at the Iris Mine.



**Figure 10: Sample 06076**



---

**Sample 06077****NAD 83 - Zone 17N  
590348E 5367613N**

The vegetation at this location consists of a spruce/birch mix. A large stripped area is located east of this point. The stripping area appears to have been washed and is approximately 200m x 100m in size. Located at 590469E and 5367643N is the entrance of an adit which most likely represents the Iris Mine.



**Figure 11: Sample 06077**

---

**Sample 06078**

**NAD 83 - Zone 17N  
590607E 5367769N**

This outcrop occurs on the edge of a beaver pond.



**Figure 12: Sample 06078**

---

**Sample 06079**

**NAD 83 - Zone 17N  
590960E 5367862N**

The vegetation is mixed at this location.



**Figure 13: Sample 06079**

This outcrop is repeated at coordinates 590986E and 5367882N.

**Sample 06080**

**NAD 83 - Zone 17N  
591729E 5367894N**

The vegetation is mixed at this location.



**Figure 14: Sample 06080**

---

**Sample 06081**

**NAD 83 - Zone 17N  
591513E 5368237N**

This outcrop was repeated at many locations. It represents a volcanic flow with visible pillow selveges.



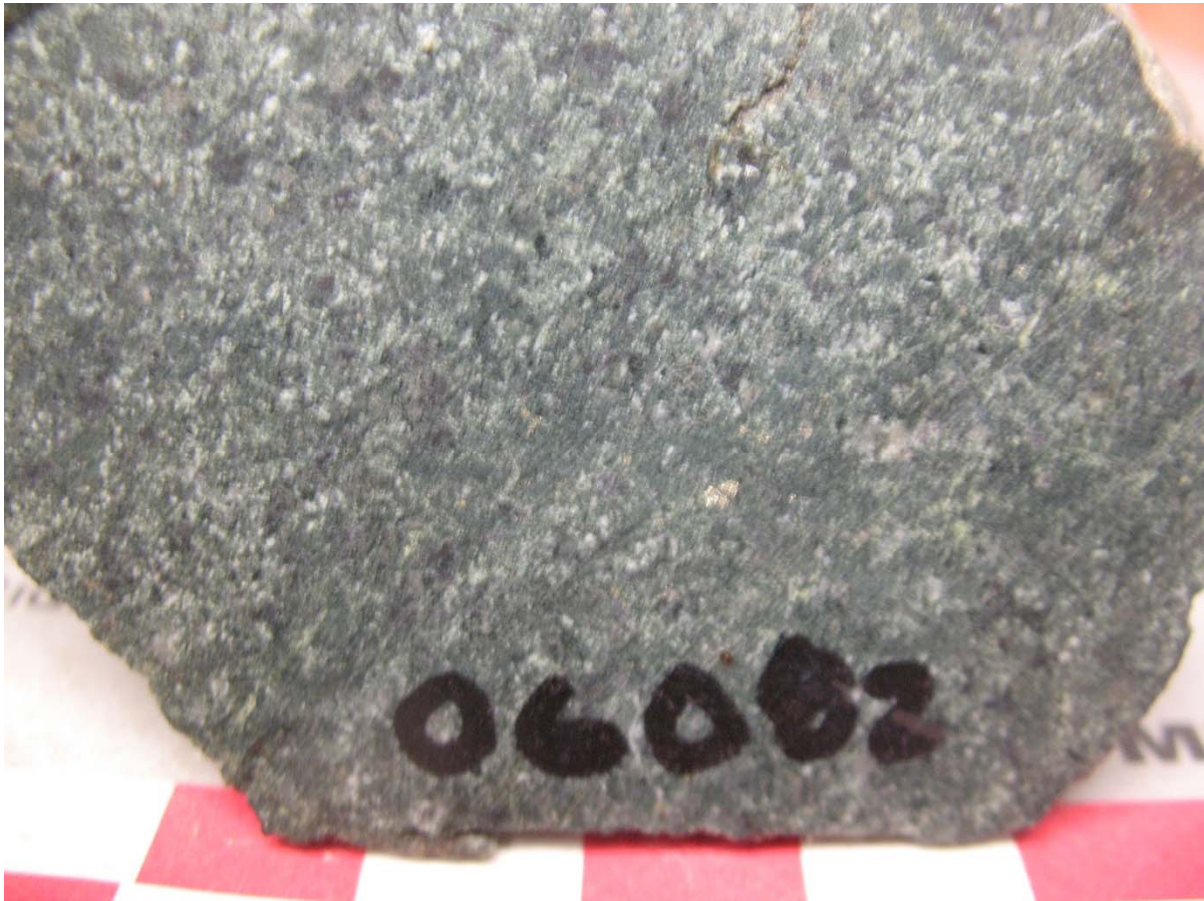
**Figure 15: Sample 06081**

This outcrop is repeated at coordinates 591320E 5368116N, 591355E 5368137N and 591520E 5368244N.

**Sample 06082**

**NAD 83 - Zone 17N  
591949E 5368059N**

This sample was collected in a clearcut.



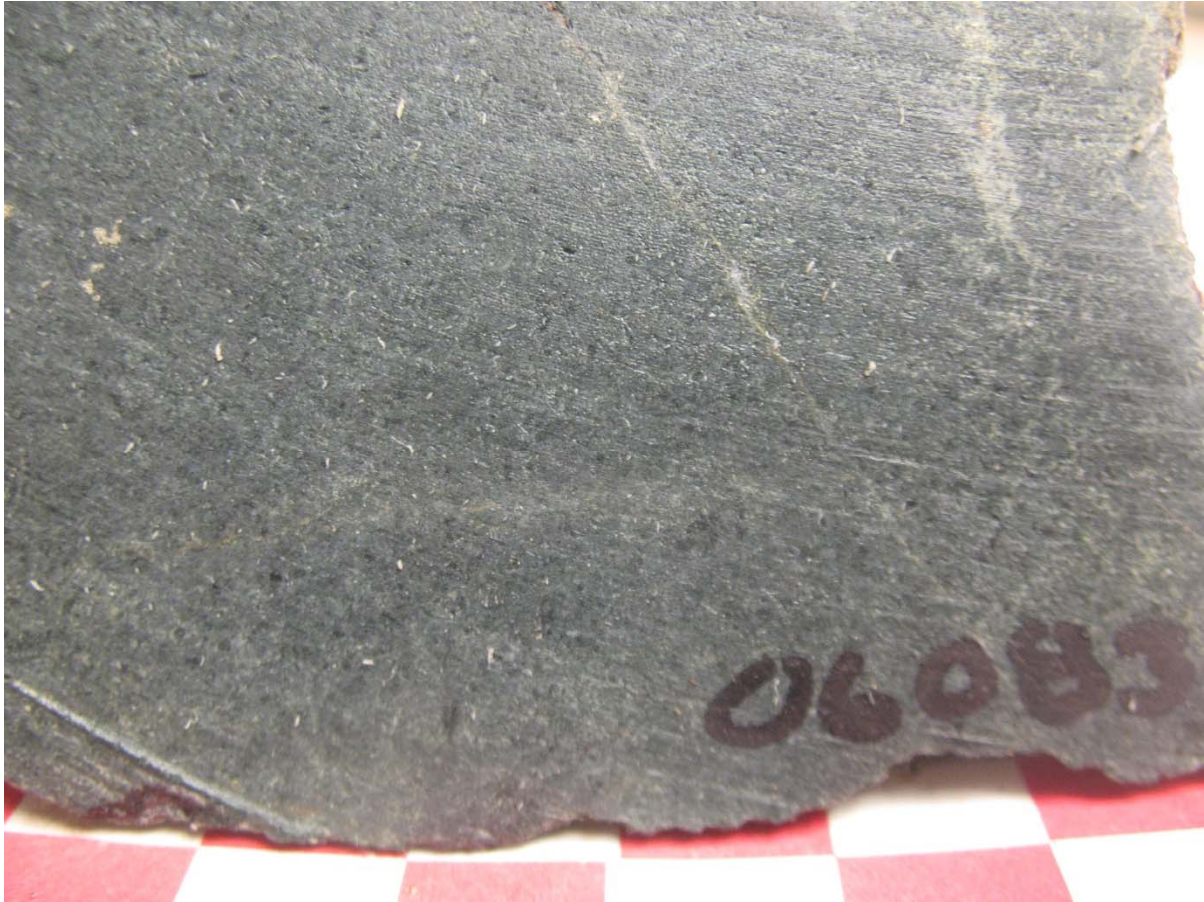
**Figure 16: Sample 06082**

---

**Sample 06083**

**NAD 83 - Zone 17N  
591390E 5368759N**

The vegetation at this location is composed of spruce.



**Figure 17: Sample 06083**

---

**Sample 06084**

**NAD 83 - Zone 17N  
590521E 5367615N**

The vegetation at this location is a mixture of spruce and birch.



**Figure 18: Sample 06084**

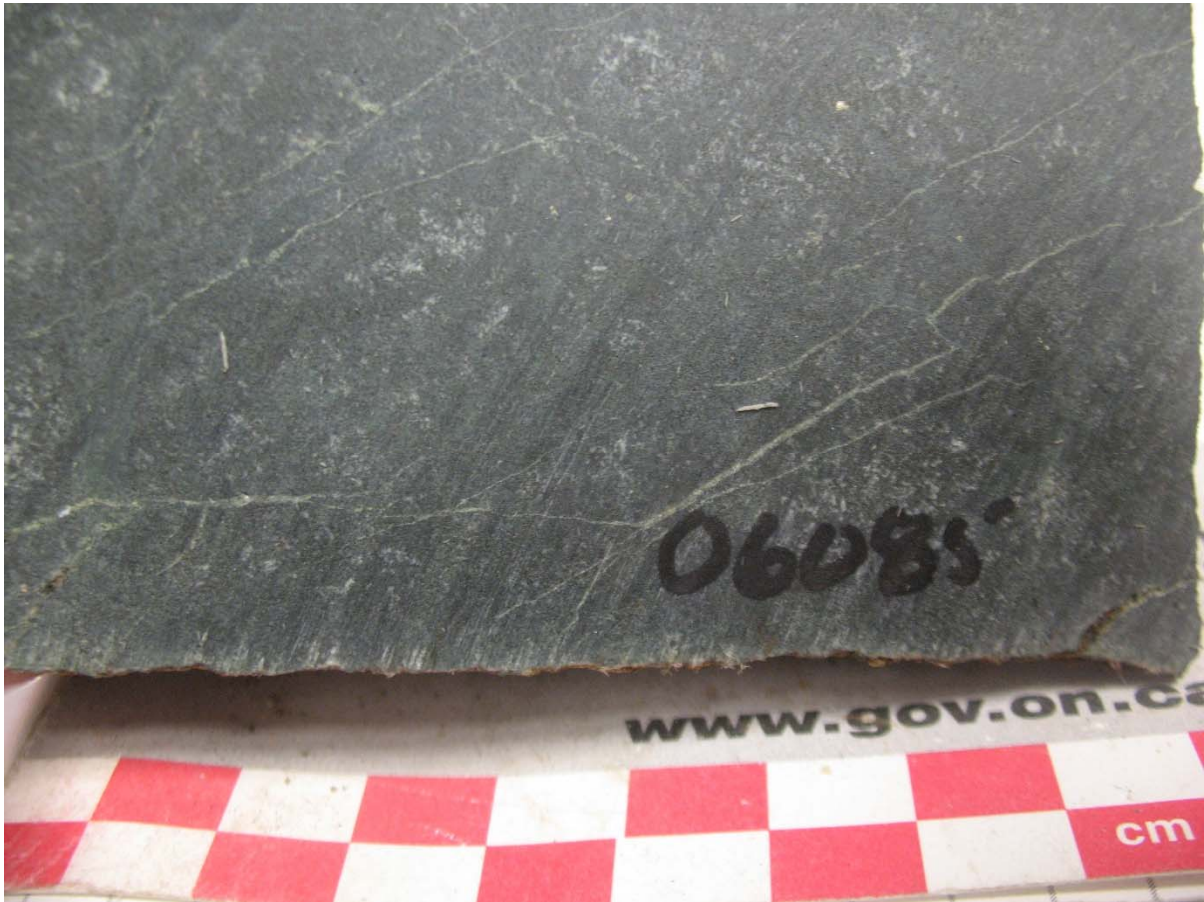


---

**Sample 06085**

**NAD 83 - Zone 17N  
590509E 5367535N**

The vegetation at this location is a mixture of spruce and birch.



**Figure 19: Sample 06085**

---

## APPENDIX A

### STATEMENT OF QUALIFICATIONS

I, C. Jason Ploeger, hereby declare that:

1. I am a professional geophysicist with residence in Larder Lake, Ontario and am presently employed as a Geophysicist and Geophysical Manager of Canadian Exploration Services Ltd. of Larder Lake, Ontario.
2. I am a Practising Member of the Association of Professional Geoscientists, with membership number 2172.
3. I graduated with a Bachelor of Science degree in geophysics from the University of Western Ontario, in London Ontario, in 1999.
4. I have practiced my profession continuously since graduation in Africa, Bulgaria, Canada, Mexico and Mongolia.
5. I am a member of the Ontario Prospectors Association, a Director of the Northern Prospectors Association and a member of the Society of Exploration Geophysicists.
6. I do not have nor expect an interest in the properties and securities of **Tiger Gold Exploration Corporation.**
7. I am responsible for the final processing and validation of the survey results and the compilation of the presentation of this report. The statements made in this report represent my professional opinion based on my consideration of the information available to me at the time of writing this report.



C. Jason Ploeger, P.Geo., B.Sc.  
Geophysical Manager  
Canadian Exploration Services Ltd.

Larder Lake, ON  
February 17, 2016

**APPENDIX B**

**GARMIN GPS MAP 62S**



Physical & Performance:	
Unit dimensions, WxHxD:	2.4" x 6.3" x 1.4" (6.1 x 16.0 x 3.6 cm)
Display size, WxH:	1.43" x 2.15" (3.6 x 5.5 cm); 2.6" diag (6.6 cm)
Display resolution, WxH:	160 x 240 pixels
Display type:	transflective, 65-K color TFT
Weight:	9.2 oz (260.1 g) with batteries
Battery:	2 AA batteries (not included); NiMH or Lithium recommended
Battery life:	20 hours
Waterproof:	yes (IPX7)
Floats:	no

High-sensitivity receiver:	yes
Interface:	high-speed USB and NMEA 0183 compatible
<b>Maps &amp; Memory:</b>	
Basemap:	yes
Preloaded maps:	no
Ability to add maps:	yes
Built-in memory:	1.7 GB
Accepts data cards:	microSD™ card (not included)
Waypoints/favorites/locations:	2000
Routes:	200
Track log:	10,000 points, 200 saved tracks
<b>Features &amp; Benefits:</b>	
Automatic routing (turn by turn routing on roads):	yes (with optional mapping for detailed roads)
Electronic compass:	yes (tilt-compensated, 3-axis)
Touchscreen:	no
Barometric altimeter:	yes
Camera:	no
<u>Geocaching-friendly:</u>	yes (paperless)
<u>Custom maps compatible:</u>	yes
Photo navigation (navigate to geotagged photos):	yes
Outdoor GPS games:	no

Hunt/fish calendar:	yes
Sun and moon information:	yes
Tide tables:	yes
Area calculation:	yes
Custom POIs (ability to add additional points of interest):	yes
Unit-to-unit transfer (shares data wirelessly with similar units):	yes
Picture viewer:	yes
Garmin Connect™ compatible (online community where you analyze, categorize and share data):	yes

- *Specifications obtained from [www.garmin.com](http://www.garmin.com)*



Prospecting  
Harker Heritage Property  
Area 8  
Harker and Holloway Townships Ontario

Tiger Gold  
Exploration  
Corporation

---

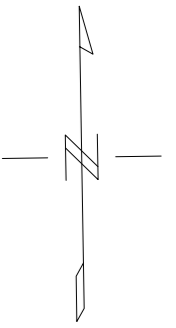
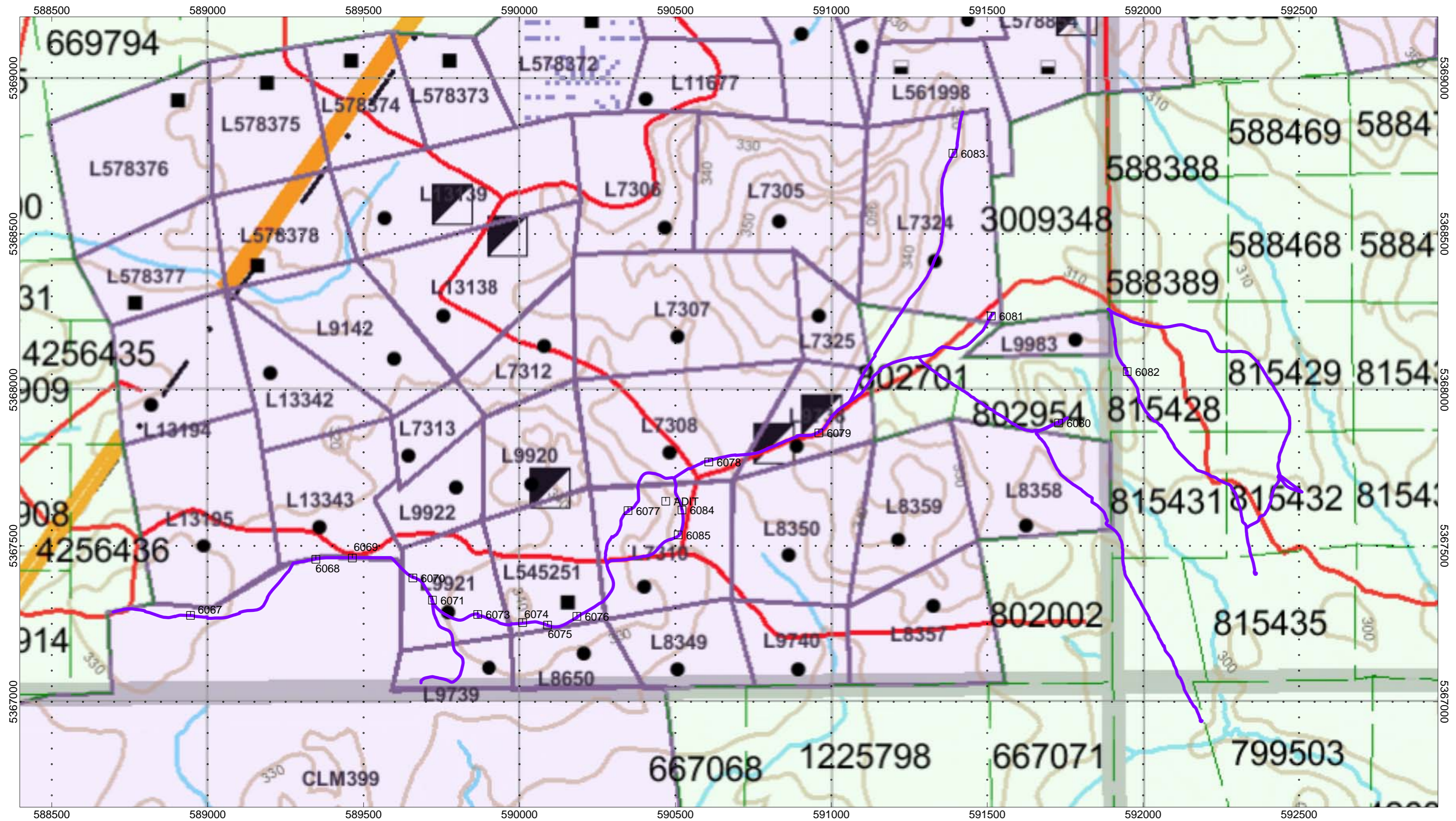
## APPENDIX C

### LIST OF MAPS (IN MAP POCKET)

Posted Traverse plan maps (1:10000)

1) TIGER-HARKER HERITAGE-AREA 8-PROSPECTING

**TOTAL MAPS = 1**

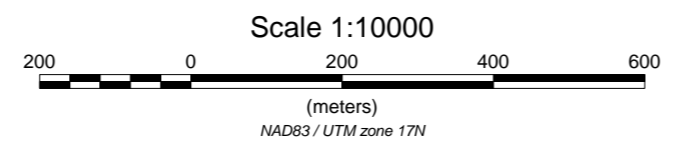


November 19, 2015

**TIGER GOLD  
EXPLORATION CORPORATION**

**HARKER HERITAGE PROPERTY  
Area 8  
Harker and Holloway Townships, Ontario**

PROSPECTING TRAVERSE PLAN MAP  
November 19, 2015



Operated By: Bill Bonney  
Processed by: C Jason Ploeger, B.Sc.  
Map Drawn By: C Jason Ploeger, B.Sc.  
February 2016



Drawing: TIGER-HARKER HERITAGE-AREA 8-PROSPECTING