

We are committed to providing [accessible customer service](#).
If you need accessible formats or communications supports, please [contact us](#).

Nous tenons à améliorer [l'accessibilité des services à la clientèle](#).
Si vous avez besoin de formats accessibles ou d'aide à la communication, veuillez [nous contacter](#).

PROSPECTING REPORT

WEST PORCUPINE PROPERTY
Claim 4262400
Sewell Township, Northeastern Ontario

For
White Metal Resources Corp
3250 Highway 130
Rosslyn, ON
P7K 0B1

Prepared By:
Michael Stares
November 17, 2015

Table of Contents

	Page
1.0 Introduction.....	1
2.0 Location.....	1
3.0 Access.....	1
4.0 Prospecting.....	1

Figures

Figure 1 – General Location Map	2
Figure 2 – Claims Map	3

Maps

Map 1	Prospecting Map Claim 4262400	Scale 1:2,500
-------	-------------------------------	---------------

Appendices

Appendix 1	Prospecting Log
Appendix 2	Sample Description Sheet
Appendix 3	Assay Certificate – Accurassay

1.0 Introduction

At the request of White Metal Resources prospecting work was carried out on claim 4262400 of the West Porcupine Property on November 2, 2015 by John Hussey of Timmins Ontario.

2.0 Location

The West Porcupine property is located about 62 km south west of the city of Timmins Ontario (Figure 1). The property lies within the Timmins Mining Division on NTS map sheets 42B01 and 42A04. The approximate centre of claim 4262400 is UTM 429850mE, 5338780mN, Zone 17, NAD83 and longitude/latitude 81°56'W and 48°12'N.

3.0 Access

Access to the claim can be gained by following Highway 101 southwest from Timmins to a gravel road that starts at UTM 430131mE, 5343305mN and ends at UTM 421844mE, 5341778mN a distance of approximately 3.2 km following a southerly direction, then proceed south for approximately 1.45 km to the #1 post of claim 4262400 located at UTM 430131mE, 5338974mN.

4.0 Claim Description

Claim 4262400 is located in Sewell Township on claim map G-3247 and consists of 2 units totaling approximately 22.2 hectares (Figure 2)

5.0 Prospecting

Prospecting was carried out on claim 4262400 for one day November 2, 2015. Location control was maintained by following the existing blazed claim lines and carrying out north-south traverses using a compass and handheld GPS unit. All locations are noted as being in Universal Transverse Mercator projection using North American Datum 83 in Zone 17 coordinates.

Work was carried out to locate any historic workings and assess the potential of surrounding rock to host significant gold mineralization. A daily log is presented in Appendix 1. During the traverses overburden cover, topography and vegetation were noted. Samples are described (Appendix 2) and three samples were taken for lab analysis (Appendix 3). Results of prospecting are plotted on Map 1 at a scale of 1:2500.

Prospecting in the field and supervision was carried by the following personnel:

Mr Michael Stares
3250 Highway 130
Rosslyn, ON P7K 0B1



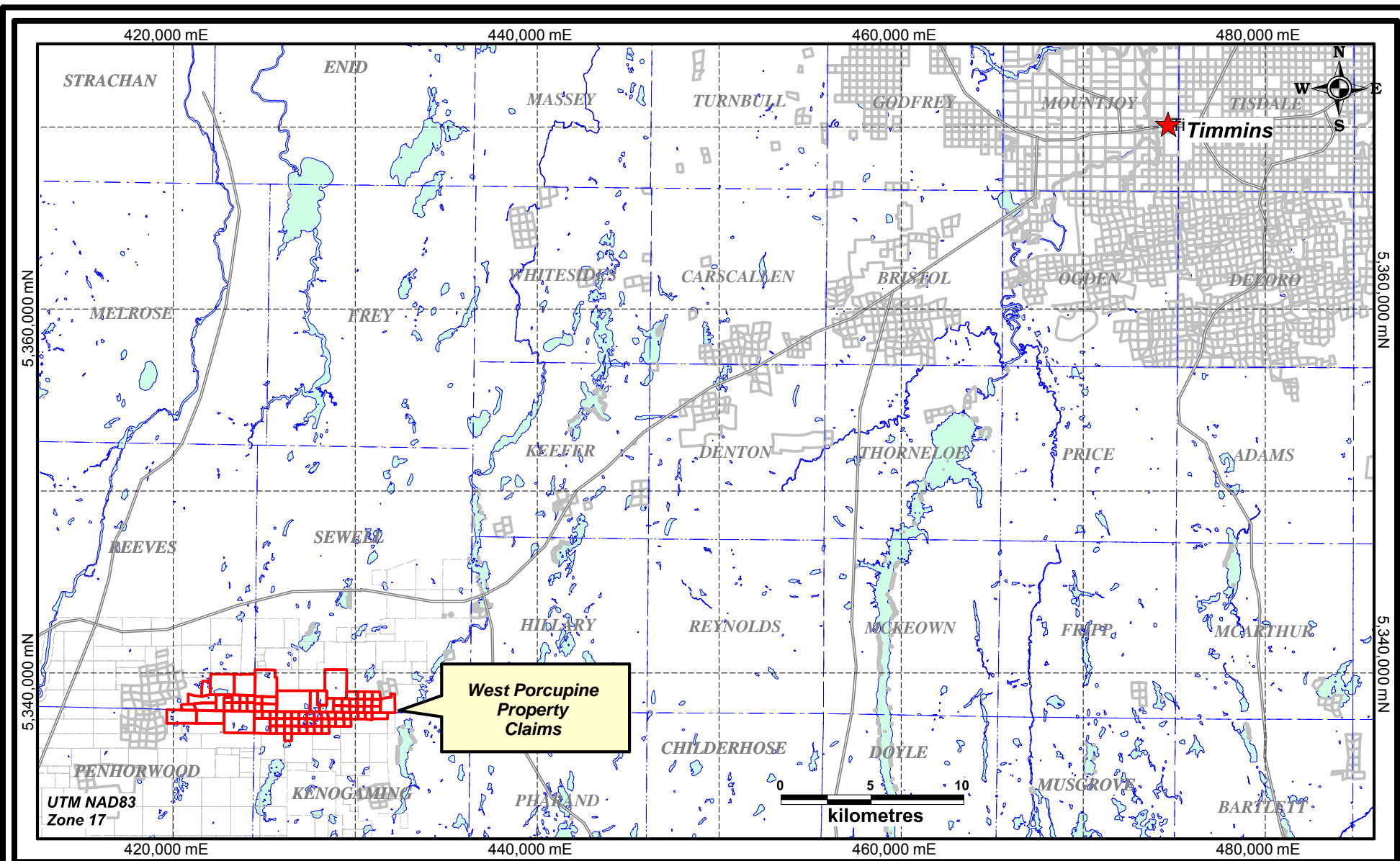
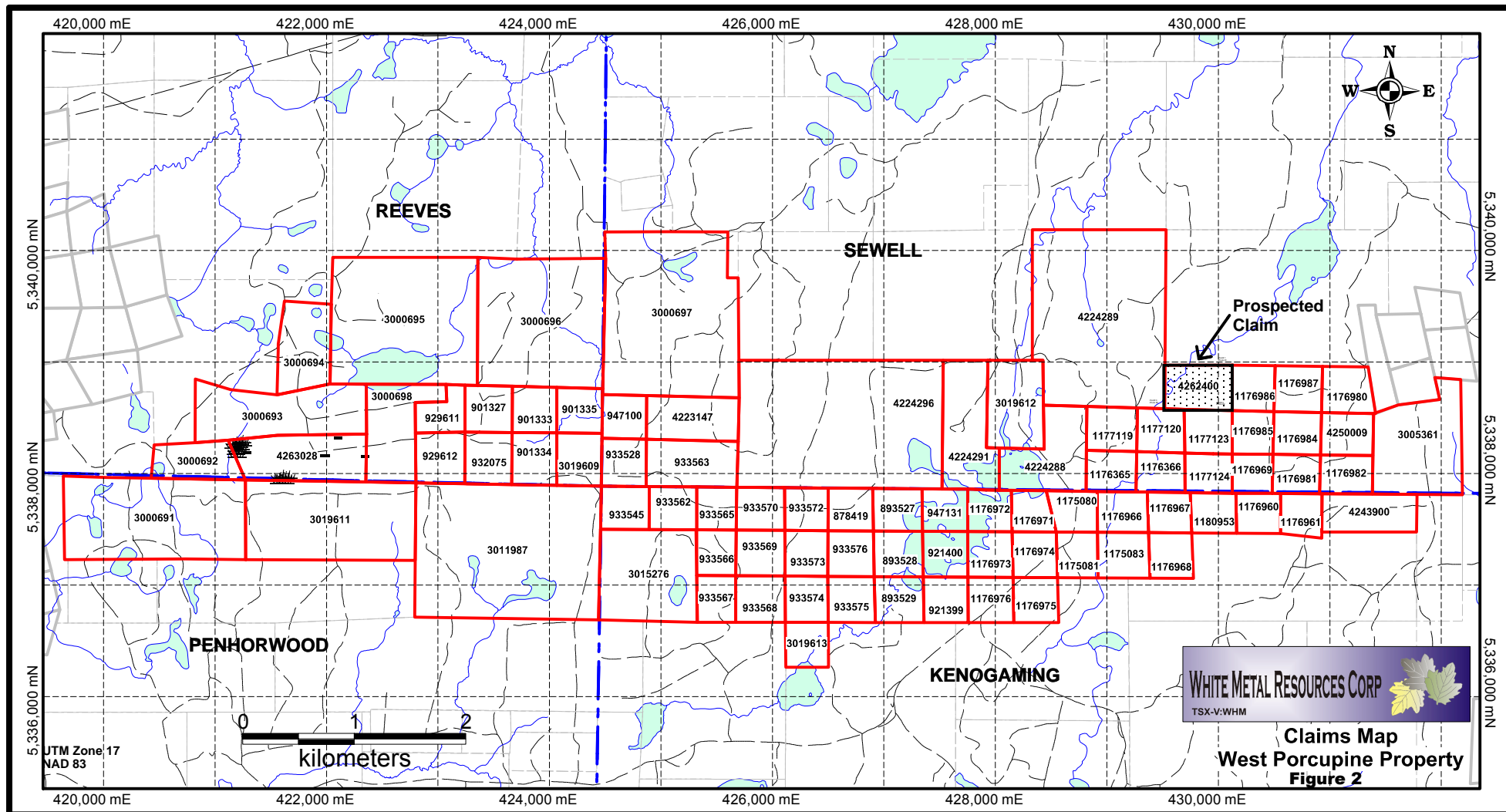
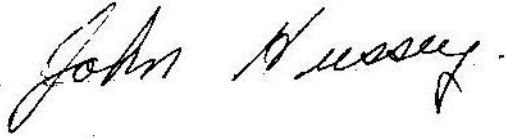


Fig. 1
Location Map
West Porcupine Property



Mr. John Hussey
700 Maclean Drive
Timmins, ON P4N 8A1

A handwritten signature in black ink that reads "John Hussey". The signature is written in a cursive style with a period at the end.

Respectfully Submitted,

A handwritten signature in black ink that reads "Michael Stares". The signature is written in a cursive style.

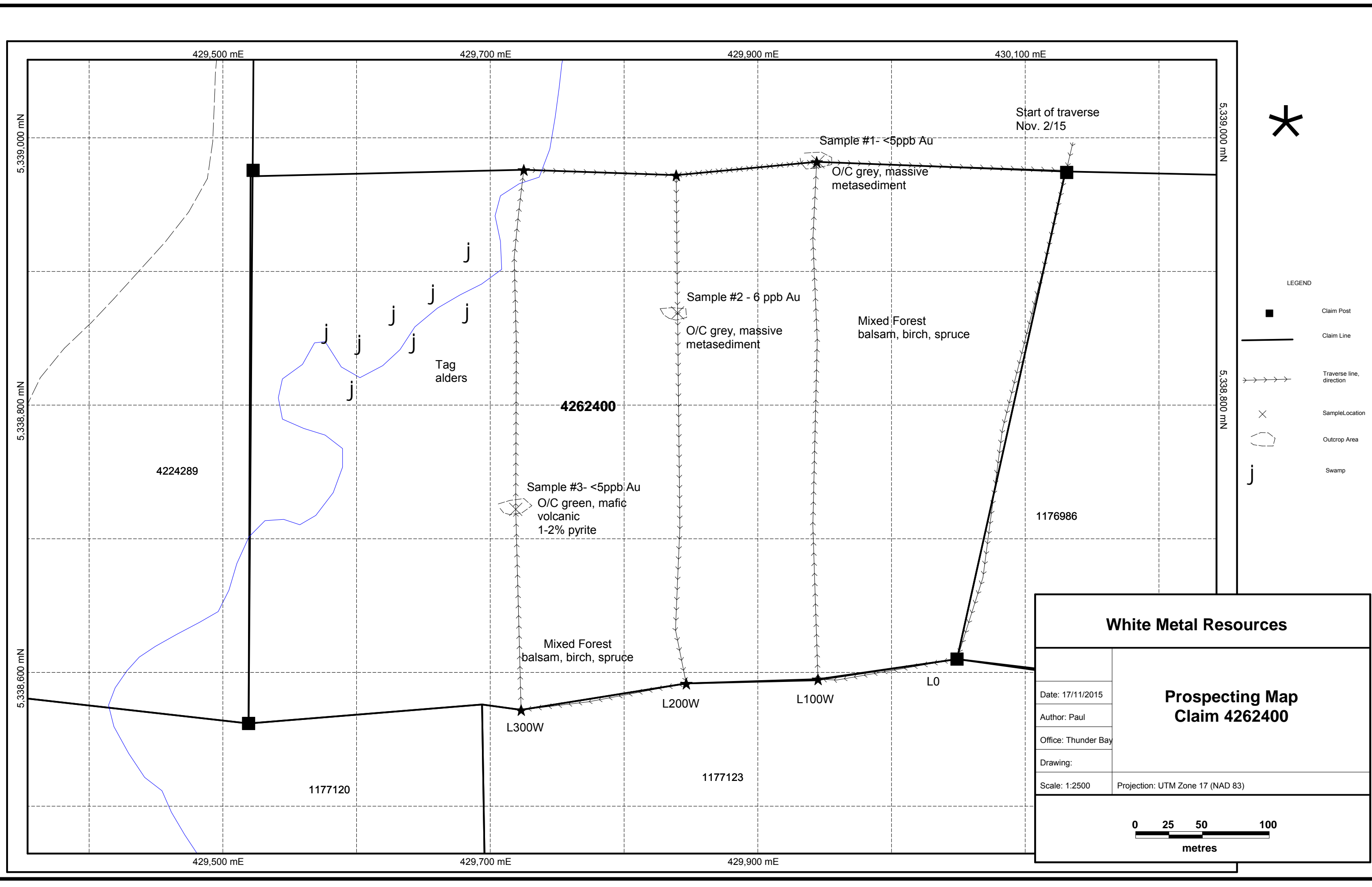
Michael Stares

November 17, 2015

Map 1

Sample Location and Traverse Map-

Scale 1:2,5000



LEGEND

- Claim Post
- Claim Line
- Traverse line, direction
- × Sample Location
- ⬡ Outcrop Area
- j Swamp

White Metal Resources	
Date: 17/11/2015 Author: Paul Office: Thunder Bay Drawing: Scale: 1:2500	<h3>Prospecting Map Claim 4262400</h3>
Projection: UTM Zone 17 (NAD 83)	

Appendix 1

Prospecting Log (John Hussey)

November 2, 2015- I proceeded south on a gravel road off of Highway 101 for approximately 3.2 kilometers then traversed south to the #1 post of claim 4262400 a distance of 1450 meters. I then traversed south on the eastern claim line to the #2 post then went over 100 meters to the west then proceeded north to the north claim boundary, then 100 meters west and south again to the southern boundary of the claim. I then went approximately 100 meters west again and then north back to the north boundary. I took three samples from outcrop. The bush is mixed with balsam-spruce-birch and tag alders in the low lying areas. I marked the sample locations and ends of traverse lines with GPS reading.

Appendix 2

Sample Description Sheet

Sample Number	Easting	Northing	Sample Description
Sample #1	429945	5338982	Grey metasediment, barren
Sample #2	429840	5338869	Grey metasediment, barren
Sample #3	429719	5338722	Green mafic metavolcanic, 1- 2% pyrite

Appendix 3
Assay Certificate – A15-09772
Actlabs



Date Submitted: 11-Nov-15
Invoice No.: A15-09772
Invoice Date: 12-Nov-15
Your Reference: Nov. 11/15

White Metal Resources
3250 Highway,130 Rosslyn
ON
Canada

ATTN: Mike Stares

CERTIFICATE OF ANALYSIS

3 Rock samples were submitted for analysis.

The following analytical package was requested:

Code 1A2-Timmins Au - Fire Assay AA

REPORT **A15-09772**

This report may be reproduced without our consent. If only selected portions of the report are reproduced, permission must be obtained. If no instructions were given at time of sample submittal regarding excess material, it will be discarded within 90 days of this report. Our liability is limited solely to the analytical cost of these analyses. Test results are representative only of material submitted for analysis.

Notes:

If value exceeds upper limit we recommend reassay by fire assay gravimetric-Code 1A3

CERTIFIED BY:

A handwritten signature in black ink, appearing to read "Emmanuel Esemé".

Emmanuel Esemé , Ph.D.
Quality Control



Results

Analyte Symbol	Au
Unit Symbol	ppb
Lower Limit	5
Method Code	FA-AA
1	< 5
2	6
3	< 5

QC

Analyte Symbol	Au
Unit Symbol	ppb
Lower Limit	5
Method Code	FA-AA
OxD108 Meas	407
OxD108 Cert	414
SF67 Meas	822
SF67 Cert	835.000
Method Blank	< 5
Method Blank	< 5