

PROSPECTING REPORT

WEST PORCUPINE PROPERTY
Claim 4263028
Reeves Township, Northeastern Ontario

For
White Metal Resources Corp
3250 Highway 130
Rosslyn, ON
P7K 0B1

Prepared By:
Michael Stares
August 6, 2015

Table of Contents

| | Page |
|-----------------------|------|
| 1.0 Introduction..... | 1 |
| 2.0 Location..... | 1 |
| 3.0 Access..... | 1 |
| 4.0 Prospecting..... | 1 |

Figures

| | |
|---------------------------------|---|
| Figure 1 – General Location Map | 2 |
| Figure 2 – Claims Map | 3 |

Maps

| | | |
|-------|-------------------------------|---------------|
| Map 1 | Prospecting Map Claim 4263028 | Scale 1:2,500 |
|-------|-------------------------------|---------------|

Appendices

| | |
|------------|--------------------------------|
| Appendix 1 | Prospecting Log |
| Appendix 2 | Sample Description Sheet |
| Appendix 3 | Assay Certificate – Accurassay |

1.0 Introduction

At the request of White Metal Resources prospecting work was carried out on claim 4263028 of the West Porcupine Property between June 29, 2015 and July 3, 2015 by John Hussey of Timmins Ontario.

2.0 Location

The West Porcupine property is located about 62 km south west of the city of Timmins Ontario (Figure 1). The property lies within the Timmins Mining Division on NTS map sheets 42B01 and 42A04. The approximate centre of claim 4263028 is UTM 421800E, 5338100N, Zone 17, NAD83 and longitude/latitude 82°03'W and 48°12'N.

3.0 Access

Access to the claim can be gained by following Highway 101 southwest from Timmins to an old road/trail located at UTM 421844E, 5341778N. Then proceed south for approximately 3.5 km to the north boundary of claim 4263028 located at UTM 421830E, 5338009N.

4.0 Claim Description

Claim 4263028 is located in Reeves Township on claim map G-1206 and consists of 3 units totaling approximately 48.5 hectares

5.0 Prospecting

Prospecting was carried out on claim 4263028 for three days from June 29 to July 3, 2015. Location control was maintained by following the existing blazed claim lines and carrying out north-south traverses using a compass and handheld GPS unit. All locations are noted as being in Universal Transverse Mercator projection using North American Datum 83 in Zone 17 coordinates.

Work was carried out to locate any historic workings and assess the potential of surrounding rock to host significant gold mineralization. Daily logs are presented in Appendix 1. During the traverses overburden cover, topography and vegetation were noted. Samples are described (Appendix 2) and seven samples were taken for lab analysis (Appendix 3). Results of prospecting are plotted on Map 1 at a scale of 1:2500.

Prospecting in the field and supervision was carried by the following personnel:

Mr Michael Stares
3250 Highway 130
Rosslyn, ON P7K 0B1



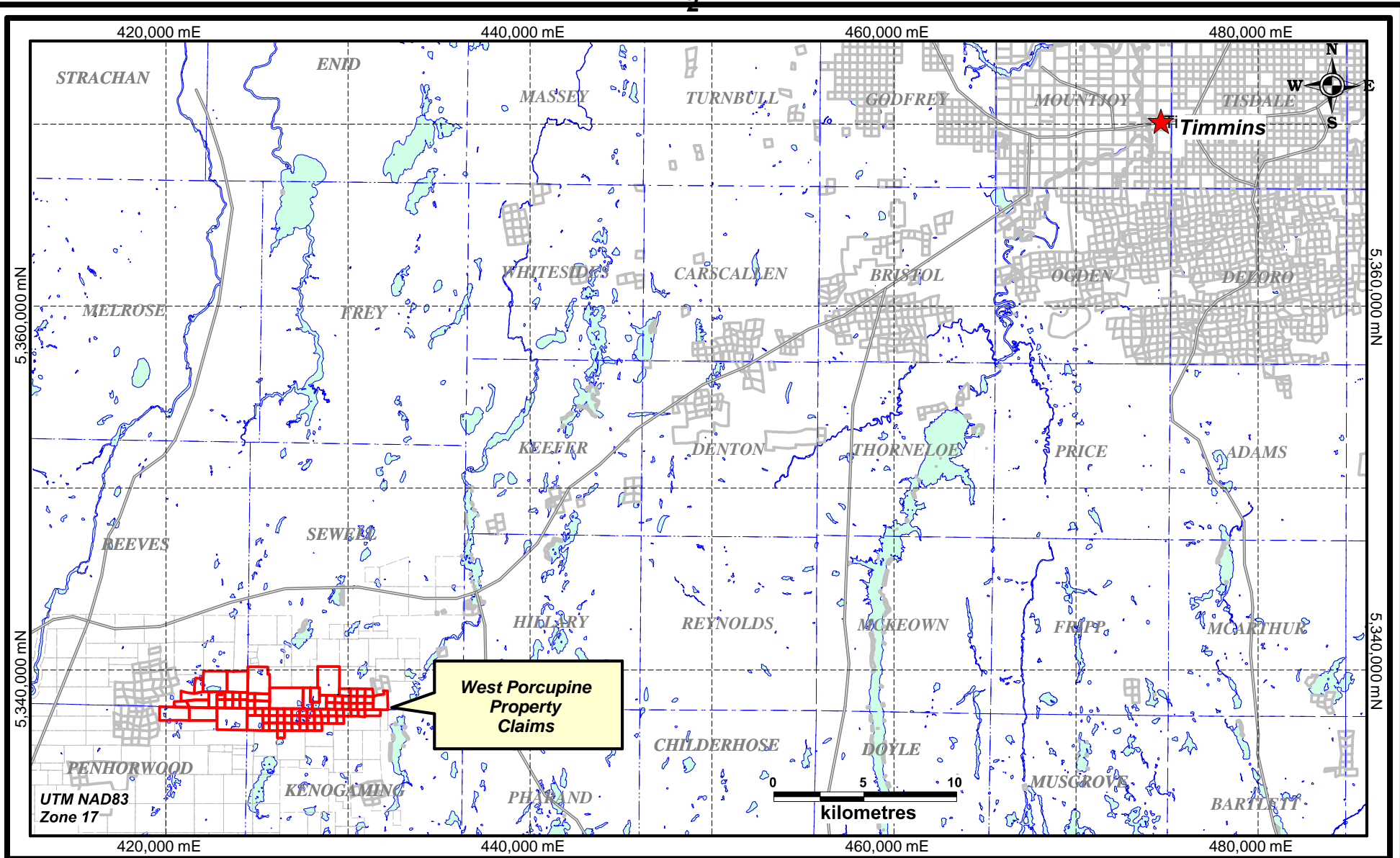
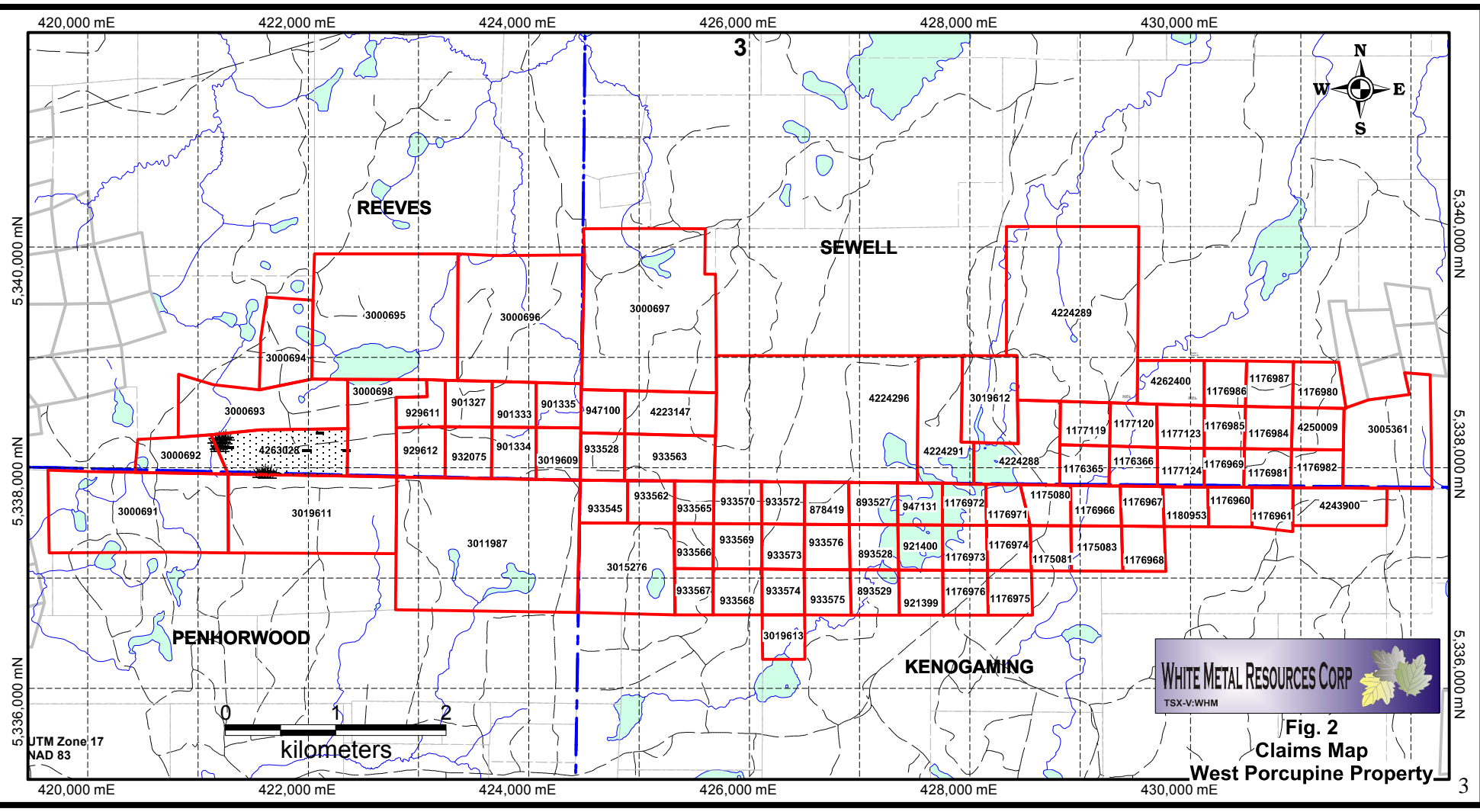


Fig. 1
Location Map
West Porcupine Property



UTM Zone 17
NAD 83



WHITE METAL RESOURCES CORP

TSX-V:WHM

Fig. 2
Claims Map
West Porcupine Property

3

3

Mr. John Hussey
700 Maclean Drive
Timmins, ON P4N 8A1

A handwritten signature in black ink that reads "John Hussey". The signature is written in a cursive style with a period at the end.

Respectfully Submitted,

A handwritten signature in black ink that reads "Michael Stares". The signature is written in a cursive style.

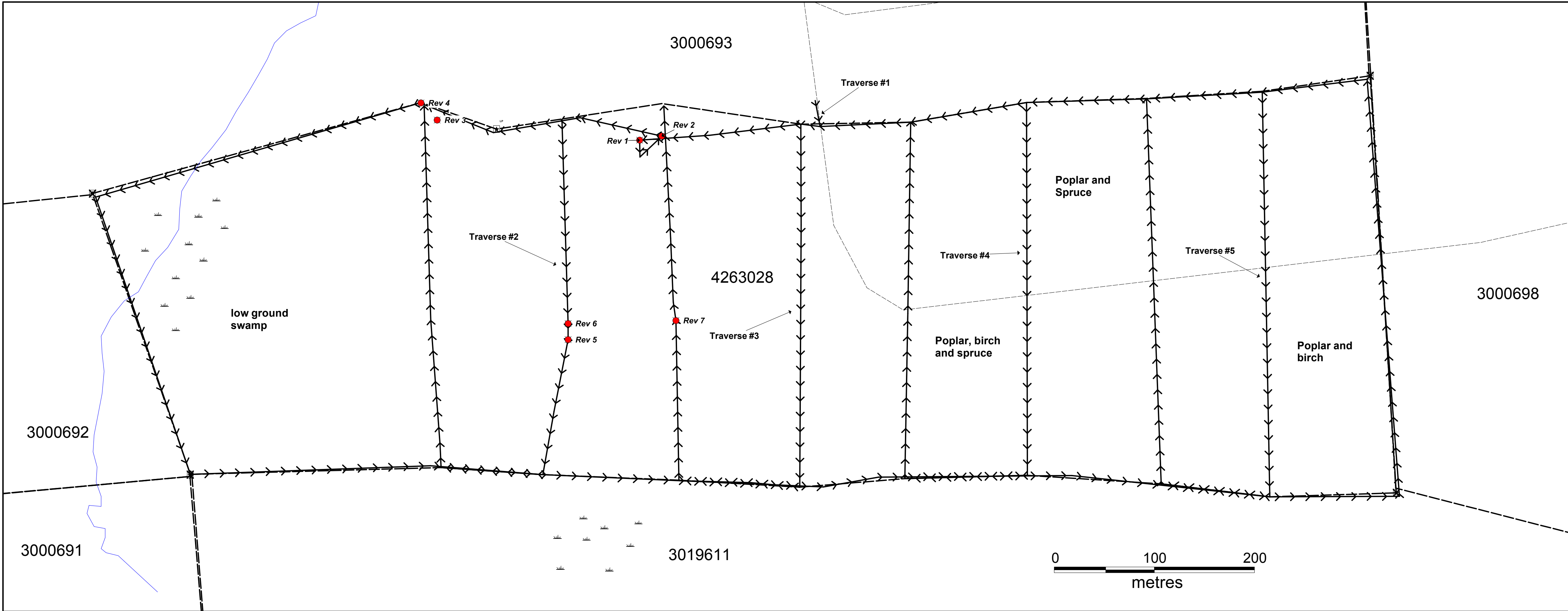
Michael Stares

August 6, 2015

Map 1

Sample Location and Traverse Map-

Scale 1:2,5000



LEGEND

- Swamp
- Claim Line
- Traverse line, direction
- Crop Location, Number

White Metal Resources

| | |
|---------------------|--|
| Date: 20/07/2015 | West Porcupine Property Prospecting Map Claim 4263028 |
| Author: PN | |
| Office: Thunder Bay | |
| Drawing: | |
| Scale: 1:2500 | Projection: Custom Projection |

0 25 50 100
metres

Appendix 1

Prospecting Log (John Hussey)

June 29, 2015- Traversed west on the north boundary of claim 4263028 for approximately 730 meters to the #4 post which lies in low swampy ground (#1 Map 1). I collected 4 samples (Rev #1-4) from outcrop. Proceeded south along the claim line for about 310 meters to the #3 post. Then proceeded east along the south boundary for about 1200 meters to the #2 post. Went north for about 420 meters to the #1 post then west along the north boundary for 550 meters to the old road where the traverse started. Claim post locations were recorded to plot on map1.

July 2, 2015- Did two traverses (#2 & #3 Map 1) proceeding south then going approximately 100 meters along claim line before proceeding north. Collected 3 samples (Rev#5-7).

July 3, 2015- Did two traverses on the east side of the claim (#4 & #5 Map1). No outcrop was noted and vegetation consisted of poplar, birch and some spruce.

Appendix 2
Sample Description Sheet

| Sample Number | Easting | Northing | Sample Description |
|----------------------|----------------|-----------------|---------------------------|
| Rev 1 | 421655 | 5338363 | Meta volcanic |
| Rev 2 | 421677 | 5333867 | Meta volcanic |
| Rev 3 | 421454 | 5338383 | Meta volcanic |
| Rev 4 | 421438 | 5338400 | Meta volcanic |
| Rev 5 | 421584 | 5338165 | Meta volcanic |
| Rev 6 | 421584 | 5338181 | Meta volcanic |
| Rev 7 | 421691 | 5338184 | Meta volcanic |

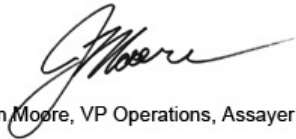
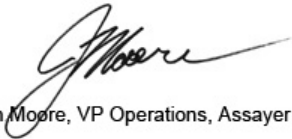

Appendix 3
Assay Certificate – 2051_201542920
Accurassay Labratories

Monday, July 27, 2015

Final CertificateWhite Metal Resources
3250 Hwy 130
Rosslyn, ON, CAN
P7K0B1
Email: starcon@tbaytel.netDate Received: 07/13/2015
Date Completed: 07/27/2015
Job #: 201542920
Reference:
Sample #: 7

| Acc # | Client ID | Au g/t (ppm) |
|--------|------------|-----------------|
| 259330 | Rev #1 | <0.005 |
| 259331 | Rev #2 | <0.005 |
| 259332 | Rev #3 | 0.014 |
| 259333 | Rev #4 | 0.044 |
| 259334 | Rev #5 | <0.005 |
| 259335 | Rev #6 | <0.005 |
| 259336 | Rev #7 | <0.005 |
| 259337 | Rev #7 Dup | <0.005 |

APPLIED SCOPES: ALP1, ALFA1

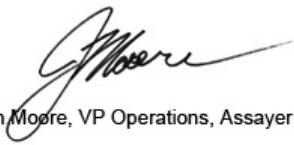
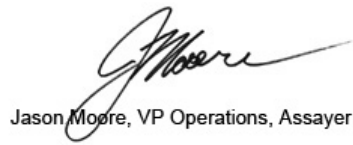
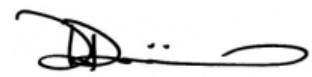
Validated By:**Certified By:****Authorized By:**
Jason Moore, VP Operations, Assayer
Jason Moore, VP Operations, Assayer
Derek Demianiuk, VP Quality**The results included on this report relate only to the items tested.****The Certificate of Analysis should not be reproduced except in full, without the written approval of the laboratory.**

Monday, July 27, 2015

Final CertificateWhite Metal Resources
3250 Hwy 130
Rosslyn, ON, CAN
P7K0B1
Email: starcon@tbaytel.netDate Received: 07/13/2015
Date Completed: 07/27/2015
Job #: 201542920
Reference:
Sample #: 7**Control Standards**

| QC Type | QC Performance (ppm) | Mean (ppm) | Std Dev (ppm) |
|---------|----------------------|------------|---------------|
| KL01 | 0.312 | 0.394 | 0.011 |

APPLIED SCOPES: ALP1, ALFA1

Validated By:
Jason Moore, VP Operations, Assayer**Certified By:**
Jason Moore, VP Operations, Assayer**Authorized By:**
Derek Demianiuk, VP Quality**The results included on this report relate only to the items tested.****The Certificate of Analysis should not be reproduced except in full, without the written approval of the laboratory.**