

2.55614

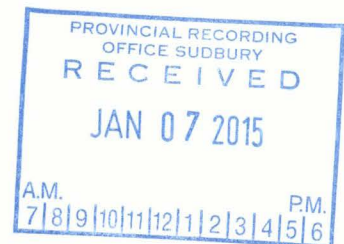
**REPORT ON 2014 EXPLORATION  
FOR  
WILLIAM MURRAY YAHN  
(CLIENT #410363)  
LAURIE TOWNSHIP PROPERTY**

**NTS 53A/12  
UTM COORDINATES  
MAP DATUM NAD 83  
Number 1 Post  
0285421E / 5383769N**

**THUNDER BAY MINING DIVISION**

**Claim TB #4268327**

**Prepared by William M. Yahn  
Sept 2014**



### Report on activity

The work being reported is for Claim #TB 4268327 located in Laurie Township. It is situated approximately 70 kilometers west of Thunder Bay, Ontario. It is a two claim block. I also have a second claim to the northeast #TB 4268315. On September 23 I visited both claims and have split the expenses on the respective assessment reports.

The claim was staked in 2012 (Jan 14th) by Jason Shaver on behalf of Bill Snell. On November 15, 2013 the claim was transferred to myself (William Murray Yahn). On November 19<sup>th</sup> I performed georeferencing work on this claim (W1340.02796) as my assessment work for last year.

This fall I revisited the claim to begin regular assessment work. Initially it was to transverse the area to develop a plan to assay the area. This was started on Sept 23<sup>rd</sup> for half a day which was shared with TB 4268315.

Shabaqua is an active gold zone with activity to the southwest.

### Work completed and results of assays taken

September 23: Bill Yahn, one truck with utility trailer, ATV, Rock Saw, Chain Saw, Tools

On Sept 23<sup>rd</sup> I traversed the claim looking for areas of interest. I used an ATV for travelling along roads and paths. From the trail I couldn't find decent access into the claim by Quad. I walked the eastern boundary from the #1 corner post to the #2 corner post and moved in and out of the claim.

September 26: Bill Yahn, Terry Yahn, two vehicles (one Jeep, one truck with utility trailer), ATV, Rock Saw, Chain Saw, Tools and supplies

On Sept 26<sup>th</sup> I returned to the area, along with an assistant, to traverse the area. This time we headed straight to the southern portion of the claim. We marked a waypoint #476 (see attached Map Source printout). We headed off road along the claim line just slightly north and west of the #2 corner. We cut in and out of the property to locate outcrops and rock type. At the southern claim boundary we marked this point as waypoint #477 and headed westerly. Then headed north from our trail to check out some small ridges. The ground rose quickly as we headed in. We marked another waypoint #478 near an opening with a ridge line and outcrops. We didn't see any mineralization in the rock but

decided to continue. We searched for a Line Post but failed to find it on this occasion. There was plenty of recent flagging in the area and we found another claim post which had two tags attached. It was the #1 corner post for claim #4256954 and the #4 corner post for claim #4256953.

We determined there seemed to be a better access to the area from the north and that would be our plan for our next visit.

We didn't see anything interesting, so no samples were taken on this day.

September 28: Bill Yahn, Terry Yahn, two vehicles (one Jeep, one truck with utility trailer), ATV, Rock Saw, Chain Saw, Tools and supplies

On Sept 28<sup>th</sup> we returned to the same area to traverse the area. We followed a bush road that ran well north of this claim. After reaching the closest point to our north claim boundary with the Quad, we continued on foot and were able to locate a line post ( post and tag) on the north claim line. We were on high ground just north of the areas we visited on the 26<sup>th</sup>. We took two surface samples. Assay results are as follows:

Sample #447242 (certificate attached)

The sample was taken from the edge of an open area with little overburden. The sample contained light brown to dark grey rhyolite with pyrite and quartz.

Full assay showing no gold, but 3.35% Aluminum, 2.15% Calcium, 6.23% Iron and 2.45% Magnesium. Picture provided.

Sample #447243 (certificate attached)

The sample was taken from the other side of the exposed area just 30 meters east and 15 meters north of our first sample. At this location the rock begins to drop off towards the valley and was more fractured (easier to gain a good sample). Here the rock had more quartz and varied mineralization. Full assay showing no gold, but 3.03% Aluminum, 2.06% Calcium, 7.39% Iron and 2.05% Magnesium. Picture provided.

**GPS CO-ORDINATES (NAD 83 DATUM USED)**

**UTM ZONE 16U**

<b>SAMPLE #</b>	<b>TAG #</b>	<b>EASTING</b>	<b>NORTHING</b>
<b>Claim 4268327 #1 post</b>		<b>0285421</b>	<b>5383769</b>
<b>WP486</b>	<b>447242</b>	<b>0285169</b>	<b>5383482</b>
<b>WP487</b>	<b>447243</b>	<b>0285199</b>	<b>5383497</b>

**People and Days Worked**

**Sept 2014**

**Prospecting**

**Traversing**

**Physical: cleaning, sampling.**

<b>Bill Yahn</b>	<b>2.5</b>	<b>Sept 23 (half day only), 26, 28</b>
------------------	------------	--

---

<b>Terry Yahn</b>	<b>2</b>	<b>Sept 26, 28</b>
-------------------	----------	--------------------

---

<b><u>Total</u></b>	<b><u>4.5</u></b>	<b><u>days.</u></b>
---------------------	-------------------	---------------------



### **Going forward**

**We know the potential for gold in the Shabaqua area. However the previous owner of the claim did not sample the claim leaving me to base our plans on what was happening in the immediate area.**

**The work we completed in these two days will be followed up with additional samples which will be taken in some of the western areas which we know can also be accessed from the west.**

**William Murray Yahn, Client #410363**

## **ATTACHMENTS**

<b>SCHEDULE 1</b>	<b>Map of Claim area</b>
<b>SCHEDULE 2</b>	<b>Invoice from Accurassay Laboratories</b>
<b>SCHEDULE 3</b>	<b>Full ICP Assay report from Accurassay Lab. Dated Oct 20, 2014</b>
<b>SCHEDULE 4</b>	<b>Map Source map with Corner posts and waypoints.</b>







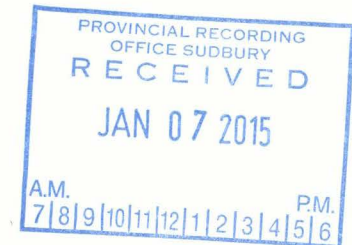
People and Days Worked

Sept 2014

Prospecting

Traversing

Physical: cleaning, sampling.



Bill Yahn

2.5 Sept 23 (half day only), 26, 28

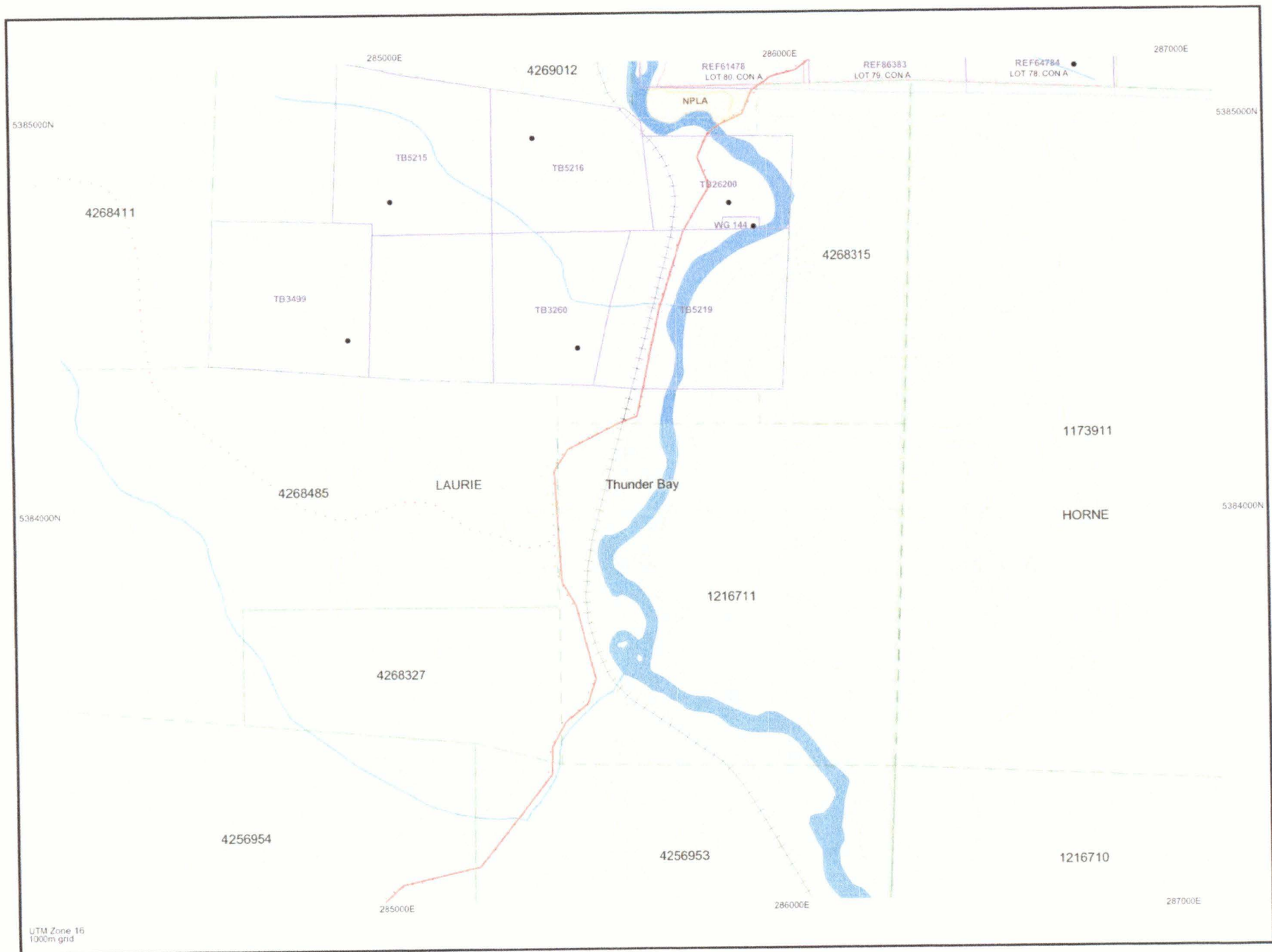
A handwritten signature in dark ink, appearing to be "Bill Yahn", written over a horizontal line.

Terry Yahn

2 Sept 26, 28

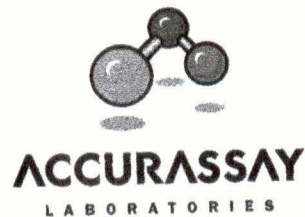
A handwritten signature in dark ink, appearing to be "Terry Yahn", written over a horizontal line.

Total 4.5 days.









447243



Branches: Thunder Bay ON, Timmins ON,  
Sudbury (Lively) ON, Gambo NL,  
Rouyn-Noranda QC, Schefferville QC  
Corporate Office: London ON

Date	Sept 28/14
Sample by	WJF
Location	285201 5383497
Hole	
Footage	61m 468327

**ACCURASSAY**  
LABORATORIES

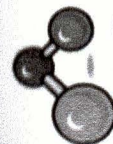


Branches: Thunder Bay ON, Timmins ON,  
Sudbury (Lively) ON, Gambo NL,  
Rouyn-Noranda QC, Schefferville QC  
Corporate Office: London ON

447243



**ACCURASSAY**  
LABORATORIES



Branches: Thunder Bay ON, Timmins ON,  
Sudbury (Lively) ON, Gambo NL,  
Rouyn-Noranda QC, Schefferville QC  
Corporate Office: London ON

447243





PROPER TAG # 

