

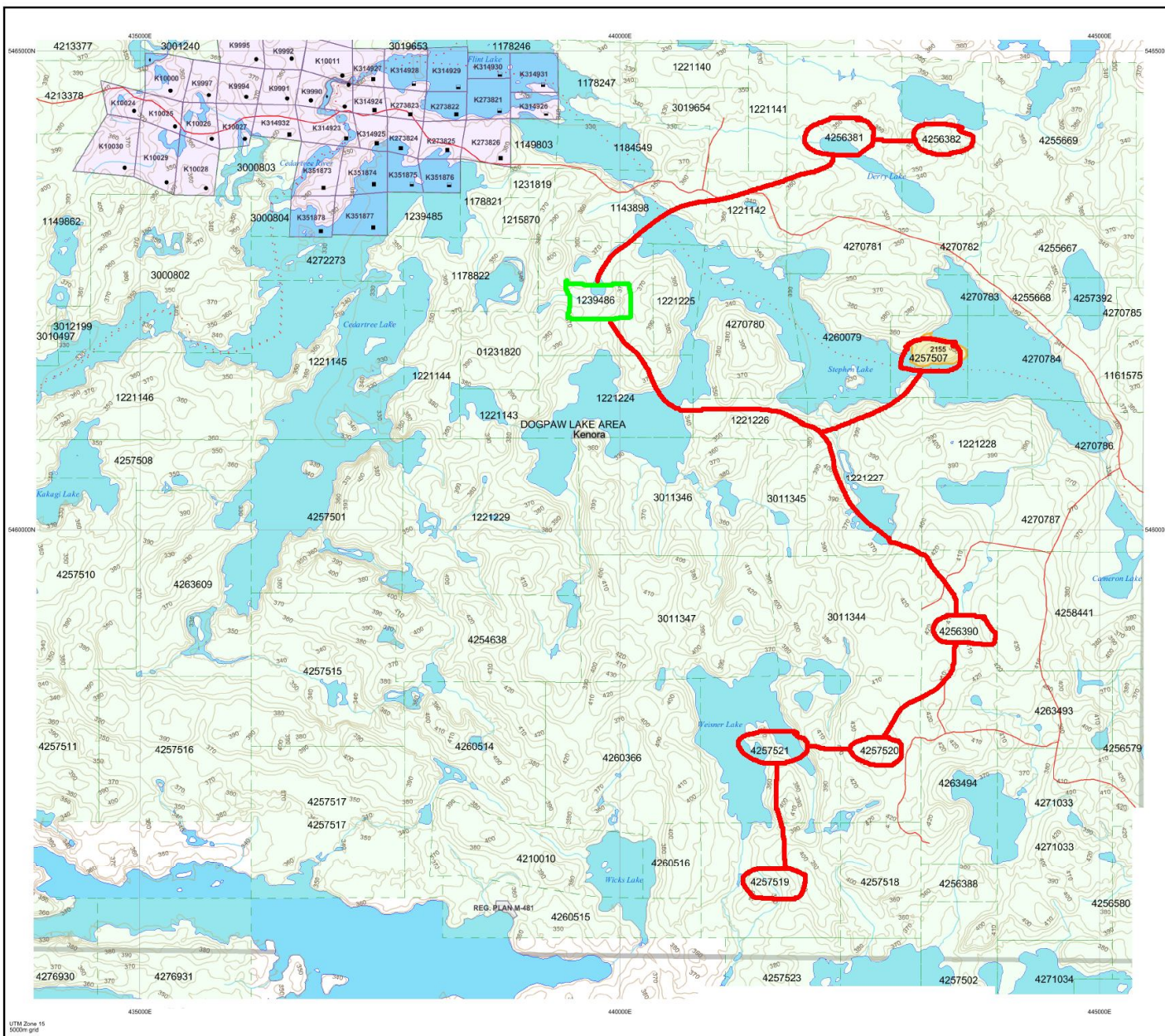
Date / Time of Issue: Thu Jan 30 12:17:21 EST 2014

TOWNSHIP / AREA
DOGPAW LAKE AREA

PLAN
G-2613

ADMINISTRATIVE DISTRICTS / DIVISIONS

Mining Division Kenora
Land Titles/Registry Division KENORA
Ministry of Natural Resources District KENORA



TOPOGRAPHIC

- Administrative Boundaries
- Township
- Concession, Lot
- Provincial Park
- Indian Reserve
- CRR, PI & File
- Contour
- Mine Shafts
- Mine Headframe
- Railway
- Road
- Trail
- Natural Gas Pipeline
- Utilities
- Tower

Land Tenure

- Freehold Patent
 - Surface And Mining Rights
 - Surface Rights Only
 - Mining Rights Only
- Leasehold Patent
 - Surface And Mining Rights
 - Surface Rights Only
 - Mining Rights Only
- Licence of Occupation
 - Uses Not Specified
 - Surface And Mining Rights
 - Surface Rights Only
 - Mining Rights Only
- Land Use Permit
- Order In Council (Not open for staking)
- Water Power Lease Agreement
- Mining Claim
- Filed Only Mining Claims

LAND TENURE WITHDRAWALS

- 1234 Areas Withdrawn from Disposition
- Mining Acts Withdrawal Types
 - Wam Surface And Mining Rights Withdrawn
 - Wsm Surface Rights Only Withdrawn
 - Wim Mining Rights Only Withdrawn
 - Wom Order In Council Withdrawal Types
 - Wsm Surface And Mining Rights Withdrawn
 - Wsm Surface Rights Only Withdrawn
 - Wim Mining Rights Only Withdrawn
- NS IMPORTANT NOTICES

REVISIONS

WILSON	LOBTICK BAY AREA	ATKWA LAKE AREA
TWEEDSMUR	DOGPAW LAKE AREA	BOWMAN LAKE AREA
PHILLIPS	HONEYMAN LAKE AREA	BROWN LAKE AREA
SMITH LAKE AREA	GOOSON	BASH LAKE AREA



LAND TENURE WITHDRAWAL DESCRIPTIONS (list may not be complete)

Identifier	Type	Date	Description
2155	Wam	Jan 1, 2001	W20182 MAR 1/72 M&S 162473

Contiguous staked mining claims (red) where assessment credit is to be distributed

Source for assessment distributions from 2013 drill program (green)

Those wishing to stake mining claims should consult with the Provincial Mining Records' Office of the Ministry of Northern Development and Mines for additional information on the status of the lands shown herein. This map is not intended for navigational, survey, or land title determination purposes as the information shown on this map is compiled from various sources. Completeness and accuracy are not guaranteed. Additional information may also be obtained through the local Land Titles or Registry Office, or the Ministry of Natural Resources.

The information shown is derived from digital data available in the Provincial Mining Records' Office at the time of downloading from the Ministry of Northern Development and Mines web site.

General Information and Limitations
 Contact Information:
 Provincial Mining Records' Office
 Willet Green Miller Centre 933 Ramsey Lake Road
 Sudbury ON P2E 6E5
 Home Page: www.mdmn.gov.on.ca/MNDMMINES/LANDS/misnmpn.htm

Toll Free: 1 (888) 415-6845 ext 5742
 Tel: 1 (877) 670-1444
 Fax: 1 (877) 670-1444
 Map Datum: NAD 83
 Topographic Data Source: Land Information Ontario
 Mining Land Tenure Source: Provincial Mining Records' Office

This map may not show unregistered land tenure and interests in land including certain patents, leases, assessments, right of ways, flooding rights, licences, or other forms of disposition of rights and interests from the Crown. Also certain land tenure and land uses that restrict or prohibit free entry to staked mining claims may not be illustrated.