

Oct 15/14

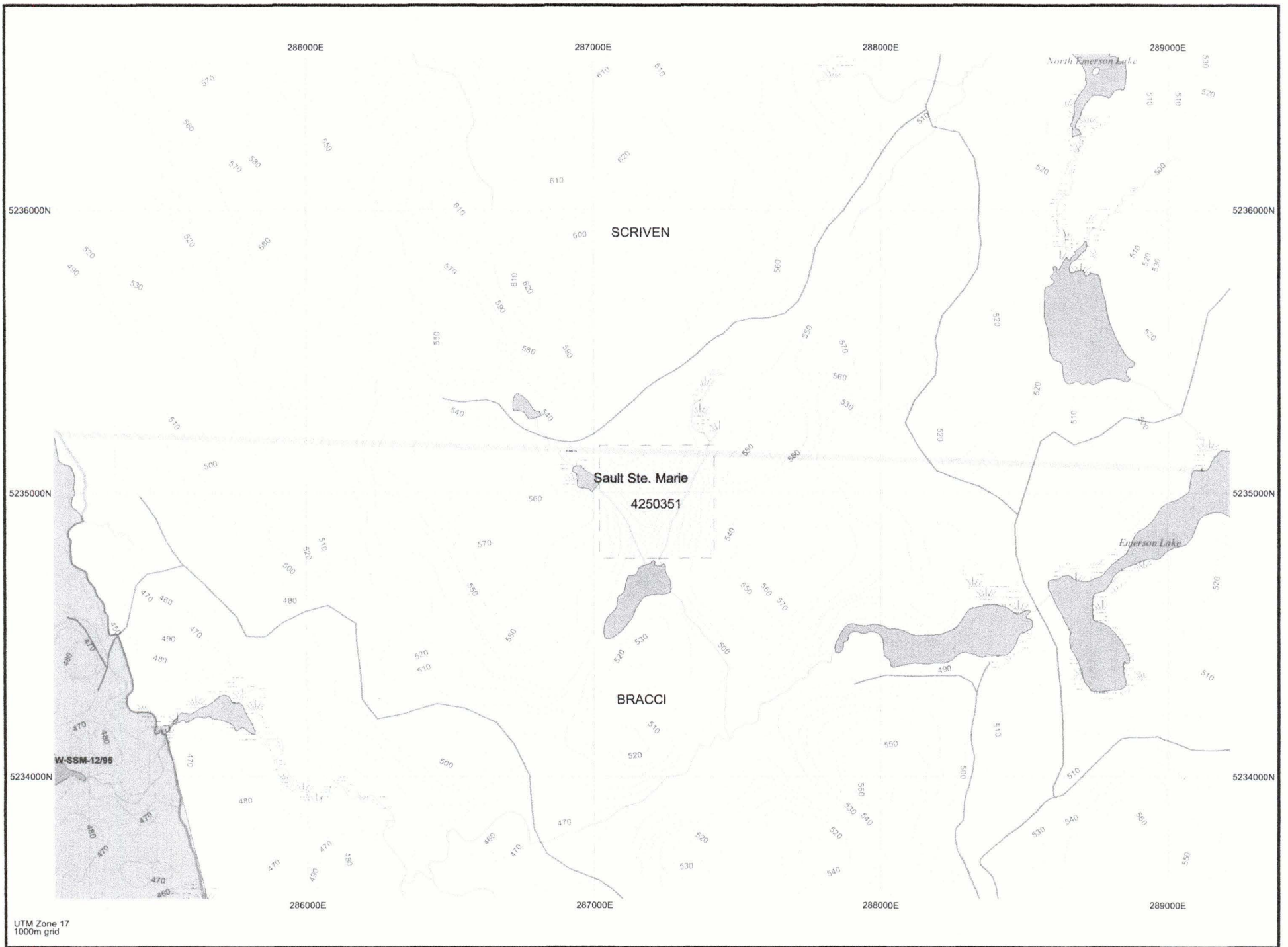
Dear Sirs

To Whom it May Concern.

Enclosed is the following maps. Map no. 1 shows where my claim is situated in Bracci + Scriven township in Sault Ste Marie district. Assay report CL#3-5-6-8 was taken from outcrop no#2 on map no#2 and assay no# CL 1-2-4-7-9-10 was taken from outcrop no#1 on map #2.

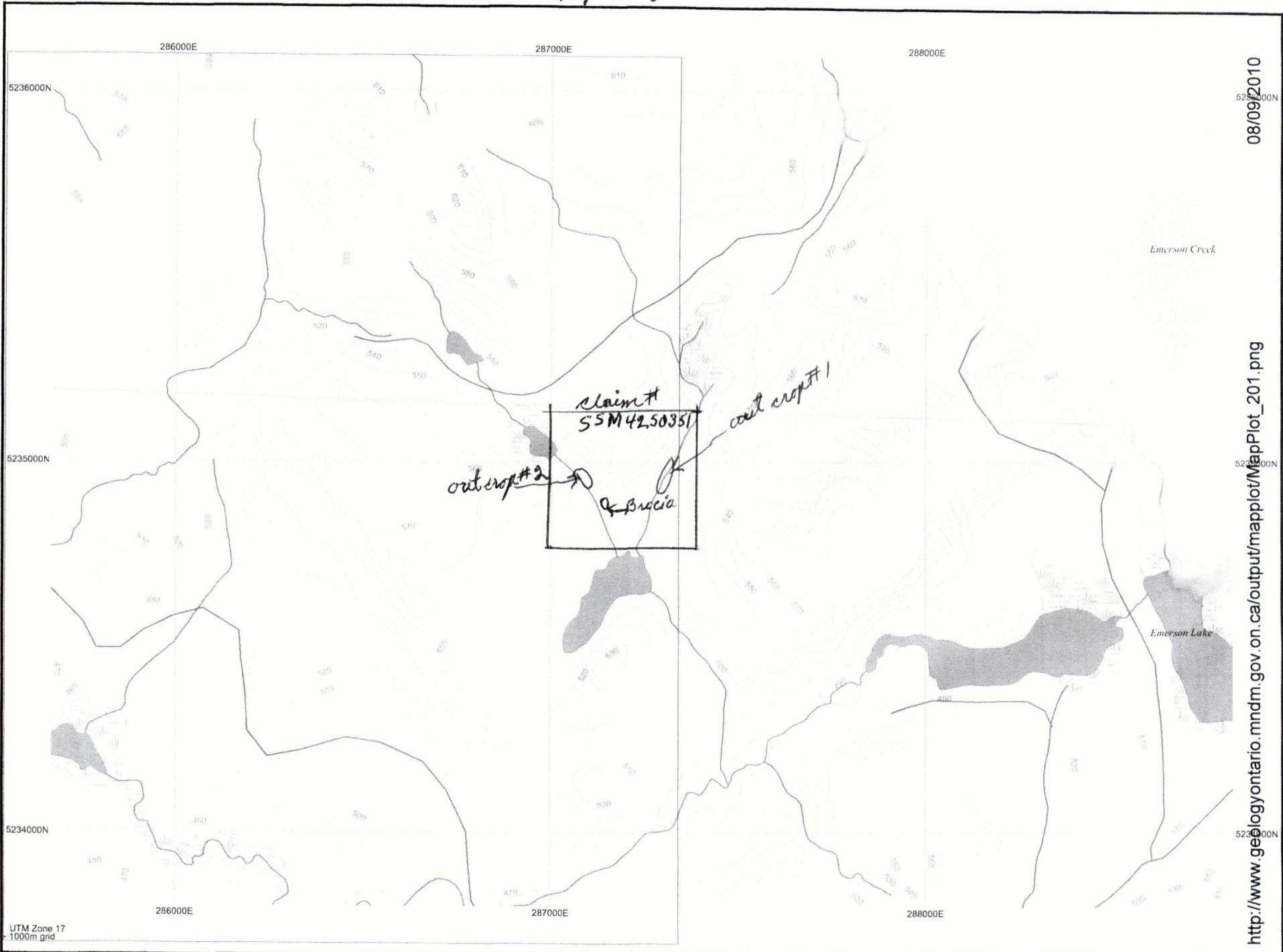
Thank you.

Carl Kehoe



UTM Zone 17
1000m grid

Map # 2



Results

Analyte Symbol	Hg	In	Re	Ir	K	Li	Nb	Mg	Mn	Na	P	Rb	Sb	Sc	Se	Sn	Sr	Ta	Te	Ti	Th	Tl	U
Unit Symbol	ppm	ppm	ppm	ppb	%	ppm	ppm	%	ppm	%	%	ppm	ppm	ppm	ppm	ppm	ppm	ppm	ppm	%	ppm	ppm	ppm
Detection Limit	1	0.2	0.001	5	0.01	0.5	0.1	0.01	1	0.01	0.001	15	0.1	0.1	0.1	1	1	0.5	0.1	0.01	0.2	0.1	0.5
Analysis Method	INAA	TD-MS	TD-MS	INAA	TD-ICP	TD-MS	TD-MS	TD-ICP	TD-ICP	INAA	TD-ICP	INAA	INAA	INAA	MULT IN AA/TD-I CP-MS	TD-MS	TD-ICP	INAA	TD-MS	TD-ICP	INAA	TD-MS	INAA
CL #1	< 1	< 0.2	0.013	< 5	0.10	20.7	3.9	1.38	440	1.57	0.039	< 15	0.5	7.8	2.1	1	56	< 0.5	0.5	0.40	2.1	< 0.1	< 0.5
CL#2	< 1	< 0.2	0.014	< 5	0.31	45.7	2.2	3.54	933	0.52	0.016	< 15	0.2	4.2	1.6	< 1	13	< 0.5	0.2	0.09	3.3	< 0.1	1.3
CL #4	< 1	< 0.2	0.010	< 5	0.47	53.1	0.5	3.96	737	3.13	0.045	< 15	< 0.1	26.5	2.8	< 1	28	< 0.5	0.1	0.43	2.3	0.1	< 0.5
CL #7	< 1	< 0.2	0.030	< 5	0.13	59.3	0.4	5.14	1150	1.19	0.080	< 15	< 0.1	18.9	1.6	< 1	12	< 0.5	0.1	0.45	5.1	< 0.1	2.6
CL # 9	< 1	< 0.2	0.005	< 5	0.43	59.8	0.4	4.04	729	2.93	0.060	< 15	0.2	24.4	1.6	< 1	25	< 0.5	< 0.1	0.54	2.4	0.1	< 0.5
CL #10	< 1	< 0.2	0.012	< 5	0.06	59.2	< 0.1	4.86	898	1.79	0.058	< 15	< 0.1	35.4	2.1	< 1	8	< 0.5	0.2	0.33	2.3	< 0.1	1.7

Quality Analysis ...



Innovative Technologies

Invoice No.: **A14-05531**
Purchase Order:
Invoice Date: **27-Aug-14**
Date submitted: **13-Aug-14**
Your Reference:
GST #: **R121979355**

Carl Kehoe
205 Hugell St
Sault St Marie Ont P6A 4G1
Canada

ATTN: Carl Kehoe

INVOICE

No. samples	Description	Unit Price	Total
6	RX1	\$ 10.00	\$ 60.00
6	1H2	\$ 40.75	\$ 244.50
		Subtotal: :	\$ 304.50
		HST-13% :	\$ 39.59
		AMOUNT DUE: (CAD) :	\$ 344.09

Net 30 days. 1 1/2 % per month charged on overdue accounts.

THE ABOVE AMOUNT HAS BEEN CHARGED TO VISA. THANK YOU! AUTH#427837-
AUG.29/14

Please reference the invoice number when making a payment by Bank/Wire transfer. Intermediary Bank Fees are the responsibility of the client.
Thank you!

ACTIVATION LABORATORIES LTD.

41 Bittern Street, Ancaster, Ontario Canada L9G 4V5 TELEPHONE +1.905.648.9611 or
+1.888.228.5227 FAX +1.905.648.9613

E-MAIL ancaster@actlabs.com ACTLABS GROUP WEBSITE <http://www.actlabs.com>



Final Report Activation Laboratories

Report Number: A14-06962
Report Date: 8/10/2014

Analyte Symbol	Au	Ag	Cu	Cd	Mo	Pb	Ni	Zn	S	Al	As	Ba	Be	Bi	Br	Ca	Co
Unit Symbol	ppb	ppm	ppm	ppm	ppm	ppm	ppm	ppm	%	%	ppm	ppm	ppm	ppm	ppm	%	ppm
Detection Limit	2	0.3	1	0.3	1	3	1	1	0.01	0.01	0.5	50	1	0.1	0.5	0.01	1
Analysis Method	INAA A / TD-ICP	TD-ICP	TD-ICP	TD-ICP	TD-ICP	TD-ICP A / TD-ICP A / TD-ICP	TD-ICP A / TD-ICP A / TD-ICP	TD-ICP	TD-ICP	TD-ICP	INAA	INAA	TD-ICP	TD-MS	INAA	TD-ICP	INAA
CL#3	22	< 0.3	865	< 0.3	2	< 3	9	42	0.1	1.63	1.2	< 50	< 1	0.2	6.8	0.2	7
CL#5	< 2	< 0.3	20	< 0.3	< 1	< 3	38	88	0.1	10.6	< 0.5	< 50	2	0.1	< 0.5	0.62	40
CL#6	< 2	< 0.3	48	< 0.3	< 1	< 3	47	112	0.25	9.36	2.2	< 50	2	0.5	< 0.5	0.94	61
CL#8	< 2	< 0.3	43	< 0.3	< 1	< 3	47	97	0.16	7.98	6.9	< 50	2	0.2	< 0.5	0.99	57