

We are committed to providing [accessible customer service](#).
If you need accessible formats or communications supports, please [contact us](#).

Nous tenons à améliorer [l'accessibilité des services à la clientèle](#).
Si vous avez besoin de formats accessibles ou d'aide à la communication, veuillez [nous contacter](#).

The Horn Gold Property
Sampling and Prospecting Report on the
Main Vein
Squaw Lake (G-3140)
Mining Division Patricia
Claim #3016741
Prospecting License No. 1000713

Submitted By:

Table of Contents

Property Summary, Access Ownership, Assay Certificate	3
Property Location Map (Fig.1)	4
Mining Claim Location Zones (Fig.2-1, Fig.2-2, Fig.2-3).....	5,6,7
Daily Log	8
Fig. 3	9
Rock Sample Description	10
Report of expenses.....	11
Conclusion	12
Assessment Work Performed on Mining Lands	13,14,15

Horn Gold Property Summary

Prospecting, sampling days, and stripping: July 31st, August 1st, August 2nd 2017 on the areas from the previous known Beep –Mat vein showings.

Strong alteration and mineralization was observed within the known gold vein zone.

Access and Ownership

The Horn Gold Property consists of 1 claim #3016741

The Squash Lake area property is 375 kilometers northwest of Thunder Bay, south of Savant Lake in Northwestern Ontario. The property is 100% owned by Edward Joseph Holbik. Access to the claim is via the Trans-Canada Highway 17 to Highway 599 at Ignace Ontario. Access to Sturgeon Lake is at the Whiskey Jack Lodge. Claim #3016741 is approximately 15 km by motor boat.

Assay Certificate

The Assay Certificate is attached to the back of this report. They were submitted in August 2017 to Craig Ravnass at the Kenora District Geologist's office.

FIG 1

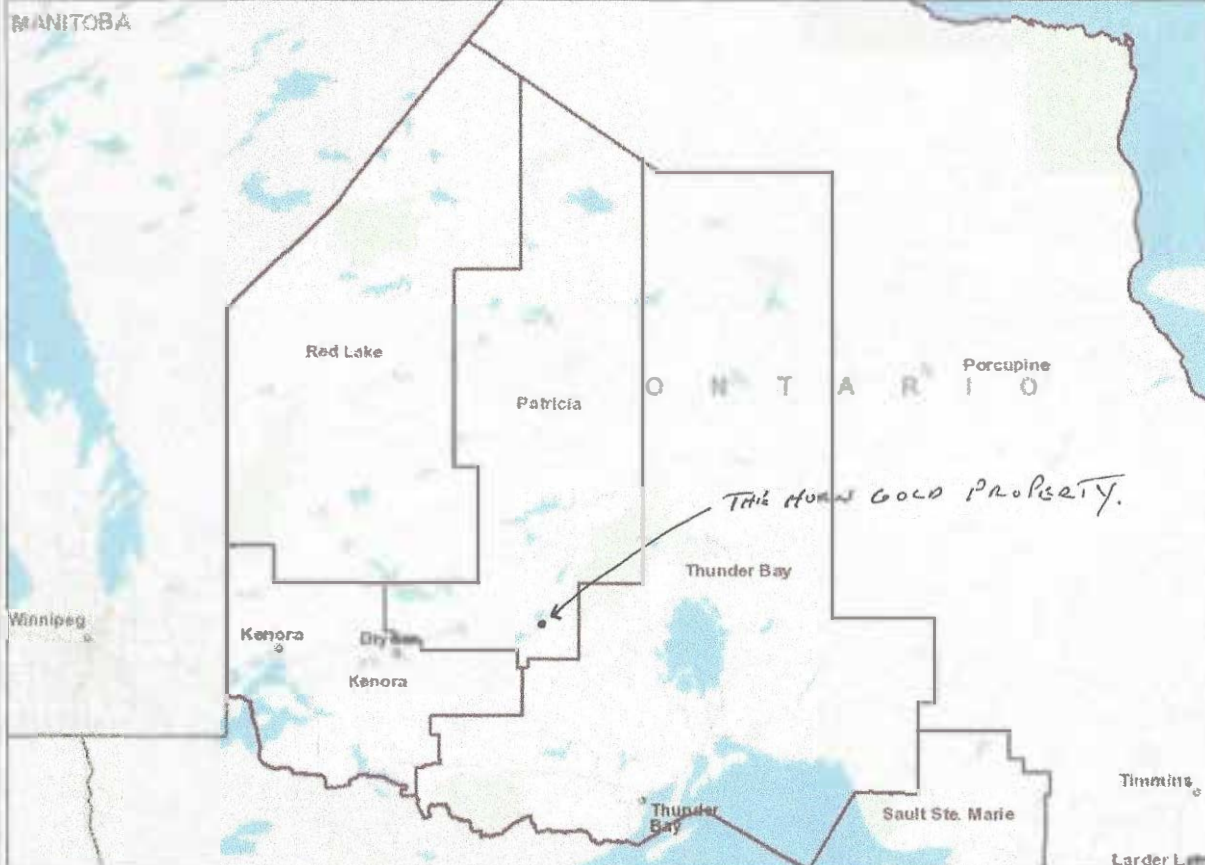


MINISTRY OF NORTHERN DEVELOPMENT AND MINES
CLAIMaps

Enter map title

Notes:
Enter map notes

HORN GOLD PROPERTY LOCATION



Legend

- Administration Boundaries**
 - Metropolitan
 - Regional District
 - Township
 - UTM Grid
 - Geographic Lot Fabric
 - Other Federal Land
- Mineral Tenure Grid**
 - MLTIC Tenure Grid
- Attention**
 - Notice
- Unpatented Claim**
 - AMU
 - Reconveyed
 - Pending
- Disposition**
 - Disposition
- Disposition Symbols**
 - Camp
 - Disposition Unknown/Pending
 - Freehold Patent Mining Rights Only
 - Freehold Patent Surface Rights Only
 - Freehold Patent Surface and Mining Rights
 - Land Use Permit
 - Leasehold Patent Mining Rights Only
 - Leasehold Patent Surface Rights Only
 - Leasehold Patent Surface and Mining Rights
 - License of Occupation Mining Use Only
 - License of Occupation Surface Use Only
 - License of Occupation on Surface and Mining Rights
 - License of Occupation Uses Not Specified
 - Other Claims
 - Other
 - Other
 - Other
- Geology Layers**
 - AMS Sites
 - AMS Features
 - Old Maps
 - Mineral Occurrences



Projection: Web Mercator

The Ontario Ministry of Northern Development and Mines shall not be liable in any way for the use of, or reliance upon, this map or any information on this map. This map should not be used for: navigation, a plan of survey, routes, nor locations.

Imagery Copyright Notices: Ontario Ministry of Natural Resources and Forestry; NASA Landsat Program; First Base Solutions Inc.; Aéro-Photo (1981) Inc.; DigitalGlobe Inc.; U.S. Geological Survey.

© Copyright for Ontario Parcel data is held by Queen's Printer for Ontario and its licensors and may not be reproduced without permission.

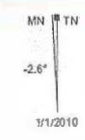
© Queen's Printer for Ontario, 2016



THE HORN GOLD PROPERTY FIG 2-1



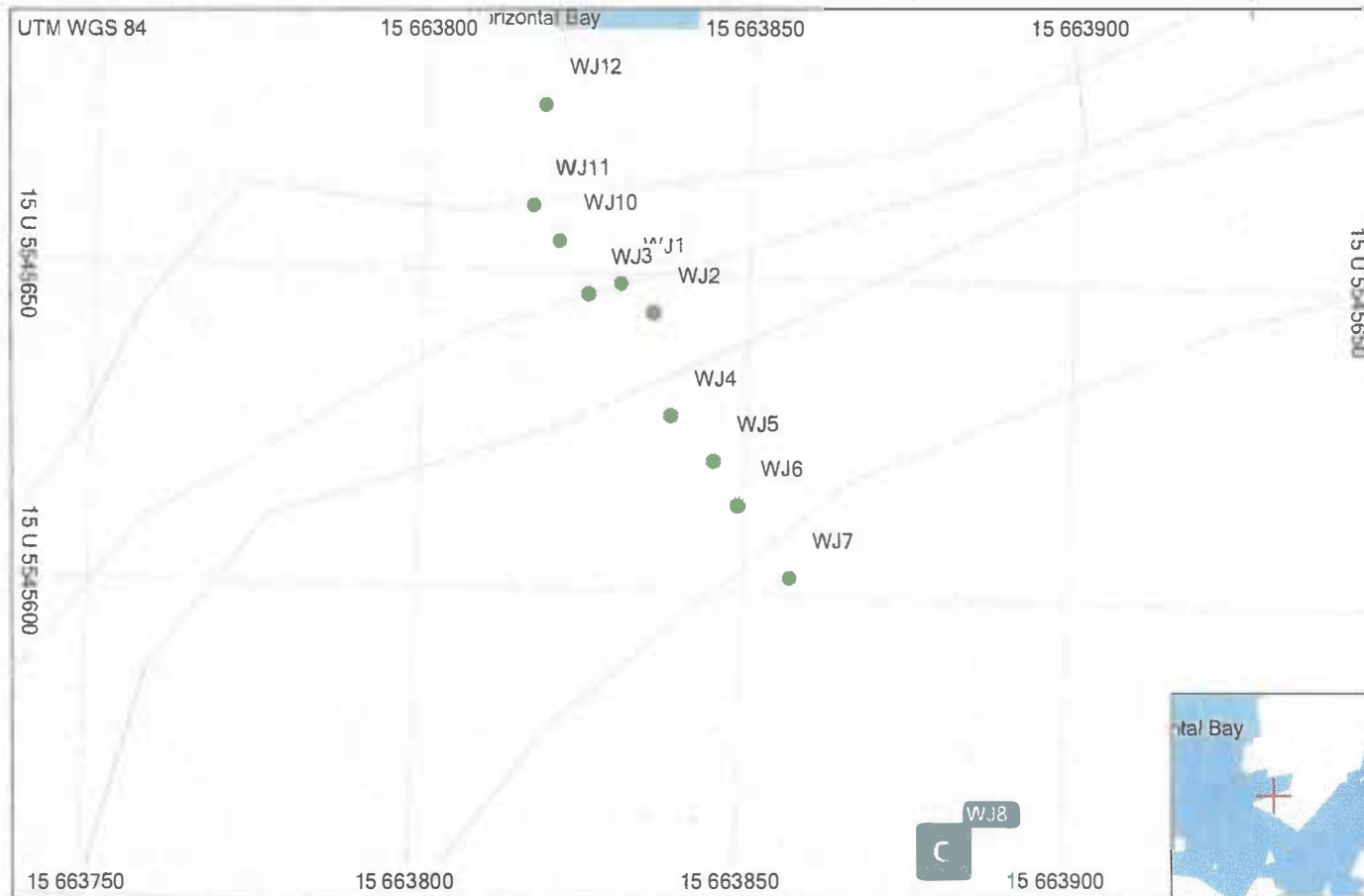
Topo Canada v4
©2009 Garmin® Ltd. or its subsidiaries
©DMTI Spatial 2008



3016741

GARMIN

THE HORN GOLD PROPERTY FIG 2-2



Topo Canada v4
©2009 Garmin® Ltd. or its subsidiaries
©DMTI Spatial 2008

3016741

0 m 15 m 30 m 45 m 60 m

GARMIN

MN TN
-26°
1/1/2010

The Horns Property File 201



MINISTRY OF NORTHERN DEVELOPMENT AND MINES
CLAIMaps

Enter map title

Notes:
Enter map notes



Legend

- Administration Boundaries**
 - Planning Districts
 - Regional Geographic District
 - Township and Area
 - UTM Grid
 - Geographic Grid
 - Other Federal Land
- Mineral Tenure Grid**
 - CUO Tenure Grid
- Alterations**
 - Holts
 - Unpatented Claim
 - Areas
 - Reclamation
 - Pending
- Deposition**
 - Deposited
- Deposition Symbols**
 - Case
 - Demolition/Alteration/Pending
 - Freehold Patent Rights Only
 - Freehold Patent Surface Rights Only
 - Freehold Patent Surface and Mining Rights
 - Leasehold Patent
 - Leasehold Patent Mining Rights Only
 - Leasehold Patent Surface Rights Only
 - Leasehold Patent Surface and Mining Rights
 - License of Occupation Mining Use Only
 - License of Occupation Surface Use Only
 - License of Occupation Surface and Mining Rights
 - License of Occupation Uses Not Specified
 - Order in Council
 - Trail
 - UTM
- Geology Layers**
 - KMIS Data
 - AIRIS Features
 - DRI Nodes
 - Surface Occurrences

0 0.28 km

Projection: Web Mercator



The Ontario Ministry of Northern Development and Mines shall not be liable in any way for the use of, or reliance upon, this map or any information on this map. This map should not be used for: navigation, a plan of survey, routes, nor locations.

© Queen's Printer for Ontario, 2016

Imagery Copyright Notices: Ontario Ministry of Natural Resources and Forestry; NASA Landsat Program; First Base Solutions Inc.; Aéro-Photo (1981) Inc.; DigitalGlobe Inc.; U.S. Geological Survey.

© Copyright for Ontario Parcel data is held by Queen's Printer for Ontario and its licensors and may not be reproduced without permission.



Horn Gold Property Daily Log 2017

July 31st 2017

- Sunny day left Thunder Bay, travelled to Shebandowan Ontario to pick up the boat and motor/trailer rental/Beepmat, Etc.
- Travelled to Upsala Ontario overnight.

August 1st 2017

- Overcast day, up early to travel to Ignace to pick up groceries for supper. Travelled North on Highway 599 to Whiskey Jack Lodge. Rented a cabin and launched boat. Met MNR district Geologist from Kenora, Craig Ravnass.
- Travelled to the mining claim 3016741 via water access and prospected the claim area and formed a game plan for further detailed prospecting, sampling, etc. It was decided at this tenure that 12 samples WS01-WS12 would be taken to get a reasonable idea of mineralization across the vein and across the outer flanks both North and South of this vein.

August 2nd 2017

- Up early seen heavy fog on Sturgeon Lake resulting in a delay but waited for the fog to lift before leaving for the claims. Travelled via boat to 301674 upon approaching the claim I discovered another participant heading to the claim with me. See Fig.3
- I worked on Georeferencing claim, prospected and stripped off rock areas.
- I secured and took rock sample WS01-ES12.
- Worked until late evening then returned to Whiskey Jack lodge

August 3rd 2017

- Up early on this overcast day to identify and document samples.
- Travelled to Shebandowan Ontario to return boat rental and equipment.

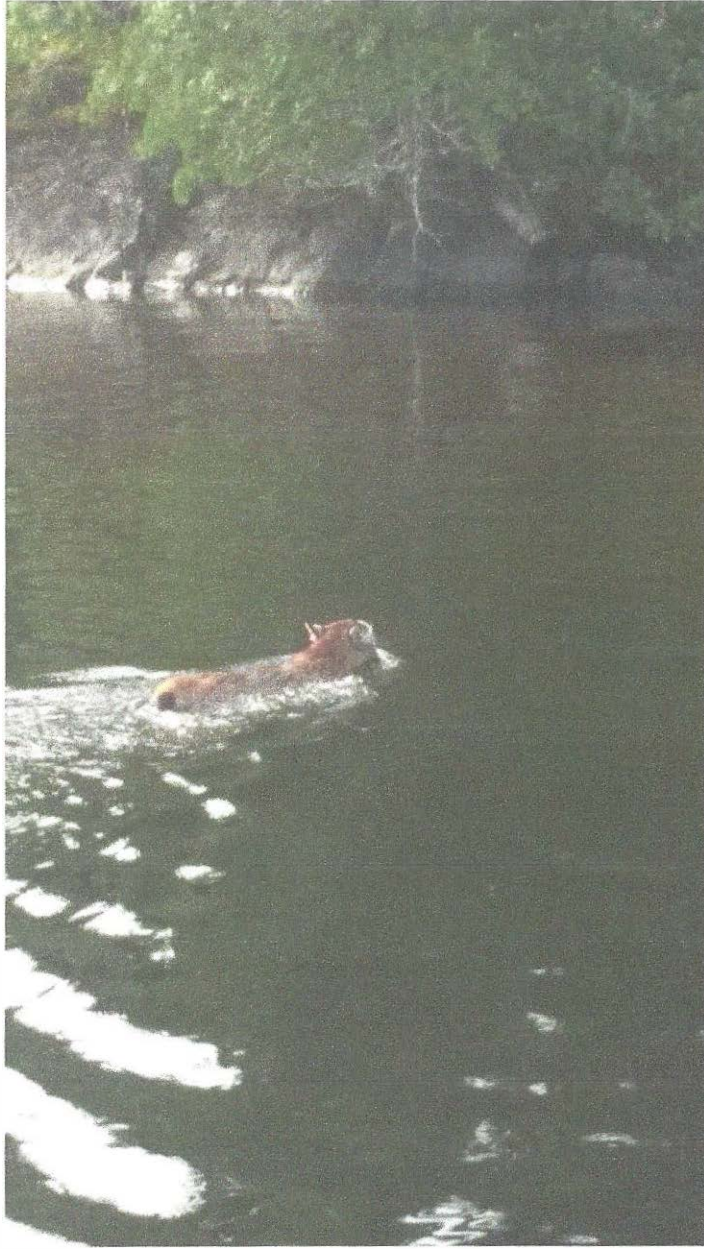


Fig. 3

Sample Descriptions - Claim # 3016741

Sample Number	Sample Description
001	Quartz Vein with Pyrite and Sheard Porphyry
002	Quartz Vein with Pyrite and Sheard Porphyry
003	Rusty Silica with Pyrite
004	Fine Grained Grey Silica and Meta Sediment
005	Rusty Quartz with Sulfides
006	Silicified Pyrite Basalt
007	Silicified Pyrite Basalt
008	Silicified Pyrite Basalt
009	Silicified Pyrite Basalt
010	Silicified Pyrite Basalt
011	Silicified Pyrite Basalt
012	Silicified Pyrite Basalt

Report of Expenses

July 31st- August 3rd 2017

Vehicle Expense

- Travel to Whiskey Jack Lodge to Sturgeon Lake. Round Trip: TOTAL 750 * 0.50km= \$375.00

Accommodations

- Cabin and boat launching fee. Cabin= \$60.00. Launching Fee= \$37.00. TOTAL= \$97.00

Boat/Motor/Trailer Rental

- \$50 per day * 4 days TOTAL = \$200.00

Beepmat rental

- \$90 per day * 4 days TOTAL = \$360.00

Food/Groceries

- \$40 per day * 4 days TOTAL= \$160.00

Gasoline/Oil

- \$40

Prospecting/Stripping (August 1st and August 2nd 2017)

- \$250 per day TOTAL= \$500.00

Misc.

- \$50.00

TOTAL EXPENSES: \$1782.00

Conclusion

It is well documented that high gold values have been obtained from blue/black Quartz veins in contact with fine grey granodiorite feldspar and mafic metavolcanic a quarter mile West on the noted Rainbow Island showings. Prospecting was warranted on this claim as details from the last work that was done using the Beepmat showed veining and alteration. It was determined with agreement Geologist Craig Ravnass that sampling the first pass should be parallel to the original discovered Beepmat vein showing. Stripping and sampling across the vein and flanks resulted in 12 samples WS1 to WS12.

The main observations from the detailed work performed is that the main vein zone is 3 meters wide on average and the outer host rocks needs detailed sampling and mapping. This may help to understand the structural controls on the zones. Detailed prospecting with more sampling on the claim is needed as per agreement with the Kenora district Geologist Craig Ravnass. I believe the full extent of blue/black quartz veining was not discovered, more exploration is needed to fully locate the area of interest. If encouraging results from sampling are returned this could lead to an IP target survey and/or diamond drilling.

Claim #3016741

Method Code:

GFA-PBG

Sample ID	Client ID	QC ID	Ag	Au
Units			oz/ton	oz/ton
Detect Limit			0.1	0.016
17-0251-0001	WJ01		<0.1	<0.016
17-0251-0002	WJ02		<0.1	<0.016
17-0251-0003	WJ03		<0.1	<0.016
17-0251-0004	WJ04		<0.1	<0.016
17-0251-0005	WJ05		<0.1	<0.016
17-0251-0006	WJ06		<0.1	<0.016
17-0251-0007	WJ07		<0.1	<0.016
17-0251-0008	WJ08		<0.1	<0.016
17-0251-0009	WJ09		<0.1	<0.016
17-0251-0010	WJ10		<0.1	<0.016
17-0251-0011	WJ11		<0.1	<0.016
17-0251-0012	WJ12		<0.1	<0.016
Dup-17-44159	WJ04	DUP	<0.1	<0.016
Dup-17-44160	WJ11	DUP	<0.1	<0.016
Dup-17-44162	WJ10	DUP	<0.1	<0.016