

We are committed to providing [accessible customer service](#).
If you need accessible formats or communications supports, please [contact us](#).

Nous tenons à améliorer [l'accessibilité des services à la clientèle](#).
Si vous avez besoin de formats accessibles ou d'aide à la communication, veuillez [nous contacter](#).

2017 assesment work report for 4242907

Brief overview: 4242907 is located in Santoy Lake Area about 15 km north east of Terrace Bay. It is about 4 km north of the highway as the crow flies but it is about 7km following the trail in. The claim surrounds the historic Ursa Major Mine site which consists of at least 3 parallel east west trending quartz veins, each about 50m apart. The southerly vein contains the Main 30 m deep shaft on the Ursa Major vein with a short 3m deep shaft about 5m to the west. The Ursa vein seems to be 2to 3m wide mineralized with PY, CPY and Galena and can be traced for at least 50m with lot of the vein exposed in old trenches. 40 m to the north is the middle vein which is a .5 to 1m wide quartz vein with minor CPY and malachite and can be traced for only around 20m. The middle vein seems to have had the least work done on it. Another 60m to the north is the Lizard Vein which has had the most work done on it as it can be traced for around 160m and is up to 6m wide. There has been a large amount of rock removed from the east end of this vein just 15m from the lake and is a large 10x25m muck pile of larger quartz blocks. The blocks are fist to large brick size and at this end consist of sugary quartz with minor PY and MO. There is a 30m deep 2.5x3m shaft located about 170m west of the lake and the vein is trench or exposed the whole way along. The vein is mineralized with varying amounts of CPY, PY, MO and Galena along the way. The vein is hosted in mafic to mafic schist but should also be noted that at the east end and evident in the muck pile there seems to be Granite wisps or small inclusions in the vein material. This may be important as it has been speculated that there is a contact with the granite or more specifically with the Terrace Bay Batholith below the volcanics of the property.

May 27 2017: Allan Onchulenko and I left Thunder Bay at 530 am and drove the 220km to just this side of Jackfish Lake where the road for the Empress Mine heads north off highway 17. It had been a few years since we were last in here so as soon as we got on the quad path we had to stop and start cutting trees. Apparently there had been some heavy storms as we could never go more than 100m of so before having to get the chainsaws out and cut another tree. By 1230pm we were out of gas and still had only made 2km of the 3km quad trail. Since there is still a 1.5km walk after the end of the trail we started walking here. At Mccraig lake the lake was so high we had to walk most of the lake in bush off the trail. We did not arrive at Lizard Lake and the claim till almost 3 pm. As we only had a few hours or less till we had to start the return trip we decided to concentrate on the main vein where last time we had found an old ribbon with the #63 on it. We knew from studying reports that this was one of the spots where Dainels had got a 16gram AU assay back in 1995. We proceeded to this spot at 16 U 500358 5415542 and spent over an hour digging threw rubble from the trench next to it. The trench exposes a 2 to 3m wide quartz vein that is of sugary texture hosted in mafic volcanics and well mineralized with CPY and minor PY. We retrieved a few nice samples (we have not assayed yet) and I took a few pictures of the area we were digging threw. We then moved up the hill to the Main shaft at 16 U 500339 5415527 took a few pictures of this and the old 6 hp locomotive boiler and the winch. We also examined a short shaft just in behind to the west at 16 U 500328 5415530. This area is rustier and seems to be on a contact between mafic rocks and finer grained more sheared shist. The rock is very mineralized with PY and maybe some PO here. We did not sample this area as the old reports showed

little to no gold numbers here. I am including a picture of this also. At this time we had to start the almost three hour walk/quad ride back out and called it a day. I believe that the remoteness and poor access and ultra rugged terrain is why so little work has been reported over the years.

For May 27th I am claiming \$500 for a full day of work for two people plus 440 travel kms at \$.5 per km=\$220

August 6th 2017

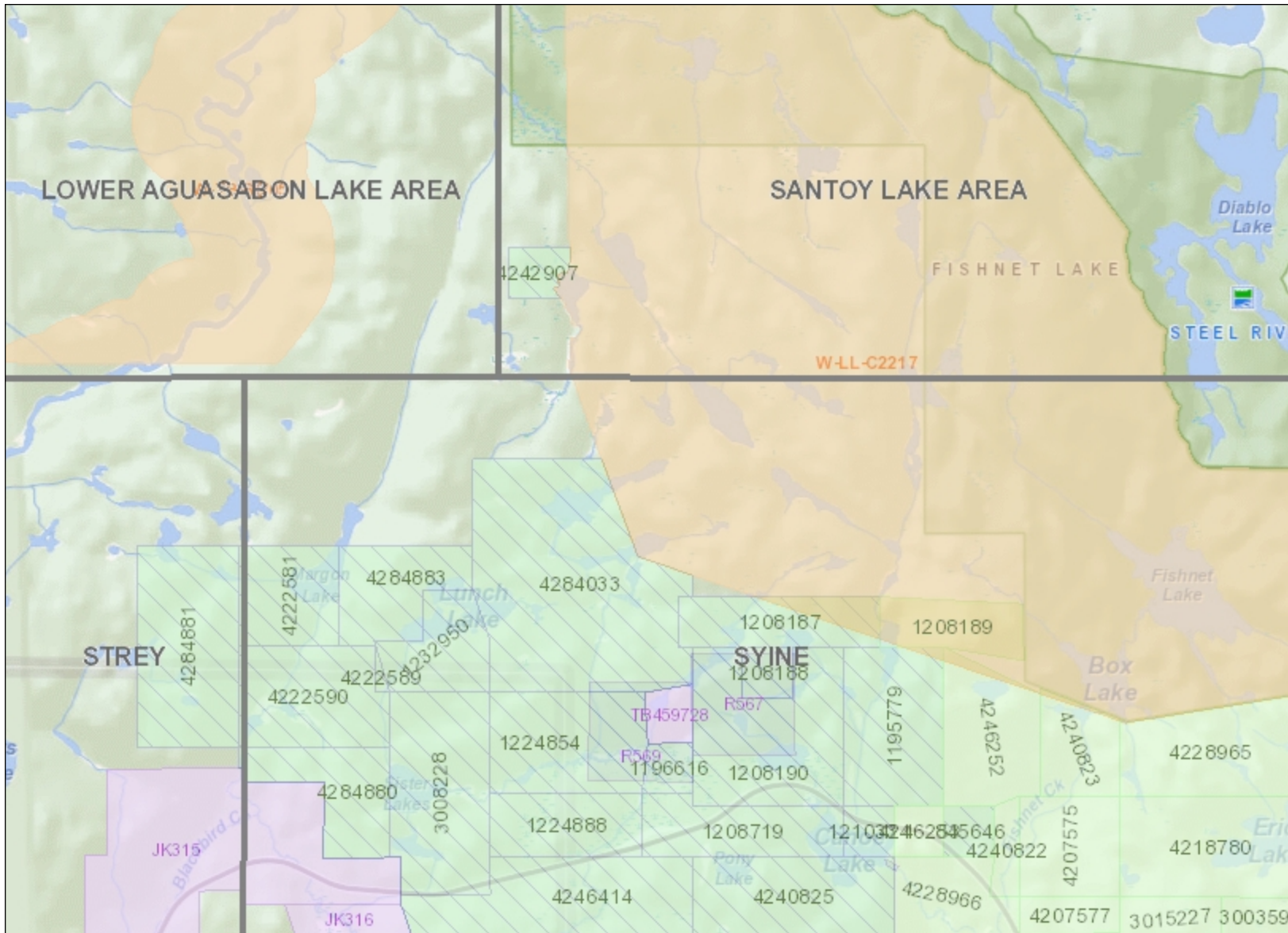
On the 6th of august Allan Onchulenko and I left Thunder Bay at 530 am and drove the 220km to the parking area for the Ursa trail, unloaded quads and started the long trek towards claim 4242907. The main purpose for the day was to identify a landing area for a helicopter for the OGS team mapping in the area. Shamus of the OGS had informed me that there were to be doing helicopter work in the up coming week and if we could identify a landing area he was hoping to do some mapping work at the site as we had talked about this the previous year. It was close to noon by the time we got onto the claim and the first thing we did was to scout out a suitable place for the Ministry to land. We located a perfect spot at 16 U 500489 5415573 and marked it out with a flagging tape. We then spent about an hour examining the muck pile right near the lake here at 16 U 500462 5415582. It is a 10x25m pile of larger quartz blocks very overgrown by full size trees but can easily be picked at at various spots along the edges. The blocks are fist to large brick size and at consist of sugary white quartz with minor PY and MO. We also noted some blocks with wisps of granite colored material and thought that this may an indicator that there is granite underlying the volcanics at some point here. This may be an important feature to note as most gold showings in the area are related to the contact between the volcanic rock and the Terrace Bay Batholith. We then started at the bottom of the Lizard Vein at 16 U 500456 5415621 and worked our way up to the Lizard Shaft at 16 U 500312 5415623 over the next hour or so. All the quartz we examined was white with varying amounts of CPY, PY, MO and some minor galena. WE collected no samples as nothing was really out standing. The bed rock hosting the vein was sheared mafic usually containing PY and possibly PO. We did find an upright boiler that we had never seen before at 16 U 500406 5415602 just 15m south of the Lizard vein .We then did a traverse to the north going almost 180m very near the north line of the claim. We striped or examined a number of spots along the way up here noting mafic rocks that were less sheared as we left the first 10m next to the vein. As we came back to the south we tried to find evidence of the continuation of the Lizard and the Ursa vein but found nothing of interest. We walked back down to the east on the Ursa vein and looked as some of the old mining debris such as the boiler, winch, rail car axels and old rails. This was the end of our time and we started the long trek back out.

For August 6th I am claiming \$500 for a full day or work for two people plus 440 travel kms at \$.5 per km=\$220

So the totals I am claiming Two work days for two people at \$250 per day = \$1000
Plus two return trips of 440km @\$.50 per km = \$440
Plus one day for creating and organizing the report and photos @ \$250

For a grand total of \$1690 to be applied to 4242907

Peter Gehrels



Legend

Administration Boundaries

- Mining Divisions
- Resident Geologist District
- Townships and Areas
- UTM Grid
- Geographic Lot Fabric
- Other Federal Land

Mineral Tenure Grid

- OMTG Tenure Grid

Alienations

- Withdrawal
- Notice

Unpatented Claim

- Active
- Reconciled
- Pending

Disposition

- Disposition

Disposition Symbols

- Camp
- Disposition Unknown/Pending
- Freehold Patent Mining Rights Only
- Freehold Patent Surface Rights Only
- Freehold Patent Surface and Mining Rights
- Land Use Permit
- Leasehold Patent Mining Rights Only
- Leasehold Patent Surface Rights Only
- Leasehold Patent Surface and Mining Rights
- License of Occupation Mining Use Only
- License of Occupation Surface Use Only
- License of Occupation Surface and Mining Rights
- License of Occupation Uses Not Specified
- Order in Council
- Tower
- WPLA

Geology Layers

- AMIS Sites
- AMIS Features
- Drill Holes
- Mineral Occurrences



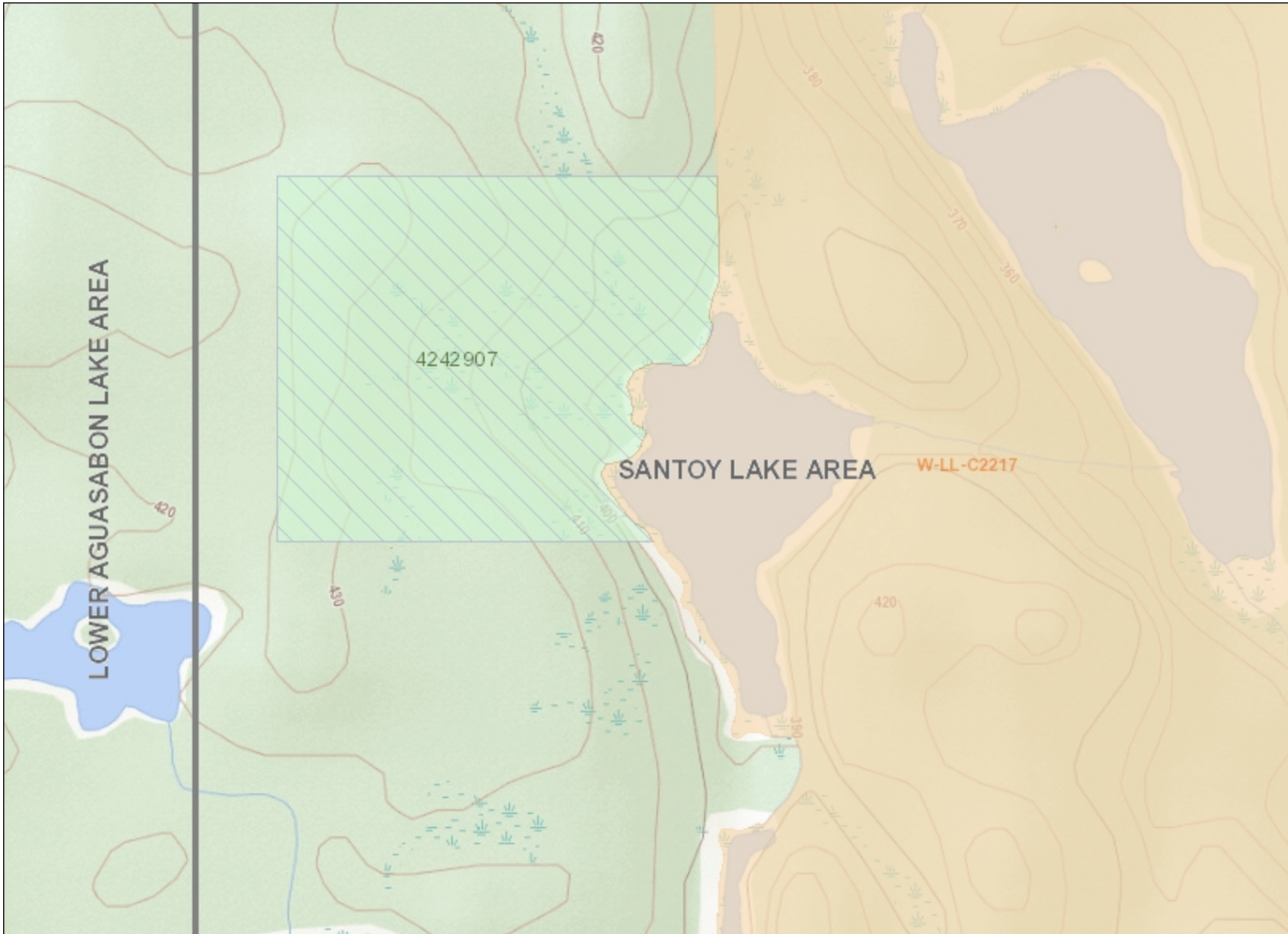
Projection: Web Mercator



The Ontario Ministry of Northern Development and Mines shall not be liable in any way for the use of, or reliance upon, this map or any information on this map. This map should not be used for: navigation, a plan of survey, routes, nor locations.

Imagery Copyright Notices: Ontario Ministry of Natural Resources and Forestry; NASA Landsat Program; First Base Solutions Inc.; Aéro-Photo (1961) Inc.; DigitalGlobe Inc.; U.S. Geological Survey.





Legend

Administration Boundaries

- Mining Divisions
- Resident Geologist District
- Townships and Areas
- UTM Grid
- Geographic Lot Fabric
- Other Federal Land

Mineral Tenure Grid

- OM TG Tenure Grid

Alienations

- Withdrawal
- Notice

Unpatented Claim

- Active
- Reconciled
- Pending

Disposition

- Disposition

Disposition Symbols

- Camp
- Disposition Unknown/Pending
- Freehold Patent Mining Rights Only
- Freehold Patent Surface Rights Only
- Freehold Patent Surface and Mining Rights
- Land Use Permit
- Leasehold Patent Mining Rights Only
- Leasehold Patent Surface Rights Only
- Leasehold Patent Surface and Mining Rights
- License of Occupation Mining Use Only
- License of Occupation Surface Use Only
- License of Occupation Surface and Mining Rights
- License of Occupation Uses Not Specified
- Order in Council
- Tower
- WPLA

Geology Layers

- AMIS Sites
- AMIS Features
- Drill Holes
- Mineral Occurrences



Projection: Web Mercator



The Ontario Ministry of Northern Development and Mines shall not be liable in any way for the use of, or reliance upon, this map or any information on this map. This map should not be used for: navigation, a plan of survey, routes, nor locations.

Imagery Copyright Notices: Ontario Ministry of Natural Resources and Forestry; NASA Landsat Program; First Base Solutions Inc.; Aéro-Photo (1961) Inc.; DigitalGlobe Inc.; U.S. Geological Survey.



4242907.

august 6th 2017

Legend

Ontario Geological Survey

LIZARDSHAFT
4242907

BOTTOMLIZARD

BOILER

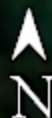
MUCKPILE

LZ1

Google Earth

Image © 2017 CNES / Airbus

100 m



4242907.

august 6th 2017

Legend

Ontario Geological Survey

BOTTOM LIZARD
JIZARD SHAFT
BOILER
MUCKPILE

Google Earth

Image © 2017 CNES / Airbus

400 m



4242907.

may 27th 2017 traverse
blue line is tracks from this day

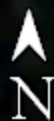
Legend

Ontario Geological Survey

SHORTSHAFT SHFT1

Google Earth

Image © 2017 CNES / Airbus



100 m

4242907.

may 27th 2017 traverse
blue line is tracks from this day

Legend

01.4242907#1post
02.4242907#4post
03.4242907#3post
04.4242907#2post

SHORTSHAFT

Ontario Geological Survey

Google Earth

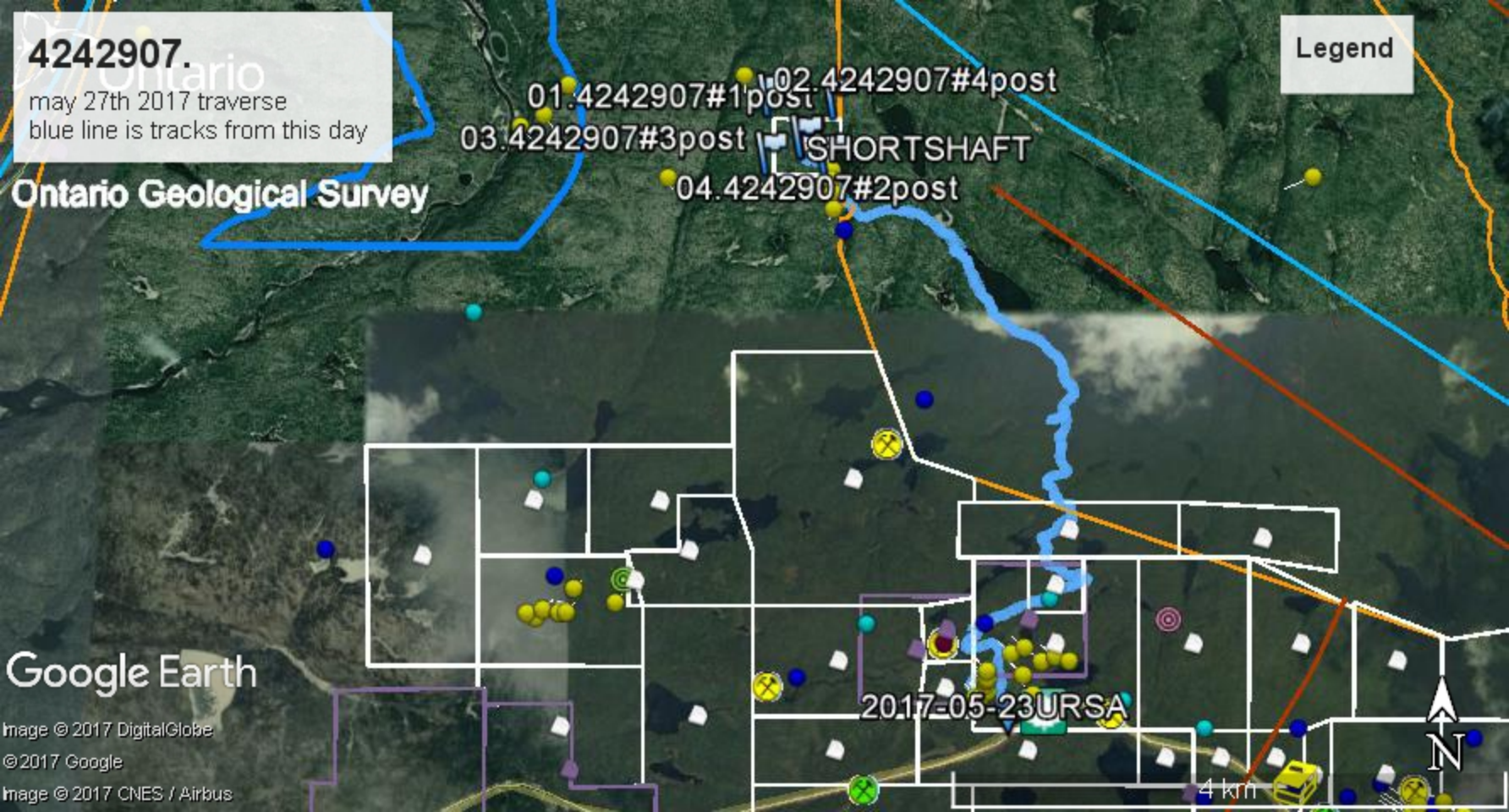
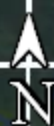
Image © 2017 DigitalGlobe

© 2017 Google

Image © 2017 CNES / Airbus

2017-05-23URSA

4 km



4242907.

august 6th 2017

Legend

Ontario Geological Survey

LIZARDSHAFT
4242907

BOTTOMLIZARD

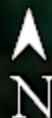
BOILER

MUCKPILE

LZ1

Google Earth

Image © 2017 CNES / Airbus



100 m

4242907.

august 6th 2017

Legend

Ontario Geological Survey

BOTTOM LIZARD
JIZARD SHAFT
BOILER
MUCKPILE

Google Earth

Image © 2017 CNES / Airbus

400 m



4242907.

august 6th 2017

Ontario Geological Survey

BOTTOM LIZARD
BOILER MUCKPILE
LLZ1

Legend



1



DIKE

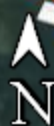
Google Earth

Image © 2017 DigitalGlobe

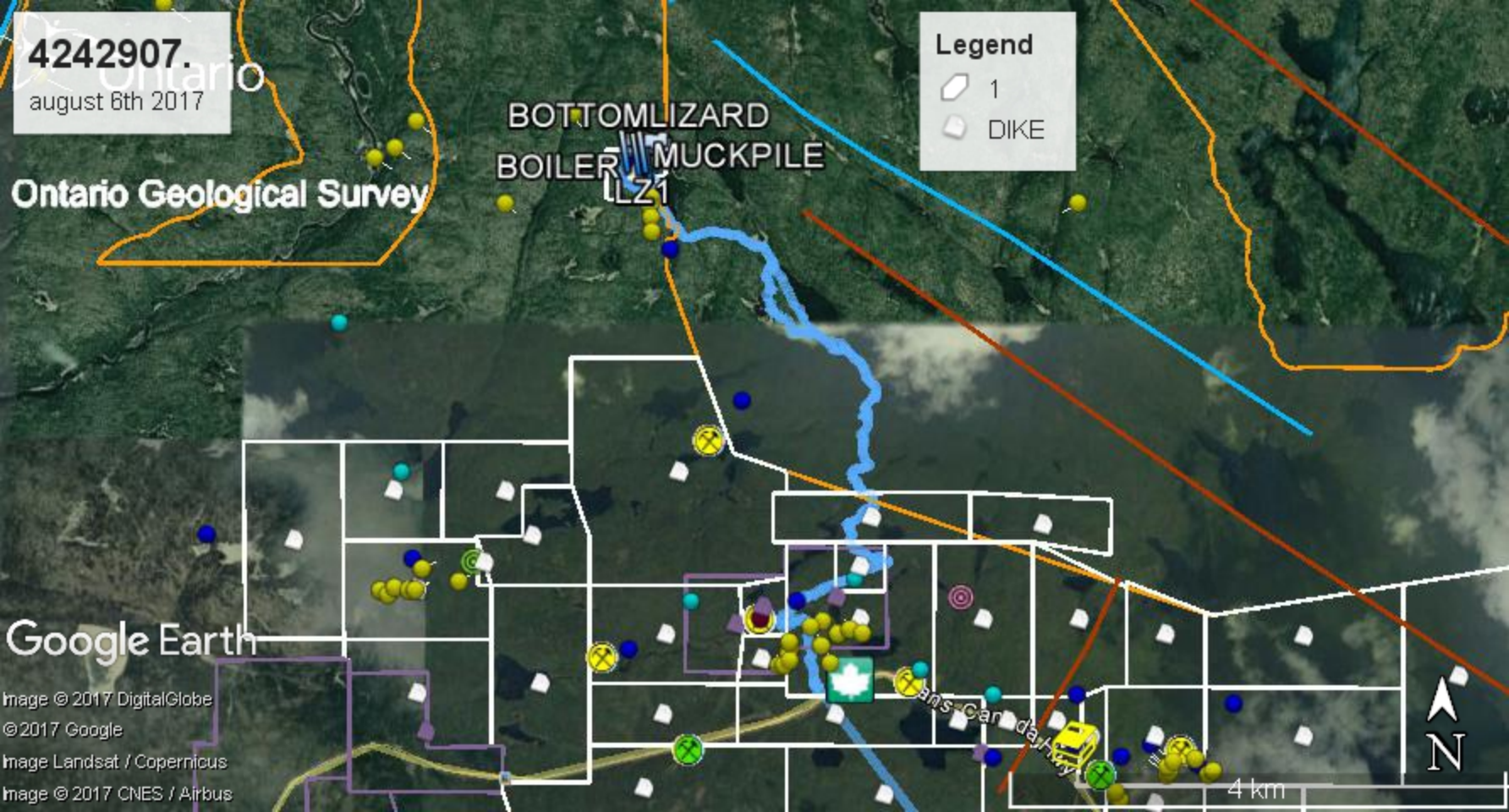
© 2017 Google

Image Landsat / Copernicus

Image © 2017 CNES / Airbus



4 km





2013/01/01



2013/01/01



2013/01/01



2013/01/01



2013/01/01



2013/01/01