

We are committed to providing [accessible customer service](#).
If you need accessible formats or communications supports, please [contact us](#).

Nous tenons à améliorer [l'accessibilité des services à la clientèle](#).
Si vous avez besoin de formats accessibles ou d'aide à la communication, veuillez [nous contacter](#).

ASALO

PROSPECTING, SAMPLING, ASSAYING REPORT
LOCATION CLAIM L-1200023, MCGARRY TWP,
2-58282 DUPLICATE

THIS PROPERTY CONSISTS OF ONLY
1 CLAIM, 2 CLAIM UNITS, UNPATENTED
IN MCGARRY TWP, LARDER LAKE MINING
DIVISION, IN THE ABITIBI SUB-PROVINCE
OF THE SUPERIOR PROVINCE OF THE
PRECAMBRIAN SHIELD, THE NTS IS 32³/₄,
LAT 48°10' + LONGITUDE 79°35'. THIS
PROPERTY IS LOCATED 5 KM NORTH
OF VIRGINIATOWN, 5 KM WEST OF THE
ONTARIO-QUEBEC BORDER, IN THE
NORTH WEST PART OF MCGARRY TWP.
A LOCATION MAP & MAPS ARE ENCLOSED

PROVINCIAL RECORDING
OFFICE - SUDBURY
RECEIVED
OCT 30 2017
P.M.
A.M.

ACCESS

ACCESS IS FROM THE MAIN HIGHWAY
66, EAST OF KEARNS, NORTH ON THE CHEMINS
ROAD FOR 2.5 KM TO THE RAILWAY TRACKS
(UNCONTROLLED CROSSING), WEST AT THE FIRST
MAIN FORK TO THE WEST FOR 3 KM, PAST
THE SOUTH MILL FORK, TO A JUNCTION
NORTH FOR 1.5 KM AND THEN WEST OVER
THE SWAMP ON THE TRAIL WEST TO THE
CLAIM. THERE IS NO MAINTENANCE ON
THIS ROAD FROM THE CHEMINS CROSSING
JUNCTION. AN ATV OR 4X4 IS RECOMMENDED
AS THIS IS BEAR COUNTRY PERSONAL
PROTECTION IS ADVISED, AN ACCESS
MAP IS ENCLOSED. ACCESS FROM ALL
OTHER DIRECTIONS BUT UNLESS YOU
KNOW WHERE YOU ARE GOING IT IS
NOT ADVISED.

REGIONAL GEOLOGY

THE VOLCANIC AND SEDIMENTARY ROCK GROUP OF THE SOUTH ABITIBI GREENSTONE BELT ARE PRESERVED IN A LARGE SYNCLORUM BETWEEN LAKE ABITIBI, ROUND LAKE AND WATABAEG BATHOLITHS AND BASEMENT ROCKS OF THE BELLCOMBE BELT. THE VOLCANIC AND SEDIMENTARY SUCCESSIONS CONSIST OF SEVERAL ASSEMBLAGES COMPRISING KOMATIITIC, THOLEIITIC, CALC-ALKALIC, AND ALKALIC VOLCANIC AND SEDIMENTARY ROCKS, TWO MAJOR DEFORMATIC ZONES, THE DESTOR-PORCUPINE AND CADILLAC-LARDE LAKE FAULT (SHEAR) ZONES TRANSECT THESE ASSEMBLAGES AND ARE MAJOR DISCONTINUITIES (FAULT CONTACTS), SEPARATING ASSEMBLAGES, EXCEPT FOR PROXIMAL CONTACT DEFORMATION AND ALTERATION THE CADILLAC-LARDE LAKE SHEAR ZONE IS CONFINED TO THE TIMISKAMING ASSEMBLAGE AND SEPARATE THE CATHERINE, BOSTON, LARDE LAKE, M^CELROY, SKEAD AND HEARST ASSEMBLAGES TO THE SOUTH FROM THE KINOJEVIS AND BLAKE RIVER ASSEMBLAGE TO THE NORTH. GEOLOGICAL MAPPING BY J.E. THOMSON (1941) SHOWED THE NORTH HALF OF M^CGARRY TOWNSHIP AS BEING UNDERLAIN BY KEEWATIN BASIC VOLCANICS AND TEMISKAMING TRACHYTES AND SEDIMENTS. MORE RECENT MAPPING BY L.S. JENSEN HAS SUBDIVIDED THE KEEWATIN BASIC VOLCANIC UNITS INTO TWO GROUPS, THE BLAKE RIVER AND THE KINOJEVIS, THE KINOJEVIS GROUP CONSISTS OF

E. REGIONAL GEOLOGY (CONTINUED)

3

MASSIVE AND PILLOWED METABASALTS WHICH CAN BE FURTHER DIVIDED INTO MAGNESIUM AND IRON THOLEIITIC BASALTS. THE MAGNESIUM BASALS ARE NON-MAGNETIC AND THE IRON THOLEIITIC BASALS ARE MAGNETIC. THE BLAKE RIVER GROUP CONSIST OF ACIDIC AND CALC-ALKALIC ^{ROCKS} MOSTLY. THE TEMI AMING ASSEMBLAGE IS PREDOMINANTLY SEDIMENTARY. HOWEVER A NUMBER OF VOLCANIC FORMATIONS ARE INTERBANDED (INTERCALATED) WITH THE SEDIMENTS WHICH INDICATES INTERMITTENT VOLCANISM AND SEDIMENTATION PREVAILED DURING THE DEPOSITION OF THE VOLCANICS AS OPPOSED TO MUCH UNINTERRUPTED VOLCANISM IN RESPECT OF THE KINOJEVIS VOLCANICS.

PROPERTY GEOLOGY

IT IS THE BLAKE RIVER ASSEMBLAGE IN CONTACT WITH THE KINOJEVIS BASALTS (ANDESITES) WHICH IS OF MAJOR IMPORTANCE IN THE PROPERTY AREA. THE SAME ASSEMBLAGE HOSTS MANY BASE METAL DEPOSITS IN THE NORANDA CAMP BUT NONE YET ON THE ONTARIO SIDE. THE PROPERTY AREA STRADDLES THE KINOJEVIS - BLAKE RIVER CONTACT, SPECIFICALLY AN ANDESITE - RHYOLITE CONTACT. A GABBRO - DIORITE DYKE, PERHAPS SYN VOLCANIC, TRENDS WEST + EAST AND IS INTIMATE WITH THE (SPOTTED-DOG - CUNNINGHAM) MASSIVE SULPHIDE (DALMATIONITE ALTERATION) SHOWING TO THE WEST. DIAMONDS AND DIAMOND INDICATOR MINERAL HAVE BEEN FOUND IN THE TILL 1670

(4)

WORK DONE

PROSPECTING & SAMPLING WAS DONE ON THIS CLAIM AS INDICATED AND 4 SAMPLES WERE ASSAYED

RESULTS

NO ECONOMIC GOLD RESULTS BUT INDICATIONS OF PLENTY GOLD IN THE AREA

CONCLUSIONS

WE CAN ONLY PROSPECT SAMPLE AND ASSAY UNTIL WE CAN GET MONEY TO DRILL.

RECOMMENDATIONS

CONTINUE TO PROSPECT UNTIL WE CAN GET DRILLING MONEY.

2017-10-18

Respectfully Submitted

Prospector

PROSPECTING, SAMPLING
& ASSAYING REPORT


A. SALO

CLAIM - L-1200023

MCGARRY TWP

DAILY LOG

~~WORK~~ DONE

DATE	WORK DONE
2017-06-17	PROSPECTING, SAMPLING,
2017-06-18	" " "
2017-10-15	REPORT PREPARATION
2017-10-16	" " + FINISH
2017-10-21	

PROSPECTING, SAMPLING +
ASSAYING REPORT

ASALO

CL-L-1200023

MCGARRY TWP

SAMPLE DESCRIPTION

SAMPLE NUMBER	DESCRIPTION
①	ANDRESITE, FINE PYRITE
②	
③	
④	

ASALO

2017-10-7

Quality Analysis ...



Innovative Technologies

Date Submitted: 10-Jul-17
Invoice No.: A17-06944
Invoice Date: 18-Jul-17
Your Reference:

Arvo Salo
Box 276 Virginia Town Ontario
Canada

ATTN: Arvo Salo

CERTIFICATE OF ANALYSIS

4 Rock samples were submitted for analysis.

The following analytical package(s) were requested:

Code 1A2-Timmins Au - Fire Assay AA

REPORT **A17-06944**

This report may be reproduced without our consent. If only selected portions of the report are reproduced, permission must be obtained. If no instructions were given at time of sample submittal regarding excess material, it will be discarded within 90 days of this report. Our liability is limited solely to the analytical cost of these analyses. Test results are representative only of material submitted for analysis.

Notes:

If value exceeds upper limit we recommend reassay by fire assay gravimetric-Code 1A3.

CERTIFIED BY:

A handwritten signature in black ink, appearing to be "Elitsa Hrischeva". The signature is written in a cursive, flowing style.

Elitsa Hrischeva, Ph.D.
Quality Control

ACTIVATION LABORATORIES LTD.
1752 Riverside Drive, Timmins, Ontario, Canada, P4R 1N1
TELEPHONE +705 264-0123 or +1.888.228.5227 FAX +1.905.648.9613
E-MAIL Timmins@actlabs.com ACTLABS GROUP WEBSITE www.actlabs.com

Analyte Symbol	Au
Unit Symbol	ppb
Lower Limit	5
Method Code	FA-AA
1	6
2	6
3	7
4	6

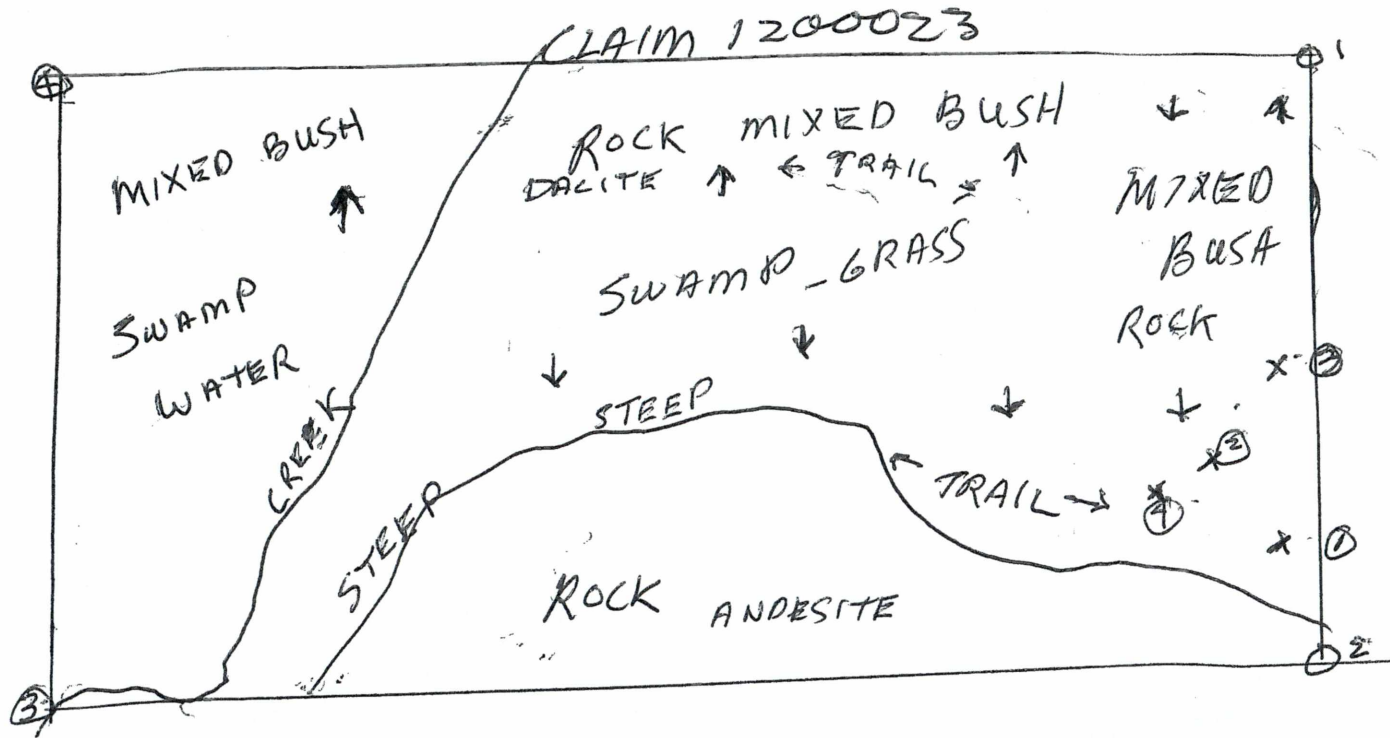
Analyte Symbol	Au
Unit Symbol	ppb
Lower Limit	5
Method Code	FA-AA
OREAS 203 Meas	854
OREAS 203 Cert	871
OREAS 218 Meas	509
OREAS 218 Cert	525
Method Blank	5
Method Blank	< 5

PROSPECTING, SAMPLING AND ASSAYING REPORT

X ⊕ SAMPLE LOCATION
↑ TRAVERSE DIRECTION

CLAIM - E - 1200023

MCGARRY TWP

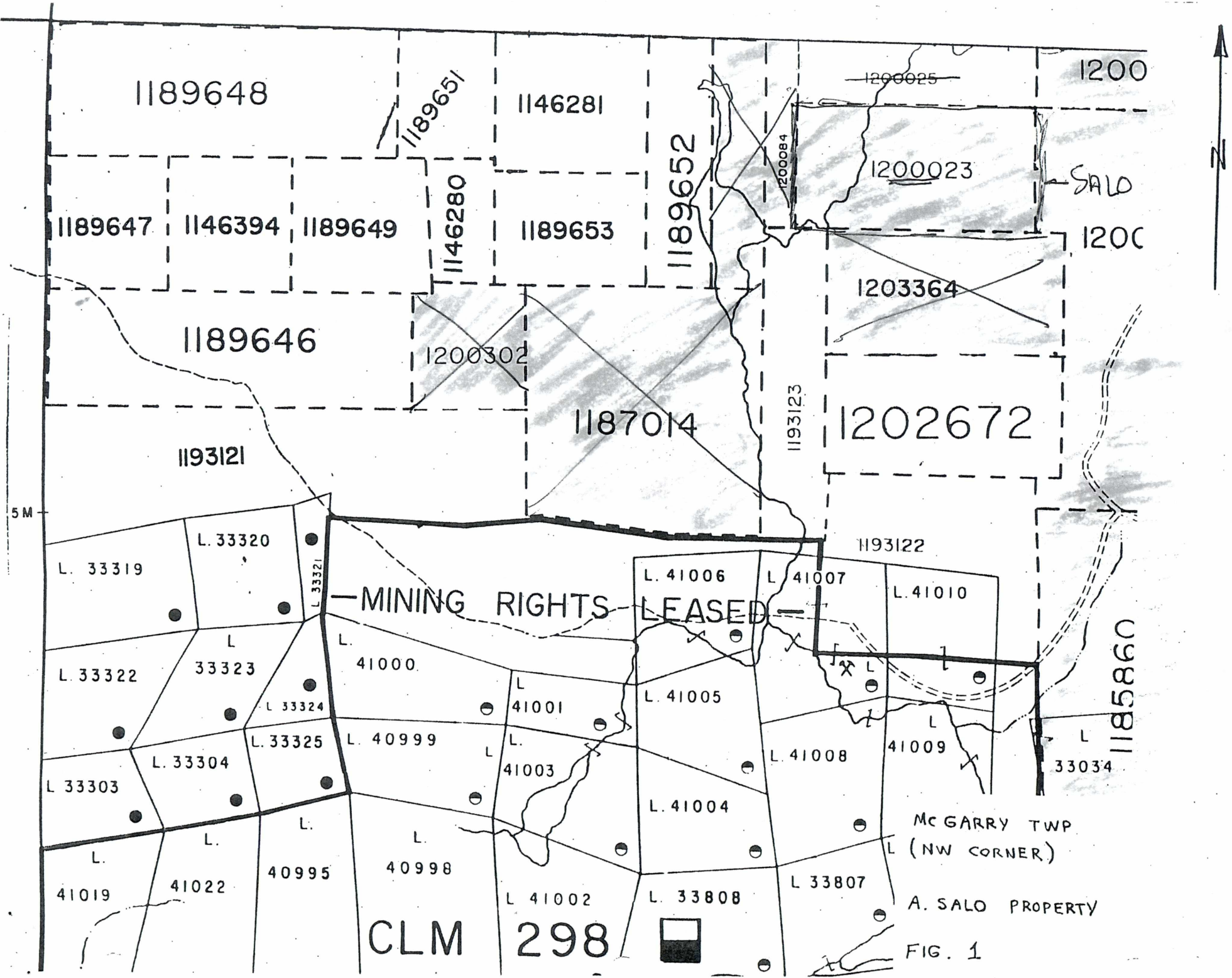


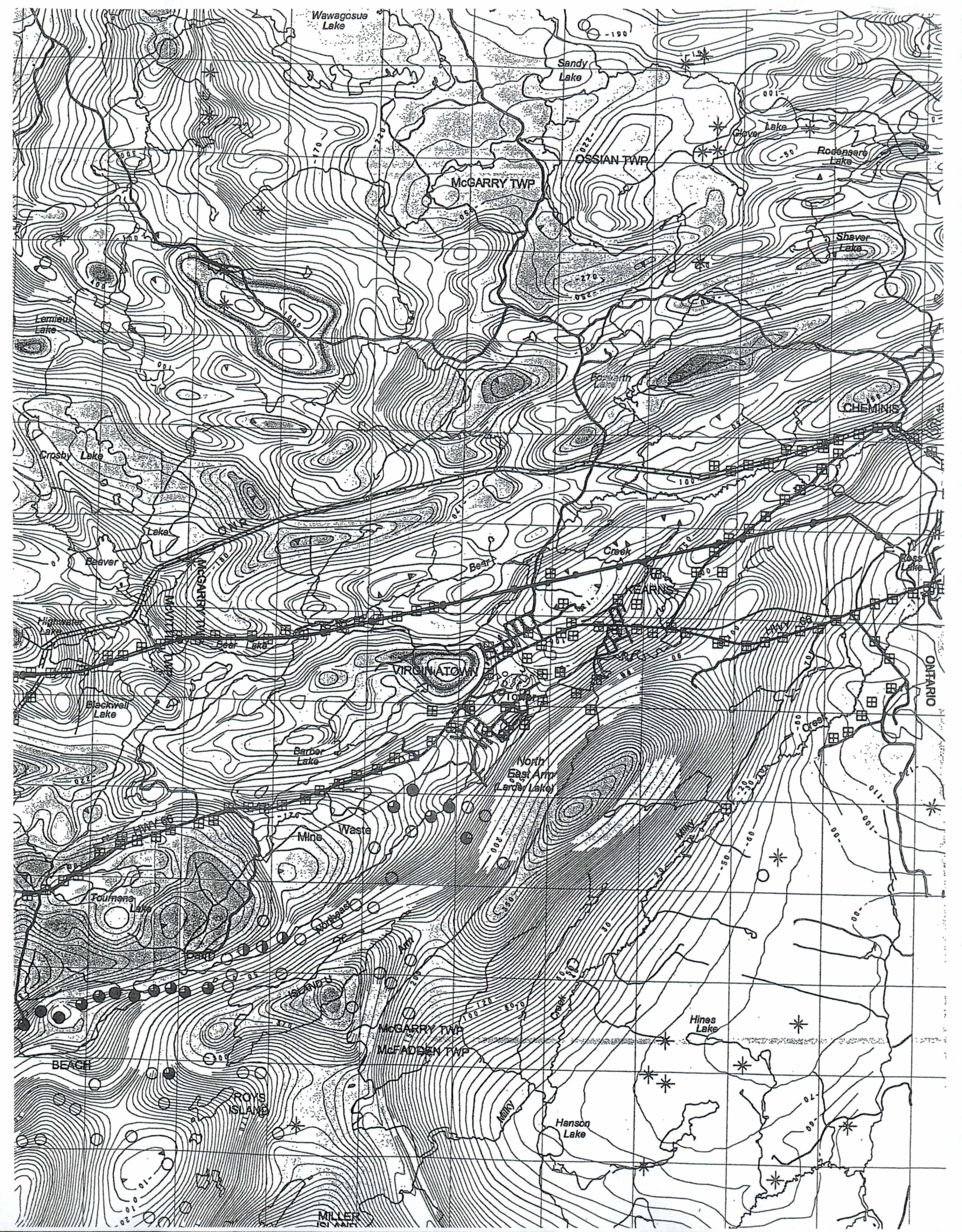
SCALE - 1 - 2500

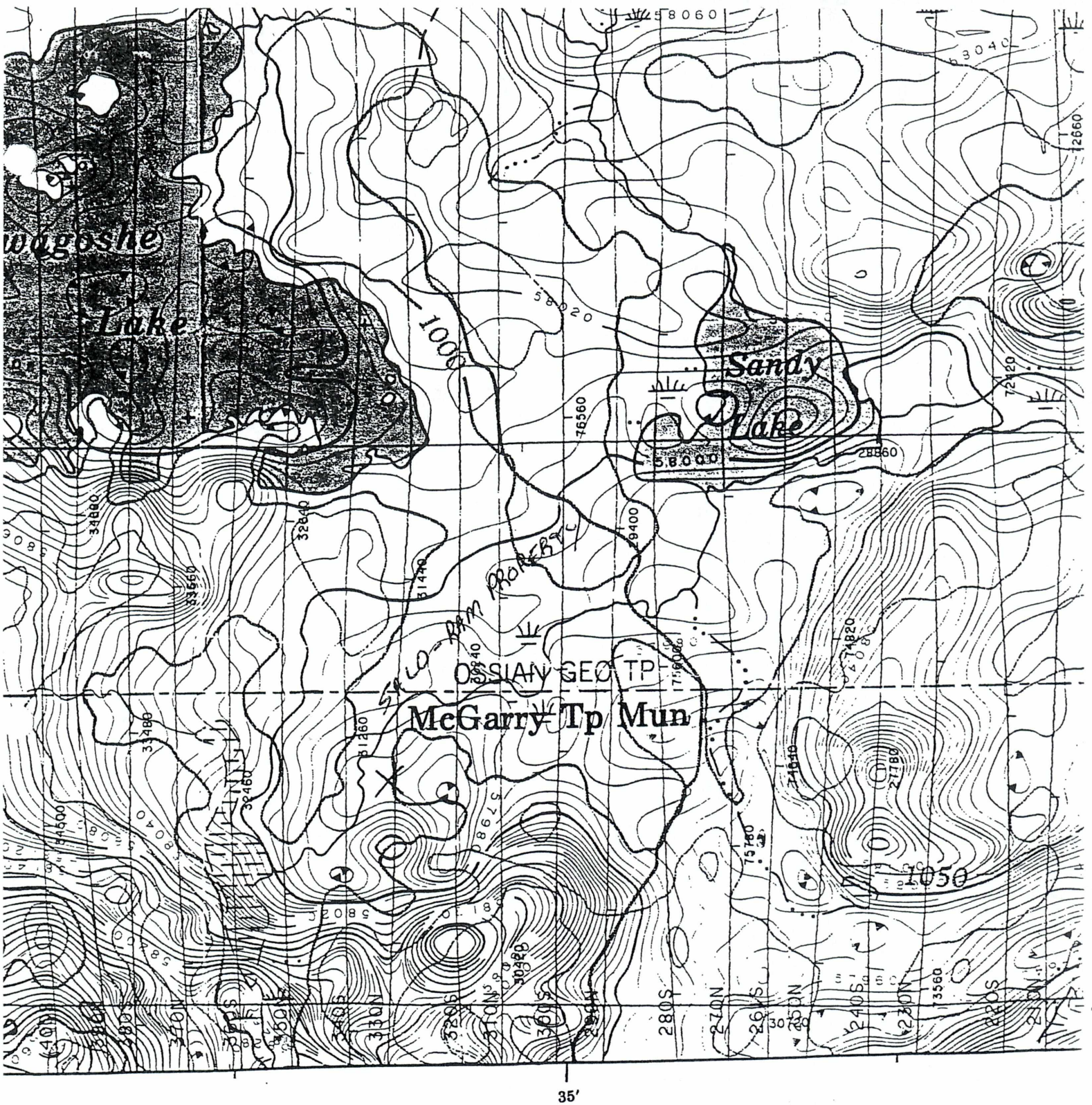
25 0 25 50 75

2017-10-16

[Signature]
Prospector







MAP 20378G CARTE

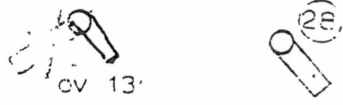
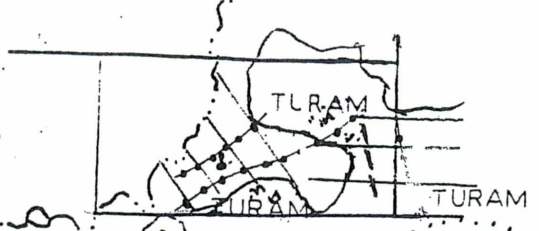
2.22110

MAGNETIC TOTAL FIELD MAP DUPLICATE COPY
MAGNÉTIQUE DU CHAMP TOTAL

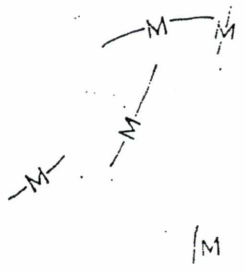
BLAKE RIVER SYNCLINE

ONTARIO

EM
VEM



cv 13'
TD 1007'
11b, 2a,
qcv, qv, cp, py



avg cv 49'
avg TD 535'
11b, 4, 5, 7
taic, qcv, cp, p
Fe

Foxearth L.

30-A

30-A

30-A

DUPLICATE COPY

(cv)
11b
11c
11d
11e
11f
11g
11h
11i
11j
11k
11l
11m
11n
11o
11p
11q
11r
11s
11t
11u
11v
11w
11x
11y
11z

11b, 11c
11d, 11e
11f, 11g
11h, 11i
11j, 11k
11l, 11m
11n, 11o
11p, 11q
11r, 11s
11t, 11u
11v, 11w
11x, 11y
11z

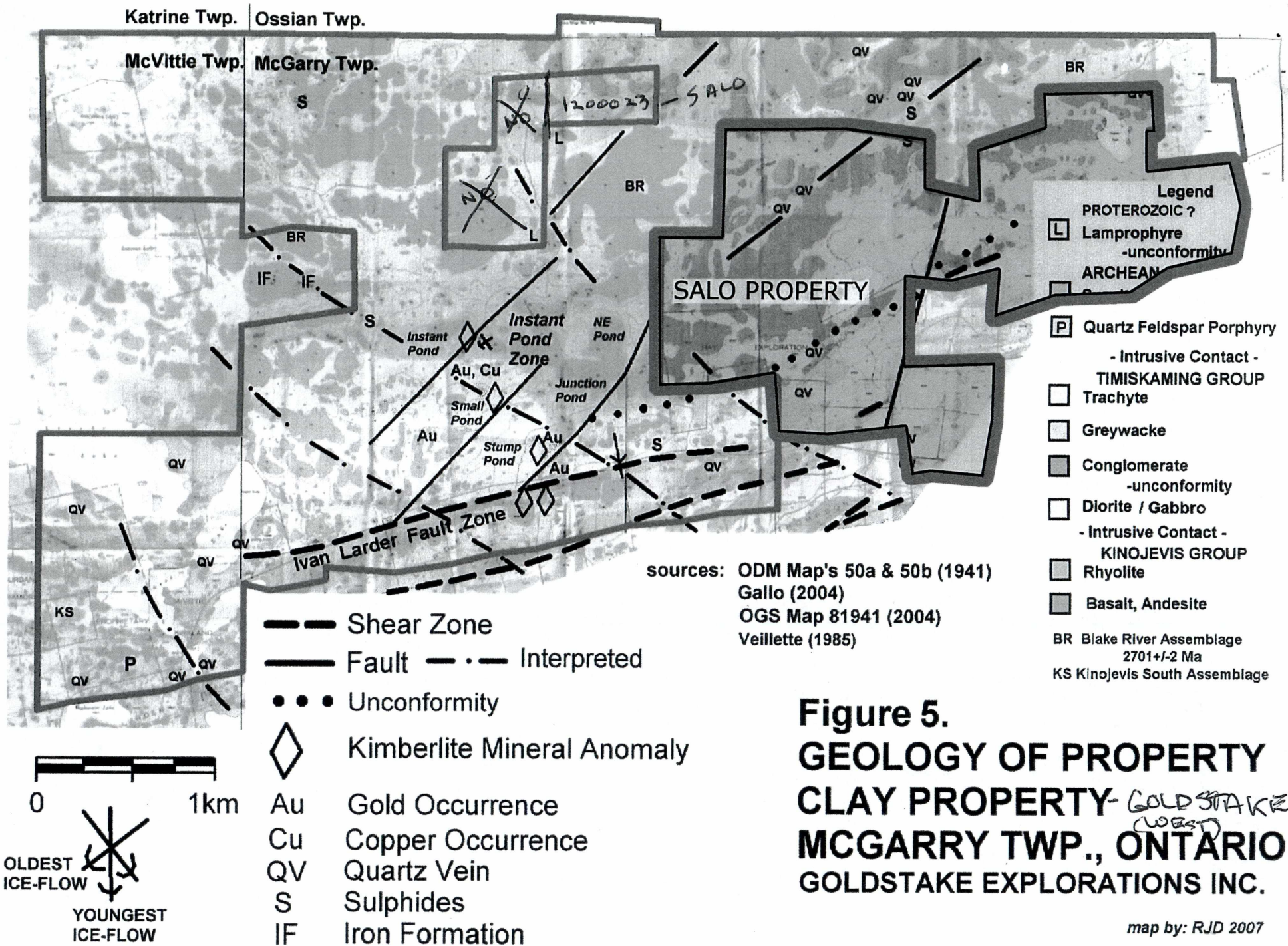


Figure 5.
GEOLOGY OF PROPERTY
CLAY PROPERTY - GOLDSTAKE
MCGARRY TWP., ONTARIO
GOLDSTAKE EXPLORATIONS INC.

map by: RJD 2007

TOPOGRAPHIC

- Administrative Boundaries
- Township
- Conservation Land
- National Park
- Indian Reserve
- C/O, P/A & Fire
- Contour
- Line Walls
- Abuse Infrastructure
- Railway
- Road
- Trail
- Natural Gas Pipeline
- URR/AAs
- Tie

Land Tenure

Federal Patent

- Surface And Mining Rights
- Surface Rights Only
- Mining Rights Only

Leasehold Patent

- Surface And Mining Rights
- Surface Rights Only
- Mining Rights Only

License of Occupation

- Users Not Specified
- Surface And Mining Rights
- Surface Rights Only
- Mining Rights Only
- Land Use Permit
- Order to Close (Not open for Mining)
- Waiver For Lease Appearance
- Mining Claim
- Not Only Mining Claims

LAND TENURE WITHDRAWALS

- Area Withdrawn From Disposition
- Mining Claim Withdrawal Types
- Surface Rights Withdrawal Types
- Mining Rights Withdrawal Types
- Order to Close Withdrawal Types
- Surface Rights Only Withdrawal Types
- Land Use Only Withdrawal Types

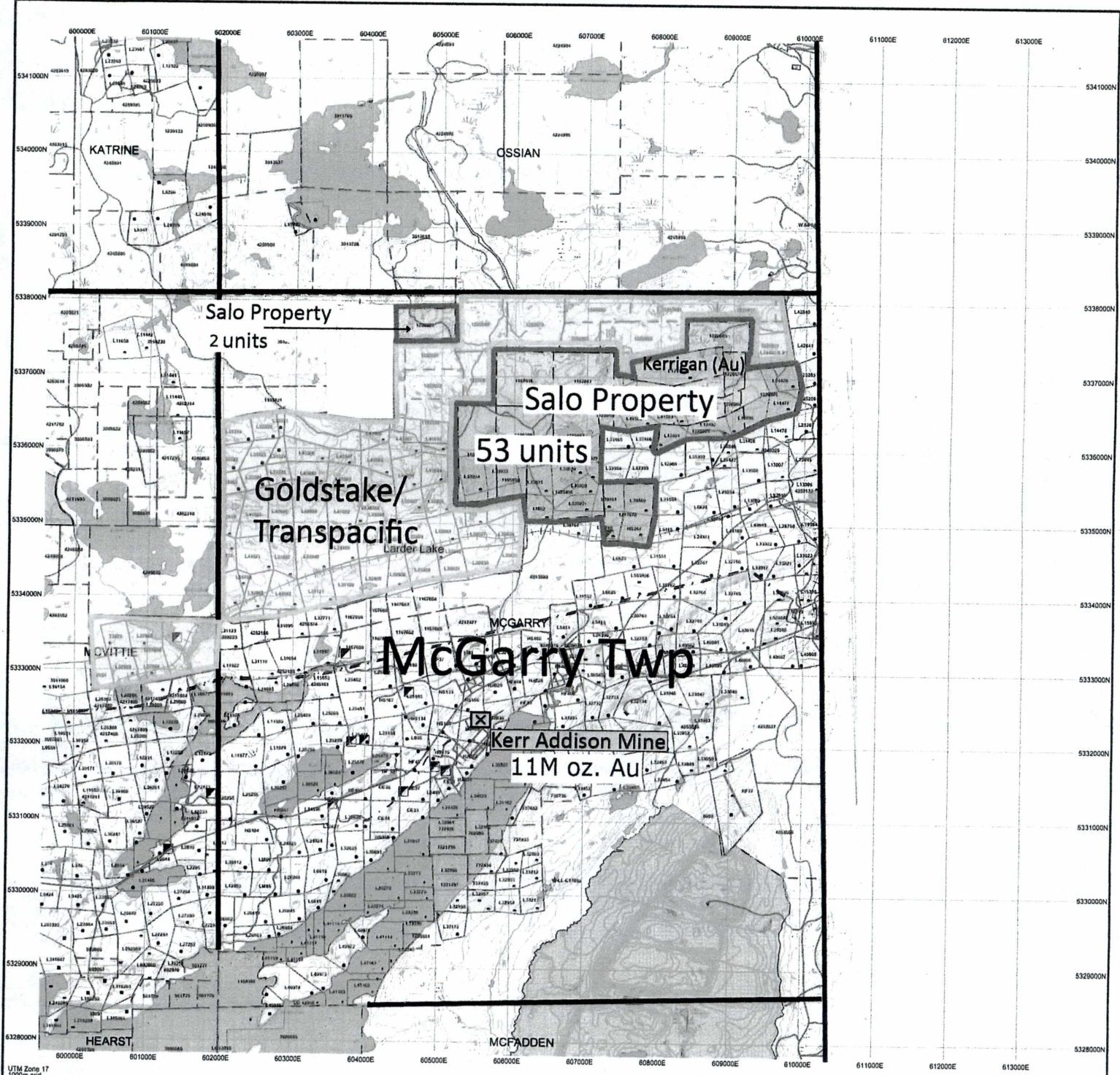
IMPORTANT NOTICES

Scale 1:20000

700m 2.3km

LAND TENURE WITHDRAWAL DESCRIPTIONS

Number	Type	Date	Description
3772	W/SA	Jan 1, 2001	MINING RIGHTS PRESERVED THROUGH THE COURSE OF ALL LAND SURFACE RIGHTS FROM STATUS SECTION 18 AND ORDER 100 183
3782	W/SA	Jan 1, 2001	MINING RIGHTS PRESERVED THROUGH THE COURSE OF ALL LAND SURFACE RIGHTS FROM STATUS SECTION 18 AND ORDER 100 183
3853	W/SA	Jan 1, 1999	MINING RIGHTS PRESERVED THROUGH THE COURSE OF ALL LAND SURFACE RIGHTS FROM STATUS SECTION 18 AND ORDER 100 183
WLL-17875	W/SA	Feb 1, 2000	ORDER TO CLOSE - SURFACE RIGHTS PRESERVED THROUGH THE COURSE OF ALL LAND SURFACE RIGHTS FROM STATUS SECTION 18 AND ORDER 100 183
WLL-C1824	W/SA	May 25, 2000	ORDER TO CLOSE - SURFACE RIGHTS PRESERVED THROUGH THE COURSE OF ALL LAND SURFACE RIGHTS FROM STATUS SECTION 18 AND ORDER 100 183
WLL-C1204	W/SA	May 25, 2000	ORDER TO CLOSE - SURFACE RIGHTS PRESERVED THROUGH THE COURSE OF ALL LAND SURFACE RIGHTS FROM STATUS SECTION 18 AND ORDER 100 183
WLL-C1787	W/SA	Feb 12, 2002	ORDER TO CLOSE - SURFACE RIGHTS PRESERVED THROUGH THE COURSE OF ALL LAND SURFACE RIGHTS FROM STATUS SECTION 18 AND ORDER 100 183
WLL-P1532	W/SA	Feb 12, 2002	ORDER TO CLOSE - SURFACE RIGHTS PRESERVED THROUGH THE COURSE OF ALL LAND SURFACE RIGHTS FROM STATUS SECTION 18 AND ORDER 100 183
W1-6383	W/SA	Jan 1, 2001	MINING RIGHTS PRESERVED THROUGH THE COURSE OF ALL LAND SURFACE RIGHTS FROM STATUS SECTION 18 AND ORDER 100 183
W1-6374	W/SA	Jan 1, 2001	MINING RIGHTS PRESERVED THROUGH THE COURSE OF ALL LAND SURFACE RIGHTS FROM STATUS SECTION 18 AND ORDER 100 183
W0274	W/SA	Jan 1, 2001	MINING RIGHTS PRESERVED THROUGH THE COURSE OF ALL LAND SURFACE RIGHTS FROM STATUS SECTION 18 AND ORDER 100 183



SALO PROPERTIES

SALO PROPERTIES I-IV

DUPLICATE

PROVINCIAL RECORDING
OFFICE - SUBURBY
RECEIVED
OCT 30 2017

I-IV

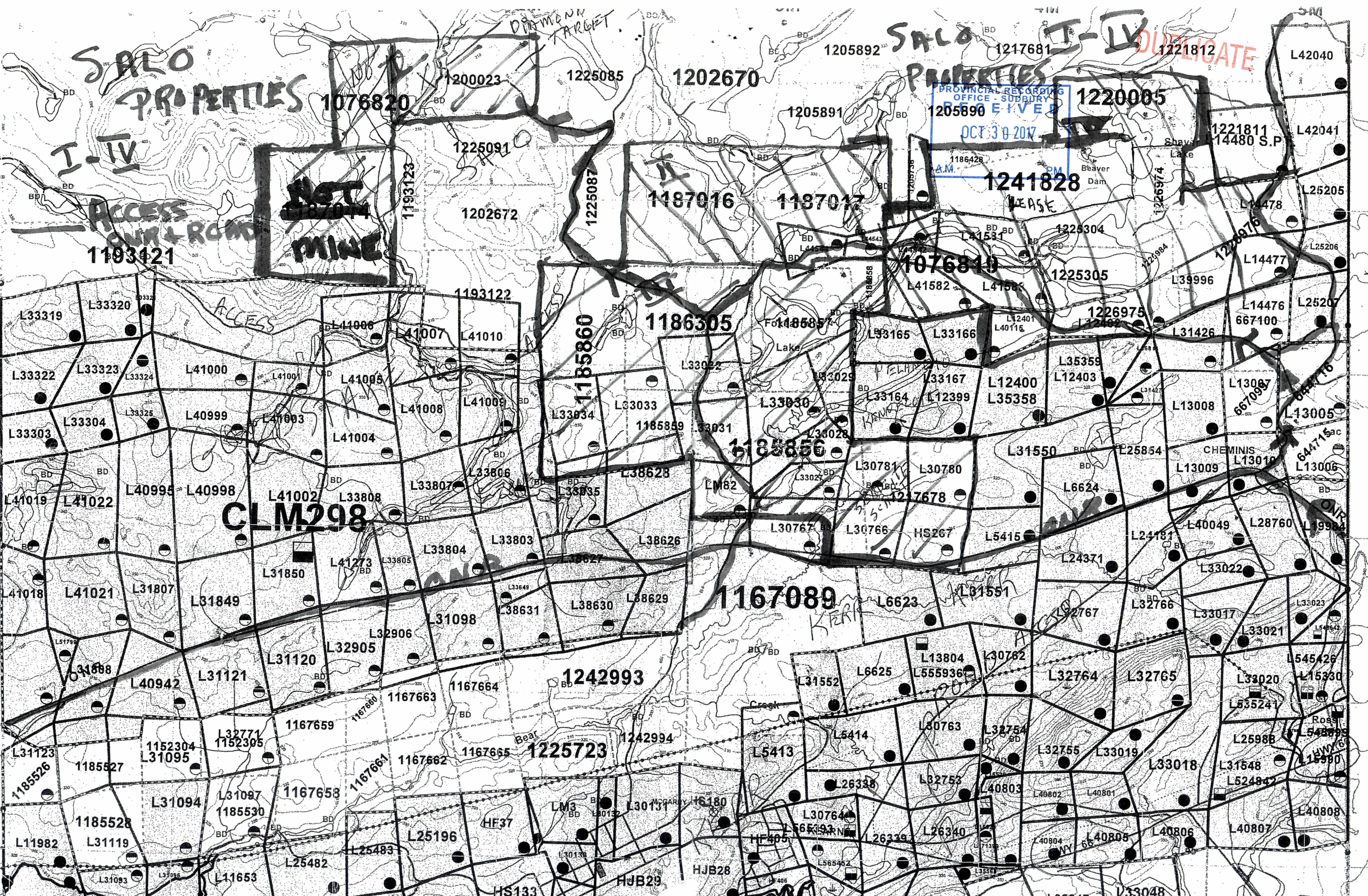
ACT MINE

ACCESS

1193421

ACCESS

CLM298



A. SALO

News release via Canada NewsWire, Toronto 416-863-9350

Attention Business Editors:
Goldstake: Nine gold zones indicated on
Larder Lake Property in Northern Ontario

Trading Symbol: GXP
(Toronto Stock Exchange)
Canada

TORONTO, Sept. 2 /CNW/ - Eight gold zones and one copper/gold zone have been indicated on the Larder Lake mining property in north-eastern Ontario in which Goldstake Explorations Inc. (GXP:TSX) has an option to acquire up to a 60% interest.

This property, located in the world-class Kirkland Lake gold camp in northern Ontario, encompasses more than 4,000 acres in two areas and is situated one mile north of the old Kerr Addison Mine, which produced over 11 million ounces of gold.

Exploration on the Larder Lake project is well advanced. Four separate drilling programs, involving 5,012m of diamond drilling and total expenditures of \$4.5 million, have been conducted, the last program ending in 1997.

GOLD

Drilling to date has been shallow and confined to a vertical depth of 260m. Of the 43 drill holes completed in the four drilling programs, the majority of drillholes have hit gold.

In comparison, the Kerr Addison mine had one hole in six intersect mineralization in the initial exploration phases.

Eight gold zones and one copper/gold zone have been indicated. Results on the "F" zone indicate a geologic resource of 130,000 tons grading 3.2 grams per ton of gold (pre-NI 43-101), including 11.5 g/t Au over 1.2m, 4.0g/t Au over 2.4m and 210,000 tons grading 2.5 grams per ton (pre-NI 43-101) for the Instant Creek and South gold zones. Reducing this tonnage to higher grade material results in 68,000 tons grading 6.8 grams per ton (pre-NI 43-101).

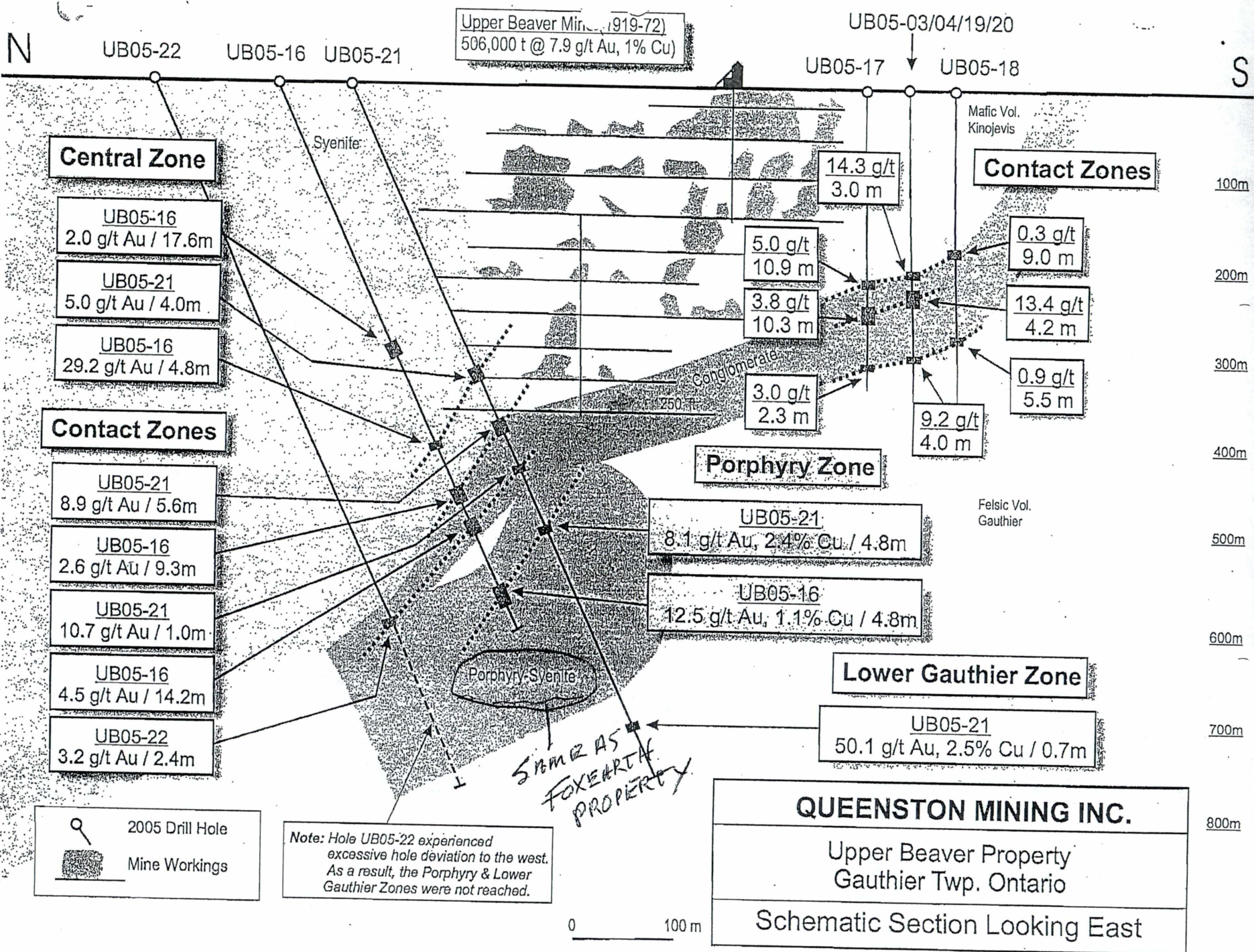
Significant assays from other zones within the 1980's and 1990's drilling included: 19 g/t over 1.1m, 17.7 g/t over 0.6m, 11.5 g/t over 0.6m, 9.3 g/t over 1.67m, 9.3 g/t over 1.2m, 6.8 g/t over 1.2m and 4.35 g/t over 1.2m. The highest grade encountered to date is 438 g/t (14.08 oz) Au over .44 cm and the greatest width is 8.85m (1.42 g/t Au); these are approximately 60m and 75m respectively from surface.

Carbonate alteration and silicification accompany the gold mineralization, and zones of green carbonate up to 34.8m wide (core length), some carrying visible gold, have been discovered.

However, drilling so far has been limited to shallow depths, and it is believed that the property has excellent potential to host several hundred thousand ounces of gold, as gold deposits in Precambrian shield typically exist to 1,500m (the deepest mine in the Kirkland Lake gold camp is 2,400m) with the grade generally increasing with depth.

Two of the eight gold zones were drilled in the late 1990s and remain open along strike and down dip. They may be displaced by the NE trending splay fault. Additional drilling must be conducted to determine the strike and dip extensions of these two zones, to probe the other six known gold zones, and to explore for additional mineralization.

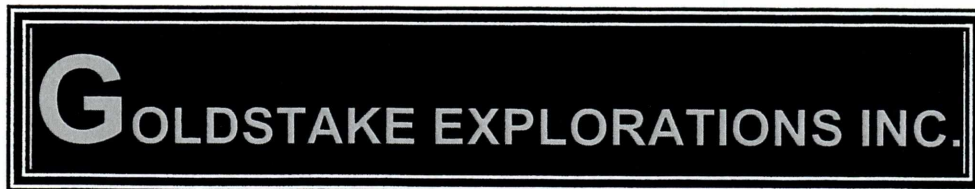
The property, which is easily accessible by road and close to all necessary infrastructure for operating a mine, lies in a setting of Temiskaming-type sediments in fault contact with Precambrian volcanics, a recognized gold-producing environment throughout the world. The fault on the property is a splay off the main Kirkland-Cadillac Break and traverses the property by 4.8 km.



N.T.S. 32D/SW

**REPORT ON HEAVY MINERAL SAMPLING
AND
RECOMMENDATIONS FOR DIAMOND EXPLORATION
McGARRY PROPERTY, McGARRY TWP.
ONTARIO, CANADA
National Instrument (N.I.) 43-101F1 Technical Format
Larder Lake Mining Division
Ontario, Canada**

FOR



**2150 WINSTON PARK DRIVE
OAKVILLE, ONTARIO CANADA L6H 5R7**

**REPORT BY: ROBERT J. DILLMAN P.GEO, B.Sc.
Arjadee Prospecting
8901 Reily Drive
Mount Brydges, Ontario Canada
N0L1W0**

March 30, 2007

N.T.S. 32D/SW

**REPORT ON
DIAMOND DRILL PROGRAM
INSTANT POND ZONE**

CLAY PROPERTY

**McGARRY, McVITTIE & OSSIAN TOWNSHIP'S,
ONTARIO, CANADA**

FOR

GOLDSTAKE EXPLORATIONS INC.

**2150 WINSTON PARK DRIVE
OAKVILLE, ONTARIO CANADA L6H 5R7**

**REPORT BY: ROBERT J. DILLMAN P.GEO, B.Sc.
Arjadee Prospecting
8901 Reily Drive
Mount Brydges, Ontario Canada
N0L1W0**

July 24, 2008

FINAL REPORT

2009 DIAMOND DRILLING PROGRAM AT THE
INSTANT POND SOUTH ZONE,
CLAY PROPERTY,
M_cGARRY, M_cVITTIE & OSSIAN TOWNSHIP'S,
ONTARIO, CANADA.

For

GOLDSTAKE EXPLORATIONS INC.
2150 WINSTON PARK DRIVE
OAKVILLE, ONTARIO CANADA L6H 5R7

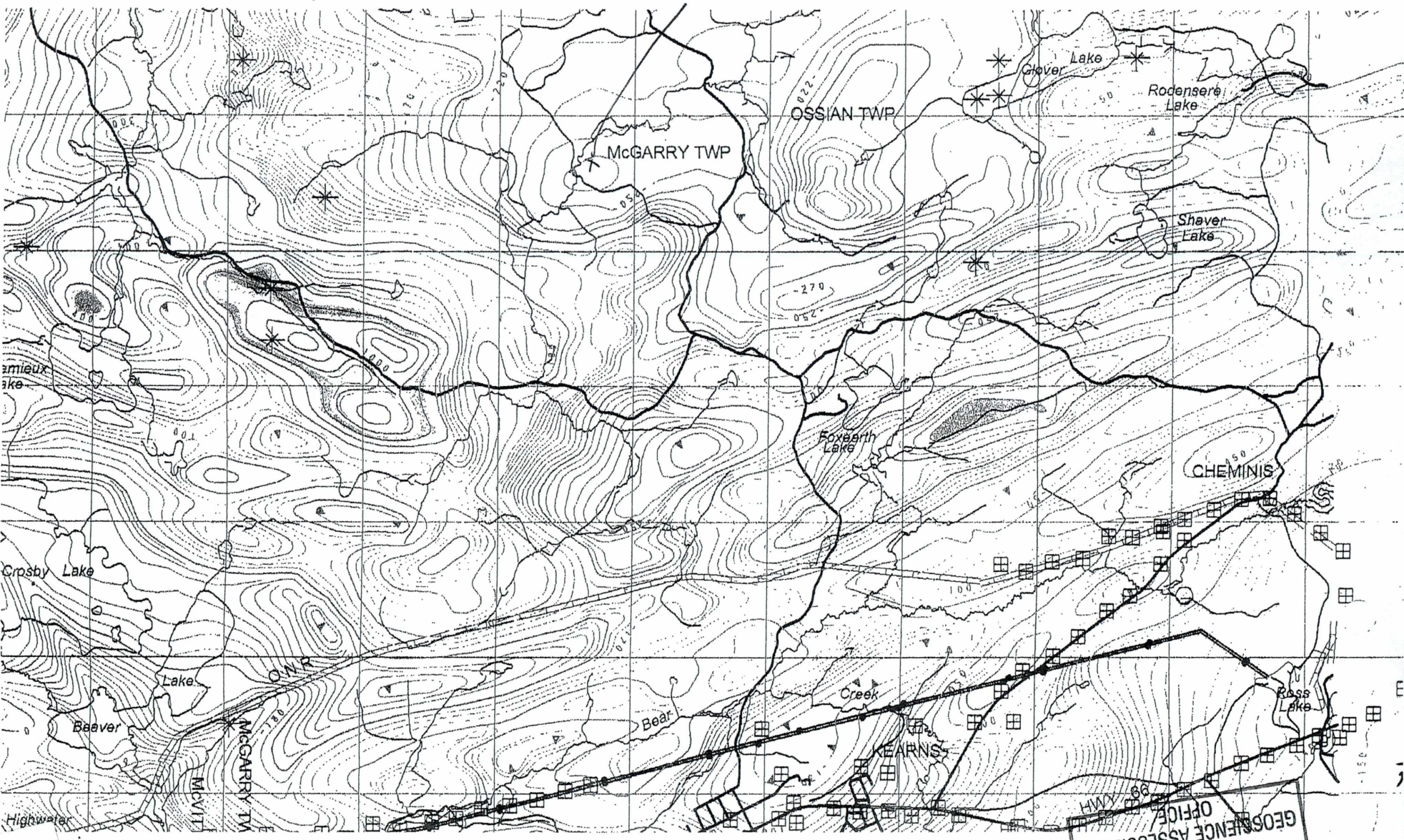
Report compiled and written by

Alan L. Watchman PhD
13 Los Alamos Canyon
Glorieta, NM 87535

January 29, 2010

ACCESS
SALO

A. SALO



2.45

RECEIVED
JUL 14 2010
GEOLOGICAL ASSESSMENT
OFFICE

TIED ON WEST

It's 3:25 pm

NEWS FROM CNW GROUP

**Goldstake hits 31.47 ounces per ton Au over 0.6 ft.
Extending to 0.95 ounces per ton Au over 28.7 ft.**

09:39 EDT THURSDAY, APRIL 21, 2005

TORONTO, April 21 /CNW/ - Goldstake Explorations Inc. - TSX Symbol: GXP - is pleased to report on its recent diamond drill program on the "McGarry", Virginiatown, Ontario, Canada project, which is owned by Transpacific Resources Inc. Goldstake has the option to earn 75% of the property by spending \$2.5 million before December 31, 2009. The 1600 ha. property is located 1 mile north of the Kerr-Addison Mine (one of Canada's biggest gold mines-approx. 11 million ounces produced).

Significant assay results include:

South Zone

Hole No. 11 - 1078.97 gpt. Au over 0.19m. or 31.47 opt. Au over 0.6 ft. extending to 33.29 gpt. Au over 8.76 m. or 0.97 opt. Au over 28.7 ft. (from 93.92m. to 102.68m.)

Hole No. 10 - 127.02 gpt. Au over 0.79m. or 3.70 opt. Au over 2.6 ft. extending to 29.14 gpt. Au over 3.48m. or 0.85 opt. Au over 11.4 ft. (from 121.52m. to 125.00m.)

Hole No. 9 - 212.52 gpt. Au over 0.39m. or 6.2 opt. Au over 1.3 ft. extending to 28.66 gpt. Au over 3m. or 0.84 opt. Au over 9.8 ft. (from 80.00m. to 83.00m.)

Instant Pond (parallel to, and 170m. north of South Zone)

Hole No. 4 - 26.32 gpt. Au over 0.36m. or 0.76 opt. Au over 1.2 ft. (from 158.37m. to 158.73m.)

Hole No. 2 - 65.72 gpt. Au over 0.25m. or 1.92 opt. Au over 0.8 ft. extending to 9.9 gpt. Au over 1.69m. or 0.29 opt. Au over 5.5 ft. (from 65.63m. to 67.32m.)

The primary purpose of this diamond drilling program was to obtain additional information on the strike and dip extensions of the two structurally controlled gold mineralized zones.

Nine of the 11 holes were drilled into two gold zones. The drill-core samples were logged and split. One of the split halves was submitted for gold analysis by atomic absorption spectrometry and/or by fire assay technique to Swastika Laboratories, an accredited commercial laboratory, and the corresponding other half was retained and stored on the Kerr Addison Mine property in Virginiatown.

The true width of these intersections are yet to be determined. One hole was drilled into each of two circular magnetic anomalies

situated up-ice from diamonds, diamond-indicator minerals and kimberlite recovered in basal till