

We are committed to providing [accessible customer service](#).  
If you need accessible formats or communications supports, please [contact us](#).

Nous tenons à améliorer [l'accessibilité des services à la clientèle](#).  
Si vous avez besoin de formats accessibles ou d'aide à la communication, veuillez [nous contacter](#).

**ASSESSMENT REPORT**

**2016 WORK PROGRAM  
RECUTTING CLAIM LINES**

**GRABOWSKI PROPERTY**

**SHARPE TOWNSHIP**

**LARDER LAKE MINING DIVISION**

Submitted by:

Gary Grabowski

September 2017

## Property Description and Access

The property consists of four single-unit claims in Sharpe Township (Figure 1), Larder Lake Mining Division. An application to lease the claims has been submitted.

L1152912	SE ¼ S ½	Lot 11	Con 3	1990
L1203480	NW ¼ S ½	Lot 10	Con 3	1994
L1203481	NE ¼ S ½	Lot 11	Con 3	1994
L1203487	SW ¼ S ½	Lot 10	Con 3	2003

The claims are located about 30 km southwest of Kirkland Lake and about 20 km northwest of Charlton. A logging road leading east from the South EMU road, which connects highways 66 and 560, can reach them.

## Regional Geology

The Sharpe Township property lies near the centre of the Round Lake Batholith, an Archean age (2.685 Ga) intrusive into the southern portion of the Abitibi Greenstone belt. This area of the batholith is within the Indian Chute Stock, a granodiorite-tonalite with quartz monzonite affinities consisting of a homogenous red to mottled white rock with a weak east-west trending foliation, accentuated by oriented xenoliths which average 5% of the rock (P.J. Lafleur, 1986, unpublished MSc thesis, University of Ottawa).

In 2005, the large, diamondiferous Lapointe kimberlite pipe, located in the northeast corner of Sharpe Township, was discovered by Tres-Or Resources Inc. (Figure 1). Also, an Open File Report by the Ontario Geological Survey in 2005 (OFR 6170), reported the recovery of a diamond from a lamprophyre dike cutting the Round Lake Batholith in Chamberlain, 15 km east of the property.

## Property Geology

Outcrops encountered on the property consists of granitic rocks containing mainly feldspar, quartz, biotite and hornblende. Mafic xenoliths up to 5 cm were encountered. Matachewan Diabase dikes, trending more-or-less 180<sup>0</sup>, were observed cutting the granite on the eastern part of claim L4202093. Jointing and fractures in the rocks generally trend 070<sup>0</sup>, roughly parallel to a creek-filled lineament at the north end of the claim group. This lineament can be traced for about 2 km to the east to the northwest-trending Cross Lake Fault. Diamonds have been found in kimberlite pipes and lamprophyre dikes related to this structure.

## **Exploration History**

Previous work on the claims consisted of power stripping, trenching, prospecting and sampling.

## **Work Program**

The claim lines had become grown over and needed to be re-established. The lines were last cut out in 2010.

Three men spent two days re-establishing the claim lines using a chain saw and brush cutters. A total of about 4,500 metres of claim lines were recut. Some areas had little growth while others were more heavily grown in with alders. A wet, swampy area in the northeast corner of the claim group was not able to be cut. This area was flagged.

The work crew consisted of Gary Grabowski, Wayne Grabowski and Don Grabowski. The work was done on October 20 and 21, 2016.

Respectfully submitted

Gary Grabowski  
September 5, 2017



## Legend

- Administration Boundaries**
  - Mining Divisions
  - Resident Geologist District
  - Townships and Areas
  - UTM Grid
  - Geographic Lot Fabric
  - Other Federal Land
- Mineral Tenure Grid**
  - OMTG Tenure Grid
- Alienations**
  - Withdrawal
  - Notice
- Unpatented Claim**
  - Active
  - Reconciled
  - Pending
- Disposition**
  - Disposition
- Disposition Symbols**
  - Camp
  - Disposition Unknown/Pending
  - Freehold Patent Mining Rights Only
  - Freehold Patent Surface Rights Only
  - Freehold Patent Surface and Mining Rights
  - Land Use Permit
  - Leasehold Patent Mining Rights Only
  - Leasehold Patent Surface Rights Only
  - Leasehold Patent Surface and Mining Rights
  - License of Occupation Mining Use Only
  - License of Occupation Surface Use Only
  - License of Occupation Surface and Mining Rights
  - License of Occupation Uses Not Specified
  - Order in Council
  - Tower
  - WPLA
- Geology Layers**
  - AMIS Sites
  - AMIS Features
  - Drill Holes
  - Mineral Occurrences



Projection: Web Mercator



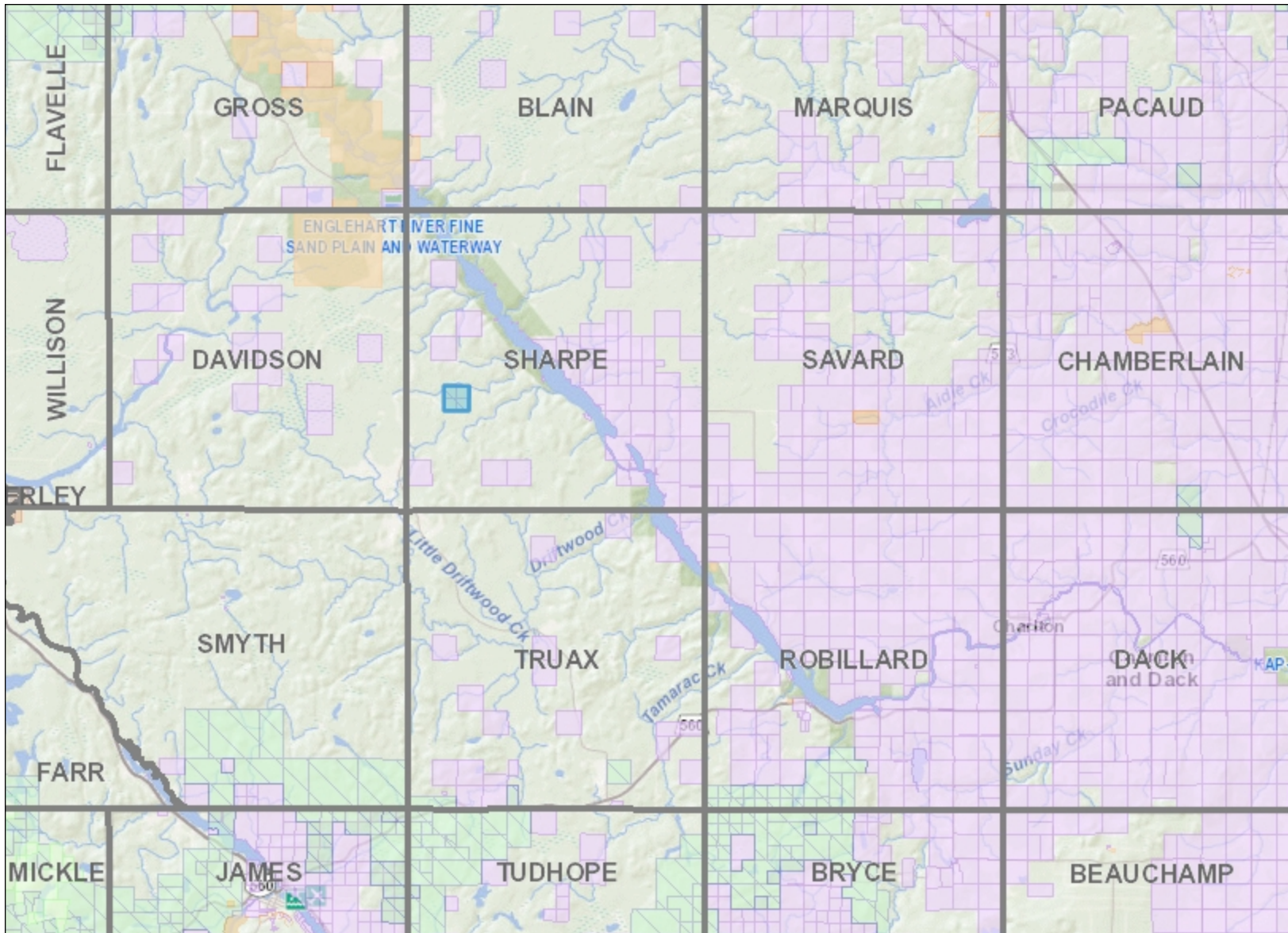
The Ontario Ministry of Northern Development and Mines shall not be liable in any way for the use of, or reliance upon, this map or any information on this map. This map should not be used for: navigation, a plan of survey, routes, nor locations.

© Queen's Printer for Ontario, 2016

Imagery Copyright Notices: Ontario Ministry of Natural Resources and Forestry; NASA Landsat Program; First Base Solutions Inc.; Aéro-Photo (1961) Inc.; DigitalGlobe Inc.; U.S. Geological Survey.

© Copyright for Ontario Parcel data is held by Queen's Printer for Ontario and its licensors and may not be reproduced without permission.





### Legend

- Administration Boundaries**
  - Mining Divisions
  - Resident Geologist District
  - Townships and Areas
  - UTM Grid
  - Geographic Lot Fabric
  - Other Federal Land
- Mineral Tenure Grid**
  - OMTG Tenure Grid
- Alienations**
  - Withdrawal
  - Notice
- Unpatented Claim**
  - Active
  - Reconciled
  - Pending
- Disposition**
  - Disposition
- Disposition Symbols**
  - Camp
  - Disposition Unknown/Pending
  - Freehold Patent Mining Rights Only
  - Freehold Patent Surface Rights Only
  - Freehold Patent Surface and Mining Rights
  - Land Use Permit
  - Leasehold Patent Mining Rights Only
  - Leasehold Patent Surface Rights Only
  - Leasehold Patent Surface and Mining Rights
  - License of Occupation Mining Use Only
  - License of Occupation Surface Use Only
  - License of Occupation Surface and Mining Rights
  - License of Occupation Uses Not Specified
  - Order in Council
  - Tower
  - WPLA
- Geology Layers**
  - AMIS Sites
  - AMIS Features
  - Drill Holes
  - Mineral Occurrences



Projection: Web Mercator



The Ontario Ministry of Northern Development and Mines shall not be liable in any way for the use of, or reliance upon, this map or any information on this map. This map should not be used for: navigation, a plan of survey, routes, nor locations.

Imagery Copyright Notices: Ontario Ministry of Natural Resources and Forestry; NASA Landsat Program; First Base Solutions Inc.; Aéro-Photo (1961) Inc.; DigitalGlobe Inc.; U.S. Geological Survey.