

We are committed to providing [accessible customer service](#).
If you need accessible formats or communications supports, please [contact us](#).

Nous tenons à améliorer [l'accessibilité des services à la clientèle](#).
Si vous avez besoin de formats accessibles ou d'aide à la communication, veuillez [nous contacter](#).

Report on Prospecting at Claim 4273208 Lebel Township Larder Lake Mining Division

August 27, 2017

Table of Contents

| | |
|---|----|
| Introduction | 3 |
| Summary | 3 |
| Property Description and Access | 3 |
| History | 5 |
| Description of Recent Work..... | 5 |
| Conclusions and Recommendations | 6 |
| Data | 7 |
| FIGURE 1: LOCATION OF THE KIRKLAND LAKE PROJECT RELATIVE TO THE PROVINCE OF ONTARIO. | 4 |
| FIGURE 2: A 1:30,000 SCALE MAP SHOWING MNDM LISTED CMC MINING CLAIMS FOR LEBEL, GAUTHIER, McElROY AND BOSTON TOWNSHIPS WITH THE CLAIM: 4273208 HIGHLIGHTED. THE INSET MAP SHOWS THE ENTIRE CMC KIRKLAND LAKE CLAIM FABRIC IN RELATION TO THE LOCAL HIGHWAYS. | 5 |
| FIGURE 3: MAP SHOWING THE GPS TRACKS AND WAYPOINTS FOR THE WORKER'S TRAVERSES ON AUGUST 25-26, 2017 FOR CLAIM 4273208. | 10 |
| FIGURE 4: A 1:5,000 SCALE SATELLITE MAP SHOWING ACCESS AND TRAVERSE TRACKS FOR CLAIM 4273208. | 11 |

Introduction

This report is written for submission to the Ministry of Northern Development and Mines to fulfill the assessment work requirements for claim 4273208. This report summarizes the activities completed during the period of August 25 to 26, 2017 on the unpatented mining claim 4273208. This report was prepared by Canadian Malartic Corporation (CMC) geologist Christopher A. L. Clarke, P.Geo under supervision from Mark Masson, P.Geo.

Summary

The claim 4273208 in Lebel Township is not associated with any major project but it is adjacent to the former Adams iron mine to the south. The claim 4273208 is held by Canadian Malartic Corporation and it is contiguous with other claims on the principal CMC Kirkland Lake Project claim fabric. Claim 4273208 was staked on January 6, 2016. Workers for Canadian Malartic conducted a prospecting and sampling program to fulfill the work requirements of the claim from August 25 to 26, 2017.

Property Description and Access

Claim 4273208, is situated along the south-eastern corner of Lebel Township, District of Temiskaming, Larder Lake Mining Division, Ontario, Canada (Figure 1, Figure 2). Claim 4273208 can be accessed from the north by exiting Highway 66 south onto the Kirkland Lake Dump Road and entering the unmarked old Adams Mine Road. The claim can likewise be accessed from the south using the Adams Mine Road which connects with Highway 650 which in turn connects with Highway 112.

The claim is composed of 6, unpatented units, that combined, are roughly 96 hectares in size. There is no surface right owner. The claim hosts a large esker running east-west (which serves as the old Adams

Mine Road) near the top of the claim before steeply dropping to the south onto a flat expanse composed of poplar, balsam, spruce, jackpine and tag alder stands with pine swamp.



Figure 1: Location of the Kirkland Lake project relative to the Province of Ontario.

History

Description of Recent Work

The work conducted was prospecting, sampling and limited mapping. The goal of the work was to gain an understanding of the geology of the claim, identify historic trenches and pits, map outcrops,

gather samples for gold and major-trace element abundances, and recording the locations using a GPS device. The top half of the claim was prospected using an east-west digital grid composed of 100m spaced lines with 50m pickets. There were no observed outcrops. The claim is primarily water saturated mud covered with moss and thickets of tag alders and Pine and Cedar stands along the western and eastern boundaries of the claim. An east-west trending esker at the north end of the claim is 10-50m wide with a steep drop (3-10m) on the east end of the claim and a gentle slope (<2m) at the west end of the claim.

Conclusions and Recommendations

The claim, 4273208, was prospected from August 25 to August 26, 2017 with the goal of locating and sampling rock outcrops. There were no rock outcrops. The bottom half of the claim should be prospected but it is highly likely there will be no surface outcrops. It is recommended that any further work utilize subsurface detection methods whether by geophysics or drilling.

Respectfully Submitted,
Christopher A. L. Clarke

Data

The work was carried out as follows:

Field:

Prospecting August 25, 2017

Prospecting August 26, 2017

Office:

Report August 27, 2017

Persons who carried out the work:

Prospecting:

Christopher A.L. Clarke Larder Lake, On

Sarah Mills Sudbury Ontario, On

Martyn Harrington Kirkland Lake, On

Report:

Christopher A.L. Clarke

Sample List (UTM zone 17 NAD 83)

No Samples were taken

August 25, 2017 – 1 Day Prospecting

Workers: Christopher Clarke, Sarah Mills & Martyn Harrington

Weather: Cold (3°C) and sunny

We drove our truck from the Dobie office to the Kirkland Lake Dump road following it south to a dirt road which continued south past the Dump. The dirt road followed an esker and appears to continue to the former Adams mine. We followed the road onto and through the claim. The road in the claim was built on sand esker with marsh/swamp to the north with a 1-3m drop while to the south the esker dropped steeply 8 m into alders and pine stands. We parked the truck to the north of the northwest corner of the claim and proceeded south to begin several east-west traverses using a GPS digital grid. We started our first line on the west side of the claim and proceeded east; the ground was muddy and saturated with water covered with moss with Aspen and some Poplar trees growing out of the mud. As we moved east the ground became a dense thicket of alders and the ground became swampy until the ground gently sloped upwards and became sandier with cedar and pine stands. At the end of the first line we proceeded south to the next line and followed it west; we encountered similar ground conditions as the first line. At the end of the second line we proceeded south to the next line and followed it east; we encountered similar ground conditions as the first line. At the end of the third line we headed due north to the esker road and followed the road back to the truck which we used to return to the Dobie office.

Prospecting Diary for Christopher Clarke, B.Sc, M.Sc, P.Geo

August 2, 2017 – 2 Day Prospecting

Workers: Christopher Clarke, Sarah Mills

Weather: Cool (12°C) and sunny

We drove our truck from the Dobie office to the Kirkland Lake Dump road following the same course was the previous day. We parked the truck to the north of the northwest corner of the claim and proceeded south to begin several east-west traverses using a GPS digital grid. We started our first line on the west side of the claim and proceeded east; the ground was muddy and saturated with water covered with moss with Aspen growing in the mud. As we moved east the ground became a dense thicket of alders and the ground became very swampy and open to the sky (no trees/alders) until the ground gently sloped upwards and became sandier with cedar and pine stands. At the end of the first line we proceeded south to the next line and followed it west; we encountered similar ground conditions as the first line. At the end of the second line we proceeded south to the next line and followed it east; we encountered similar ground conditions as the first line but the east end of the swamp had a small creek running east. At the end of the third line we headed due north to the esker road and followed the road back to the truck which we used to return to the Dobie office.

Prospecting Diary for Christopher Clarke, B.Sc, M.Sc, P.Geo

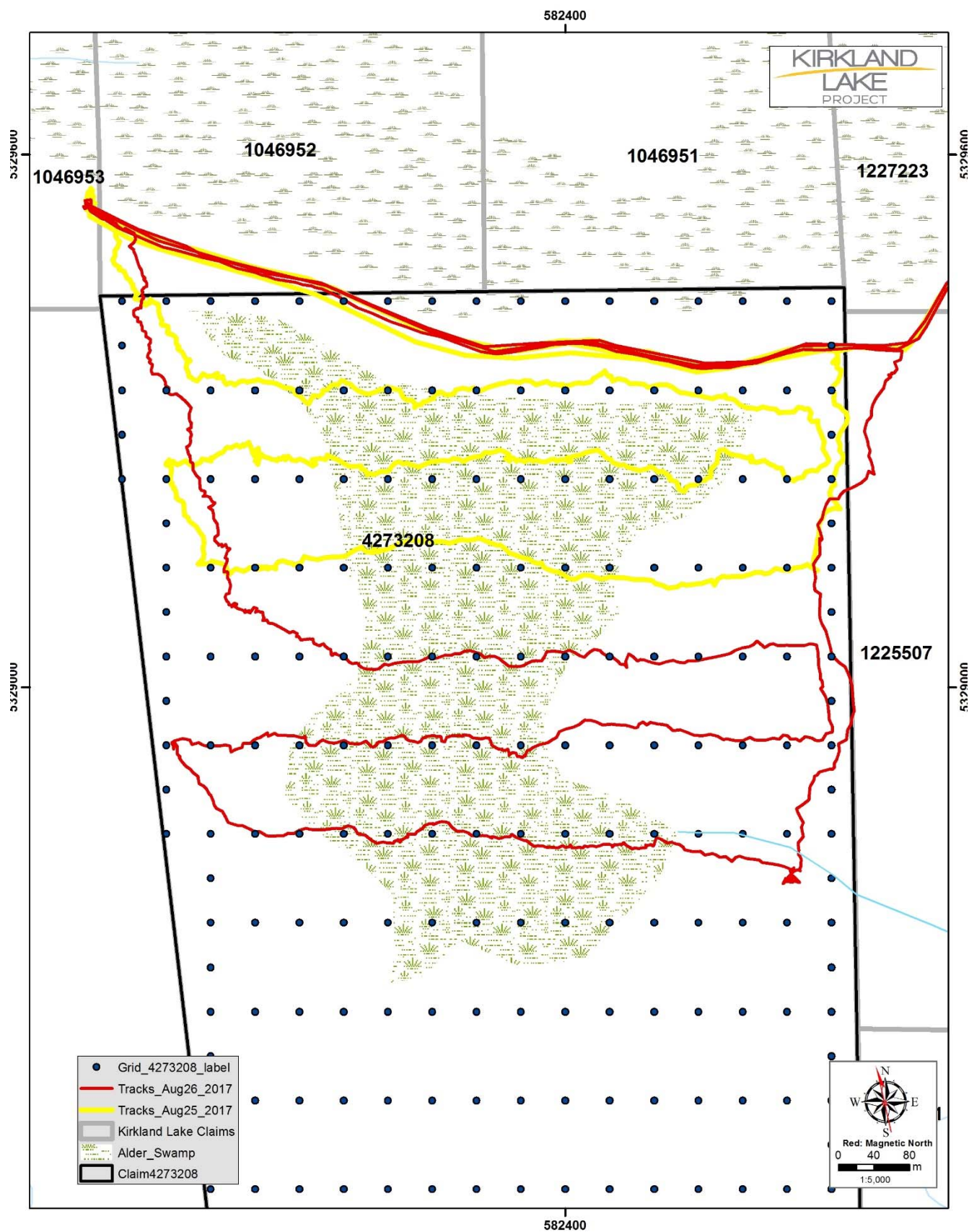


Figure 3: Map showing the GPS tracks and waypoints for the worker's traverses on August 25-26, 2017 for claim 4273208.

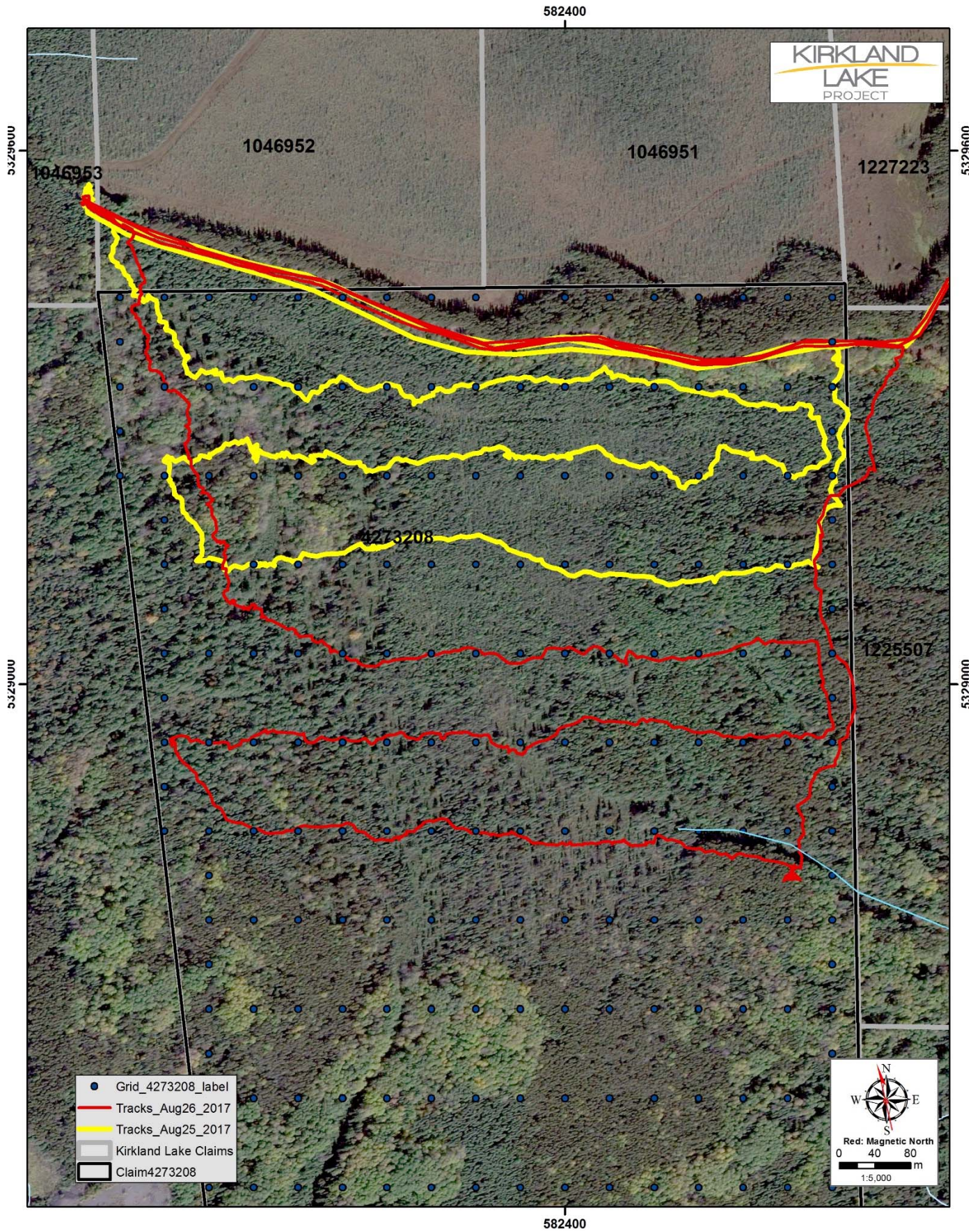


Figure 4: A 1:5,000 scale satellite map showing access and traverse tracks for claim 4273208.