

We are committed to providing [accessible customer service](#).
If you need accessible formats or communications supports, please [contact us](#).

Nous tenons à améliorer [l'accessibilité des services à la clientèle](#).
Si vous avez besoin de formats accessibles ou d'aide à la communication, veuillez [nous contacter](#).

Report on Sampling of Claim 4268834

October 26, 2017

Paul W. Adams

In 2007 Agrium Inc. dumped a large amount of material on crown land adjacent to their leases. We claimed these sites in 2013, claim 4268834 in order to investigate whether it is worth using this material as a feed source for our plant in Matheson. Since that time, Agrium has rehabilitated our mining claim; resulting in the ore piles being flattened and seeded with grass (see images below). This survey is to investigate these now bulldozed ore piles to determine their phosphate concentration. This rehabilitation was approved by the MNDM.

The sampling was conducted in two phases from the 10th to 11th of May and from the 26th to 28th of July in 2017. Our primary interest was to survey the claim in some areas where former ore piles had been and sample any remnant ore piles. Since a majority of this material was mill reject rock it should have a greater than 15% P2O5 and may be worth recovering someday. Although re-vegetated the site was easily accessible and we still were able to locate the now flattened ore piles. All samples are grab samples of consolidated and unconsolidated sands (see map below for locations of ore piles).

Date	Activity	Observations	Hours on Site
09/05/2016	Travel to site -reconnaissance		2
10/05/2016	Reconnaissance, mapping-GPS	Site uniform ally vegetated	8
11/05/2016	Reconnaissance, mapping -GPS	sampling	8
26/07/2016	Travel		4
27/07/2016	Travel to site -reconnaissance		8
28/07/2016	Reconnaissance, mapping-GPS	sampling	8



Figure 1: Note the visible ore piles in 2012.

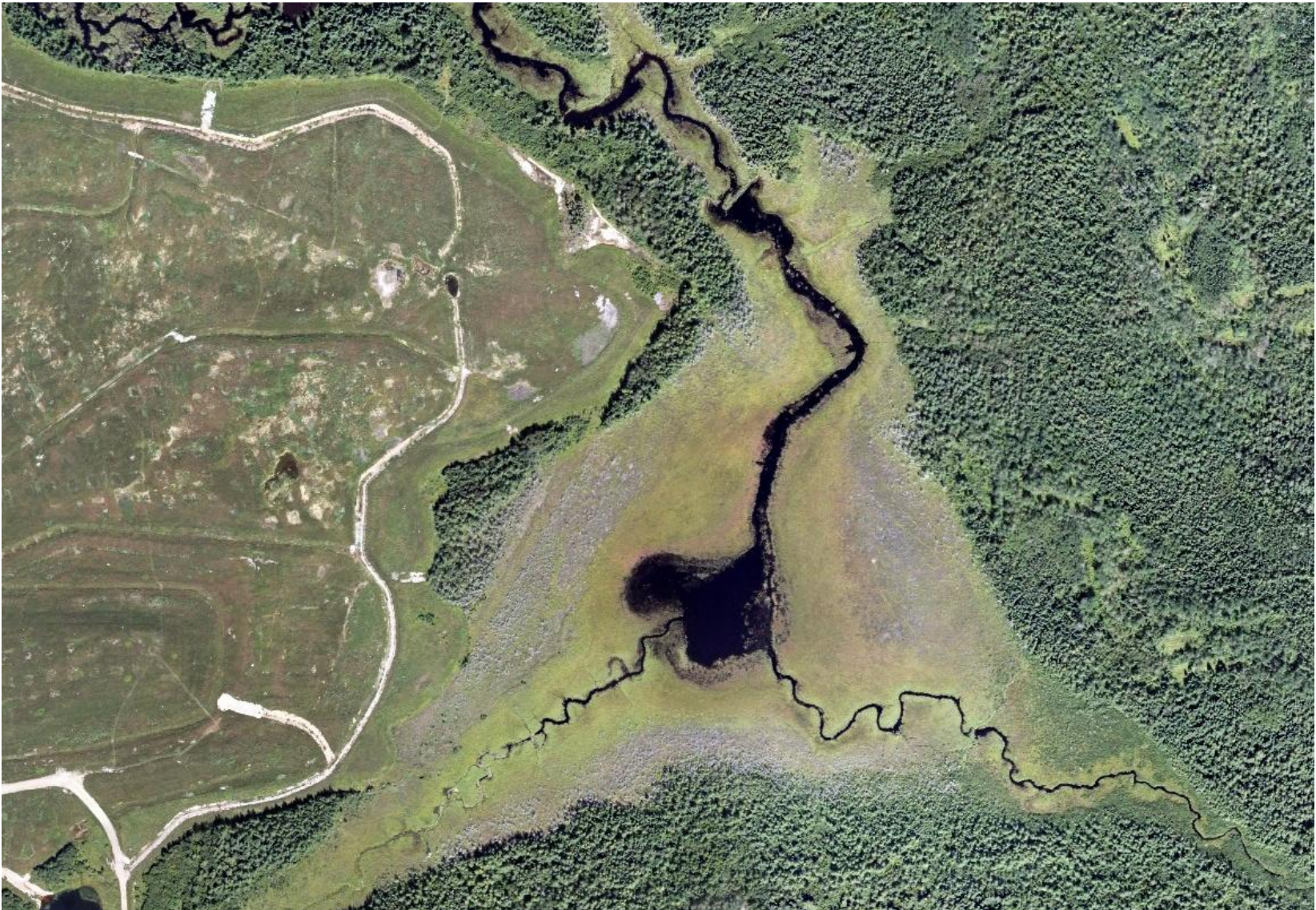


Figure 2: Site in September 2017, note the vegetation and non vegetated areas.

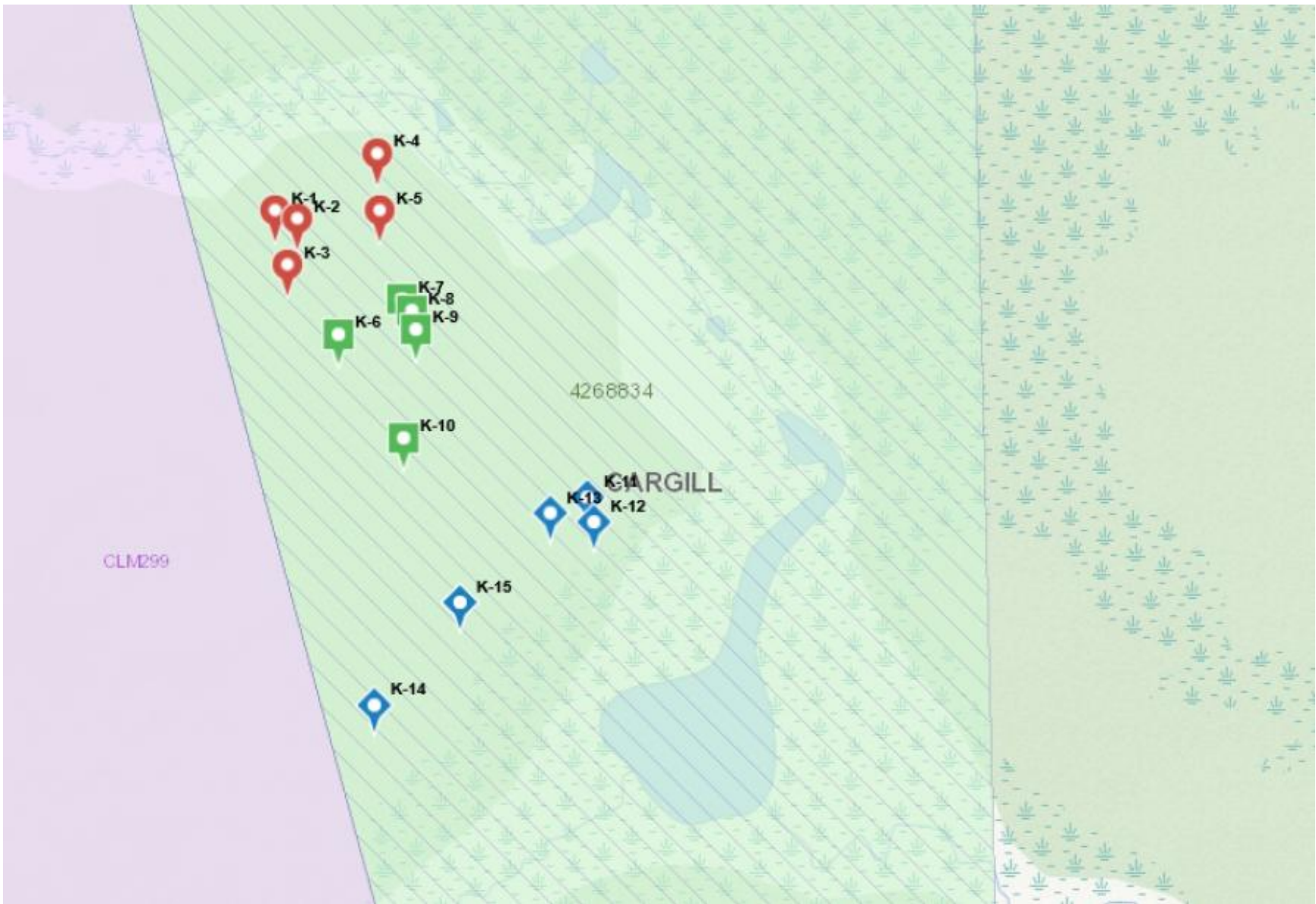


Figure 3 Sample Locations Claim 4268834

Point	East (UTM)	West
K-1	369565	5463074
K-2	369552	5463052
K-3	369553	5363000
K-4	369649	5463027
K-5	369641	5463117
K-6	369597	5462990
K-7	369664	5462978
K-8	369712	5462994
K-9	369672	5462886
K-10	369635	5462885
K-11	369645	5462770
K-12	369622	5462755
K-13	369636	5462719
K-14	369628	5462616
K-15	369600	5462698

Sample locations above

This report presents results from 15 samples collected on claim 4268834, Cargill Township, adjacent to the Agrium Mine in Kapuskasing. The analysis was completed by Activation Laboratories using their phosphate package. A full ICP of these samples is submitted with this report.

Analyte Symbol	P2O5
Unit Symbol	%
Lower Limit	0.01
Method Code	FUS-ICP
K-1	35.25
K-2	16.98
K-3	17.33
K-4	13.20
K-5	12.15
K-7	22.47
K-8	20.75
K-9	17.25
K-10	12.65
K-11	24.39
K-12	13.44
K-13	15.97
K-14	17.70
K-15	20.59

It is clear from these samples that we have located the former ore piles on the property, and that with the right permissions (this is now a restored site) it may be economical for our mill (Matheson Plant) to recover this material.

Magnetic Separation

As a secondary study we looked at magnetically separating this material. Many of our fertilizer clients require a low level of iron. Reports A16 08284 and A16 00980 detail the material as we magnetically separated it. As expected the magnetic component is very high in iron and low in phosphate.

Agrium Site Work:

Agrium Inc. deposited large amounts of waste rock on open crown land. When we claimed this site in 2013 it looked very much like the first satellite image presented here. Despite extreme displeasure with Agrium they rehabilitated the site without even owning the claim. This work was approved as rehabilitation for their closure plan by the MNM. Agrium expensed these costs on our claim as follows

Total Rock Dump Area:	160	ha
Paul Adams' Claim	17.6	ha
Percentage of total area	11%	
	Total Cost for Rock Dump	Paul Adams' Claim Portion
Landform Design	\$ 200,000	\$ 22,000
Grading and Ditching	\$ 2,200,000	\$ 242,000
Vegetation	\$ 1,200,000	\$ 132,000
Total	\$ 3,600,000	\$ 396,000

This rehabilitation work was approved by the MNM, 2333382 Ontario was in possession of the claim before, during, and after this approved rehabilitation work, and, subsequently 2333382 Ontario Inc. is claiming the rehabilitation work in its assessment report.



Date Submitted: 02-Aug-16
Invoice No.: A16-07465
Invoice Date: 04-Aug-16
Your Reference: KAP

Paul Adams
20 Colinayre,
Toronto ON M1T 3A9 Canada

ATTN: Paul Adams

CERTIFICATE OF ANALYSIS

16 Rock samples were submitted for analysis.

The following analytical package(s) were requested:

Code 1A2-Timmins Au - Fire Assay AA

Code 1E2-Timmins Aqua Regia ICP(AQUAGEO)

REPORT **A16-07465**

This report may be reproduced without our consent. If only selected portions of the report are reproduced, permission must be obtained. If no instructions were given at time of sample submittal regarding excess material, it will be discarded within 90 days of this report. Our liability is limited solely to the analytical cost of these analyses. Test results are representative only of material submitted for analysis.

Notes:

If value exceeds upper limit we recommend reassay by fire assay gravimetric-Code 1A3.

Values which exceed the upper limit should be assayed for accurate numbers.

CERTIFIED BY:

A handwritten signature in black ink, appearing to be "Elitsa Hrischeva".

Elitsa Hrischeva, Ph.D.
Quality Control

ACTIVATION LABORATORIES LTD.
1752 Riverside Drive, Timmins, Ontario, Canada, P4R 1N1
TELEPHONE +705 264-0123 or +1.888.228.5227 FAX +1.905.648.9613
E-MAIL Timmins@actlabs.com ACTLABS GROUP WEBSITE www.actlabs.com

Analyte Symbol	Au	Ag	Cd	Cu	Mn	Mo	Ni	Pb	Zn	Al	As	B	Ba	Be	Bi	Ca	Co	Cr	Fe	Ga	La	K	Mg
Unit Symbol	ppb	ppm	ppm	ppm	ppm	ppm	ppm	ppm	ppm	%	ppm	ppm	ppm	ppm	ppm	%	ppm	ppm	%	ppm	ppm	%	%
Lower Limit	5	0.2	0.2	1	1	2	1	2	1	0.01	3	5	1	1	2	0.01	1	2	0.01	1	1	0.01	0.01
Method Code	FA-AA	AR-ICP	AR-ICP	AR-ICP	AR-ICP	AR-ICP	AR-ICP	AR-ICP	AR-ICP	AR-ICP	AR-ICP	AR-ICP	AR-ICP	AR-ICP	AR-ICP	AR-ICP	AR-ICP	AR-ICP	AR-ICP	AR-ICP	AR-ICP	AR-ICP	AR-ICP
WEST SURV	< 5	< 0.2	< 0.2	78	688	< 2	5	< 2	69	1.69	< 3	< 5	31	< 1	3	1.27	25	< 2	7.53	10	8	0.04	0.47
K-1	< 5	< 0.2	2.8	77	548	< 2	11	10	106	0.17	< 3	< 5	893	7	2	22.3	19	5	6.02	5	188	0.07	0.19
K-2	< 5	< 0.2	0.4	18	2060	< 2	44	3	82	0.14	< 3	< 5	372	7	6	11.7	50	35	22.0	7	317	0.02	0.07
K-3	< 5	0.4	0.9	12	6190	< 2	23	28	96	0.08	< 3	< 5	554	3	6	12.3	105	5	23.4	4	210	0.03	0.13
K-4	< 5	0.3	0.9	8	3740	< 2	36	23	129	0.11	< 3	< 5	153	3	7	9.20	118	5	26.3	7	248	< 0.01	0.16
K-5	< 5	0.3	0.7	9	2640	< 2	37	26	128	0.12	< 3	< 5	184	2	5	10.5	110	5	19.8	9	309	0.01	1.24
K-6	< 5	0.3	0.6	133	2680	< 2	22	47	234	0.38	6	< 5	316	6	8	0.86	97	52	> 30.0	22	90	< 0.01	0.06
K-7	< 5	< 0.2	1.7	55	2450	< 2	36	28	115	0.78	< 3	< 5	515	4	2	17.4	81	15	9.29	13	497	0.08	0.84
K-8	< 5	< 0.2	2.6	79	3560	< 2	21	24	91	0.50	< 3	< 5	755	5	4	15.1	58	8	14.1	8	309	0.03	0.32
K-9	< 5	< 0.2	1.1	85	2430	< 2	15	47	72	0.33	< 3	< 5	250	5	5	13.4	74	9	14.3	12	434	0.02	0.78
K-10	< 5	< 0.2	0.8	18	2290	< 2	23	22	88	0.17	< 3	< 5	166	3	4	14.4	56	4	10.3	6	320	0.01	3.97
K-11	< 5	< 0.2	1.7	29	2720	< 2	13	17	59	0.29	< 3	< 5	575	4	3	17.1	35	4	9.56	7	313	0.04	0.91
K-12	< 5	< 0.2	0.9	19	834	< 2	9	24	51	0.21	< 3	< 5	329	4	2	11.3	29	7	7.90	7	256	0.02	0.13
K-13	< 5	< 0.2	1.1	48	2770	< 2	24	26	83	0.64	< 3	< 5	123	5	3	12.5	86	22	16.1	10	339	0.04	0.70
K-14	< 5	1.4	1.0	95	2680	< 2	31	19	86	0.29	< 3	< 5	597	4	5	14.2	124	10	13.7	7	305	0.03	1.07
K-15	< 5	< 0.2	1.5	35	1360	< 2	38	17	89	0.24	< 3	< 5	120	4	3	15.3	88	9	8.93	9	341	0.03	0.24

Analyte Symbol	Na	P	Sb	Sc	Se	Sn	Sr	Te	Tl	Ti	U	V	W	Y	Zr	S
Unit Symbol	%	%	ppm	ppm	ppm	ppm	ppm	ppm	ppm	%	ppm	ppm	ppm	ppm	ppm	%
Lower Limit	0.001	0.001	5	0.1	5	5	1	1	2	0.01	10	1	1	1	1	0.001
Method Code	AR-ICP	AR-ICP	AR-ICP	AR-ICP	AR-ICP	AR-ICP	AR-ICP	AR-ICP	AR-ICP	AR-ICP	AR-ICP	AR-ICP	AR-ICP	AR-ICP	AR-ICP	AR-ICP
WEST SURV	0.103	0.041	< 5	2.5	< 5	< 5	16	5	< 2	0.51	< 10	182	< 1	9	13	0.036
K-1	0.345	> 5.00	< 5	13.9	< 5	< 5	1130	< 1	< 2	0.01	75	138	1	45	17	0.099
K-2	0.139	4.95	10	13.6	< 5	< 5	826	3	< 2	0.02	< 10	197	4	95	22	0.019
K-3	0.201	4.96	12	21.2	< 5	5	1060	3	< 2	0.01	75	113	3	43	29	0.051
K-4	0.058	3.86	14	21.7	< 5	< 5	1060	4	< 2	0.01	29	127	2	56	29	0.095
K-5	0.078	3.85	9	20.4	< 5	< 5	1230	4	< 2	0.02	37	207	3	78	22	0.134
K-6	0.025	0.202	17	69.2	< 5	11	431	5	< 2	0.07	21	2170	2	34	19	0.052
K-7	0.119	> 5.00	< 5	30.7	< 5	< 5	1690	3	< 2	0.08	33	280	2	151	36	0.349
K-8	0.162	> 5.00	7	33.5	< 5	< 5	1280	2	< 2	0.03	46	217	6	97	40	0.135
K-9	0.059	> 5.00	7	27.9	< 5	< 5	1170	3	< 2	0.03	40	225	2	117	23	0.930
K-10	0.070	4.08	< 5	15.3	< 5	< 5	887	3	< 2	0.06	12	122	3	103	18	0.405
K-11	0.171	> 5.00	< 5	17.8	< 5	< 5	1300	3	< 2	0.03	37	121	2	83	25	0.255
K-12	0.112	4.64	< 5	24.7	< 5	< 5	869	2	< 2	0.04	38	148	< 1	95	25	0.450
K-13	0.236	> 5.00	7	25.7	< 5	< 5	1230	3	< 2	0.06	13	325	4	118	20	2.03
K-14	0.155	> 5.00	7	24.1	< 5	< 5	1260	3	< 2	0.07	40	316	5	93	30	0.324
K-15	0.137	> 5.00	< 5	28.4	< 5	< 5	1290	3	< 2	0.05	45	138	< 1	98	23	1.49

Analyte Symbol	Au	Ag	Cd	Cu	Mn	Mo	Ni	Pb	Zn	Al	As	B	Ba	Be	Bi	Ca	Co	Cr	Fe	Ga	La	K	Mg
Unit Symbol	ppb	ppm	ppm	ppm	ppm	ppm	ppm	ppm	ppm	%	ppm	ppm	ppm	ppm	ppm	%	ppm	ppm	%	ppm	ppm	%	%
Lower Limit	5	0.2	0.2	1	1	2	1	2	1	0.01	3	5	1	1	2	0.01	1	2	0.01	1	1	0.01	0.01
Method Code	FA-AA	AR-ICP	AR-ICP	AR-ICP	AR-ICP	AR-ICP	AR-ICP	AR-ICP	AR-ICP	AR-ICP	AR-ICP	AR-ICP	AR-ICP	AR-ICP	AR-ICP	AR-ICP	AR-ICP	AR-ICP	AR-ICP	AR-ICP	AR-ICP	AR-ICP	AR-ICP
GXR-1 Meas		31.3	2.4	1090	783	14	31	697	618	0.37	358	11	451	< 1	1460	0.88	6	7	21.9	5	5	0.03	0.14
GXR-1 Cert		31.0	3.30	1110	852	18.0	41.0	730	760	3.52	427	15.0	750	1.22	1380	0.960	8.20	12.0	23.6	13.8	7.50	0.050	0.217
GXR-4 Meas		3.8	0.2	6610	144	321	38	50	77	3.16	108	< 5	87	2	20	1.03	15	59	3.15	11	54	1.83	1.78
GXR-4 Cert		4.0	0.860	6520	155	310	42.0	52.0	73.0	7.20	98.0	4.50	1640	1.90	19.0	1.01	14.6	64.0	3.09	20.0	64.5	4.01	1.66
GXR-6 Meas		0.4	< 0.2	65	1020	< 2	21	95	117	7.44	234	< 5	1300	< 1	< 2	0.18	13	79	5.20	16	11	1.09	0.40
GXR-6 Cert		1.30	1.00	66.0	1010	2.40	27.0	101	118	17.7	330	9.80	1300	1.40	0.290	0.180	13.8	96.0	5.58	35.0	13.9	1.87	0.609
OxD128 Meas	419																						
OxD128 Cert	424.000																						
K-2 Orig		< 0.2	0.4	20	2060	< 2	44	3	85	0.14	< 3	< 5	370	7	6	11.6	50	35	22.1	7	320	0.02	0.07
K-2 Dup		< 0.2	0.4	17	2060	< 2	44	3	80	0.14	< 3	< 5	374	7	6	11.7	49	35	21.9	6	314	0.02	0.07
K-9 Orig	< 5																						
K-9 Dup	< 5																						
K-10 Orig		< 0.2	0.8	18	2320	< 2	27	22	90	0.17	< 3	< 5	168	3	4	14.5	56	4	10.5	6	327	0.01	4.04
K-10 Dup		< 0.2	0.7	17	2260	< 2	19	21	86	0.16	< 3	< 5	164	3	4	14.2	56	4	10.2	6	313	0.01	3.90
Method Blank	< 5																						
Method Blank	< 5																						

Analyte Symbol	Na	P	Sb	Sc	Se	Sn	Sr	Te	Tl	Ti	U	V	W	Y	Zr	S
Unit Symbol	%	%	ppm	ppm	ppm	ppm	ppm	ppm	ppm	%	ppm	ppm	ppm	ppm	ppm	%
Lower Limit	0.001	0.001	5	0.1	5	5	1	1	2	0.01	10	1	1	1	1	0.001
Method Code	AR-ICP	AR-ICP	AR-ICP	AR-ICP	AR-ICP	AR-ICP	AR-ICP	AR-ICP	AR-ICP	AR-ICP	AR-ICP	AR-ICP	AR-ICP	AR-ICP	AR-ICP	AR-ICP
GXR-1 Meas	0.068	0.036	90	1.0	8	24	157	7	< 2	< 0.01	30	86	156	25	14	0.192
GXR-1 Cert	0.0520	0.0650	122	1.58	16.6	54.0	275	13.0	0.390	0.036	34.9	80.0	164	32.0	38.0	0.257
GXR-4 Meas	0.150	0.122	< 5	7.1	< 5	5	74	2	< 2	0.15	< 10	91	15	13	10	1.81
GXR-4 Cert	0.564	0.120	4.80	7.70	5.60	5.60	221	0.970	3.20	0.29	6.20	87.0	30.8	14.0	186	1.77
GXR-6 Meas	0.127	0.036	7	22.0	< 5	< 5	32	3	< 2		< 10	185	< 1	7	15	0.015
GXR-6 Cert	0.104	0.0350	3.60	27.6	0.940	1.70	35.0	0.0180	2.20		1.54	186	1.90	14.0	110	0.0160
OxD128 Meas																
OxD128 Cert																
K-2 Orig	0.139	4.96	11	13.6	< 5	< 5	824	4	< 2	0.02	< 10	199	4	95	22	0.019
K-2 Dup	0.140	4.94	9	13.6	< 5	< 5	828	3	< 2	0.02	< 10	195	4	95	22	0.019
K-9 Orig																
K-9 Dup																
K-10 Orig	0.071	4.11	< 5	15.5	< 5	< 5	898	3	< 2	0.06	13	124	3	104	18	0.410
K-10 Dup	0.069	4.04	< 5	15.0	< 5	< 5	875	3	< 2	0.06	12	120	3	101	18	0.401
Method Blank																
Method Blank																



Date Submitted: 02-Aug-16
Invoice No.: A16-07465 (i)
Invoice Date: 16-Aug-16
Your Reference: KAP

Paul Adams
20 Colinayre,
Toronto ON M1T 3A9 Canada

ATTN: Paul Adams

CERTIFICATE OF ANALYSIS

16 Rock samples were submitted for analysis.

The following analytical package(s) were requested:

Code 1A2-Timmins Au - Fire Assay AA

Code 1E2-Timmins Aqua Regia ICP(AQUAGEO)

REPORT **A16-07465 (i)**

This report may be reproduced without our consent. If only selected portions of the report are reproduced, permission must be obtained. If no instructions were given at time of sample submittal regarding excess material, it will be discarded within 90 days of this report. Our liability is limited solely to the analytical cost of these analyses. Test results are representative only of material submitted for analysis.

Notes:

If value exceeds upper limit we recommend reassay by fire assay gravimetric-Code 1A3.

Values which exceed the upper limit should be assayed for accurate numbers.

CERTIFIED BY:

A handwritten signature in black ink, appearing to be "Emmanuel Esemé", written over a horizontal line.

Emmanuel Esemé , Ph.D.
Quality Control

ACTIVATION LABORATORIES LTD.
1752 Riverside Drive, Timmins, Ontario, Canada, P4R 1N1
TELEPHONE +705 264-0123 or +1.888.228.5227 FAX +1.905.648.9613
E-MAIL Timmins@actlabs.com ACTLABS GROUP WEBSITE www.actlabs.com

Analyte Symbol	P2O5
Unit Symbol	%
Lower Limit	0.01
Method Code	FUS-ICP
K-1	35.25
K-2	16.98
K-3	17.33
K-4	13.20
K-5	12.15
K-7	22.47
K-8	20.75
K-9	17.25
K-10	12.65
K-11	24.39
K-12	13.44
K-13	15.97
K-14	17.70
K-15	20.59

Analyte Symbol	P2O5
Unit Symbol	%
Lower Limit	0.01
Method Code	FUS-ICP
NIST 694 Meas	30.18
NIST 694 Cert	30.2
DNC-1 Meas	0.07
DNC-1 Cert	0.070
GBW 07113 Meas	0.03
GBW 07113 Cert	0.0500
W-2a Meas	0.14
W-2a Cert	0.130
SY-4 Meas	0.14
SY-4 Cert	0.131
BIR-1a Meas	0.02
BIR-1a Cert	0.021
BCR-2 Meas	0.36
BCR-2 Cert	0.35
K-15 Orig	20.59
K-15 Split PREP DUP	20.05



Date Submitted: 18-Aug-16
Invoice No.: A16-08284
Invoice Date: 30-Aug-16
Your Reference: Aug. 18/16

Paul Adams

ATTN: Paul Adams

CERTIFICATE OF ANALYSIS

3 Rock samples were submitted for analysis.

The following analytical package(s) were requested:

Code 4B (1-10) Major Elements Fusion ICP(WRA)

REPORT **A16-08284**

This report may be reproduced without our consent. If only selected portions of the report are reproduced, permission must be obtained. If no instructions were given at time of sample submittal regarding excess material, it will be discarded within 90 days of this report. Our liability is limited solely to the analytical cost of these analyses. Test results are representative only of material submitted for analysis.

Notes:

Total includes all elements in % oxide to the left of total.

Values which exceed the upper limit should be assayed for accurate numbers.

CERTIFIED BY:

A handwritten signature in black ink, appearing to read "Emmanuel Esemé".

Emmanuel Esemé , Ph.D.
Quality Control

ACTIVATION LABORATORIES LTD.
41 Bittern Street, Ancaster, Ontario, Canada, L9G 4V5
TELEPHONE +905 648-9611 or +1.888.228.5227 FAX +1.905.648.9613
E-MAIL Ancaster@actlabs.com ACTLABS GROUP WEBSITE www.actlabs.com

Date Submitted: 18-Aug-16
Invoice No.: A16-08284
Invoice Date: 30-Aug-16
Your Reference: Aug. 18/16

Paul Adams

ATTN: Paul Adams

CERTIFICATE OF ANALYSIS

3 Rock samples were submitted for analysis.

The following analytical package(s) were requested: Code 1E2-Timmins Aqua Regia ICP(AQUAGEO)

REPORT **A16-08284**

This report may be reproduced without our consent. If only selected portions of the report are reproduced, permission must be obtained. If no instructions were given at time of sample submittal regarding excess material, it will be discarded within 90 days of this report. Our liability is limited solely to the analytical cost of these analyses. Test results are representative only of material submitted for analysis.

Notes:

Total includes all elements in % oxide to the left of total.

Values which exceed the upper limit should be assayed for accurate numbers.

CERTIFIED BY:



Emmanuel Eseme , Ph.D.
Quality Control

ACTIVATION LABORATORIES LTD.
1752 Riverside Drive, Timmins, Ontario, Canada, P4R 1N1
TELEPHONE +705 264-0123 or +1.888.228.5227 FAX +1.905.648.9613
E-MAIL Timmins@actlabs.com ACTLABS GROUP WEBSITE www.actlabs.com

Results

Activation Laboratories Ltd.

Report: A16-08284

Analyte Symbol	Ag	Cd	Cu	Mn	Mo	Ni	Pb	Zn	Al	As	B	Ba	Be	Bi	Ca	Co	Cr	Fe	Ga	La	K	Mg	Na
Unit Symbol	ppm	ppm	ppm	ppm	ppm	ppm	ppm	ppm	%	ppm	ppm	ppm	ppm	ppm	%	ppm	ppm	%	ppm	ppm	%	%	%
Lower Limit	0.2	0.2	1	1	2	1	2	1	0.01	3	5	1	1	2	0.01	1	2	0.01	1	1	0.01	0.01	0.001
Method Code	AR-ICP	AR-ICP	AR-ICP	AR-ICP	AR-ICP	AR-ICP	AR-ICP	AR-ICP	AR-ICP	AR-ICP	AR-ICP	AR-ICP	AR-ICP	AR-ICP	AR-ICP	AR-ICP	AR-ICP	AR-ICP	AR-ICP	AR-ICP	AR-ICP	AR-ICP	AR-ICP
MAGSEP																							
NON-MAG																							
POT-1	1.0	< 0.2	364	695	< 2	24	< 2	54	2.56	< 3	< 5	190	1	< 2	2.79	44	2	6.51	8	8	1.24	3.01	0.830

Results

Activation Laboratories Ltd.

Report: A16-08284

Analyte Symbol	P	Sb	Sc	Se	Sn	Sr	Te	Tl	Ti	U	V	W	Y	Zr	S	P2O5
Unit Symbol	%	ppm	ppm	ppm	ppm	ppm	ppm	ppm	%	ppm	ppm	ppm	ppm	ppm	%	%
Lower Limit	0.001	5	0.1	5	5	1	1	2	0.01	10	1	1	1	1	0.001	0.01
Method Code	AR-ICP	AR-ICP	AR-ICP	AR-ICP	AR-ICP	AR-ICP	AR-ICP	AR-ICP	AR-ICP	AR-ICP	AR-ICP	AR-ICP	AR-ICP	AR-ICP	AR-ICP	FUS-ICP
MAGSEP																7.26
NON-MAG																23.58
POT-1	0.013	< 5	3.1	< 5	< 5	190	5	< 2	0.67	< 10	112	< 1	4	153	0.729	

Analyte Symbol	Ag	Cd	Cu	Mn	Mo	Ni	Pb	Zn	Al	As	B	Ba	Be	Bi	Ca	Co	Cr	Fe	Ga	La	K	Mg	Na
Unit Symbol	ppm	ppm	ppm	ppm	ppm	ppm	ppm	ppm	%	ppm	ppm	ppm	ppm	ppm	%	ppm	ppm	%	ppm	ppm	%	%	%
Lower Limit	0.2	0.2	1	1	2	1	2	1	0.01	3	5	1	1	2	0.01	1	2	0.01	1	1	0.01	0.01	0.001
Method Code	AR-ICP	AR-ICP	AR-ICP	AR-ICP	AR-ICP	AR-ICP	AR-ICP	AR-ICP	AR-ICP	AR-ICP	AR-ICP	AR-ICP	AR-ICP	AR-ICP	AR-ICP	AR-ICP	AR-ICP	AR-ICP	AR-ICP	AR-ICP	AR-ICP	AR-ICP	AR-ICP
GXR-1 Meas	27.9	2.8	1050	737	13	18	530	635	0.31	350	7	417	< 1	1310	0.76	4	6	22.4	4	4	0.03	0.12	0.052
GXR-1 Cert	31.0	3.30	1110	852	18.0	41.0	730	760	3.52	427	15.0	750	1.22	1380	0.960	8.20	12.0	23.6	13.8	7.50	0.050	0.217	0.0520
NIST 694 Meas																							
NIST 694 Cert																							
DNC-1 Meas																							
DNC-1 Cert																							
GXR-4 Meas	3.5	0.4	6020	129	287	32	36	65	2.63	95	< 5	82	1	12	0.85	13	53	3.06	9	44	1.56	1.53	0.132
GXR-4 Cert	4.0	0.860	6520	155	310	42.0	52.0	73.0	7.20	98.0	4.50	1640	1.90	19.0	1.01	14.6	64.0	3.09	20.0	64.5	4.01	1.66	0.564
GXR-6 Meas	0.3	0.2	63	972	< 2	17	78	113	6.89	232	< 5	1230	< 1	< 2	0.16	13	75	5.54	14	10	0.97	0.37	0.084
GXR-6 Cert	1.30	1.00	66.0	1010	2.40	27.0	101	118	17.7	330	9.80	1300	1.40	0.290	0.180	13.8	96.0	5.58	35.0	13.9	1.87	0.609	0.104
W-2a Meas																							
W-2a Cert																							
SY-4 Meas																							
SY-4 Cert																							
BIR-1a Meas																							
BIR-1a Cert																							
NON-MAG Orig																							
NON-MAG Dup																							
POT-1 Orig	1.0	< 0.2	364	684	< 2	23	< 2	53	2.52	< 3	< 5	200	1	< 2	2.75	44	2	6.44	8	8	1.23	2.97	0.814
POT-1 Dup	1.0	< 0.2	363	705	< 2	24	< 2	55	2.60	< 3	< 5	181	1	< 2	2.83	45	2	6.58	9	8	1.24	3.05	0.847
Method Blank	< 0.2	< 0.2	< 1	< 1	< 2	< 1	< 2	< 1	< 0.01	< 3	< 5	8	< 1	< 2	< 0.01	< 1	< 2	< 0.01	< 1	< 1	< 0.01	< 0.01	0.011

Analyte Symbol	P	Sb	Sc	Se	Sn	Sr	Te	Tl	Ti	U	V	W	Y	Zr	S	P2O5
Unit Symbol	%	ppm	ppm	ppm	ppm	ppm	ppm	ppm	%	ppm	ppm	ppm	ppm	ppm	%	%
Lower Limit	0.001	5	0.1	5	5	1	1	2	0.01	10	1	1	1	1	0.001	0.01
Method Code	AR-ICP	AR-ICP	AR-ICP	AR-ICP	AR-ICP	AR-ICP	AR-ICP	AR-ICP	AR-ICP	AR-ICP	AR-ICP	AR-ICP	AR-ICP	AR-ICP	AR-ICP	FUS-ICP
GXR-1 Meas	0.032	80	1.0	7	19	134	12	< 2	< 0.01	30	79	134	23	13	0.179	
GXR-1 Cert	0.0650	122	1.58	16.6	54.0	275	13.0	0.390	0.036	34.9	80.0	164	32.0	38.0	0.257	
NIST 694 Meas																30.19
NIST 694 Cert																30.2
DNC-1 Meas																0.06
DNC-1 Cert																0.070
GXR-4 Meas	0.111	< 5	6.1	7	< 5	66	3	< 2	0.13	< 10	81	13	11	8	1.61	
GXR-4 Cert	0.120	4.80	7.70	5.60	5.60	221	0.970	3.20	0.29	6.20	87.0	30.8	14.0	186	1.77	
GXR-6 Meas	0.030	< 5	19.8	< 5	< 5	30	< 1	< 2		< 10	171	< 1	6	13	0.012	
GXR-6 Cert	0.0350	3.60	27.6	0.940	1.70	35.0	0.0180	2.20		1.54	186	1.90	14.0	110	0.0160	
W-2a Meas																0.15
W-2a Cert																0.130
SY-4 Meas																0.13
SY-4 Cert																0.131
BIR-1a Meas																0.02
BIR-1a Cert																0.021
NON-MAG Orig																23.59
NON-MAG Dup																23.56
POT-1 Orig	0.012	< 5	3.1	< 5	< 5	187	6	< 2	0.66	< 10	110	< 1	4	150	0.718	
POT-1 Dup	0.013	< 5	3.2	< 5	< 5	192	4	< 2	0.68	< 10	113	< 1	4	157	0.741	
Method Blank	< 0.001	< 5	< 0.1	< 5	< 5	< 1	< 1	< 2	< 0.01	< 10	< 1	< 1	< 1	< 1	< 0.001	



Date Submitted: 01-Feb-17
Invoice No.: A17-00980
Invoice Date: 14-Feb-17
Your Reference: FEB 1/17

Paul Adams
20 Colinayre
Toronto ON M1T 3A9
Canada

ATTN: Paul Adams

CERTIFICATE OF ANALYSIS

1 Rock samples were submitted for analysis.

The following analytical package(s) were requested:

Code 1A2-Timmins Au - Fire Assay AA

REPORT **A17-00980**

This report may be reproduced without our consent. If only selected portions of the report are reproduced, permission must be obtained. If no instructions were given at time of sample submittal regarding excess material, it will be discarded within 90 days of this report. Our liability is limited solely to the analytical cost of these analyses. Test results are representative only of material submitted for analysis.

Notes:

If value exceeds upper limit we recommend reassay by fire assay gravimetric-Code 1A3.

Total includes all elements in % oxide to the left of total.

CERTIFIED BY:

A handwritten signature in black ink, appearing to be "Emmanuel Esemé", written over a horizontal line.

Emmanuel Esemé , Ph.D.
Quality Control

ACTIVATION LABORATORIES LTD.
1752 Riverside Drive, Timmins, Ontario, Canada, P4R 1N1
TELEPHONE +705 264-0123 or +1.888.228.5227 FAX +1.905.648.9613
E-MAIL Timmins@actlabs.com ACTLABS GROUP WEBSITE www.actlabs.com

Date Submitted: 01-Feb-17
Invoice No.: A17-00980
Invoice Date: 14-Feb-17
Your Reference: FEB 1/17

Paul Adams
20 Colinayre
Toronto ON M1T 3A9
Canada

ATTN: Paul Adams

CERTIFICATE OF ANALYSIS

1 Rock samples were submitted for analysis.

The following analytical package(s) were requested: Code 4B (FeO) (1-10) Major Elements Fusion ICP(WRA)

REPORT **A17-00980**

This report may be reproduced without our consent. If only selected portions of the report are reproduced, permission must be obtained. If no instructions were given at time of sample submittal regarding excess material, it will be discarded within 90 days of this report. Our liability is limited solely to the analytical cost of these analyses. Test results are representative only of material submitted for analysis.

Notes:

If value exceeds upper limit we recommend reassay by fire assay gravimetric-Code 1A3.

Total includes all elements in % oxide to the left of total.

CERTIFIED BY:

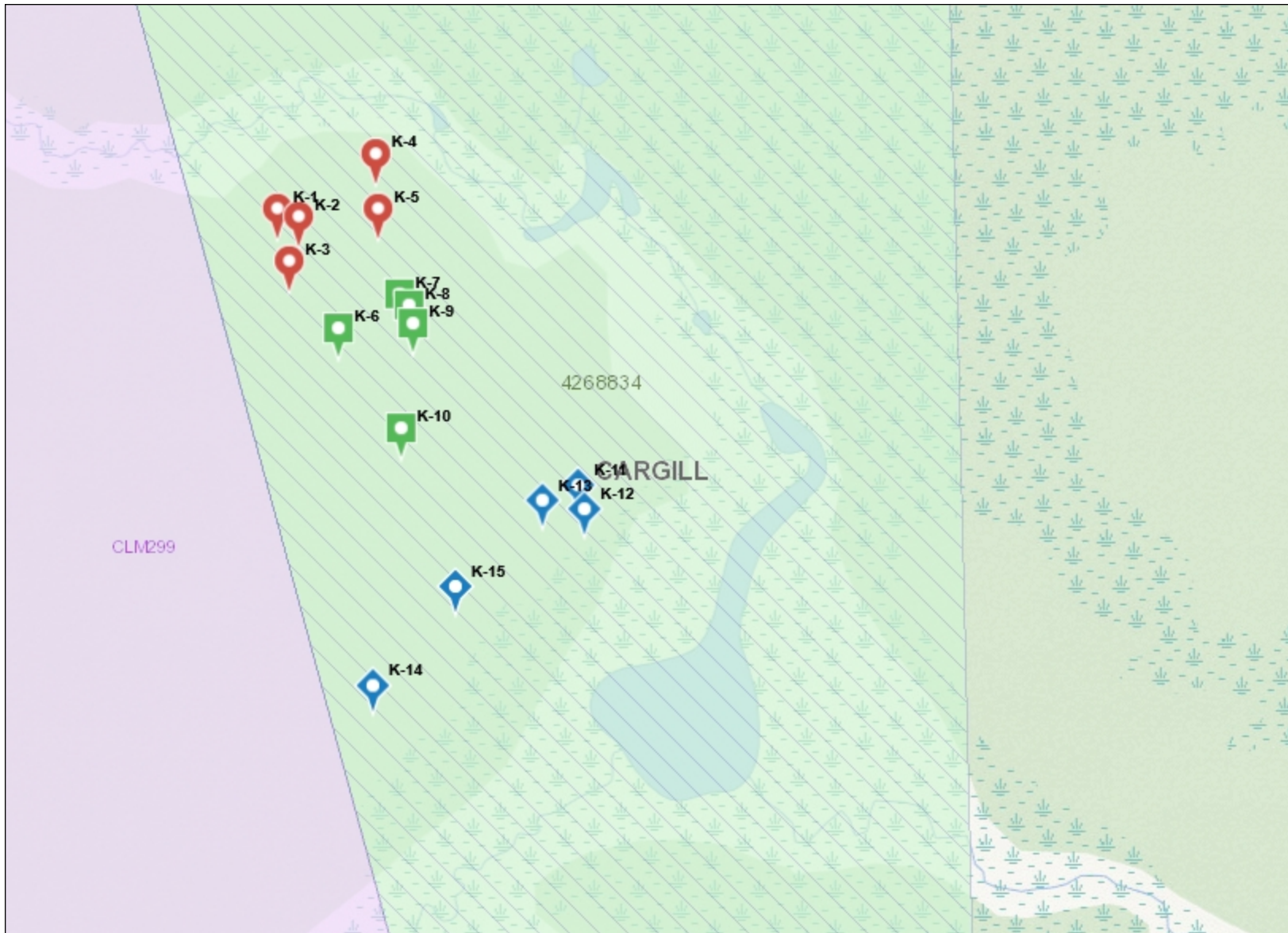


Emmanuel Esemé , Ph.D.
Quality Control

ACTIVATION LABORATORIES LTD.
41 Bittern Street, Ancaster, Ontario, Canada, L9G 4V5
TELEPHONE +905 648-9611 or +1.888.228.5227 FAX +1.905.648.9613
E-MAIL Ancaster@actlabs.com ACTLABS GROUP WEBSITE www.actlabs.com

Analyte Symbol	Au	P2O5
Unit Symbol	ppb	%
Lower Limit	5	0.01
Method Code	FA-AA	FUS- ICP
001	< 5	21.93

Analyte Symbol	Au	P2O5
Unit Symbol	ppb	%
Lower Limit	5	0.01
Method Code	FA-AA	FUS-ICP
NIST 694 Meas		30.25
NIST 694 Cert		30.2
DNC-1 Meas		0.06
DNC-1 Cert		0.070
GBW 07113 Meas		0.04
GBW 07113 Cert		0.0500
W-2a Meas		0.13
W-2a Cert		0.130
SY-4 Meas		0.10
SY-4 Cert		0.131
OREAS203 Meas	907	
OREAS203 Cert	871.000	
OREAS 251(FA-Anaster) Meas	507	
OREAS 251(FA-Anaster) Cert	504	
OREAS 251(FA-Anaster) Meas	497	
OREAS 251(FA-Anaster) Cert	504	
OREAS 251(FA-Anaster) Meas	500	
OREAS 251(FA-Anaster) Cert	504	
OREAS 251(FA-Anaster) Meas	499	
OREAS 251(FA-Anaster) Cert	504	
OREAS 251(FA-Anaster) Meas	498	
OREAS 251(FA-Anaster) Cert	504	
OREAS 251(FA-Anaster) Meas	516	



Legend

- Administration Boundaries**
 - Mining Divisions
 - Resident Geologist District
 - Townships and Areas
 - UTM Grid
 - Geographic Lot Fabric
 - Other Federal Land
- Mineral Tenure Grid**
 - OM TG Tenure Grid
- Alienations**
 - Withdrawal
 - Notice
- Unpatented Claim**
 - Active
 - Reconciled
 - Pending
- Disposition**
 - Disposition
- Disposition Symbols**
 - Camp
 - Disposition Unknown/Pending
 - Freehold Patent Mining Rights Only
 - Freehold Patent Surface Rights Only
 - Freehold Patent Surface and Mining Rights
 - Land Use Permit
 - Leasehold Patent Mining Rights Only
 - Leasehold Patent Surface Rights Only
 - Leasehold Patent Surface and Mining Rights
 - License of Occupation Mining Use Only
 - License of Occupation Surface Use Only
 - License of Occupation Surface and Mining Rights
 - License of Occupation Uses Not Specified
 - Order in Council
 - Tower
 - WPLA
- Geology Layers**
 - AMIS Sites
 - AMIS Features
 - Drill Holes
 - Mineral Occurrences



Projection: Web Mercator



The Ontario Ministry of Northern Development and Mines shall not be liable in any way for the use of, or reliance upon, this map or any information on this map. This map should not be used for: navigation, a plan of survey, routes, nor locations.

© Queen's Printer for Ontario, 2016

Imagery Copyright Notices: Ontario Ministry of Natural Resources and Forestry; NASA Landsat Program; First Base Solutions Inc.; Aéro-Photo (1961) Inc.; DigitalGlobe Inc.; U.S. Geological Survey.

© Copyright for Ontario Parcel data is held by Queen's Printer for Ontario and its licensors and may not be reproduced without permission.



Date / Time of Issue: Sun Mar 23 14:00:40 EST 2014

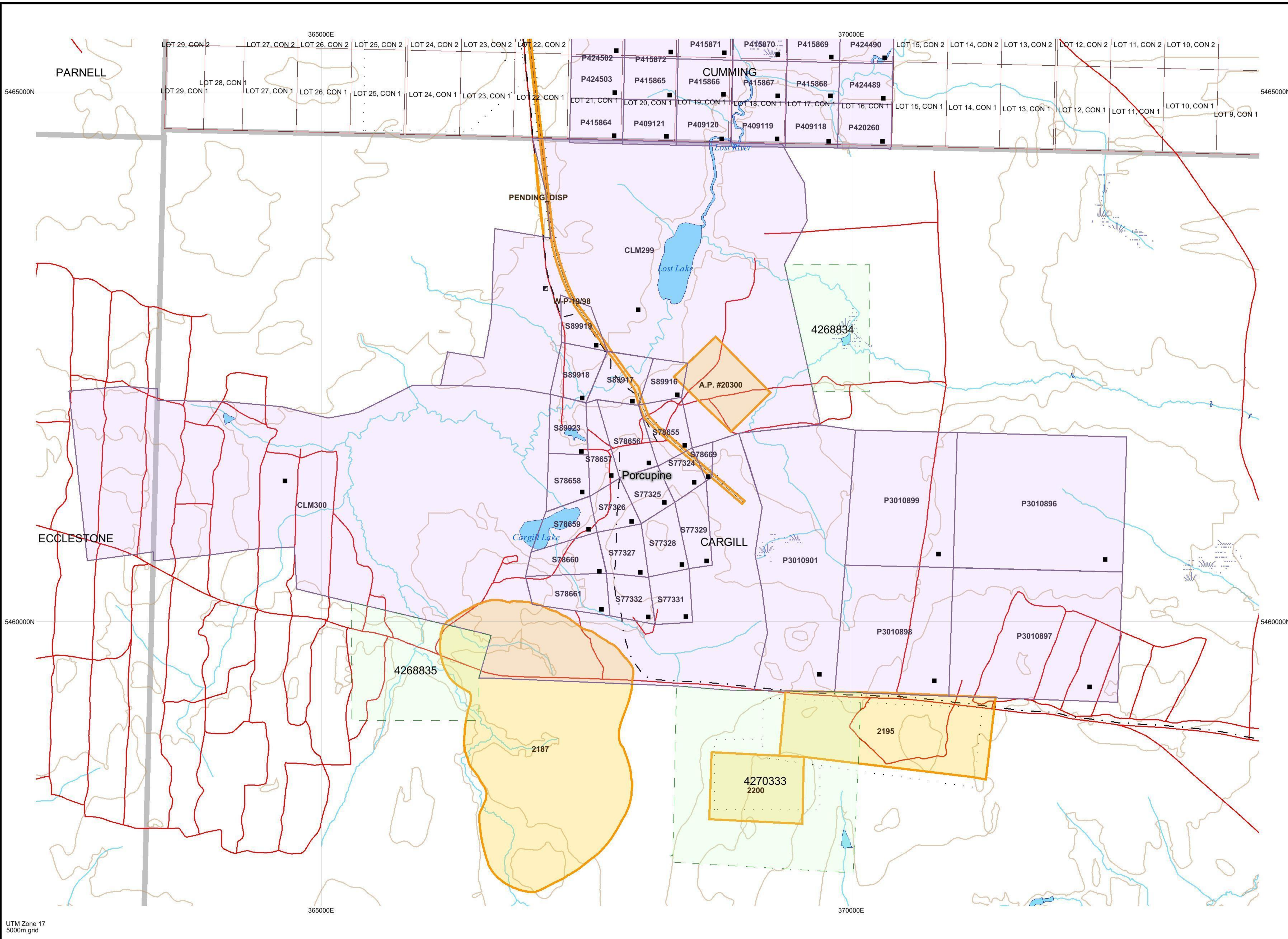
TOWNSHIP / AREA
CARGILL

PLAN
G-0860

ADMINISTRATIVE DISTRICTS / DIVISIONS

Mining Division
Land Titles/Registry Division
Ministry of Natural Resources District

Porcupine
COCHRANE
HEARST

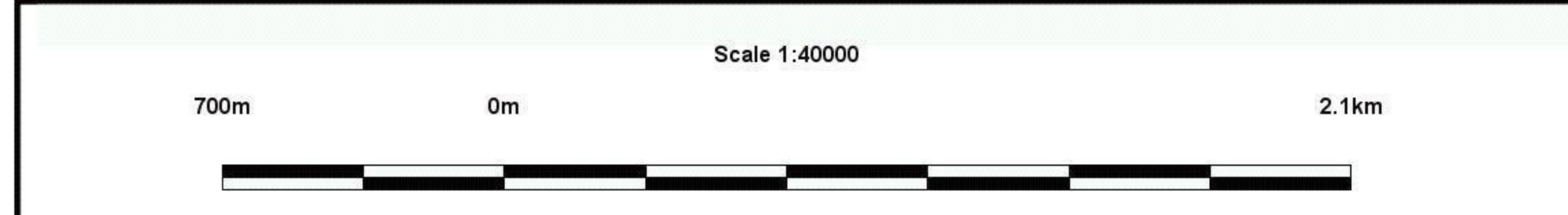
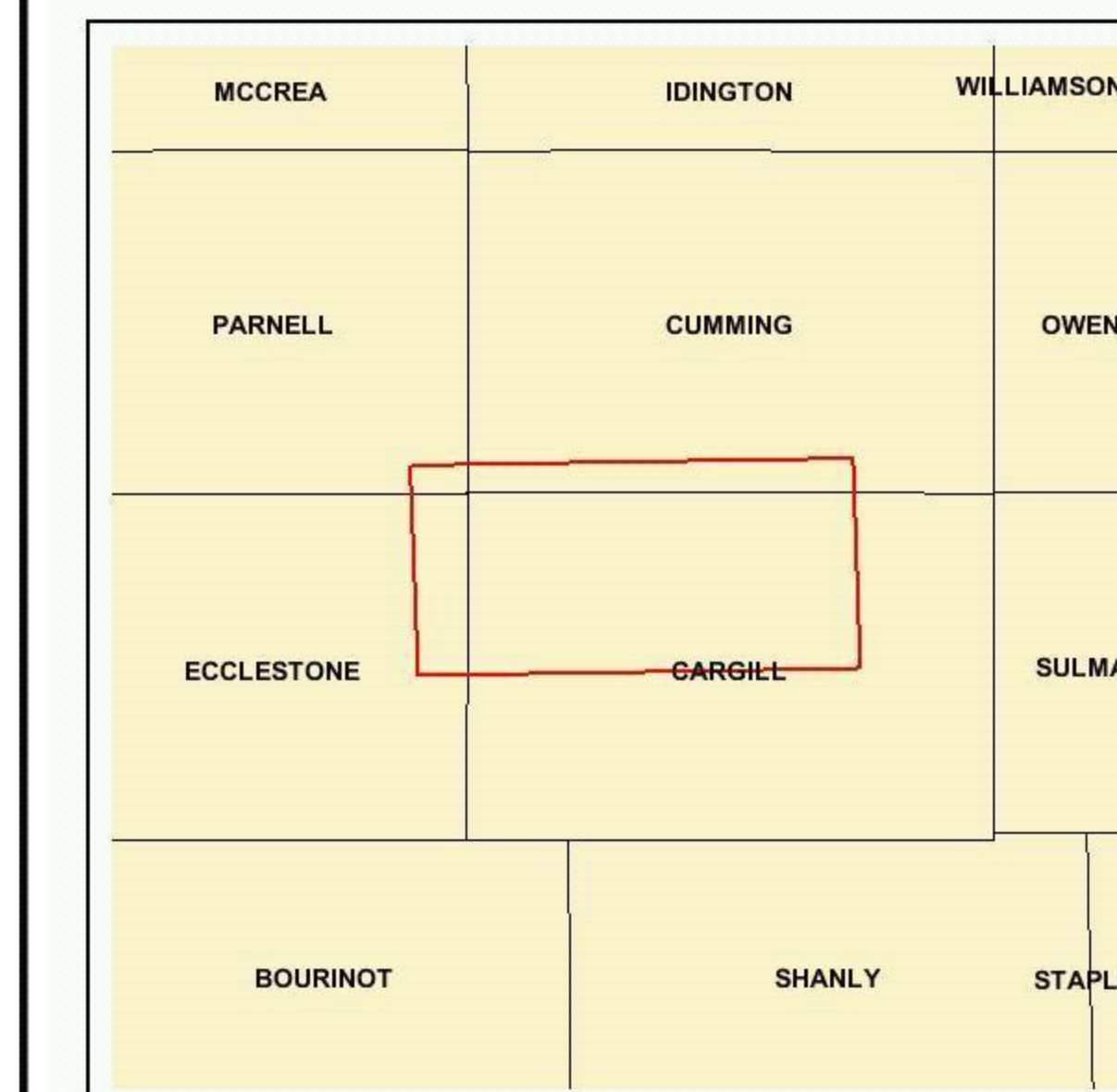


TOPOGRAPHIC

- Administrative Boundaries
- Township
- Concession, Lot
- Provincial Park
- Indian Reserve
- Cliff, Pit & Pile
- Contour
- Mine Shafts
- Mine Headframe
- Railway
- Road
- Trail
- Natural Gas Pipeline
- Utilities
- Tower

Land Tenure

- Freehold Patent**
 - Surface And Mining Rights
 - Surface Rights Only
 - Mining Rights Only
- Leasehold Patent**
 - Surface And Mining Rights
 - Surface Rights Only
 - Mining Rights Only
- Licence of Occupation**
 - Uses Not Specified
 - Surface And Mining Rights
 - Surface Rights Only
 - Mining Rights Only
 - Land Use Permit
 - Order In Council (Not open for staking)
 - Water Power Lease Agreement



LAND TENURE WITHDRAWAL DESCRIPTIONS (list may not be complete)

Identifier	Type	Date	Description
2097	Wsm	Jan 1, 2001	PENDING AGGREGATE PERMIT
2187	Wsm	Jan 1, 2001	PENDING APPLICATION UNDER THE PUBLIC LANDS ACT NOTICE RECEIVED 9 JJ 2 (DUCKS UNLIMITED ECC ESTONE MARSH PROJECT)
2195	Wsm	Jan 1, 2001	AGGREGATE PERMIT NO. 20018
2200	Wsm	Jan 1, 2001	AGGREGATE PERMIT NO. 20026
A.P. #20300	Wsm	Sep 3, 1998	AGGREGATE PERMIT NO. 20300 - Category 11
PENDING_DISP	Wsm	Jul 2, 2002	Pending disposition CL 10936
W-P-19/98	Wsm	Jun 22, 1998	SEC. 35 W-P-19/98 22/06/98 M+S 195150
W-P-91/04	Wsm	Nov 10, 2004	W-P-91/04 M+S withdrawal S.35 Mining Act RSO 1999, November 10, 2004 Click to link to withdrawal order

True North

IMPORTANT NOTICES

Areas under which special regulation, limitations or conditions exist that affect normal prospecting, staking and mineral development activities

None

Those wishing to stake mining claims should consult with the Provincial Mining Recorders' Office of the Ministry of Northern Development and Mines for additional information on the status of the lands shown hereon. This map is not intended for navigational, survey, or land title determination purposes as the information shown on this map is compiled from various sources. Completeness and accuracy are not guaranteed. Additional information may also be obtained through the local Land Titles or Registry Office, or the Ministry of Natural Resources.

The information shown is derived from digital data available in the Provincial Mining Recorders' Office at the time of downloading from the Ministry of Northern Development and Mines web site.

General Information and Limitations

Contact Information:
Provincial Mining Recorders' Office
Wilket Green Miller Centre 933 Ramsey Lake Road
Sudbury ON P3E 6B5
Home Page: www.mndm.gov.on.ca/MNDM/MINES/LANDS/mlsmnpge.htm

Toll Free
Tel: 1 (888) 415-9845 ext 574
Fax: 1 (877) 670-1444

This map may not show unregistered land tenure and interests in land including certain patents, leases, easements, right of ways, flooding rights, licences, or other forms of disposition of rights and interest from the Crown. Also certain land tenure and land uses that restrict or prohibit free entry to stake mining claims may not be illustrated.

Date / Time of Issue: Sun Mar 23 14:06:21 EST 2014

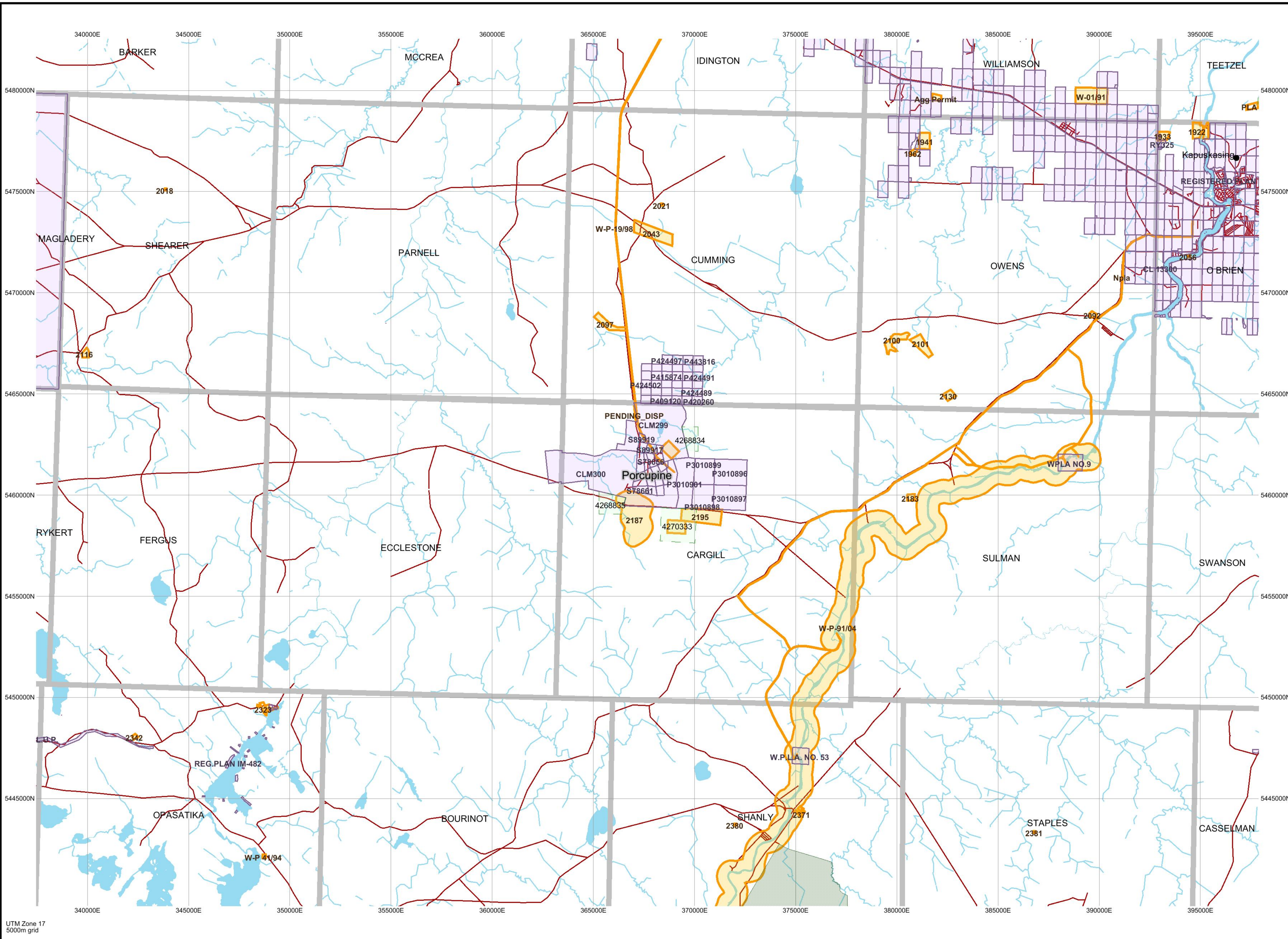
TOWNSHIP / AREA
CARGILL

PLAN
G-0860

ADMINISTRATIVE DISTRICTS / DIVISIONS

Mining Division
Land Titles/Registry Division
Ministry of Natural Resources District

Porcupine
COCHRANE
HEARST

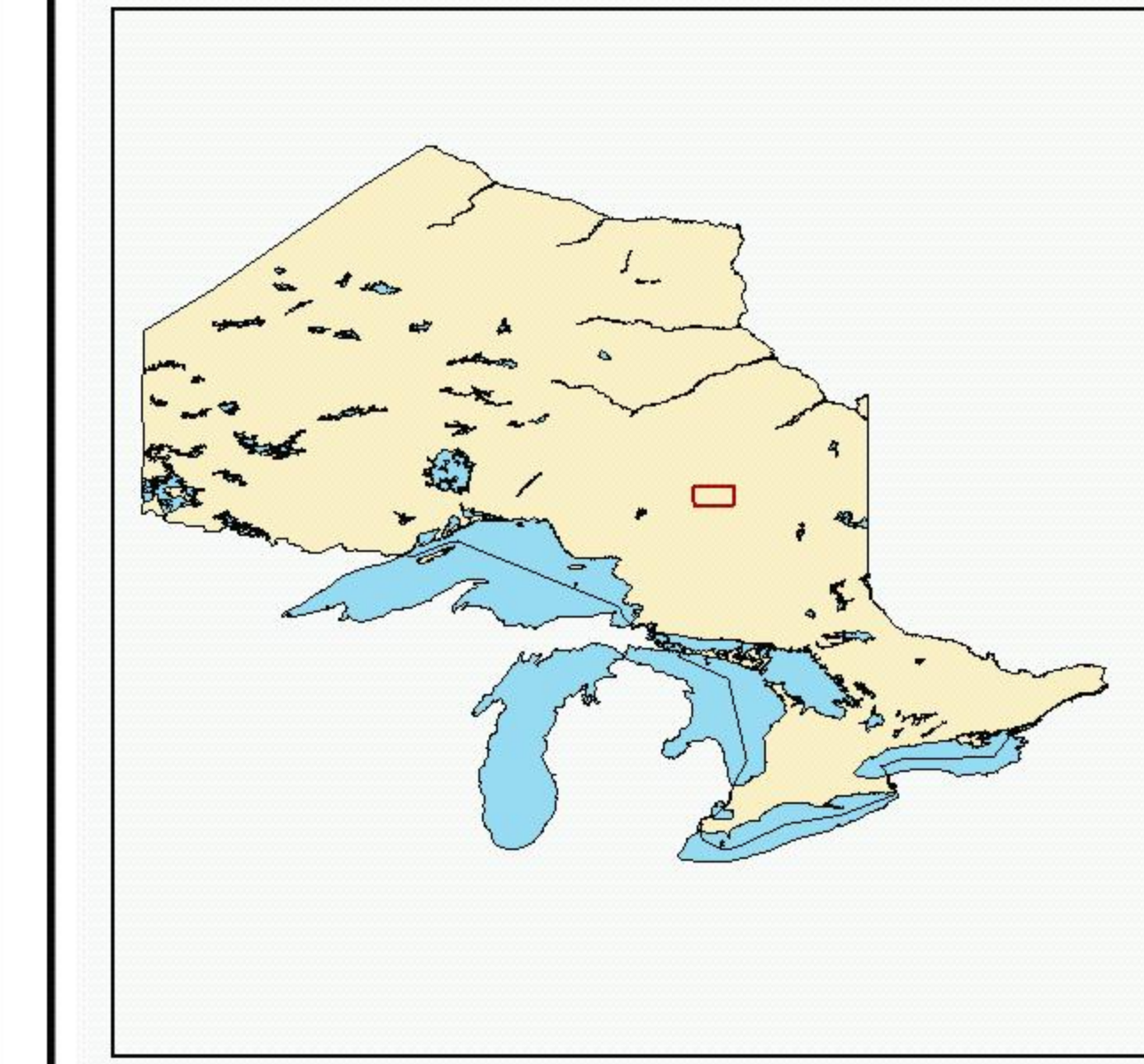


TOPOGRAPHIC

- Administrative Boundaries
- Township
- Concession, Lot
- Provincial Park
- Indian Reserve
- Cliff, Pit & Pile
- Contour
- Mine Shafts
- Mine Headframe
- Railway
- Road
- Trail
- Natural Gas Pipeline
- Utilities
- Tower

Land Tenure

- Freehold Patent
 - Surface And Mining Rights
 - Surface Rights Only
 - Mining Rights Only
- Leasehold Patent
 - Surface And Mining Rights
 - Surface Rights Only
 - Mining Rights Only
- Licence of Occupation
 - Uses Not Specified
 - Surface And Mining Rights
 - Surface Rights Only
 - Mining Rights Only
- Land Use Permit
- Order In Council (Not open for staking)
- Water Power Lease Agreement

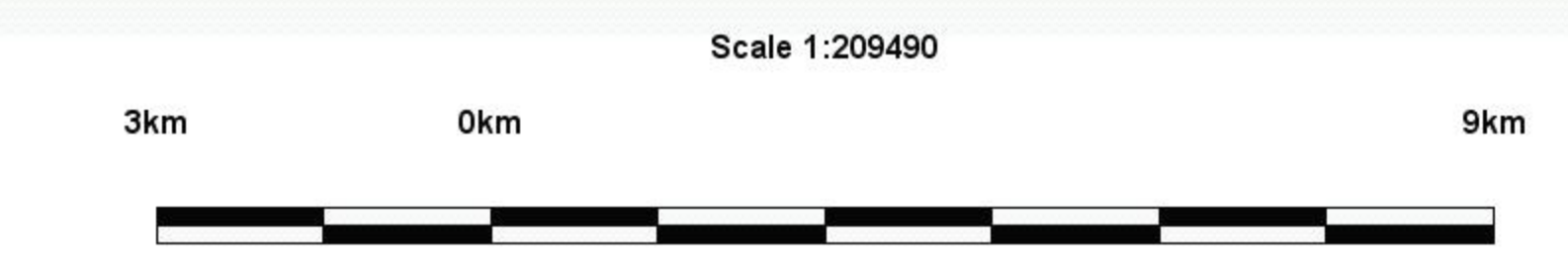


LAND TENURE WITHDRAWALS

- 1234 Areas Withdrawn from Disposition
- Mining Acts Withdrawal Types
 - Surface And Mining Rights Withdrawn
 - Surface Rights Only Withdrawn
 - Mining Rights Only Withdrawn
- Order In Council Withdrawal Types
 - Surface And Mining Rights Withdrawn
 - Surface Rights Only Withdrawn
 - Mining Rights Only Withdrawn

IMPORTANT NOTICES

- Ns



True North



UTM Zone 17
5000m grid

Those wishing to stake mining claims should consult with the Provincial Mining Recorders' Office of the Ministry of Northern Development and Mines for additional information on the status of the lands shown hereon. This map is not intended for navigational, survey, or land title determination purposes as the information shown on this map is compiled from various sources. Completeness and accuracy are not guaranteed. Additional information may also be obtained through the local Land Titles or Registry Office, or the Ministry of Natural Resources.

General Information and Limitations

Contact Information:
Provincial Mining Recorders' Office
Wilket Green Miller Centre 933 Ramsey Lake Road
Sudbury ON P3E 6B5
Home Page: www.mndm.gov.on.ca/MNDM/MINES/LANDS/mlsmnpge.htm

Toll Free
Tel: 1 (888) 415-9845 ext 574
Fax: 1 (877) 670-1444

Map Datum: NAD 83
Projection: UTM (6 degree)
Topographic Data Source: Land Information Ontario
Mining Land Tenure Source: Provincial Mining Recorders' Office

This map may not show unregistered land tenure and interests in land including certain patents, leases, easements, right of ways, flooding rights, licences, or other forms of disposition of rights and interest from the Crown. Also certain land tenure and land uses that restrict or prohibit free entry to stake mining claims may not be illustrated.

The information shown is derived from digital data available in the Provincial Mining Recorders' Office at the time of downloading from the Ministry of Northern Development and Mines web site.