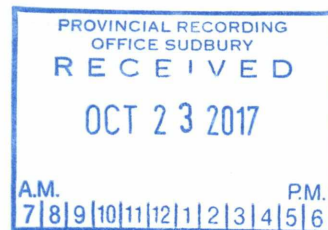


We are committed to providing [accessible customer service](#).  
If you need accessible formats or communications supports, please [contact us](#).

Nous tenons à améliorer [l'accessibilité des services à la clientèle](#).  
Si vous avez besoin de formats accessibles ou d'aide à la communication, veuillez [nous contacter](#).



2-58265

**TREELINED LAKE GRAPHITE PROPERTY**

**TREELINED LAKE AREA – PLAN G-2651**

**KENORA MINING DIVISION, ONTARIO**

for

**PERRY L. HEATHERINGTON**

Prepared By

**ALASDAIR J.M. MOWAT**

**Technical Mining Engineer**

(---1---)

**TABLE OF CONTENTS**

	PAGE(S)
1/. Body of the Report .....	3 - 5

**LIST OF FIGURES**

Fig. 1: Treelined Lake Graphite Occurrence Location Map

Fig. 2: P. L. Heatherington Claim Group

**LIST OF TABLES**

Table 1: Workorder Confirmation for TB17215996 (2 pages)

Table 2: Certificate TB17215996 (7 pages)

## **TREELINED LAKE GRAPHITE PROPERTY**

### **OWNERSHIP:**

The Treelined Lake Graphite Property is located in the Treelined Lake Area (G-2651), Kenora Mining Division of Northwestern Ontario (Fig. 1). The property is 100% owned by Perry L. Heatherington which is comprised of a contiguous block of 6 claims (59 units or 944 ha). Fig. 2. The property was acquired for its economic potential to host flake graphite.

### **LOCATION:**

The property is located approximately 60 kilometres north of the City of Kenora at 50.30 degrees N latitude by 94.46 degrees W longitude (GPS Zone 15, NAD 83, 396159mE by 5572841mN). Fig. 1.

### **ACCESS:**

Access to the project site is by road and trail. One takes the Kenora to Redditt highway north from Kenora to the English River gravelled road. This north road takes one to the Treelined Trail which goes to the trench workings of the Graphite Occurrence a travelled one way distance of 84 km (76 km by truck and 8 km by quad).

### **REGIONAL GEOLOGY:**

The Treelined Graphite Property is hosted within a suite of Archean age high-grade metamorphic Metasedimentary rocks (dominantly schists and gneisses) enclosed in Granitoid rocks within the English River Subprovince. The Property lies close to a major crustal boundary between the Archean English River Gneiss Belt to the north and the Archean Winnipeg River Pluton to the south. In subject property, the Separation Lake Greenstone Belt lies along the southern border of the English River Subprovince. The Treelined Graphite Property is located a short distance north of the Separation Lake Greenstone Belt.

### **PROPERTY GEOLOGY:**

The Graphite Property hosts a previously identified zone of graphite-bearing paragneisses (altered quartzites to arkose to greywacke sedimentary rocks). The flake graphite in the paragneisses is considered to represent the re-crystallization at the temperatures and pressures of amphibolites to granulite grade metamorphism of pre-existing organic carbon in the original sedimentary rocks.

Field work by the Ontario Geological Survey (OGS) and the claim holder have shown the graphite-bearing units trend +/- N 60 degrees E, dipping steeply to the southeast to vertical, exposing a zone in the order of 75 metres to 100 metres wide by trenching and sampling.

Previous exploration activities by past owner Mega Graphite Inc in the Fall of 2012 consisted of prospecting; mechanical and manual stripping/washing; geological mapping, and rock sampling (grab and diamond saw channeling). The graphite/carbon assays returned values up to 11% carbon.

The Treelined Graphite Zone has been trenched over a strike length of about 600 metres at +/- 100 metre spaced cross-cutting trenches. The zone appears to be open along strike in both southwest to northeast directions. Combining the known strike length of 600 metres with the 75 – 100 metre widths would suggest the presence of a graphite deposit with a significant tonnage potential that, at least in part, could be amenable to open pit mining.

Although, it is quite unbelievable that the zone has not been drill tested, two preliminary mineral dressing studies have been conducted to determine if a suitable graphite concentrate could be produced. Both scoping studies were positive.

#### **PROPERTY VISIT:**

The property was visited on September 28<sup>th</sup>, 2017. The purpose of the visit was to review the ground status of the project site and to collect a rock sample (GPS - 396140mE, 5572850mN). The sample was removed north-west of the main graphite zone just passed the old shack on mining claim 4224468 (Fig. 2).

The section of the English River Road north of the iron bridge is reasonable passable with however, passable with a quad – previously 4x4 truck accessible up to the abandon cabin.

#### **SAMPLE ANALYTICAL PROCEDURES:**

The field rock sample # TL-01-12 was boxed and mailed from Kenora to ALS Geochemistry in Thunder Bay, Ontario for preparation and analyses. A copy of the two page work order TB17215996 (Table 1) is attached explaining the analytical processes.

#### **SAMPLE ANALYTICAL RESULTS:**

The seven page Table 2, is a copy of the certificate of analysis for the submitted sample TL-01-



17. The main point is the carbon assayed 2.12%. This sample was removed north of the primary zone, the zone parallels the lake. Also, the organic carbon occurs in quartz rich matrix – 81.9% (Table 2).

**CONCLUSION:**

The Treelined Graphite Property has the potential to host a carbon deposit of economic significance. To validate this observation, the following programs are recommended:

1/. Surprisingly, the graphite zone and property has never been drill tested. A minimum pass of 1,500m NQ core including core assaying is recommended.

2/. As this 1<sup>st</sup> phase of drilling is conducted, the following exploration activities continue with evaluating the rest of the claim holdings:

-prospecting and sampling;

-geological mapping and sampling;

-magnetometer and electromagnetic geophysical surveys, and

-geochemistry.

The estimated cost of this 1<sup>st</sup> phase of the exploration programme is \$2 million.

Reported Dated: October 22<sup>nd</sup>, 2017

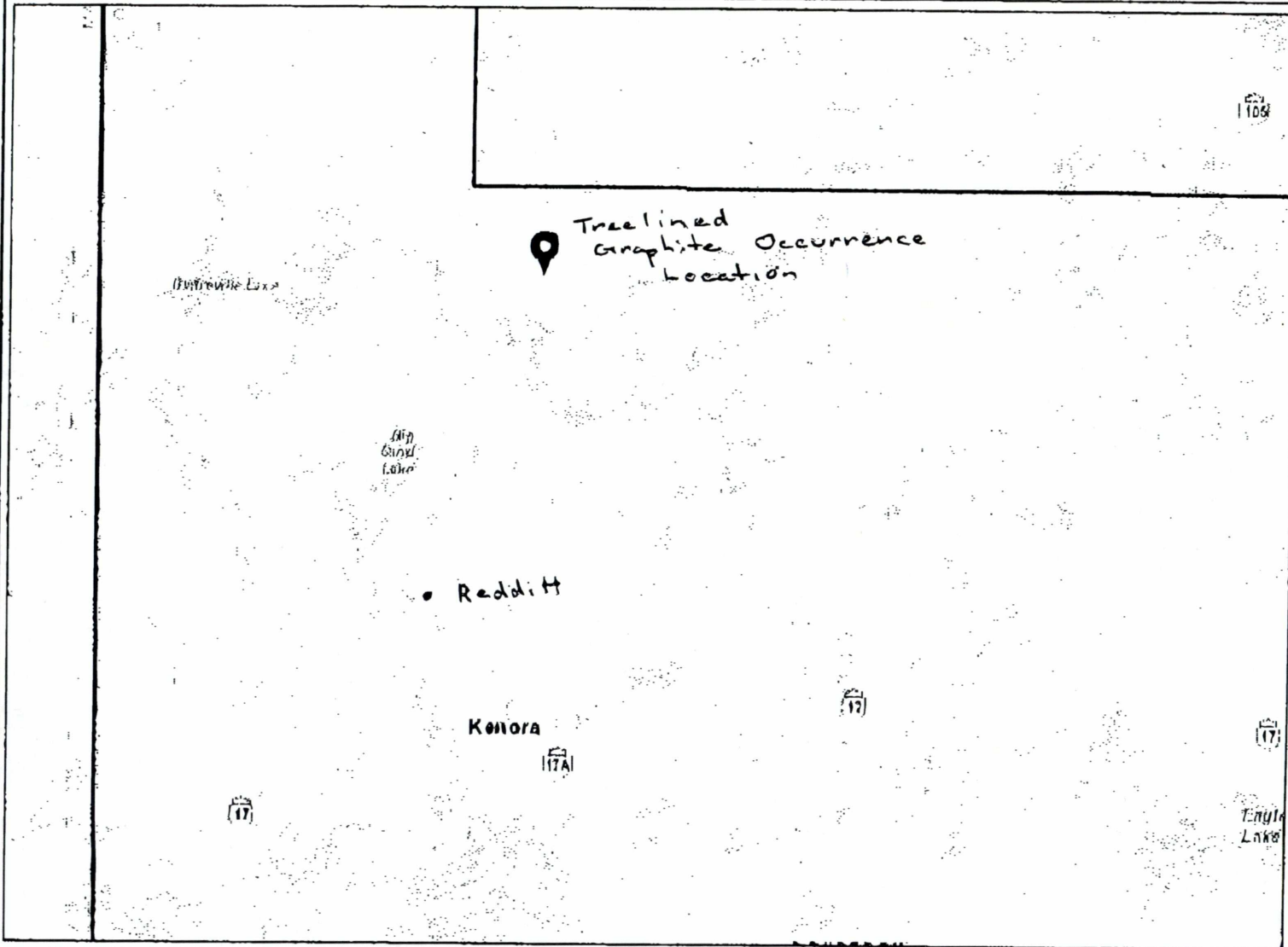
Report by: Alasdair J.M. Mowat  
Technical Mining Engineer



MINISTRY OF NORTHERN DEVELOPMENT AND MINES  
CLAIMaps

# TREELINED LAKE GRAPHITE OCCURRENCE LOCATION MAP

**Notes:**  
TREELINED LAKE AREA (G-2651), Kenora Mining  
Division, ON  
P. L. Heatherington Mining Claim Property



## Legend

- Administration Boundaries**
  - Mining Divisions
  - Provincial Geographic District
  - Townships and Areas
  - UTM Grid
  - Geographic Lot Fabric
  - Other Federal Land
- Mineral Tenure Grid**
  - OLI/EG Tenure Grid
- All Locations**
  - Withdrawal
  - Active
- Unpatented Claims**
  - Provenance
  - Pending
- Disposition**
  - Disposition
- Disposition Symbols**
  - ⊙ Camp
  - ⊙ Disposition Unknown/Pending
  - ⊙ Freshold Patent Mining Rights Only
  - ⊙ Freshold Patent Surface Rights Only
  - ⊙ Freshold Patent Surface and Mining Rights
  - ⊙ Land Use Permit
  - ⊙ Leasehold Patent Mining Rights Only
  - ⊙ Leasehold Patent Surface Rights Only
  - ⊙ Leasehold Patent Surface and Mining Rights
  - ⊙ License of Occupation Mining Use Only
  - ⊙ License of Occupation Surface Use Only
  - ⊙ License of Occupation Surface and Mining Rights
  - ⊙ License of Occupation Uses Not Specified
  - ⊙ Other in Council
  - ⊙ Tenure
  - ⊙ WPLA
- Geology Layers**
  - ⊙ AMIS Sites
  - ⊙ AMIS Features
  - ⊙ Drill Holes
  - ⊙ Mineral Occurrences

Fig: 1

0 37.66 km

Projection: Web Mercator



The Ontario Ministry of Northern Development and Mines shall not be liable in any way for the use of, or reliance upon, this map or any information on this map. This map should not be used for navigation, a plan of survey, routes, nor locations.

Imagery Copyright Notices: Ontario Ministry of Natural Resources and Forestry; NASA Landsat Program; First Base Solutions Inc.; Aero-Photo (1981) Inc.; DigitalGlobe Inc.; U.S. Geological Survey.

© Queen's Printer for Ontario, 2016

© Copyright for Ontario Parcel data is held by Queen's Printer for Ontario and its licensors and may not be reproduced without permission.

Oct 23 2017 03:14pm P010

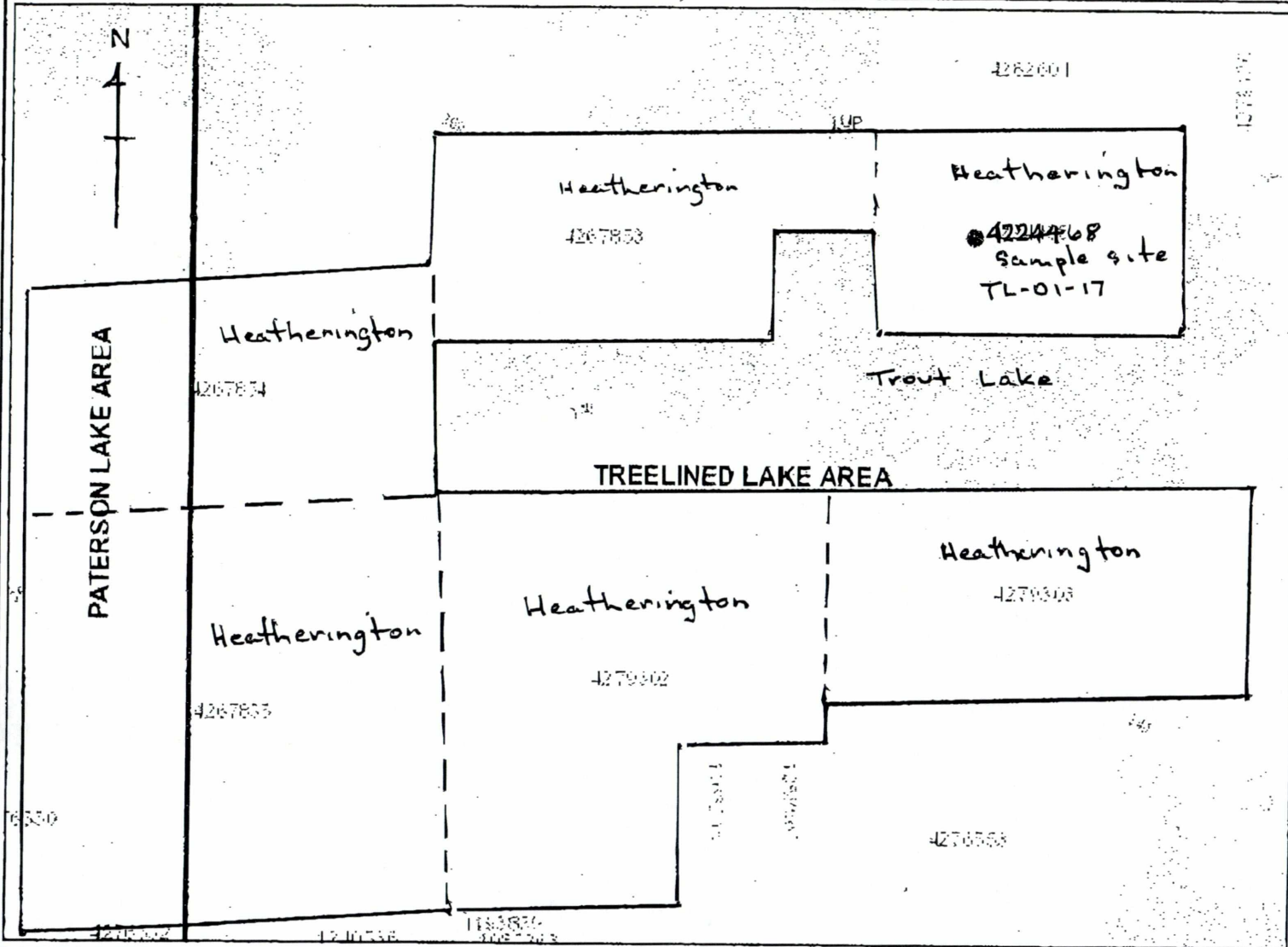


MINISTRY OF NORTHERN DEVELOPMENT AND MINES  
CLAIMaps

# P. L. HEATHERINGTON CLAIM GROUP

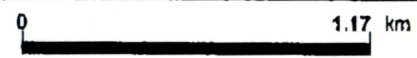
Notes:

TREELINED LAKE GRAPHITE PROPERTY. THE BLUE DOT INDICATES THE AREA OF THE MAIN OCCURRENCE ON CLAIM 4224468.



- ### Legend
- Administration Boundaries
    - ▭ Mining Divisions
    - ▭ Resident Geographic District
    - ▭ Townships and Areas
    - ▭ UTM Grid
    - ▭ Geographic Lot Fabric
    - ▭ Other Federal Land
  - Mineral Tenure Grid
    - ▭ OMTG Tenure Grid
  - Allanations
    - ▨ Hydrofract
    - ▨ Hecton
  - Unregistered Claim
    - ▨ Active
    - ▨ Reconsidered
    - ▨ Pending
  - Disposition
    - ▨ Disposition
  - Disposition Symbols
    - ⊙ Camp
    - ⊙ Disposition Unknown/Pending
    - ⊙ Freehold Patent Mining Rights Only
    - ⊙ Freehold Patent Surface Rights Only
    - ⊙ Freehold Patent Surface and Mining Rights
    - ⊙ Land Use Permit
    - ⊙ Leasehold Patent Mining Rights Only
    - ⊙ Leasehold Patent Surface Rights Only
    - ⊙ Leasehold Patent Surface and Mining Rights
    - ⊙ License of Occupation Mining Use Only
    - ⊙ License of Occupation Surface Use Only
    - ⊙ License of Occupation Surface and Mining Rights
    - ⊙ License of Occupation Uses Not Specified
    - ⊙ Order in Council
    - ⊙ Power
    - ⊙ WPLA
  - Geology Layers
    - ⊙ All IS Strata
    - ⊙ All IS Features
    - ⊙ Drill Holes
    - ⊙ Mineral Occurrences

Fig. 2



Projection: Web Mercator



The Ontario Ministry of Northern Development and Mines shall not be liable in any way for the use of, or reliance upon, this map or any information on this map. This map should not be used for navigation, a plan of survey, routes, nor locations.

Imagery Copyright Notices: Ontario Ministry of Natural Resources and Forestry; NASA Landsat Program; First Base Solutions Inc.; Aéro-Photo (1961) Inc.; DigitalGlobe Inc.; U.S. Geological Survey.

© Copyright for Ontario Parcel data is held by Queen's Printer for Ontario and its licensors and may not be reproduced without permission.

© Queen's Printer for Ontario, 2018

Oct 23 2017 03:15pm

P011





TABLE 1  
**WORKORDER  
 CONFIRMATION FOR  
 TB17215996**

Print date Oct 06, 2017

Client Code AMOOMFAA

Page 1 of 2

To:

Alasdair Mowat  
 Alasdair Mowat  
 Suite 1- 35 Paterson  
 Kenora ON  
 Canada P9N 3S1

WO Billing address:

Alasdair Mowat  
 Alasdair Mowat  
 Suite 1- 35 Paterson  
 Kenora ON  
 Canada P9N 3S1

---

**WORKORDER DISTRIBUTION**

<u>REPORT DESCRIPTION</u>	<u>DESTINATION PERSON</u>	<u>DELIVERY</u>
Certificate of analysis	Alasdair Mowat	Email
Invoice	Alasdair Mowat	Email
QC Certificate	Alasdair Mowat	Email
Work Order	Alasdair Mowat	Email
ALS Minerals Standard XLS Format with C	Alasdair Mowat	Email

Samples submitted by:

Project: TREELINED  
 P. O. #:  
 Sample Type: Rock  
 Date Received: October 05, 2017  
 Sample Origin: Ontario, Canada

Total Samples Received: 1

Pulp Disposition: Dump after 90 Days  
 Reject Disposition: Dump  
 First Sample Description: TL- 01- 17  
 Carrier and Waybill: CDA POST 0451835000508474

---

**ANALYTICAL WORK REQUESTED:**

**PREP**

1	CRU- 31	PREP- 31	Fine crushing - 70% <2mm
1	LOG- 22	PREP- 31	Sample login - Rcd w/o BarCode
1	PUL- 31	PREP- 31	Pulverize split to 85% <75 um
1	SPL- 21	PREP- 31	Split sample - riffle splitter
1	WEI- 21		Received Sample Weight

Analytes Requested: Recvd Wt.



# WORKORDER CONFIRMATION FOR TB17215996

Print date Oct 06, 2017  
Client Code AMOOMFAA  
Page 2 of 2

## ANALYTICAL

- 1 C- IR07 CCP- PKG01 Total Carbon (Leco)  
Analytes Requested: C
- 1 ME- 4ACD81 CCP- PKG01 Base Metals by 4- acid dig.  
Analytes Requested: Ag,Cd,Co,Cu,Li,Mo,Ni,Pb,Sc,Zn  
IF Ag >= 100 ppm THEN RUN METHOD Ag- OG62  
IF Co >= 10000 ppm THEN RUN METHOD Co- OG62  
IF Cu >= 10000 ppm THEN RUN METHOD Cu- OG62  
IF Mo >= 10000 ppm THEN RUN METHOD Mo- OG62  
IF Ni >= 10000 ppm THEN RUN METHOD Ni- OG62  
IF Pb >= 10000 ppm THEN RUN METHOD Pb- OG62  
IF Zn >= 10000 ppm THEN RUN METHOD Zn- OG62
- 1 ME- ICP06 CCP- PKG01 Whole Rock Package - ICP- AES  
Analytes Requested: Al2O3,BaO,CaO,Cr2O3,Fe2O3,K2O,MgO,MnO,Na2O,P2O5,SiO2,SrO,TiO2
- 1 ME- MS42 CCP- PKG01 Up to 34 elements by ICP- MS  
Analytes Requested: As,Bi,Hg,In,Re,Sb,Se,Te,Tl
- 1 ME- MS81 CCP- PKG01 Lithium Borate Fusion ICP- MS  
Analytes Requested:  
Ba,Ce,Cr,Cs,Dy,Er,Eu,Ga,Gd,Ge,Hf,Ho,La,Lu,Nb,Nd,Pr,Rb,Sm,Sn,Sr,Ta,Tb,Th,Tm,U,V,W,Y,Yb,Zr
- 1 OA- GRA05 CCP- PKG01 Loss on Ignition at 1000C  
Analytes Requested: LOI
- 1 S- IR08 CCP- PKG01 Total Sulphur (Leco)  
Analytes Requested: S
- 1 TOT- ICP06 CCP- PKG01 Total Calculation for ICP06  
Analytes Requested: Total

## MISCELLANEOUS ITEMS:

- 1 BAT- 01 Administration Fee

This Workorder Confirmation is issued to detail how the sample submission has been logged in the ALS system. Please review the details herein to ensure accuracy and advise ALS immediately of any changes required.