

We are committed to providing [accessible customer service](#).  
If you need accessible formats or communications supports, please [contact us](#).

Nous tenons à améliorer [l'accessibilité des services à la clientèle](#).  
Si vous avez besoin de formats accessibles ou d'aide à la communication, veuillez [nous contacter](#).

2 · 58379

PROSPECTING REPORT FOR CYPRESS DEVELOPMENT CORP.

1082545 B. C. Ltd. Group of Claims - Dome Township

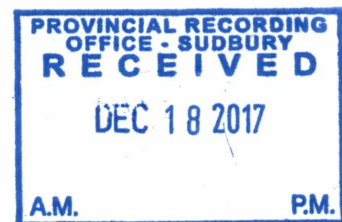


TABLE of CONTENTS

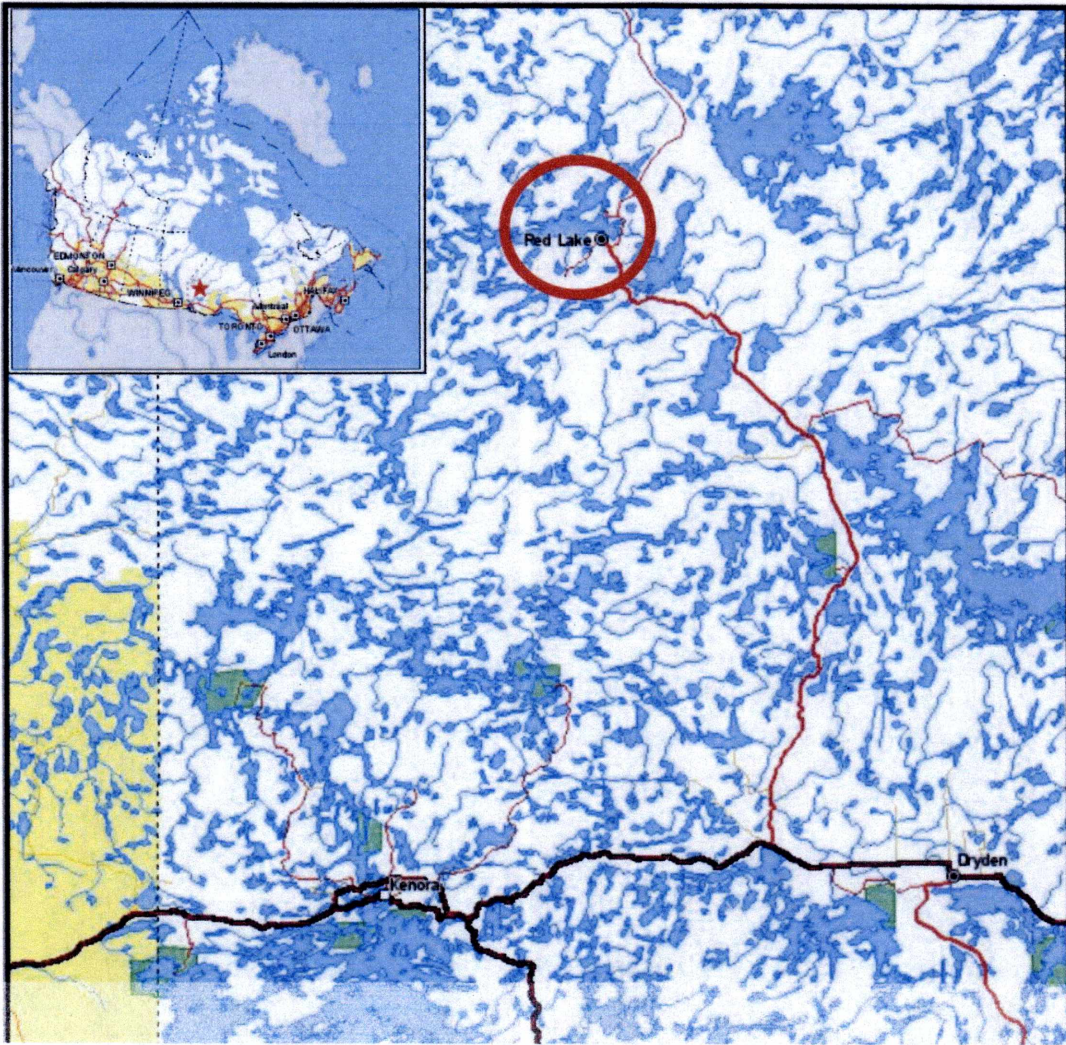
- 1 - INTRODUCTION
- 2 - LOCATION MAPS
- 3 - GEOLOGICAL SETTING
- 4 - PROSPECTING ( Sketch Plans and Descriptions )
- 5 - DATA ANALYSIS
- 6 - CONCLUSIONS
- 7 - RECOMMENDATIONS
- 8 - STATEMENT of QUALIFICATIONS

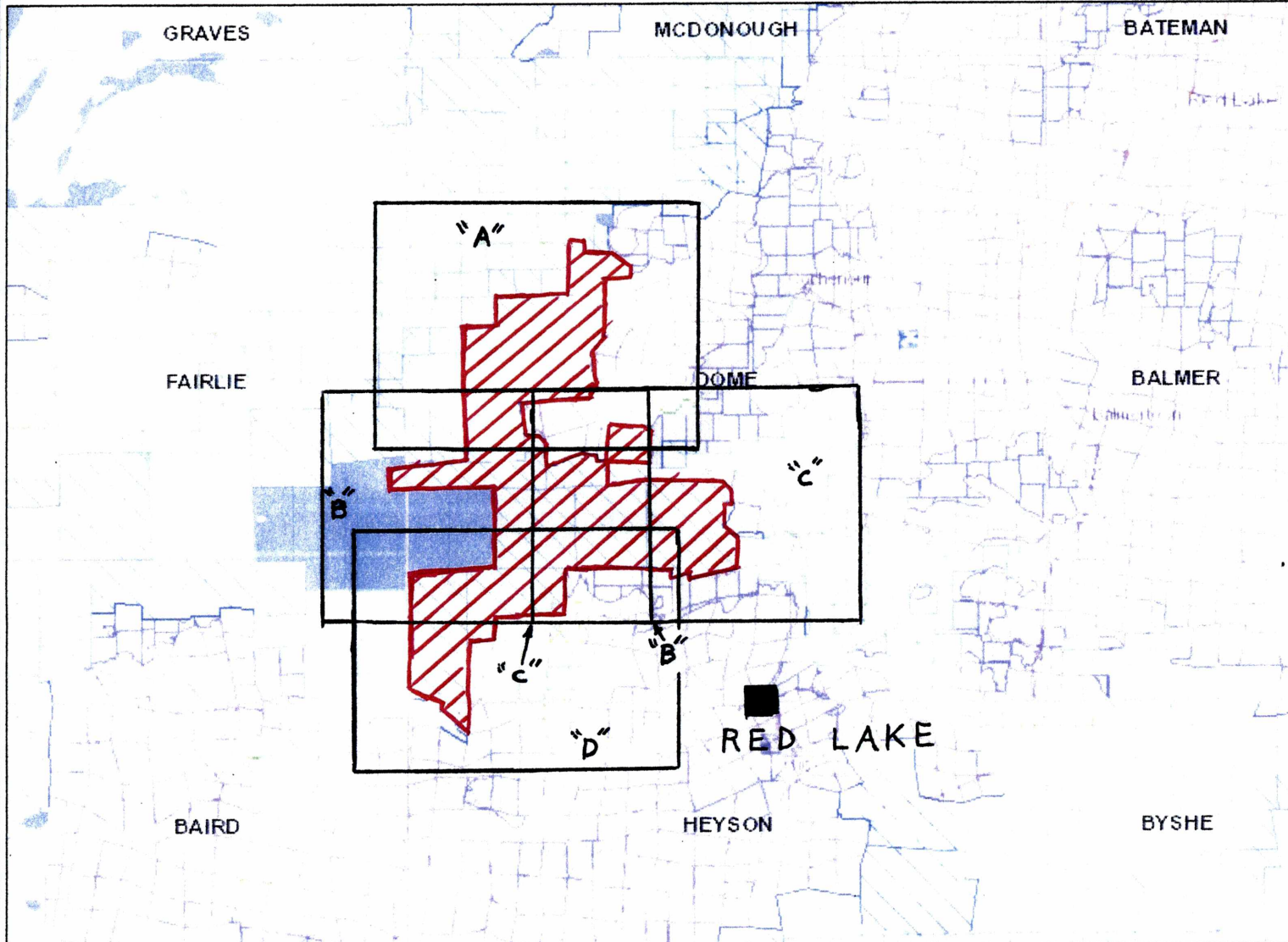
APPENDIX " A " - CERTIFICATES of ANALYSIS

## INTRODUCTION

1082545 B. C. Ltd. claims encompass an area that cover McKenzie Island's western half from north to south and extend under water ( Red Lake ) from east to west including several islands and across land to St. Paul Bay of Red Lake ( see accompanying maps for property outline ). The main focus was on McKenzie Isl. proper with secondary focus to King Isl. and Turner Isl. This property is situated in the prolific Red Lake Gold Mining Camp and thus far has received comparatively little exploration.

Access to McKenzie Isl. is by boat or ferry in the summer or ice road in the winter.





**Legend**

- Administration Boundaries**
  - Mining Divisions
  - Resident Geologist District
  - Townships and Areas
  - UTM Grid
  - Geographic Lot Fabric
  - Other Federal Land
- Mineral Tenure Grid**
  - CMTG Tenure Grid
- Alienations**
  - Withdrawal
  - Notice
- Unpatented Claim**
  - Active
  - Reconciled
  - Pending
- Disposition**
  - Disposition
- Disposition Symbols**
  - Camp
  - Disposition Unknown/Pending
  - Freehold Patent Mining Rights Only
  - Freehold Patent Surface Rights Only
  - Freehold Patent Surface and Mining Rights
  - Land Use Permit
  - Leasehold Patent Mining Rights Only
  - Leasehold Patent Surface Rights Only
  - Leasehold Patent Surface and Mining Rights
  - License of Occupation Mining Use Only
  - License of Occupation Surface Use Only
  - License of Occupation Surface and Mining Rights
  - License of Occupation Uses Not Specified
  - Order in Council
  - Tower
  - WPLA
- Geology Layers**
  - AMIS Sites
  - AMIS Features
  - Drill Holes
  - Mineral Occurrences

- PROPERTY  
OUTLINE  
1082545 B.C.  
LTD.  
"A", "B", "C", "D"  
TO FOLLOW



Projection: Web Mercator

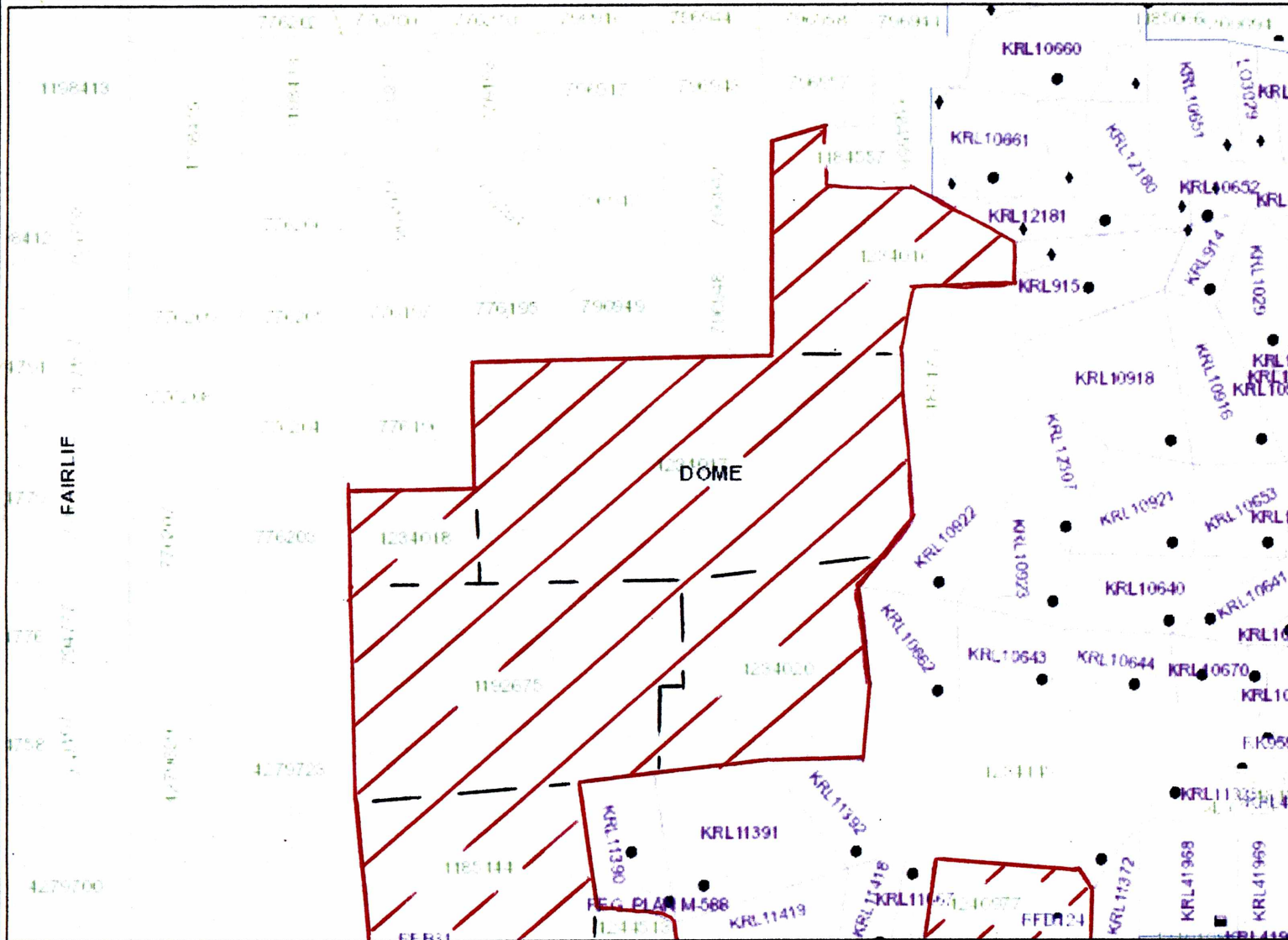


The Ontario Ministry of Northern Development and Mines shall not be liable in any way for the use of, or reliance upon, this map or any information on this map. This map should not be used for: navigation, a plan of survey, routes, nor locations.

© Queen's Printer for Ontario, 2016

Imagery Copyright Notices: Ontario Ministry of Natural Resources and Forestry; NASA Landsat Program; First Base Solutions Inc.; Aéro-Photo (1961) Inc.; DigitalGlobe Inc.; U.S. Geological Survey.

© Copyright for Ontario Parcel data is held by Queen's Printer for Ontario and its licensors and may not be reproduced without permission.



### Legend

**Administration Boundaries**

- Mining Divisions
- Resident Geologist District
- Townships and Areas
- UTM Grid
- Geographic Lot Fabric
- Other Federal Land

**Mineral Tenure Grid**

- OMTG Tenure Grid

**Alienations**

- Withdrawal
- Notice

**Unpatented Claim**

- Active
- Reconciled
- Pending

**Disposition**

- Disposition

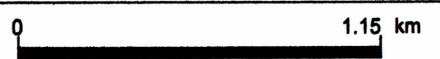
**Disposition Symbols**

- Camp
- Disposition Unknown/Pending
- Freehold Patent Mining Rights Only
- Freehold Patent Surface Rights Only
- Freehold Patent Surface and Mining Rights
- Land Use Permit
- Leasehold Patent Mining Rights Only
- Leasehold Patent Surface Rights Only
- Leasehold Patent Surface and Mining Rights
- License of Occupation Mining Use Only
- License of Occupation Surface Use Only
- License of Occupation Surface and Mining Rights
- License of Occupation Uses Not Specified
- Order in Council
- Tower
- WPLA

**Geology Layers**

- AMIS Sites
- AMIS Features
- Dirt Holes
- Mineral Occurrences

**PROPERTY OUTLINE**  
1082545 B.C. LTD.

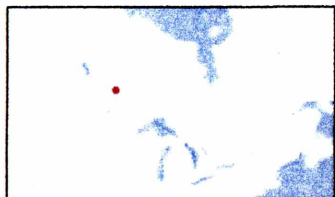


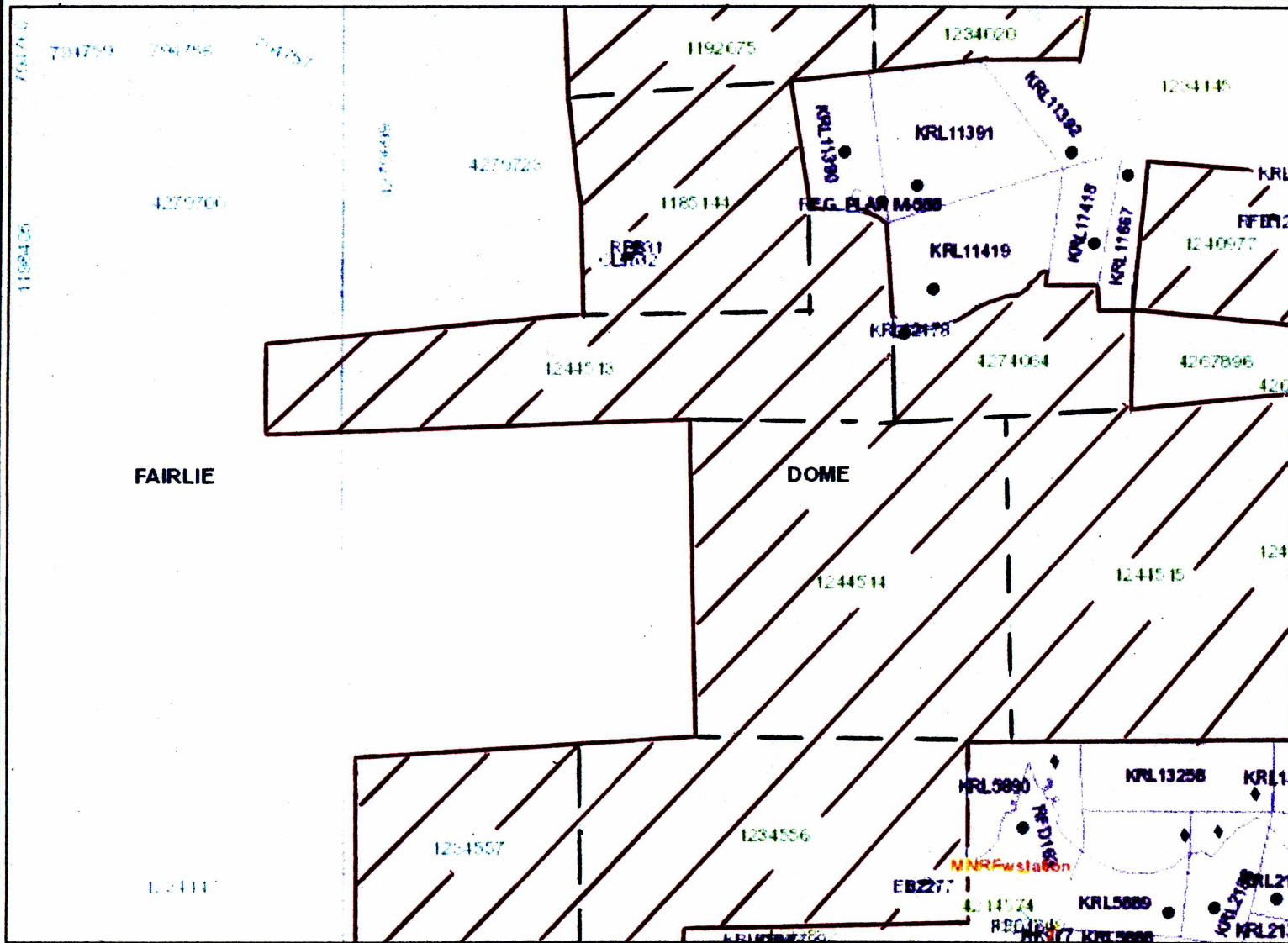
Projection: Web Mercator



The Ontario Ministry of Northern Development and Mines shall not be liable in any way for the use of, or reliance upon, this map or any information on this map. This map should not be used for: navigation, a plan of survey, routes, nor locations.

Imagery Copyright Notices: Ontario Ministry of Natural Resources and Forestry; NASA Landsat Program; First Base Solutions Inc.; Aéro-Photo (1961) Inc.; DigitalGlobe Inc.; U.S. Geological Survey.





- ### Legend
- Administration Boundaries**
    - Mining Divisions
    - Resident Geoblog District
    - Townships and Areas
    - UTM Grid
    - Geographic Lot Parts
    - Other Federal Land
  - Mineral Tenure Grid**
    - ONTG Tenure Grid
  - Alterations**
    - Withdrawal
    - Holds
  - Unpatented Claims**
    - Active
    - Recorded
    - Pending
    - Disposition
  - Disposition Symbols**
    - Camp
    - Disposition Unknown/Pending
    - Freehold Patent Mining Rights Only
    - Freehold Patent Surface Rights Only
    - Freehold Patent Surface and Mining Rights
    - Land Use Permit
    - Leasehold Patent Mining Rights Only
    - Leasehold Patent Surface Rights Only
    - Leasehold Patent Surface and Mining Rights
    - License of Occupation Mining Use Only
    - License of Occupation Surface Use Only
    - License of Occupation Surface and Mining Rights
    - License of Occupation Uses Not Specified
    - Order in Council
    - Tower
    - WPLA
  - Geology Layers**
    - AMIS Sites
    - AMIS Features
    - Drill Holes
    - Mineral Occurrences

- PROPERTY OUTLINE  
1082545 B.C. LTD.



Projection: Web Mercator

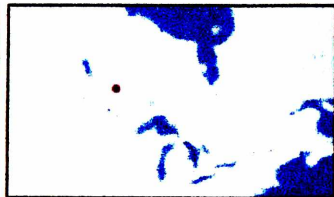


The Ontario Ministry of Northern Development and Mines shall not be liable in any way for the use of, or reliance upon, this map or any information on this map. This map should not be used for: navigation, a plan of survey, routes, nor locations.

Imagery Copyright Notices: Ontario Ministry of Natural Resources and Forestry; NASA Landsat Program; First Base Solutions Inc.; Aéro-Photo (1981) Inc.; DigitalGlobe Inc.; U.S. Geological Survey.

© Queen's Printer for Ontario, 2016

© Copyright for Ontario Parcel data is held by Queen's Printer for Ontario and its licensors and may not be reproduced without permission.





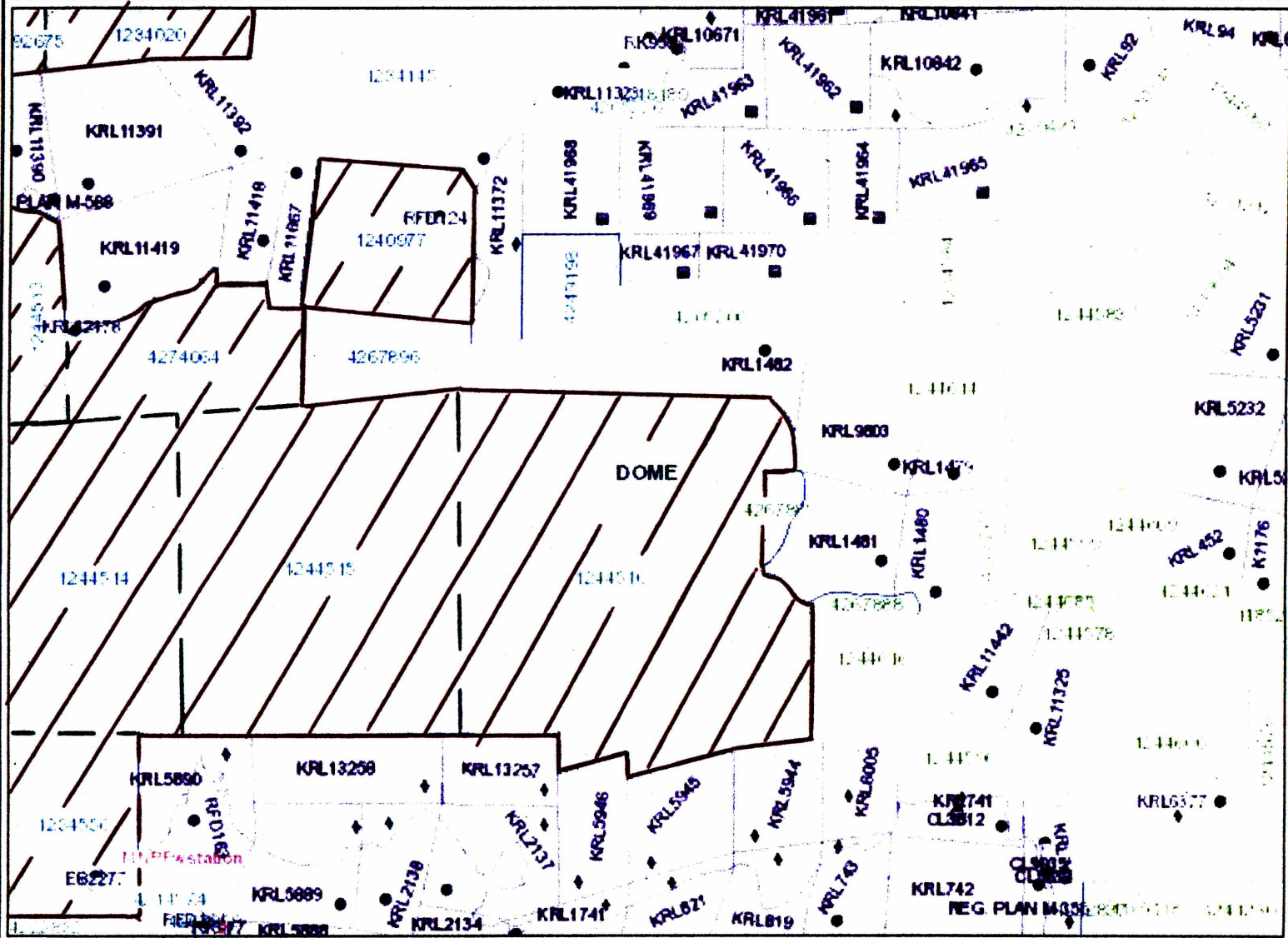


MINISTRY OF NORTHERN DEVELOPMENT AND MINES  
CLAIMaps

Enter map title

Notes:  
Enter map notes

"C"



### Legend

**Administration Boundaries**

- Mining Divisions
- Resident Geological District
- Townships and Areas
- UTM Grids
- Geographic Lot Plans
- Other Federal Land

**Mineral Tenure Gold**

- OMTG Tenure Grid

**Alterations**

- Withdrawal
- Notice

**Unpatented Claims**

- Active
- Recorded
- Pending
- Disposition

**Disposition Symbols**

- Camp
- Disposition Unknown/Pending
- Freehold Patent Mining Rights Only
- Freehold Patent Surface Rights Only
- Freehold Patent Surface and Mining Rights
- Land Use Permit
- Leasehold Patent Mining Rights Only
- Leasehold Patent Surface Rights Only
- Leasehold Patent Surface and Mining Rights
- License of Occupation Mining Use Only
- License of Occupation Surface Use Only
- License of Occupation Surface and Mining Rights
- License of Occupation Use Not Specified
- Order in Council
- Tower
- WPLA

**Geology Layers**

- AM18 Sites
- AM18 Features
- Drill Holes
- Mineral Occurrences

- PROPERTY OUTLINE  
1082545 B.C. LTD.



Projection: Web Mercator

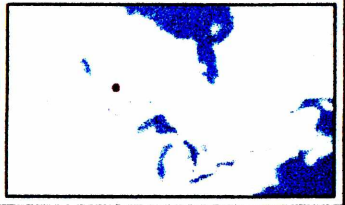


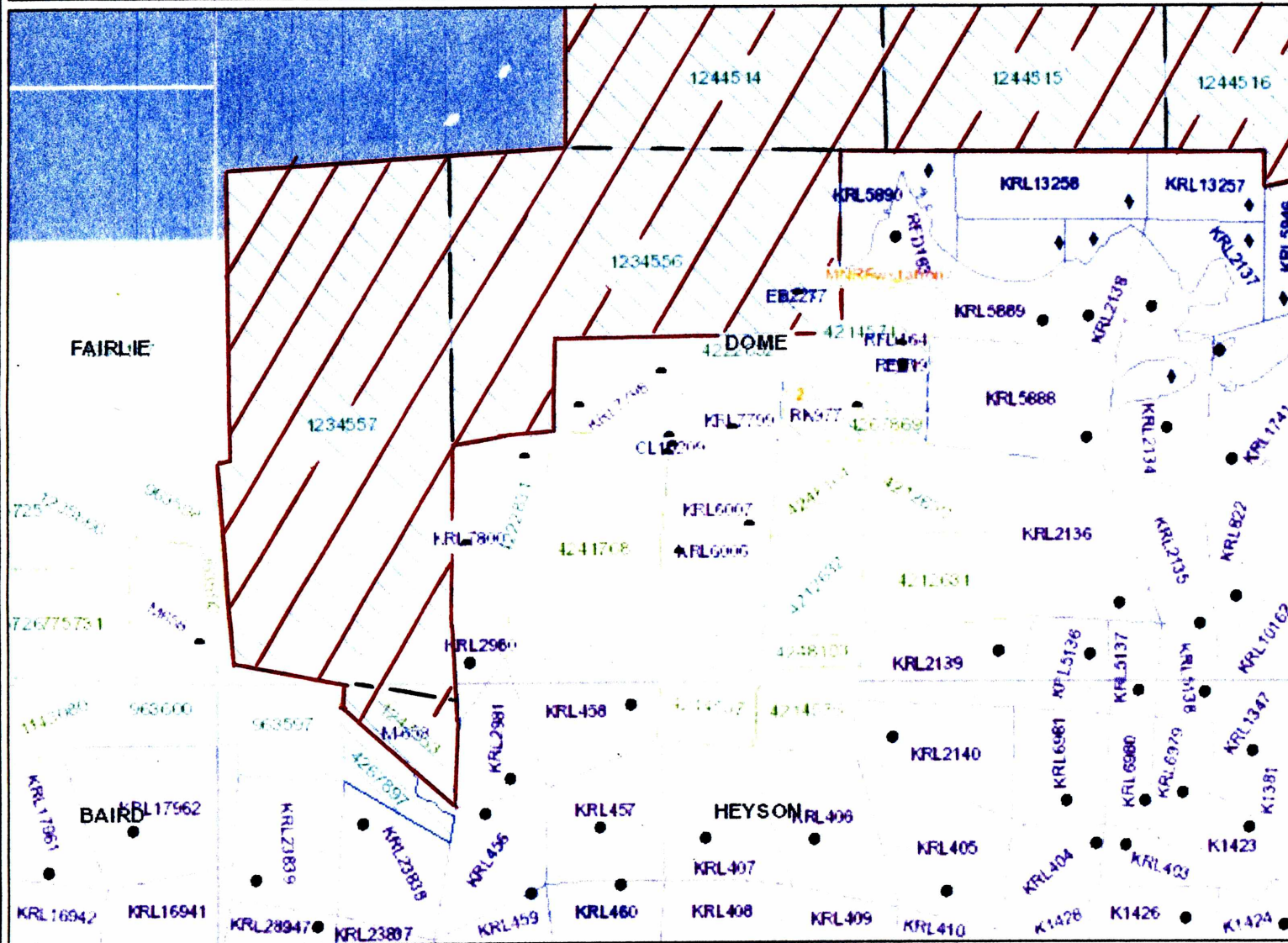
The Ontario Ministry of Northern Development and Mines shall not be liable in any way for the use of, or reliance upon, this map or any information on this map. This map should not be used for: navigation, a plan of survey, routes, nor locations.

Imagery Copyright Notices: Ontario Ministry of Natural Resources and Forestry; NASA Landsat Program; First Base Solutions Inc.; Aéro-Photo (1981) Inc.; DigitalGlobe Inc.; U.S. Geological Survey.

© Queen's Printer for Ontario, 2016

© Copyright for Ontario Parcel data is held by Queen's Printer for Ontario and its licensors and may not be reproduced without permission.





### Legend

**Administration Boundaries**

- Mining Divisions
- Resident Geologist District
- Townships and Areas
- UTM Grid
- Geographic Lot Fabric
- Other Federal Land

**Mineral Tenure Grid**

- OMTG Tenure Grid

**Alienations**

- Withdrawal
- Notice

**Unpatented Claims**

- Active
- Reconciled
- Pending

**Disposition**

- Disposition

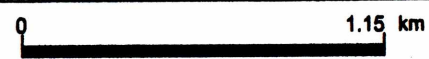
**Disposition Symbols**

- Camp
- Disposition Unknown/Pending
- Freehold Patent Mining Rights Only
- Freehold Patent Surface Rights Only
- Freehold Patent Surface and Mining Rights
- Land Use Permit
- Leasehold Patent Mining Rights Only
- Leasehold Patent Surface Rights Only
- Leasehold Patent Surface and Mining Rights
- License of Occupation Mining Use Only
- License of Occupation Surface Use Only
- License of Occupation Surface and Mining Rights
- License of Occupation Uses Not Specified
- Order in Council
- Tower
- WPLA

**Geology Layers**

- AMIS Sites
- AMIS Features
- Drill Holes
- Mineral Occurrences

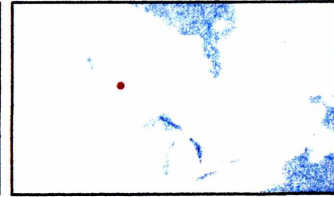
**PROPERTY OUTLINE**  
1082545 B.C. LTD.



Projection: Web Mercator

The Ontario Ministry of Northern Development and Mines shall not be liable in any way for the use of, or reliance upon, this map or any information on this map. This map should not be used for: navigation, a plan of survey, routes, nor locations.

Imagery Copyright Notices: Ontario Ministry of Natural Resources and Forestry; NASA Landsat Program; First Base Solutions Inc.; Aéro-Photo (1961) Inc.; DigitalGlobe Inc.; U.S. Geological Survey.



## GEOLOGICAL SETTING

The Red Lake greenstone belt is situated in the western portion of the Uchi Subprovince of the Superior Province in Northwestern Ontario. The geology is a typical Archean granite/greenstone combination of east-west ( generally ) trending volcanics, sedimentary and synvolcanic which in turn were intruded by subsequent granitoids. The host rocks of the Red Lake Greenstone belt average 3.0 Ga, with the main episode of gold mineralization occurring around 2.7 Ga. It is accepted that three episodes of significant plutonism emplaced dioritic, lamprophyre and feldspathic/quartz porphyry dikes and granitic stocks into the volcanic greenstones and the surrounding batholiths.

The northern section of the property on McKenzie Isl. is dominated by welded tuff ( in various stages ) with a carbonate/marble and argillite/wacke units trending NE/SW along the north west side of McKenzie Isl.

On the magnetic contour map provided herein, there is one dominant high domain crossing McKenzie Isl. from the SE and in a counter clockwise direction crosses the island to the west. This is the main contact area with the Dome Stock ( to the south ) and the Welded Tuff ( to the north ) and has been intruded by diorite and ultramafic ( mettagabbro ) volcanics with accompanying stress zones, faulting, shearing and infill veining/alteration zones. These stress zones also extend extensively into the Dome Stock opening passage ways for migrating gold bearing fluids to deposit in-situ.

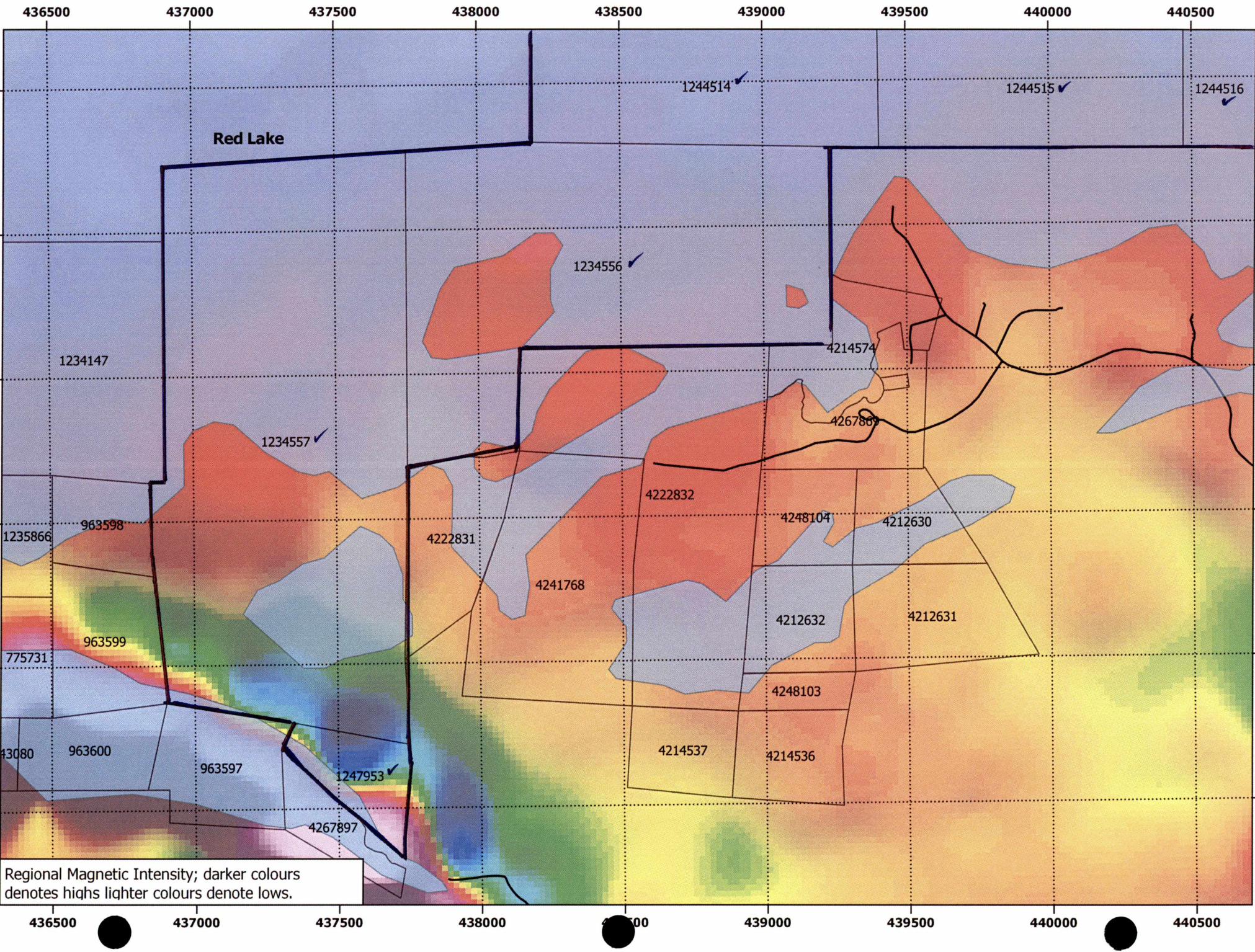
One such vein is described in this report.

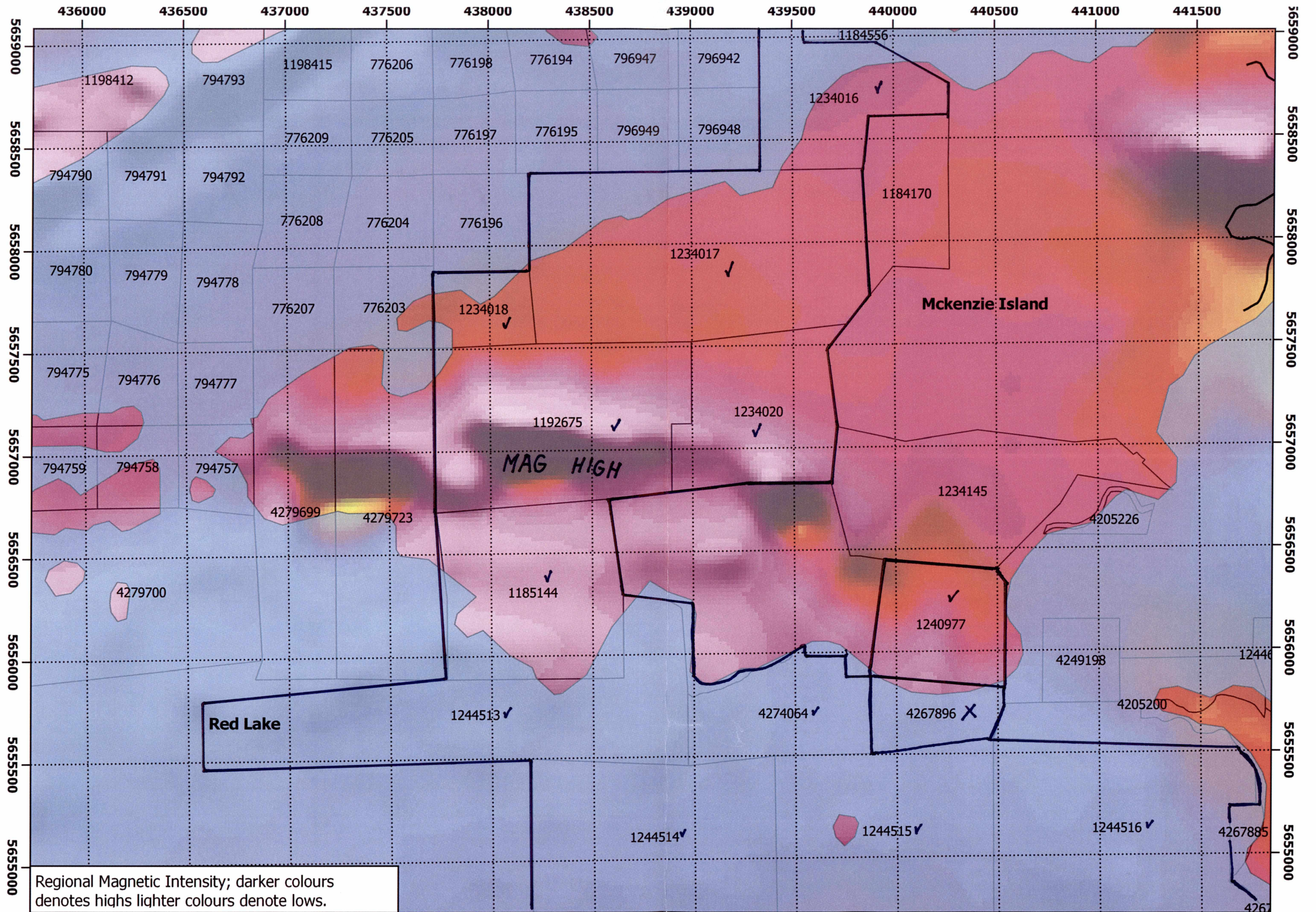
## PROSPECTING

### Sketch Plans and Descriptions

Prospecting was undertaken primarily on McKenzie Isl. and on the SW side of the claim group. In several cases old trench's were cleared/excavated by hand and sampled by hand tools. Emphasis was placed on getting as good a true representative chip/grab sample as possible, with measured sketches and GPS points used to accurately map the sites.

This report shall progress in sequence by the sample numbers/ map sketches of the areas prospected preceded by two magnetic contour maps for further reference.





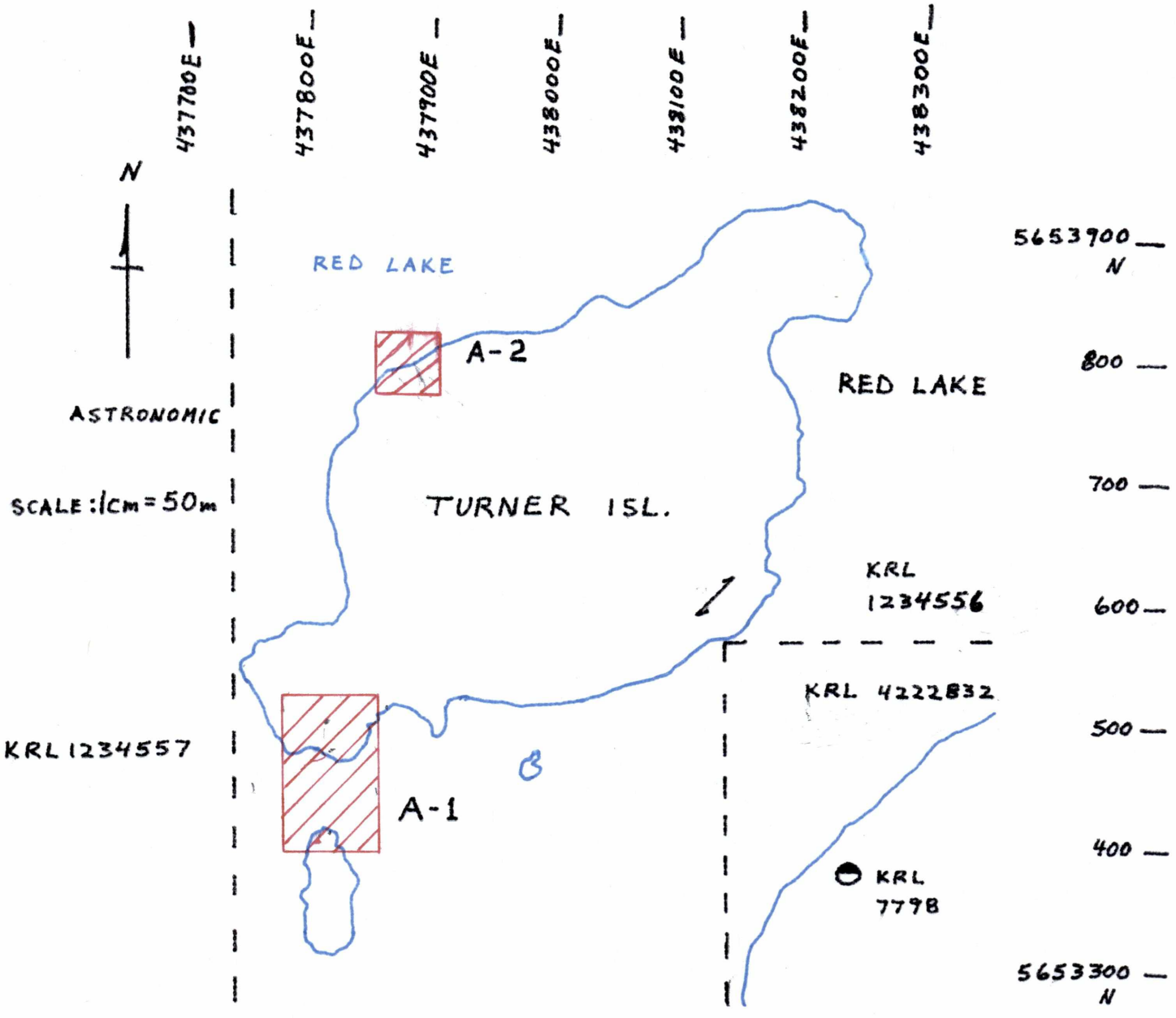
Regional Magnetic Intensity; darker colours denotes highs lighter colours denote lows.

**MAG HIGH**

**Mckenzie Island**

**Red Lake**

4267



LOCATION MAP "A"

- LEGEND:
- SAMPLING AREA
  - STAKED CLAIM
  - SHORE LINE
  - KRL-0000 CLAIM NUMBER
  - SURFACE PATENT

000000E/0000000N - UTM NAD 83

SKETCH A-1

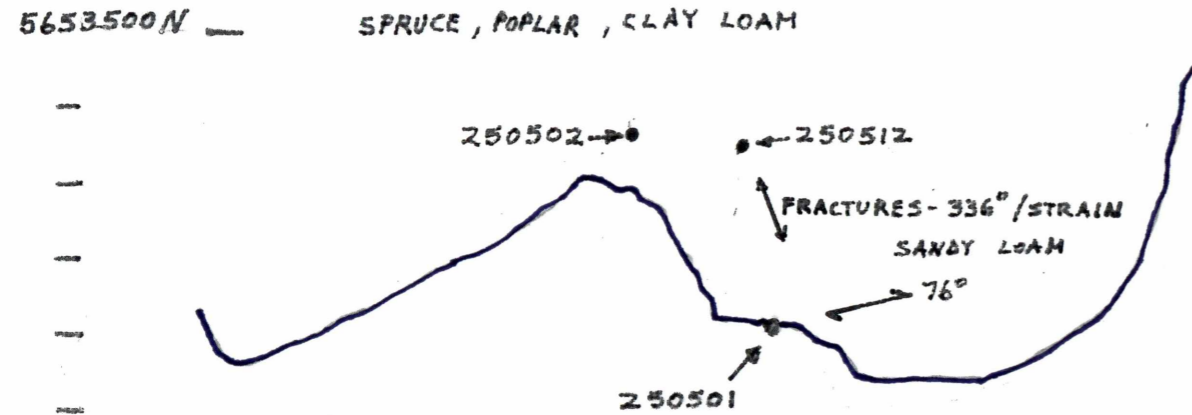
Samples 250501, 250502 and 250512 were taken on the South West side of Turner Isl. ( KRL 1234556 ) and returned low anomalous values in gold. The samples exhibited some gossan staining and contained small amounts of pyrite with some weak carbonate, silicification and shearing in the Dome stock.

However, on a small island to the south of the west end of Turner Isl. a value of .223 PPM Au/tonne was recovered from a mineralized ultramafic dyke. It exhibited some shearing as well as the altered granite flanking the dyke to the west with a little carbonate and minor pyrite.



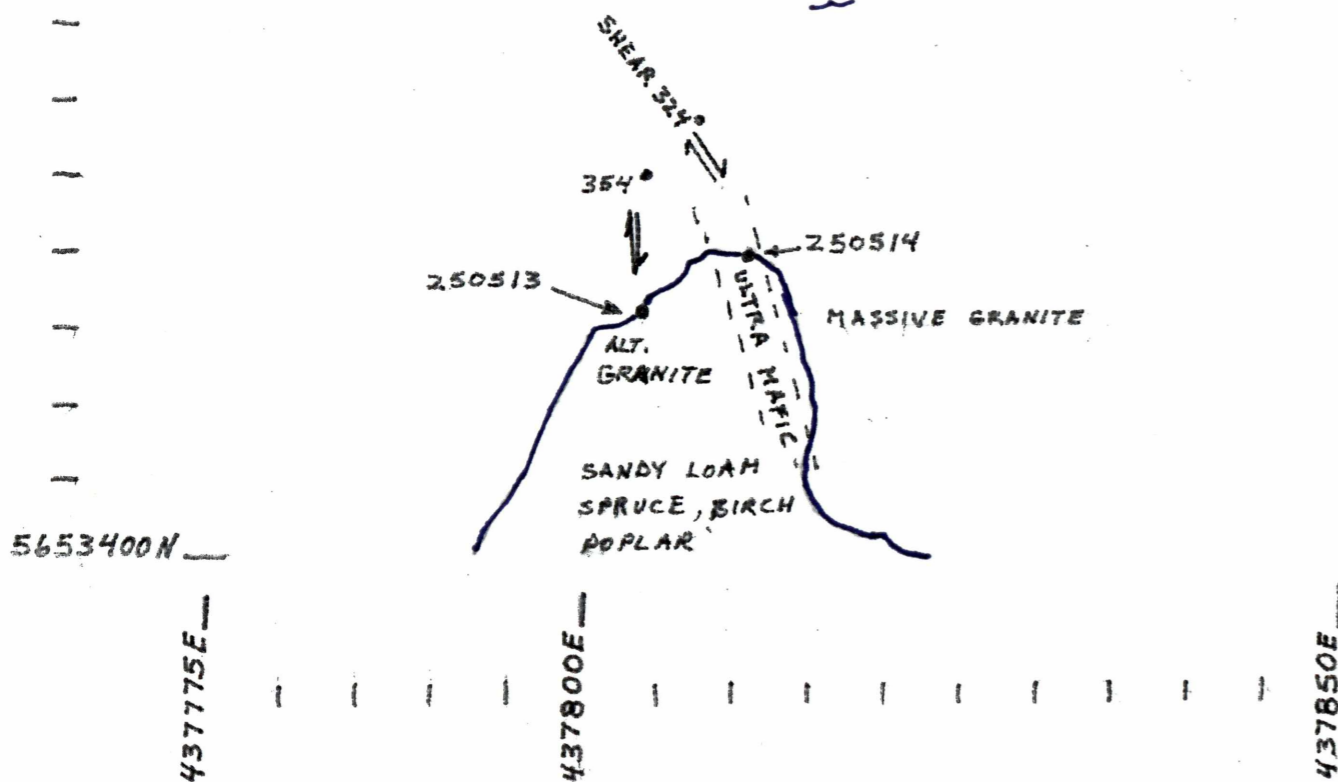
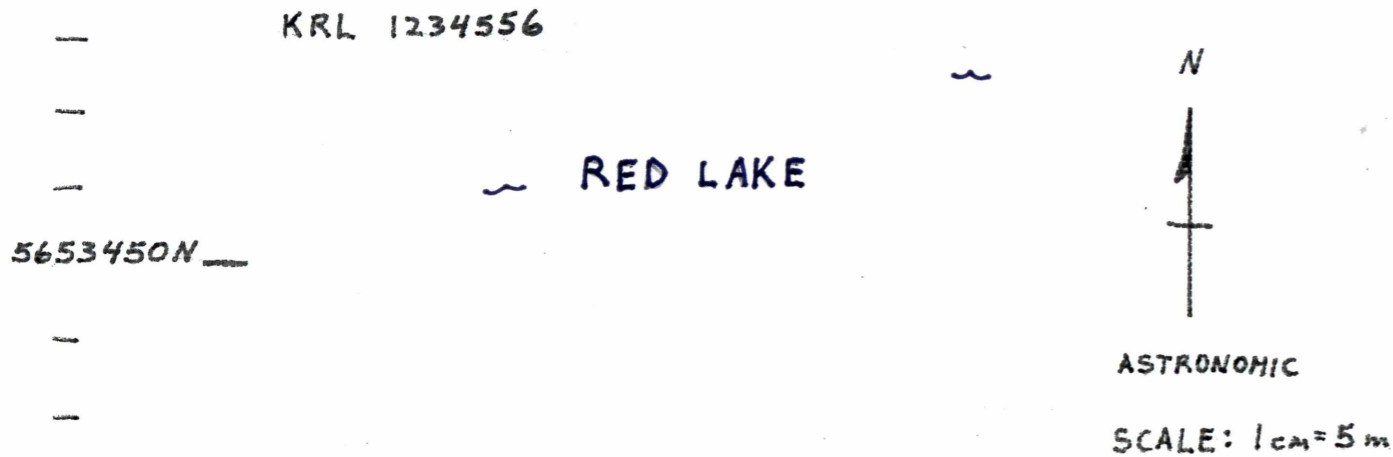
# SKETCH A-1

TURNER ISL.



- SAMPLE -
- 250501 - .087 PPM Au - GRANITE, MINOR Py, carb, silicification
  - 250502 - .021 PPM Au - GRANITE, MINOR Py, carb, qtz eyes
  - 250512 - .037 PPM Au - GRANITE, ALT./SLIGHT SHEAR 354°, minor py, QTZ EYES
  - 250513 - <.005 PPM Au - GRANITE, SLIGHT STRAIN 354°, RUSTY, QTZ EYES
  - 250514 - .223 PPM Au - ULTRA MAFIC, minor py, shear 324°

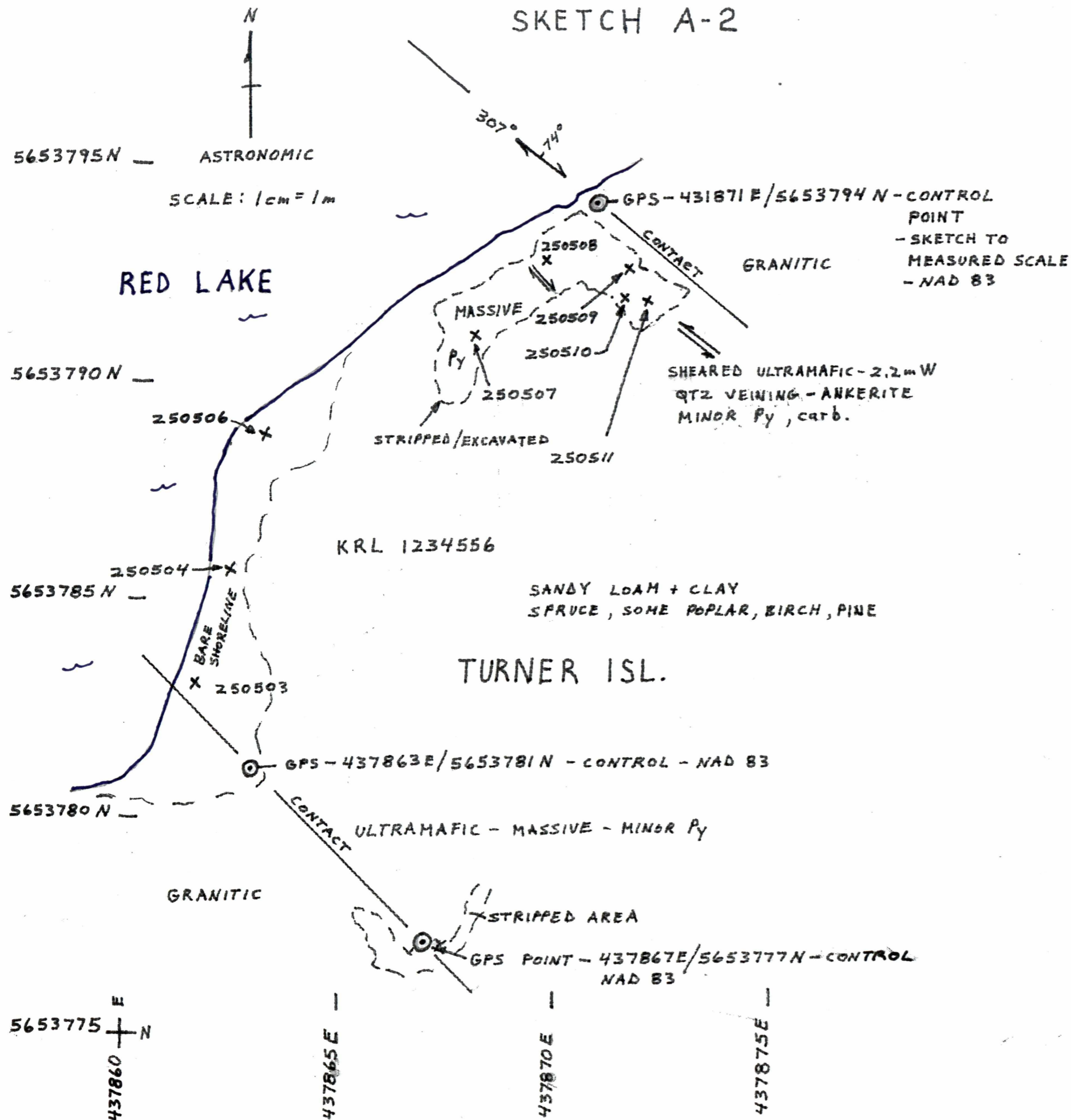
- GPS (NAD 83)
- 250501 - 437812 E / 5653480 N
  - 250502 - 437803 E / 5653493 N
  - 250512 - 437810 E / 5653492 N
  - 250513 - 437804 E / 5653416 N
  - 250514 - 437811 E / 5653420 N



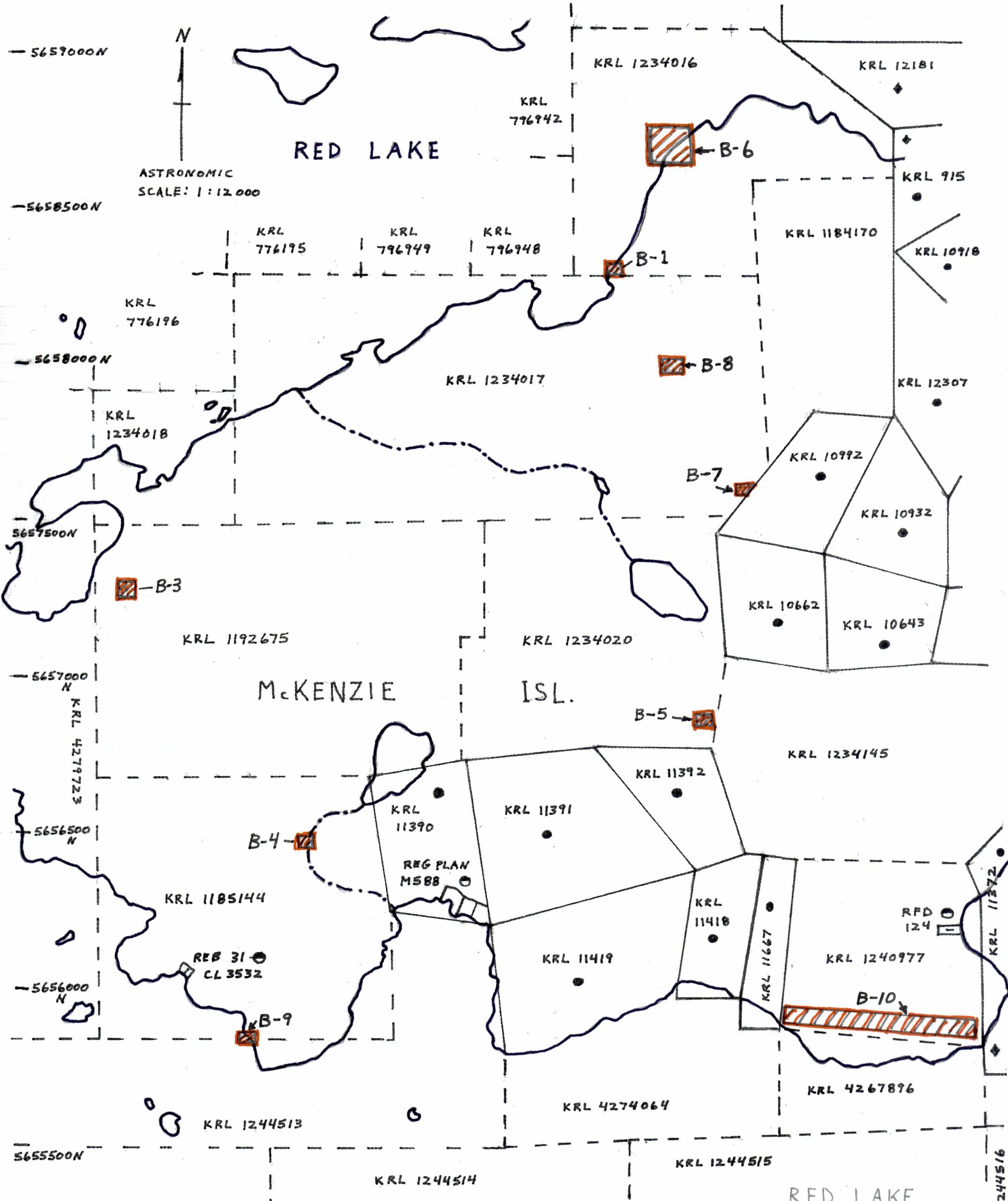
SKETCH A-2

This is the location of a large ultra-mafic dyke with an average width of 15 metres. The bulk of this dyke is massive with small amounts of scattered pyrite, but at the north east flank with the Dome Stock is a shear zone with quartz veining and small amounts of pyrite. The shearing averages 2.2 metres in width and the gold values low. What appeared promising with the shearing and quartz veining returned no values.

SKETCH A-2



- SAMPLE - 250503 - .008 PPM Au - MASSIVE ULTRAMAFIC DIKE  
MINOR Py
- 250504 - .012 PPM Au - MASSIVE ULTRAMAFIC DIKE  
MINOR Py
- 250506 - 4.005 PPM Au - MASSIVE ULTRAMAFIC DIKE
- 250507 - .005 PPM Au - MASSIVE ULTRAMAFIC DIKE  
MINOR Py
- 250508 - 0.128 PPM Au - SHEARED ULTRAMAFIC  
MINOR Py - FINE QTZ  
STRINGERS
- 250509 - <.005 PPM Au - SHEARED ULTRAMAFIC  
MINOR Py, QTZ VN'ING
- 250510 - <.005 PPM Au - SHEARED ULTRAMAFIC  
MINOR Py, QTZ VN'ING
- 250511 - <.005 PPM Au - QTZ VEINS + SLIVERS  
ULTRAMAFIC HOST  
MINOR Py
- 250505 - BLANK - <.005 PPM Au



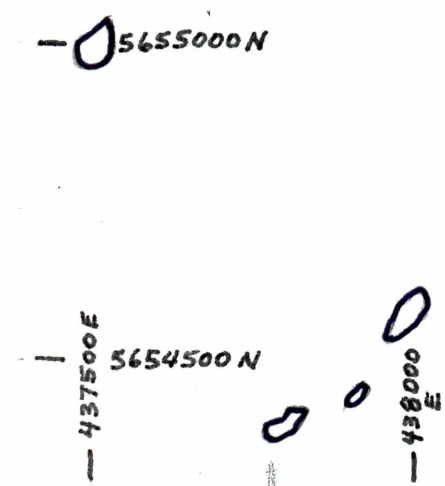
LOCATION MAP "B"

LEGEND

- SAMPLING AREA
- PATENT CLAIM
- STAKED CLAIM
- LICENCE OF OCCUPATION
- REB/REG/RFD - CABIN LOTS
- WATER BOUNDARY
- CREEK

KRL-00000 - CLAIM NUMBER

000000E/0000000N  
UTM - NAD 83

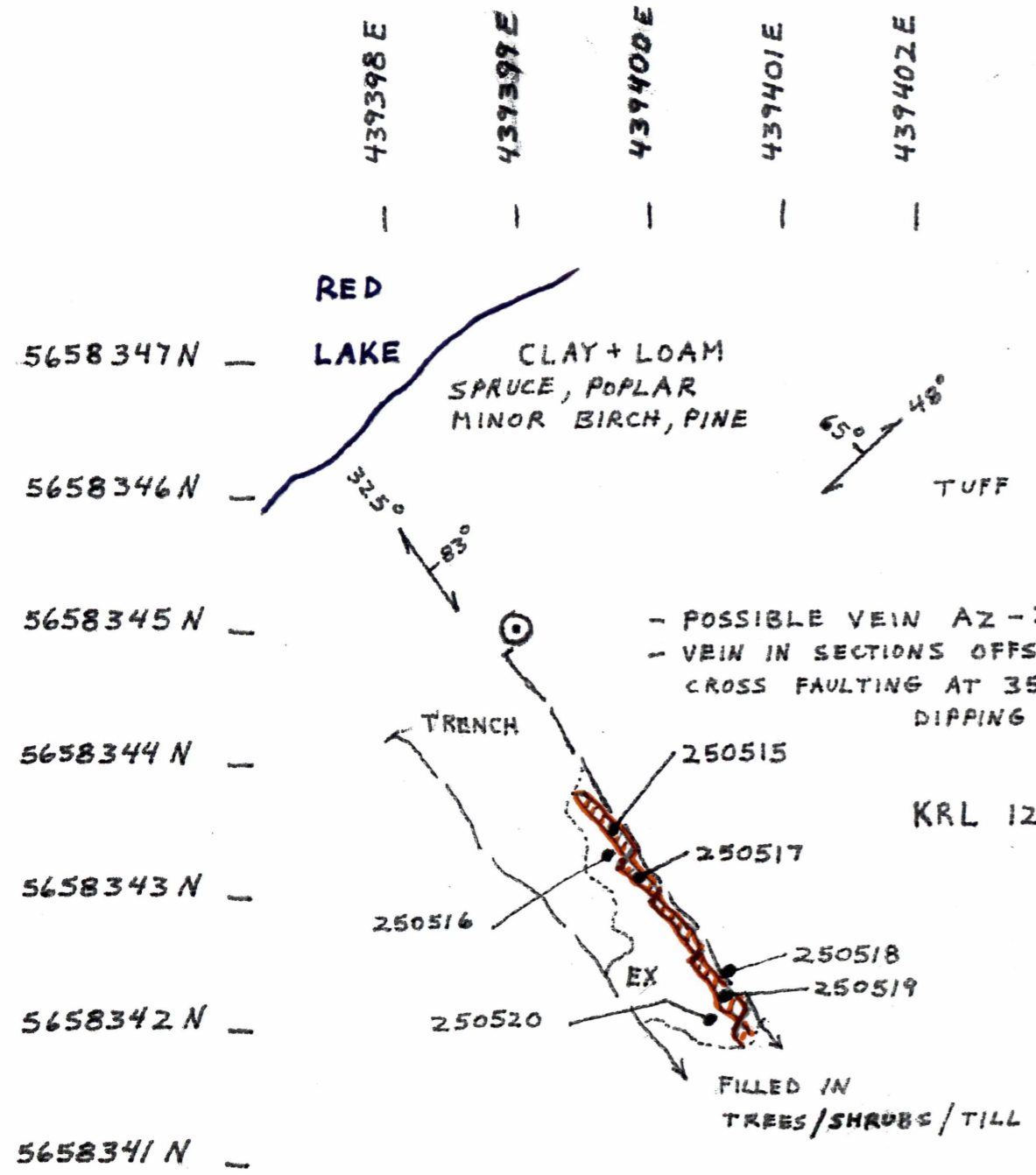


SKETCH B-1

This is a quartz vein in an old trench dating from 1934 ( MDI 52N 045W 00056 ) mineralized with pyrrhotite. The host volcanics consist of bedded tuffs with some sections of lapilli tuff intercalated. The strike is 48 degrees north east and average is 65 degrees to the north west. The vein itself crosscuts the volcanic foliation at an average 325 degrees north west and dipping 83 degrees north east with being faulted off into inconsistent sections by cross faults at 35 degrees and joints/ends dipping 66 degrees south east. The vein occupies a tension fracture with a latter event breaking it into segments.

Assays from the quartz vein ranged from 2.77 PPM Au/tonne to 18.02 PPM Au/tonne with the tuffs alongside the vein under 1 gram/ton Au. There were only six samples taken but to take more will require a determined excavation by hand tools since this showing is alongside the water of Red Lake. Historical assays from channel samples reached 1.2 ounces/ton.

# SKETCH B-1



- SAMPLE: 250515 - 12.8 PPM Au - FAA } QTZ VEIN - minor P<sub>0</sub>  
18.02 PPM Au - FAG }
- 250516 - .027 PPM Au - TUFF
- 250517 - 12.8 PPM Au - FAA } QTZ VEIN - MINOR P<sub>0</sub>  
16.65 PPM Au - FAG }
- 250518 - .675 PPM Au - TUFF - MINOR P<sub>0</sub>
- 250519 - 2.77 PPM Au - QTZ VEIN
- 250520 - .477 PPM Au - TUFF - MINOR P<sub>0</sub>

- QTZ VEIN - AVE. 6 cm W - UP TO 15 cm W
- EX - EXCAVATED BY HAND
- ⊙ - GPS ANCHOR POINT - 439399E / 5658345N  
SKETCH TO MEASURED SCALE

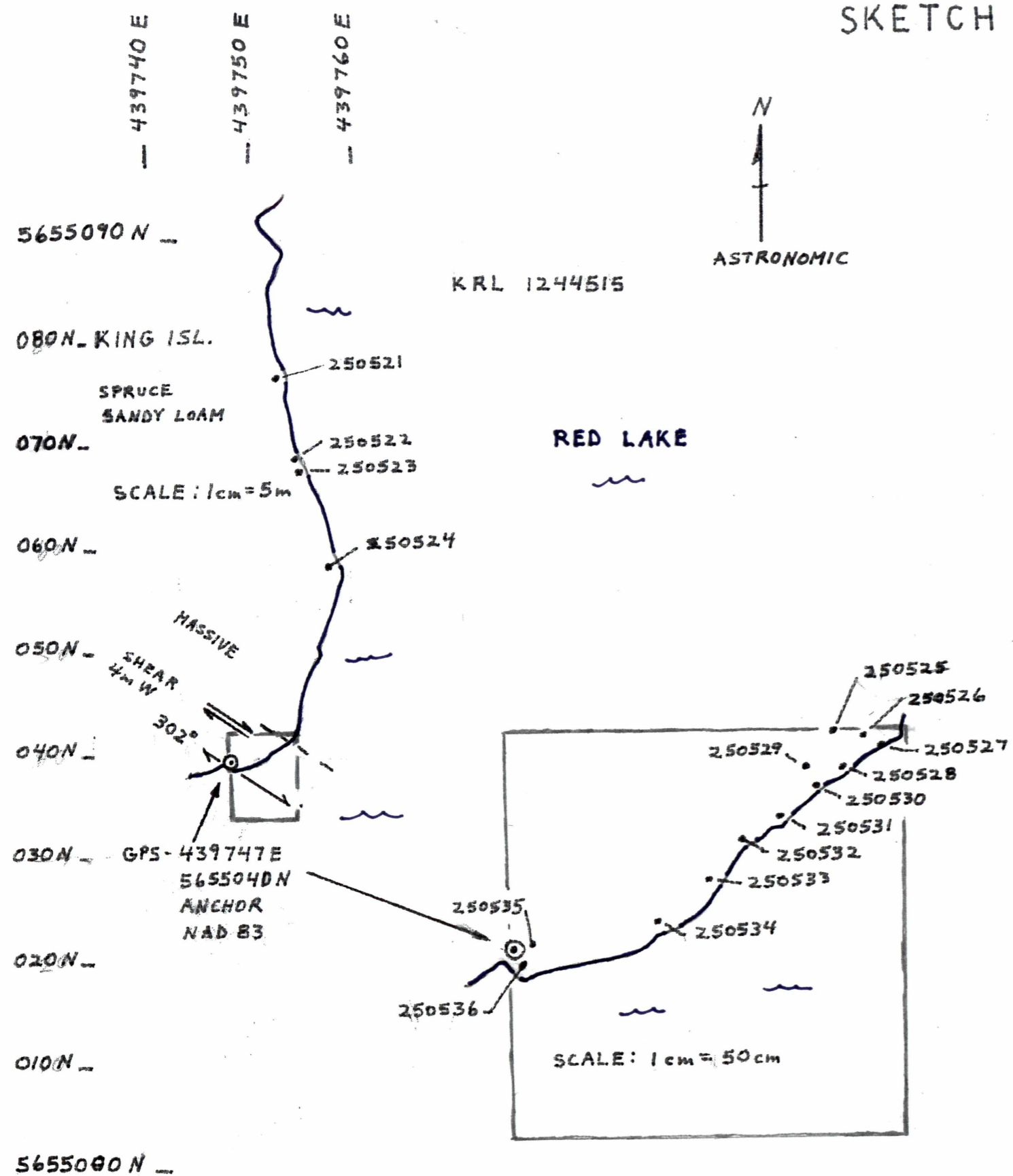
McKENZIE ISL.

SKETCH B-2

This area sampled is a northerly trending gabbro intrusive crosscutting the Dome Stock located on King Island. The gabbro intrusive is approximately 35 metres in width but with little exposure. The gabbro is sparsely mineralized with pyrite with weak to moderate shearing. The importance of this location is that it is on trend with the MacAndrew gold prospect on the patented claims to the north.

The gold values from the available outcrop returned anomalous but low.

# SKETCH B-2



- SAMPLES: 250521 - .013 PPM - GABBRO, BORDER PHASE WITH  
 Au GRANITE - minor Py
- Au 250522 - .029 PPM - GABBRO, minor Py
  - Au 250523 - .005 PPM - GABBRO
  - Au 250524 - .038 PPM - GABBRO, minor Py
  - Au 250525 - .013 PPM - SHEARED GABBRO, minor Py
  - Au 250526 - .025 PPM - SHEARED GABBRO, minor Py
  - Au 250527 - .014 PPM - SHEARED GABBRO, minor Py
  - Au 250528 - .010 PPM - SHEARED GABBRO
  - Au 250529 - <.005 PPM - SHEARED GABBRO
  - Au 250530 - <.005 PPM - SHEARED GABBRO
  - Au 250531 - <.005 PPM - SHEARED GABBRO
  - Au 250532 - <.005 PPM - SHEARED GABBRO
  - Au 250533 - <.005 PPM - SHEARED GABBRO
  - Au 250534 - <.005 PPM - SHEARED GABBRO
  - Au 250535 - .007 PPM - SHEARED GABBRO
  - Au 250536 - <.005 PPM Au - GABBRO

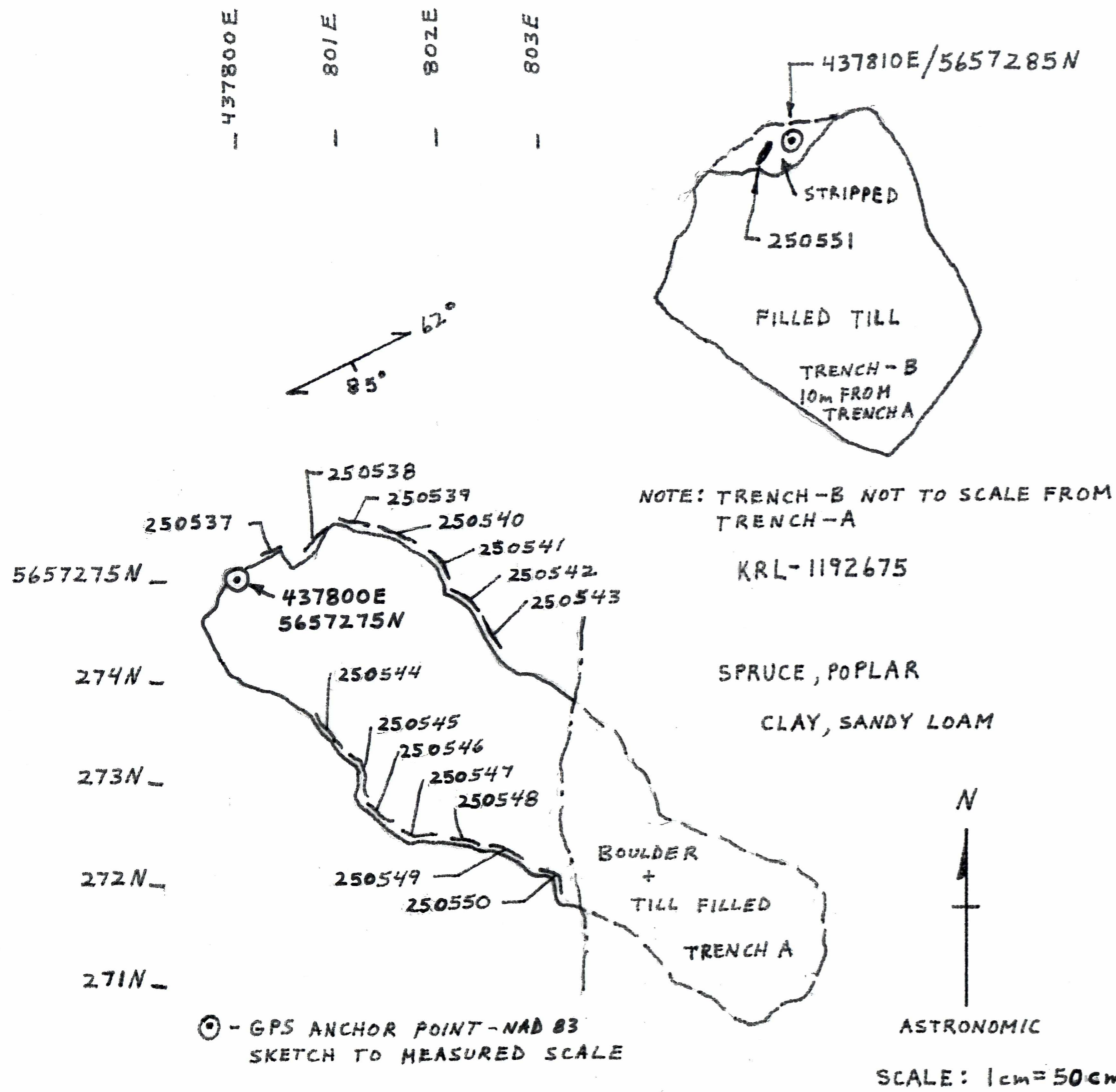


SKETCH B-3

These two trenches were discovered south east from a bay on the north shore of the western end of McKenzie Isl. The host volcanic is diorite that has been mineralized with pyrrhotite. The general strike is 62 degrees north east and dip 85 degrees to the south east. The diorite is blocky ( massive ) with narrow weak shearing and very little silicification. The location is on the northern border phase of the magnetic high as shown on the accompanying magnetic contour map.

The highest assay is .109 PPM Au/tonne in diorite that has pyrrhotite mineralization with a slight silicification and a minor shear.

# SKETCH B-3



po - PYRRHOTITE

- SAMPLE: 250537 - .017 PPM Au - DIORITE, po  
 250538 - <.005 PPM Au - DIORITE, <po  
 250539 - <.005 PPM Au - DIORITE, <po  
 250540 - <.005 PPM Au - DIORITE, <po  
 250541 - .014 PPM Au - DIORITE, po  
 250542 - .026 PPM Au - DIORITE, po (.024 PPM Au - REPEAT  
 250543 - .024 PPM Au - DIORITE, po  
 250544 - .049 PPM Au - DIORITE, po  
 250545 - .034 PPM Au - DIORITE, po  
 250546 - .078 PPM Au - DIORITE, po, minor SHEAR  
 250547 - .109 PPM Au - DIORITE, po, minor SHEAR, SILICIFICATION  
 250548 - .039 PPM Au - DIORITE, po  
 250548 - .011 PPM Au - DIORITE, po  
 250550 - <.005 PPM Au - DIORITE  
 250551 - <.005 PPM Au - DIORITE, QTZ EYES 1-2mm

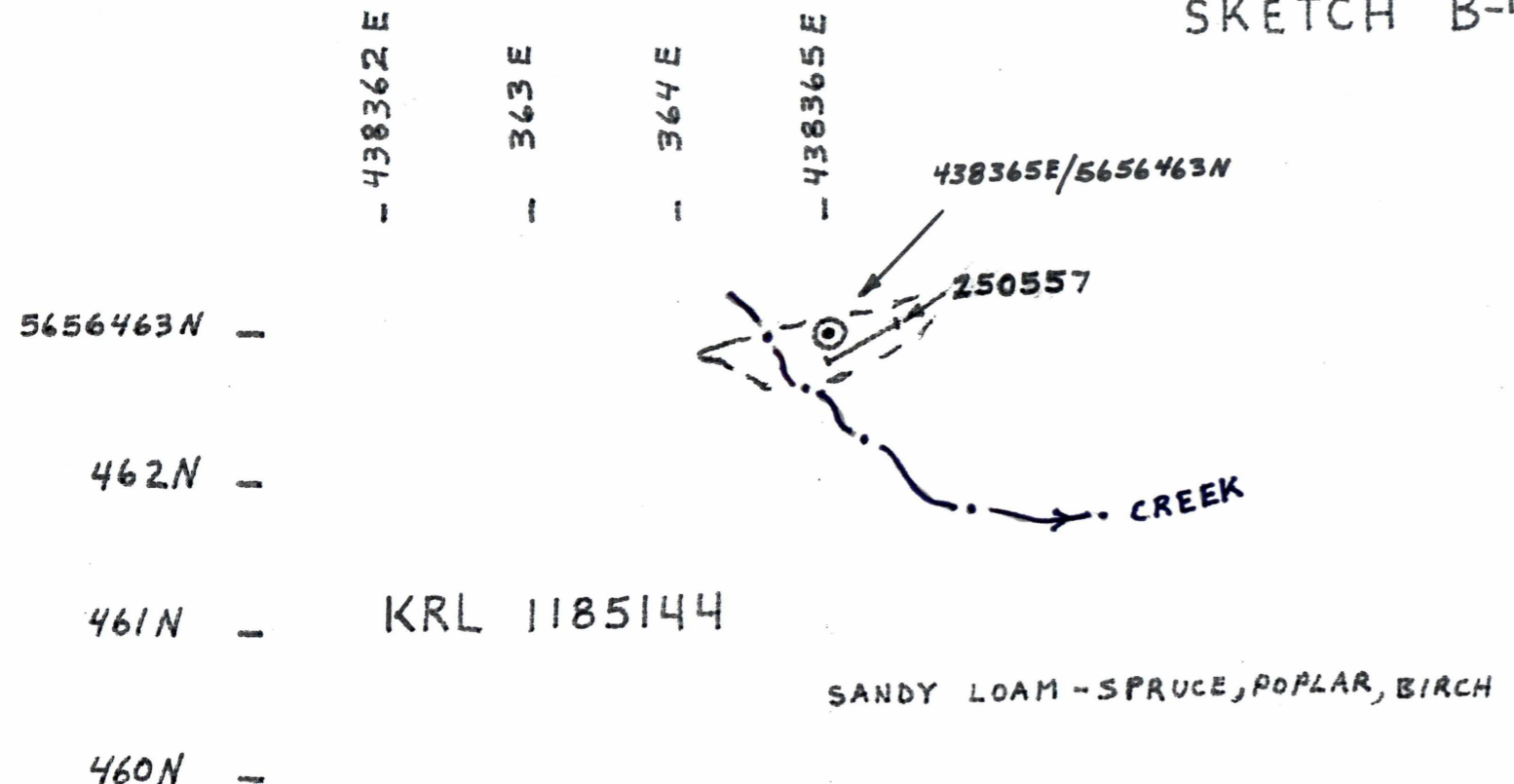
McKENZIE ISL.

SKETCH B-4

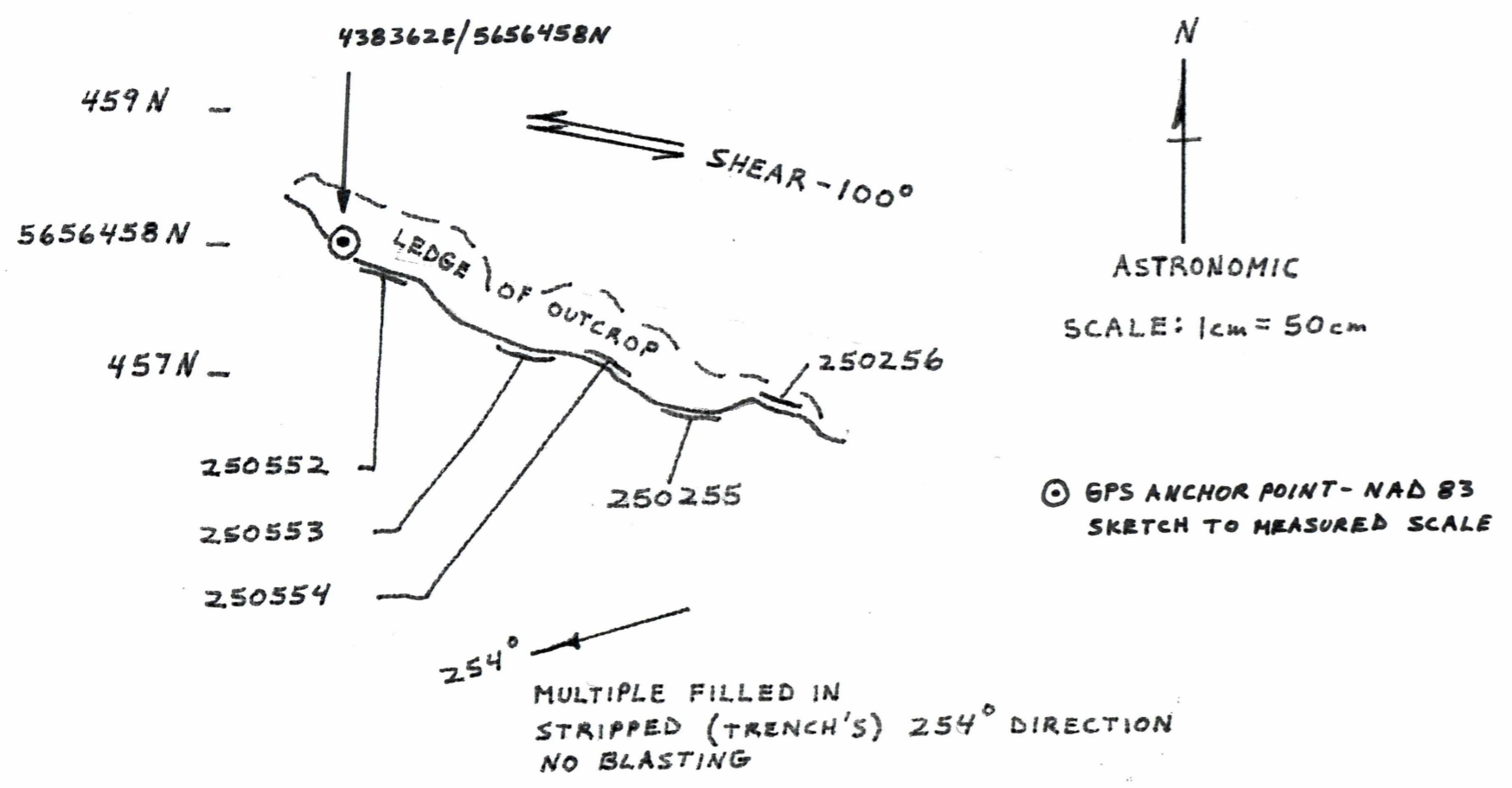
An exposed outcrop of granitic host ( Dome Stock ) was found in a creek and nearby ( as per GPS co-ordinates provided ) in line with several old stripped sections en echelon to the immediate west. All strippings are filled in ( 1.5 feet + ) and drill sites flanked the area to the north. The granite exhibited minor shearing at 100 degrees azimuth with minor pyrite mineralization and some chloritic alteration.

Assays returned low anomalous values.

SKETCH B-4



- SAMPLE :
- 250552 - <.005 PPM Au - GRANITE - MINOR SHEAR
  - 250553 - .011 PPM Au - GRANITE - MINOR Py SHEAR
  - 250554 - .023 PPM Au - GRANITE - MINOR Py MINOR CHLORITE - SHEAR
  - 250555 - .019 PPM Au - GRANITE - MINOR Py SHEAR
  - 250556 - <.005 PPM Au - GRANITE - SHEAR
  - 250557 - <.005 PPM Au - GRANITE - SHEAR MINOR Py

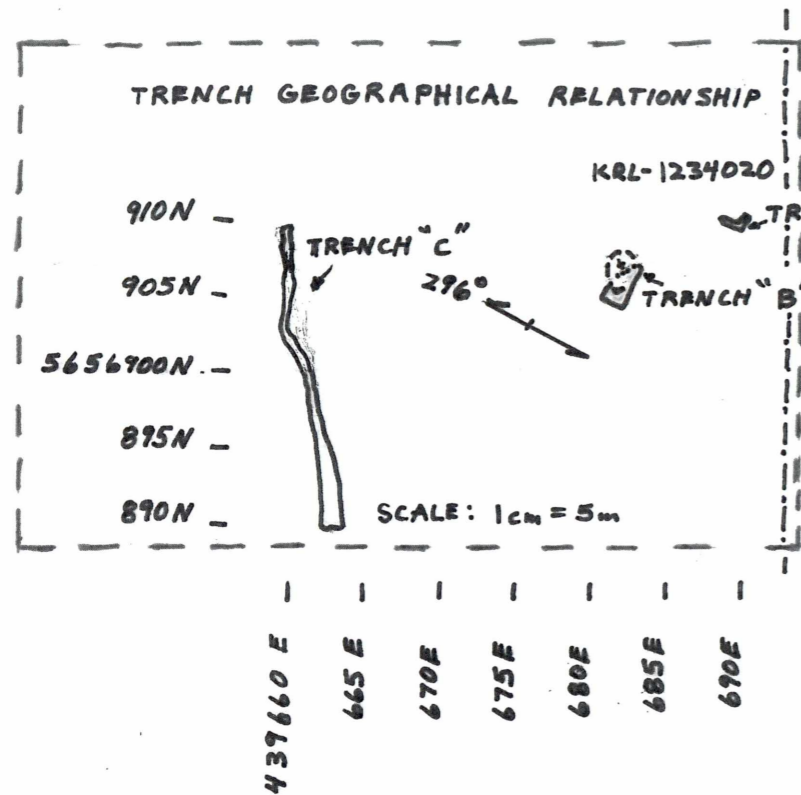


SKETCH B-5

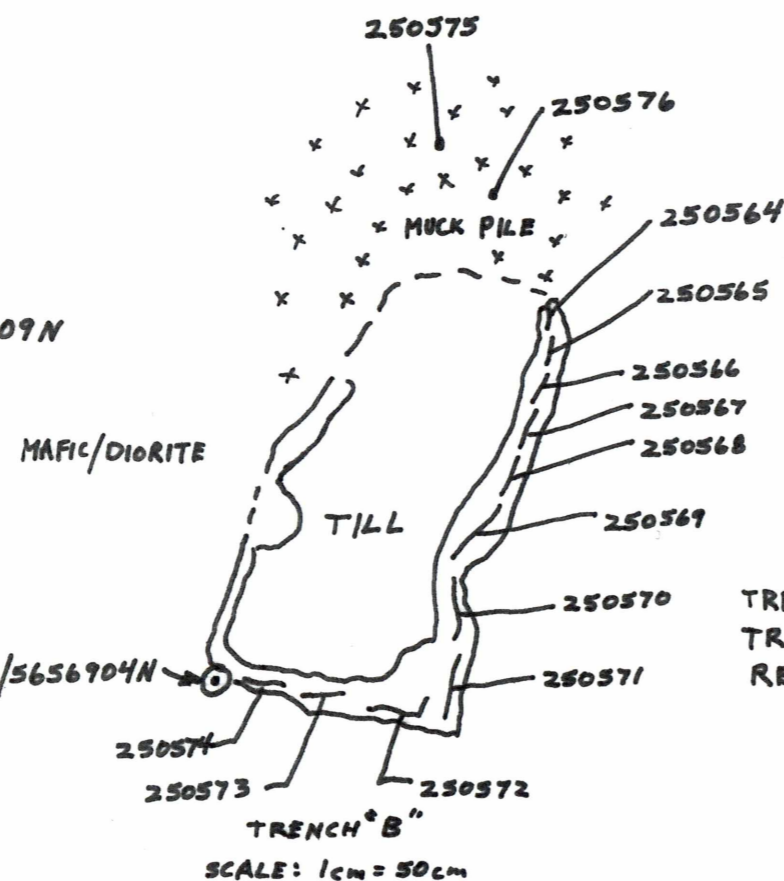
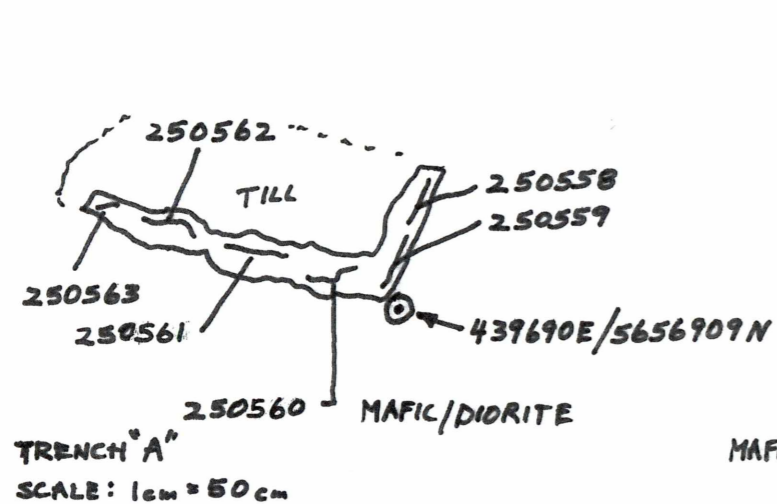
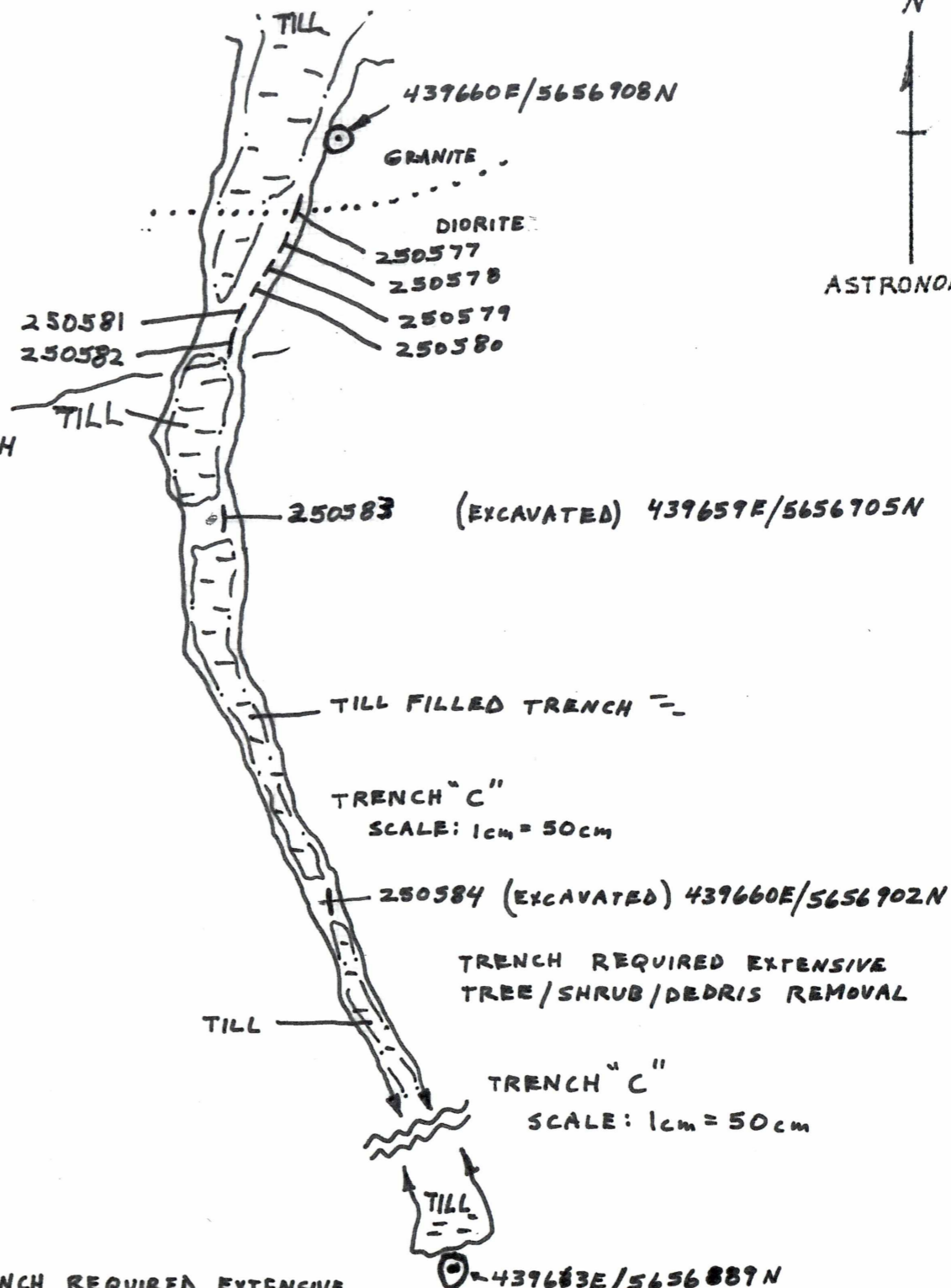
These trenches were located near the central eastern boundary of the claim block on McKenzie Isl. The geology consists of mineralized mafic diorite/quartz diorite, certain sections well mineralized with pyrrhotite. A few quartz veins cut the massive diorite and some amphiboles were discovered ( augite ) in the more mafic sections of trench " B ". To the immediate north and sketched in trench " C " is the Dome Stock. The foliation strikes 296 degrees and dip is near vertical

This area is also to the north of the high magnetic contour.

SKETCH "B-5"



SANDY LOAM - POPLAR, SPRUCE, BIRCH



TRENCH REQUIRED EXTENSIVE TREE/SHRUB/DEBRIS REMOVAL

- claim boundary

KRL-0000000 - CLAIM NUMBER

⊙ - GPS ANCHOR POINT-NAD 83 SKETCH'S TO MEASURED SCALE

\* TRENCH'S REQUIRED EXTENSIVE CLEARING

\* SAMPLES ON SEPERATE SHEETS

SAMPLES: B-5

250584 - <.005 PPM AU - DIORITE, < Po

SAMPLES - B-5

- 250558 - <.005 PPM AU - DIORITE, Po
- 250559 - <.005 PPM AU - DIORITE, Po
- 250560 - <.005 PPM AU - DIORITE, Po
- 250561 - .013 PPM AU - DIORITE, Po
- 250562 - <.005 PPM AU - DIORITE, Po
- 250563 - .009 PPM AU - DIORITE, Po
- 250564 - <.005 PPM AU - DIORITE, QUARTZ VN(3cm), < Po
- 250565 - .012 PPM AU - DIORITE, < Po
- 250566 - .087 PPM AU - DIORITE, (MAFIC), AUGITE, Po
- 250567 - .010 PPM AU - DIORITE, SHEARED, Po
- 250568 - .006 PPM AU - DIORITE, Po
- 250569 - .021 PPM AU - DIORITE, SHEARED, Po
- 250570 - .013 PPM AU - DIORITE, AUGITE, Po
- 250571 - .010 PPM AU - DIORITE, QUARTZ VN(4-6cm), Po
- 250572 - .006 PPM AU - DIORITE(MAFIC), Po
- 250573 - .011 PPM AU - DIORITE(MAFIC), Po
- 250574 - .006 PPM AU - DIORITE(MAFIC), Po
- 250575 - <.005 PPM AU - QUARTZ VN'ING FROM MUCKPILE
- 250576 - <.005 PPM AU - QUARTZ VN'ING FROM MUCKPILE
- 250577 - <.005 PPM AU - CONTACT - GRANITE / DIORITE
- 250578 - .076 PPM AU - DIORITE, QUARTZ VN(3cm), Po
- 250579 - <.005 PPM AU - DIORITE, < Po
- 250580 - <.005 PPM AU - DIORITE, < Po
- 250581 - .040 PPM AU - DIORITE, Po, SLIGHT SHEAR
- 250582 - <.005 PPM AU - DIORITE, < Po
- 250583 - <.005 PPM AU - DIORITE, < Po

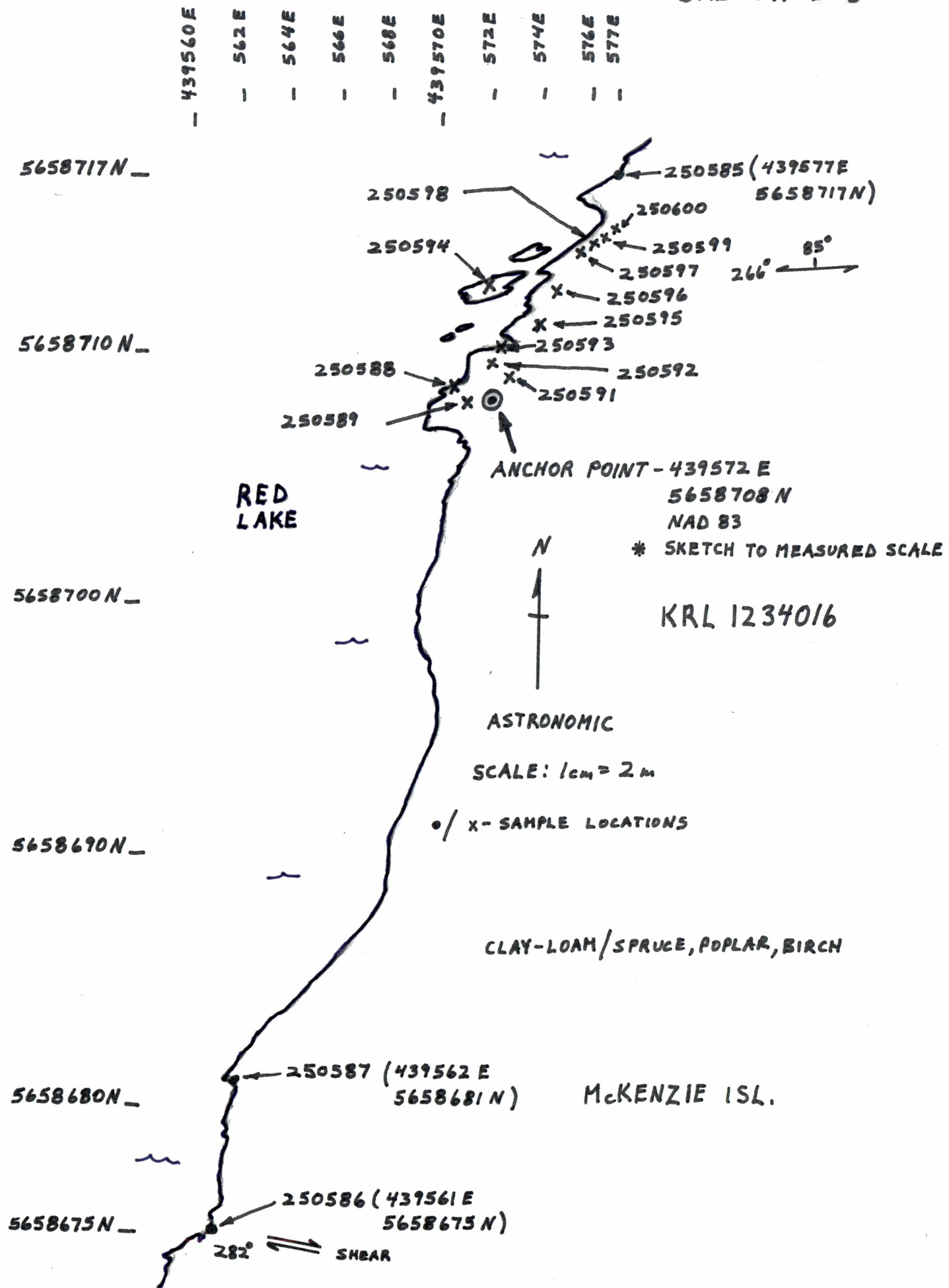
SKETCH B-6

This area is alongside the shoreline of Red Lake on McKenzie Island near the northern most section of the claim block. Bedded sediments ( wacke /carbonate ) are in contact with the predominate welded tuff with weak pyrite mineralization and small carbonate/quartz veining.

Gold values are low in the samples aquired.



SKETCH B-6



SAMPLES

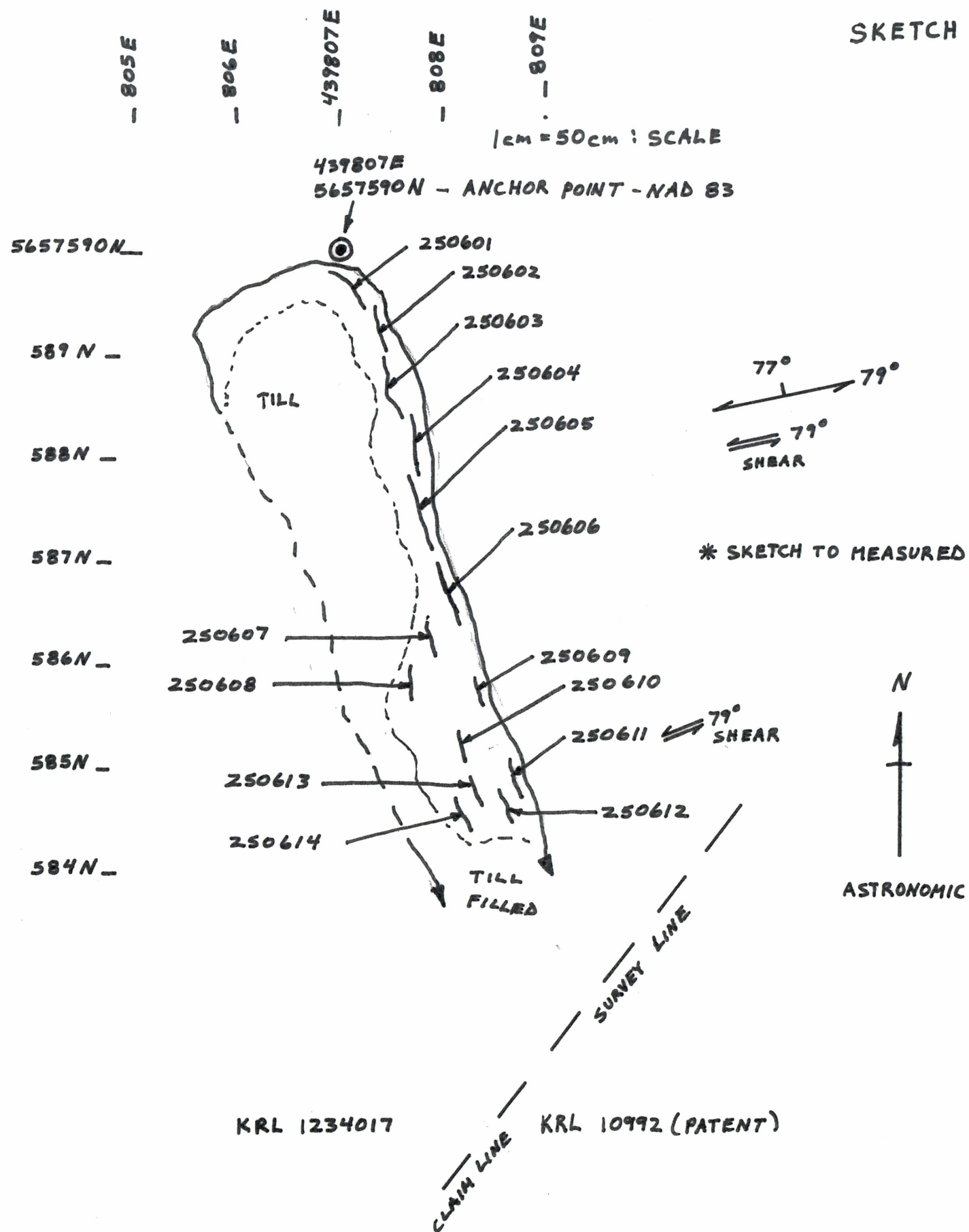
- 250585 - <.005 PPM Au - WACKE, < Py
- 250586 - <.005 PPM Au - TUFF, SHEARED, py
- 250587 - <.005 PPM Au - TUFF, < Py
- 250588 - <.005 PPM Au - CARB/WACKE
- 250589 - <.005 PPM Au - CARB/WACKE
- 250590 - BLANK - <.005 PPM Au
- 250591 - <.005 PPM Au - CARB/WACKE
- 250592 - .035 PPM Au - CARB/WACKE, < py
- 250593 - <.005 PPM Au - CARB/WACKE
- 250594 - <.005 PPM Au - CARB/WACKE
- 250595 - <.005 PPM Au - CARB/WACKE / QUARTZ STRINGERS
- 250596 - <.005 PPM Au - CARB/WACKE / QUARTZ STRINGERS
- 250597 - <.005 PPM Au - TUFF / CARB / QUARTZ STRINGERS
- 250598 - <.005 PPM Au - TUFF / CARB / QUARTZ STRINGERS
- 250599 - <.005 PPM Au - WACKE
- 250600 - <.005 PPM Au - WACKE

SKETCH B-7

Area B-7 is a mafic tuff unit with the foliation at 79 degrees east/north east and dip to the north/north west at 77 degrees. An old trench was cleaned out alongside the boundary with patent KRL 10992. The mafic tuff is sparsely mineralized with pyrite and pyrrhotite, and in narrow discreet zones sheared and marginally silicified. The shearing is foliation parallel at 79 degrees east/north east and dipping 77 degrees to the north/north west.

The assays are low in Au.

SKETCH B-7



SAMPLES

- 250601 - <.005 PPM Au - MAFIC TUFF, < Py, Po
- 250602 - <.005 PPM Au - MAFIC TUFF, < Py, Po
- 250603 - <.005 PPM Au - MAFIC TUFF
- 250604 - <.005 PPM Au - SHEARED MAFIC TUFF, < Py, Po
- 250605 - <.005 PPM Au - SHEARED MAFIC TUFF, < Py, Po
- 250606 - <.005 PPM Au - MAFIC TUFF
- 250607 - .007 PPM Au - MAFIC TUFF, Py, Po
- 250608 - .011 PPM Au - MINOR SILICIFIED MAFIC TUFF, Py, Po
- 250609 - .010 PPM Au - MINOR SILICIFIED MAFIC TUFF, Py, Po
- 250610 - <.005 PPM Au - MAFIC TUFF, < Py, Po
- 250611 - .006 PPM Au - MAFIC TUFF, < Py, MINOR SHEAR
- 250612 - .006 PPM Au - MAFIC TUFF, < Py, MINOR SHEAR
- 250613 - <.005 PPM Au - MAFIC TUFF, < Py, MINOR SHEAR
- 250614 - .006 PPM Au - MAFIC TUFF, < Py, MINOR SHEAR

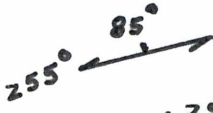
SKETCH B-8

Prospecting in this area was initiated in order to discover the extension of the gold bearing zone found and drilled by Placer Dome on adjoining claim KRL 1184170. The area which crossed the highest prospective location was overburden covered but areas along the projected strike are still open in both directions( to and from ).

The highest assay recovered is .023 PPM Au/tonne in a tuff mineralized with fine pyrrhotite and sheared at 318 degrees across foliation of 255 degrees/dip of 85 degrees north/north west.

— 439470 E  
 — 488E  
 — 490E  
 — 439500 E  
 — 510E  
 — 520E  
 — 530E  
 — 540E

5658050N —



250619 - .023 PPM Au - 439473E/5658042N  
GOSSAN - SHEARED TUFF - FINE P<sub>0</sub>

040N —

030N —

SANDY CLAY LOAM - SPRUCE, POPLAR, BIRCH  
SOME PINE

020N —

250617 - <.005 PPM Au - 439490E/5658015N  
TUFF - MINOR FINE P<sub>0</sub>, MASSIVE

010N —



250618 - <.005 PPM Au - 439488E/5658010N  
TUFF - FINE P<sub>0</sub>, MASSIVE

5658000N —

990N —



250616 - <.005 PPM Au - 439496E/5657987N  
SILICIFIED MAFIC TUFF, FINE P<sub>0</sub>  
FELDSPATHIC, MASSIVE

980N —



KRL 1234017

970N —

960N —



ASTRONOMIC

SCALE: 1cm = 5m

950N —

940N —

930N —

SIL. TUFF, MASSIVE, SOME FELDSPAR CRYSTALS



920N —

CLAY LOAM - SPRUCE, POPLAR

910N —

250615 - <.005 PPM Au  
SILICIFIED TUFF, < P<sub>y</sub>  
MINOR SHEARING  
439538E/5657908N



5657900N —

SKETCH B-8

SKETCH B-9

This area provided high grade assays in gold. It is in the MNDM inventory as MDI 52N 045W 00076 wherein the highest assay returned 212,800 PPB Au. The values come from a flat lying ( high strain ) quartz vein that is well mineralized with pyrite, copper with some bornite and to a lesser extent arsenic, and high grade gold. The best new assay from this quartz vein ran 331.14 PPM Au/tonne.

The other assays from the main vein are as follows: 68.03 PPM Au/tonne, 114.57 PPM Au/tonne, 115.20 PPM Au/tonne, 142.49 PPM Au/tonne( all sample numbers and locations on sketch ). Multiple samples were taken to assess the possibility of a nugget effect. Assay 53.01 PPM Au/tonne and 93.91 PPM Au/tonne were taken from the footwall below the main vein from mineralized sub parallel veining. The assay 9.37 PPM Au/tonne is from the hanging wall ( above main vein ) with minor mineralized ( pyrite and copper ) veining in the Dome Stock.

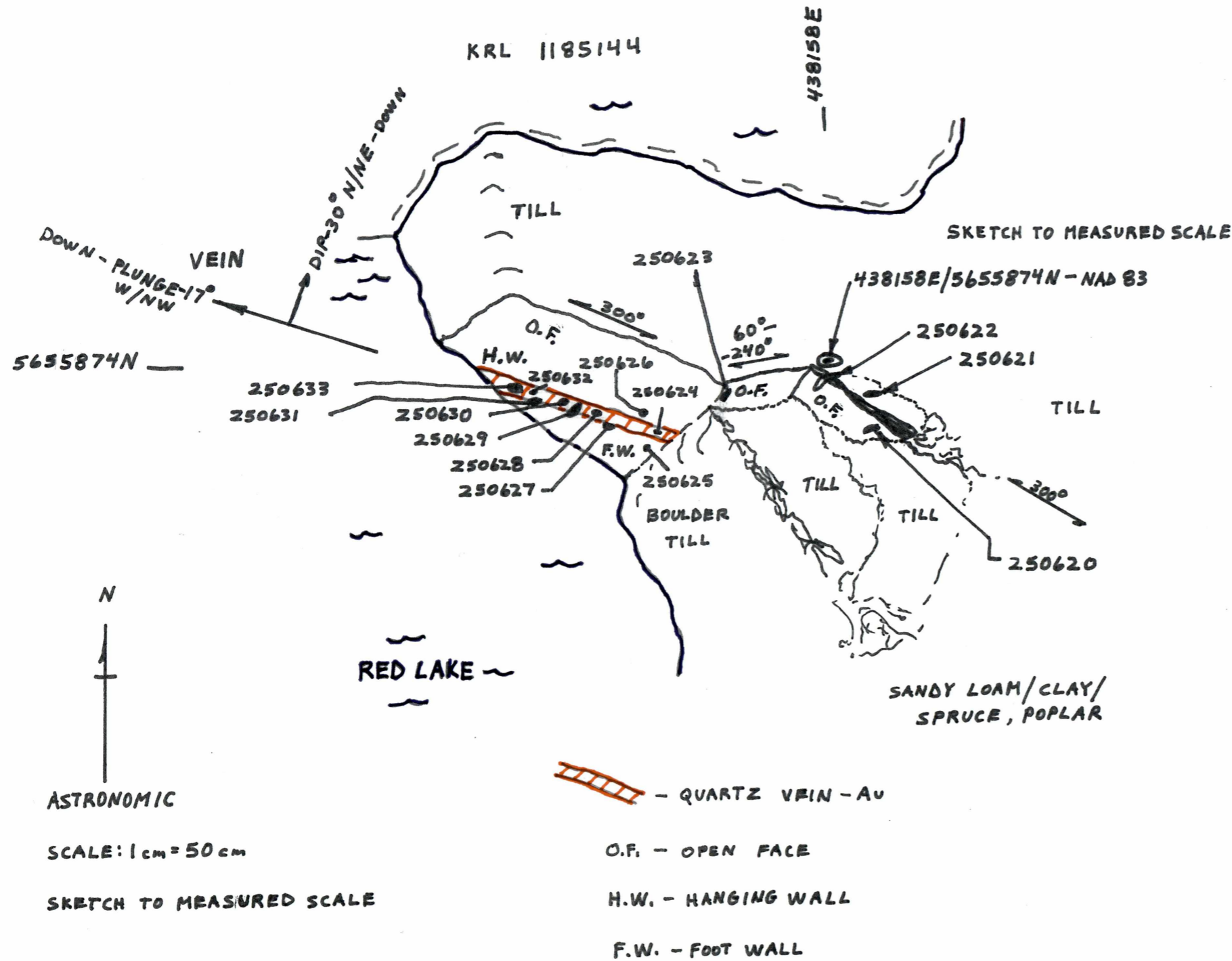
It was observed that as the main vein plunged down to the lake ( westerly ) and dipped down ( northerly ) it widened in both directions.

It is also noted with the ICP results that gold content increased with a corresponding increase in mineralization, primarily pyrite and copper and to a lesser extent arsenic.

The main vein averaged 12 cm. in width at the exposed face and is situated in the Dome Stock.

# SKETCH B-9

(LOOKING NORTH AT 30° DOWN ANGLE) (APPROX.)



\* NOTE - QUARTZ VEIN EXHIBITED WIDENING TO THE DOWN PLUNGE TO THE W/NW AND THE DOWN DIP TO THE N/NE

## SAMPLES

- 250620 - <.005 PPM Au - GRANITE - NO SULPHIDES
- 250621 - <.005 PPM Au - GRANITE - NO SULPHIDES
- 250622 - <.005 PPM Au - GRANITE - VEINLET QUARTZ - < 1mm NO SULPHIDES (.009 PPM REPEAT)
- 250623 - <.005 PPM Au - GRANITE - < Py
- 250624 - 68.03 grams - VEIN (QTZ) - Py, Cp PER TONNE Au
- 250625 - <.5 PPM Au / .075 PPM Au - GE-FAASIS - GRANITE FOOTWALL BELOW VEIN - NO SULPHIDES
- 250626 - <.5 PPM Au / .006 PPM Au - GE-FAASIS - GRANITE HANGING WALL - ABOVE VEIN NO SULPHIDES
- 250627 - 53.01 grams / VEIN (QUARTZ) IN FOOTWALL - Py, Cp PER TONNE Au | BORNITE (PARALLEL SUB-VEINING + GRANITE HOST)
- 250628 - 114.57 grams / VEIN (QUARTZ) py, cp, BORNITE PER TONNE Au
- 250629 - 115.20 grams / VEIN (QUARTZ) py, cp, BORNITE PER TONNE Au | + FOOTWALL GRANITE
- 250630 - 142.49 grams / VEIN (QUARTZ) py, cp, BORNITE PER TONNE Au
- 250631 - 9.37 grams / VEIN (QUARTZ) py, po + HANGING WALL PER TONNE Au GRANITE
- 250632 - 93.91 grams / FOOTWALL + SECONDARY VEINS PER TONNE Au | GRANITE + QUARTZ - py, cp
- 250633 - 331.14 grams / VEIN (QUARTZ) - py, cp, BORNITE PER TONNE Au | MORE SULPHIDES NOTICED
- 250634 - BLANK - <.005 PPM Au

SKETCH B-10

This prospecting was started on claim KRL 1240977 and was curtailed due to an oncoming snowfall warning with high winds that did impact. The host geology is the Dome Stock with fingers of welded tuff in an east-westerly direction. The samples taken were of northerly strain sections in the Dome Stock, two with minor pyrite.



SKETCH B-10

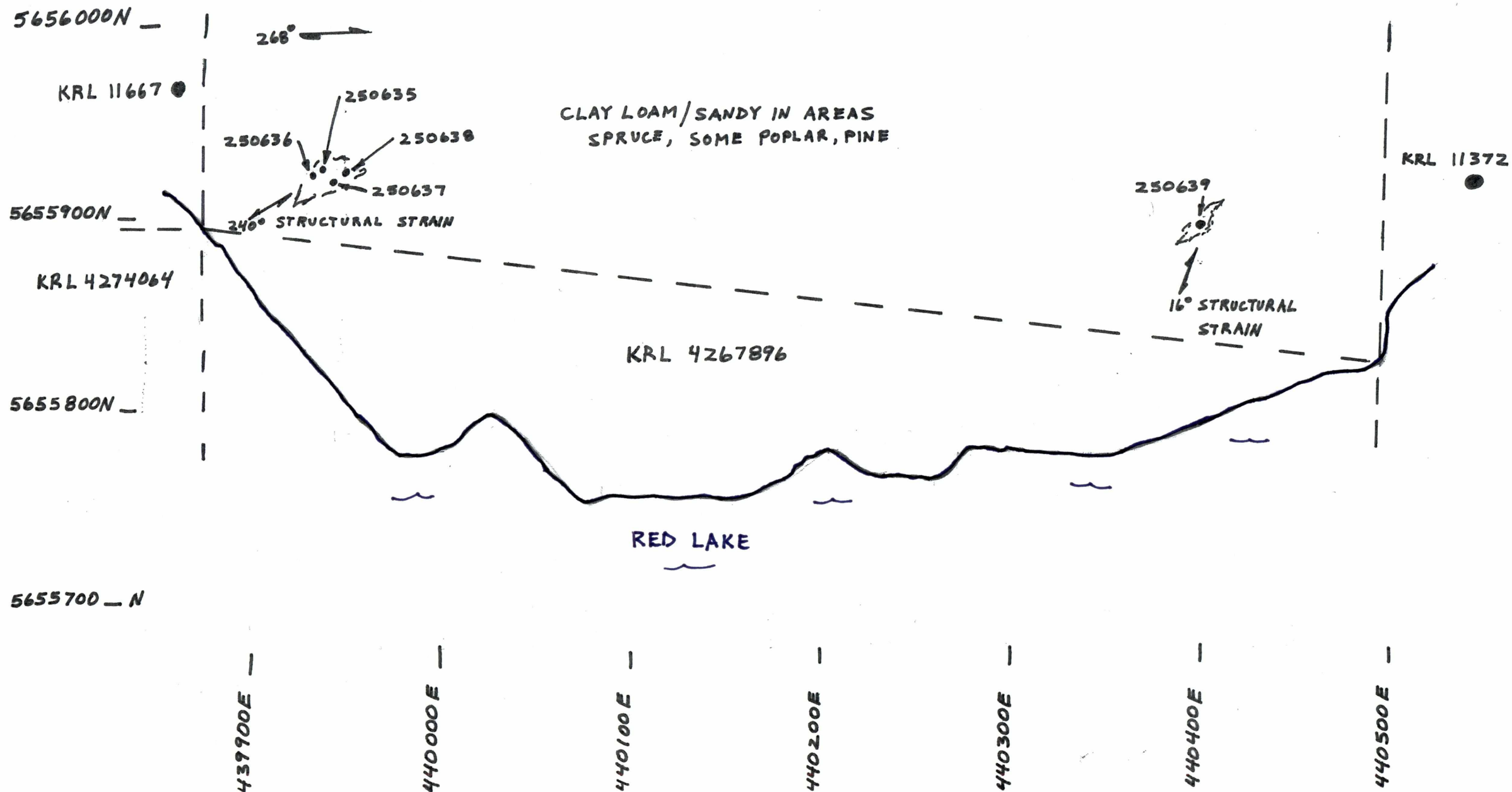
SAMPLES



SCALE: 1cm = 25m

- 439930E/5655925N - 250635 - <.005 PPM Au - GRANITE, STRUCTURAL STRAIN 240°
- 439918E/5655921N - 250636 - <.005 PPM Au - GRANITE, STRUCTURAL STRAIN 240°
- 439947E/5655920N - 250637 - <.005 PPM Au - GRANITE, STRUCTURAL STRAIN 240°
- 439951E/5655923N - 250638 - <.005 PPM Au - GRANITE, STRUCTURAL STRAIN 240° < Py
- 440400E/5655890N - 250639 - .008 PPM Au - GRANITE, STRUCTURAL STRAIN 16°, < Py (196°)

KRL 1240977



## DATA ANALYSIS

All samples( 139 minus three blanks ) were chip/grab samples and all were assayed for gold ( Au ) at SGS by GE\_FAA515 with a detection limit of .005 PPM Au. Any assays over 10.00 PPM Au were checked by method GO\_FAG505 with a detection limit of 0.5 PPM Au.

Fourteen samples taken at location SKETCH B-9 also underwent an ICP analysis to determine the relationship(s) with the high grade gold results.

## CONCLUSIONS

The prospecting program accurately located two showings with ore grade assays, one of these being high grade. These are priority areas.

The other areas where there are anomalous gold values are of low concentrations and are mainly isolated and/or separated by long distance.

Therefore, there are still many viable areas for prospecting as yet not seen, primarily because of accessibility and expense and of course, available time.

It is concluded that the prospecting program, which has located promising showings is as yet incomplete.

## RECOMMENDATIONS

1 - It is highly recommended that the area surrounding Sketch B-9 be systematically prospected including the southern claims which contain the Dome Stock for similar strain and gold mineralization.

2 - A soil sampling program in the same southern claims would be beneficial by checking for elevated iron and copper values which is a trademark signature of the high grade showing.

3 - Prospect the area overtop the magnetic high that follows the contact/transition zone between the Dome Stock and the welded tuffs which is known to contain intrusive volcanics.

STATEMENT of QUALIFICATIONS

I, Antony J. Maciejewski of Red Lake, Ontario ( #347 Howey St.  
PO Box 707, POV 2M0 ) do hereby certify that:

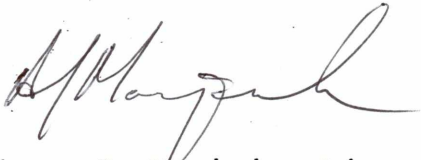
I have been professionally involved in mineral exploration  
for 32 years and have performed the following-

prospecting  
linecutting  
geophysics - magnetometer , H.L., I.P. surveys  
soil/rock/lake bottom sampling  
geological/geophysical mapping  
power stripping  
trenching  
technical reports (author) submitted to clients and MNDM

I have no personal interest in any of the mining claims  
pertaining to this report.

I consider this report to be accurate and true in all respects.

Date: Dec. 12, 2017 in Red Lake, Ontario.



Antony J. Maciejewski  
Permanent Prospectors Lic. # 1000573

APPENDIX " A "

CERTIFICATES of ANALYSIS

## Certificate of Analysis Work Order : RL1703199 [Report File No.: 000025158]

Date: November 14, 2017

To: **ACCOUNTS PAYABLE**  
**CYPRESS DEVELOPMENT CORP**  
1610-777 DUNSMUR STREET  
PO BOX 10427  
VANCOUVER BC V7Y 1K4

P.O. No.: Cypress Development Corp  
Project No.: -  
Samples: 125  
Received: Nov 3, 2017  
Pages: Page 1 to 5  
(Inclusive of Cover Sheet)

### Methods Summary

<u>No. Of Samples</u>	<u>Method Code</u>	<u>Description</u>
125	CRU25	Crush to 85% passing 2mm
125	CRU21	Crush to 75% passing 2mm
125	PUL46	Pulv to 85%, Cr Steel, 75µm, 500g
125	G_WGH79	Sample Weight & Reporting of weights
125	GE_FAA515	Au, FAS, AAS, 50g-5ml
125	GO_FAG505	Au, FAS, Gravimetric, 50g

Certified By : \_\_\_\_\_



Susan Isaac  
Operations Manager

Report Footer:

L.N.R. = Listed not received  
n.a. = Not applicable

I.S. = Insufficient Sample  
-- = No result

\*INF = Composition of this sample makes detection impossible by this method  
M after a result denotes ppb to ppm conversion, % denotes ppm to % conversion

Methods marked with an asterisk (e.g. \*NAA08V) were subcontracted  
Elements marked with the @ symbol (e.g. @Cu) denote assays performed using accredited test methods

This document is issued by the Company under its General Conditions of Service accessible at <http://www.sgs.com/en/Terms-and-Conditions.aspx>. Attention is drawn to the limitation of liability, indemnification and jurisdiction issues defined therein.

**WARNING:** The sample(s) to which the findings recorded herein (the "Findings") relate was (were) drawn and / or provided by the Client or by a third party acting at the Client's direction. The Findings constitute no warranty of the sample's representativity of the goods and strictly relate to the sample (s). The Company accepts no liability with regard to the origin or source from which the sample(s) is/are said to be extracted. The findings report on the samples provided by the client and are not intended for commercial or contractual settlement purposes. Any unauthorized alteration, forgery or falsification of the content or appearance of this document is unlawful and offenders may be prosecuted to the fullest extent of the law.

Element Method Det.Lim. Units	WtKg G_WGH79 0.01 kg	Au@ GE_FAA515 0.005 ppm	Au GO_FAG505 1 ppm
250501	1.43	0.087	
250502	0.85	0.021	
250503	0.91	0.008	
250504	0.80	0.012	
250505	0.36	<0.005	
250506	0.77	<0.005	
250507	0.69	0.005	
250508	0.60	0.128	
250509	0.85	<0.005	
250510	0.59	<0.005	
250511	1.11	<0.005	
250512	1.02	0.037	
250513	0.81	<0.005	
250514	1.20	0.223	
250515	1.00	12.8	18.02
250516	0.51	0.027	
250517	0.81	12.8	16.65
250518	0.73	0.675	
250519	1.37	2.77	
250520	0.55	0.477	
250521	0.59	0.013	
250522	1.34	0.029	
250523	1.45	0.005	
250524	1.33	0.038	
250525	1.30	0.013	
250526	1.43	0.025	
250527	1.05	0.014	
250528	1.30	0.010	
250529	0.76	<0.005	
250530	1.12	<0.005	
250531	0.92	<0.005	
250532	0.97	<0.005	
250533	0.71	<0.005	
250534	0.97	<0.005	
250535	1.54	0.007	
250536	0.28	<0.005	
250537	0.28	0.017	
250538	0.40	<0.005	
250539	0.41	<0.005	
250540	0.41	<0.005	

BLANK

This document is issued by the Company under its General Conditions of Service accessible at <http://www.sgs.com/en/Terms-and-Conditions.aspx>. Attention is drawn to the limitation of liability, indemnification and jurisdiction issues defined therein.

**WARNING:** The sample(s) to which the findings recorded herein (the "Findings") relate was (were) drawn and / or provided by the Client or by a third party acting at the Client's direction. The Findings constitute no warranty of the sample's representativity of the goods and strictly relate to the sample (s). The Company accepts no liability with regard to the origin or source from which the sample(s) is/are said to be extracted. The findings report on the samples provided by the client and are not intended for commercial or contractual settlement purposes. Any unauthorized alteration, forgery or falsification of the content or appearance of this document is unlawful and offenders may be prosecuted to the fullest extent of the law.

Element	WtKg	Au@	Au
Method	G_WGH79	GE_FAA515	GO_FAG505
Det.Lim.	0.01	0.005	1
Units	kg	ppm	ppm
250541	0.78	0.014	--
250542	0.89	0.026	--
250543	0.87	0.024	--
250544	1.29	0.049	--
250545	0.81	0.034	--
250546	1.47	0.078	--
250547	1.32	0.109	--
250548	0.55	0.039	--
250549	0.56	0.011	--
250550	0.81	<0.005	--
250551	0.98	<0.005	--
250552	0.88	<0.005	--
250553	0.52	0.011	--
250554	0.77	0.023	--
250555	0.82	0.019	--
250556	0.66	<0.005	--
250557	0.59	<0.005	--
250558	1.01	<0.005	--
250559	1.27	<0.005	--
250560	0.76	<0.005	--
250561	0.17	0.013	--
250562	0.52	<0.005	--
250563	0.48	0.009	--
250564	0.77	<0.005	--
250565	0.56	0.012	--
250566	0.76	0.087	--
250567	0.65	0.010	--
250568	1.15	0.006	--
250569	1.06	0.021	--
250570	0.83	0.013	--
250571	0.64	0.010	--
250572	0.50	0.006	--
250573	0.54	0.011	--
250574	0.43	0.006	--
250575	0.53	<0.005	--
250576	0.45	<0.005	--
250577	0.32	<0.005	--
250578	0.55	0.076	--
250579	0.87	<0.005	--
250580	0.93	<0.005	--

This document is issued by the Company under its General Conditions of Service accessible at <http://www.sgs.com/en/Terms-and-Conditions.aspx>. Attention is drawn to the limitation of liability, indemnification and jurisdiction issues defined therein.

**WARNING:** The sample(s) to which the findings recorded herein (the "Findings") relate was (were) drawn and / or provided by the Client or by a third party acting at the Client's direction. The Findings constitute no warranty of the sample's representativity of the goods and strictly relate to the sample (s). The Company accepts no liability with regard to the origin or source from which the sample(s) is/are said to be extracted. The findings report on the samples provided by the client and are not intended for commercial or contractual settlement purposes. Any unauthorized alteration, forgery or falsification of the content or appearance of this document is unlawful and offenders may be prosecuted to the fullest extent of the law.



Element	WtKg	Au@	Au
Method	G_WGH79	GE_FAA515	GO_FAG505
Det.Lim.	0.01	0.005	1
Units	kg	ppm	ppm
250581	0.83	0.040	--
250582	1.16	<0.005	--
250583	0.84	<0.005	--
250584	1.26	<0.005	--
250585	0.69	<0.005	--
250586	0.60	<0.005	--
250587	0.89	<0.005	--
250588	1.10	<0.005	--
250589	1.24	<0.005	--
250590	0.28	<0.005	--
250591	0.89	<0.005	--
250592	0.89	0.035	--
250593	1.17	<0.005	--
250594	0.79	<0.005	--
250595	1.43	<0.005	--
250596	0.90	<0.005	--
250597	1.67	<0.005	--
250598	1.11	<0.005	--
250599	1.88	<0.005	--
250600	1.04	<0.005	--
250601	0.53	<0.005	--
250602	0.35	<0.005	--
250603	0.63	<0.005	--
250604	0.51	<0.005	--
250605	1.01	<0.005	--
250606	0.69	<0.005	--
250607	0.65	0.007	--
250608	0.88	0.011	--
250609	0.81	0.010	--
250610	1.24	<0.005	--
250611	0.60	0.006	--
250612	0.55	0.006	--
250613	0.90	<0.005	--
250614	0.81	0.006	--
250615	0.57	<0.005	--
250616	1.18	<0.005	--
250617	0.57	<0.005	--
250618	0.61	<0.005	--
250619	1.30	0.023	--
250634	0.31	<0.005	--

This document is issued by the Company under its General Conditions of Service accessible at <http://www.sgs.com/en/Terms-and-Conditions.aspx>. Attention is drawn to the limitation of liability, indemnification and jurisdiction issues defined therein.

**WARNING:** The sample(s) to which the findings recorded herein (the "Findings") relate was (were) drawn and / or provided by the Client or by a third party acting at the Client's direction. The Findings constitute no warranty of the sample's representativity of the goods and strictly relate to the sample (s). The Company accepts no liability with regard to the origin or source from which the sample(s) is/are said to be extracted. The findings report on the samples provided by the client and are not intended for commercial or contractual settlement purposes. Any unauthorized alteration, forgery or falsification of the content or appearance of this document is unlawful and offenders may be prosecuted to the fullest extent of the law.

Element	WtKg	Au@	Au
Method	G_WGH79	GE_FAA515	GO_FAG505
Det.Lim.	0.01	0.005	1
Units	kg	ppm	ppm
250635	1.26	<0.005	--
250636	1.04	<0.005	--
250637	1.11	<0.005	--
250638	0.65	<0.005	--
250639	1.27	0.008	--
*Rep 250531		<0.005	--
*Rep 250542		0.024	--
*Rep 250584		<0.005	--
*Rep 250616		<0.005	--
*Rep 250537			--
*Rep 250554			--
*Rep 250591			--
*Rep 250602			--

This document is issued by the Company under its General Conditions of Service accessible at <http://www.sgs.com/en/Terms-and-Conditions.aspx>. Attention is drawn to the limitation of liability, indemnification and jurisdiction issues defined therein.

**WARNING:** The sample(s) to which the findings recorded herein (the "Findings") relate was (were) drawn and / or provided by the Client or by a third party acting at the Client's direction. The Findings constitute no warranty of the sample's representativity of the goods and strictly relate to the sample (s). The Company accepts no liability with regard to the origin or source from which the sample(s) is/are said to be extracted. The findings report on the samples provided by the client and are not intended for commercial or contractual settlement purposes. Any unauthorized alteration, forgery or falsification of the content or appearance of this document is unlawful and offenders may be prosecuted to the fullest extent of the law.

## Certificate of Analysis Work Order : RL1703053 [Report File No.: 000024923]

Date: October 27, 2017

To: ACCOUNTS PAYABLE  
CYPRESS DEVELOPMENT CORP  
1610-777 DUNSMUR STREET  
PO BOX 10427  
VANCOUVER BC V7Y 1K4

P.O. No.: -  
Project No.: -  
Samples: 14  
Received: Oct 24, 2017  
Pages: Page 1 to 2  
(Inclusive of Cover Sheet)


### Methods Summary

<u>No. Of Samples</u>	<u>Method Code</u>	<u>Description</u>
14	CRU21	Crush to 75% passing 2mm
14	PUL46	Pulv to 85%, Cr Steel, 75µm, 500g
14	G_WGH79	Sample Weight & Reporting of weights
14	GE_FAA515	Au, FAS, AAS, 50g-10ml
14	GO_FAG505	Au, FAS, Gravimetric, 50g

### Comments:

Job started once payment confirmed on Oct. 25, 2017.

Certified By : \_\_\_\_\_

  
Susan Isaac  
Operations Manager

### Report Footer:

L.N.R. = Listed not received  
n.a. = Not applicable

I.S. = Insufficient Sample  
-- = No result

\*INF = Composition of this sample makes detection impossible by this method  
M after a result denotes ppb to ppm conversion, % denotes ppm to % conversion

Methods marked with an asterisk (e.g. \*NAA08V) were subcontracted

Elements marked with the @ symbol (e.g. @Cu) denote assays performed using accredited test methods

This document is issued by the Company under its General Conditions of Service accessible at <http://www.sgs.com/en/Terms-and-Conditions.aspx>. Attention is drawn to the limitation of liability, indemnification and jurisdiction issues defined therein.

**WARNING:** The sample(s) to which the findings recorded herein (the "Findings") relate was (were) drawn and / or provided by the Client or by a third party acting at the Client's direction. The Findings constitute no warranty of the sample's representativity of the goods and strictly relate to the sample (s). The Company accepts no liability with regard to the origin or source from which the sample(s) is/are said to be extracted. The findings report on the samples provided by the client and are not intended for commercial or contractual settlement purposes. Any unauthorized alteration, forgery or falsification of the content or appearance of this document is unlawful and offenders may be prosecuted to the fullest extent of the law.

Element	WtKg	Au@	Au
Method	G_WGH79	GE_FAA515	GO_FAG505
Det.Lim.	0.01	0.005	0.5
Units	kg	ppm	ppm
250620	0.68	<0.005	<0.50
250621	0.44	<0.005	<0.50
250622	0.41	<0.005	<0.50
250623	0.81	<0.005	<0.50
250624	1.06	>10.0	68.03
250625	0.89	0.075	<0.50
250626	0.84	0.006	<0.50
250627	1.31	>10.0	53.01
250628	0.92	>10.0	114.57
250629	1.50	>10.0	115.20
250630	1.14	>10.0	142.49
250631	0.96	>10.0	9.37
250632	1.72	>10.0	93.91
250633	0.96	>10.0	331.14
*Rep 250622		0.009	
*Rep 250623			<0.50

This document is issued by the Company under its General Conditions of Service accessible at <http://www.sgs.com/en/Terms-and-Conditions.aspx>. Attention is drawn to the limitation of liability, indemnification and jurisdiction issues defined therein.

**WARNING:** The sample(s) to which the findings recorded herein (the "Findings") relate was (were) drawn and / or provided by the Client or by a third party acting at the Client's direction. The Findings constitute no warranty of the sample's representativity of the goods and strictly relate to the sample (s). The Company accepts no liability with regard to the origin or source from which the sample(s) is/are said to be extracted. The findings report on the samples provided by the client and are not intended for commercial or contractual settlement purposes. Any unauthorized alteration, forgery or falsification of the content or appearance of this document is unlawful and offenders may be prosecuted to the fullest extent of the law .



**Certificate of Analysis**  
**Work Order : RL1703053**  
**[Report File No.: 000026538]**

Date: December 11, 2017

To: **Don Houston**  
**CYPRESS DEVELOPMENT CORP**  
 1610-777 DUNSMUR STREET  
 PO BOX 10427  
 VANCOUVER BC V7Y 1K4

P.O. No.: 14 samples  
 Project No.: -  
 Samples: 14  
 Received: Nov 9, 2017  
 Pages: Page 1 to 6  
 (Inclusive of Cover Sheet)

**Methods Summary**

<u>No. Of Samples</u>	<u>Method Code</u>	<u>Description</u>
14	G_LOG02	Pre-preparation processing, sorting, logging, boxing
14	GE_ICP14B	Aqua Regia digestion/ICP-AES package
4	GO_ICP13B	Ore Grade, Aqua Regia Diges/ICP-AES

**Storage: Pulp & Reject**

PULP STORAGE : RETURN AFTER 90 DAYS

Certified By :



John Chiang  
 QC Chemist

*SGS Minerals Services Geochemistry Vancouver conforms to the requirements of ISO/IEC 17025 for specific tests as listed on their scope of accreditation which can be found at <http://www.scc.ca/en/search/palcan/sgs>*

Report Footer:

L.N.R. = Listed not received  
 n.a. = Not applicable  
 I.S. = Insufficient Sample  
 - = No result  
 \*INF = Composition of this sample makes detection impossible by this method  
 M after a result denotes ppb to ppm conversion, % denotes ppm to % conversion  
 Methods marked with an asterisk (e.g. \*NAA08V) were subcontracted  
 Elements marked with the @ symbol (e.g. @Cu) denote assays performed using accredited test methods

This document is issued by the Company under its General Conditions of Service accessible at <http://www.sgs.com/en/Terms-and-Conditions.aspx>. Attention is drawn to the limitation of liability, indemnification and jurisdiction issues defined therein.

**WARNING:** The sample(s) to which the findings recorded herein (the "Findings") relate was (were) drawn and / or provided by the Client or by a third party acting at the Client's direction. The Findings constitute no warranty of the sample's representativity of the goods and strictly relate to the sample (s). The Company accepts no liability with regard to the origin or source from which the sample(s) is/are said to be extracted. The findings report on the samples provided by the client and are not intended for commercial or contractual settlement purposes. Any unauthorized alteration, forgery or falsification of the content or appearance of this document is unlawful and offenders may be prosecuted to the fullest extent of the law .

Element Method Det.Lim. Units	@Ag GE_ICP14B 2 ppm	@Al GE_ICP14B 0.01 %	@As GE_ICP14B 3 ppm	@Ba GE_ICP14B 5 ppm	@Be GE_ICP14B 0.5 ppm	@Bi GE_ICP14B 5 ppm	@Ca GE_ICP14B 0.01 %	@Cd GE_ICP14B 1 ppm
	250620	<2	0.53	5	65	<0.5	<5	0.90
250621	<2	0.58	6	74	<0.5	<5	0.47	<1
250622	<2	0.30	<3	50	<0.5	<5	2.53	<1
250623	<2	0.33	3	48	<0.5	<5	1.05	<1
250624	20	0.15	<3	19	<0.5	<5	0.28	<1
250625	<2	0.41	4	40	<0.5	<5	0.73	<1
250626	<2	0.90	<3	103	<0.5	<5	0.71	<1
250627	32	0.18	5	18	<0.5	<5	0.50	<1
250628	14	0.13	4	10	<0.5	<5	0.21	<1
250629	22	0.16	7	23	<0.5	<5	0.46	<1
250630	>100	0.12	7	15	<0.5	<5	0.33	<1
250631	21	0.33	<3	37	<0.5	<5	0.81	<1
250632	8	0.10	3	15	<0.5	<5	0.29	<1
250633	71	0.04	16	12	<0.5	<5	0.09	1
*Rep 250623	<2	0.34	3	48	<0.5	<5	1.03	<1
*Std OREAS502B	<2	1.88	14	305	<0.5	<5	1.09	<1
*Blk BLANK	<2	<0.01	<3	<5	<0.5	<5	<0.01	<1
*Rep 250624	7	N.A.	N.A.	N.A.	N.A.	N.A.	N.A.	N.A.
*Rep 250624	7	N.A.	N.A.	N.A.	N.A.	N.A.	N.A.	N.A.
*Rep 250627	22	N.A.	N.A.	N.A.	N.A.	N.A.	N.A.	N.A.
*Rep 250627	12	N.A.	N.A.	N.A.	N.A.	N.A.	N.A.	N.A.
*Rep 250629	14	N.A.	N.A.	N.A.	N.A.	N.A.	N.A.	N.A.
*Rep 250630	65	N.A.	N.A.	N.A.	N.A.	N.A.	N.A.	N.A.
*Rep 250631	<2	N.A.	N.A.	N.A.	N.A.	N.A.	N.A.	N.A.
*Rep 250631	<2	N.A.	N.A.	N.A.	N.A.	N.A.	N.A.	N.A.
*Rep 250633	98	N.A.	N.A.	N.A.	N.A.	N.A.	N.A.	N.A.

This document is issued by the Company under its General Conditions of Service accessible at <http://www.sgs.com/en/Terms-and-Conditions.aspx>. Attention is drawn to the limitation of liability, indemnification and jurisdiction issues defined therein.

**WARNING:** The sample(s) to which the findings recorded herein (the "Findings") relate was (were) drawn and / or provided by the Client or by a third party acting at the Client's direction. The Findings constitute no warranty of the sample's representativity of the goods and strictly relate to the sample (s). The Company accepts no liability with regard to the origin or source from which the sample(s) is/are said to be extracted. The findings report on the samples provided by the client and are not intended for commercial or contractual settlement purposes. Any unauthorized alteration, forgery or falsification of the content or appearance of this document is unlawful and offenders may be prosecuted to the fullest extent of the law.

Element Method Det.Lim. Units	@Co GE_ICP14B 1 ppm	@Cr GE_ICP14B 1 ppm	@Cu GE_ICP14B 0.5 ppm	@Fe GE_ICP14B 0.01 %	@Hg GE_ICP14B 1 ppm	@K GE_ICP14B 0.01 %	@La GE_ICP14B 0.5 ppm	@Li GE_ICP14B 1 ppm
250620	6	13	33.8	1.72	<1	0.23	24.1	7
250621	4	13	85.6	1.43	<1	0.29	26.3	6
250622	3	19	175	2.66	<1	0.18	18.9	3
250623	2	13	322	1.60	<1	0.17	19.0	4
250624	1	18	783	0.86	<1	0.07	9.7	2
250625	4	16	69.7	1.35	<1	0.15	20.2	6
250626	7	17	52.2	2.13	<1	0.36	27.3	20
250627	3	18	2650	1.07	<1	0.06	6.5	2
250628	3	17	>10000	2.07	<1	0.02	1.4	3
250629	6	27	>10000	2.31	<1	0.08	5.2	1
250630	3	22	>10000	2.59	<1	0.04	3.0	2
250631	2	20	642	1.09	<1	0.14	19.1	4
250632	4	17	2620	0.95	<1	0.05	5.1	1
250633	8	22	>10000	3.23	<1	0.03	1.9	<1
*Rep 250623	2	13	335	1.56	<1	0.17	19.0	4
*Std OREAS502B	22	79	7570	5.35	<1	0.97	26.0	28
*Blk BLANK	<1	<1	<0.5	<0.01	<1	<0.01	<0.5	<1
*Rep 250624	N.A.	N.A.	N.A.	N.A.	N.A.	N.A.	N.A.	N.A.
*Rep 250624	N.A.	N.A.	N.A.	N.A.	N.A.	N.A.	N.A.	N.A.
*Rep 250627	N.A.	N.A.	N.A.	N.A.	N.A.	N.A.	N.A.	N.A.
*Rep 250627	N.A.	N.A.	N.A.	N.A.	N.A.	N.A.	N.A.	N.A.
*Rep 250629	N.A.	N.A.	N.A.	N.A.	N.A.	N.A.	N.A.	N.A.
*Rep 250630	N.A.	N.A.	N.A.	N.A.	N.A.	N.A.	N.A.	N.A.
*Rep 250631	N.A.	N.A.	N.A.	N.A.	N.A.	N.A.	N.A.	N.A.
*Rep 250631	N.A.	N.A.	N.A.	N.A.	N.A.	N.A.	N.A.	N.A.
*Rep 250633	N.A.	N.A.	N.A.	N.A.	N.A.	N.A.	N.A.	N.A.

This document is issued by the Company under its General Conditions of Service accessible at <http://www.sgs.com/en/Terms-and-Conditions.aspx>. Attention is drawn to the limitation of liability, indemnification and jurisdiction issues defined therein.

**WARNING:** The sample(s) to which the findings recorded herein (the "Findings") relate was (were) drawn and / or provided by the Client or by a third party acting at the Client's direction. The Findings constitute no warranty of the sample's representativity of the goods and strictly relate to the sample (s). The Company accepts no liability with regard to the origin or source from which the sample(s) is/are said to be extracted. The findings report on the samples provided by the client and are not intended for commercial or contractual settlement purposes. Any unauthorized alteration, forgery or falsification of the content or appearance of this document is unlawful and offenders may be prosecuted to the fullest extent of the law .

Element Method Det.Lim. Units	@Mg	@Mn	@Mo	@Na	@Ni	@P	@Pb	@S
	GE_ICP14B 0.01 %	GE_ICP14B 2 ppm	GE_ICP14B 1 ppm	GE_ICP14B 0.01 %	GE_ICP14B 1 ppm	GE_ICP14B 0.01 %	GE_ICP14B 2 ppm	GE_ICP14B 0.01 %
250620	0.24	460	2	0.05	9	0.05	5	0.07
250621	0.17	361	2	0.06	8	0.04	6	0.03
250622	0.65	1140	2	0.06	7	0.03	5	0.01
250623	0.30	484	2	0.05	5	0.04	3	0.03
250624	0.05	141	2	0.03	4	0.01	<2	0.13
250625	0.19	395	2	0.04	7	0.03	3	0.03
250626	0.58	331	1	0.05	10	0.05	4	<0.01
250627	0.09	208	2	0.02	6	0.02	5	0.33
250628	0.07	129	2	0.01	7	<0.01	5	1.46
250629	0.05	177	2	0.02	10	0.01	6	1.58
250630	0.07	197	2	0.02	10	<0.01	11	1.52
250631	0.13	286	2	0.04	6	0.04	3	0.08
250632	0.03	119	2	0.02	5	0.01	19	0.50
250633	0.01	100	2	0.01	13	<0.01	15	2.64
*Rep 250623	0.30	496	2	0.05	6	0.04	3	0.03
*Std OREAS502B	1.26	405	227	0.15	36	0.12	22	0.98
*Blk BLANK	<0.01	<2	<1	<0.01	<1	<0.01	<2	<0.01
*Rep 250624	N.A.	N.A.	N.A.	N.A.	N.A.	N.A.	N.A.	N.A.
*Rep 250624	N.A.	N.A.	N.A.	N.A.	N.A.	N.A.	N.A.	N.A.
*Rep 250627	N.A.	N.A.	N.A.	N.A.	N.A.	N.A.	N.A.	N.A.
*Rep 250627	N.A.	N.A.	N.A.	N.A.	N.A.	N.A.	N.A.	N.A.
*Rep 250629	N.A.	N.A.	N.A.	N.A.	N.A.	N.A.	N.A.	N.A.
*Rep 250630	N.A.	N.A.	N.A.	N.A.	N.A.	N.A.	N.A.	N.A.
*Rep 250631	N.A.	N.A.	N.A.	N.A.	N.A.	N.A.	N.A.	N.A.
*Rep 250631	N.A.	N.A.	N.A.	N.A.	N.A.	N.A.	N.A.	N.A.
*Rep 250633	N.A.	N.A.	N.A.	N.A.	N.A.	N.A.	N.A.	N.A.

This document is issued by the Company under its General Conditions of Service accessible at <http://www.sgs.com/en/Terms-and-Conditions.aspx>. Attention is drawn to the limitation of liability, indemnification and jurisdiction issues defined therein.

**WARNING:** The sample(s) to which the findings recorded herein (the "Findings") relate was (were) drawn and / or provided by the Client or by a third party acting at the Client's direction. The Findings constitute no warranty of the sample's representativity of the goods and strictly relate to the sample (s). The Company accepts no liability with regard to the origin or source from which the sample(s) is/are said to be extracted. The findings report on the samples provided by the client and are not intended for commercial or contractual settlement purposes. Any unauthorized alteration, forgery or falsification of the content or appearance of this document is unlawful and offenders may be prosecuted to the fullest extent of the law.



Element Method Det.Lim. Units	@Sb GE_ICP14B 5 ppm	@Sc GE_ICP14B 0.5 ppm	@Sn GE_ICP14B 10 ppm	@Sr GE_ICP14B 0.5 ppm	@Ti GE_ICP14B 0.01 %	@V GE_ICP14B 1 ppm	@W GE_ICP14B 10 ppm	@Y GE_ICP14B 0.5 ppm
250620	<5	0.9	<10	22.6	0.02	8	<10	9.4
250621	<5	0.9	<10	12.7	0.02	6	<10	8.5
250622	<5	1.4	<10	72.2	0.02	4	<10	10.3
250623	<5	0.9	<10	31.0	0.03	6	<10	7.7
250624	<5	<0.5	<10	9.9	<0.01	2	<10	2.3
250625	<5	0.9	<10	14.7	0.02	6	<10	7.0
250626	<5	2.5	<10	27.4	0.10	24	<10	9.6
250627	<5	<0.5	<10	9.1	<0.01	2	<10	2.7
250628	<5	<0.5	<10	9.7	<0.01	2	<10	1.1
250629	<5	<0.5	<10	14.3	<0.01	1	<10	2.6
250630	<5	<0.5	<10	10.2	<0.01	2	<10	1.6
250631	<5	0.7	<10	18.4	0.01	4	<10	6.1
250632	<5	<0.5	<10	6.8	<0.01	<1	<10	2.1
250633	<5	<0.5	<10	3.9	<0.01	<1	<10	0.8
*Rep 250623	<5	1.0	<10	31.5	0.03	6	<10	7.7
*Std OREAS502B	<5	7.3	<10	70.5	0.33	121	<10	14.2
*Blk BLANK	<5	<0.5	<10	<0.5	<0.01	<1	<10	<0.5
*Rep 250624	N.A.	N.A.	N.A.	N.A.	N.A.	N.A.	N.A.	N.A.
*Rep 250624	N.A.	N.A.	N.A.	N.A.	N.A.	N.A.	N.A.	N.A.
*Rep 250627	N.A.	N.A.	N.A.	N.A.	N.A.	N.A.	N.A.	N.A.
*Rep 250627	N.A.	N.A.	N.A.	N.A.	N.A.	N.A.	N.A.	N.A.
*Rep 250629	N.A.	N.A.	N.A.	N.A.	N.A.	N.A.	N.A.	N.A.
*Rep 250630	N.A.	N.A.	N.A.	N.A.	N.A.	N.A.	N.A.	N.A.
*Rep 250631	N.A.	N.A.	N.A.	N.A.	N.A.	N.A.	N.A.	N.A.
*Rep 250631	N.A.	N.A.	N.A.	N.A.	N.A.	N.A.	N.A.	N.A.
*Rep 250633	N.A.	N.A.	N.A.	N.A.	N.A.	N.A.	N.A.	N.A.

This document is issued by the Company under its General Conditions of Service accessible at <http://www.sgs.com/en/Terms-and-Conditions.aspx>. Attention is drawn to the limitation of liability, indemnification and jurisdiction issues defined therein.

**WARNING:** The sample(s) to which the findings recorded herein (the "Findings") relate was (were) drawn and / or provided by the Client or by a third party acting at the Client's direction. The Findings constitute no warranty of the sample's representativity of the goods and strictly relate to the sample (s). The Company accepts no liability with regard to the origin or source from which the sample(s) is/are said to be extracted. The findings report on the samples provided by the client and are not intended for commercial or contractual settlement purposes. Any unauthorized alteration, forgery or falsification of the content or appearance of this document is unlawful and offenders may be prosecuted to the fullest extent of the law.

Element Method Det.Lim. Units	@Zn	@Zr	Ag	Cu
	GE_ICP14B 1 ppm	GE_ICP14B 0.5 ppm	GO_ICP13B 0.01 %	GO_ICP13B 0.01 %
250620	24	11.3	N.A.	N.A.
250621	20	12.0	N.A.	N.A.
250622	33	7.1	N.A.	N.A.
250623	45	8.7	N.A.	N.A.
250624	8	3.2	N.A.	N.A.
250625	22	6.9	N.A.	N.A.
250626	49	11.1	N.A.	N.A.
250627	15	3.0	N.A.	N.A.
250628	32	1.3	N.A.	1.43
250629	19	3.0	N.A.	1.15
250630	20	1.8	<0.01	1.38
250631	15	6.6	N.A.	N.A.
250632	13	2.6	N.A.	N.A.
250633	67	1.6	N.A.	1.96
*Rep 250623	48	9.1		
*Std OREAS502B	114	12.1		
*Blk BLANK	<1	<0.5		
*Rep 250630			<0.01	1.34
*Std AMIS0268			0.02	N.A.
*Std OREAS930			N.A.	2.62
*Blk BLANK			<0.01	<0.01
*Rep 250630			<0.01	N.A.
*Rep 250630			<0.01	N.A.
*Rep 250624	N.A.	N.A.		
*Rep 250624	N.A.	N.A.		
*Rep 250627	N.A.	N.A.		
*Rep 250627	N.A.	N.A.		
*Rep 250629	N.A.	N.A.		
*Rep 250630	N.A.	N.A.		
*Rep 250631	N.A.	N.A.		
*Rep 250631	N.A.	N.A.		
*Rep 250633	N.A.	N.A.		

This document is issued by the Company under its General Conditions of Service accessible at <http://www.sgs.com/en/Terms-and-Conditions.aspx>. Attention is drawn to the limitation of liability, indemnification and jurisdiction issues defined therein.

**WARNING:** The sample(s) to which the findings recorded herein (the "Findings") relate was (were) drawn and / or provided by the Client or by a third party acting at the Client's direction. The Findings constitute no warranty of the sample's representativity of the goods and strictly relate to the sample (s). The Company accepts no liability with regard to the origin or source from which the sample(s) is/are said to be extracted. The findings report on the samples provided by the client and are not intended for commercial or contractual settlement purposes. Any unauthorized alteration, forgery or falsification of the content or appearance of this document is unlawful and offenders may be prosecuted to the fullest extent of the law.