

We are committed to providing [accessible customer service](#).  
If you need accessible formats or communications supports, please [contact us](#).

Nous tenons à améliorer [l'accessibilité des services à la clientèle](#).  
Si vous avez besoin de formats accessibles ou d'aide à la communication, veuillez [nous contacter](#).

RMOTRENCHINGREPORT

December 1, 2017

TRENCHING AND PROSPECTING REPORT

M. TREMBLAY OPTION

RAINY MOUNTAIN ROYALTY CORP.

BRUNSWICK TOWNSHIP

PORCUPINE MINING DIVISON

R. S. MIDDLETON PENG

December 1, 2017

TABLE OF CONTENTS	1
INTRODUCTION	2
PROPERTY	2
List of Claims	3
Claim Continuity, Prospecting Sample Location Map	4
LOCATION AND ACCESS	5
Location Map	6
PROSPECTING	5
Table of Prospecting Samples	7
TRENCHING	5
SAMPLE LIST	9
COST BREAKDOWN	11
REFERENCES	12
STATEMENT OF QUALIFICATIONS	13
APPENDIX	14
ASSAY CERTIFICATES	15
BRUNSWICK IP TARGETS, DRILL PLAN AND TRENCH LOCATION MAP	55
IP FULL GRID MAP	56
PROSPECTING SAMPLE MAPS	57
INDIVIDUAL SKETCHES OF TRENCHES	61
TRENCH PHOTOS	63
RECEIPTS FOR COSTS FOR TRENCHING PROGRAM	70
EXPLORATION PERMITS	97

## INTRODUCTION

Initial work by Rainy Mountain Royalty in Brunswick Twp. was done in October-November, 2016 with line cutting of 13 lines 49000E to 50300E and TL9000N and 11000N with base line (BL) 10000N, followed by geological mapping, prospecting, surface outcrop sampling, and a deep IP survey N=1-20, "a" = 25m. The IP work was filed December 2, 2016 which gave one year's credit to the whole property. A Prospecting report was filed in January, 2017 once all assays had been received. See Coles, P., Middleton, R.S (2016), and Tremblay, M., Middleton. R. (2017). Extension IP lines were also read on the east grid and filed on September 10, 2017, see J Grant (2017).

A series of east west trending IP anomalies were outlined by the IP which corresponded to iron carbonate-sericite altered shear zones all parallel or sub parallel to the Ridout Fault. One Gold showing had been exposed by previous trenching on line 49800, 102+50N and had grab samples of 32.9, 3.77, 2.82, and 3.13 grams Au per tonne.

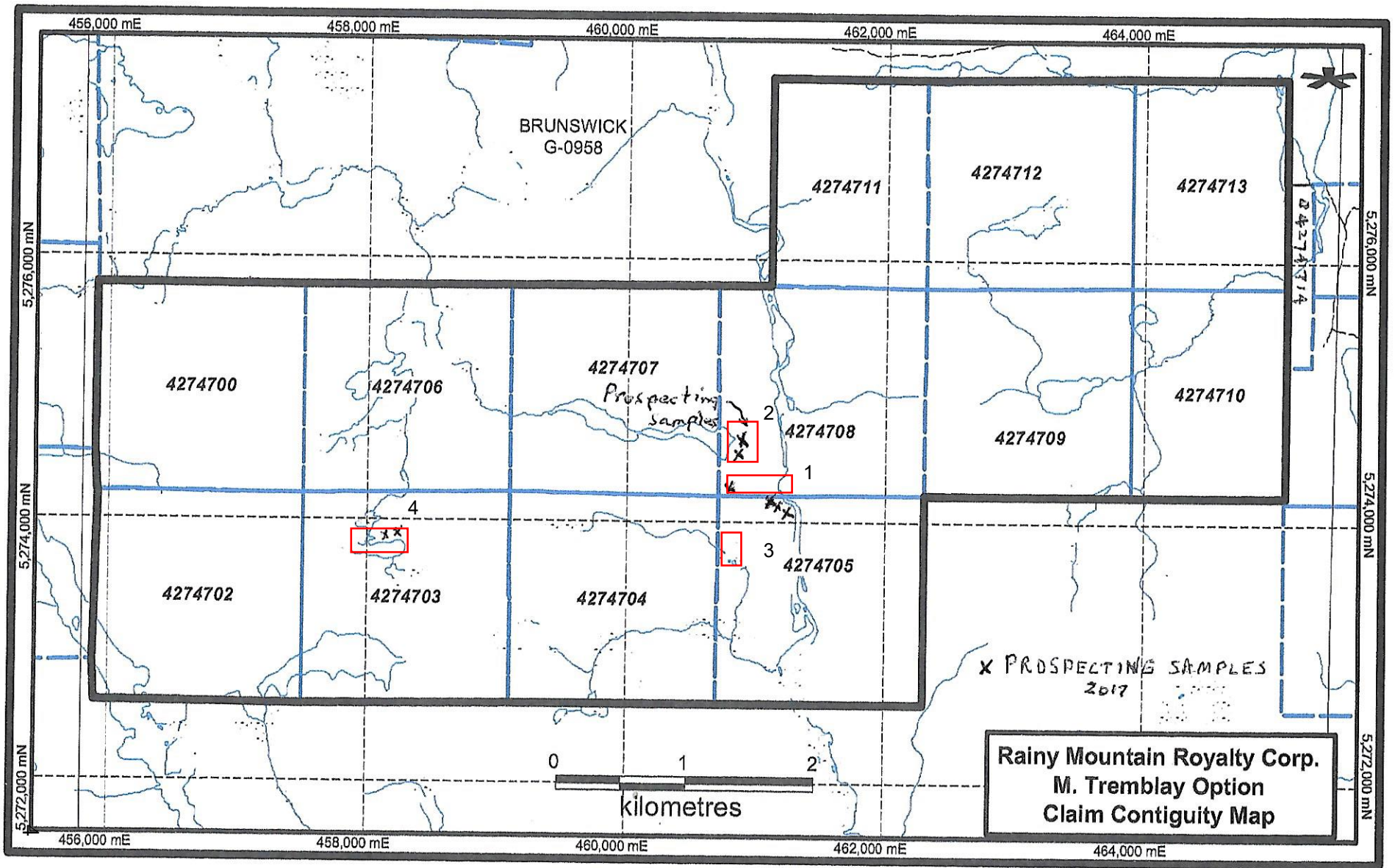
Drill follow-up was done in June, 2017 to test 5 of these anomaly trends on the east grid with one hole each (BE17-01 to 05), and 4 holes were drilled to test the gold showing (BE 17-06 to 09) at 50m intervals. This left untested IP anomalies which were in shallow overburden, therefore a trenching program was initiated in August 2017 to expose the IP trend extending west of the original gold showing as well as the IP zone extending either side of hole BE17-04 on line 50000E, intercept at 97+00N.

## PROPERTY

The property consists of 198 claim units listed below and are shown on the Claim Continuity Map below. The attached table of the claims is taken from the MNDM client list from the MNDM web site.

**PORCUPINE Mining Division**

<b>Township/Area</b>	<b>Claim Number</b>	<b>Recording Date</b>	<b>Claim Due Date</b>	<b>Claim Units</b>	<b>Percent Option</b>	<b>Work Required</b>	<b>Total Applied</b>	<b>Total Reserve</b>	<b>Claim Bank</b>
BRUNSWICK (G-0958)	<a href="#">4274700</a>	2014-Apr-09	2018-APR-09	16	100 %	\$ 6,400	\$12,800	\$ 0	\$ 0
BRUNSWICK (G-0958)	<a href="#">4274702</a>	2014-Apr-09	2018-APR-09	16	100 %	\$ 6,400	\$12,800	\$ 0	\$ 0
BRUNSWICK (G-0958)	<a href="#">4274703</a>	2014-Apr-09	2018-APR-09	16	100 %	\$ 6,400	\$12,800	\$ 0	\$ 0
BRUNSWICK (G-0958)	<a href="#">4274704</a>	2014-Apr-09	2018-APR-09	16	100 %	\$ 6,400	\$12,800	\$ 0	\$ 0
BRUNSWICK (G-0958)	<a href="#">4274705</a>	2014-Apr-09	2018-APR-09	16	100 %	\$ 6,400	\$12,800	\$ 0	\$ 0
BRUNSWICK (G-0958)	<a href="#">4274706</a>	2014-Apr-09	2018-APR-09	16	100 %	\$ 6,400	\$12,800	\$ 0	\$ 0
BRUNSWICK (G-0958)	<a href="#">4274707</a>	2014-Apr-09	2018-APR-09	16	100 %	\$ 6,400	\$12,800	\$ 0	\$ 0
BRUNSWICK (G-0958)	<a href="#">4274708</a>	2014-Apr-09	2018-APR-09	16	100 %	\$ 6,400	\$12,800	\$ 0	\$ 0
BRUNSWICK (G-0958)	<a href="#">4274709</a>	2014-Apr-09	2018-APR-09	16	100 %	\$ 6,400	\$12,800	\$ 0	\$ 0
BRUNSWICK (G-0958)	<a href="#">4274710</a>	2014-Apr-09	2018-APR-09	12	100 %	\$ 4,800	\$9,600	\$ 0	\$ 0
BRUNSWICK (G-0958)	<a href="#">4274711</a>	2014-Apr-09	2018-APR-09	12	100 %	\$ 4,800	\$9,600	\$ 1,986	\$ 0
BRUNSWICK (G-0958)	<a href="#">4274712</a>	2014-Apr-09	2018-APR-09	16	100 %	\$ 6,400	\$12,800	\$ 0	\$ 0
BRUNSWICK (G-0958)	<a href="#">4274713</a>	2014-Apr-09	2018-APR-09	12	100 %	\$ 4,800	\$9,600	\$ 0	\$ 0
BRUNSWICK (G-0958)	<a href="#">04274714</a>	2014-Apr-09	2019-JAN-19	2	100 %	\$ 800	\$0	\$ 0	\$ 0



## LOCATION AND ACCESS

The Brunswick property is located in Brunswick Twp. approximately 110 km south of Timmins, Ontario. Access is via Hwy 144 on Hwy 560 going east to a gravel road following a major powerline 35 km east of Hwy 144 or 19 km west of the village of Shiningtree and then traveling north 22 km to the East grid. Another road called Londonderry 27 km east of Hwy 144 gives access to the West Grid 18 km north.

## PROSPECTING

The east side of the West Grid was prospected by Mike Tremblay in June 2017 where 13 samples were collected and analysed (see sample list and claim maps above and prospecting sample maps in appendix for locations). This is in the area of lines 48500-48800E, and the area was revisited in September 2017 where more samples were gathered. Assays of 6.6 gm Au, 4.05 gm Au, and 2.57 gm were found in quartz vein material containing chalcopyrite, in sheared volcanic tuffs .

The following table of Prospecting Samples shows the location of each sample taken by Mike Tremblay in June and September, 2017.

## TRENCHING

Two excavators were used in August, 2017 to dig the trenches due to lack of availability. Brushing out the small undergrowth was carried out by Dominik Coyne who guided the back how operator to the correct locations, and later washed the trenches. The Trench locations are as follows and are marked on the accompanying map . The detailed sketches are shown on separate plan sketches in this report.

Trench Locations: (see map for locations)

49000E	102+20N	Bedrock
49100E	101+50N	Bedrock (see photos attached)
49300E	101+50N	No bedrock
49400E	101+50N	No Bedrock
50100E	97+00N	Bedrock
50000E	97+00N	Bedrock
49800E	97+00N	Bedrock
49900E	97+00N	Bedrock

#  
#  
#  
#  
#  
#  
#



#



Sample Lists and locations on attached tables to follow:

SAMPLE LISTS attached

COST BREAKDOWN attached

Assay certificates are in the appendix as follows:

Assay certificates Prospecting Mike Tremblay

TM17192908	2 rocks	
TM17189134	3 rocks	
TM17124104	17 rocks	(June work on west side grid)
TM17169935	13 rocks	(August work on west side)

Assay Certificates Trenches

TM17181611	8 rocks	
TM17188308	14 rocks	
TM17184224	12 rocks	

Respectfully Submitted,

R. S. Middleton P.Eng.

December 1, 2017

## Table of Prospecting Samples

<b>Sample #</b>	<b>Easting</b>	<b>Northing</b>
V904951	460777	5274514
V904952	460771	5274523
V904953	460780	5274525
V904954	460778	5274526
V904955	460780	5274552
V904956	460780	5274552
V904957	460820	5274612
V904958	460820	5274612
V904959	460806	5274647
V904960	461163	5274312
V904961	461163	5274312
V904962	461163	5274312
V904963	461163	5274312
V905451	461167	5274303
V905452	461176	5274358
V905453	461159	5274364
V905454	460920	5274304
V905455	460920	5274304
V905456	460920	5274304
V905457	460920	5274304
V905458	460700	5273903
V905459	460700	5273903
V905460	458208	5273834
V905461	458203	5273815
V905462	458175	5273821
V905463	458095	5273832
V905464	458019	5273849
V905465	458042	5273859
V905466	458035	5273858
V905467	458028	5273866

## Trenchsamples2017a

## TRENCH SAMPLES

Date	Sample Number	Line	Station	UTM Eastings	UTM Northings
Aug. 20	V 904096	490E	102+00N	461305	5276181
Aug. 20	V 904097	490E	102+20N	461330	5276212
Aug. 20	V 904098	490E	102+50N	461330	5276220
Aug. 26	V 904099	490E	101+85N	461330	5276147
Aug. 26	V 904100	490E	102+20N	461330	5276192
Aug. 27	V 904015	490E	102+20N	461330	5276187
Aug. 27	V 904016	490E	102+00N	461329	5276189
Aug. 27	V 904017	490E	102+00N	461330	5276192
Aug. 29	V 904018	491+25E	101+50N	461432	5276165
Aug. 29	V 904019	491+25E	101+50N	461432	5276165
Aug. 29	V 904020			461448	5276146
Aug. 29	V 904021	10m W of 20		461438	5276146
Aug. 29	V 904022	10m N of 20		461448	5276156
Aug. 29	V 904023	501+00E	97+00N		
Aug. 29	V 904024	501+00E	97+00N		
Aug. 29	V 904025	500+65E	97+00N		
Aug. 30	V 904026	498+00E	97+00N	462128	5275712
Aug. 30	V 904027	498+00E	97+00N	462121	5275725
Aug. 30	V 904028	498+00E	97+00N	462132	5275715
Aug. 30	V 904029	498+00E	97+00N	461132	5275712

## TrenchSamples2017B

## TRENCH SAMPLES

Date	Sample Number	Line	Station	UTM Eastings	Northing
Aug. 31	W 074501	498+00E	97+25N	462128	5275712
Aug. 31	W 074502	498+00E	97+10N	462132	5275717
Aug. 31	W 074503	498+00E	97+25N	462139	5275712
Sept. 2	W 074505	491+00E	101+50N	461445	5276172
Sept. 2	W 074506	491+00E	101+50N	461438	5276164
Sept. 2	W 074507	491+00E	101+50N	461448	5276154
Sept. 3	W 074508	500+50E	97+50N	462353	5275698
Sept. 3	W 074509	500+50E	97+50N	462365	5275696
Sept. 3	W 074510	500+90E	97+50N	462382	5275697
Sept. 3	W 074511	500+85E	97+50N	462396	5275637
Sept. 4	W 074512	490+00E	102+50N	461337	5276255
Sept. 4	W 074513	490+00E	97+25N	462211	5275713
Sept. 4	W 074514	490+00E	97+25N	462215	5275705

Brunswicktrenchingcosts

BRUNSWICK TRENCHING COSTS 2017

Assays

ALS Cert No. TM17181611	\$442.29
TM17188308	\$651.50
TM17184224	\$560.70

Excavators:

BearValley Contracting	\$7090.75
LaCroix	\$1864.50

Field workers Glen Coyne, Dominik Coyne, time, truck, saws, equipment August 11-Sept. 6

Exsics	\$21018.00
Accom. Meals, gas for Field workers	\$ 3114.33
R. Middleton meals, accom., gas, truck rentals	\$ 3745.22 + \$ 2993.18
Pump and hose rental Valley Fire	\$ 1779.75
R. Middleton July 22–Sept. 16 29.75 days @ 625/day	\$18593.75

Prospecting Costs

ALS Cert No. TM17192908	\$69.92
TM17189134	\$154.48
TM17124104	\$598.53
TM17169935	\$651.58

M. Tremblay time June+September 9 days @500/day \$4500.00

Subtotal Prospecting \$5974.51

Grand TOTAL \$67828.48

REFERENCES

- Berger, B. (2012): Precambrian Geology South of Gogama Area . Scale 1:50,000 Map P. 3762
- Coles, Pam, Middleton, R.S. (2016) Rainy Mountain Royalty Corp., OreVision Survey (IP), Tremblay Property, Brunswick Township, Ontario, Canada ,Logistics Report Abitibi Geophysics 16N075 December, 2016
- Grant, J.C. (2017) Geophysical Report for Rainy Mountain Royalty Corp. on the Mike Tremblay Option (Brunswick Project), Brunswick Township, Porcupine Mining Division, September, 2017.
- Johnson, Matthew (2010) Report of Induced Polarization Surveys On the Brunswick Property. Brunswick Twp., Porcupine Mining Division, for Benton Resources. Oct. 7, 2010
- Johnson, Matthew (2010b) Report of Magnetic Geophysical Surveys and Line Cutting on the Brunswick Property, Brunswick Township, Ontario, Porcupine Mining Division. May 3, 2010 (Survey Nov. 2009, lines cut Oct. 2009)
- Kleinbreck, Joerg (2010) Soil Geochemistry Report, Brunswick Property, Benton Resources Corp. Oct. 25, 2010.
- Middleton, R. S. (2017) Report on Trenching and Prospecting 2017, M. Tremblay Option, Rainy Mountain Royalty Corp., Brunswick Twp. Porcupine Mining Division, Ontario. December 1, 2017.
- Middleton R.S., Tremblay, M. (2017) Drill Report, M. Tremblay Option, Rainy Mountain Royalty Corp., Brunswick Twp., Porcupine Mining Division, Ontario
- Ministry of Northern Development and Mines (1991): Bedrock Geology of Ontario, East –Central Sheet Map 2543 Scale 1:1,000,000
- Ontario Division of Mines (1973): Timmins-Kirkland Lake, Geological Compilation Series, 1 inch = 4 miles Map 2205
- Ontario Geological Survey (2002) Geological Compilation of the Swayze Area, Abitibi Greenstone Belt, Scale 1:100,000 Map 3511
- Ontario Geological Survey (2005) Airborne Magnetic Survey, Shaded Magnetic Relief, Abitibi Greenstone Belt Compilation, Scale 1:250,000 Map 81953
- Ontario Geological Survey (2012) Data Disc of photos and notes by Ben Berger MRD 292
- Siragusa G.M. (1983) Precambrian Geology, Brunswick Twp., Ontario Geological Survey, Preliminary Map 2606 Scale 1:15, 840
- Tremblay, M., Middleton, R.S. (2016) Geological and Prospecting Survey of the Brunswick Property, M. Tremblay Option, Rainy Mountain Royalty Corp., Porcupine Mining Division, Dec.30, 2016

## Statement of Qualifications

I, Robert S. Middleton, am a graduate of the Provincial Institute of Mining (Haileybury, Ontario) (1965) – Mining Diploma; Michigan Technological University 1968, B.S. Applied Geophysics, 1969 M.S. Applied Geophysics.

Attended University of Toronto 1970 – Ph.D Geological program.

Employed during the summers of:

1964 – Keevil Mining Group – Geophysical Engineering and Surveys Ltd. Gaspé geochemistry.

1965 – Selco Exploration – NW Ontario (Magnetics) and NE Quebec (EM, Mag, Gravity, Mining Regs.)

1966 – Selco Exploration – NE Ontario (Geological Mapping)

1967 – Calumet & Hecla Mining – Keweenaw (IP (drill hole) surface and underground) and Michigan (Mag and drill hole IP)

Employed Ontario Dept. of Mines, 1968-1971, Mag, Geology, Gravity, Mining Regs.

Employed Barringer Research Ltd., 1971-1974, Airborne Geophysics, Consulting, Ground Geophysics

Employed Rosario Resources Corp., 1974-1980, Timmins, Honduras, Nicaragua, Dominican Republic

Employed Newmont Exploration of Canada, 1982-1983, Quebec, Ontario, Newfoundland, NWT.

Manager of Exploration, RC and diamond drill projects, geophysics.

Consulting Based from Timmins, 1983-1990, various Au/ base metal projects in Manitoba, Quebec, Ontario, USA, Scotland. RC drilling and numerous diamond drill programs.

Management Various junior mining companies, 1990-present, VMS, Cu, Zn, Au, diamonds, Cu-Ni-PGE, Cross Lake discovery, Zn/Ag/Cu near Timmins

Member of Ontario Association of Professional Engineers, Canadian Institute of Mining and Metallurgy, and former Member of the Association of Exploration Geochemists, Society of Economic Geologists, Society of Geology Applied to Ore Deposits, and Geological Association of Canada.

Special Assignments:

Uganda – Evaluation of Kilembi Proterozoic Cu, Ni, Co (1992)

Siberia – Diamonds and Kimberlites (1993)

NWT – Valuations of Lac de Gras area projects (1995)

Kyrgystan – Gold deposit evaluation (1996)

South Korea- Moland Molybdenum Mine study (2009)

Exploration Manager East West Resource Corporation, 1992-2010.

KWG technical advisor on chromite development, rail line, aboriginal relations 2008-2010.

Giyani Gold, South Africa 2011-2013. Drill programs, geophysics and mapping Archean greenstones

Harte Gold, White River 2014-2015 mapping, geophysics, drilling resources

Rainy Mountain Royalty QP and VP 2016-present NE and NW Ontario projects

Robert Middleton . Date: December 1, 2017 .

R.S. Middleton, P.Eng.

#

## APPENDIX





ALS Canada Ltd.  
 2103 Dollarton Hwy  
 North Vancouver BC V7H 0A7  
 Phone: +1 (604) 984 0221 Fax: +1 (604) 984 0218  
 www.alsglobal.com/geochemistry

To: RAINY MOUNTAIN ROYALTY CORP  
 2489 BELLEVUE AVE  
 WEST VANCOUVER BC V7V 1E1

Page: 1  
 Total # Pages: 2 (A)  
 Plus Appendix Pages  
 Finalized Date: 12-SEP-2017  
 Account: NMZ

**CERTIFICATE TM17192908**

Project: BRUNSWICK

This report is for 2 Rock samples submitted to our lab in Timmins, ON, Canada on 7-SEP-2017.

The following have access to data associated with this certificate:

DOUG MASON	ROBERT MIDDLETON
------------	------------------

SAMPLE PREPARATION	
ALS CODE	DESCRIPTION
FND-02	Find Sample for Addn Analysis

ANALYTICAL PROCEDURES		
ALS CODE	DESCRIPTION	INSTRUMENT
Au-ICP21	Au 30g FA ICP-AES Finish	ICP-AES

To: RAINY MOUNTAIN ROYALTY CORP  
 ATTN: ROBERT MIDDLETON  
 1158 RUSSELL STREET  
 THUNDER BAY ON P7B 5N2

This is the Final Report and supersedes any preliminary report with this certificate number. Results apply to samples as submitted. All pages of this report have been checked and approved for release.

\*\*\*\*\* See Appendix Page for comments regarding this certificate \*\*\*\*\*

Signature:   
 Colin Ramshaw, Vancouver Laboratory Manager



ALS Canada Ltd.  
2103 Dollarton Hwy  
North Vancouver BC V7H 0A7  
Phone: +1 (604) 984 0221 Fax: +1 (604) 984 0218  
www.alsglobal.com/geochemistry

To: RAINY MOUNTAIN ROYALTY CORP  
2489 BELLEVUE AVE  
WEST VANCOUVER BC V7V 1E1

Page: 2 - A  
Total # Pages: 2 (A)  
Plus Appendix Pages  
Finalized Date: 12-SEP-2017  
Account: NMZ

Project: BRUNSWICK

**CERTIFICATE OF ANALYSIS TM17192908**

Sample Description	Method Analyte Units LOR	Au-ICP21 Au ppm 0.001
V904028 V904029		0.322 0.172



ALS Canada Ltd.  
2103 Dollarton Hwy  
North Vancouver BC V7H 0A7  
Phone: +1 (604) 984 0221 Fax: +1 (604) 984 0218  
www.alsglobal.com/geochemistry

To: RAINY MOUNTAIN ROYALTY CORP  
2489 BELLEVUE AVE  
WEST VANCOUVER BC V7V 1E1

Page: Appendix 1  
Total # Appendix Pages: 1  
Finalized Date: 12-SEP-2017  
Account: NMZ

Project: BRUNSWICK

**CERTIFICATE OF ANALYSIS TM17192908**

**CERTIFICATE COMMENTS**

**LABORATORY ADDRESSES**

Applies to Method:

Processed at ALS Vancouver located at 2103 Dollarton Hwy, North Vancouver, BC, Canada.  
Au-ICP21 FND-02



ALS Canada Ltd.  
 2103 Dollarton Hwy  
 North Vancouver BC V7H 0A7  
 Phone: +1 (604) 984 0221 Fax: +1 (604) 984 0218  
 www.alsglobal.com/geochemistry

To: RAINY MOUNTAIN ROYALTY CORP  
 2489 BELLEVUE AVE  
 WEST VANCOUVER BC V7V 1E1

Page: 1  
 Total # Pages: 2 (A - D)  
 Plus Appendix Pages  
 Finalized Date: 13-SEP-2017  
 Account: NMZ

**CERTIFICATE TM17189134**

Project: BRUNSWICK

This report is for 3 Rock samples submitted to our lab in Timmins, ON, Canada on 5-SEP-2017.

The following have access to data associated with this certificate:

DOUG MASON	ROBERT MIDDLETON
------------	------------------

SAMPLE PREPARATION	
ALS CODE	DESCRIPTION
WEI-21	Received Sample Weight
LOG-22	Sample login - Rcd w/o BarCode
CRU-31	Fine crushing - 70% <2mm
SPL-21	Split sample - riffle splitter
CRU-QC	Crushing QC Test
PUL-QC	Pulverizing QC Test
PUL-31	Pulverize split to 85% <75 um

ANALYTICAL PROCEDURES	
ALS CODE	DESCRIPTION
ME-MS41	Ultra Trace Aqua Regia ICP-MS

To: RAINY MOUNTAIN ROYALTY CORP  
 ATTN: ROBERT MIDDLETON  
 1158 RUSSELL STREET  
 THUNDER BAY ON P7B 5N2

This is the Final Report and supersedes any preliminary report with this certificate number. Results apply to samples as submitted. All pages of this report have been checked and approved for release.

\*\*\*\*\* See Appendix Page for comments regarding this certificate \*\*\*\*\*

Signature:   
 Colin Ramshaw, Vancouver Laboratory Manager



ALS Canada Ltd.  
 2103 Dollarton Hwy  
 North Vancouver BC V7H 0A7  
 Phone: +1 (604) 984 0221 Fax: +1 (604) 984 0218  
 www.alsglobal.com/geochemistry

To: RAINY MOUNTAIN ROYALTY CORP  
 2489 BELLEVUE AVE  
 WEST VANCOUVER BC V7V 1E1

Page: 2 - A  
 Total # Pages: 2 (A - D)  
 Plus Appendix Pages  
 Finalized Date: 13-SEP-2017  
 Account: NMZ

Project: BRUNSWICK

**CERTIFICATE OF ANALYSIS TM17189134**

Sample Description	Method Analyte Units LOR	WEI-21 Recvd Wt. kg	ME-MS41 Ag ppm	ME-MS41 Al %	ME-MS41 As ppm	ME-MS41 Au ppm	ME-MS41 B ppm	ME-MS41 Ba ppm	ME-MS41 Be ppm	ME-MS41 Bi ppm	ME-MS41 Ca %	ME-MS41 Cd ppm	ME-MS41 Ce ppm	ME-MS41 Co ppm	ME-MS41 Cr ppm	ME-MS41 Cs ppm
		0.02	0.01	0.01	0.1	0.02	10	10	0.05	0.01	0.01	0.01	0.02	0.1	1	0.05
V904964		0.72	0.06	0.15	0.4	<0.02	<10	20	0.13	0.19	0.22	0.01	10.75	1.7	20	0.09
V904965		0.54	<0.01	0.01	<0.1	<0.02	<10	<10	<0.05	0.02	0.01	<0.01	0.06	0.1	6	<0.05
V904966		0.93	0.13	1.98	0.8	<0.02	<10	60	0.11	0.05	0.53	0.02	10.35	21.4	134	0.53



ALS Canada Ltd.  
 2103 Dollarton Hwy  
 North Vancouver BC V7H 0A7  
 Phone: +1 (604) 984 0221 Fax: +1 (604) 984 0218  
 www.alsglobal.com/geochemistry

To: RAINY MOUNTAIN ROYALTY CORP  
 2489 BELLEVUE AVE  
 WEST VANCOUVER BC V7V 1E1

Page: 2 - B  
 Total # Pages: 2 (A - D)  
 Plus Appendix Pages  
 Finalized Date: 13-SEP-2017  
 Account: NMZ

Project: BRUNSWICK

**CERTIFICATE OF ANALYSIS TM17189134**

Sample Description	Method Analyte Units LOR	ME-MS41 Cu ppm 0.2	ME-MS41 Fe % 0.01	ME-MS41 Ga ppm 0.05	ME-MS41 Ge ppm 0.05	ME-MS41 Hf ppm 0.02	ME-MS41 Hg ppm 0.01	ME-MS41 In ppm 0.005	ME-MS41 K % 0.01	ME-MS41 La ppm 0.2	ME-MS41 Li ppm 0.1	ME-MS41 Mg % 0.01	ME-MS41 Mn ppm 5	ME-MS41 Mo ppm 0.05	ME-MS41 Na % 0.01	ME-MS41 Nb ppm 0.05
V904964		1.9	0.59	1.00	<0.05	0.34	<0.01	<0.005	0.05	5.0	1.2	0.07	74	0.16	0.04	0.09
V904965		0.9	0.24	0.07	<0.05	<0.02	<0.01	<0.005	<0.01	<0.2	0.1	<0.01	27	0.14	0.01	<0.05
V904966		42.0	3.26	5.96	0.09	0.03	<0.01	0.007	0.14	4.9	19.4	2.27	411	1.80	0.04	0.22



ALS Canada Ltd.  
 2103 Dollarton Hwy  
 North Vancouver BC V7H 0A7  
 Phone: +1 (604) 984 0221 Fax: +1 (604) 984 0218  
 www.alsglobal.com/geochemistry

To: RAINY MOUNTAIN ROYALTY CORP  
 2489 BELLEVUE AVE  
 WEST VANCOUVER BC V7V 1E1

Page: 2 - C  
 Total # Pages: 2 (A - D)  
 Plus Appendix Pages  
 Finalized Date: 13-SEP-2017  
 Account: NMZ

Project: BRUNSWICK

**CERTIFICATE OF ANALYSIS TM17189134**

Sample Description	Method Analyte Units LOR	ME-MS41	ME-MS41	ME-MS41	ME-MS41	ME-MS41	ME-MS41	ME-MS41	ME-MS41	ME-MS41	ME-MS41	ME-MS41	ME-MS41	ME-MS41	ME-MS41	
		Ni ppm	P ppm	Pb ppm	Rb ppm	Re ppm	S %	Sb ppm	Sc ppm	Se ppm	Sn ppm	Sr ppm	Ta ppm	Te ppm	Th ppm	Ti %
		0.2	10	0.2	0.1	0.001	0.01	0.05	0.1	0.2	0.2	0.2	0.01	0.01	0.2	0.005
V904964		3.3	160	0.7	2.1	<0.001	0.09	<0.05	0.3	<0.2	<0.2	11.7	<0.01	0.05	0.7	0.015
V904965		0.6	<10	<0.2	0.1	<0.001	<0.01	<0.05	0.1	<0.2	<0.2	0.6	<0.01	0.01	<0.2	<0.005
V904966		120.5	580	1.3	7.2	0.002	1.20	<0.05	2.0	2.9	0.2	21.0	<0.01	0.33	0.9	0.135



ALS Canada Ltd.  
 2103 Dollarton Hwy  
 North Vancouver BC V7H 0A7  
 Phone: +1 (604) 984 0221 Fax: +1 (604) 984 0218  
 www.alsglobal.com/geochemistry

To: RAINY MOUNTAIN ROYALTY CORP  
 2489 BELLEVUE AVE  
 WEST VANCOUVER BC V7V 1E1

Page: 2 - D  
 Total # Pages: 2 (A - D)  
 Plus Appendix Pages  
 Finalized Date: 13-SEP-2017  
 Account: NMZ

Project: BRUNSWICK

**CERTIFICATE OF ANALYSIS TM17189134**

Sample Description	Method Analyte Units LOR	ME-MS41 Ti ppm 0.02	ME-MS41 U ppm 0.05	ME-MS41 V ppm 1	ME-MS41 W ppm 0.05	ME-MS41 Y ppm 0.05	ME-MS41 Zn ppm 2	ME-MS41 Zr ppm 0.5
V904964		<0.02	0.29	3	0.12	1.06	6	12.6
V904965		<0.02	<0.05	1	<0.05	<0.05	<2	<0.5
V904966		0.04	0.10	35	0.05	2.85	66	1.0





ALS Canada Ltd.  
 2103 Dollarton Hwy  
 North Vancouver BC V7H 0A7  
 Phone: +1 (604) 984 0221 Fax: +1 (604) 984 0218  
 www.alsglobal.com/geochemistry

To: RAINY MOUNTAIN ROYALTY CORP  
 2489 BELLEVUE AVE  
 WEST VANCOUVER BC V7V 1E1

Page: Appendix 1  
 Total # Appendix Pages: 1  
 Finalized Date: 13-SEP-2017  
 Account: NMZ

Project: BRUNSWICK

<b>CERTIFICATE OF ANALYSIS</b>	<b>TM17189134</b>
--------------------------------	-------------------

<b>CERTIFICATE COMMENTS</b>									
	<b>ANALYTICAL COMMENTS</b>								
Applies to Method:	Gold determinations by this method are semi-quantitative due to the small sample weight used (0.5g). ME-MS41								
	<b>LABORATORY ADDRESSES</b>								
Applies to Method:	Processed at ALS Vancouver located at 2103 Dollarton Hwy, North Vancouver, BC, Canada. ME-MS41								
Applies to Method:	Processed at ALS Timmins located at Unit 10 - 2090 Riverside Drive, Timmins, ON, Canada.								
	<table style="width: 100%; border: none;"> <tr> <td style="width: 33%;">CRU-31</td> <td style="width: 33%;">CRU-QC</td> <td style="width: 33%;">LOG-22</td> <td style="width: 15%;"></td> </tr> <tr> <td>PUL-QC</td> <td>SPL-21</td> <td>WEI-21</td> <td>PUL-31</td> </tr> </table>	CRU-31	CRU-QC	LOG-22		PUL-QC	SPL-21	WEI-21	PUL-31
CRU-31	CRU-QC	LOG-22							
PUL-QC	SPL-21	WEI-21	PUL-31						



ALS Canada Ltd.  
 2103 Dollarton Hwy  
 North Vancouver BC V7H 0A7  
 Phone: +1 (604) 984 0221 Fax: +1 (604) 984 0218  
 www.alsglobal.com

To: RAINY MOUNTAIN ROYALTY CORP  
 2489 BELLEVUE AVE  
 WEST VANCOUVER BC V7V 1E1

Page: 1  
 Total # Pages: 2 (A - D)  
 Plus Appendix Pages  
 Finalized Date: 10-JUL-2017  
 Account: NMZ

**CERTIFICATE TM17124104**

Project: Brunswick West Surface

This report is for 17 Rock samples submitted to our lab in Timmins, ON, Canada on 20-JUN-2017.

The following have access to data associated with this certificate:

DOUG MASON	ROBERT MIDDLETON
------------	------------------

SAMPLE PREPARATION	
ALS CODE	DESCRIPTION
WEI-21	Received Sample Weight
LOG-22	Sample login - Rcd w/o BarCode
CRU-31	Fine crushing - 70% <2mm
CRU-QC	Crushing QC Test
PUL-QC	Pulverizing QC Test
SPL-21	Split sample - riffle splitter
PUL-31	Pulverize split to 85% <75 um

ANALYTICAL PROCEDURES		
ALS CODE	DESCRIPTION	INSTRUMENT
Au-ICP21	Au 30g FA ICP-AES Finish	ICP-AES
ME-MS41	Ultra Trace Aqua Regia ICP-MS	
Au-AA23	Au 30g FA-AA finish	AAS

To: RAINY MOUNTAIN ROYALTY CORP  
 ATTN: ROBERT MIDDLETON  
 1158 RUSSELL STREET  
 THUNDER BAY ON P7B 5N2

This is the Final Report and supersedes any preliminary report with this certificate number. Results apply to samples as submitted. All pages of this report have been checked and approved for release.

\*\*\*\*\* See Appendix Page for comments regarding this certificate \*\*\*\*\*

Signature:   
 Colin Ramshaw, Vancouver Laboratory Manager



ALS Canada Ltd.  
 2103 Dollarton Hwy  
 North Vancouver BC V7H 0A7  
 Phone: +1 (604) 984 0221 Fax: +1 (604) 984 0218  
 www.alsglobal.com

To: RAINY MOUNTAIN ROYALTY CORP  
 2489 BELLEVUE AVE  
 WEST VANCOUVER BC V7V 1E1

Page: 2 - A  
 Total # Pages: 2 (A - D)  
 Plus Appendix Pages  
 Finalized Date: 10-JUL-2017  
 Account: NMZ

Project: Brunswick West Surface

**CERTIFICATE OF ANALYSIS TM17124104**

Sample Description	Method Analyte Units LOR	WEI-21	Au-ICP21	Au-AA23	ME-MS41	ME-MS41	ME-MS41	ME-MS41	ME-MS41	ME-MS41	ME-MS41	ME-MS41	ME-MS41	ME-MS41	ME-MS41	ME-MS41
		Recvd Wt. kg	Au ppm	Au ppm	Ag ppm	Al %	As ppm	Au ppm	B ppm	Ba ppm	Be ppm	Bi ppm	Ca %	Cd ppm	Ce ppm	Co ppm
V905451		0.64	6.60	6.77	10.00	0.52	0.4	3.91	<10	10	<0.05	17.55	2.23	0.04	4.28	3.3
V905452		0.62	0.002		0.01	0.61	0.2	<0.02	<10	30	0.05	0.04	0.07	0.01	25.1	1.1
V905453		1.39	0.001		0.03	0.90	0.6	<0.02	<10	40	0.16	0.14	1.97	0.02	45.5	5.7
V905454		0.70	<0.001		0.05	3.20	1.3	<0.02	<10	30	0.15	0.05	0.60	0.02	13.45	26.9
V905455		1.29	<0.001		0.12	2.79	2.4	<0.02	<10	40	0.12	0.11	0.54	0.02	10.35	26.0
V905456		1.38	<0.001		0.02	1.35	0.3	<0.02	<10	10	0.10	0.04	0.50	0.05	8.71	15.0
V905457		0.63	<0.001		0.07	0.64	1.0	<0.02	<10	20	0.09	0.06	0.79	0.03	22.7	24.4
V905458		0.90	<0.001		0.02	1.52	136.5	<0.02	<10	40	0.17	0.01	8.97	0.11	126.5	26.6
V905459		0.37	<0.001		0.07	1.01	0.8	<0.02	<10	130	0.09	0.13	0.31	0.04	14.55	2.1
V905460		0.62	0.001		0.10	2.03	16.9	<0.02	<10	30	0.07	0.18	0.93	0.27	30.9	11.2
V905461		0.68	<0.001		0.04	1.06	18.8	<0.02	<10	20	0.09	0.07	2.31	0.07	18.30	11.8
V905462		0.72	0.013		0.11	1.28	21.3	<0.02	<10	20	0.08	0.43	0.93	0.04	27.8	12.0
V905463		0.95	0.003		0.15	2.06	177.5	<0.02	<10	20	0.05	0.10	6.11	0.09	3.14	45.6
V905464		0.58	0.003		0.01	0.39	2.4	<0.02	<10	60	0.10	0.07	2.93	0.04	57.5	11.2
V905465		0.49	0.013		0.05	0.75	172.0	<0.02	<10	20	0.09	0.11	5.46	0.15	1.90	29.4
V905466		0.40	0.006		0.03	2.35	197.5	<0.02	<10	10	0.06	0.04	4.83	0.06	3.97	32.3
V905467		0.66	0.002		0.02	0.25	261	<0.02	<10	<10	<0.05	0.01	0.87	0.07	0.68	3.2



ALS Canada Ltd.  
 2103 Dollarton Hwy  
 North Vancouver BC V7H 0A7  
 Phone: +1 (604) 984 0221 Fax: +1 (604) 984 0218  
 www.alsglobal.com

To: RAINY MOUNTAIN ROYALTY CORP  
 2489 BELLEVUE AVE  
 WEST VANCOUVER BC V7V 1E1

Page: 2 - B  
 Total # Pages: 2 (A - D)  
 Plus Appendix Pages  
 Finalized Date: 10-JUL-2017  
 Account: NMZ

Project: Brunswick West Surface

**CERTIFICATE OF ANALYSIS TM17124104**

Sample Description	Method Analyte Units LOR	ME-MS41	ME-MS41	ME-MS41	ME-MS41	ME-MS41	ME-MS41	ME-MS41	ME-MS41	ME-MS41	ME-MS41	ME-MS41	ME-MS41	ME-MS41	ME-MS41	
		Cr ppm	Cs ppm	Cu ppm	Fe %	Ga ppm	Ge ppm	Hf ppm	Hg ppm	In ppm	K %	La ppm	Li ppm	Mg %	Mn ppm	Mo ppm
V905451		18	0.07	938	1.15	1.61	<0.05	0.07	0.02	0.016	0.04	2.1	5.9	0.30	344	0.11
V905452		4	0.09	1.8	1.22	2.75	<0.05	0.53	<0.01	0.006	0.12	10.3	3.5	0.25	175	0.40
V905453		12	0.27	10.9	1.69	3.42	0.05	0.35	<0.01	0.009	0.16	23.1	6.4	0.51	324	0.80
V905454		81	0.15	34.0	6.46	6.87	<0.05	0.07	<0.01	0.010	0.05	6.2	27.2	3.20	854	0.71
V905455		64	0.09	35.3	8.98	6.45	0.05	0.09	<0.01	0.008	0.05	4.7	22.3	2.59	764	1.14
V905456		61	0.35	22.2	2.67	5.06	0.08	0.06	<0.01	0.006	0.03	4.0	11.1	1.43	424	1.65
V905457		64	0.23	26.6	2.73	3.52	0.06	0.13	<0.01	0.012	0.02	10.5	4.0	0.69	299	0.20
V905458		48	0.18	8.1	7.95	4.72	0.14	0.08	<0.01	0.033	0.06	55.5	13.9	2.97	2120	0.36
V905459		49	0.79	28.5	3.67	2.83	<0.05	0.10	<0.01	0.014	0.31	7.1	4.6	0.76	229	0.67
V905460		9	0.25	50.2	5.46	6.11	<0.05	0.51	0.01	0.028	0.05	14.8	10.4	0.79	801	1.14
V905461		6	0.20	51.9	3.70	3.63	<0.05	0.42	<0.01	0.013	0.06	8.6	5.0	0.81	577	0.12
V905462		4	0.16	40.3	3.90	4.08	<0.05	0.57	<0.01	0.013	0.04	13.4	6.5	0.49	293	0.79
V905463		104	0.26	113.0	8.32	5.09	<0.05	0.03	<0.01	0.029	0.04	1.3	11.5	2.48	1880	0.16
V905464		8	0.28	108.0	2.29	1.33	0.06	0.38	<0.01	0.006	0.09	25.3	1.6	1.00	407	0.11
V905465		30	0.23	73.9	5.45	1.89	<0.05	0.02	0.01	0.026	0.06	0.7	4.1	1.78	1760	0.10
V905466		390	0.09	72.5	5.35	6.26	0.09	<0.02	<0.01	0.027	0.01	1.4	16.1	3.76	970	0.07
V905467		38	0.08	19.4	1.28	0.66	<0.05	<0.02	0.01	0.013	0.01	0.3	1.4	0.35	474	0.10



ALS Canada Ltd.  
 2103 Dollarton Hwy  
 North Vancouver BC V7H 0A7  
 Phone: +1 (604) 984 0221 Fax: +1 (604) 984 0218  
 www.alsglobal.com

To: RAINY MOUNTAIN ROYALTY CORP  
 2489 BELLEVUE AVE  
 WEST VANCOUVER BC V7V 1E1

Page: 2 - C  
 Total # Pages: 2 (A - D)  
 Plus Appendix Pages  
 Finalized Date: 10-JUL-2017  
 Account: NMZ

Project: Brunswick West Surface

**CERTIFICATE OF ANALYSIS TM17124104**

Sample Description	Method Analyte Units LOR	ME-MS41	ME-MS41	ME-MS41	ME-MS41	ME-MS41	ME-MS41	ME-MS41	ME-MS41	ME-MS41	ME-MS41	ME-MS41	ME-MS41	ME-MS41	ME-MS41	
		Na %	Nb ppm	Ni ppm	P ppm	Pb ppm	Rb ppm	Re ppm	S %	Sb ppm	Sc ppm	Se ppm	Sn ppm	Sr ppm	Ta ppm	Te ppm
V905451		0.01	<0.05	9.7	70	10.0	1.8	<0.001	0.08	<0.05	0.8	1.1	<0.2	18.9	<0.01	15.20
V905452		0.03	0.43	0.5	90	0.5	3.5	<0.001	0.03	<0.05	0.6	0.3	<0.2	2.5	0.01	0.03
V905453		0.03	0.31	14.7	450	0.9	6.5	<0.001	0.05	0.06	1.3	0.5	0.5	16.0	<0.01	0.03
V905454		0.01	0.15	120.5	620	1.5	1.5	<0.001	1.86	<0.05	3.3	0.6	0.3	18.1	<0.01	0.03
V905455		0.01	0.38	83.5	630	2.3	1.4	0.001	4.57	<0.05	2.6	1.0	0.2	19.2	<0.01	0.08
V905456		0.03	0.29	72.9	470	0.6	1.5	0.001	0.26	<0.05	1.6	0.2	0.3	26.5	<0.01	0.01
V905457		0.05	0.74	60.8	520	1.4	1.4	0.001	1.43	<0.05	1.7	0.8	0.4	13.4	<0.01	0.03
V905458		0.01	<0.05	87.0	2620	2.5	2.9	0.001	<0.01	0.63	10.1	1.1	<0.2	337	<0.01	0.01
V905459		0.01	0.88	8.3	910	16.3	14.9	<0.001	0.23	<0.05	2.2	0.3	0.3	27.0	<0.01	0.44
V905460		0.04	<0.05	19.2	400	5.0	2.1	<0.001	0.45	1.78	2.6	0.3	<0.2	13.9	<0.01	0.04
V905461		0.05	<0.05	12.6	550	1.7	1.4	<0.001	0.44	0.32	1.8	0.3	<0.2	28.3	<0.01	0.02
V905462		0.04	<0.05	13.9	200	1.8	1.2	<0.001	0.76	0.43	1.3	0.5	<0.2	11.1	<0.01	0.08
V905463		0.04	<0.05	145.5	210	1.9	1.2	0.001	0.38	2.04	13.6	0.7	<0.2	52.3	<0.01	0.04
V905464		0.03	<0.05	30.5	1110	1.7	2.5	<0.001	0.02	0.19	1.2	0.4	<0.2	133.5	<0.01	0.01
V905465		0.03	<0.05	64.2	270	3.4	1.6	0.001	0.81	2.22	6.6	0.6	<0.2	136.0	<0.01	0.03
V905466		0.01	<0.05	151.5	230	0.9	0.5	<0.001	0.01	0.80	18.2	0.3	<0.2	53.4	<0.01	0.01
V905467		0.01	<0.05	8.0	30	0.3	0.5	<0.001	0.08	0.79	1.6	0.2	<0.2	7.3	<0.01	0.06



ALS Canada Ltd.  
 2103 Dollarton Hwy  
 North Vancouver BC V7H 0A7  
 Phone: +1 (604) 984 0221 Fax: +1 (604) 984 0218  
 www.alsglobal.com

To: RAINY MOUNTAIN ROYALTY CORP  
 2489 BELLEVUE AVE  
 WEST VANCOUVER BC V7V 1E1

Page: 2 - D  
 Total # Pages: 2 (A - D)  
 Plus Appendix Pages  
 Finalized Date: 10-JUL-2017  
 Account: NMZ

Project: Brunswick West Surface

**CERTIFICATE OF ANALYSIS TM17124104**

Sample Description	Method Analyte Units LOR	ME-MS41	ME-MS41	ME-MS41	ME-MS41	ME-MS41	ME-MS41	ME-MS41	ME-MS41	
		Th ppm	Ti %	Ti ppm	U ppm	V ppm	W ppm	Y ppm	Zn ppm	Zr ppm
		0.2	0.005	0.02	0.05	1	0.05	0.05	2	0.5
V905451		0.3	<0.005	<0.02	<0.05	7	<0.05	2.36	19	3.0
V905452		3.8	0.010	0.02	0.37	1	<0.05	10.10	30	19.0
V905453		3.0	0.076	0.03	0.38	8	0.06	12.45	29	13.1
V905454		1.6	0.137	<0.02	0.16	50	0.07	5.30	110	2.2
V905455		1.2	0.146	<0.02	0.11	39	0.06	3.84	99	2.7
V905456		0.8	0.184	<0.02	0.08	37	0.06	2.82	65	1.8
V905457		1.5	0.189	<0.02	0.21	40	0.07	7.64	31	4.2
V905458		3.9	<0.005	0.02	0.39	50	<0.05	14.55	89	6.0
V905459		1.5	0.236	0.04	0.18	17	<0.05	4.00	36	3.4
V905460		3.4	<0.005	<0.02	0.35	17	<0.05	2.54	167	22.7
V905461		1.9	<0.005	<0.02	0.24	11	<0.05	2.36	66	17.6
V905462		4.1	<0.005	<0.02	0.48	7	<0.05	3.31	71	19.6
V905463		<0.2	<0.005	<0.02	<0.05	69	<0.05	1.21	105	1.4
V905464		1.9	<0.005	<0.02	0.29	5	<0.05	5.03	59	19.9
V905465		<0.2	<0.005	<0.02	<0.05	26	<0.05	1.53	81	0.9
V905466		<0.2	<0.005	<0.02	<0.05	109	<0.05	0.88	60	0.5
V905467		<0.2	<0.005	<0.02	<0.05	9	<0.05	0.34	29	<0.5



ALS Canada Ltd.  
 2103 Dollarton Hwy  
 North Vancouver BC V7H 0A7  
 Phone: +1 (604) 984 0221 Fax: +1 (604) 984 0218  
 www.alsglobal.com

To: RAINY MOUNTAIN ROYALTY CORP  
 2489 BELLEVUE AVE  
 WEST VANCOUVER BC V7V 1E1

Page: Appendix 1  
 Total # Appendix Pages: 1  
 Finalized Date: 10-JUL-2017  
 Account: NMZ

Project: Brunswick West Surface

**CERTIFICATE OF ANALYSIS TM17124104**

	<b>CERTIFICATE COMMENTS</b>								
	<b>ANALYTICAL COMMENTS</b>								
Applies to Method:	Gold determinations by this method are semi-quantitative due to the small sample weight used (0.5g). ME-MS41								
	<b>LABORATORY ADDRESSES</b>								
Applies to Method:	Processed at ALS Vancouver located at 2103 Dollarton Hwy, North Vancouver, BC, Canada. <table style="width: 100%; border: none;"> <tr> <td style="width: 33%;">Au-AA23</td> <td style="width: 33%;">Au-ICP21</td> <td style="width: 33%;">ME-MS41</td> </tr> </table>	Au-AA23	Au-ICP21	ME-MS41					
Au-AA23	Au-ICP21	ME-MS41							
Applies to Method:	Processed at ALS Timmins located at Unit 10 - 2090 Riverside Drive, Timmins, ON, Canada. <table style="width: 100%; border: none;"> <tr> <td style="width: 33%;">CRU-31</td> <td style="width: 33%;">CRU-QC</td> <td style="width: 33%;">LOG-22</td> <td style="width: 33%;"></td> </tr> <tr> <td>PUL-QC</td> <td>SPL-21</td> <td>WEI-21</td> <td style="text-align: right;">PUL-31</td> </tr> </table>	CRU-31	CRU-QC	LOG-22		PUL-QC	SPL-21	WEI-21	PUL-31
CRU-31	CRU-QC	LOG-22							
PUL-QC	SPL-21	WEI-21	PUL-31						



ALS Canada Ltd.  
 2103 Dollarton Hwy  
 North Vancouver BC V7H 0A7  
 Phone: +1 (604) 984 0221 Fax: +1 (604) 984 0218  
 www.alsglobal.com/geochemistry

To: RAINY MOUNTAIN ROYALTY CORP  
 2489 BELLEVUE AVE  
 WEST VANCOUVER BC V7V 1E1

Page: 1  
 Total # Pages: 2 (A - D)  
 Plus Appendix Pages  
 Finalized Date: 23-AUG-2017  
 Account: NMZ

**CERTIFICATE TM17169935**

Project: BRUNSWICK

This report is for 13 Rock samples submitted to our lab in Timmins, ON, Canada on 14-AUG-2017.

The following have access to data associated with this certificate:

DOUG MASON	ROBERT MIDDLETON
------------	------------------

SAMPLE PREPARATION	
ALS CODE	DESCRIPTION
WEI-21	Received Sample Weight
LOG-22	Sample login - Rcd w/o BarCode
CRU-31	Fine crushing - 70% <2mm
CRU-QC	Crushing QC Test
PUL-QC	Pulverizing QC Test
SPL-21	Split sample - riffle splitter
PUL-31	Pulverize split to 85% <75 um

ANALYTICAL PROCEDURES		
ALS CODE	DESCRIPTION	INSTRUMENT
Au-ICP21	Au 30g FA ICP-AES Finish	ICP-AES
ME-MS41	Ultra Trace Aqua Regia ICP-MS	
Au-AA23	Au 30g FA-AA finish	AAS

To: RAINY MOUNTAIN ROYALTY CORP  
 ATTN: ROBERT MIDDLETON  
 1158 RUSSELL STREET  
 THUNDER BAY ON P7B 5N2

This is the Final Report and supersedes any preliminary report with this certificate number. Results apply to samples as submitted. All pages of this report have been checked and approved for release.

\*\*\*\*\* See Appendix Page for comments regarding this certificate \*\*\*\*\*

Signature:   
 Colin Ramshaw, Vancouver Laboratory Manager





ALS Canada Ltd.  
 2103 Dollarton Hwy  
 North Vancouver BC V7H 0A7  
 Phone: +1 (604) 984 0221 Fax: +1 (604) 984 0218  
 www.alsglobal.com/geochemistry

To: RAINY MOUNTAIN ROYALTY CORP  
 2489 BELLEVUE AVE  
 WEST VANCOUVER BC V7V 1E1

Page: 2 - A  
 Total # Pages: 2 (A - D)  
 Plus Appendix Pages  
 Finalized Date: 23-AUG-2017  
 Account: NMZ

Project: BRUNSWICK

**CERTIFICATE OF ANALYSIS TM17169935**

Sample Description	Method Analyte Units LOR	WEI-21	Au-ICP21	Au-AA23	ME-MS41	ME-MS41	ME-MS41	ME-MS41	ME-MS41	ME-MS41	ME-MS41	ME-MS41	ME-MS41	ME-MS41	ME-MS41	
		Recvd Wt. kg	Au ppm	Au ppm	Ag ppm	Al %	As ppm	Au ppm	B ppm	Ba ppm	Be ppm	Bi ppm	Ca %	Cd ppm	Ce ppm	Co ppm
J904951		0.02	0.001	0.005	0.01	0.01	0.1	0.02	10	10	0.05	0.01	0.01	0.01	0.02	0.1
J904952		0.35			0.11	2.14	5.7	<0.02	<10	20	0.27	0.04	0.60	0.10	5.80	23.8
J904953		0.29			0.40	2.68	6.8	<0.02	<10	10	0.11	0.86	0.39	0.05	10.60	106.0
J904954		0.26			0.01	0.64	0.3	<0.02	<10	40	0.15	0.05	0.29	0.01	26.1	6.0
J904955		0.27			0.04	1.75	0.6	<0.02	<10	60	0.13	0.06	0.40	0.02	19.95	17.4
J904956		0.36			0.02	3.80	0.3	<0.02	<10	300	0.50	0.02	4.17	0.06	6.03	40.8
J904957		0.65			0.02	1.12	1.0	<0.02	<10	10	0.14	0.02	0.98	0.01	12.50	14.2
J904958		0.47			0.02	2.04	0.5	<0.02	<10	170	0.40	0.05	2.33	0.03	8.53	11.6
J904959		0.34			0.01	1.36	0.3	<0.02	<10	140	0.26	0.02	1.24	0.01	7.39	11.3
J904960		0.26			0.06	1.02	0.5	<0.02	<10	10	0.12	0.04	0.87	0.02	8.01	23.7
J904961		0.36			0.04	1.01	0.2	0.07	<10	30	0.10	0.48	0.59	0.02	33.7	6.6
J904962		0.33	2.56		1.27	0.16	0.2	2.35	<10	10	<0.05	8.61	0.81	0.02	3.91	1.3
J904963		0.32			0.03	1.49	0.2	0.10	<10	10	0.05	0.08	0.89	0.01	27.5	9.8
J904963		0.47	3.96	4.05	1.32	0.07	0.2	4.03	<10	10	<0.05	10.45	0.52	0.02	1.28	1.8



ALS Canada Ltd.  
 2103 Dollarton Hwy  
 North Vancouver BC V7H 0A7  
 Phone: +1 (604) 984 0221 Fax: +1 (604) 984 0218  
 www.alsglobal.com/geochemistry

To: RAINY MOUNTAIN ROYALTY CORP  
 2489 BELLEVUE AVE  
 WEST VANCOUVER BC V7V 1E1

Page: 2 - B  
 Total # Pages: 2 (A - D)  
 Plus Appendix Pages  
 Finalized Date: 23-AUG-2017  
 Account: NMZ

Project: BRUNSWICK

**CERTIFICATE OF ANALYSIS TM17169935**

Sample Description	Method Analyte Units LOR	ME-MS41	ME-MS41	ME-MS41	ME-MS41	ME-MS41	ME-MS41	ME-MS41	ME-MS41	ME-MS41	ME-MS41	ME-MS41	ME-MS41	ME-MS41	ME-MS41	
		Cr ppm	Cs ppm	Cu ppm	Fe %	Ga ppm	Ge ppm	Hf ppm	Hg ppm	In ppm	K %	La ppm	Li ppm	Mg %	Mn ppm	Mo ppm
J904951	1	13	0.05	33.4	4.46	5.60	0.05	0.07	<0.01	0.007	0.08	2.7	25.4	1.68	497	0.59
J904952	15	0.20	544	11.45	8.86	0.08	0.18	<0.01	0.023	0.03	4.4	17.7	1.43	491	0.83	
J904953	5	0.35	8.3	1.43	4.19	<0.05	0.66	<0.01	0.007	0.10	11.0	3.8	0.46	141	0.47	
J904954	3	1.30	60.7	3.34	6.45	<0.05	0.11	<0.01	0.007	0.39	5.7	11.3	1.26	283	3.49	
J904955	552	13.70	21.1	6.39	12.70	0.25	0.03	<0.01	0.031	2.35	2.1	22.2	4.61	956	1.69	
J904956	6	0.07	16.5	3.10	6.50	0.07	0.05	<0.01	0.010	0.03	5.3	4.6	0.86	313	0.11	
J904957	119	4.51	9.7	3.64	8.61	0.15	0.05	<0.01	0.011	1.07	3.6	12.2	2.23	670	43.7	
J904958	95	3.42	18.9	2.51	5.82	0.08	0.06	<0.01	0.010	0.81	2.9	8.9	1.47	425	38.7	
J904959	4	0.24	31.9	4.30	4.54	0.07	0.15	<0.01	0.008	0.05	3.3	5.1	0.90	272	0.17	
J904960	7	0.19	109.0	1.74	3.61	<0.05	0.23	<0.01	0.007	0.13	15.5	11.9	0.52	195	0.42	
J904961	9	0.07	539	0.51	0.61	<0.05	0.05	0.01	0.007	0.04	1.9	1.3	0.06	132	0.19	
J904962	10	0.10	49.5	2.88	6.53	<0.05	0.22	<0.01	0.008	0.07	13.2	17.5	0.77	262	0.57	
J904963	10	<0.05	117.5	0.44	0.28	<0.05	0.03	0.01	<0.005	0.03	0.6	0.5	0.02	90	0.14	



ALS Canada Ltd.  
 2103 Dollarton Hwy  
 North Vancouver BC V7H 0A7  
 Phone: +1 (604) 984 0221 Fax: +1 (604) 984 0218  
 www.alsglobal.com/geochemistry

To: RAINY MOUNTAIN ROYALTY CORP  
 2489 BELLEVUE AVE  
 WEST VANCOUVER BC V7V 1E1

Page: 2 - C  
 Total # Pages: 2 (A - D)  
 Plus Appendix Pages  
 Finalized Date: 23-AUG-2017  
 Account: NMZ

Project: BRUNSWICK

**CERTIFICATE OF ANALYSIS TM17169935**

Sample Description	Method Analyte Units LOR	ME-MS41	ME-MS41	ME-MS41	ME-MS41	ME-MS41	ME-MS41	ME-MS41	ME-MS41	ME-MS41	ME-MS41	ME-MS41	ME-MS41	ME-MS41	ME-MS41	
		Na %	Nb ppm	Ni ppm	P ppm	Pb ppm	Rb ppm	Re ppm	S %	Sb ppm	Sc ppm	Se ppm	Sn ppm	Sr ppm	Ta ppm	Te ppm
J904951		0.01	0.14	35.8	610	1.8	2.8	0.001	0.62	0.10	2.0	0.3	0.2	20.0	<0.01	0.02
J904952		0.01	0.25	47.1	630	6.8	1.3	0.001	6.92	0.20	5.1	1.0	0.5	8.7	0.01	0.11
J904953		0.02	0.38	9.1	330	1.3	3.8	<0.001	0.09	<0.05	1.6	<0.2	0.3	21.1	<0.01	0.01
J904954		0.01	0.38	15.2	750	0.6	17.8	0.001	0.18	<0.05	2.2	0.4	0.2	16.3	<0.01	0.02
J904955		<0.01	<0.05	306	350	1.5	102.0	0.005	0.05	<0.05	13.1	0.3	0.4	108.0	<0.01	0.01
J904956		0.02	0.49	9.4	900	0.9	0.9	<0.001	0.49	<0.05	3.0	0.4	0.3	35.1	<0.01	0.01
J904957		<0.01	0.05	79.2	660	1.0	44.8	0.148	0.17	<0.05	6.1	0.2	0.3	41.5	<0.01	0.02
J904958		<0.01	0.05	58.7	430	0.5	34.4	0.122	0.22	<0.05	4.6	0.3	0.2	21.4	<0.01	<0.01
J904959		0.03	0.71	11.0	1030	0.8	2.5	0.001	2.54	<0.05	2.8	1.0	0.3	21.0	<0.01	0.04
J904960		<0.01	<0.05	9.7	450	0.3	4.6	<0.001	0.05	<0.05	1.0	0.2	<0.2	7.9	<0.01	0.24
J904961		<0.01	<0.05	1.6	40	0.8	1.7	<0.001	0.07	<0.05	0.4	0.7	<0.2	7.2	<0.01	5.82
J904962		0.01	<0.05	13.5	540	0.3	2.8	<0.001	0.09	<0.05	1.8	0.2	<0.2	8.6	<0.01	0.05
J904963		<0.01	<0.05	1.2	20	0.3	1.1	<0.001	0.06	<0.05	0.3	0.4	<0.2	5.0	<0.01	7.29



ALS Canada Ltd.  
 2103 Dollarton Hwy  
 North Vancouver BC V7H 0A7  
 Phone: +1 (604) 984 0221 Fax: +1 (604) 984 0218  
 www.alsglobal.com/geochemistry

To: RAINY MOUNTAIN ROYALTY CORP  
 2489 BELLEVUE AVE  
 WEST VANCOUVER BC V7V 1E1

Page: 2 - D  
 Total # Pages: 2 (A - D)  
 Plus Appendix Pages  
 Finalized Date: 23-AUG-2017  
 Account: NMZ

Project: BRUNSWICK

**CERTIFICATE OF ANALYSIS TM17169935**

Sample Description	Method Analyte Units LOR	ME-MS41	ME-MS41	ME-MS41	ME-MS41	ME-MS41	ME-MS41	ME-MS41	ME-MS41	
		Th ppm	Ti %	Tl ppm	U ppm	V ppm	W ppm	Y ppm	Zn ppm	Zr ppm
		0.2	0.005	0.02	0.05	1	0.05	0.05	2	0.5
J904951		0.4	0.257	0.02	0.06	70	0.07	2.22	78	1.8
J904952		0.8	0.168	0.05	0.12	87	0.06	3.88	75	4.7
J904953		1.8	0.089	0.02	0.52	22	0.05	4.07	37	21.1
J904954		1.4	0.185	0.09	0.13	41	<0.05	3.79	84	4.2
J904955		<0.2	0.288	0.56	<0.05	106	<0.05	6.15	140	1.0
J904956		1.0	0.218	<0.02	0.17	46	0.06	4.23	59	1.4
J904957		0.6	0.170	0.23	0.08	81	<0.05	3.29	77	1.6
J904958		0.6	0.135	0.18	0.08	51	<0.05	2.71	53	1.7
J904959		0.6	0.176	<0.02	0.12	38	0.05	4.84	51	4.6
J904960		3.3	<0.005	0.02	0.23	8	<0.05	4.40	33	9.3
J904961		0.2	<0.005	<0.02	<0.05	2	<0.05	1.59	8	2.0
J904962		2.0	<0.005	<0.02	0.19	13	<0.05	3.90	55	9.0
J904963		<0.2	<0.005	<0.02	<0.05	1	<0.05	1.39	5	1.0



ALS Canada Ltd.  
 2103 Dollarton Hwy  
 North Vancouver BC V7H 0A7  
 Phone: +1 (604) 984 0221 Fax: +1 (604) 984 0218  
 www.alsglobal.com/geochemistry

To: RAINY MOUNTAIN ROYALTY CORP  
 2489 BELLEVUE AVE  
 WEST VANCOUVER BC V7V 1E1

Page: Appendix 1  
 Total # Appendix Pages: 1  
 Finalized Date: 23-AUG-2017  
 Account: NMZ

Project: BRUNSWICK

<b>CERTIFICATE OF ANALYSIS    TM17169935</b>
--

	<b>CERTIFICATE COMMENTS</b>								
	<b>ANALYTICAL COMMENTS</b>								
Applies to Method:	Gold determinations by this method are semi-quantitative due to the small sample weight used (0.5g). ME-MS41								
	<b>LABORATORY ADDRESSES</b>								
Applies to Method:	Processed at ALS Vancouver located at 2103 Dollarton Hwy, North Vancouver, BC, Canada. <table style="width: 100%; border: none;"> <tr> <td style="width: 33%;">Au-AA23</td> <td style="width: 33%;">Au-ICP21</td> <td style="width: 33%;">ME-MS41</td> </tr> </table>	Au-AA23	Au-ICP21	ME-MS41					
Au-AA23	Au-ICP21	ME-MS41							
Applies to Method:	Processed at ALS Timmins located at Unit 10 - 2090 Riverside Drive, Timmins, ON, Canada. <table style="width: 100%; border: none;"> <tr> <td style="width: 33%;">CRU-31</td> <td style="width: 33%;">CRU-QC</td> <td style="width: 33%;">LOG-22</td> <td style="width: 33%;"></td> </tr> <tr> <td>PUL-QC</td> <td>SPL-21</td> <td>WEI-21</td> <td style="text-align: right;">PUL-31</td> </tr> </table>	CRU-31	CRU-QC	LOG-22		PUL-QC	SPL-21	WEI-21	PUL-31
CRU-31	CRU-QC	LOG-22							
PUL-QC	SPL-21	WEI-21	PUL-31						



ALS Canada Ltd.  
 2103 Dollarton Hwy  
 North Vancouver BC V7H 0A7  
 Phone: +1 (604) 984 0221 Fax: +1 (604) 984 0218  
 www.alsglobal.com/geochemistry

To: RAINY MOUNTAIN ROYALTY CORP  
 2489 BELLEVUE AVE  
 WEST VANCOUVER BC V7V 1E1

Page: 1  
 Total # Pages: 2 (A - E)  
 Plus Appendix Pages  
 Finalized Date: 8-SEP-2017  
 Account: NMZ

**CERTIFICATE TM17181611**

Project: BRUNSWICK

This report is for 8 Rock samples submitted to our lab in Timmins, ON, Canada on 28-AUG-2017.

The following have access to data associated with this certificate:

DOUG MASON	ROBERT MIDDLETON
------------	------------------

SAMPLE PREPARATION	
ALS CODE	DESCRIPTION
WEI-21	Received Sample Weight
LOG-22	Sample login - Rcd w/o BarCode
CRU-31	Fine crushing - 70% <2mm
SPL-21	Split sample - riffle splitter
CRU-QC	Crushing QC Test
PUL-QC	Pulverizing QC Test
PUL-31	Pulverize split to 85% <75 um

ANALYTICAL PROCEDURES		
ALS CODE	DESCRIPTION	INSTRUMENT
Au-ICP21	Au 30g FA ICP-AES Finish	ICP-AES
ME-MS41	Ultra Trace Aqua Regia ICP-MS	
ME-XRF06	Whole Rock Package - XRF	XRF
OA-GRA06	LOI for ME-XRF06	WST-SIM

To: RAINY MOUNTAIN ROYALTY CORP  
 ATTN: ROBERT MIDDLETON  
 1158 RUSSELL STREET  
 THUNDER BAY ON P7B 5N2

This is the Final Report and supersedes any preliminary report with this certificate number. Results apply to samples as submitted. All pages of this report have been checked and approved for release.

\*\*\*\*\* See Appendix Page for comments regarding this certificate \*\*\*\*\*

Signature:   
 Colin Ramshaw, Vancouver Laboratory Manager



ALS Canada Ltd.  
 2103 Dollarton Hwy  
 North Vancouver BC V7H 0A7  
 Phone: +1 (604) 984 0221 Fax: +1 (604) 984 0218  
 www.alsglobal.com/geochemistry

To: RAINY MOUNTAIN ROYALTY CORP  
 2489 BELLEVUE AVE  
 WEST VANCOUVER BC V7V 1E1

Page: 2 - A  
 Total # Pages: 2 (A - E)  
 Plus Appendix Pages  
 Finalized Date: 8-SEP-2017  
 Account: NMZ

Project: BRUNSWICK

**CERTIFICATE OF ANALYSIS TM17181611**

Sample Description	Method Analyte Units LOR	WEI-21 Recvd Wt. kg	Au-ICP21 Au ppm	ME-MS41 Ag ppm	ME-MS41 Al %	ME-MS41 As ppm	ME-MS41 Au ppm	ME-MS41 B ppm	ME-MS41 Ba ppm	ME-MS41 Be ppm	ME-MS41 Bi ppm	ME-MS41 Ca %	ME-MS41 Cd ppm	ME-MS41 Ce ppm	ME-MS41 Co ppm	ME-MS41 Cr ppm
		0.02	0.001	0.01	0.01	0.1	0.02	10	10	0.05	0.01	0.01	0.01	0.02	0.1	1
V904096		1.55		0.11	1.13	5.0	0.02	<10	70	0.13	0.37	2.60	0.12	24.8	21.1	23
V904097		1.24		0.02	2.21	1.7	<0.02	<10	30	0.15	0.05	2.15	0.11	23.9	18.0	66
V904099		1.08		0.02	1.22	3.2	<0.02	<10	40	0.16	0.07	0.57	0.06	43.0	12.1	20
V904100		1.35		0.02	0.53	2.7	<0.02	<10	30	0.09	0.03	0.54	0.06	29.2	4.9	8
V904098		1.82		0.04	1.35	0.3	<0.02	<10	40	0.10	0.05	1.16	0.04	16.55	8.0	2
V904015		2.03		0.28	0.53	230	<0.02	<10	10	0.06	0.11	3.25	0.10	7.07	16.6	5
V904016		1.04		0.08	0.92	29.1	<0.02	<10	20	0.11	0.05	2.88	0.08	17.10	12.7	4
V904017		0.24	0.388	0.24	0.40	51.4	0.31	<10	10	0.07	0.19	1.07	0.11	9.63	14.4	3



ALS Canada Ltd.  
 2103 Dollarton Hwy  
 North Vancouver BC V7H 0A7  
 Phone: +1 (604) 984 0221 Fax: +1 (604) 984 0218  
 www.alsglobal.com/geochemistry

To: RAINY MOUNTAIN ROYALTY CORP  
 2489 BELLEVUE AVE  
 WEST VANCOUVER BC V7V 1E1

Page: 2 - B  
 Total # Pages: 2 (A - E)  
 Plus Appendix Pages  
 Finalized Date: 8-SEP-2017  
 Account: NMZ

Project: BRUNSWICK

**CERTIFICATE OF ANALYSIS TM17181611**

Sample Description	Method Analyte Units LOR	ME-MS41	ME-MS41	ME-MS41	ME-MS41	ME-MS41	ME-MS41	ME-MS41	ME-MS41	ME-MS41	ME-MS41	ME-MS41	ME-MS41	ME-MS41	ME-MS41	
		Cs ppm	Cu ppm	Fe %	Ga ppm	Ge ppm	Hf ppm	Hg ppm	In ppm	K %	La ppm	Li ppm	Mg %	Mn ppm	Mo ppm	Na %
V904096		0.27	38.0	3.47	3.58	<0.05	0.38	<0.01	0.015	0.09	12.9	12.8	0.68	734	0.98	0.02
V904097		0.13	11.3	3.75	8.70	0.05	0.18	<0.01	0.016	0.05	12.3	29.7	1.43	609	0.10	0.02
V904099		0.23	15.0	3.04	4.69	0.06	0.58	<0.01	0.013	0.08	23.4	13.2	0.49	444	0.22	0.04
V904100		0.18	10.1	2.16	2.37	<0.05	0.53	<0.01	0.012	0.05	14.7	5.0	0.16	357	1.64	0.05
V904098		0.09	21.2	2.54	5.65	<0.05	0.22	<0.01	0.012	0.07	8.3	14.6	0.61	372	0.11	0.02
V904015		0.13	57.5	3.92	1.96	<0.05	0.43	0.01	0.021	0.03	3.4	4.2	0.39	638	0.31	0.04
V904016		0.20	28.8	4.49	3.61	<0.05	0.12	0.01	0.019	0.04	8.0	7.5	0.34	708	0.36	0.05
V904017		0.13	32.3	4.13	1.30	<0.05	0.34	0.01	0.018	0.04	4.3	3.0	0.15	662	0.31	0.04





ALS Canada Ltd.  
 2103 Dollarton Hwy  
 North Vancouver BC V7H 0A7  
 Phone: +1 (604) 984 0221 Fax: +1 (604) 984 0218  
 www.alsglobal.com/geochemistry

To: RAINY MOUNTAIN ROYALTY CORP  
 2489 BELLEVUE AVE  
 WEST VANCOUVER BC V7V 1E1

Page: 2 - C  
 Total # Pages: 2 (A - E)  
 Plus Appendix Pages  
 Finalized Date: 8-SEP-2017  
 Account: NMZ

Project: BRUNSWICK

**CERTIFICATE OF ANALYSIS TM17181611**

Sample Description	Method Analyte Units LOR	ME-MS41 Nb ppm	ME-MS41 Ni ppm	ME-MS41 P ppm	ME-MS41 Pb ppm	ME-MS41 Rb ppm	ME-MS41 Re ppm	ME-MS41 S %	ME-MS41 Sb ppm	ME-MS41 Sc ppm	ME-MS41 Se ppm	ME-MS41 Sn ppm	ME-MS41 Sr ppm	ME-MS41 Ta ppm	ME-MS41 Te ppm	ME-MS41 Th ppm
V904096		<0.05	46.7	610	2.7	3.0	<0.001	0.40	0.09	2.1	0.6	<0.2	40.2	<0.01	0.03	1.8
V904097		<0.05	58.2	490	1.9	1.9	<0.001	<0.01	0.07	4.7	0.3	<0.2	42.9	<0.01	<0.01	2.0
V904099		<0.05	35.4	680	2.2	3.7	<0.001	0.01	0.07	2.2	0.3	<0.2	19.4	<0.01	<0.01	3.2
V904100		<0.05	11.3	530	1.0	2.1	<0.001	<0.01	0.12	2.1	<0.2	<0.2	10.7	<0.01	<0.01	1.5
V904098		<0.05	2.3	650	1.1	2.2	<0.001	<0.01	0.05	2.4	0.5	0.2	30.1	<0.01	0.01	2.7
V904015		<0.05	7.1	680	1.0	0.9	<0.001	0.75	0.55	3.0	0.8	<0.2	30.1	<0.01	0.01	0.5
V904016		<0.05	8.5	980	0.9	1.4	<0.001	0.20	0.26	3.6	0.4	<0.2	20.3	<0.01	0.01	1.0
V904017		<0.05	8.0	660	1.4	1.0	<0.001	0.78	0.33	2.4	0.3	<0.2	12.5	<0.01	0.05	0.5



ALS Canada Ltd.  
 2103 Dollarton Hwy  
 North Vancouver BC V7H 0A7  
 Phone: +1 (604) 984 0221 Fax: +1 (604) 984 0218  
 www.alsglobal.com/geochemistry

To: RAINY MOUNTAIN ROYALTY CORP  
 2489 BELLEVUE AVE  
 WEST VANCOUVER BC V7V 1E1

Page: 2 - D  
 Total # Pages: 2 (A - E)  
 Plus Appendix Pages  
 Finalized Date: 8-SEP-2017  
 Account: NMZ

Project: BRUNSWICK

**CERTIFICATE OF ANALYSIS TM17181611**

Sample Description	Method Analyte Units LOR	ME-MS41	ME-MS41	ME-MS41	ME-MS41	ME-MS41	ME-MS41	ME-MS41	ME-MS41	ME-XRF06	ME-XRF06	ME-XRF06	ME-XRF06	ME-XRF06	ME-XRF06	ME-XRF06
		Ti %	Ti ppm	U ppm	V ppm	W ppm	Y ppm	Zn ppm	Zr ppm	SiO2 %	Al2O3 %	Fe2O3 %	CaO %	MgO %	Na2O %	K2O %
V904096		<0.005	0.02	0.18	13	<0.05	3.07	68	18.1							
V904097		0.011	<0.02	0.15	42	<0.05	4.22	80	8.4							
V904099		<0.005	0.02	0.39	16	<0.05	3.89	67	22.4							
V904100		0.013	<0.02	0.13	6	<0.05	3.32	40	24.6							
V904098		0.009	<0.02	0.29	14	<0.05	5.41	46	8.5	67.29	15.11	4.61	2.54	1.21	4.42	1.35
V904015		<0.005	<0.02	0.08	8	<0.05	2.70	58	18.6							
V904016		<0.005	<0.02	0.14	15	<0.05	4.88	76	8.4							
V904017		<0.005	<0.02	0.08	5	<0.05	2.72	50	14.8							



ALS Canada Ltd.  
 2103 Dollarton Hwy  
 North Vancouver BC V7H 0A7  
 Phone: +1 (604) 984 0221 Fax: +1 (604) 984 0218  
 www.alsglobal.com/geochemistry

To: RAINY MOUNTAIN ROYALTY CORP  
 2489 BELLEVUE AVE  
 WEST VANCOUVER BC V7V 1E1

Page: 2 - E  
 Total # Pages: 2 (A - E)  
 Plus Appendix Pages  
 Finalized Date: 8-SEP-2017  
 Account: NMZ

Project: BRUNSWICK

CERTIFICATE OF ANALYSIS	TM17181611
-------------------------	------------

	Method	Analyte	Units	LOR	ME-XRF06	ME-XRF06	ME-XRF06	ME-XRF06	ME-XRF06	ME-XRF06	ME-XRF06	ME-XRF06
Sample Description					Cr2O3	TiO2	MnO	P2O5	SrO	BaO	LOI	Total
					%	%	%	%	%	%	%	%
V904096					0.01	0.01	0.01	0.001	0.01	0.01	0.01	0.01
V904097												
V904099												
V904100												
V904098					<0.01	0.57	0.05	0.155	0.02	0.06	2.62	100.00
V904015												
V904016												
V904017												



ALS Canada Ltd.  
 2103 Dollarton Hwy  
 North Vancouver BC V7H 0A7  
 Phone: +1 (604) 984 0221 Fax: +1 (604) 984 0218  
 www.alsglobal.com/geochemistry

To: RAINY MOUNTAIN ROYALTY CORP  
 2489 BELLEVUE AVE  
 WEST VANCOUVER BC V7V 1E1

Page: Appendix 1  
 Total # Appendix Pages: 1  
 Finalized Date: 8-SEP-2017  
 Account: NMZ

Project: BRUNSWICK

**CERTIFICATE OF ANALYSIS TM17181611**

**CERTIFICATE COMMENTS**

	<b>ANALYTICAL COMMENTS</b>												
Applies to Method:	Gold determinations by this method are semi-quantitative due to the small sample weight used (0.5g). ME-MS41												
<b>LABORATORY ADDRESSES</b>													
Applies to Method:	<table style="width: 100%; border: none;"> <tr> <td colspan="4" style="text-align: center;">Processed at ALS Vancouver located at 2103 Dollarton Hwy, North Vancouver, BC, Canada.</td> </tr> <tr> <td style="width: 25%;">Au-ICP21</td> <td style="width: 25%;">ME-MS41</td> <td style="width: 25%;">ME-XRF06</td> <td style="width: 25%;">OA-GRA06</td> </tr> </table>	Processed at ALS Vancouver located at 2103 Dollarton Hwy, North Vancouver, BC, Canada.				Au-ICP21	ME-MS41	ME-XRF06	OA-GRA06				
Processed at ALS Vancouver located at 2103 Dollarton Hwy, North Vancouver, BC, Canada.													
Au-ICP21	ME-MS41	ME-XRF06	OA-GRA06										
Applies to Method:	<table style="width: 100%; border: none;"> <tr> <td colspan="4" style="text-align: center;">Processed at ALS Timmins located at Unit 10 - 2090 Riverside Drive, Timmins, ON, Canada.</td> </tr> <tr> <td style="width: 25%;">CRU-31</td> <td style="width: 25%;">CRU-QC</td> <td style="width: 25%;">LOG-22</td> <td style="width: 25%;">PUL-31</td> </tr> <tr> <td>PUL-QC</td> <td>SPL-21</td> <td>WEI-21</td> <td></td> </tr> </table>	Processed at ALS Timmins located at Unit 10 - 2090 Riverside Drive, Timmins, ON, Canada.				CRU-31	CRU-QC	LOG-22	PUL-31	PUL-QC	SPL-21	WEI-21	
Processed at ALS Timmins located at Unit 10 - 2090 Riverside Drive, Timmins, ON, Canada.													
CRU-31	CRU-QC	LOG-22	PUL-31										
PUL-QC	SPL-21	WEI-21											



ALS Canada Ltd.  
 2103 Dollarton Hwy  
 North Vancouver BC V7H 0A7  
 Phone: +1 (604) 984 0221 Fax: +1 (604) 984 0218  
 www.alsglobal.com/geochemistry

To: RAINY MOUNTAIN ROYALTY CORP  
 2489 BELLEVUE AVE  
 WEST VANCOUVER BC V7V 1E1

Page: 1  
 Total # Pages: 2 (A - D)  
 Plus Appendix Pages  
 Finalized Date: 9-SEP-2017  
 Account: NMZ

**CERTIFICATE TM17188308**

Project: BRUNSWICK

This report is for 14 Rock samples submitted to our lab in Timmins, ON, Canada on 4-SEP-2017.

The following have access to data associated with this certificate:

DOUG MASON	ROBERT MIDDLETON
------------	------------------

SAMPLE PREPARATION	
ALS CODE	DESCRIPTION
WEI-21	Received Sample Weight
LOG-22	Sample login - Rcd w/o BarCode
CRU-31	Fine crushing - 70% <2mm
SPL-21	Split sample - riffle splitter
CRU-QC	Crushing QC Test
PUL-QC	Pulverizing QC Test
PUL-31	Pulverize split to 85% <75 um

ANALYTICAL PROCEDURES	
ALS CODE	DESCRIPTION
ME-MS41	Ultra Trace Aqua Regia ICP-MS

To: RAINY MOUNTAIN ROYALTY CORP  
 ATTN: ROBERT MIDDLETON  
 1158 RUSSELL STREET  
 THUNDER BAY ON P7B 5N2

This is the Final Report and supersedes any preliminary report with this certificate number. Results apply to samples as submitted. All pages of this report have been checked and approved for release.

\*\*\*\*\* See Appendix Page for comments regarding this certificate \*\*\*\*\*

Signature:   
 Colin Ramshaw, Vancouver Laboratory Manager



ALS Canada Ltd.  
 2103 Dollarton Hwy  
 North Vancouver BC V7H 0A7  
 Phone: +1 (604) 984 0221 Fax: +1 (604) 984 0218  
 www.alsglobal.com/geochemistry

To: RAINY MOUNTAIN ROYALTY CORP  
 2489 BELLEVUE AVE  
 WEST VANCOUVER BC V7V 1E1

Page: 2 - A  
 Total # Pages: 2 (A - D)  
 Plus Appendix Pages  
 Finalized Date: 9-SEP-2017  
 Account: NMZ

Project: BRUNSWICK

**CERTIFICATE OF ANALYSIS TM17188308**

Sample Description	Method Analyte Units LOR	WEI-21 Recvd Wt. kg	ME-MS41 Ag ppm	ME-MS41 Al %	ME-MS41 As ppm	ME-MS41 Au ppm	ME-MS41 B ppm	ME-MS41 Ba ppm	ME-MS41 Be ppm	ME-MS41 Bi ppm	ME-MS41 Ca %	ME-MS41 Cd ppm	ME-MS41 Ce ppm	ME-MS41 Co ppm	ME-MS41 Cr ppm	ME-MS41 Cs ppm
		0.02	0.01	0.01	0.1	0.02	10	10	0.05	0.01	0.01	0.01	0.02	0.1	1	0.05
W074501		1.58	0.09	3.99	247	<0.02	<10	10	0.18	0.03	1.63	0.26	4.43	55.8	251	0.69
W074502		1.29	0.06	0.90	125.5	0.06	<10	10	<0.05	0.01	0.21	0.06	1.89	10.0	31	0.12
W074503		2.40	0.07	3.15	367	0.09	<10	20	0.13	0.03	5.23	0.31	5.85	45.5	90	0.46
W074504		1.22	0.03	3.64	33.1	<0.02	<10	20	0.07	0.02	3.23	0.10	7.97	43.3	173	0.40
W074505		2.13	0.03	0.81	24.2	<0.02	<10	30	0.13	0.04	1.16	0.13	21.6	21.0	22	0.33
W074506		1.80	0.02	0.24	17.7	<0.02	<10	20	0.07	0.03	2.24	0.11	13.55	11.3	15	0.18
W074507		2.07	0.03	0.27	46.2	<0.02	<10	20	0.06	0.05	2.41	0.11	8.49	16.6	14	0.21
W074508		2.41	0.02	2.16	76.2	<0.02	<10	<10	<0.05	0.01	8.17	0.05	5.10	36.2	73	0.24
W074509		1.51	0.02	2.59	151.5	<0.02	<10	10	0.08	0.01	5.50	0.07	4.45	44.1	142	0.65
W074510		3.82	0.04	1.81	136.0	<0.02	<10	10	<0.05	0.02	6.08	0.14	4.57	41.8	101	0.25
W074511		2.50	0.02	0.46	101.5	<0.02	<10	10	<0.05	0.01	6.64	0.07	3.59	22.8	24	0.19
W074512		3.45	0.45	1.90	5.5	<0.02	<10	70	0.24	0.77	0.77	0.55	35.7	14.9	6	0.41
W074513		1.01	0.01	0.54	68.1	<0.02	<10	20	0.07	0.02	3.37	0.08	6.35	15.6	31	0.18
W074514		2.31	0.02	2.86	5.5	<0.02	<10	10	<0.05	0.01	4.13	0.08	4.17	47.8	190	0.14



ALS Canada Ltd.  
 2103 Dollarton Hwy  
 North Vancouver BC V7H 0A7  
 Phone: +1 (604) 984 0221 Fax: +1 (604) 984 0218  
 www.alsglobal.com/geochemistry

To: RAINY MOUNTAIN ROYALTY CORP  
 2489 BELLEVUE AVE  
 WEST VANCOUVER BC V7V 1E1

Page: 2 - B  
 Total # Pages: 2 (A - D)  
 Plus Appendix Pages  
 Finalized Date: 9-SEP-2017  
 Account: NMZ

Project: BRUNSWICK

**CERTIFICATE OF ANALYSIS TM17188308**

Sample Description	Method Analyte Units LOR	ME-MS41	ME-MS41	ME-MS41	ME-MS41	ME-MS41	ME-MS41	ME-MS41	ME-MS41	ME-MS41	ME-MS41	ME-MS41	ME-MS41	ME-MS41	ME-MS41	
		Cu ppm	Fe %	Ga ppm	Ge ppm	Hf ppm	Hg ppm	In ppm	K %	La ppm	Li ppm	Mg %	Mn ppm	Mo ppm	Na %	Nb ppm
		0.2	0.01	0.05	0.05	0.02	0.01	0.005	0.01	0.2	0.1	0.01	5	0.05	0.01	0.05
W074501		131.5	8.32	16.05	0.26	0.08	0.02	0.045	0.01	2.5	21.7	3.08	2030	0.34	0.06	0.05
W074502		135.0	1.94	2.29	0.10	0.02	0.01	0.051	0.02	2.2	6.0	0.61	549	0.11	0.02	<0.05
W074503		158.5	6.21	8.09	0.14	0.05	0.03	0.058	0.07	2.5	25.1	2.29	1580	0.22	0.04	0.10
W074504		92.8	6.66	10.25	0.13	0.04	0.01	0.045	0.05	4.4	28.3	1.92	1610	0.09	0.05	<0.05
W074505		18.4	3.22	2.79	0.12	0.27	0.01	0.012	0.04	11.1	6.9	0.45	629	0.42	0.04	<0.05
W074506		11.1	2.32	0.87	0.11	0.17	0.01	0.013	0.03	7.3	2.0	0.57	511	0.35	0.03	<0.05
W074507		32.1	3.09	0.85	0.10	0.24	0.01	0.024	0.04	4.7	2.0	0.69	703	0.97	0.03	<0.05
W074508		88.2	6.41	5.74	0.12	<0.02	<0.01	0.077	0.02	2.4	13.4	2.14	1580	0.10	0.04	<0.05
W074509		103.0	7.43	7.01	0.13	<0.02	<0.01	0.034	0.04	3.4	16.2	3.05	1800	0.09	0.06	<0.05
W074510		89.9	7.91	5.44	0.11	0.02	0.01	0.069	0.02	1.8	11.2	2.10	1640	0.10	0.06	<0.05
W074511		54.2	5.59	1.40	0.11	<0.02	0.01	0.047	0.02	1.5	2.9	1.81	1910	0.09	0.05	<0.05
W074512		26.7	3.75	7.19	0.15	0.37	0.02	0.036	0.21	20.6	20.3	1.04	586	0.34	0.03	0.26
W074513		16.8	3.65	1.73	0.12	0.02	0.01	0.036	0.01	6.3	2.9	0.43	1490	0.14	0.04	0.07
W074514		110.0	7.38	8.01	0.13	<0.02	<0.01	0.042	0.01	4.1	16.5	3.19	1410	0.08	0.06	<0.05



ALS Canada Ltd.  
 2103 Dollarton Hwy  
 North Vancouver BC V7H 0A7  
 Phone: +1 (604) 984 0221 Fax: +1 (604) 984 0218  
 www.alsglobal.com/geochemistry

To: RAINY MOUNTAIN ROYALTY CORP  
 2489 BELLEVUE AVE  
 WEST VANCOUVER BC V7V 1E1

Page: 2 - C  
 Total # Pages: 2 (A - D)  
 Plus Appendix Pages  
 Finalized Date: 9-SEP-2017  
 Account: NMZ

Project: BRUNSWICK

**CERTIFICATE OF ANALYSIS TM17188308**

Sample Description	Method Analyte Units LOR	ME-MS41	ME-MS41	ME-MS41	ME-MS41	ME-MS41	ME-MS41	ME-MS41	ME-MS41	ME-MS41	ME-MS41	ME-MS41	ME-MS41	ME-MS41	ME-MS41	
		Ni	P	Pb	Rb	Re	S	Sb	Sc	Se	Sn	Sr	Ta	Te	Th	Ti
		ppm	ppm	ppm	ppm	ppm	%	ppm	ppm	ppm	ppm	ppm	ppm	ppm	ppm	%
		0.2	10	0.2	0.1	0.001	0.01	0.05	0.1	0.2	0.2	0.2	0.01	0.01	0.2	0.005
W074501		162.0	310	1.6	0.7	0.002	0.33	0.78	25.4	0.8	0.4	7.9	<0.01	0.02	0.3	0.287
W074502		25.6	50	0.5	0.7	<0.001	0.06	0.32	4.4	0.3	<0.2	2.6	<0.01	0.01	<0.2	0.005
W074503		134.5	280	1.2	2.6	0.001	1.09	0.88	14.5	1.1	0.3	15.1	<0.01	0.03	0.2	0.249
W074504		144.5	360	0.7	1.9	<0.001	0.10	2.20	17.1	0.5	<0.2	15.2	<0.01	0.02	0.3	<0.005
W074505		43.5	560	2.6	2.0	<0.001	0.06	2.75	2.7	0.4	<0.2	37.2	<0.01	0.01	1.2	<0.005
W074506		23.3	360	2.0	1.1	<0.001	0.01	0.52	1.8	0.4	<0.2	59.3	<0.01	0.01	0.8	<0.005
W074507		42.7	430	2.9	1.3	<0.001	0.46	13.45	2.3	0.5	<0.2	72.6	<0.01	<0.01	0.6	<0.005
W074508		75.2	400	0.3	0.8	0.001	0.03	0.39	20.9	0.6	<0.2	41.5	<0.01	<0.01	<0.2	<0.005
W074509		143.0	210	0.2	1.9	0.001	0.01	0.59	19.8	0.5	<0.2	24.1	<0.01	0.02	<0.2	<0.005
W074510		121.0	320	0.5	0.9	<0.001	0.14	0.75	20.8	0.7	<0.2	23.0	<0.01	0.01	<0.2	<0.005
W074511		48.4	180	0.5	0.8	<0.001	0.05	0.48	11.3	0.6	<0.2	30.1	<0.01	0.01	<0.2	<0.005
W074512		22.4	1040	26.9	8.3	<0.001	0.03	0.19	3.7	0.4	0.4	33.0	0.01	0.08	3.1	0.158
W074513		39.2	140	0.5	0.8	<0.001	0.02	1.02	9.8	0.3	<0.2	18.7	<0.01	0.01	0.3	<0.005
W074514		157.0	190	0.2	0.3	<0.001	0.10	0.47	23.1	0.6	<0.2	12.0	<0.01	0.01	0.2	<0.005





ALS Canada Ltd.  
 2103 Dollarton Hwy  
 North Vancouver BC V7H 0A7  
 Phone: +1 (604) 984 0221 Fax: +1 (604) 984 0218  
 www.alsglobal.com/geochemistry

To: RAINY MOUNTAIN ROYALTY CORP  
 2489 BELLEVUE AVE  
 WEST VANCOUVER BC V7V 1E1

Page: 2 - D  
 Total # Pages: 2 (A - D)  
 Plus Appendix Pages  
 Finalized Date: 9-SEP-2017  
 Account: NMZ

Project: BRUNSWICK

**CERTIFICATE OF ANALYSIS TM17188308**

Sample Description	Method	ME-MS41	ME-MS41	ME-MS41	ME-MS41	ME-MS41	ME-MS41	
	Analyte	Tl	U	V	W	Y	Zn	
	Units	ppm	ppm	ppm	ppm	ppm	ppm	
LOR		0.02	0.05	1	0.05	0.05	2	
Zr		0.5						
W074501		<0.02	<0.05	242	0.10	10.40	144	2.8
W074502		<0.02	<0.05	28	<0.05	1.46	30	0.7
W074503		0.02	<0.05	110	0.09	13.30	152	1.7
W074504		0.03	<0.05	127	<0.05	3.03	104	2.0
W074505		0.02	0.16	14	<0.05	3.02	57	12.4
W074506		<0.02	0.14	4	<0.05	2.76	46	7.3
W074507		0.02	0.11	6	<0.05	3.45	67	10.6
W074508		<0.02	<0.05	82	<0.05	5.28	53	0.5
W074509		0.02	<0.05	91	<0.05	2.80	67	0.6
W074510		<0.02	<0.05	76	<0.05	3.85	81	0.8
W074511		<0.02	<0.05	22	<0.05	3.53	45	0.5
W074512		0.06	0.32	31	0.11	9.16	192	13.1
W074513		0.02	0.05	23	<0.05	3.60	27	1.1
W074514		<0.02	<0.05	122	<0.05	1.68	73	0.5



ALS Canada Ltd.  
 2103 Dollarton Hwy  
 North Vancouver BC V7H 0A7  
 Phone: +1 (604) 984 0221 Fax: +1 (604) 984 0218  
 www.alsglobal.com/geochemistry

To: RAINY MOUNTAIN ROYALTY CORP  
 2489 BELLEVUE AVE  
 WEST VANCOUVER BC V7V 1E1

Page: Appendix 1  
 Total # Appendix Pages: 1  
 Finalized Date: 9-SEP-2017  
 Account: NMZ

Project: BRUNSWICK

<b>CERTIFICATE OF ANALYSIS TM17188308</b>
---

<b>CERTIFICATE COMMENTS</b>									
	<b>ANALYTICAL COMMENTS</b>								
Applies to Method:	Gold determinations by this method are semi-quantitative due to the small sample weight used (0.5g). ME-MS41								
	<b>LABORATORY ADDRESSES</b>								
Applies to Method:	Processed at ALS Vancouver located at 2103 Dollarton Hwy, North Vancouver, BC, Canada. ME-MS41								
Applies to Method:	Processed at ALS Timmins located at Unit 10 - 2090 Riverside Drive, Timmins, ON, Canada.								
	<table style="width: 100%; border: none;"> <tr> <td style="width: 33%;">CRU-31</td> <td style="width: 33%;">CRU-QC</td> <td style="width: 33%;">LOG-22</td> <td style="width: 15%;"></td> </tr> <tr> <td>PUL-QC</td> <td>SPL-21</td> <td>WEI-21</td> <td>PUL-31</td> </tr> </table>	CRU-31	CRU-QC	LOG-22		PUL-QC	SPL-21	WEI-21	PUL-31
CRU-31	CRU-QC	LOG-22							
PUL-QC	SPL-21	WEI-21	PUL-31						



ALS Canada Ltd.  
 2103 Dollarton Hwy  
 North Vancouver BC V7H 0A7  
 Phone: +1 (604) 984 0221 Fax: +1 (604) 984 0218  
 www.alsglobal.com/geochemistry

To: RAINY MOUNTAIN ROYALTY CORP  
 2489 BELLEVUE AVE  
 WEST VANCOUVER BC V7V 1E1

Page: 1  
 Total # Pages: 2 (A - D)  
 Plus Appendix Pages  
 Finalized Date: 6-SEP-2017  
 Account: NMZ

**CERTIFICATE TM17184224**

Project: BRUNSWICK

This report is for 12 Rock samples submitted to our lab in Timmins, ON, Canada on 30-AUG-2017.

The following have access to data associated with this certificate:

DOUG MASON	ROBERT MIDDLETON
------------	------------------

SAMPLE PREPARATION	
ALS CODE	DESCRIPTION
WEI-21	Received Sample Weight
LOG-22	Sample login - Rcd w/o BarCode
CRU-31	Fine crushing - 70% <2mm
SPL-21	Split sample - riffle splitter
CRU-QC	Crushing QC Test
PUL-QC	Pulverizing QC Test
PUL-31	Pulverize split to 85% <75 um

ANALYTICAL PROCEDURES	
ALS CODE	DESCRIPTION
ME-MS41	Ultra Trace Aqua Regia ICP-MS

To: RAINY MOUNTAIN ROYALTY CORP  
 ATTN: ROBERT MIDDLETON  
 1158 RUSSELL STREET  
 THUNDER BAY ON P7B 5N2

This is the Final Report and supersedes any preliminary report with this certificate number. Results apply to samples as submitted. All pages of this report have been checked and approved for release.

\*\*\*\*\* See Appendix Page for comments regarding this certificate \*\*\*\*\*

Signature:   
 Colin Ramshaw, Vancouver Laboratory Manager



ALS Canada Ltd.  
 2103 Dollarton Hwy  
 North Vancouver BC V7H 0A7  
 Phone: +1 (604) 984 0221 Fax: +1 (604) 984 0218  
 www.alsglobal.com/geochemistry

To: RAINY MOUNTAIN ROYALTY CORP  
 2489 BELLEVUE AVE  
 WEST VANCOUVER BC V7V 1E1

Page: 2 - A  
 Total # Pages: 2 (A - D)  
 Plus Appendix Pages  
 Finalized Date: 6-SEP-2017  
 Account: NMZ

Project: BRUNSWICK

**CERTIFICATE OF ANALYSIS TM17184224**

Sample Description	Method Analyte Units LOR	WEI-21 Recvd Wt. kg	ME-MS41 Ag ppm	ME-MS41 Al %	ME-MS41 As ppm	ME-MS41 Au ppm	ME-MS41 B ppm	ME-MS41 Ba ppm	ME-MS41 Be ppm	ME-MS41 Bi ppm	ME-MS41 Ca %	ME-MS41 Cd ppm	ME-MS41 Ce ppm	ME-MS41 Co ppm	ME-MS41 Cr ppm	ME-MS41 Cs ppm
		0.02	0.01	0.01	0.1	0.02	10	10	0.05	0.01	0.01	0.01	0.02	0.1	1	0.05
V904018		0.74	0.01	0.14	10.9	<0.02	<10	20	0.07	0.03	1.35	0.10	17.40	10.6	8	0.20
V904019		2.21	0.01	0.59	44.3	<0.02	<10	40	0.12	0.04	3.53	0.06	28.7	16.4	16	0.27
V904020		1.66	0.01	3.43	181.0	<0.02	<10	10	0.10	0.02	10.55	0.11	6.99	66.9	597	0.22
V904021		1.78	0.01	4.13	497	<0.02	<10	30	0.17	0.02	10.00	0.16	5.54	101.5	1380	0.16
V904022		0.57	0.04	7.36	132.0	<0.02	<10	20	0.38	0.08	2.45	0.03	11.40	75.1	948	0.60
V904023		1.02	0.04	2.95	95.9	0.02	<10	20	<0.05	0.02	5.21	0.09	3.87	39.9	150	0.17
V904024		1.30	0.03	4.78	5.7	<0.02	<10	10	0.05	0.02	3.68	0.05	5.24	50.3	175	0.22
V904025		2.44	0.02	4.45	133.0	<0.02	<10	30	0.13	0.03	1.81	0.09	9.57	51.0	177	0.43
V904026		2.97	0.06	0.11	28.2	<0.02	<10	<10	<0.05	0.02	0.40	0.05	0.78	4.8	17	0.06
V904027		3.44	0.04	5.04	23.8	<0.02	<10	20	0.08	0.02	5.11	0.07	4.56	49.7	205	0.19
V904028		1.92	0.03	1.17	156.0	0.06	<10	10	<0.05	0.02	7.69	0.14	3.68	29.0	61	0.16
V904029		4.06	0.03	0.09	1885	0.12	<10	10	<0.05	0.02	0.92	0.05	1.20	5.1	21	0.10



ALS Canada Ltd.  
 2103 Dollarton Hwy  
 North Vancouver BC V7H 0A7  
 Phone: +1 (604) 984 0221 Fax: +1 (604) 984 0218  
 www.alsglobal.com/geochemistry

To: RAINY MOUNTAIN ROYALTY CORP  
 2489 BELLEVUE AVE  
 WEST VANCOUVER BC V7V 1E1

Page: 2 - B  
 Total # Pages: 2 (A - D)  
 Plus Appendix Pages  
 Finalized Date: 6-SEP-2017  
 Account: NMZ

Project: BRUNSWICK

**CERTIFICATE OF ANALYSIS TM17184224**

Sample Description	Method Analyte Units LOR	ME-MS41 Cu ppm	ME-MS41 Fe %	ME-MS41 Ga ppm	ME-MS41 Ge ppm	ME-MS41 Hf ppm	ME-MS41 Hg ppm	ME-MS41 In ppm	ME-MS41 K %	ME-MS41 La ppm	ME-MS41 Li ppm	ME-MS41 Mg %	ME-MS41 Mn ppm	ME-MS41 Mo ppm	ME-MS41 Na %	ME-MS41 Nb ppm
		0.2	0.01	0.05	0.05	0.02	0.01	0.005	0.01	0.2	0.1	0.01	5	0.05	0.01	0.05
V904018		6.3	2.27	0.49	<0.05	0.28	0.03	0.010	0.04	9.3	0.7	0.28	473	0.22	0.03	<0.05
V904019		5.7	3.59	2.18	<0.05	0.41	<0.01	0.011	0.08	14.6	3.7	1.18	790	0.46	0.05	<0.05
V904020		5.1	11.85	11.35	0.07	0.04	0.01	0.035	0.02	2.8	26.4	5.59	2430	0.22	0.03	<0.05
V904021		3.7	14.55	13.45	0.10	0.04	0.01	0.044	0.02	2.1	30.9	6.45	3150	0.13	0.02	<0.05
V904022		16.9	11.95	20.2	0.19	0.07	0.01	0.039	0.04	6.1	63.0	5.32	1090	0.10	0.03	<0.05
V904023		158.5	8.34	9.14	<0.05	0.02	0.01	0.038	0.01	1.8	17.8	3.76	1620	0.07	0.04	<0.05
V904024		121.0	9.18	12.80	0.07	0.02	0.01	0.062	0.01	3.9	24.3	3.32	1220	0.10	0.03	<0.05
V904025		128.5	9.90	12.45	0.07	0.04	0.01	0.103	0.02	3.6	26.9	2.91	1160	0.15	0.04	<0.05
V904026		175.5	1.29	0.30	<0.05	<0.02	0.02	0.036	<0.01	1.1	0.6	0.09	397	0.10	0.02	<0.05
V904027		122.5	9.04	12.70	0.12	0.04	<0.01	0.046	0.03	1.7	28.5	3.19	1680	0.09	0.02	0.09
V904028		63.4	6.49	3.58	<0.05	0.02	0.01	0.038	0.02	1.4	6.6	2.75	1520	0.12	0.06	<0.05
V904029		13.0	1.89	0.27	<0.05	<0.02	0.01	0.011	0.01	3.6	0.4	0.11	610	0.11	0.03	<0.05



ALS Canada Ltd.  
 2103 Dollarton Hwy  
 North Vancouver BC V7H 0A7  
 Phone: +1 (604) 984 0221 Fax: +1 (604) 984 0218  
 www.alsglobal.com/geochemistry

To: RAINY MOUNTAIN ROYALTY CORP  
 2489 BELLEVUE AVE  
 WEST VANCOUVER BC V7V 1E1

Page: 2 - C  
 Total # Pages: 2 (A - D)  
 Plus Appendix Pages  
 Finalized Date: 6-SEP-2017  
 Account: NMZ

Project: BRUNSWICK

**CERTIFICATE OF ANALYSIS TM17184224**

Sample Description	Method Analyte Units LOR	ME-MS41	ME-MS41	ME-MS41	ME-MS41	ME-MS41	ME-MS41	ME-MS41	ME-MS41	ME-MS41	ME-MS41	ME-MS41	ME-MS41	ME-MS41	ME-MS41	
		Ni	P	Pb	Rb	Re	S	Sb	Sc	Se	Sn	Sr	Ta	Te	Th	Ti
		ppm	ppm	ppm	ppm	ppm	%	ppm	ppm	ppm	ppm	ppm	ppm	ppm	ppm	%
		0.2	10	0.2	0.1	0.001	0.01	0.05	0.1	0.2	0.2	0.2	0.01	0.01	0.2	0.005
V904018		20.5	310	2.7	1.1	<0.001	0.02	0.77	1.9	<0.2	<0.2	54.4	<0.01	<0.01	1.3	<0.005
V904019		37.1	680	2.4	2.4	<0.001	0.10	0.89	3.3	0.3	<0.2	107.5	<0.01	<0.01	2.2	<0.005
V904020		260	100	1.5	0.8	0.001	0.01	0.80	32.5	0.3	<0.2	174.5	<0.01	0.01	0.2	<0.005
V904021		582	70	1.8	0.7	0.001	0.02	1.25	38.9	0.5	<0.2	208	<0.01	0.01	<0.2	0.005
V904022		312	280	2.6	1.8	<0.001	0.01	0.48	30.6	<0.2	0.2	60.2	<0.01	0.03	0.5	0.005
V904023		71.7	220	0.3	0.5	<0.001	0.04	0.16	33.6	0.2	<0.2	21.4	<0.01	0.01	<0.2	<0.005
V904024		105.0	250	0.2	0.4	0.001	0.04	0.15	37.7	0.3	<0.2	20.3	<0.01	0.02	0.2	0.005
V904025		111.5	290	0.6	2.3	<0.001	0.02	0.37	38.2	0.3	<0.2	9.1	<0.01	0.01	0.3	<0.005
V904026		19.1	50	0.5	0.3	<0.001	0.05	0.33	3.2	<0.2	<0.2	2.7	<0.01	<0.01	<0.2	<0.005
V904027		125.5	260	0.3	1.2	0.001	0.05	0.14	26.6	0.5	0.2	21.4	<0.01	0.03	<0.2	0.206
V904028		84.4	170	0.4	0.6	<0.001	0.05	0.62	12.8	0.3	<0.2	20.2	<0.01	0.01	<0.2	<0.005
V904029		14.3	350	0.3	0.5	<0.001	0.06	0.65	3.2	<0.2	<0.2	5.3	<0.01	0.02	<0.2	<0.005



ALS Canada Ltd.  
 2103 Dollarton Hwy  
 North Vancouver BC V7H 0A7  
 Phone: +1 (604) 984 0221 Fax: +1 (604) 984 0218  
 www.alsglobal.com/geochemistry

To: RAINY MOUNTAIN ROYALTY CORP  
 2489 BELLEVUE AVE  
 WEST VANCOUVER BC V7V 1E1

Page: 2 - D  
 Total # Pages: 2 (A - D)  
 Plus Appendix Pages  
 Finalized Date: 6-SEP-2017  
 Account: NMZ

Project: BRUNSWICK

**CERTIFICATE OF ANALYSIS TM17184224**

Sample Description	Method Analyte Units LOR	ME-MS41	ME-MS41	ME-MS41	ME-MS41	ME-MS41	ME-MS41	ME-MS41
		Tl ppm	U ppm	V ppm	W ppm	Y ppm	Zn ppm	Zr ppm
		0.02	0.05	1	0.05	0.05	2	0.5
V904018		0.02	0.25	3	<0.05	3.36	49	10.8
V904019		0.02	0.41	9	<0.05	4.21	39	18.1
V904020		<0.02	<0.05	118	<0.05	2.15	180	1.6
V904021		<0.02	<0.05	141	<0.05	6.92	212	1.4
V904022		0.06	<0.05	215	<0.05	2.64	224	2.6
V904023		<0.02	<0.05	145	<0.05	2.43	68	1.0
V904024		<0.02	<0.05	177	<0.05	2.51	96	0.5
V904025		<0.02	0.05	179	<0.05	7.74	103	1.0
V904026		<0.02	<0.05	5	<0.05	1.22	22	<0.5
V904027		<0.02	<0.05	178	<0.05	10.30	95	0.7
V904028		<0.02	<0.05	55	<0.05	1.88	78	1.0
V904029		<0.02	<0.05	4	<0.05	2.43	24	<0.5



ALS Canada Ltd.  
 2103 Dollarton Hwy  
 North Vancouver BC V7H 0A7  
 Phone: +1 (604) 984 0221 Fax: +1 (604) 984 0218  
 www.alsglobal.com/geochemistry

To: RAINY MOUNTAIN ROYALTY CORP  
 2489 BELLEVUE AVE  
 WEST VANCOUVER BC V7V 1E1

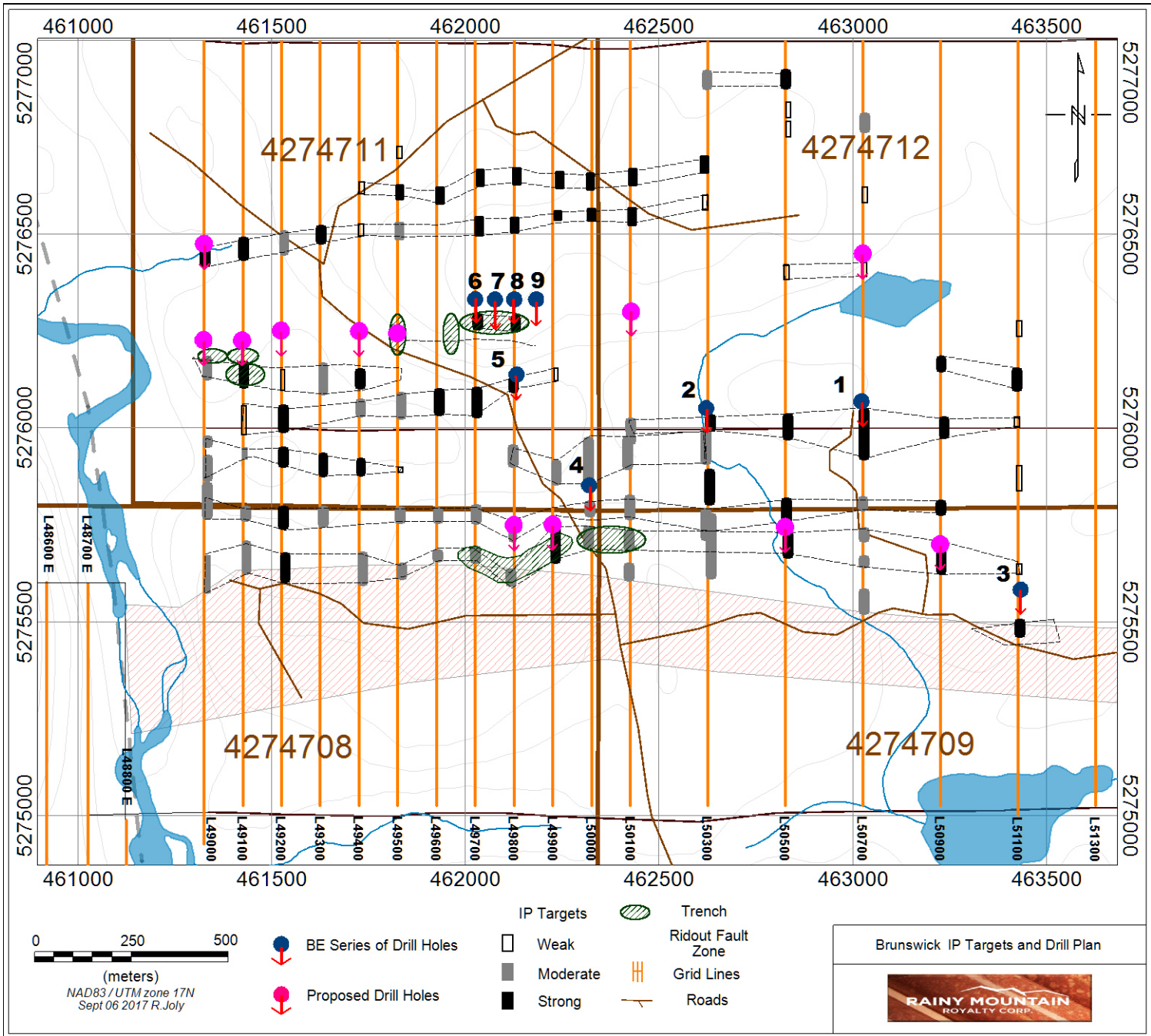
Page: Appendix 1  
 Total # Appendix Pages: 1  
 Finalized Date: 6-SEP-2017  
 Account: NMZ

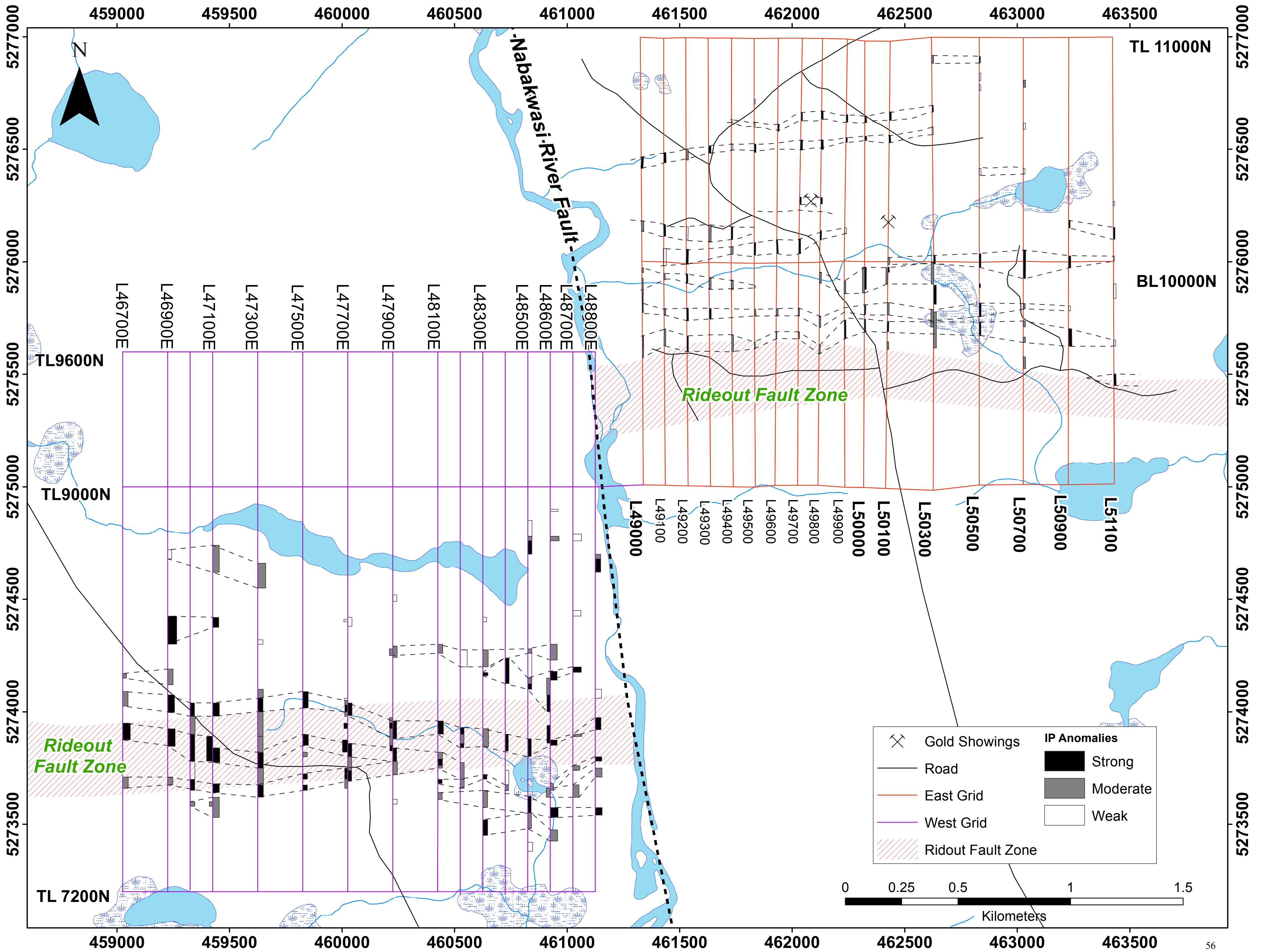
Project: BRUNSWICK

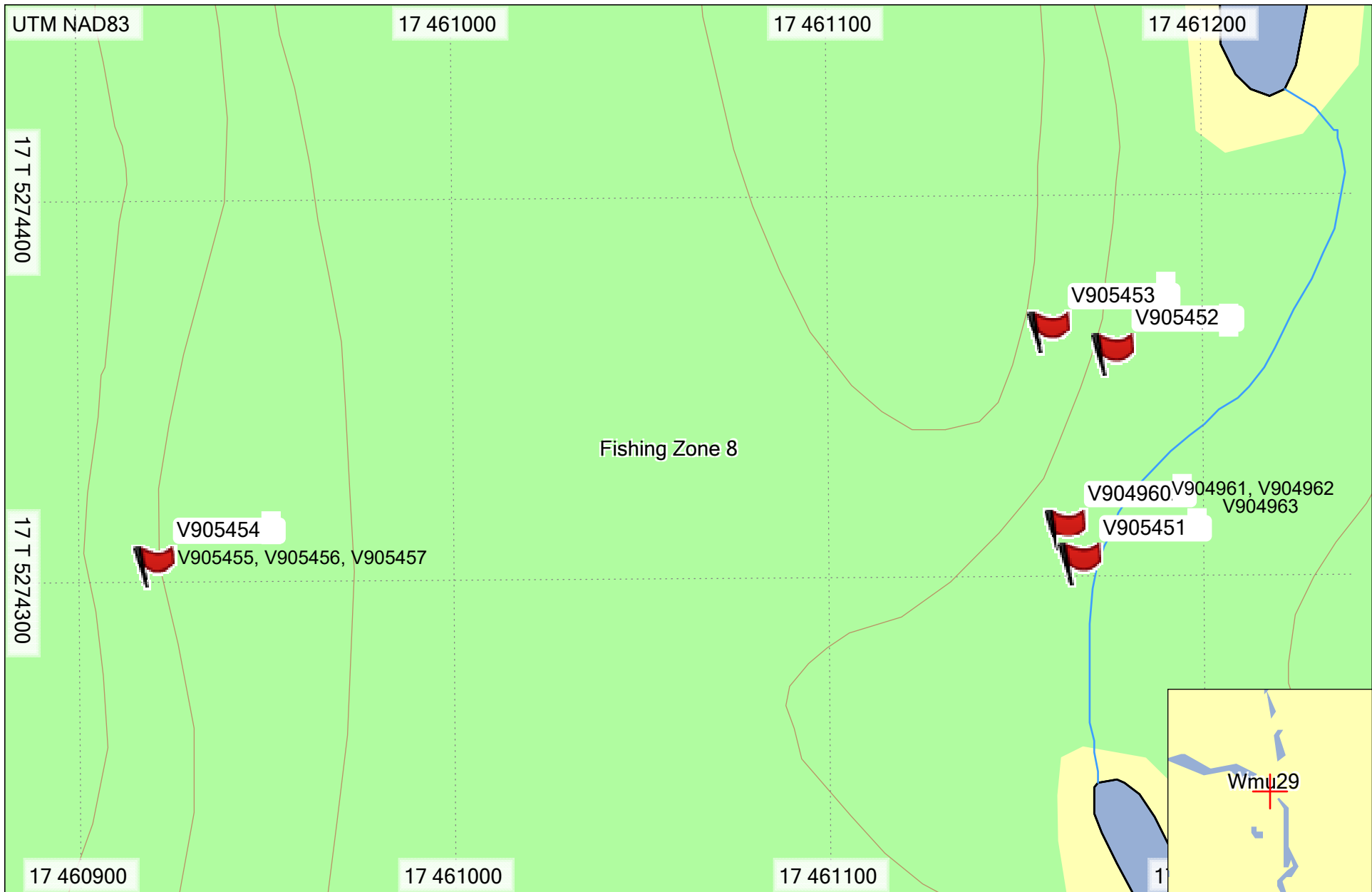
<b>CERTIFICATE OF ANALYSIS    TM17184224</b>
--

	<b>CERTIFICATE COMMENTS</b>												
	<b>ANALYTICAL COMMENTS</b>												
Applies to Method:	Gold determinations by this method are semi-quantitative due to the small sample weight used (0.5g). ME-MS41												
	<b>LABORATORY ADDRESSES</b>												
Applies to Method:	Processed at ALS Vancouver located at 2103 Dollarton Hwy, North Vancouver, BC, Canada. ME-MS41												
Applies to Method:	Processed at ALS Timmins located at Unit 10 - 2090 Riverside Drive, Timmins, ON, Canada.												
	<table style="width: 100%; border: none;"> <tr> <td style="width: 33%;">CRU-31</td> <td style="width: 33%;">CRU-QC</td> <td style="width: 33%;">LOG-22</td> <td style="width: 15%;"></td> <td style="width: 15%;"></td> <td style="width: 10%;"></td> </tr> <tr> <td>PUL-QC</td> <td>SPL-21</td> <td>WEI-21</td> <td></td> <td></td> <td>PUL-31</td> </tr> </table>	CRU-31	CRU-QC	LOG-22				PUL-QC	SPL-21	WEI-21			PUL-31
CRU-31	CRU-QC	LOG-22											
PUL-QC	SPL-21	WEI-21			PUL-31								





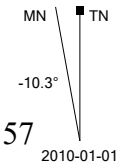
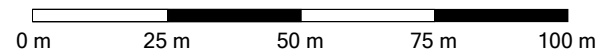


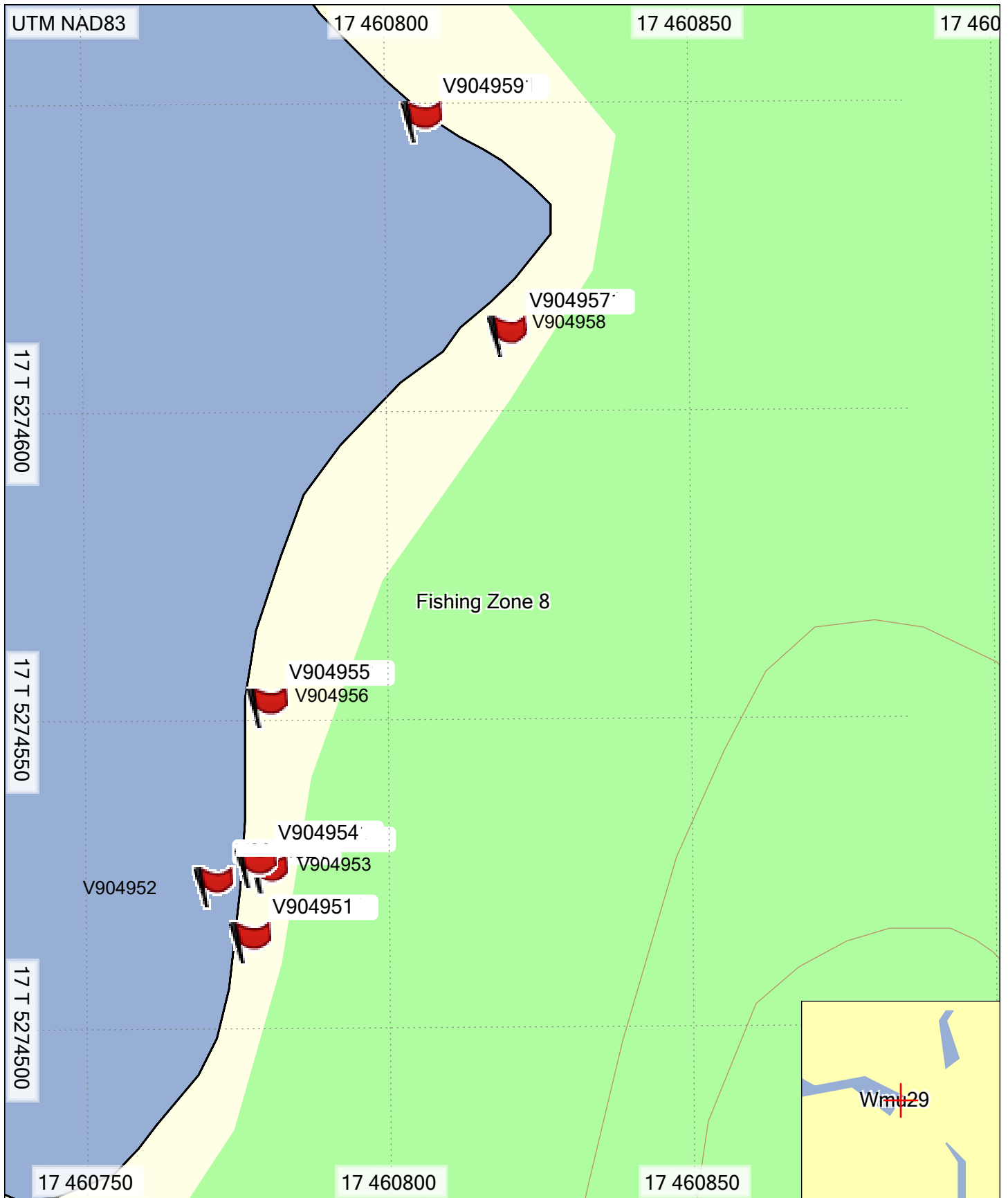


TrakMaps TOPO ON v4.0.0 [RTM]  
 Ministry of Natural Resources ON  
 Topo ON v4  
 TrakMaps

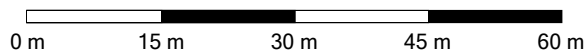
2017-11-27 3:25:22 PM

Prospecting Sample Map 1

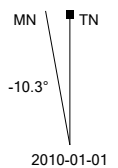




TrakMaps TOPO ON v4.0.0 [RTM]  
 Ministry of Natural Resources ON  
 Topo ON v4  
 TrakMaps

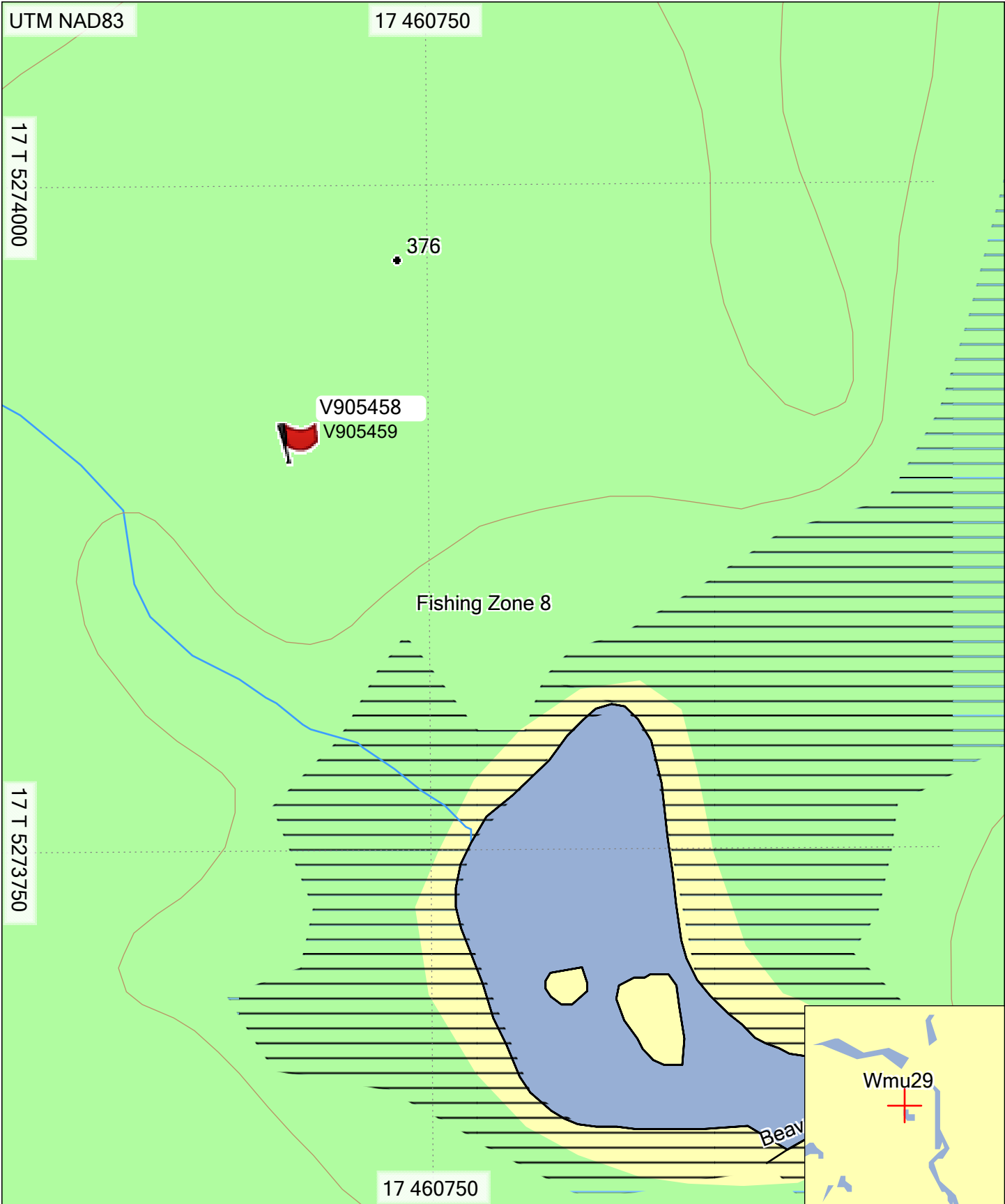


2017-11-27 3:25:22 PM



Prospecting Sample Map 2

**GARMIN** 58



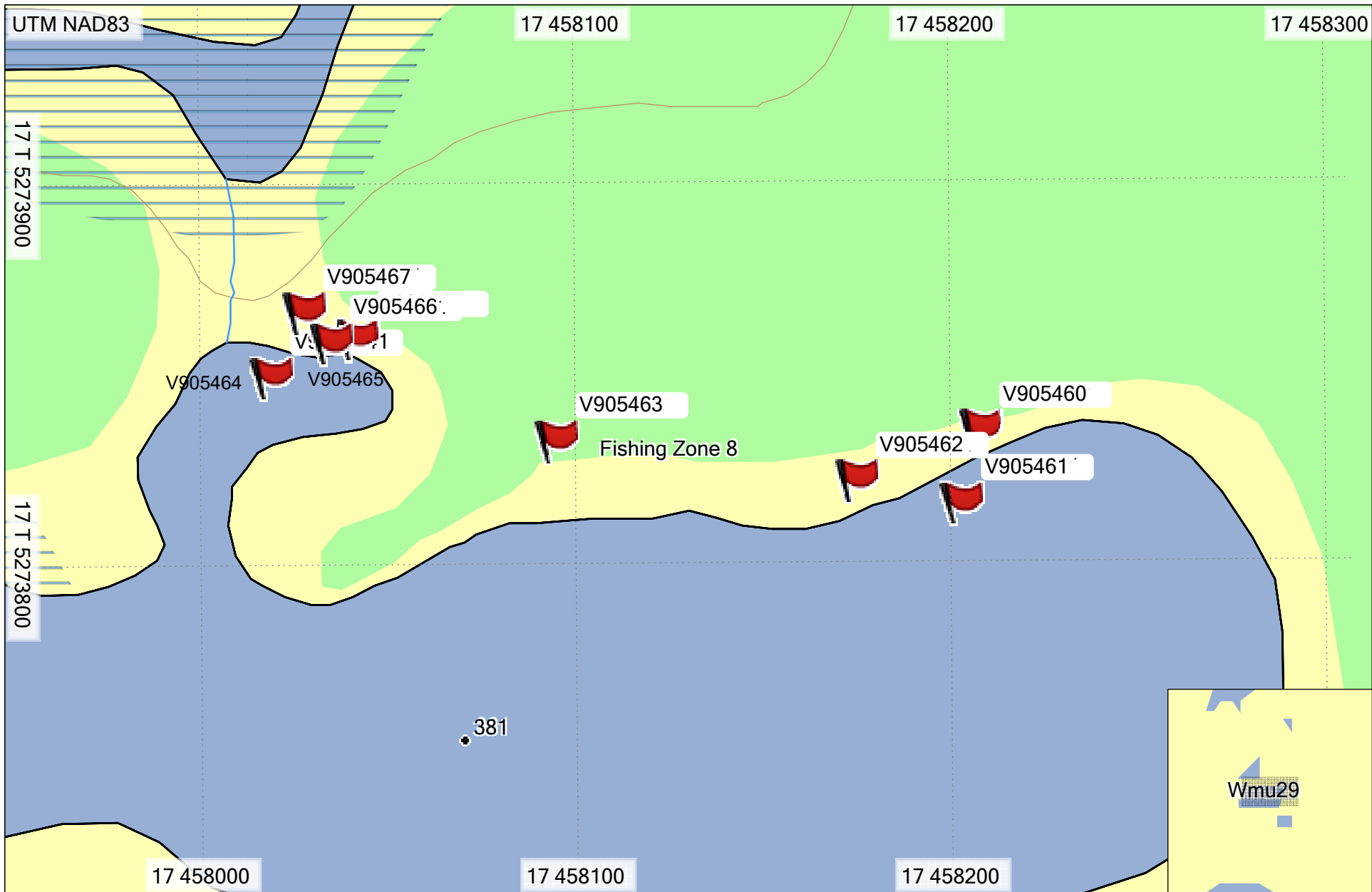
TrakMaps TOPO ON v4.0.0 [RTM]  
 Ministry of Natural Resources ON  
 Topo ON v4  
 TrakMaps

2017-11-27 3:25:22 PM

Prospecting Sampe Map 3

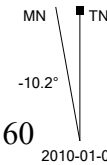
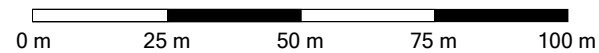


2010-01-01



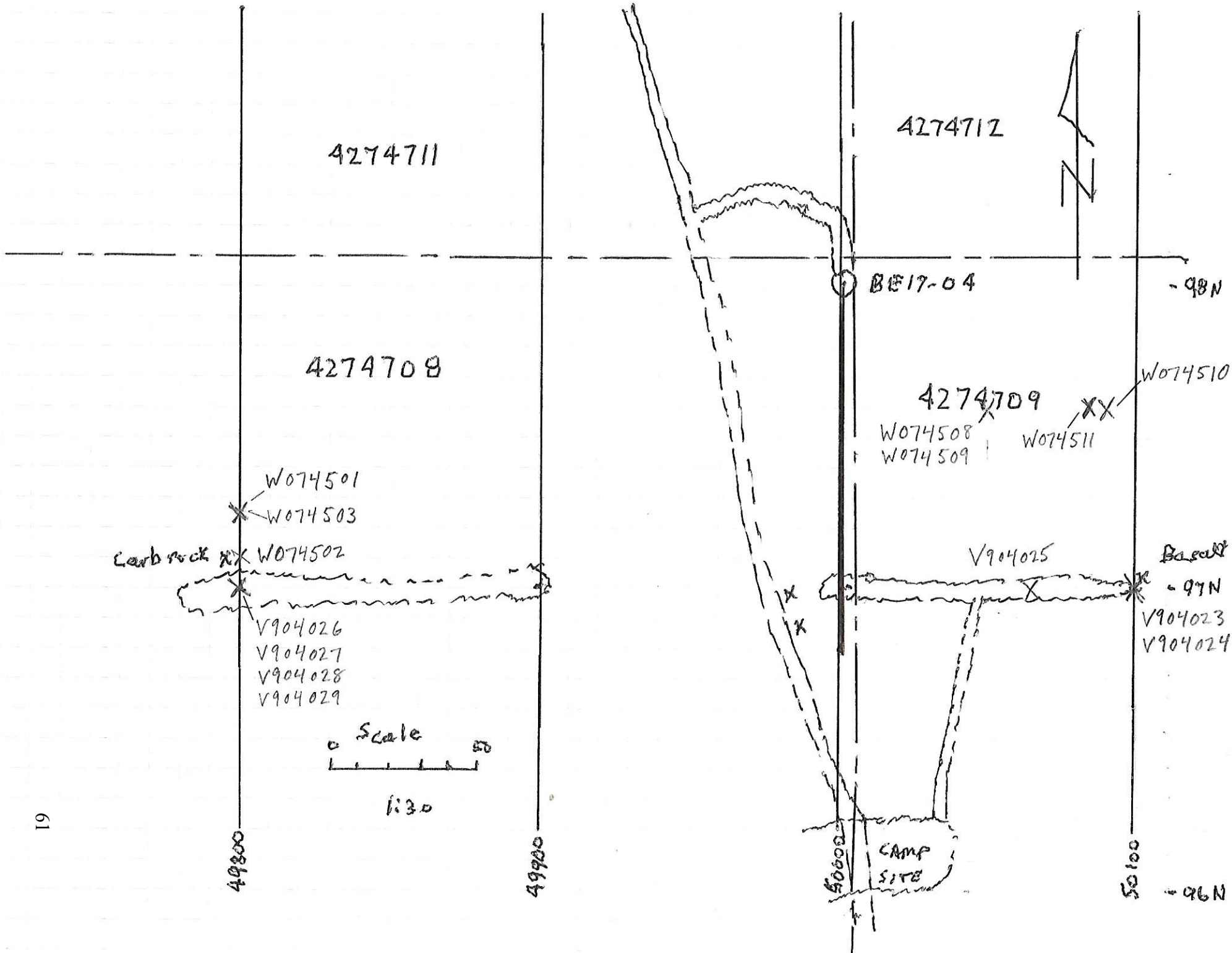
TrakMaps TOPO ON v4.0.0 [RTM]  
 Ministry of Natural Resources ON  
 Topo ON v4  
 TrakMaps

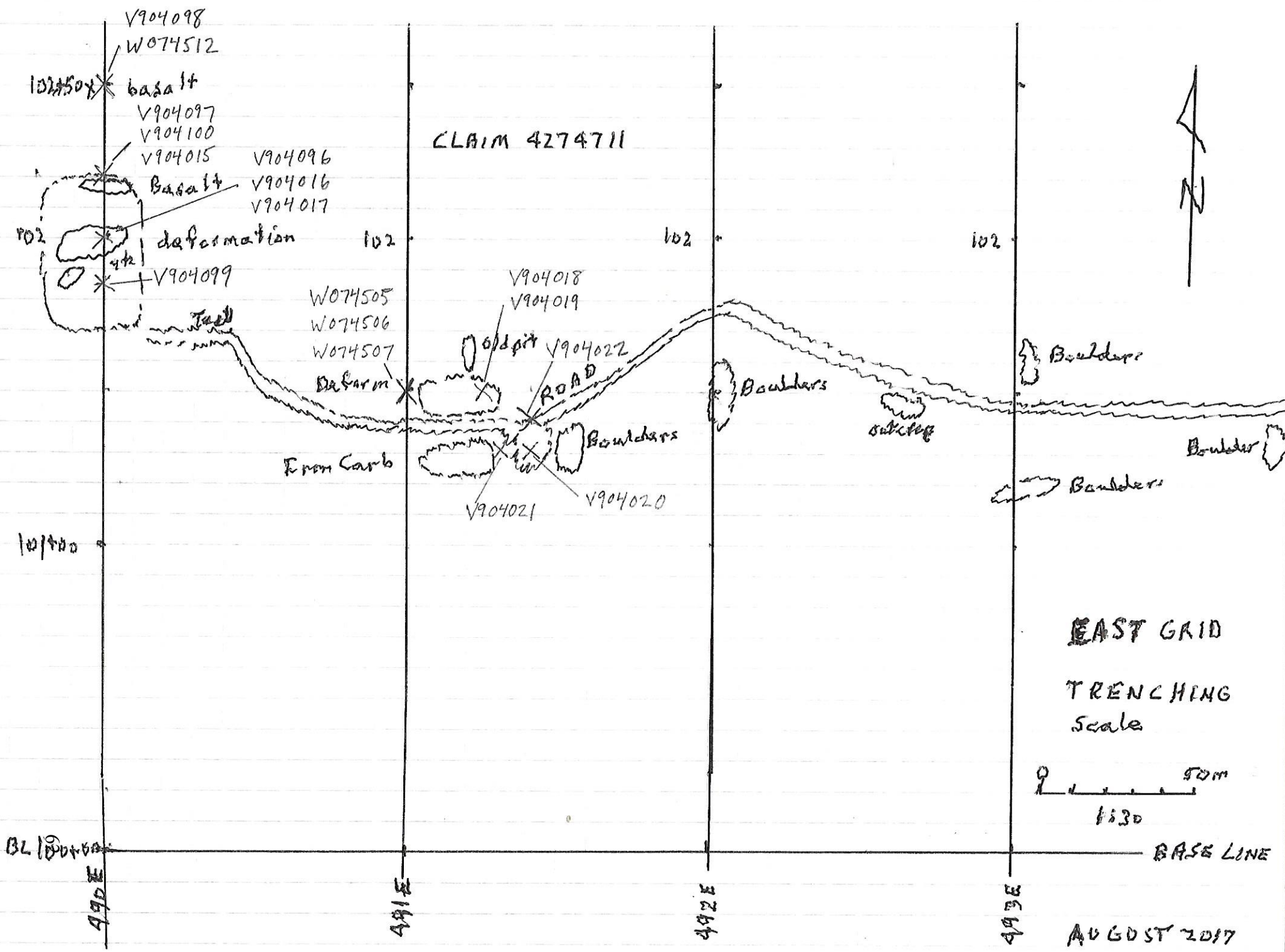
2017-11-27 3:25:22 PM



Prospecting Sampe Map 4









## Photos

Photo Number	Line	Sta	Remarks
1	491E	101+50N	Glen Coyne breaking rock
2	491E	101+25N	D Coyne washing
3	491E	101+50N	Looking south, deformation in foreground (see folding in next photos)
4, 5, 6, 7	491E	101+50N	deformation Zone folded Quartz
8	50050E	97+00N	
9	50050E	97+00N	
10	50100E	97+00N	







