

We are committed to providing [accessible customer service](#).  
If you need accessible formats or communications supports, please [contact us](#).

Nous tenons à améliorer [l'accessibilité des services à la clientèle](#).  
Si vous avez besoin de formats accessibles ou d'aide à la communication, veuillez [nous contacter](#).

**HOTSTONE PROSPECTING REPORT -  
ON CLAIMS -**

**4268775, 4268776, 4241740, 4270969, -  
1163944, 1163945, 1163946, AND -  
1206533. -**

**IN -**

**GREENLAW TWP. -**

**WRITTEN BY -**

**D. GIBSON -**

**Nov 5, 2017 -**

**This report will discuss the prospecting efforts performed by D. Gibson on mining claims 4268775, 4268776, 4241740, 4270969, 4280586, 1163944, 1163945, 1163946, and 1206533, during the period from September 10, 2017 to October 16, 2017 upon the mining claims held in Greenlaw Township, Porcupine Mining Division. The Mining Claims are held by David Lawrence Gibson.**

### **Schedule of Events**

**Sept 10 to Sept 13 – D. Gibson travel from Calgary to Kormak settlement near Sultan Ontario. Set up camp just outside of Kormak on Minnow Lake, 24 road km's south of the Hotstone Property.**

**Sept 14 - Travel to Hotstone property and accessed by ATV across Sylvanite creek on trail to Gertrude Lake. Discovered New logging road put in during the previous winter at north end of claim 4268775 and began prospecting cut trails.**

**Sept 15 - Returned to previous day's location to continue prospecting logging trails at north end of claim 4268775. Noted a number of mineralized altered shear zones and intermingled quartz veining. Samples collected #542001**

**Sept 16 - Travel to previous day's location northern region of claim 4268775. Rain, unable to traverse field.**

**Sept 17 - Travel to north end of claim 4268775. Water too high and unable to cross Sylvanite Creek. Too wet to traverse in bush.**

**Sept 18 – Travel to middle of claim 1163944 to prospect high grade pits. Sample taken. Sample collected #542002**

**Sept 19 and Sept 20 - Heavy rain. Creek once again too high to cross with ATV and unable to traverse in the bush. Too Wet.**

**Sept 21 – Spent day accessing by water from Hotstone Lake through the Wakami River to Little Rideout Lake and on into the western end of Rideout Lake on claim 4268776. Traverse central and western portions of claim 4268776 from Rideout Lake. Sample collected # 542003**

**Sept 22 – Rain. Traveled to the field. Too wet to traverse.**

**Sept 23 – Prospected high grade pits in claim 1163944. Sample collected #542004**

**Sept 24 and Sept 25- Travelled to Hotstone Property From Camp. Too hot and muggy to work both days. 31 degrees on Sept 24, 37 with the Humidex. 29 degrees on Sept 25, 35 degrees with the Humidex.**

**Sept 26 to and including Sept 29 – Heavy rain, drove to the property each day. Too wet to traverse in the field.**

**Sept 30 - Prospected high grade pits and old showings in the eastern portion of claim 1163944. Sample Collected #542005, 542009 and 542010.**

**Oct 1 to and including Oct 3 - Took a break, due to weather. Visited Friends and family in Timmins and North Bay.**

**Oct 4 to and including Oct 5 - Travelled across Sylvanite creek to prospect logging trails established the previous winter in the northern portion of claim 4268775. Collected, #542006, 542007, and Oct 6 – Travelled across Sylvanite creek to prospect logging trails established the previous winter in the northern portion of claim 4268775. Sample collected 542008. Travelled to Timmins after field day to drop off samples at end of day at ActLabs 24 hour drop off service.**

**Oct 7 and Oct 8 - Heavy rain, Travelled to property. Too wet to traverse in the field.**

**Oct 9 and Oct 10 – Prospected High Grade pits in central portion of claim 1163944. No Samples Collected.**

**Oct 11 to Oct 13 – Took a break and left field due to rain.**

**Oct 14 – Travelled across Sylvanite creek to prospect logging trails established the previous winter in the northern portion of claim 4268775. No Samples Collected.**

**Oct. 15 – Snow. Travelled to the property. Much too wet to traverse.**

**Oct. 16 – Travelled to Hotstone Property, bush still too wet to traverse. Packed up Camp and left Minnow Lake to travel to South River to spend time with Friends and Family.**

**Oct 25 – Began Trip Back to Calgary.**

## **Personnel**

D. Gibson was involved in performing the prospecting on the Hotstone Property claims during the September and October 2017 prospecting programs.

## **Property**

The Hotstone mining claims 4268775, 4268776, 4241740, 1163944, 1163945, 1163946, 4270969, 4280586 and 1206533 are located approximately 65 km south-east of the town of Chapleau, Ontario, within the central portion of Greenlaw Township, Sudbury District, Porcupine Mining division.

## **Access**

Access to the property was by way of highway 129 south from Chapleau, Ontario to the Sultan Highway turnoff onto Highway 667. Proceed east along highway 667 from the intersection of Highway 129 for approximately 15km to the Kormak Road turnoff. Then proceed north along the Kormak road, past the train access and settlement of Kormak for approximately 25 km to a small gravel road leading east approximately 7km in toward Hotstone Lake.

## **Discussions**

The prospecting program on the Hotstone property was performed in a number of phases due to the extreme field conditions of heavy rain and at times extreme heat. See Timeline for details.

From the prospecting of the new logging trails and accesses, within claim 4268775, created by the logging operations during the winter of 2017, and number of alteration and shear zones were identified. The purpose of prospecting this area was to identify and trace out extensions of the known Rideout Lake Shear zone. This passes through the northern portion of 4268776. Samples were collected from the most mineralized looking zones to determine new areas of gold enrichment.

The high grade pits and zones within claim 1163944 were also examined during this prospecting period to determine additional extents of the known gold mineralizations.

## **Sample Descriptions**

A total of 10 samples were collected during the Hotstone Property prospecting program conducted in September and October of 2017. All the samples were assayed for gold using a fire assay with a AA finish with Gravimetric over 5gr. See assay certificate for results.

The following is a brief description of the individual samples collected within the Hotstone property.

Sample 452001 was of a chip sample of sheared Mafic to Ultra-mafic looking material containing minor sulfides and carbonate alteration. Found in the northern portion of claim 4268775 along the newly established logging trails. The sample was taken from an exposed large outcropping of mafic to ultramafic looking shear zone trending east-west.

Sample 452002 was a chip sample of quartz-carbonate alteration with fuchsite and minor amounts of sulfides. The sample was collected from within a large east-west trending alteration shear zone that spans over 1000m within the Hotstone Property, located in the central portion of claim 1163945.

Sample 452003 was a grab sample of sheared alteration material consisting of quartz with minor sulfides, found in outcrop in the central portion of claim 4268776, south of the shoreline in the western end of Rideout Lake.

Sample 452004 was a chip sample of quartz vein material having minor amounts of pyrite and chalcopyrite. The sample was collected from within the large east-west trending alteration shear zone on claim 1163945.

Sample 452005 was a chip sample of quartz-carbonate-fuchsite material with minor sulfide mineralization. The sample was collected from eastern portion of claim 1163944 within the larger east-west trending altered shear zone.

Sample 452006 was a chip sample of quartz material with pyrite and chalcopyrite, taken from a small quartz vein found in an outcrop in the northern portion of claim 4268775.

Sample 452007 was quartz-material within outcrop, well mineralized with sulfides, containing pyrite and chalcopyrite, found in the north-central portion of claim 4268775 along the newly established logging trails.

Samples 452008 were chip samples of quartz rock containing carbonate and extensive sulfide mineralization of pyrite and chalcopyrite. The sample was collected from outcrop exposed by the logging operations in the northern portion of 4268775.

Samples 452009 and 452010 were chip samples of quartz carbonate mineralization. The samples were taken from a large 80cm quartz vein found within the old pit, located in old workings within the large east-west trending shear zone in the central portion of claim 1163944.

See assay certificates for results.

### **Findings and Conclusion**

The samples collected during the Hotstone Prospecting program provided valuable information on the presence of gold within the discovered extension of the Rideout Lake shear zone in claims 4268775 and 4268776 as well as the known high grade pits in claim 1163944.

Two noted samples 452003 and 452006 that were collected in the extension of the Rideout Lake shear zone had very encouraging numbers.

Sample 452003 returned an assay of 246ppb's gold. This is encouraging given the newly discovered extent of the Rideout Lake Alteration zone exposed by the current logging operations.

Sample 452006 was even more encouraging, showing just of ½ a gram or 596ppb's gold within the Rideout Lake Shear zone in the northern portion of claim 4268776.

Samples 452009 and 452010 returned very typical gold assays found within the high grade pits along the quartz-carbonate-fuchsite alteration zone within the central portion of claim 1163944. The assays of 7.69 grams and 1.03 grams gold per ton show that the mineralization extends out beyond the pits along the peripheries previously not sampled.

The following are recommendations for future work on the Hotstone Property.

Firstly a follow up is recommended in the form of additional sampling of the high-grade areas, found on claims 1163944. The old workings, identified from the September-October prospecting campaign, demonstrate a previously un-sampled gold enrichment

of the high-grade pits and detailed sampling is recommended to determine the homogeneous nature or nugget effect of the gold mineralization.

Secondly, additional prospecting and sampling of the numerous alterations/shear zones and small quartz veins discovered in the northern portion of claim 4268775, exposed by the new logging operations is warranted. The minor assays returned show the presence of gold within the system of the traced extent of the Rideout Lake Shear zone.

Overall the September and October Hotstone prospecting program proved to be quite successful, given the numerous situations and persistent rain encountered..

### **Listing of Expenditure**

D. Gibson Travel from Manitoba Border to Minnow Lake, Kormak Ontario	
Oct 10-13, 2017, 1460 km one way, at \$.50/km	\$730.00
D. Gibson return Travel from Manitoba Border to Minnow Lake, Kormak Ontario, Oct 25, 2017, 1460 km one way, at \$.50/km	\$730.00
D. Gibson Travel from Minnow Lake, Kormak Ontario to Hotstone Property	
Sept 14 to Sept 30 incl., 32 km one way,64km return at \$.50/km	\$544.00
D. Gibson Travel from Minnow Lake, Kormak Ontario to Hotstone Property	
Oct 4 to Oct 10 incl., 32 km one way,64km return at \$.50/km	\$224.00
D. Gibson Travel from Minnow Lake, Kormak Ontario to Hotstone Property	
Oct 14 to Oct 16 incl., 32 km one way,64km return at \$.50/km	\$96.00
D. Gibson Prospecting Days from Sept 14 to Sept 30 incl.	
17 days at \$250/day	\$4,250.00
D. Gibson Prospecting Days from Oct 4 to Oct 10 Incl.	
7 Days at \$250/day	\$1750.00
D. Gibson Prospecting Days from Oct 14 to Oct 16 Incl.	
3 Days at \$250/day	\$750.00
Assays, 10 samples for gold ActLabs of Timmins, Ontario	\$193.73



Substance for meals, propane, field supplies for September-October	
Hotstone Prospecting programs, \$50/day/man for 27days	\$1350.00
D. Gibson mapping and report writing, 2 days at \$750/day	<u>\$1500.00</u>
Total Expenditures	\$12,117.73

**Appendix**

- Hotstone Prospecting Map Sept-Oct 2017
- Google Map of Camp and Hotstone Property
- Hotstone Group Claim Map
- Assay Certificates and invoice



**Date Submitted:** 06-Oct-17  
**Invoice No.:** A17-11051  
**Invoice Date:** 17-Oct-17  
**Your Reference:**

**Dave Gibson**  
**2945 Kingsview Blvd SE**  
**PO Box 10144**  
**Airdrie AB**

**ATTN: Dave Gibson**

## CERTIFICATE OF ANALYSIS

10 Rock samples were submitted for analysis.

The following analytical package(s) were requested:

Code 1A2-Timmins (10g/m t) Au - Fire Assay AA

REPORT **A17-11051**

This report may be reproduced without our consent. If only selected portions of the report are reproduced, permission must be obtained. If no instructions were given at time of sample submittal regarding excess material, it will be discarded within 90 days of this report. Our liability is limited solely to the analytical cost of these analyses. Test results are representative only of material submitted for analysis.

Notes:

If value exceeds upper limit we recommend reassay by fire assay gravimetric-Code 1A3.

CERTIFIED BY:

A handwritten signature in black ink, appearing to be "Emmanuel Esemé". The signature is written in a cursive, somewhat stylized font.

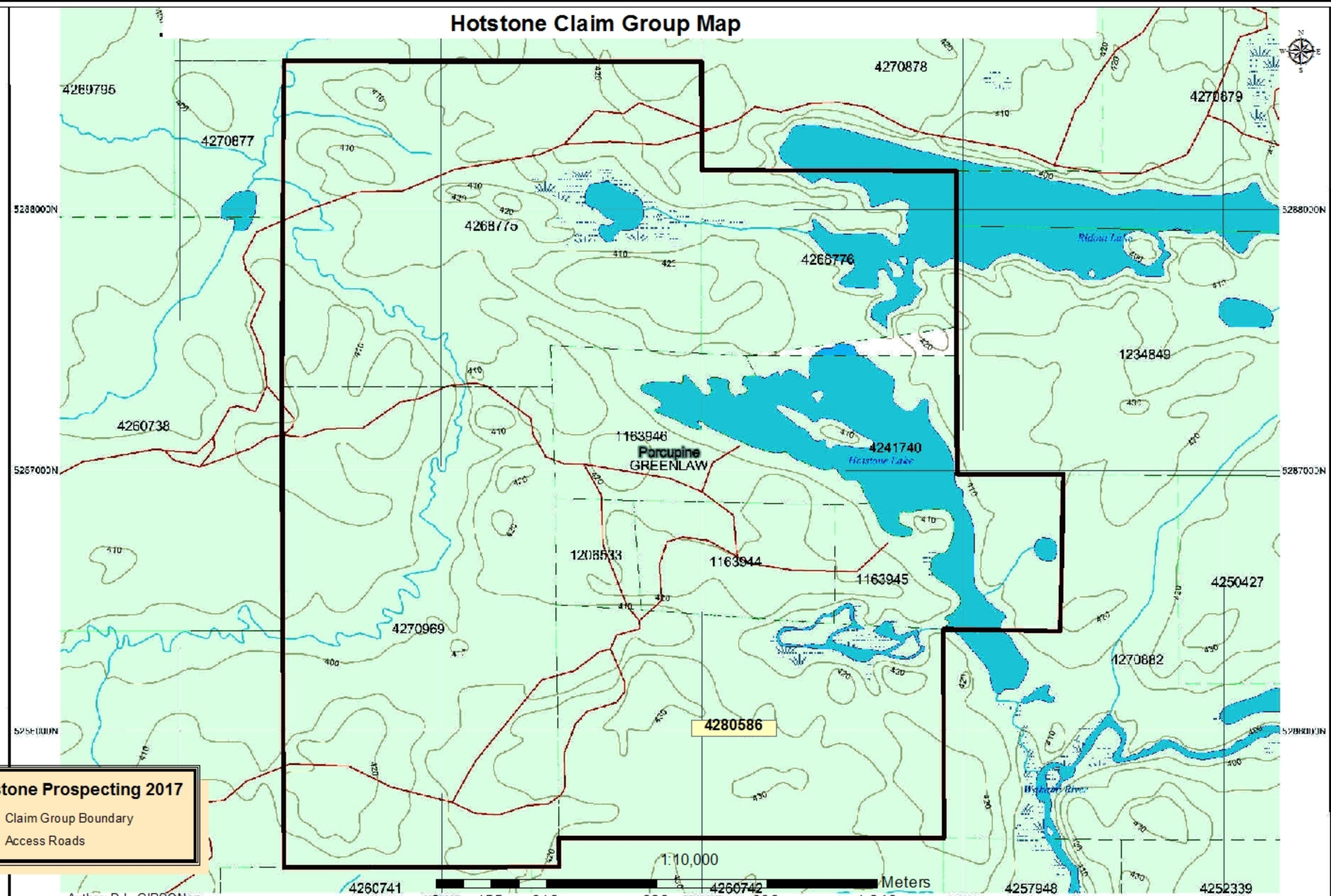
Emmanuel Esemé, Ph.D.  
Quality Control

**ACTIVATION LABORATORIES LTD.**  
1752 Riverside Drive, Timmins, Ontario, Canada, P4R 1N1  
TELEPHONE +705 264-0123 or +1.888.228.5227 FAX +1.905.648.9613  
E-MAIL Timmins@actlabs.com ACTLABS GROUP WEBSITE www.actlabs.com

Analyte Symbol	Au	Au
Unit Symbol	g/mt	g/tonne
Lower Limit	0.005	0.03
Method Code	FA-AA	FA- GRA
542001	0.015	
542002	0.013	
542003	0.596	
542004	0.015	
542005	0.088	
542006	0.246	
542007	0.052	
542008	0.056	
542009	6.94	7.69
542010	1.03	

Analyte Symbol	Au	Au
Unit Symbol	g/mt	g/tonne
Lower Limit	0.005	0.03
Method Code	FA-AA	FA- GRA
OxN117 Meas		7.56
OxN117 Cert		7.679
OxP116 Meas		15.0
OxP116 Cert		14.92
OREAS 218 Meas	0.522	
OREAS 218 Cert	0.531	
OREAS 218 Meas	0.522	
OREAS 218 Cert	0.531	
OREAS 224 Meas	2.07	
OREAS 224 Cert	2.150	
OREAS 224 Meas	2.10	
OREAS 224 Cert	2.150	
542005 Orig	0.088	
542005 Split PREP DUP	0.058	
542005 Orig	0.090	
542005 Split PREP DUP	0.060	
542010 Orig	1.02	
542010 Dup	1.05	
542010 Orig	0.969	
542010 Dup	1.02	
Method Blank	0.005	
Method Blank	< 0.005	
Method Blank	< 0.005	
Method Blank	< 0.005	
Method Blank		< 0.03
Method Blank		< 0.03

# Hotstone Claim Group Map



**Hotstone Prospecting 2017**

- Claim Group Boundary
- Access Roads

Author: D. L. GIBSON

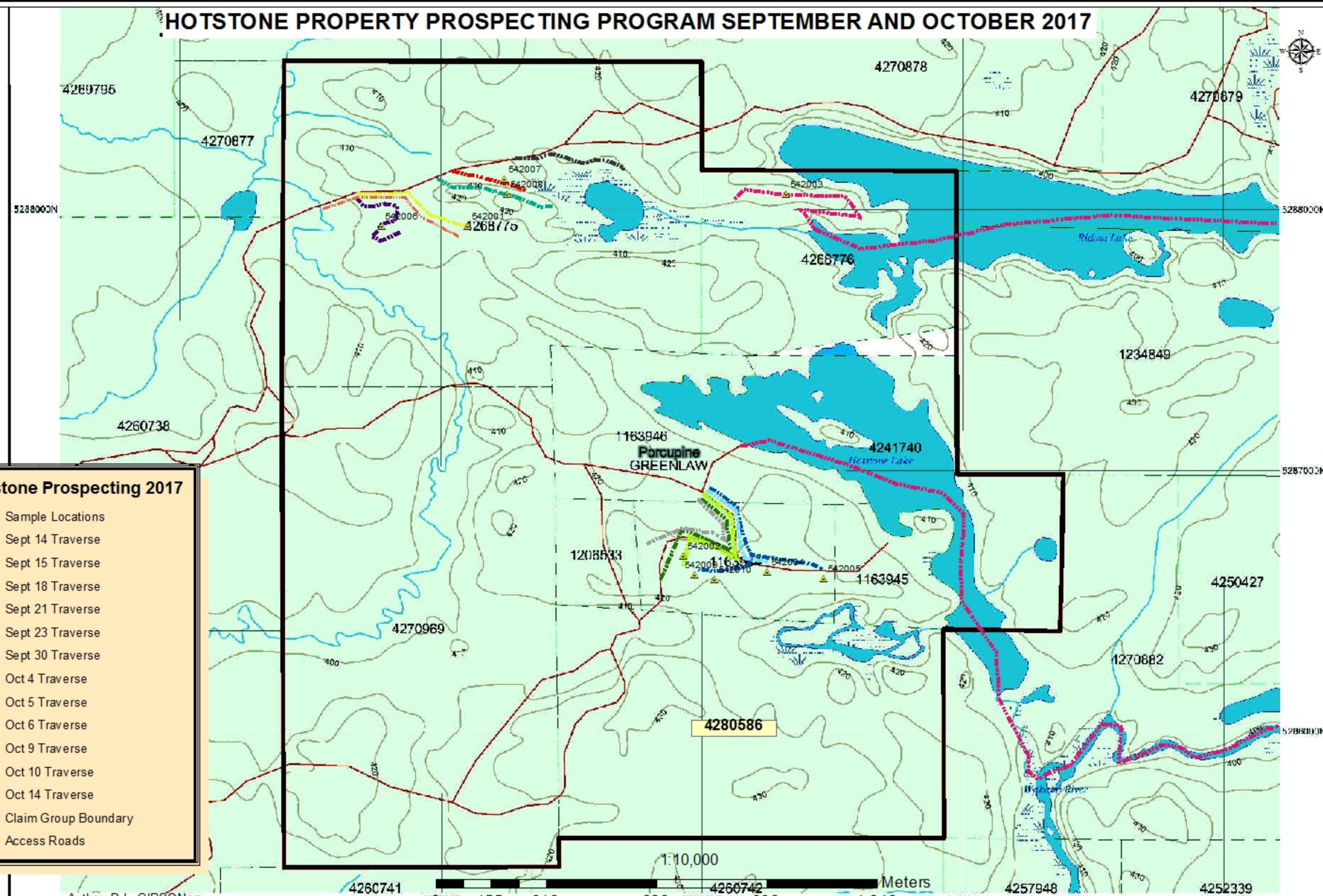
UTM Zone 17  
1000m grid

4260741 155 310 620 930 1,240 4257948 4252339

# HOTSTONE PROPERTY PROSPECTING PROGRAM SEPTEMBER AND OCTOBER 2017

**Hotstone Prospecting 2017**

-  Sample Locations
-  Sept 14 Traverse
-  Sept 15 Traverse
-  Sept 18 Traverse
-  Sept 21 Traverse
-  Sept 23 Traverse
-  Sept 30 Traverse
-  Oct 4 Traverse
-  Oct 5 Traverse
-  Oct 6 Traverse
-  Oct 9 Traverse
-  Oct 10 Traverse
-  Oct 14 Traverse
-  Claim Group Boundary
-  Access Roads



Author: D.L. GIBSON

UTM Zone 17  
1000m grid