

We are committed to providing [accessible customer service](#).
If you need accessible formats or communications supports, please [contact us](#).

Nous tenons à améliorer [l'accessibilité des services à la clientèle](#).
Si vous avez besoin de formats accessibles ou d'aide à la communication, veuillez [nous contacter](#).

Technical Report for Lackner Township Mining Claim No.: 4283255

This mining claim is situated approximately 30 km from Chapleau Ontario. The claim is accessed from a southern heading logging road approximately 22 km from Chapleau going east on Hwy 101. This logging road represent a second access to the Lackner Carbonatite complex and reaches the complex from the east side. The distance from the Hwy 101 to the complex is about 10 kms. In recent years, this road has not been heavily traveled and it is often necessary to clear fallen trees and remove protruding rocks not to damage vehicles. As we get closer to the complex and the location at which we normally camp, the road becomes narrower with overgrown trees.

June 24, 2016 to June 26, 2016

The exploration was done with my son Eric Labelle, and myself, Maurice Labelle. For this claim's assessment work, we were at the property on two occasions of three days each. The first occasion was during the period from June 24, 2016 to June 26, 2016. Our first objective was to get back to a clearing that we spotted while staking in May 2015. In the 80s, Ron Sage of the MNM had travelled a bush road that for years, we had been trying to locate. We were able to use the ATV only for a small distance. The trees were too dense to continue driving. By foot, we returned to this clearing and after a short walk in the western direction, was able to determine that this was indeed the old road. During these three days, we continued to place line tape and identify the road all the way into patent number S58587 that we also own. Using GPS tracking we were able to map this road. We also came across two outcrops of which we took two samples; identified as Claim Sample 1 and Claim Sample 2 on the GPS map. We will be bringing those samples to Geolabs in Sudbury for analysis after figuring out a little more clearly, the elements for which they should be analysed. Ed VanHees, Resident Geologist and Pierre Bousquet, Regional Geologist, both in Timmins, have been consulted as to the most beneficial methods of analysing Rare Earth Elements samples.

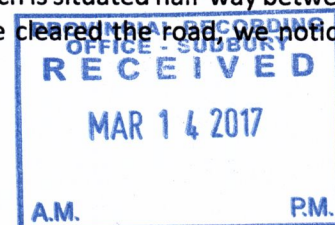
Our next objective became to locate the east extension of this road and assess the accessibility. Many sections have now become completely overgrown with dense bush. We were able to follow the road all the way back to a beaver dam located about 500 ft from where we normally camp with the Camper Van. Again, this was only possible by walking through sections of dense bush.

The rest of the time was used looking at maps and trying to figure out the next steps. Naturally, better access, and especially the ability to use ATV and Argo was determined as being imperative to the continuation of this project. Walking is extremely difficult in this very uneven terrain.

July 19, 2016 to July 21, 2016

We returned to the site, and camped again at the very same location on July 19, 2016 to July 21, 2016. During this period, Eric and I basically cleared small trees from the existing road... the road situated at the bottom of the east side of the complex. The temperature was extremely hot during the day and the bugs were at their best. The progress was not as fruitful as desired. These little trees that overtake roads do not cut well with chainsaws. It is evident that the roads are a priority if any significant headway is to be made.

This road was part of roads made to battle a forest fire in 1999. During that forest fire, the fire went all around the Carbonatite complex, then extended towards Borden Lake, which is situated half-way between the Lackner Carbonatite complex and the town of Chapleau, ON. As we cleared the road, we noticed many samples of biotite... which are typical of Carbonatites.

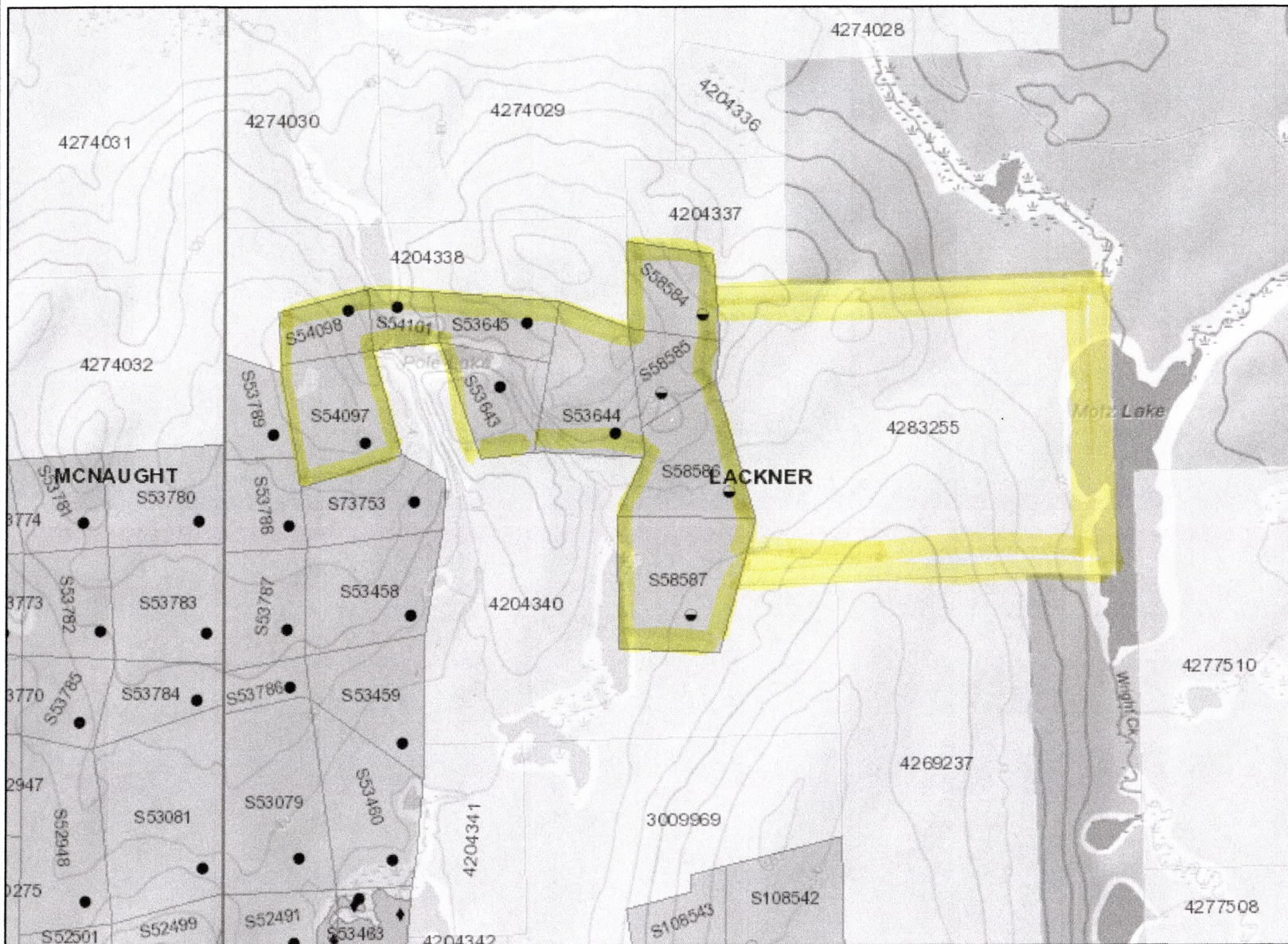




Labelle Mining Property

Notes:

Includes patents S54097, S54098, S54101, S53645, S53643, S53644, S58584, S58585, S58586, S58587 and mining claim 4283255.



Legend

Administration Boundaries

- Mining Divisions
- Resident Geologist District
- Townships and Areas
- UTM Grid
- Geographic Lot Fabric
- Other Federal Land

Mineral Tenure Grid

- OMTG Tenure Grid

Alienations

- Withdrawal
- Notice

Unpatented Claim

- Active
- Reconciled
- Pending

Disposition

- Disposition

Disposition Symbols

- Camp
- Disposition Unknown/Pending
- Freehold Patent Mining Rights Only
- Freehold Patent Surface Rights Only
- Freehold Patent Surface and Mining Rights
- Land Use Permit
- Leasehold Patent Mining Rights Only
- Leasehold Patent Surface Rights Only
- Leasehold Patent Surface and Mining Rights
- License of Occupation Mining Use Only
- License of Occupation Surface Use Only
- License of Occupation Surface and Mining Rights
- License of Occupation Uses Not Specified
- Order in Council
- Tower
- WPLA

Geology Layers

- AMIS Sites
- AMIS Features
- Drill Holes
- Mineral Occurrences



Projection: Web Mercator

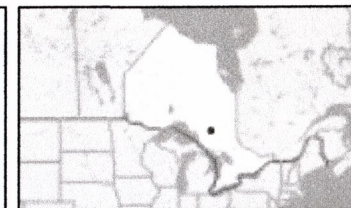


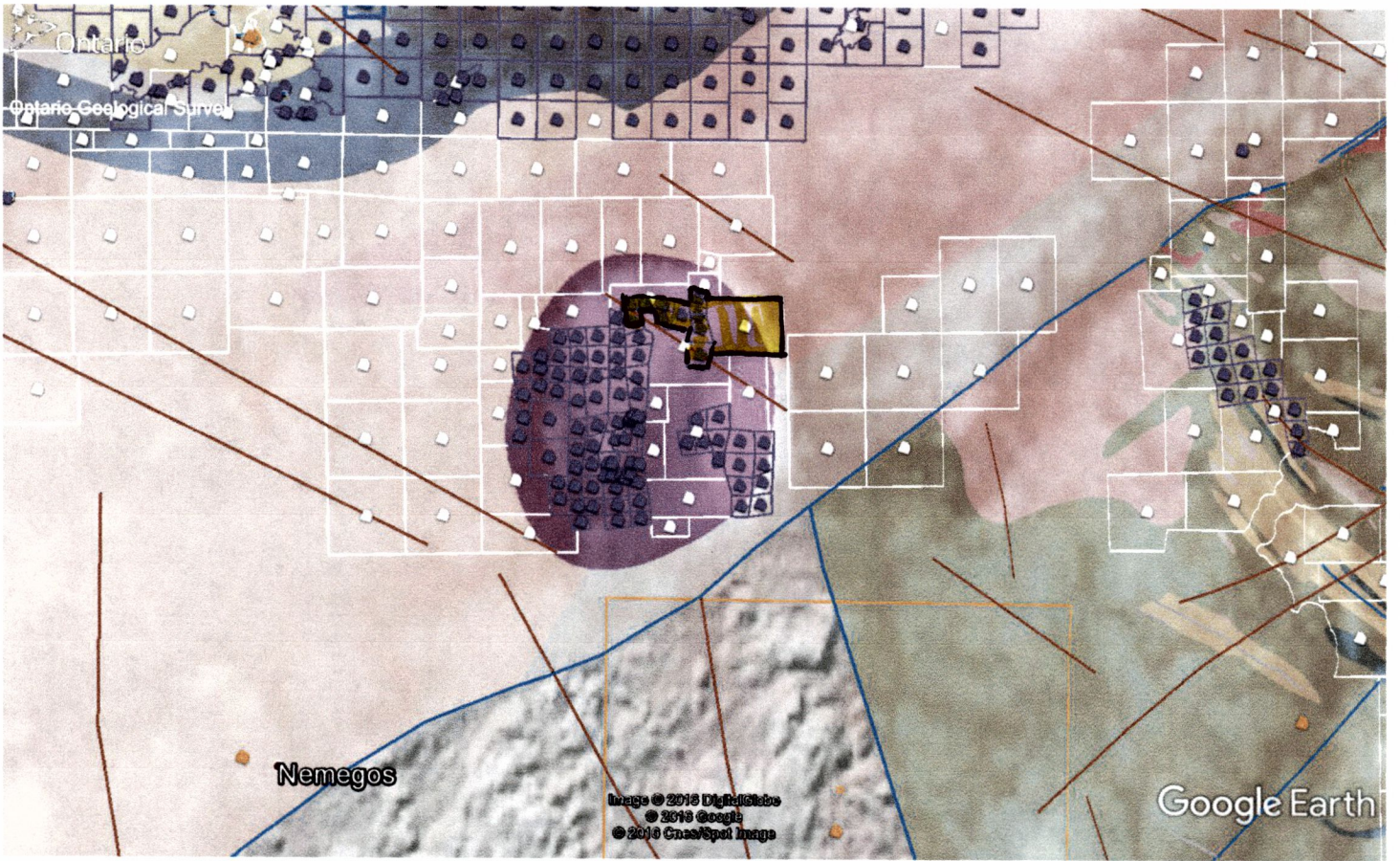
The Ontario Ministry of Northern Development and Mines shall not be liable in any way for the use of, or reliance upon, this map or any information on this map. This map should not be used for: navigation, a plan of survey, routes, nor locations.

© Queen's Printer for Ontario, 2016

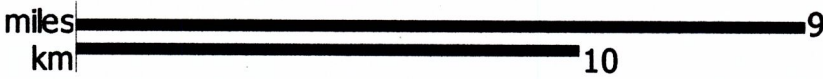
Imagery Copyright Notices: Ontario Ministry of Natural Resources and Forestry; NASA Landsat Program; First Base Solutions Inc.; Aéro-Photo (1961) Inc.; DigitalGlobe Inc.; U.S. Geological Survey.

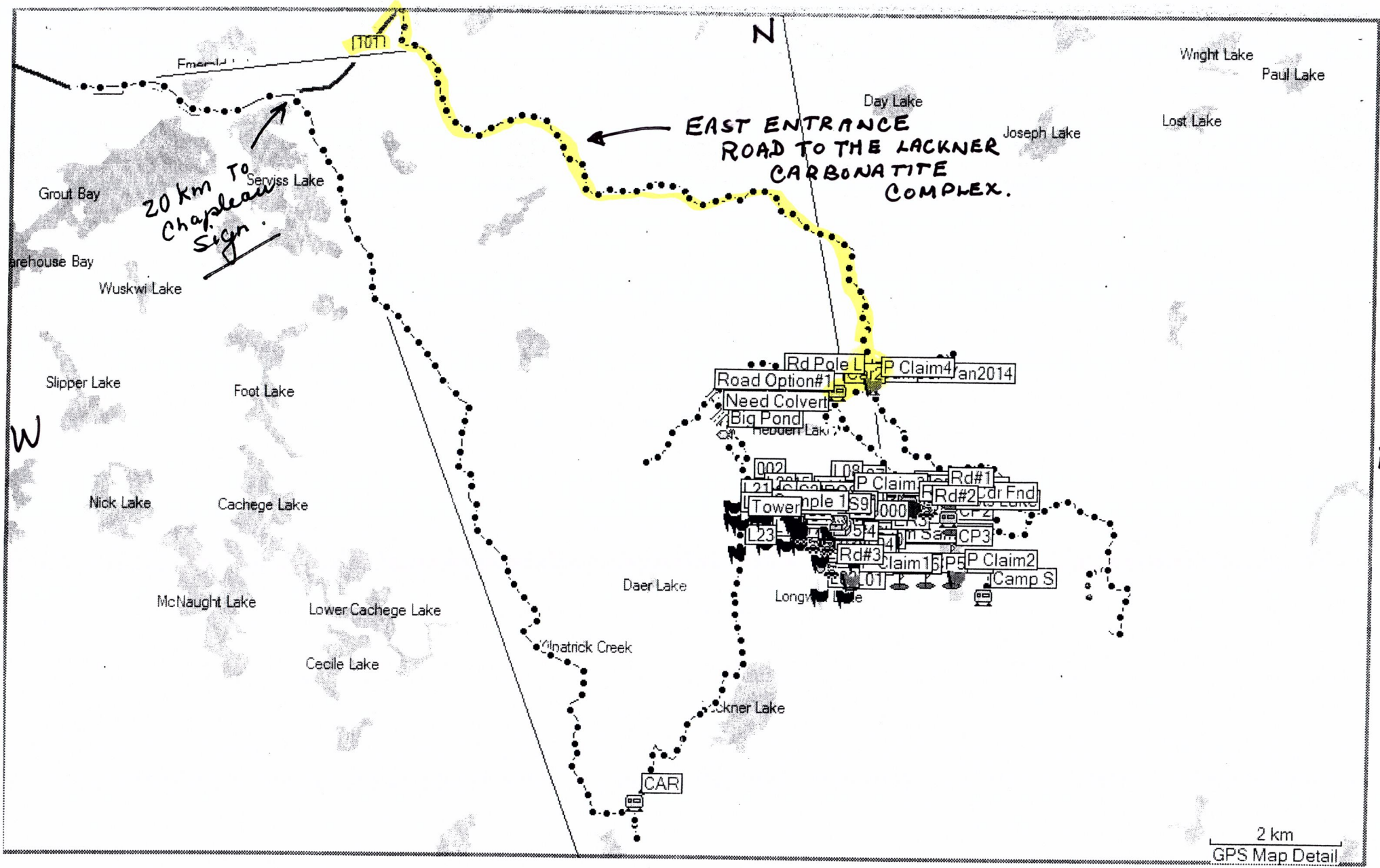
© Copyright for Ontario Parcel data is held by Queen's Printer for Ontario and its licensors and may not be reproduced without permission.

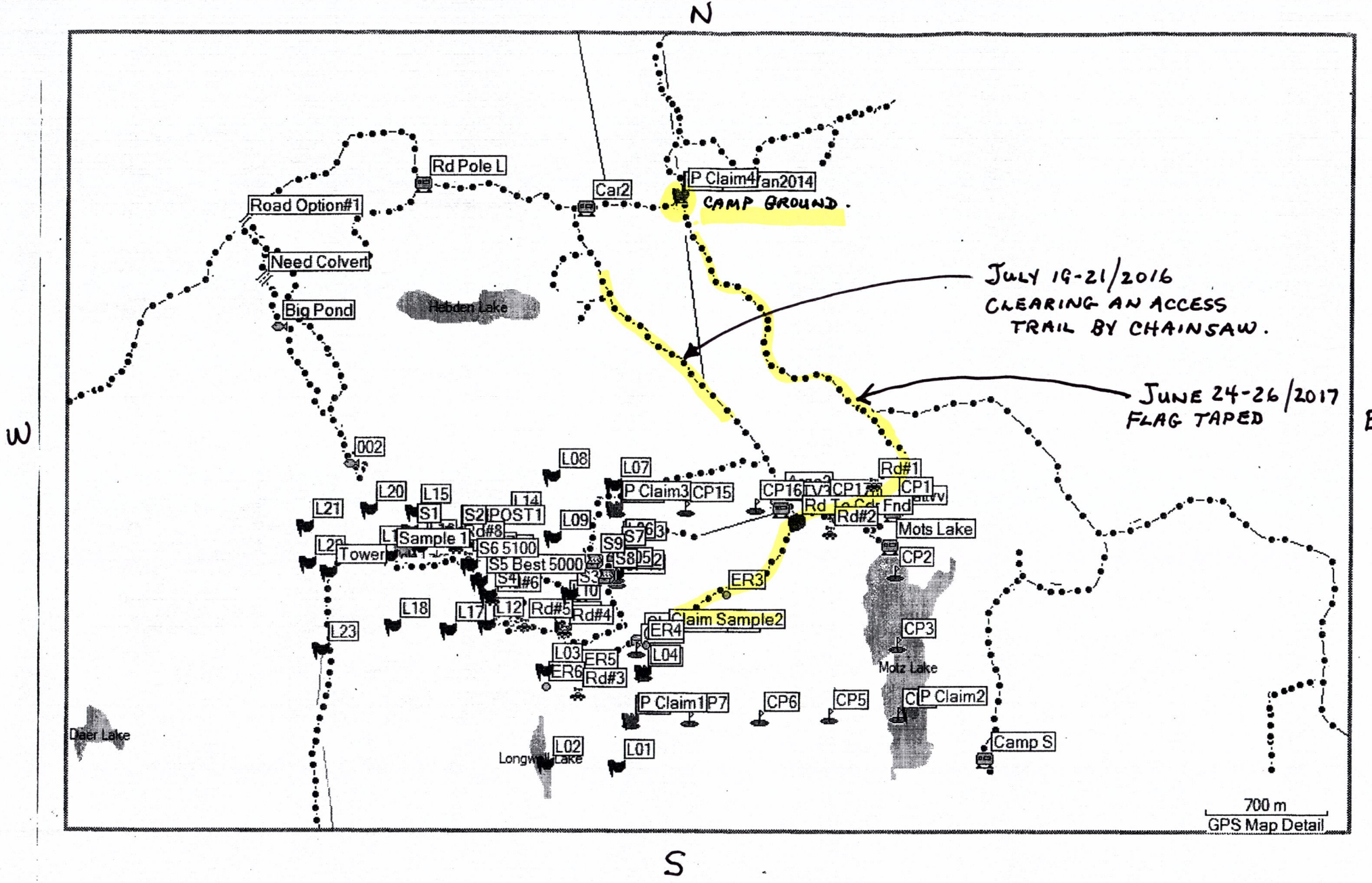


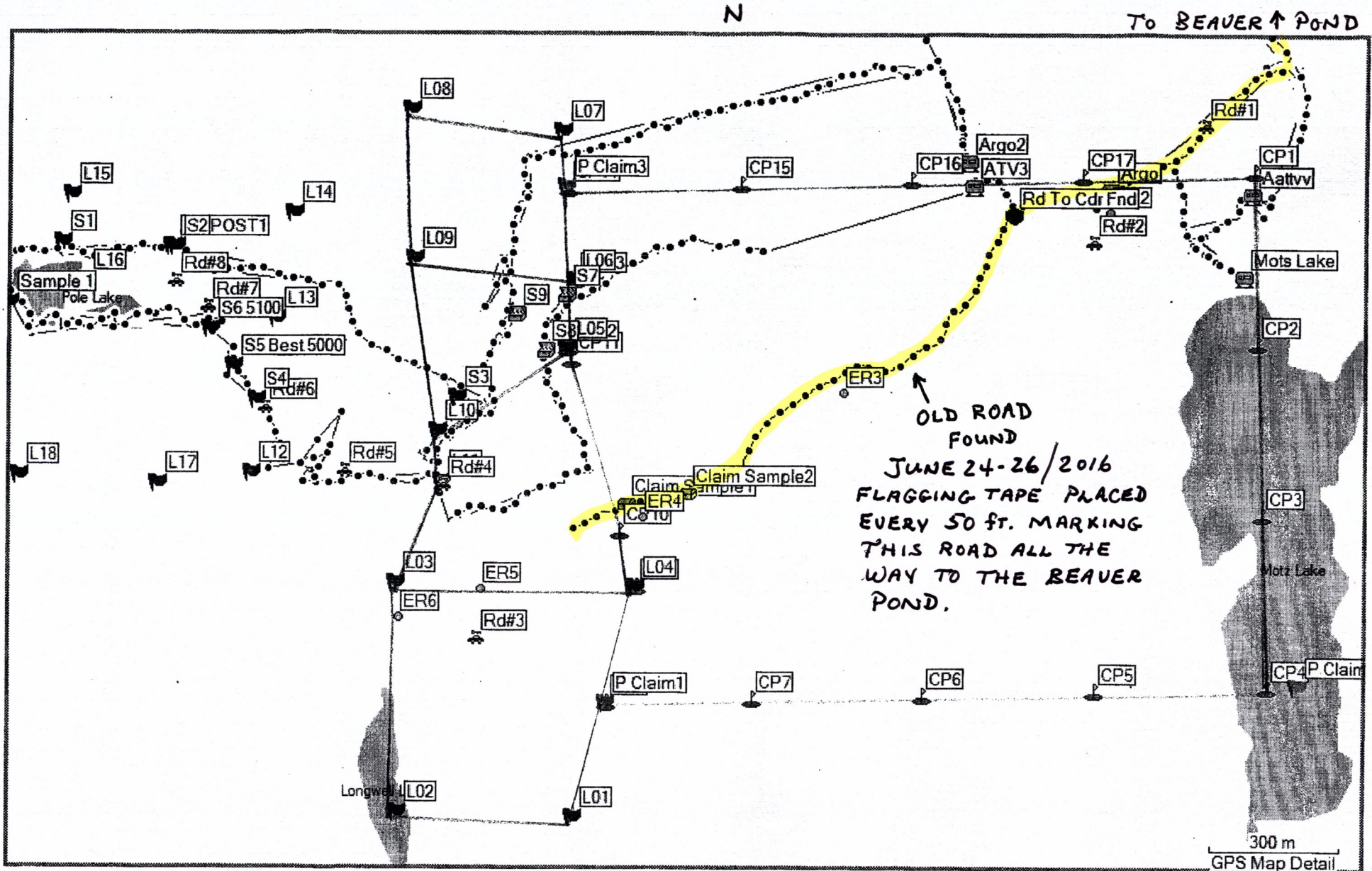


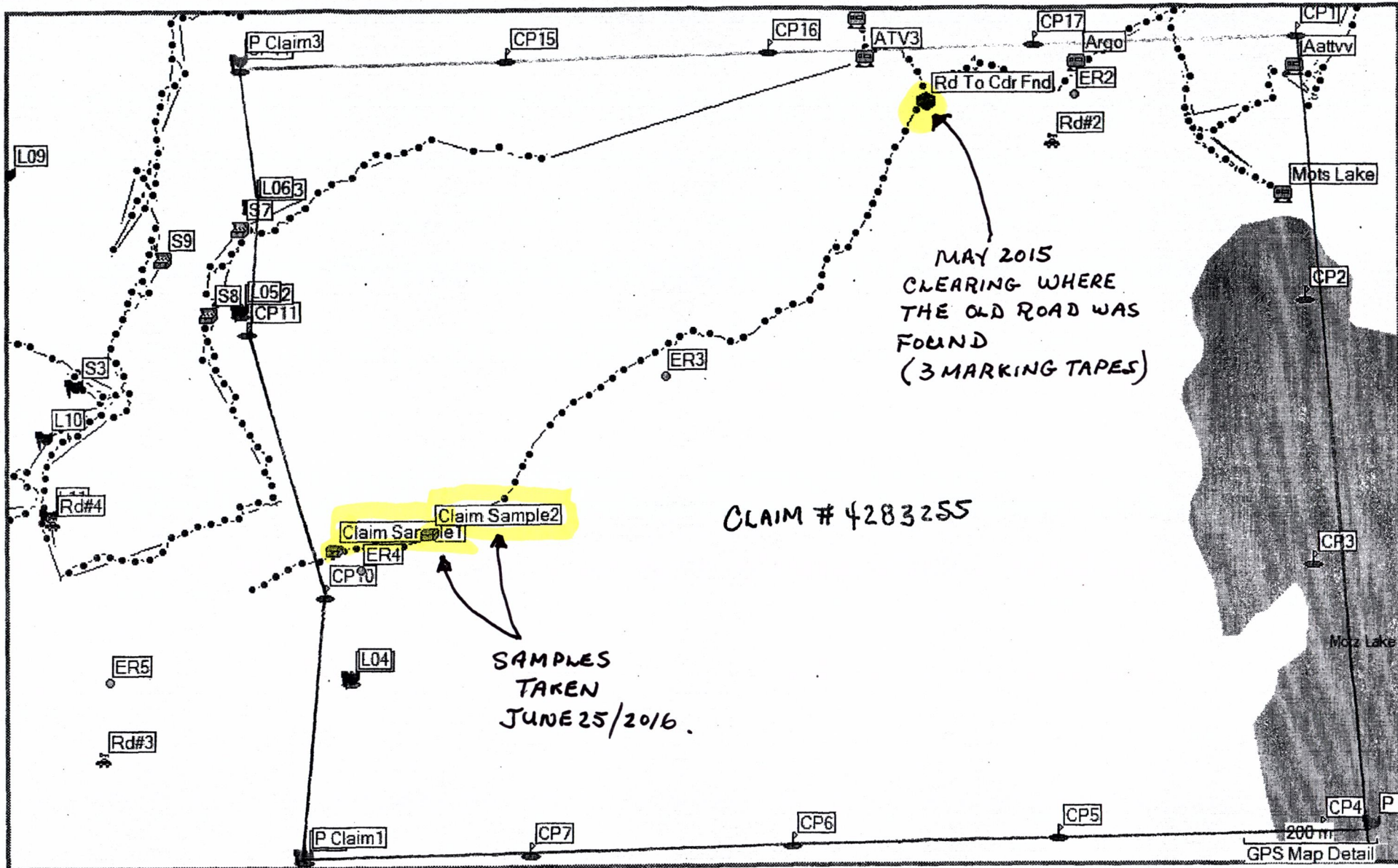
Google Earth







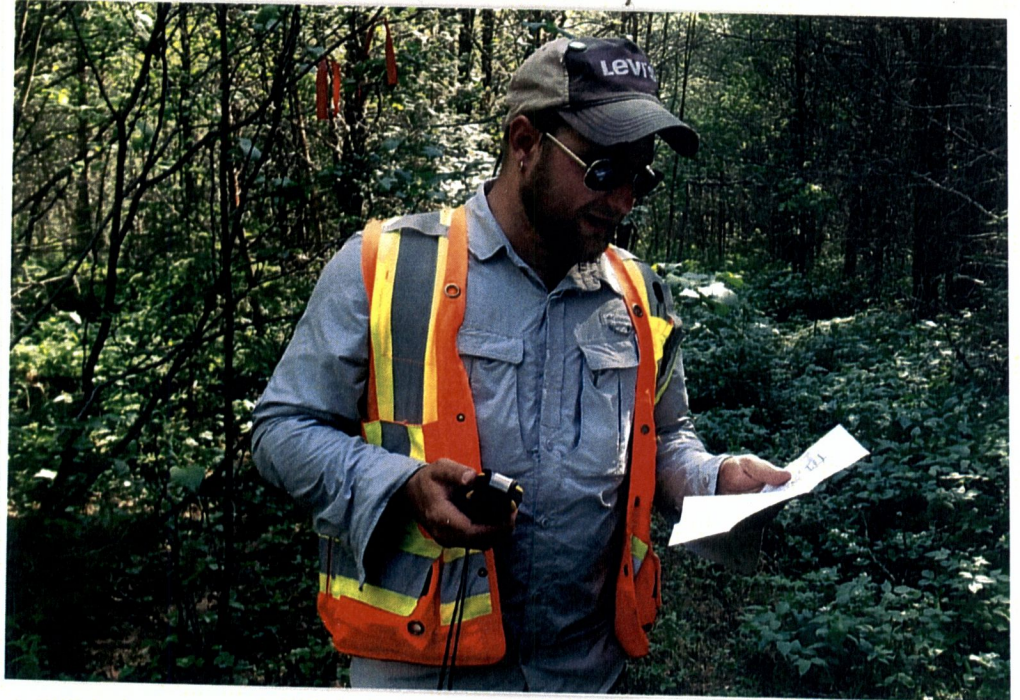




THE ROADS HAVE
BECOME OVERGROWN
WITH ALDER...
OFTEN TYPICAL OF
VERY FERTILE
CARBONATE
COMPLEXES.



THE 3 MARKING TAPES
OF MAY 2015, MARKING
THE OLD BUSH ROAD
USED IN THE 80S.



JULY 19-21/2016
CLEARING AN ACCESS
TRAIL BY CHAINSAW.



CAMP GROUND SITE



SAMPLE # 2, TAKEN
JUNE 25, 2016
SAMPLE # 1 WAS
TAKEN CLOSEBY.



CAMP GROUND SITE

