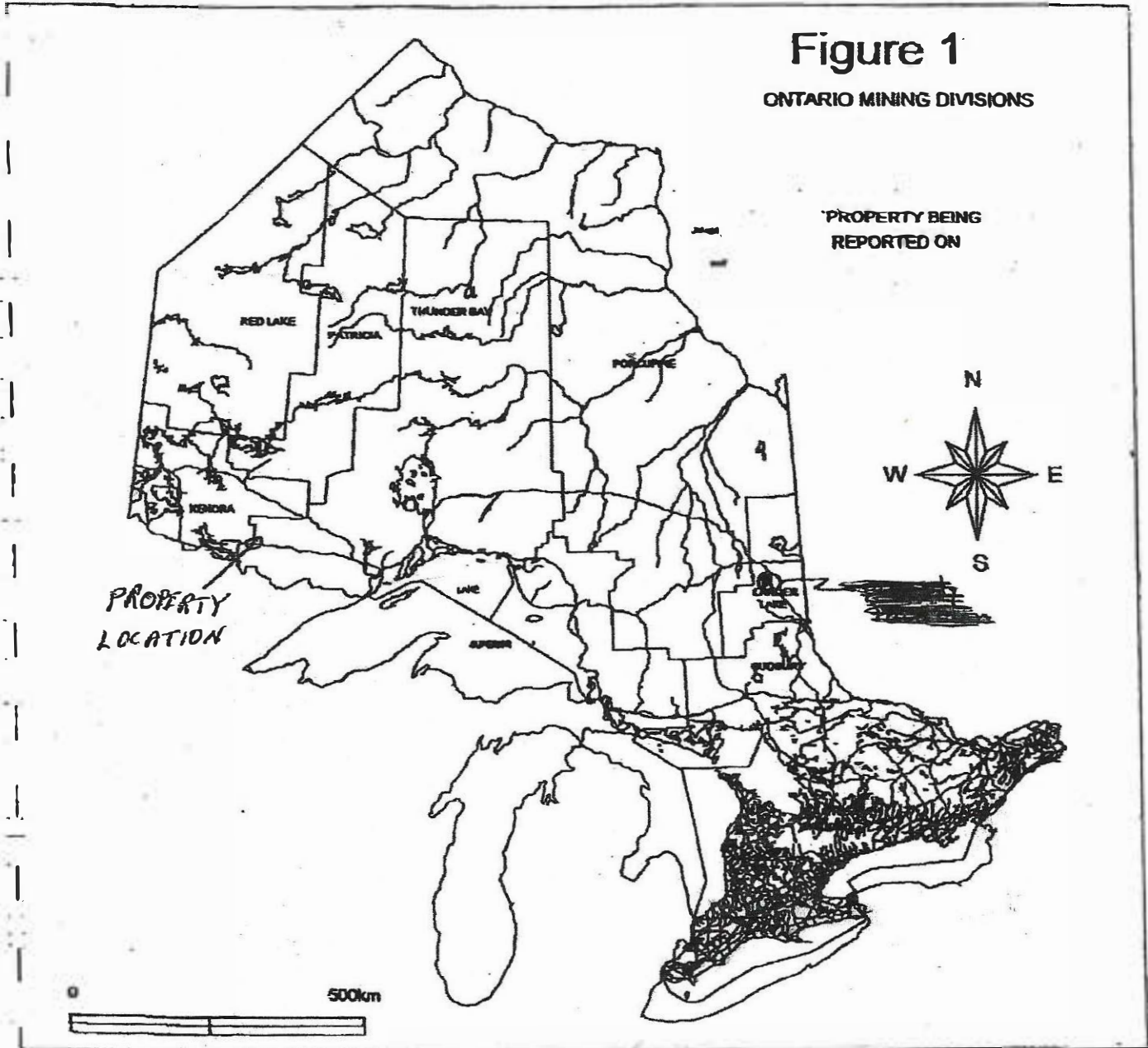


We are committed to providing [accessible customer service](#).

If you need accessible formats or communications supports, please [contact us](#).

Nous tenons à améliorer [l'accessibilité des services à la clientèle](#).

Si vous avez besoin de formats accessibles ou d'aide à la communication, veuillez [nous contacter](#).



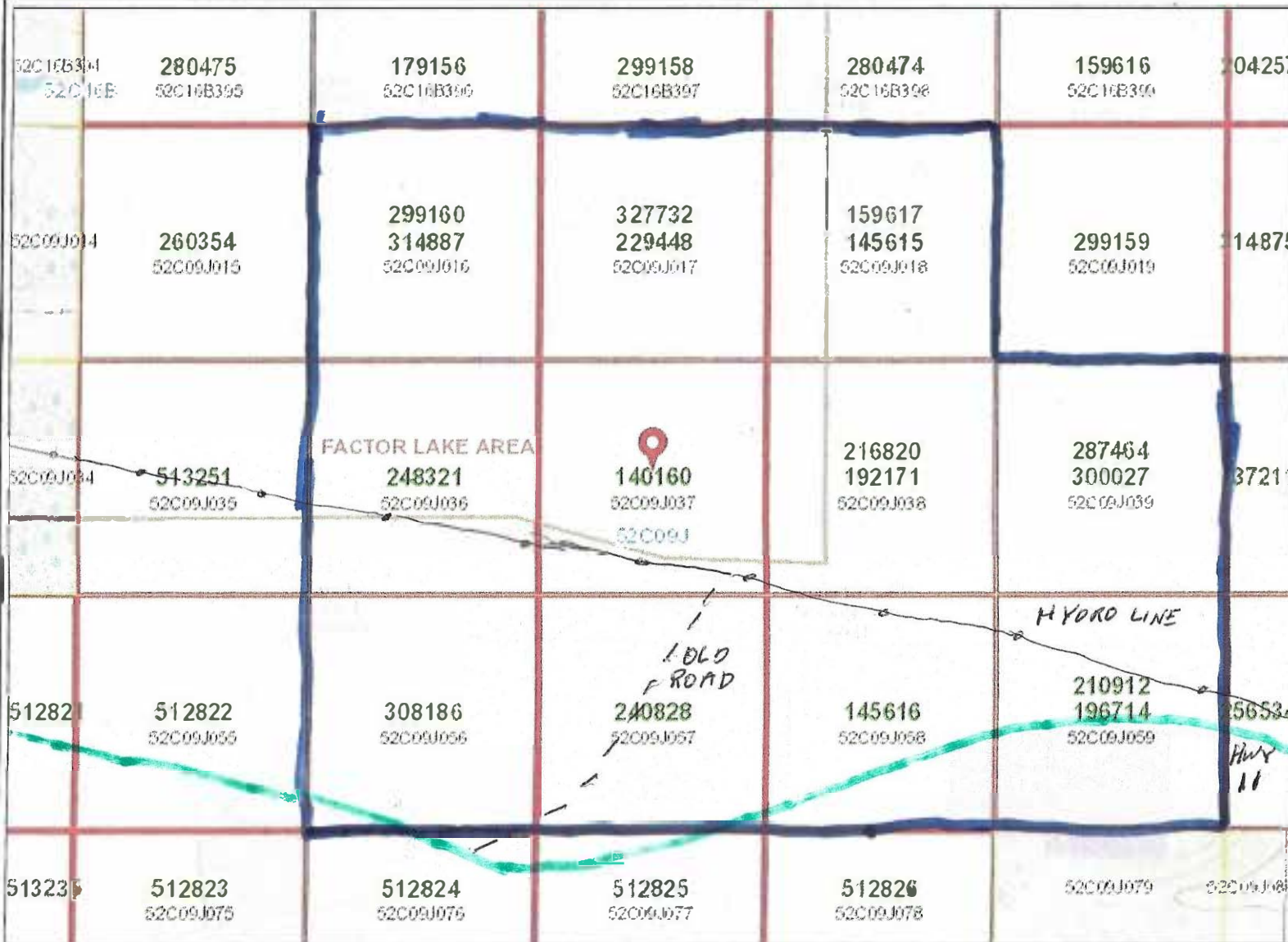
WORK TO BE APPLIED TO THIS BLOCK OF CLAIMS



MINISTRY OF NORTHERN DEVELOPMENT AND MINES  
MLAS Map Viewer

MLAS Map

Notes:



- Legend**
- Provincial Grid Cell**
    - Available
    - Pending
    - Unavailable
  - Mining Claim**
  - Mining Lease**
    - Surface Rights Only
    - Mining Rights Only
    - Surface and Mining Rights
  - Mining Licence of Occupation**
    - Surface Rights Only
    - Mining Rights Only
    - Surface and Mining Rights
  - Mining Patent**
    - Surface Rights Only
    - Mining Rights Only
    - Surface and Mining Rights
  - Mining Division**
  - MNDM Townships and Areas**
  - Provincial Grid Group**
  - Non-Mining Land Tenure**
    - Patent, Surface Rights Only
    - Patent, Mining Rights Only
    - Patent, Surface and Mining Rights
    - Lease, Surface Rights Only
    - Lease, Mining Rights Only
    - Lease, Surface and Mining Rights
    - Water Power Lease Agreement
    - Licence of Occupation, Surface Rights Only

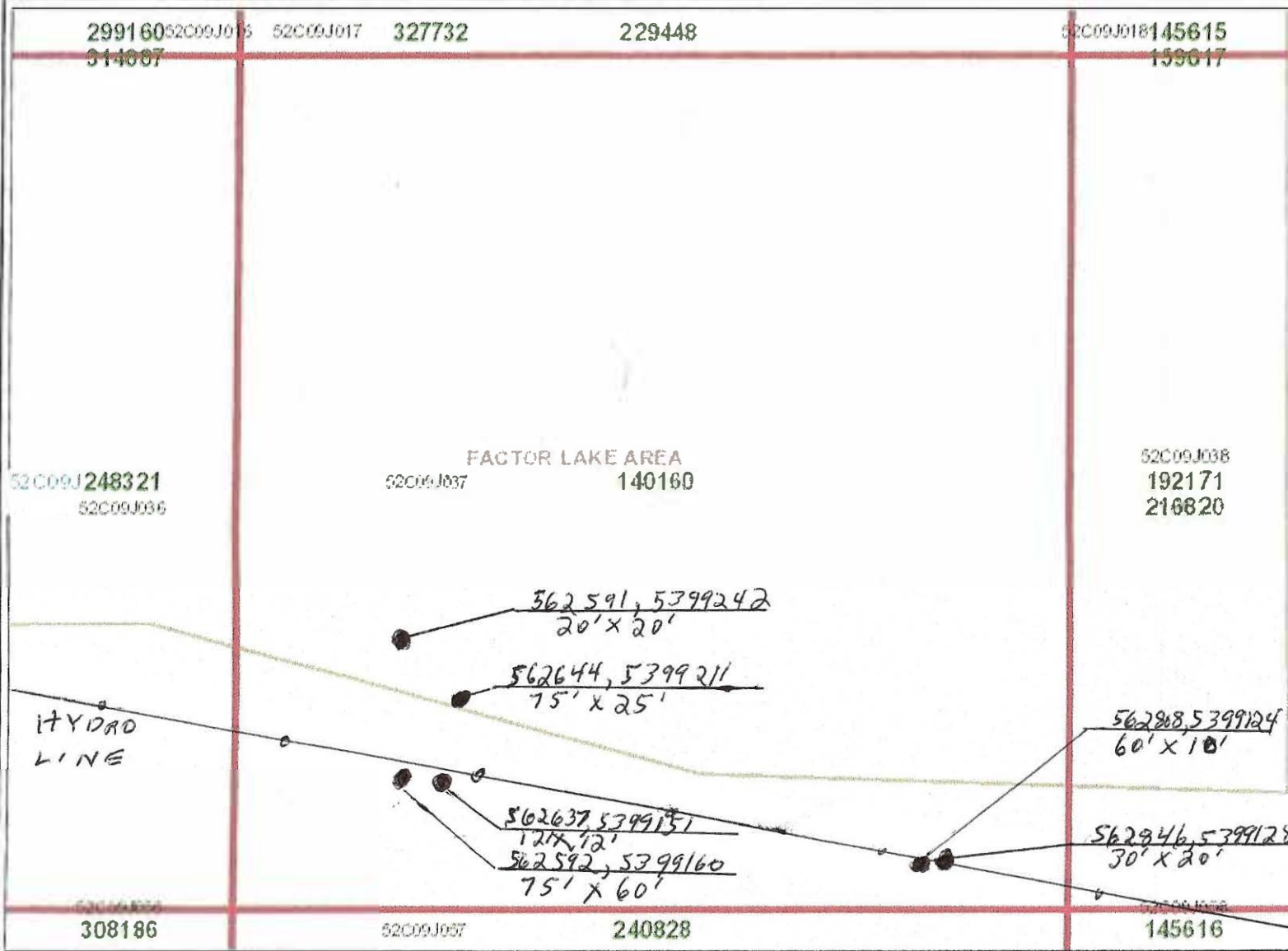


Projection: Web Mercator

The Ontario Ministry of Northern Development and Mines shall not be liable in any way for the use of, or reliance upon, this map or any information on this map. This map should not be used for: navigation, a plan of survey, routes, nor locations.

Imagery Copyright Notices: Ontario Ministry of Natural Resources and Forestry; NASA Landsat Program; First Base Solutions Inc.; Aéro-Photo (1961) Inc.; DigitalGlobe Inc.; U.S. Geological Survey.





### Legend

- Provincial Grid Cell**
  - Available
  - Pending
  - Unavailable
- Mining Claim**
- Mining Lease**
  - Surface Rights Only
  - Mining Rights Only
  - Surface and Mining Rights
- Mining Licence of Occupation**
  - Surface Rights Only
  - Mining Rights Only
  - Surface and Mining Rights
- Mining Patent**
  - Surface Rights Only
  - Mining Rights Only
  - Surface and Mining Rights
- Mining Division**
- MNDM Townships and Areas**
- Provincial Grid Group**
- Non-Mining Land Tenure**
  - Patent, Surface Rights Only
  - Patent, Mining Rights Only
  - Patent, Surface and Mining Right
  - Lease, Surface Rights Only
  - Lease, Mining Rights Only
  - Lease, Surface and Mining Rights
  - Water Power Lease Agreement
  - Licence of Occupation, Surface Rights Only



Projection: Web Mercator

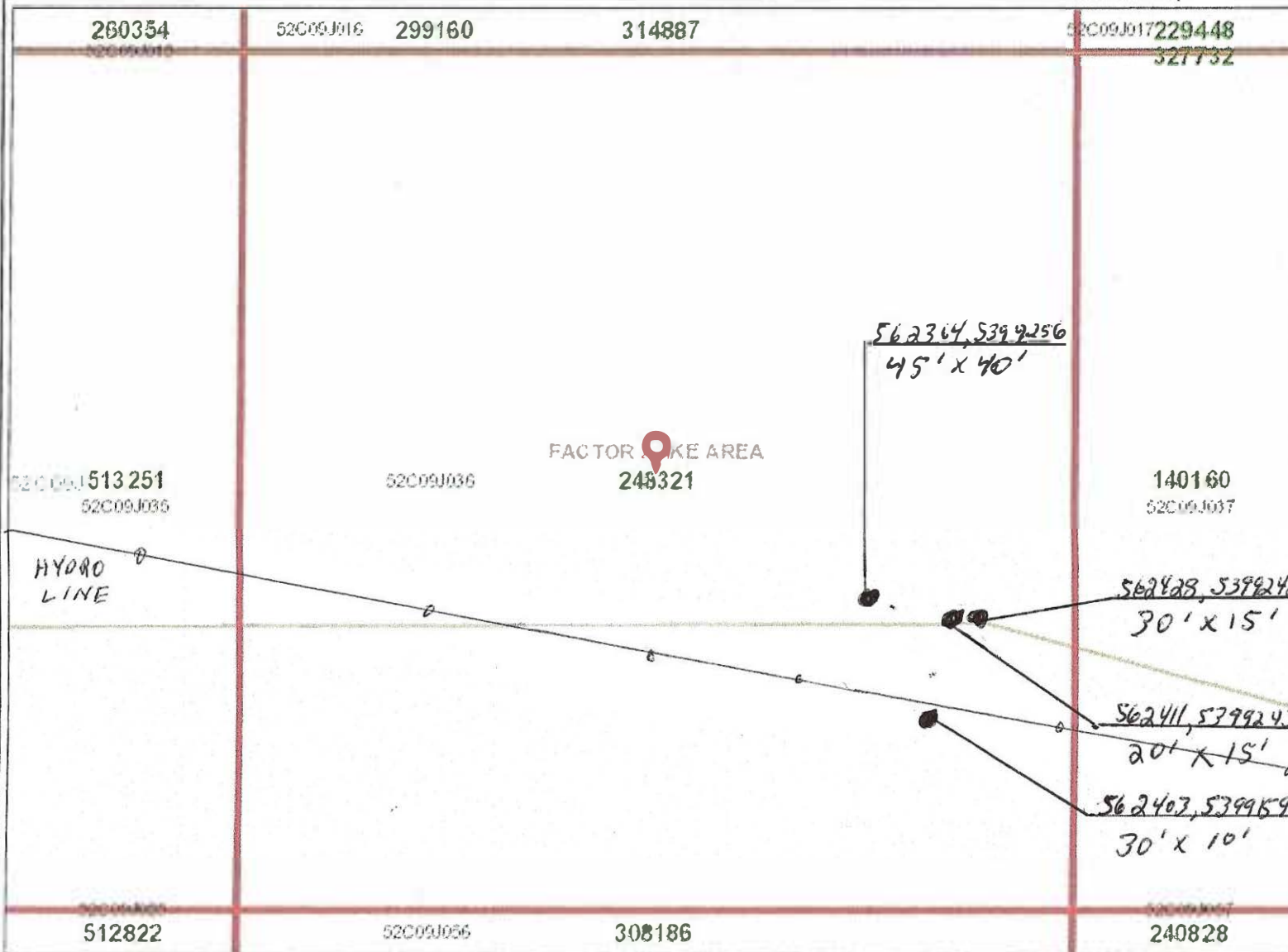


The Ontario Ministry of Northern Development and Mines shall not be liable in any way for the use of, or reliance upon, this map or any information on this map. This map should not be used for: navigation, a plan of survey, routes, nor locations.

Imagery Copyright Notices: Ontario Ministry of Natural Resources and Forestry; NASA Landsat Program; First Base Solutions Inc.; Aéro-Photo (1961) Inc.; DigitalGlobe Inc.; U.S. Geological Survey.







- ### Legend
- Provincial Grid Cell**
    - Available
    - Pending
    - Unavailable
  - Mining Claim**
  - Mining Lease**
    - Surface Rights Only
    - Mining Rights Only
    - Surface and Mining Rights
  - Mining Licence of Occupation**
    - Surface Rights Only
    - Mining Rights Only
    - Surface and Mining Rights
  - Mining Patent**
    - Surface Rights Only
    - Mining Rights Only
    - Surface and Mining Rights
  - Mining Division**
  - MNDM Townships and Areas**
  - Provincial Grid Group**
  - Non-Mining Land Tenure**
    - Patent, Surface Rights Only
    - Patent, Mining Rights Only
    - Patent, Surface and Mining Rights
    - Lease, Surface Rights Only
    - Lease, Mining Rights Only
    - Lease, Surface and Mining Rights
    - Water Power Lease Agreement
    - Licence of Occupation, Surface Rights Only

0 0.17 km

Projection: Web Mercator

The Ontario Ministry of Northern Development and Mines shall not be liable in any way for the use of, or reliance upon, this map or any information on this map. This map should not be used for: navigation, a plan of survey, routes, nor locations.

Imagery Copyright Notices: Ontario Ministry of Natural Resources and Forestry; NASA Landsat Program; First Base Solutions Inc.; Aéro-Photo (1961) Inc.; DigitalGlobe Inc.; U.S. Geological Survey.



# Daily Log

Sept. 8 2018

Move skidder to site

3 hrs.

12 P.M. to 3 P.M.

Sept. 11 2018

Mechanical stripping

7:30 A.M. - 11:30 A.M.

8.5 hrs.

12 P.M. - 4:30 P.M.

Sept. 12 2018

Mechanical stripping

8.5 hrs.

7:30 A.M. - 11:30 A.M.

12 P.M. - 4:30 P.M.

Sept. 13 2018

Mechanical stripping

7:30 A.M. - 11:30 A.M.

6 hrs.

12 P.M. - 2 P.M.

Sept. 15

Move skidder back

3 hrs

12 P.M. - 3 P.M.

---

29 total hrs.

Log of Activities

Dates of mechanical stripping: Sept 8 - 15 2018

A Timberjot 350 turbo skidder was used for this job.

DAVID KROOCMO - PROSPECTOR (42 years experience)

Skidder Operator: DAVID KROOCMO

Expenditures

Mechanical Stripping - 29 hrs. x \$100	- \$2900
fuel	- \$730.33
transportation	- \$150.21
meals	- \$52.94
	<hr/>
	\$ 3833.28

Report Preparation

Report and maps prepared by DAVID KROOCMO

Date Completed: April 18 2019

Signature David Kroocmo

## Summary

The property is located in the Factor Lake Area 40 kms. west of Aitken and just north of Hwy 11.

An old logging road has the best access to the property. It heads north from highway 11 and cuts through claim 240828 and hits claim 140160 at the power line.

The property lies along the Quaternary Fault. The purpose of this program of mechanical stripping is to determine what caused the pit channel anomalous from an airborne survey flown in the eighties.

Typical sulfides in the area are iron pyrite, chalcopyrite and arsenopyrite.

I stripped off ten areas exposing more bedrock. The GPS coordinates are shown on attached map.

I will be doing a sampling program this summer.





1 sample collected from the 10 areas stripped on the Dave Kroocmo property. Most samples contain visible iron pyrite, chalcopyrite and arseno



15u

0562403

5362403





0562428

5399242

30'x15'



15u

0562364

5399256

40'x45'