

We are committed to providing [accessible customer service](#).
If you need accessible formats or communications supports, please [contact us](#).

Nous tenons à améliorer [l'accessibilité des services à la clientèle](#).
Si vous avez besoin de formats accessibles ou d'aide à la communication, veuillez [nous contacter](#).

WORK REPORT

Rock Sampling

Mining Claim 109147, Cell ID 31E01A219,
covering part of Legacy Claim 1501341

Faraday Township (G-3147)

Southern Ontario Mining Division

N.T.S. 31E/01

For

Skead Holdings Ltd.

(Client Number 194897)

Jim Laidlaw

09 November 2018

Madoc ON

INTRODUCTION

Robert A. MacGregor P.Eng., (client number 162287) engaged Jim Laidlaw of Madoc Ontario to conduct rock sampling on Mining Claim 109147 Faraday Township (G-3147), N.T.S. 31E/01, located in the Southern Ontario Mining Division.

CLAIM HOLDER

The claims are held in 100% in the name of Skead Holdings Ltd. (client number 194897).

Field Work - Mining Claim 109147

Jim Laidlaw, October 9, 2018

Chris Fouts, October 9, 2018

Office Work - Mining Claim 109147

Jim Laidlaw

September 27, 2018 - GIS and data compilation, 3 hours.

September 29, 2018 - GIS and data compilation, 3 hours.

September 30, 2018 - GIS and data compilation, 3 hours.

October 9, 2018 - Sample shipping via Purolator, Belleville ON, 2 hours.

November 6, 2018 - Data Tabulation, 4 hours.

November 7, 2018 - Map Making, 7 hours.

November 8, 2018 - Report writing, 4 hours.

WORK PERFORMED

The area where this work was performed is in the south-east quadrant of Mining Claim 109147, Cell ID 31E01A219, and covering part of Legacy Claim 1501341.

The area of interest is over a site formerly held by El Nino Ventures Inc. where there was anomalous Thorium analysis, see Assessment File: 20004085, P 6, Figure 3, El Nino Ventures Inc., Silver Crater-Baumhour-Campbell Occurrence Showing #2, Faraday Township, Plan G-3147, Cardiff Township, South Part, Plan G-3044, Southeastern Ontario Trench and, Assay Sample Locations, Radioactivity Highlights.

A GIS Project of this Figure 3 was made to facilitate map production for field and report use, and generate UTM coordinates to target rock sample objective areas. While in the field, historic samples SC2/6 & 7 were located and a long-term averaged UTM coordinate for these adjacent sample locations was made. This sample location value was used to georeference this Figure 3, and to redraw the original control grid on the "Skead sample map".

The rock sampling objectives were to obtain higher radiometric instrument reading counts and radioactive samples, (with potentially higher Thorium analysis, thus possible anomalous Rare-earth values upon chemical analysis). To that end, Jim Laidlaw and Chris Fouts performed the rock sampling on the 9 October 2018, and 10 samples were collected, and the sample numbers are labelled SC2_10 to SC2_19. Sample locations were picked using a Radiation Solutions Inc. RS-25 Super-Spec spectrometer instrument, Serial Number 2664, on loan from the Energy Northern Development and Mines, Resident Geologist Office, Tweed ON. High total count reading sites were determined and the rock samples were obtained from these anomalous radioactive areas. The spectrometer assay function on this instrument was not functioning at this time.

There are several generations of outcrop stripping and trenching, the most recent and extensive and relatively well exposed workings provided better exposed outcrops for radiometric readings and rock sampling, (these larger newer STRIPPED AREAS are reproduced on the Skead sample map, from observations and polygon production, made from examining Google Earth images of this work area); and the newer areas overprint the older historical stripped and trenched features. There was much difficulty in obtaining decent rock samples, mainly due to smooth polished outcrop surface. Similarly, rock observations within the stripped areas overall, were obscured by forest litter debris and lichen cover.

Rock units observed are pink feldspar-pyroxene-biotite pegmatite (0.40 m to 3.5 m wide), pink syenite pegmatite (0.70 m wide) and medium to dark grey, fine to medium, feldspar-pyroxene paragneiss (which have extensive areal coverage throughout the stripped areas). There are widespread gossanous patches throughout the paragneiss exposures. Observed minerals in the various rock units are feldspar, pyroxene, biotite, quartz, diopside and fluorite and trace sulphides. Spot radiometric readings throughout the outcrop areas range from 650 to 14000 cps.

The sample locations were determined using a Garmin GPSmap76CSx hand-held GPS unit; recording Waypoint, Sample Number, UTM Easting and Northing (coordinates; Map Datum NAD 83), Spot Counts per Second (total count radiometric readings) and Sample Descriptions; see attached table - SKEAD HOLDINGS LTD.: Geological Observations, Rock Sampling and Radiometric Readings over the Historic SILVER CRATER-BAUMHOUR-CAMPBELL OCCURRENCE SHOWING #2, in Claim 109147, Faraday Township, N.T.S. - 31E/01

A map ("The Skead sample map") has been produced from the field observations and incorporating elements from the El Nino Figure 3, and Google Earth as noted above. See attached image: SKEAD HOLDINGS LTD., Rock Sample Numbers, Radiometric Readings and Rock Type and Historic Grid over the Historic Silver Crater-Baumhour-Campbell Occurrence Showing #2 Area Grid, Faraday Township, Mining Claim 109147, N.T.S. - 31E/01, Scale - 1:1 500 or 1 cm = 15 m, Drawn By: Jim Laidlaw, Date: 08 November 2018.

Samples were shipped to Mr. Bob MacGregor to his address in Sault Ste. Marie ON, by Purolator courier from Belleville ON. Jim Laidlaw shipped these samples.

Jim Laidlaw authored this report, table and maps for Mr. Bob MacGregor P.Eng. to use by Skead Holdings Ltd. for their assessment requirements to hold these claims in good standing.

REFERENCES

ASSESSMENT FILE: 20004085

Report On An Exploration Program On The Silver Crater-Baumhour-Campbell Occurrence, Faraday Township, Mineral Claim 4201511 And The Canadian All Metals Occurrence, Monmouth Township, Mineral Claims 4201541 and 4201647, Southern Ontario Mining Division, N.T.S. 31D/16 and 31E/01, For El Nino Ventures Inc., December 15, 2006, T.J. Beesley Geological Inc.

Jim Laidlaw

09 November 2018

Madoc ON

SKEAD HOLDINGS LTD.: Geological Observations, Rock Sampling and Radiometric Readings over the Historic SILVER CRATER-BAUMHOUR-CAMPBELL OCCURRENCE SHOWING #2, in Claim 109147, Faraday Township, N.T.S. - 31E/01

WAYPOINT	SAMPLE_NUMBER	UTME	UTMN	SPOT_CPS	SAMPLE_DESCRIPTION
L003.0	SC2_10	735654	4991721	2800	Pegmatite, feld-pyx-dio, with mafic paragneiss inclusions, 1m exposure. Historic trench overburden filled, no exposed outcropping in trench.
L006.0	SC2_11	735654	4991676	10000	Pegmatite, feld-pyx-bio 40 cm wide irregular dike in paragneiss outcrop. In recently large stripped outcrop area; surfaces are highly glacially polished and difficult to obtain samples. Numerous radiometric spot anomalies over this area of 600, 3000, 4000 and 10000 cps.
F006.0	SC2_12	735660	4991664	2800	Pegmatite with pyroxene paragneiss.
L007.0	SC2_13	735657	4991603	2100	Pegmatite, feld-pyx, with medium-grained dark green pyroxene, purple fluorite in knotty masses, in a 3.5 m wide irregular dike, in new stripped area. Smooth polished outcrop surface makes difficulty in obtaining decent sample. Adjacent areas of paragneiss with gossanous appearing patches. Spot radiometric responses throughout outcrop area of 650 to 4200 cps.
L008.0	SC2_14	735660	4991629	7000	Pegmatite cross-cutting variably textured paragneiss with feld, pyx, bio, tr qtz, tr fluorite, tr pyrite, smooth flat outcrop surface. Spot radiometric responses throughout outcrop area of 650 to 3000 cps, particularly in more gossanous appearing sections of this outcrop area.
L009.1	SC2_15	735704.5	4991627	14000	Syenite pegmatite, 70 cm wide, med-coarse grained, feld-pyx± qtz in contact with grey fel-pyx paragneiss, striking 309°, dip SW 65-75° bedding/foliation? Twin of historic sample SC2/6 (locate sample tag). 14000 cps scint reading.
L009.2	SC2_16	735707.5	4991628	7000	Syenite pegmatite, 70 cm wide, med-coarse grained, feld-pyx± qtz in contact with grey fel-pyx paragneiss, striking 309°, dip SW 65-75° bedding/foliation? Twin of historic sample SC2/7 (locate sample tag). 7000 cps scint reading.
L010.0	SC2_17	735725	4991620	7000	Pegmatite, fel-pyx-bio dike of indeterminate width. Shot rock from historic blasted pit.
F011.0	SC2_18	735724	4991601	6800	Pegmatite, fel-pyx-bio dike of indeterminate width. Shot rock from historic blasted pit.
L011.0	SC2_19	735728	4991621	6500	Pegmatite, fel-pyx-bio dike of indeterminate width. Shot rock from historic blasted pit.
F001.0	*	735634	4991682	3900	Pink granite pegmatite cutting paragneiss; strike 321°, dip about SW 70°.
F003.0	*	735657	4991687	1900	Paragneiss in contact with pink variable textured pegmatite with pyx. Flat outcrop area.
F004.0	*	735661	4991688	2400	Contact of paragneiss and pink pegmatite; pyx-rich, rare minor fluorite. Flat outcrop area.
F005.0	*	735660	4991664	*	Wide area of stripped bedrock. Medium to dark grey, fine to medium, fel-pyx paragneiss, (white fel, dark green pyx, patchy light rust staining along horizons (foliation), texture and composition show slight variability.

Abbreviations: fel - feldspar; pyx - pyroxene; bio - biotite; qtz - quartz; dio - diopside; cps - counts per second; tr - trace; PEG - pegmatite; SYN - syenite; PAR - paragneiss.

Datum: NAD 83

Personnel: Jim Laidlaw and Chris Fouts

Coordinates: Universal Trans-Mercator Grid

09 October, 2018

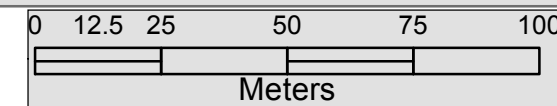
735500

78°0'30"W

735750

736000

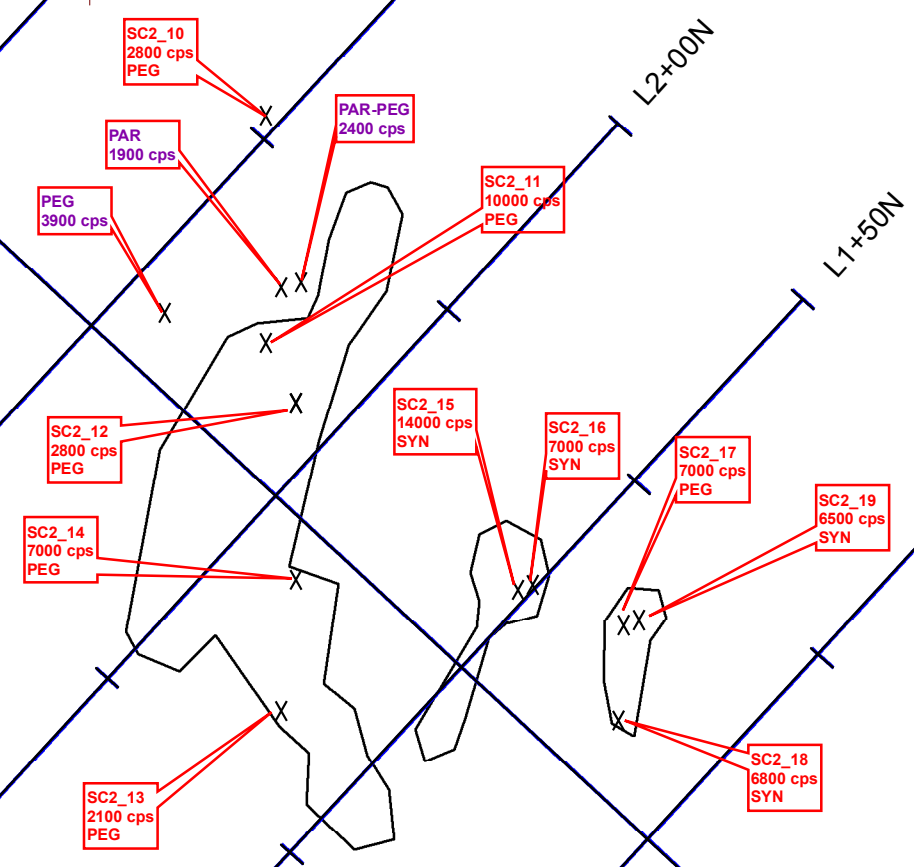
SKEAD HOLDINGS LTD.
 Rock Sample Numbers, Radiometric Readings and Rock Type
 and Historic Grid over the Historic Silver Crater-Baumhour-Campbell
 Occurrence Showing #2 Area Grid
 Faraday Township, Mining Claim 109147
 N.T.S. - 31E/01
 Scale - 1:1 500 or 1 cm = 15 m
 Drawn By: Jim Laidlaw
 Date: 08 November 2018



Faraday Township

**MINING CLAIM
109147**

298824



280717

300269

735500

735750

736000

45°2'24"N



4991600

4991600

FARRADAY TOWNSHIP SAMPLING

Sample Assay Numbers

<u>Assay No.</u>	<u>Sample Collection No</u>
N580001	SC2 – 19
N580002	SC 2 – 18
N580003	SC2 - 16
N580004.	SC2 - 10
N580005	SC2 - 17
N580006	SC2 - 15
N580007	SC2 - 12
N580008	SC2 - 11
N580009	SC2 - 14
N5800011	SC2 - 13



ALS Canada Ltd.
2103 Dollarton Hwy
North Vancouver BC V7H 0A7
Phone: +1 (604) 984 0221 Fax: +1 (604) 984 0218
www.alsglobal.com/geochemistry

To: **ROBERT MACGREGOR**
28 FORD STREET
SAULT STE. MARIE ON P6A 4N4

Page: 1
Total # Pages: 2 (A - D)
Plus Appendix Pages
Finalized Date: 1-NOV-2018
This copy reported on
2-NOV-2018
Account: RMLMUKFU

CERTIFICATE SD18262025

Project: Robert MacGregor

This report is for 11 Rock samples submitted to our lab in Sudbury, ON, Canada on 18-OCT-2018.

The following have access to data associated with this certificate:

ROBERT MACGREGOR

SAMPLE PREPARATION

ALS CODE	DESCRIPTION
WEI-21	Received Sample Weight
LOG-22	Sample login - Rcd w/o BarCode
CRU-QC	Crushing QC Test
PUL-QC	Pulverizing QC Test
CRU-31	Fine crushing - 70% <2mm
SPL-21	Split sample - riffle splitter
PUL-31	Pulverize split to 85% <75 um

ANALYTICAL PROCEDURES

ALS CODE	DESCRIPTION
ME-MS61	48 element four acid ICP-MS

This is the Final Report and supersedes any preliminary report with this certificate number. Results apply to samples as submitted. All pages of this report have been checked and approved for release.

***** See Appendix Page for comments regarding this certificate *****

Signature:

Colin Ramshaw, Vancouver Laboratory Manager



ALS Canada Ltd.
 2103 Dollarton Hwy
 North Vancouver BC V7H 0A7
 Phone: +1 (604) 984 0221 Fax: +1 (604) 984 0218
 www.alsglobal.com/geochemistry

To: **ROBERT MACGREGOR**
28 FORD STREET
SAULT STE. MARIE ON P6A 4N4

Page: 2 - A
 Total # Pages: 2 (A - D)
 Plus Appendix Pages
 Finalized Date: 1-NOV-2018
 Account: RMLMUKFU

Project: Robert MacGregor

CERTIFICATE OF ANALYSIS SD18262025

Sample Description	Method Analyte Units LOD	WEI-21	ME-MS61	ME-MS61	ME-MS61	ME-MS61	ME-MS61	ME-MS61	ME-MS61	ME-MS61	ME-MS61	ME-MS61	ME-MS61	ME-MS61	ME-MS61	ME-MS61
		Recvd Wt. kg	Ag ppm	Al %	As ppm	Ba ppm	Be ppm	Bi ppm	Ca %	Cd ppm	Ce ppm	Co ppm	Cr ppm	Cs ppm	Cu ppm	Fe %
		0.02	0.01	0.01	0.2	10	0.05	0.01	0.01	0.02	0.01	0.1	1	0.05	0.2	0.01
N580001		1.36	<0.01	4.89	2.3	580	2.06	0.11	1.07	<0.02	23.2	1.9	18	3.39	3.5	0.63
N580002		1.31	0.02	4.04	2.2	360	23.4	0.14	12.55	0.07	107.5	9.7	5	1.85	23.5	7.93
N580003		1.31	<0.01	4.43	2.6	380	14.80	0.06	6.04	0.06	130.5	6.2	7	2.24	2.1	5.71
N580004		0.69	0.05	2.57	3.6	300	29.9	0.10	5.76	0.07	74.9	9.1	19	1.90	2.3	6.74
N580005		0.81	0.03	5.66	1.4	710	11.60	0.04	2.74	0.06	78.8	5.2	8	4.52	2.8	2.98
N580006		2.16	0.07	3.64	4.2	310	22.8	0.07	9.39	0.13	160.0	9.2	5	1.99	1.5	7.86
N580007		1.29	0.06	2.62	2.0	290	21.7	0.06	7.04	0.08	84.8	8.5	8	1.59	14.7	5.41
N580008		0.99	0.05	6.79	2.4	900	10.85	0.10	5.00	0.11	86.6	12.5	41	3.78	24.3	5.85
N580009		0.22	0.15	3.42	4.6	400	25.8	0.23	9.29	0.19	91.2	21.4	43	0.99	64.0	9.49
N580010		0.16	0.14	1.12	7.5	10	0.39	0.45	0.76	0.03	8.50	4.9	31	0.34	110.0	6.29
N580011		0.29	0.02	4.89	2.9	280	20.4	0.05	9.40	0.12	117.5	10.0	5	1.17	2.5	7.13

***** See Appendix Page for comments regarding this certificate *****



ALS Canada Ltd.
 2103 Dollarton Hwy
 North Vancouver BC V7H 0A7
 Phone: +1 (604) 984 0221 Fax: +1 (604) 984 0218
 www.alsglobal.com/geochemistry

To: **ROBERT MACGREGOR**
28 FORD STREET
SAULT STE. MARIE ON P6A 4N4

Page: 2 - B
 Total # Pages: 2 (A - D)
 Plus Appendix Pages
 Finalized Date: 1-NOV-2018
 Account: RMLMUKFU

Project: Robert MacGregor

CERTIFICATE OF ANALYSIS SD18262025

Sample Description	Method	ME-MS61	ME-MS61	ME-MS61	ME-MS61	ME-MS61	ME-MS61	ME-MS61	ME-MS61	ME-MS61	ME-MS61	ME-MS61	ME-MS61	ME-MS61	ME-MS61	
	Analyte	Ga	Ge	Hf	In	K	La	Li	Mg	Mn	Mo	Na	Nb	Ni	P	Pb
Units		ppm	ppm	ppm	ppm	%	ppm	ppm	%	ppm	ppm	%	ppm	ppm	ppm	ppm
LOD		0.05	0.05	0.1	0.005	0.01	0.5	0.2	0.01	5	0.05	0.01	0.1	0.2	10	0.5
N580001		18.95	0.11	38.5	0.008	4.47	6.5	16.6	0.08	133	1.86	1.38	46.5	1.2	20	99.1
N580002		23.0	0.13	10.1	0.085	2.83	49.7	106.0	1.42	2840	1.42	1.77	5.1	0.7	1130	51.4
N580003		23.7	0.19	104.0	0.064	3.37	48.0	72.7	1.01	2260	1.46	1.81	183.0	2.2	1200	190.5
N580004		18.80	0.16	58.5	0.116	1.70	23.5	84.1	1.97	2530	1.03	1.02	52.3	4.9	1480	89.0
N580005		24.9	0.14	24.1	0.044	4.21	25.2	48.0	0.65	966	0.91	1.34	22.7	1.9	680	72.1
N580006		24.2	0.30	92.9	0.102	2.59	56.2	103.0	1.44	3190	1.53	1.65	247	2.3	1700	103.5
N580007		16.65	0.21	84.5	0.087	1.98	23.5	73.8	0.99	1820	1.44	0.91	71.2	1.7	1310	179.5
N580008		23.0	0.22	6.2	0.057	3.54	30.6	123.0	2.39	1550	3.22	2.76	86.1	7.8	1200	38.1
N580009		18.80	0.20	10.5	0.117	1.94	29.5	115.0	2.95	3230	1.39	1.94	104.0	13.7	3050	295
N580010		3.52	<0.05	0.5	0.008	0.06	4.4	1.9	0.30	280	5.57	0.06	1.3	9.2	70	4.7
N580011		32.0	0.18	3.7	0.101	3.05	38.6	89.6	1.32	3600	1.14	2.65	27.6	3.6	1610	77.7



ALS Canada Ltd.
 2103 Dollarton Hwy
 North Vancouver BC V7H 0A7
 Phone: +1 (604) 984 0221 Fax: +1 (604) 984 0218
 www.alsglobal.com/geochemistry

To: **ROBERT MACGREGOR**
28 FORD STREET
SAULT STE. MARIE ON P6A 4N4

Page: 2 - C
 Total # Pages: 2 (A - D)
 Plus Appendix Pages
 Finalized Date: 1-NOV-2018
 Account: RMLMUKFU

Project: Robert MacGregor

CERTIFICATE OF ANALYSIS SD18262025

Sample Description	Method Analyte Units LOD	ME-MS61	ME-MS61	ME-MS61	ME-MS61	ME-MS61	ME-MS61	ME-MS61	ME-MS61	ME-MS61	ME-MS61	ME-MS61	ME-MS61	ME-MS61	ME-MS61	
		Rb ppm	Re ppm	S %	Sb ppm	Sc ppm	Se ppm	Sn ppm	Sr ppm	Ta ppm	Te ppm	Th ppm	Ti %	Tl ppm	U ppm	V ppm
		0.1	0.002	0.01	0.05	0.1	1	0.2	0.2	0.05	0.05	0.01	0.005	0.02	0.1	1
N580001		336	0.002	0.02	0.08	0.1	<1	2.3	323	3.06	<0.05	660	0.094	2.05	95.4	6
N580002		193.5	<0.002	0.17	0.06	2.6	<1	5.2	313	0.34	<0.05	400	0.030	1.19	31.9	40
N580003		244	0.002	0.01	0.10	2.0	<1	10.3	243	14.80	<0.05	1360	0.260	1.26	382	34
N580004		118.5	<0.002	0.01	0.23	7.7	<1	7.2	124.5	2.76	<0.05	480	0.117	0.60	78.9	57
N580005		313	<0.002	<0.01	0.17	2.1	<1	2.8	358	1.44	<0.05	267	0.056	2.61	57.3	20
N580006		196.0	<0.002	<0.01	0.20	2.8	1	14.3	209	24.0	<0.05	590	0.307	1.05	195.5	47
N580007		158.5	<0.002	0.09	0.15	2.0	1	7.3	167.0	4.39	<0.05	1340	0.157	1.01	142.0	31
N580008		293	0.003	0.09	0.18	10.7	<1	7.0	506	2.05	0.07	133.5	0.527	1.45	84.4	90
N580009		126.0	0.004	0.60	0.21	16.9	<1	10.7	199.5	4.95	0.15	173.5	0.273	0.73	367	117
N580010		2.5	0.004	1.59	0.20	0.3	<1	0.3	13.3	0.08	0.12	29.9	0.018	0.08	3.9	4
N580011		211	0.002	0.01	0.16	2.9	<1	7.9	170.5	1.81	<0.05	1250	0.070	1.03	127.0	43



ALS Canada Ltd.
 2103 Dollarton Hwy
 North Vancouver BC V7H 0A7
 Phone: +1 (604) 984 0221 Fax: +1 (604) 984 0218
 www.alsglobal.com/geochemistry

To: **ROBERT MACGREGOR**
28 FORD STREET
SAULT STE. MARIE ON P6A 4N4

Page: 2 - D
 Total # Pages: 2 (A - D)
 Plus Appendix Pages
 Finalized Date: 1-NOV-2018
 Account: RMLMUKFU

Project: Robert MacGregor

CERTIFICATE OF ANALYSIS SD18262025

Sample Description	Method Analyte Units LOD	ME-MS61 W ppm	ME-MS61 Y ppm	ME-MS61 Zn ppm	ME-MS61 Zr ppm	CRU-QC Pass2mm %	PUL-QC Pass75um %
		0.1	0.1	2	0.5	0.01	0.01
N580001		0.5	57.6	9	>500	84.5	93.3
N580002		1.5	84.5	294	281		93.3
N580003		0.5	139.5	199	>500		
N580004		0.5	86.2	244	>500		
N580005		0.4	45.6	94	>500		
N580006		1.1	187.5	287	>500		
N580007		0.9	142.0	190	>500		
N580008		0.4	78.0	206	226		
N580009		0.7	98.1	269	369		
N580010		810	2.5	21	14.2		
N580011		1.9	99.6	277	61.5		



ALS Canada Ltd.
2103 Dollarton Hwy
North Vancouver BC V7H 0A7
Phone: +1 (604) 984 0221 Fax: +1 (604) 984 0218
www.alsglobal.com/geochemistry

To: **ROBERT MACGREGOR**
28 FORD STREET
SAULT STE. MARIE ON P6A 4N4

Page: **Appendix 1**
Total # Appendix Pages: **1**
Finalized Date: **1-NOV-2018**
Account: **RMLMUKFU**

Project: Robert MacGregor

CERTIFICATE OF ANALYSIS SD18262025

CERTIFICATE COMMENTS

ANALYTICAL COMMENTS

Applies to Method: REE's may not be totally soluble in this method.
ME-MS61

LABORATORY ADDRESSES

Applies to Method: Processed at ALS Sudbury located at 1351-B Kelly Lake Road, Unit #1, Sudbury, ON, Canada.
CRU-31 CRU-QC LOG-22 PUL-31
PUL-QC SPL-21 WEI-21

Applies to Method: Processed at ALS Vancouver located at 2103 Dollarton Hwy, North Vancouver, BC, Canada.
ME-MS61



ALS Canada Ltd.
 2103 Dollarton Hwy
 North Vancouver BC V7H 0A7
 Phone: +1 (604) 984 0221 Fax: +1 (604) 984 0218
 www.alsglobal.com/geochemistry

To: **ROBERT MACGREGOR**
28 FORD STREET
SAULT STE. MARIE ON P6A 4N4

Page: 1
 Total # Pages: 3 (A - D)
 Plus Appendix Pages
 Finalized Date: 1-NOV-2018
 This copy reported on
 2-NOV-2018
 Account: RMLMUKFU

QC CERTIFICATE SD18262025

Project: Robert MacGregor

This report is for 11 Rock samples submitted to our lab in Sudbury, ON, Canada on 18-OCT-2018.

The following have access to data associated with this certificate:

ROBERT MACGREGOR		
------------------	--	--

SAMPLE PREPARATION	
ALS CODE	DESCRIPTION
WEI-21	Received Sample Weight
LOG-22	Sample login - Rcd w/o BarCode
CRU-QC	Crushing QC Test
PUL-QC	Pulverizing QC Test
CRU-31	Fine crushing - 70% <2mm
SPL-21	Split sample - riffle splitter
PUL-31	Pulverize split to 85% <75 um

ANALYTICAL PROCEDURES	
ALS CODE	DESCRIPTION
ME-MS61	48 element four acid ICP-MS

This is the Final Report and supersedes any preliminary report with this certificate number. Results apply to samples as submitted. All pages of this report have been checked and approved for release.

***** See Appendix Page for comments regarding this certificate *****

Signature: 
 Colin Ramshaw, Vancouver Laboratory Manager



ALS Canada Ltd.
 2103 Dollarton Hwy
 North Vancouver BC V7H 0A7
 Phone: +1 (604) 984 0221 Fax: +1 (604) 984 0218
 www.alsglobal.com/geochemistry

To: ROBERT MACGREGOR
 28 FORD STREET
 SAULT STE. MARIE ON P6A 4N4

Page: 2 - A
 Total # Pages: 3 (A - D)
 Plus Appendix Pages
 Finalized Date: 1-NOV-2018
 Account: RMLMUKFU

Project: Robert MacGregor

QC CERTIFICATE OF ANALYSIS SD18262025

Method Analyte Units LOD	ME-MS61 Ag ppm	ME-MS61 Al %	ME-MS61 As ppm	ME-MS61 Ba ppm	ME-MS61 Be ppm	ME-MS61 Bi ppm	ME-MS61 Ca %	ME-MS61 Cd ppm	ME-MS61 Ce ppm	ME-MS61 Co ppm	ME-MS61 Cr ppm	ME-MS61 Cs ppm	ME-MS61 Cu ppm	ME-MS61 Fe %	ME-MS61 Ga ppm
Sample Description	0.01	0.01	0.2	10	0.05	0.01	0.01	0.02	0.01	0.1	1	0.05	0.2	0.01	0.05
STANDARDS															
EMOG-17	67.4	4.65	598	140	1.86	5.49	1.91	20.1	46.6	744	54	7.00	8130	4.81	12.20
EMOG-17	68.1	4.63	593	220	1.95	5.97	1.94	20.1	50.1	752	59	7.44	8130	4.83	12.35
Target Range - Lower Bound	59.5	4.18	515	310	1.60	5.31	1.72	18.15	42.9	686	49	6.56	7750	4.42	10.75
Upper Bound	72.7	5.13	629	440	2.06	6.51	2.12	22.2	52.5	838	62	8.12	8910	5.42	13.25
MRGeo08	4.36	7.25	33.4	1110	3.15	0.69	2.68	2.33	70.4	19.4	98	11.85	614	3.91	18.95
Target Range - Lower Bound	4.00	6.64	29.5	920	2.98	0.60	2.35	2.00	66.2	17.7	81	11.20	587	3.55	17.50
Upper Bound	4.92	8.14	36.5	1270	3.76	0.76	2.90	2.48	81.0	21.9	102	13.80	675	4.37	21.5
OREAS 905	1.29	7.38	38.1	2810	3.07	5.57	0.60	2.05	90.3	14.0	19	6.58	1460	4.03	24.3
Target Range - Lower Bound	0.46	6.67	31.0	2280	2.69	5.14	0.52	0.30	82.8	13.2	16	6.05	1425	3.66	22.5
Upper Bound	0.58	8.17	38.4	3110	3.39	6.30	0.66	0.42	101.0	16.4	22	7.51	1640	4.50	27.7
OREAS 920	0.10	7.81	5.4	560	2.62	0.63	0.50	0.05	89.1	14.2	83	8.18	108.0	4.07	19.90
OREAS 920	0.11	7.66	4.9	550	2.54	0.74	0.49	0.06	85.9	14.6	85	8.17	117.0	3.99	19.45
Target Range - Lower Bound	0.08	6.91	4.4	450	2.54	0.61	0.44	0.04	84.6	13.9	70	7.72	104.0	3.72	18.65
Upper Bound	0.13	8.47	5.8	640	3.22	0.77	0.56	0.12	103.5	17.3	88	9.54	120.0	4.56	22.9
BLANKS															
BLANK	<0.01	<0.01	0.2	<10	<0.05	0.01	<0.01	<0.02	0.01	<0.1	<1	<0.05	0.4	<0.01	<0.05
BLANK	0.01	<0.01	<0.2	<10	<0.05	0.01	<0.01	<0.02	<0.01	<0.1	<1	<0.05	0.2	<0.01	<0.05
BLANK	<0.01	<0.01	<0.2	<10	<0.05	0.02	<0.01	<0.02	0.01	<0.1	<1	<0.05	0.3	<0.01	<0.05
Target Range - Lower Bound	<0.01	<0.01	<0.2	<10	<0.05	<0.01	<0.01	<0.02	<0.01	<0.1	<1	<0.05	<0.2	<0.01	<0.05
Upper Bound	0.02	0.02	0.4	20	0.10	0.02	0.02	0.04	0.02	0.2	2	0.10	0.4	0.02	0.10
DUPLICATES															
ORIGINAL	6.61	8.59	6.5	760	2.02	46.3	1.01	0.14	28.7	6.3	74	21.1	6960	1.73	21.1
DUP	6.31	8.76	6.5	760	2.03	46.4	1.04	0.13	29.3	6.5	78	22.3	6840	1.75	21.9
Target Range - Lower Bound	6.13	8.23	6.0	690	1.87	44.0	0.96	0.11	27.5	6.0	71	20.6	6660	1.64	20.4
Upper Bound	6.79	9.12	7.0	830	2.18	48.7	1.09	0.16	30.5	6.8	81	22.8	7140	1.84	22.6
ORIGINAL	1.44	7.32	1.2	630	1.07	0.73	4.95	0.56	61.9	43.5	101	0.78	1050	7.77	18.75
DUP	1.32	7.06	1.3	610	0.91	0.76	4.81	0.55	58.1	41.6	98	0.72	1035	7.57	18.15
Target Range - Lower Bound	1.30	6.82	1.0	560	0.89	0.70	4.63	0.51	57.0	40.3	94	0.66	1005	7.28	17.50
Upper Bound	1.46	7.56	1.5	680	1.09	0.79	5.13	0.60	63.0	44.8	105	0.84	1080	8.06	19.40



ALS Canada Ltd.
 2103 Dollarton Hwy
 North Vancouver BC V7H 0A7
 Phone: +1 (604) 984 0221 Fax: +1 (604) 984 0218
 www.alsglobal.com/geochemistry

To: ROBERT MACGREGOR
 28 FORD STREET
 SAULT STE. MARIE ON P6A 4N4

Page: 2 - B
 Total # Pages: 3 (A - D)
 Plus Appendix Pages
 Finalized Date: 1-NOV-2018
 Account: RMLMUKFU

Project: Robert MacGregor

QC CERTIFICATE OF ANALYSIS SD18262025

Sample Description	Method Analyte Units LOD	ME-MS61	ME-MS61	ME-MS61	ME-MS61	ME-MS61	ME-MS61	ME-MS61	ME-MS61	ME-MS61	ME-MS61	ME-MS61	ME-MS61	ME-MS61	ME-MS61	
		Ge ppm	Hf ppm	In ppm	K %	La ppm	Li ppm	Mg %	Mn ppm	Mo ppm	Na %	Nb ppm	Ni ppm	P ppm	Pb ppm	Rb ppm
STANDARDS																
EMOG-17		0.14	1.8	0.874	1.61	24.3	25.6	0.94	742	1075	1.08	15.1	7280	810	7420	109.5
EMOG-17		0.17	1.9	0.885	1.66	25.8	29.6	0.94	739	1085	1.09	13.8	7520	820	7220	116.0
Target Range - Lower Bound		0.07	1.6	0.823	1.49	20.7	23.9	0.86	670	997	0.99	12.7	6820	700	6570	98.9
Upper Bound		0.29	2.2	1.015	1.85	26.4	29.7	1.08	830	1220	1.23	15.7	8330	880	8030	121.0
MRGeo08		0.12	3.6	0.167	3.15	35.2	34.9	1.30	574	14.50	1.99	21.1	696	1050	1090	181.0
Target Range - Lower Bound		<0.05	2.8	0.155	2.79	31.1	29.5	1.17	497	13.65	1.76	19.0	622	930	971	173.5
Upper Bound		0.27	3.6	0.201	3.43	39.1	36.5	1.45	619	16.75	2.18	23.4	760	1160	1185	212
OREAS 905		0.13	6.8	0.628	2.91	45.4	22.3	0.27	412	3.06	2.43	17.8	8.7	280	35.9	132.5
Target Range - Lower Bound		<0.05	6.1	0.571	2.58	40.9	17.8	0.24	333	2.89	2.15	16.2	8.4		26.9	124.0
Upper Bound		0.27	7.6	0.709	3.18	51.1	22.2	0.31	418	3.65	2.65	20.0	10.7		33.9	152.0
OREAS 920		0.16	4.3	0.074	2.82	44.5	26.6	1.31	598	0.37	0.64	17.8	38.4	750	21.1	171.5
OREAS 920		0.18	4.3	0.081	2.92	42.1	32.0	1.32	583	1.44	0.64	15.4	38.5	750	20.9	165.5
Target Range - Lower Bound		0.06	4.0	0.070	2.59	41.0	26.0	1.23	535	0.34	0.56	15.6	37.4		20.7	158.5
Upper Bound		0.28	5.2	0.098	3.19	51.2	32.2	1.53	665	0.58	0.71	19.2	46.2		26.4	193.5
BLANKS																
BLANK		0.08	<0.1	<0.005	<0.01	<0.5	0.2	<0.01	<5	<0.05	<0.01	<0.1	<0.2	<10	<0.5	<0.1
BLANK		<0.05	<0.1	<0.005	<0.01	<0.5	0.2	<0.01	<5	<0.05	<0.01	<0.1	<0.2	<10	1.0	<0.1
BLANK		<0.05	<0.1	<0.005	<0.01	<0.5	0.2	<0.01	<5	<0.05	<0.01	<0.1	<0.2	<10	0.9	<0.1
Target Range - Lower Bound		<0.05	<0.1	<0.005	<0.01	<0.5	<0.2	<0.01	<5	<0.05	<0.01	<0.1	<0.2	<10	<0.5	<0.1
Upper Bound		0.10	0.2	0.010	0.02	1.0	0.4	0.02	10	0.10	0.02	0.2	0.4	20	1.0	0.2
DUPLICATES																
ORIGINAL		0.13	1.2	0.257	3.59	10.9	18.0	0.36	192	1770	1.92	4.1	4.7	390	23.5	202
DUP		0.13	1.2	0.269	3.57	11.1	17.7	0.36	195	1770	1.93	4.1	4.3	390	24.2	209
Target Range - Lower Bound		0.07	1.0	0.245	3.39	10.0	16.8	0.33	179	1680	1.82	3.8	4.1	360	22.2	195.0
Upper Bound		0.19	1.4	0.281	3.77	12.1	18.9	0.39	208	1860	2.03	4.4	4.9	420	25.5	216
ORIGINAL		0.12	1.7	0.087	1.32	29.7	14.1	3.16	1180	0.81	2.21	5.4	338	1030	31.9	41.7
DUP		0.12	1.6	0.087	1.28	27.6	13.5	3.06	1150	0.68	2.16	5.4	322	990	31.6	36.2
Target Range - Lower Bound		0.06	1.5	0.078	1.23	26.7	12.9	2.94	1100	0.66	2.07	5.0	313	950	29.7	36.9
Upper Bound		0.18	1.8	0.096	1.38	30.6	14.7	3.28	1230	0.83	2.30	5.8	347	1070	33.8	41.0



ALS Canada Ltd.
 2103 Dollarton Hwy
 North Vancouver BC V7H 0A7
 Phone: +1 (604) 984 0221 Fax: +1 (604) 984 0218
 www.alsglobal.com/geochemistry

To: ROBERT MACGREGOR
 28 FORD STREET
 SAULT STE. MARIE ON P6A 4N4

Page: 2 - C
 Total # Pages: 3 (A - D)
 Plus Appendix Pages
 Finalized Date: 1-NOV-2018
 Account: RMLMUKFU

Project: Robert MacGregor

QC CERTIFICATE OF ANALYSIS SD18262025

Sample Description	Method Analyte Units LOD	ME-MS61	ME-MS61	ME-MS61	ME-MS61	ME-MS61	ME-MS61	ME-MS61	ME-MS61	ME-MS61	ME-MS61	ME-MS61	ME-MS61	ME-MS61	ME-MS61	
		Re ppm	S %	Sb ppm	Sc ppm	Se ppm	Sn ppm	Sr ppm	Ta ppm	Te ppm	Th ppm	Ti %	Tl ppm	U ppm	V ppm	W ppm
STANDARDS																
EMOG-17		0.305	3.24	796	7.5	6	2.6	204	0.90	1.33	11.60	0.318	2.18	3.0	74	3.7
EMOG-17		0.313	3.26	790	8.2	6	2.6	209	0.88	1.24	10.95	0.320	2.15	3.2	74	4.1
Target Range - Lower Bound		0.286	2.91	643	7.2	4	2.2	184.5	0.78	1.10	10.35	0.294	1.89	2.8	67	3.3
Upper Bound		0.354	3.57	869	9.0	9	3.2	226	1.08	1.46	12.65	0.370	2.61	3.7	84	4.7
MRGeo08		0.010	0.31	4.22	11.7	1	3.9	308	1.42	<0.05	18.50	0.499	1.09	5.3	110	4.5
Target Range - Lower Bound		0.005	0.27	3.89	11.1	<1	3.5	277	1.39	<0.05	17.90	0.443	0.89	4.9	97	4.1
Upper Bound		0.013	0.35	5.39	13.7	4	4.7	339	1.81	0.14	21.9	0.553	1.25	6.2	121	5.8
OREAS 905		<0.002	0.08	2.37	4.7	2	3.8	160.0	1.21	0.09	13.70	0.120	0.71	4.8	9	3.3
Target Range - Lower Bound		<0.002	0.04	1.61	4.3	<1	3.4	141.0	1.16	<0.05	13.15	0.105	0.59	4.4	8	2.3
Upper Bound		0.004	0.09	2.29	5.5	5	4.6	173.0	1.52	0.19	16.05	0.139	0.85	5.6	13	3.3
OREAS 920		<0.002	0.03	1.57	12.8	<1	4.7	78.1	1.27	<0.05	18.50	0.474	0.86	3.4	97	3.1
OREAS 920		0.002	0.03	1.36	13.1	<1	4.6	80.3	1.18	<0.05	17.45	0.479	0.82	3.6	97	3.4
Target Range - Lower Bound		<0.002	<0.01	1.22	12.8	<1	4.3	73.6	1.08	<0.05	17.35	0.434	0.76	3.3	86	2.5
Upper Bound		0.004	0.05	1.76	15.8	2	5.7	90.4	1.43	0.10	21.2	0.542	1.08	4.2	108	3.7
BLANKS																
BLANK		<0.002	<0.01	0.09	<0.1	<1	<0.2	<0.2	<0.05	<0.05	0.02	<0.005	<0.02	<0.1	<1	<0.1
BLANK		<0.002	<0.01	<0.05	<0.1	<1	<0.2	<0.2	<0.05	<0.05	<0.01	<0.005	<0.02	<0.1	<1	<0.1
BLANK		<0.002	<0.01	<0.05	<0.1	<1	<0.2	<0.2	<0.05	<0.05	0.04	<0.005	<0.02	<0.1	<1	<0.1
Target Range - Lower Bound		<0.002	<0.01	<0.05	<0.1	<1	<0.2	<0.2	<0.05	<0.05	<0.01	<0.005	<0.02	<0.1	<1	<0.1
Upper Bound		0.004	0.02	0.10	0.2	2	0.4	0.4	0.10	0.10	0.02	0.010	0.04	0.2	2	0.2
DUPLICATES																
ORIGINAL		1.105	1.11	1.19	3.0	2	3.4	333	0.32	1.62	6.39	0.183	0.68	2.3	63	42.1
DUP		1.140	1.09	1.22	3.0	3	3.5	336	0.32	1.58	6.42	0.182	0.68	2.3	63	44.3
Target Range - Lower Bound		1.065	1.04	1.06	2.8	<1	3.1	318	0.25	1.47	6.07	0.168	0.61	2.1	59	39.9
Upper Bound		1.180	1.17	1.35	3.3	4	3.8	351	0.39	1.73	6.74	0.197	0.75	2.5	67	46.5
ORIGINAL		0.005	0.35	0.20	25.6	1	1.4	468	0.27	0.24	4.39	0.502	0.27	0.7	207	0.3
DUP		0.002	0.34	0.17	24.6	1	1.3	458	0.27	0.26	3.89	0.493	0.28	0.6	198	0.2
Target Range - Lower Bound		<0.002	0.32	0.12	23.7	<1	1.1	440	0.21	0.19	3.92	0.468	0.23	0.5	191	<0.1
Upper Bound		0.004	0.37	0.25	26.5	2	1.6	486	0.33	0.31	4.36	0.527	0.32	0.8	214	0.4



ALS Canada Ltd.
 2103 Dollarton Hwy
 North Vancouver BC V7H 0A7
 Phone: +1 (604) 984 0221 Fax: +1 (604) 984 0218
 www.alsglobal.com/geochemistry

To: ROBERT MACGREGOR
 28 FORD STREET
 SAULT STE. MARIE ON P6A 4N4

Page: 2 - D
 Total # Pages: 3 (A - D)
 Plus Appendix Pages
 Finalized Date: 1-NOV-2018
 Account: RMLMUKFU

Project: Robert MacGregor

QC CERTIFICATE OF ANALYSIS SD18262025
--

Sample Description	Method Analyte Units LOD	ME-MS61 Y ppm 0.1	ME-MS61 Zn ppm 2	ME-MS61 Zr ppm 0.5
STANDARDS				
EMOG-17		15.6	7360	62.0
EMOG-17		15.4	7420	64.7
Target Range - Lower Bound		14.3	6800	55.6
Upper Bound		17.7	8320	76.4
MGeo08		26.3	816	109.5
Target Range - Lower Bound		23.8	722	92.2
Upper Bound		29.3	886	126.0
OREAS 905		15.5	411	251
Target Range - Lower Bound		14.0	122	214
Upper Bound		17.4	154	290
OREAS 920		32.0	121	156.0
OREAS 920		30.8	118	148.5
Target Range - Lower Bound		29.8	102	128.0
Upper Bound		36.6	130	174.0
BLANKS				
BLANK		<0.1	<2	<0.5
BLANK		<0.1	<2	<0.5
BLANK		<0.1	<2	<0.5
Target Range - Lower Bound		<0.1	<2	<0.5
Upper Bound		0.2	4	1.0
DUPLICATES				
ORIGINAL		3.4	38	25.4
DUP		3.5	37	25.7
Target Range - Lower Bound		3.2	34	23.1
Upper Bound		3.7	41	28.0
ORIGINAL		19.2	123	53.3
DUP		18.4	120	49.5
Target Range - Lower Bound		17.8	113	47.0
Upper Bound		19.8	130	55.8

***** See Appendix Page for comments regarding this certificate *****



ALS Canada Ltd.
 2103 Dollarton Hwy
 North Vancouver BC V7H 0A7
 Phone: +1 (604) 984 0221 Fax: +1 (604) 984 0218
 www.alsglobal.com/geochemistry

To: **ROBERT MACGREGOR**
28 FORD STREET
SAULT STE. MARIE ON P6A 4N4

Page: 3 - A
 Total # Pages: 3 (A - D)
 Plus Appendix Pages
 Finalized Date: 1-NOV-2018
 Account: RMLMUKFU

Project: Robert MacGregor

QC CERTIFICATE OF ANALYSIS SD18262025
--

Sample Description	Method	MS61	MS61	MS61	MS61	MS61	MS61	MS61	MS61	MS61	MS61	MS61	MS61	MS61	MS61	
	Analyte	Ag	Al	As	Ba	Be	Bi	Ca	Cd	Ce	Co	Cr	Cs	Cu	Fe	Ga
	Units	ppm	%	ppm	ppm	ppm	ppm	%	ppm	ppm	ppm	ppm	ppm	ppm	%	ppm
	LOD	0.01	0.01	0.2	10	0.05	0.01	0.01	0.02	0.01	0.1	1	0.05	0.2	0.01	0.05
DUPLICATES																
ORIGINAL		11.55	8.30	42.9	540	1.35	0.10	0.42	22.1	36.0	11.2	13	3.72	55.4	4.41	15.50
DUP		11.30	7.97	42.5	520	1.37	0.16	0.42	21.9	36.9	11.4	12	3.77	55.0	4.23	15.50
Target Range - Lower Bound		10.85	7.72	40.4	480	1.24	0.11	0.39	20.9	34.6	10.6	11	3.51	53.1	4.09	14.70
Upper Bound		12.00	8.55	45.0	580	1.48	0.15	0.45	23.1	38.3	12.0	14	3.98	57.3	4.55	16.35

***** See Appendix Page for comments regarding this certificate *****



ALS Canada Ltd.
 2103 Dollarton Hwy
 North Vancouver BC V7H 0A7
 Phone: +1 (604) 984 0221 Fax: +1 (604) 984 0218
 www.alsglobal.com/geochemistry

To: **ROBERT MACGREGOR**
28 FORD STREET
SAULT STE. MARIE ON P6A 4N4

Page: 3 - B
 Total # Pages: 3 (A - D)
 Plus Appendix Pages
 Finalized Date: 1-NOV-2018
 Account: RMLMUKFU

Project: Robert MacGregor

QC CERTIFICATE OF ANALYSIS SD18262025
--

Sample Description	Method	MS61	MS61	MS61	MS61	MS61	MS61	MS61	MS61	MS61	MS61	MS61	MS61	MS61	MS61	
	Analyte	Ge	Hf	In	K	La	Li	Mg	Mn	Mo	Na	Nb	Ni	P	Pb	Rb
	Units	ppm	ppm	ppm	%	ppm	ppm	%	ppm	ppm	%	ppm	ppm	ppm	ppm	ppm
	LOD	0.05	0.1	0.005	0.01	0.5	0.2	0.01	5	0.05	0.01	0.1	0.2	10	0.5	0.1
DUPLICATES																
ORIGINAL		0.11	1.5	0.033	4.74	20.1	10.4	0.51	16200	3.43	0.08	6.8	4.1	890	1450	159.5
DUP		0.09	1.8	0.034	4.52	20.3	9.9	0.50	15600	3.50	0.08	6.8	4.1	850	1390	157.5
Target Range - Lower Bound		<0.05	1.5	0.027	4.39	18.7	9.4	0.47	15100	3.24	0.07	6.4	3.7	820	1350	150.5
Upper Bound		0.16	1.8	0.040	4.87	21.7	10.9	0.54	16700	3.69	0.09	7.2	4.5	920	1490	166.5

***** See Appendix Page for comments regarding this certificate *****



ALS Canada Ltd.
 2103 Dollarton Hwy
 North Vancouver BC V7H 0A7
 Phone: +1 (604) 984 0221 Fax: +1 (604) 984 0218
 www.alsglobal.com/geochemistry

To: **ROBERT MACGREGOR**
28 FORD STREET
SAULT STE. MARIE ON P6A 4N4

Page: 3 - C
 Total # Pages: 3 (A - D)
 Plus Appendix Pages
 Finalized Date: 1-NOV-2018
 Account: RMLMUKFU

Project: Robert MacGregor

QC CERTIFICATE OF ANALYSIS SD18262025
--

Sample Description	Method	MS61	MS61	MS61	MS61	MS61	MS61	MS61	MS61	MS61	MS61	MS61	MS61	MS61	MS61	
	Analyte	Re	S	Sb	Sc	Se	Sn	Sr	Ta	Te	Th	Ti	Tl	U	V	W
	Units	ppm	%	ppm	ppm	ppm	ppm	ppm	ppm	ppm	ppm	%	ppm	ppm	ppm	ppm
	LOD	0.002	0.01	0.05	0.1	1	0.2	0.2	0.05	0.05	0.01	0.005	0.02	0.1	1	0.1
DUPLICATES																
ORIGINAL		<0.002	0.08	14.80	12.1	<1	1.2	113.0	0.45	<0.05	5.69	0.301	1.14	2.5	121	12.6
DUP		0.002	0.07	14.35	12.1	<1	1.2	112.0	0.46	<0.05	6.41	0.294	1.17	2.6	115	12.4
Target Range - Lower Bound		<0.002	0.06	13.45	11.4	<1	0.9	106.5	0.38	<0.05	5.74	0.278	1.05	2.3	111	11.5
Upper Bound		0.004	0.09	15.70	12.8	2	1.5	118.5	0.53	0.10	6.36	0.317	1.26	2.8	125	13.5

***** See Appendix Page for comments regarding this certificate *****



ALS Canada Ltd.
 2103 Dollarton Hwy
 North Vancouver BC V7H 0A7
 Phone: +1 (604) 984 0221 Fax: +1 (604) 984 0218
 www.alsglobal.com/geochemistry

To: **ROBERT MACGREGOR**
28 FORD STREET
SAULT STE. MARIE ON P6A 4N4

Page: 3 - D
 Total # Pages: 3 (A - D)
 Plus Appendix Pages
 Finalized Date: 1-NOV-2018
 Account: RMLMUKFU

Project: Robert MacGregor

QC CERTIFICATE OF ANALYSIS SD18262025
--

Sample Description	Method Analyte Units LOD	ME-MS61 Y ppm 0.1	ME-MS61 Zn ppm 2	ME-MS61 Zr ppm 0.5
DUPLICATES				
ORIGINAL		10.3	1880	55.9
DUP		10.8	1780	61.1
Target Range - Lower Bound		9.9	1735	53.6
Upper Bound		11.2	1925	63.4



ALS Canada Ltd.
2103 Dollarton Hwy
North Vancouver BC V7H 0A7
Phone: +1 (604) 984 0221 Fax: +1 (604) 984 0218
www.alsglobal.com/geochemistry

To: **ROBERT MACGREGOR**
28 FORD STREET
SAULT STE. MARIE ON P6A 4N4

Page: **Appendix 1**
Total # Appendix Pages: **1**
Finalized Date: **1-NOV-2018**
Account: **RMLMUKFU**

Project: Robert MacGregor

QC CERTIFICATE OF ANALYSIS SD18262025

CERTIFICATE COMMENTS

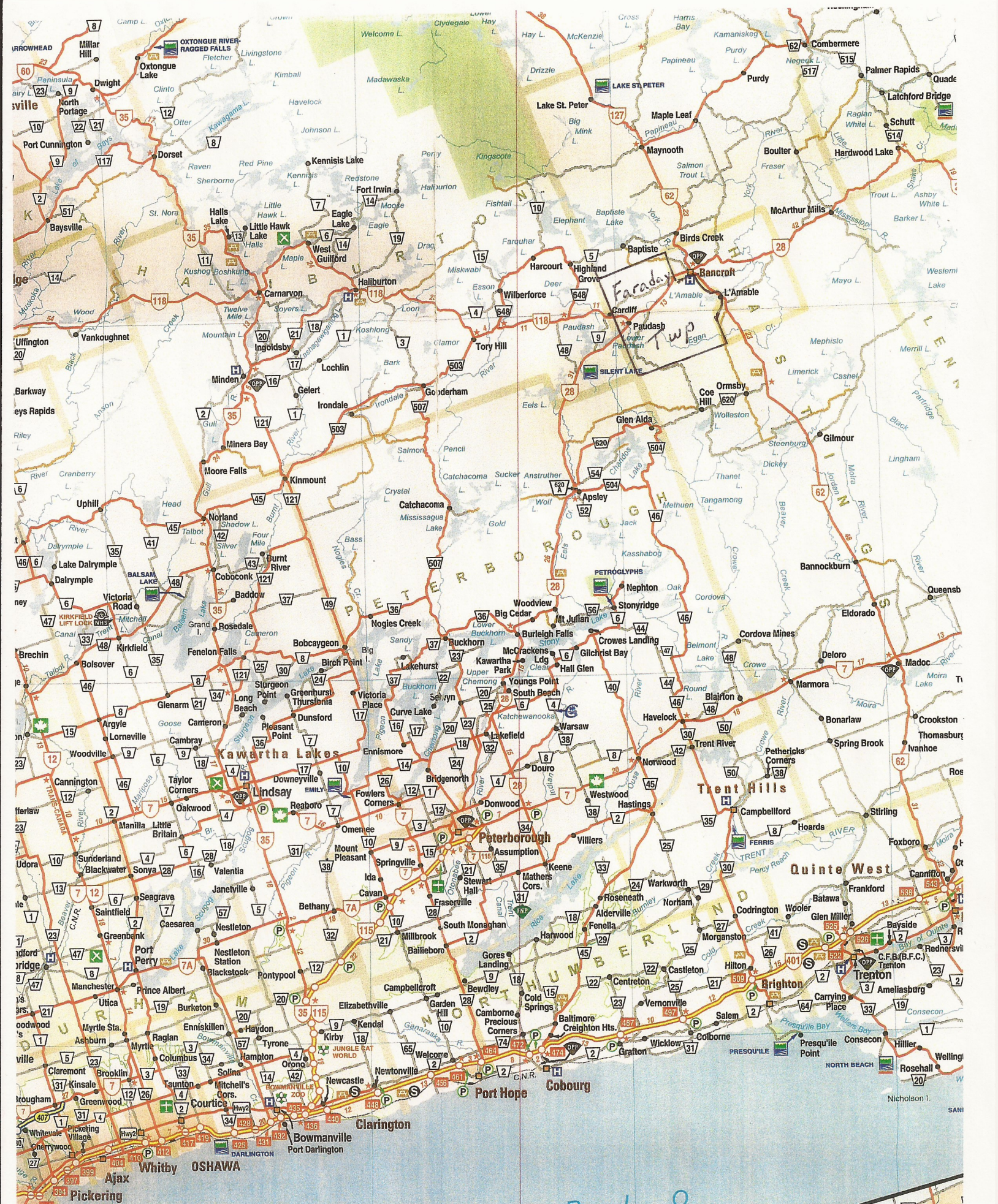
ANALYTICAL COMMENTS

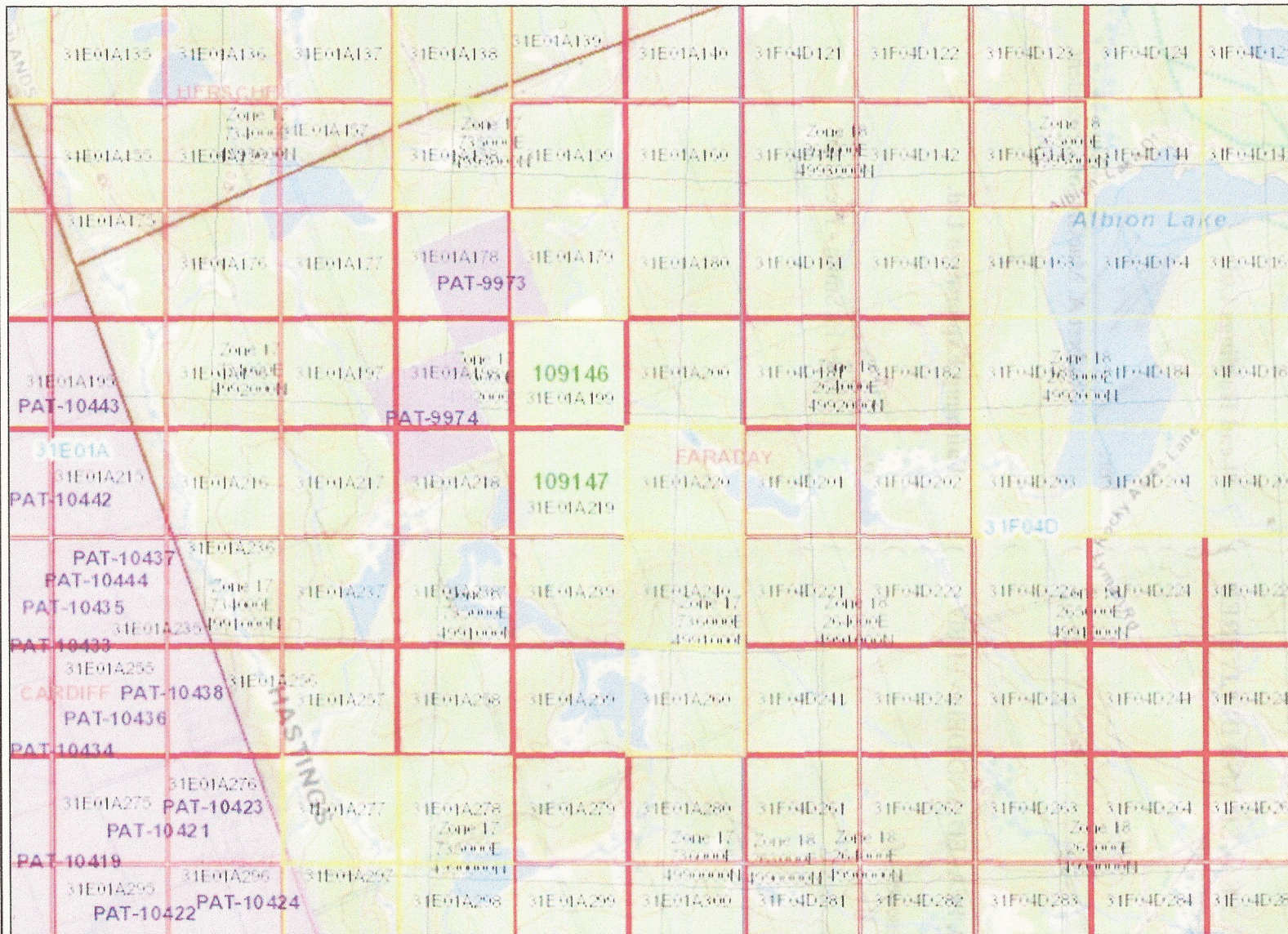
Applies to Method: REE's may not be totally soluble in this method.
ME-MS61

LABORATORY ADDRESSES

Applies to Method: Processed at ALS Sudbury located at 1351-B Kelly Lake Road, Unit #1, Sudbury, ON, Canada.
CRU-31 CRU-QC LOG-22 PUL-31
PUL-QC SPL-21 WEI-21

Applies to Method: Processed at ALS Vancouver located at 2103 Dollarton Hwy, North Vancouver, BC, Canada.
ME-MS61





Legend

Provincial Grid Cell

- Available
- Pending
- Unavailable

Mining Claim

Mining Lease

- Surface Rights Only
- Mining Rights Only
- Surface and Mining Rights

Mining Licence of Occupation

- Surface Rights Only
- Mining Rights Only
- Surface and Mining Rights

Mining Patent

- Surface Rights Only
- Mining Rights Only
- Surface and Mining Rights

Mining Division

MNDM Townships and Areas

Provincial Grid Group

Alienation

- Withdrawal
- Notice

UTM Grid Labels 1K

UTM Grid 1K

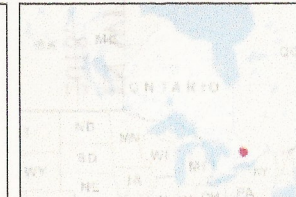


Projection: Web Mercator



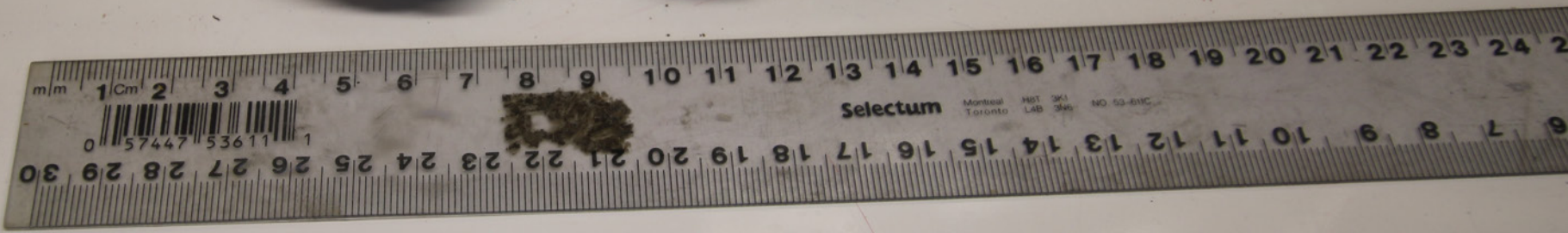
The Ontario Ministry of Northern Development and Mines shall not be liable in any way for the use of, or reliance upon, this map or any information on this map. This map should not be used for: navigation, a plan of survey, routes, nor locations.

Imagery Copyright Notices: Ontario Ministry of Natural Resources and Forestry; NASA Landsat Program; First Base Solutions Inc.; Aéro-Photo (1961) Inc.; DigitalGlobe Inc.; U.S. Geological Survey.





N580009



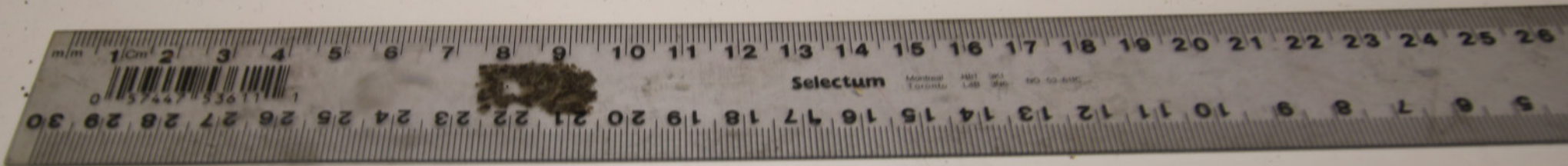
N580009



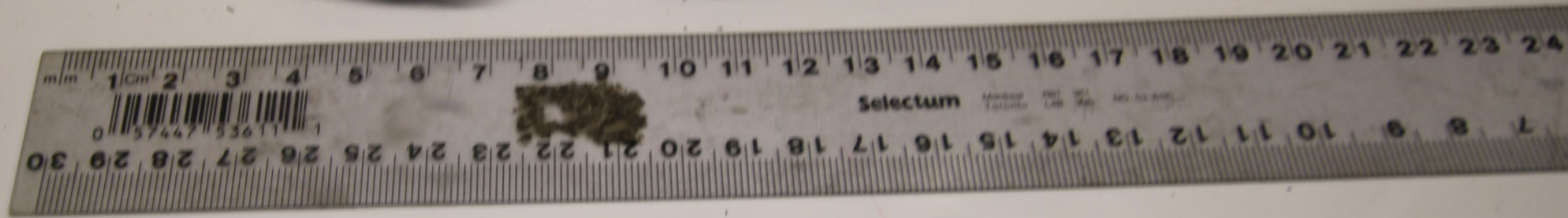
SC2-10



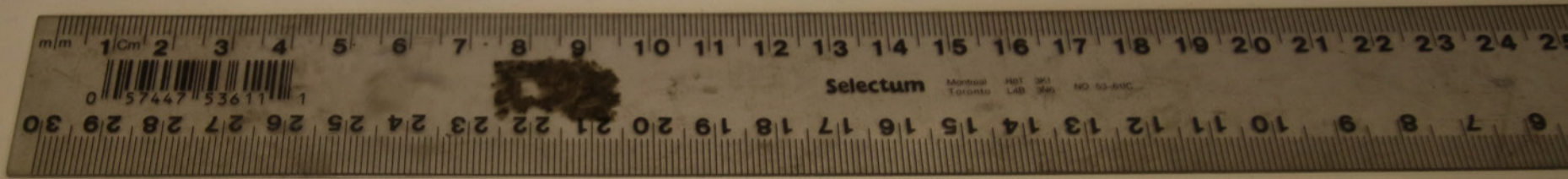
SC2-11



SC2-12



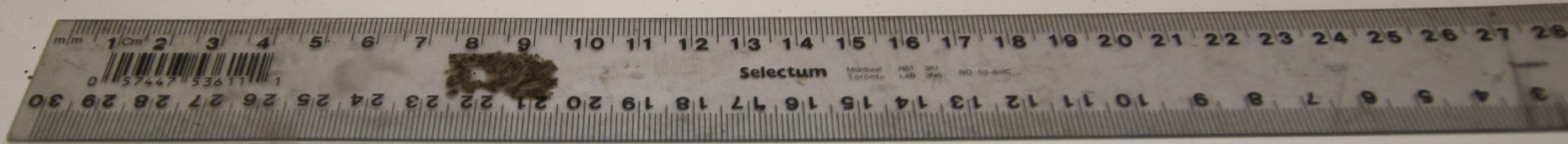
SC2-13



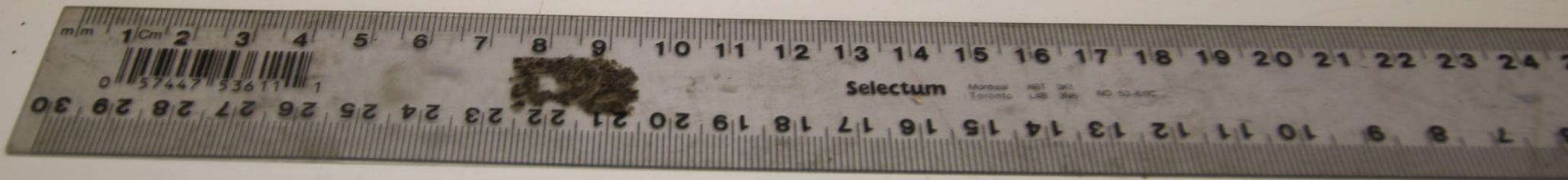
SC2-14



SC2-14



SC2-15



SC2-17