

We are committed to providing [accessible customer service](#).

If you need accessible formats or communications supports, please [contact us](#).

Nous tenons à améliorer [l'accessibilité des services à la clientèle](#).

Si vous avez besoin de formats accessibles ou d'aide à la communication, veuillez [nous contacter](#).

2017 work report for claim# 4267978 and 4282608 of the Anderson Lake Molybdenum property.

The claim group is located 51km east of Thunder Bay in Mctavish Township. Access is Off the East loon road 1.5 km to a small ATV road that leads through the claim group ending at Wideman Lake.

July 3rd 2017

On July 3rd 2017 Allan Onchulenko, Ben Kuzmich and I left town at 730 am and traveled the 51 km to the East Loon road where we started the 1.1 trek up to the south edge of claim #4282608. The goal for the day was to prospect the area that Ben Kuzmich and I had made a number of new Molybdenum discoveries in Dec of 2015. As we had initially discovered these in early December there was some snow and ice and the new showings never got prospected very well. We were able to confirm and expand both showing and made two more new Molybdenum discoveries both also hosted in quartz pegmatite in granite pegmatite rock.

The first showing starts at 16 U 370388 5391169 and we were able to expand it over 6 meters to 16 U 370393 5391172. The showing is hosted in granite pegmatite and is in an exposed rock face containing rusty quartz pegmatite. The face is hosted in a north east trending valley about 35 meters deep and 80meters across. The rock face is 1 to 2 meters tall nearly vertical, sloping back to the North West on the side of a large hill. The molly is numerous 1 to 2cm blotches that seem to be on the surface as well as in the rock as far as we could break in. We did not assay any of the rocks but from past experience I'm sure we could easily get 1 to 2% molly samples.

The second showing is about 30 meters north east up the valley at 16 U 370417 5391191 and is hosted in quartz pegmatite vein about 35cm wide and can be traced back to the north west up the hill for about 5 meter to 16 U 370414 5391195. The Molly here is 1 to 3 cm blotches throughout the quartz. At the top end the vein disappears under over burden with large birch trees. Once again we did not sample the rocks but could easily get 1 to 2% percent Molybdenum. We did take some pictures.

About 40m to the north east in the same valley we made another new discovery of molybdenum at 16 U 370454 5391201. This one was also in quartz pegmatite hosted in granite pegmatite in a rock face with numerous blotches and narrow veins of quartz. Here we could not break in to the rock as it was very solid and only observed a few 1cm blotches of molybdenum. We did not sample here either.

At this point the valley goes more to starts to go more to the north and about 260 m to the nne we made another discovery of molybdenum at 16 U 370556 5391441. We called this one the Short Vein as it was only exposed for about a meter and was 10 to 25 cm wide vein trending north west on the side of he hill. It was numerous 1 to 2cm blotches in rusty quartz hosted in granite pegmatite. We did not sample here but once again could have easily gotten 1 to 2% molybdenum.

From here we reached the east boundary of the claim and worked our way back to the quads at slightly different levels than the initial traverse. Only in one spot did we observe any other rock than the granite pegmatite and this was in the floor of the valley at 16 U 370592 5391370 and we observed grey wacke sedimentary rocks in outcrop.

We are pretty excited for this area as we now have made at least 7 new discoveries of molybdenum over a 970m long north east trending valley/fault. Three of which have already been verified by the MNDM through property visits.

I am including a few maps showing the tracks for the day with the new showings marked on it. I am also including a few pictures of the new showings and the co ordinates for them.

For July 3rd 2017 I am claiming one work day for three people for a total of \$1500 and 102 km travel for \$51 for a grand total of \$1551

September 30th 2017.

On September 30th 2017 Allan Onchulenko and I left Thunder Bay at 7:15 am and drove the 51 km to the East Loon road where we started the 4km quad ride up to claim # 4267978. We spent the day in the top North East section of the claim as we had never prospected up in this area of the claim yet. We spent over an hour stripping off an outcrop of quartz pegmatite at 16 U 370529 5393356 and marked on the map as "NEWPEGMATITE" "and although it looked good we did not find any mineralization. Although we did not find any new Molybdenum showings we did find and map allot of Quartz veining and quartz pegmatite outcropping that would be prime for hosting molybdenum. I feel with more time we would be able to come up with better results in this area. We also found a drill hole collar at 16 U 370513 5393063 and marked on the map as 'PEGQZ25 DRILLHOLE'. The Drill hole was in a quartz pegmatite with no mineralization observed. I have included a map outlying the tracks of our traverse and marked the areas where we found quartz and quartz pegmatite along the way. I believe we took close to 40 waypoints along the route. I will enclose the coordinates for all the waypoints also. The waypoints were named to describe the type of outcrop.

Peg= pegmatite

Pegqz=pegmatite quartz

Pegqzvein=quartz vein in the quartz pegmatite

Gr= granite

Granpeg=granite pegmatite

Sed or sed= sedimentary rock which in all cases was Grey Wacke.

No samples were collected on this day.

I am including a few maps showing the tracks for the day with all the types of bedrock observed along the way that I marked on the map. I am also including a photo of an outcrop we stripped off at 16 U 370529 5393356 marked on the map as NEWPEGMATITE.

I am also including waypoint co ordinates for each spot marked on the map.

For September 30th 2017 I am claiming one work day for two people for a total of \$1000 and 102 km travel for \$51 for a grand total of \$1051.

I am also claiming 1 days of work for creating this report \$500.

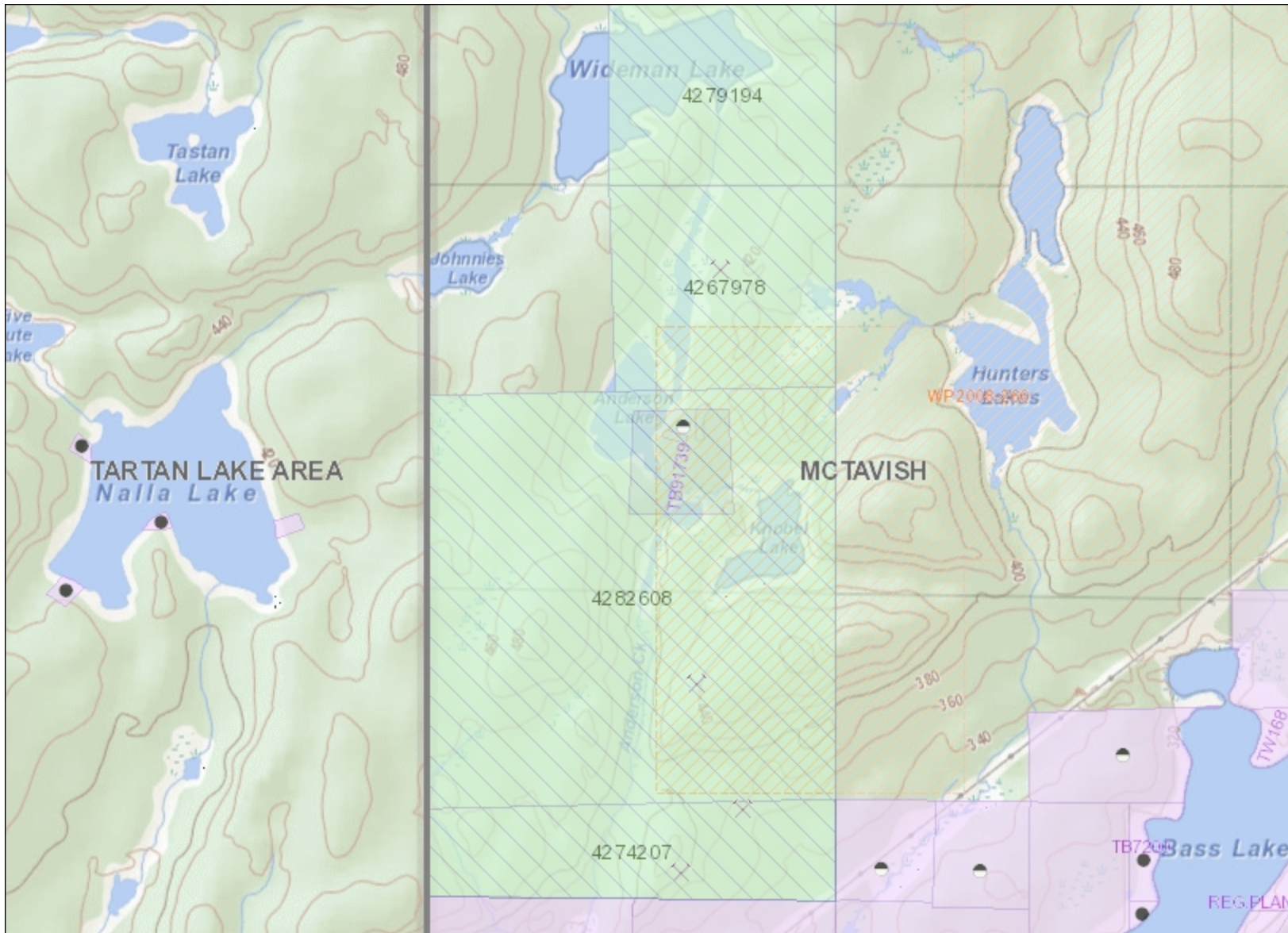
Totals for 2017 work season.

July 3rd 2017- \$1551

Sept 30th 2017-\$1051

Report Creation.-\$500

Total \$3102



Legend

- Administration Boundaries**
 - Mining Divisions
 - Resident Geologist District
 - Townships and Areas
 - UTM Grid
 - Geographic Lot Fabric
 - Other Federal Land
- Mineral Tenure Grid**
 - OMTG Tenure Grid
- Alienations**
 - Withdrawal
 - Notice
- Unpatented Claim**
 - Active
 - Reconciled
 - Pending
- Disposition**
 - Disposition
- Disposition Symbols**
 - Camp
 - Disposition Unknown/Pending
 - Freehold Patent Mining Rights Only
 - Freehold Patent Surface Rights Only
 - Freehold Patent Surface and Mining Rights
 - Land Use Permit
 - Leasehold Patent Mining Rights Only
 - Leasehold Patent Surface Rights Only
 - Leasehold Patent Surface and Mining Rights
 - License of Occupation Mining Use Only
 - License of Occupation Surface Use Only
 - License of Occupation Surface and Mining Rights
 - License of Occupation Uses Not Specified
 - Order in Council
 - Tower
 - WPLA
- Geology Layers**
 - AMIS Sites
 - AMIS Features
 - Drill Holes
 - Mineral Occurrences



Projection: Web Mercator



The Ontario Ministry of Northern Development and Mines shall not be liable in any way for the use of, or reliance upon, this map or any information on this map. This map should not be used for: navigation, a plan of survey, routes, nor locations.

© Queen's Printer for Ontario, 2016

Imagery Copyright Notices: Ontario Ministry of Natural Resources and Forestry; NASA Landsat Program; First Base Solutions Inc.; Aéro-Photo (1961) Inc.; DigitalGlobe Inc.; U.S. Geological Survey.

© Copyright for Ontario Parcel data is held by Queen's Printer for Ontario and its licensors and may not be reproduced without permission.



4282608 july 3rd 2017 tracks

Write a description for your map.

Legend

- ▲ 2017-07-03 ADERSONSOTH
- AMETHYST
- MOLYBDENUM
- MOLYBDENUM

Ontario Geological Survey

037

038

20170703MOSHORTVEINNEW

greywaake

20170703SHOWIN02

20170703NEWEFOR17

MO0512152

3POSTT

ANDES01

Google Earth

©2017 Google

2017-07-03 ADERSONSOTH



4282608 july 3rd 2017 tracks

Write a description for your map.

Legend

- ▲ 2017-07-03 ADERSONSOTH
- AMETHYST
- MOLYBDENUM
- MOLYBDENUM

Ontario Geological Survey

20170703SHOWIN02

MO0512152

20170703NEWEFOR17

ENSHOWING 20170703

MO051215

Google Earth

200 m



4282608 July 3rd 2017 tracks

Write a description for your map.

Legend

- ▲ 2017-07-03 ADERSONSOTH
- AMETHYST
- MOLYBDENUM
- MOLYBDENUM

Ontario Geological Survey

20170703MOSHORTVEINNEW

greywaake

20170703NEWEFOR17

Google Earth

© 2017 Google



300 m

4282608 july 3rd 2017 tracks

Write a description for your map.

Legend

- ▲ 2017-07-03 ADERSONSOTH
- AMETHYST
- MOLYBDENUM
- MOLYBDENUM

4282608

Ontario Geological Survey

20170703MOSHORTVEINNEW

greywaake

20170703NEWFOR17

20170703SHOWIN02
MO051215

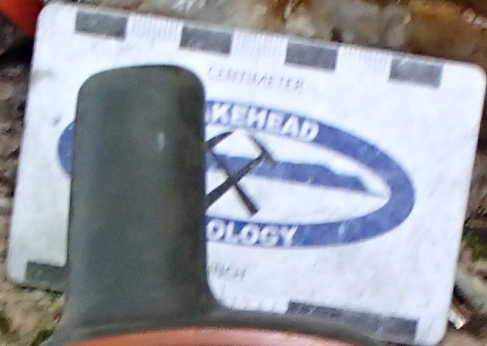
ANDES01

Google Earth

© 2017 Google

1 km

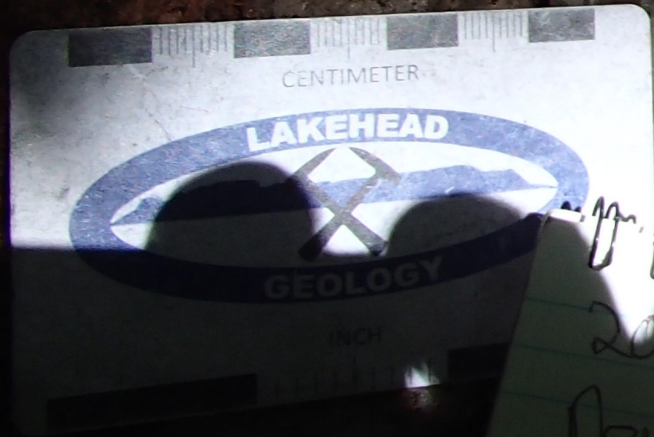




03/07/17
Anderson south
Pens showing!



2013/01/01



2013, 01/01
Bumways may



2013/01/01

SEDSHIGHOUTCROP 16 U 370447 5393340
SED9 16 U 370516 5393345
NEWPEGMATITE 16 U 370529 5393356
PEGQZ1 16 U 370530 5393345
PEGCONTACT 16 U 370570 5393379
PEG5 16 U 370584 5393368
GRANPEG 16 U 370616 5393375
QZPEGVEIN 16 U 370621 5393357
HIGHOUTCROPPEGQZ 16 U 370641 5393346
GRPEG 16 U 370657 5393378
PEGQZ 16 U 370664 5393361
PEGQZHIGHSARPEOC 16 U 370712 5393374
PEGQZ7 16 U 370685 5393331
PEGQZ8 16 U 370653 5393326
PEGQZVEINTREE 16 U 370641 5393311
PEGQZ9 16 U 370634 5393298
PEGQZ10 16 U 370644 5393245
PEGQZ11 16 U 370678 5393224
PEGQZ12 16 U 370673 5393206
SEDS2 16 U 370657 5393182
PEG14 16 U 370650 5393168
PEGQZ15 16 U 370660 5393168
PEGQZ16 16 U 370679 5393183
SED6 16 U 370674 5393152
PEGQZ17 16 U 370644 5393148
PEGQZ18 16 U 370629 5393133
PEGQZ19 16 U 370618 5393124
PEGQZ20 16 U 370609 5393113
PEGQZ21 16 U 370603 5393101
SED7 16 U 370601 5393082
PEGQZ23 16 U 370576 5393090
PEGQZ231 16 U 370563 5393071
PEGQZ26 16 U 370519 5393060
PEGQZ25 DRILLHOLE 16 U 370513 5393063
GR1 16 U 370485 5393132
PEG23 16 U 370491 5393129
PEGQZ27 16 U 370501 5393156
SED8 16 U 370483 5393215
WHITEPEGQZVEIN 16 U 370476 5393269
WHITEPEG 16 U 370504 5393299
WHITEPEG1 16 U 370508 5393318
WPQ 16 U 370516 5393324

4267978 september 30th 2017 tracks

Write a description for your map.

Starting   Legend

Ontario Geological Survey

PEGCONTACT

PEGQZ18

SED6 PEGQZ20

PEGQZ26

037

038

3POSTT

ANDESO1

Google Earth

© 2017 Google

3 km



4267978 september 30th 2017 tracks

Write a description for your map.

4279194

Legend

Ontario Geological Survey

PEGQZ
HIGHOUTCROP PEGQZ
PEGQZ9
PEGQZVEINTREE PEGQZ11
SED8 PEGQZ10
PEGQZ17
PEGQZ19
PEGQZ25 DRILLHOLE

Johnnies Lake

Google Earth

© 2017 Google

Anderson Lake

038

1 km



4267978 september 30th 2017 tracks

Write a description for your map.

Legend

Ontario Geological Survey

Google Earth

© 2017 Google



300 m



4267978 september 30th 2017 tracks

WHITE PEGQZ VEIN

Legend

Ontario Geological Survey

SED8

PEGQZ10

PEGQZ11

PEGQZ12

SEDS2

PEGQZ16

PEGQZ14

PEGQZ15

SED6

PEGQZ27

PEGQZ17

PEGQZ18

PEG23

GR1

PEGQZ19

PEGQZ20

PEGQZ23

PEGQZ21

SED7

PEGQZ231

PEGQZ25 DRILLHOLE

PEGQZ26

Google Earth

100 m

4267978 september 30th 2017 tracks

Legend

Ontario Geological Survey

SEDSHIGHOUTCROP

PEGCONTACT

GRANPEG

GRPEG

PEGQZHIGHS

PEG5

PEGQZ

SED9

QZPEGVEIN

PEGQZ7

PEGQZ1

PEGQZ8

WPQ

WHITEPEG1

PEGQZVEINTREE

PEGQZ9

WHITEPEG

WHITEPEGQZVEIN

PEGQZ10

PEGQZ11

Google Earth

SED8

PEGQZ12

100 m



2017 work report for claim# 315145,140394 and 302348,290279 of the Anderson Lake Molybdenum property.

The claim group is located 51km east of Thunder Bay in Mctavish Township. Access is Off the East loon road 1.5 km to a small ATV road that leads through the claim group ending at Wideman Lake.

July 3rd 2017

On July 3rd 2017 Allan Onchulenko, Ben Kuzmich and I left town at 730 am and traveled the 51 km to the East Loon road where we started the 1.1 trek up to the south edge of claim # 315145and#140394. The goal for the day was to prospect the area that Ben Kuzmich and I had made a number of new Molybdenum discoveries in Dec of 2015. As we had initially discovered these in early December there was some snow and ice and the new showings never got prospected very well. We were able to confirm and expand both showing and made two more new Molybdenum discoveries both also hosted in quartz pegmatite in granite pegmatite rock.

The first showing starts at 16 U 370388 5391169 and we were able to expand it over 6 meters to 16 U 370393 5391172. The showing is hosted in granite pegmatite and is in an exposed rock face containing rusty quartz pegmatite. The face is hosted in a north east trending valley about 35 meters deep and 80meters across. The rock face is 1 to 2 meters tall nearly vertical, sloping back to the North West on the side of a large hill. The molly is numerous 1 to 2cm blotches that seem to be on the surface as well as in the rock as far as we could break in. We did not assay any of the rocks but from past experience I'm sure we could easily get 1 to 2% molly samples.

The second showing is about 30 meters north east up the valley at 16 U 370417 5391191 and is hosted in quartz pegmatite vein about 35cm wide and can be traced back to the north west up the hill for about 5 meter to 16 U 370414 5391195. The Molly here is 1 to 3 cm blotches throughout the quartz. At the top end the vein disappears under over burden with large birch trees. Once again we did not sample the rocks but could easily get 1 to 2% percent Molybdenum. We did take some pictures.

About 40m to the north east in the same valley we made another new discovery of molybdenum at 16 U 370454 5391201. This one was also in quartz pegmatite hosted in granite pegmatite in a rock face with numerous blotches and narrow veins of quartz. Here we could not break in to the rock as it was very solid and only observed a few 1cm blotches of molybdenum. We did not sample here either.

At this point the valley goes more to starts to go more to the north and about 260 m to the nne we made another discovery of molybdenum at 16 U 370556 5391441. We called this one the Short Vein as it was only exposed for about a meter and was 10 to 25 cm wide vein trending north west on the side of he hill. It was numerous 1 to 2cm blotches in rusty quartz hosted in granite pegmatite. We did not sample here but once again could have easily gotten 1 to 2% molybdenum.

From here we reached the east boundary of the claim and worked our way back to the quads at slightly different levels than the initial traverse. Only in one spot did we observe any other rock than the granite pegmatite and this was in the floor of the valley at 16 U 370592 5391370 and we observed grey wacke sedimentary rocks in outcrop.

We are pretty excited for this area as we now have made at least 7 new discoveries of molybdenum over a 970m long north east trending valley/fault. Three of which have already been verified by the MNDM through property visits.

I am including a few maps showing the tracks for the day with the new showings marked on it. I am also including a few pictures of the new showings and the co ordinates for them.

For July 3rd 2017 I am claiming one work day for three people for a total of \$1500 and 102 km travel for \$51 for a grand total of \$1551

September 30th 2017.

On September 30th 2017 Allan Onchulenko and I left Thunder Bay at 7:15 am and drove the 51 km to the East Loon road where we started the 4km quad ride up to claim#302348and#290279. We spent the day in the top North East section of the claim as we had never prospected up in this area of the claim yet. We spent over an hour stripping off an out crop of quartz pegmatite at 16 U 370529 5393356 and marked on the map as" NEWPEGMATITE "and although it looked good we did not find any mineralization. Although we did not find any new Molybdenum showings we did find and map allot of Quartz veining and quartz pegmatite outcropping that would be prime for hosting molybdenum. I feel with more time we would be able to come up with better results in this area. We also found a drill hole collar at 16 U 370513 5393063 and marked on the map as' PEGQZ25 DRILLHOLE'. The Drill hole was in a quartz pegmatite with no mineralization observed. I have included a map outlying the tracks of our traverse and marked the areas where we found quartz and quartz pegmatite along the way. I believe we took close to 40 waypoints along the route. I will enclose the coordinates for all the waypoints also. The waypoints were named to describe the type of outcrop.

Peg= pegmatite

Pegqz=pegmatite quartz

Pegqzvein=quartz vein in the quartz pegmatite

Gr= granite

Granpeg=granite pegmatite

Sed or seds= sedimentary rock which in all cases was Grey Wacke.

No samples were collected on this day.

I am including a few maps showing the tracks for the day with all the types of bedrock observed along the way that I marked on the map. I am also including a photo of an outcrop we stripped off at 16 U 370529 5393356 marked on the map as NEWPEGMATITE.

I am also including waypoint co ordinates for each spot marked on the map.

For September 30th 2017 I am claiming one work day for two people for a total of \$1000 and 102 km travel for \$51 for a grand total of \$1051.

I am also claiming 1 days of work for creating this report \$500.

Totals for 2017 work season.

July 3rd 2017- \$1551

Sept 30th 2017-\$1051

Report Creation.-\$500

Total \$3102



Anderson Sptember 30th 2017

tracks and way points 1

Legend

Starting Location

PEG5
WPQ WHITEPEG
SEDSHIGHOUTCROP
GR1

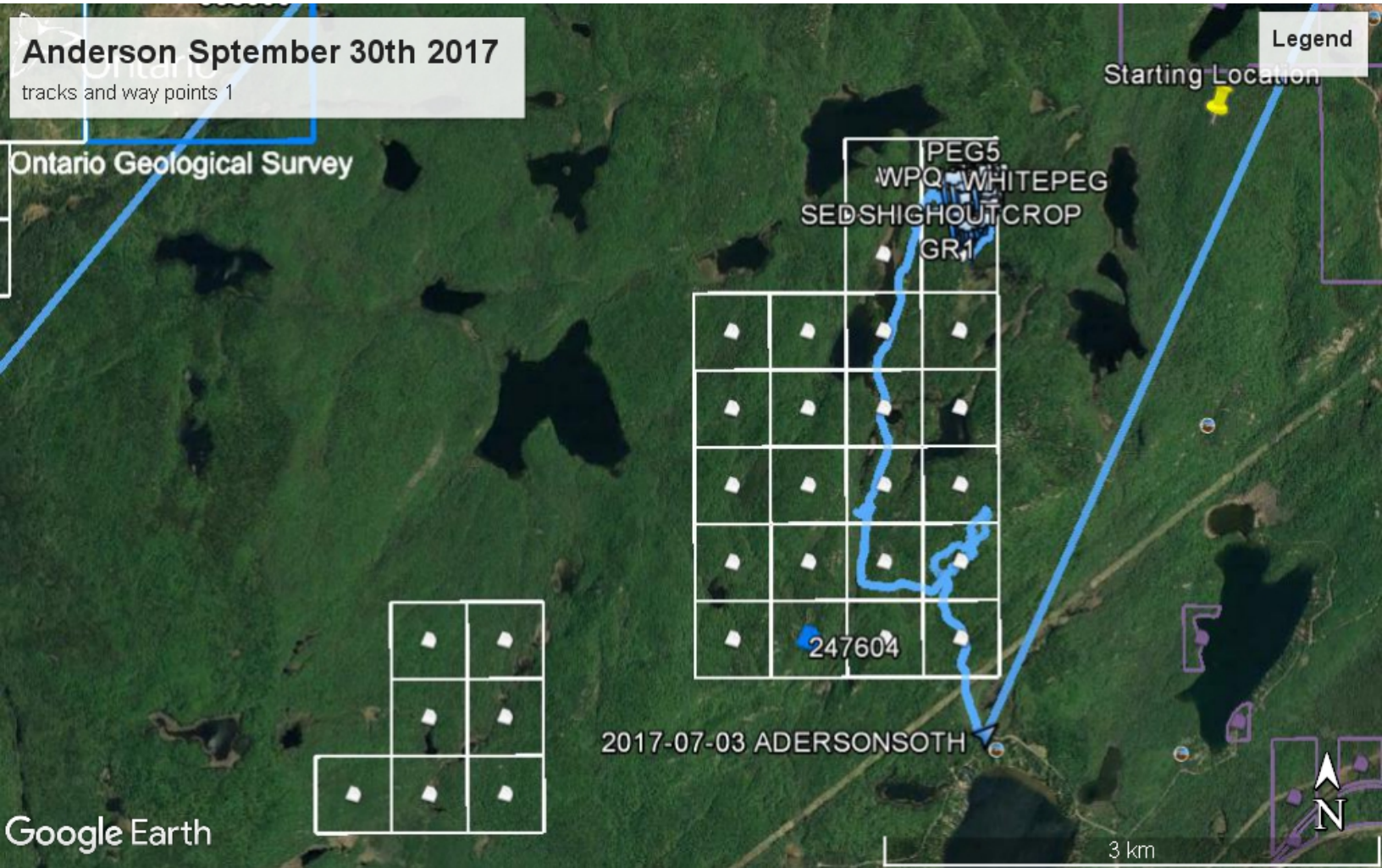
247604

2017-07-03 ADERSONSOTH

Ontario Geological Survey

Google Earth

3 km



Anderson Sptember 30th 2017

tracks and way points 2

Legend

Ontario Geological Survey

302348

PEGCONTACT GRANPEG PEGQZHIGHS
NEWPEGMATITE
SEDHIGHOUTCROP WPO PEGQZ1 PEGQZ9
SED9 WHITEPEG
WHITEPEGQZVEIN PEGQZ11
SED8 PEGQZ10 SEDS2
PEGQZ27 PEGQZ19 PEG14
GR1 PEG23 PEGQZ18
PEGQZ25 DRILLHOLE PEGQZ20
PEGQZ26

Google Earth

500 m



Anderson Sptember 30th 2017

tracks and way points 3

Legend

Ontario Geological Survey

Google Earth



Anderson Sptember 30th 2017

tracks and way points 4

Legend

Ontario Geological Survey

SEDSHIGHOUTCROP

NEWPEGMATITE

PEGCONTACT

PEG5

PEGQZ1

SED9

WPQ

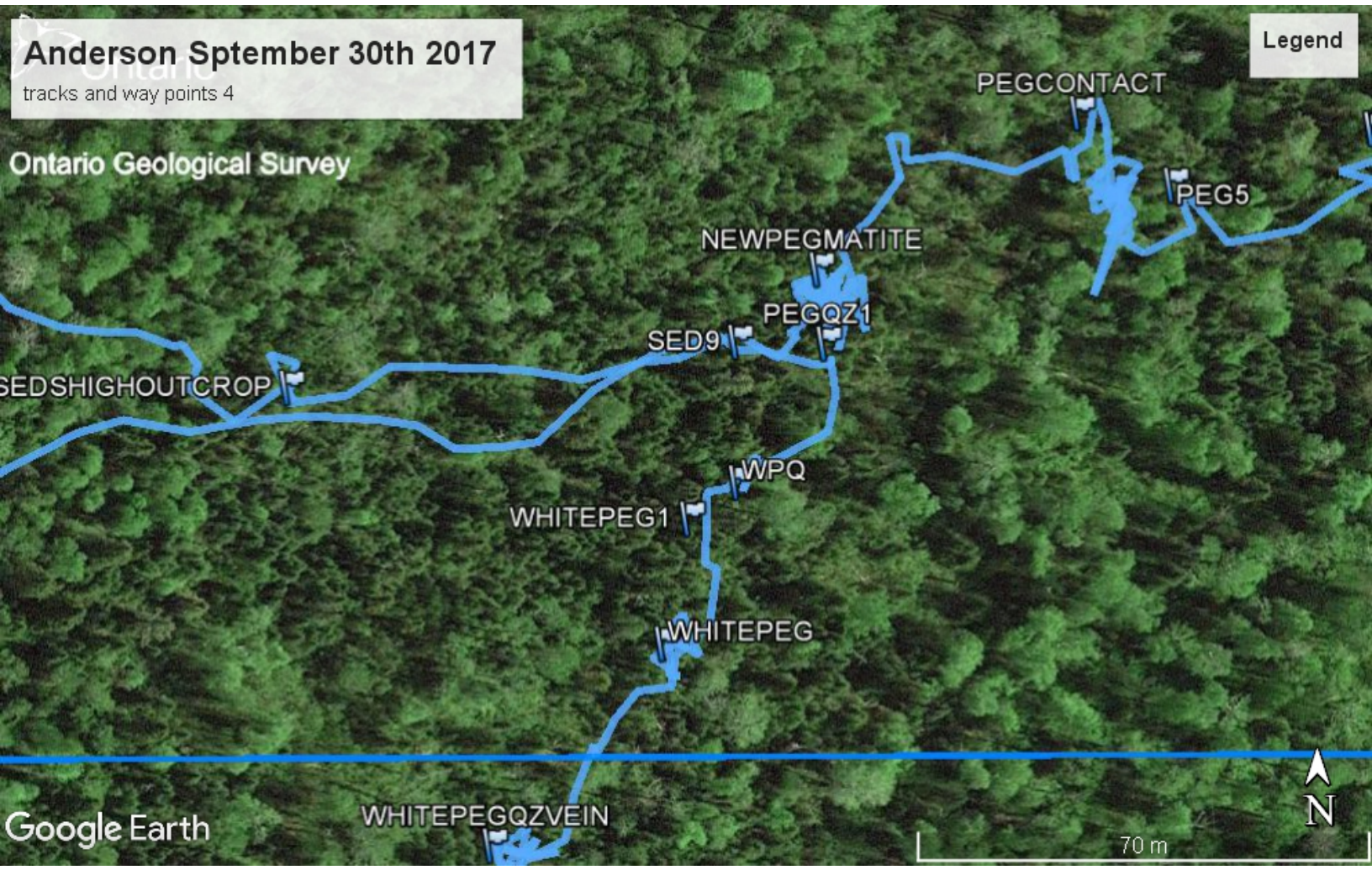
WHITEPEG1

WHITEPEG

WHITEPEGQZVEIN

Google Earth

70 m



Anderson Sptember 30th 2017

tracks and way points5

Legend



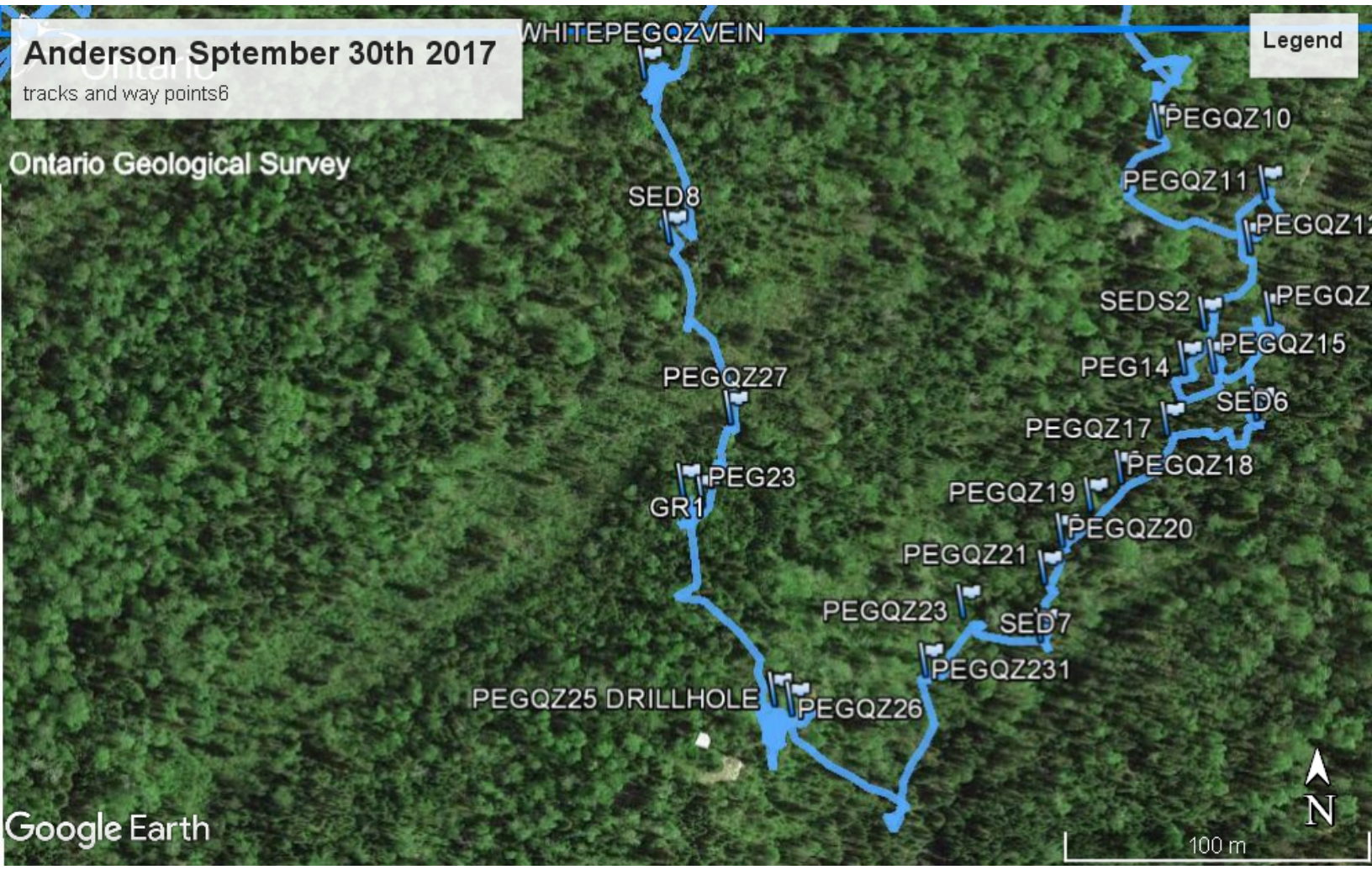
Anderson Sptember 30th 2017

tracks and way points8

WHITEPEGQZVEIN

Legend

Ontario Geological Survey



Google Earth

Anderson July 3rd 2017

overview 1

Ontario Geological Survey

Starting Location

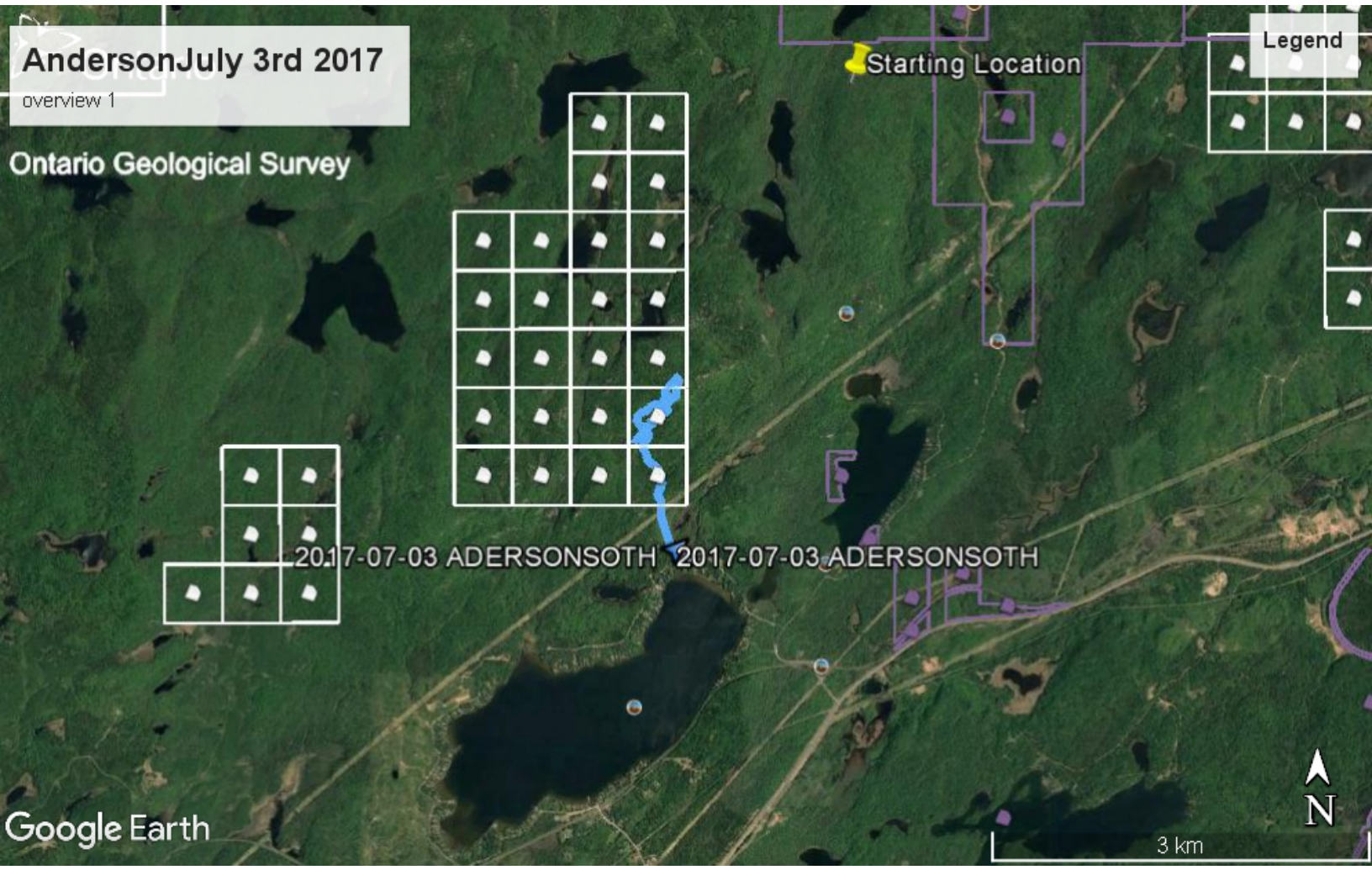
Legend

2017-07-03 ADERSONSOTH 2017-07-03 ADERSONSOTH

Google Earth

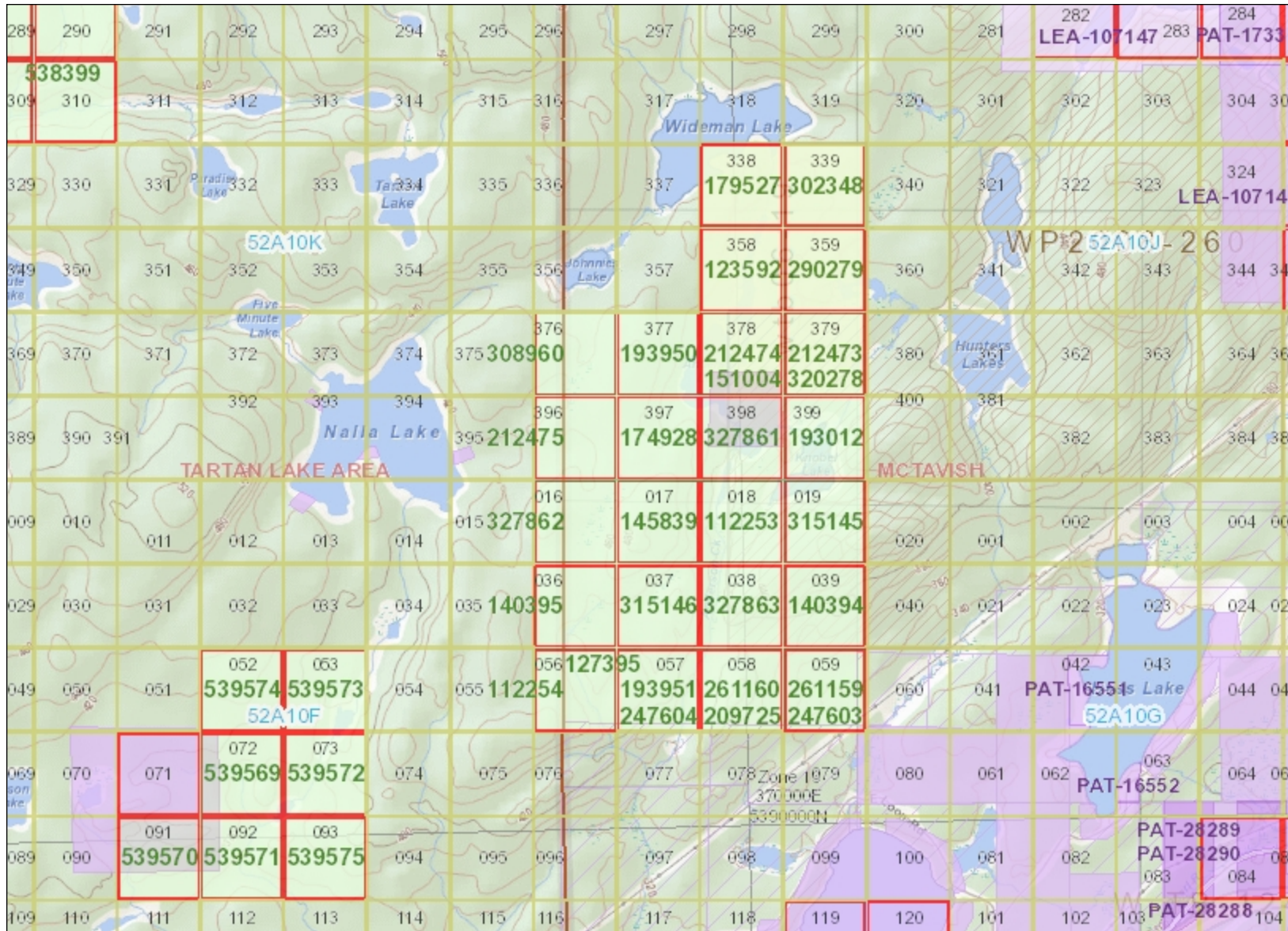


3 km









Legend

Provincial Grid Cell

- Available
- Pending
- Unavailable

Mining Claim

- Mining Claim

Mining Lease

- Surface Rights Only
- Mining Rights Only
- Surface and Mining Rights

Mining Licence of Occupation

- Surface Rights Only
- Mining Rights Only
- Surface and Mining Rights

Mining Patent

- Surface Rights Only
- Mining Rights Only
- Surface and Mining Rights

Mining Division

MNDM Townships and Areas

Provincial Grid Group

Non-Mining Land Tenure

- Patent, Surface Rights Only
- Patent, Mining Rights Only
- Patent, Surface and Mining Rights
- Lease, Surface Rights Only
- Lease, Mining Rights Only
- Lease, Surface and Mining Rights
- Water Power Lease Agreement
- Licence of Occupation, Surface Rights Only



Projection: Web Mercator



The Ontario Ministry of Northern Development and Mines shall not be liable in any way for the use of, or reliance upon, this map or any information on this map. This map should not be used for: navigation, a plan of survey, routes, nor locations.

Imagery Copyright Notices: Ontario Ministry of Natural Resources and Forestry; NASA Landsat Program; First Base Solutions Inc.; Aéro-Photo (1961) Inc.; DigitalGlobe Inc.; U.S. Geological Survey.

