

We are committed to providing [accessible customer service](#).

If you need accessible formats or communications supports, please [contact us](#).

Nous tenons à améliorer [l'accessibilité des services à la clientèle](#).

Si vous avez besoin de formats accessibles ou d'aide à la communication, veuillez [nous contacter](#).

REPORT ON STRIPPING, PROPECTING AND ASSAYS

STREET TOWNSHIP PROPERTY

KUKUGAMI PROJECT

SUDBURY, MINING DIVISION ONTARIO

MINING CLAIMS (OLD NUMBERS) 4265389, 4265390, 4271487, 4271488, 4279044

MINING CLAIMS (NEW NUMBERS)

**136007, 169051, 254680, 152425, 105123, 291889, 136008, 291888,
235864, 235863, 343453, 217838, 235103, 287768, 235102, 174542,
103694, 181204, 127702, 237539, 256199, 336666, 226105, 324288,
142923, 304887, 336132, 182127, 218790, 256196, 136912, 343645,
292737, 304888, 125410, 239450, 239449, 239448, 209576, 227468, and 313509**

Len and Jason Cook

September 2018

TABLE OF CONTENTS

Location, Ownership and Purpose

Dates of stripping and Conclusion

Daily Log

Pictures of Areas That Were Stripped

Assay Results

Maps #1 to #5

Expense Report

LOCATION AND ACCESS

The property is located in east-central Street Township, approximately 20 air-miles (32 km) from the city of Sudbury. Access is via Highway 17 East for a distance of 27 km to the all-weather, Kukagami Lake Road which heads north from the highway. At about 5 km north on the left is an old logging road.

PROPERTY & OWNERSHIP

The property is being explored for industrial minerals, specifically garnet, suitable for use with water jet cutting and other abrasive purposes for which markets exist.

Also, there is a gold showing north east of the property, which lies on a fault running through the middle of the property.

Kukugami Project Map

(Insert Map)



Legend

- Administration Boundaries**
- Mining Divisions
 - Resident Geologist District
 - Townships and Areas
 - UTM Grid
 - Geographic Lot Fabric
 - Other Federal Land
- Mineral Tenure Grid**
- OITTG Tenure Grid
- Alienations**
- Withdrawal
 - Easement
- Unpatented Claim**
- Active
 - Reopened
 - Pending
- Disposition**
- Easement
- Disposition Symbols**
- Comp
 - Disposition Unknown Pending
 - Freehold Patent Mining Rights Only
 - Freehold Patent Surface Rights Only
 - Freehold Patent Surface and Mining Rights
 - Land Use Permit
 - Leasehold Patent Mining Rights Only
 - Leasehold Patent Surface Rights Only
 - Leasehold Patent Surface and Mining Rights
 - License of Occupation Mining Use Only
 - License of Occupation Surface Use Only
 - License of Occupation Surface and Mining Rights
 - License of Occupation Uses Not Specified
 - Order in Council
 - Treaty
 - V.P.L.A.
- Geology Layers**
- AHS Sites
 - AHS Features
 - Drill Holes
 - Mineral Occurrences

0 20.16 km

Projection: Web Mercator

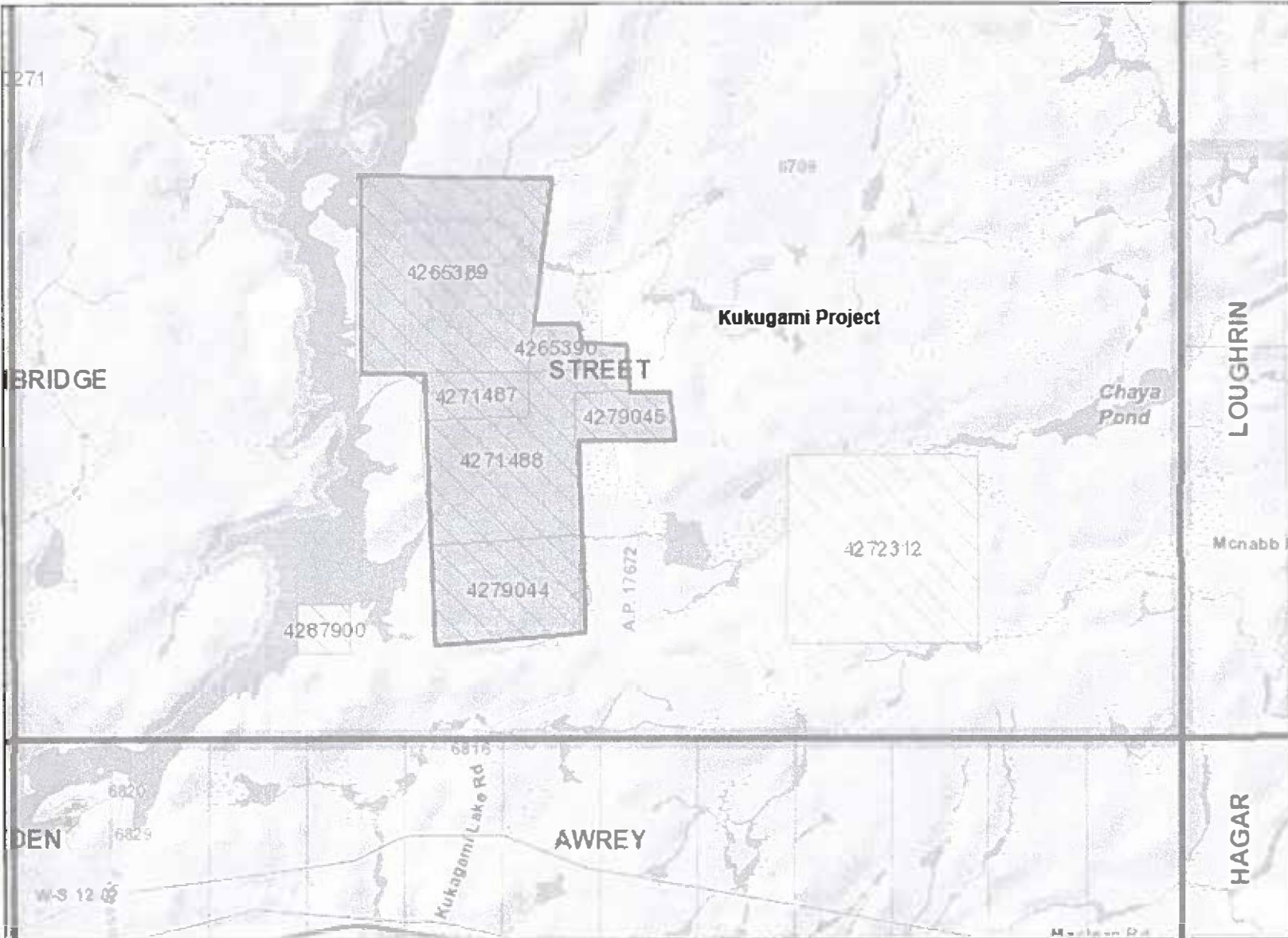
The Ontario Ministry of Northern Development and Mines shall not be liable in any way for the use of, or reliance upon, this map or any information on this map. This map should not be used for: navigation, a plan of survey, routes, nor locations.

© Queen's Printer for Ontario, 2016

Imagery Copyright Notices: Ontario Ministry of Natural Resources and Forestry; NASA Landsat Program; First Base Solutions Inc.; Aéro-Photo (1981) Inc.; DigitalGlobe Inc.; U.S. Geological Survey.

© Copyright for Ontario Parcel data is held by Queen's Printer for Ontario and its licensors and may not be reproduced without permission.

Kukugami Project Map #2



Legend

- Administration Boundaries**
 - Mining Divisions
 - Resident Geologic District
 - Townships and Areas
 - UTM Grid
 - Geographic Lot Fabric
 - Other Federal Land
- Mineral Tenure Grid**
 - OMTG Tenure Grid
- Alienations**
 - Withdrawal
 - Notice
- Unpatented Claim**
 - Active
 - Reopened
 - Pending
- Disposition**
 - Disposition
- Disposition Symbols**
 - Camp
 - Disposition Unknown/Pending
 - Freehold Patent Mining Rights Only
 - Freehold Patent Surface Rights Only
 - Freehold Patent Surface and Mining Rights
 - Land Use Permit
 - Leasehold Patent Mining Rights Only
 - Leasehold Patent Surface Rights Only
 - Leasehold Patent Surface and Mining Rights
 - License of Occupation Mining Use Only
 - License of Occupation Surface Use Only
 - License of Occupation Surface and Mining Rights
 - License of Occupation Uses Not Specified
 - Order in Council
 - Tower
 - WPLA
- Geology Layers**
 - AMIS Sites
 - AMIS Features
 - Drill Holes
 - Mineral Occurrences



Projection: Web Mercator



The Ontario Ministry of Northern Development and Mines shall not be liable in any way for the use of, or reliance upon, this map or any information on this map. This map should not be used for: navigation, a plan of survey, routes, nor locations.

Imagery Copyright Notices: Ontario Ministry of Natural Resources and Forestry; NASA Landsat Program; First Base Solutions Inc.; Aéro-Photo (1961) Inc.; DigitalGlobe Inc.; U.S. Geological Survey.

© Copyright for Ontario Parcel data is held by Queen's Printer for Ontario and its licensors and may not be reproduced without permission.



The claim holders are Leonard and Jason Cook.

PURPOSE FOR PHYSICAL WORK

I am in the process of cutting trails and roadways that will enable me to access claims in order to search for possible garnets. To expose garnets I will strip and wash outcrops.

The fault running through the centre of the claims shows high magnetivity from previous air surveys and there is a showing of sulphur and gold to the northeast, just below the fault line.

The roadway for which I have the permit, is up to 4 meters wide to allow us to bring in a small excavator.

STRIPPING

Hand and mechanical stripping of vegetation and overburden was carried out in order to search for possible garnets or mineralization of the rock on the mining claims. All of the areas stripped needed to be less than 100 square meters for my exploration plans.

DATES OF STRIPPING

March 2017 to September 2018

Labourer- Leonard Cook (at \$250.00/DAY)- 8-hour day

Equipment- J.D. 303.5 (at \$325.00/DAY)

Operator- Jason Cook (at \$300.00/ DAY)- 8-hour day

CONCLUSION

With my stripping, I have found some garnets and quartz with rust and mineralization in the samples taken. I intend to do some trenching in stripping areas # 1 and # 2 to further expose the garnets and mica.

I plan to search to the south and east of the stripped areas to see the size of the garnet zone.

Assessment Work on mining claims

324288, 142923, 174542, 103694, 136912, 343645, 182127, 218790, 125410, 304887, 336132

Leonard Cook
401489
72 Levesque St.
Sudbury, Ontario
705-566-0964

Jason Cook
401585
1446 Vermillion Lake Rd
Chelmsford, Ontario
705-923-9009

DAILY LOG

Mar. 6, 2017

Len Cook and Jason Cook cut trail on claims 304887, 336132, 324288 and 142923 in order to bring in excavator

Mar. 13, 2017

Len Cook and Jason Cook continued to cut trail- refer to "stripping map #1"

Mar. 14, 2017

Len Cook and Jason Cook continued to cut trail

May 4, 2017

Len Cook and Jason Cook continued to cut trail

May 6, 2017

Len Cook and Jason Cook continued to cut trail

May 10, 2017

Len Cook and Jason Cook continued to cut trail

May 11, 2017

Len Cook and Jason Cook finished cutting trail

May 12, 2017

Len Cook and Jason Cook walked claims 182187 and 218790 looking for garnet showing in outcrops- refer to "prospecting Map #1"

Aug. 24, 2017

Len Cook sent in sample from location 17T052081 UTM5155224 for assay. see results of assay in the attachments.

Sept. 14, 2017

Len Cook and Jason Cook walked claims 304887, 336132, 324288, 142923, 174542, 103694 and 136912 looking for garnet showing in outcrops- refer to “prospecting Map #2”

Oct. 10, 2017

Len Cook and Jason Cook do some hand stripping on claim 324288

Oct 15, 2017

Len Cook and Jason Cook find samples containing garnet and do more hand stripping on claim 304887

Nov. 28, 2017

Len Cook and Jason Cook bring in excavator to strip in the areas previously hand stripped.

Nov. 29, 2017

Len Cook and Jason Cook strip in Area 1- refer to “stripping map #2”

Nov. 30, 2017

Len Cook and Jason Cook continue stripping Area #1 and move excavator to Area #2.

Dec. 1, 2017

Len Cook and Jason Cook start to strip Area #2. refer to “stripping Map #3”

Dec. 2, 2017

Len Cook and Jason Cook take excavator out of area.

May 30, 2018

Len Cook and Jason Cook pressure washed Area #1

May 31, 2018

Len Cook and Jason Cook pressure washed Area #2

Picture #1 Stripping Area 2



Picture 2: Samples from Area 2



Picture 3: Clearing of Area 2



Picture 4: Stripping of Area 1



Picture 5: Pressure Washing Area 2



Picture 6: Rock Formations in Area 2



Picture 7: Pressure Washing Area 2



Picture 8: Area 2



Picture 9: Area 2



Assay Results:



ALS Canada Ltd.
 2103 Dollarton Hwy
 North Vancouver BC V7H 0A7
 Phone: +1 (604) 984 0221 Fax: +1 (604) 984 0218
 www.alsglobal.com/geochemistry

To: **LEN COOK**
72 LEVESQUE ST.
SUDBURY ON

Page: 1
 Total # Pages: 2 (A - E)
 Plus Appendix Pages
 Finalized Date: 7-SEP-2017
 Account: LCVEFTYB

CERTIFICATE SD17181071

This report is for 1 Rock sample submitted to our lab in Sudbury, ON, Canada on 24-AUG-2017.

The following have access to data associated with this certificate:

LEN COOK

SAMPLE PREPARATION

ALS CODE	DESCRIPTION
WEI-21	Received Sample Weight
LOG-22	Sample login - Rcd w/o BarCode
CRU-31	Fine crushing - 70% <2mm
CRU-QC	Crushing QC Test
PUL-QC	Pulverizing QC Test
SPL-21	Split sample - riffle splitter
PUL-31	Pulverize split to 85% <75 um

ANALYTICAL PROCEDURES

ALS CODE	DESCRIPTION	INSTRUMENT
ME-MS42	Up to 34 elements by ICP-MS	ICP-MS
OA-GRA05	Loss on Ignition at 1000C	WST-SEQ
TOT-ICP06	Total Calculation for ICP06	ICP-AES
ME-4ACD81	Base Metals by 4-acid dig.	ICP-AES
ME-ICP06	Whole Rock Package - ICP-AES	ICP-AES
C-IR07	Total Carbon (Leco)	LECO
S-IR08	Total Sulphur (Leco)	LECO
ME-MSB1	Lithium Borate Fusion ICP-MS	ICP-MS

To: **LEN COOK**
ATTN: LEN COOK
72 LEVESQUE ST.
SUDBURY ON

This is the Final Report and supersedes any preliminary report with this certificate number. Results apply to samples as submitted. All pages of this report have been checked and approved for release.

***** See Appendix Page for comments regarding this certificate *****

Signature:

Colin Ramshaw, Vancouver Laboratory Manager



ALS Canada Ltd.
 2103 Dollarton Hwy
 North Vancouver BC V7H 0A7
 Phone: +1 (604) 984 0221 Fax: +1 (604) 984 0218
 www.alsglobal.com/geochemistry

To: **LEN COOK**
72 LEVESQUE ST.
SUDBURY ON

Page: 2 - A
 Total # Pages: 2 (A - E)
 Plus Appendix Pages
 Finalized Date: 7-SEP-2017
 Account: LCVEFTYB

CERTIFICATE OF ANALYSIS SD17181071

Sample Description	Method Analyte Units LOR	WE1-21 Recvd Wt. kg	ME-ICP06 SiO2 %	ME-ICP06 Al2O3 %	ME-ICP06 Fe2O3 %	ME-ICP06 CaO %	ME-ICP06 MgO %	ME-ICP06 Na2O %	ME-ICP06 K2O %	ME-ICP06 Cr2O3 %	ME-ICP06 TiO2 %	ME-ICP06 MnO %	ME-ICP06 P2O5 %	ME-ICP06 SrO %	ME-ICP06 BaO %	OA-GRAD5 LOI %
SAMPLE 1		0.02	0.01	0.01	0.01	0.01	0.01	0.01	0.01	0.01	0.01	0.01	0.01	0.01	0.01	0.01
		0.18	54.7	14.40	14.50	7.67	4.81	1.87	1.70	<0.01	0.95	0.22	0.15	0.02	0.05	0.87



ALS Canada Ltd.
 2103 Dollarton Hwy
 North Vancouver BC V7H 0A7
 Phone: +1 (604) 984 0221 Fax: +1 (604) 984 0218
 www.alsglobal.com/geochemistry

TO: LEN COOK
 72 LEVESQUE ST.
 SUDBURY ON

Page: 2 - B
 Total # Pages: 2 (A - E)
 Plus Appendix Pages
 Finalized Date: 7-SEP-2017
 Account: LCVEFTYB

CERTIFICATE OF ANALYSIS SD17181071

Sample Description	Method Analyte Units LOR	TOT-ICP06 Total %	C-IR07 C %	S-IR08 S %	ME-MS81 Ba ppm	ME-MS81 Ca ppm	ME-MS81 Cr ppm	ME-MS81 Cs ppm	ME-MS81 Dy ppm	ME-MS81 Er ppm	ME-MS81 Eu ppm	ME-MS81 Ga ppm	ME-MS81 Gd ppm	ME-MS81 Ge ppm	ME-MS81 Hf ppm	ME-MS81 Ho ppm
SAMPLE 1		101.51	0.05	0.06	403	63.7	10	1.02	7.47	4.85	1.52	22.4	6.73	<5	5.6	1.63



ALS Canada Ltd.
 2103 Dollarton Hwy
 North Vancouver BC V7H 0A7
 Phone: +1 (604) 984 0221 Fax: +1 (604) 984 0218
 www.alsglobal.com/geochemistry

To: LEN COOK
 72 LEVESQUE ST.
 SUDBURY ON

Page: 2 - C
 Total # Pages: 2 (A - E)
 Plus Appendix Pages
 Finalized Date: 7-SEP-2017
 Account: LCVEFTYB

CERTIFICATE OF ANALYSIS SD17181071

Sample Description	Method Analyte Units LOR	ME-MS81 La ppm 0.5	ME-MS81 Lu ppm 0.01	ME-MS81 Nb ppm 0.2	ME-MS81 Nd ppm 0.1	ME-MS81 Pr ppm 0.03	ME-MS81 Rb ppm 0.2	ME-MS81 Sm ppm 0.03	ME-MS81 Sn ppm 1	ME-MS81 Sr ppm 0.1	ME-MS81 Ta ppm 0.1	ME-MS81 Tb ppm 0.01	ME-MS81 Th ppm 0.05	ME-MS81 Tm ppm 0.01	ME-MS81 U ppm 0.05	ME-MS81 V ppm 5
SAMPLE 1		36.2	0.68	12.7	31.2	7.60	57.4	6.59	2	177.5	0.7	1.16	11.20	0.75	2.15	270



ALS Canada Ltd.
 2103 Dollarton Hwy
 North Vancouver BC V7H 0A7
 Phone: +1 (604) 984 0221 Fax: +1 (604) 984 0218
 www.alsglobal.com/geochemistry

To: LEN COOK
 72 LEVESQUE ST.
 SUDBURY ON

Page: 2 - D
 Total # Pages: 2 (A - E)
 Plus Appendix Pages
 Finalized Date: 7-SEP-2017
 Account: LCVEFTYB

CERTIFICATE OF ANALYSIS SD17181071

Sample Description	Method Analyte Units LOR	ME-MS81	ME-MS81	ME-MS81	ME-MS81	ME-MS42	ME-MS42	ME-MS42	ME-MS42	ME-MS42	ME-MS42	ME-MS42	ME-MS42	ME-4ACD81	ME-4ACD81	
		W	Y	Yb	Zr	As	Bi	Hg	In	Re	Sb	Se	Te	Tl	Ag	Cd
		ppm	ppm	ppm	ppm	ppm	ppm	ppm	ppm	ppm	ppm	ppm	ppm	ppm	ppm	ppm
SAMPLE 1		1	40.8	4.39	211	0.5	0.05	<0.005	0.030	<0.001	<0.05	0.2	0.01	0.35	<0.5	0.7

***** See Appendix Page for comments regarding this certificate *****



ALS Canada Ltd.
 2103 Dollarton Hwy
 North Vancouver BC V7H 0A7
 Phone: +1 (604) 984 0221 Fax: +1 (604) 984 0218
 www.alsglobal.com/geochemistry

To: **LEN COOK**
72 LEVESQUE ST.
SUDBURY ON

Page: 2 - E
 Total # Pages: 2 (A - E)
 Plus Appendix Pages
 Finalized Date: 7-SEP-2017
 Account: LCVEFTYB

CERTIFICATE OF ANALYSIS SD17181071

Sample Description	Method Analyte Units LOR	ME-4ACD81	ME-4ACD81	ME-4ACD81	ME-4ACD81	ME-4ACD81	ME-4ACD81	ME-4ACD81	ME-4ACD81	CRU-QC	PIL-QC
		Co ppm	Cu ppm	Li ppm	Mo ppm	Ni ppm	Pb ppm	Sc ppm	Zn ppm	Pass2mm %	Pass75um %
SAMPLE 1		80	122	20	2	80	16	34	155	87.6	97.0



ALS Canada Ltd.
2103 Dollarton Hwy
North Vancouver BC V7H 0A7
Phone: +1 (604) 984 0221 Fax: +1 (604) 984 0218
www.alsglobal.com/geochemistry

To: **LEN COOK**
72 LEVESQUE ST.
SUDBURY ON

Page: **Appendix 1**
Total # Appendix Pages: **1**
Finalized Date: **7 - SEP - 2017**
Account: **LCVEFTYB**

CERTIFICATE OF ANALYSIS SD17181071

CERTIFICATE COMMENTS

LABORATORY ADDRESSES

Applies to Method:	Processed at ALS Sudbury located at 1351 -B Kelly Lake Road, Unit #1, Sudbury, ON, Canada.		
	CRU -31	CRU-QC	LOG-22
	PUL-QC	SPL-21	WEI-21
			PUL-31
Applies to Method:	Processed at ALS Vancouver located at 2103 Dollarton Hwy, North Vancouver, BC, Canada.		
	C-IR07	ME-4ACD81	ME-ICP06
	ME-MS81	OA-GRA05	S-IR08
			ME-MS42
			TOT-ICP06



ALS Canada Ltd.
2103 Dollarton Hwy
North Vancouver BC V7H 0A7
Phone: +1 (604) 984 0221 Fax: +1 (604) 984 0218
www.alsglobal.com/geochemistry

To: **LEN COOK**
72 LEVESQUE ST.
SUDBURY ON

Page: 1
Total # Pages: 4 (A - E)
Plus Appendix Pages
Finalized Date: 7-SEP-2017
This copy reported on 3-APR-2019
Account: LCVEFTYB

QC CERTIFICATE SD17181071

This report is for 1 Rock sample submitted to our lab in Sudbury, ON, Canada on 24-AUG-2017.

The following have access to data associated with this certificate:

LEN COOK

SAMPLE PREPARATION

ALS CODE	DESCRIPTION
WEI-21	Received Sample Weight
LOG-22	Sample login - Rcd w/o BarCode
CRU-31	Fine crushing - 70% <2mm
CRU-QC	Crushing QC Test
PUL-QC	Pulverizing QC Test
SPL-21	Split sample - riffle splitter
PUL-31	Pulverize split to 85% <75 um

ANALYTICAL PROCEDURES

ALS CODE	DESCRIPTION	INSTRUMENT
ME-MS42	Up to 34 elements by ICP-MS	ICP-MS
OA-GRA05	Loss on Ignition at 1000C	WST-SEQ
TOT-ICP06	Total Calculation for ICP06	
ME-4ACD81	Base Metals by 4-acid dig.	ICP-AES
ME-ICP06	Whole Rock Package - ICP-AES	ICP-AES
C-IR07	Total Carbon (Leco)	LECO
S-IR08	Total Sulphur (Leco)	LECO
ME-MS81	Lithium Borate Fusion ICP-MS	ICP-MS

This is the Final Report and supersedes any preliminary report with this certificate number. Results apply to samples as submitted. All pages of this report have been checked and approved for release.

***** See Appendix Page for comments regarding this certificate *****

Signature:

Colin Ramshaw, Vancouver Laboratory Manager



ALS Canada Ltd.
 2103 Dollarton Hwy
 North Vancouver BC V7H 0A7
 Phone: +1 (604) 984 0221 Fax: +1 (604) 984 0218
 www.alsglobal.com/geochemistry

To: LEN COOK
 72 LEVESQUE ST.
 SUDBURY ON

Page: 2 - A
 Total # Pages: 4 (A - E)
 Plus Appendix Pages
 Finalized Date: 7-SEP-2017
 Account: LCVEFTYB

QC CERTIFICATE OF ANALYSIS SD17181071

Sample Description	Method Analyte Units LOD	ME-ICP06	ME-ICP06	ME-ICP06	ME-ICP06	ME-ICP06	ME-ICP06	ME-ICP06	ME-ICP06	ME-ICP06	ME-ICP06	ME-ICP06	ME-ICP06	ME-ICP06	ME-ICP06	ME-ICP06	OA-GRA05	C-IR07	
		SiO2 %	Al2O3 %	Fe2O3 %	CaO %	MgO %	Na2O %	K2O %	Cr2O3 %	TiO2 %	MnO %	P2O5 %	SrO %	BaO %	LOI %	C %			
		0.01	0.01	0.01	0.01	0.01	0.01	0.01	0.002	0.01	0.01	0.01	0.01	0.01	0.01	0.01	0.01	0.01	
STANDARDS																			
AMIS0085		71.8	11.05	3.44	3.28	1.75	1.75	4.70	0.080	0.21	0.07	0.07	0.01	0.04					
Target Range - Lower Bound		69.0	10.60	3.33	3.12	1.64	1.62	4.48	0.068	0.18	0.04	0.05	<0.01	0.02					
Upper Bound		72.1	11.35	3.67	3.44	1.86	1.84	4.90	0.090	0.24	0.09	0.10	0.03	0.06					
AMIS0286																		7.63	
Target Range - Lower Bound																		7.25	
Upper Bound																		8.03	
AMIS0304		12.25	1.53	20.6	27.5	2.77	0.11	0.28	0.010	1.72	0.44	17.95	0.41	0.28					
Target Range - Lower Bound		11.90	1.42	20.3	27.7	2.72	0.06	0.25	0.005	1.69	0.41	17.80	0.36	0.25					
Upper Bound		12.75	1.62	21.6	29.3	3.02	0.12	0.31	0.016	1.91	0.51	18.90	0.44	0.31					
AMIS0343																			
Target Range - Lower Bound																			
Upper Bound																			
DS-1																			3.15
Target Range - Lower Bound																			3.01
Upper Bound																			3.25
GS313-8																			0.95
Target Range - Lower Bound																			0.90
Upper Bound																			0.98
OGGeo08																			
Target Range - Lower Bound																			
Upper Bound																			
OREAS 920																			
Target Range - Lower Bound																			
Upper Bound																			
OREAS-105		73.5	14.45	2.87	1.46	0.80	5.28	2.38	0.010	0.43	0.02	0.35	0.01	0.08					
Target Range - Lower Bound																			
Upper Bound																			
OREAS-45d																			
Target Range - Lower Bound																			
Upper Bound																			
SARM-43																			47.8
Target Range - Lower Bound																			45.7
Upper Bound																			50.5
SRM88B		1.23	0.34	0.29	30.6	21.4	0.02	0.10	<0.010	0.02	0.02	<0.01	<0.01	<0.01					
Target Range - Lower Bound		1.05	0.30	0.24	29.1	20.4	<0.01	0.08	0.005	<0.01	<0.01	<0.01	<0.01	<0.01					
Upper Bound		1.21	0.37	0.31	30.8	21.7	0.05	0.13	0.016	0.04	0.04	0.03	0.03	0.03					



ALS Canada Ltd.
 2103 Dollarton Hwy
 North Vancouver BC V7H 0A7
 Phone: +1 (604) 984 0221 Fax: +1 (604) 984 0218
 www.alsglobal.com/geochemistry

To: LEN COOK
 72 LEVESQUE ST.
 SUDBURY ON

Page: 2 - B
 Total # Pages: 4 (A - E)
 Plus Appendix Pages
 Finalized Date: 7-SEP-2017
 Account: LCVEFTYB

QC CERTIFICATE OF ANALYSIS SD17181071

Sample Description	Method Analyte Units LOD	S-IR08 S % 0.01	ME-MS81 Ba ppm 0.5	ME-MS81 Ce ppm 0.1	ME-MS81 Cr ppm 10	ME-MS81 Cs ppm 0.01	ME-MS81 Dy ppm 0.05	ME-MS81 Er ppm 0.03	ME-MS81 Eu ppm 0.03	ME-MS81 Ga ppm 0.1	ME-MS81 Gd ppm 0.05	ME-MS81 Ge ppm 5	ME-MS81 Hf ppm 0.2	ME-MS81 Ho ppm 0.01	ME-MS81 La ppm 0.1	ME-MS81 Lu ppm 0.01
STANDARDS																
AMIS0085			322	66.4	570	3.97	10.25	8.26	0.89	14.2	6.98	<5	4.3	2.50	36.2	1.28
Target Range - Lower Bound																
Upper Bound																
AMIS0286																
Target Range - Lower Bound																
Upper Bound																
AMIS0304			2340	7570	90	0.38	125.5	32.3	140.0	47.9	331	7	25.8	17.35	3380	1.85
Target Range - Lower Bound			2340	7280	70	0.35	119.0	30.6	135.0	47.8	309	<5	25.0	16.20	3250	1.83
Upper Bound			2860	8900	120	0.45	145.5	37.4	165.0	58.7	377	18	31.0	19.80	3970	2.26
AMIS0343																
Target Range - Lower Bound																
Upper Bound																
DS-1		2.63														
Target Range - Lower Bound		2.51														
Upper Bound		2.71														
GS313-8		1.24														
Target Range - Lower Bound		1.19														
Upper Bound		1.29														
OGGeo08																
Target Range - Lower Bound																
Upper Bound																
OREAS 920																
Target Range - Lower Bound																
Upper Bound																
OREAS-105			663	117.5	50	2.06	12.15	7.34	1.44	28.5	12.50	<5	6.4	2.61	50.5	0.99
Target Range - Lower Bound			632	105.0	40	1.96	10.95	6.72	1.32	24.3	11.65		5.6	2.19	45.8	0.88
Upper Bound			774	129.0	80	2.42	13.45	8.28	1.68	29.9	14.35		7.2	2.69	56.2	1.10
OREAS-45d																
Target Range - Lower Bound																
Upper Bound																
SARM-43																
Target Range - Lower Bound																
Upper Bound																
SRM88B			6.0	3.3	10	0.16	0.59	0.43	0.12	0.4	0.56	<5	<0.2	0.15	4.9	0.04
Target Range - Lower Bound																
Upper Bound																



ALS Canada Ltd.
 2103 Dollarton Hwy
 North Vancouver BC V7H 0A7
 Phone: +1 (604) 984 0221 Fax: +1 (604) 984 0218
 www.alsglobal.com/geochemistry

To: LENO COOK
 72 LEVESQUE ST.
 SUDBURY ON

Page: 2 - C
 Total # Pages: 4 (A - E)
 Plus Appendix Pages
 Finalized Date: 7-SEP-2017
 Account: LCVEFTYB

QC CERTIFICATE OF ANALYSIS SD17181071

Method Analyte Units LOD	ME-MS81 Nb ppm 0.2	ME-MS81 Nd ppm 0.1	ME-MS81 Pr ppm 0.03	ME-MS81 Rb ppm 0.2	ME-MS81 Sm ppm 0.03	ME-MS81 Sn ppm 1	ME-MS81 Sr ppm 0.1	ME-MS81 Ta ppm 0.1	ME-MS81 Tb ppm 0.01	ME-MS81 Th ppm 0.05	ME-MS81 Tm ppm 0.01	ME-MS81 U ppm 0.05	ME-MS81 V ppm 5	ME-MS81 W ppm 1	ME-MS81 Y ppm 0.1
STANDARDS															
AMIS0085	9.9	27.1	7.23	208	6.28	3	96.6	1.4	1.49	50.1	1.39	245	29	2	64.9
Target Range - Lower Bound															
Upper Bound															
AMIS0286															
Target Range - Lower Bound															
Upper Bound															
AMIS0304	>2500	3740	934	9.3	558	22	3230	11.6	32.6	418	3.47	21.9	366	5	374
Target Range - Lower Bound	4670	3610	925	9.3	543	22	3060	11.1	30.8	406	3.14	21.6	331	3	369
Upper Bound	>2500	4410	>1000	11.8	664	29	3740	13.8	37.7	496	3.86	26.5	415	7	451
AMIS0343															
Target Range - Lower Bound															
Upper Bound															
DS-1															
Target Range - Lower Bound															
Upper Bound															
GS313-8															
Target Range - Lower Bound															
Upper Bound															
OGGeo08															
Target Range - Lower Bound															
Upper Bound															
OREAS 920															
Target Range - Lower Bound															
Upper Bound															
OREAS-105	40.1	65.3	14.65	101.0	14.85	9	89.6	4.4	2.07	380	1.18	526	27	3	62.4
Target Range - Lower Bound	36.9	57.8	14.35	94.8	13.30	8	85.3	4.3	1.95	332	1.02	479	19	<1	58.3
Upper Bound	45.6	70.8	17.65	116.5	16.30	13	104.5	5.5	2.41	406	1.26	585	43	5	71.5
OREAS-45d															
Target Range - Lower Bound															
Upper Bound															
SARM-43															
Target Range - Lower Bound															
Upper Bound															
SRM88B	0.5	3.1	0.75	2.7	0.50	<1	62.1	<0.1	0.09	0.37	0.06	0.26	<5	1	7.6
Target Range - Lower Bound															
Upper Bound															



ALS Canada Ltd.
 2103 Dollarton Hwy
 North Vancouver BC V7H 0A7
 Phone: +1 (604) 984 0221 Fax: +1 (604) 984 0218
 www.alsglobal.com/geochemistry

To: LEN COOK
 72 LEVESQUE ST.
 SUDBURY ON

Page: 2 - D
 Total # Pages: 4 (A - E)
 Plus Appendix Pages
 Finalized Date: 7-SEP-2017
 Account: LCVEFTYB

QC CERTIFICATE OF ANALYSIS SD17181071

Sample Description	Method Analyte Units LOD	ME-MS81	ME-MS81	ME-MS42	ME-MS42	ME-MS42	ME-MS42	ME-MS42	ME-MS42	ME-MS42	ME-MS42	ME-4ACD81	ME-4ACD81	ME-4ACD81	ME-4ACD81
		Yb ppm	Zr ppm	As ppm	Bi ppm	Hg ppm	In ppm	Re ppm	Sb ppm	Se ppm	Te ppm	Tl ppm	Ag ppm	Cd ppm	Co ppm
STANDARDS															
AMIS0085		8.63	147												
Target Range - Lower Bound															
Upper Bound															
AMIS0286															
Target Range - Lower Bound															
Upper Bound															
AMIS0304		15.40	1060												
Target Range - Lower Bound		15.25	1005												
Upper Bound		18.75	1230												
AMIS0343												<0.5	<0.5	2	50
Target Range - Lower Bound												<0.5	<0.5	<1	47
Upper Bound												1.1	1.0	5	56
DS-1															
Target Range - Lower Bound															
Upper Bound															
GS313-8															
Target Range - Lower Bound															
Upper Bound															
OGGeo08												19.8	19.4	97	8350
Target Range - Lower Bound												17.7	16.2	86	7800
Upper Bound												22.7	21.0	108	8980
OREAS 920				4.6	0.61	<0.005	0.030	<0.001	0.64	0.3	0.02				0.14
Target Range - Lower Bound				3.8	0.60	<0.005	0.019	<0.001	0.45	<0.2	<0.01				0.07
Upper Bound				4.9	0.76	0.010	0.043	0.002	0.77	0.7	0.04				0.18
OREAS-105		7.06	237												
Target Range - Lower Bound		6.54	208												
Upper Bound		8.06	259												
OREAS-45d				6.2	0.27	0.035	0.081	<0.001	0.34	1.1	0.05				0.13
Target Range - Lower Bound				5.8	0.26	0.025	0.071	<0.001	0.22	0.7	0.02				0.07
Upper Bound				7.3	0.34	0.053	0.099	0.003	0.49	1.7	0.06				0.17
SARM-43															
Target Range - Lower Bound															
Upper Bound															
SRM88B		0.27	5												
Target Range - Lower Bound															
Upper Bound															



ALS Canada Ltd.
 2103 Dollarton Hwy
 North Vancouver BC V7H 0A7
 Phone: +1 (604) 984 0221 Fax: +1 (604) 984 0218
 www.alsglobal.com/geochemistry

To: LEN COOK
 72 LEVESQUE ST.
 SUDBURY ON

Page: 2 - E
 Total # Pages: 4 (A - E)
 Plus Appendix Pages
 Finalized Date: 7-SEP-2017
 Account: LCVEFTYB

QC CERTIFICATE OF ANALYSIS SD17181071

	Method					
Sample Description	Analyte	Units	LOD	ME-4ACD81	ME-4ACD81	ME-4ACD81
				Li	Mo	Ni
				ppm	ppm	ppm
				10	1	1
				2	1	2
STANDARDS						
AMIS0085						
Target Range - Lower Bound						
Upper Bound						
AMIS0286						
Target Range - Lower Bound						
Upper Bound						
AMIS0304						
Target Range - Lower Bound						
Upper Bound						
AMIS0343				6790	3	13
Target Range - Lower Bound				6300	<1	11
Upper Bound				7730	6	17
						7
						<2
						<1
						2
						83
						70
						90
DS-1						
Target Range - Lower Bound						
Upper Bound						
GS313-8						
Target Range - Lower Bound						
Upper Bound						
OGGeo08				30	900	8770
Target Range - Lower Bound				<10	841	8000
Upper Bound				50	1030	9770
						7450
						6510
						8
						13
						7190
						6500
						7950
OREAS 920						
Target Range - Lower Bound						
Upper Bound						
OREAS-105						
Target Range - Lower Bound						
Upper Bound						
OREAS-45d						
Target Range - Lower Bound						
Upper Bound						
SARM-43						
Target Range - Lower Bound						
Upper Bound						
SRM88B						
Target Range - Lower Bound						
Upper Bound						



ALS Canada Ltd.
 2103 Dollarton Hwy
 North Vancouver BC V7H 0A7
 Phone: +1 (604) 984 0221 Fax: +1 (604) 984 0218
 www.alsglobal.com/geochemistry

To: LEN COOK
 72 LEVESQUE ST.
 SUDBURY ON

Page: 3 - A
 Total # Pages: 4 (A - E)
 Plus Appendix Pages
 Finalized Date: 7-SEP-2017
 Account: LCVEFTYB

QC CERTIFICATE OF ANALYSIS SD17181071

Sample Description	Method Analyte Units LOD	ME-ICP06 SiO2 %	ME-ICP06 Al2O3 %	ME-ICP06 Fe2O3 %	ME-ICP06 CaO %	ME-ICP06 MgO %	ME-ICP06 Na2O %	ME-ICP06 K2O %	ME-ICP06 Cr2O3 %	ME-ICP06 TiO2 %	ME-ICP06 MnO %	ME-ICP06 P2O5 %	ME-ICP06 SrO %	ME-ICP06 BaO %	OA-GRA05 LOI %	C-IR07 C %	
BLANKS																	
BLANK	Target Range - Lower Bound																
	Upper Bound																
BLANK	Target Range - Lower Bound	<0.01	<0.01	<0.01	<0.01	<0.01	<0.01	<0.01	<0.010	<0.01	<0.01	<0.01	<0.01	<0.01	<0.01		
	Upper Bound	0.02	0.02	0.02	0.02	0.02	0.02	0.02	0.004	0.02	0.02	0.02	0.02	0.02	0.02		
BLANK	Target Range - Lower Bound															0.02	
	Upper Bound															<0.01	
BLANK	Target Range - Lower Bound																<0.01
	Upper Bound																0.02
DUPLICATES																	
SAMPLE 1	Target Range - Lower Bound																0.05
DUP	Upper Bound																0.03
	Target Range - Lower Bound																0.03
	Upper Bound																0.05
ORIGINAL	Target Range - Lower Bound																1.00
DUP	Upper Bound																1.02
	Target Range - Lower Bound																0.97
	Upper Bound																1.05
ORIGINAL	Target Range - Lower Bound	25.2	6.19	35.4	4.25	3.28	6.64	0.20	0.330	7.00	0.46	0.16	0.01	0.02			
DUP	Upper Bound	24.9	6.11	34.9	4.20	3.23	6.57	0.20	0.320	6.94	0.45	0.15	0.01	0.02			
	Target Range - Lower Bound	24.4	5.99	34.3	4.11	3.16	6.43	0.19	0.315	6.79	0.43	0.14	<0.01	<0.01			
	Upper Bound	25.7	6.31	36.0	4.34	3.35	6.78	0.22	0.335	7.15	0.48	0.17	0.02	0.03			
ORIGINAL	Target Range - Lower Bound																
DUP	Upper Bound																



ALS Canada Ltd.
 2103 Dollarton Hwy
 North Vancouver BC V7H 0A7
 Phone: +1 (604) 984 0221 Fax: +1 (604) 984 0218
 www.alsglobal.com/geochemistry

To: LENO COOK
 72 LEVESQUE ST.
 SUDBURY ON

Page: 3 - B
 Total # Pages: 4 (A - E)
 Plus Appendix Pages
 Finalized Date: 7-SEP-2017
 Account: LCVEFTYB

QC CERTIFICATE OF ANALYSIS SD17181071

Sample Description	Method Analyte Units LOD	S-IR08 S %	ME-MS81 Ba ppm	ME-MS81 Ce ppm	ME-MS81 Cr ppm	ME-MS81 Cs ppm	ME-MS81 Dy ppm	ME-MS81 Er ppm	ME-MS81 Eu ppm	ME-MS81 Ga ppm	ME-MS81 Gd ppm	ME-MS81 Ge ppm	ME-MS81 Hf ppm	ME-MS81 Ho ppm	ME-MS81 La ppm	ME-MS81 Lu ppm
BLANKS																
BLANK	Target Range - Lower Bound															
	Upper Bound															
BLANK	Target Range - Lower Bound															
	Upper Bound															
BLANK	Target Range - Lower Bound		1.0	<0.5	<10	<0.01	<0.05	<0.03	<0.03	<0.1	<0.05	<5	<0.2	<0.01	<0.5	<0.01
	Upper Bound		<0.5	<0.1	<10	<0.01	<0.05	<0.03	<0.03	<0.1	<0.05		<0.2	<0.01	<0.1	<0.01
BLANK	Target Range - Lower Bound		1.0	0.2	20	0.02	0.10	0.06	0.06	0.2	0.10		0.4	0.02	0.2	0.02
	Upper Bound															
BLANK	Target Range - Lower Bound	<0.01														
	Upper Bound	<0.01														
SAMPLE 1	Target Range - Lower Bound	0.06														
DUP	Target Range - Lower Bound	0.06														
	Upper Bound	0.05														
	Upper Bound	0.07														
DUPLICATES																
ORIGINAL	Target Range - Lower Bound															
	Upper Bound															
ORIGINAL	Target Range - Lower Bound		181.0	176.0	2240	0.43	9.52	5.92	0.99	19.7	11.95	<5	42.1	2.03	88.1	1.03
DUP	Target Range - Lower Bound		188.5	184.5	2300	0.42	9.89	6.22	1.06	20.7	12.45	<5	43.7	2.11	92.3	1.06
	Upper Bound		175.0	171.0	2150	0.39	9.17	5.74	0.94	19.1	11.55	<5	40.6	1.96	85.6	0.98
	Upper Bound		194.5	189.5	2390	0.46	10.25	6.40	1.11	21.3	12.85	10	45.2	2.18	94.8	1.11
ORIGINAL	Target Range - Lower Bound															
DUP	Target Range - Lower Bound															
	Upper Bound															



ALS Canada Ltd.
 2103 Dollarton Hwy
 North Vancouver BC V7H 0A7
 Phone: +1 (604) 984 0221 Fax: +1 (604) 984 0218
 www.alsglobal.com/geochemistry

To: LEN COOK
 72 LEVESQUE ST.
 SUDBURY ON

Page: 3 - C
 Total # Pages: 4 (A - E)
 Plus Appendix Pages
 Finalized Date: 7-SEP-2017
 Account: LCVEFTYB

QC CERTIFICATE OF ANALYSIS SD17181071

Method Analyte Units LOD	ME-MS81 Nb ppm 0.2	ME-MS81 Nd ppm 0.1	ME-MS81 Pr ppm 0.03	ME-MS81 Rb ppm 0.2	ME-MS81 Sm ppm 0.03	ME-MS81 Sn ppm 1	ME-MS81 Sr ppm 0.1	ME-MS81 Ta ppm 0.1	ME-MS81 Tb ppm 0.01	ME-MS81 Th ppm 0.05	ME-MS81 Tm ppm 0.01	ME-MS81 U ppm 0.05	ME-MS81 V ppm 5	ME-MS81 W ppm 1	ME-MS81 Y ppm 0.1
BLANKS															
BLANK															
Target Range - Lower Bound															
Upper Bound															
BLANK															
Target Range - Lower Bound															
Upper Bound															
BLANK	<0.2	<0.1	<0.03	<0.2	<0.03	<1	<0.1	<0.1	<0.01	<0.05	<0.01	<0.05	<5	1	<0.5
Target Range - Lower Bound	<0.2	<0.1	<0.03	<0.2	<0.03	<1	<0.1	<0.1	<0.01	<0.05	<0.01	<0.05	<5	<1	<0.1
Upper Bound	0.4	0.2	0.06	0.4	0.06	2	0.2	0.2	0.02	0.10	0.02	0.10	10	2	0.2
BLANK															
Target Range - Lower Bound															
Upper Bound															
BLANK															
Target Range - Lower Bound															
Upper Bound															
DUPLICATES															
SAMPLE 1															
DUP															
Target Range - Lower Bound															
Upper Bound															
ORIGINAL															
DUP															
Target Range - Lower Bound															
Upper Bound															
ORIGINAL	35.2	80.5	19.85	5.6	14.95	11	101.5	2.9	1.66	34.5	0.99	5.11	1160	5	51.8
DUP	36.6	84.1	20.6	5.6	15.40	11	105.5	3.1	1.77	36.2	1.00	5.36	1170	5	54.1
Target Range - Lower Bound	33.9	78.1	19.20	5.1	14.40	9	98.2	2.8	1.62	33.5	0.94	4.92	1100	4	50.2
Upper Bound	37.9	86.5	21.3	6.1	15.95	13	109.0	3.3	1.81	37.2	1.05	5.55	1230	6	55.7
ORIGINAL															
DUP															
Target Range - Lower Bound															
Upper Bound															

***** See Appendix Page for comments regarding this certificate *****



ALS Canada Ltd.
 2103 Dollarton Hwy
 North Vancouver BC V7H 0A7
 Phone: +1 (604) 984 0221 Fax: +1 (604) 984 0218
 www.alsglobal.com/geochemistry

To: LEN COOK
 72 LEVESQUE ST.
 SUDBURY ON

Page: 3 - D
 Total # Pages: 4 (A - E)
 Plus Appendix Pages
 Finalized Date: 7-SEP-2017
 Account: LCVEFTYB

QC CERTIFICATE OF ANALYSIS SD17181071

Method Analyte Units LOD	ME-MS81 Yb ppm 0.03	ME-MS81 Zr ppm 2	ME-MS42 As ppm 0.1	ME-MS42 Bi ppm 0.01	ME-MS42 Hg ppm 0.005	ME-MS42 In ppm 0.005	ME-MS42 Re ppm 0.001	ME-MS42 Sb ppm 0.05	ME-MS42 Se ppm 0.2	ME-MS42 Te ppm 0.01	ME-MS42 Tl ppm 0.02	ME-4ACD81 Ag ppm 0.5	ME-4ACD81 Cd ppm 0.5	ME-4ACD81 Co ppm 1	ME-4ACD81 Cu ppm 1		
BLANKS																	
BLANK												<0.5	<0.5	<1	<1		
Target Range - Lower Bound												<0.5	<0.5	<1	<1		
Upper Bound												1.0	1.0	2	2		
BLANK			<0.1	<0.01	<0.005	<0.005	<0.001	<0.05	<0.2	<0.01	<0.02						
Target Range - Lower Bound			<0.1	<0.01	<0.005	<0.005	<0.001	<0.05	<0.2	<0.01	<0.02						
Upper Bound			0.2	0.02	0.010	0.010	0.002	0.10	0.4	0.02	0.04						
BLANK	<0.03	<2															
Target Range - Lower Bound	<0.03	<2															
Upper Bound	0.06	4															
BLANK																	
Target Range - Lower Bound																	
Upper Bound																	
BLANK																	
Target Range - Lower Bound																	
Upper Bound																	
DUPLICATES																	
SAMPLE 1 DUP																	
Target Range - Lower Bound																	
Upper Bound																	
ORIGINAL DUP																	
Target Range - Lower Bound																	
Upper Bound																	
ORIGINAL DUP	6.05	1780															
Target Range - Lower Bound	6.48	1850															
Upper Bound	5.92	1720															
ORIGINAL DUP														2.2	2.7	92	3270
Target Range - Lower Bound														2.5	2.4	91	3080
Upper Bound														1.7	1.9	86	3060
ORIGINAL DUP														3.0	3.2	97	3290



ALS Canada Ltd.
 2103 Dollarton Hwy
 North Vancouver BC V7H 0A7
 Phone: +1 (604) 984 0221 Fax: +1 (604) 984 0218
 www.alsglobal.com/geochemistry

To: LEN COOK
 72 LEVESQUE ST.
 SUDBURY ON

Page: 3 - E
 Total # Pages: 4 (A - E)
 Plus Appendix Pages
 Finalized Date: 7-SEP-2017
 Account: LCVEFTYB

QC CERTIFICATE OF ANALYSIS SD17181071

Sample Description	Method Analyte Units LOD	ME-4ACD81 Li ppm 10	ME-4ACD81 Mo ppm 1	ME-4ACD81 Ni ppm 1	ME-4ACD81 Pb ppm 2	ME-4ACD81 Sc ppm 1	ME-4ACD81 Zn ppm 2
BLANKS							
BLANK		<10	<1	<1	<2	<1	<2
Target Range - Lower Bound			<1	<1	<2		<2
Upper Bound			2	2	4		4
BLANK							
Target Range - Lower Bound							
Upper Bound							
BLANK							
Target Range - Lower Bound							
Upper Bound							
BLANK							
Target Range - Lower Bound							
Upper Bound							
BLANK							
Target Range - Lower Bound							
Upper Bound							
DUPLICATES							
SAMPLE 1 DUP							
Target Range - Lower Bound							
Upper Bound							
ORIGINAL DUP							
Target Range - Lower Bound							
Upper Bound							
ORIGINAL DUP		70	278	45	3	9	114
Target Range - Lower Bound		60	259	41	<2	7	103
Upper Bound		80	289	47	4	10	119



ALS Canada Ltd.
 2103 Dollarton Hwy
 North Vancouver BC V7H 0A7
 Phone: +1 (604) 984 0221 Fax: +1 (604) 984 0218
 www.alsglobal.com/geochemistry

To: LEN COOK
 72 LEVESQUE ST.
 SUDBURY ON

Page: 4 - A
 Total # Pages: 4 (A - E)
 Plus Appendix Pages
 Finalized Date: 7-SEP-2017
 Account: LCVEFTYB

QC CERTIFICATE OF ANALYSIS SD17181071

	Method	ME-ICP06	ME-ICP06	ME-ICP06	ME-ICP06	ME-ICP06	ME-ICP06	ME-ICP06	ME-ICP06	ME-ICP06	ME-ICP06	ME-ICP06	ME-ICP06	ME-ICP06	OA-GRA05	C-IR07
Sample Description	Analyte Units LOD	SiO2	Al2O3	Fe2O3	CaO	MgO	Na2O	K2O	Cr2O3	TiO2	MnO	P2O5	SrO	BaO	LOI	C
	%															
	LOD	0.01	0.01	0.01	0.01	0.01	0.01	0.01	0.002	0.01	0.01	0.01	0.01	0.01	0.01	0.01

ORIGINAL DUP Target Range - Lower Bound Upper Bound	DUPLICATES
--	-------------------

--	--



ALS Canada Ltd.
 2103 Dollarton Hwy
 North Vancouver BC V7H 0A7
 Phone: +1 (604) 984 0221 Fax: +1 (604) 984 0218
 www.alsglobal.com/geochemistry

To: LEN COOK
 72 LEVESQUE ST.
 SUDBURY ON

Page: 4 - B
 Total # Pages: 4 (A - E)
 Plus Appendix Pages
 Finalized Date: 7-SEP-2017
 Account: LCVEFTYB

QC CERTIFICATE OF ANALYSIS SD17181071

	S-IR08	ME-MS81	ME-MS81	ME-MS81	ME-MS81	ME-MS81	ME-MS81	ME-MS81	ME-MS81	ME-MS81	ME-MS81	ME-MS81	ME-MS81	ME-MS81	ME-MS81
Method Analyte	S	Ba	Ce	Cr	Cs	Dy	Er	Eu	Ga	Gd	Ge	Hf	Ho	La	Lu
Units	%	ppm	ppm	ppm	ppm	ppm	ppm	ppm	ppm	ppm	ppm	ppm	ppm	ppm	ppm
LOD	0.01	0.5	0.1	10	0.01	0.05	0.03	0.03	0.1	0.05	5	0.2	0.01	0.1	0.01

ORIGINAL DUP Target Range - Lower Bound Upper Bound	DUPLICATES
--	-------------------

--	--



ALS Canada Ltd.
 2103 Dollarton Hwy
 North Vancouver BC V7H 0A7
 Phone: +1 (604) 984 0221 Fax: +1 (604) 984 0218
 www.alsglobal.com/geochemistry

To: LEN COOK
 72 LEVESQUE ST.
 SUDBURY ON

Page: 4 - C
 Total # Pages: 4 (A - E)
 Plus Appendix Pages
 Finalized Date: 7-SEP-2017
 Account: LCVEFTYB

QC CERTIFICATE OF ANALYSIS SD17181071

	Method	ME-MS81	ME-MS81	ME-MS81	ME-MS81	ME-MS81	ME-MS81	ME-MS81	ME-MS81	ME-MS81	ME-MS81	ME-MS81	ME-MS81	ME-MS81	ME-MS81	
Sample Description	Analyte Units LOD	Nb ppm 0.2	Nd ppm 0.1	Pr ppm 0.03	Rb ppm 0.2	Sm ppm 0.03	Sn ppm 1	Sr ppm 0.1	Ta ppm 0.1	Tb ppm 0.01	Th ppm 0.05	Tm ppm 0.01	U ppm 0.05	V ppm 5	W ppm 1	Y ppm 0.1

ORIGINAL DUP Target Range - Lower Bound Upper Bound	DUPLICATES
--	-------------------

--	--



ALS Canada Ltd.
 2103 Dollarton Hwy
 North Vancouver BC V7H 0A7
 Phone: +1 (604) 984 0221 Fax: +1 (604) 984 0218
 www.alsglobal.com/geochemistry

To: LEN COOK
 72 LEVESQUE ST.
 SUDBURY ON

Page: 4 - D
 Total # Pages: 4 (A - E)
 Plus Appendix Pages
 Finalized Date: 7-SEP-2017
 Account: LCVEFTYB

QC CERTIFICATE OF ANALYSIS SD17181071

Sample Description	Method	Analyte	Units	LOD	ME-MS81	ME-MS81	ME-MS42	ME-MS42	ME-MS42	ME-MS42	ME-MS42	ME-MS42	ME-4ACD81	ME-4ACD81	ME-4ACD81	ME-4ACD81			
					Yb	Zr	As	Bi	Hg	In	Re	Sb	Se	Te	Tl	Ag	Cd	Co	Cu
					ppm	ppm	ppm	ppm	ppm	ppm	ppm	ppm	ppm	ppm	ppm	ppm	ppm	ppm	ppm
					0.03	2	0.1	0.01	0.005	0.005	0.001	0.05	0.2	0.01	0.02	0.5	0.5	1	1
DUPLICATES																			
ORIGINAL						41.0	0.02	0.016	0.015	0.006	1.16	2.9	0.01	0.30					
DUP						41.9	0.02	0.013	0.017	0.005	1.24	3.2	0.01	0.32					
Target Range - Lower Bound						39.3	<0.01	0.008	0.010	0.004	1.06	2.7	<0.01	0.27					
Upper Bound						43.6	0.03	0.021	0.022	0.007	1.34	3.4	0.02	0.35					

***** See Appendix Page for comments regarding this certificate *****



ALS Canada Ltd.
 2103 Dollarton Hwy
 North Vancouver BC V7H 0A7
 Phone: +1 (604) 984 0221 Fax: +1 (604) 984 0218
 www.alsglobal.com/geochemistry

To: LEN COOK
 72 LEVESQUE ST.
 SUDBURY ON

Page: 4 - E
 Total # Pages: 4 (A - E)
 Plus Appendix Pages
 Finalized Date: 7-SEP-2017
 Account: LCVEFTYB

QC CERTIFICATE OF ANALYSIS SD17181071

Sample Description	Method Analyte Units LOD	ME-4ACD81	ME-4ACD81	ME-4ACD81	ME-4ACD81	ME-4ACD81	ME-4ACD81
		Li ppm 10	Mo ppm 1	Ni ppm 1	Pb ppm 2	Sc ppm 1	Zn ppm 2
ORIGINAL DUP Target Range - Lower Bound Upper Bound	DUPLICATES						



ALS Canada Ltd.
2103 Dollarton Hwy
North Vancouver BC V7H 0A7
Phone: +1 (604) 984 0221 Fax: +1 (604) 984 0218
www.alsglobal.com/geochemistry

To: **LEN COOK**
72 LEVESQUE ST.
SUDBURY ON

Page: **Appendix 1**
Total # Appendix Pages: **1**
Finalized Date: **7-SEP-2017**
Account: **LCVEFTYB**

QC CERTIFICATE OF ANALYSIS SD17181071

CERTIFICATE COMMENTS

LABORATORY ADDRESSES

Applies to Method:	Processed at ALS Sudbury located at 1351-B Kelly Lake Road, Unit #1, Sudbury, ON, Canada.			
	CRU-31	CRU-QC	LOG-22	
	PUL-QC	SPL-21	WEI-21	PUL-31
Applies to Method:	Processed at ALS Vancouver located at 2103 Dollarton Hwy, North Vancouver, BC, Canada.			
	C-IR07	ME-4ACD81	ME-ICP06	ME-MS42
	ME-MS81	OA-GRA05	S-IR08	TOT-ICP06

Areas Being Stripped:

claim (OLD #) 174542
4271487 103694

stripping map # 1

CLAIMS
181204
127702

claim
4279045
(OLD #)
182127

AREA #1 STRIPPED

AREA #2 STRIPPED

Trail cut

claim (OLD #)
4271488
Trail. Snow mobile

claims
324288
142923

CLAIMS
~~304887~~
336132

claim
136912

claim
343645

BLACK
NEW NUMBERS
and lines
BLUE
OLD claim lines

claim (OLD #)
42779044

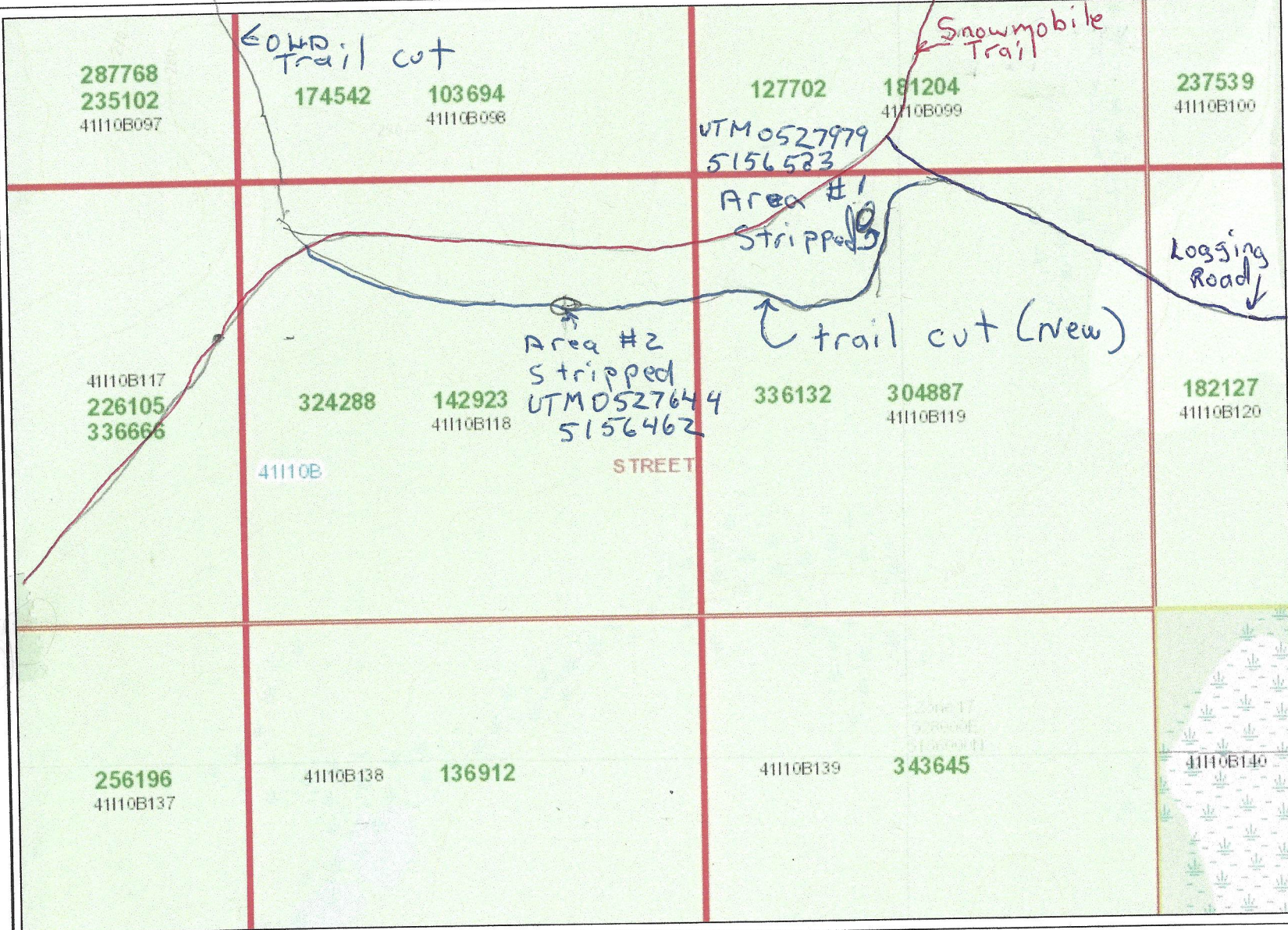


250 m



STREET TWP.

KUKAGAMI
LAKE ROAD



- ### Legend
- Provincial Grid Cell**
 - Available
 - Pending
 - Unavailable
 - Mining Claim**
 - Mining Lease**
 - Surface Rights Only
 - Mining Rights Only
 - Surface and Mining Rights
 - Mining Licence of Occupation**
 - Surface Rights Only
 - Mining Rights Only
 - Surface and Mining Rights
 - Mining Patent**
 - Surface Rights Only
 - Mining Rights Only
 - Surface and Mining Rights
 - Mining Division**
 - MNDM Townships and Areas**
 - Provincial Grid Group**
 - Non-Mining Land Tenure**
 - Patent, Surface Rights Only
 - Patent, Mining Rights Only
 - Patent, Surface and Mining Rights
 - Lease, Surface Rights Only
 - Lease, Mining Rights Only
 - Lease, Surface and Mining Rights
 - Water Power Lease Agreement
 - Licence of Occupation, Surface Rights Only



Projection: Web Mercator



The Ontario Ministry of Northern Development and Mines shall not be liable in any way for the use of, or reliance upon, this map or any information on this map. This map should not be used for: navigation, a plan of survey, routes, nor locations.

Imagery Copyright Notices: Ontario Ministry of Natural Resources and Forestry; NASA Landsat Program; First Base Solutions Inc.; Aéro-Photo (1961) Inc.; DigitalGlobe Inc.; U.S. Geological Survey.



Close up View of Area 1

Claim # 304887
336132

Area # 1 Stripped

N $46^{\circ} 33.735'$

W $080^{\circ} 38.096'$

Elevation 937'

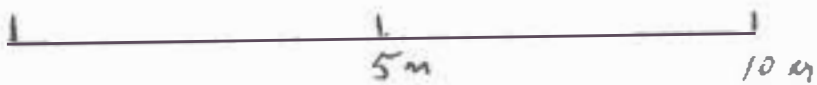
North

Astronomic

Quartz red and white
Dipping at aprox. 30°
with rust and some
small amounts of Garnet



Trail



scale 1 to 100

Close up View of Area 2

Claim

324 288

14 2923

Area #2 Stripped

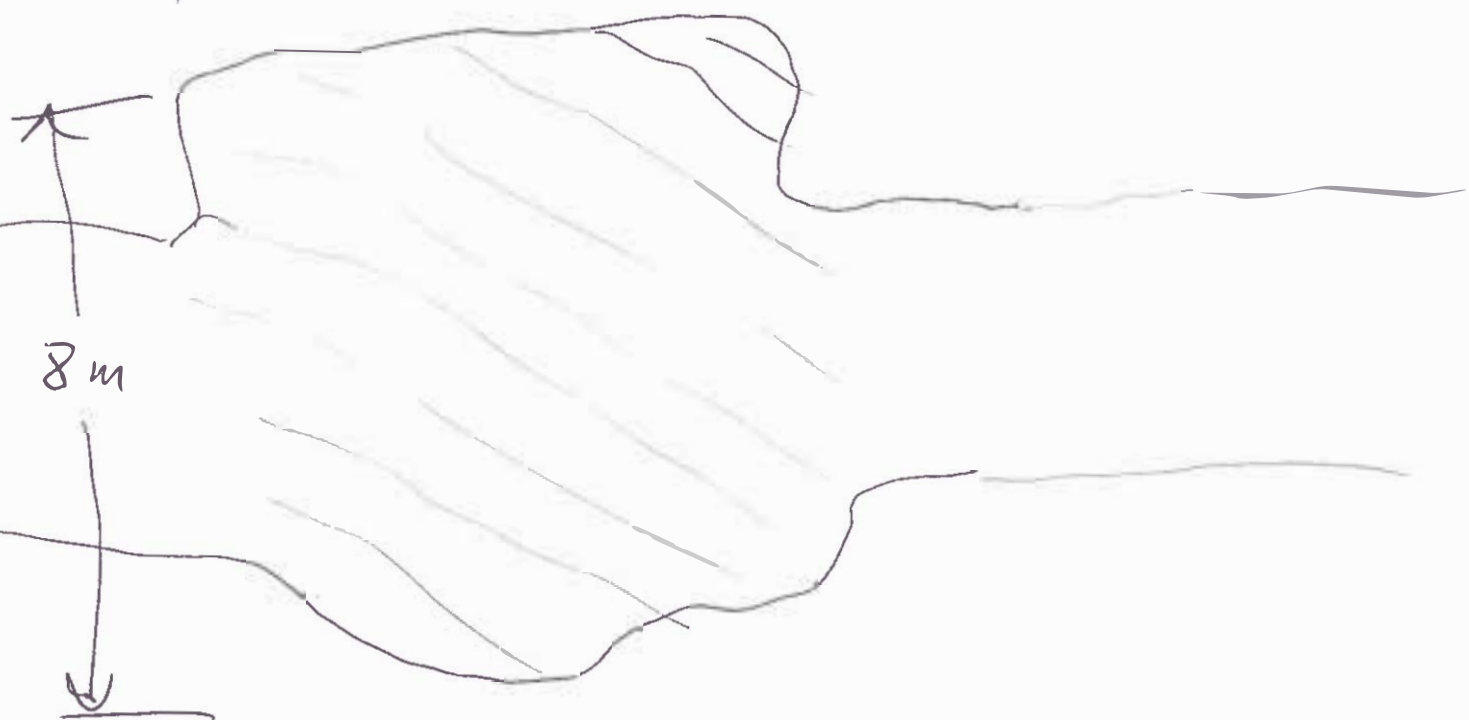
N 46° 33.667'

w 080° 38.357'

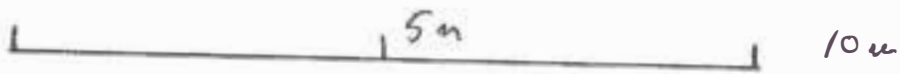
Elevation 972'

North
Astronomic

← 8m →



white Quartz
with lots of mineralization
in the Quartz dipping at about 80°



Scale 1 to 100

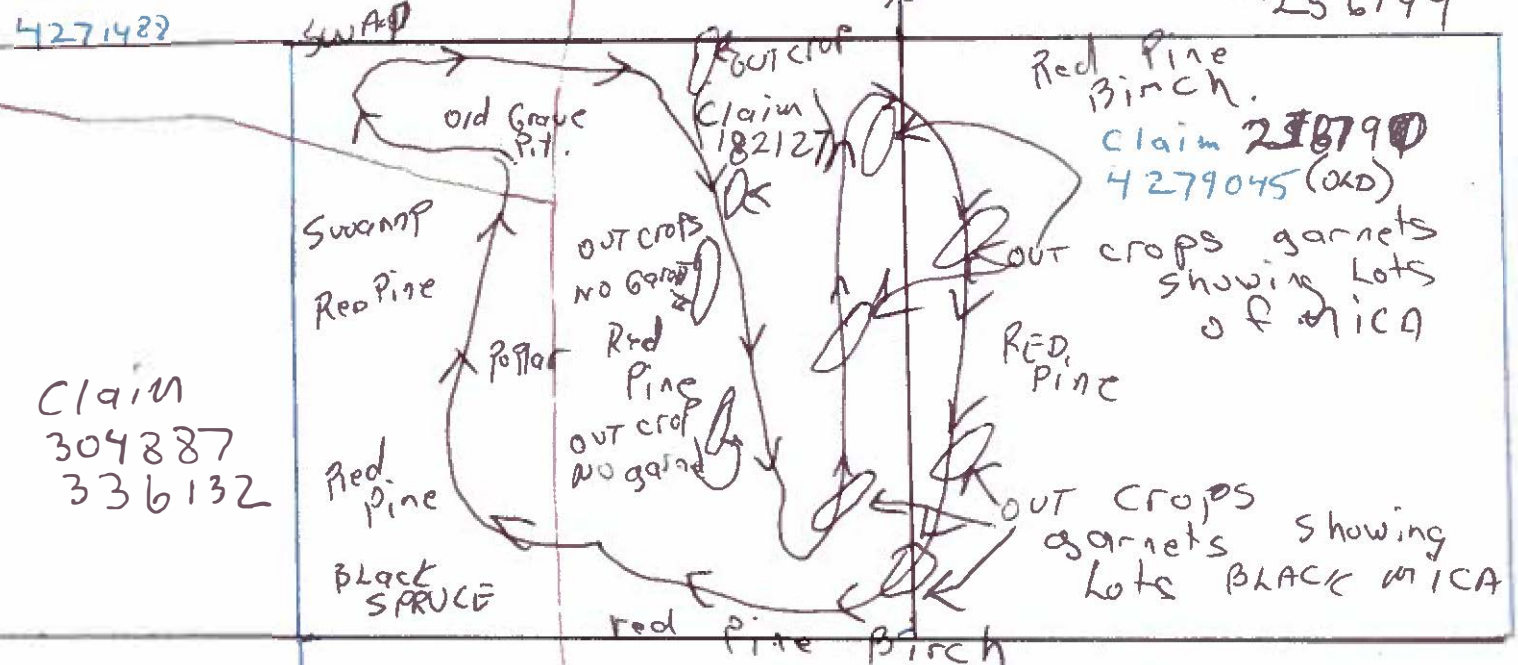
Prospecting Results of Area 1

Claim 4265390

CLAIM 237539

Claim 4271482

Some garnet showing CLAIM 256199



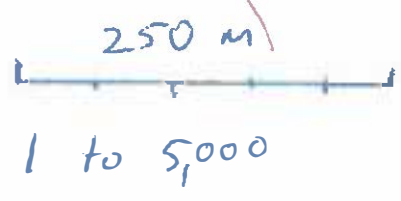
Claim 304887 336132

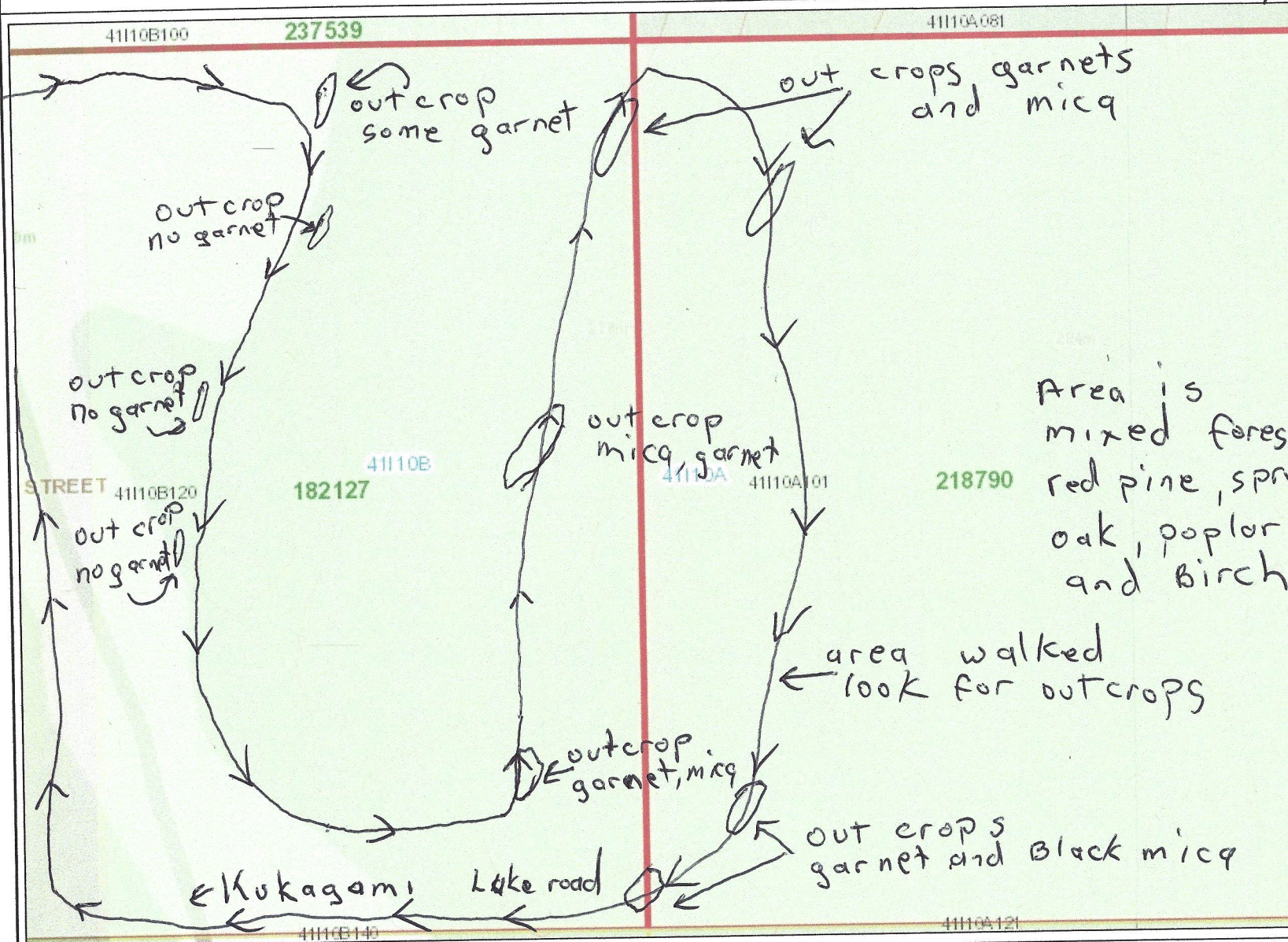
MAY 12 2017 WALK claim looking for outcrops

KUKA GAME LAKE ROAD

STREET TWP

NORTH





Legend

Provincial Grid Cell

- Available
- Pending
- Unavailable

Mining Claim

Mining Lease

- Surface Rights Only
- Mining Rights Only
- Surface and Mining Rights

Mining Licence of Occupation

- Surface Rights Only
- Mining Rights Only
- Surface and Mining Rights

Mining Patent

- Surface Rights Only
- Mining Rights Only
- Surface and Mining Rights

Mining Division

MNDM Townships and Areas

Provincial Grid Group

Non-Mining Land Tenure

- Patent, Surface Rights Only
- Patent, Mining Rights Only
- Patent, Surface and Mining Right
- Lease, Surface Rights Only
- Lease, Mining Rights Only
- Lease, Surface and Mining Rights
- Water Power Lease Agreement
- Licence of Occupation, Surface Rights Only



Projection: Web Mercator



The Ontario Ministry of Northern Development and Mines shall not be liable in any way for the use of, or reliance upon, this map or any information on this map. This map should not be used for: navigation, a plan of survey, routes, nor locations.

Imagery Copyright Notices: Ontario Ministry of Natural Resources and Forestry; NASA Landsat Program; First Base Solutions Inc.; Aéro-Photo (1961) Inc.; DigitalGlobe Inc.; U.S. Geological Survey.



Prospecting Map of Area 2

Claim 4265389 (OLD)

Prospecting map #2

Trail

Claim 4265390
237539

Claim 174542
103694

Claim 181204
127702

OUT CROP
Quartz

OUT CROP
QUARTZ

Claim 4271487 (old)
304887
336132

Claim 182127

Claim 324288
142923

Cedar
Pine
Birch
OAK

Boulder
Trownd
with
Lots garnet
and mica

Birch
Pine
OAK
Cedar

Birch OAK Pine

Claim 324288
142923
OAK

Cedar
Pine
Trail Pine

Birch
OAK
Pine

Claim 4271487 (old)
343645

Claim

Snowmobile

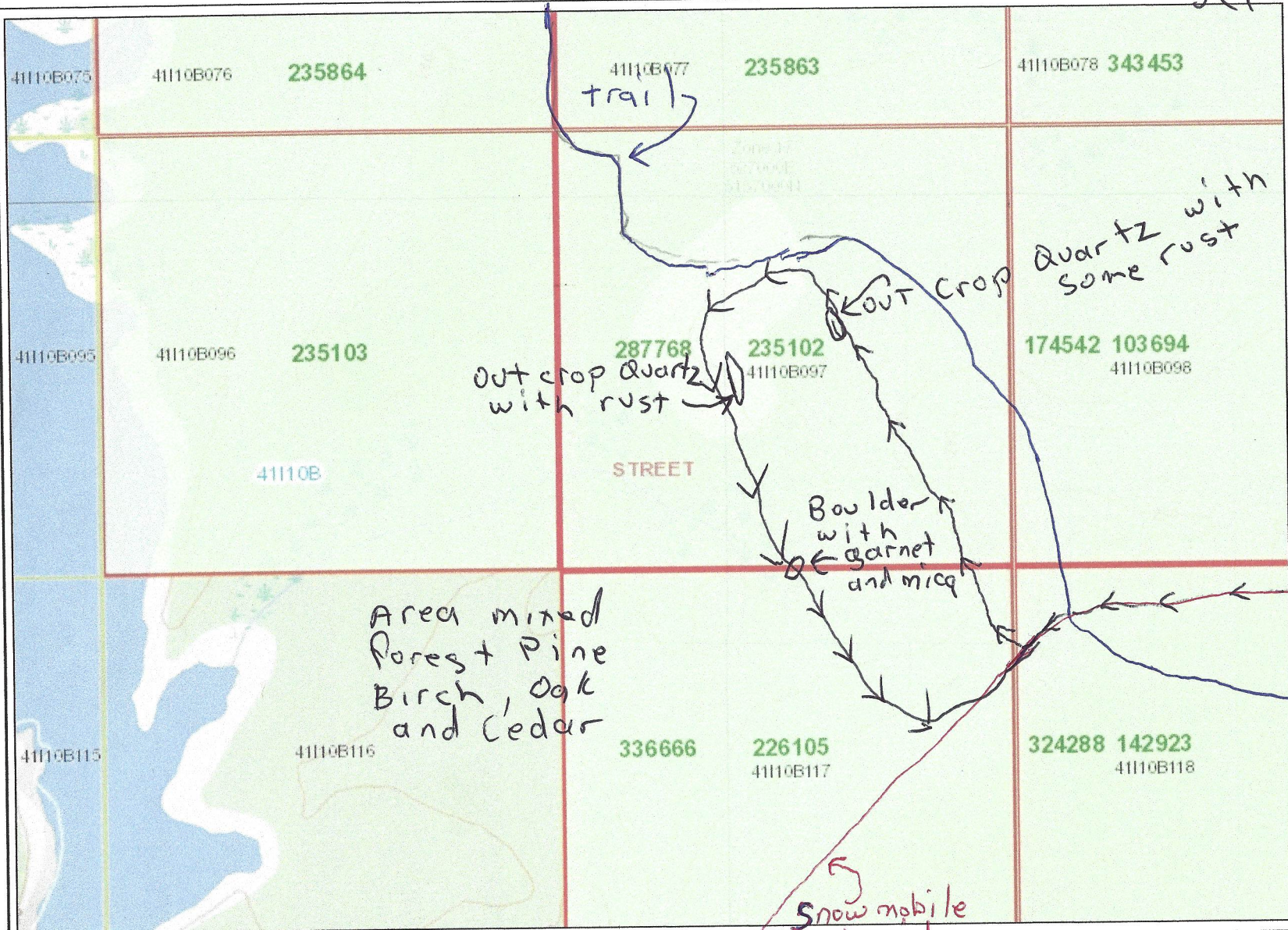
Claim 136912

Sept. 14 2017 walk Claim
looking for out crops
and garnet

250 m
1 to 5,000

STREET TWP.

North



Legend

Provincial Grid Cell

- Available
- Pending
- Unavailable

Mining Claim

- Mining Claim

Mining Lease

- Surface Rights Only
- Mining Rights Only
- Surface and Mining Rights

Mining Licence of Occupation

- Surface Rights Only
- Mining Rights Only
- Surface and Mining Rights

Mining Patent

- Surface Rights Only
- Mining Rights Only
- Surface and Mining Rights

Mining Division

- Mining Division

MNDM Townships and Areas

- MNDM Townships and Areas

Provincial Grid Group

Non-Mining Land Tenure

- Patent, Surface Rights Only
- Patent, Mining Rights Only
- Patent, Surface and Mining Rights
- Lease, Surface Rights Only
- Lease, Mining Rights Only
- Lease, Surface and Mining Rights
- Water Power Lease Agreement
- Licence of Occupation, Surface Rights Only



Projection: Web Mercator

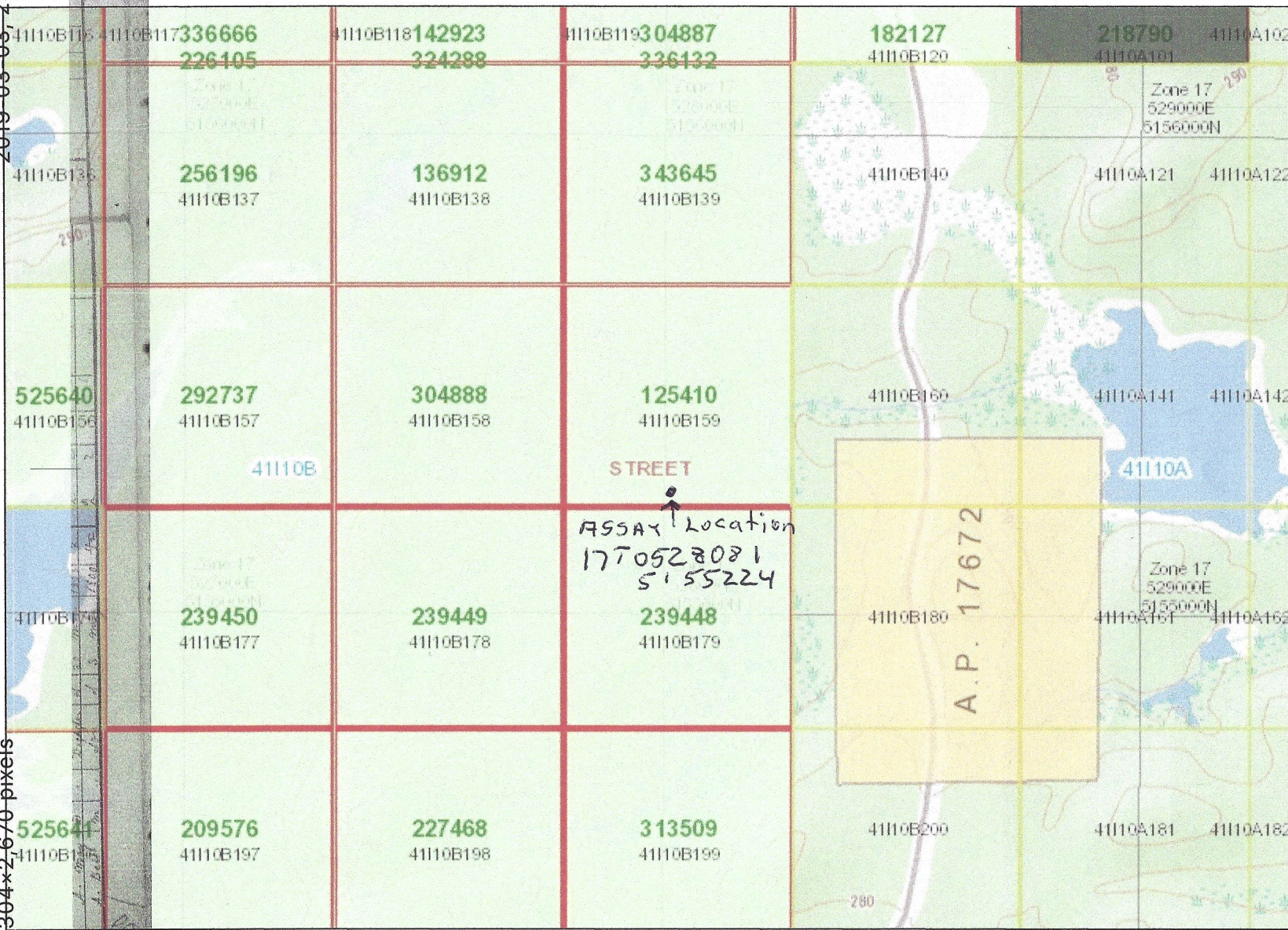


The Ontario Ministry of Northern Development and Mines shall not be liable in any way for the use of, or reliance upon, this map or any information on this map. This map should not be used for: navigation, a plan of survey, routes, nor locations.

Imagery Copyright Notices: Ontario Ministry of Natural Resources and Forestry; NASA Landsat Program; First Base Solutions Inc.; Aéro-Photo (1961) Inc.; DigitalGlobe Inc.; U.S. Geological Survey.



2019-03-03 12:02 PM
z000161481.jpg 3,304x2,670 pixels



Legend

Provincial Grid Cell

- Available
- Pending
- Unavailable

Mining Claim

- Mining Lease
- Surface Rights Only
- Mining Rights Only
- Surface and Mining Rights

Mining Licence of Occupation

- Surface Rights Only
- Mining Rights Only
- Surface and Mining Rights

Mining Patent

- Surface Rights Only
- Mining Rights Only
- Surface and Mining Rights

Mining Division

- MNDM Townships and Areas

Provincial Grid Group

Non-Mining Land Tenure

- Patent, Surface Rights Only
- Patent, Mining Rights Only
- Patent, Surface and Mining Rights
- Lease, Surface Rights Only
- Lease, Mining Rights Only
- Lease, Surface and Mining Rights
- Water Power Lease Agreement
- Licence of Occupation, Surface Rights Only

http://data2.collections.mdm.ca/ga1901/z000161481.jpg

0 0.63 km

The Ontario Ministry of Northern Development and Mines shall not be liable in any way for the use of, or reliance upon, this map or any information on this map. This map should not be used for: navigation, a plan of survey, routes, nor locations.

Projection: Web Mercator

Imagery Copyright Notices: Ontario Ministry of Natural Resources and Forestry; NASA Landsat Program; First Base Solutions Inc.; Aéro-Photo (1961) Inc.; DigitalGlobe Inc.; U.S. Geological Survey.



Expense Report

CATEGORY	DATE	PAYEE	DESCRIPTION	AMOUNT	CLAIM #
PROSPECTING	MAY 12 2017	LEN COOK	PROSPECTING	\$300	182127
		JASON COOK		\$300	218790
	SEPT 14 2017	LEN COOK	PROSPECTING	\$300	324288
		JASON COOK		\$300	
			SUBTOTAL	\$1200.00	

CATEGORY	DATE	PAYEE	DESCRIPTION	AMOUNT	CLAIM #
MECHANIZED STRIPPING	NOV 28 2017	LEN COOK	BRING IN EXCAVATOR & START TO BUILD TRAIL	\$300	336132
		JASON COOK		\$300	
				\$325 (RENTAL)	
	NOV 29 2017	LEN COOK	BUILD TRAIL & START TO STRIP AREA 1	\$300	336132
		JASON COOK		\$300	
				\$325 (RENTAL)	
	NOV 30	LEN COOK	FINISH STRIPPING AREA 1 & START TRAIL TO AREA 2	\$300	336132
		JASON COOK		\$300	
				\$325	
	DEC 1 2017	LEN COOK	BUILD TRAIL TO AREA 2 & START TO STRIP	\$300	324288
		JASON COOK		\$300	
				\$325	
	DEC 2 2017	LEN COOK	FINISH STRIP AREA 2 & MOVE OUT EXCAVATOR	\$300	324288
		JASON COOK		\$300	
				\$325	
			SUBTOTAL	\$4625.00	

CATEGORY	DATE	PAYEE	DESCRIPTION	AMOUNT	CLAIM #
MANUAL WORK	MARCH 6 2017	LEN COOK	CUTTING TRAIL WIDE ENOUGH FOR EXCAVATOR	\$300	336132
		JASON COOK		\$300	
	MARCH 13 2017	LEN COOK JASON COOK	CUTTING TRAIL	\$300 \$300	336132
	MARCH 14 2017	LEN COOK JASON COOK	CUTTING TRAIL	\$300 \$300	336132
	MAY 4 2017	LEN COOK JASON COOK	CUTTING TRAIL	\$300 \$300	336132
	MAY 6 2017	LEN COOK JASON COOK	CUTTING TRAIL	\$300 \$300	336132
	MAY 10 2017	LEN COOK JASON COOK	CUTTING TRAIL & CLEANING UP STUMPS	\$300 \$300	324288
	MAY 11 2017	LEN COOK JASON COOK	CUTTING TRAIL & CLEANING UP STUMPS	\$300 \$300	324288
	OCT 10 2017	LEN COOK JASON COOK	CLEAN TRAIL & HAND STRIP	\$300 \$300	324288
	OCT 15 2017	LEN COOK JASON COOK	CLEAN TRAIL & HAND STRIP	\$300 \$300	336132
	MAY 30 2018	LEN COOK JASON COOK	OUTCROP WASHING & MAPING	\$300 \$300	336132
	MAY 31 2018	LEN COOK JASON COOK	OUTCROP WASHING & MAPING	\$300 \$300	324288
			SUBTOTAL	\$6600	

ASSOCIATED COSTS

CATEGORY	DATE	PAYEE	DESCRIPTION	AMOUNT	CLAIM #
ASSAY	SEPT 7 2017	ALS	ASSAY REPORT	\$123	336132
WRITING REPORT	SEPT 2018 TO JAN 2018	LEN COOK	5 DAYS WRITING REPORT	\$1500	324288
SUPPLIES	MARCH 6 2017 TO DEC 2 2017	LEN COOK	CHAINSAW RENTAL FUEL 12 DAYS @ \$25PER DAY	\$300	324288
	MAR 6 2017 TO MAY 31 2018	LEN COOK	ATV & TRAILER RENTAL 12 DAYS @ \$100PER DAY	\$1200	336132
	MAY 30 2018 TO MAY 31 2018	LEN COOK	PRESSURE WASHER, WATER PUMP & GENERATOR \$200PER DAY	\$400	324288
	MAY 29 2018	CANADIAN TIRE GAS BAR	FUEL FOR PRESSURE WASHER & GENERATOR	\$80	324288
	NOV 28 2017	CANADIAN TIRE GAS BAR	DIESEL FUEL FOR EXCAVATOR	\$102	324288
TRANSPORTATION	MAR 6 2017 TO MAY 31 2018	LEN COOK	18 TRIPS OF (52KM=936KM) @ \$0.50	\$468	336132
	MAR 6 2017 TO MAY 31 2018	JASON COOK	18 TRIPS OF (130KM=2340KM) @ \$0.50	\$1170	324288
FOOD	MAR 6 2017 TO MAY 31 2018	FOOD BASICS	LUNCH, SNACKS AND DRINKS	\$360	324288
			SUBTOTAL	\$5580	
			TOTALS	\$18,128	