


We are committed to providing [accessible customer service](#).

If you need accessible formats or communications supports, please [contact us](#).

Nous tenons à améliorer [l'accessibilité des services à la clientèle](#).

Si vous avez besoin de formats accessibles ou d'aide à la communication, veuillez [nous contacter](#).

GEOPHYSICAL REPORT  
FOR  
***COLLINS, GLOSTER ET AL***  
ON THE  
***HEENAN AND MARION PROPERTIES***  
HEENAN AND MARION TOWNSHIPS  
PORCUPINE MINING DIVISION  
NORTHEASTERN, ONTARIO

  
Prepared by: J. C. Grant,  
August 2019

**TABLE OF CONTENTS**

INTRODUCTION.....	1
PROPERTY LOCATION AND ACCESS.....	1
CLAIM BLOCK.....	1
PERSONNEL.....	2
GROUND PROGRAM.....	2
MAGNETIC SURVEY.....	2
CONCLUSIONS AND RECOMMENDATIONS.....	3
CERTIFICATE	
APPENDICES: A	
FIGURE 1 LOCATION MAP	
FIGURE 2 GRID ACCESS ROUTE	
CLAIM BLOCK/GRID MAP HEENAN	
CLAIM BLOCK/GRID MAP MARION	
MAG PLAN MAP HEENAN	
MAG PLAN MAP MARION	
TERRAPLUS GSM-19WV MAG SYSTEM	

## **INTRODUCTION:**

The services of Exsics Exploration Limited were retained by the Collins-Gloster group on behalf of the claim holders, to complete a ground geophysical program across a portion of their claim holdings, in the Porcupine division. The properties are located in Heenan and Marion Township of the Porcupine Mining Division in Northeastern Ontario.

The purpose of the program was to locate and outline the historic iron rich formations that are known to cross cut the grid areas as this structure is thought to host several gold gold showings along its strike length.

## **PROPERTY LOCATION AND ACCESS:**

The Heenan property is located approximately 90 kilometers west of the city of Timmins, Ontario, in southeast section of Heenan Township. The Heenan claim block is centered at NAD 83 UTM co-ordinate 397025E, 5292500N, Zone 17.

Access to the Heenan property is by way of the Heenan Road, an all-weather logging road that crosses the south and east part of the property and intersects the central west side of the grid.

The Marion Property is accessed by continuing northeast to east along the Heenan road to a parking spot about 10 kilometers from the Heenan grid. At this point there is an ATV trail that runs south and then east for about 1.4 kilometers to a boat launch on the river. The southwest section of the Marion grid is reached by boat travelling north along the river for 3 kilometers. The grid area was accessed by foot traverse going east from this point. The Heenan road is accessed from the Foleyet Timber road that is approximately 95 km south of Hwy 101. The Foleyet Timber road and Highway 101 intersection is located approximately 12 km east of the Town of Foleyet

Traveling time from Timmins to the grid is about 2 hours. Figures 1 and 2, Appendix A

## **CLAIM BLOCK:**

The claim numbers that were covered by the geophysical survey on both the Heenan property and Marion property can be found on Figures 3 and 4 that was copied from the claim maps of Heenan and Marion Township. Refer to the Figures for the positioning of the grid lines and survey areas within the two claim blocks. Appendix A

**PERSONNEL:**

The field crew directly responsible for the collection of all the raw data were as follows.

Chad Gloster..... Timmins, Ontario  
 Norm Collins..... Timmins, Ontario  
 Mario Pilon ..... Timmins, Ontario  
 Scott Duhan..... Timmins, Ontario

The plotting and interpretation as well as the report was completed by J. C. Grant of Exsics Exploration Limited.

**GROUND PROGRAM:**

The ground program consisted of detailed compass paced grids over both properties that were controlled by hand held GPS units for line accuracy. A Total field magnetic survey was done in conjunction with the grid layout using the TerraPlus GSM-19WV walking mag system. Specifications for this unit can be found as Appendix A of this report.

In all, a total of 7 kilometers of grid lines were completed across the Heenan Property at 200 meter intervals and 11.6 kilometers were completed across the Marion property at 100 and 200 meter intervals. The ground work was completed between August 15<sup>th</sup> and the 22<sup>nd</sup> 2019.

The following parameters were kept constant throughout both of the surveys.

**Magnetic Survey:**

Line spacing.....	100 and 200 meters
Station spacing.....	25 meters
Reading intervals.....	25 meters
Diurnal monitor.....	base station
Base record intervals	30 seconds
Reference field.....	56,500 gammas
Datum subtracted.....	56,000 and 50,000 gammas
Unit accuracy.....	+/- 0.1 gamma

Once the survey was completed the field data was plotted directly onto a base map at a scale of 1:2500. A datum level between 50000 and 56000 gammas was removed from the data before it was plotted onto the base map. The data was then contoured at 75 and 100 gamma intervals wherever possible. A copy of these color base map are included in the back pocket of this report.

**MAGNETIC SURVEY RESULTS:, HEENAN GRID:**

The most predominant features on the grid are well defined and generally cover the southern section and central eastern edge of the survey area. The long narrow linear magnetic high trending at azimuth 120 across all of the grid lines may be indicative of a diabase dike unit that is thought to cross cut this section of the grid area. This type of feather has been outlined on the Chapleau-Foleyet Geological Compilation series.

The second most predominant high is most likely associated to the suspected iron rich formation that represent a portion of the Woman River iron formation that is striking into the grid area from the northeast.

**MAGNETIC SURVEY RESULTS: MARION GRID: Map in Appendix A**

The most predominant magnetic feature outlined across this grid area correlates to the Woman River iron formation that has been well documented in the area. This is evident between lines 1000ME and 100ME striking in a northeast to southwest direct and it continues off of the grid to the southeast.

The weaker magnetic unit generally striking north south between lines 1200ME and 1200ME may be indicative of a dike like unit that has cross cut the iron formation.

The iron formation itself may show evidence of cross faulting and or shearing represented by narrow lows between the iron rich structure. This shearing and or faulting appears to strike east-west and possibly northeast across the central and southern sections of the formation.

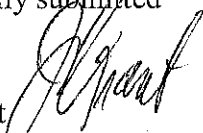
**CONCLUSIONS AND RECOMMENDATIONS: Map in Appendix A**

The ground magnetic program was successful in locating and outlining the favorable geological structures of the properties. The most predominant feature is the Woman River Iron formation that appears to cross cut the Marion Grid and possibly the eastern edge of the Heenan property. Also evident is localized shearing and or faulting across the iron formation as well as the possibility of several dike like units striking north-south and northeast to south west across the area.

A follow up program of using either a deeper penetrating electromagnetic system or an Induced Polarization survey would be required to better define the zones at depth and along strike. A diamond drilling program may be considered as a follow up to these surveys.

Respectfully submitted

J. C. Grant  
August, 2019



---

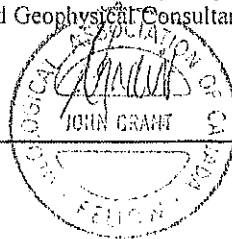
---

CERTIFICATION

I, John Charles Grant, of 108 Kay Crescent, in the City of Timmins, Province of Ontario, hereby certify that:

- 1). I am a graduate of Cambrian College of Applied Arts and Technology, 1975, Sudbury Ontario Campus, with a 3 year Honors Diploma in Geological and Geophysical Technology.
- 2). I have worked subsequently as an Exploration Geophysicist for Teck Exploration Limited, (5 years, 1975 to 1980), and currently as Exploration Manager and Chief Geophysicist for Exsics Exploration Limited, since May, 1980.
- 3). I am a member in good standing of the Certified Engineering Technologist Association, (CET), since 1984.
- 4). I am in good standing as a Fellow of the Geological Association of Canada, (FGAC), since 1986.
- 5). I have been actively engaged in my profession since the 15<sup>th</sup> day of May, 1975, in all aspects of ground exploration programs including the planning and execution of field programs, project supervision, data compilation, interpretations and reports.
- 6). I have no specific or special interest nor do I expect to receive any such interest in the herein described property. I have been retained by the property holders and or their Agents as a Geological and Geophysical Consultant and Contract Manager.

John Charles Grant, CET., FGAC.



APPENDIX A

HEENAN AND MARION REPORT



HEENAN & MARION GRIDS.

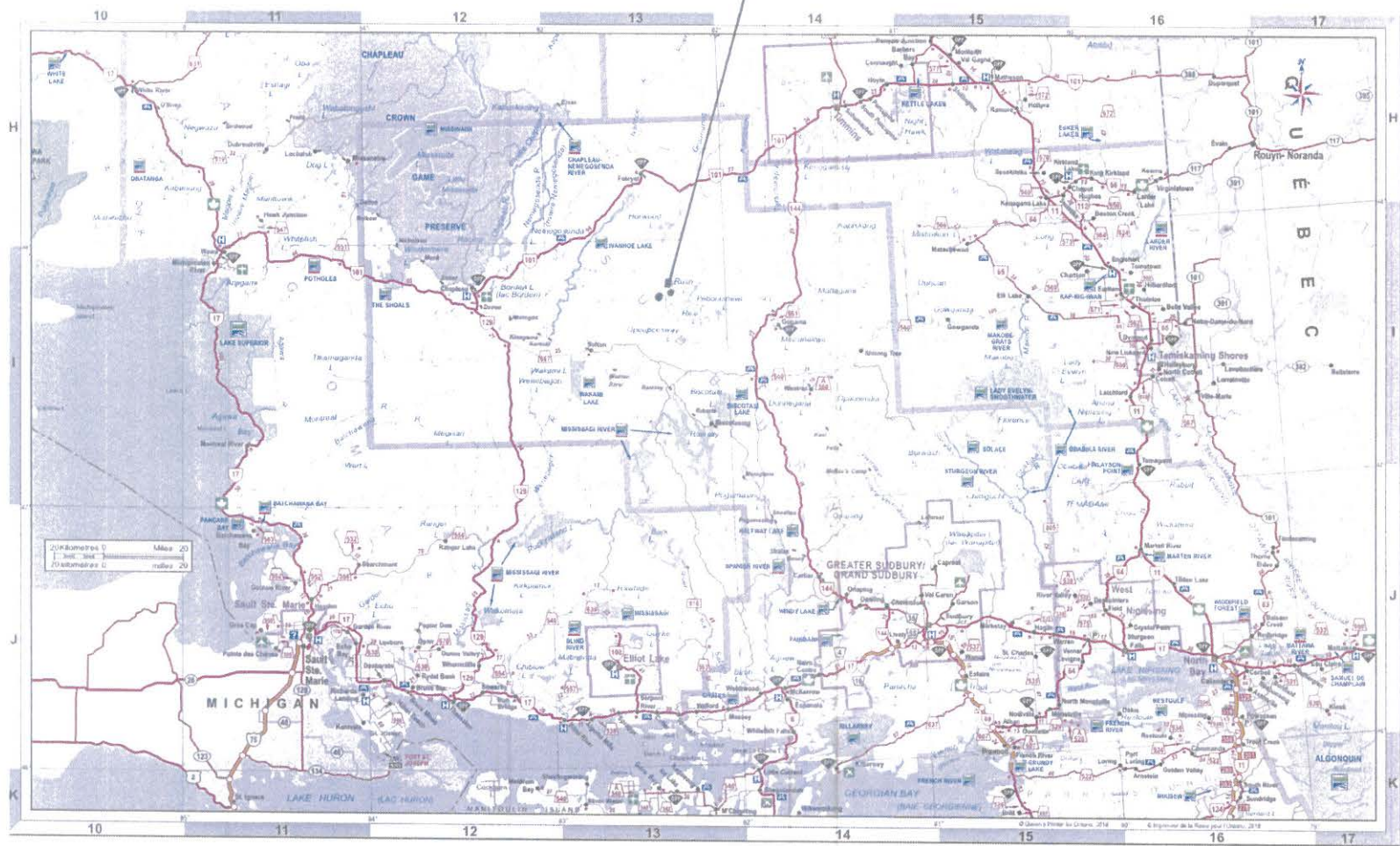


FIGURE 1  
GRID AREAS.

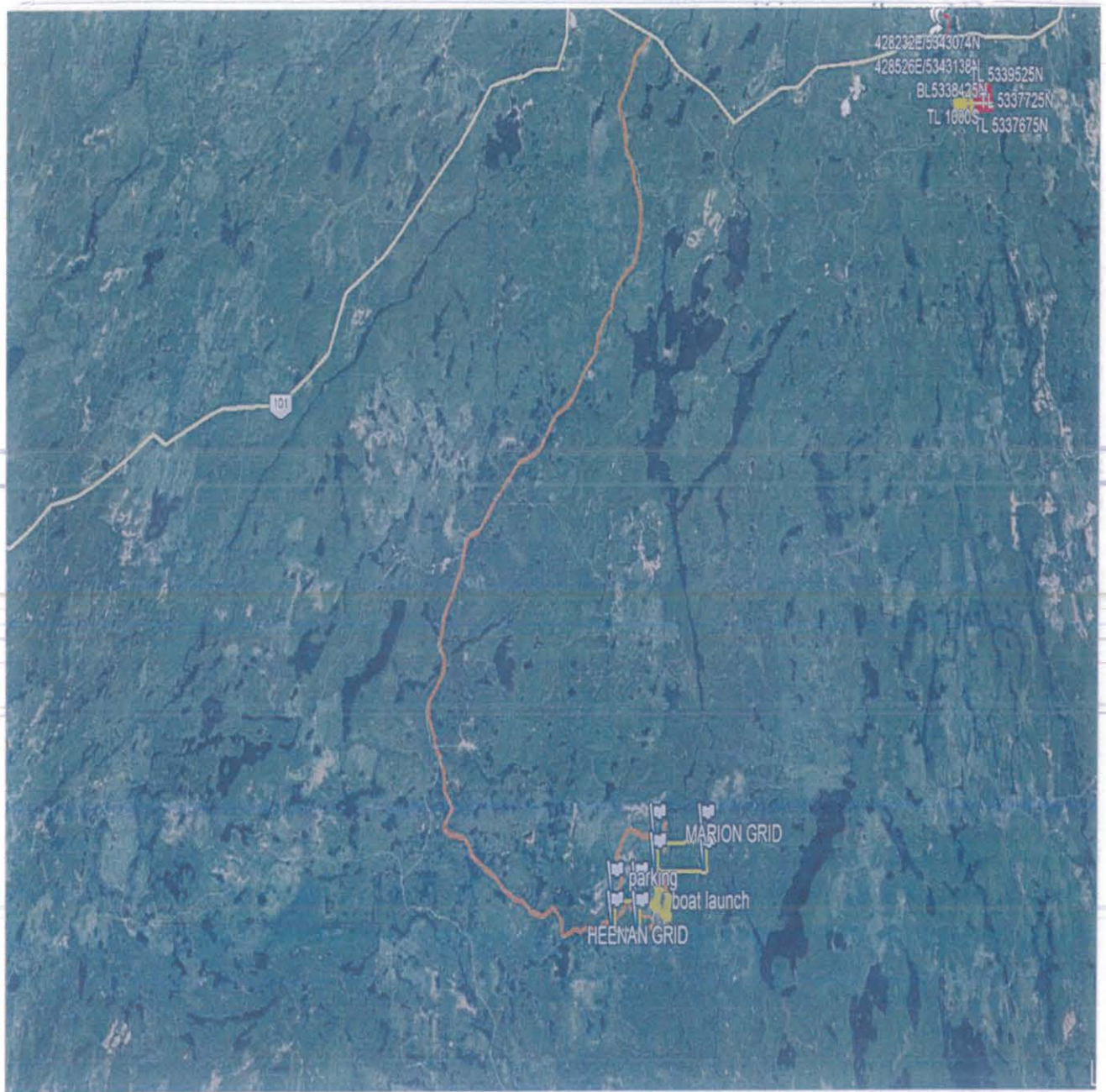
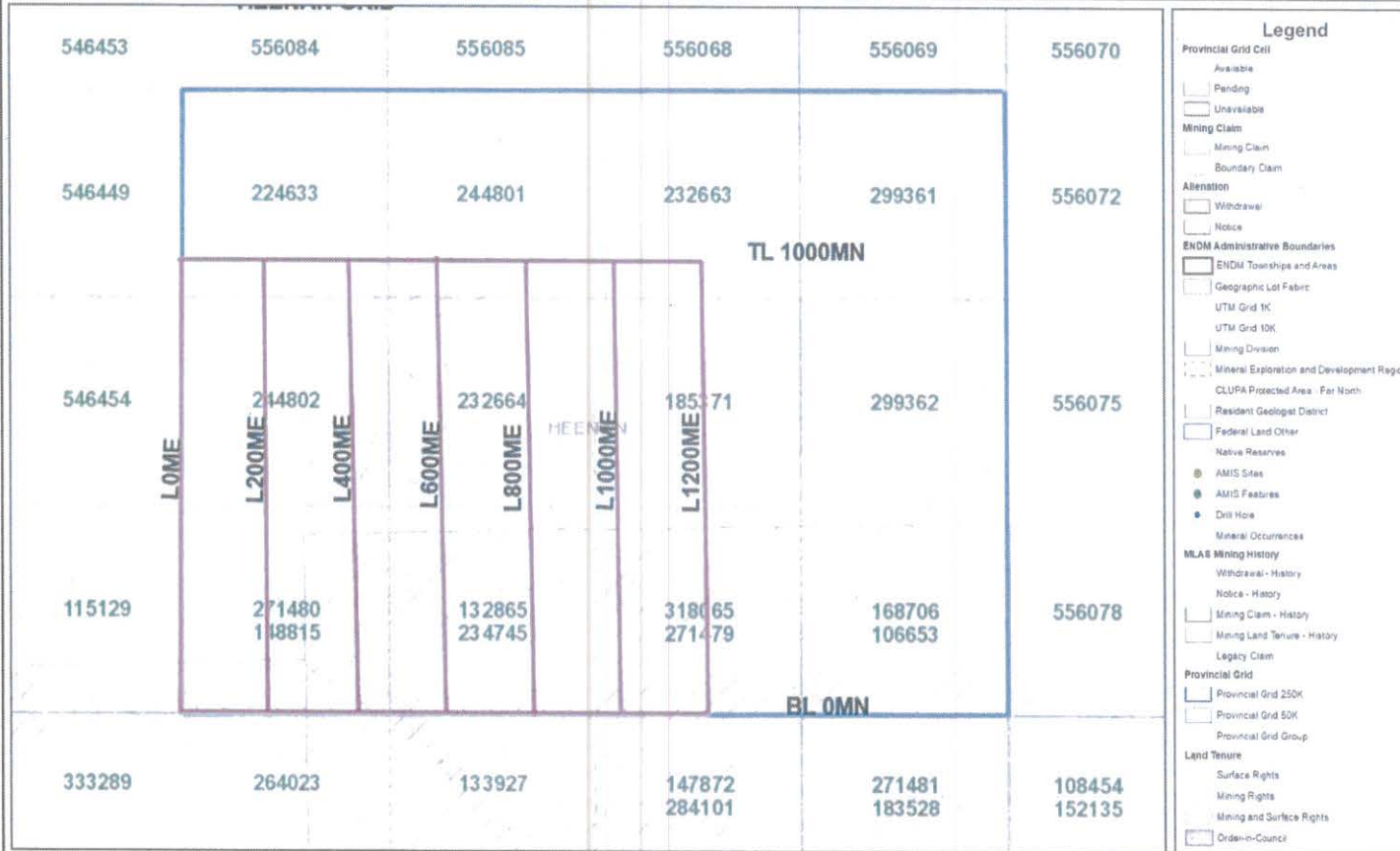


FIGURE 2 ACCESS ROUTE TO GRIDS

### HEENAN GRID LAYOUT

Notes:

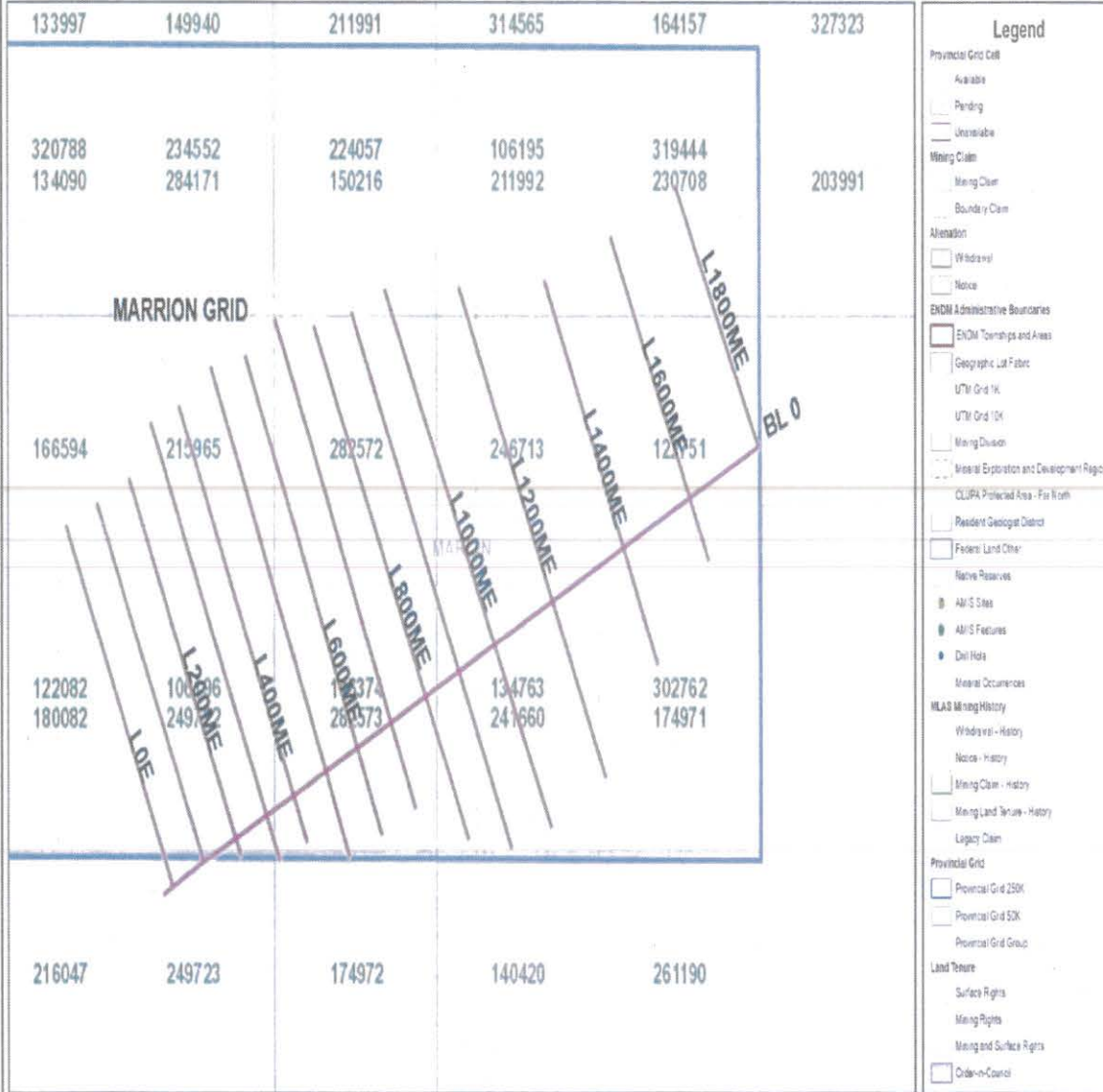


Projection: Web Mercator



The Ontario Ministry of Northern Development and Mines shall not be liable in any way for the use of, or reliance upon, this map or any information on this map. This map should not be used for: navigation, a plan of survey, routes, nor locations.

Imagery Copyright Notices: Ontario Ministry of Natural Resources and Forestry; NASA Landsat Program; First Base Solutions Inc.; Aéro-Photo (1961) Inc.; DigitalGlobe Inc.; U.S. Geological Survey.



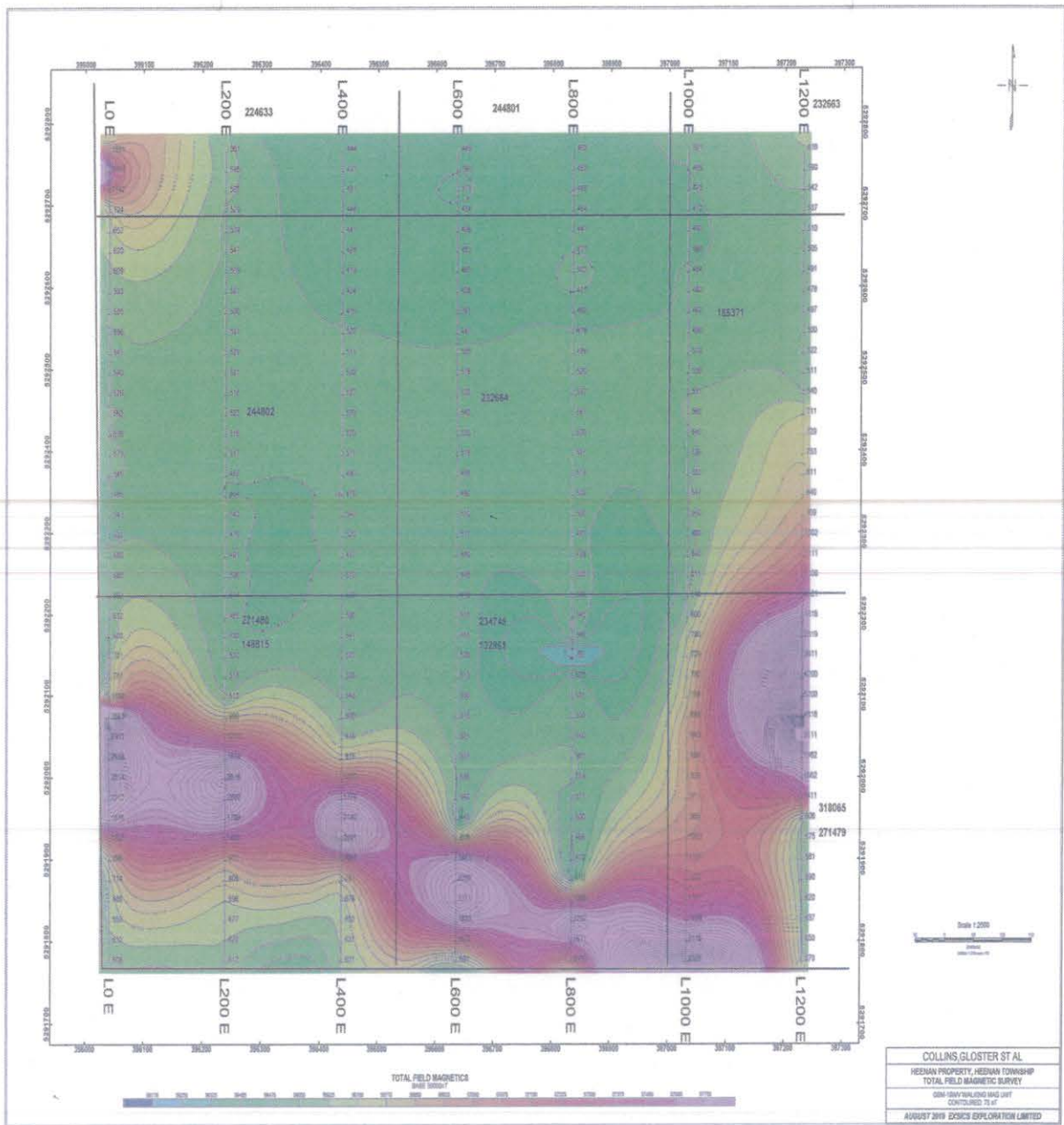
- Legend**
- Provincial Grid Cell
    - Available
    - Pending
    - Unavailable
  - Mining Claim
    - Mining Claim
    - Boundary Claim
  - Alienation
    - Withdrawal
    - Notice
  - ENDM Administrative Boundaries
    - ENDM Townships and Areas
    - Geographic Lot Fabric
    - UTM Grid 1K
    - UTM Grid 10K
    - Mining Division
    - Mineral Exploration and Development Region
  - CLUPA Protected Area - Fox Roth
  - Resident Geologic District
  - Federal Land Other
  - Native Reserves
    - AMS Sites
    - AMS Features
    - Dred Hole
  - Mineral Occurrences
  - MLAS Mining History
    - Withdrawal - History
    - Notice - History
    - Mining Claim - History
    - Mining Land Tenure - History
    - Legacy Claim
  - Provincial Grid
    - Provincial Grid 250K
    - Provincial Grid 50K
    - Provincial Grid Group
  - Land Tenure
    - Surface Rights
    - Mining Rights
    - Mining and Surface Rights
    - Order-in-Council



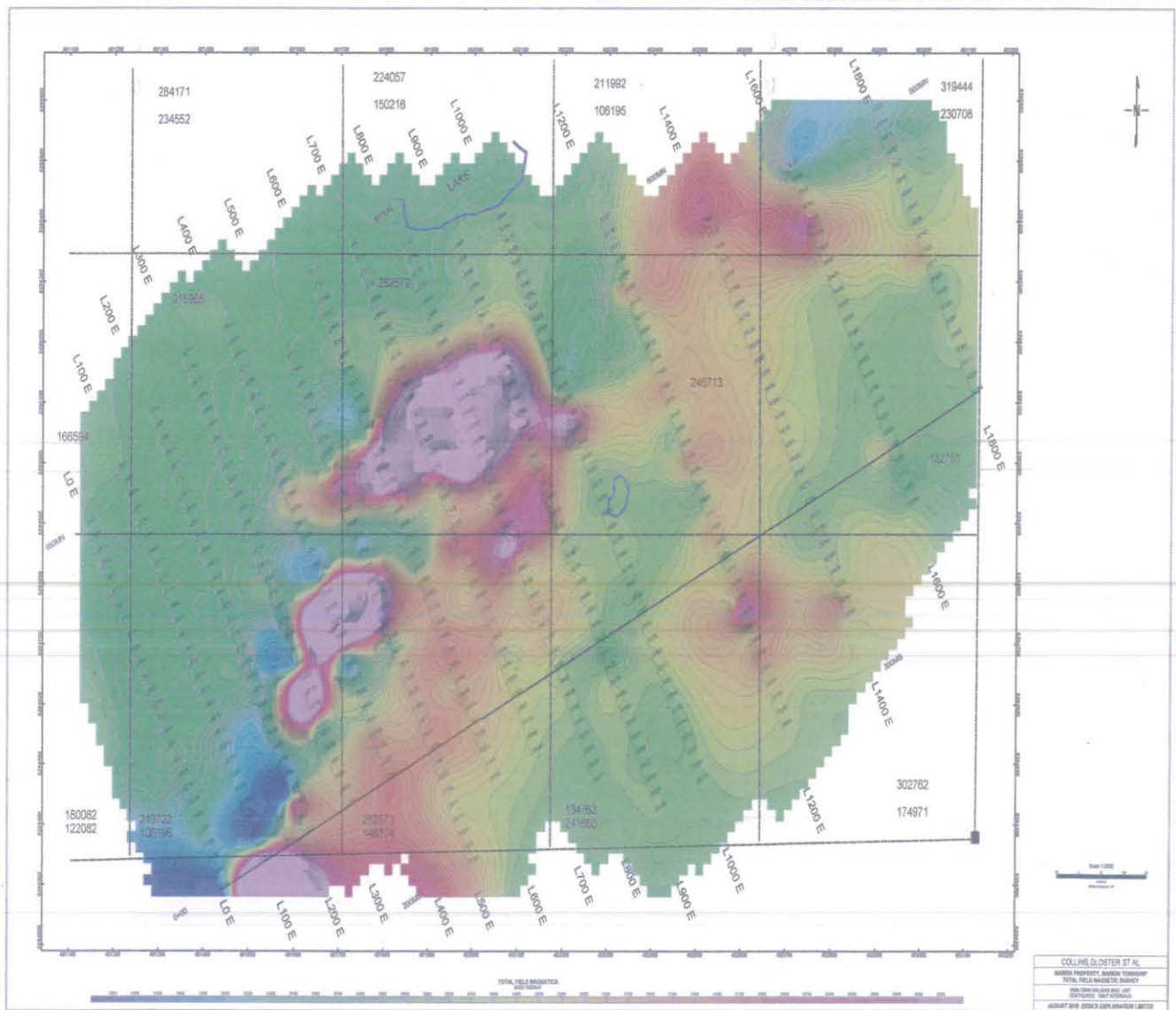
Projection: Web Mercator

The Ontario Ministry of Northern Development and Mines shall not be liable in any way for the use of, or reliance upon, this map or any information on this map. This map should not be used for navigation, a plan of survey, routes, nor locations.

Imagery Copyright Notices: Ontario Ministry of Natural Resources and Forestry, NASA Landsat Program; First Base Solutions Inc.; Aéro-Photo (1961) Inc.; DigitalGlobe Inc.; U.S. Geological Survey.



HEENAN MAGNETIC PLAN MAP



MARRION MAGNETIC PLAN MAP



[Back](#)

## GSM-19 OVERHAUSER MAGNETOMETER/GRADIOMETER SYSTEM

Version 5

[New Case Study](#)

### GSM-19 Overhauser Magnetometer

#### Features of the magnetometer

- Sensitivity = 0.02 nT
- Absolute Accuracy = 0.2 nT
- Sample Rates up to 5 Hz
- Low Power Consumption

#### General magnetometer description

"Overhauser" Once you experience it, you'll never go back to proton. Overhauser technology brings you sensitivities one to two orders of magnitude better than proton, yet in a light weight package. This is because the overhauser magnetometer consumes an order of magnitude less power than proton magnetometer, allowing a lighter weight for batteries.

What is the Overhauser technique? The Overhauser sensor contains the electrons' fluid that has been added to a hydrogen rich in the form of "free radical". The resulting mixture yields a sensor with 5000 times gain in proton polarization. Since the Overhauser polarization effect does not require static magnetic fields, but uses radio frequency fields transparent to protons, measurement can be done concurrently with polarization. The result is a sensor with much greater sensitivity, that can be sampled much more rapidly than the standard proton sensor.



[New! version 6](#)

Walking Gradiometer systems, sampling at rates of once per second or better are possible; Even in cold temperatures of minus 40 zero degrees Celsius and greater, the internal rechargeable battery can still be relied on for a 10 hour day, or longer.

The GSM-19 Overhauser magnetometer is thus truly a State-of-the-Art Magnetometer / VLF system. The GSM-19 offers the data quality, reliability, and extensive list of capabilities, and options, that allow it to meet a very wide spectrum of applications.

## Standard Features of the Magnetometer

The GSM-19 magnetometer console features a real time graphic display of the current profile. In addition digital display of the current reading, current position, and warning messages are provided. The console design, with internal rechargeable battery pack, allows the unit to be completely sealed against the elements. With the built in heater for the display the GSM-19 magnetometer is ready to go wherever your surveys may take you.

Tuning is automatic worldwide, with provision for manual override. In high gradient conditions the GSM-19 magnetometer monitors the signal decay rate and displays a warning message when the gradient becomes too great. Filters for rejection of 50 or 60 Hz noise are provided.

Diurnal corrections may be done in traditional fashion with one magnetometer unit as a base station and a second unit used as the mobile field unit. At the end of the survey the two units are connected and the field unit creates a corrected data file (which still includes the raw data file) based on the temporal drift recorded by the base station.

As a standard feature GSM-19 magnetometer also offer the capability of making tie point measurements for automatic diurnal corrections. To use this feature the operator records a base value and then loops back to this point periodically during the survey to record another measurement, and thus build a file of the drift. In this way a single instrument may be used to make diurnal corrections.

The RS-232 port on the GSM-19 magnetometer will output data as it is collected. This allows interface to GPS loggers that will accept RS232 data. The standard GSM-19 magnetometer may be operated in a remote mode via computer. Memory storage is 512 K in the standard unit, and may be upgraded to 2 MB.

Grid coordinates are stored with either numeric or compass designations. A seven digit number may be used to



position spacing. If the previous line had been adding positions as the operator moved, then on the next line, positions will be subtracted as the operator moves. The operator may also easily manually enter his grid position for cases where gaps in the line are necessary.

#### **Equatorial Sensor for magnetometer**

In equatorial regions, generally 30 degrees north or south of the equator, magnetic fields reach a nearly horizontal angle with the earth's surface. This requires a conventional proton sensor to be used in an inverted position, and requires the operator to collect data only on east/west lines to maximize the magnetic signal. This is a problem that is a magnitude worse for cesium magnetometers.

The Overhauser technique allows design of an optional sensor completely free of this problem, a sensor that requires no orientation no matter what the latitude of your exploration. This can be a major advantage when working in diverse areas around the world, and when needing to train local operators whose first language may not be your own.

#### **"Walking Mag Option"**

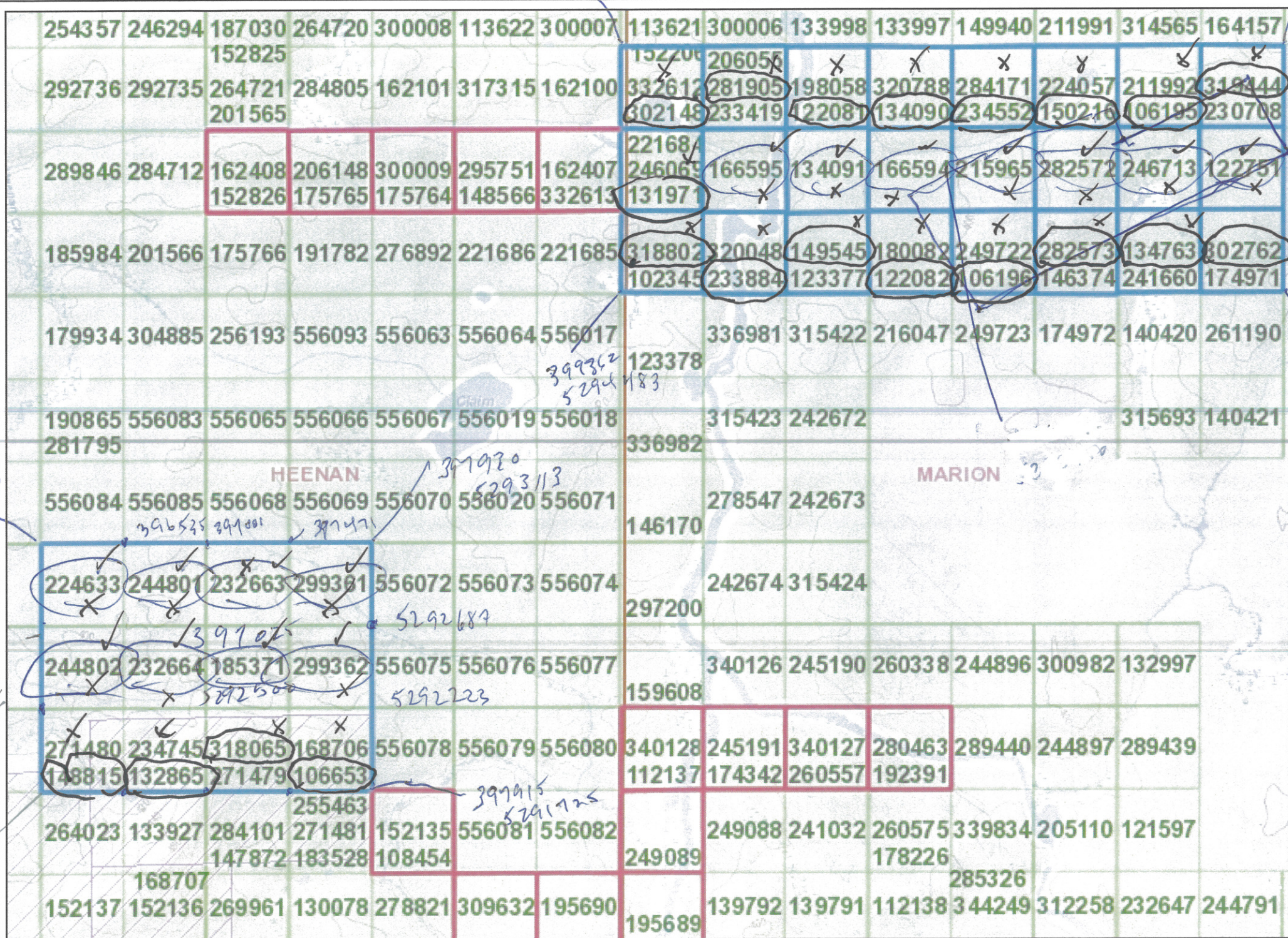
The GSM-19 magnetometer is the first to offer the "Walking Mag" concept. The reason for this is the outstanding advantage the Overhauser sensor has in this application. With the "Walking Mag" option the operator may select a sample rate of up to two samples per second. At this rate Overhauser technology can still deliver a noise level that is quite acceptable, about 0.1 nT, and the lower power consumption means that a full day of surveying can still be done with just the internal rechargeable battery.

As shown in Figure 1 the near continuous data from the "Walking Mag" technique provides increased definition for any type of survey. For surveys with densely spaced grids, such as archaeological or environmental surveys, field productivity is markedly improved, typically by a factor of five.

When in the Walking Mag mode the operator still presets his line and station spacing. When a known station is passed a grid update key is pressed and the current reading is tagged with this station. Readings taken between these marked positions are then linearly interpolated for their grid position when data is transferred to a computer.

A further refinement of the Walking Mag concept is the Hip Chain Option. This option uses a hip chain to trigger the magnetometer to take a reading at discrete intervals. A Hip Chain consists of an optical encoder that records revolutions of a wheel wound with disposable cotton string. The string is tied off at the beginning of a line, and as the operator walks the string is pulled out, and the magnetometer is automatically triggered. With the Hip Chain option sample rates up to

403127  
5295867



### Legend

**Provincial Grid Cell**

- Available
- Pending
- Unavailable

**Mining Claim**

- Mining Claim
- Boundary Claim

**Alienation**

- Withdrawal
- Notice

**ENDM Administrative Boundaries**

- ENDM Townships and Areas
- Geographic Lot Fabric
- UTM Grid 4K
- UTM Grid 10K
- Mining Division
- Mineral Exploration and Development Region
- CLUPA Protected Area - Far North

**Resident Geologist District**

- Resident Geologist District

**Federal Land Other**

- Federal Land Other

**Native Reserves**

- Native Reserves

**AMIS Sites**

- AMIS Sites
- AMIS Features
- Drill Hole
- Mineral Occurrences

**MLAS Mining History**

- Withdrawal - History
- Notice - History
- Mining Claim - History
- Mining Land Tenure - History
- Legacy Claim

**Provincial Grid**

- Provincial Grid 250K
- Provincial Grid 50K
- Provincial Grid Group

**Land Tenure**

- Surface Rights
- Mining Rights
- Mining and Surface Rights
- Order-in-Council

52 Km Hwy 100 west  
Down Rd  
to  
Junction

19.7 km  
SE along  
2nd Rd.  
to W side  
of Heenan  
Grid

9.8 km  
N-NE  
to  
MARION  
BLOCK

2.9 km  
River  
from BL

902  
440

ATQ  
to River

6.5m - 19m

W22 Long M44  
DWT



Projection: Web Mercator



The Ontario Ministry of Northern Development and Mines shall not be liable in any way for the use of, or reliance upon, this map or any information on this map. This map should not be used for: navigation, a plan of survey, routes, nor locations.

Imagery Copyright Notices: Ontario Ministry of Natural Resources and Forestry; NASA Landsat Program; First Base Solutions Inc.; Aéro-Photo (1961) Inc.; DigitalGlobe Inc.; U.S. Geological Survey.

396031  
#1200  
397231

TC1000  
396041  
529276

396031  
5291765

399915  
5291725

HEENAN

MARION