

We are committed to providing [accessible customer service](#).

If you need accessible formats or communications supports, please [contact us](#).

Nous tenons à améliorer [l'accessibilité des services à la clientèle](#).

Si vous avez besoin de formats accessibles ou d'aide à la communication, veuillez [nous contacter](#).

Prospectors Report

Mining Claims 309355 and 251456

Mining Claims 119466 and 119465

Summary of Field Work

Aug 29/30 2019

Submitted by David J Ross

Field work in 2019 was conducted by David J Ross (Lic. C39006) of 17 Kinzie Lane, Barrie, Ontario L4M 6A2, with Greg Jones, Geologist of Toronto. Randy Markewitz, a local Buckhorn resident accompanied us in the field on Aug 30, 2019.

### Location

Claims visited are now part of the new provincial claim grid. Figure 1 is a map showing mining claims, as printed using MLAS.

Claim 309335 is located in Lots 1,2,3 of Con 6 and 7 Cavendish Township.

Claim 251456 is located in Lots 2,3,4 Con 6 and 7 Cavendish Township.

Contiguous claims were visited on Aug 29, 2019.

Claim 119466 is located in Lot 35 of Con 6 Galway Township and Lot 1 Con 6 Cavendish Township.

Claim 119465 is located in Lot 1 Con 6 Cavendish Township.

Contiguous claims were visited on Aug 30, 2019.

### General Area

Site locations selected for sampling at the northern most claims 309355 and 251456 is an area where geology reflects contacts and alteration predominantly of meta sediment schists in contact with pegmatite mineralization. The southern most claims are gneissic and pegmatite mineralization was not encountered.

### Data Collection

Information collected is summarized in table 1 and followed by geological site descriptions. Table 1 identifies:

1/UTM location, and elevation using a Garmin GPS

2/scintillometer readings

3/brief description of rock encountered at sites

4/matching photograph numbers for rock and terrain at sites

\*photographs in electronic format are part of this submission.

Table 1. Cavendish prospecting sites of Aug 29-30, 2019.

Claim	Site	UTM (17T)		Elev. (ft)	Scint. Total	Scint. Range	Th	Geol/Min	Photo No.s
251456	168	0704925	4956179	977	9.5	58-84	3.5	Gneiss, qtz lenses, garnet	334-343
	169	0704884	4956305	1001	3.1	62-95	1.1	Peg (t,q,f)	344-346
309335	170	0704816	4956327		11.2	97-168	4.1	Qtz-Feldspar ridge, tour, mica	347-355
	171	0704824	4956291	1017	11.2	78-130	4.1	Peg & gneiss, tour	359-360
	172	0704782	4956295	1014	7.1	77-119	2.7	Gneiss (b,q,f) qtz, garnet	361-362, 365, 367
	173	0704744	4956249	1017	7.1	77-116	2.6	Gneiss (b,q,f) intruded Peg	368-375, 377-378
119465	178	0704577	4955295	1022	8.7	27-56	3.2	Gneiss (b,q,f) qtz lenses	390-394
	179	0704548	4955317	1038	5.4	04-85	2.0	Gneiss	395, 398, 401
					5.5	32-67	2.1	Gneiss(b,q,f)	396
	180	0704583	4955362	1027	14.3	40-80	5.3	Gneiss (b,q,f) qtz lenses	402-404
	181	0704557	4955383	1026	6.3	41-71	2.4	Gneiss (b,q,f) qtz lenses	405-406, 409-410
	182	0704529	4955434	1034	6.3	43-81	2.3	Gneiss (b,q,f) 1-2 mm orange garnets, qtz lenses	411-413
119466	183	0704436	4955175	993	5.2	49-81	3.1	Gneiss (b,q,f)	414-415, 420-421
	184	0704313	4955213	1012	5.5	43-63	2.0	Gneiss (b,q,f)	422-427
	185	0704339	4955227	1016	4.7	50-80	1.9	Gneiss (b,q,f)	428-433
	186	0704350	4955254	1010	5.5	38-58	2.1	Gneiss (b,q,f)	434-436

\* Note ... Scintillometer readings when compared to previous prospecting results for the area appear to be low. For this reason results should not be used for comparison outside this report.

## Geological/Mineral Details at Sites

Date: August 29, 2019

### Claim 251456

Site: 168

Rock Type: grey garnetiferous biotite quartz feldspar gneiss. Medium grained. Sugary feel. Ten to fifteen percent garnet up to 3/4 inch in diameter. Minor quartz lenses up to 3 inches wide and 2 feet in length. Moderately to strongly foliated and in places folds and flow structures.

Outcrop: 72ft shallow sloping ridge trending 68deg E ending in swamp. Width: 42ft.

Remarks: Along northern edge in a five foot ridge medium to coarse grained tourmaline quartz feldspar pegmatite lies in contact with the gneiss. Minor mica.

Site:169

Rock Type: tourmaline quartz feldspar pegmatite with minor biotite. Medium to coarse grained.

Outcrop: gently sloping ridge with maximum height 15 ft. Most exposures in 3 to 4 foot range. 40 foot by 40 foot area.

### Claim 309335

Site: 170

Rock Type: medium to coarse grained tourmaline quartz feldspar ridge. Trace mica. Five to 50 percent Tourmaline. Feldspar: both white and pink.

Outcrop: 20 by 10 foot area. Up to 4 feet of vertical exposure. Ridge trends 130 deg.

Site #: 171

Rock Type: medium to very coarse grained tourmaline quartz feldspar pegmatite. Minor sugary, biotite quartz feldspar gneiss inclusions. Tourmaline concentrations up to 70% locally, although typically 10 to 20 percent.

Outcrop: 2 by 4 foot exposure.

Site#: 172

Rock Type: fine to medium grained biotite quartz feldspar gneiss. Sugary. Minor quartz lenses

Foliation: Moderate. Strikes 26 deg. Dips 80deg to south.

Outcrop: 4 to 6 foot high ridge. 40 feet long.

Stie #: 173

Rock Type: biotite quartz feldspar gneiss intruded by medium to coarse grained tourmaline quartz feldspar pegmatite with minor mica. Towards the northwest; 4 feet of gneiss, 8 feet of pegmatite, 17 feet of gneiss, 5 feet of pegmatite. Gneiss is sugary and medium grained.

Contacts: vary from abrupt to gradational and irregular. Tourmaline concentrations over 50 percent in place along contacts.

Foliation: gneiss strikes 216 deg. Pegmatite dikes trend roughly 200 deg.

Outcrop: 34 feet by 20 feet,

Date: August 30., 2019

Claim 119465

Site:178

Rock Type: grey biotite quartz feldspar gneiss. Fine to medium grained. Minor quartz blebs and lenses up to 3 feet long and 1 inch wide.

Foliation: Strong. Strikes 14 deg. Dip is vertical.

Outcrop: 5 foot exposures on a 40 foot wide ridge. Total height of approximately 10 feet.

Site: 179

Rock Type: grey biotite quartz feldspar gneiss. Fine to medium grained.

Foliation: not well defined.

Outcrop: gently sloping ridge. 60 by 25 feet.

Site: 180

Rock Type: grey biotite quartz feldspar gneiss. Minor quartz blebs and lenses.

Foliation: strikes 43 deg. Dips 80 deg to east.

Outcrop: circular 20 foot in diameter. 6 foot high.

Sites: 181 and 182

Rock Type: biotite quartz feldspar gneiss. Sugary feel. Fine to medium grained. Orange to pink feldspar. Minor quartz blebs and lenses. Most lenses between 6 inches and 1 foot long, and 2 inches wide. Trace orange garnets 1 to 2 mm.

Foliation: moderate. Strikes 40 deg.

Outcrop: Large. 200 feet by 100 feet.

Claim119466

Site: 183

Rock Type: grey biotite quartz feldspar gneiss. Medium grained

Foliation: moderate. Strikes 358 deg.

Outcrop: 30 foot wide oval shaped ridge. 5 foot high.

Sites: 184 and 185

Rock Type: biotite quartz feldspar gneiss. Fine to medium grained. Sugary feel. Grey to orange when oxidized. Minor quartz lenses and blebs.

Outcrop. Broad outcrop area at edge of swamp.

Site: 186

Rock Type: Biotite quartz feldspar gneiss. Sugary feel.

Foliation: Moderate. Strikes 360 deg.

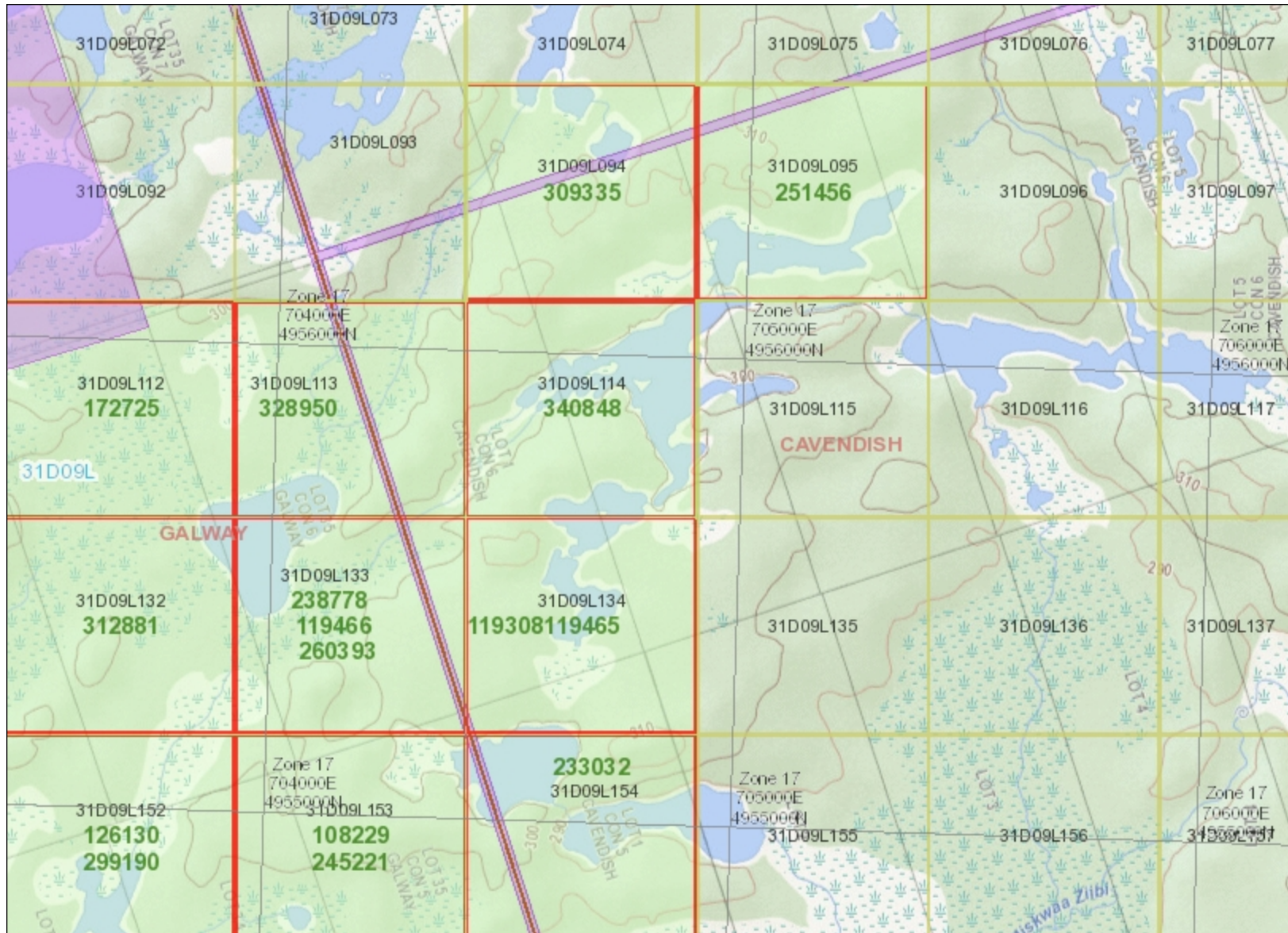
Outcrop: 6 by 10 foot area.

### Future Prospecting

Field work shows pegmatite units in the northern contiguous claims of 251456, and 309355. Future plans in this area include additional work using scintillometer and mineral sampling for assay.

Results and plans for future exploration will be discussed with the MNDM Regional Geologist in Tweed.





### Legend

- Provincial Grid Cell**
  - Available
  - Pending
  - Unavailable
- Mining Claim**
  - Mining Claim
  - Boundary Claim
- Alienation**
  - Withdrawal
  - Notice
- ENDM Administrative Boundaries**
  - ENDM Townships and Areas
  - Geographic Lot Fabric
  - UTM Grid 1K
  - UTM Grid 10K
  - Mining Division
  - Mineral Exploration and Development Region
  - CLUPA Protected Area - Far North
  - Resident Geologist District
  - Federal Land Other
  - Native Reserves
- AMIS Sites**
  - AMIS Sites
  - AMIS Features
  - Drill Hole
  - Mineral Occurrences
- MLAS Mining History**
  - Withdrawal - History
  - Notice - History
  - Mining Claim - History
  - Mining Land Tenure - History
  - Legacy Claim
- Provincial Grid**
  - Provincial Grid 250K
  - Provincial Grid 50K
  - Provincial Grid Group
- Land Tenure**
  - Surface Rights
  - Mining Rights
  - Mining and Surface Rights
  - Order-in-Council



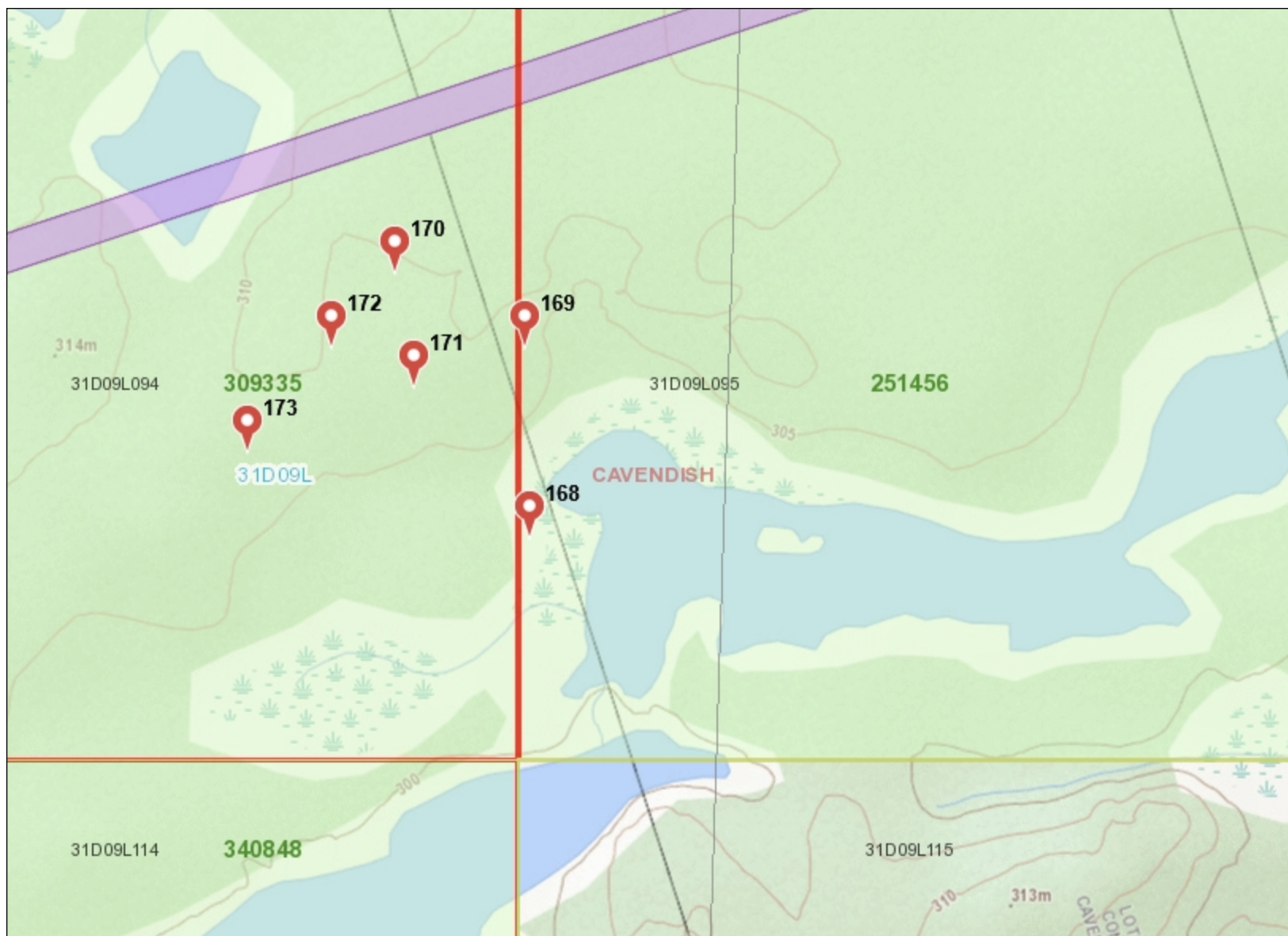
Projection: Web Mercator



The Ontario Ministry of Northern Development and Mines shall not be liable in any way for the use of, or reliance upon, this map or any information on this map. This map should not be used for: navigation, a plan of survey, routes, nor locations.

Imagery Copyright Notices: Ontario Ministry of Natural Resources and Forestry; NASA Landsat Program; First Base Solutions Inc.; Aéro-Photo (1961) Inc.; DigitalGlobe Inc.; U.S. Geological Survey.





### Legend

- Provincial Grid Cell**
  - Available
  - Pending
  - Unavailable
- Mining Claim**
  - Mining Claim
  - Boundary Claim
- Alienation**
  - Withdrawal
  - Notice
- ENDM Administrative Boundaries**
  - ENDM Townships and Areas
  - Geographic Lot Fabric
  - UTM Grid 1K
  - UTM Grid 10K
  - Mining Division
  - Mineral Exploration and Development Region
  - CLUPA Protected Area - Far North
  - Resident Geologist District
  - Federal Land Other
  - Native Reserves
- AMIS Sites**
  - AMIS Sites
  - AMIS Features
  - Drill Hole
  - Mineral Occurrences
- MLAS Mining History**
  - Withdrawal - History
  - Notice - History
  - Mining Claim - History
  - Mining Land Tenure - History
  - Legacy Claim
- Provincial Grid**
  - Provincial Grid 250K
  - Provincial Grid 50K
  - Provincial Grid Group
- Land Tenure**
  - Surface Rights
  - Mining Rights
  - Mining and Surface Rights
  - Order-in-Council



Projection: Web Mercator



The Ontario Ministry of Northern Development and Mines shall not be liable in any way for the use of, or reliance upon, this map or any information on this map. This map should not be used for: navigation, a plan of survey, routes, nor locations.

Imagery Copyright Notices: Ontario Ministry of Natural Resources and Forestry; NASA Landsat Program; First Base Solutions Inc.; Aéro-Photo (1961) Inc.; DigitalGlobe Inc.; U.S. Geological Survey.





### Legend

- Provincial Grid Cell**
  - Available
  - Pending
  - Unavailable
- Mining Claim**
  - Mining Claim
  - Boundary Claim
- Alienation**
  - Withdrawal
  - Notice
- ENDM Administrative Boundaries**
  - ENDM Townships and Areas
  - Geographic Lot Fabric
  - UTM Grid 1K
  - UTM Grid 10K
  - Mining Division
  - Mineral Exploration and Development Region
  - CLUPA Protected Area - Far North
  - Resident Geologist District
  - Federal Land Other
  - Native Reserves
- AMIS Sites**
  - AMIS Sites
  - AMIS Features
  - Drill Hole
  - Mineral Occurrences
- MLAS Mining History**
  - Withdrawal - History
  - Notice - History
  - Mining Claim - History
  - Mining Land Tenure - History
  - Legacy Claim
- Provincial Grid**
  - Provincial Grid 250K
  - Provincial Grid 50K
  - Provincial Grid Group
- Land Tenure**
  - Surface Rights
  - Mining Rights
  - Mining and Surface Rights
  - Order-in-Council



Projection: Web Mercator



The Ontario Ministry of Northern Development and Mines shall not be liable in any way for the use of, or reliance upon, this map or any information on this map. This map should not be used for: navigation, a plan of survey, routes, nor locations.

Imagery Copyright Notices: Ontario Ministry of Natural Resources and Forestry; NASA Landsat Program; First Base Solutions Inc.; Aéro-Photo (1961) Inc.; DigitalGlobe Inc.; U.S. Geological Survey.

