

We are committed to providing [accessible customer service](#).

If you need accessible formats or communications supports, please [contact us](#).

Nous tenons à améliorer [l'accessibilité des services à la clientèle](#).

Si vous avez besoin de formats accessibles ou d'aide à la communication, veuillez [nous contacter](#).



CANADIAN EXPLORATION SERVICES LTD

Golden Valley Mines Ltd.

**Q2690 – Cook Lake Prospect
Grass Roots Prospecting Program**

**C Jason Ploeger, P.Geo.
September 16, 2019**



Golden Valley Mines Ltd. **Mines de la Vallée de l'Or ltée**

Abstract

CXS was contracted to perform prospecting on the Cook Lake Prospect for Golden Valley Mines Ltd. The survey was designed to locate 2 historic shafts and to document any additional points of interest encountered during prospecting. Outcrops encountered had a representative rock sample taken.

Golden Valley Mines Ltd.

**Q2690 – Cook Lake Prospect
Grass Roots Prospecting Program**

**C Jason Ploeger, P.Geol.
September 16, 2019**

Contributions by Melanie Postman (GIT) & Andrew Salerno (B.Sc.)

TABLE OF CONTENTS

1.0 Survey Details	5
1.1 Project Name	5
1.2 Client	5
1.3 Location	5
1.4 Access	6
1.5 Ownership	6
2.0 Prospecting	7
2.1 Survey Log	7
2.2 Personnel	7
2.3 Traverse Specifications	7
3.0 Sample results	9
3.1 Summary of Samples Collected	9
3.2 Day 1 Sample Details & Images — September 16, 2019	11
3.2 Day 2 Sample Details & Images — September 17, 2019	57

LIST OF APPENDICES

- APPENDIX A: STATEMENT OF QUALIFICATIONS**
APPENDIX B: INSTRUMENT SPECIFICATIONS
APPENDIX C: LIST OF MAPS (IN MAP POCKET)

LIST OF TABLES AND FIGURES

Figure 1: Location of the Cook Lake Prospect	5
Figure 2: Prospecting Traverses	8
Figure 3: Historic Scott-Kirkland Gold Mine #2 Shaft	11
Figure 4: Day 1 Samples and Traverse Tracks with the Shaft Located	12
Figure 5: Picture of Sample R347758	13
Figure 6: Picture of Sample R347758	14
Figure 7: Picture of Sample R347759	15
Figure 8: Picture of Sample R347759	16
Figure 9: Picture of Sample R347760	17
Figure 10: Picture of Sample R347760	18
Figure 11: Picture of Sample R347761	19
Figure 12: Picture of Sample R347761	20
Figure 13: Picture of Sample R347762	21
Figure 14: Picture of Sample R347762	22
Figure 15: Picture of Sample R347763	23
Figure 16: Picture of Sample R347763	24

Figure 17: Picture of Sample R347764	25
Figure 18: Picture of Sample R347764	26
Figure 19: Picture of Sample R347765	27
Figure 20: Picture of Sample R347765	28
Figure 21: Picture of Sample R347766	29
Figure 22: Picture of Sample R347766	30
Figure 23: Picture of Sample R347767	31
Figure 24: Picture of Sample R347767	32
Figure 25: Picture of Sample R347768	33
Figure 26: Picture of Sample R347768	34
Figure 27: Picture of Sample R347707	35
Figure 28: Picture of Sample R347707	36
Figure 29: Picture of Sample R347708	37
Figure 30: Picture of Sample R347708	38
Figure 31: Picture of Sample R347709	39
Figure 32: Picture of Sample R347709	40
Figure 33: Picture of Sample R347710	41
Figure 34: Picture of Sample R347710	42
Figure 35: Picture of Sample R347711	43
Figure 36: Picture of Sample R347711	44
Figure 37: Picture of Sample R347712	45
Figure 38: Picture of Sample R347712	46
Figure 39: Picture of Sample R347713	47
Figure 40: Picture of Sample R347713	48
Figure 41: Picture of Sample R347714	49
Figure 42: Picture of Sample R347714	50
Figure 43: Picture of Sample R347715	51
Figure 44: Picture of Sample R347715	52
Figure 45: Picture of Sample R347716	53
Figure 46: Picture of Sample R347716	54
Figure 47: Picture of Sample R347717	55
Figure 48: Picture of Sample R347717	56
Figure 49: Historic Scott-Kirkland Gold Mine #1 Shaft	57
Figure 50: Day 2 Samples and Traverse Tracks with the Shaft Located.....	58
Figure 51: Picture of Sample R347718	59
Figure 52: Picture of Sample R347718	60
Figure 53: Picture of Sample R347719	61
Figure 54: Picture of Sample R347719	62
Figure 55: Picture of Sample R347720	63
Figure 56: Picture of Sample R347720	64
Figure 57: Picture of Sample R347721	65



Figure 58: Picture of Sample R347721	66
Figure 59: Picture of Sample R347722	67
Figure 60: Picture of Sample R347722	68
Figure 61: Picture of Sample R347723	69
Figure 62: Picture of Sample R347723	70
Figure 63: Picture of Sample R347769	71
Figure 64: Picture of Sample R347769	72
Figure 65: Picture of Sample R347770	73
Figure 66: Picture of Sample R347770	74
Figure 67: Picture of Sample R347771	75
Figure 68: Picture of Sample R347771	76
Figure 69: Picture of Sample R347772	77
Figure 70: Picture of Sample R347772	78
Figure 71: Picture of Sample R347773	79
Figure 72: Picture of Sample R347773	80
Figure 73: Picture of Sample R347774	81
Figure 74: Picture of Sample R347774	82
Table 1: Cell Claims and Claim Holder.....	6
Table 2: Prospecting Log	7
Table 3: Summary of Samples Collected	10

1.0 SURVEY DETAILS

1.1 PROJECT NAME

This project is known as the **Cook Lake Prospect**.

1.2 CLIENT

GOLDEN VALLEY MINES LTD.

2864, Chemin Sullivan
Val-d'Or, Québec
J9P 0B9

1.3 LOCATION

The Cook Lake Prospect is in Grenfell Township, approximately 10 km west of Kirkland Lake, Ontario. The survey area covers multiple cell claims located within the Larder Lake Mining Division of Ontario. The prospecting targets cover cell claims 183750, 121505, 172960, and 259224 with traverses crossing cells 256869, 244293, 299429, 318352 and 299430.

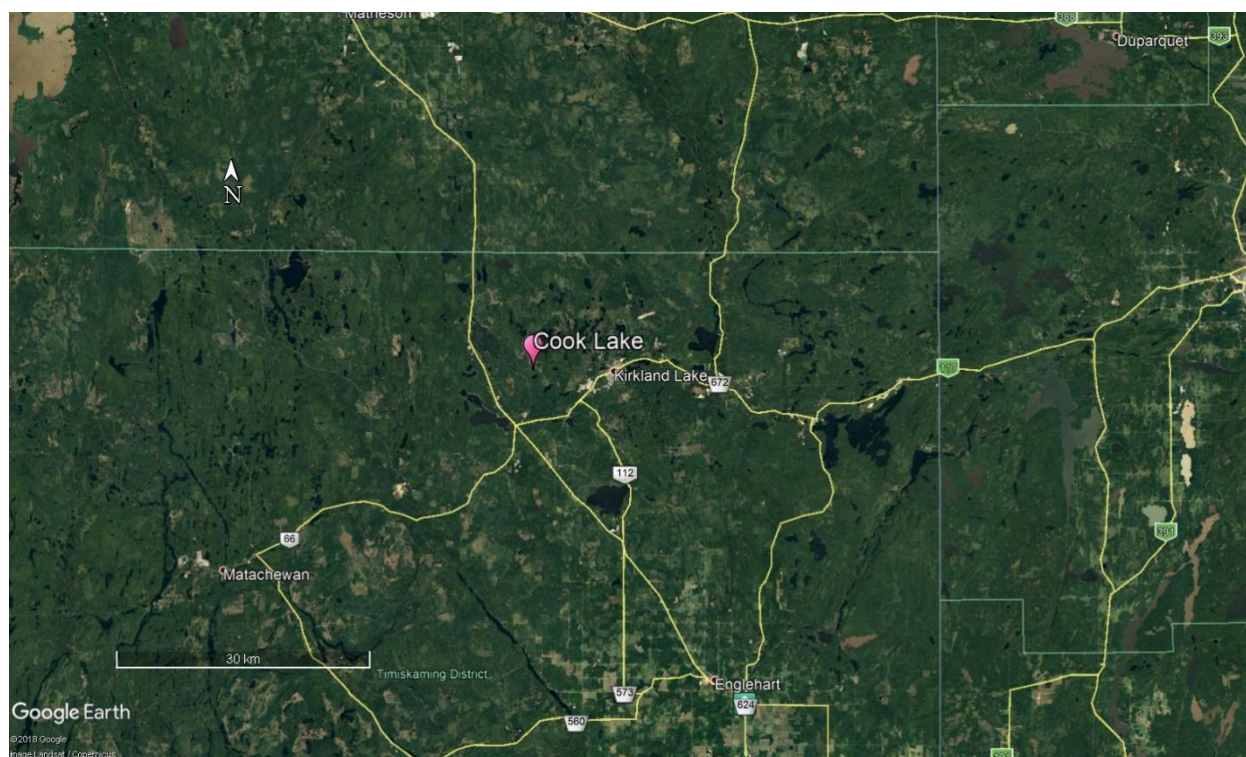


Figure 1: Location of the Cook Lake Prospect

1.4 ACCESS

The property was accessed with a 4x4 truck by travelling west from Larder Lake on highway 66 for approximately 30 km. Then Goldthorpe Road was taken to travel west for approximately 6 km to reach an unnamed road. This unnamed road was taken north for approximately 2 km to reach the Cook Lake Prospecting area. At which point an ATV was needed to access the rest of the prospecting area.

1.5 OWNERSHIP

Claim Number	Provincial Cell ID	Holder	Township
183750	42A01G036	Golden Valley Mines Ltd.	Grenfell
121505	42A01G035	Golden Valley Mines Ltd.	Grenfell
172960	42A01G094	Golden Valley Mines Ltd.	Grenfell
259224	42A01G114	Golden Valley Mines Ltd.	Grenfell
299429	42A01G055	Golden Valley Mines Ltd.	Grenfell
318352	42A01G056	Golden Valley Mines Ltd.	Grenfell
299430	42A01G076	Golden Valley Mines Ltd.	Grenfell
244293	42A01G075	Golden Valley Mines Ltd.	Grenfell
256869	42A01G095	Golden Valley Mines Ltd.	Grenfell

Table 1: Cell Claims and Claim Holder

2.0 PROSPECTING

2.1 SURVEY LOG

Date	Description
September 16, 2019	Mobilization to site. A total of 22 samples were collected in the northeast section (samples 347707-347717 and 347758-347768).
September 17, 2019	12 samples collected in the southwest section (samples 347718-347723 and 347769-347774). Demobilization.

Table 2: Prospecting Log

2.2 PERSONNEL

Prospecting was performed by Bruce Lavalley and Claudia Moraga of Britt, Ontario.

2.3 TRAVERSE SPECIFICATIONS

Work on the Cook Lake prospect included the targeting of two historic shaft areas and documenting any additional points of interest encountered during prospecting. One prospecting crew was sent to the field for this project. They were to attempt to locate and sample the shaft areas and prospect the surrounding area, collecting rocks at any outcrop encountered. The traverse was chosen at random by the crew to maximize property coverage. Traverse tracks were recorded using a Garmin GPS and are shown in Figure 2.

At each sample site, a long bright orange ribbon was hung with only the sample number listed in black marker. Each sample was taken under it's corresponding ribbon.

Using a rock hammer, rocks were broken up and sampled. Each sample was placed in a plastic sampling bag with a sample tag and taped to seal. Sample numbers were recorded on the sampling bags. The samples were then put into a packsack for transportation.

The location of each sample was recorded with a handheld GPS and included in a traverse map. An image of the GPS with the sample's coordinates was taken at each sample site with the sample and number included in the photo.

At the end of the day, all samples were put into white "rice" bags. These bags were sealed and brought back to Larder Lake to be cut and characterized. The GPS data which identified sample locations and traverse routes were downloaded for mapping.

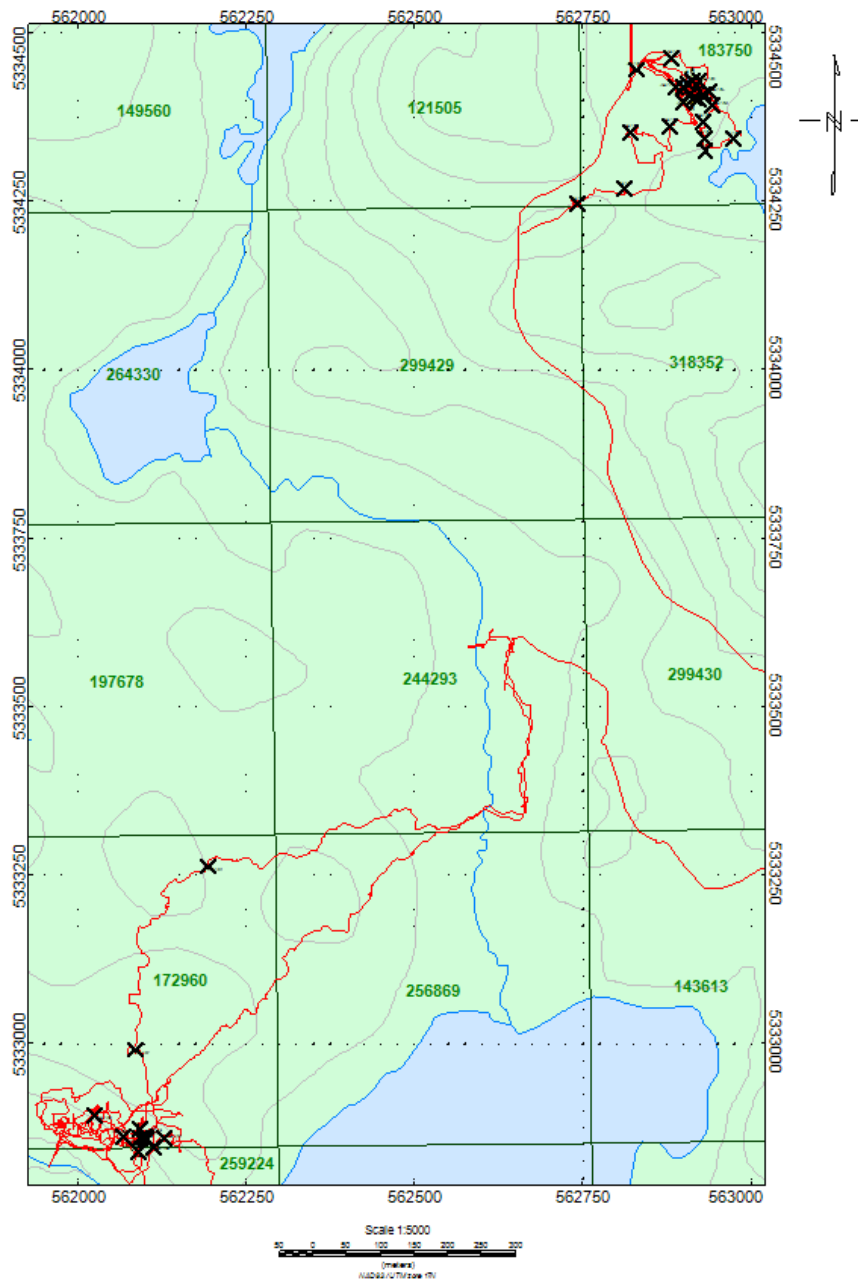


Figure 2: Prospecting Traverses

3.0 SAMPLE RESULTS

ALL SAMPLES WERE TAKEN FOR REFERENCE PURPOSES ONLY! ALL SAMPLES WERE PRESENTED TO GOLDEN VALLEY MINES LTD.

3.1 SUMMARY OF SAMPLES COLLECTED

Date	Sample Number	UTM Easting	UTM Northing	
September 16, 2019	347707	562829	5334446	
	347708	562881	5334463	
	347709	562912	5334429	
	347710	562908	5334408	
	347711	562898	5334420	
	347712	562887	5334420	
	347713	562899	5334398	
	347714	562878	5334362	
	347715	562820	5334353	
	347716	562811	5334269	
	347717	562742	5334247	
		347758	562905	5334425
		347759	562941	5334393
		347760	562972	5334344
		347761	562922	5334430
		347762	562920	5334401
	347763	562915	5334405	
	347764	562927	5334410	
	347765	562936	5334413	
	347766	562927	5334369	
	347767	562929	5334344	
	347768	562931	5334326	
September 17, 2019	347718	562092	5332861	
	347719	562101	5332858	
	347720	562101	5332860	
	347721	562099	5332862	
	347722	562084	5332992	
	347723	562193	5333264	

Claudia	347769	562067	5332862
	347770	562024	5332894
	347771	562091	5332874
	347772	562090	5332840
	347773	562127	5332860
	347774	562111	5332848

Table 3: Summary of Samples Collected

3.2 DAY 1 SAMPLE DETAILS & IMAGES — SEPTEMBER 16, 2019

SAMPLES WERE COLLECTED FROM OUTCROP ENCOUNTERED. THESE WERE COLLECTED FOR REFERENCE PURPOSES AND PRESENTED TO THE CLIENT.

The target for the first day of prospecting was to locate a historic shaft, known as the Scott-Kirkland Gold Mine #2 shaft, in the north-eastern part of the survey area.

A shaft was located at coordinates 562910E and 5334414N.



Figure 3: Historic Scott-Kirkland Gold Mine #2 Shaft

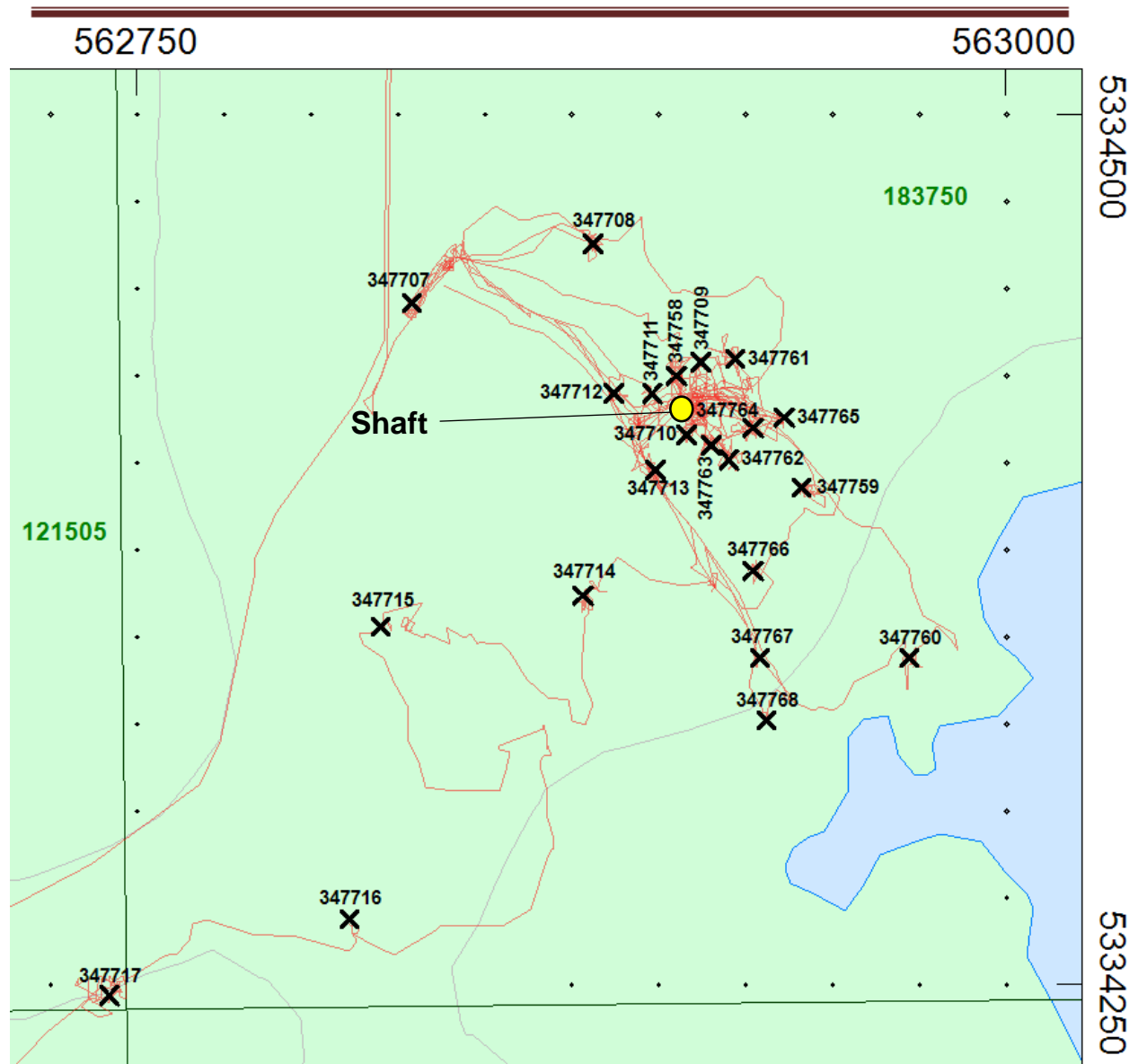


Figure 4: Day 1 Samples and Traverse Tracks with the Shaft Located

Sample R347758

Location:
UTM Zone 17T
562904E
5334425N

Rock Description:

- Porphyritic mafic metavolcanic rock
- Chlorite alteration in fractures of rock (Green colour)
- Magnetic
- Contains pyrite mineralization



Figure 5: Picture of Sample R347758



Figure 6: Picture of Sample R347758

Sample R347759

Location:
UTM Zone 17T
562948E
5334386N

Rock Description:

- Porphyritic mafic metavolcanic rock
- Quartz infilling of fractures
- Contains disseminated pyrite mineralization



Figure 7: Picture of Sample R347759



Figure 8: Picture of Sample R347759

Sample R347760

Location:
UTM Zone 17T
562973E
5334343N

Rock Description:

- Porphyritic mafic metavolcanic rock
- Magnetic
- Contains disseminated pyrite mineralization



Figure 9: Picture of Sample R347760



Figure 10: Picture of Sample R347760

Sample R347761

Location:
UTM Zone 17T
562920E
5334431N

Rock Description:

- Porphyritic mafic metavolcanic rock
- Magnetic



Figure 11: Picture of Sample R347761



Figure 12: Picture of Sample R347761

Sample R347762

Location:
UTM Zone 17T
562921E
5334402N

Rock Description:

- Highly altered porphyritic intermediate metavolcanic rock
- Contains calcite alteration and some pyrite mineralization



Figure 13: Picture of Sample R347762



Figure 14: Picture of Sample R347762

Sample R347763

Location:
UTM Zone 17T
562916E
5334404N

Rock Description:

- Porphyritic mafic metavolcanic rock
- Contains calcite alteration



Figure 15: Picture of Sample R347763



Figure 16: Picture of Sample R347763

Sample R347764

Location:
UTM Zone 17T
562927E
5334408N

Rock Description:

- Porphyritic felsic to intermediate metavolcanic rock
- Contains large amount of potassium feldspar (red colour)
- Contains quartz phenocrysts
- Quartz and calcite infilling of fractures



Figure 17: Picture of Sample R347764



Figure 18: Picture of Sample R347764

Sample R347765

Location:
UTM Zone 17T
562935E
5334414N

Rock Description:

- Porphyritic felsic to intermediate metavolcanic rock
- Contains large amount of potassium feldspar (red colour)
- Contains quartz phenocrysts
- Quartz and calcite infilling of fractures



Figure 19: Picture of Sample R347765



Figure 20: Picture of Sample R347765

Sample R347766

Location:
UTM Zone 17T
562926E
5334369N

Rock Description:

- Fine grain mafic metavolcanic rock
- Quartz infilling of fractures
- Magnetic
- Contains pyrite mineralization



Figure 21: Picture of Sample R347766



Figure 22: Picture of Sample R347766

Sample R347767

Location:
UTM Zone 17T
562980E
5334310N

Rock Description:

- Fine grain mafic metavolcanic rock
- Quartz infilling of fractures
- Contains pyrite mineralization



Figure 23: Picture of Sample R347767



Figure 24: Picture of Sample R347767

Sample R347768

Location:
UTM Zone 17T
562931E
5334326N

Rock Description:

- Fine grain mafic metavolcanic rock
- Quartz infilling of fractures
- Magnetic



Figure 25: Picture of Sample R347768



Figure 26: Picture of Sample R347768

Sample R37707

Location:
UTM Zone 17T
562828E
5334448N

Rock Description:

- Fine grain mafic metavolcanic rock
- Contains pyrite stringer mineralization



Figure 27: Picture of Sample R347707



Figure 28: Picture of Sample R347707

Sample R347708

Location:
UTM Zone 17T
562880E
5334464N

Rock Description:

- Moderately altered fine grains mafic metavolcanic rock
- Contains quartz veining
- Contains pyrite stringer mineralization



Figure 29: Picture of Sample R347708



Figure 30: Picture of Sample R347708

Sample R347709

Location:
UTM Zone 17T
562911E
5334429N

Rock Description:

- Porphyritic felsic to intermediate metavolcanic rock
- Contains large amount of potassium feldspar (red colour)
- Quartz and calcite infilling of fractures



Figure 31: Picture of Sample R347709



Figure 32: Picture of Sample R347709

Sample R347710

Location:
UTM Zone 17T
562906E
5334410N

Rock Description:

- Highly altered porphyritic felsic to intermediate metavolcanic rock
- Contains large amount of potassium feldspar (red colour)
- Contains quartz phenocrysts
- Quartz and calcite infilling of fractures



Figure 33: Picture of Sample R347710



Figure 34: Picture of Sample R347710

Sample R347711

Location:
UTM Zone 17T
562901E
5334417N

Rock Description:

- Highly altered porphyritic felsic to intermediate metavolcanic rock
- Contains large amount of potassium feldspar (red colour)
- Contains quartz phenocrysts
- Quartz and calcite infilling of fractures



Figure 35: Picture of Sample R347711



Figure 36: Picture of Sample R347711

Sample R347712

Location:
UTM Zone 17T
562887E
5334418N

Rock Description:

- Fine grain mafic metavolcanic rock
- Quartz infilling of fractures
- Magnetic
- Contains pyrite vein and disseminated mineralization



Figure 37: Picture of Sample R347712



Figure 38: Picture of Sample R347712

Sample R347713

Location:
UTM Zone 17T
562898E
5334397N

Rock Description:

- Highly altered porphyritic felsic to intermediate metavolcanic rock
- Contains large amount of potassium feldspar (red colour)
- Contains quartz phenocrysts
- Quartz and calcite infilling of fractures



Figure 39: Picture of Sample R347713



Figure 40: Picture of Sample R347713

Sample R347714

Location:
UTM Zone 17T
562879E
5334361N

Rock Description:

- Fine grain mafic metavolcanic rock
- Quartz, calcite and chlorite infilling of fractures
- Magnetic



Figure 41: Picture of Sample R347714



Figure 42: Picture of Sample R347714

Sample R347715

Location:
UTM Zone 17T
562821E
5334352N

Rock Description:

- Fine grain mafic metavolcanic rock
- Quartz infilling of fractures
- Magnetic
- Contains pyrite vein and disseminated mineralization



Figure 43: Picture of Sample R347715



Figure 44: Picture of Sample R347715

Sample R347716

Location:
UTM Zone 17T
562813E
5334265N

Rock Description:

- Porphyritic mafic metavolcanic rock
- Contains quartz phenocrysts



Figure 45: Picture of Sample R347716



Figure 46: Picture of Sample R347716

Sample R347717

Location:
UTM Zone 17T
562746E
5334253N

Rock Description:

- Fine grain mafic metavolcanic rock
- Quartz veins with disseminated pyrite

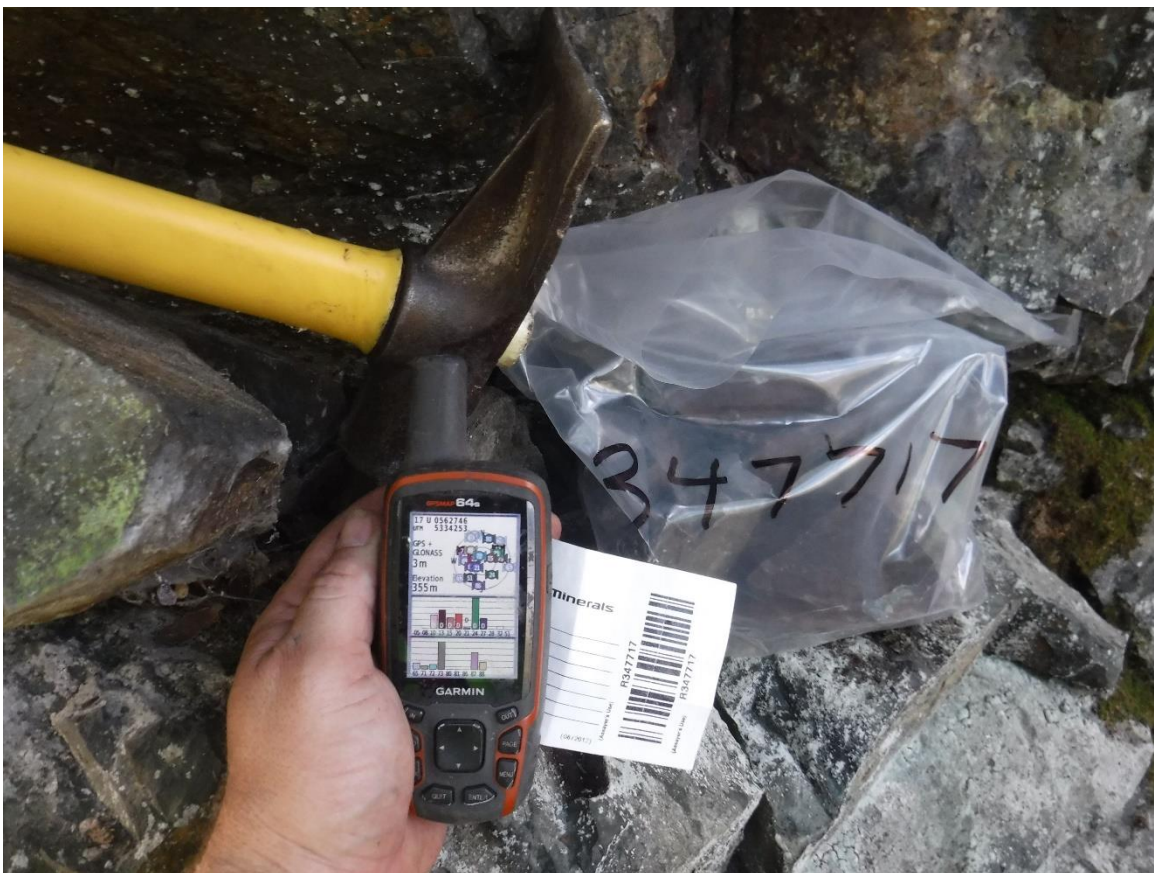


Figure 47: Picture of Sample R347717



Figure 48: Picture of Sample R347717

3.2 DAY 2 SAMPLE DETAILS & IMAGES — SEPTEMBER 17, 2019

SAMPLES WERE COLLECTED FROM OUTCROP ENCOUNTERED. THESE WERE COLLECTED FOR REFERENCE PURPOSES AND PRESENTED TO THE CLIENT.

The target for the second day of prospecting was to locate a historic shaft, known as the Scott-Kirkland Gold Mine Shaft #1, in the south-western part of the survey area.

A shaft was located at coordinates 562100E and 5332866N.

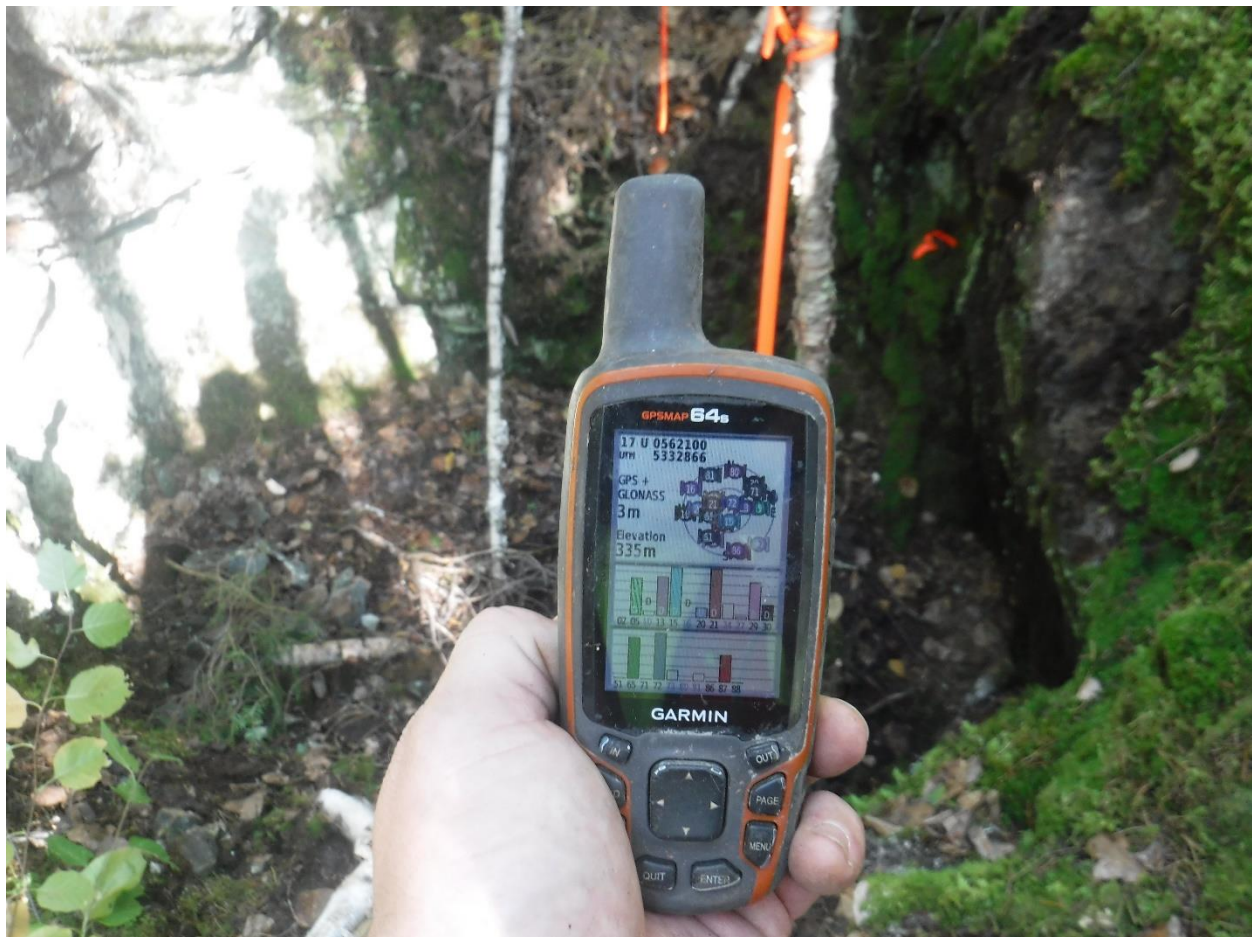


Figure 49: Historic Scott-Kirkland Gold Mine #1 Shaft

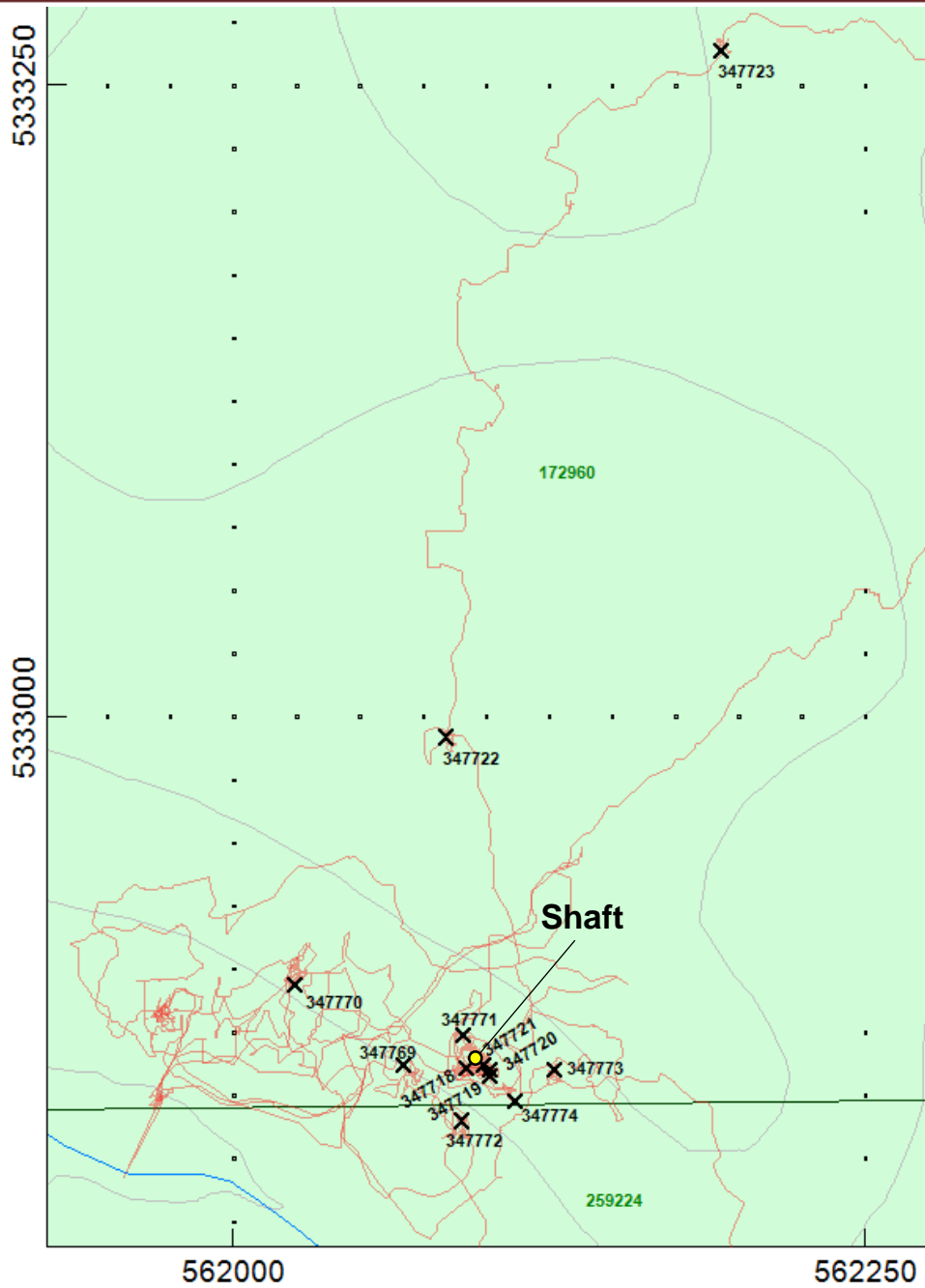


Figure 50: Day 2 Samples and Traverse Tracks with the Shaft Located

Sample R347718

Location:
UTM Zone 17T
562092E
5332861N

Rock Description:

- Altered mafic flow



Figure 51: Picture of Sample R347718



Figure 52: Picture of Sample R347718

Sample R347719

Location:
UTM Zone 17T
562101E
5332858N

Rock Description:

- Altered mafic flow with sulphides



Figure 53: Picture of Sample R347719



Figure 54: Picture of Sample R347719

Sample R347720

Location:
UTM Zone 17T
562101E
5332860N

Rock Description:

- Fine grain mafic metavolcanic rock
- Fine disseminated pyrite



Figure 55: Picture of Sample R347720



Figure 56: Picture of Sample R347720

Sample R347721

Location:
UTM Zone 17T
562099E
5332862N

Rock Description:

- Fine grain mafic metavolcanic rock



Figure 57: Picture of Sample R347721



Figure 58: Picture of Sample R347721

Sample R347722

Location:
UTM Zone 17T
562084E
5332992N

Rock Description:

- Coarse grain mafic metavolcanic rock



Figure 59: Picture of Sample R347722



Figure 60: Picture of Sample R347722

Sample R347723

Location:
UTM Zone 17T
562193E
5333264N

Rock Description:
• Gabbro



Figure 61: Picture of Sample R347723

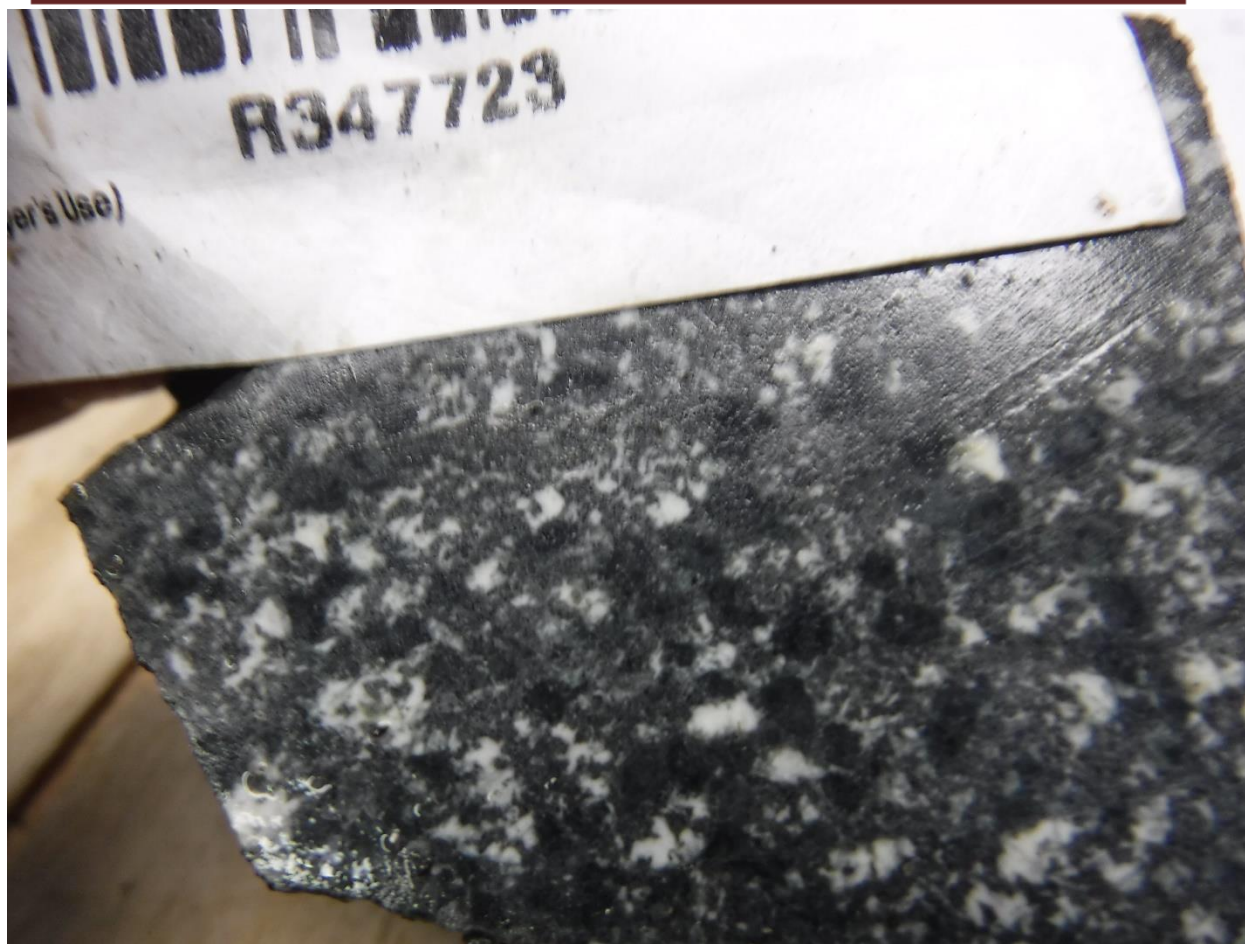


Figure 62: Picture of Sample R347723

Sample R347769

Location:
UTM Zone 17T
562067E
5332862N

Rock Description:
• Gabbro



Figure 63: Picture of Sample R347769



Figure 64: Picture of Sample R347769

Sample R347770

Location:
UTM Zone 17T
562024E
5332894N

Rock Description:

- Coarse grain mafic metavolcanic rock



Figure 65: Picture of Sample R347770



Figure 66: Picture of Sample R347770

Sample R347771

Location:
UTM Zone 17T
562091E
5332874N

Rock Description:

- Altered mafic metavolcanic rock



Figure 67: Picture of Sample R347771



Figure 68: Picture of Sample R347771

Sample R347772

Location:
UTM Zone 17T
562090E
5332840N

Rock Description:

- Coarse grained mafic metavolcanic rock



Figure 69: Picture of Sample R347772



Figure 70: Picture of Sample R347772

Sample R347773

Location:
UTM Zone 17T
562127E
5332860N

Rock Description:

- Fine grain mafic metavolcanic rock
- Fine disseminated pyrite



Figure 71: Picture of Sample R347773



Figure 72: Picture of Sample R347773

Sample R347774

Location:
UTM Zone 17T
562111E
5332848N

Rock Description:

- Mafic volcanic breccia rock



Figure 73: Picture of Sample R347774



Figure 74: Picture of Sample R347774

APPENDIX A

STATEMENT OF QUALIFICATIONS

I, C. Jason Ploeger, hereby declare that:

1. I am a professional geophysicist with residence in Larder Lake, Ontario and am presently employed as a Geophysicist and Geophysical Manager of Canadian Exploration Services Ltd. of Larder Lake, Ontario.
2. I am a Practising Member of the Association of Professional Geoscientists, with membership number 2172.
3. I graduated with a Bachelor of Science degree in geophysics from the University of Western Ontario, in London Ontario, in 1999.
4. I have practiced my profession continuously since graduation in Africa, Bulgaria, Canada, Mexico and Mongolia.
5. I am a member of the Ontario Prospectors Association, a Director of the Northern Prospectors Association and a member of the Society of Exploration Geophysicists.
6. I do not have nor expect an interest in the properties and securities of **Golden Valley Mines Ltd.**
7. I am responsible for the final processing and validation of the survey results and the compilation of the presentation of this report. The statements made in this report represent my professional opinion based on my consideration of the information available to me at the time of writing this report.

C. Jason Ploeger, P.Geo., B.Sc.
Geophysical Manager
Canadian Exploration Services Ltd.

Larder Lake, ON
September 18, 2019

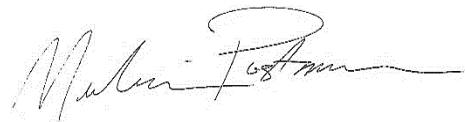


APPENDIX A

STATEMENT OF QUALIFICATIONS

I, Melanie Postman, hereby declare that:

1. I am a Geoscientist-in-Training with residence in Larder Lake, Ontario and am presently employed as a Junior Geophysicist with Canadian Exploration Services Ltd. of Larder Lake, Ontario.
2. I graduated with a Bachelor of Science Honors specialization degree in geophysics for professional registration from the University of Western Ontario, in London Ontario, in 2017.
3. I am a member of the Association of Professional Geoscientists as a Geoscientist-in-Training (Member ID 10710).
4. I have previous geophysical work experience during and following my education.
5. I do not have nor expect an interest in the properties and securities of **Golden Valley Mines Ltd.**
6. I am responsible for assisting with the final processing and validation of the survey results and the compilation of the presentation of this report. The statements made in this report represent my opinion based on my consideration of the information available to me at the time of writing this report.



Melanie Postman, G.I.T., B.Sc.
Junior Geophysicist

Larder Lake, ON
September 18, 2019

APPENDIX A

STATEMENT OF QUALIFICATIONS

I, Andrew Salerno, hereby declare that:

1. I am a soon-to-be Geoscientist-in-Training with residence in Virginiatown, Ontario and am presently employed as a Junior Geologist with Canadian Exploration Services Ltd. of Larder Lake, Ontario.
2. I graduated with a Bachelor of Science Honors specialization in geology from the University of Waterloo, in Waterloo, Ontario, in 2018.
3. I am currently undergoing the application process to register as a Geoscientist-in-Training to later become a practicing member of the Association of Professional Geoscientists.
4. I do not have nor expect an interest in the properties and securities of **Golden Valley Mines Ltd.**
5. I am responsible for assisting with the final processing and validation of the survey results and the compilation of the presentation of this report. The statements made in this report represent my professional opinion based on my consideration of the information available to me at the time of writing this report.



Andrew Salerno, B.Sc.
Junior Geologist
(non-Professional)

Larder Lake, ON
September 18, 2019

APPENDIX B

GARMIN GPS MAP 62S



Physical & Performance:	
Unit dimensions, WxHxD:	2.4" x 6.3" x 1.4" (6.1 x 16.0 x 3.6 cm)
Display size, WxH:	1.43" x 2.15" (3.6 x 5.5 cm); 2.6" diag (6.6 cm)
Display resolution, WxH:	160 x 240 pixels
Display type:	transflective, 65-K color TFT
Weight:	9.2 oz (260.1 g) with batteries
Battery:	2 AA batteries (not included); NiMH or Lithium recommended
Battery life:	20 hours
Waterproof:	yes (IPX7)
Floats:	no
High-sensitivity receiver:	yes
Interface:	high-speed USB and NMEA 0183 compatible

Maps & Memory:	
Basemap:	yes
Preloaded maps:	no
Ability to add maps:	yes
Built-in memory:	1.7 GB
Accepts data cards:	microSD™ card (not included)
Waypoints/favorites/locations:	2000
Routes:	200
Track log:	10,000 points, 200 saved tracks
Features & Benefits:	
Automatic routing (turn by turn routing on roads):	yes (with optional mapping for detailed roads)
Electronic compass:	yes (tilt-compensated, 3-axis)
Touchscreen:	no
Barometric altimeter:	yes
Camera:	no
<u>Geocaching-friendly:</u>	yes (paperless)
<u>Custom maps compatible:</u>	yes
Photo navigation (navigate to geotagged photos):	yes
Outdoor GPS games:	no
Hunt/fish calendar:	yes
Sun and moon information:	yes

Tide tables:	yes
Area calculation:	yes
Custom POIs (ability to add additional points of interest):	yes
Unit-to-unit transfer (shares data wirelessly with similar units):	yes
Picture viewer:	yes
Garmin Connect™ compatible (online community where you analyze, categorize and share data):	yes

- *Specifications obtained from www.garmin.com*



APPENDIX C

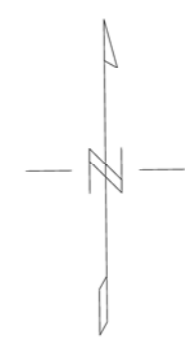
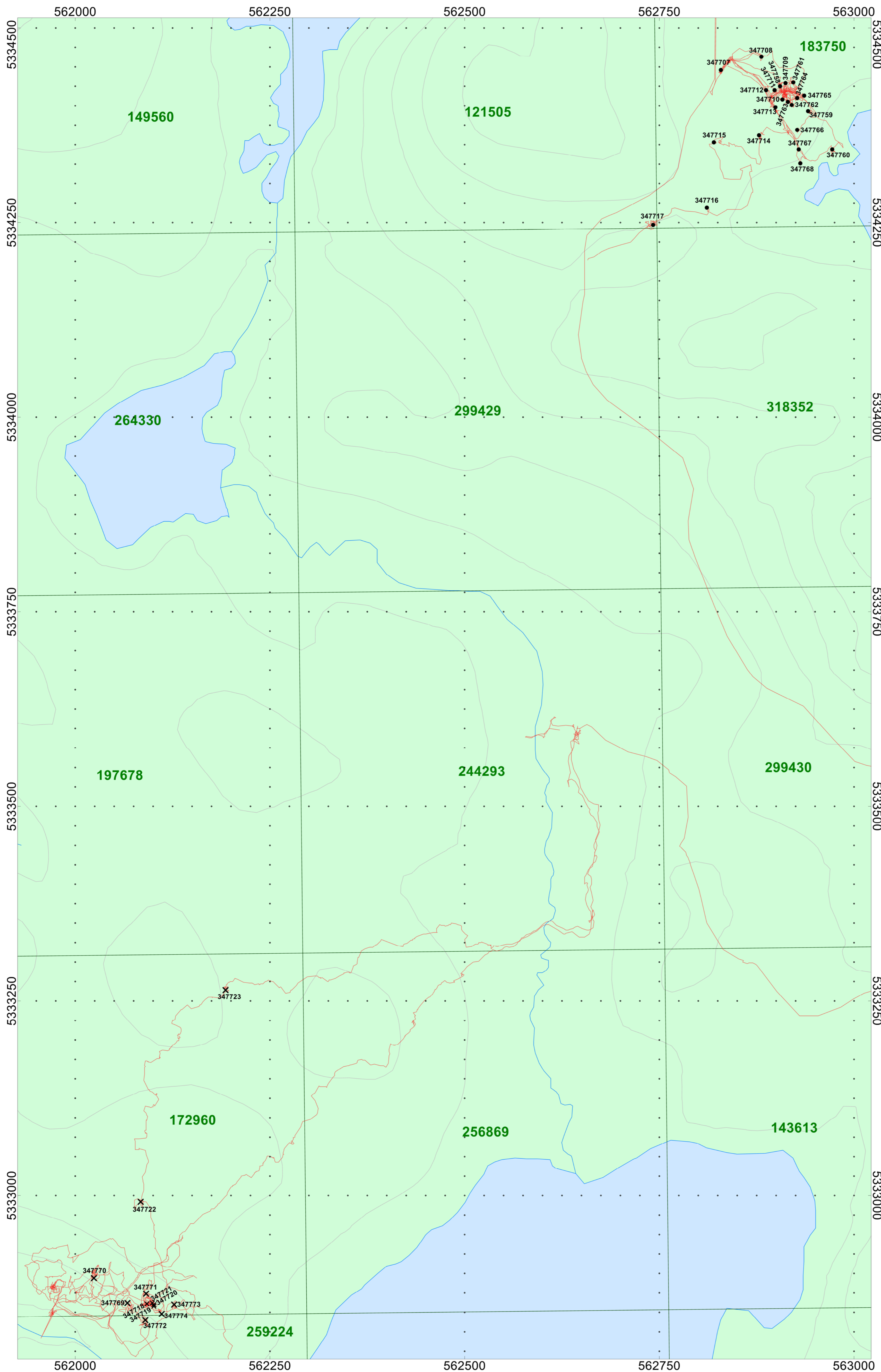
LIST OF MAPS

- 1) Q2690-GoldenValley-CookLake-Prospecting (1:2500)

Total Maps = 1

877.504.2345 | info@cxsltd.com | www.cxsltd.com





LEGEND

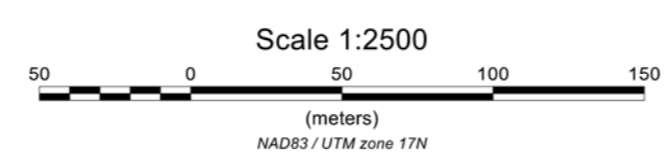
- September 16, 2019
- × September 17, 2019
- Traverse Path



Golden Valley Mines Ltd.
Mines de la Vallée de l'Or ltée

Cook Lake Prospect
Grenfell Township, Ontario

PROSPECTING TRAVERSE PLAN MAP
September 16-17, 2019



Map Drawn By: Melanie Postman, GIT
September 2019

