

We are committed to providing [accessible customer service](#).

If you need accessible formats or communications supports, please [contact us](#).

Nous tenons à améliorer [l'accessibilité des services à la clientèle](#).

Si vous avez besoin de formats accessibles ou d'aide à la communication, veuillez [nous contacter](#).

**Prospecting on
Multicell 524992 in
Telfer Township, Sudbury, Ontario
And Cell 178764 in
Aylmer Township, Sudbury, Ontario
Sheppard Claims
November 4, 2018**

F. Delabbio, P.Eng.

TABLE OF CONTENTS

Location and Access	1
Location Map	2
Claim Map (Legacy)	3
Claim Map (Single Cell)	4
Work Log	5
Preamble	6
Prospecting Map §	7

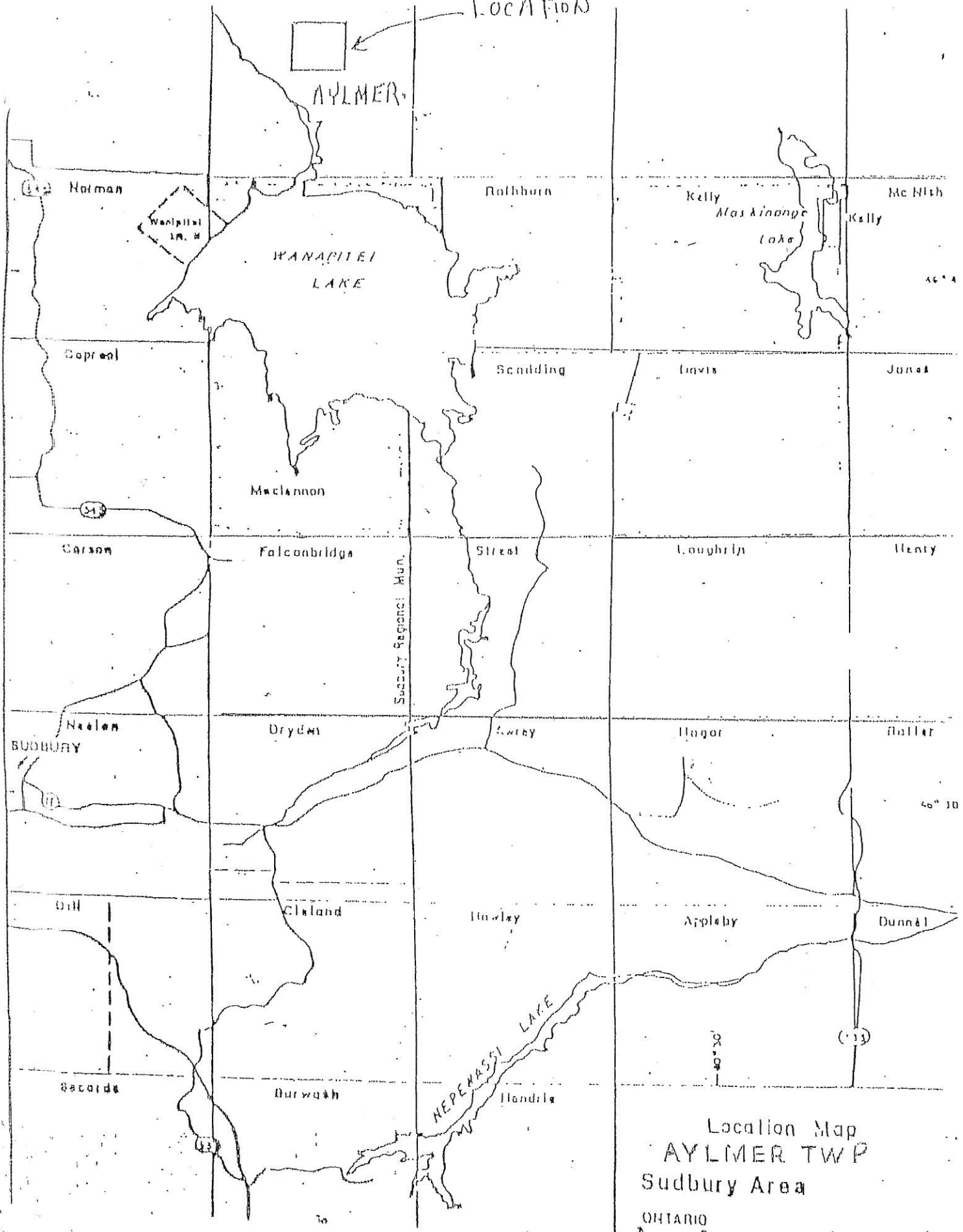
LOCATION AND ACCESS

Aylmer Township is located north of Lake Wanapitei, Sudbury Mining Division. Access to the mining claims in Aylmer Township is via Highway 545 North of Capreol and onto the Portelance Road. You travel north for 18 km after the turnoff for the Wanapitei First Nation. You then leave the Portelance Road and turn south over the bridge of the Wanapitei River onto the Poupore Road. You travel south on the Poupore Road for 11 km to 13 km to the gravel pit on the edge of the east branch of the Wanapitei River. You turn south towards lake Wanapitei on the North River Park Road for 2 km to the middle of the claim.

LOCATION

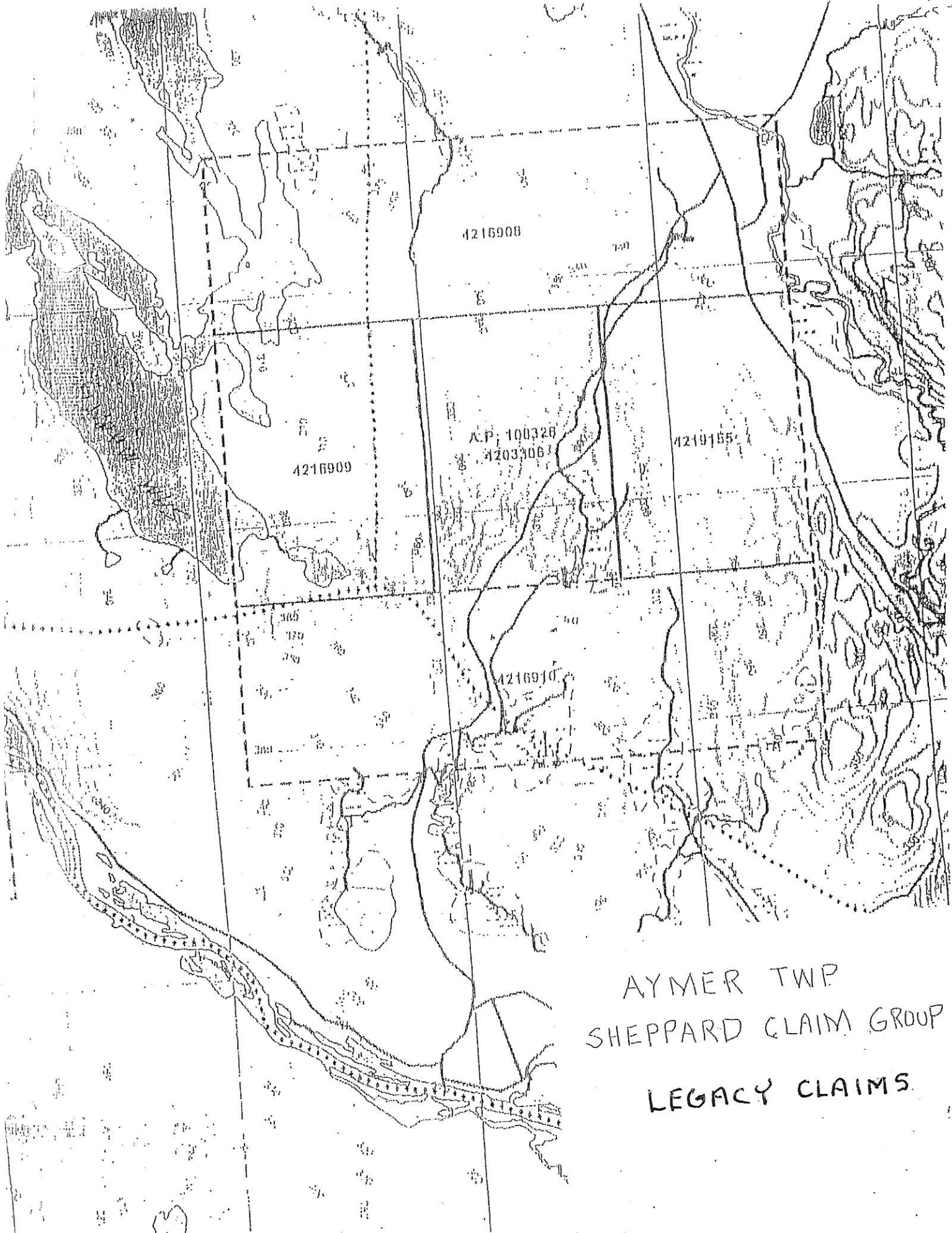


AYLMER



Location Map
AYLMER TWP
Sudbury Area

ONTARIO



4216908

4216909

A.P. 100320
42033061

4219155

4216910

AYMER TWP
SHEPPARD CLAIM GROUP
LEGACY CLAIMS

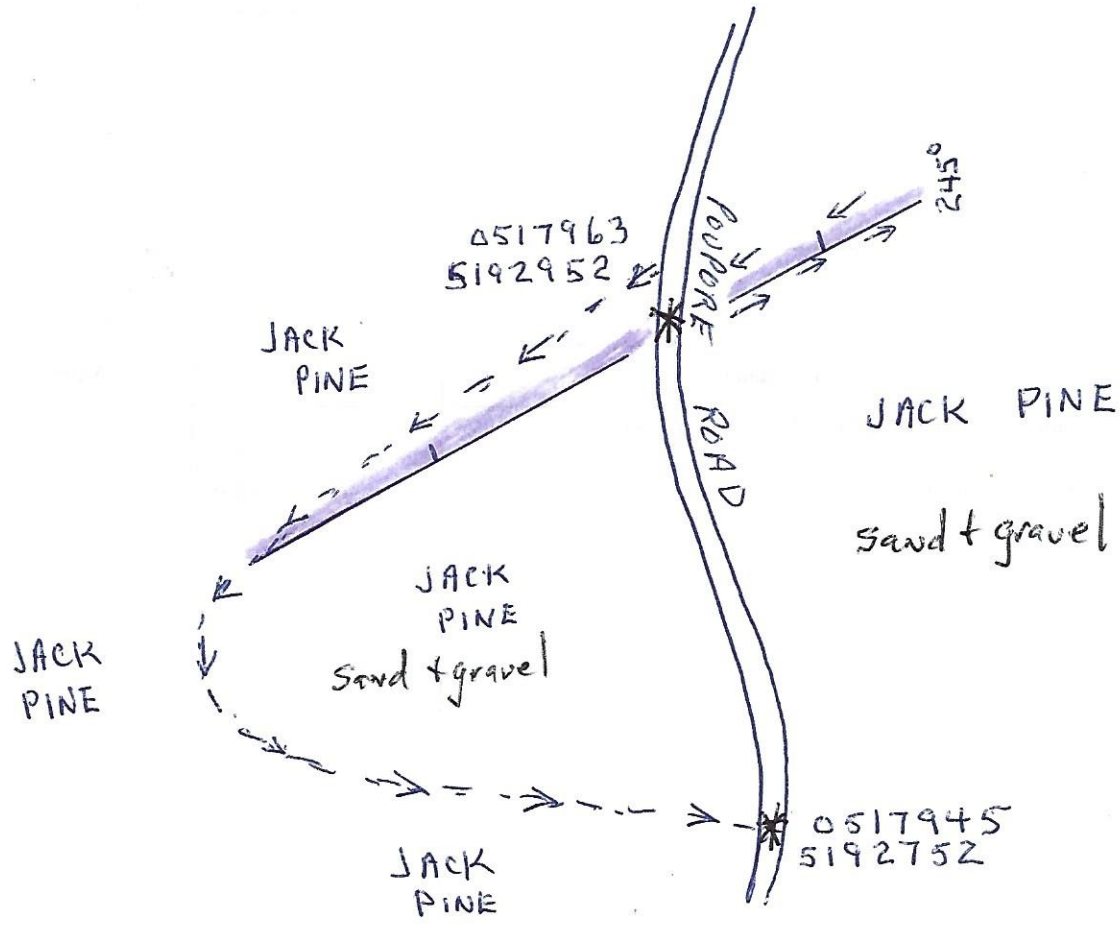
Job: Aylmer Twp.

Date: November 4, 2018

Jim and I visited the claims in Aylmer to do mapping and prospecting. We travelled to the N.E. area of the newest claims and checked out road access and mapped some geology. Most of this area is sand and gravel and is mostly jack pine. We followed the dark sediment (mudstone) which appears to be faulted 245 degrees SW and disappears into overburden. We also mapped in Gabbro on the north side of an access in the S.W. corner of the claim block.

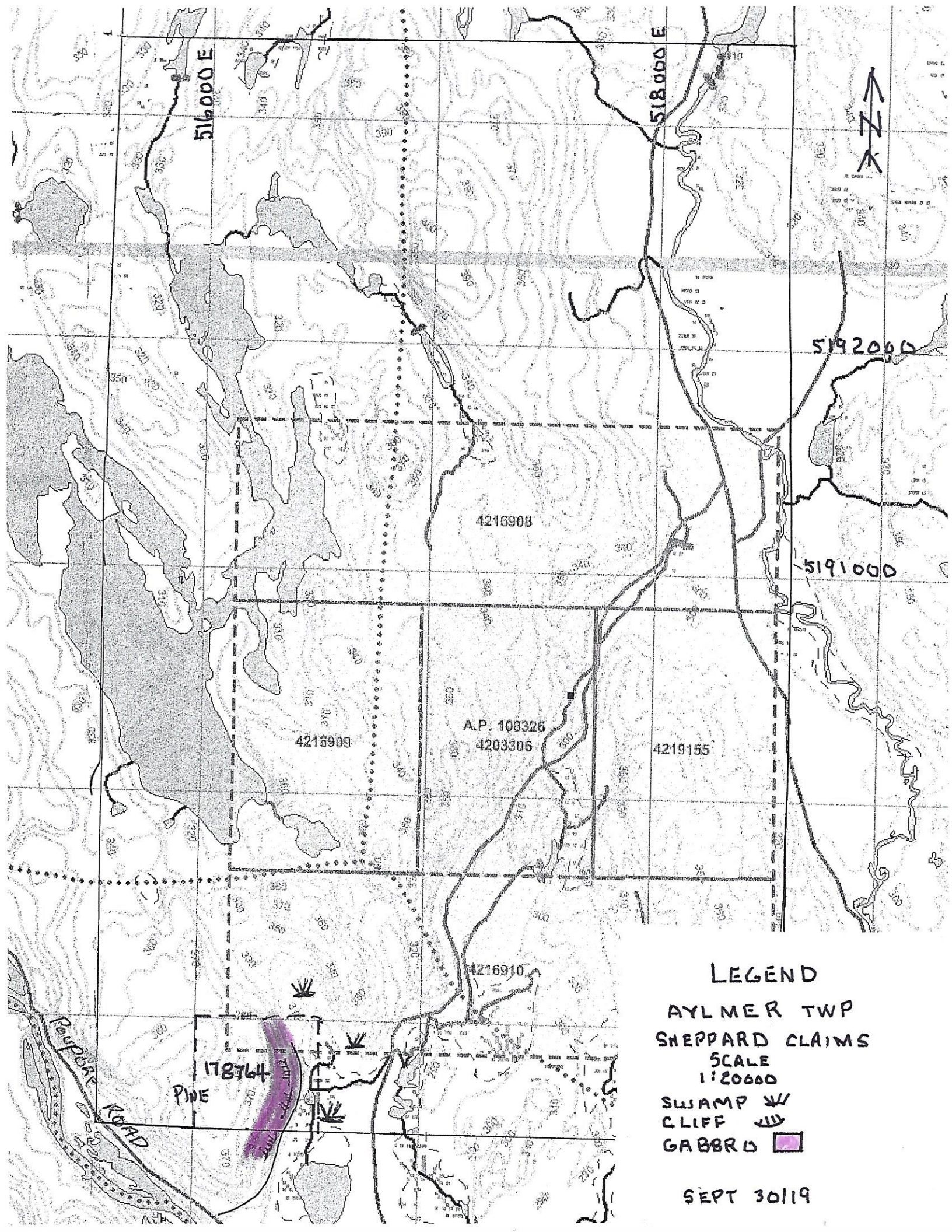
Party Chief: Fred Delabbio

Weather: Sunny, +1 degree



NE CORNER
CLAIM 524992
TELFER TWP

- ┆ VERTICAL SHEER
- HORIZONTAL DARK SEDIMENT
- - - TRAIL
- ← TRAVERSE N.T.S
- * G.P.S reading



LEGEND

AYLMER TWP
SHEPPARD CLAIMS

SCALE
1:20000

SWAMP 

CLIFF 

GABBRU 

SEPT 30 119