

We are committed to providing [accessible customer service](#).

If you need accessible formats or communications supports, please [contact us](#).

Nous tenons à améliorer [l'accessibilité des services à la clientèle](#).

Si vous avez besoin de formats accessibles ou d'aide à la communication, veuillez [nous contacter](#).

**Assessment Report on  
Channel Sampling, McKinnon Deposit,  
Hawkins Gold Property  
Hawkins Township, Sault Ste. Marie Mining Division,  
Ontario**

Claim 156307  
UTM WGS84 Zone 16U 715175 mE 5430115 mN;  
Lat 48° 59' 11" N Long 84° 03' 32" W  
NTS 42C16 - Kabinakagami Lake

For:  
Pavey Ark Minerals Inc.  
Client number 411465

Prepared By:  
Richard Sutcliffe, P.Geol. (Client number 225603)  
130 Foxridge Drive,  
Ancaster, ON, L9G 5B9

October 26, 2019

## Executive Summary

This assessment report documents channel sampling on the McKinnon Gold Deposit that is part of the Hawkins Property. The work was conducted on claim 156307 located in Hawkins Township, Sault Ste. Marie Mining Division, Ontario. The claims are part of a larger contiguous property in Derry, Hawkins, Walls, Minnipuka, Legge and Puskuta Townships that is owned by Pavey Ark Minerals Inc.

The Property is located 80 km south-southwest of Hearst, Ontario and is directly accessed by route 583 and the Caithness logging road system that extends south from the Trans-Canada Highway 11 at Hearst. The field work for this report took place between September 5 to 8 inclusive, 2019. The total assessment expenditure is \$11,796. The work was completed under Exploration Plan PL-19-000016.

The McKinnon Property contains gold mineralization associated with the Puskuta deformation zone, a steeply dipping dextral, transcurrent structure that on a regional scale bounds the south side of the Kabinakagami Lake greenstone belt and extends for approximately 60 km to the southeast through Hawkins, Walls, Minnipuka and Puskuta Townships. The McKinnon Property has been sporadically explored for gold beginning with the discovery of the Taylor Prospect in 1923 in Hawkins Township close to the ACR tracks. The Shenango Gold Mine operated in Hawkins Township from 1935 to 1941 and is located on the McKinnon Property. Exploration work on the Property by Falconbridge in 1983 to 1986 included 79 drill holes for a total of 14,200 m and extensive surface trenching. This drilling and trenching defined an auriferous shear zone with values of 0.5 to 4.0 g/t Au over 4 to 30 m widths along a 3.7 km trend.

In the current sampling program, Pavey Ark obtained 29 channel samples each of 1.0 m length from an area of stripped outcrop exposing the McKinnon Gold Deposit. Most of the samples were from a 23.0 m long channel that provides continuous exposure from the hangingwall amphibolite in the north through to the tonalite footwall of the McKinnon Deposit. Additional samples tested for quartz vein hosted mineralization in the hangingwall of the McKinnon Deposit. Additionally, 1 certified reference standard was submitted for QA/QC purposes. The samples were analyzed for Au by fire assay with an atomic absorption finish (FA/AA) at Activation Laboratories Ltd. (Actlabs), in Thunder Bay, Ontario.

Channel sample assay values ranged from Nil to 1.03 g/t Au with 6 samples reporting over 0.5 g/t Au. The channel sampling program was successful in confirming significant surface gold values on the McKinnon Gold Property.

## **Table of Contents**

Executive Summary

Table of Contents

- 1.0 Introduction
- 2.0 Location and Access
- 3.0 Claim Holding and Property Disposition
- 4.0 Previous Work
- 5.0 Geology
- 6.0 Channel Sampling Program
- 7.0 Conclusions and Recommendations
- 8.0 References
- 9.0 Statement of Qualifications

### List of Figures

- Figure 1 Location of McKinnon Deposit, Hawkins Property
- Figure 2 A-Star Prospecting cutting channel samples, Hawkins Property, Sept 7, 2019
- Figure 3 Location of Channel Samples

### List of Tables

- Table 1 Summary of Previous Exploration on the Hawkins Property
- Table 2 Results for OREAS 18c Reference Material

### List of Appendices

- Appendix 1 Table of Hawkins Property Claims
- Appendix 2 Channel sample locations and descriptions
- Appendix 3 Actlabs Assay Certificate
- Appendix 4 Expenditures

### Maps

- Map 1. Hawkins Township Claim Map G-2316 Scale 1:20,000
- Map 2. Channel Sample Locations and Geology, McKinnon Deposit Scale 1:1,000

## **1.0 Introduction**

This assessment report documents results of gold assays from 29 channel samples from the McKinnon Gold Deposit on the Hawkins Property. The work was conducted on claim 156307 located in Hawkins Township in the Sault Ste. Marie Mining Division, Ontario. The claim is part of a larger contiguous property in Derry, Hawkins, Walls, Minnipuka, Legge, and Puskuta Townships that is owned by Pavey Ark Minerals Inc.

The field work for this report took place between September 5 to 8 inclusive, 2019. The work was done to confirm the location of, and validate, surface gold mineralization at the McKinnon Deposit. Additional channel samples were obtained from quartz veins in amphibolite in the hanging wall of the deposit. Pavey Ark submitted a total of 30 samples for assay including 29 channel samples and 1 certified reference standard for QA/QC purposes. The Pavey Ark samples were analyzed for Au by fire assay with an atomic absorption finish (FA/AA) at Activation Laboratories Ltd. (Actlabs) in Thunder Bay, Ontario. The total assessment expenditure is \$11,796. The work was completed under Exploration Plan PL-19-000016.

## **2.0 Location and Access**

The Hawkins Property and McKinnon gold deposit are located 80 km south-southwest of Hearst, Ontario (Figure 1). The Project is directly accessed by route 583 and the Caithness logging road system that extends south from the Trans-Canada Highway 11 at Hearst. The logging road system is maintained all year.

At approximately 10.5 km south of Hearst on route 583, the Project is accessed by turning left onto the Caithness Road. At approximately 70 km south on the Caithness Road, a right turn on the Oba Road provides access to the McKinnon Deposit by continuing west on Oba Road for 26.1 km to the intersection with Irving Road and turning left (south) on Irving Road and then continuing on the Irving road for 3.2 km past CNR tracks, toward the junction with Poulin road. The McKinnon Property is accessed by a trail that extends south from the Irving Road 400 m east of the Poulin Road junction. Total road distance from highway 11 at Hearst to the McKinnon Property on 583/Caithness/Oba/Irving route is approximately 110 km.

**Figure 1. Location of McKinnon Deposit, Hawkins Property**



Source: Google Earth 2019

### **3.0 Claim Holdings and Property Disposition**

As of October 26, 2019, the Hawkins Property is comprised of 565 contiguous staked claims covering approximately (13,275 ha) that spans Derry, Hawkins, Walls, Minnipuka, Legge, and Puskuta Townships (Appendix 1). The claims are registered in the name of Pavey Ark Minerals Inc., a private Ontario company. A claim map is provided as Map 1. The work was performed on claim 156307 on the McKinnon Gold Deposit in central Hawkins Township.

### **4.0 Previous Work**

The Hawkins Property in the area of Hawkins Township has been sporadically explored for gold beginning with the discovery of the Taylor Prospect in 1923 in Hawkins Township close to the ACR tracks. The Shenango Gold Mine operated in Hawkins Township from 1935 to 1941 and is located on the McKinnon Property. Boissoneault (2004) reports that the Shenango Mine produced 66.2 ounces of gold from 2,430 tons of mineralization between 1937 and 1941. Claims covering the McKinnon Deposit were initially staked by Mr. Donald McKinnon in 1997, based on having similar geological characteristics to the Hemlo gold deposits located 140 km to the southwest.

A summary of exploration in Hawkins Township based on the report by Boissoneault (2004) is provided in Table 2. This table is divided into 3 geographic areas. These include: the eastern part of Hawkins township in the vicinity of the Taylor Prospect (on legacy claim 4267268); the central part of the township in the vicinity of the past-producing Shenango Mine (on legacy claim 1229071); and the western part of the township in the vicinity of the Goldfield's showing (on legacy claim 4266187).

<b>Table 2. Summary of Exploration in Hawkins Township</b>			
<b>Date</b>	<b>Performed By:</b>	<b>Work Performed:</b>	<b>Results:</b>
<b><i>Taylor Prospect (legacy claim 4267268)</i></b>			
1925-1929	G. Taylor	Stripping, trenching, sampling	Uncovered 3 quartz veins, gold panned
1929-1935	Hawkins Mining Syndicate	Stripping, trenching, bulk sampling (2000 lb)	Uncovered 7 quartz veins 30.5 g/t Au over 0.30 m; 5.1 g/t Au from test pit
1935	Hollinger Gold Mines	Prospecting, diamond Drilling	31.31 g/t Au over 6.1 m, no other documentation
1935-1945	Mintor Gold Mines	Prospecting, channel Sampling	No documentation
1960	International Nickel Co.	Diamond drilling	No documentation
1972-1974	Magi Gold Mines Ltd. (fiche: Hawkins; 0015-0018)	Induced polarization and magnetic surveys, 3 diamond drill holes (907 feet)	Minor finely disseminated sulfides
1979-1980	St. Josephs Exploration Ltd. (fiche: Hawkins; 0012, 0013)	Magnetometer, VLF, HLEM Surveys	5 VLF anomalies, very weak HLEM anomalies
1980-1981	Sulpetro Minerals Ltd.: (fiche: Hawkins; 0011)	Geological survey, surface sampling	Encouraging assay values, highest value 20.91 g/t Au (no width reported)
1983-1986	Falconbridge Exploration Ltd. (fiche: Hawkins; 0035)	Geochemical and geophysical surveys, trenching, diamond drilling (79 holes for 14,200 m)	Defined auriferous shear zone with values of 0.5 to 4.0 g/t Au over 4 to 30 m widths
1999-2004	Don McKinnon (WP Hawkins-2)	Trenching, stripping, ground geophysics, diamond drilling (1 hole 217 m)	Presently claim 1229072, exposed wide alteration zone
<b><i>Shenango Mine (legacy claim 1229071)</i></b>			
1935-1937	Shenango Mining Co.	Trenching (1000 ft.), channel sampling, exploration shaft (52 ft. deep), adit (90 ft.), open cut mining, diamond drilling (2500 ft.)	Assays average 0.140 oz./ton over 5 ft. wide and 400 ft. of strike length
1937-1941	Shenango Mining Co.	Diamond drilling (400 ft.), trenching, production shaft (135 ft.)	Reported assay results underground; 0.14 oz./ton over 30 ft., 0.18 oz./ton over 20 ft. 0.22 oz./ton over 15 ft. 0.17 oz./ton over 8 ft.
1945	Shenango Mining Co. (fiche: Hawkins; 0019)	Clean up operation at mill	Recovery of 35.87 ounces of gold and 5 ounces of silver
1979-1981	St. Josephs Exploration	Ground geophysics including	Samples taken from muck pile

	Ltd. (fiche: Hawkins; 0012, 0013)	I.P., geological mapping and sampling	returned assays of: 7.54 g/t, 6.69 g/t, 52.4 g/t
1983-1986	Falconbridge Exploration Ltd. (fiche: Hawkins; 0021-0035)	Geochemical and geophysical survey (I.P.), trenching, diamond drilling	Defined auriferous shear zone with values of 0.5 to 4.0 g/t Au over 4 to 30 m widths
2000-2004	Don McKinnon (WT Hawkins-30)	ground geophysics, stripping, trenching, Diamond drilling (2 holes; 214 meters)	Presently claim 1229072, exposed wide alteration zone
<b>Goldfields and Johnstone-Barnes Showings</b>			
1939	Johnstone and Barnes	Trenching, sampling, presently claim 4266186	Gold occurrence discovered, reported assay of 0.24 oz./ton over 35 ft.
1975	Rio Tinto Canadian (fiche: Hawkins; 0010)	Ground geophysics, diamond drilling (2 holes; 902 ft.)	No available results
1986	Hawk Resources (fiche: Hawkins; 0042, WT2, WT16, WT19)	Ground geophysics, geochemistry, diamond drilling (20 holes; 6151 ft.)	South of McKinnon Property, results discouraging
1986-1989	Goldfields Canadian Mining Ltd. (fiche: Hawkins; WT 11, WT20, WT21)	Geology, sampling, diamond drilling (13 holes; 1780 ft.)	Results incorporated in Aurlot Exploration Ltd., 1989 report below
1989	Aurlot Exploration Ltd. (fiche: Hawkins; WT13, WT17, WT18)	Geology, sampling, geochemistry, airborne geophysics, stripping, trenching,	Channel sample assays reflected results; 1.31 oz./ton over 3 ft., 0.74 oz./ton over 5 ft., 0.42 oz./ton over 2 ft., 0.40 oz./ton over 2 ft., 0.21 oz./ton over 5 ft., 0.11 oz./ton over 2 ft., presently claim 4266187
<i>Source: Boissoneault 2004</i>			

Exploration work on the McKinnon Property by Falconbridge in 1983 to 1986 included 79 drill holes for a total of 14,200 m and extensive surface trenching. This drilling and trenching defined an auriferous shear zone with values of 0.5 to 4.0 g/t Au over 4 to 30 m widths along a 3.7 km trend (Morrison, 1985). Pavey Ark has a complete set of Falconbridge drill records with sample numbers, sample intervals and assay results for the drill holes and surface trenching.

The Ontario Geological Survey (2015) released results of a helicopter mounted Geotech VTEM plus magnetic and electromagnetic surveys flown at 200 m line spacing that covered Hawkins Township and adjacent townships.

In 2016, Pavey Ark re-excavated 7 former Falconbridge trenches and exposed the McKinnon gold deposit over a strike length of approximately 600 m. Pavey Ark submitted 42 grab samples for gold assay from the trenches. The highest sample contained 4.35 g/t Au with 7 samples reporting over 1 g/t Au. Also in 2016, Pavey Ark resampled Falconbridge drill core samples and submitted 70 samples for assay that replicated the original Falconbridge assay intervals. Additionally, 6 certified reference standards and 4 blanks were submitted for QA/QC purposes. The re-assay program was successful in confirming significant gold values in the Falconbridge drill core. The program has validated the historical assays as being acceptable for



use in a NI43-101 resource estimate and provided a QA/QC program with certified reference materials, duplicates and blanks.

Sunvest Minerals Inc. optioned the property from Pavey Ark in late 2016 and drilled 13 holes for a total of 1,624 m on the McKinnon deposit in early 2017. The best intercept in the program was in hole HW-17-13 that intersected 1.72 g/t Au over a width of 16.0 meters, including a higher-grade interval from 71.0-meter depth of 4.28 g/t Au over 4.3 m.

## **5.0 Geology**

The McKinnon Deposit contains gold mineralization associated with the Puskuta deformation zone, a steeply north dipping dextral, transcurrent fault structure that on a regional scale bounds the south side of the Kabinakagami Lake greenstone belt and extends for approximately 60 km to the southeast through Hawkins, Walls, Minnipuka and Puskuta Townships (Leclair, 1990; Wilson, 1993). LeClair and Sullivan (1991) report a U-Pb titanite age of 2,665 Ma for mylonite related to the Puskuta Deformation zone.

In Hawkins Township the Property is underlain by predominately Archean rocks of the Kabinakagami Lake greenstone belt and by Archean granodiorite to tonalite plutons. The Archean rocks are intruded by Proterozoic diabase dikes of the Hearst swarm. The area was originally mapped by Maynard (1929) with more recent mapping by Wilson (1993).

Wilson (1993) describes mafic to intermediate metavolcanic rocks as the dominant rock type in the Kabinakagami greenstone belt. In Hawkins Township, these rocks are strongly foliated and of amphibolite metamorphic grade. Felsic metavolcanic rocks are locally observed in Hawkins Township. Wilson (1993) describes quartz porphyry, and to a lesser extent, quartz-feldspar porphyry, sills and dikes as a prominent feature in western Hawkins Township. The dikes and sills are light grey to white on their weathered surfaces and contain up to 15 percent, 5 mm to 15 mm opalescent quartz eyes in a siliceous fine grained groundmass.

The tonalite mapped by Wilson (1993) in central Hawkins Township is described as sheared, light grey to white, with a cataclastic texture. This tonalite separates the two units of metavolcanic rocks in Hawkins Township and occurs along the south side of the Puskuta shear zone. Clots of sulphides (pyrite and chalcopyrite) and quartz are prominent within the tonalite in the 500 m to 1000 m wide deformed zone.

In central Hawkins Township, Wilson (1993) describes the gold showings as occurring in quartz veins at the strongly sheared northern contact of the tonalite intrusion with mafic metavolcanic rocks. Gold is associated with well-developed sericite-silica-pyrite alteration in sheared host rocks.

## 6.0 Channel Sampling Program

R. H. Sutcliffe laid out the location of the channels on September 6 and 7, 2019. Channels were cut and samples were taken by A-Star Prospecting under the supervision of Greg Smith between September 6 to 8, 2019 (Figure 2). Channels were sampled starting in the south and advancing to the north. Start and finish UTM coordinates were measured with a hand held Garmin ETREX GPS. Samples were all 1.0 m in length. A metal tag with the sample number was affixed to the bedrock beside the channel.

**Figure 2. A-Star Prospecting cutting channel samples, Hawkins Property, Sept 7, 2019.**



Sample descriptions, locations and results are presented in Appendix 2. The general location of the channels is shown in figure 3. Sample locations are shown on Map 2.

**Figure 3. Location of Channel Samples relative to claim 156307**



Source: Google Earth 2019

Pavey Ark submitted a total of 30 samples including 1 certified reference standard. Pavey Ark's samples were transported to the office of Clark Exploration in Thunder Bay where they were examined by R.H. Sutcliffe on September 30, 2019 and taken to sample receiving facilities of Actlabs in Thunder Bay where they were analyzed.

At Actlabs, each sample was prepared using Actlabs's RX1 preparation code consisting of drying, crushing to 80% passing 2mm, splitting (250g) and final pulverizing to 95% passing 105µm. Silica abrasive is used to clean the pulverizer between each sample.

The pulverized samples were analyzed for gold with Actlabs 1A2 method code consisting of a fire assay on a 30 g sample aliquot with an atomic absorption finish (FA/AA). This method has detection limits of 0.005 g/t Au. No other elements were analyzed. Actlabs assay's certificate is presented in Appendix 3.

Pavey Ark inserted an OREAS 18c certified reference standard into the channel samples for QA/QC. The result is presented in Table 2 below.

<b>Table 3. Results for OREAS 18c reference material</b>		
	<b>Certified value +/- 1SD</b>	<b>Actlabs result Au g/t</b>
<b>OREAS 18c</b>	3.52 +/- 0.11	3.20

The Actlab result for OREAS 18c is more than 2SD below the certified value. This indicates that the Actlab's results appear to be low.

## **7.0 Conclusions and Recommendations**

The channel sampling program was successful in confirming the location of the surface exposure of the McKinnon gold deposit. Gold mineralization is hosted in silica-pyrite-sericite altered tonalite immediately south of the amphibolite/tonalite contact.

The McKinnon Gold Property contains significant gold mineralization associated with a well-defined structure and alteration system. The property has potential for delineation of additional mineralization and further exploration is warranted. Recommendations include an IP geophysical survey to assist in defining drill targets, plus further diamond drilling, and metallurgical testwork.

## **8.0 References**

Boissoneault, J.R., 2004, Technical Report on the Don McKinnon Property, for Baltic Resources Inc., August 17, 2004, 25 p.

Lahti, H. R. 1989, Report on the Hawkins Property, Hawkins Township, Ontario, for Aurlot Exploration Ltd., November 15, 1989, AFRI 42C16NE8216.

Leclair, A.D., Ernst, R.E., and Hattori, K. 1993. Crustal scale auriferous shear zones in the central Superior province, Canada. *Geology*, v. 21, pp. 399-402.

Maynard, J.E. 1929, Oba Area, District of Algoma, Ontario Department of Mines, Annual Report 1929, v. 38, pt. 6, pp. 114-125.

Morrison I.R. (1984) Trenching Program on the Gervais Option, Oba Property, 1984, NTS: 42C 16. Internal Report for Falconbridge Limited, Winnipeg, Manitoba.

Ontario Geological Survey, 2015. Airborne magnetic and electromagnetic surveys, colour-filled contours of the residual magnetic field and electromagnetic anomalies, Kabinakagami Lake area; Ontario, Geological Survey, Map 82 754, scale 1:50 000.

Rogers, G.P. (1987) Falconbridge Limited Diamond Drill Report, Gervais Option, 1986-1987, NTS: 42C 16. Internal Report for Falconbridge Limited, Winnipeg, Manitoba.

Wilson, A.C., 1993, Geology of the Kabinakagami Lake Greenstone Belt, Ontario Geological Survey, Open File Report 5787, 80 p.

## 9.0 Statement of Qualifications

I, Richard H. Sutcliffe, of 130 Foxridge Drive, Ancaster, Ontario, do hereby certify that:

I am a graduate of University of Toronto (B.Sc. Geology, 1977, M.Sc Geology 1980), and a graduate of University of Western Ontario (Ph.D. Geology, 1986) and I have been practising my profession as a geologist since.

I am a member with the Association of Professional Geoscientists of Ontario (#852).

I have direct knowledge of the exploration work performed for this assessment and I am indirectly the owner of the claims on which the work was performed.

*Signed*

*"R.H. Sutcliffe"*

Richard H. Sutcliffe, Ph.D., P.Geo.

October 26, 2019

Ancaster, Ontario

**Appendix 1. Hawkins Property Claims (as of Oct 26, 2019)**

Township / Area	Tenure ID	Tenure Type	Anniversary Date	Tenure Status	Tenure Percentage	Work Required	Work Applied	Total Reserve
WALLS	269687	Single Cell Mining Claim	2019-10-30	Active	100	400	0	0
WALLS	165725	Single Cell Mining Claim	2019-10-30	Active	100	400	0	0
DERRY,HAWKINS	295675	Single Cell Mining Claim	2019-10-30	Active	100	400	0	0
HAWKINS	324395	Single Cell Mining Claim	2019-10-30	Active	100	400	0	0
HAWKINS	258302	Single Cell Mining Claim	2019-10-30	Active	100	400	0	0
HAWKINS	241253	Single Cell Mining Claim	2019-10-30	Active	100	400	0	0
HAWKINS	241252	Single Cell Mining Claim	2019-10-30	Active	100	400	0	0
HAWKINS	241251	Single Cell Mining Claim	2019-10-30	Active	100	400	0	0
HAWKINS	229082	Single Cell Mining Claim	2019-10-30	Active	100	400	0	0
HAWKINS	191194	Single Cell Mining Claim	2019-10-30	Active	100	400	0	0
HAWKINS	175175	Single Cell Mining Claim	2019-10-30	Active	100	400	0	0
HAWKINS	175174	Single Cell Mining Claim	2019-10-30	Active	100	400	0	0
HAWKINS	127804	Single Cell Mining Claim	2019-10-30	Active	100	400	0	0
HAWKINS	127803	Single Cell Mining Claim	2019-10-30	Active	100	400	0	0
HAWKINS	117578	Single Cell Mining Claim	2019-10-30	Active	100	400	0	0
HAWKINS	117577	Single Cell Mining Claim	2019-10-30	Active	100	400	0	0
HAWKINS	102276	Single Cell Mining Claim	2019-10-30	Active	100	400	0	0
HAWKINS	102275	Single Cell Mining Claim	2019-10-30	Active	100	400	0	0
DERRY,HAWKINS	336751	Single Cell Mining Claim	2019-10-30	Active	100	400	0	0
DERRY,HAWKINS	336750	Single Cell Mining Claim	2019-10-30	Active	100	400	0	0
DERRY,HAWKINS	324394	Single Cell Mining Claim	2019-10-30	Active	100	400	0	0
HAWKINS	102334	Single Cell Mining Claim	2019-10-30	Active	100	400	0	0
HAWKINS	340069	Single Cell Mining Claim	2019-10-30	Active	100	400	0	0
HAWKINS	338780	Single Cell Mining Claim	2019-10-30	Active	100	400	0	0
HAWKINS	327675	Single Cell Mining Claim	2019-10-30	Active	100	400	0	0
HAWKINS	299084	Single Cell Mining Claim	2019-10-30	Active	100	400	0	0
HAWKINS	299083	Single Cell Mining Claim	2019-10-30	Active	100	400	0	0
HAWKINS	184610	Single Cell Mining Claim	2019-10-30	Active	100	400	0	0
HAWKINS	120580	Single Cell Mining Claim	2019-10-30	Active	100	400	0	0
HAWKINS	118610	Single Cell Mining Claim	2019-10-30	Active	100	400	0	0
HAWKINS	102332	Single Cell Mining Claim	2019-10-30	Active	100	400	0	0
HAWKINS	279134	Single Cell Mining Claim	2019-10-30	Active	100	400	0	0
HAWKINS	279133	Single Cell Mining Claim	2019-10-30	Active	100	400	0	0
HAWKINS	278368	Single Cell Mining Claim	2019-10-30	Active	100	400	0	0
HAWKINS	278367	Single Cell Mining Claim	2019-10-30	Active	100	400	0	0
HAWKINS	276877	Single Cell Mining Claim	2019-10-30	Active	100	400	0	0
HAWKINS	260953	Single Cell Mining Claim	2019-10-30	Active	100	400	0	0
HAWKINS	258352	Single Cell Mining Claim	2019-10-30	Active	100	400	0	0

HAWKINS	191768	Single Cell Mining Claim	2019-10-30	Active	100	400	0	0
HAWKINS	177269	Single Cell Mining Claim	2019-10-30	Active	100	400	0	0
HAWKINS	129838	Single Cell Mining Claim	2019-10-30	Active	100	400	0	0
HAWKINS	119495	Single Cell Mining Claim	2019-10-30	Active	100	400	0	0
HAWKINS	289195	Single Cell Mining Claim	2019-10-30	Active	100	400	0	0
HAWKINS	281096	Single Cell Mining Claim	2019-10-30	Active	100	400	0	0
HAWKINS	233127	Single Cell Mining Claim	2019-10-30	Active	100	400	0	0
HAWKINS	185304	Single Cell Mining Claim	2019-10-30	Active	100	400	0	0
HAWKINS	121299	Single Cell Mining Claim	2019-10-30	Active	100	400	0	0
WALLS	104008	Single Cell Mining Claim	2019-10-30	Active	100	400	0	0
WALLS	340122	Single Cell Mining Claim	2019-10-30	Active	100	400	0	0
WALLS	289259	Single Cell Mining Claim	2019-10-30	Active	100	400	0	0
WALLS	271093	Single Cell Mining Claim	2019-10-30	Active	100	400	0	0
WALLS	260334	Single Cell Mining Claim Boundary Cell Mining	2019-10-30	Active	100	400	0	0
WALLS	260333	Claim	2019-10-30	Active	100	200	0	0
WALLS	252018	Single Cell Mining Claim	2019-10-30	Active	100	400	0	0
WALLS	245888	Single Cell Mining Claim	2019-10-30	Active	100	400	0	0
WALLS	232479	Single Cell Mining Claim Boundary Cell Mining	2019-10-30	Active	100	400	0	0
WALLS	224495	Claim	2019-10-30	Active	100	200	0	0
WALLS	224494	Single Cell Mining Claim	2019-10-30	Active	100	400	0	0
WALLS	184655	Single Cell Mining Claim Boundary Cell Mining	2019-10-30	Active	100	400	0	0
WALLS	179137	Claim	2019-10-30	Active	100	200	0	0
WALLS	165724	Boundary Cell Mining Claim	2019-10-30	Active	100	200	0	0
WALLS	165723	Single Cell Mining Claim	2019-10-30	Active	100	400	0	0
WALLS	160341	Single Cell Mining Claim	2019-10-30	Active	100	400	0	0
WALLS	120639	Single Cell Mining Claim Boundary Cell Mining	2019-10-30	Active	100	400	0	0
WALLS	104010	Claim	2019-10-30	Active	100	200	0	0
WALLS	104009	Single Cell Mining Claim	2019-10-30	Active	100	400	0	0
WALLS	120541	Single Cell Mining Claim Boundary Cell Mining	2019-11-04	Active	100	400	400	0
WALLS	327643	Claim	2019-11-04	Active	100	200	200	0
WALLS	299049	Single Cell Mining Claim	2019-11-04	Active	100	400	400	0
WALLS	280388	Single Cell Mining Claim Boundary Cell Mining	2019-11-04	Active	100	400	400	0
WALLS	280387	Claim	2019-11-04	Active	100	200	200	0
WALLS	261736	Boundary Cell Mining Claim	2019-11-04	Active	100	200	200	0
WALLS	232367	Single Cell Mining Claim Boundary Cell Mining	2019-11-04	Active	100	400	400	0
WALLS	159024	Claim	2019-11-04	Active	100	200	200	0
WALLS	120542	Single Cell Mining Claim Boundary Cell Mining	2019-11-04	Active	100	400	400	0
WALLS	111706	Claim	2019-11-04	Active	100	200	200	0
WALLS	339251	Single Cell Mining Claim	2019-11-04	Active	100	400	200	0
WALLS	299818	Single Cell Mining Claim	2019-11-04	Active	100	400	400	0



WALLS	263160	Boundary Cell Mining Claim	2019-11-04	Active	100	200	200	0
WALLS	251176	Single Cell Mining Claim	2019-11-04	Active	100	400	400	0
WALLS	251175	Boundary Cell Mining Claim	2019-11-04	Active	100	200	200	0
WALLS	195939	Single Cell Mining Claim	2019-11-04	Active	100	400	400	0
WALLS	195938	Single Cell Mining Claim	2019-11-04	Active	100	400	400	0
WALLS	184411	Single Cell Mining Claim	2019-11-04	Active	100	400	400	0
WALLS	177087	Boundary Cell Mining Claim	2019-11-04	Active	100	200	200	0
WALLS	161906	Single Cell Mining Claim	2019-11-04	Active	100	400	400	0
WALLS	147810	Single Cell Mining Claim	2019-11-04	Active	100	400	400	0
LEGGE	103402	Single Cell Mining Claim	2019-11-04	Active	100	400	400	0
LEGGE	268416	Single Cell Mining Claim	2019-11-04	Active	100	400	400	0
LEGGE	184349	Single Cell Mining Claim	2019-11-04	Active	100	400	400	0
LEGGE	177490	Single Cell Mining Claim	2019-11-04	Active	100	400	400	0
LEGGE	131699	Single Cell Mining Claim	2019-11-04	Active	100	400	400	0
LEGGE	119866	Single Cell Mining Claim	2019-11-04	Active	100	400	400	0
LEGGE	326980	Single Cell Mining Claim	2019-11-04	Active	100	400	400	0
LEGGE	298365	Single Cell Mining Claim	2019-11-04	Active	100	400	400	0
LEGGE	243909	Single Cell Mining Claim	2019-11-04	Active	100	400	400	0
LEGGE	223734	Single Cell Mining Claim	2019-11-04	Active	100	400	400	0
LEGGE	183919	Single Cell Mining Claim	2019-11-04	Active	100	400	400	0
LEGGE	177891	Single Cell Mining Claim	2019-11-04	Active	100	400	400	0
LEGGE	158361	Single Cell Mining Claim	2019-11-04	Active	100	400	400	0
LEGGE	158360	Single Cell Mining Claim	2019-11-04	Active	100	400	400	0
LEGGE	119033	Single Cell Mining Claim	2019-11-04	Active	100	400	400	0
LEGGE	119032	Single Cell Mining Claim	2019-11-04	Active	100	400	400	0
LEGGE	117537	Single Cell Mining Claim	2019-11-04	Active	100	400	400	0
LEGGE,MINNIPUKA	306163	Single Cell Mining Claim	2019-11-04	Active	100	400	400	0
LEGGE,MINNIPUKA	256909	Single Cell Mining Claim	2019-11-04	Active	100	400	400	0
LEGGE,MINNIPUKA	190151	Single Cell Mining Claim	2019-11-04	Active	100	400	400	0
LEGGE,MINNIPUKA	175134	Single Cell Mining Claim	2019-11-04	Active	100	400	400	0
LEGGE	312895	Single Cell Mining Claim	2019-11-04	Active	100	400	400	0
LEGGE	293494	Single Cell Mining Claim	2019-11-04	Active	100	400	400	0
LEGGE	288322	Single Cell Mining Claim	2019-11-04	Active	100	400	400	0
LEGGE	190152	Single Cell Mining Claim	2019-11-04	Active	100	400	400	0
LEGGE	172731	Single Cell Mining Claim	2019-11-04	Active	100	400	400	0
LEGGE	172730	Single Cell Mining Claim	2019-11-04	Active	100	400	400	0
LEGGE	172729	Single Cell Mining Claim	2019-11-04	Active	100	400	400	0
LEGGE	336706	Single Cell Mining Claim	2019-11-04	Active	100	400	400	0
LEGGE	276281	Single Cell Mining Claim	2019-11-04	Active	100	400	400	0
LEGGE	127758	Single Cell Mining Claim	2019-11-04	Active	100	400	400	0
MINNIPUKA	324352	Single Cell Mining Claim	2019-11-04	Active	100	400	400	0
MINNIPUKA	288321	Single Cell Mining Claim	2019-11-04	Active	100	400	400	0

MINNIPUKA	155713	Single Cell Mining Claim	2019-11-04	Active	100	400	400	0
MINNIPUKA	127756	Single Cell Mining Claim	2019-11-04	Active	100	400	400	0
LEGGE,MINNIPUKA	336705	Single Cell Mining Claim	2019-11-04	Active	100	400	400	0
LEGGE,MINNIPUKA	155714	Single Cell Mining Claim	2019-11-04	Active	100	400	400	0
LEGGE,MINNIPUKA	127757	Single Cell Mining Claim	2019-11-04	Active	100	400	400	0
LEGGE	324353	Single Cell Mining Claim	2019-11-04	Active	100	400	400	0
LEGGE	288323	Single Cell Mining Claim	2019-11-04	Active	100	400	400	0
LEGGE	276280	Single Cell Mining Claim	2019-11-04	Active	100	400	400	0
PUSKUTA	103355	Single Cell Mining Claim	2019-11-07	Active	100	400	400	0
PUSKUTA	338671	Single Cell Mining Claim	2019-11-07	Active	100	400	400	0
PUSKUTA	329796	Single Cell Mining Claim	2019-11-07	Active	100	400	400	0
PUSKUTA	251086	Single Cell Mining Claim	2019-11-07	Active	100	400	400	0
PUSKUTA	251085	Single Cell Mining Claim	2019-11-07	Active	100	400	400	0
PUSKUTA	243060	Single Cell Mining Claim	2019-11-07	Active	100	400	400	0
PUSKUTA	199061	Single Cell Mining Claim	2019-11-07	Active	100	400	400	0
PUSKUTA	186902	Single Cell Mining Claim	2019-11-07	Active	100	400	400	0
PUSKUTA	177027	Single Cell Mining Claim	2019-11-07	Active	100	400	400	0
PUSKUTA	177026	Single Cell Mining Claim	2019-11-07	Active	100	400	400	0
PUSKUTA	158336	Single Cell Mining Claim	2019-11-07	Active	100	400	400	0
PUSKUTA	131180	Single Cell Mining Claim	2019-11-07	Active	100	400	400	0
PUSKUTA	131179	Single Cell Mining Claim	2019-11-07	Active	100	400	400	0
PUSKUTA	122987	Single Cell Mining Claim	2019-11-07	Active	100	400	400	0
PUSKUTA	118996	Single Cell Mining Claim	2019-11-07	Active	100	400	400	0
PUSKUTA	103375	Single Cell Mining Claim	2019-11-07	Active	100	400	400	0
PUSKUTA	302271	Single Cell Mining Claim	2019-11-07	Active	100	400	400	0
PUSKUTA	290203	Single Cell Mining Claim	2019-11-07	Active	100	400	400	0
PUSKUTA	282885	Single Cell Mining Claim	2019-11-07	Active	100	400	400	0
PUSKUTA	253714	Single Cell Mining Claim	2019-11-07	Active	100	400	400	0
PUSKUTA	245645	Single Cell Mining Claim	2019-11-07	Active	100	400	400	0
PUSKUTA	243892	Single Cell Mining Claim	2019-11-07	Active	100	400	400	0
PUSKUTA	205876	Single Cell Mining Claim	2019-11-07	Active	100	400	400	0
PUSKUTA	205875	Single Cell Mining Claim	2019-11-07	Active	100	400	400	0
PUSKUTA	179463	Single Cell Mining Claim	2019-11-07	Active	100	400	400	0
PUSKUTA	122988	Single Cell Mining Claim	2019-11-07	Active	100	400	400	0
PUSKUTA	119843	Single Cell Mining Claim	2019-11-07	Active	100	400	400	0
PUSKUTA	108789	Single Cell Mining Claim	2019-11-07	Active	100	400	400	0
LEGGE	177835	Single Cell Mining Claim	2019-11-07	Active	100	400	400	0
PUSKUTA	231180	Single Cell Mining Claim	2019-11-07	Active	100	400	400	0
PUSKUTA	223693	Single Cell Mining Claim	2019-11-07	Active	100	400	400	0
PUSKUTA	164445	Single Cell Mining Claim	2019-11-07	Active	100	400	400	0
PUSKUTA	118995	Single Cell Mining Claim	2019-11-07	Active	100	400	400	0
LEGGE,PUSKUTA	339365	Single Cell Mining Claim	2019-11-07	Active	100	400	400	0
LEGGE,PUSKUTA	279180	Single Cell Mining Claim	2019-11-07	Active	100	400	400	0

LEGGE,PUSKUTA	223712	Single Cell Mining Claim	2019-11-07	Active	100	400	400	0
LEGGE,PUSKUTA	223711	Single Cell Mining Claim	2019-11-07	Active	100	400	400	0
LEGGE	326958	Single Cell Mining Claim	2019-11-07	Active	100	400	400	0
LEGGE	279205	Single Cell Mining Claim	2019-11-07	Active	100	400	400	0
LEGGE	243893	Single Cell Mining Claim	2019-11-07	Active	100	400	400	0
LEGGE	243868	Single Cell Mining Claim	2019-11-07	Active	100	400	400	0
PUSKUTA	105549	Single Cell Mining Claim	2019-11-25	Active	100	400	400	0
PUSKUTA	322506	Single Cell Mining Claim	2019-11-25	Active	100	400	400	0
PUSKUTA	285264	Single Cell Mining Claim	2019-11-25	Active	100	400	400	0
PUSKUTA	285263	Boundary Cell Mining Claim	2019-11-25	Active	100	200	200	0
PUSKUTA	256106	Single Cell Mining Claim	2019-11-25	Active	100	400	400	0
PUSKUTA	239374	Single Cell Mining Claim	2019-11-25	Active	100	400	400	0
PUSKUTA	239373	Single Cell Mining Claim	2019-11-25	Active	100	400	400	0
PUSKUTA	227255	Single Cell Mining Claim	2019-11-25	Active	100	400	400	0
PUSKUTA	219294	Single Cell Mining Claim	2019-11-25	Active	100	400	400	0
PUSKUTA	172623	Single Cell Mining Claim	2019-11-25	Active	100	400	400	0
PUSKUTA	153862	Single Cell Mining Claim	2019-11-25	Active	100	400	400	0
PUSKUTA	153861	Single Cell Mining Claim	2019-11-25	Active	100	400	400	0
PUSKUTA	153860	Single Cell Mining Claim	2019-11-25	Active	100	400	400	0
PUSKUTA	137435	Single Cell Mining Claim	2019-11-25	Active	100	400	200	0
PUSKUTA	105550	Single Cell Mining Claim	2019-11-25	Active	100	400	400	0
PUSKUTA	255511	Single Cell Mining Claim	2019-11-25	Active	100	400	400	0
PUSKUTA	236015	Single Cell Mining Claim	2019-11-25	Active	100	400	400	0
WALLS	163691	Boundary Cell Mining Claim	2019-11-25	Active	100	200	200	0
WALLS	338104	Single Cell Mining Claim	2019-11-25	Active	100	400	400	0
WALLS	312897	Single Cell Mining Claim	2019-11-25	Active	100	400	400	0
WALLS	293497	Boundary Cell Mining Claim	2019-11-25	Active	100	200	200	0
WALLS	261737	Boundary Cell Mining Claim	2019-11-25	Active	100	200	200	0
WALLS	256912	Single Cell Mining Claim	2019-11-25	Active	100	400	400	0
WALLS	256911	Boundary Cell Mining Claim	2019-11-25	Active	100	200	200	0
WALLS	202296	Boundary Cell Mining Claim	2019-11-25	Active	100	200	200	0
WALLS	190155	Single Cell Mining Claim	2019-11-25	Active	100	400	400	0
WALLS	190154	Single Cell Mining Claim	2019-11-25	Active	100	400	400	0
WALLS	184576	Single Cell Mining Claim	2019-11-25	Active	100	400	400	0
WALLS	178556	Single Cell Mining Claim	2019-11-25	Active	100	400	400	0
WALLS	163694	Single Cell Mining Claim	2019-11-25	Active	100	400	400	0
PUSKUTA	251649	Single Cell Mining Claim	2019-11-25	Active	100	400	400	0
PUSKUTA	251648	Single Cell Mining Claim	2019-11-25	Active	100	400	400	0
PUSKUTA	197007	Single Cell Mining Claim	2019-11-25	Active	100	400	400	0
PUSKUTA	184350	Single Cell Mining Claim	2019-11-25	Active	100	400	400	0
WALLS	129172	Single Cell Mining Claim	2019-11-25	Active	100	400	400	0

WALLS	278473	Single Cell Mining Claim	2019-11-25	Active	100	400	400	0
WALLS	277688	Single Cell Mining Claim	2019-11-25	Active	100	400	400	0
WALLS	230453	Single Cell Mining Claim	2019-11-25	Active	100	400	400	0
WALLS	230452	Boundary Cell Mining Claim	2019-11-25	Active	100	200	200	0
WALLS	192588	Boundary Cell Mining Claim	2019-11-25	Active	100	200	200	0
WALLS	163693	Single Cell Mining Claim	2019-11-25	Active	100	400	400	0
WALLS	163692	Boundary Cell Mining Claim	2019-11-25	Active	100	200	200	0
WALLS	123204	Single Cell Mining Claim	2019-12-21	Active	100	400	400	0
WALLS	337201	Single Cell Mining Claim	2019-12-21	Active	100	400	400	0
WALLS	330285	Boundary Cell Mining Claim	2019-12-21	Active	100	200	200	0
WALLS	268555	Boundary Cell Mining Claim	2019-12-21	Active	100	200	200	0
WALLS	212579	Boundary Cell Mining Claim	2019-12-21	Active	100	200	200	0
WALLS	194572	Single Cell Mining Claim	2019-12-21	Active	100	400	400	0
WALLS	175057	Single Cell Mining Claim	2019-12-21	Active	100	400	400	0
WALLS	130393	Boundary Cell Mining Claim	2019-12-21	Active	100	200	200	0
WALLS	118935	Single Cell Mining Claim	2019-12-21	Active	100	400	400	0
WALLS	253351	Boundary Cell Mining Claim	2019-12-21	Active	100	200	200	0
WALLS	246685	Boundary Cell Mining Claim	2019-12-21	Active	100	200	200	0
WALLS	234528	Single Cell Mining Claim	2019-12-21	Active	100	400	400	0
WALLS	186676	Single Cell Mining Claim	2019-12-21	Active	100	400	400	0
WALLS	181159	Boundary Cell Mining Claim	2019-12-21	Active	100	200	200	0
WALLS	161689	Single Cell Mining Claim	2019-12-21	Active	100	400	400	0
WALLS	123206	Boundary Cell Mining Claim	2019-12-21	Active	100	200	200	0
WALLS	123205	Single Cell Mining Claim	2019-12-21	Active	100	400	400	0
WALLS	228635	Single Cell Mining Claim	2019-12-21	Active	100	400	400	0
WALLS	307941	Boundary Cell Mining Claim	2019-12-21	Active	100	200	200	0
WALLS	307940	Boundary Cell Mining Claim	2019-12-21	Active	100	200	200	0
WALLS	307939	Single Cell Mining Claim	2019-12-21	Active	100	400	400	0
WALLS	240781	Boundary Cell Mining Claim	2019-12-21	Active	100	200	200	0
WALLS	228637	Boundary Cell Mining Claim	2019-12-21	Active	100	200	200	0
WALLS	228636	Single Cell Mining Claim	2019-12-21	Active	100	400	400	0
WALLS	125456	Boundary Cell Mining Claim	2019-12-21	Active	100	200	200	0
WALLS	343679	Single Cell Mining Claim	2019-12-21	Active	100	400	400	0
WALLS	312908	Single Cell Mining Claim	2019-12-21	Active	100	400	400	0
WALLS	312184	Boundary Cell Mining Claim	2019-12-21	Active	100	200	200	0
WALLS	226139	Boundary Cell Mining Claim	2019-12-21	Active	100	200	200	0
WALLS	226138	Single Cell Mining Claim	2019-12-21	Active	100	400	400	0

WALLS	218815	Single Cell Mining Claim	2019-12-21	Active	100	400	400	0
WALLS	189448	Boundary Cell Mining Claim	2019-12-21	Active	100	200	200	0
WALLS	182159	Boundary Cell Mining Claim	2019-12-21	Active	100	200	200	0
WALLS	182158	Single Cell Mining Claim	2019-12-21	Active	100	400	400	0
WALLS	173456	Single Cell Mining Claim	2019-12-21	Active	100	400	400	0
WALLS	306897	Single Cell Mining Claim	2019-12-21	Active	100	400	400	0
WALLS	286699	Boundary Cell Mining Claim	2019-12-21	Active	100	200	200	0
WALLS	247549	Boundary Cell Mining Claim	2019-12-21	Active	100	200	200	0
WALLS	239585	Boundary Cell Mining Claim	2019-12-21	Active	100	200	200	0
WALLS	203527	Single Cell Mining Claim	2019-12-21	Active	100	400	400	0
WALLS	130422	Single Cell Mining Claim	2019-12-21	Active	100	400	400	0
WALLS	337224	Boundary Cell Mining Claim	2019-12-21	Active	100	200	200	0
WALLS	261801	Single Cell Mining Claim	2019-12-21	Active	100	400	400	0
WALLS	235947	Single Cell Mining Claim	2019-12-21	Active	100	400	400	0
WALLS	213099	Boundary Cell Mining Claim	2019-12-21	Active	100	200	200	0
WALLS	213098	Boundary Cell Mining Claim	2019-12-21	Active	100	200	200	0
WALLS	193652	Single Cell Mining Claim	2019-12-21	Active	100	400	400	0
WALLS	176264	Boundary Cell Mining Claim	2019-12-21	Active	100	200	200	0
WALLS	160584	Single Cell Mining Claim	2019-12-21	Active	100	400	400	0
WALLS	136196	Boundary Cell Mining Claim	2019-12-21	Active	100	200	200	0
WALLS	136169	Single Cell Mining Claim	2019-12-21	Active	100	400	400	0
WALLS	342902	Boundary Cell Mining Claim	2019-12-21	Active	100	200	200	0
WALLS	292036	Boundary Cell Mining Claim	2019-12-21	Active	100	200	200	0
WALLS	188151	Single Cell Mining Claim	2019-12-21	Active	100	400	400	0
WALLS	142202	Boundary Cell Mining Claim	2019-12-21	Active	100	200	200	0
WALLS	142201	Boundary Cell Mining Claim	2019-12-21	Active	100	200	200	0
WALLS	104518	Single Cell Mining Claim	2020-02-08	Active	100	400	400	0
WALLS	297111	Boundary Cell Mining Claim	2020-02-08	Active	100	200	200	0
WALLS	278488	Boundary Cell Mining Claim	2020-02-08	Active	100	200	200	0
WALLS	277700	Single Cell Mining Claim	2020-02-08	Active	100	400	400	0
WALLS	259653	Single Cell Mining Claim	2020-02-08	Active	100	400	400	0
WALLS	243167	Single Cell Mining Claim	2020-02-08	Active	100	400	400	0
WALLS	230474	Boundary Cell Mining Claim	2020-02-08	Active	100	200	200	0
WALLS	230473	Single Cell Mining Claim	2020-02-08	Active	100	400	400	0
WALLS	222512	Boundary Cell Mining Claim	2020-02-08	Active	100	200	200	0
WALLS	192604	Single Cell Mining Claim	2020-02-08	Active	100	400	400	0
WALLS	176599	Boundary Cell Mining Claim	2020-02-08	Active	100	200	200	0

WALLS	163714	Single Cell Mining Claim	2020-02-08	Active	100	400	400	0
WALLS	129190	Single Cell Mining Claim	2020-02-08	Active	100	400	400	0
WALLS	118470	Single Cell Mining Claim	2020-02-08	Active	100	400	400	0
WALLS	118469	Single Cell Mining Claim	2020-02-08	Active	100	400	400	0
PUSKUTA	119341	Single Cell Mining Claim	2020-02-08	Active	100	400	400	0
PUSKUTA	340723	Single Cell Mining Claim	2020-02-08	Active	100	400	400	0
PUSKUTA	328300	Boundary Cell Mining Claim	2020-02-08	Active	100	200	200	0
PUSKUTA	280543	Boundary Cell Mining Claim	2020-02-08	Active	100	200	200	0
PUSKUTA	280542	Single Cell Mining Claim	2020-02-08	Active	100	400	400	0
PUSKUTA	269782	Single Cell Mining Claim	2020-02-08	Active	100	400	400	0
PUSKUTA	269781	Single Cell Mining Claim	2020-02-08	Active	100	400	400	0
PUSKUTA	245256	Single Cell Mining Claim	2020-02-08	Active	100	400	400	0
PUSKUTA	233072	Boundary Cell Mining Claim	2020-02-08	Active	100	200	200	0
PUSKUTA	233071	Boundary Cell Mining Claim	2020-02-08	Active	100	200	200	0
PUSKUTA	225079	Boundary Cell Mining Claim	2020-02-08	Active	100	200	200	0
PUSKUTA	185247	Single Cell Mining Claim	2020-02-08	Active	100	400	400	0
PUSKUTA	179218	Single Cell Mining Claim	2020-02-08	Active	100	400	400	0
PUSKUTA	159705	Single Cell Mining Claim	2020-02-08	Active	100	400	400	0
PUSKUTA	159704	Single Cell Mining Claim	2020-02-08	Active	100	400	400	0
MINNIPUKA	342326	Single Cell Mining Claim	2020-02-08	Active	100	400	400	182
MINNIPUKA	216785	Single Cell Mining Claim	2020-02-08	Active	100	400	400	0
MINNIPUKA	216784	Single Cell Mining Claim	2020-02-08	Active	100	400	400	0
WALLS	118843	Single Cell Mining Claim	2020-02-08	Active	100	400	400	0
WALLS	215886	Single Cell Mining Claim	2020-02-08	Active	100	400	400	0
WALLS	186602	Single Cell Mining Claim	2020-02-08	Active	100	400	400	0
WALLS	180546	Single Cell Mining Claim	2020-02-08	Active	100	400	400	0
WALLS	167133	Single Cell Mining Claim	2020-02-08	Active	100	400	400	0
WALLS	161082	Single Cell Mining Claim	2020-02-08	Active	100	400	400	0
WALLS	122591	Single Cell Mining Claim	2020-02-08	Active	100	400	400	182
WALLS	122590	Boundary Cell Mining Claim	2020-02-08	Active	100	200	200	0
WALLS	122588	Boundary Cell Mining Claim	2020-02-08	Active	100	200	200	0
WALLS	188130	Single Cell Mining Claim	2020-02-08	Active	100	400	400	182
WALLS	136152	Single Cell Mining Claim	2020-02-08	Active	100	400	400	182
MINNIPUKA,WALLS	254902	Single Cell Mining Claim	2020-02-08	Active	100	400	400	182
MINNIPUKA,WALLS	236782	Single Cell Mining Claim	2020-02-08	Active	100	400	400	182
MINNIPUKA,WALLS	188129	Single Cell Mining Claim	2020-02-08	Active	100	400	400	182
MINNIPUKA	342369	Single Cell Mining Claim	2020-02-08	Active	100	400	400	182
MINNIPUKA	304126	Single Cell Mining Claim	2020-02-08	Active	100	400	400	182
MINNIPUKA	304125	Single Cell Mining Claim	2020-02-08	Active	100	400	400	182
MINNIPUKA	283941	Single Cell Mining Claim	2020-02-08	Active	100	400	400	182
MINNIPUKA	254901	Single Cell Mining Claim	2020-02-08	Active	100	400	400	182

MINNIPUKA	235927	Single Cell Mining Claim	2020-02-08	Active	100	400	400	182
MINNIPUKA	235926	Single Cell Mining Claim	2020-02-08	Active	100	400	400	182
MINNIPUKA	142186	Single Cell Mining Claim	2020-02-08	Active	100	400	400	182
PUSKUTA	245255	Single Cell Mining Claim	2020-03-08	Active	100	400	400	0
PUSKUTA	225078	Single Cell Mining Claim	2020-03-08	Active	100	400	400	0
PUSKUTA	179217	Single Cell Mining Claim	2020-03-08	Active	100	400	400	0
PUSKUTA	111730	Single Cell Mining Claim	2020-03-08	Active	100	400	400	0
PUSKUTA	339268	Single Cell Mining Claim	2020-03-08	Active	100	400	200	0
PUSKUTA	329870	Single Cell Mining Claim	2020-03-08	Active	100	400	400	0
PUSKUTA	299846	Single Cell Mining Claim Boundary Cell Mining	2020-03-08	Active	100	400	400	0
PUSKUTA	299845	Claim	2020-03-08	Active	100	200	200	0
PUSKUTA	263183	Single Cell Mining Claim	2020-03-08	Active	100	400	400	0
PUSKUTA	251190	Single Cell Mining Claim	2020-03-08	Active	100	400	400	0
PUSKUTA	243159	Single Cell Mining Claim	2020-03-08	Active	100	400	400	0
PUSKUTA	214488	Single Cell Mining Claim	2020-03-08	Active	100	400	400	0
PUSKUTA	214487	Single Cell Mining Claim	2020-03-08	Active	100	400	400	0
PUSKUTA	214486	Single Cell Mining Claim	2020-03-08	Active	100	400	400	0
PUSKUTA	195957	Single Cell Mining Claim	2020-03-08	Active	100	400	400	0
PUSKUTA	184436	Single Cell Mining Claim	2020-03-08	Active	100	400	200	0
PUSKUTA	184435	Single Cell Mining Claim	2020-03-08	Active	100	400	400	0
PUSKUTA	161932	Single Cell Mining Claim	2020-03-08	Active	100	400	400	0
HAWKINS	276969	Single Cell Mining Claim	2020-03-08	Active	100	400	400	22
HAWKINS	337407	Single Cell Mining Claim	2020-03-08	Active	100	400	400	22
HAWKINS	325046	Single Cell Mining Claim	2020-03-08	Active	100	400	400	22
HAWKINS	156306	Single Cell Mining Claim	2020-06-06	Active	100	400	435	35
HAWKINS	229144	Single Cell Mining Claim	2020-06-06	Active	100	400	400	35
HAWKINS	221163	Single Cell Mining Claim	2020-06-06	Active	100	400	435	35
HAWKINS	102324	Single Cell Mining Claim	2020-06-06	Active	100	400	435	35
HAWKINS	336802	Single Cell Mining Claim	2020-06-06	Active	100	400	435	35
HAWKINS	324948	Single Cell Mining Claim	2020-06-06	Active	100	400	435	35
HAWKINS	295736	Single Cell Mining Claim	2020-06-06	Active	100	400	400	35
HAWKINS	258344	Single Cell Mining Claim	2020-06-06	Active	100	400	435	35
HAWKINS	221162	Single Cell Mining Claim	2020-06-06	Active	100	400	400	35
HAWKINS	156307	Single Cell Mining Claim	2020-06-06	Active	100	400	470	35
HAWKINS	127859	Single Cell Mining Claim	2020-06-06	Active	100	400	400	35
HAWKINS	102325	Single Cell Mining Claim	2020-06-06	Active	100	400	435	35
HAWKINS	130877	Single Cell Mining Claim	2020-06-22	Active	100	400	400	0
HAWKINS,WALLS	328402	Single Cell Mining Claim	2020-06-22	Active	100	400	400	0
HAWKINS,WALLS	289229	Single Cell Mining Claim	2020-06-22	Active	100	400	400	0
HAWKINS,WALLS	245858	Single Cell Mining Claim	2020-06-22	Active	100	400	400	0
HAWKINS,WALLS	215125	Single Cell Mining Claim	2020-06-22	Active	100	400	400	0
HAWKINS,WALLS	119427	Single Cell Mining Claim	2020-06-22	Active	100	400	400	0

HAWKINS	297432	Single Cell Mining Claim	2020-06-22	Active	100	400	400	0
HAWKINS	262340	Single Cell Mining Claim	2020-06-22	Active	100	400	400	0
HAWKINS	250292	Single Cell Mining Claim	2020-06-22	Active	100	400	400	0
HAWKINS	242285	Single Cell Mining Claim	2020-06-22	Active	100	400	400	0
HAWKINS	176179	Single Cell Mining Claim	2020-06-22	Active	100	400	400	0
HAWKINS	147572	Single Cell Mining Claim	2020-06-22	Active	100	400	400	0
WALLS	289230	Single Cell Mining Claim	2020-06-22	Active	100	400	400	0
WALLS	281139	Single Cell Mining Claim	2020-06-22	Active	100	400	400	0
WALLS	245859	Single Cell Mining Claim	2020-06-22	Active	100	400	400	0
WALLS	233162	Single Cell Mining Claim	2020-06-22	Active	100	400	400	0
WALLS	185344	Single Cell Mining Claim	2020-06-22	Active	100	400	400	0
WALLS	160312	Single Cell Mining Claim	2020-06-22	Active	100	400	400	0
WALLS	121841	Single Cell Mining Claim	2020-06-22	Active	100	400	400	0
WALLS	104183	Single Cell Mining Claim	2020-06-22	Active	100	400	400	0
WALLS	104182	Single Cell Mining Claim	2020-06-22	Active	100	400	400	0
WALLS	104007	Single Cell Mining Claim	2020-06-22	Active	100	400	400	0
HAWKINS	337457	Single Cell Mining Claim	2020-06-25	Active	100	400	400	0
HAWKINS	296421	Single Cell Mining Claim	2020-06-25	Active	100	400	400	0
HAWKINS	241982	Single Cell Mining Claim	2020-06-25	Active	100	400	400	0
HAWKINS	276375	Single Cell Mining Claim	2020-06-25	Active	100	400	470	435
HAWKINS	258345	Single Cell Mining Claim	2020-06-25	Active	100	400	400	35
HAWKINS	103453	Single Cell Mining Claim	2020-06-25	Active	100	400	400	0
HAWKINS	327034	Single Cell Mining Claim	2020-06-25	Active	100	400	400	47
HAWKINS	298415	Single Cell Mining Claim	2020-06-25	Active	100	400	400	0
HAWKINS	268464	Single Cell Mining Claim	2020-06-25	Active	100	400	400	0
HAWKINS	243960	Single Cell Mining Claim	2020-06-25	Active	100	400	400	0
HAWKINS	231744	Single Cell Mining Claim	2020-06-25	Active	100	400	400	0
HAWKINS	158410	Single Cell Mining Claim	2020-06-25	Active	100	400	400	56
HAWKINS	119091	Single Cell Mining Claim	2020-06-25	Active	100	400	600	0
HAWKINS	104365	Single Cell Mining Claim	2020-06-25	Active	100	400	400	0
HAWKINS	337458	Single Cell Mining Claim	2020-06-25	Active	100	400	400	0
HAWKINS	296420	Single Cell Mining Claim	2020-06-25	Active	100	400	400	0
HAWKINS	241983	Single Cell Mining Claim	2020-06-25	Active	100	400	400	0
HAWKINS	229800	Single Cell Mining Claim	2020-06-25	Active	100	400	400	0
HAWKINS	229799	Single Cell Mining Claim	2020-06-25	Active	100	400	400	0
HAWKINS	221837	Single Cell Mining Claim	2020-06-25	Active	100	400	400	0
HAWKINS	128519	Single Cell Mining Claim	2020-06-25	Active	100	400	400	0
HAWKINS	128518	Single Cell Mining Claim	2020-06-25	Active	100	400	400	0
HAWKINS	119637	Single Cell Mining Claim	2020-06-25	Active	100	400	400	0
MINNIPUKA	133490	Single Cell Mining Claim	2020-07-02	Active	100	400	400	0
WALLS	180545	Single Cell Mining Claim	2020-07-02	Active	100	400	400	0
WALLS	122589	Single Cell Mining Claim	2020-07-02	Active	100	400	400	0
MINNIPUKA,WALLS	233262	Single Cell Mining Claim	2020-07-02	Active	100	400	400	0



MINNIPUKA,WALLS	164631	Single Cell Mining Claim	2020-07-02	Active	100	400	400	0
MINNIPUKA,WALLS	164630	Single Cell Mining Claim	2020-07-02	Active	100	400	400	0
MINNIPUKA	252771	Single Cell Mining Claim	2020-07-02	Active	100	400	400	0
MINNIPUKA	233261	Single Cell Mining Claim	2020-07-02	Active	100	400	400	0
MINNIPUKA	225251	Single Cell Mining Claim	2020-07-02	Active	100	400	400	0
MINNIPUKA	178685	Single Cell Mining Claim	2020-07-02	Active	100	400	400	0
MINNIPUKA	178684	Single Cell Mining Claim	2020-07-02	Active	100	400	400	0
MINNIPUKA	149412	Single Cell Mining Claim	2020-07-02	Active	100	400	400	0
MINNIPUKA	135057	Single Cell Mining Claim	2020-07-02	Active	100	400	400	0
MINNIPUKA	310900	Single Cell Mining Claim	2020-07-02	Active	100	400	400	0
MINNIPUKA	303582	Single Cell Mining Claim	2020-07-02	Active	100	400	400	0
MINNIPUKA	292182	Single Cell Mining Claim	2020-07-02	Active	100	400	400	0
MINNIPUKA	283380	Single Cell Mining Claim	2020-07-02	Active	100	400	400	0
MINNIPUKA	283379	Single Cell Mining Claim	2020-07-02	Active	100	400	400	0
MINNIPUKA	277552	Single Cell Mining Claim	2020-07-02	Active	100	400	400	0
MINNIPUKA	255008	Single Cell Mining Claim	2020-07-02	Active	100	400	400	0
MINNIPUKA	235925	Single Cell Mining Claim	2020-07-02	Active	100	400	400	0
MINNIPUKA	216783	Single Cell Mining Claim	2020-07-02	Active	100	400	400	0
MINNIPUKA	207198	Single Cell Mining Claim	2020-07-02	Active	100	400	400	0
MINNIPUKA	200379	Single Cell Mining Claim	2020-07-02	Active	100	400	400	0
MINNIPUKA	176443	Single Cell Mining Claim	2020-07-02	Active	100	400	400	0
MINNIPUKA	156990	Single Cell Mining Claim	2020-07-02	Active	100	400	400	0
MINNIPUKA	104384	Single Cell Mining Claim	2020-07-02	Active	100	400	400	0
MINNIPUKA	337476	Single Cell Mining Claim	2020-07-02	Active	100	400	400	0
MINNIPUKA	337475	Single Cell Mining Claim	2020-07-02	Active	100	400	400	0
MINNIPUKA	277582	Single Cell Mining Claim	2020-07-02	Active	100	400	400	0
MINNIPUKA	242524	Single Cell Mining Claim	2020-07-02	Active	100	400	400	0
MINNIPUKA	242523	Single Cell Mining Claim	2020-07-02	Active	100	400	400	0
MINNIPUKA	242522	Single Cell Mining Claim	2020-07-02	Active	100	400	400	0
MINNIPUKA	229822	Single Cell Mining Claim	2020-07-02	Active	100	400	400	0
MINNIPUKA	222366	Single Cell Mining Claim	2020-07-02	Active	100	400	400	0
MINNIPUKA	222365	Single Cell Mining Claim	2020-07-02	Active	100	400	400	0
MINNIPUKA	176444	Single Cell Mining Claim	2020-07-02	Active	100	400	400	0
MINNIPUKA	176442	Single Cell Mining Claim	2020-07-02	Active	100	400	400	0
MINNIPUKA	163062	Single Cell Mining Claim	2020-07-02	Active	100	400	400	0
MINNIPUKA	129054	Single Cell Mining Claim	2020-07-02	Active	100	400	400	0
MINNIPUKA	119669	Single Cell Mining Claim	2020-07-02	Active	100	400	400	0
MINNIPUKA	112071	Single Cell Mining Claim	2020-07-02	Active	100	400	400	0
MINNIPUKA	335913	Single Cell Mining Claim	2020-07-02	Active	100	400	400	0
MINNIPUKA	315000	Single Cell Mining Claim	2020-07-02	Active	100	400	400	0
MINNIPUKA	277159	Single Cell Mining Claim	2020-07-02	Active	100	400	400	0
MINNIPUKA	277158	Single Cell Mining Claim	2020-07-02	Active	100	400	400	0
MINNIPUKA	260513	Single Cell Mining Claim	2020-07-02	Active	100	400	400	0

MINNIPUKA	248501	Single Cell Mining Claim	2020-07-02	Active	100	400	400	0
MINNIPUKA	240445	Single Cell Mining Claim	2020-07-02	Active	100	400	400	0
MINNIPUKA	204522	Single Cell Mining Claim	2020-07-02	Active	100	400	400	0
MINNIPUKA	174269	Single Cell Mining Claim	2020-07-02	Active	100	400	400	0
MINNIPUKA	159785	Single Cell Mining Claim	2020-07-02	Active	100	400	400	0
MINNIPUKA	139723	Single Cell Mining Claim	2020-07-02	Active	100	400	400	0
MINNIPUKA	139722	Single Cell Mining Claim	2020-07-02	Active	100	400	400	0
MINNIPUKA	112072	Single Cell Mining Claim	2020-07-02	Active	100	400	400	0
LEGGE,MINNIPUKA	177008	Single Cell Mining Claim	2020-07-02	Active	100	400	400	0
MINNIPUKA	317078	Single Cell Mining Claim	2020-07-02	Active	100	400	400	0
MINNIPUKA	262556	Single Cell Mining Claim	2020-07-02	Active	100	400	400	0
MINNIPUKA	195861	Single Cell Mining Claim	2020-07-02	Active	100	400	400	0
MINNIPUKA	195860	Single Cell Mining Claim	2020-07-02	Active	100	400	400	0
MINNIPUKA	183818	Single Cell Mining Claim	2020-07-02	Active	100	400	400	0
MINNIPUKA	183817	Single Cell Mining Claim	2020-07-02	Active	100	400	400	0
MINNIPUKA	161824	Single Cell Mining Claim	2020-07-02	Active	100	400	400	0
MINNIPUKA	161823	Single Cell Mining Claim	2020-07-02	Active	100	400	400	0
MINNIPUKA	147732	Single Cell Mining Claim	2020-07-02	Active	100	400	400	0
MINNIPUKA	131154	Single Cell Mining Claim	2020-07-02	Active	100	400	400	0
MINNIPUKA	131033	Single Cell Mining Claim	2020-07-02	Active	100	400	400	0
MINNIPUKA	131031	Single Cell Mining Claim	2020-07-02	Active	100	400	400	0
LEGGE,MINNIPUKA	279507	Single Cell Mining Claim	2020-07-02	Active	100	400	400	0
LEGGE,MINNIPUKA	243034	Single Cell Mining Claim	2020-07-02	Active	100	400	400	0
LEGGE,MINNIPUKA	177009	Single Cell Mining Claim	2020-07-02	Active	100	400	400	0
LEGGE	108933	Single Cell Mining Claim	2020-07-02	Active	100	400	400	0
MINNIPUKA	317564	Single Cell Mining Claim	2020-07-02	Active	100	400	400	0
MINNIPUKA	298086	Single Cell Mining Claim	2020-07-02	Active	100	400	400	0
MINNIPUKA	298085	Single Cell Mining Claim	2020-07-02	Active	100	400	400	0
MINNIPUKA	184203	Single Cell Mining Claim	2020-07-02	Active	100	400	400	0
MINNIPUKA	131032	Boundary Cell Mining Claim	2020-07-02	Active	100	200	200	0
MINNIPUKA	120197	Boundary Cell Mining Claim	2020-07-02	Active	100	200	200	0
LEGGE,MINNIPUKA	213074	Single Cell Mining Claim	2020-07-02	Active	100	400	400	0
LEGGE,MINNIPUKA	120199	Boundary Cell Mining Claim	2020-07-02	Active	100	400	400	0
LEGGE,MINNIPUKA	120198	Boundary Cell Mining Claim	2020-07-02	Active	100	200	200	0
LEGGE	263024	Boundary Cell Mining Claim	2020-07-02	Active	100	400	400	0
LEGGE	263023	Boundary Cell Mining Claim	2020-07-02	Active	100	200	200	0
LEGGE	184204	Single Cell Mining Claim	2020-07-02	Active	100	400	400	0
HAWKINS	118998	Single Cell Mining Claim	2020-08-10	Active	100	400	412	0
HAWKINS	338837	Single Cell Mining Claim	2020-08-10	Active	100	400	400	0
HAWKINS	279182	Single Cell Mining Claim	2020-08-10	Active	100	400	400	0
HAWKINS	277548	Single Cell Mining Claim	2020-08-10	Active	100	400	400	0

HAWKINS	277547	Single Cell Mining Claim	2020-08-10	Active	100	400	400	0
HAWKINS	268377	Single Cell Mining Claim	2020-08-10	Active	100	400	400	0
HAWKINS	261026	Single Cell Mining Claim	2020-08-10	Active	100	400	400	0
HAWKINS	243874	Single Cell Mining Claim	2020-08-10	Active	100	400	400	0
HAWKINS	243873	Single Cell Mining Claim	2020-08-10	Active	100	400	400	0
HAWKINS	223696	Single Cell Mining Claim	2020-08-10	Active	100	400	400	0
HAWKINS	183888	Single Cell Mining Claim	2020-08-10	Active	100	400	400	0
HAWKINS	177840	Single Cell Mining Claim	2020-08-10	Active	100	400	400	0
HAWKINS	177839	Single Cell Mining Claim	2020-08-10	Active	100	400	400	0
HAWKINS	177838	Single Cell Mining Claim	2020-08-10	Active	100	400	400	0
HAWKINS	158320	Single Cell Mining Claim	2020-08-10	Active	100	400	400	0
HAWKINS	119375	Single Cell Mining Claim	2020-09-22	Active	100	400	400	0
HAWKINS	281072	Single Cell Mining Claim	2020-09-22	Active	100	400	400	0
HAWKINS	269827	Single Cell Mining Claim	2020-09-22	Active	100	400	400	0
HAWKINS	269826	Single Cell Mining Claim	2020-09-22	Active	100	400	400	0
HAWKINS	251933	Single Cell Mining Claim	2020-09-22	Active	100	400	400	0
HAWKINS	251932	Single Cell Mining Claim	2020-09-22	Active	100	400	400	0
HAWKINS	159736	Single Cell Mining Claim	2020-09-22	Active	100	400	400	0
HAWKINS	119583	Single Cell Mining Claim	2020-10-07	Active	100	400	400	0
HAWKINS	327015	Single Cell Mining Claim	2020-10-07	Active	100	400	400	0
HAWKINS	298390	Single Cell Mining Claim	2020-10-07	Active	100	400	400	0
HAWKINS	258958	Single Cell Mining Claim	2020-10-07	Active	100	400	400	0
HAWKINS	231725	Single Cell Mining Claim	2020-10-07	Active	100	400	400	0
HAWKINS	231724	Single Cell Mining Claim	2020-10-07	Active	100	400	400	0
HAWKINS	231723	Single Cell Mining Claim	2020-10-07	Active	100	400	400	0
HAWKINS	231722	Single Cell Mining Claim	2020-10-07	Active	100	400	400	0
HAWKINS	165001	Single Cell Mining Claim	2020-10-07	Active	100	400	400	0
HAWKINS	165000	Single Cell Mining Claim	2020-10-07	Active	100	400	400	0
HAWKINS	119350	Single Cell Mining Claim	2020-10-07	Active	100	400	400	0
HAWKINS	340738	Single Cell Mining Claim	2020-10-07	Active	100	400	400	0
HAWKINS	277690	Single Cell Mining Claim	2020-10-07	Active	100	400	400	0
HAWKINS	222501	Single Cell Mining Claim	2020-10-07	Active	100	400	400	0
HAWKINS	163699	Single Cell Mining Claim	2020-10-07	Active	100	400	400	0
HAWKINS	289017	Single Cell Mining Claim	2020-10-07	Active	100	400	400	0
HAWKINS	289016	Single Cell Mining Claim	2020-10-07	Active	100	400	400	0
HAWKINS	276989	Single Cell Mining Claim	2020-10-07	Active	100	400	400	0
HAWKINS	156415	Single Cell Mining Claim	2020-10-07	Active	100	400	400	0
HAWKINS	156414	Single Cell Mining Claim	2020-10-07	Active	100	400	400	0
HAWKINS	128476	Single Cell Mining Claim	2020-10-07	Active	100	400	400	0
HAWKINS	338113	Single Cell Mining Claim	2020-10-07	Active	100	400	400	0
HAWKINS	338112	Single Cell Mining Claim	2020-10-07	Active	100	400	400	0
HAWKINS	325733	Single Cell Mining Claim	2020-10-07	Active	100	400	400	0
HAWKINS	278476	Single Cell Mining Claim	2020-10-07	Active	100	400	400	0

HAWKINS	222502	Single Cell Mining Claim	2020-10-07	Active	100	400	400	0
HAWKINS	192591	Single Cell Mining Claim	2020-10-07	Active	100	400	400	0
HAWKINS	192590	Single Cell Mining Claim	2020-10-07	Active	100	400	400	0
HAWKINS	192589	Single Cell Mining Claim	2020-10-07	Active	100	400	400	0
HAWKINS	176585	Single Cell Mining Claim	2020-10-07	Active	100	400	400	0
HAWKINS	176584	Single Cell Mining Claim	2020-10-07	Active	100	400	400	0
DERRY,HAWKINS	280536	Single Cell Mining Claim	2020-10-07	Active	100	400	400	0
HAWKINS	233062	Single Cell Mining Claim	2020-10-07	Active	100	400	400	0
HAWKINS	119317	Single Cell Mining Claim	2020-10-07	Active	100	400	400	0
HAWKINS	104079	Single Cell Mining Claim	2020-10-07	Active	100	400	400	0
HAWKINS	155754	Single Cell Mining Claim	2020-10-30	Active	100	400	400	0
HAWKINS	324955	Single Cell Mining Claim	2020-10-30	Active	100	400	400	0
HAWKINS	279132	Single Cell Mining Claim	2020-10-30	Active	100	400	400	0
HAWKINS	269118	Single Cell Mining Claim	2020-10-30	Active	100	400	400	0
HAWKINS	224441	Single Cell Mining Claim	2020-10-30	Active	100	400	400	0
HAWKINS	120579	Single Cell Mining Claim	2020-10-30	Active	100	400	400	0
HAWKINS	288424	Single Cell Mining Claim	2020-10-30	Active	100	400	400	0
HAWKINS	288423	Single Cell Mining Claim	2020-10-30	Active	100	400	400	0
HAWKINS	288422	Single Cell Mining Claim	2020-10-30	Active	100	400	400	0
HAWKINS	243323	Single Cell Mining Claim	2020-10-30	Active	100	400	400	0
HAWKINS	241312	Single Cell Mining Claim	2020-10-30	Active	100	400	400	0
HAWKINS	119494	Single Cell Mining Claim	2020-10-30	Active	100	400	400	0
HAWKINS	102333	Single Cell Mining Claim	2020-10-30	Active	100	400	400	0
HAWKINS	281097	Single Cell Mining Claim	2020-10-30	Active	100	400	400	0
HAWKINS	271044	Single Cell Mining Claim	2020-10-30	Active	100	400	400	0
HAWKINS	271043	Single Cell Mining Claim	2020-10-30	Active	100	400	400	0
HAWKINS	233126	Single Cell Mining Claim	2020-10-30	Active	100	400	400	0
HAWKINS	166359	Single Cell Mining Claim	2020-10-30	Active	100	400	400	0
HAWKINS	104149	Single Cell Mining Claim	2020-10-30	Active	100	400	400	0
HAWKINS	534365	Single Cell Mining Claim	2020-11-07	Active	100	400	0	0
HAWKINS	534366	Single Cell Mining Claim	2020-11-07	Active	100	400	0	0
HAWKINS	534367	Single Cell Mining Claim	2020-11-07	Active	100	400	0	0
HAWKINS	534372	Single Cell Mining Claim	2020-11-07	Active	100	400	0	0
MINNIPUKA	534394	Single Cell Mining Claim	2020-11-08	Active	100	400	0	0

## Appendix 2. Channel Sample locations and descriptions

Lab #	Field Tag	Length	UTM mE	UTM mN	Description
677251	HK19 CH01-01	1.0 m	715177	5430116	Foliated bio tonalite, q. veinlets
677252	HK19 CH01-02	1.0 m			Foliated bio tonalite
677253	HK19 CH01-03	1.0 m			Foliated bio tonalite
677254	HK19 CH01-04	1.0 m			Foliated bio tonalite
677255	HK19 CH01-05	1.0 m			Foliated bio tonalite, pyrite
677256	HK19 CH01-06	1.0 m			Foliated bio tonalite, pyrite
677257	HK19 CH01-07	1.0 m			Foliated bio tonalite, pyrite
677258	HK19 CH01-08	1.0 m			Foliated tonalite, pyrite, sericite
677259	HK19 CH01-09	1.0 m			Foliated bio tonalite
677260	HK19 CH01-10	1.0 m			Foliated bio tonalite, pyrite
677261	HK19 CH01-11	1.0 m			Foliated bio tonalite, pyrite
677262	HK19 CH01-12	1.0 m			Foliated tonalite, pyrite, sericite
677263	HK19 CH01-13	1.0 m			Foliated tonalite, pyrite, musc-qtz vein
677264	HK19 CH01-14	1.0 m			Foliated bio tonalite
677265	HK19 CH01-15	1.0 m			Foliated bio tonalite, minor pyrite
677266	HK19 CH01-16	1.0 m			Foliated bio tonalite, musc-qtz-pyrite vein
677267	HK19 CH01-17	1.0 m			Sericite-biotite schist, minor pyrite
677268	HK19 CH01-18	1.0 m			Sericite-biotite schist, pyrite, qtz-musc vein
677269	HK19 CH01-19	1.0 m			Sericite-biotite schist, pyrite
677270	HK19 CH01-20	1.0 m			Contact – amphibolite/biotite-sericite schist, both with pyrite
677271	HK19 CH01-21	1.0 m			Foliated amphibolite
677272	HK19 CH01-22	1.0 m			Foliated amphibolite, felsite veins
677273	HK19 CH01-23	1.0 m	715169	5430139	Foliated amphibolite, felsite veins
677274	HK19 CH02-01	1.0 m	715083	5430192	Amphibolite
677275	HK19 CH02-02	1.0 m			Amphibolite, minor qtz veins
677276	HK19 CH02-03	1.0 m			Amphibolite, qtz veins
677277	HK19 CH02-04	1.0 m	715083	5430192	Amphibolite, qtz veins
677278	HK19 CH03-01	1.0 m	715081	5430209	Amphibolite, qtz veins
677279	HK19 CH03-02	1.0 m			Amphibolite, qtz veins
677280	OREAS 18C				Reference Material

### **Appendix 3. Actlabs Assay Certificate**

See attachments



Date Submitted: 02-Oct-19
Invoice No.: A19-13402
Invoice Date: 07-Oct-19
Your Reference: Hawkins Project

Pavey Ark Minerals Inc.
130 Foxridge Drive
Ancaster ON L9G 5B9
Canada

ATTN: Richard H. Sutcliffe

CERTIFICATE OF ANALYSIS

30 Rock samples were submitted for analysis.

Table with 2 columns: The following analytical package(s) were requested: and Testing Date:
1A2-Tbay | GOP AA-Au (Au - Fire Assay AA) | 2019-10-04 15:32:21

REPORT A19-13402

This report may be reproduced without our consent. If only selected portions of the report are reproduced, permission must be obtained. If no instructions were given at time of sample submittal regarding excess material, it will be discarded within 90 days of this report. Our liability is limited solely to the analytical cost of these analyses. Test results are representative only of material submitted for analysis.

Notes:

If value exceeds upper limit we recommend reassay by fire assay gravimetric-Code 1A3

CERTIFIED BY:

Handwritten signature of Emmanuel Eseme

Emmanuel Eseme, Ph.D.
Quality Control Coordinator

ACTIVATION LABORATORIES LTD.
1201 Walsh Street West, Thunder Bay, Ontario, Canada, P7E 4X6
TELEPHONE +807 622-6707 or +1.888.228.5227 FAX +1.905.648.9613
E-MAIL Tbay@actlabs.com ACTLABS GROUP WEBSITE www.actlabs.com

Analyte Symbol	Au
Unit Symbol	ppb
Lower Limit	5
Method Code	FA-AA
677251	198
677252	467
677253	452
677254	577
677255	627
677256	1030
677257	842
677258	610
677259	125
677260	526
677261	39
677262	197
677263	223
677264	300
677265	101
677266	137
677267	331
677268	63
677269	275
677270	102
677271	20
677272	10
677273	10
677274	< 5
677275	19
677276	55
677277	< 5
677278	6
677279	< 5
677280	3200



Analyte Symbol	Au
Unit Symbol	ppb
Lower Limit	5
Method Code	FA-AA
OREAS 220 (Fire Assay) Meas	874
OREAS 220 (Fire Assay) Cert	866
OREAS 220 (Fire Assay) Meas	858
OREAS 220 (Fire Assay) Cert	866
OREAS 238 (Fire Assay) Meas	3050
OREAS 238 (Fire Assay) Cert	3030
OREAS 238 (Fire Assay) Meas	2860
OREAS 238 (Fire Assay) Cert	3030
677258 Orig	597
677258 Dup	622
677270 Orig	106
677270 Dup	97
677279 Orig	< 5
677279 Dup	< 5
Method Blank	< 5
Method Blank	< 5
Method Blank	< 5

#### Appendix 4. Expenditures

Item	Units	Unit Cost	Subtotal	HST	Total
<b>Geologist</b>					
R. Sutcliffe, Field management – Sept 6, 7, 2019	2 days	\$650/day	\$1,300.00	\$169.00	\$1,469.00
R. Sutcliffe, Sample logging, data management and reporting – Sept 30, Oct 24, 2019	2 days	\$650/day	\$1,300.00	\$169.00	\$1,469.00
<b>Contractor Services</b>					
A-Star Prospecting – Channel sampling Sept 5 to 8, 2019			\$6,620.00	860.60	7,480.60
<b>Analytical</b>					
Actlabs	30 samples	\$39/sample	\$1,178.25	153.17	1,331.42
<b>Travel</b>					
Personal vehicle – Ancaster/Hearst/Site/Hearst/Ancaster	2,324 km	\$0.50	1,162.00		1,162.00
<b>Food and Accommodation</b>					
Meals	2 days	\$35/day	70.00		70.00
Companion Motel, Hearst	1 night	\$103.20/night	\$103.20	15.63	118.83
<b>Office Supplies &amp; Field consumables</b>					
Copying maps - Staples	40 pages		12.80	1.66	14.46
InReach – Satellite text & safety service			49.55	6.44	55.99
<b>TOTAL EXPENDITURES</b>			<b>\$11,795.80</b>	<b>1,375.50</b>	<b>\$13,171.30</b>

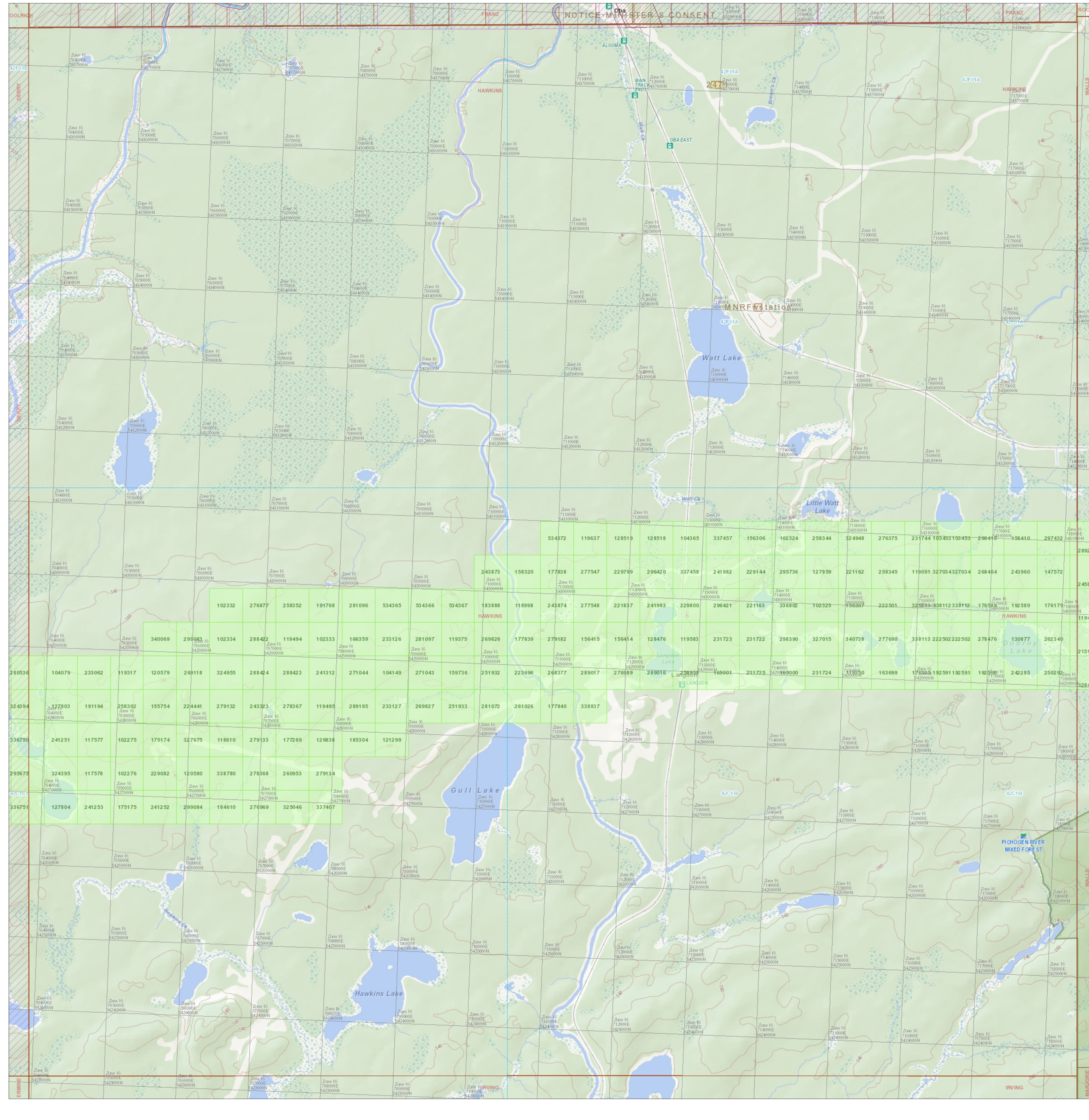


# Ontario Ministry of Northern Development and Mines Mining Lands Claim Map

## Administrative Districts

Township  
*Unknown*  
Mining Division

Land Registry  
  
MNRF District Office  
*Wawa*



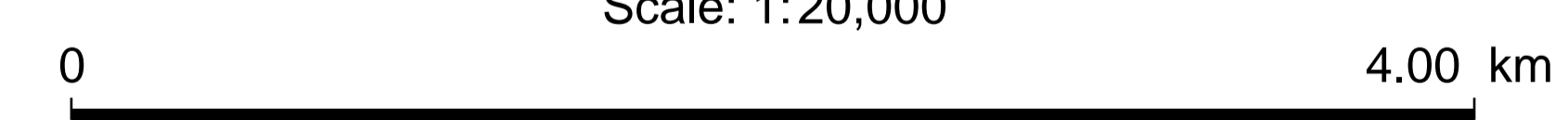
## Topographic

- Building as Symbol
- Building to Scale
- Runway
- Helipad / Helipad Helipod
- Seaplane Base
- Ferry Route
- Trail Head / Trail
- Railway / Train Station
- Railway with Bridge
- Railway with Tunnel
- Road (Major -> Minor)
- Winter Road
- Road with Bridge
- Road with Tunnel
- Primary, King or 400 Series Highway
- Secondary Highway
- Interchange
- District, County, Regional Municipal Road
- One Way Road
- Road with Permanent Social Passage
- Road with Address Ranges
- Hydro Line, Communication Line or Unknown Transmission Line
- Natural Gas Pipeline, Water Pipeline or Unknown Pipeline
- Spot Height
- Index Contour
- Contour
- Wooded Area
- Wetland
- Waterbody
- Waterbody Elevation
- Falls
- Rapids
- Rapids / Falls
- Rock
- Lock Gate
- Dam / Hydro Wall
- Dam / Hydro Wall
- Provincial / State Boundary
- International Boundary
- Upper Tier / District Municipal Boundary
- Lower Tier / Single Tier Municipal Boundary
- Lot Line
- Indian Reserve
- Provincial Park
- National Park
- Conservation Reserve
- Military Lands

## Legend

- Mining Claim
- Boundary Claim
- Legacy Claim
- Alienation
- Withdrawal
- Notice
- ENDM Administrative Boundaries
- Geographic Lot Fabric
- Mining Division
- Land Tenure
- Surface Rights
- Mining and Surface Rights
- Order-in-Council
- Federal Land Other

Scale: 1:20,000




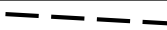



Map Datum: NAD 83  
Projection: Web Mercator



Those wishing to stake mining claims should consult with the Provincial Mining Recorders' Office of the Ministry of Northern Development and Mines for additional information on the status of the lands shown hereon. This map is not intended for navigational, survey, or land title determination purposes as the information shown on this map is compiled from various sources.  
Completeness and accuracy are not guaranteed.

Additional information may also be obtained through the local Land Titles or Registry Office, or the Ministry of Natural Resources and Forestry.  
The information shown is derived from digital data available in the Provincial Mining Recorders' Office at the time of downloading from the Ministry of Northern Development and Mines web site.  
© Queen's Printer for Ontario, 2016

**Map 2. Channel Sampling McKinnon Deposit,  
Hawkins Property  
Claim 156307, Hawkins Township, Sault Ste Marie  
Mining Division, Ontario  
NTS 42C 16 – Kabinakagami Lake  
Datum NAD83, UTM Zone 16U  
For: Pavey Ark Minerals Inc., Client 41165  
Prepared By: R. H. Sutcliffe, P.Geo.  
October 26, 2019**

Legend	
2 Biotite tonalite	Au - Gold
1 Mafic amphibolite	Trail 
Geological Contact 	Sample Number HK19 CH01-01
Quartz Vein 	Channel 
Mineralized Zone 	Outcrop 