

We are committed to providing [accessible customer service](#).

If you need accessible formats or communications supports, please [contact us](#).

Nous tenons à améliorer [l'accessibilité des services à la clientèle](#).

Si vous avez besoin de formats accessibles ou d'aide à la communication, veuillez [nous contacter](#).

SOIL SAMPLING REPORT

on the

SALO-CLARK CLERGUE TWP PROPERTY

PORCUPINE MINING DIVISION

ONTARIO

## TABLE OF CONTENTS

Summary .....	1
Location and Access .....	1
Property Tenure .....	2
Exploration History .....	3
Geology .....	4
Soil Sampling Program .....	4
Soil Sampling Program Results .....	5
Recommendations .....	7

### List of Figures

Figure 1: Property Location Map .....	1
Figure 2: Property Claim Map .....	2
Figure 3: Sample Location Map .....	5
Figure 3: Soil Sampling Results Map .....	6

### List of Tables

Table 1: Historic Exploration .....	3
Table 2: Sample Locations and Results .....	6

## APPENDIX

References

Statement of Qualifications

Assay Certificate

## Summary

The Salo-Clark Clergue Twp Property is located at the southwestern corner of Clergue township. Previous exploration carried out on the property has dominantly focused on gold discovery associated with the Pipestone Fault located proximally to the south. Prior exploration efforts go back as far as 1957 with airborne and ground geophysical surveying, geological mapping, plugger overburden drilling, and one diamond drill hole put down in 1995.

The present program consisted of a one-day soil sampling program being carried out in the western part of the property. Results of the sampling realized up to 0.068 g/mt Au.

## Location and Access

The property is located approximately 43km northeast of Timmins, Ontario. The property can be most easily accessed by turning south on Goldlands Road from Provincial Highway 67 between the villages of Connaught and Porquois, and continuing southward along seasonal tertiary gravel lumber roads to the western part of the property (Figure 1).

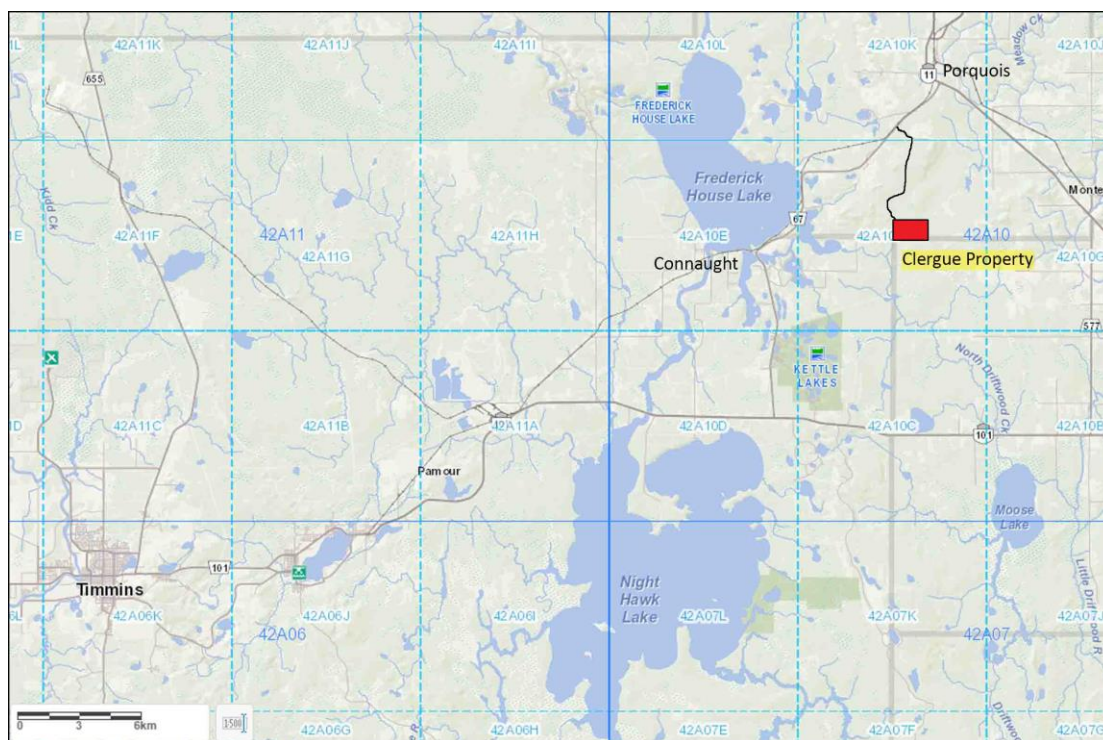


Figure1: Property Location Map

**Property Tenure**

The property consists of 4 unpatented cell mining claims and 3 leased claims encompassing about 144 ha. in area situated in the southwestern corner of Clergue township, Porcupine Mining Division, Ontario (Figure 2). The property is owned by Dawn Salo-Clark of Owen Sound, Ontario.



Figure 2: Property Claim Map

## **Exploration History**

Historic exploration on the property dates back to 1957 with geophysical surveying having been completed by Hollinger Consolidated Gold Mines. Geological mapping by Hollinger identified pillowed rhyolite flows in the south-central part of the property immediately north of the Stock-Clergue township boundary line (Hollinger, 1957). Table 1 lists the historic exploration carried out on the Salo-Clark Clergue Twp Property.

Table 1: Historic Exploration

Assessment File #	Explorer	Year	Program	Results
42A10NW0531	Hollinger Consolidated Gold Mines	1957	Magnetic and electromagnetic ground surveying, geological mapping	Weak geophysical anomalies, pillowed rhyolite volcanics in south-central part of the property
42A10NW0510	Arvo Salo	1986	Airborne magnetic and VLF-electromagnetic survey	Rocks underlying the property are likely andesitic and rhyolitic volcanics, no significant VLF-EM response
42A10NW0511	Arvo Salo	1986	Ground magnetic survey	East-west trending shear zone
42A10NW0507	Arvo Salo	1987	Property overview-local compilation-exploration feasibility report	Recommend continued exploration
42A11NE8828	Arvo Salo	1988	Airborne magnetic, VLF-electromagnetic, and magnetic gradient surveys	Weak to moderate conductors coincident with magnetically identified northwest trending faults
42A10NW0502	Arvo Salo	1990	Plugger overburden drilling	Rhyolitic subcrop
42A10NW0033	Arvo Salo	1995	Diamond drilling – one drill hole; 626 feet	Felsic volcanic, felsic agglomerate, mafic/ultramafic flow rocks

## **Geology**

Geology of the property area is described by Kirwan, 1987, and reads as follows:

*“In general, the claims and the area northward from them are dominated by a succession of mafic and ultramafic lavas and sheet-like bodies that may be sills, all trending northeastward and dipping steeply south about the southeast flank of an anticline.*

*Immediately to the south of the claims these rocks are cut off by the generally east-west-trending Pipestone Fault, a branch of the Destor-Porcupine Fault which occurs about 5 ½ miles (8 km) to the south. In between the two fault zones a thick succession of Precambrian clastic sediments occurs, consisting for the most part of greywackes, but also including argillites, minor conglomerates, and other detrital sedimentary rocks.*

*Immediately northwestward from the ground, field mapping and diamond drilling by various companies indicate the presence of gabbro, diorite, and pyroxenite, with minor andesite and rhyolite, all of which units would extend onto the claims....”*

## **Soil Sampling Program**

On December 6, 2019, Randall Salo and Shelly Moretti ventured to the property and proceeded to sample the “B” Horizon at various locations. Access to the property was afforded by truck east from Timmins and north onto Municipal Road and then east onto Finn Road where a trail through private owned property belonging to the author permitted a trail connection to the series of lumber roads leading to the property from Goldlands Road to the north. Two snowmobiles were used to access the property from the end of Finn Road, approximately a 10km round trip by snow machine was endured.

Eight sample locations were attempted during the day with six being successful in retrieving ample sample medium. A snow shovel, a small spade garden shovel and an axe were utilized for soil recovery. Samples were collected into paper sample bags designed for soil material. Samples were afterward sent to Activation Laboratories in Timmins for analysis of their gold content by 30 gram fire assay method (1A2) with an atomic absorption finish.

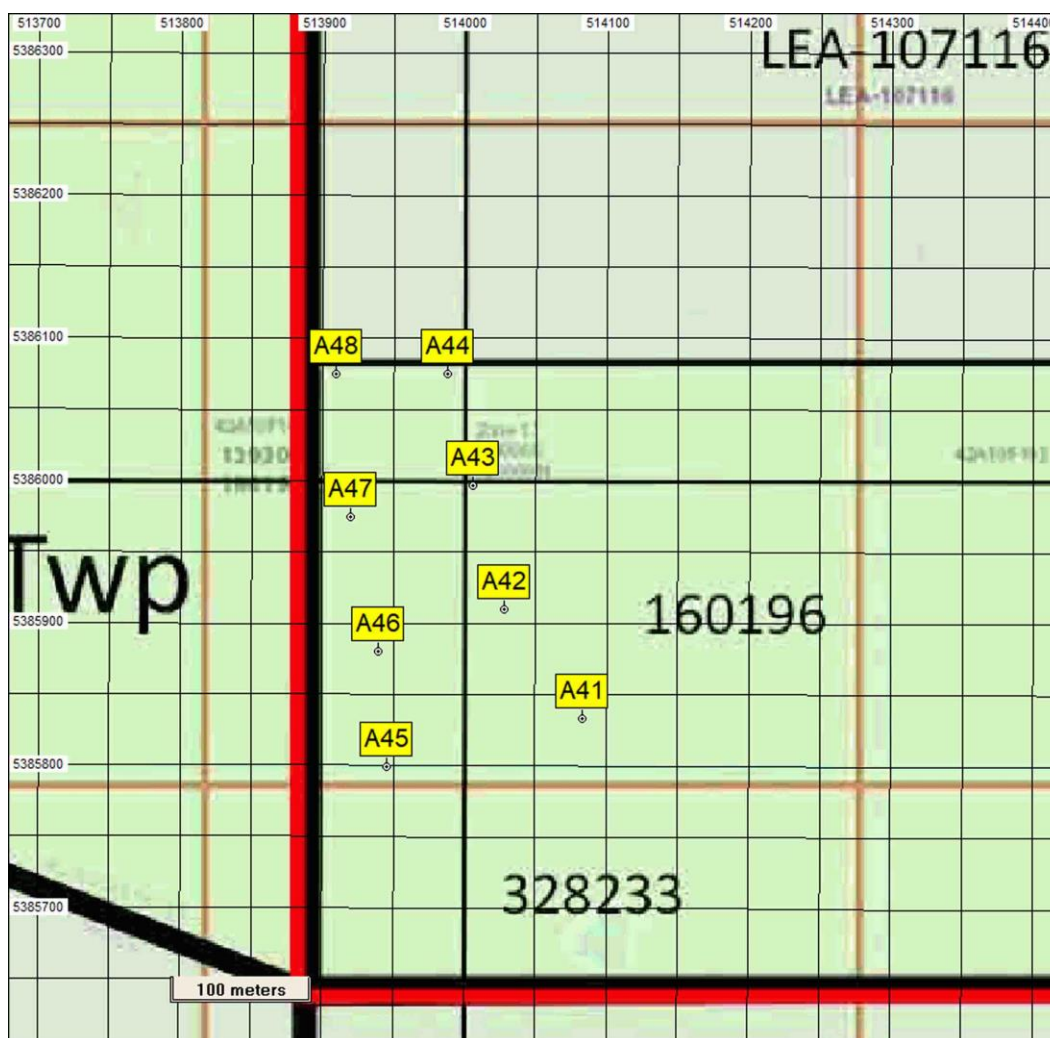


Figure 3: Sample Location Map

### Soil Sampling Program Results

Mixed forest dominated by white spruce with minor poplar and birch trees describes the vegetation in the sampling area along with wide-spread alder growth. Overburden consisted of a thin layer of humus underlain by light brown to medium brown silty-clay material. The interface between the surface decaying vegetation and the silty-clay was the target horizon for the present survey. Samples A43 and A44 saw 40cm of peat covered by 5 centimetres of grass and roots. No sample medium was attained at these locations.

Assay results were encouraging with anomalous gold-in-soil values including 0.009, 0.015, and 0.068 g/mt Au. Table 2 outlines sample locations and results.



Table 2: Sample Locations and Results

Sample No.	UTM Easting	UTM Northing	Au (g/mt)
A41	514083	5385833	<0.005
A42	514028	5385910	0.068
A43	514005	5385998	-----
A44	513988	5386075	-----
A45	513945	5385800	0.009
A46	513940	5385880	0.015
A47	513920	5385975	<0.005
A48	513910	5386075	0.009

(UTM Zone 17, Nad 83)

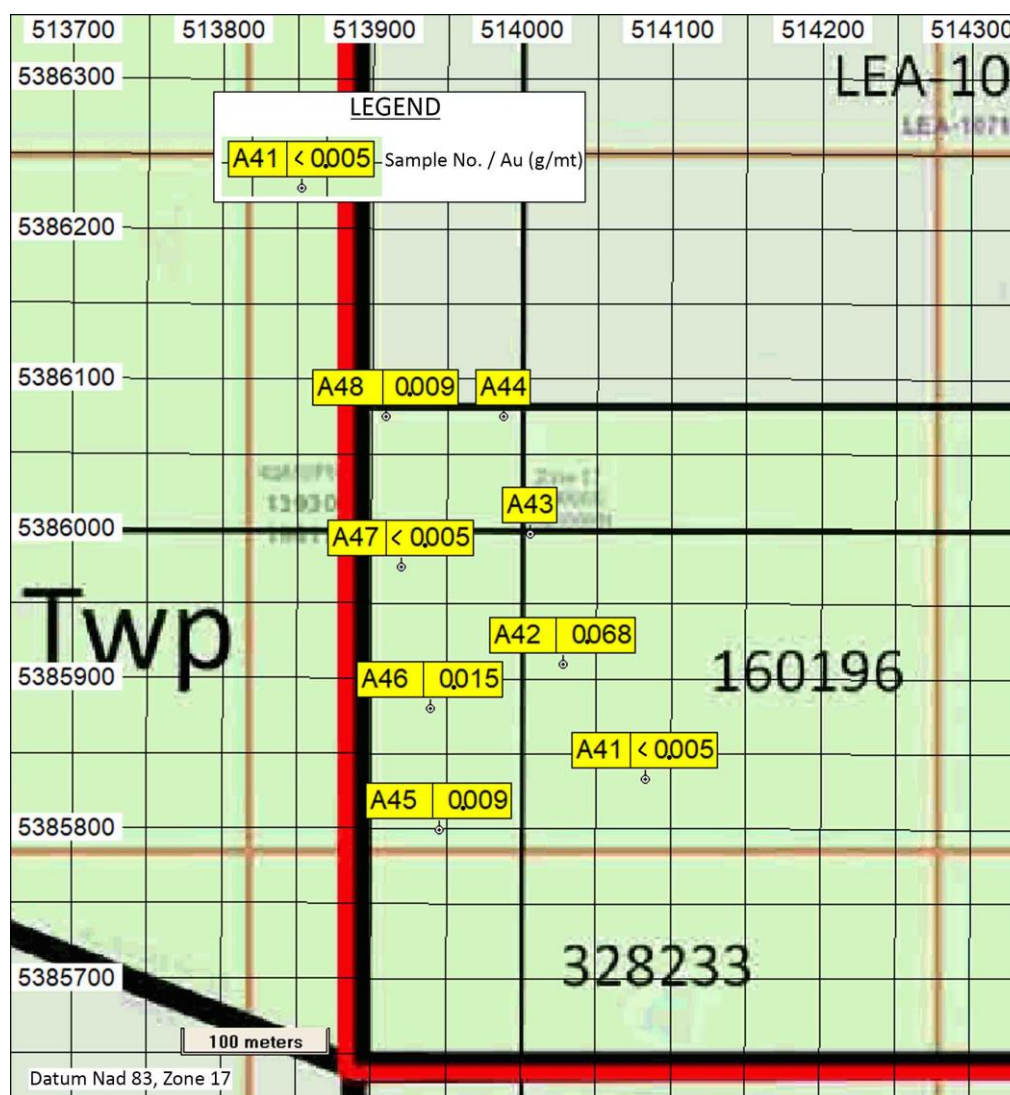


Figure 4: Soil Sampling Results Map

### **Recommendations**

Sampling results from the present program saw gold-in-soil values as high as 0.068 g/mt (68 ppb) in sample A42, which along with sample A46 results of 0.015 g/mt (15 ppb) display a weak gold trend in an east-west direction.

Continued soil sampling is recommended for the Clergue Twp property based on the anomalous results of the current program. The property should be covered at 25 metre sample spacing in an effort to better define gold trends that may reflect gold mineralization associated with a bedrock source.

Secondly, a compilation of the historic data will aid in directing future exploration programs on the Salo-Clark Clergue Twp Property.

Sincerely,

A handwritten signature in black ink that reads "Randall Salo". The signature is written in a cursive, flowing style.

Randall Salo, P.Geol

December 12, 2019

# APPENDIX

## References

Barrie, C.Q., 1986: REPORT ON AN AIRBORNE MAGNETIC AND VLF-EM SURVEY HOYLE AND CLERGUE TOWNSHIP5 MINING DIVISION, ONTARIO for MR. A. SALO by TERRAQUEST LTD. Toronto t Canada November 20, 1986. Assessment File 42A10NW0510.

Barrie, C.Q., 1988: REPORT ON AN AIRBORNE MAGNETIC AND VLF-EM SURVEY CLERGUE TOWNSHIP WARK TOWNSHIP MATHESON AND EVELYN TOWNSHIPS PORCUPINE MINING DIVISION, ONTARIO for MR. A.J. SALO by TERRAQUEST LTD. Toronto, Canada February 24, 1988. Assessment File 42A11NE8828.

Hollinger, 1957: Geophysical and geological map compilation by Hollinger Consolidated Gold Mines. Assessment File 42A10NW0531.

Jensen, K.A., 1986: MAGNETIC SURVEY on the A. Salo Property in Clergue Township Porcupine Mining Division Ontario for Arvo Salo by Kian A. Jensen, B.Se. Consulting Geologist/ Geophysicist June, 1986. Assessment File 42A10NW0511.

Kirwan, J.L., 1987: THE SALO CLERGUE TOWNSHIP CLAIMS PORCUPINE MINING DIVISION ONTARIO John L. Kirwan MSc PhD FRGS FGAC Peng. Assessment File 42A10NW0507.

Salo, A.J., 1995: Report of Diamond Drilling, 1995. Assessment File 42A10NW0033.

## Statement of Qualifications

I, Randall W. Salo of 800 Gervais Street North, Porcupine, Ontario do hereby certify that I:

- am a graduate of Lakehead University with an Honours Bachelor degree in Geology/Physics (1998).
- have been involved and working in mining exploration for more than 35 years in Canada, Mexico and Asia.
- am a member of the Association of Professional Geoscientists of Ontario with member number 1265.
- have included in this report all relevant data derived from both private and public sources.
- I have no interest in the subject property.

Sincerely disclosed,

A handwritten signature in black ink that reads "Randall W. Salo". The signature is written in a cursive, flowing style.

Randall W. Salo, P.Ge

December 12, 2019



Report No.: A19-16713
Report Date: 11-Dec-19
Date Submitted: 06-Dec-19
Your Reference: Clergue

Rock N Roll Prospecting Inc
800 Gervais St. North
Box 1983
Porcupine Ontario P0N 1C0
Canada

ATTN: Randall Salo

CERTIFICATE OF ANALYSIS

6 Soil samples were submitted for analysis.

Table with 2 columns: The following analytical package(s) were requested: and Testing Date:
1A2-Timmins (10g/m t) | QOP AA-Au (Au - Fire Assay AA) | 2019-12-11 08:29:08

REPORT A19-16713

This report may be reproduced without our consent. If only selected portions of the report are reproduced, permission must be obtained. If no instructions were given at time of sample submittal regarding excess material, it will be discarded within 90 days of this report. Our liability is limited solely to the analytical cost of these analyses. Test results are representative only of material submitted for analysis.

Notes:

If value exceeds upper limit we recommend reassay by fire assay gravimetric-Code 1A3.

CERTIFIED BY:

[Handwritten signature]

Emmanuel Eseme , Ph.D.
Quality Control Coordinator

ACTIVATION LABORATORIES LTD.
1752 Riverside Drive, Timmins, Ontario, Canada, P4R 1N1
TELEPHONE +705 264-0123 or +1.888.228.5227 FAX +1.905.648.9613
E-MAIL Timmins@actlabs.com ACTLABS GROUP WEBSITE www.actlabs.com

Analyte Symbol	Au
Unit Symbol	g/mt
Lower Limit	0.005
Method Code	FA-AA
A41	< 0.005
A42	0.068
A45	0.009
A46	0.015
A47	< 0.005
A48	0.009

Analyte Symbol	Au
Unit Symbol	g/mt
Lower Limit	0.005
Method Code	FA-AA
OREAS 254 Fire Assay Meas	2.57
OREAS 254 Fire Assay Cert	2.55
OREAS 254 Fire Assay Meas	2.54
OREAS 254 Fire Assay Cert	2.55
Method Blank	< 0.005
Method Blank	< 0.005



513000

514000

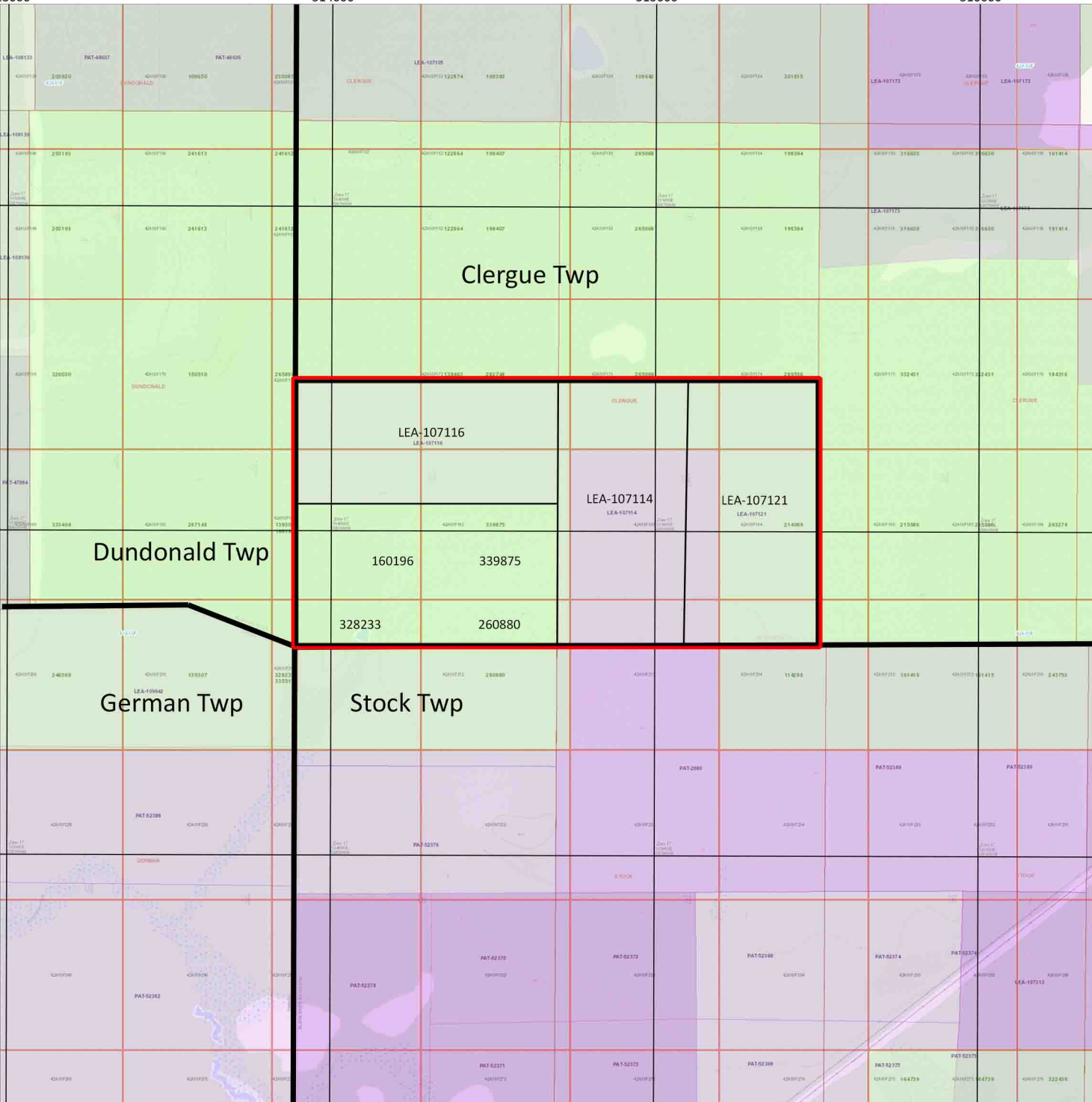
515000

516000

5387000

5386000

5385000



Clergue Twp

Dundonald Twp

German Twp

Stock Twp

LEA-107116

LEA-107114

LEA-107121

160196

339875

328233

260880