

We are committed to providing [accessible customer service](#).

If you need accessible formats or communications supports, please [contact us](#).

Nous tenons à améliorer [l'accessibilité des services à la clientèle](#).

Si vous avez besoin de formats accessibles ou d'aide à la communication, veuillez [nous contacter](#).

**Technical Report  
On the  
West Geraldton Gold Project**

**Thunder Bay Mining District  
Northwestern Ontario, Canada**

**Cells**

**343155 and 267750**

**Prepared for:**

**Mike Goodman and Alex Pleson**

**Prepared by:**

**Alexander J. R. Pleson**

**P. Geo**

**February 3rd, 2020**

**TABLE OF CONTENTS**

1.0	SUMMARY .....	4
2.0	INTRODUCTION .....	5
3.0	PROPERTY DESCRIPTION AND LOCATION .....	5
4.0	ACCESS, CLIMATE, PHYSIOGRAPHY, LOCAL RESOURCES, AND INFRASTRUCTURE.	9
5.0	HISTORY.....	11
6.0	GEOLOGICAL SETTING AND MINERALIZATION .....	13
6.1	Regional Geology .....	13
6.2	Local Geology .....	14
7.0	EXPLORATION WORK .....	18
8.0	EXPLORATION RESULTS AND RECOMMENDATIONS .....	22
9.0	REFERENCES .....	23
10.0	CERTIFICATE OF AUTHOR.....	24

## LIST OF FIGURES

Figure 1: Property Location Map .....	7
Figure 2: Mineral Claim Map.....	8
Figure 3: Regional geological map .....	14
Figure 4: Local geology map .....	17
Figure 5: VLF Survey Grid .....	19
Figure 6a: VLF Conductor Map Overview .....	20
Figure 6b: VLF Conductor Map Detailed.....	21

## LIST OF TABLES

Table 1: Claim Data .....	6
Table 2: Historic Exploration Summary .....	12
Table 3: Historic Gold Production .....	15

## 1.0 SUMMARY

The West Geraldton Gold Project (WGGP), or “the project”, represents a significant mining land package in the heart of the Beardmore-Geraldton gold camp. The property was acquired on April 7<sup>th</sup> 2016 by Michael Goodman of Beardmore, ON and Alex Pleson “the author” of Nipigon, ON. The area consists of 52 mining cell units in Errington Township representing ~832 hectares of land. The project has seen a vast amount of exploration for gold since initial documentation in 1936. A significant amount of prospecting, drilling, and geophysics has been completed since then. However, there is a great lack of data compilation and detailed ground work that exists. The current claim holders intend to fill the gaps and develop the project in the shadows of the potential gold project 14km to the east owned jointly by Centerra Gold and Premier Gold Mines Ltd.

The project described in this report includes an initial attempt to fill in some gaps of geological and geophysical knowledge of the portage shear zone which is the main geological interest of the project. The claims holders hired Phil Houghton of Beardmore, ON to help complete a VLF EM-16 survey to identify any possible targets for further exploration during the field season.

## **2.0 INTRODUCTION**

This report covers the results of a geophysical survey, VLF EM-16, which took place from November 21<sup>st</sup>, 22<sup>nd</sup>, and 23<sup>rd</sup> 2019 on the project. Phil Houghton, Michael Goodman, and the author were present on the property during the time of the survey. Phil Houghton acted as the line flagger and data recorder. The geophysics technician (Mike Goodman) used a Geonic's model EM16 (serial# 3353) to perform the survey which requires a helper to record the position and readings. The complete specifications are available in Appendix D. The geophysics report is listed in Appendix C.

## **3.0 PROPERTY DESCRIPTION AND LOCATION**

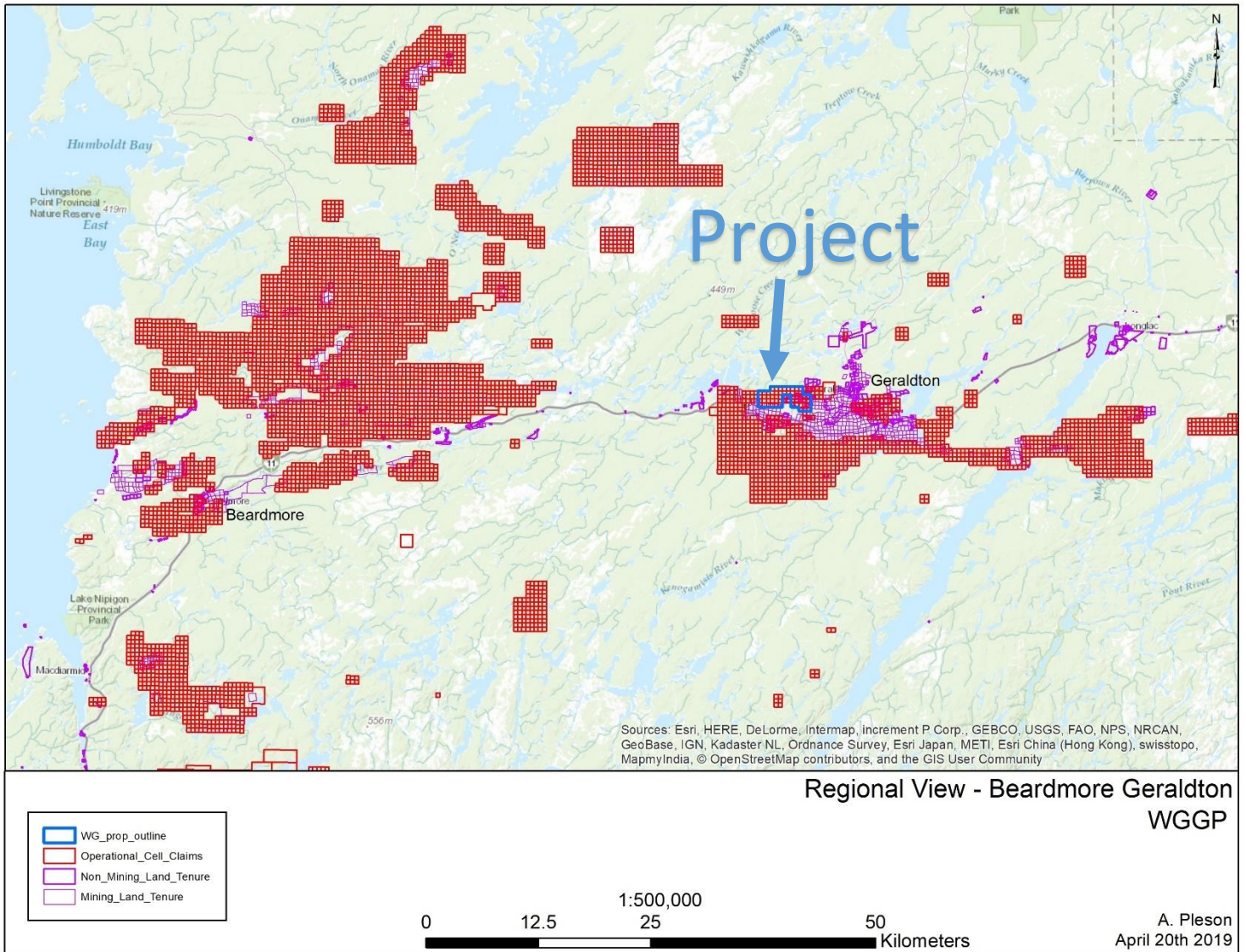
The WG Project is located 275 kilometers northeast of Thunder Bay, Ontario, and approximately 7 kilometers west from the town of Geraldton, Ontario (Figure 1). It is located in Errington Township, in Thunder Bay North Mining Division (NTS 42E11NE). The Kenwell Siding Road bisects the western part of the property and offers direct and excellent road access from the Trans-Canada Highway 11 for 3.2 kilometers. Access can also be obtained by boat from a crude boat landing on Magnet Creek alongside the Trans-Canada Highway 11. Point of access by boat on Magnet Lake in the southern part of the property is by way walking east on the southern claim boundary where a cut baseline exists. This provides quick access to the most parts of the property.

**Table 1: Claim Data**

Magnet Lake Gold Project				
Claim ID	Holder	Due Date	Work Required	Work Required sorted by due date
549472	Pleson (50) Goodman (50)	May 8 2021	400	
514881	Pleson (50) Goodman (50)	April 12 2020	400	1200
514882	Pleson (50) Goodman (50)	April 12 2020	400	
514883	Pleson (50) Goodman (50)	April 12 2020	400	
184097	Pleson (50) Goodman (50)	Aug 14 2019	200	
177314	Pleson (50) Goodman (50)	Aug 14 2019	200	600
177315	Pleson (50) Goodman (50)	Aug 14 2019	200	
310439	Pleson (50) Goodman (50)	August 12 2019	200	
303595	Pleson (50) Goodman (50)	August 12 2019	200	
207215	Pleson (50) Goodman (50)	August 12 2019	200	
141147	Pleson (50) Goodman (50)	August 12 2019	200	
141146	Pleson (50) Goodman (50)	August 12 2019	200	
136327	Pleson (50) Goodman (50)	August 12 2019	200	
188949	Pleson (50) Goodman (50)	August 12 2019	200	
201126	Pleson (50) Goodman (50)	August 12 2019	200	
181514	Pleson (50) Goodman (50)	August 12 2019	200	
142386	Pleson (50) Goodman (50)	August 12 2019	200	
343154	Pleson (50) Goodman (50)	August 12 2019	200	
267748	Pleson (50) Goodman (50)	August 12 2019	200	
147254	Pleson (50) Goodman (50)	August 12 2019	200	
141145	Pleson (50) Goodman (50)	August 12 2019	400	
207214	Pleson (50) Goodman (50)	August 12 2019	400	9000
303596	Pleson (50) Goodman (50)	August 12 2019	400	
255766	Pleson (50) Goodman (50)	August 12 2019	400	
201125	Pleson (50) Goodman (50)	August 12 2019	400	
343155	Pleson (50) Goodman (50)	August 12 2019	400	
181513	Pleson (50) Goodman (50)	August 12 2019	400	
237621	Pleson (50) Goodman (50)	August 12 2019	400	
267750	Pleson (50) Goodman (50)	August 12 2019	400	
130683	Pleson (50) Goodman (50)	August 12 2019	400	
215458	Pleson (50) Goodman (50)	August 12 2019	400	
311666	Pleson (50) Goodman (50)	August 12 2019	400	
237620	Pleson (50) Goodman (50)	August 12 2019	400	
267749	Pleson (50) Goodman (50)	August 12 2019	400	
114175	Pleson (50) Goodman (50)	August 12 2019	400	
332297	Pleson (50) Goodman (50)	August 12 2019	400	
288596	Pleson (50) Goodman (50)	Nov 9 2019	200	
230008	Pleson (50) Goodman (50)	Nov 9 2019	200	800
163241	Pleson (50) Goodman (50)	Nov 9 2019	200	
230007	Pleson (50) Goodman (50)	Nov 9 2019	200	
120274	Pleson (50) Goodman (50)	April 26 2019	200	
184286	Pleson (50) Goodman (50)	April 26 2019	200	
243534	Pleson (50) Goodman (50)	April 26 2019	200	
176924	Pleson (50) Goodman (50)	April 26 2019	400	
329734	Pleson (50) Goodman (50)	April 26 2019	200	
299302	Pleson (50) Goodman (50)	April 26 2019	400	
232604	Pleson (50) Goodman (50)	April 26 2019	200	3000
339588	Pleson (50) Goodman (50)	April 26 2019	200	
178004	Pleson (50) Goodman (50)	April 26 2019	200	
120788	Pleson (50) Goodman (50)	April 26 2019	200	
280603	Pleson (50) Goodman (50)	April 26 2019	200	
184784	Pleson (50) Goodman (50)	April 26 2019	200	
317468	Pleson (50) Goodman (50)	April 26 2019	200	

Work to be distributed to cells shaded above

Figure 1: Property Location Map







## 4.0 ACCESS, CLIMATE, PHYSIOGRAPHY, LOCAL RESOURCES, AND INFRASTRUCTURE

The WG Project is located 275 kilometers northeast of Thunder Bay, Ontario, and approximately 7 kilometers west from the town of Geraldton, Ontario (Figure 1). It is located in Errington Township, in Thunder Bay North Mining Division (NTS 42E11NE). The Kenwell Siding Road bisects the western part of the property and offers direct and excellent road access from the Trans-Canada Highway 11 for 3.2 kilometers. Access can also be obtained by boat from a crude boat landing on Magnet Creek alongside the Trans-Canada Highway 11. Point of access by boat on Magnet Lake in the southern part of the property is by way walking east on the southern claim boundary where a cut baseline exists. This provides quick access to the most parts of the property.

The towns of Beardmore and Geraldton is the closest community, located approximately 70 km west and 14km east, respectively, of the project. Beardmore is part of Greenstone, an amalgamated town encompassing Nakina, Geraldton, Longlac, Beardmore, Caramat, Jellicoe, Macdiarmid and Orient Bay. The population of Greenstone is 4,906 people (Statistics Canada, [www.statcan.gc.ca](http://www.statcan.gc.ca)) and the population of Beardmore is approximately 150 people (<http://www.highway11.ca/ThunderBay/06Beardmore>). Beardmore has limited accommodation and restaurants.

The town of Thunder Bay, located about 275 kilometers from the Property, is the largest city in Northwestern Ontario, serving as a regional commercial Centre. The town is a major source of workforce, contracting services, and transportation for the forestry, pulp and paper and mining industry. Thunder Bay is a transportation hub for Canada, as the TransCanada highways 11 and 17 link eastern and western Canada. It is close to the Canada-U.S. border and highway 61 links Thunder Bay with Minnesota, United States. Thunder Bay has an international airport with daily flights to Toronto, Ontario and Winnipeg, Manitoba, and the United States.

The city of Thunder Bay has most of the required supplies for exploration work including drilling and geophysical survey companies, grocery stores, hardware stores, exploration equipment supply stores, restaurants, hotels, and a hospital. The population of the city of Thunder Bay was 109,140 people in 2006 (Statistics Canada, [www.statcan.gc.ca](http://www.statcan.gc.ca)). Many junior exploration and mining companies are based in Thunder Bay, and thus the city is a source of skilled mining labour.

The height of land ranges from 335 m and 370 meters above sea level. Inferred thickness of overburden varies from bedrock exposure to 21.9 meters as evidenced in the surface trenching program and overburden depths in both the historical and Prodigy's drilling programs. The overburden cover consists of unconsolidated glacial gravely, silty sand diamicton with thin sand and gravel areas in higher relief areas, and thick organic matter and clay in poorly drained lower relief areas. There are prominent northwest-southeast trending sandy eskers in the north part of Errington Township. For the most part, the relief on the property is gentle. The lower relief areas are occupied by



extensive clay-rich swamp and muskeg with poor drainage. An extensive swamp is located west of the 2010 WG drill program, where drainage from Magnet Lake is reflected by a north trending super-saturated swamp. This sparsely vegetated swamp measures 4.5 km by 0.5 km and is poorly drained. The meandering Magnet Creek closely marks the south claim of West Geraldton draining from Barton Bay on Kenogamisis Lake westward to Magnet Lake. For the most part, the property is characterized by less than <1% outcrop cover rock exposure and low-lying outcrop is generally undulating with the glacial cover. Vegetation consists of small black spruce balsam, cedar, and tamarack in the swampy areas with the higher relief areas being a mixture of spruce, poplar, with birch and jack pine being more prominent in the sandy knolls. The topography and vegetation in the area of the drilling is reflected by higher ground with open black spruce. The overburden is characterized by clay in the relatively low-lying area of the trenched area with silty-clay, silty-sand, and gravel in the western part of the trench area.

[http://www.thunderbay.ca/Doing\\_Business/About\\_Thunder\\_Bay.htm](http://www.thunderbay.ca/Doing_Business/About_Thunder_Bay.htm))

## 5.0 HISTORY

Although there are many indications of historical exploration work in the West Geraldton Project area, the earliest known exploration work was carried out between 1936 and 1937, with the most recent being in 1996-97. Exploration work conducted by Portage Long Lac GML (1936-37), New Bidlamaque Mines (1962), and Tenango Exploration (1994) covered the Portage East target area.

Portage Long Lac Gold Mines (1936-37) conducted the original exploration on the claim group, and was limited to trenching and test pits in the early stages of exploration, as a result of thick overburden.

Pye (1951) reported that an aggregate footage of 20,595 feet (6227 meters) in 34 diamond drill holes was drilled. A broad east-west shear was intersected over a strike length of 1.8 kilometers (5900 feet), with gold values over 1.1 kilometer (3600 feet) and widths up to 152 meters. Visible gold was noted in two of the drill holes. This shear has been interpreted as part of the Portage Shear. Highlights of the drilling includes hole 25 which intersected 9.96 g/t Au over 2.04 meters and hole 30, which intersected 11.13 g/t Au over 1.52 meters (Pye – 1951). It has been reported that the best zone for continuous gold intersections covered a strike length of 152 meters (500 ft), averaging 8.21 g/t Au over 1.22 meters (0.24 opt Au over 4 feet). The outbreak of World War II forced the suspension of operations and no further work was carried out until 1962. The historical drilling is located within the Portage East target area.

In 1962, New Bidlamaque Mines Ltd optioned the property from the patented owners and carried out a 610 meter (2000 feet) diamond drill program with no documentation and results being available.

In 1994, Tenango Explorations Inc. carried out IP/magnetic surveys and recommended data compilation and interpretation. There is some correlation between IP chargeability/magnetic features and gold mineralization intersected in the historical drill holes.

The more recent exploration over West Geraldton was conducted in 1996-97 by Cyprus Canada Inc. Their exploration was carried out west of the Portage East target. Surface exploration consisted of line-cutting, VLF-EM/magnetic and IP ground geophysical surveys, and prospecting and mapping in 1996. This was followed up by a four drill-hole drill program totaling 853 meters. No significant gold values were intersected.

The Ontario Geological Survey commissioned an Aerodat Survey in 1988 as part of a regional survey that covered the Tashota-Geraldton-Long Lac areas. No further work was carried out until the patents lapsed, then re-staked in 2007, and worked by Kodiak Exploration Ltd. in 2008. This work concluded that the drill program

was successful in establishing and outlining gold values within the Bonanza Zone trench area. Gold mineralized structures are coincidental to IP chargeability zones, and are spatially associated with magnetic anomalies. It appears that this widespread gold mineralization is part of a regional system that trends for approximately 30 kilometers, and hosts the Little Long Lac Mine (0.6 Moz Au). The Portage East target area is within 5 kilometers west-northwest from the Little Long Lac Mine in Geraldton, along the Portage Shear. Host rock, geometry, and structure along the Portage Shear at Portage East is analogous to greenstone hosted, shear zone related quart-carbonate gold deposits, particularly in the Timmins and Kirkland Lake Gold Camps. Faults and fractures along the Portage Shear provide pathways for auriferous hydrothermal fluid movement. The presence of ferruginous metasediments and iron formation in the Portage East target provide the chemical trap for gold to precipitate in the formation of pyrite. The complex intrusive phases of the feldspar porphyry and diorite bodies provided the heat to the hydrothermal system, with the altered porphyries providing gold mineralization.

A summary of work is presented in Table 2 prior to Kodiak Exploration (*after Roach, 2011*).

**Table 2: Historic Exploration Summary (Roach 2011)**

Company	Year	Description of Historical Exploration Work on West Geraldton
Cyprus Canada Inc.	1997	853 meters of diamond drilling in 4 drill holes – No significant gold results returned
Cyprus Canada Inc.	1996	Line-Cutting, VLF-EM/magnetic surveys, IP survey, prospecting and mapping
Tenango Explorations Inc.	1994	IP and magnetic survey – line km unknown
New Bidlamaque Mines Ltd	1962	2000 ft (610 meters) of diamond drilling – results unknown
Portage Long Lac Gold Mines	1936-37	Prospecting, blasting & trenching, and 20,595 ft (6227 meters) of diamond drilling in 34 diamond drill holes – highlights include Hole 25 which intersected 9.96 g/t Au over 2.04 meters and Hole 30, which intersected 11.13 g/t Au over 1.52 meters

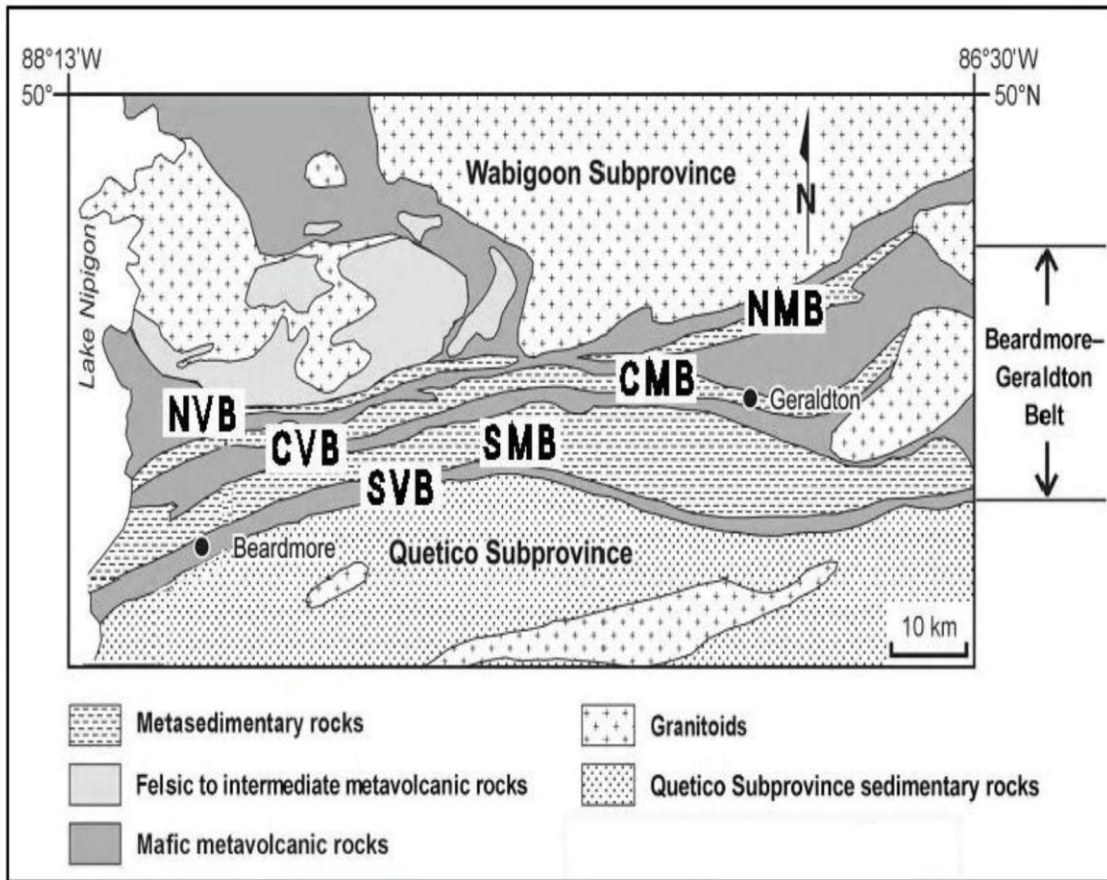
## 6.0 GEOLOGICAL SETTING AND MINERALIZATION

### 6.1 Regional Geology

The supracrustal rocks underlying the WG Property are characteristic of the southfacing northern volcanic sub-belt (Figure 4). This part of the sub-belt is dominated by clastic metasediments with underlying iron-rich tholeiitic basalts and hyabysal gabbro sub-volcanic equivalents to the north. There are inter-formational chemical metasedimentary horizons (banded iron formation and cherty exhalative) within the clastic metasediments and mafic metavolcanics. Due to the lack of outcrop, it is difficult to ascertain the dominance of clastic metasediments and mafic metavolcanics. Clastic metasediments are generally thickly bedded to finely laminated greywacke with arkose and argillite with banded iron formation (BIF). A reworked fragmental unit has been identified from Prodigy Gold Inc drilling and generally lies at the contact between the clastic metasediments to the south and mafic metavolcanics to the north. Clastic metasediments also occur as inter-formational units within the mafic metavolcanics. Although the oxide facies BIF are dominant, lean silicate, carbonate, and sulphide facies iron formation occur. Basaltic rocks are generally extrusive in nature forming massive flows, with local pillows and amygdaloidal features. Mix of clastic and chemical metasediments and volcanoclastics occur as thin inter-formational horizons. There are quartz (QP) to quartz-feldspar porphyry (QFP) sill and dyke-like bodies, but the extent is not truly known. The rocks underlying the property have undergone regional lower greenschist metamorphism.

The WG Property is situated on the Portage Shear, which trends in an east-west direction for approximately 30 km. The Little Long Lac Mine (920,745 tons milled @ 0.34 opt Au for 605,499 oz of gold) is located on the intersection of the Portage Shear and the Little Long Lac Fault. Pye (1951) has described the Portage Shear as a strong zone of shear within brecciated mafic metavolcanics and clastic and chemical metasediments that is over 152 meters (500 ft) wide that has been traced over a strike length of 1829 meters (6000 ft). These structural features have been recognized on the WG Property in the mafic metavolcanics, clastic/chemical metasediments, and QP/QFP bodies.

Figure 3: Regional Geology after Roach 2011



**Table 3: Historic Gold Production in the Beardmore-Geraldton Belt summarized by  
Roach 2011**

<i>Mine</i>	<i>Production (yrs)</i>	<i>Ore Milled (tons)</i>	<i>Gold Produced (oz)</i>	<i>Average Grade (oz/t)</i>	<i>Silver Produced (oz)</i>
Bankfield	10	231,009	66,417	0.29	7,590
Brengold	2	46	134	2.91	
Crooked Green Creek	5	1,455	471		
Hard Rock	14	1,458,375	269,081	0.18	9,009
Jellicoe	3	10,620	4,238	0.4	145
Leitch	33	920,745	847,690	0.92	31,802
Little Long Lac	22	1,780,516	605,499	0.34	52,750
MacLeod-Cockshutt	31	10,337,229	1,475,728	0.14	101,388
Magnet Consolidated	13	359,912	152,089	0.42	16,879
Maloney Sturgeon	1	1	73	73	16
Maylac	2	1,518	792	0.52	46
Mosher-Long Lac	5	2,710,657	330,265	0.12	34,604
Northern Empire	9	425,866	149,493	0.35	19,803
Orphan (Dik-Dik)	2	3,525	2,460	0.70	1,558
Sand River	6	157,870	50,065	0.32	3,628
Sturgeon River	7	141,123	73,438	0.51	5,922
Talmora-Long Lac	2	6,634	1,417	0.21	36
Tashota-Nipigon	12	51,200	12,356	0.24	14,527
Theresa	6	26,120	4,785	0.18	202
Tombill	6	190,622	69,120	0.36	8,595

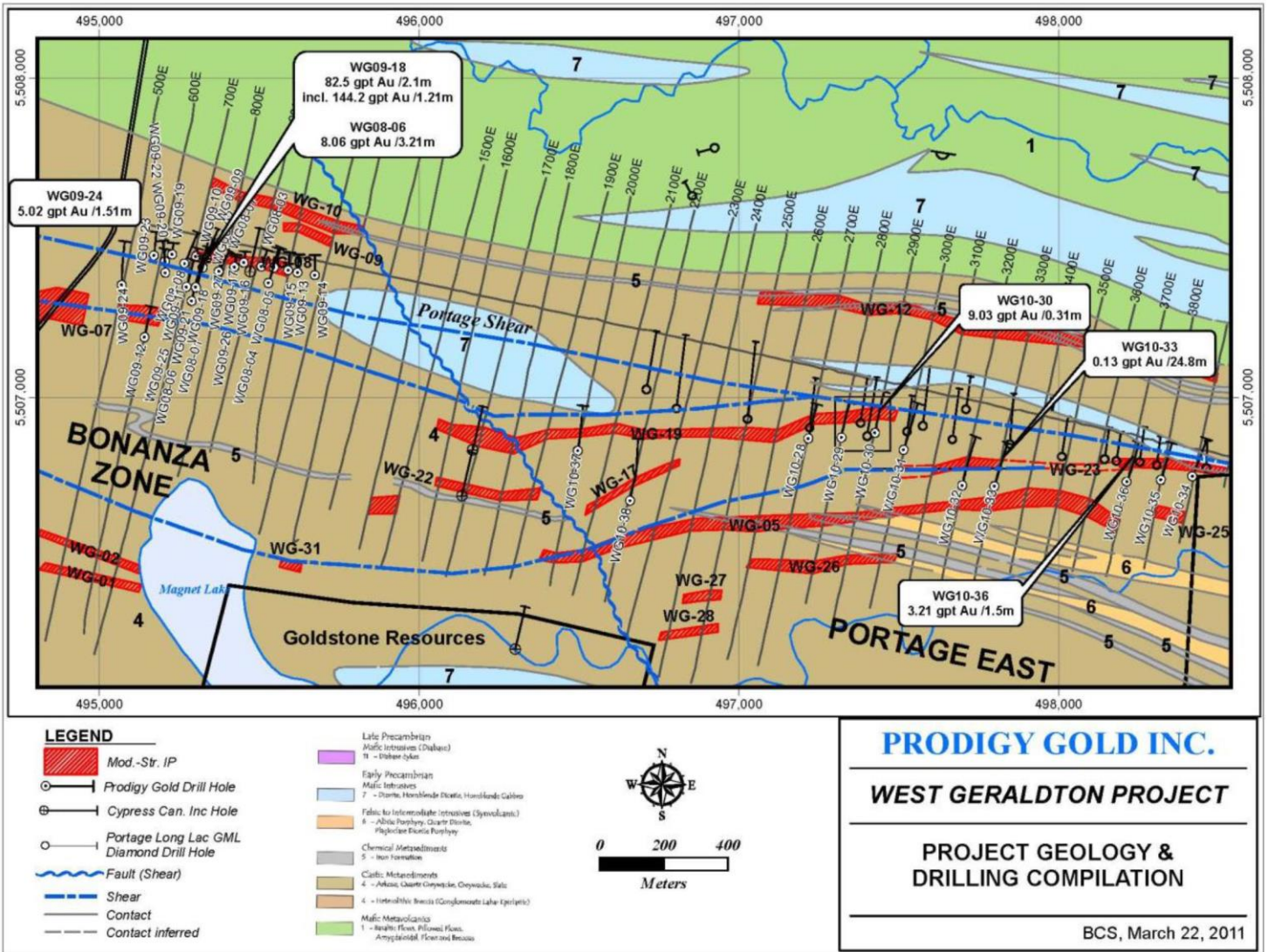


## 6.2 Property Geology

The supracrustal rocks underlying the WG Property are characteristic of the southfacing northern volcanic sub-belt (Figure 4). This part of the sub-belt is dominated by clastic metasediments with underlying iron-rich tholeiitic basalts and hyabysal gabbro sub-volcanic equivalents to the north. There are inter-formational chemical metasedimentary horizons (banded iron formation and cherty exhalative) within the clastic metasediments and mafic metavolcanics. Due to the lack of outcrop, it is difficult to ascertain the dominance of clastic metasediments and mafic metavolcanics. Clastic metasediments are generally thickly bedded to finely laminated greywacke with arkose and argillite with banded iron formation (BIF). A reworked fragmental unit has been identified from Prodigy Gold Inc drilling and generally lies at the contact between the clastic metasediments to the south and mafic metavolcanics to the north. Clastic metasediments also occur as inter-formational units within the mafic metavolcanics. Although the oxide facies BIF are dominant, lean silicate, carbonate, and sulphide facies iron formation occur. Basaltic rocks are generally extrusive in nature forming massive flows, with local pillows and amygdaloidal features. Mix of clastic and chemical metasediments and volcanoclastics occur as thin inter-formational horizons. There are quartz (QP) to quartz-feldspar porphyry (QFP) sill and dyke-like bodies, but the extent is not truly known. The rocks underlying the property have undergone regional lower greenschist metamorphism.

The WG Property is situated on the Portage Shear, which trends in an east-west direction for approximately 30 km. The Little Long Lac Mine (920,745 tons milled @ 0.34 opt Au for 605,499 oz of gold) is located on the intersection of the Portage Shear and the Little Long Lac Fault. Pye (1951) has described the Portage Shear as a strong zone of shear within brecciated mafic metavolcanics and clastic and chemical metasediments that is over 152 meters (500 ft) wide that has been traced over a strike length of 1829 meters (6000 ft). These structural features have been recognized on the WG Property in the mafic metavolcanics, clastic/chemical metasediments, and QP/QFP bodies.

Figure 4: Local Geology after Roach 2011



## 7.0 EXPLORATION WORK

The claim holders spent 1 day gaining access to the project, flagging lines, and establishing the base line. The area has been recently logged and the road was plowed by the timber company. This provided excellent access conditions. No exploration permit was required for the survey. Mike Goodman used a Geonics EM16 VLF handheld unit (serial# 3353) using Cutler, Maine, U.S.A @ 24.0 kHz. Flagged line spacing was 100m and stations were every 25m on the line. The survey was strategically designed to maximize the perpendicularity of the instrument to the predicted axis of unconformity. A total of 5400m were surveyed and flagged. A detailed data review and map of the line data is listed in Appendix D and final map in Figure 5.



Figure 5: VLF Survey Grid

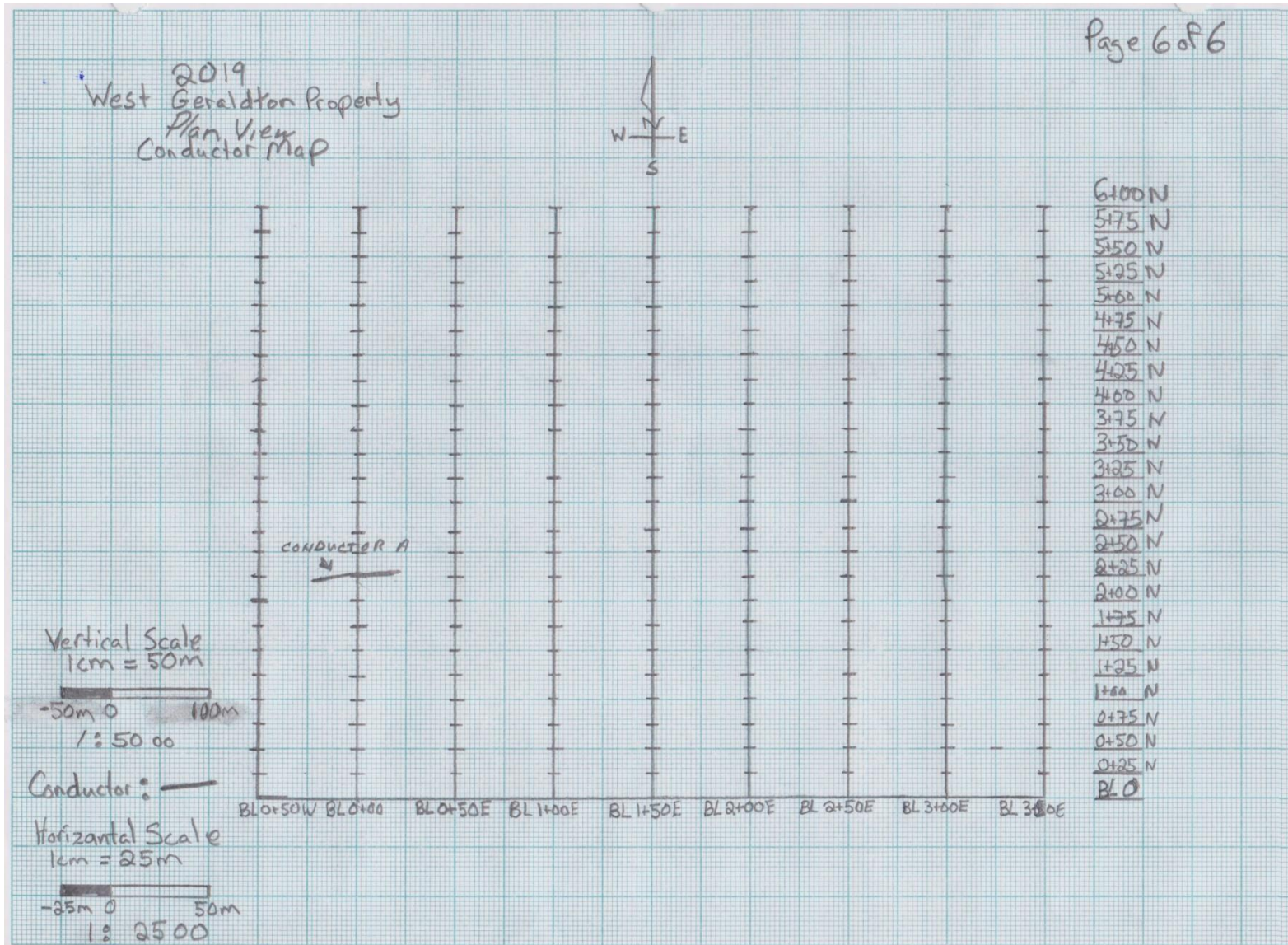


Figure 6a: VLF Final Map Overview

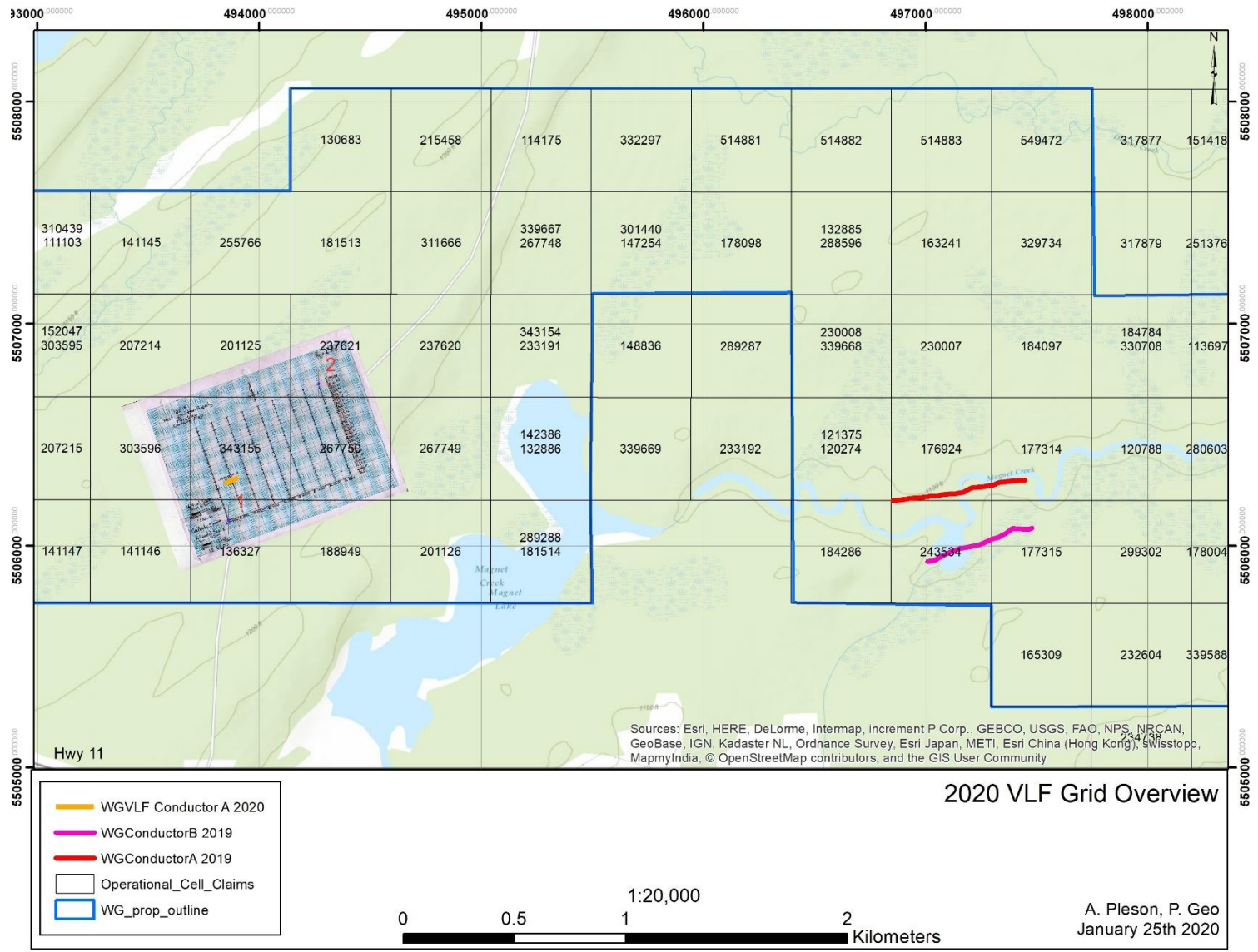
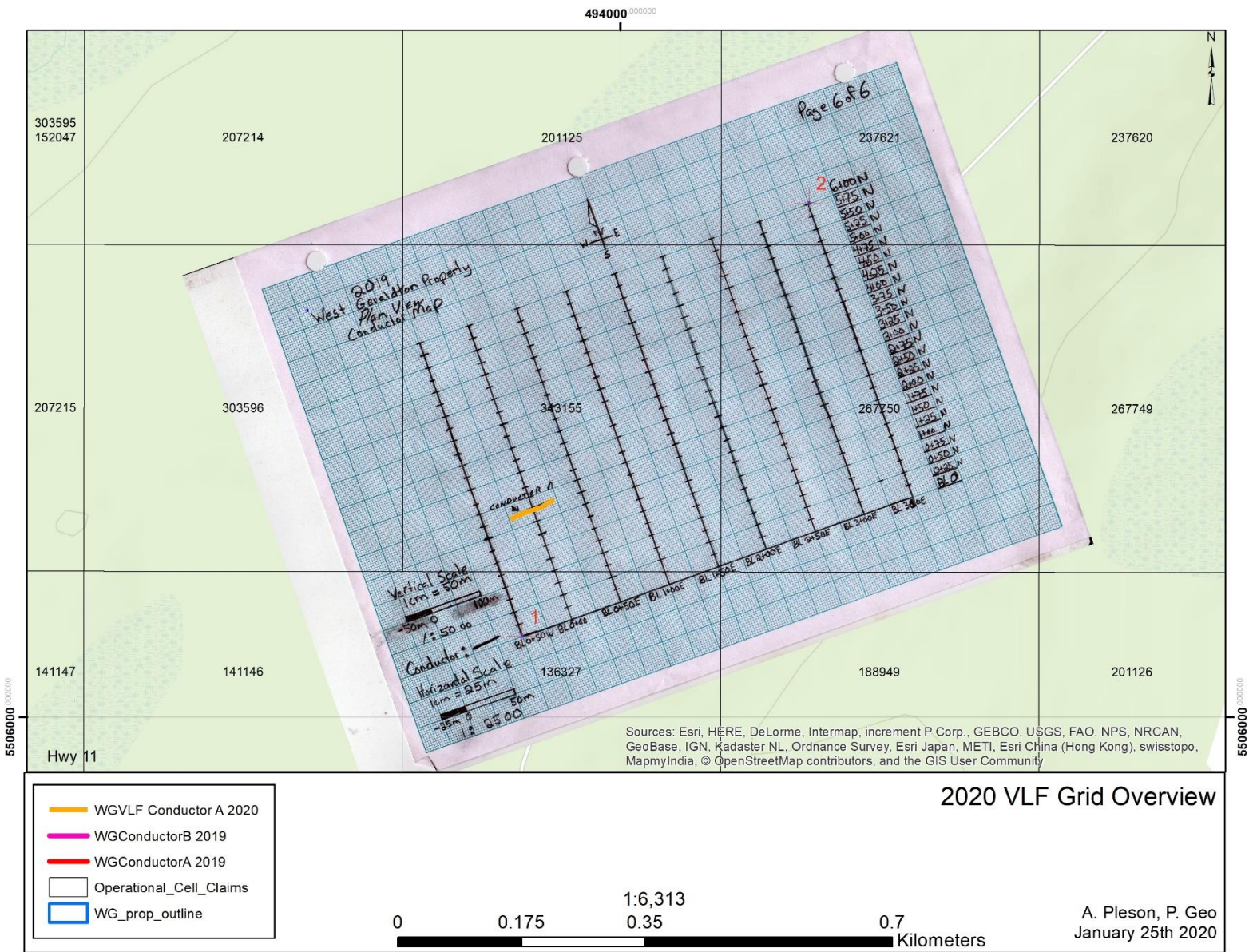




Figure 6b: VLF Final Map Detailed



## 8.0 EXPLORATION RESULTS AND RECOMMENDATIONS

The VLF survey performed by Phil Houghton and Mike Goodman has identified one small conductor which warrants further work. Overall, the author recommends the following actions be taken to advance the project:

- Apply for exploration permit(s) for follow up work
- Prospect for outcrops near or along strike of the identified conductors
- Continue with infill VLF surveys along trend towards conductors identified in the spring 2019 VLF survey
- Perform VLF survey near historic showings both to the east and west of the current project location
- Soil sampling (SGH or MMI) as outcrop is very minimal in this area based on historic work
- Data compilation of historic work, especially the data from Kodiak Exploration's 2009 drilling campaign

## **9.0 REFERENCES**

Roach, S., 2011, 2009 Drilling Report, Kodiak Exploration Ltd., Assessment File# 20000007678



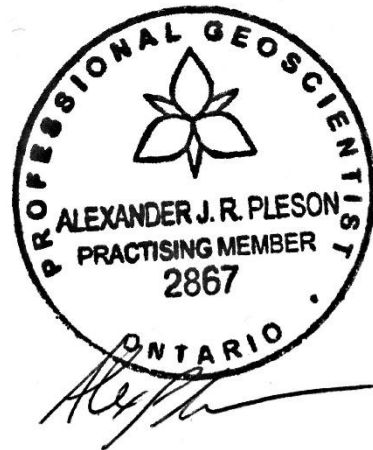
## 10.0 CERTIFICATE OF AUTHOR

I, Alexander Pleson, P.Geo., as an author of this report regarding the exploration project in the Thunder Bay Mining District, Northwestern Ontario, Canada; do hereby certify that:

1. I am a consulting geologist at Pleson Geoscience of Nipigon, ON, CA P0T 2J0
2. I have B.Sc. degree in Geology from Lakehead University.
3. I am registered as a Professional Geologist in Ontario (License #: 2867).
4. I have been practicing as a professional since 2017, and have 10 years of experience in mineral exploration.
5. The exploration work was carried out under my supervision and I was on site through the duration of the project.
6. I retain 50% ownership in the project

Dated: Feb 4th, 2020

Signed and Sealed:



**APPENDIX A**  
**LIST OF PERSONNEL WORKED ON EXPLORATION WORK**

## **List of Personnel / Contractors Involved on the Project**

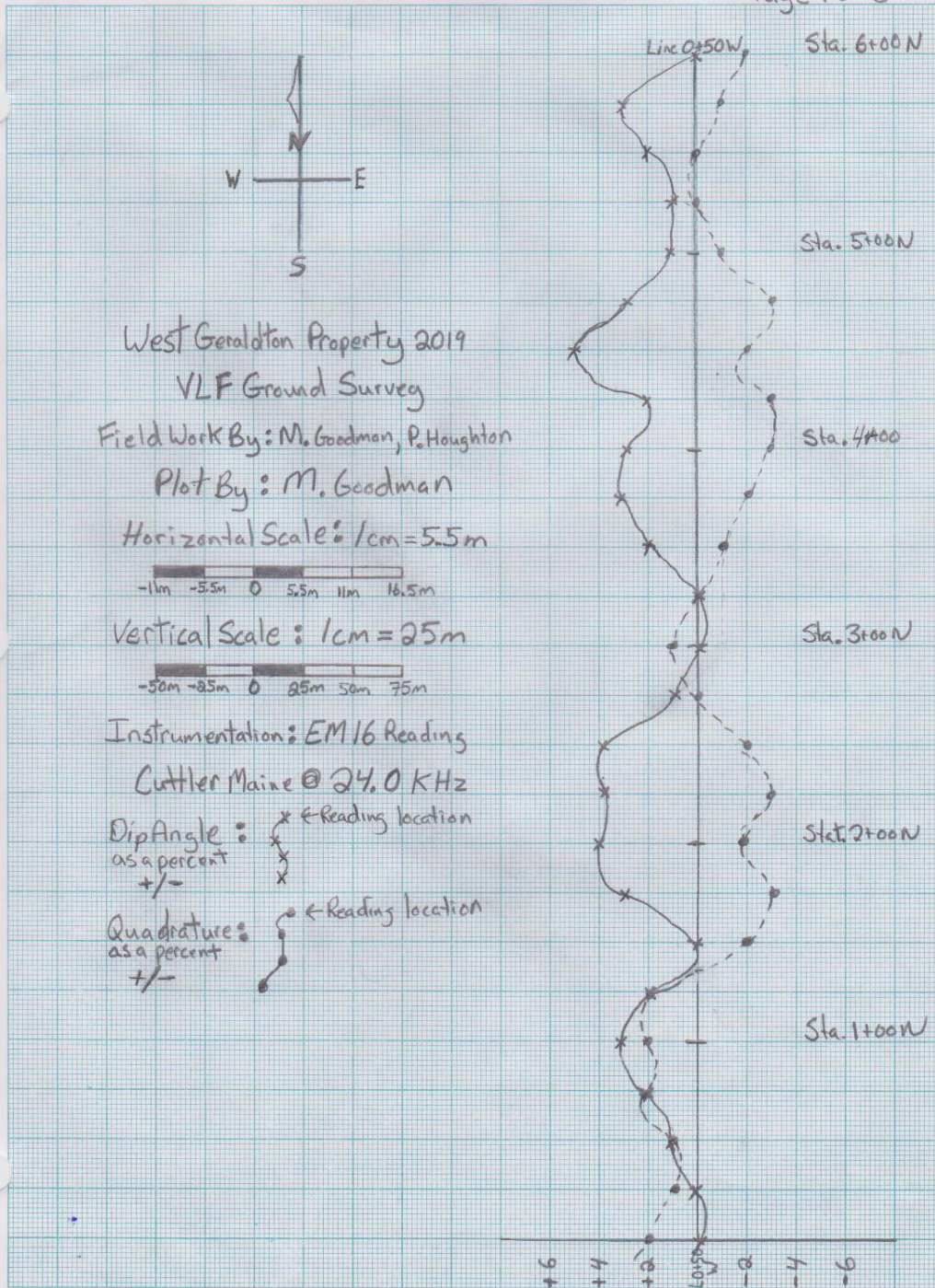
- 1. Alexander Pleson, P.Geo., - Geologist of Nipigon, ON (Claim Holder)**
- 2. Mike Goodman – Prospector of Beardmore, Ontario (Claim Holder)**
- 3. Phil Houghton – Geophysicist of Beardmore, Ontario (Contractor)**

**APPENDIX B**  
**STATEMENT OF EXPENDITURES**

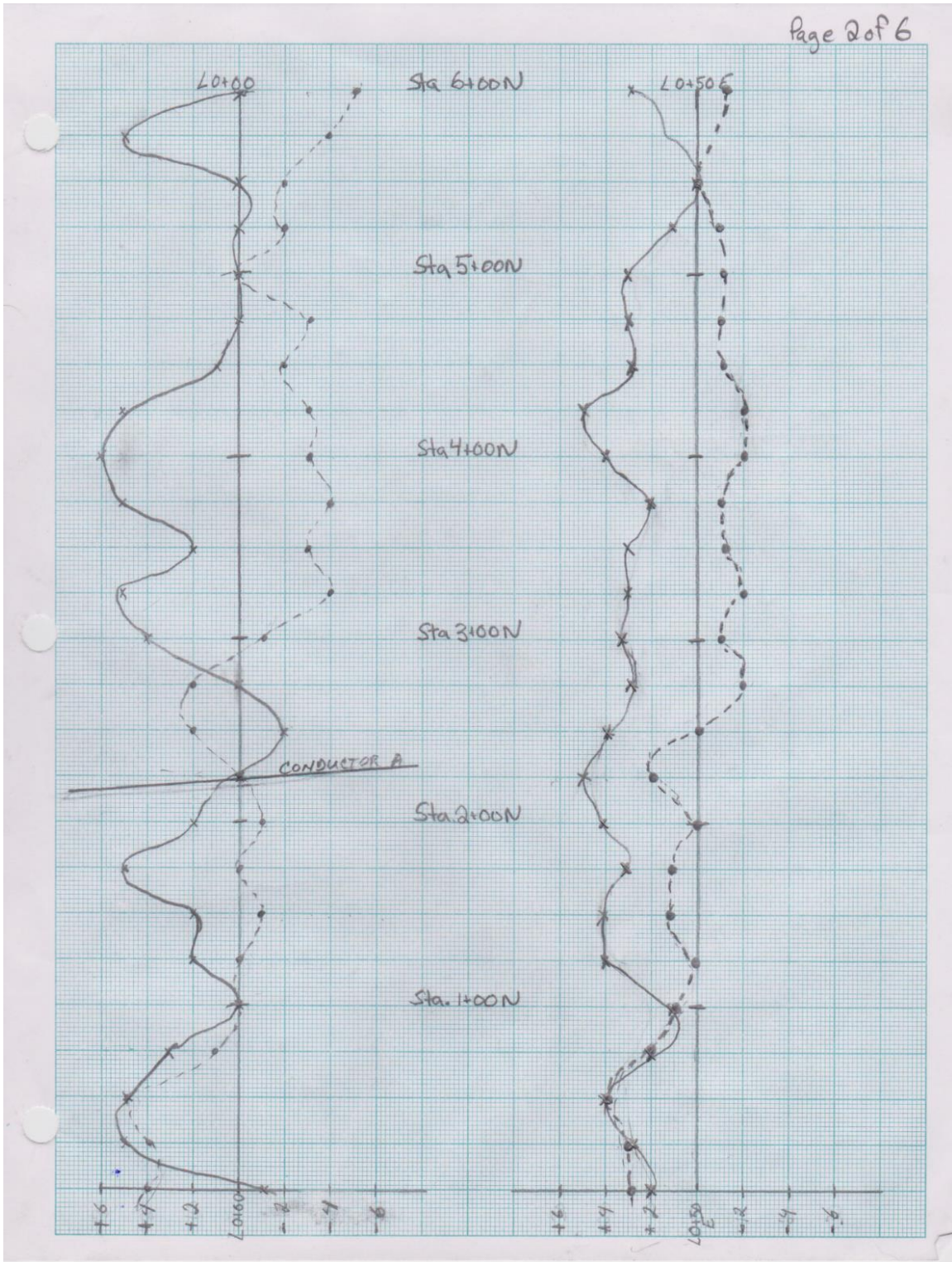
Date	Personnel	Task
2019-11-21	Alex Pleson, Mike Goodman	flag and establish baseline. GPS start and end of lines.
2019-11-22	Alex Pleson, Phil Houghton, Mike Goodman	Start survey on western side of grid, from road. Easy access. 1 skidoo used to pack trail across new cuts, ~25% of survey was on new forestry cut
2019-11-23	Phil Houghton, Mike Goodman	Finish eastern portion of survey

## **APPENDIX C**

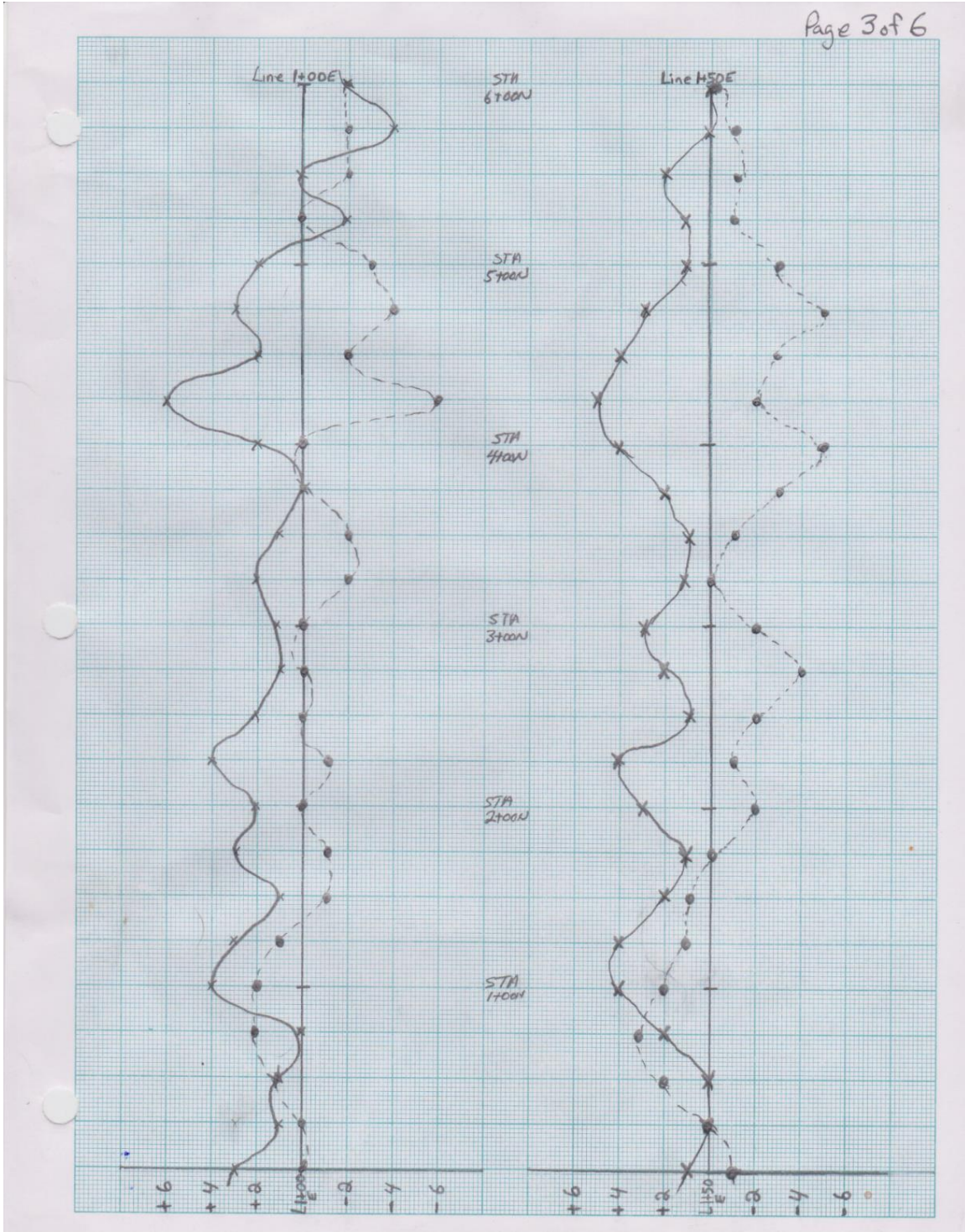
### **VLf Report**



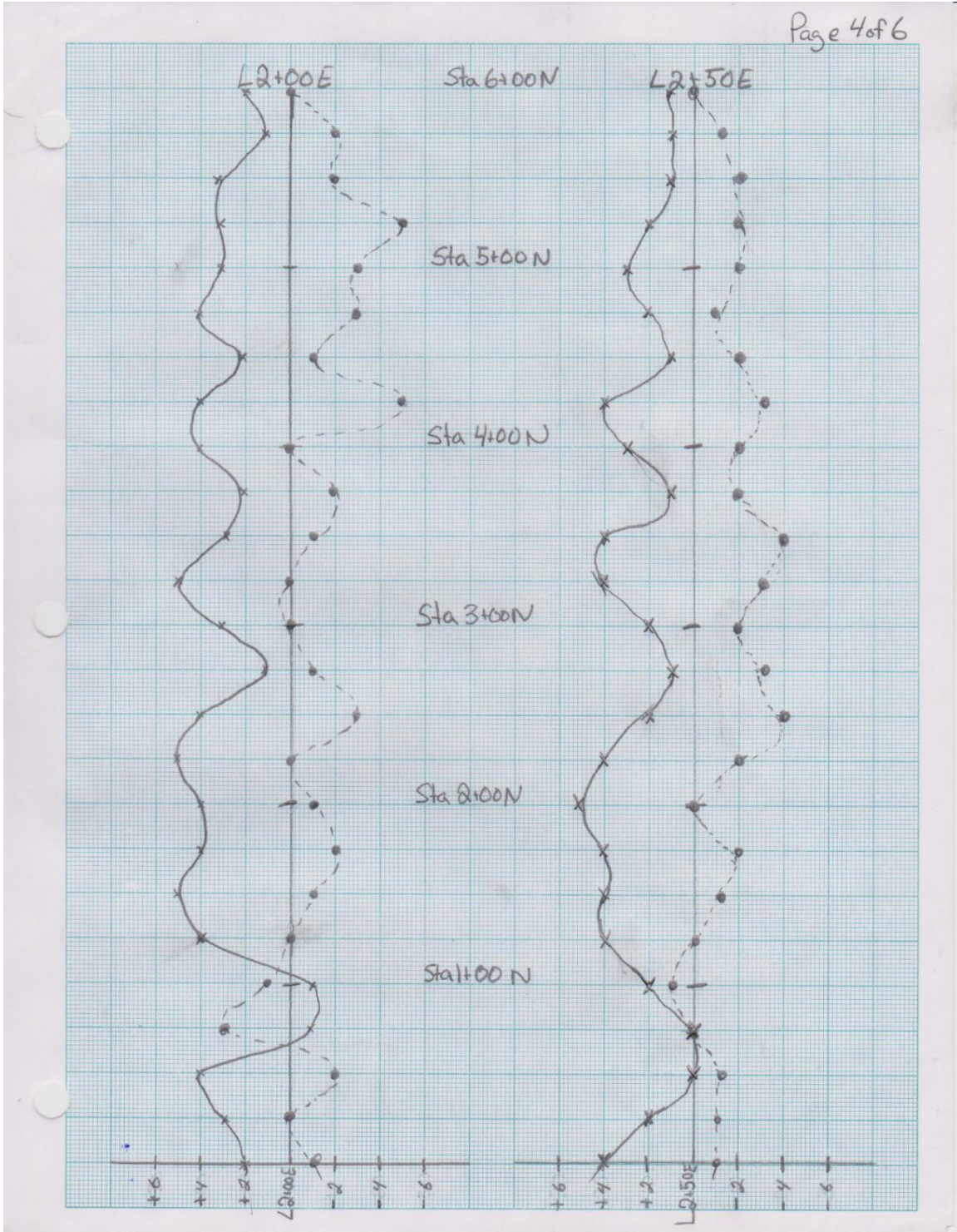






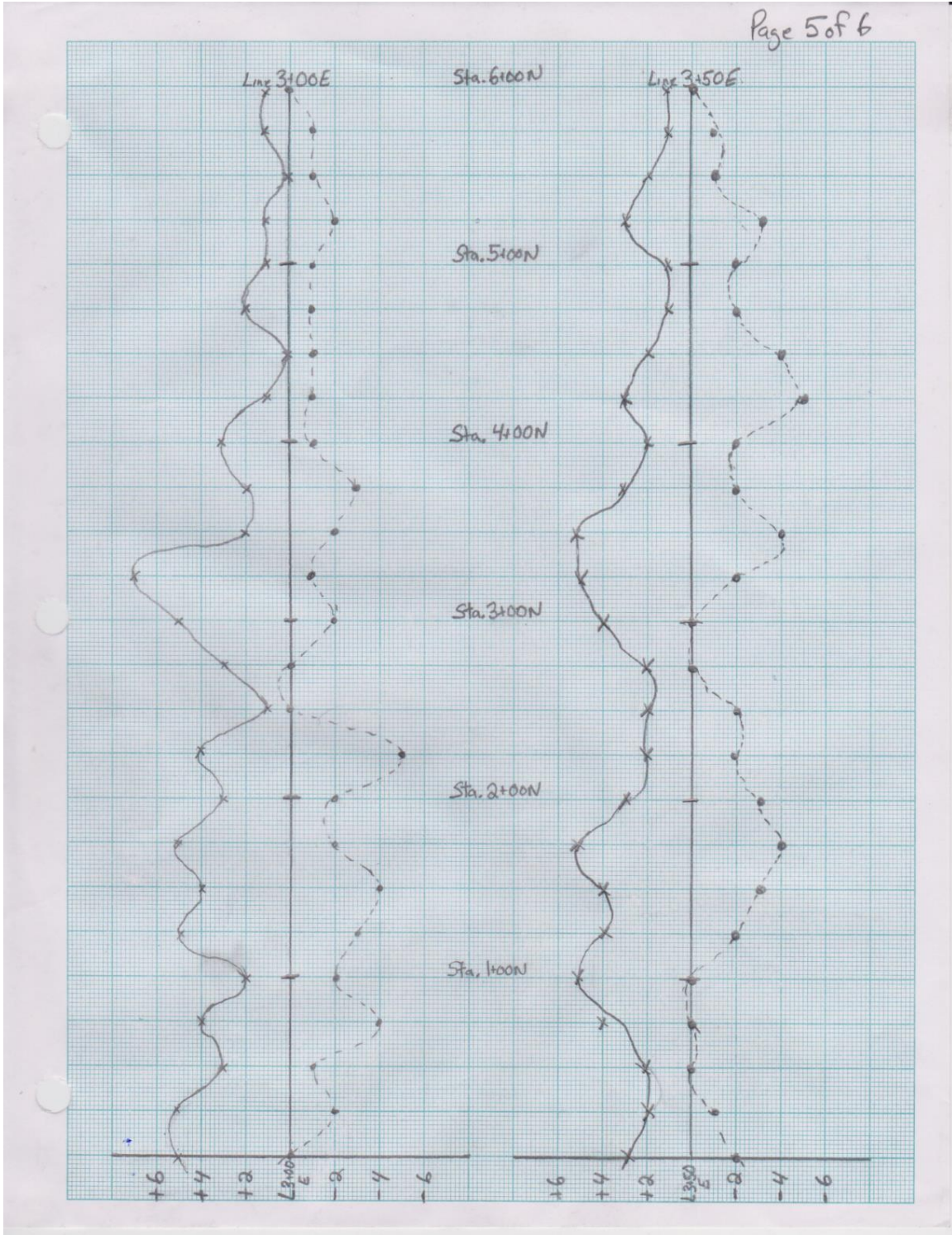


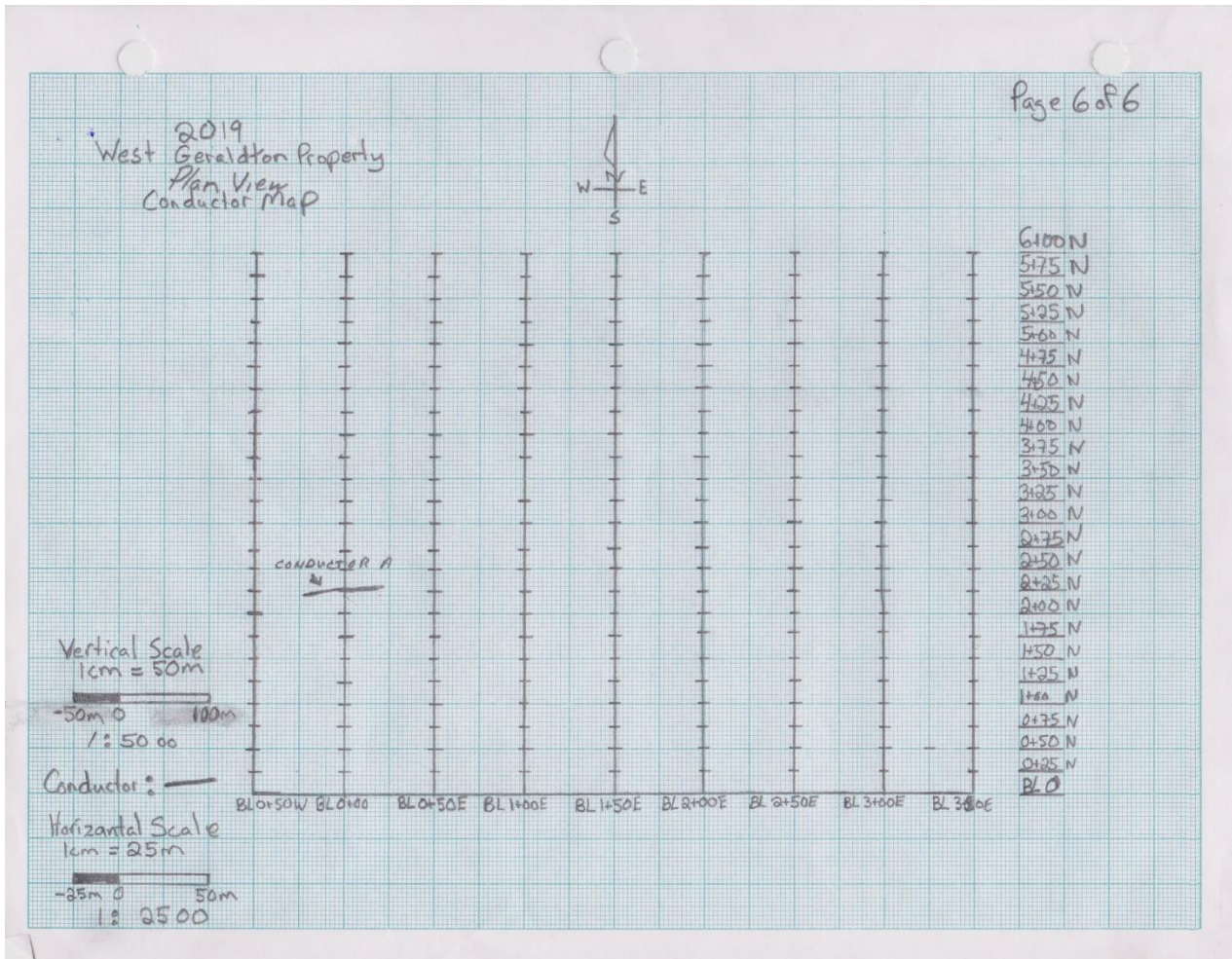






Page 5 of 6







### UTM'S OF GRID LINES START/END

Station	Easting	Northing
BL 0+50W/0+00	5506115	0493861
0+50W/6+00N	5506720	0493859
BL 0+00/0+00	5506123	0493913
0+00/6+00N	5506723	0493908
BL 0+50E/0+00	5506119	0493964
0+50E/6+00N	5506726	0493958
BL 1+00E/0+00	5506121	0494012
1+00E/6+00N	5506719	0494001
BL 1+50E/0+00	5506121	0494049
1+50E/6+00N	5506723	0494057
BL 2+00E/0+00	5506110	0494114
2+00E/6+00N	5506719	0494114
BL 2+50E/0+00	5506120	0494165
2+50E/6+00N	5506723	0494164
BL 3+00E/0+00	5506122	0494216
3+00E/6+00N	5506726	0494211
BL 3+50E/0+00	5506121	0494264
3+50E/6+00N	5506729	0494267

164 NAD 83

**APPENDIX D**  
**Instrument Specifications**

## EM16/16R Specifications

<b>MEASURED QUANTITIES</b>	EM16: In-phase and Quadrature components of the secondary VLF field, as percentages of the primary field EM16R: Apparent resistivity in ohm-metres, and phase angle between $E_x$ and $H_y$
<b>PRIMARY FIELD SOURCE</b>	VLF broadcast stations
<b>SENSOR</b>	EM16: Ferrite-core coil EM16R: Stainless-steel electrodes, separated by 10 m; sensor impedance is 100 M $\Omega$ in parallel with 0.5 pf
<b>OPERATING FREQUENCY</b>	15 to 28 kHz, depending on VLF broadcasting station
<b>MEASUREMENT RANGES</b>	EM16: In-phase: $\pm 150$ %: Quadrature: $\pm 40$ % EM16R: 300, 3000, 30000 $\Omega$ -m, Phase: 0-90°
<b>POWER SOURCE</b>	EM16 or EM16/16R: 9 V battery
<b>OPERATING TEMPERATURE</b>	-30° C to +50° C
<b>DIMENSIONS</b>	EM16 or EM16/16R: 53 x 30 x 22 cm
<b>WEIGHT</b>	EM16: Instrument: 1.8 kg; Shipping: 6.2 kg EM16R: Instrument: 1.5 kg; Shipping: 6 kg