

We are committed to providing [accessible customer service](#).

If you need accessible formats or communications supports, please [contact us](#).

Nous tenons à améliorer [l'accessibilité des services à la clientèle](#).

Si vous avez besoin de formats accessibles ou d'aide à la communication, veuillez [nous contacter](#).

Assessment Report on the 2019 Prospecting Program
on our Grenfell Township Property



Prepared by:

M. Scott Woolhead

Woolhead Contract Exploration Services

305 Corporation Street,

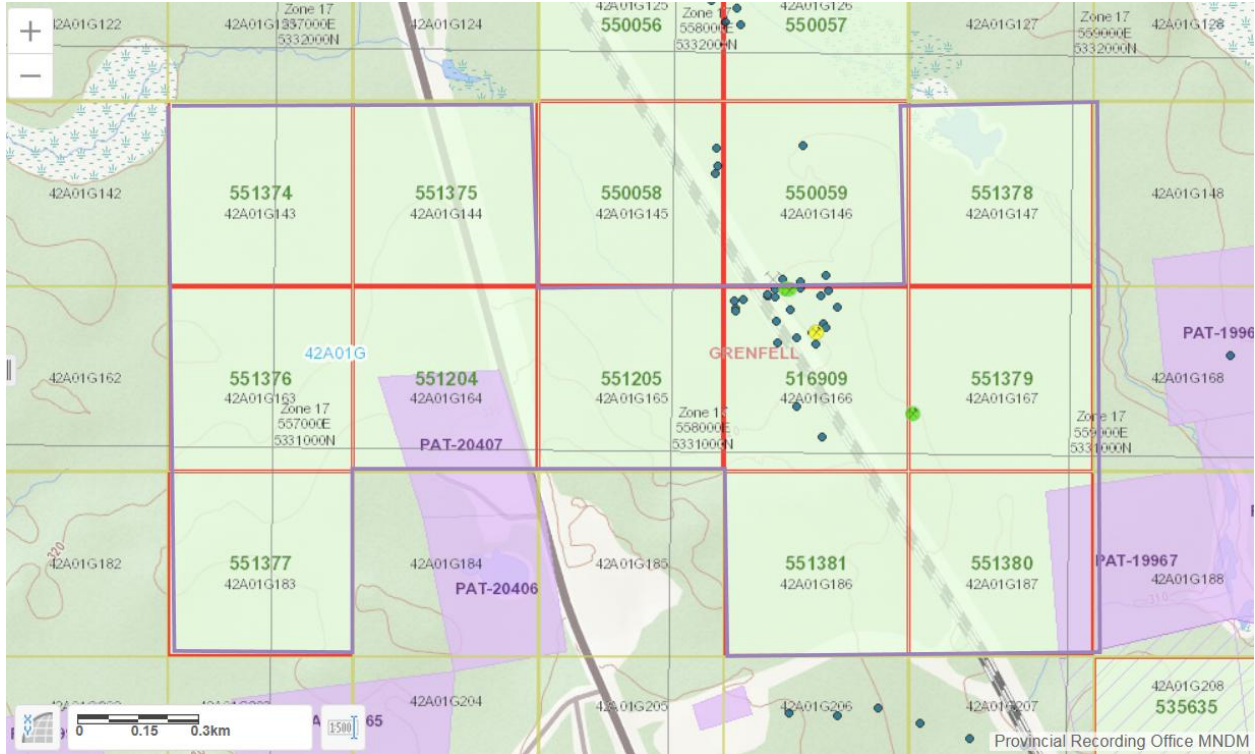
Porcupine, Ontario

P0N1C0

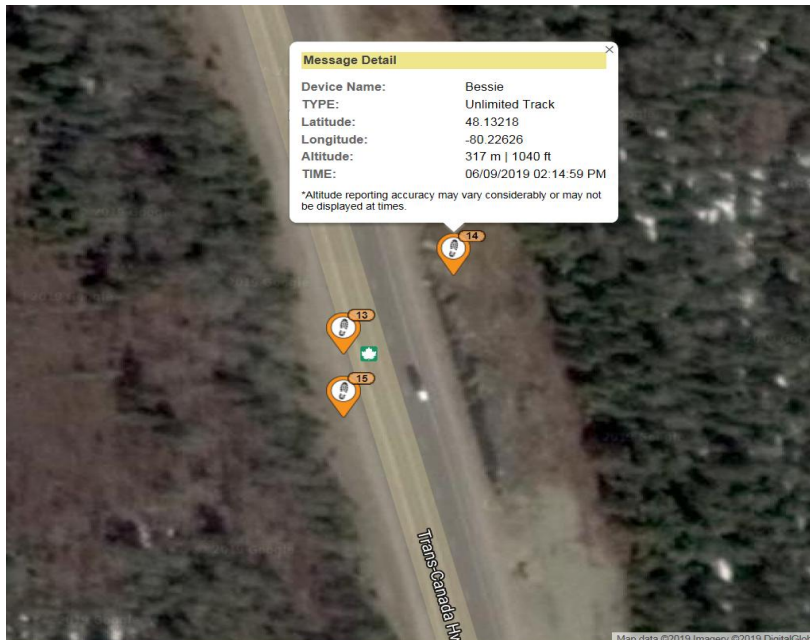
Revised June 2nd, 2020.

Grenfell Prospect: Claims #'s 516909, 551204-551205, 551374-551381

This property was originally staked as a one unit claim -- #516909 -- in April of 2018 due to the existence of a historical shaft and solid assays from prospecting in past decades. When I was present for later work, I extended the claim adding 10 claim units during June of 2019. In total, four trips were made to the property, two by myself and two with a helper. This represents 6 individual days of work credits. In addition another day was involved in writing up the necessary report; for a total of 7 days of credits.



Prospecting on June 9th, 2019.





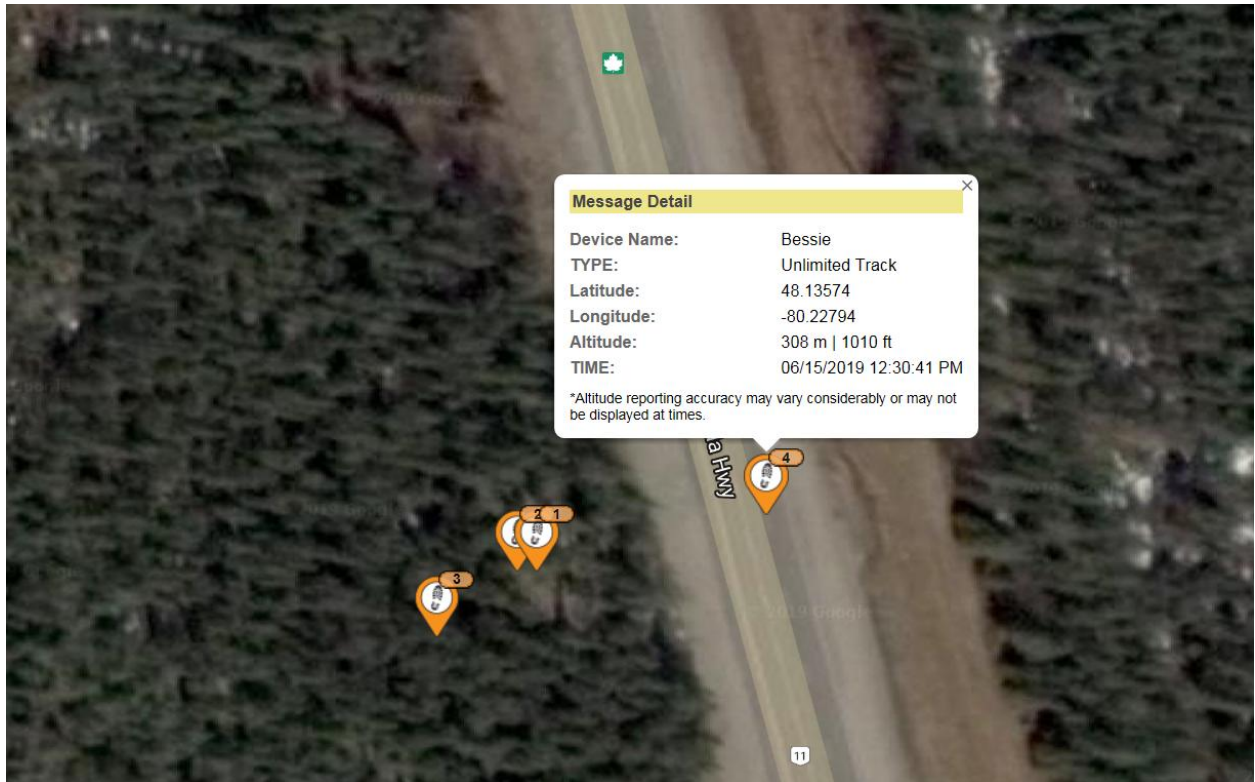






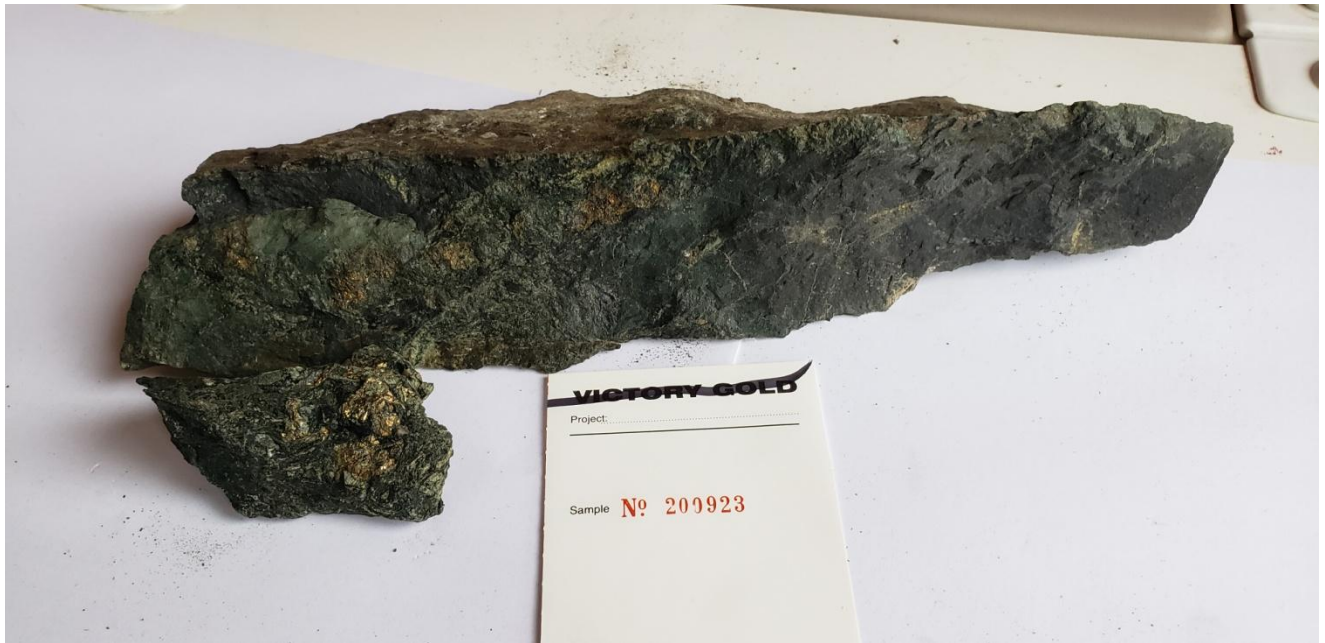


Prospecting on June 15th, 2019.





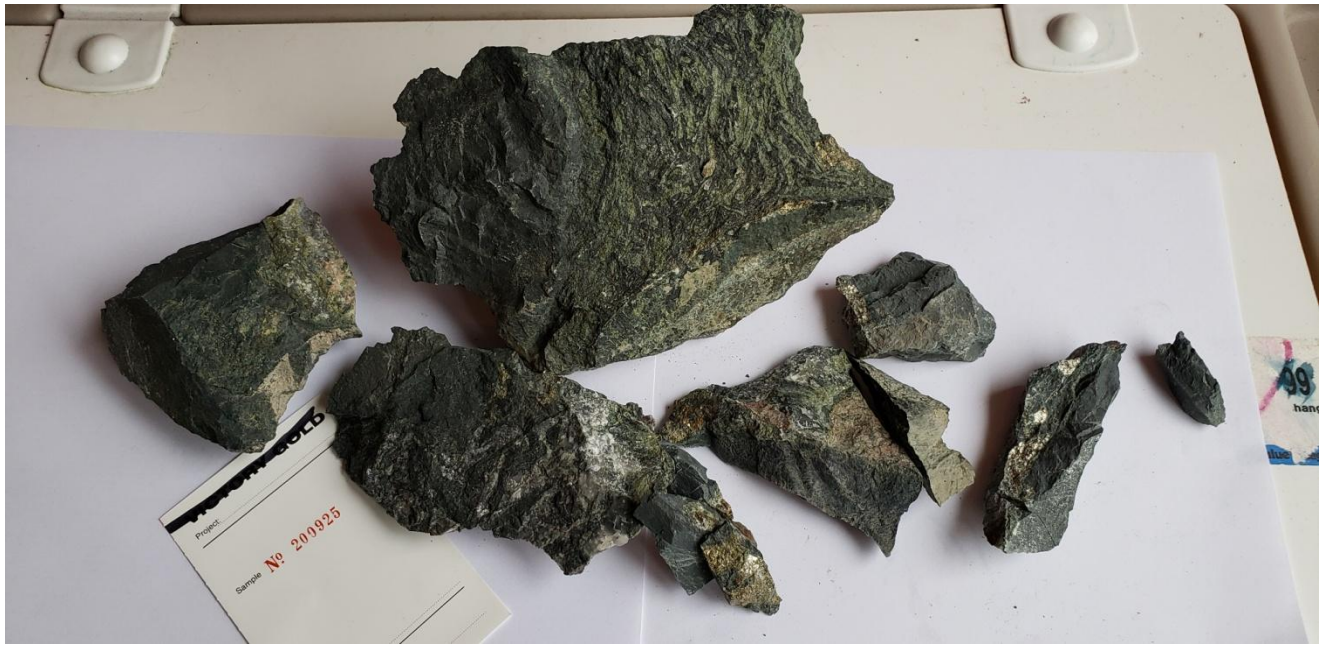
Sample # 1 (tag # 200922) GPS 17, 557566, 5331277 (top of outcrop)



Sample # 2 (200923) GPS 17, 557566, 5331277 (2nd sample from top of outcrop)



Sample # 3 (200924) GPS 17, 557566, 5331256



Sample # 4 (200925) GPS 17, 557573, 5331234



Sample # 5 (200929) GPS 17, 557573, 5331256



Sample # 6 GPS 17, 557566, 5331277 from bottom of outcrop.



Sample # 7 GPS 17, 557421, 5331673



Sample # 8

GPS 17, 557370, 5331641



Sample #9

GPS 17, 557506, 5331496



Sample # 10

GPS 17, 557499, 5331522



Sample 14 was divided into two tests – 200938 and 200939 based on percentage of mineralization in the rock. Located at GPS 17, 557596, 5331170.



Sample # 11 was taken from the vein system seen here in this photo. Location is at GPS 17, 557643,5330997.



Sample # 12

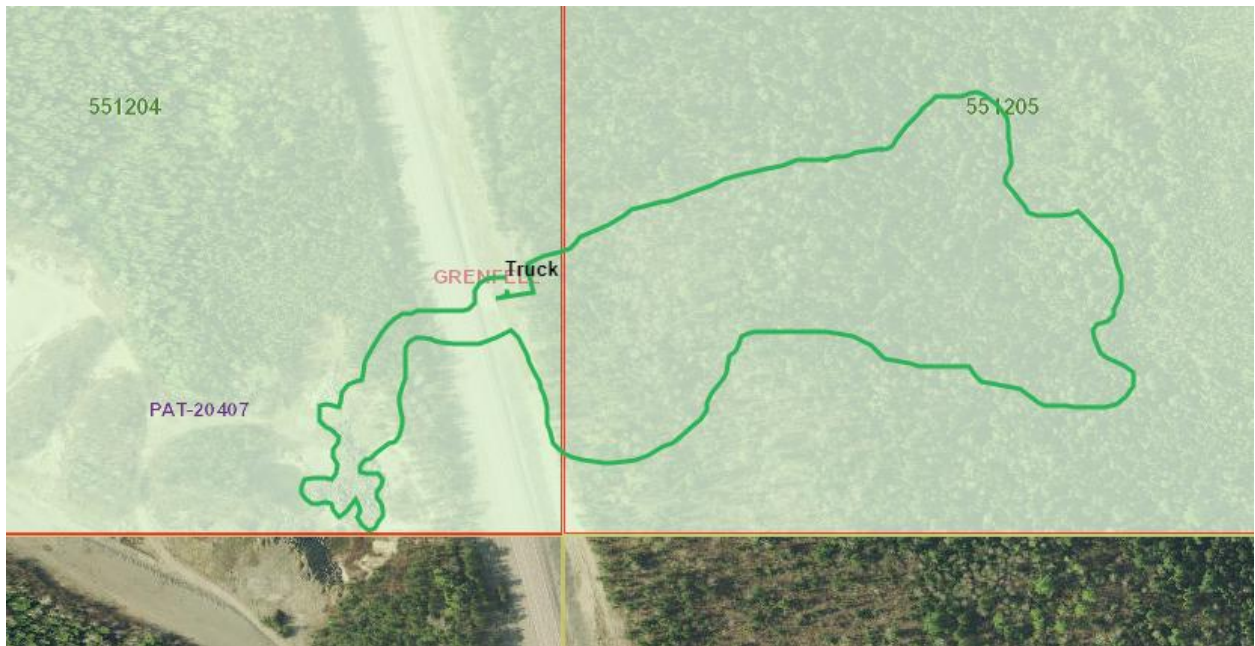
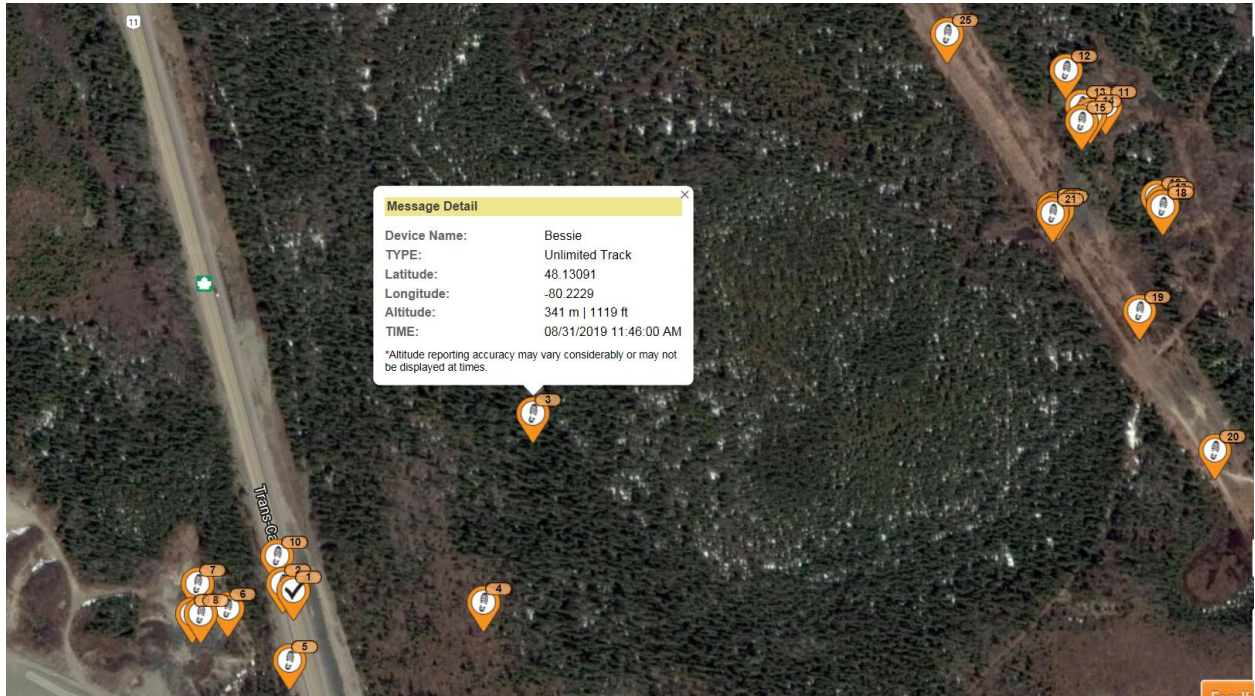
GPS 17, 557596, 5331161



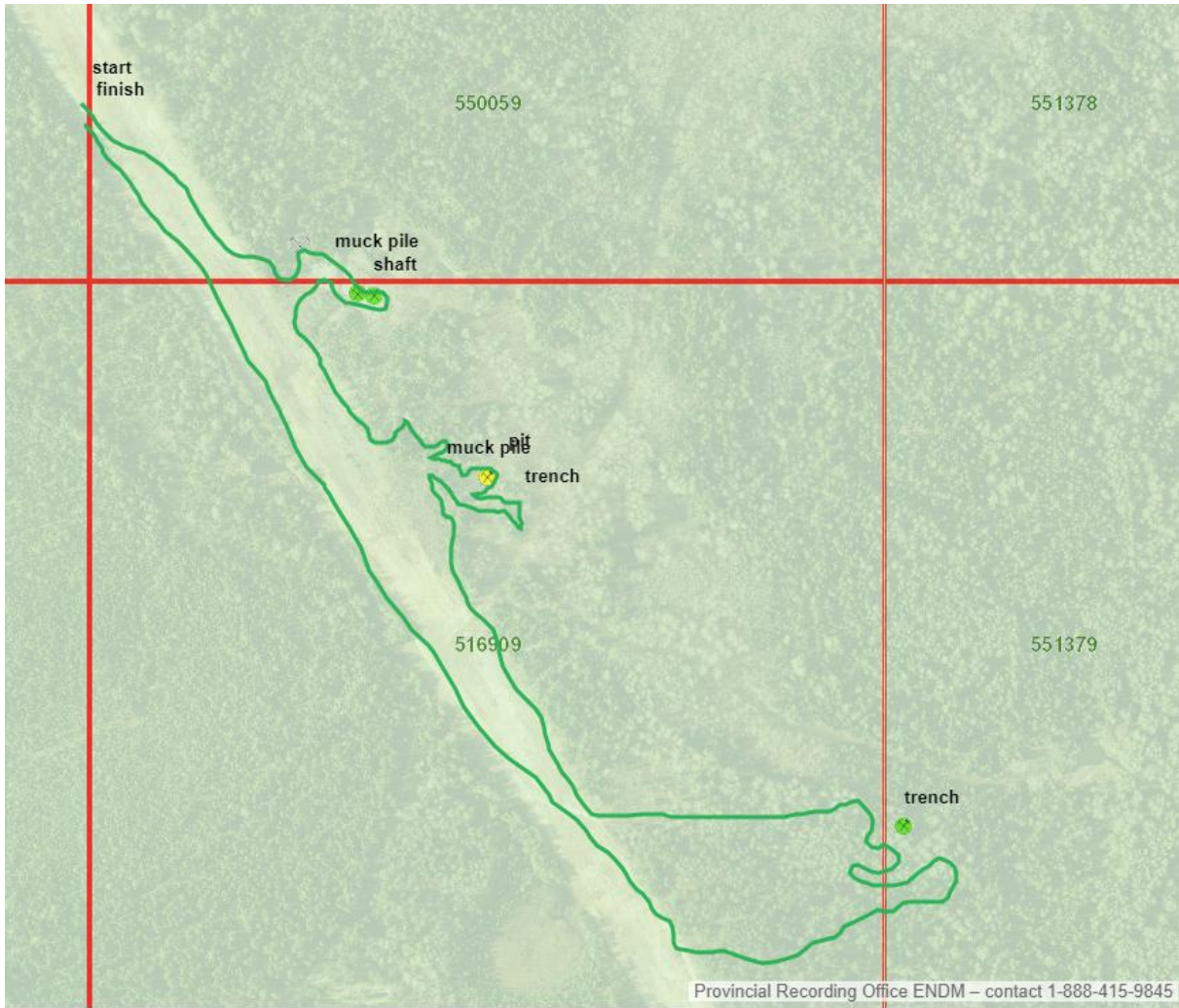
Sample # 13

GPS 17, 557596, 5331164

Prospecting on August 31st, 2019



First trek of the day (map above) looking for and finding outcrops on claim 551205, then surveying the rocks removed from the rock cut along the road. The second prospecting trek for August 31st went into claims 516909 and 551379 (following map).





1st sample of the day; in the end it was not submitted for assay.



Target # 1 for today. Was listed as a shaft. I found this trench (picture above and on next page). It was almost entirely filled in.



A 2nd picture of target #1.



Sample taken en route to secondary target as reference. Not submitted for assay.



Target #3 for today. Shaft capped at 558286, 5331406.





Old trench or pit located directly south (10 m) of the main shaft (previous page and pictures). It measured 5m x 5m and 2 m in depth. As can be seen it was dry at the time of my visit.



15 m high muck pile located at 558273, 5331406, 20 m long x 15 m wide . Samples 2 (east), 3 (south), and 4 (north) were gathered from the muck here. They assayed 3.157, 1.64, and 1.178 g/t Au.



Grab sample 5 gathered from here (see above). # 5 assayed 6.9 g/t Au. Located at GPS 17, 557367, 5331303.

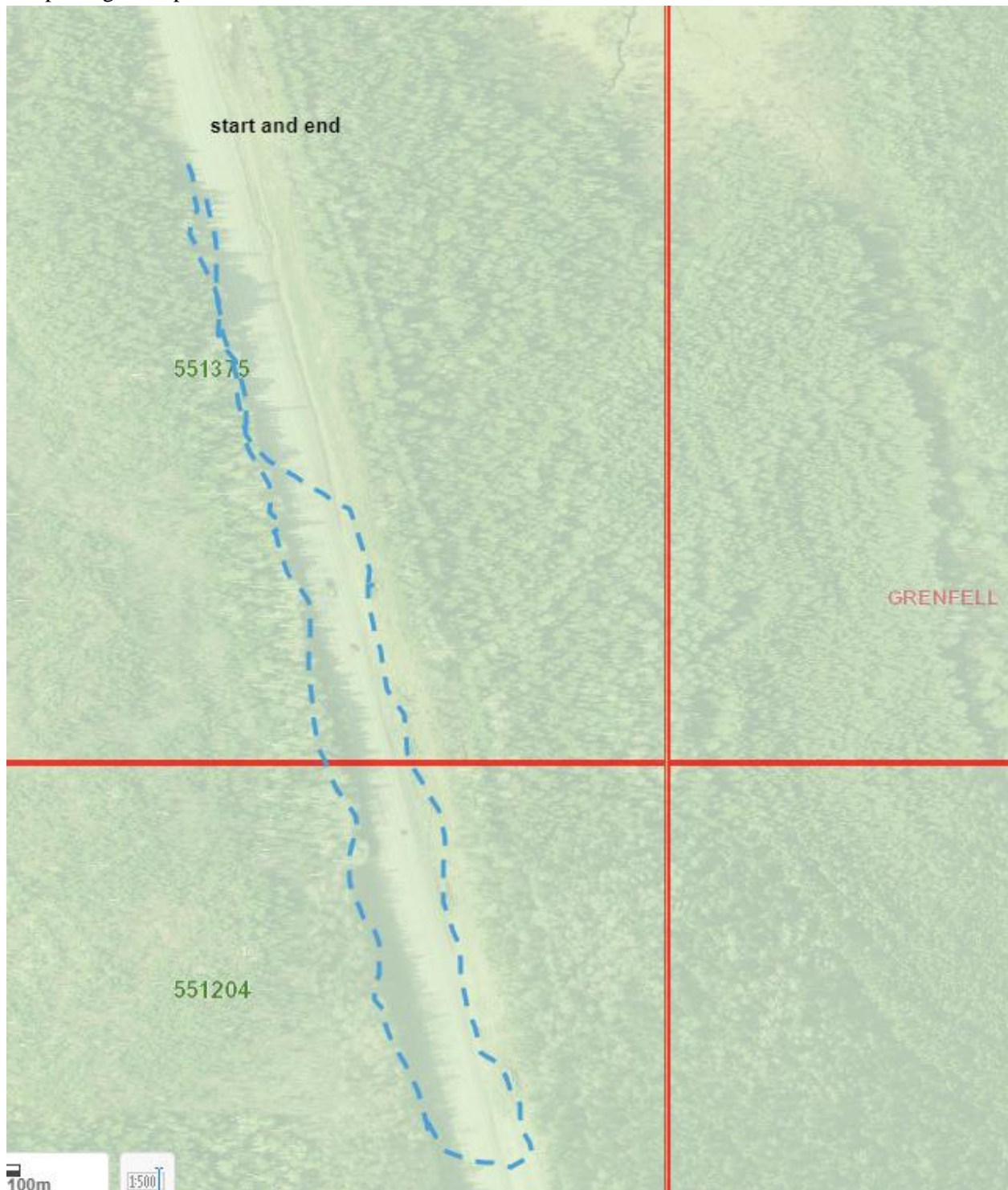


Beaver pond at old pit located 558367, 5331303. Sample #6 was taken from a muck pile beside this beaver pond; assayed 1.275 g/t Au. Sample 6 location was 17, 558360, 5331285.

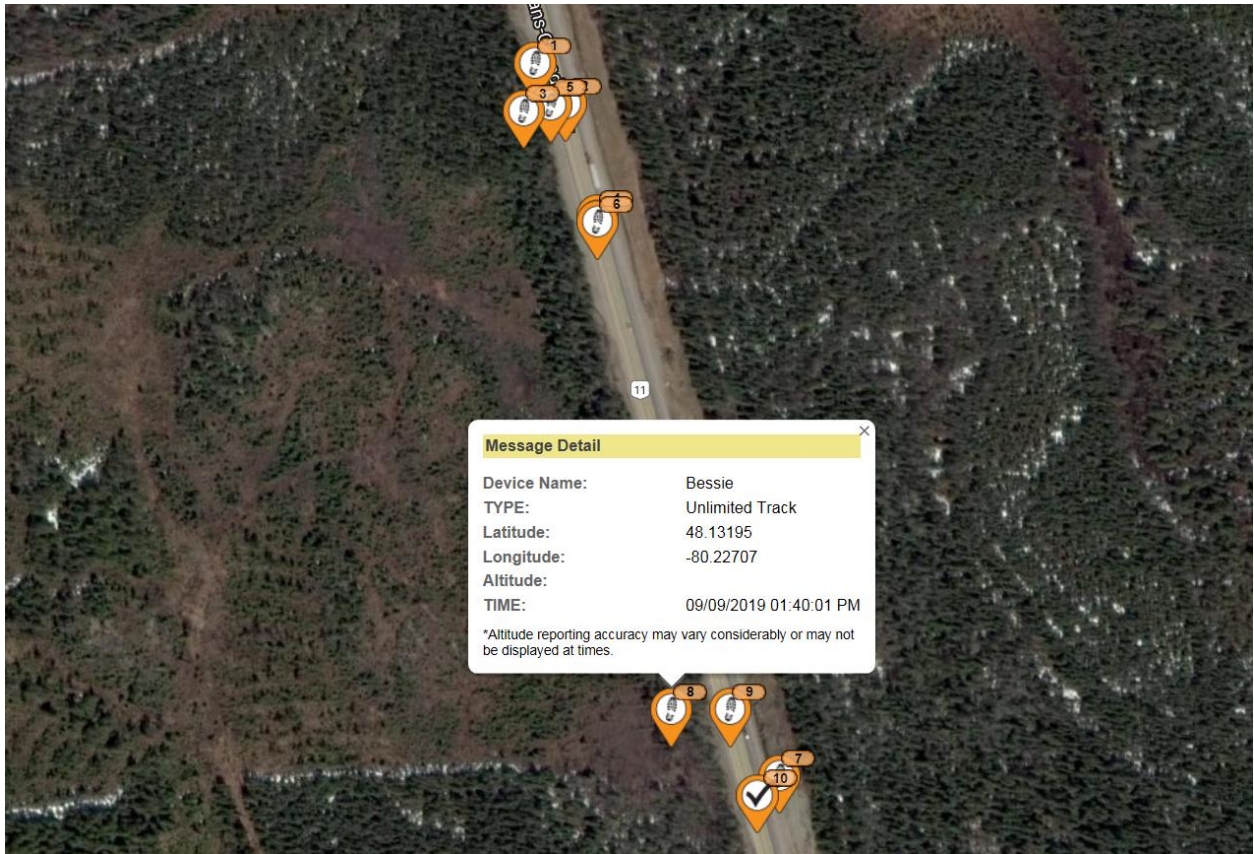


Sample taken from outcrop located at 557803, 5331150. In the end, this sample was also not sent in for assay.

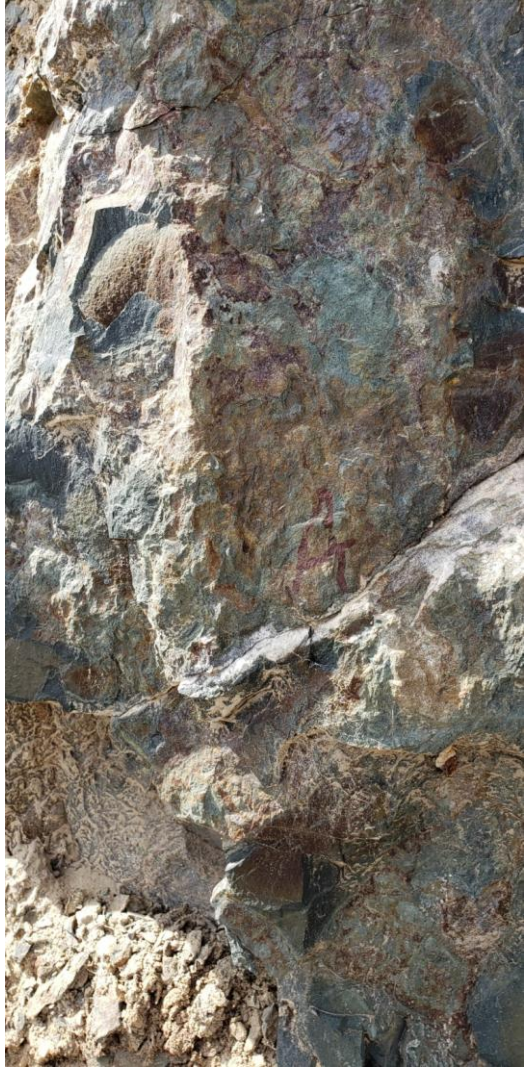
Prospecting on September 9, 2019.



Today's focus was to re-examine the rock faces from the road cuts and to determine through our prospecting and sampling if there was significant gold value in these rocks.

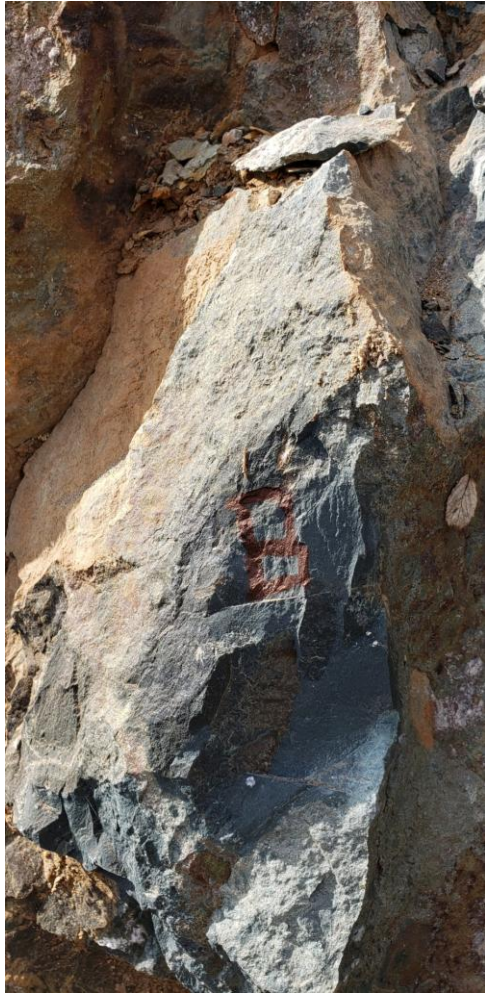


The face of the sampling area from GPS 17, 557428, 5331646. Samples A – E were taken from various settings within this face. Sample F was obtained further down the road.



Rock face, sample below from GPS 17, 557428, 5331646.





Sample B – 68108 from GPS 17, 557428, 5331646



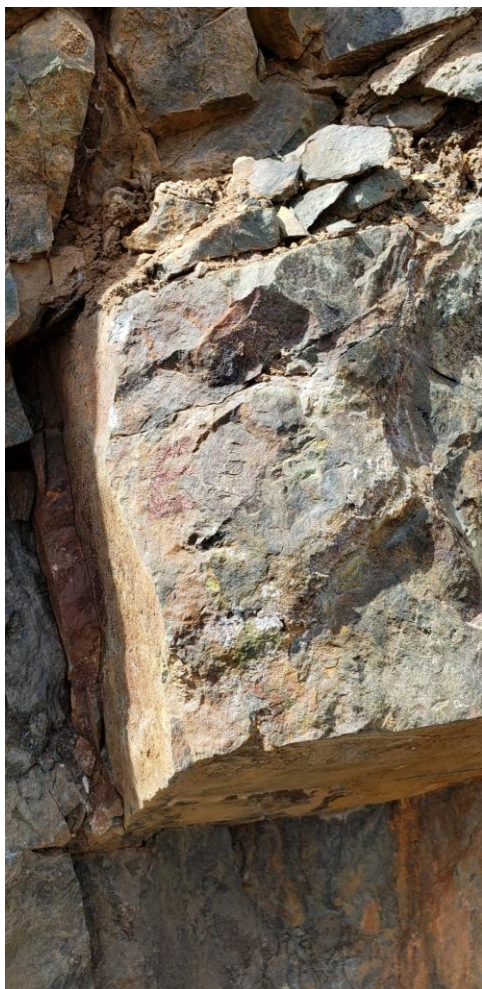
Sample C – 68109 from GPS 17, 557428, 5331646.





Sample D -- 68110 taken from GPS 17, 557428, 5331646.





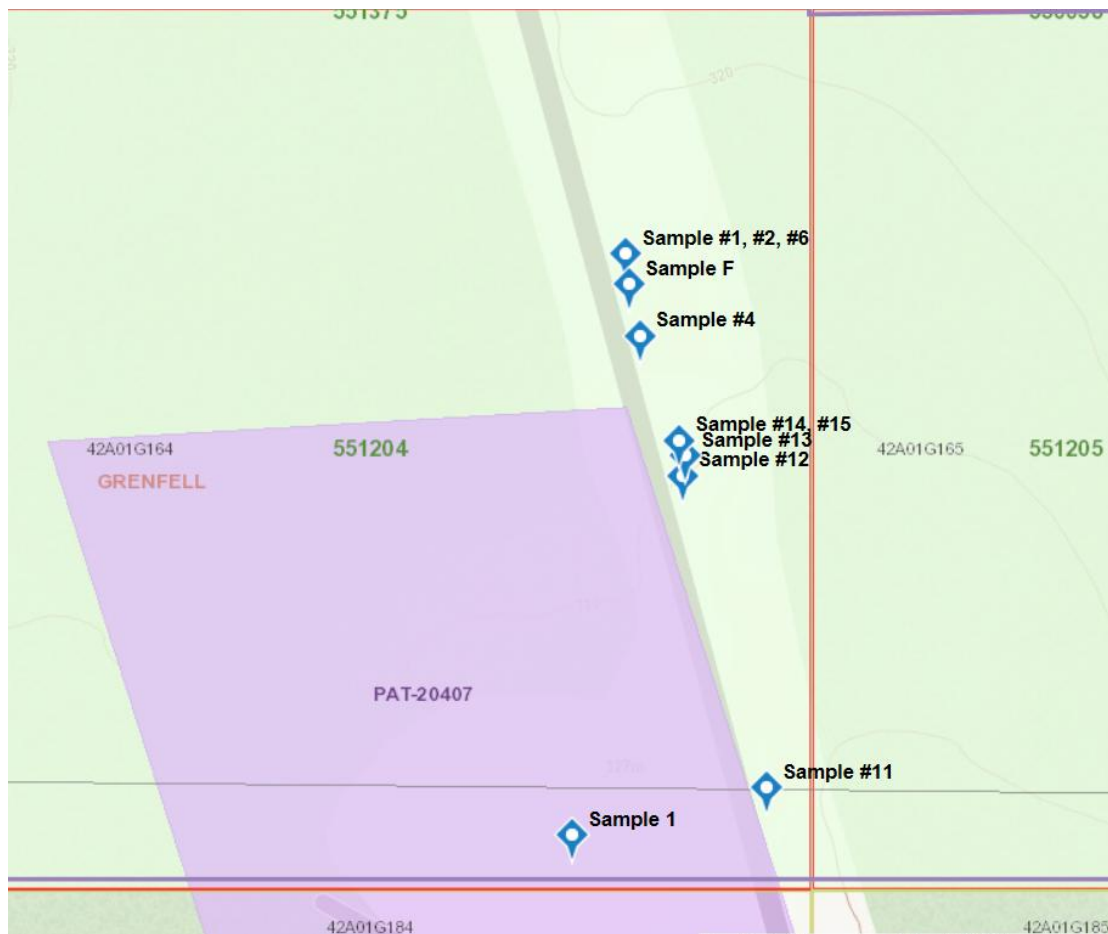
Sample E -- 68111 taken from GPS 17, 557428, 5331646





Sample F – 68112 taken from GPS 17, 557568, 5331262.



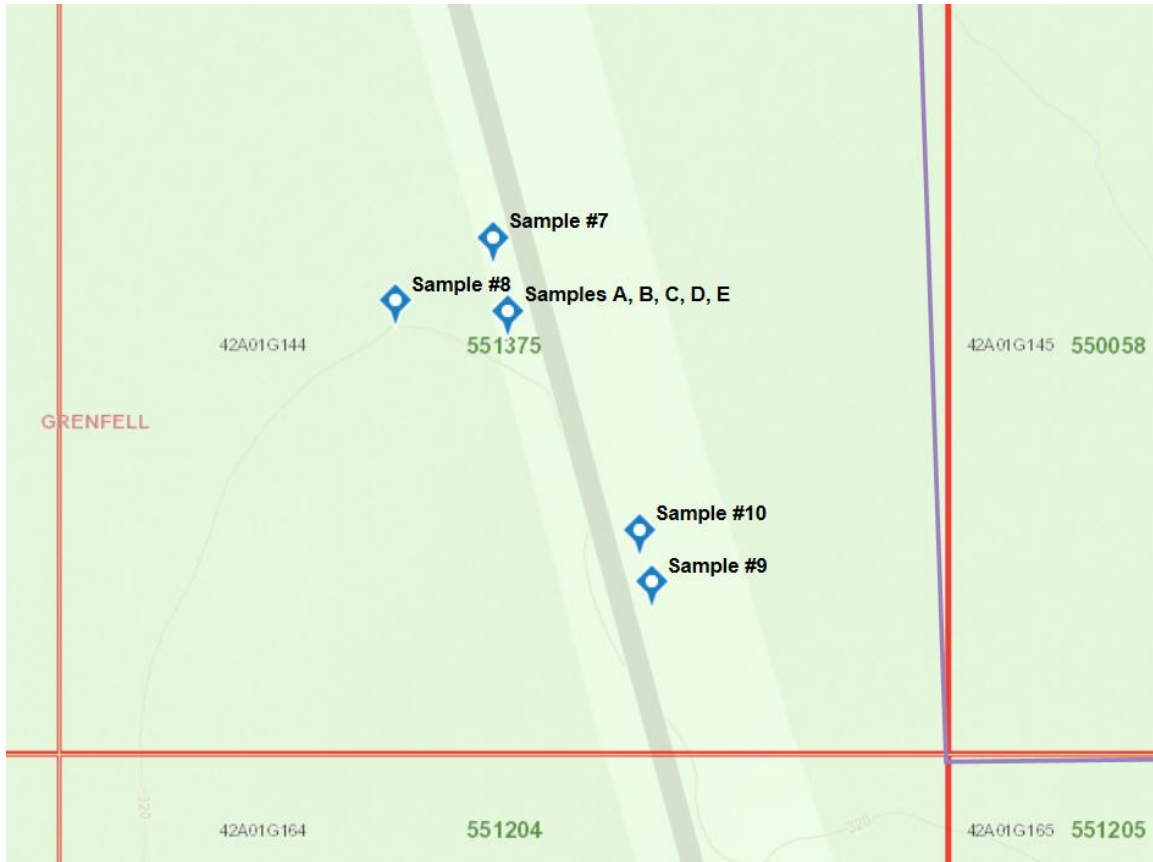


Map # 1 of 3 for sample collection.

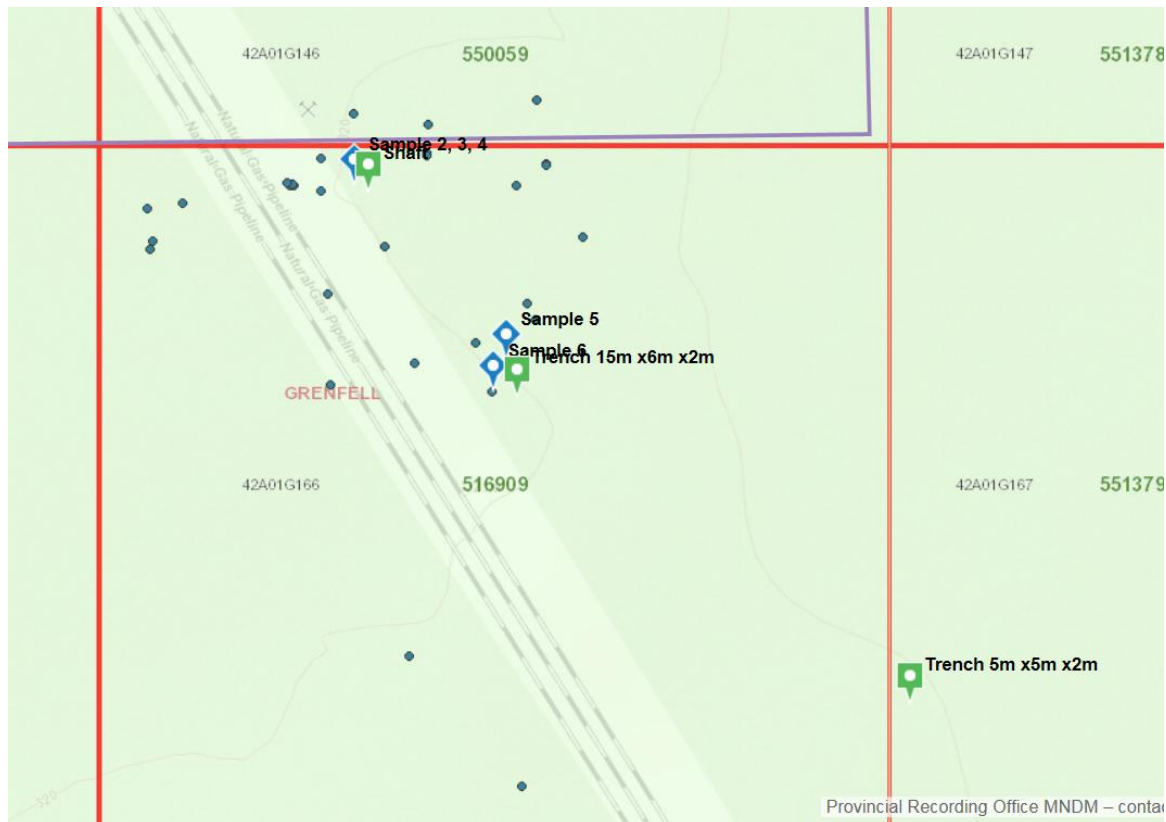
June 9 th and 15 th , 2019	GPS (17)		
Sample # 1 Tag #200922	557566, 5331277	Top of outcrop.	< 0.005 g/t Au; 115 ppm Cu;
Sample # 2 200923	Same as # 1.	High grade top of outcrop.	0.006 g/t Au; 145 ppm Cu;
Sample # 3 200924	Along strike 557573, 5331256	Small py. vein running through host rock	< 0.005 g/t Au; 70 ppm Cu;
Sample # 4 200925	557573, 5331234	Vein material, fuchsite	0.006 g/t Au; 92 ppm Cu;
Sample # 5 200929	Along strike 557573, 5331256		0.192 g/t Au; 155 ppm Cu;
Sample # 6 200930	557566, 5331277	Below outcrop from # 1 – 8 m below top.	< 0.005 g/t Au; 66 ppm Cu;
Sample # 7 200931	557421, 5331673		< 0.005 g/t Au; 74 ppm Cu; 773 ppm Mn.
Sample # 8 200932	557370, 5331641		< 0.005 g/t Au; 46 ppm

			Cu; 1260 ppm Mn.
Sample # 9 200933	557506, 5331496		< 0.005 g/t Au; 172 ppm Cu; 1070 ppm Mn.
Sample # 10 200934	557499, 5331522		< 0.005 g/t Au; 176 ppm Cu; 1170 ppm Mn.
Sample # 11 200935	557643, 5330997		0.063 g/t Au; 55 ppm Cu; 1520 ppm Mn.
Sample # 12 200936	557596, 5331161		< 0.005 g/t Au; 105 ppm Cu; 2270 ppm Mn.
Sample # 13 200937	557596, 5331164		< 0.005 g/t Au; 93 ppm Cu; 2210 ppm Mn.
Sample # 14 200938	557596, 5331170		0.008 g/t Au; 209 ppm Cu; 1650 ppm Mn.
Sample # 15 200939	Same as # 14.		0.009 g/t Au; 200 ppm Cu; 1550 ppm Mn.
August 31 st , 2019			
Sample 1 Tag # 68101	557540, 5330971		0.005/.008 g/t Au.
Sample 2 68102	558273, 5331406		3.157 g/t Au
Sample 3 68103	Same as 68102.		1.640 g/t Au
Sample 4 68104	Same as 68102.		1.178 g/t Au
Sample 5 68105	558367, 5331303		6.981/6.62 g/t Au
Sample 6 68106	558360, 5331285		1.275 g/t Au
September 9 th , 2019	These next 5 samples	from common 3 metre	wide rockface:
Sample A 68107	557428, 5331646		0.067 g/t Au
Sample B 68108			0.135 g/t Au
Sample C 68109			0.043 g/t Au
Sample D 68110			0.101 g/t Au
Sample E 68111			0.026 g/t Au
Sample F 68112	557568, 5331262		1.314 g/t Au

*On the maps showing the locations of the sampling, #1 and 1 are different samples according to the chart above, and reference sampling completed on different days.



Map # 2 of 3 for sample collection.



Map # 3 of 3 for sample collection.

Results Activation Laboratories Ltd. Report: A19-07849

Analyte Symbol	Au	Ag	Cd	Cu	Mn	Mo	Ni	Pb	Zn	Al	As	B	Ba	Be	Bi	Ca	Co	Cr	Fe	Ga	Hg	K	La
Unit Symbol	g/mt	ppm	ppm	ppm	ppm	ppm	ppm	ppm	ppm	%	ppm	ppm	ppm	ppm	ppm	%	ppm	ppm	%	ppm	ppm	%	ppm
Lower Limit	0.005	0.2	0.5	1	5	1	1	2	2	0.01	2	10	10	0.5	2	0.01	1	1	0.01	10	1	0.01	10
Method Code	FA-AA	AR-ICP	AR-ICP	AR-ICP	AR-ICP	AR-ICP	AR-ICP	AR-ICP	AR-ICP	AR-ICP	AR-ICP	AR-ICP	AR-ICP	AR-ICP	AR-ICP	AR-ICP	AR-ICP	AR-ICP	AR-ICP	AR-ICP	AR-ICP	AR-ICP	AR-ICP
290922	< 0.005	0.3	< 0.5	115	1120	< 1	28	< 2	90	2.86	< 2	16	15	< 0.5	< 2	2.88	41	26	10.5	20	< 1	0.02	< 10
290923	0.006	0.4	< 0.5	145	1440	< 1	78	< 2	111	3.37	18	16	13	< 0.5	< 2	3.84	126	22	13.3	20	< 1	< 0.01	< 10
290924	< 0.005	< 0.2	< 0.5	70	1220	< 1	30	< 2	81	2.95	4	12	17	< 0.5	< 2	2.07	36	21	10.3	10	< 1	0.03	< 10
290925	0.006	< 0.2	< 0.5	92	1230	< 1	36	< 2	67	2.47	10	13	13	< 0.5	< 2	5.70	53	17	9.19	10	< 1	0.02	< 10
290929	0.192	0.7	< 0.5	155	1400	< 1	31	< 2	90	2.79	< 2	< 10	< 10	< 0.5	< 2	4.42	39	19	9.75	10	2	< 0.01	< 10
290930	< 0.005	< 0.2	0.8	66	959	< 1	29	4	62	2.13	2	16	14	< 0.5	< 2	5.18	35	18	7.03	< 10	< 1	0.02	< 10

Results Activation Laboratories Ltd. Report: A19-07849

Analyte Symbol	Mg	Na	P	S	Sb	Sc	Sr	Ti	Th	Te	Tl	U	V	W	Y	Zr
Unit Symbol	%	%	%	%	ppm	ppm	ppm	%	ppm	ppm	ppm	ppm	ppm	ppm	ppm	ppm
Lower Limit	0.01	0.001	0.001	0.01	2	1	1	0.01	20	1	2	10	1	10	1	1
Method Code	AR-ICP	AR-ICP	AR-ICP	AR-ICP	AR-ICP	AR-ICP	AR-ICP	AR-ICP	AR-ICP	AR-ICP	AR-ICP	AR-ICP	AR-ICP	AR-ICP	AR-ICP	AR-ICP
290922	1.84	0.089	0.070	0.20	< 2	17	71	1.07	< 20	7	< 2	< 10	369	< 10	19	31
290923	2.22	0.026	0.068	3.85	4	17	70	1.05	< 20	16	< 2	< 10	360	< 10	18	30
290924	1.91	0.112	0.061	0.39	3	13	49	0.92	< 20	8	< 2	< 10	334	< 10	15	24
290925	1.52	0.062	0.053	1.07	< 2	12	63	0.83	< 20	7	< 2	< 10	273	< 10	16	22
290929	2.07	0.071	0.064	0.62	3	18	27	0.73	< 20	10	< 2	< 10	352	11	16	11
290930	1.25	0.066	0.058	0.65	< 2	12	88	0.85	< 20	8	< 2	< 10	272	< 10	15	21

Results

Activation Laboratories Ltd.

Report: A19-08031

Analyte Symbol	Au	Ag	Cd	Cu	Mn	Mo	Ni	Pb	Zn	Al	As	B	Ba	Be	Bi	Ca	Co	Cr	Fe	Ga	Hg	K	La
Unit Symbol	g/mt	ppm	ppm	ppm	ppm	ppm	ppm	ppm	ppm	%	ppm	ppm	ppm	ppm	ppm	%	ppm	ppm	%	ppm	ppm	%	ppm
Lower Limit	0.005	0.2	0.5	1	5	1	1	2	2	0.01	2	10	10	0.5	2	0.01	1	1	0.01	10	1	0.01	10
Method Code	FA-AA	AR-ICP	AR-ICP	AR-ICP	AR-ICP	AR-ICP	AR-ICP	AR-ICP	AR-ICP	AR-ICP	AR-ICP	AR-ICP	AR-ICP	AR-ICP	AR-ICP	AR-ICP	AR-ICP	AR-ICP	AR-ICP	AR-ICP	AR-ICP	AR-ICP	AR-ICP
200931	< 0.005	< 0.2	< 0.5	74	773	< 1	59	< 2	52	2.44	< 2	< 10	11	< 0.5	< 2	4.13	27	46	5.30	< 10	< 1	0.01	< 10
200932	< 0.005	< 0.2	< 0.5	46	1260	< 1	53	3	100	3.89	4	< 10	13	< 0.5	< 2	2.10	38	81	8.66	10	< 1	< 0.01	< 10
200933	< 0.005	< 0.2	< 0.5	172	1070	< 1	44	< 2	95	3.06	2	< 10	< 10	< 0.5	< 2	3.25	35	116	8.48	10	< 1	< 0.01	< 10
200934	< 0.005	< 0.2	0.6	176	1170	< 1	32	< 2	110	3.04	3	< 10	11	< 0.5	< 2	3.31	41	36	10.1	10	< 1	< 0.01	< 10
200935	0.063	< 0.2	0.6	55	1520	1	19	< 2	80	2.42	2	< 10	15	< 0.5	< 2	4.59	32	10	10.3	10	< 1	0.04	< 10
200936	< 0.005	0.3	< 0.5	105	2270	< 1	50	< 2	123	4.18	5	12	15	< 0.5	< 2	8.09	70	18	12.2	20	< 1	< 0.01	< 10
200937	< 0.005	0.4	< 0.5	93	2210	< 1	95	< 2	129	4.28	13	13	14	< 0.5	< 2	6.48	107	19	14.8	20	< 1	< 0.01	< 10
200938	0.008	0.6	< 0.5	209	1650	< 1	113	3	102	3.21	20	17	13	< 0.5	< 2	4.30	139	19	13.6	20	< 1	< 0.01	< 10
200939	0.009	0.4	< 0.5	200	1550	< 1	89	< 2	71	2.53	12	13	15	< 0.5	< 2	7.50	101	16	11.6	10	< 1	< 0.01	< 10

Results

Activation Laboratories Ltd.

Report: A19-08031

Analyte Symbol	Mg	Na	P	S	Sb	Sc	Sr	Ti	Th	Te	Tl	U	V	W	Y	Zr
Unit Symbol	%	%	%	%	ppm	ppm	ppm	%	ppm	ppm	ppm	ppm	ppm	ppm	ppm	ppm
Lower Limit	0.01	0.001	0.001	0.01	2	1	1	0.01	20	1	2	10	1	10	1	1
Method Code	AR-ICP	AR-ICP	AR-ICP	AR-ICP	AR-ICP	AR-ICP	AR-ICP	AR-ICP	AR-ICP	AR-ICP	AR-ICP	AR-ICP	AR-ICP	AR-ICP	AR-ICP	AR-ICP
200931	1.95	0.033	0.032	0.21	< 2	4	42	0.50	< 20	9	< 2	< 10	150	< 10	10	10
200932	3.47	0.036	0.038	0.10	4	12	25	0.64	< 20	6	< 2	< 10	289	< 10	12	18
200933	2.87	0.050	0.039	0.10	4	11	19	0.48	< 20	7	< 2	< 10	331	< 10	11	7
200934	2.42	0.041	0.049	0.29	3	13	17	0.55	< 20	12	< 2	< 10	425	< 10	13	8
200935	1.76	0.047	0.085	0.70	5	28	78	0.01	< 20	2	< 2	< 10	333	< 10	12	4
200936	3.50	0.025	0.048	1.75	4	15	37	0.73	< 20	6	< 2	< 10	329	< 10	20	21
200937	3.42	0.026	0.048	4.17	6	15	29	0.71	< 20	8	< 2	< 10	341	< 10	16	22
200938	2.31	0.019	0.063	5.97	4	13	40	0.84	< 20	9	< 2	< 10	312	< 10	16	27
200939	1.78	0.022	0.048	3.57	3	11	43	0.73	< 20	13	< 2	< 10	249	< 10	17	23

Laboratoire Expert Inc.

750 A rue Saguenay
Rouyn-Noranda, Québec
Canada J9X 7B5
Telephone : (819) 762-7100, Fax : (819) 762-7510

*** Certificate of analysis ***

Date : 2020/01/24

Page : 1 of 1

Client : Scott Woolhead Exploration	Folder : 56472
Addressee : Scott Woolhead	Order number :
305 Corporation Street Porcupine Ontario P0N 1C0 Telephone : (705) 235-5524	No Envoi (Dispatch) :
	Project : GRONFELL
	Total number of samples : 12

Designation	Au FA-GEO Ppb 3	Au-Dup FA-GEO Ppb 3	Au FA-GRAV g/t 0/03
68101	5	8	
68102	3157		
68103	1640		
68104	1178		
68105	6981		6.62
68106	1275		
68107	67		
68108	135		
68109	43		
68110	101		
68111	26		
68112	1314		



Joe Landers, Manager

Conclusions:

Though there are some indicators of Au in the road cuts along highway 11 the best assays have, not surprisingly, come from the area of the old mine shaft and blasted pit located in the original claim cell. The assays indicate that more work will have to be done in the cell itself to ascertain if there are more unlocked veins to discover. Therefore, future prospecting will take place on the original cell claim number 516909.

Sincerely,
Scott Woolhead.

Daily Log

Grenfell claims Prospecting Trips 2019.

June 9th, 2019.

Left Timmins just before 10am; filled truck with fuel.

Drove from Timmins to claim # in Grenfell township.

Today's work was concentrated on the outcrop on the east side of the highway. Significant amounts of chalcopyrite was discovered in a road cut on this claim (551204). Samples 200922 to 200925, 200929, and 200930 were collected. The samples were delivered to the lab on the 13th of June.

One person – Scott Woolhead -- at \$350/day.

214 km travelled today.

Lunch at \$20/person.

June 15th, 2019

Left Timmins by 8:30am

We returned on this day to check out the outcrops on the west side of the road and to the north (claim 551375) as well as to revisit the southern rock cut on claim # 551204.

Two persons were involved in the work today –. We also hiked through the wooded area on the west side of the highway to prospect the outcrop there. Nothing of note was discovered in the wooded area.

We collected sample #'s 200931 to 200939. These samples were delivered on the 17th of June.

Scott Woolhead and Esther Woolhead at \$350/day

214 km travelled

today.

August 31st, 2019

Left Timmins today a little later at 9:30am.

Today's targets were the old shafts and trenches as listed on the ENDM claim maps with a side tour to the rock dump that was created when they blasted the highway rock cuts. I took one sample from this rock dump to give me an idea of what might be here. I used this prospecting trip to look for the veins that were written up in the MNM reports.

We were unable to find the southernmost occurrence (on claim # 551379) as in any outcrop in the immediate vicinity but did find a minor trench that has all but blended into the surrounding ground cover. No hazard here. Lots of second tree growth and sandy soil. There are a number of outcrops in the area and on the route in that provide some insight into the underlying rocks, many with some pyrite in the rock

(under 1 %). We took one representational sample from an outcrop but in the end did not submit it to the lab.

The second target was the shaft located on claim # 516909. Three samples were taken from the area of the shaft within the muck pile. I also found a second large excavated pit that measured 15m long, 6 m wide and 2 m deep. It was also dry within it.

The third target was registered as an open pit and when we found it was about 5m x 5m x 2 m deep with water covering it from a beaver dam. After rooting around in the area I only pulled one sample from the pit area, and one from the muck pile beside the pit. Some minor quartz veining and 2% pyrite.

Two persons – Scott Woolhead and Kathleen Woolhead -- at \$350pp/day. 214 km travelled today.

September 9th, 2019

Today I left the house early before 8am today to travel to our claims 551375, and 551204. As it was early when I arrived at the highway rock cut, I saw something in the rock that I did not see in my earlier visits as the sun was not shining directly on the rockcut due to my arrival later in the day. The rock seemed to be aglow with pyrite and I took six samples from this area today. I finished up the day by going to the southern reaches of the claim to prospect in the outcrops there.

One person -- Scott Woolhead -- at \$350/day. 214 km travelled today.

Lunch at \$20/person.

Samples 68101 to 68112 were taken to the Lab in Rouyn in January 2020.