

We are committed to providing [accessible customer service](#).

If you need accessible formats or communications supports, please [contact us](#).

Nous tenons à améliorer [l'accessibilité des services à la clientèle](#).

Si vous avez besoin de formats accessibles ou d'aide à la communication, veuillez [nous contacter](#).

Physical Prospecting completed on September 14, 2019

By Leonard Cook and Jason Cook on claim numbers: 313509; 227468;
209576

The work was done to mark the new corner posts, due to the change in
mining claim boundaries

in 2018. We also looked for outcrops and any sign of garnet or
mineralization on our most southerly mining claims.

LOCATION AND ACCESS

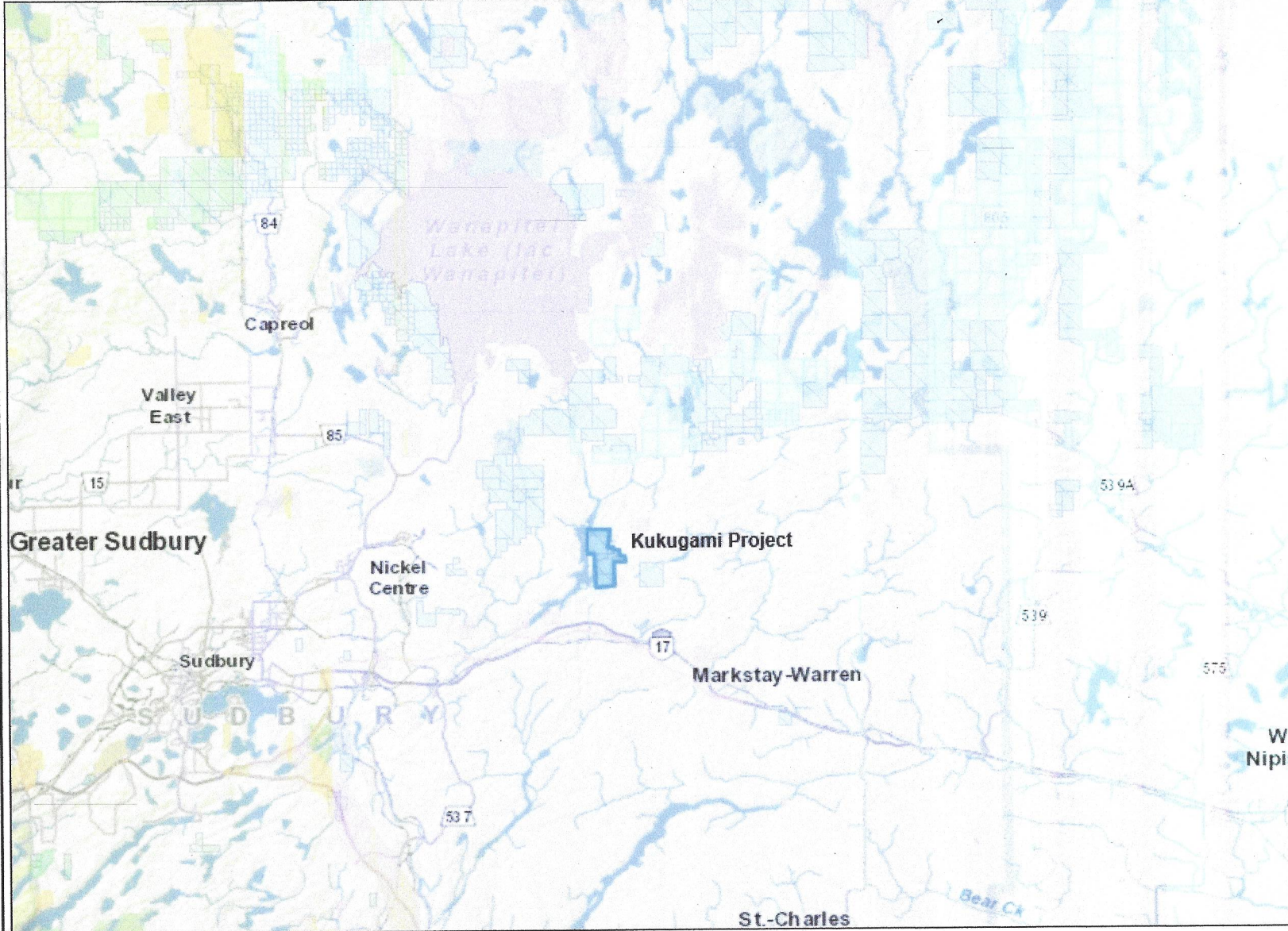
The property is located in east-central Street Township, approximately 20 air miles (32 kms) from the Greater City of Sudbury. Access is via Highway 17 East onto Kukagami Lake Road for approximately 5 kms.

PROPERTY & OWNERSHIP

The property is being explored for industrial minerals, specifically garnet, suitable for use with water jet cutting and other abrasive purposes for which markets exist.

Also, there is gold showing north east of the property, which lies on a fault running through the middle of the property.

The properties are held by Leonard Cook and Jason Cook.



Legend

- Administration Boundaries**
 - Mining Divisions
 - Residents Geologist District
 - Townships and Areas
 - UTM Grid
 - Geographic Lot Fabric
 - Other Federal Land
- Mineral Tenure Grid**
 - OMTG Tenure Grid
- Alienations**
 - Withdrawal
 - Ejecta
- Unpatented Claim**
 - Active
 - Reconciled
 - Pending
- Disposition**
 - Disposition
- Disposition Symbols**
 - Camp
 - Disposition Unknown/Pending
 - Freehold Patent Mining Rights Only
 - Freehold Patent Surface Rights Only
 - Freehold Patent Surface and Mining Rights
 - Land Use Permit
 - Leasehold Patent Mining Rights Only
 - Leasehold Patent Surface Rights Only
 - Leasehold Patent Surface and Mining Rights
 - License of Occupation Mining Use Only
 - License of Occupation Surface Use Only
 - License of Occupation Surface and Mining Rights
 - License of Occupation Uses Not Specified
 - Order in Council
 - Tower
 - WPLA
- Geology Layers**
 - AMIS Sites
 - AMIS Features
 - Drill Holes
 - Mineral Occurrences

0 20.16 km

Projection: Web Mercator



The Ontario Ministry of Northern Development and Mines shall not be liable in any way for the use of, or reliance upon, this map or any information on this map. This map should not be used for: navigation, a plan of survey, routes, nor locations.

© Queen's Printer for Ontario, 2016

Imagery Copyright Notices: Ontario Ministry of Natural Resources and Forestry; NASA Landsat Program; First Base Solutions Inc.; Aéro-Photo (1961) Inc.; DigitalGlobe Inc.; U.S. Geological Survey.

© Copyright for Ontario Parcel data is held by Queen's Printer for Ontario and its licensors and may not be reproduced without permission.

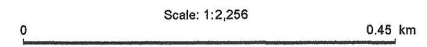
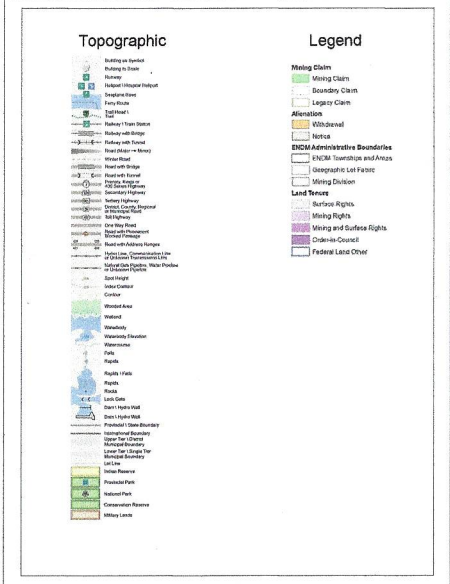
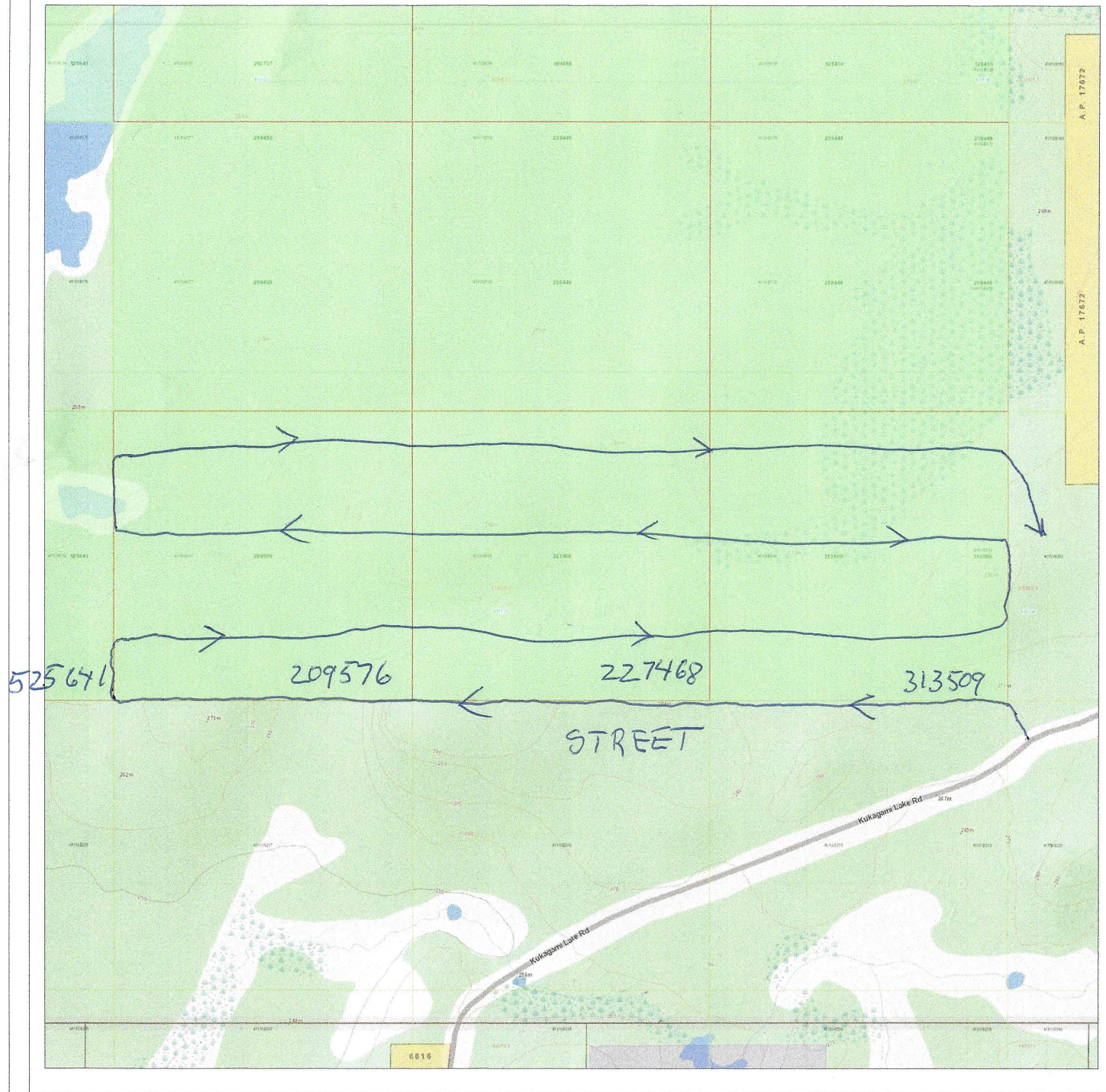


Ontario Ministry of Northern Development and Mines
Mining Lands Claim Map

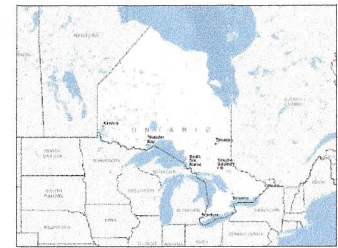
Administrative Districts

Township **Unknown** **STREET**
Mining Division

Land Registry
Unknown
MNR District Office
Sudbury



Map Datum: NAD 83
Projection: Web Mercator



Those wishing to stake mining claims should consult with the Provincial Mining Recorders' Office of the Ministry of Northern Development and Mines for additional information on the status of the lands shown herein. This map is not intended for navigational, survey, or land title determination purposes as the information shown on this map is compiled from various sources.

Completeness and accuracy are not guaranteed.

Additional information may also be obtained through the local Land Titles or Registry Office, or the Ministry of Natural Resources and Forestry.

The information shown is derived from digital data available in the Provincial Mining Recorders' Office at the time of downloading from the Ministry of Northern Development and Mines web site.

© Queen's Printer for Ontario, 2016

Mars h. area.

Hill with
Sand stone
Quartz & Micg

20g ↓

Direction walked ↗

aprox.
350m to
Corner Post
↓

Marsh area
Black spruce.

N ↑

Prospecting
map #1
of claim
313509

Hill aprox 15m
Quartz Garnet & micg

Flat mossy

aprox.
250m to
Corner Post
↓

Large hill
of gravel

Flat Pine spruce Birch

aprox 100m to post

Boulder with garnet.

Flat Red pine

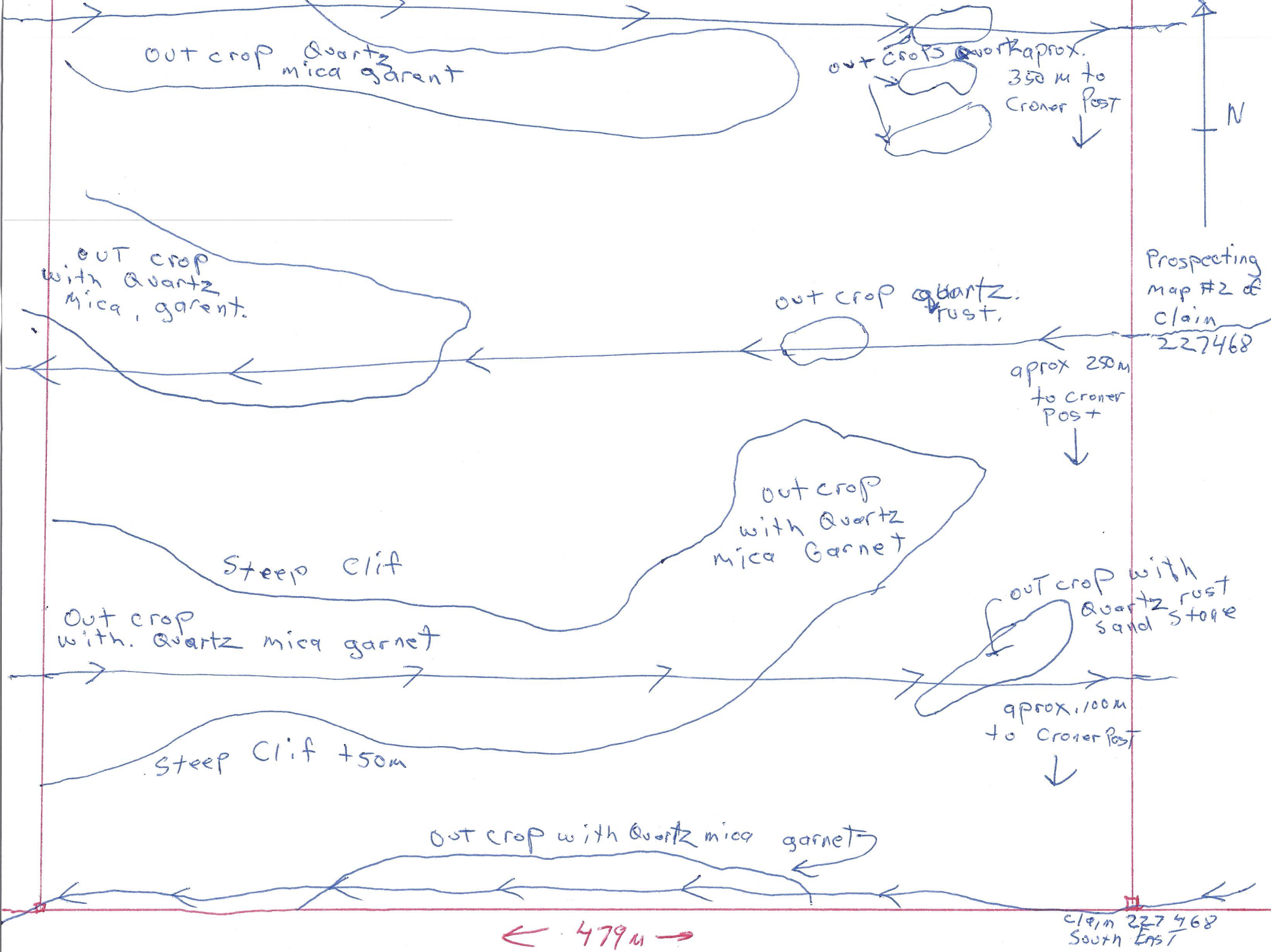
Large

Direction walked ↙

Mark corner post

← 479 m. →

Mark corner Post
South East of claim 313509



out crop Quartz mica garnet

out crops Quartz approx. 350 m to Croner Post

N

Prospecting map #2 of claim 227468

out crop with Quartz Mica, garnet.

out crop quartz rust.

approx 250 m to Croner Post

out crop with Quartz Mica Garnet

Steep cliff

out crop with Quartz rust sand stone

Out crop with Quartz mica garnet

approx. 100 m to Croner Post

Steep Cliff + 50m

out crop with Quartz mica garnet

← 479 m →

claim 227468 South East



Out crop
garnet mica
quartz

Logging
road

Snow mobile
trail

Cliff
+20 m
Quartz
mica
garnet.

Cliff
+30 m

Quartz mica
garnet

Prospecting
Map #3
of claim
209576

N

Creek

Flat swampy

Quartz mica garnet

Cliff +75m

Outcrop Quartz Rust
Sand Stone

Out crop
Quartz rust
mica

Logging
road
Snow mobile trail

60 M. Drop.
Steep hill
Quartz
Lots of garnet

← 479 M. →

claim 209576
South east corner