

We are committed to providing [accessible customer service](#).

If you need accessible formats or communications supports, please [contact us](#).

Nous tenons à améliorer [l'accessibilité des services à la clientèle](#).

Si vous avez besoin de formats accessibles ou d'aide à la communication, veuillez [nous contacter](#).

# BATTERY

## MINERAL RESOURCES

### **Abstract**

Between May 30<sup>th</sup> and June 14<sup>th</sup>, 2018 Airborne Imaging flew a LiDAR survey over the Elk Lake Project. The imaging encompassed an area of 119.14 square kilometers.

**BATTERY MINERAL RESOURCES  
LIMITED.**

**Elk Lake Project  
LiDAR Survey**

**C Jason Ploeger, P.Ge. – June 22, 2020**

## TABLE OF CONTENTS

<b>1.</b>	<b>SUMMARY .....</b>	<b>3</b>
1.1	PROJECT NAME.....	3
1.2	LOCATION .....	3
1.3	DATES .....	3
1.4	OBJECTIVE.....	3
1.5	OBJECTIVE.....	3
1.6	CLIENT .....	3
1.7	RESULTS .....	3
1.8	COORDINATES .....	3
<b>2.</b>	<b>SURVEY DETAILS.....</b>	<b>4</b>
2.1	LOCATION .....	4
2.2	ACCESS .....	26
2.3	LOCATION .....	27
2.4	HISTORIC WORK .....	28
2.5	REGIONAL & LOCAL GEOLOGY .....	36
2.6	MINERALIZATION .....	40
<b>3.</b>	<b>OVERVIEW OF SURVEY RESULTS .....</b>	<b>41</b>
3.1	SUMMARY .....	41
3.2	RECOMMENDATIONS.....	42

## LIST OF APPENDICES

- APPENDIX A: STATEMENT OF QUALIFICATIONS**
- APPENDIX B: THEORETICAL BASIS AND SURVEY PROCEDURES**
- APPENDIX C: INSTRUMENT SPECIFICATIONS**
- APPENDIX D: LIST OF MAPS (IN MAP POCKET)**
- APPENDIX E: LIDAR PROJECT SUMMARY**

## LIST OF TABLES AND FIGURES

Figure 1: Location of the Elk Lake Property .....	27
Figure 2: Geology of Elk Lake Project .....	39
Figure 3: LiDAR image .....	41
Figure 4: LiDAR Image of the Mapes-Johnson Silver Mine .....	42
Table 1: Elk Lake Property Cells .....	26
Table 2: Elk Lake Historical Drill Programs .....	28

---

## 1. SUMMARY

### 1.1 PROJECT NAME

This project is known as the **Elk Lake Project**.

### 1.2 LOCATION

The work that was performed was a LiDAR survey over Battery Mineral Resources Limited, Elk Lake Project. The coverage for this survey was 119.14 square kilometers.

### 1.3 DATES

The survey was performed between May 30<sup>th</sup> and June 14<sup>th</sup>, 2018 and comprised of 5 field days.

### 1.4 OBJECTIVE

The LiDAR survey was performed to help identify access, outcrop and historical feature locations for future exploration programs.

### 1.5 OBJECTIVE

The LiDAR survey was performed by Airborne Imaging from Calgary, Alberta.

### 1.6 CLIENT

Battery Mineral Resources Limited  
Level 36  
Governor Phillip Tower  
1 Farer Place  
Sydney  
Australia

### 1.7 RESULTS

The LiDAR survey successfully identified the location numerous historical features that were previously mislocated on the MDI and AMIS sites or previously unrecorded.

### 1.8 COORDINATES

All Coordinate references are in NAD83 UTM Zone 17 or Lat/Long

## 2. SURVEY DETAILS

### 2.1 LOCATION

The Elk Lake Property is, located in Mickle, Farr, James and Barber Townships.

Tenure ID	Cell ID(s)	Holder	Township / Area
100051	41P09F260	(100) BATTERY MINERAL RESOURCES LIMITED	BARBER
100052	41P09G262	(100) BATTERY MINERAL RESOURCES LIMITED	BARBER
100075	41P09G122	(100) BATTERY MINERAL RESOURCES LIMITED	BARBER
100083	41P09F355	(100) BATTERY MINERAL RESOURCES LIMITED	WILLET
100084	41P09F218	(100) BATTERY MINERAL RESOURCES LIMITED	BARBER
100085	41P09F257	(100) BATTERY MINERAL RESOURCES LIMITED	BARBER, WILLET
100104	41P09G302	(100) BATTERY MINERAL RESOURCES LIMITED	BARBER
100126	41P09F379	(100) BATTERY MINERAL RESOURCES LIMITED	BARBER
100144	41P09F313	(100) BATTERY MINERAL RESOURCES LIMITED	WILLET
100145	41P09F333	(100) BATTERY MINERAL RESOURCES LIMITED	WILLET
100152	41P09F119	(100) BATTERY MINERAL RESOURCES LIMITED	BARBER
100154	41P09G061	(100) BATTERY MINERAL RESOURCES LIMITED	BARBER
115658	41P09G203	(100) BATTERY MINERAL RESOURCES LIMITED	BARBER
115691	41P09G102	(100) BATTERY MINERAL RESOURCES LIMITED	BARBER
115716	41P09F353	(100) BATTERY MINERAL RESOURCES LIMITED	WILLET
115717	41P09F376	(100) BATTERY MINERAL RESOURCES LIMITED	WILLET
115719	41P09F300	(100) BATTERY MINERAL RESOURCES LIMITED	BARBER
115737	41P09G284	(100) BATTERY MINERAL RESOURCES LIMITED	BARBER
115738	41P09G303	(100) BATTERY MINERAL RESOURCES LIMITED	BARBER
115739	41P09G321	(100) BATTERY MINERAL RESOURCES LIMITED	BARBER
115873	41P09G183	(100) BATTERY MINERAL RESOURCES LIMITED	BARBER
125008	41P09G264	(100) BATTERY MINERAL RESOURCES LIMITED	BARBER
125009	41P09G261	(100) BATTERY MINERAL RESOURCES LIMITED	BARBER
125550	41P09G143	(100) BATTERY MINERAL RESOURCES LIMITED	BARBER
125562	41P09F395	(100) BATTERY MINERAL RESOURCES LIMITED	WILLET
125563	41P09F298	(100) BATTERY MINERAL RESOURCES LIMITED	BARBER
125564	41P09F319	(100) BATTERY MINERAL RESOURCES LIMITED	BARBER
125593	41P09F256	(100) BATTERY MINERAL RESOURCES LIMITED	WILLET
125594	41P09F254	(100) BATTERY MINERAL RESOURCES LIMITED	WILLET
125595	41P09F274	(100) BATTERY MINERAL RESOURCES LIMITED	WILLET
125599	41P09F400	(100) BATTERY MINERAL RESOURCES LIMITED	BARBER
125619	41P09G065	(100) BATTERY MINERAL RESOURCES LIMITED	BARBER
125620	41P09G063	(100) BATTERY MINERAL RESOURCES LIMITED	BARBER
126446	41P16C364	(100) BATTERY MINERAL RESOURCES LIMITED	JAMES, SMYTH
142002	41P09G242	(100) BATTERY MINERAL RESOURCES LIMITED	BARBER
142034	41P09G144	(100) BATTERY MINERAL RESOURCES LIMITED	BARBER
142056	41P09F299	(100) BATTERY MINERAL RESOURCES LIMITED	BARBER
142057	41P09F337	(100) BATTERY MINERAL RESOURCES LIMITED	BARBER, WILLET
142058	41P09F359	(100) BATTERY MINERAL RESOURCES LIMITED	BARBER
142059	41P09F358	(100) BATTERY MINERAL RESOURCES LIMITED	BARBER
142066	41P09G363	(100) BATTERY MINERAL RESOURCES LIMITED	BARBER
142067	41P09G383	(100) BATTERY MINERAL RESOURCES LIMITED	BARBER
142075	41P09G282	(100) BATTERY MINERAL RESOURCES LIMITED	BARBER
142076	41P09G341	(100) BATTERY MINERAL RESOURCES LIMITED	BARBER
142120	41P09F118	(100) BATTERY MINERAL RESOURCES LIMITED	BARBER
142715	41P09G161	(100) BATTERY MINERAL RESOURCES LIMITED	BARBER
142741	41P09G361	(100) BATTERY MINERAL RESOURCES LIMITED	BARBER

Tenure ID	Cell ID(s)	Holder	Township / Area
154402	41P16C385	(100) BATTERY MINERAL RESOURCES LIMITED	JAMES
154403	41P09K005	(100) BATTERY MINERAL RESOURCES LIMITED	JAMES
154404	41P09K003	(100) BATTERY MINERAL RESOURCES LIMITED	JAMES
154780	41P09F236	(100) BATTERY MINERAL RESOURCES LIMITED	WILLET
154812	41P09G141	(100) BATTERY MINERAL RESOURCES LIMITED	BARBER
154825	41P09F239	(100) BATTERY MINERAL RESOURCES LIMITED	BARBER
154826	41P09F279	(100) BATTERY MINERAL RESOURCES LIMITED	BARBER
154852	41P09G304	(100) BATTERY MINERAL RESOURCES LIMITED	BARBER
154853	41P09G322	(100) BATTERY MINERAL RESOURCES LIMITED	BARBER
154867	41P09F235	(100) BATTERY MINERAL RESOURCES LIMITED	WILLET
154894	41P09F293	(100) BATTERY MINERAL RESOURCES LIMITED	WILLET
154899	41P09F198	(100) BATTERY MINERAL RESOURCES LIMITED	BARBER
170842	41P09G204	(100) BATTERY MINERAL RESOURCES LIMITED	BARBER
170872	41P09F160	(100) BATTERY MINERAL RESOURCES LIMITED	BARBER
170884	41P09F356	(100) BATTERY MINERAL RESOURCES LIMITED	WILLET
170885	41P09F277	(100) BATTERY MINERAL RESOURCES LIMITED	BARBER, WILLET
171420	41P09F253	(100) BATTERY MINERAL RESOURCES LIMITED	WILLET
171452	41P09F098	(100) BATTERY MINERAL RESOURCES LIMITED	BARBER
171454	41P09G062	(100) BATTERY MINERAL RESOURCES LIMITED	BARBER
171455	41P09F078	(100) BATTERY MINERAL RESOURCES LIMITED	BARBER
171456	41P09G084	(100) BATTERY MINERAL RESOURCES LIMITED	BARBER
200109	41P09G222	(100) BATTERY MINERAL RESOURCES LIMITED	BARBER
200133	41P09G123	(100) BATTERY MINERAL RESOURCES LIMITED	BARBER
200134	41P09G142	(100) BATTERY MINERAL RESOURCES LIMITED	BARBER
200181	41P09F275	(100) BATTERY MINERAL RESOURCES LIMITED	WILLET
200182	41P09F273	(100) BATTERY MINERAL RESOURCES LIMITED	WILLET
200705	41P09F100	(100) BATTERY MINERAL RESOURCES LIMITED	BARBER
200706	41P09F178	(100) BATTERY MINERAL RESOURCES LIMITED	BARBER
200711	41P09G083	(100) BATTERY MINERAL RESOURCES LIMITED	BARBER
200837	41P09G362	(100) BATTERY MINERAL RESOURCES LIMITED	BARBER
208123	41P09F237	(100) BATTERY MINERAL RESOURCES LIMITED	BARBER, WILLET
208167	41P09F120	(100) BATTERY MINERAL RESOURCES LIMITED	BARBER
208176	41P09F394	(100) BATTERY MINERAL RESOURCES LIMITED	WILLET
208179	41P09F360	(100) BATTERY MINERAL RESOURCES LIMITED	BARBER
208212	41P09F255	(100) BATTERY MINERAL RESOURCES LIMITED	WILLET
208744	41P09F294	(100) BATTERY MINERAL RESOURCES LIMITED	WILLET
208751	41P09F180	(100) BATTERY MINERAL RESOURCES LIMITED	BARBER
208752	41P09F080	(100) BATTERY MINERAL RESOURCES LIMITED	BARBER
208854	41P09G181	(100) BATTERY MINERAL RESOURCES LIMITED	BARBER
220270	41P09F338	(100) BATTERY MINERAL RESOURCES LIMITED	BARBER
220282	41P09G343	(100) BATTERY MINERAL RESOURCES LIMITED	BARBER
220294	41P09F234	(100) BATTERY MINERAL RESOURCES LIMITED	WILLET
220926	41P09G163	(100) BATTERY MINERAL RESOURCES LIMITED	BARBER
227551	41P09F357	(100) BATTERY MINERAL RESOURCES LIMITED	BARBER, WILLET
227554	41P09F339	(100) BATTERY MINERAL RESOURCES LIMITED	BARBER
227570	41P09G324	(100) BATTERY MINERAL RESOURCES LIMITED	BARBER
227610	41P09F316	(100) BATTERY MINERAL RESOURCES LIMITED	WILLET
227615	41P09F200	(100) BATTERY MINERAL RESOURCES LIMITED	BARBER
227618	41P09G082	(100) BATTERY MINERAL RESOURCES LIMITED	BARBER
228241	41P09G382	(100) BATTERY MINERAL RESOURCES LIMITED	BARBER
228242	41P09G381	(100) BATTERY MINERAL RESOURCES LIMITED	BARBER
266722	41P09G201	(100) BATTERY MINERAL RESOURCES LIMITED	BARBER
266723	41P09F220	(100) BATTERY MINERAL RESOURCES LIMITED	BARBER
266724	41P09G221	(100) BATTERY MINERAL RESOURCES LIMITED	BARBER
266725	41P09G243	(100) BATTERY MINERAL RESOURCES LIMITED	BARBER

Tenure ID	Cell ID(s)	Holder	Township / Area
266726	41P09G263	(100) BATTERY MINERAL RESOURCES LIMITED	BARBER
266748	41P09G124	(100) BATTERY MINERAL RESOURCES LIMITED	BARBER
266749	41P09F140	(100) BATTERY MINERAL RESOURCES LIMITED	BARBER
266764	41P09F375	(100) BATTERY MINERAL RESOURCES LIMITED	WILLET
266765	41P09F373	(100) BATTERY MINERAL RESOURCES LIMITED	WILLET
266766	41P09F259	(100) BATTERY MINERAL RESOURCES LIMITED	BARBER
266767	41P09F278	(100) BATTERY MINERAL RESOURCES LIMITED	BARBER
266796	41P09G323	(100) BATTERY MINERAL RESOURCES LIMITED	BARBER
266818	41P09F296	(100) BATTERY MINERAL RESOURCES LIMITED	WILLET
266839	41P09F159	(100) BATTERY MINERAL RESOURCES LIMITED	BARBER
266840	41P09F199	(100) BATTERY MINERAL RESOURCES LIMITED	BARBER
266935	41P16C363	(100) BATTERY MINERAL RESOURCES LIMITED	JAMES,SMYTH
267442	41P09G182	(100) BATTERY MINERAL RESOURCES LIMITED	BARBER
274147	41P09G241	(100) BATTERY MINERAL RESOURCES LIMITED	BARBER
274182	41P09G121	(100) BATTERY MINERAL RESOURCES LIMITED	BARBER
274197	41P09F354	(100) BATTERY MINERAL RESOURCES LIMITED	WILLET
274198	41P09F258	(100) BATTERY MINERAL RESOURCES LIMITED	BARBER
274199	41P09F317	(100) BATTERY MINERAL RESOURCES LIMITED	BARBER,WILLET
274200	41P09F340	(100) BATTERY MINERAL RESOURCES LIMITED	BARBER
274214	41P09G301	(100) BATTERY MINERAL RESOURCES LIMITED	BARBER
274215	41P09G342	(100) BATTERY MINERAL RESOURCES LIMITED	BARBER
274735	41P09F276	(100) BATTERY MINERAL RESOURCES LIMITED	WILLET
274766	41P09F315	(100) BATTERY MINERAL RESOURCES LIMITED	WILLET
274767	41P09F314	(100) BATTERY MINERAL RESOURCES LIMITED	WILLET
274768	41P09F334	(100) BATTERY MINERAL RESOURCES LIMITED	WILLET
274772	41P09F196	(100) BATTERY MINERAL RESOURCES LIMITED	WILLET
274776	41P09G064	(100) BATTERY MINERAL RESOURCES LIMITED	BARBER
274777	41P09G081	(100) BATTERY MINERAL RESOURCES LIMITED	BARBER
274881	41P09G164	(100) BATTERY MINERAL RESOURCES LIMITED	BARBER
274882	41P09G184	(100) BATTERY MINERAL RESOURCES LIMITED	BARBER
274923	41P16C384	(100) BATTERY MINERAL RESOURCES LIMITED	JAMES
286281	41P09F217	(100) BATTERY MINERAL RESOURCES LIMITED	BARBER,WILLET
286843	41P09G101	(100) BATTERY MINERAL RESOURCES LIMITED	BARBER
286859	41P09F377	(100) BATTERY MINERAL RESOURCES LIMITED	BARBER,WILLET
286860	41P09F397	(100) BATTERY MINERAL RESOURCES LIMITED	BARBER,WILLET
286861	41P09F219	(100) BATTERY MINERAL RESOURCES LIMITED	BARBER
286863	41P09F320	(100) BATTERY MINERAL RESOURCES LIMITED	BARBER
286868	41P09G344	(100) BATTERY MINERAL RESOURCES LIMITED	BARBER
286875	41P09G283	(100) BATTERY MINERAL RESOURCES LIMITED	BARBER
286895	41P09F380	(100) BATTERY MINERAL RESOURCES LIMITED	BARBER
286908	41P09F295	(100) BATTERY MINERAL RESOURCES LIMITED	WILLET
286909	41P09F336	(100) BATTERY MINERAL RESOURCES LIMITED	WILLET
286910	41P09F335	(100) BATTERY MINERAL RESOURCES LIMITED	WILLET
286912	41P09F099	(100) BATTERY MINERAL RESOURCES LIMITED	BARBER
286913	41P09F139	(100) BATTERY MINERAL RESOURCES LIMITED	BARBER
286914	41P09F138	(100) BATTERY MINERAL RESOURCES LIMITED	BARBER
286915	41P09F179	(100) BATTERY MINERAL RESOURCES LIMITED	BARBER
286916	41P09F197	(100) BATTERY MINERAL RESOURCES LIMITED	BARBER,WILLET
287004	41P16C383	(100) BATTERY MINERAL RESOURCES LIMITED	JAMES
287518	41P09G162	(100) BATTERY MINERAL RESOURCES LIMITED	BARBER
302604	41P09G224	(100) BATTERY MINERAL RESOURCES LIMITED	BARBER
302605	41P09G223	(100) BATTERY MINERAL RESOURCES LIMITED	BARBER
302606	41P09G244	(100) BATTERY MINERAL RESOURCES LIMITED	BARBER
302634	41P09G104	(100) BATTERY MINERAL RESOURCES LIMITED	BARBER
302644	41P09F396	(100) BATTERY MINERAL RESOURCES LIMITED	WILLET

Tenure ID	Cell ID(s)	Holder	Township / Area
302645	41P09F238	(100) BATTERY MINERAL RESOURCES LIMITED	BARBER
302683	41P09F398	(100) BATTERY MINERAL RESOURCES LIMITED	BARBER
310674	41P09F393	(100) BATTERY MINERAL RESOURCES LIMITED	WILLET
310675	41P09F297	(100) BATTERY MINERAL RESOURCES LIMITED	BARBER,WILLET
310690	41P09G281	(100) BATTERY MINERAL RESOURCES LIMITED	BARBER
310706	41P09F233	(100) BATTERY MINERAL RESOURCES LIMITED	WILLET
310711	41P09F378	(100) BATTERY MINERAL RESOURCES LIMITED	BARBER
310732	41P09F158	(100) BATTERY MINERAL RESOURCES LIMITED	BARBER
320694	41P09F216	(100) BATTERY MINERAL RESOURCES LIMITED	WILLET
320698	41P09G202	(100) BATTERY MINERAL RESOURCES LIMITED	BARBER
320699	41P09F240	(100) BATTERY MINERAL RESOURCES LIMITED	BARBER
322863	41P09F280	(100) BATTERY MINERAL RESOURCES LIMITED	BARBER
322891	41P09G103	(100) BATTERY MINERAL RESOURCES LIMITED	BARBER
322908	41P09F374	(100) BATTERY MINERAL RESOURCES LIMITED	WILLET
322910	41P09F318	(100) BATTERY MINERAL RESOURCES LIMITED	BARBER
323422	41P09G364	(100) BATTERY MINERAL RESOURCES LIMITED	BARBER
323423	41P09G384	(100) BATTERY MINERAL RESOURCES LIMITED	BARBER
323450	41P09F399	(100) BATTERY MINERAL RESOURCES LIMITED	BARBER
335332	41P16C365	(100) BATTERY MINERAL RESOURCES LIMITED	JAMES,SMYTH
335333	41P09K004	(100) BATTERY MINERAL RESOURCES LIMITED	JAMES
135968	41P09K399	(100) BATTERY MINERAL RESOURCES LIMITED	BARBER,TUDHOPE
151870	41P09F018	(100) BATTERY MINERAL RESOURCES LIMITED	BARBER
254627	41P09F019	(100) BATTERY MINERAL RESOURCES LIMITED	BARBER
272490	41P09K398	(100) BATTERY MINERAL RESOURCES LIMITED	BARBER,TUDHOPE
283768	41P09F020	(100) BATTERY MINERAL RESOURCES LIMITED	BARBER
291843	41P09J381	(100) BATTERY MINERAL RESOURCES LIMITED	BARBER,TUDHOPE
291844	41P09K400	(100) BATTERY MINERAL RESOURCES LIMITED	BARBER,TUDHOPE
331051	41P09G001	(100) BATTERY MINERAL RESOURCES LIMITED	BARBER
208048	41P09L152	(100) BATTERY MINERAL RESOURCES LIMITED	MICKLE
220118	41P09L153	(100) BATTERY MINERAL RESOURCES LIMITED	MICKLE
267284	41P09L133	(100) BATTERY MINERAL RESOURCES LIMITED	MICKLE
267285	41P09L132	(100) BATTERY MINERAL RESOURCES LIMITED	MICKLE
140384	41P09K004	(100) BATTERY MINERAL RESOURCES LIMITED	JAMES
140385	41P09K023	(100) BATTERY MINERAL RESOURCES LIMITED	JAMES
315134	41P09K024	(100) BATTERY MINERAL RESOURCES LIMITED	JAMES
327849	41P09K003	(100) BATTERY MINERAL RESOURCES LIMITED	JAMES
194821	41P09K236	(100) BATTERY MINERAL RESOURCES LIMITED	JAMES
213463	41P09K256	(100) BATTERY MINERAL RESOURCES LIMITED	JAMES
268931	41P09K257	(100) BATTERY MINERAL RESOURCES LIMITED	JAMES,TUDHOPE
280988	41P09K237	(100) BATTERY MINERAL RESOURCES LIMITED	JAMES,TUDHOPE
328080	41P09K255	(100) BATTERY MINERAL RESOURCES LIMITED	JAMES
339924	41P09K235	(100) BATTERY MINERAL RESOURCES LIMITED	JAMES
100592	41P09G167	(100) BATTERY MINERAL RESOURCES LIMITED	BARBER
100593	41P09G165	(100) BATTERY MINERAL RESOURCES LIMITED	BARBER
107675	41P09G369	(100) BATTERY MINERAL RESOURCES LIMITED	BARBER
107676	41P09G368	(100) BATTERY MINERAL RESOURCES LIMITED	BARBER
110012	41P09G391	(100) BATTERY MINERAL RESOURCES LIMITED	BARBER
124103	41P09G350	(100) BATTERY MINERAL RESOURCES LIMITED	BARBER
126214	41P09G166	(100) BATTERY MINERAL RESOURCES LIMITED	BARBER
128130	41P09G365	(100) BATTERY MINERAL RESOURCES LIMITED	BARBER
128131	41P09G388	(100) BATTERY MINERAL RESOURCES LIMITED	BARBER
128159	41P09G305	(100) BATTERY MINERAL RESOURCES LIMITED	BARBER
140172	41P09G347	(100) BATTERY MINERAL RESOURCES LIMITED	BARBER
140173	41P09G384	(100) BATTERY MINERAL RESOURCES LIMITED	BARBER
140190	41P09G308	(100) BATTERY MINERAL RESOURCES LIMITED	BARBER



Tenure ID	Cell ID(s)	Holder	Township / Area
142746	41P09G145	(100) BATTERY MINERAL RESOURCES LIMITED	BARBER
142747	41P09G144	(100) BATTERY MINERAL RESOURCES LIMITED	BARBER
144464	41P09G371	(100) BATTERY MINERAL RESOURCES LIMITED	BARBER
145633	41P09G387	(100) BATTERY MINERAL RESOURCES LIMITED	BARBER
155506	41P09G186	(100) BATTERY MINERAL RESOURCES LIMITED	BARBER
156806	41P09G125	(100) BATTERY MINERAL RESOURCES LIMITED	BARBER
172085	41P09G205	(100) BATTERY MINERAL RESOURCES LIMITED	BARBER
174208	41P09G366	(100) BATTERY MINERAL RESOURCES LIMITED	BARBER
188080	41P09G330	(100) BATTERY MINERAL RESOURCES LIMITED	BARBER
191081	41P09G372	(100) BATTERY MINERAL RESOURCES LIMITED	BARBER
191082	41P09G390	(100) BATTERY MINERAL RESOURCES LIMITED	BARBER
192180	41P09G364	(100) BATTERY MINERAL RESOURCES LIMITED	BARBER
200292	41P09G349	(100) BATTERY MINERAL RESOURCES LIMITED	BARBER
200826	41P09G164	(100) BATTERY MINERAL RESOURCES LIMITED	BARBER
200827	41P09G227	(100) BATTERY MINERAL RESOURCES LIMITED	BARBER
204280	41P09G367	(100) BATTERY MINERAL RESOURCES LIMITED	BARBER
208885	41P09G225	(100) BATTERY MINERAL RESOURCES LIMITED	BARBER
208886	41P09G224	(100) BATTERY MINERAL RESOURCES LIMITED	BARBER
210185	41P09G104	(100) BATTERY MINERAL RESOURCES LIMITED	BARBER
210924	41P09G345	(100) BATTERY MINERAL RESOURCES LIMITED	BARBER
210947	41P09G307	(100) BATTERY MINERAL RESOURCES LIMITED	BARBER
220944	41P09G226	(100) BATTERY MINERAL RESOURCES LIMITED	BARBER
222232	41P09G124	(100) BATTERY MINERAL RESOURCES LIMITED	BARBER
229465	41P09G344	(100) BATTERY MINERAL RESOURCES LIMITED	BARBER
239708	41P09G392	(100) BATTERY MINERAL RESOURCES LIMITED	BARBER
240855	41P09G304	(100) BATTERY MINERAL RESOURCES LIMITED	BARBER
240856	41P09G324	(100) BATTERY MINERAL RESOURCES LIMITED	BARBER
247789	41P09G389	(100) BATTERY MINERAL RESOURCES LIMITED	BARBER
248330	41P09G386	(100) BATTERY MINERAL RESOURCES LIMITED	BARBER
248331	41P09G385	(100) BATTERY MINERAL RESOURCES LIMITED	BARBER
248356	41P09G325	(100) BATTERY MINERAL RESOURCES LIMITED	BARBER
258203	41P09G084	(100) BATTERY MINERAL RESOURCES LIMITED	BARBER
258204	41P09G105	(100) BATTERY MINERAL RESOURCES LIMITED	BARBER
267456	41P09G185	(100) BATTERY MINERAL RESOURCES LIMITED	BARBER
267457	41P09G184	(100) BATTERY MINERAL RESOURCES LIMITED	BARBER
267458	41P09G204	(100) BATTERY MINERAL RESOURCES LIMITED	BARBER
267481	41P09G146	(100) BATTERY MINERAL RESOURCES LIMITED	BARBER
287532	41P09G187	(100) BATTERY MINERAL RESOURCES LIMITED	BARBER
294260	41P09G206	(100) BATTERY MINERAL RESOURCES LIMITED	BARBER
295483	41P09G306	(100) BATTERY MINERAL RESOURCES LIMITED	BARBER
295558	41P09G085	(100) BATTERY MINERAL RESOURCES LIMITED	BARBER
303568	41P09G348	(100) BATTERY MINERAL RESOURCES LIMITED	BARBER
310862	41P09G329	(100) BATTERY MINERAL RESOURCES LIMITED	BARBER
310863	41P09G328	(100) BATTERY MINERAL RESOURCES LIMITED	BARBER
311355	41P09G207	(100) BATTERY MINERAL RESOURCES LIMITED	BARBER
314895	41P09G346	(100) BATTERY MINERAL RESOURCES LIMITED	BARBER
314923	41P09G326	(100) BATTERY MINERAL RESOURCES LIMITED	BARBER
335792	41P09G327	(100) BATTERY MINERAL RESOURCES LIMITED	BARBER
191680	41P16D349	(100) BATTERY MINERAL RESOURCES LIMITED	FARR
211158	41P16D348	(100) BATTERY MINERAL RESOURCES LIMITED	FARR
103928	41P09L032	(100) BATTERY MINERAL RESOURCES LIMITED	MICKLE
165149	41P09L052	(100) BATTERY MINERAL RESOURCES LIMITED	MICKLE
303827	41P09L033	(100) BATTERY MINERAL RESOURCES LIMITED	MICKLE
100130	41P09K074	(100) BATTERY MINERAL RESOURCES LIMITED	JAMES
100131	41P09K094	(100) BATTERY MINERAL RESOURCES LIMITED	JAMES

Tenure ID	Cell ID(s)	Holder	Township / Area
100132	41P09K095	(100) BATTERY MINERAL RESOURCES LIMITED	JAMES
100133	41P09K134	(100) BATTERY MINERAL RESOURCES LIMITED	JAMES
125600	41P09K093	(100) BATTERY MINERAL RESOURCES LIMITED	JAMES
125648	41P16C369	(100) BATTERY MINERAL RESOURCES LIMITED	JAMES,SMYTH
142100	41P09K052	(100) BATTERY MINERAL RESOURCES LIMITED	JAMES
142101	41P09K051	(100) BATTERY MINERAL RESOURCES LIMITED	JAMES
142102	41P09K072	(100) BATTERY MINERAL RESOURCES LIMITED	JAMES
142156	41P16C368	(100) BATTERY MINERAL RESOURCES LIMITED	JAMES,SMYTH
142663	41P09K010	(100) BATTERY MINERAL RESOURCES LIMITED	JAMES
142664	41P09K009	(100) BATTERY MINERAL RESOURCES LIMITED	JAMES
142665	41P09K049	(100) BATTERY MINERAL RESOURCES LIMITED	JAMES
142692	41P09K136	(100) BATTERY MINERAL RESOURCES LIMITED	JAMES
154881	41P09K174	(100) BATTERY MINERAL RESOURCES LIMITED	JAMES
171490	41P09K194	(100) BATTERY MINERAL RESOURCES LIMITED	JAMES
200732	41P16C390	(100) BATTERY MINERAL RESOURCES LIMITED	JAMES
200733	41P09K008	(100) BATTERY MINERAL RESOURCES LIMITED	JAMES
200734	41P09K030	(100) BATTERY MINERAL RESOURCES LIMITED	JAMES
208221	41P09K053	(100) BATTERY MINERAL RESOURCES LIMITED	JAMES
208222	41P09K155	(100) BATTERY MINERAL RESOURCES LIMITED	JAMES
208223	41P09K154	(100) BATTERY MINERAL RESOURCES LIMITED	JAMES
220303	41P09K073	(100) BATTERY MINERAL RESOURCES LIMITED	JAMES
220304	41P09K071	(100) BATTERY MINERAL RESOURCES LIMITED	JAMES
220305	41P09K133	(100) BATTERY MINERAL RESOURCES LIMITED	JAMES
220306	41P09K175	(100) BATTERY MINERAL RESOURCES LIMITED	JAMES
220860	41P09K029	(100) BATTERY MINERAL RESOURCES LIMITED	JAMES
220861	41P09K195	(100) BATTERY MINERAL RESOURCES LIMITED	JAMES
227596	41P09K114	(100) BATTERY MINERAL RESOURCES LIMITED	JAMES
227597	41P09K173	(100) BATTERY MINERAL RESOURCES LIMITED	JAMES
267379	41P09K028	(100) BATTERY MINERAL RESOURCES LIMITED	JAMES
274841	41P09K156	(100) BATTERY MINERAL RESOURCES LIMITED	JAMES
286898	41P09K135	(100) BATTERY MINERAL RESOURCES LIMITED	JAMES
286944	41P16C388	(100) BATTERY MINERAL RESOURCES LIMITED	JAMES
302691	41P09K054	(100) BATTERY MINERAL RESOURCES LIMITED	JAMES
310712	41P09K115	(100) BATTERY MINERAL RESOURCES LIMITED	JAMES
310713	41P09K153	(100) BATTERY MINERAL RESOURCES LIMITED	JAMES
310763	41P16C389	(100) BATTERY MINERAL RESOURCES LIMITED	JAMES
323453	41P09K113	(100) BATTERY MINERAL RESOURCES LIMITED	JAMES
114983	41P09F058	(100) BATTERY MINERAL RESOURCES LIMITED	BARBER
114984	41P09G065	(100) BATTERY MINERAL RESOURCES LIMITED	BARBER
126981	41P09F059	(100) BATTERY MINERAL RESOURCES LIMITED	BARBER
144157	41P09F040	(100) BATTERY MINERAL RESOURCES LIMITED	BARBER
144158	41P09G063	(100) BATTERY MINERAL RESOURCES LIMITED	BARBER
144159	41P09F080	(100) BATTERY MINERAL RESOURCES LIMITED	BARBER
156779	41P09G062	(100) BATTERY MINERAL RESOURCES LIMITED	BARBER
162286	41P09G043	(100) BATTERY MINERAL RESOURCES LIMITED	BARBER
210158	41P09G024	(100) BATTERY MINERAL RESOURCES LIMITED	BARBER
210159	41P09G023	(100) BATTERY MINERAL RESOURCES LIMITED	BARBER
210160	41P09G021	(100) BATTERY MINERAL RESOURCES LIMITED	BARBER
222205	41P09G061	(100) BATTERY MINERAL RESOURCES LIMITED	BARBER
228983	41P09F060	(100) BATTERY MINERAL RESOURCES LIMITED	BARBER
228984	41P09G064	(100) BATTERY MINERAL RESOURCES LIMITED	BARBER
276164	41P09G044	(100) BATTERY MINERAL RESOURCES LIMITED	BARBER
276165	41P09G042	(100) BATTERY MINERAL RESOURCES LIMITED	BARBER
288278	41P09F039	(100) BATTERY MINERAL RESOURCES LIMITED	BARBER
295523	41P09F038	(100) BATTERY MINERAL RESOURCES LIMITED	BARBER

Tenure ID	Cell ID(s)	Holder	Township / Area
295524	41P09G041	(100) BATTERY MINERAL RESOURCES LIMITED	BARBER
312118	41P09F079	(100) BATTERY MINERAL RESOURCES LIMITED	BARBER
312119	41P09F078	(100) BATTERY MINERAL RESOURCES LIMITED	BARBER
107919	41P16D249	(40) SUNVEST MINERALS CORP. , (60) BATTERY MINERAL RESOURCES LIMITED	FARR
125369	41P16D268	(40) SUNVEST MINERALS CORP. , (60) BATTERY MINERAL RESOURCES LIMITED	FARR
132469	41P16D306	(40) SUNVEST MINERALS CORP. , (60) BATTERY MINERAL RESOURCES LIMITED	FARR
136867	41P16D288	(40) SUNVEST MINERALS CORP. , (60) BATTERY MINERAL RESOURCES LIMITED	FARR
145777	41P16D327	(40) SUNVEST MINERALS CORP. , (60) BATTERY MINERAL RESOURCES LIMITED	FARR
162806	41P16D348	(40) SUNVEST MINERALS CORP. , (60) BATTERY MINERAL RESOURCES LIMITED	FARR
178207	41P16D287	(40) SUNVEST MINERALS CORP. , (60) BATTERY MINERAL RESOURCES LIMITED	FARR
178208	41P16D307	(40) SUNVEST MINERALS CORP. , (60) BATTERY MINERAL RESOURCES LIMITED	FARR
182074	41P16D269	(40) SUNVEST MINERALS CORP. , (60) BATTERY MINERAL RESOURCES LIMITED	FARR
188857	41P16D267	(40) SUNVEST MINERALS CORP. , (60) BATTERY MINERAL RESOURCES LIMITED	FARR
212515	41P16D286	(40) SUNVEST MINERALS CORP. , (60) BATTERY MINERAL RESOURCES LIMITED	FARR
222698	41P16D346	(40) SUNVEST MINERALS CORP. , (60) BATTERY MINERAL RESOURCES LIMITED	FARR
247201	41P16D326	(40) SUNVEST MINERALS CORP. , (60) BATTERY MINERAL RESOURCES LIMITED	FARR
256151	41P16D248	(40) SUNVEST MINERALS CORP. , (60) BATTERY MINERAL RESOURCES LIMITED	FARR
264425	41P16D308	(40) SUNVEST MINERALS CORP. , (60) BATTERY MINERAL RESOURCES LIMITED	FARR
284661	41P16D247	(40) SUNVEST MINERALS CORP. , (60) BATTERY MINERAL RESOURCES LIMITED	FARR
311608	41P16D289	(40) SUNVEST MINERALS CORP. , (60) BATTERY MINERAL RESOURCES LIMITED	FARR
325984	41P16D347	(40) SUNVEST MINERALS CORP. , (60) BATTERY MINERAL RESOURCES LIMITED	FARR
336498	41P16D328	(40) SUNVEST MINERALS CORP. , (60) BATTERY MINERAL RESOURCES LIMITED	FARR
241926	41P09L074	(100) BATTERY MINERAL RESOURCES LIMITED	MICKLE
241927	41P09L072	(100) BATTERY MINERAL RESOURCES LIMITED	MICKLE
246495	41P09L053	(100) BATTERY MINERAL RESOURCES LIMITED	MICKLE
325050	41P09L073	(100) BATTERY MINERAL RESOURCES LIMITED	MICKLE
200550	41P16D388	(100) BATTERY MINERAL RESOURCES LIMITED	MICKLE
220139	41P16D389	(100) BATTERY MINERAL RESOURCES LIMITED	MICKLE
307626	41P16D368	(100) BATTERY MINERAL RESOURCES LIMITED	FARR,MICKLE
335278	41P16D369	(100) BATTERY MINERAL RESOURCES LIMITED	FARR,MICKLE
176943	41P09L109	(100) BATTERY MINERAL RESOURCES LIMITED	MICKLE
338590	41P09L089	(100) BATTERY MINERAL RESOURCES LIMITED	MICKLE
103919	41P09L109	(100) BATTERY MINERAL RESOURCES LIMITED	MICKLE
111223	41P09L128	(100) BATTERY MINERAL RESOURCES LIMITED	MICKLE
111224	41P09L150	(100) BATTERY MINERAL RESOURCES LIMITED	MICKLE
112808	41P09L090	(100) BATTERY MINERAL RESOURCES LIMITED	MICKLE
137894	41P09L151	(100) BATTERY MINERAL RESOURCES LIMITED	MICKLE

Tenure ID	Cell ID(s)	Holder	Township / Area
152679	41P09L149	(100) BATTERY MINERAL RESOURCES LIMITED	MICKLE
159033	41P09L129	(100) BATTERY MINERAL RESOURCES LIMITED	MICKLE
186442	41P09L148	(100) BATTERY MINERAL RESOURCES LIMITED	MICKLE
205293	41P09L108	(100) BATTERY MINERAL RESOURCES LIMITED	MICKLE
206720	41P09L131	(100) BATTERY MINERAL RESOURCES LIMITED	MICKLE
246434	41P09L091	(100) BATTERY MINERAL RESOURCES LIMITED	MICKLE
261754	41P09L110	(100) BATTERY MINERAL RESOURCES LIMITED	MICKLE
280396	41P09L130	(100) BATTERY MINERAL RESOURCES LIMITED	MICKLE
320421	41P09L111	(100) BATTERY MINERAL RESOURCES LIMITED	MICKLE
145923	41P16D288	(100) BATTERY MINERAL RESOURCES LIMITED	FARR
145924	41P16D309	(100) BATTERY MINERAL RESOURCES LIMITED	FARR
230832	41P16D289	(100) BATTERY MINERAL RESOURCES LIMITED	FARR
230833	41P16D308	(100) BATTERY MINERAL RESOURCES LIMITED	FARR
109235	41P16D390	(100) BATTERY MINERAL RESOURCES LIMITED	MICKLE
132359	41P16D389	(100) BATTERY MINERAL RESOURCES LIMITED	MICKLE
185005	41P09L009	(100) BATTERY MINERAL RESOURCES LIMITED	MICKLE
197874	41P09L029	(100) BATTERY MINERAL RESOURCES LIMITED	MICKLE
217231	41P09L010	(100) BATTERY MINERAL RESOURCES LIMITED	MICKLE
235752	41P09L030	(100) BATTERY MINERAL RESOURCES LIMITED	MICKLE
127037	41P16C399	(100) BATTERY MINERAL RESOURCES LIMITED	TUDHOPE
169656	41P09K137	(100) BATTERY MINERAL RESOURCES LIMITED	JAMES,TUDHOPE
100684	41P09K268	(100) BATTERY MINERAL RESOURCES LIMITED	JAMES
100685	41P09K330	(100) BATTERY MINERAL RESOURCES LIMITED	JAMES
101872	41P09K254	(100) BATTERY MINERAL RESOURCES LIMITED	JAMES
102150	41P09K211	(100) BATTERY MINERAL RESOURCES LIMITED	JAMES
104298	41P09F037	(100) BATTERY MINERAL RESOURCES LIMITED	BARBER,WILLET
104581	41P09K390	(100) BATTERY MINERAL RESOURCES LIMITED	JAMES,WILLET
110339	41P09K210	(100) BATTERY MINERAL RESOURCES LIMITED	JAMES
110340	41P09K230	(100) BATTERY MINERAL RESOURCES LIMITED	JAMES
113150	41P09F051	(100) BATTERY MINERAL RESOURCES LIMITED	WILLET
114819	41P09K315	(100) BATTERY MINERAL RESOURCES LIMITED	JAMES
114820	41P09K355	(100) BATTERY MINERAL RESOURCES LIMITED	JAMES
114842	41P09K331	(100) BATTERY MINERAL RESOURCES LIMITED	JAMES
116048	41P09K354	(100) BATTERY MINERAL RESOURCES LIMITED	JAMES
117194	41P09K274	(100) BATTERY MINERAL RESOURCES LIMITED	JAMES
117195	41P09K292	(100) BATTERY MINERAL RESOURCES LIMITED	JAMES
117270	41P09K397	(100) BATTERY MINERAL RESOURCES LIMITED	BARBER,JAMES,TUDHOPE,WILLET
121951	41P09F018	(100) BATTERY MINERAL RESOURCES LIMITED	BARBER
121952	41P09F017	(100) BATTERY MINERAL RESOURCES LIMITED	BARBER,WILLET
126271	41P09K396	(100) BATTERY MINERAL RESOURCES LIMITED	JAMES,WILLET
126272	41P09K395	(100) BATTERY MINERAL RESOURCES LIMITED	JAMES,WILLET
126283	41P09K289	(100) BATTERY MINERAL RESOURCES LIMITED	JAMES
129562	41P09K352	(100) BATTERY MINERAL RESOURCES LIMITED	JAMES
129563	41P09K372	(100) BATTERY MINERAL RESOURCES LIMITED	JAMES
129656	41P09K212	(100) BATTERY MINERAL RESOURCES LIMITED	JAMES
129657	41P09K234	(100) BATTERY MINERAL RESOURCES LIMITED	JAMES
132535	41P09F036	(100) BATTERY MINERAL RESOURCES LIMITED	WILLET
135905	41P09F012	(100) BATTERY MINERAL RESOURCES LIMITED	WILLET
135906	41P09F052	(100) BATTERY MINERAL RESOURCES LIMITED	WILLET
141867	41P09F034	(100) BATTERY MINERAL RESOURCES LIMITED	WILLET
142799	41P09K296	(100) BATTERY MINERAL RESOURCES LIMITED	JAMES
142816	41P09K271	(100) BATTERY MINERAL RESOURCES LIMITED	JAMES
142817	41P09K270	(100) BATTERY MINERAL RESOURCES LIMITED	JAMES
142818	41P09K288	(100) BATTERY MINERAL RESOURCES LIMITED	JAMES
145400	41P09K312	(100) BATTERY MINERAL RESOURCES LIMITED	JAMES

Tenure ID	Cell ID(s)	Holder	Township / Area
152617	41P09F055	(100) BATTERY MINERAL RESOURCES LIMITED	WILLET
152618	41P09F077	(100) BATTERY MINERAL RESOURCES LIMITED	BARBER,WILLET
155586	41P09K290	(100) BATTERY MINERAL RESOURCES LIMITED	JAMES
155961	41P09F054	(100) BATTERY MINERAL RESOURCES LIMITED	WILLET
155962	41P09F053	(100) BATTERY MINERAL RESOURCES LIMITED	WILLET
158206	41P09K338	(100) BATTERY MINERAL RESOURCES LIMITED	TUDHOPE
158207	41P09K358	(100) BATTERY MINERAL RESOURCES LIMITED	TUDHOPE
163650	41P09K252	(100) BATTERY MINERAL RESOURCES LIMITED	JAMES
163651	41P09K334	(100) BATTERY MINERAL RESOURCES LIMITED	JAMES
164846	41P09K393	(100) BATTERY MINERAL RESOURCES LIMITED	JAMES,WILLET
164929	41P09K233	(100) BATTERY MINERAL RESOURCES LIMITED	JAMES
167293	41P09F076	(100) BATTERY MINERAL RESOURCES LIMITED	WILLET
167312	41P09F095	(100) BATTERY MINERAL RESOURCES LIMITED	WILLET
170615	41P09F015	(100) BATTERY MINERAL RESOURCES LIMITED	WILLET
172156	41P09K297	(100) BATTERY MINERAL RESOURCES LIMITED	JAMES,TUDHOPE
177657	41P09K373	(100) BATTERY MINERAL RESOURCES LIMITED	JAMES
177769	41P09K191	(100) BATTERY MINERAL RESOURCES LIMITED	JAMES
186386	41P09F058	(100) BATTERY MINERAL RESOURCES LIMITED	BARBER
188246	41P09K189	(100) BATTERY MINERAL RESOURCES LIMITED	JAMES
188247	41P09K229	(100) BATTERY MINERAL RESOURCES LIMITED	JAMES
193186	41P09K349	(100) BATTERY MINERAL RESOURCES LIMITED	JAMES
193187	41P09K370	(100) BATTERY MINERAL RESOURCES LIMITED	JAMES
193188	41P09K368	(100) BATTERY MINERAL RESOURCES LIMITED	JAMES
194181	41P09K231	(100) BATTERY MINERAL RESOURCES LIMITED	JAMES
201397	41P09K316	(100) BATTERY MINERAL RESOURCES LIMITED	JAMES
203442	41P09K253	(100) BATTERY MINERAL RESOURCES LIMITED	JAMES
203443	41P09K293	(100) BATTERY MINERAL RESOURCES LIMITED	JAMES
203444	41P09K333	(100) BATTERY MINERAL RESOURCES LIMITED	JAMES
204132	41P09K392	(100) BATTERY MINERAL RESOURCES LIMITED	JAMES,WILLET
204133	41P09K391	(100) BATTERY MINERAL RESOURCES LIMITED	JAMES,WILLET
205235	41P09F097	(100) BATTERY MINERAL RESOURCES LIMITED	BARBER,WILLET
207773	41P09K188	(100) BATTERY MINERAL RESOURCES LIMITED	JAMES
208596	41P09F014	(100) BATTERY MINERAL RESOURCES LIMITED	WILLET
208597	41P09F011	(100) BATTERY MINERAL RESOURCES LIMITED	WILLET
209451	41P09K295	(100) BATTERY MINERAL RESOURCES LIMITED	JAMES
209471	41P09K309	(100) BATTERY MINERAL RESOURCES LIMITED	JAMES
211532	41P09K313	(100) BATTERY MINERAL RESOURCES LIMITED	JAMES
221528	41P09K376	(100) BATTERY MINERAL RESOURCES LIMITED	JAMES
221542	41P09K310	(100) BATTERY MINERAL RESOURCES LIMITED	JAMES
223070	41P09K369	(100) BATTERY MINERAL RESOURCES LIMITED	JAMES
224247	41P09K353	(100) BATTERY MINERAL RESOURCES LIMITED	JAMES
230336	41P09K294	(100) BATTERY MINERAL RESOURCES LIMITED	JAMES
231025	41P09K350	(100) BATTERY MINERAL RESOURCES LIMITED	JAMES
231026	41P09K388	(100) BATTERY MINERAL RESOURCES LIMITED	JAMES,WILLET
231529	41P09K374	(100) BATTERY MINERAL RESOURCES LIMITED	JAMES
231530	41P09K394	(100) BATTERY MINERAL RESOURCES LIMITED	JAMES,WILLET
231644	41P09K214	(100) BATTERY MINERAL RESOURCES LIMITED	JAMES
243241	41P09K348	(100) BATTERY MINERAL RESOURCES LIMITED	JAMES
243242	41P09K389	(100) BATTERY MINERAL RESOURCES LIMITED	JAMES,WILLET
244446	41P09F035	(100) BATTERY MINERAL RESOURCES LIMITED	WILLET
244447	41P09F056	(100) BATTERY MINERAL RESOURCES LIMITED	WILLET
244448	41P09F096	(100) BATTERY MINERAL RESOURCES LIMITED	WILLET
252631	41P09F038	(100) BATTERY MINERAL RESOURCES LIMITED	BARBER
255068	41P09K208	(100) BATTERY MINERAL RESOURCES LIMITED	JAMES
255069	41P09K249	(100) BATTERY MINERAL RESOURCES LIMITED	JAMES

Tenure ID	Cell ID(s)	Holder	Township / Area
257499	41P09K251	(100) BATTERY MINERAL RESOURCES LIMITED	JAMES
259522	41P09K314	(100) BATTERY MINERAL RESOURCES LIMITED	JAMES
260188	41P09K371	(100) BATTERY MINERAL RESOURCES LIMITED	JAMES
267055	41P09K250	(100) BATTERY MINERAL RESOURCES LIMITED	JAMES
268308	41P09K193	(100) BATTERY MINERAL RESOURCES LIMITED	JAMES
271231	41P09F057	(100) BATTERY MINERAL RESOURCES LIMITED	BARBER, WILLET
274596	41P09F013	(100) BATTERY MINERAL RESOURCES LIMITED	WILLET
275486	41P09K275	(100) BATTERY MINERAL RESOURCES LIMITED	JAMES
275487	41P09K357	(100) BATTERY MINERAL RESOURCES LIMITED	JAMES, TUDHOPE
275488	41P09K377	(100) BATTERY MINERAL RESOURCES LIMITED	JAMES, TUDHOPE
275511	41P09K329	(100) BATTERY MINERAL RESOURCES LIMITED	JAMES
278140	41P09K378	(100) BATTERY MINERAL RESOURCES LIMITED	TUDHOPE
279584	41P09K272	(100) BATTERY MINERAL RESOURCES LIMITED	JAMES
279585	41P09K332	(100) BATTERY MINERAL RESOURCES LIMITED	JAMES
279657	41P09K398	(100) BATTERY MINERAL RESOURCES LIMITED	BARBER, TUDHOPE
287594	41P09K337	(100) BATTERY MINERAL RESOURCES LIMITED	JAMES, TUDHOPE
292247	41P09K190	(100) BATTERY MINERAL RESOURCES LIMITED	JAMES
292248	41P09K228	(100) BATTERY MINERAL RESOURCES LIMITED	JAMES
292249	41P09K248	(100) BATTERY MINERAL RESOURCES LIMITED	JAMES
294336	41P09K336	(100) BATTERY MINERAL RESOURCES LIMITED	JAMES
294337	41P09K335	(100) BATTERY MINERAL RESOURCES LIMITED	JAMES
294338	41P09K356	(100) BATTERY MINERAL RESOURCES LIMITED	JAMES
294853	41P09K269	(100) BATTERY MINERAL RESOURCES LIMITED	JAMES
294854	41P09K291	(100) BATTERY MINERAL RESOURCES LIMITED	JAMES
294855	41P09K311	(100) BATTERY MINERAL RESOURCES LIMITED	JAMES
311003	41P09K209	(100) BATTERY MINERAL RESOURCES LIMITED	JAMES
311193	41P09F031	(100) BATTERY MINERAL RESOURCES LIMITED	WILLET
311417	41P09K276	(100) BATTERY MINERAL RESOURCES LIMITED	JAMES
311418	41P09K375	(100) BATTERY MINERAL RESOURCES LIMITED	JAMES
311439	41P09K308	(100) BATTERY MINERAL RESOURCES LIMITED	JAMES
312707	41P09K318	(100) BATTERY MINERAL RESOURCES LIMITED	TUDHOPE
314763	41P09K192	(100) BATTERY MINERAL RESOURCES LIMITED	JAMES
318461	41P09F075	(100) BATTERY MINERAL RESOURCES LIMITED	WILLET
323907	41P09F033	(100) BATTERY MINERAL RESOURCES LIMITED	WILLET
324140	41P09K317	(100) BATTERY MINERAL RESOURCES LIMITED	JAMES, TUDHOPE
324158	41P09K328	(100) BATTERY MINERAL RESOURCES LIMITED	JAMES
326164	41P09K273	(100) BATTERY MINERAL RESOURCES LIMITED	JAMES
326305	41P09K351	(100) BATTERY MINERAL RESOURCES LIMITED	JAMES
327462	41P09K213	(100) BATTERY MINERAL RESOURCES LIMITED	JAMES
327463	41P09K232	(100) BATTERY MINERAL RESOURCES LIMITED	JAMES
102667	41P09K136	(100) BATTERY MINERAL RESOURCES LIMITED	JAMES
102802	41P09K036	(100) BATTERY MINERAL RESOURCES LIMITED	JAMES, TUDHOPE
180942	41P09K013	(100) BATTERY MINERAL RESOURCES LIMITED	JAMES
183095	41P09K014	(100) BATTERY MINERAL RESOURCES LIMITED	JAMES
188912	41P16C393	(100) BATTERY MINERAL RESOURCES LIMITED	JAMES
188913	41P09K012	(100) BATTERY MINERAL RESOURCES LIMITED	JAMES
229483	41P16C392	(100) BATTERY MINERAL RESOURCES LIMITED	JAMES
273810	41P16C373	(100) BATTERY MINERAL RESOURCES LIMITED	JAMES, SMYTH
285735	41P09K035	(100) BATTERY MINERAL RESOURCES LIMITED	JAMES
285736	41P09K034	(100) BATTERY MINERAL RESOURCES LIMITED	JAMES
305357	41P09K135	(100) BATTERY MINERAL RESOURCES LIMITED	JAMES
308201	41P16C372	(100) BATTERY MINERAL RESOURCES LIMITED	JAMES, SMYTH
311127	41P16C394	(100) BATTERY MINERAL RESOURCES LIMITED	JAMES
343093	41P16C374	(100) BATTERY MINERAL RESOURCES LIMITED	JAMES, SMYTH
110186	41P09J024	(100) BATTERY MINERAL RESOURCES LIMITED	TUDHOPE

Tenure ID	Cell ID(s)	Holder	Township / Area
122194	41P09J004	(100) BATTERY MINERAL RESOURCES LIMITED	TUDHOPE
180151	41P09J005	(100) BATTERY MINERAL RESOURCES LIMITED	TUDHOPE
206433	41P16B383	(100) BATTERY MINERAL RESOURCES LIMITED	TUDHOPE
266413	41P16B384	(100) BATTERY MINERAL RESOURCES LIMITED	TUDHOPE
266414	41P09J025	(100) BATTERY MINERAL RESOURCES LIMITED	TUDHOPE
290926	41P16B385	(100) BATTERY MINERAL RESOURCES LIMITED	TUDHOPE
341783	41P16B365	(100) BATTERY MINERAL RESOURCES LIMITED	TRUAX,TUDHOPE
112450	41P09L091	(100) BATTERY MINERAL RESOURCES LIMITED	MICKLE
135902	41P09L112	(100) BATTERY MINERAL RESOURCES LIMITED	MICKLE
137896	41P09L071	(100) BATTERY MINERAL RESOURCES LIMITED	MICKLE
143860	41P09L072	(100) BATTERY MINERAL RESOURCES LIMITED	MICKLE
162714	41P09L092	(100) BATTERY MINERAL RESOURCES LIMITED	MICKLE
192069	41P09L111	(100) BATTERY MINERAL RESOURCES LIMITED	MICKLE
275370	41P09L090	(100) BATTERY MINERAL RESOURCES LIMITED	MICKLE
310406	41P09L070	(100) BATTERY MINERAL RESOURCES LIMITED	MICKLE
108592	41P09L048	(100) BATTERY MINERAL RESOURCES LIMITED	MICKLE
133042	41P09L088	(100) BATTERY MINERAL RESOURCES LIMITED	MICKLE
150226	41P09L049	(100) BATTERY MINERAL RESOURCES LIMITED	MICKLE
155976	41P09L128	(100) BATTERY MINERAL RESOURCES LIMITED	MICKLE
185683	41P09L068	(100) BATTERY MINERAL RESOURCES LIMITED	MICKLE
197838	41P09L067	(100) BATTERY MINERAL RESOURCES LIMITED	MICKLE
237192	41P09L109	(100) BATTERY MINERAL RESOURCES LIMITED	MICKLE
253002	41P09L069	(100) BATTERY MINERAL RESOURCES LIMITED	MICKLE
274616	41P09L108	(100) BATTERY MINERAL RESOURCES LIMITED	MICKLE
274617	41P09L148	(100) BATTERY MINERAL RESOURCES LIMITED	MICKLE
282180	41P09L089	(100) BATTERY MINERAL RESOURCES LIMITED	MICKLE
340386	41P09L047	(100) BATTERY MINERAL RESOURCES LIMITED	MICKLE
340387	41P09L087	(100) BATTERY MINERAL RESOURCES LIMITED	MICKLE
102899	41P09K079	(100) BATTERY MINERAL RESOURCES LIMITED	TUDHOPE
118211	41P09K098	(100) BATTERY MINERAL RESOURCES LIMITED	TUDHOPE
125746	41P09K099	(100) BATTERY MINERAL RESOURCES LIMITED	TUDHOPE
153720	41P09J082	(100) BATTERY MINERAL RESOURCES LIMITED	TUDHOPE
183177	41P09J081	(100) BATTERY MINERAL RESOURCES LIMITED	TUDHOPE
189138	41P09J061	(100) BATTERY MINERAL RESOURCES LIMITED	TUDHOPE
201006	41P09K057	(100) BATTERY MINERAL RESOURCES LIMITED	JAMES,TUDHOPE
214696	41P09L050	(100) BATTERY MINERAL RESOURCES LIMITED	MICKLE
217232	41P09L031	(100) BATTERY MINERAL RESOURCES LIMITED	MICKLE
219070	41P09J062	(100) BATTERY MINERAL RESOURCES LIMITED	TUDHOPE
237472	41P09K077	(100) BATTERY MINERAL RESOURCES LIMITED	JAMES,TUDHOPE
254060	41P09L011	(100) BATTERY MINERAL RESOURCES LIMITED	MICKLE
322374	41P09K080	(100) BATTERY MINERAL RESOURCES LIMITED	TUDHOPE
332562	41P09L049	(100) BATTERY MINERAL RESOURCES LIMITED	MICKLE
345263	41P09K078	(100) BATTERY MINERAL RESOURCES LIMITED	TUDHOPE
345264	41P09K100	(100) BATTERY MINERAL RESOURCES LIMITED	TUDHOPE
107380	41P09K071	(100) BATTERY MINERAL RESOURCES LIMITED	JAMES
139534	41P09K069	(100) BATTERY MINERAL RESOURCES LIMITED	JAMES
210294	41P09K030	(100) BATTERY MINERAL RESOURCES LIMITED	JAMES
240196	41P09K029	(100) BATTERY MINERAL RESOURCES LIMITED	JAMES
240197	41P09K049	(100) BATTERY MINERAL RESOURCES LIMITED	JAMES
247689	41P09K051	(100) BATTERY MINERAL RESOURCES LIMITED	JAMES
287315	41P09K050	(100) BATTERY MINERAL RESOURCES LIMITED	JAMES
295339	41P09K070	(100) BATTERY MINERAL RESOURCES LIMITED	JAMES
314243	41P09K031	(100) BATTERY MINERAL RESOURCES LIMITED	JAMES
186030	41P09J023	(100) BATTERY MINERAL RESOURCES LIMITED	TUDHOPE
233856	41P09J043	(100) BATTERY MINERAL RESOURCES LIMITED	TUDHOPE

Tenure ID	Cell ID(s)	Holder	Township / Area
289894	41P09J003	(100) BATTERY MINERAL RESOURCES LIMITED	TUDHOPE
312490	41P09L110	(100) BATTERY MINERAL RESOURCES LIMITED	MICKLE
110253	41P09L137	(100) BATTERY MINERAL RESOURCES LIMITED	JAMES
133891	41P09L174	(100) BATTERY MINERAL RESOURCES LIMITED	MICKLE
135046	41P09L156	(100) BATTERY MINERAL RESOURCES LIMITED	JAMES,MICKLE
138504	41P09L009	(100) BATTERY MINERAL RESOURCES LIMITED	MICKLE
138505	41P09L049	(100) BATTERY MINERAL RESOURCES LIMITED	MICKLE
143940	41P16D388	(100) BATTERY MINERAL RESOURCES LIMITED	MICKLE
158002	41P16D387	(100) BATTERY MINERAL RESOURCES LIMITED	MICKLE
158003	41P09L028	(100) BATTERY MINERAL RESOURCES LIMITED	MICKLE
158004	41P09L027	(100) BATTERY MINERAL RESOURCES LIMITED	MICKLE
161993	41P09L117	(100) BATTERY MINERAL RESOURCES LIMITED	JAMES
173340	41P09K043	(100) BATTERY MINERAL RESOURCES LIMITED	JAMES
180215	41P09L138	(100) BATTERY MINERAL RESOURCES LIMITED	JAMES
185733	41P09L175	(100) BATTERY MINERAL RESOURCES LIMITED	MICKLE
186424	41P09L096	(100) BATTERY MINERAL RESOURCES LIMITED	JAMES,MICKLE
186425	41P09L115	(100) BATTERY MINERAL RESOURCES LIMITED	MICKLE
193802	41P09K024	(100) BATTERY MINERAL RESOURCES LIMITED	JAMES
196101	41P09L097	(100) BATTERY MINERAL RESOURCES LIMITED	JAMES
202631	41P09L048	(100) BATTERY MINERAL RESOURCES LIMITED	MICKLE
214647	41P09L118	(100) BATTERY MINERAL RESOURCES LIMITED	JAMES
214694	41P09L119	(100) BATTERY MINERAL RESOURCES LIMITED	JAMES
219969	41P09K044	(100) BATTERY MINERAL RESOURCES LIMITED	JAMES
219970	41P09K083	(100) BATTERY MINERAL RESOURCES LIMITED	JAMES
244483	41P09L135	(100) BATTERY MINERAL RESOURCES LIMITED	MICKLE
245013	41P09L140	(100) BATTERY MINERAL RESOURCES LIMITED	JAMES
254995	41P09L136	(100) BATTERY MINERAL RESOURCES LIMITED	JAMES,MICKLE
258672	41P09L007	(100) BATTERY MINERAL RESOURCES LIMITED	MICKLE
262095	41P09L098	(100) BATTERY MINERAL RESOURCES LIMITED	JAMES
264539	41P09L095	(100) BATTERY MINERAL RESOURCES LIMITED	MICKLE
264540	41P09L116	(100) BATTERY MINERAL RESOURCES LIMITED	JAMES,MICKLE
271304	41P09K141	(100) BATTERY MINERAL RESOURCES LIMITED	JAMES
272596	41P09L154	(100) BATTERY MINERAL RESOURCES LIMITED	MICKLE
292167	41P09L158	(100) BATTERY MINERAL RESOURCES LIMITED	JAMES
303057	41P09L139	(100) BATTERY MINERAL RESOURCES LIMITED	JAMES
303058	41P09L159	(100) BATTERY MINERAL RESOURCES LIMITED	JAMES
306449	41P09L047	(100) BATTERY MINERAL RESOURCES LIMITED	MICKLE
310403	41P09L157	(100) BATTERY MINERAL RESOURCES LIMITED	JAMES
313239	41P09L029	(100) BATTERY MINERAL RESOURCES LIMITED	MICKLE
325986	41P09L008	(100) BATTERY MINERAL RESOURCES LIMITED	MICKLE
331208	41P09L155	(100) BATTERY MINERAL RESOURCES LIMITED	MICKLE
331235	41P09K121	(100) BATTERY MINERAL RESOURCES LIMITED	JAMES
331236	41P09L160	(100) BATTERY MINERAL RESOURCES LIMITED	JAMES
334847	41P09K064	(100) BATTERY MINERAL RESOURCES LIMITED	JAMES
334848	41P09K063	(100) BATTERY MINERAL RESOURCES LIMITED	JAMES
334849	41P09K084	(100) BATTERY MINERAL RESOURCES LIMITED	JAMES
108823	41P16B364	(100) BATTERY MINERAL RESOURCES LIMITED	TRUAX,TUDHOPE
186921	41P16B343	(100) BATTERY MINERAL RESOURCES LIMITED	TRUAX
245662	41P16B344	(100) BATTERY MINERAL RESOURCES LIMITED	TRUAX
265726	41P16B363	(100) BATTERY MINERAL RESOURCES LIMITED	TRUAX,TUDHOPE
103397	41P09L134	(100) BATTERY MINERAL RESOURCES LIMITED	MICKLE
103398	41P09L133	(100) BATTERY MINERAL RESOURCES LIMITED	MICKLE
112835	41P09L152	(100) BATTERY MINERAL RESOURCES LIMITED	MICKLE
119030	41P09L115	(100) BATTERY MINERAL RESOURCES LIMITED	MICKLE
119031	41P09L114	(100) BATTERY MINERAL RESOURCES LIMITED	MICKLE



Tenure ID	Cell ID(s)	Holder	Township / Area
123605	41P09L190	(100) BATTERY MINERAL RESOURCES LIMITED	MICKLE
134340	41P09L171	(100) BATTERY MINERAL RESOURCES LIMITED	MICKLE
158355	41P09L112	(100) BATTERY MINERAL RESOURCES LIMITED	MICKLE
164469	41P09L073	(100) BATTERY MINERAL RESOURCES LIMITED	MICKLE
164470	41P09L095	(100) BATTERY MINERAL RESOURCES LIMITED	MICKLE
164471	41P09L113	(100) BATTERY MINERAL RESOURCES LIMITED	MICKLE
187192	41P09L148	(100) BATTERY MINERAL RESOURCES LIMITED	MICKLE
187742	41P09L194	(100) BATTERY MINERAL RESOURCES LIMITED	MICKLE
198548	41P09L149	(100) BATTERY MINERAL RESOURCES LIMITED	MICKLE
206479	41P09L170	(100) BATTERY MINERAL RESOURCES LIMITED	MICKLE
206480	41P09L191	(100) BATTERY MINERAL RESOURCES LIMITED	MICKLE
207253	41P09L153	(100) BATTERY MINERAL RESOURCES LIMITED	MICKLE
231695	41P09L074	(100) BATTERY MINERAL RESOURCES LIMITED	MICKLE
231696	41P09L072	(100) BATTERY MINERAL RESOURCES LIMITED	MICKLE
231697	41P09L094	(100) BATTERY MINERAL RESOURCES LIMITED	MICKLE
231698	41P09L135	(100) BATTERY MINERAL RESOURCES LIMITED	MICKLE
243907	41P09L155	(100) BATTERY MINERAL RESOURCES LIMITED	MICKLE
265802	41P09L151	(100) BATTERY MINERAL RESOURCES LIMITED	MICKLE
265994	41P09L172	(100) BATTERY MINERAL RESOURCES LIMITED	MICKLE
273240	41P09L174	(100) BATTERY MINERAL RESOURCES LIMITED	MICKLE
273241	41P09L193	(100) BATTERY MINERAL RESOURCES LIMITED	MICKLE
279735	41P09L092	(100) BATTERY MINERAL RESOURCES LIMITED	MICKLE
298364	41P09L075	(100) BATTERY MINERAL RESOURCES LIMITED	MICKLE
302359	41P09L150	(100) BATTERY MINERAL RESOURCES LIMITED	MICKLE
302405	41P09L168	(100) BATTERY MINERAL RESOURCES LIMITED	MICKLE
319738	41P09L169	(100) BATTERY MINERAL RESOURCES LIMITED	MICKLE
333685	41P09L173	(100) BATTERY MINERAL RESOURCES LIMITED	MICKLE
333686	41P09L192	(100) BATTERY MINERAL RESOURCES LIMITED	MICKLE
339383	41P09L093	(100) BATTERY MINERAL RESOURCES LIMITED	MICKLE
339384	41P09L154	(100) BATTERY MINERAL RESOURCES LIMITED	MICKLE
109895	41P16D124	(100) BATTERY MINERAL RESOURCES LIMITED	FARR
109896	41P16D185	(100) BATTERY MINERAL RESOURCES LIMITED	FARR
111527	41P16D223	(100) BATTERY MINERAL RESOURCES LIMITED	FARR
130512	41P16D264	(100) BATTERY MINERAL RESOURCES LIMITED	FARR
131066	41P16D224	(100) BATTERY MINERAL RESOURCES LIMITED	FARR
131325	41P16D283	(100) BATTERY MINERAL RESOURCES LIMITED	FARR
135069	41P16D226	(100) BATTERY MINERAL RESOURCES LIMITED	FARR
141141	41P16D227	(100) BATTERY MINERAL RESOURCES LIMITED	FARR
144343	41P16D125	(100) BATTERY MINERAL RESOURCES LIMITED	FARR
144344	41P16D146	(100) BATTERY MINERAL RESOURCES LIMITED	FARR
144345	41P16D144	(100) BATTERY MINERAL RESOURCES LIMITED	FARR
147086	41P16D245	(100) BATTERY MINERAL RESOURCES LIMITED	FARR
147140	41P16D205	(100) BATTERY MINERAL RESOURCES LIMITED	FARR
147914	41P16D263	(100) BATTERY MINERAL RESOURCES LIMITED	FARR
147915	41P16D286	(100) BATTERY MINERAL RESOURCES LIMITED	FARR
158466	41P16D106	(100) BATTERY MINERAL RESOURCES LIMITED	FARR
158467	41P16D143	(100) BATTERY MINERAL RESOURCES LIMITED	FARR
161232	41P16D203	(100) BATTERY MINERAL RESOURCES LIMITED	FARR
161312	41P16D369	(100) BATTERY MINERAL RESOURCES LIMITED	FARR,MICKLE
166142	41P16D368	(100) BATTERY MINERAL RESOURCES LIMITED	FARR,MICKLE
172907	41P16D165	(100) BATTERY MINERAL RESOURCES LIMITED	FARR
172908	41P16D164	(100) BATTERY MINERAL RESOURCES LIMITED	FARR
176353	41P16D266	(100) BATTERY MINERAL RESOURCES LIMITED	FARR
176411	41P16D222	(100) BATTERY MINERAL RESOURCES LIMITED	FARR
183724	41P16D202	(100) BATTERY MINERAL RESOURCES LIMITED	FARR

Tenure ID	Cell ID(s)	Holder	Township / Area
187687	41P16D247	(100) BATTERY MINERAL RESOURCES LIMITED	FARR
190968	41P16D123	(100) BATTERY MINERAL RESOURCES LIMITED	FARR
193762	41P16D265	(100) BATTERY MINERAL RESOURCES LIMITED	FARR
195223	41P16D244	(100) BATTERY MINERAL RESOURCES LIMITED	FARR
195273	41P16D182	(100) BATTERY MINERAL RESOURCES LIMITED	FARR
195274	41P16D204	(100) BATTERY MINERAL RESOURCES LIMITED	FARR
210456	41P16D166	(100) BATTERY MINERAL RESOURCES LIMITED	FARR
213778	41P16D225	(100) BATTERY MINERAL RESOURCES LIMITED	FARR
215462	41P16D350	(100) BATTERY MINERAL RESOURCES LIMITED	FARR
232781	41P16D284	(100) BATTERY MINERAL RESOURCES LIMITED	FARR
239084	41P16D186	(100) BATTERY MINERAL RESOURCES LIMITED	FARR
239085	41P16D183	(100) BATTERY MINERAL RESOURCES LIMITED	FARR
247165	41P16D103	(100) BATTERY MINERAL RESOURCES LIMITED	FARR
247166	41P16D184	(100) BATTERY MINERAL RESOURCES LIMITED	FARR
249313	41P16D306	(100) BATTERY MINERAL RESOURCES LIMITED	FARR
249314	41P16D303	(100) BATTERY MINERAL RESOURCES LIMITED	FARR
250674	41P16D349	(100) BATTERY MINERAL RESOURCES LIMITED	FARR
259183	41P16D104	(100) BATTERY MINERAL RESOURCES LIMITED	FARR
259184	41P16D163	(100) BATTERY MINERAL RESOURCES LIMITED	FARR
262059	41P16D305	(100) BATTERY MINERAL RESOURCES LIMITED	FARR
269384	41P16D390	(100) BATTERY MINERAL RESOURCES LIMITED	MICKLE
275836	41P16D126	(100) BATTERY MINERAL RESOURCES LIMITED	FARR
306368	41P16D105	(100) BATTERY MINERAL RESOURCES LIMITED	FARR
309764	41P16D206	(100) BATTERY MINERAL RESOURCES LIMITED	FARR
325861	41P16D145	(100) BATTERY MINERAL RESOURCES LIMITED	FARR
329122	41P16D243	(100) BATTERY MINERAL RESOURCES LIMITED	FARR
329325	41P16D389	(100) BATTERY MINERAL RESOURCES LIMITED	MICKLE
329975	41P16D304	(100) BATTERY MINERAL RESOURCES LIMITED	FARR
332300	41P16D348	(100) BATTERY MINERAL RESOURCES LIMITED	FARR
332301	41P16D370	(100) BATTERY MINERAL RESOURCES LIMITED	FARR,MICKLE
332321	41P16D388	(100) BATTERY MINERAL RESOURCES LIMITED	MICKLE
332467	41P16D285	(100) BATTERY MINERAL RESOURCES LIMITED	FARR
337327	41P16D242	(100) BATTERY MINERAL RESOURCES LIMITED	FARR
338563	41P16D246	(100) BATTERY MINERAL RESOURCES LIMITED	FARR
266189	41P09K015	(100) BATTERY MINERAL RESOURCES LIMITED	JAMES
216052	41P16C370	(100) BATTERY MINERAL RESOURCES LIMITED	JAMES,SMYTH
216053	41P16C391	(100) BATTERY MINERAL RESOURCES LIMITED	JAMES
246805	41P09K011	(100) BATTERY MINERAL RESOURCES LIMITED	JAMES
254161	41P16C390	(100) BATTERY MINERAL RESOURCES LIMITED	JAMES
302868	41P16C371	(100) BATTERY MINERAL RESOURCES LIMITED	JAMES,SMYTH
302869	41P09K010	(100) BATTERY MINERAL RESOURCES LIMITED	JAMES
105603	41P09F132	(100) BATTERY MINERAL RESOURCES LIMITED	WILLET
109552	41P09F010	(100) BATTERY MINERAL RESOURCES LIMITED	WILLET
111763	41P09K122	(100) BATTERY MINERAL RESOURCES LIMITED	JAMES
111764	41P09K143	(100) BATTERY MINERAL RESOURCES LIMITED	JAMES
123910	41P09F092	(100) BATTERY MINERAL RESOURCES LIMITED	WILLET
126006	41P09F150	(100) BATTERY MINERAL RESOURCES LIMITED	WILLET
128846	41P09K388	(100) BATTERY MINERAL RESOURCES LIMITED	JAMES,WILLET
128847	41P09F031	(100) BATTERY MINERAL RESOURCES LIMITED	WILLET
131782	41P09K085	(100) BATTERY MINERAL RESOURCES LIMITED	JAMES
131783	41P09K105	(100) BATTERY MINERAL RESOURCES LIMITED	JAMES
135401	41P09F111	(100) BATTERY MINERAL RESOURCES LIMITED	WILLET
135761	41P09F047	(100) BATTERY MINERAL RESOURCES LIMITED	WILLET
135981	41P09F196	(100) BATTERY MINERAL RESOURCES LIMITED	WILLET
136544	41P09F106	(100) BATTERY MINERAL RESOURCES LIMITED	WILLET

Tenure ID	Cell ID(s)	Holder	Township / Area
137993	41P09F130	(100) BATTERY MINERAL RESOURCES LIMITED	WILLET
137994	41P09F151	(100) BATTERY MINERAL RESOURCES LIMITED	WILLET
137995	41P09F149	(100) BATTERY MINERAL RESOURCES LIMITED	WILLET
140873	41P09F048	(100) BATTERY MINERAL RESOURCES LIMITED	WILLET
141204	41P09F026	(100) BATTERY MINERAL RESOURCES LIMITED	WILLET
142525	41P09F085	(100) BATTERY MINERAL RESOURCES LIMITED	WILLET
146330	41P09K391	(100) BATTERY MINERAL RESOURCES LIMITED	JAMES,WILLET
151805	41P09F112	(100) BATTERY MINERAL RESOURCES LIMITED	WILLET
151883	41P09F117	(100) BATTERY MINERAL RESOURCES LIMITED	BARBER,WILLET
151884	41P09F116	(100) BATTERY MINERAL RESOURCES LIMITED	WILLET
151885	41P09F137	(100) BATTERY MINERAL RESOURCES LIMITED	BARBER,WILLET
151886	41P09F136	(100) BATTERY MINERAL RESOURCES LIMITED	WILLET
151887	41P09F197	(100) BATTERY MINERAL RESOURCES LIMITED	BARBER,WILLET
153903	41P09F129	(100) BATTERY MINERAL RESOURCES LIMITED	WILLET
154778	41P09F027	(100) BATTERY MINERAL RESOURCES LIMITED	WILLET
156609	41P09F107	(100) BATTERY MINERAL RESOURCES LIMITED	WILLET
161956	41P09K103	(100) BATTERY MINERAL RESOURCES LIMITED	JAMES
161957	41P09K121	(100) BATTERY MINERAL RESOURCES LIMITED	JAMES
168504	41P09F156	(100) BATTERY MINERAL RESOURCES LIMITED	WILLET
168505	41P09F198	(100) BATTERY MINERAL RESOURCES LIMITED	BARBER
169946	41P09F006	(100) BATTERY MINERAL RESOURCES LIMITED	WILLET
169947	41P09F067	(100) BATTERY MINERAL RESOURCES LIMITED	WILLET
170556	41P09F170	(100) BATTERY MINERAL RESOURCES LIMITED	WILLET
171261	41P09F105	(100) BATTERY MINERAL RESOURCES LIMITED	WILLET
172668	41P09F152	(100) BATTERY MINERAL RESOURCES LIMITED	WILLET
172669	41P09F169	(100) BATTERY MINERAL RESOURCES LIMITED	WILLET
174894	41P09K389	(100) BATTERY MINERAL RESOURCES LIMITED	JAMES,WILLET
174895	41P09F049	(100) BATTERY MINERAL RESOURCES LIMITED	WILLET
181867	41P09F069	(100) BATTERY MINERAL RESOURCES LIMITED	WILLET
181942	41P09F138	(100) BATTERY MINERAL RESOURCES LIMITED	BARBER
187898	41P09F004	(100) BATTERY MINERAL RESOURCES LIMITED	WILLET
187922	41P09F072	(100) BATTERY MINERAL RESOURCES LIMITED	WILLET
196498	41P09K124	(100) BATTERY MINERAL RESOURCES LIMITED	JAMES
196499	41P09K144	(100) BATTERY MINERAL RESOURCES LIMITED	JAMES
201228	41P09F086	(100) BATTERY MINERAL RESOURCES LIMITED	WILLET
207923	41P09F045	(100) BATTERY MINERAL RESOURCES LIMITED	WILLET
207924	41P09F065	(100) BATTERY MINERAL RESOURCES LIMITED	WILLET
211633	41P09F030	(100) BATTERY MINERAL RESOURCES LIMITED	WILLET
217238	41P09F052	(100) BATTERY MINERAL RESOURCES LIMITED	WILLET
217239	41P09F089	(100) BATTERY MINERAL RESOURCES LIMITED	WILLET
220794	41P09F108	(100) BATTERY MINERAL RESOURCES LIMITED	WILLET
227313	41P09F171	(100) BATTERY MINERAL RESOURCES LIMITED	WILLET
228158	41P09K390	(100) BATTERY MINERAL RESOURCES LIMITED	JAMES,WILLET
228159	41P09F068	(100) BATTERY MINERAL RESOURCES LIMITED	WILLET
235819	41P09F118	(100) BATTERY MINERAL RESOURCES LIMITED	BARBER
235820	41P09F177	(100) BATTERY MINERAL RESOURCES LIMITED	BARBER,WILLET
237314	41P09F070	(100) BATTERY MINERAL RESOURCES LIMITED	WILLET
237379	41P09F097	(100) BATTERY MINERAL RESOURCES LIMITED	BARBER,WILLET
237380	41P09F157	(100) BATTERY MINERAL RESOURCES LIMITED	BARBER,WILLET
239426	41P09F131	(100) BATTERY MINERAL RESOURCES LIMITED	WILLET
254063	41P09F109	(100) BATTERY MINERAL RESOURCES LIMITED	WILLET
254572	41P09F005	(100) BATTERY MINERAL RESOURCES LIMITED	WILLET
254573	41P09F044	(100) BATTERY MINERAL RESOURCES LIMITED	WILLET
254638	41P09F098	(100) BATTERY MINERAL RESOURCES LIMITED	BARBER
256651	41P09F172	(100) BATTERY MINERAL RESOURCES LIMITED	WILLET

Tenure ID	Cell ID(s)	Holder	Township / Area
263225	41P09K084	(100) BATTERY MINERAL RESOURCES LIMITED	JAMES
263226	41P09K083	(100) BATTERY MINERAL RESOURCES LIMITED	JAMES
267989	41P09F088	(100) BATTERY MINERAL RESOURCES LIMITED	WILLET
269958	41P09K065	(100) BATTERY MINERAL RESOURCES LIMITED	JAMES
269959	41P09K142	(100) BATTERY MINERAL RESOURCES LIMITED	JAMES
269960	41P09K141	(100) BATTERY MINERAL RESOURCES LIMITED	JAMES
272436	41P09F090	(100) BATTERY MINERAL RESOURCES LIMITED	WILLET
272503	41P09F158	(100) BATTERY MINERAL RESOURCES LIMITED	BARBER
273933	41P09F025	(100) BATTERY MINERAL RESOURCES LIMITED	WILLET
283214	41P09F051	(100) BATTERY MINERAL RESOURCES LIMITED	WILLET
283215	41P09F091	(100) BATTERY MINERAL RESOURCES LIMITED	WILLET
283778	41P09F178	(100) BATTERY MINERAL RESOURCES LIMITED	BARBER
283779	41P09F176	(100) BATTERY MINERAL RESOURCES LIMITED	WILLET
288647	41P09F011	(100) BATTERY MINERAL RESOURCES LIMITED	WILLET
288648	41P09F008	(100) BATTERY MINERAL RESOURCES LIMITED	WILLET
288649	41P09F028	(100) BATTERY MINERAL RESOURCES LIMITED	WILLET
296160	41P09F029	(100) BATTERY MINERAL RESOURCES LIMITED	WILLET
303779	41P09F066	(100) BATTERY MINERAL RESOURCES LIMITED	WILLET
308881	41P09F009	(100) BATTERY MINERAL RESOURCES LIMITED	WILLET
310532	41P09F046	(100) BATTERY MINERAL RESOURCES LIMITED	WILLET
311837	41P09F087	(100) BATTERY MINERAL RESOURCES LIMITED	WILLET
323275	41P09F024	(100) BATTERY MINERAL RESOURCES LIMITED	WILLET
323276	41P09F064	(100) BATTERY MINERAL RESOURCES LIMITED	WILLET
329911	41P09K104	(100) BATTERY MINERAL RESOURCES LIMITED	JAMES
329912	41P09K123	(100) BATTERY MINERAL RESOURCES LIMITED	JAMES
330995	41P09F110	(100) BATTERY MINERAL RESOURCES LIMITED	WILLET
334021	41P09F007	(100) BATTERY MINERAL RESOURCES LIMITED	WILLET
336469	41P09F050	(100) BATTERY MINERAL RESOURCES LIMITED	WILLET
339298	41P09K064	(100) BATTERY MINERAL RESOURCES LIMITED	JAMES
342842	41P09F071	(100) BATTERY MINERAL RESOURCES LIMITED	WILLET
122075	41P09K197	(100) BATTERY MINERAL RESOURCES LIMITED	JAMES,TUDHOPE
134086	41P09K216	(100) BATTERY MINERAL RESOURCES LIMITED	JAMES
149540	41P09K257	(100) BATTERY MINERAL RESOURCES LIMITED	JAMES,TUDHOPE
166587	41P09K237	(100) BATTERY MINERAL RESOURCES LIMITED	JAMES,TUDHOPE
179322	41P09K236	(100) BATTERY MINERAL RESOURCES LIMITED	JAMES
246058	41P09K196	(100) BATTERY MINERAL RESOURCES LIMITED	JAMES
252889	41P09K217	(100) BATTERY MINERAL RESOURCES LIMITED	JAMES,TUDHOPE
292170	41P09L050	(100) BATTERY MINERAL RESOURCES LIMITED	MICKLE
109948	41P16C359	(100) BATTERY MINERAL RESOURCES LIMITED	TRUAX
138403	41P16C356	(100) BATTERY MINERAL RESOURCES LIMITED	SMYTH,TRUAX
210499	41P16C360	(100) BATTERY MINERAL RESOURCES LIMITED	TRUAX
220344	41P16C379	(100) BATTERY MINERAL RESOURCES LIMITED	TRUAX,TUDHOPE
306419	41P16C358	(100) BATTERY MINERAL RESOURCES LIMITED	TRUAX
326417	41P16C357	(100) BATTERY MINERAL RESOURCES LIMITED	TRUAX
220140	41P09L008	(100) BATTERY MINERAL RESOURCES LIMITED	MICKLE
255206	41P09L009	(100) BATTERY MINERAL RESOURCES LIMITED	MICKLE
501913	41P09K284	(100) BATTERY MINERAL RESOURCES LIMITED	JAMES
501915	41P09K285	(100) BATTERY MINERAL RESOURCES LIMITED	JAMES
501916	41P09K286	(100) BATTERY MINERAL RESOURCES LIMITED	JAMES
501917	41P09K287	(100) BATTERY MINERAL RESOURCES LIMITED	JAMES
501918	41P09K304	(100) BATTERY MINERAL RESOURCES LIMITED	JAMES
501919	41P09K305	(100) BATTERY MINERAL RESOURCES LIMITED	JAMES
501920	41P09K306	(100) BATTERY MINERAL RESOURCES LIMITED	JAMES
501921	41P09K307	(100) BATTERY MINERAL RESOURCES LIMITED	JAMES
501922	41P09K324	(100) BATTERY MINERAL RESOURCES LIMITED	JAMES

Tenure ID	Cell ID(s)	Holder	Township / Area
501923	41P09K325	(100) BATTERY MINERAL RESOURCES LIMITED	JAMES
501924	41P09K326	(100) BATTERY MINERAL RESOURCES LIMITED	JAMES
501925	41P09K327	(100) BATTERY MINERAL RESOURCES LIMITED	JAMES
503005	41P09G245	(100) BATTERY MINERAL RESOURCES LIMITED	BARBER
503006	41P09G265	(100) BATTERY MINERAL RESOURCES LIMITED	BARBER
503007	41P09G285	(100) BATTERY MINERAL RESOURCES LIMITED	BARBER
503396	41P09F125	(100) BATTERY MINERAL RESOURCES LIMITED	WILLET
503397	41P09F126	(100) BATTERY MINERAL RESOURCES LIMITED	WILLET
503398	41P09F127	(100) BATTERY MINERAL RESOURCES LIMITED	WILLET
503399	41P09F128	(100) BATTERY MINERAL RESOURCES LIMITED	WILLET
503683	41P09L188	(100) BATTERY MINERAL RESOURCES LIMITED	MICKLE
503684	41P09L189	(100) BATTERY MINERAL RESOURCES LIMITED	MICKLE
503761	41P16D366	(100) BATTERY MINERAL RESOURCES LIMITED	FARR,MICKLE
503762	41P16D367	(100) BATTERY MINERAL RESOURCES LIMITED	FARR,MICKLE
102921	41P16C226	(100) BATTERY MINERAL RESOURCES LIMITED	SMYTH
108290	41P09L010	(100) BATTERY MINERAL RESOURCES LIMITED	MICKLE
109672	41P16C332	(100) BATTERY MINERAL RESOURCES LIMITED	SMYTH
109673	41P16C371	(100) BATTERY MINERAL RESOURCES LIMITED	JAMES,SMYTH
110959	41P16C321	(100) BATTERY MINERAL RESOURCES LIMITED	SMYTH
112752	41P16C315	(100) BATTERY MINERAL RESOURCES LIMITED	SMYTH
124260	41P16C324	(100) BATTERY MINERAL RESOURCES LIMITED	SMYTH
125787	41P16C225	(100) BATTERY MINERAL RESOURCES LIMITED	SMYTH
125788	41P16C266	(100) BATTERY MINERAL RESOURCES LIMITED	SMYTH
125789	41P16C264	(100) BATTERY MINERAL RESOURCES LIMITED	SMYTH
125790	41P16C305	(100) BATTERY MINERAL RESOURCES LIMITED	SMYTH
130248	41P16C372	(100) BATTERY MINERAL RESOURCES LIMITED	JAMES,SMYTH
130482	41P16C262	(100) BATTERY MINERAL RESOURCES LIMITED	SMYTH
133177	41P16C247	(100) BATTERY MINERAL RESOURCES LIMITED	SMYTH
138221	41P16D390	(100) BATTERY MINERAL RESOURCES LIMITED	MICKLE
138222	41P09L011	(100) BATTERY MINERAL RESOURCES LIMITED	MICKLE
138326	41P09K196	(100) BATTERY MINERAL RESOURCES LIMITED	JAMES
141738	41P16C347	(100) BATTERY MINERAL RESOURCES LIMITED	SMYTH
146383	41P16C343	(100) BATTERY MINERAL RESOURCES LIMITED	SMYTH
146384	41P16C342	(100) BATTERY MINERAL RESOURCES LIMITED	SMYTH
150538	41P16C355	(100) BATTERY MINERAL RESOURCES LIMITED	SMYTH
153261	41P16C287	(100) BATTERY MINERAL RESOURCES LIMITED	SMYTH
153750	41P16C263	(100) BATTERY MINERAL RESOURCES LIMITED	SMYTH
153751	41P16C283	(100) BATTERY MINERAL RESOURCES LIMITED	SMYTH
154027	41P16C336	(100) BATTERY MINERAL RESOURCES LIMITED	SMYTH,TRUAX
159044	41P16D329	(100) BATTERY MINERAL RESOURCES LIMITED	FARR
161160	41P16C281	(100) BATTERY MINERAL RESOURCES LIMITED	SMYTH
167932	41P16C268	(100) BATTERY MINERAL RESOURCES LIMITED	SMYTH
170364	41P16C309	(100) BATTERY MINERAL RESOURCES LIMITED	SMYTH
170365	41P16C329	(100) BATTERY MINERAL RESOURCES LIMITED	SMYTH
170366	41P16C370	(100) BATTERY MINERAL RESOURCES LIMITED	JAMES,SMYTH
170894	41P16C223	(100) BATTERY MINERAL RESOURCES LIMITED	SMYTH
173080	41P16C285	(100) BATTERY MINERAL RESOURCES LIMITED	SMYTH
175535	41P16C312	(100) BATTERY MINERAL RESOURCES LIMITED	SMYTH
175536	41P16C333	(100) BATTERY MINERAL RESOURCES LIMITED	SMYTH
175537	41P16C351	(100) BATTERY MINERAL RESOURCES LIMITED	SMYTH
178578	41P16D330	(100) BATTERY MINERAL RESOURCES LIMITED	FARR
178579	41P16D328	(100) BATTERY MINERAL RESOURCES LIMITED	FARR
183005	41P09K197	(100) BATTERY MINERAL RESOURCES LIMITED	JAMES,TUDHOPE
183164	41P16C348	(100) BATTERY MINERAL RESOURCES LIMITED	SMYTH
189123	41P16C349	(100) BATTERY MINERAL RESOURCES LIMITED	SMYTH

Tenure ID	Cell ID(s)	Holder	Township / Area
189161	41P16C244	(100) BATTERY MINERAL RESOURCES LIMITED	SMYTH
190956	41P09K177	(100) BATTERY MINERAL RESOURCES LIMITED	JAMES,TUDHOPE
193509	41P16C313	(100) BATTERY MINERAL RESOURCES LIMITED	SMYTH
195184	41P16C242	(100) BATTERY MINERAL RESOURCES LIMITED	SMYTH
195185	41P16C282	(100) BATTERY MINERAL RESOURCES LIMITED	SMYTH
198671	41P16C376	(100) BATTERY MINERAL RESOURCES LIMITED	JAMES,SMYTH,TRUAX,TUDHOPE
202342	41P16D371	(100) BATTERY MINERAL RESOURCES LIMITED	FARR,MICKLE
205255	41P16C228	(100) BATTERY MINERAL RESOURCES LIMITED	SMYTH
208344	41P16C284	(100) BATTERY MINERAL RESOURCES LIMITED	SMYTH
224425	41P16D331	(100) BATTERY MINERAL RESOURCES LIMITED	FARR
224426	41P16D349	(100) BATTERY MINERAL RESOURCES LIMITED	FARR
226496	41P16C330	(100) BATTERY MINERAL RESOURCES LIMITED	SMYTH
227049	41P16C306	(100) BATTERY MINERAL RESOURCES LIMITED	SMYTH
227050	41P16C303	(100) BATTERY MINERAL RESOURCES LIMITED	SMYTH
236940	41P16C307	(100) BATTERY MINERAL RESOURCES LIMITED	SMYTH
239066	41P09K176	(100) BATTERY MINERAL RESOURCES LIMITED	JAMES
241636	41P16C353	(100) BATTERY MINERAL RESOURCES LIMITED	SMYTH
241653	41P16C301	(100) BATTERY MINERAL RESOURCES LIMITED	SMYTH
241677	41P16C341	(100) BATTERY MINERAL RESOURCES LIMITED	SMYTH
246383	41P16C316	(100) BATTERY MINERAL RESOURCES LIMITED	SMYTH,TRUAX
250400	41P16C241	(100) BATTERY MINERAL RESOURCES LIMITED	SMYTH
253842	41P16C314	(100) BATTERY MINERAL RESOURCES LIMITED	SMYTH
253843	41P16C354	(100) BATTERY MINERAL RESOURCES LIMITED	SMYTH
261870	41P16C261	(100) BATTERY MINERAL RESOURCES LIMITED	SMYTH
266261	41P16C310	(100) BATTERY MINERAL RESOURCES LIMITED	SMYTH
266298	41P16C245	(100) BATTERY MINERAL RESOURCES LIMITED	SMYTH
267079	41P16C346	(100) BATTERY MINERAL RESOURCES LIMITED	SMYTH
272660	41P16C356	(100) BATTERY MINERAL RESOURCES LIMITED	SMYTH,TRUAX
272661	41P16C374	(100) BATTERY MINERAL RESOURCES LIMITED	JAMES,SMYTH
273193	41P16C345	(100) BATTERY MINERAL RESOURCES LIMITED	SMYTH
274226	41P16C308	(100) BATTERY MINERAL RESOURCES LIMITED	SMYTH
274227	41P16C350	(100) BATTERY MINERAL RESOURCES LIMITED	SMYTH
275820	41P09K157	(100) BATTERY MINERAL RESOURCES LIMITED	JAMES,TUDHOPE
288768	41P16C373	(100) BATTERY MINERAL RESOURCES LIMITED	JAMES,SMYTH
293127	41P16C328	(100) BATTERY MINERAL RESOURCES LIMITED	SMYTH
293162	41P16C286	(100) BATTERY MINERAL RESOURCES LIMITED	SMYTH
296791	41P16C311	(100) BATTERY MINERAL RESOURCES LIMITED	SMYTH
302525	41P16C335	(100) BATTERY MINERAL RESOURCES LIMITED	SMYTH
306211	41P16D370	(100) BATTERY MINERAL RESOURCES LIMITED	FARR,MICKLE
306212	41P16D391	(100) BATTERY MINERAL RESOURCES LIMITED	MICKLE
306350	41P09K137	(100) BATTERY MINERAL RESOURCES LIMITED	JAMES,TUDHOPE
309499	41P16C352	(100) BATTERY MINERAL RESOURCES LIMITED	SMYTH
311018	41P16C344	(100) BATTERY MINERAL RESOURCES LIMITED	SMYTH
315688	41P16C323	(100) BATTERY MINERAL RESOURCES LIMITED	SMYTH
319075	41P16C267	(100) BATTERY MINERAL RESOURCES LIMITED	SMYTH
319076	41P16C288	(100) BATTERY MINERAL RESOURCES LIMITED	SMYTH
321243	41P16C248	(100) BATTERY MINERAL RESOURCES LIMITED	SMYTH
322402	41P16C243	(100) BATTERY MINERAL RESOURCES LIMITED	SMYTH
322403	41P16C265	(100) BATTERY MINERAL RESOURCES LIMITED	SMYTH
322404	41P16C304	(100) BATTERY MINERAL RESOURCES LIMITED	SMYTH
327660	41P16D351	(100) BATTERY MINERAL RESOURCES LIMITED	FARR
327661	41P16D350	(100) BATTERY MINERAL RESOURCES LIMITED	FARR
327897	41P16C302	(100) BATTERY MINERAL RESOURCES LIMITED	SMYTH
329092	41P16C222	(100) BATTERY MINERAL RESOURCES LIMITED	SMYTH
329093	41P16C221	(100) BATTERY MINERAL RESOURCES LIMITED	SMYTH

Tenure ID	Cell ID(s)	Holder	Township / Area
331199	41P16C227	(100) BATTERY MINERAL RESOURCES LIMITED	SMYTH
333423	41P16C334	(100) BATTERY MINERAL RESOURCES LIMITED	SMYTH
333424	41P16C375	(100) BATTERY MINERAL RESOURCES LIMITED	JAMES,SMYTH
336616	41P16C322	(100) BATTERY MINERAL RESOURCES LIMITED	SMYTH
337130	41P16C331	(100) BATTERY MINERAL RESOURCES LIMITED	SMYTH
340055	41P16D348	(100) BATTERY MINERAL RESOURCES LIMITED	FARR
342447	41P16C327	(100) BATTERY MINERAL RESOURCES LIMITED	SMYTH
342448	41P16C326	(100) BATTERY MINERAL RESOURCES LIMITED	SMYTH
342449	41P16C325	(100) BATTERY MINERAL RESOURCES LIMITED	SMYTH
345292	41P16C224	(100) BATTERY MINERAL RESOURCES LIMITED	SMYTH
345293	41P16C246	(100) BATTERY MINERAL RESOURCES LIMITED	SMYTH
548623	41P09J261	(100) BATTERY MINERAL RESOURCES LIMITED	TUDHOPE
103929	41P09L051	(100) BATTERY MINERAL RESOURCES LIMITED	MICKLE
114711	41P09L030	(100) BATTERY MINERAL RESOURCES LIMITED	MICKLE
139822	41P09L050	(100) BATTERY MINERAL RESOURCES LIMITED	MICKLE
184592	41P09L031	(100) BATTERY MINERAL RESOURCES LIMITED	MICKLE
275484	41P09K256	(100) BATTERY MINERAL RESOURCES LIMITED	JAMES
275485	41P09K255	(100) BATTERY MINERAL RESOURCES LIMITED	JAMES
299065	41P09L071	(100) BATTERY MINERAL RESOURCES LIMITED	MICKLE
100744	41P09K359	(100) BATTERY MINERAL RESOURCES LIMITED	TUDHOPE
100745	41P09K358	(100) BATTERY MINERAL RESOURCES LIMITED	TUDHOPE
101263	41P09F096	(100) BATTERY MINERAL RESOURCES LIMITED	WILLET
101264	41P09F093	(100) BATTERY MINERAL RESOURCES LIMITED	WILLET
101282	41P09F194	(100) BATTERY MINERAL RESOURCES LIMITED	WILLET
102518	41P09F136	(100) BATTERY MINERAL RESOURCES LIMITED	WILLET
102519	41P09F153	(100) BATTERY MINERAL RESOURCES LIMITED	WILLET
102520	41P09F172	(100) BATTERY MINERAL RESOURCES LIMITED	WILLET
105941	41P09K138	(100) BATTERY MINERAL RESOURCES LIMITED	TUDHOPE
105942	41P09K158	(100) BATTERY MINERAL RESOURCES LIMITED	TUDHOPE
114908	41P09K399	(100) BATTERY MINERAL RESOURCES LIMITED	BARBER,TUDHOPE
116028	41P09K332	(100) BATTERY MINERAL RESOURCES LIMITED	JAMES
117750	41P09F112	(100) BATTERY MINERAL RESOURCES LIMITED	WILLET
117851	41P09F156	(100) BATTERY MINERAL RESOURCES LIMITED	WILLET
119578	41P09J302	(100) BATTERY MINERAL RESOURCES LIMITED	TUDHOPE
119971	41P09K159	(100) BATTERY MINERAL RESOURCES LIMITED	TUDHOPE
123779	41P09F055	(100) BATTERY MINERAL RESOURCES LIMITED	WILLET
123780	41P09F097	(100) BATTERY MINERAL RESOURCES LIMITED	BARBER,WILLET
123781	41P09F117	(100) BATTERY MINERAL RESOURCES LIMITED	BARBER,WILLET
123798	41P09F174	(100) BATTERY MINERAL RESOURCES LIMITED	WILLET
123799	41P09F196	(100) BATTERY MINERAL RESOURCES LIMITED	WILLET
126355	41P09J381	(100) BATTERY MINERAL RESOURCES LIMITED	BARBER,TUDHOPE
128467	41P09J325	(100) BATTERY MINERAL RESOURCES LIMITED	TUDHOPE
129547	41P09K351	(100) BATTERY MINERAL RESOURCES LIMITED	JAMES
131434	41P09K178	(100) BATTERY MINERAL RESOURCES LIMITED	TUDHOPE
131435	41P09K197	(100) BATTERY MINERAL RESOURCES LIMITED	JAMES,TUDHOPE
135901	41P09L113	(100) BATTERY MINERAL RESOURCES LIMITED	MICKLE
147444	41P09K139	(100) BATTERY MINERAL RESOURCES LIMITED	TUDHOPE
152289	41P09F054	(100) BATTERY MINERAL RESOURCES LIMITED	WILLET
152290	41P09F116	(100) BATTERY MINERAL RESOURCES LIMITED	WILLET
152399	41P09F214	(100) BATTERY MINERAL RESOURCES LIMITED	WILLET
152400	41P09F235	(100) BATTERY MINERAL RESOURCES LIMITED	WILLET
152401	41P09F134	(100) BATTERY MINERAL RESOURCES LIMITED	WILLET
153645	41P09F170	(100) BATTERY MINERAL RESOURCES LIMITED	WILLET
153646	41P09F192	(100) BATTERY MINERAL RESOURCES LIMITED	WILLET
153647	41P09F190	(100) BATTERY MINERAL RESOURCES LIMITED	WILLET

Tenure ID	Cell ID(s)	Holder	Township / Area
156577	41P09K218	(100) BATTERY MINERAL RESOURCES LIMITED	TUDHOPE
162187	41P09K398	(100) BATTERY MINERAL RESOURCES LIMITED	BARBER,TUDHOPE
162992	41P09J305	(100) BATTERY MINERAL RESOURCES LIMITED	TUDHOPE
162993	41P09J324	(100) BATTERY MINERAL RESOURCES LIMITED	TUDHOPE
164822	41P09K352	(100) BATTERY MINERAL RESOURCES LIMITED	JAMES
168894	41P09F052	(100) BATTERY MINERAL RESOURCES LIMITED	WILLET
169014	41P09F133	(100) BATTERY MINERAL RESOURCES LIMITED	WILLET
169015	41P09F155	(100) BATTERY MINERAL RESOURCES LIMITED	WILLET
181575	41P09K199	(100) BATTERY MINERAL RESOURCES LIMITED	TUDHOPE
181814	41P09F132	(100) BATTERY MINERAL RESOURCES LIMITED	WILLET
183443	41P09K099	(100) BATTERY MINERAL RESOURCES LIMITED	TUDHOPE
189013	41P09K260	(100) BATTERY MINERAL RESOURCES LIMITED	TUDHOPE
191875	41P09J342	(100) BATTERY MINERAL RESOURCES LIMITED	TUDHOPE
198312	41P09F115	(100) BATTERY MINERAL RESOURCES LIMITED	WILLET
206314	41P09F216	(100) BATTERY MINERAL RESOURCES LIMITED	WILLET
206315	41P09F215	(100) BATTERY MINERAL RESOURCES LIMITED	WILLET
206651	41P09L130	(100) BATTERY MINERAL RESOURCES LIMITED	MICKLE
208529	41P09K240	(100) BATTERY MINERAL RESOURCES LIMITED	TUDHOPE
208530	41P09K239	(100) BATTERY MINERAL RESOURCES LIMITED	TUDHOPE
217109	41P09F195	(100) BATTERY MINERAL RESOURCES LIMITED	WILLET
218475	41P09F171	(100) BATTERY MINERAL RESOURCES LIMITED	WILLET
228863	41P09K380	(100) BATTERY MINERAL RESOURCES LIMITED	TUDHOPE
229745	41P09J304	(100) BATTERY MINERAL RESOURCES LIMITED	TUDHOPE
229746	41P09J322	(100) BATTERY MINERAL RESOURCES LIMITED	TUDHOPE
231285	41P09K119	(100) BATTERY MINERAL RESOURCES LIMITED	TUDHOPE
231286	41P09K177	(100) BATTERY MINERAL RESOURCES LIMITED	JAMES,TUDHOPE
235654	41P09F175	(100) BATTERY MINERAL RESOURCES LIMITED	WILLET
235735	41P09F213	(100) BATTERY MINERAL RESOURCES LIMITED	WILLET
235739	41P09F135	(100) BATTERY MINERAL RESOURCES LIMITED	WILLET
237676	41P09K219	(100) BATTERY MINERAL RESOURCES LIMITED	TUDHOPE
241893	41P09J285	(100) BATTERY MINERAL RESOURCES LIMITED	TUDHOPE
241894	41P09J284	(100) BATTERY MINERAL RESOURCES LIMITED	TUDHOPE
241895	41P09J283	(100) BATTERY MINERAL RESOURCES LIMITED	TUDHOPE
243427	41P09K117	(100) BATTERY MINERAL RESOURCES LIMITED	JAMES,TUDHOPE
250761	41P09K157	(100) BATTERY MINERAL RESOURCES LIMITED	JAMES,TUDHOPE
257572	41P09K378	(100) BATTERY MINERAL RESOURCES LIMITED	TUDHOPE
257573	41P09K400	(100) BATTERY MINERAL RESOURCES LIMITED	BARBER,TUDHOPE
264311	41P09F094	(100) BATTERY MINERAL RESOURCES LIMITED	WILLET
267810	41P09K257	(100) BATTERY MINERAL RESOURCES LIMITED	JAMES,TUDHOPE
272273	41P09F073	(100) BATTERY MINERAL RESOURCES LIMITED	WILLET
272274	41P09F114	(100) BATTERY MINERAL RESOURCES LIMITED	WILLET
272903	41P09F236	(100) BATTERY MINERAL RESOURCES LIMITED	WILLET
272905	41P09F154	(100) BATTERY MINERAL RESOURCES LIMITED	WILLET
272906	41P09F152	(100) BATTERY MINERAL RESOURCES LIMITED	WILLET
273654	41P09F191	(100) BATTERY MINERAL RESOURCES LIMITED	WILLET
274428	41P09K200	(100) BATTERY MINERAL RESOURCES LIMITED	TUDHOPE
279295	41P09K097	(100) BATTERY MINERAL RESOURCES LIMITED	JAMES,TUDHOPE
279296	41P09K137	(100) BATTERY MINERAL RESOURCES LIMITED	JAMES,TUDHOPE
280245	41P09K372	(100) BATTERY MINERAL RESOURCES LIMITED	JAMES
284366	41P09F053	(100) BATTERY MINERAL RESOURCES LIMITED	WILLET
284367	41P09F074	(100) BATTERY MINERAL RESOURCES LIMITED	WILLET
284390	41P09F173	(100) BATTERY MINERAL RESOURCES LIMITED	WILLET
288992	41P09J282	(100) BATTERY MINERAL RESOURCES LIMITED	TUDHOPE
289013	41P09J303	(100) BATTERY MINERAL RESOURCES LIMITED	TUDHOPE
291690	41P09F092	(100) BATTERY MINERAL RESOURCES LIMITED	WILLET



Tenure ID	Cell ID(s)	Holder	Township / Area
291691	41P09F113	(100) BATTERY MINERAL RESOURCES LIMITED	WILLET
291708	41P09F176	(100) BATTERY MINERAL RESOURCES LIMITED	WILLET
296356	41P09J343	(100) BATTERY MINERAL RESOURCES LIMITED	TUDHOPE
297982	41P09K098	(100) BATTERY MINERAL RESOURCES LIMITED	TUDHOPE
304923	41P09K217	(100) BATTERY MINERAL RESOURCES LIMITED	JAMES,TUDHOPE
304924	41P09K259	(100) BATTERY MINERAL RESOURCES LIMITED	TUDHOPE
308639	41P09L131	(100) BATTERY MINERAL RESOURCES LIMITED	MICKLE
310131	41P09K198	(100) BATTERY MINERAL RESOURCES LIMITED	TUDHOPE
311738	41P09K238	(100) BATTERY MINERAL RESOURCES LIMITED	TUDHOPE
311739	41P09K237	(100) BATTERY MINERAL RESOURCES LIMITED	JAMES,TUDHOPE
311740	41P09K258	(100) BATTERY MINERAL RESOURCES LIMITED	TUDHOPE
312006	41P09K379	(100) BATTERY MINERAL RESOURCES LIMITED	TUDHOPE
312797	41P09K371	(100) BATTERY MINERAL RESOURCES LIMITED	JAMES
316681	41P09K118	(100) BATTERY MINERAL RESOURCES LIMITED	TUDHOPE
320901	41P09F075	(100) BATTERY MINERAL RESOURCES LIMITED	WILLET
320902	41P09F072	(100) BATTERY MINERAL RESOURCES LIMITED	WILLET
320920	41P09F193	(100) BATTERY MINERAL RESOURCES LIMITED	WILLET
321010	41P09F234	(100) BATTERY MINERAL RESOURCES LIMITED	WILLET
325049	41P09J323	(100) BATTERY MINERAL RESOURCES LIMITED	TUDHOPE
326845	41P09K331	(100) BATTERY MINERAL RESOURCES LIMITED	JAMES
343206	41P09K220	(100) BATTERY MINERAL RESOURCES LIMITED	TUDHOPE
343307	41P09F095	(100) BATTERY MINERAL RESOURCES LIMITED	WILLET
343921	41P09F233	(100) BATTERY MINERAL RESOURCES LIMITED	WILLET
113114	41P09L007	(100) BATTERY MINERAL RESOURCES LIMITED	MICKLE
141837	41P16D387	(100) BATTERY MINERAL RESOURCES LIMITED	MICKLE
155435	41P09L026	(100) BATTERY MINERAL RESOURCES LIMITED	MICKLE
170581	41P16D385	(100) BATTERY MINERAL RESOURCES LIMITED	MICKLE
200560	41P09L045	(100) BATTERY MINERAL RESOURCES LIMITED	MICKLE
208578	41P09L006	(100) BATTERY MINERAL RESOURCES LIMITED	MICKLE
208579	41P09L025	(100) BATTERY MINERAL RESOURCES LIMITED	MICKLE
267331	41P09L046	(100) BATTERY MINERAL RESOURCES LIMITED	MICKLE
303896	41P16D386	(100) BATTERY MINERAL RESOURCES LIMITED	MICKLE
311171	41P09L027	(100) BATTERY MINERAL RESOURCES LIMITED	MICKLE
323405	41P09L005	(100) BATTERY MINERAL RESOURCES LIMITED	MICKLE
125153	41P09K016	(100) BATTERY MINERAL RESOURCES LIMITED	JAMES,TUDHOPE
117309	41P16C398	(100) BATTERY MINERAL RESOURCES LIMITED	TUDHOPE
189070	41P16C397	(100) BATTERY MINERAL RESOURCES LIMITED	TUDHOPE
306353	41P16C377	(100) BATTERY MINERAL RESOURCES LIMITED	TRUAX,TUDHOPE
323609	41P16C378	(100) BATTERY MINERAL RESOURCES LIMITED	TRUAX,TUDHOPE
100026	41P09F103	(100) BATTERY MINERAL RESOURCES LIMITED	WILLET
154245	41P09F063	(100) BATTERY MINERAL RESOURCES LIMITED	WILLET
170804	41P09F024	(100) BATTERY MINERAL RESOURCES LIMITED	WILLET
200082	41P09F083	(100) BATTERY MINERAL RESOURCES LIMITED	WILLET
200083	41P09F105	(100) BATTERY MINERAL RESOURCES LIMITED	WILLET
220196	41P09F044	(100) BATTERY MINERAL RESOURCES LIMITED	WILLET
220197	41P09F064	(100) BATTERY MINERAL RESOURCES LIMITED	WILLET
220198	41P09F084	(100) BATTERY MINERAL RESOURCES LIMITED	WILLET
220199	41P09F104	(100) BATTERY MINERAL RESOURCES LIMITED	WILLET
226971	41P09F085	(100) BATTERY MINERAL RESOURCES LIMITED	WILLET
302577	41P09F023	(100) BATTERY MINERAL RESOURCES LIMITED	WILLET
302578	41P09F065	(100) BATTERY MINERAL RESOURCES LIMITED	WILLET
320679	41P09F043	(100) BATTERY MINERAL RESOURCES LIMITED	WILLET
104622	41P16B381	(100) BATTERY MINERAL RESOURCES LIMITED	TUDHOPE
157739	41P09J002	(100) BATTERY MINERAL RESOURCES LIMITED	TUDHOPE
163824	41P16B362	(100) BATTERY MINERAL RESOURCES LIMITED	TRUAX,TUDHOPE

Tenure ID	Cell ID(s)	Holder	Township / Area
173851	41P16C400	(100) BATTERY MINERAL RESOURCES LIMITED	TUDHOPE
231082	41P09J001	(100) BATTERY MINERAL RESOURCES LIMITED	TUDHOPE
243278	41P16B361	(100) BATTERY MINERAL RESOURCES LIMITED	TRUAX,TUDHOPE
275017	41P09K020	(100) BATTERY MINERAL RESOURCES LIMITED	TUDHOPE
278323	41P09J022	(100) BATTERY MINERAL RESOURCES LIMITED	TUDHOPE
279093	41P16B382	(100) BATTERY MINERAL RESOURCES LIMITED	TUDHOPE
293139	41P09J042	(100) BATTERY MINERAL RESOURCES LIMITED	TUDHOPE
335440	41P16C380	(100) BATTERY MINERAL RESOURCES LIMITED	TRUAX,TUDHOPE
166144	41P16D226	(40) SUNVEST MINERALS CORP. , (60) BATTERY MINERAL RESOURCES LIMITED	FARR
195432	41P16D246	(40) SUNVEST MINERALS CORP. , (60) BATTERY MINERAL RESOURCES LIMITED	FARR
332322	41P16D227	(40) SUNVEST MINERALS CORP. , (60) BATTERY MINERAL RESOURCES LIMITED	FARR
125745	41P09K058	(100) BATTERY MINERAL RESOURCES LIMITED	TUDHOPE
153719	41P09K059	(100) BATTERY MINERAL RESOURCES LIMITED	TUDHOPE
163825	41P09J021	(100) BATTERY MINERAL RESOURCES LIMITED	TUDHOPE
163960	41P09K017	(100) BATTERY MINERAL RESOURCES LIMITED	TUDHOPE
163961	41P09K038	(100) BATTERY MINERAL RESOURCES LIMITED	TUDHOPE
171629	41P09K018	(100) BATTERY MINERAL RESOURCES LIMITED	TUDHOPE
183404	41P09K039	(100) BATTERY MINERAL RESOURCES LIMITED	TUDHOPE
189898	41P09K019	(100) BATTERY MINERAL RESOURCES LIMITED	TUDHOPE
274236	41P09J041	(100) BATTERY MINERAL RESOURCES LIMITED	TUDHOPE
278324	41P09K040	(100) BATTERY MINERAL RESOURCES LIMITED	TUDHOPE
316144	41P09K037	(100) BATTERY MINERAL RESOURCES LIMITED	TUDHOPE
345262	41P09K060	(100) BATTERY MINERAL RESOURCES LIMITED	TUDHOPE
208753	41P09F079	(100) BATTERY MINERAL RESOURCES LIMITED	BARBER
136840	41P09K076	(100) BATTERY MINERAL RESOURCES LIMITED	JAMES
176117	41P09K075	(100) BATTERY MINERAL RESOURCES LIMITED	JAMES
226421	41P09K056	(100) BATTERY MINERAL RESOURCES LIMITED	JAMES,TUDHOPE
293037	41P09K055	(100) BATTERY MINERAL RESOURCES LIMITED	JAMES
316305	41P09K094	(100) BATTERY MINERAL RESOURCES LIMITED	JAMES
337681	41P09K074	(100) BATTERY MINERAL RESOURCES LIMITED	JAMES
344663	41P09K054	(100) BATTERY MINERAL RESOURCES LIMITED	JAMES
110669	41P16C376	(100) BATTERY MINERAL RESOURCES LIMITED	JAMES,SMYTH,TRUAX,TUDHOPE
156461	41P16C395	(100) BATTERY MINERAL RESOURCES LIMITED	JAMES
233834	41P16C396	(100) BATTERY MINERAL RESOURCES LIMITED	JAMES,TUDHOPE
254165	41P09K097	(100) BATTERY MINERAL RESOURCES LIMITED	JAMES,TUDHOPE
265567	41P09K117	(100) BATTERY MINERAL RESOURCES LIMITED	JAMES,TUDHOPE
343092	41P16C375	(100) BATTERY MINERAL RESOURCES LIMITED	JAMES,SMYTH
254867	41P09G370	(100) BATTERY MINERAL RESOURCES LIMITED	BARBER
324835	41P09G022	(100) BATTERY MINERAL RESOURCES LIMITED	BARBER
129858	41P09K115	(100) BATTERY MINERAL RESOURCES LIMITED	JAMES
225790	41P09K116	(100) BATTERY MINERAL RESOURCES LIMITED	JAMES
260968	41P09K096	(100) BATTERY MINERAL RESOURCES LIMITED	JAMES
338795	41P09K095	(100) BATTERY MINERAL RESOURCES LIMITED	JAMES
562043	41P09F016	(100) BATTERY MINERAL RESOURCES LIMITED	WILLET
237174	41P09F032	(100) BATTERY MINERAL RESOURCES LIMITED	WILLET
111940	41P09L119	(100) BATTERY MINERAL RESOURCES LIMITED	JAMES
316673	41P09L139	(100) BATTERY MINERAL RESOURCES LIMITED	JAMES
175645	41P09K123	(100) BATTERY MINERAL RESOURCES LIMITED	JAMES
175646	41P09K122	(100) BATTERY MINERAL RESOURCES LIMITED	JAMES
214549	41P09K041	(100) BATTERY MINERAL RESOURCES LIMITED	JAMES
251747	41P09K083	(100) BATTERY MINERAL RESOURCES LIMITED	JAMES
263243	41P09K103	(100) BATTERY MINERAL RESOURCES LIMITED	JAMES

Tenure ID	Cell ID(s)	Holder	Township / Area
269976	41P09K021	(100) BATTERY MINERAL RESOURCES LIMITED	JAMES
269977	41P09K102	(100) BATTERY MINERAL RESOURCES LIMITED	JAMES
173643	41P09L099	(100) BATTERY MINERAL RESOURCES LIMITED	JAMES
214550	41P09K061	(100) BATTERY MINERAL RESOURCES LIMITED	JAMES
216143	41P09L079	(100) BATTERY MINERAL RESOURCES LIMITED	JAMES
309958	41P09L080	(100) BATTERY MINERAL RESOURCES LIMITED	JAMES
117303	41P09K044	(100) BATTERY MINERAL RESOURCES LIMITED	JAMES
219829	41P09K024	(100) BATTERY MINERAL RESOURCES LIMITED	JAMES
114335	41P16D247	(40) SUNVEST MINERALS CORP. , (60) BATTERY MINERAL RESOURCES LIMITED	FARR
161255	41P16D286	(40) SUNVEST MINERALS CORP. , (60) BATTERY MINERAL RESOURCES LIMITED	FARR
269257	41P16D266	(40) SUNVEST MINERALS CORP. , (60) BATTERY MINERAL RESOURCES LIMITED	FARR
309774	41P16D287	(40) SUNVEST MINERALS CORP. , (60) BATTERY MINERAL RESOURCES LIMITED	FARR
316674	41P16D246	(40) SUNVEST MINERALS CORP. , (60) BATTERY MINERAL RESOURCES LIMITED	FARR
329194	41P16D267	(40) SUNVEST MINERALS CORP. , (60) BATTERY MINERAL RESOURCES LIMITED	FARR
154998	41P09K043	(100) BATTERY MINERAL RESOURCES LIMITED	JAMES
172901	41P09K042	(100) BATTERY MINERAL RESOURCES LIMITED	JAMES
189873	41P09K023	(100) BATTERY MINERAL RESOURCES LIMITED	JAMES
239077	41P09K063	(100) BATTERY MINERAL RESOURCES LIMITED	JAMES
239078	41P09K062	(100) BATTERY MINERAL RESOURCES LIMITED	JAMES
199121	41P09L031	(100) BATTERY MINERAL RESOURCES LIMITED	MICKLE
246201	41P09L050	(100) BATTERY MINERAL RESOURCES LIMITED	MICKLE
246202	41P09L070	(100) BATTERY MINERAL RESOURCES LIMITED	MICKLE
290254	41P09L051	(100) BATTERY MINERAL RESOURCES LIMITED	MICKLE
341112	41P09L071	(100) BATTERY MINERAL RESOURCES LIMITED	MICKLE
113198	41P09L151	(100) BATTERY MINERAL RESOURCES LIMITED	MICKLE
156019	41P09L152	(100) BATTERY MINERAL RESOURCES LIMITED	MICKLE
248817	41P09L133	(100) BATTERY MINERAL RESOURCES LIMITED	MICKLE
267895	41P09L132	(100) BATTERY MINERAL RESOURCES LIMITED	MICKLE
287911	41P09L134	(100) BATTERY MINERAL RESOURCES LIMITED	MICKLE
323799	41P09L153	(100) BATTERY MINERAL RESOURCES LIMITED	MICKLE
323961	41P09L131	(100) BATTERY MINERAL RESOURCES LIMITED	MICKLE
336276	41P09L154	(100) BATTERY MINERAL RESOURCES LIMITED	MICKLE
191683	41P09L120	(100) BATTERY MINERAL RESOURCES LIMITED	JAMES
271248	41P09L140	(100) BATTERY MINERAL RESOURCES LIMITED	JAMES
131802	41P09K082	(100) BATTERY MINERAL RESOURCES LIMITED	JAMES
243711	41P09K022	(100) BATTERY MINERAL RESOURCES LIMITED	JAMES
326558	41P09K101	(100) BATTERY MINERAL RESOURCES LIMITED	JAMES
329930	41P09K121	(100) BATTERY MINERAL RESOURCES LIMITED	JAMES
211159	41P09L100	(100) BATTERY MINERAL RESOURCES LIMITED	JAMES
307630	41P09K081	(100) BATTERY MINERAL RESOURCES LIMITED	JAMES

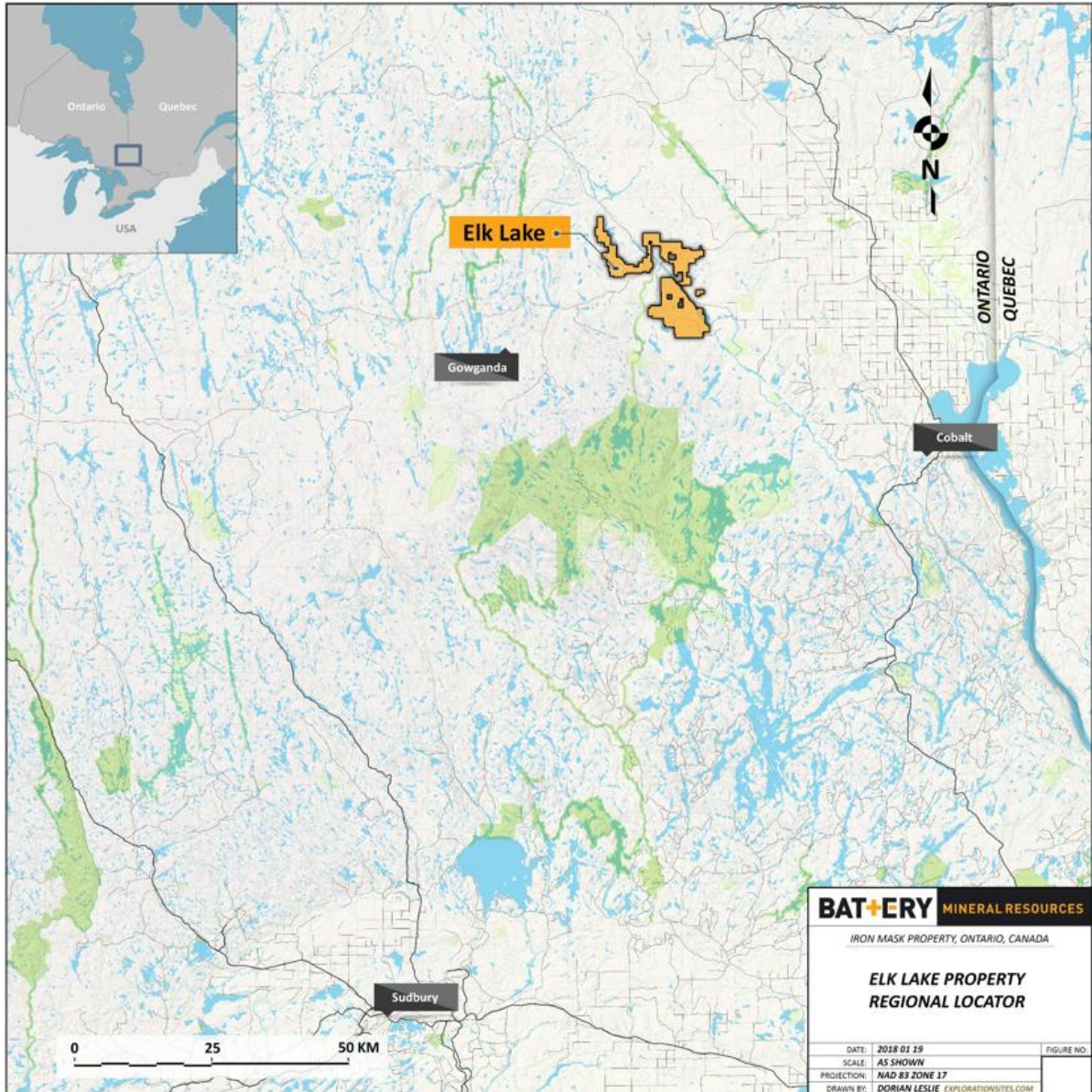
***Table 1: Elk Lake Property Cells***

## 2.2 ACCESS

There are many ways to access different parts of the property from Highway 560, an all-weather road which passes through the property. From highway 560 numerous and the town of Elk Lake, numerous forestry access roads extend further into the property.

### 2.3 LOCATION

The Elk Lake Property is, located in Mickle, Farr, James and Barber Townships.



***Figure 1: Location of the Elk Lake Property***

## 2.4 HISTORIC WORK

The Elk Lake area is host to numerous former mines, abandoned workings, and prospects. Mining started after the discovery of native silver in 1906, giving rise to Elk Lake as a mining camp. Mining peaked between 1907 and 1913, when there were about thirty active mining properties in the area. A summary of historical exploration drilling on the Elk Lake Property is provided in **Error! Reference source not found..**

Year	Operator	No. Drill-holes	Total Metres	Township
1952	Bailey Group	7	207.3	Mickle
1953	W J Hosking	2	158.8	Mickle
1954	Quebec Metallurgical Industries Ltd	11	?	Mickle
1955	Hasaga Gold Mines Ltd	6	410.1	Mickle
1955	Silverclaim L Mines Ltd	1	92.1	Mickle
1958-59	B M Welsh	3	92.1	Tudhope
1959	H R Lynch	6	125.9	Tudhope
1961-62	Le Mans Expl.	5	527.1	Mickle
1961	G S Welsh	1	30.8	Tudhope
1961	H R Lynch	1	50.0	
1961	C Cook	2	62.2	Tudhope
1961	Ethel Copper Mines Ltd	1	?	Tudhope
1962	Big Jackpot Mines Ltd	1	160.4	Tudhope
1962	Zenmac Metal Mining Co Ltd	1	38.1	
1962	L Ramp	2	371.0	
1962	Majortrans Oil & Mines Ltd	2	383.5	Mickle
1962	Zenmac Metal Mining Co Ltd	6	294.4	
1963	Ganda Silver Mines Ltd	7	43.3	Willet
1964	Gomar Mines Ltd	4	415.2	Willet
1964	Accra Expl Ltd	2	105.8	Barber
1973	Majestic Construction Ltd	2	108.2	James
1976-77	Northern Silver Fox Res Inc	12	408.7	Tudhope
1980	1980 Enr Partnership Ltd / Silver Lake Resources Inc	17	2,157.9	Mickle
1982	Silver Lake Resources Inc	68	7,110.5	Mickle
1984	Teck Explorations Ltd/Lacana Mining Corp	11	1,802.1	Mickle
1985	Silver L Res Inc	6	893.3	Mickle
1998	Cusil Venture Corp	4	1,350.0	Tudhope
1999	Garfield Pinkerton	2	80.7	Tudhope
2006	Metalex Ventures Ltd	1	44.2	Willet
2006	Norman J McBride	1	48.0	
2006	Jkate Expl Inc	2	86.5	James
2007	Amador Gold Corp	23	2,798.0	Mickle
2007-2008	Temex Res Corp	22	4,436.5	James Tudhope
2011	Silver Shield Resources Corp	10	1,285.0	Mickle
<b>Total:</b>		<b>252</b>	<b>26,177.7</b>	

***Table 2: Elk Lake Historical Drill Programs***

---

Since BMR controls a large portion of the Elk Lake silver district, a complete review of all historical work undertaken in the BMR claim block is not possible in this report. Too many companies have operated in the Elk Lake district for nearly 100 years. Rather the focus will be on areas visited by the author and other important prospects.

## **West Elk Lake**

The history of the project provided here is modified from Smith (2016), Pringle (2016a, b, c), and Larocque (2003). Overall, the area has experienced a significant amount of exploration in very specific areas primarily for silver, since the early 1900's. The first mineral discovery in the area was made in the autumn of 1906 when a showing of native silver was found in James township. Most exploration and development work were done between 1907 and 1913, although it extended the 1990's (MacKean, 1967). The following history or work relies heavily on Sergiades, 1968:

### *1908 - Shane-Darragh Claim W.D. (Cotley area, 5 miles west of Elk Lake)*

1908-13: Surface trenching and open pitting was carried out. Shaft was sunk to about 50'. An open pit 30' long and 15' deep produced 11 tons of ore. 1953: A former test pit was deepened to 79' and became No. 1 shaft. 71' of drifting on the 75' level. 26 diamond drill holes totalling 3,452' were drilled. 437 tons of ore were hoisted.

1955: No. 1 shaft was deepened to 84' and 30' of raising was done from 75' level. Diamond drilling included 5 surface holes totalling 881' and 8 underground totalling 554'.

### Production

1953 to 1955 Silver: 63,471 ozs. \$54,396. Cobalt: 1,214 lbs. \$ 2,367

### *1912 - Roy Silver Mines Ltd. (Location: SW side of Hubert Lake, 7 miles northwest of Elk Lake.*

Diamond drilling included: 8 holes, totalling 835' were drilled from surface. 10 holes, totalling 1,178' were drilled underground.

Production: 1953: 2,209 tons of development ore were stockpiled. 1954: 3007 tons of cobalt ore

were mined. 1964: 1084 ozs. of silver. 1966: 804 ozs. of silver was produced.

The following is an extract from Meyer, et al, 1998:

"Past development on the property includes 3 shafts, which were sunk around 1912. There is no record of production until Roy Silver Mines Ltd. leased the property and

---

operated the mine between 1952 and 1954. During this period, work included deepening the main shaft to 390 feet, 1200 feet of underground development, 1178 feet of underground diamond drilling and 3737 feet of surface diamond drilling. In 1954, 2472 tons of treated ore produced a carload of cobalt--copper concentrate averaging 7% cobalt and 6% copper. The property produced 1084 ounces of silver in 1964 and a further 804 ounces of silver in 1966.

In 1996, D. Chartré and R. Dufresne staked part the property. With the aid of an OPAP grant, an exploration program was carried out between August and October 1997, to re--evaluate the silver, cobalt and copper occurrences. The work included stripping, trenching and sampling, as well as line cutting and a magnetometer survey.

Fifteen areas were stripped and power washed, along a strike length of 900 m. The main vein area, at the mine site, was exposed for a length of 90 m. The vein, which is variable in width up to 30 cm., contains disseminated cobalt arsenides and chalcopryrite. Fifty--five samples taken along this vein averaged 0.7 oz. Ag/t, 1.64% Co, 3.22% Cu and 0.16% Ni. Best values obtained were 4.7 oz. Ag/t, 7.4% Co, 14.02% Cu and 0.55% Ni.

Several narrow calcite veins, containing chalcopryrite and magnetite, run parallel to, and east of, the main vein. Copper values up to 8.46 % were returned from these veins. The high copper sample also returned an anomalous gold value of 390 ppb... The veins on this property occur in cylindrical joints in the Nipissing gabbro..."

#### *Welsh-Otisse Mine Area*

History partly derived from Mlot, 2011.

"Patented Mining Claim TR224 (EB21) includes the Welsh Mine (former Otisse Mine) where several rich silver veins were discovered in 1908. Subsequent to discovery, a vertical shaft was sunk to 160 feet with a total of 1,515 of lateral and cross-cut development with the partial development of veins on the 75 ft and 150 ft levels. Operations were suspended in 1911 apparently due to litigation and the plant was burnt down around 1915."

In 1961 LeMans Exploration Ltd. dewatered the mine, installed a head frame, surveyed and mapped the underground workings and conducted face sampling, as well as underground and surface diamond drilling campaigns for silver (no assays reported), but work stopped due to a lack of funds (Le Mans, 1961).

In 1962-1963, Majortrans Oils and Mines Ltd. (Majortrans) dewatered the mine once again, sampled the underground workings on the 75 ft and 150 ft levels, and completed further underground and surface diamond drilling campaigns. Majortrans sent a 326-ton bulk sample mined from the No.4 vein on the 75 ft level to both Cobalt and Noranda with a result of 33.8 oz Ag/ton or a total of ~ 11,000 ounces mined - a quite positive result." They completed 2 diamond drill holes for 1258 feet a few hundred feet south of the Otisse shaft. A cobalt vein was logged in hole S62-9 at 819.5 feet, but no assay reported (Majortrans, 1962).

---

“In October 1963, Candore Explorations Ltd. obtained an option and, once again, resampled the underground workings (except the No.4 vein stope mined by Majortrans) and drilled 40 short underground holes totalling 2,087 ft to test vein continuity above and below the mine levels apparently with positive results.

From 1964 to 1968, Welsh Silver Mines Ltd. installed a small gravity concentrating mill near the mineshaft with a rated capacity of 20-25 tons per day. In addition, an adit with a 19° decline was sunk from surface on the No.3 vein to the 75 ft level. At that time also, the rock dump at the shaft head was reported to have between 7- and 9-ounces Ag/ton. Roughly 4,000 tons of material is estimated to reside in this rock dump, and an initial bulk test has just been conducted.

An old shaft (Welsh Mine south) occurs a short distance south of the Welsh mine shaft itself. Several rock-cut trenches occur north, east and south of the Welsh mineshaft and cobalt bloom along with possible apple-green nickel bloom can be seen on some of the cut rock faces. Silver Shield did diamond drilling in this area in 2006 and 2008.

#### *Otisse-Currie Property*

On claim L-1167183 the Otisse-Currie shaft is found. It was sunk to a depth of 100 feet with 250 feet of drifting. It is not known what economic features were exposed by this development.

#### *Cameron*

1980-1983 Silver Lake Resources conducted surface drilling, constructed underground adit at Cameron, near the south end of Silverclaim Lake, and completed a round of underground drilling (Willars, 1980, 1983).

The area that is today on claim L-3003055 has had a long history of work including small prospect shafts to 10 feet, a great deal of diamond drilling and trenching. However, the most significant feature is the production ramp driven in 1983-84 by Silver Lake Resources Inc., Teck Corporation and Lacana Mining Corporation. This ramp was driven in order to test the significant silver values encountered by diamond drilling in 1980. A number of bulk samples were taken and studies made to bring the Teck mill from Cobalt to the mine site. With the price of silver dropping the property was placed on care and maintenance and subsequently abandoned when the Teck Silver Division and Silver Lake withdrew support for silver exploration.

During 1983 a ramp decline, 9-foot-high by 14' wide, was driven for 1,049 feet to a vertical depth of 210 feet at a 20% grade (-11.5°). Lateral work consisted of 440' and raising was 109.5 feet accompanied by seventeen underground diamond drill holes totalling 3822.5 feet.

A bulk sample weighing 7.5 tons and taken from the floor of the decline for 15' long (at 720' to 735') and 6' wide assayed 11.277 oz. Ag per ton. A picked and screened



---

sample of the development material from this area and weighing 3.5 tons assayed 52.63 oz. Ag per ton (Willars, 1983). At the bottom level of the bottom of the decline and 50' to the east, the 1-N drift was driven 80' north along a strong 3" to 4" pink to grey calcite vein containing cobaltite and visible silver. A second bulk sample taken from a 20' length and 4' width of this vein, and weighing 10.3 tons, assayed 14.390 oz. Ag per ton.

West of the decline 110', a 30' drift was driven north on a vein in which niccolite was observed. A bulk sample weighing 624 pounds from a 3' width and 4' length of this vein assayed 18.075 oz Ag per ton (ibid.).

*1984 Teck Corp.* managed a 13-hole drill programme near the adit portal.

In late 2006, Silver Shield cut a grid, and conducted a preliminary exploration drilling campaign.

In September 2008 Silver Shield carried out 3,200 metres of diamond drilling focusing on an area south of Silverclaim Lake (Cameron).

#### *The Cotley Mine*

In 1908 work began at the site of the present Cotley Mine site presently located on mining claim L-1239097. Not much is known, but by 1913, 11 tons of ore was shipped from an open cut and a shaft started. In 1953 a pit was deepened and was made into the #1 shaft with a level established at 75 feet, with 71 feet of drifting and 3,425 feet of underground drilling. 437 tons of ore was hoisted with 290 tons of high-grade sent to Gowganda for milling. In 1955 the shaft was deepened to 84 feet and a 30-foot raise from the 75-foot level was made. 2,106 tons of ore was mined and milled at the Siscoe Mill in Gowganda (Larocque, 2003).

#### *The Silverclaim Copper showing*

At the north end of Silverclaim Lake a large trench running about 250 feet long and up to 6 feet wide was put down on a large vein system up to 30 inches wide. This vein contains carbonate, specularite and chalcopyrite historically grading 10% copper. This trench is located on claim L-1167182.

#### *1908-1968 Various Prospects and Small Mines*

Prospecting and underground development was done on a small scale throughout the area. There are too many prospects and companies to list individually, but it certainly is a testament to the widespread distribution of cobalt mineralization throughout the Elk Lake claim block. This work continued in some cases to the late 1960's. Small scale production consisted of silver and cobalt, up to 100 oz silver and 860 pounds of cobalt (ibid.). Isolated drill holes were completed by various small companies and individuals including Le Mans Exploration Ltd. in 1962,

*1989 – Agnico-Eagle:* Agnico-Eagle Mines Limited completed 4 surface diamond drill

---

holes totalling 1020 feet on their Leroy Mine property in Nicol and Haultain townships.

### *Otisse-Currie Property*

On claim L-1167183 the Otisse-Currie shaft is found. It was sunk to a depth of 100 feet with 250 feet of drifting. It is not known what economic features were exposed by this development.

### *Silverstrike*

The following is a summary taken from Rungis, 2008, 2003 that focused on the Silver Strike area:

In 1906, the first mineral discovery in James Township was recorded. Considerable exploration and development took place in the area from 1906-1913. Extensive pitting, trenching and shaft sinking occurred on the property at this time.

In 1907, the first geological work in Elk Lake was conducted by the Ontario Bureau of mines.

1909- 1912 Big Six Silver Cobalt Mines Ltd operated on the property. Shaft No. 1 (Big Six Shaft) was sunk to 194ft.

In 1912 a shaft was sunk to a depth of 100ft on the North East side of the property by John Gordon Donaldson. Reported assays from this shaft indicated 2,000 ounces of silver per ton. This property was later sold to The Beaver Auxiliary Mines Co. The Beaver Auxiliary Mine was operated in intervals from 1912-1927.

In 1954 James Township was partially mapped by Lawton. This same year, assessments and geological sketches of the area were completed by resident geologist Dr. Thomson.

*2006-2008 – Amador Gold Corp.* – In December 2006, Katrine Exploration and Development Inc. stripped for Amador Gold Corp. an area 100m x 10m from the #2 shaft of the Silverstrike property to the #3 shaft. The trench exposed a north-south trending, 1/2" to 1" wide calcite vein with cobalt bloom (Larocque, 2007). In 2008, Katrine Exploration and Development Inc. conducted contract location surveys for Amador Gold Corp. Samples were taken, but not assayed (Rungis, 2008).

### *Other*

In the late 1990's after the Temagami Land Caution was lifted work was conducted in the area by Lake Superior Resources Corp. who undertook a large stripping program at the top end of Silverclaim Lake.

*2003 Canadian Prospecting Ventures Inc.* – Pumped, stripped and sampled the copper trench at the north end of Silverclaim Lake (ibid.).

*1996, D. Chartré and R. Dufresne* - The Roy property is located in the NW corner of

---

BMR's Elk Lake claim block (UTM NAD 83, Zone 17 540182E, 5291737N). An exploration programme was carried out between August and October 1997, to re-evaluate the silver, cobalt and copper occurrences. The work included stripping, trenching and sampling, as well as line-cutting and a magnetometer survey (Meyer, 1998). The work and results are summarized below:

Fifteen areas were stripped and power washed, along a strike length of 900 m. The main vein area, at the mine site, was exposed for a length of 90 m. The vein, which is variable in width up to 30cm., contains disseminated cobalt arsenides and chalcopyrite. Fifty-five samples taken along this vein averaged 0.7 oz. Ag/t, 1.64% Co, 3.22% Cu and 0.16% Ni. Best values obtained were 4.7 oz. Ag/t, 7.4% Co, 14.02% Cu and 0.55% Ni. Several narrow calcite veins, containing chalcopyrite and magnetite, run parallel to, and east of, the main vein. Copper values up to 8.46 % were returned from these veins. The magnetometer survey identified two anomalous north trending zones, attributed to local increases in magnetite in the gabbro sill, which may be related to these magnetite bearing calcite veins.

The veins on this property occur in cylindrical joints in the Nipissing gabbro similar to those found in the Gowganda area.

*2006-2010 Amador Gold Corp.* - A drill program was completed on Canadian Prospecting Ventures' Silverclaim Lake property during the 2007 field season. Drilling tested historical silver workings and their strike extensions. Drilling intersected strong structures, on strike with historical workings, that locally contain high grade silver (Ag) mineralization such as 506 g Ag/tonne over 2.32m down-hole width (hole AGSC07-12), or disseminated lower grade silver over wider drilled widths, such as 63g Ag/tonne over 11.03m down-hole width in hole AGSC07-07. 22 drill holes were drilled in total.

Amador also flew VTEM airborne surveys over their Silverclaim, Silverstrike and Donovan Basin Silver Properties in the Elk Lake and Gowganda Silver Camps (Amador Gold Corp., 2009).

### **East Elk Lake – Temex Ethel/Merico area**

The area has had a long history of exploration mainly for silver, copper and gold. Most of the exploration and development work occurred around the Merico area and Ethel Copper Mine. A comprehensive review is given in Hann, 2008 and the portion relating to cobalt and silver are reproduced here:

“1909 A 100-foot shaft was sunk by Silver Alliance Mines, on a 3-inch-wide carbonate vein with silver, bornite, chalcopyrite, and “cobalt bloom” striking 76 degrees

---

to the northeast. The shaft or mine is called the “Silver Deposit” or “Northern Silver Fox” occurrence.

1909 United States Silver Mines Ltd. sank a shaft along a northeast trending silver vein, on a property northwest of the Silver Deposit, known as the Silver Jackpot Deposit. They also sank a smaller shaft to the southwest and several other pits along the vein between the two shafts (J.G. Willars, 1977). The mine was then abandoned that year.

1919 Toledo Silver Mines Ltd. originally owned the Toledo Silver Mine, which is reported to contain a 250-foot-deep shaft. Johns (1986) reported the mine dump contained a little vein material of calcite with chalcopryite, specular hematite, and traces of cobalt bloom.

1951 Silver Jackpot Mines Ltd. dewatered the Silver Jackpot shaft and discovered several bags of silver mineralisation at the bottom of the shaft (G. Johns, 1986). They performed surface stripping and blasting in the vicinity of the shaft. The veins are reported to contain carbonate, native silver, bornite, specular hematite, and chalcopryite.

1952 Ethel Copper Mines drilled 3 holes, on the edge of James Township, over the area currently containing the Ethel Copper Mine. The holes intersected significant copper.

1953 Ethel Copper Mines Ltd. carried out a self potential survey over the Toledo Mine area, and delineated an anomaly over the main showing.

1955 Stan Welsh sunk a 213-foot long diamond-drill hole through the diabase on the Sauv  Prospect.

1956-1957 Fred Walsh owned two claims, the Cummings claims in the north part of lot 10, concession V, Tudhope Township, underlain by a sill of Nipissing Diabase. A pit 10x12x23 feet intersected a small carbonate vein with silver and cobalt mineralization. Walsh completed three diamond-drill holes, totaling 81 feet, through the N 21° E trending vein.

1959 Min-Ore Ltd. held six claims in the south part of lot 12, concession V, and north part of lot 12, concession IV, Tudhope Township. Trenching was carried out, and two diamond-drill holes, totaling 330 feet, were completed. Both holes intersected massive chalcopryite up to 7.5 feet in thickness.

1959-1961 Harold Lynch owned claims covering the center of lot 11, concession VI, Tudhope Township. At present these are covered by JKate claim #1118625. He drilled 6 holes to intersect a narrow quartz-carbonate vein containing chalcopryite,

---

malachite, bornite, azurite and specular hematite. No samples or assays are given. In 1961 he drilled a seventh hole, 164 feet long, in the same area, and it intersected 1 foot of 8.27% Cu, 1.10 oz/ton Ag in a quartz carbonate vein with bornite.

1960-1962 Ethel Copper Mines conducted significant work including an inclined adit along the copper zone at Ethel Copper, James Township. More than 2300 metres of diamond drilling was completed. Hann reports small tonnages of around 3% copper were outlined.

1962 The St. Lucie Syndicate, subsequently changed to the St. Lucie Exploration Company Ltd., obtained an agreement to carry out underground development and mining operations on the Ethel Copper Mine Property. Work was performed until the surface plant was destroyed by fire in January 1963. St. Lucie then terminated the agreement.

1976-1980 Northern Silver Fox Resources Inc. conducted considerable work at the Jackpot shaft area. The included geophysics, trenching, drilling, (570 metres), and drove an adit. The best intersection was hole 77-5, which encountered 1.3 feet of 1.97 oz/ton Ag at 20 feet in the hole.

1995-1996 Garfield Pinkerton worked Merico Shaft area, where a shear zone contains carbonate veins with disseminated chalcopyrite, bornite, specularite, and cobalt bloom. Work completed included stripping, trenching, and sampling. A total of 6 trenches, up to 1 metre wide, were completed, and an area 265 metres long was stripped, 13 samples were collected. No assays were reported.

1999 J Kate Explorations completed two drill holes in the southern part of the Property, over the Paramount Occurrence. Both holes are on the southern half of claim #1225024. Hole BP-1-99, drilled to the north-northeast, at -54°, intersected 0.2 metres of 0.06% Cu, 0.1 g/t Au, 0.8 g/t Ag, and 0.13% Co, and 9.4 metres farther down the hole at and intersected 0.4 metres of 4.77% Cu, 0.189% Co, 4.2 g/t Ag and (ibid.).

2004-2005 Temex Resources Corp. optioned the Property, and conducted line-cutting, trenching, soil sampling, geophysics and lithogeochemical sampling was conducted.

2005-2008 Temex completed several drill holes.

## **2.5 REGIONAL & LOCAL GEOLOGY**

### **REGIONAL GEOLOGY**

#### **Overview**

The project area occurs within the Superior Province that is composed of northeast-trending Paleo- to Neoproterozoic gneissic complexes, granite-greenstone terranes, and sedimentary basins that were assembled by repeated island arc-microcontinent collisions (Bauer et al., 2011). The Elk Lake project is hosted by Nipissing diabase dikes that intrude Paleoproterozoic (2.5-2.2 Ga) metasedimentary rocks of the Huronian Supergroup (HS) that form a ~60,000 km<sup>2</sup> irregular-shaped siliciclastic paleo-basin, colloquially known as the Cobalt Embayment (Potter and Taylor, 2009). The HS unconformably overlies complexly folded and sub vertically dipping Neoproterozoic volcanic, intrusive, and sedimentary rocks of the Wawa-Abitibi terrane that forms the southernmost sub province of the Canadian portion of the Superior Province (Stott et al., 2010; Stott, 2011; Lodge, 2013). Both Archean rocks and the HS were intruded by Nipissing Diabase sills that are primarily tholeiitic and were sourced from MORB-type parental magma (Potter and Taylor, 2009). These intrusive rocks were emplaced along reactivated pre-HS faults at ca. 2.219 Ga (Corfu and Andrews, 1986) and are envisioned as the heat source that drove hydrothermal fluid circulation responsible for Ag-Co mineralization.

### ***Archean Rocks***

Archean rocks in the region are part of the Wawa-Abitibi sub province and dominantly comprise mafic to felsic volcanic and volcanoclastic rocks, syn- to post-volcanic intrusions and lesser siliciclastic and chemical sedimentary rocks deposited at ca. 2.7 Ga. The volcanic rocks were deposited in an oceanic arc setting during collision between the Wawa terrane and the Superior Craton in the Neoproterozoic time period. Paleotectonic settings (e.g., arc, back-arc, rifted arc) and crustal architecture and thickness varies both between and within greenstone belts in the Wawa-Abitibi terrane, which has resulted in a diverse petrogenesis of igneous rocks and related mineralization styles (Mercier-Langevin et al., 2014).

Deformation in the Archean resulted in tight folding and tilting of the rocks to sub-vertical dips. The stress field was also accommodated by thrust faulting as evidenced by duplication of rock sequences and implied in areas where strain intensity is too low to account for the subvertical rock orientations. Major thrust faults may have been reactivated from deep-seated normal faults developed during extension and deposition of the volcanic facies (Bleeker, 2015). After Archean deformation and deposition of the Huronian Supergroup, the rocks were deformed during the Proterozoic orogeny that resulted in local reactivation of faults developed in the Archean and Proterozoic (Potter and Taylor, 2009).

### ***Paleoproterozoic Huronian Supergroup***

The Huronian Supergroup comprises a southward-thickening sequence of mainly siliciclastic sedimentary rocks that reach a maximum thickness of 12 km in the southern part of the basin but have an estimated thickness of ~6 km near Cobalt, Ontario (Young et al., 2001). The HS is subdivided in Lower and Upper Huronian. The Lower Huronian comprises, from top to bottom, the Elliot Lake, Hough Lake, and Quirke Lake groups, while the Upper Huronian is solely composed of the Cobalt group. The

Lower Huronian has a restricted distribution and was deposited in a rift controlled, non-marine environment. After a significant hiatus, deposition of the more homogeneous Upper Huronian is interpreted to have taken place at a passive margin under submarine conditions (Young et al., 2001).

Inversion of the Huronian basin resulted in lower greenschist metamorphism of the sedimentary rocks and caused basin scale hydrothermal fluid flow that resulted in regionally extensive Na and Ca alteration of the rocks (Potter and Taylor, 2009).

### ***Sudbury Igneous Complex***

The Sudbury Igneous Complex is a northeast-trending, 2.5 to 3.0 km thick, ~60 km long and ~25 km wide mafic-ultramafic sheeted igneous complex that hosts the largest currently mined magmatic sulfide Ni-Cu deposits in the world. It is an erosional remnant of a larger (>15,000 km<sup>2</sup>) ~1850 Ma (Walker et al. 1991) meteor impact structure (Dietz, 1964; Dietz and Butler; 1964; Bray et al., 1966; French, 1970; Therriault et al., 2002) that comprises fractured and brecciated Archean rocks of the Abitibi terrane and Paleoproterozoic Huronian Supergroup metasediments. It differs from rift-related layered mafic complexes in that it has an overall intermediate composition, crustal isotopic signature, hydrous nature, and unusually large amount of granophytic rocks (Therriault et al., 2002). It is unlikely that the Sudbury Ni-Cu mineralization was related to the Co mineralization event at the Elk Lake project.

## **PROPERTY GEOLOGY**

The Elk Lake claim block is dominated by Nipissing diabase sills and dykes, often with a conical or basinal shape. The sills are intruded into Proterozoic Huronian Cobalt Group sedimentary rocks typical of the Cobalt Embayment. The outline of the Elk Lake Property follows that of a large body of Nipissing diabase that defines a sigmoidal map pattern. The diabase intrudes the Cobalt Group near—and at—its lower unconformable contact with the Archean basement, here represented by granitic rocks. A strong northwest-southeast lineament bisects the Property.

Mineralisation generally occurs in the diabase, often in the lower portion, but may occur in the Huronian sedimentary rocks or at the contact with the Archean basement rocks. The area is best known for high grade silver, with accessory cobalt and nickel arsenides.

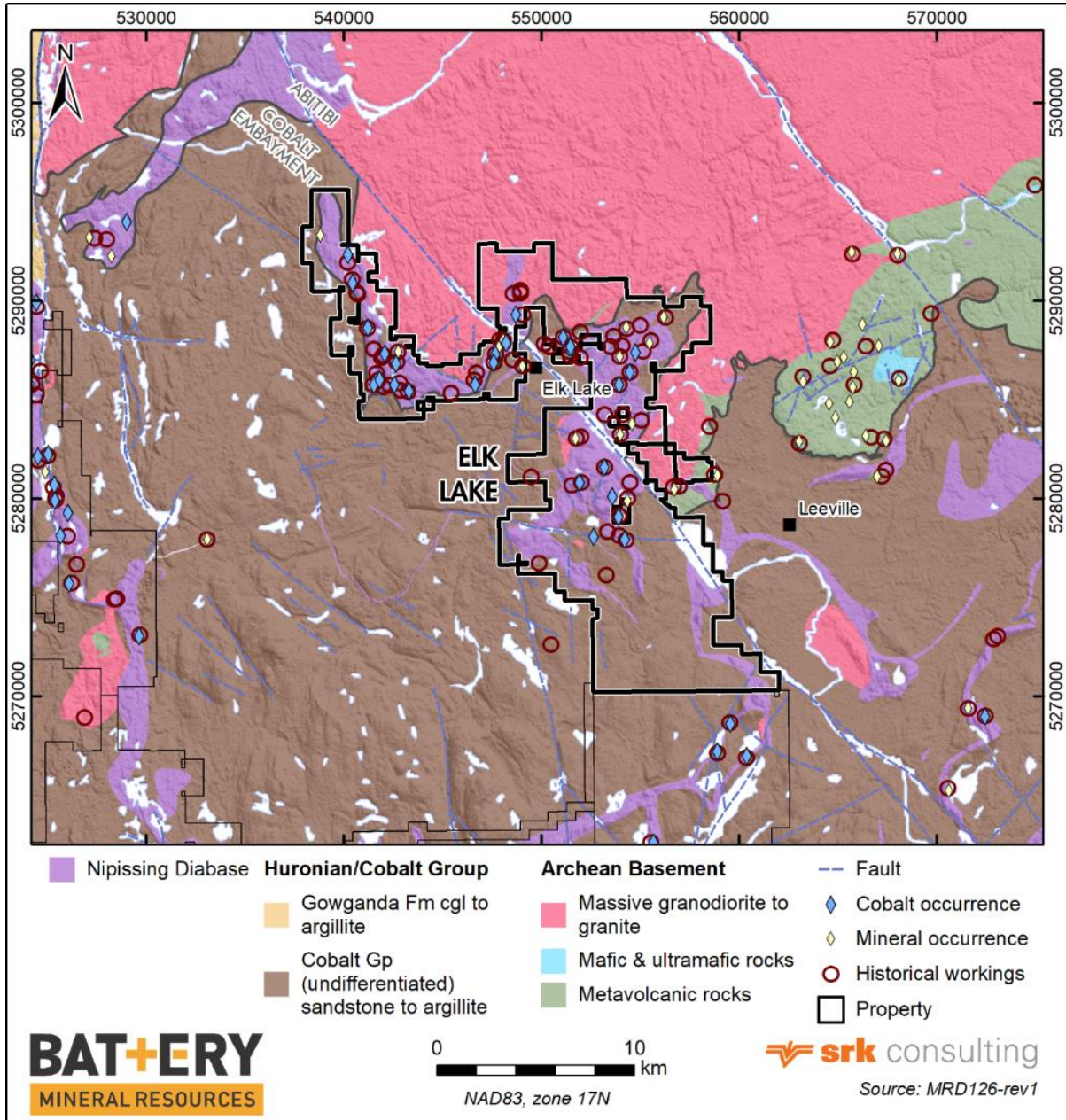
Mineralized silver-cobalt veins are strongly focused within well-developed structures. Mineralisation is dominated by narrow Cu-Au-Ag-Co-rich calcite and/or quartz veins oriented parallel to dominant faulting, fracturing or jointing, oriented differently at each location.

Three significant structures identified in mapping were confirmed by BMR drilling:

342°/54° NNW-striking Regional Fault – Youngest

078°/66° offset E-W brittle fault

017°/66° to 00°/66° (Roy Vein) – Oldest



**Figure 2: Geology of Elk Lake Project**



---

## 2.6 MINERALIZATION

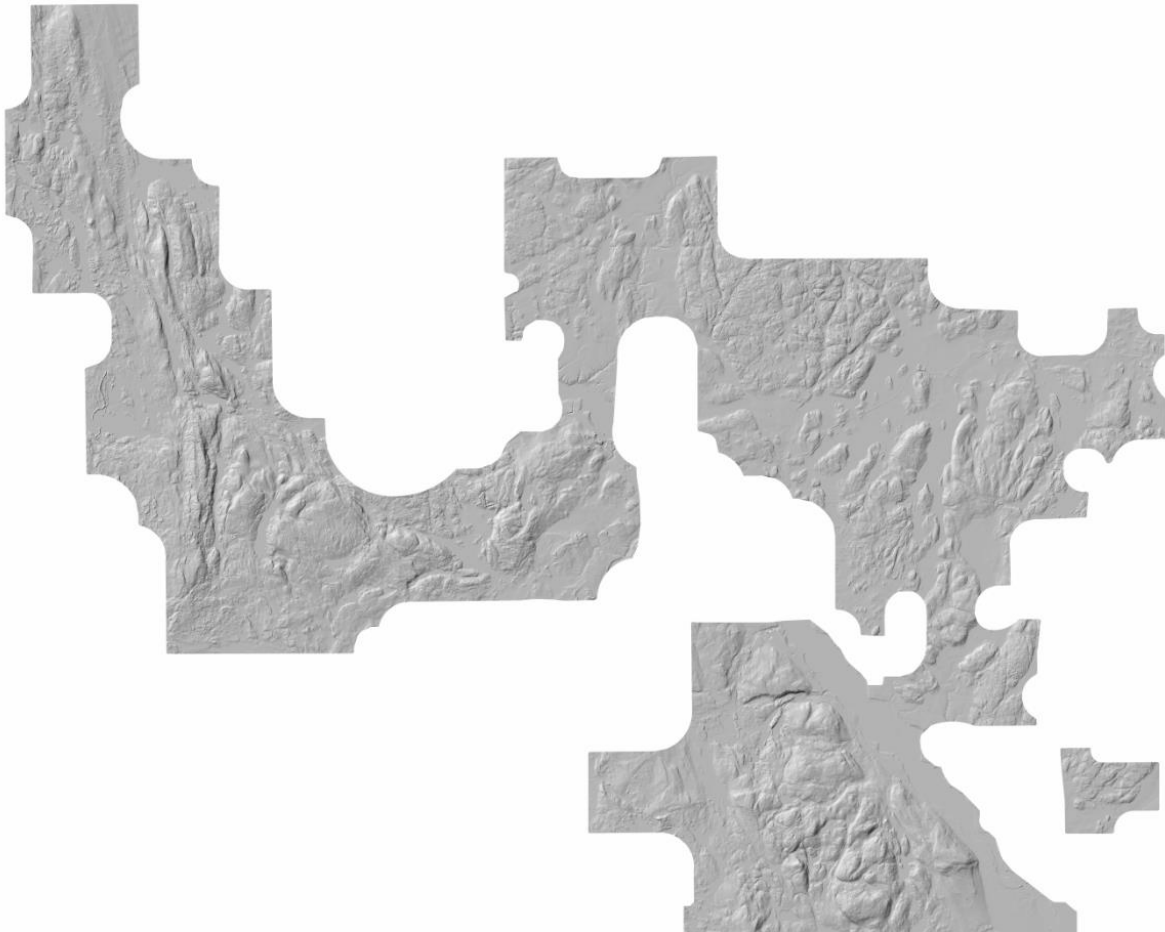
The Elk Lake claim block is dominated by complexly distributed Nipissing diabase sills and dykes, often with a conical or basinal shape. The sills are intruded into Proterozoic Huronian Cobalt Group sediments typical of the Cobalt Belt. Mineralized calcite-silver-cobalt veins are strongly focused within well developed structures.

Mineralisation is dominated by narrow Cu-Au-Ag-Co rich calcite and/or quartz veins oriented parallel to dominant faulting, fracturing or joining, different at each location. Mineralisation generally occurs in the diabase, often in the lower portion, but may occur in the Huronian sediments or in contact with the Archean basement rocks. The area is best known for high grade silver, with accessory cobalt and nickel arsenides.

### 3. OVERVIEW OF SURVEY RESULTS

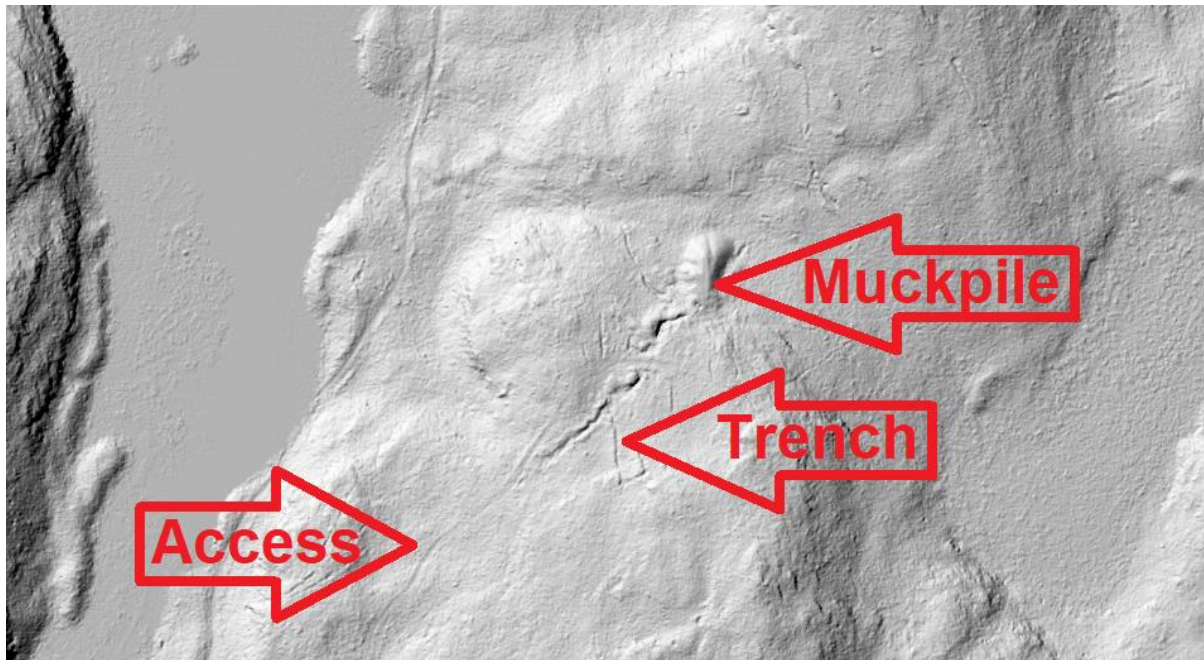
#### 3.1 SUMMARY

Between May 30<sup>th</sup> and June 14<sup>th</sup>, 2018 Airborne Imaging flew a LiDAR survey over the Elk Lake Project. The imaging encompassed an area of 119.14 square kilometers.



***Figure 3: LiDAR image***

Numerous pits, trenches, shaft and stripped areas are noted in the LiDAR image. Systematic observations of the LiDAR image indicated numerous points of access and historical work to ground truth. An example of the interpretation of the image can be seen at the historic Mapes-Johnson Silver Mine.



***Figure 4: LiDAR Image of the Mapes-Johnson Silver Mine***

### **3.2 RECOMMENDATIONS**

I would recommend systematically going through the LiDAR images to determine the locations of the any historical work. I would then recommend systematically prospecting these locations.

---

## APPENDIX A

### STATEMENT OF QUALIFICATIONS

I, C. Jason Ploeger, hereby declare that:

1. I am a professional geophysicist with residence in Larder Lake, Ontario and am presently employed as a Geophysicist and Geophysical Manager of Canadian Exploration Services Inc. of Larder Lake, Ontario.
2. I am a Practising Member of the Association of Professional Geoscientists, with membership number 2172.
3. I graduated with a Bachelor of Science degree in geophysics from the University of Western Ontario, in London Ontario, in 1999.
4. I have practiced my profession continuously since graduation in Africa, Bulgaria, Canada, Mexico and Mongolia.
5. I am a member of the Ontario Prospectors Association, a Director of the Northern Prospectors Association and a member of the Society of Exploration Geophysicists.
6. I do not have nor expect an interest in the properties and securities of **Battery Mineral Resources Limited**.
7. I am responsible for the final processing and validation of the survey results and the compilation of the presentation of this report. The statements made in this report represent my professional opinion based on my consideration of the information available to me at the time of writing this report.



C. Jason Ploeger, P.Geo., B.Sc.  
Geophysical Manager  
Canadian Exploration Services Inc.

Larder Lake, ON  
June 22, 2020

---

## APPENDIX B

### THEORETICAL BASIS AND SURVEY PROCEDURES

#### TOTAL FIELD MAGNETIC SURVEY

Lidar (light detection and ranging) is an optical remote-sensing technique that uses laser light to densely sample the surface of the earth, producing highly accurate x,y,z measurements. Lidar, primarily used in airborne laser mapping applications, is emerging as a cost-effective alternative to traditional surveying techniques such as photogrammetry. Lidar produces mass point cloud datasets that can be managed, visualized, analyzed, and shared using ArcGIS.

The major hardware components of a lidar system include a collection vehicle (aircraft, helicopter, vehicle, and tripod), laser scanner system, GPS (Global Positioning System), and INS (inertial navigation system). An INS system measures roll, pitch, and heading of the lidar system.

Lidar is an active optical sensor that transmits laser beams toward a target while moving through specific survey routes. The reflection of the laser from the target is detected and analyzed by receivers in the lidar sensor. These receivers record the precise time from when the laser pulse left the system to when it is returned to calculate the range distance between the sensor and the target. Combined with the positional information (GPS and INS), these distance measurements are transformed to measurements of actual three-dimensional points of the reflective target in object space.

The point data is post-processed after the lidar data collection survey into highly accurate georeferenced x,y,z coordinates by analyzing the laser time range, laser scan angle, GPS position, and INS information.

Laser pulses emitted from a lidar system reflect from objects both on and above the ground surface: vegetation, buildings, bridges, and so on. One emitted laser pulse can return to the lidar sensor as one or many returns. Any emitted laser pulse that encounters multiple reflection surfaces as it travels toward the ground is split into as many returns as there are reflective surfaces.

The first returned laser pulse is the most significant return and will be associated with the highest feature in the landscape like a treetop or the top of a building. The first return can also represent the ground, in which case only one return will be detected by the lidar system.

Multiple returns are capable of detecting the elevations of several objects within the laser footprint of an outgoing laser pulse. The intermediate returns, in general, are used for vegetation structure, and the last return for bare-earth terrain models.

---

The last return will not always be from a ground return. For example, consider a case where a pulse hits a thick branch on its way to the ground and the pulse does not actually reach the ground. In this case, the last return is not from the ground but from the branch that reflected the entire laser pulse.

---

## APPENDIX C

### LEICA ALS70-CM AND LEICA ALS70-HP



Leica LS70-LP Scanner

#### System performance

Leica ALS70-CM and Leica ALS70-HP systems achieve measurement rates of 500 kHz, reducing on-line flying time by up to 60%. And with scan rates that allow well-matched cross-track and along-track spacing.

Leica ALS70-HA offers an extended flying height with lower scan rates appropriate to wide-area, low-point density data acquisition.

	Model		
	ALS70-CM	ALS70-HP	ALS70-HA
Maximum Flying Height (m AGL)	1'600	3'500	5'000
Maximum Measurement Rate (kHz)	500	500	250
Field of view (degrees)	0- 75 (full angle, user adjustable)		
Roll stabilization (automatic adaptive, degrees)	75 – active FOV		
Scan patterns (user selectable)	sine, triangle, raster		
Maximum Scan Rate (Hz)	sine	200	100
	triangle	158	79
	raster	120	60
Numbers of returns	unlimited		
Number of intensity measurements	3 (first, second, third)		
Accuracy	see graph		
Storage media	removable 500 GB SSD		
Storage capacity (hours @ max measurement rate)	6		12

## Physical specifications

		Model	
		ALS70-CM ALS70-HP	ALS70-HA
Size (cm), Weight (kg)	Scanner	37 W x 68 L x 26 H 43 kg	37 W x 68 L x 27 H 43 kg
	Control Electronics	45 W x 47 D x 36 H 45 kg	
Operating Temperature	Scanner	0-40°C cabin-side temperature	
	Control Electronics	0-40°C	
Flight Management		FCMS	
Power Consumption		910 W @ 22.0- 30.3 VDC	



---

## APPENDIX D

### LIST OF MAPS (IN MAP POCKET)

#### LiDAR Images

- 1) High resolution PDF image
- 2) Cell fabric overlaying LiDAR image

**TOTAL MAPS = 2**

---

**APPENDIX E**

**LIDAR PROJECT SUMMARY**

## LiDAR Project Summary



**Airborne Imaging**  
 2700 - 61 Avenue SE Telephone: (403) 215 2960  
 Calgary, Alberta, Canada Fax: (403) 258 3189  
 T2C 4V2 [www.airborneimaginginc.com](http://www.airborneimaginginc.com)

### Project Information

<b>Project Name:</b>	Elk Lake AOI
<b>Project Number:</b>	14800
<b>Project Type:</b>	Wide Area
<b>Project Location:</b>	Sudbury Area, Ontario, Canada
<b>Project Size:</b>	119.14 sq km

### Acquisition Parameters

Date (MM/DD/YY)	Mission	Flying Height (m)	Flying Speed (knots)	Pulse Rate Rep (kHz)	Scan Freq (Hz)	Scan Angle (degree)	Side Lap %	Point Density (pts/m <sup>2</sup> )	LiDAR System
5/30/2018	0718150a	1200	150	400	47	50	50	8.3	Leica ALS70
6/2/2018	0718153a	1200	150	400	47	50	50	8.3	Leica ALS70
6/3/2018	0718154a	1200	150	400	47	50	50	8.3	Leica ALS70
6/14/2018	0718165q	1200	150	400	47	50	50	8.3	Leica ALS70
6/14/2018	0718165b	1200	150	400	47	50	50	8.3	Leica ALS70
<b>Multiple Return Capabilities:</b>		YES		<b>Number of returns recorded:</b>		Maximum 4			

### Geodetic Control

<b>Horizontal Datum:</b>	Nad83 CSRS	<b>Vertical Datum:</b>	CGVD28
<b>Geoid Model:</b>	HT2.0	<b>UTM Zone:</b>	17
<b>Note: We established a local geodetic network fixed to the following control:</b>			
<b>Station ID</b>	<b>Lat</b>	<b>Long</b>	<b>Ellp Height</b>
ELKL	47 43 51.32429	-80 20 05.32712	262.249
LISK	47 30 35.06770	-79 40 49.93284	169.947

### Calibration Methodology

Airborne Imaging performs a complete calibration on every LiDAR acquisition flight, data is acquired over a calibration site flown with at least two passes in opposite directions before and after the flight. Any error in the attitude of the aircraft (roll, pitch and heading) can be observed and corrected for within system specifications. To statistically quantify the accuracy, we compare the LiDAR elevations with independently surveyed ground points. A GPS mounted truck collects data while driving on an open road. The kinematic positions on the road are post-processed from a nearby base station (common to the aerial survey)

### Accuracy

<b>Horizontal Accuracy, 95% or 2σ:</b>	35 cm
<b>Fundamental Vertical Accuracy (on flat hard surfaces), 95% or 2σ:</b>	15 cm

# Deliverables

**Point Cloud (LAS v1.2, ASPRS Classes)**

**50cm Grids (XYZ ASCII), Bare Earth and Full Feature**

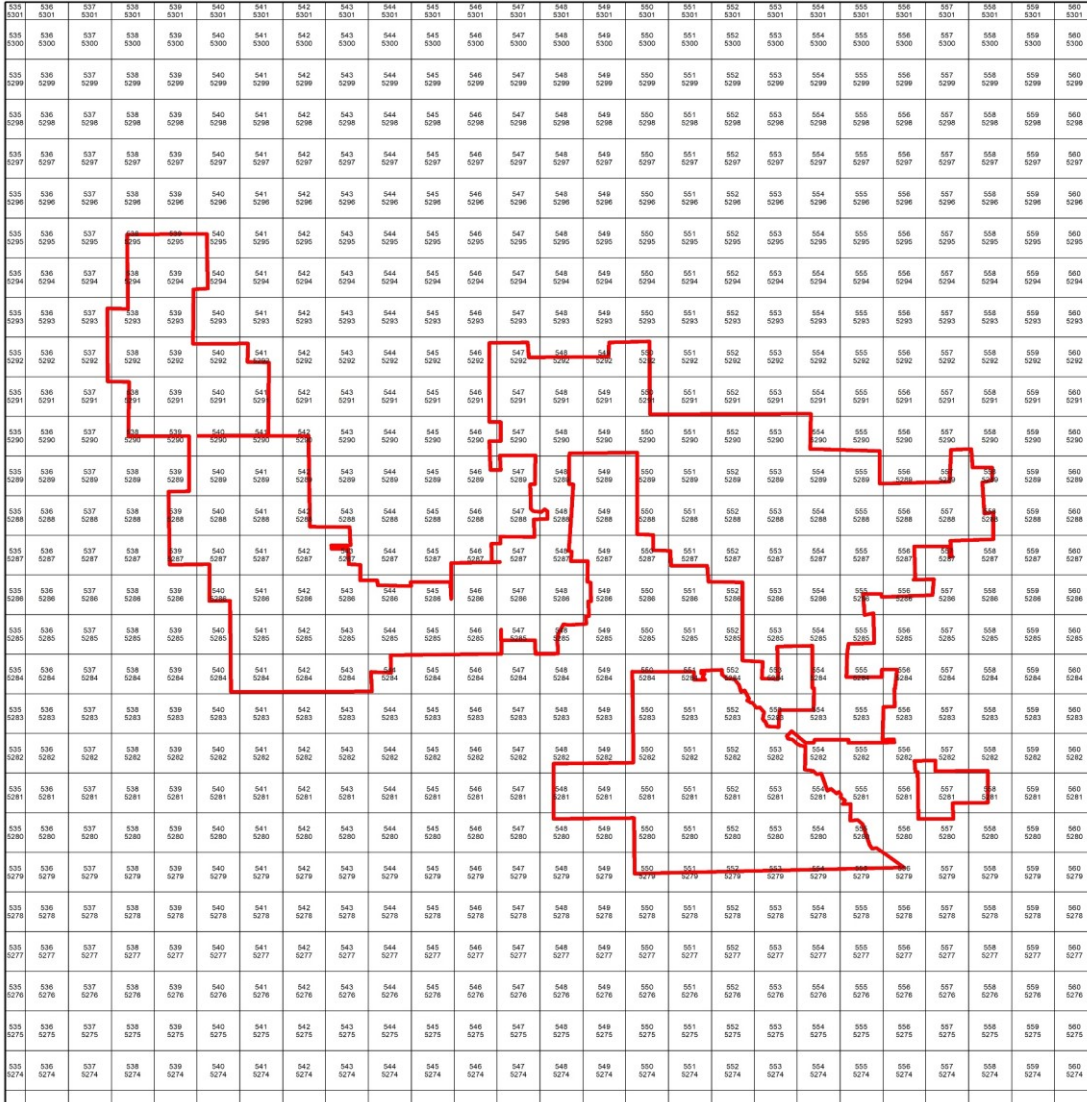
**50cm Hillshade Images (Geotiffs), Bare Earth and Full Feature**

**50 cm Contours (shp)**

**Shapefiles (Tile Index , Project Boundary)**

Summary Produced:

August 27, 2018



**14800 - Elk Lake - Battery Minerals**

The Red outline represents the extent of the data delivered.

1:125,000