

We are committed to providing [accessible customer service](#).

If you need accessible formats or communications supports, please [contact us](#).

Nous tenons à améliorer [l'accessibilité des services à la clientèle](#).

Si vous avez besoin de formats accessibles ou d'aide à la communication, veuillez [nous contacter](#).

2018 work report

On sept. 2 2018 myself Gerald Lecours and David Lecours left Lac La Biche Ab. Driving my car. We traveled up to Winipeg where we slept in the car for a few hours. From there we drove up to Shreiber where we slept at the Sunset Motel.

On the 4 th. Sep. we drove up to Sturgeon Falls where we slept at the Lincoln Motel

On the 5 th. Sep. we drove to Timmins to go to the M.N.D.M. office to pick up the Beep Matt wich we had reserved prior to our departure. From there we proceeded to drive to Hearst on. Where we bought few supplies and groceries.

The 6 th. Sep. started with renting a U-Haul truck so we could bring the argo that we had rented from Prouxl Argo Sales. We brought the argo to the start of the winter trail access , and went back to town to return the U-Hauland trailer, We picked up the car and drove back to argo. From there we proceeded to go up to the claim and set up camp at the Decoy showing.

On the morning of sep. 7 th. We started with trying the beep matt over the Decoy Showing, situated on claim# 247186 . I had hoped that the manganocolumbite crystal that are present (some of wich are up to 15 cm. long.) would be detected from its magnetic properties, but unfortunately it did not respond to the beep matt. So we then went to the B.M. Showing situated on claim #345171 where I wanted to possibly trace out the mafic volcanic sulphide horizon that we had exposed in 2017. But there again beep matt was unsuccessful in detecting anything even though the sulphide horizon was uncovered from any overburden and pyrite and pyrrotite were seen by the naked eyes. (I wondered if the machine was working properly since I had used the beep matt before , and it would pick up similar sulphide horizon that we are finding here. Then we went to the Moskito showing situated on claim #158481 , and again tried the beep matt without any results being found. As we were walking around the Moskito showing aprox. 50 m. West and 20 m. South of the Moskito showing we located a small zoned pegmatite exposed for about 1.3 m. wide and 1 m. long under a windfall tree. We took 2 samples, #108-1, 108-2. Manual stripping was started to try and expose more of the pegmatite , but because of deeper overburden and numerous roots being present the work was stopped without any favorable results.

On the 8 sep. we again took the beep matt and set off walking East from the Decoy showing. We where heading for the creek that is situated aprox. 1 km. , running mostly North-South direction. Once we arrived at the creek we proceeded Southward along the creek while looking on both sides for outcrops. On claim #345172 we located some outcrops, we dug several small pits mostly moss covered , and succeeded in locating a pegmatite. 2 samples were taken #108-3, 108-4. After we continued Southward following the creek until we hit the trail that connects to the winter trail and finally came back to the Decoy Showing.

Sep. 9 was spent on West side of Decoy Showing. On claim #509861,509866,509848, various outcrops were encountered. and 3 samples were taken #lo8-5,lo8-6,lo8-7 from a pegmatite of size unknown since too much overburden was present to permit digging pits. Again no luck detecting anything with the beep matt.

On our last work day there sep. 10 we went with the beep matt again I don't know why but anyway. On the north side of the Decoy Showing mostly on claim #109912,325879,190982 we did locate a few outcrops but no pegmatite was observed after digging a few pits. Nothing was detected with the beep matt and no samples were taken that day

On the 11 sep. we packed up camp , went back to town , gave a friend of my son 50 \$ to come and pick up the argo and return it to rental place.

On the 12,13,14 sep. we went to prospect other properties which are not included or accounted in this report.

On the 15 sep we started driving back to Timmins to drop off the beep matt at the M.N.D.M. office. From there we proceeded to go back to Alberta, we slept in the car along the way and got back to Lac La Biche Ab.on the 17 th sep.

Assessment Work Report Submission Revision

Assessment Work Report number 3239

Transaction i.d. 52914 for work performed in 2018

Lowther Twp. Pegmatite

Report completed on April 1 2020

Author Gerald Lecours (300419)

The work was performed on the following claims

247186 Lowther Twp. Cell # 42G05J025 REGISTERED UNDER 2004402 Ontario Inc.

345171 Lowther Twp. Cell# 42G05J024 registered under 2004402 Ontario Inc.

345172 Lowther Twp. Cell # 42G05J046 registered under 2004402 Ontario Inc.

158481 Lowther Twp. Cell # 42G05J045 Registered under 2004402 Ontario Inc.

109912 Lowther Twp. Cell# 42G05J004 Registered under 2004402 Ontario Inc.

325879 Lowther Twp. Cell # 42G05J005 Registered under 2004402 Ontario Inc.

190982 Lowther Twp. Cell # 42G05J006 Registered under 2004402 Ontario Inc.

247187 Lowther Twp. Cell # 42G05J066 Registered under 2004402 Ontario Inc.

203176 Lowther Twp. Cell # 42G05J065 Registered under 2004402 Ontario Inc.

509861 Lowther Twp. Cell # 42G05J083 Registered under Gerald Lecours

509866 Lowther Twp. Cell # 42G05J063 Registered under Gerald Lecours

509848 Lowther Twp. Cell # 42G05J043 Registered under Gerald Lecours

509869 Lowther Twp. Cell # 42G05J084 Registered under Gerald Lecours

509851 Lowther Twp. Cell # 42G05J027 Registered under Gerald Lecours

LOCATIO ACCESS

The Lowther Twp. Pegmatite is located in the superior province of southeastern Ontario, 20 km. South of Hearst On. The property is accessible by access road off of Highway 583 South for 20 km. From Hearst

and then turn East on Concession 6 Lowther Twp. For 2 km. And then by a 16 km. Exploration trail that can be accessed in summer by A.T.V. in summer months and by snowmobile in winter months.

SUMMARY OF SAMPLES TAKEN

Sample LO8-1 and LO8-2 were taken from a small zoned pegmatite situated at G.P.S. Lat. 49.49143 N Lon. 83.72478W

LO8-1 Was a sample consisting mostly of feldspar

LO8-2 Was a sample of the quartz zone that had some small green unknown mineral present

LO8-3 and LO8-4 were taken from a small pegmatite situated at Lat. 49.48627 N and Lon. 83.73359 W

LOW-3 Is a sample of the feldspar that was present in the pegmatite and was light orange in colour

LO8-4 Is a sample of the feldspar that was present in the pegmatite and is white –grey in colour

LO8-5,LO8-6,LO8-7 Are samples taken from a pegmatite situated at G.P.S. Lat .49.48627 N and Lon. 83.73359 W. All 3 samples were taken from feldspar in the pegmatite very similar to each other and white in colour .

SUMMARY OF COSTS

Gas \$ 808.73

Food \$ 324.40

Motel \$ 168.37

Assays \$ 322.94

Rental \$ 873.92

Supplies \$ 75.46

Labour 13 days two men @ \$300/day \$ 7800.00

BEEP MATT SURVEY

Sep.7 , the beep matt survey conducted that day was performed on outcrop that had no overburden present , and in dry condition. The rock type was metasediment host rock with pegmatites present and some mafic volcanic. No measurement were obtained from the beep matt since nothing was detected using it.

Sep. 8 The beep matt survey conducted that day was done on both sides of a creek it consisted of mature forest cover in dry condition. The character of overburden was black dirt and moss and in dry

condition. Again no measurement were obtained or recorded from the beep matt since nothing was detected .The rock type uncovered was granite with one pegmatite that was located on claim # 345172 .

Sep. 9

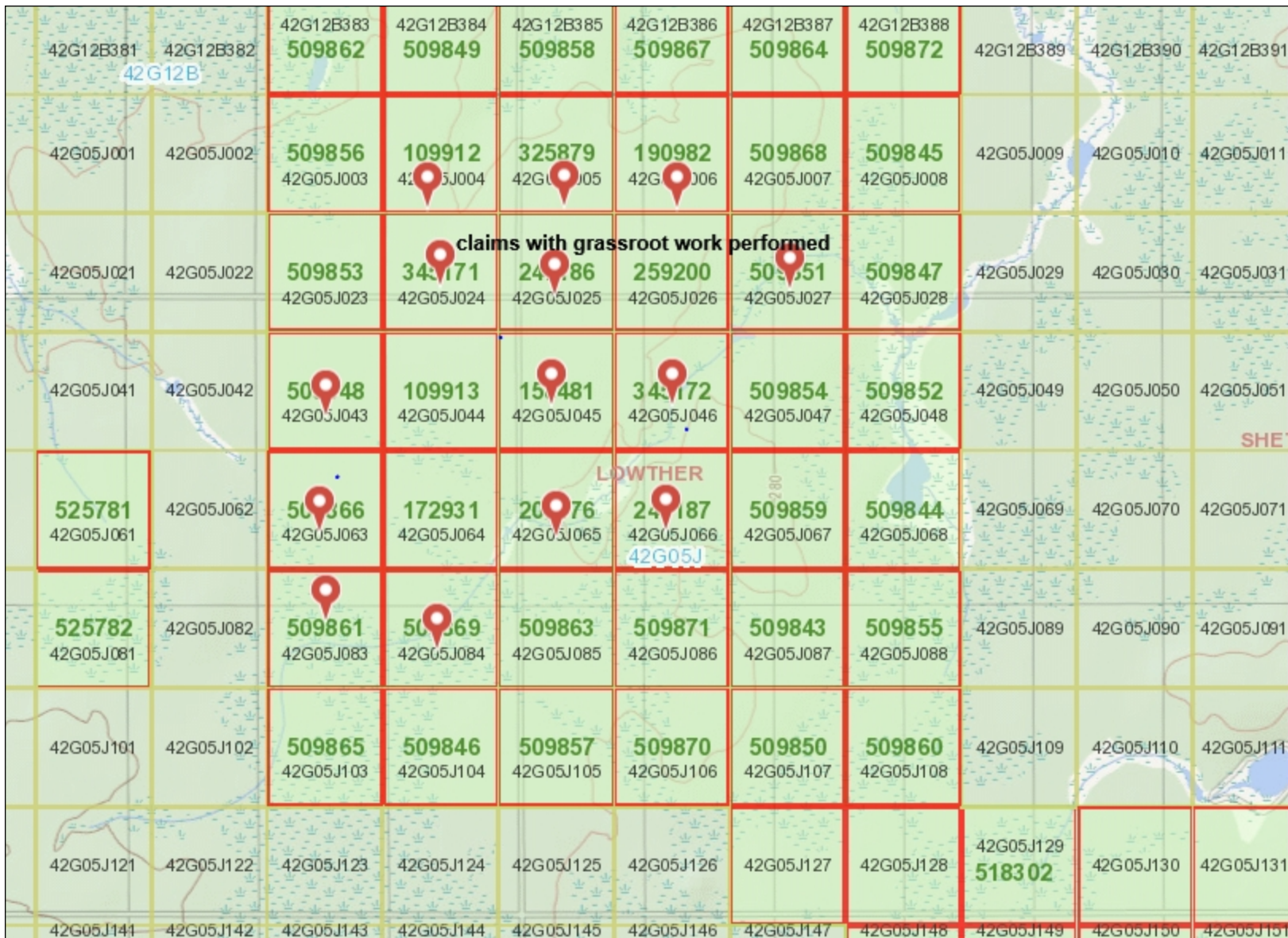
The beep matt survey that day was conducted in mature forest, with overburden consisting of black dirt in dry condition. Again no measurement were taken or recorded from the beep matt since nothing was detected using it. On claim # 509866 the outcrop encountered was feldspar with one pegmatite present and was covered with moss and black dirt in dry condition.

Sep. 10

The beep matt survey that day was conducted in mature forest , with overburden consisting of black dirt in dry condition. No measurement were taken or recorded since the beep matt failed to detect anything . The outcrop observed were granite in composition with some moss cover.

Submitted by Gerald Lecours (300419)

Submitted for 2004404 Ontario Inc. (406019)



Legend

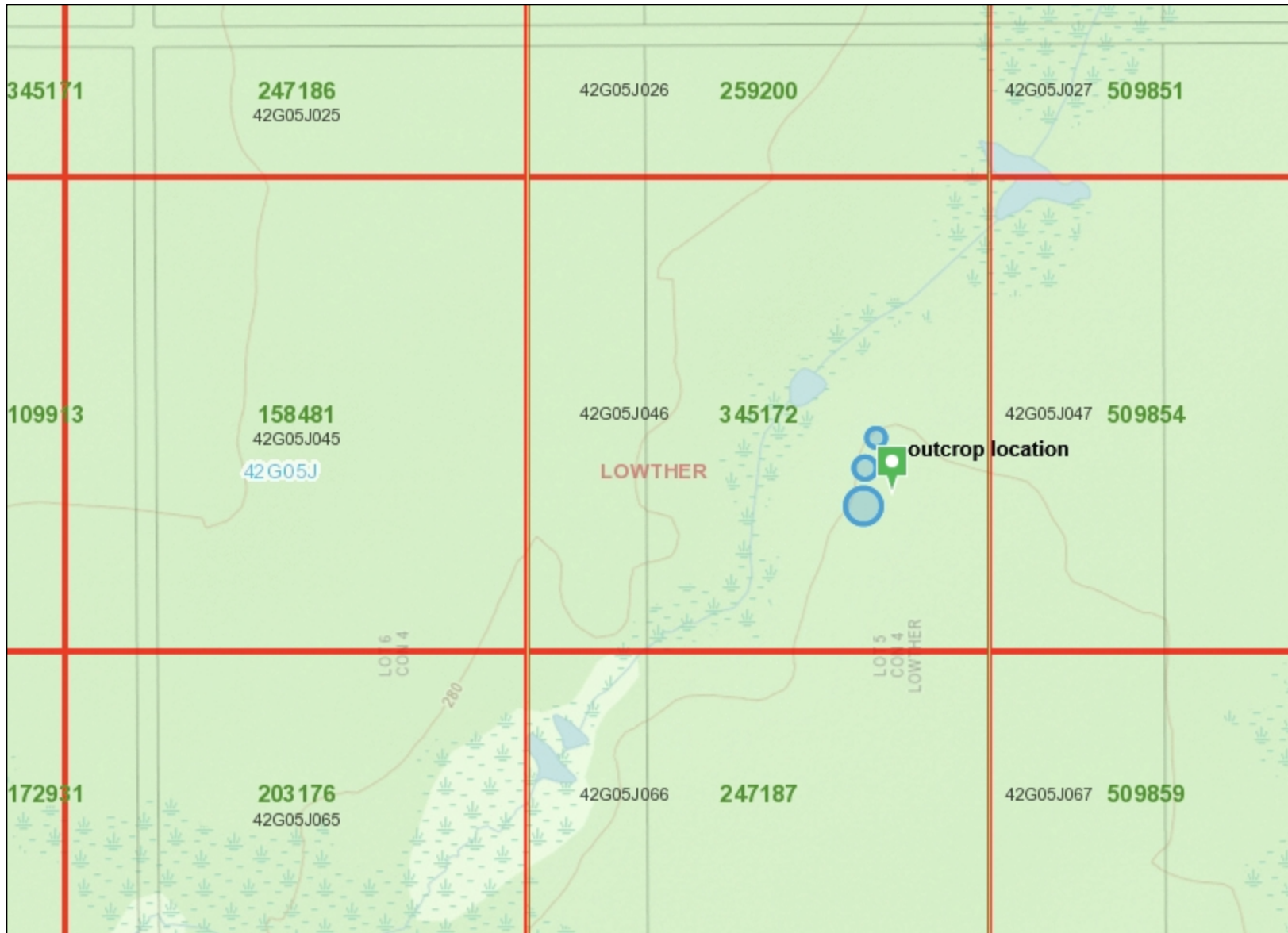
- Provincial Grid Cell**
 - Available
 - Pending
 - Unavailable
- Mining Claim**
 - Mining Claim
 - Boundary Claim
- Alienation**
 - Withdrawal
 - Notice
- ENDM Administrative Boundaries**
 - ENDM Townships and Areas
 - Geographic Lot Fabric
 - UTM Grid 1K
 - UTM Grid 10K
 - Mining Division
 - Mineral Exploration and Development Region
 - CLUPA Protected Area - Far North
 - Resident Geologist District
 - Federal Land Other
 - Native Reserves
- AMIS Sites**
 - AMIS Sites
 - AMIS Features
 - Drill Hole
 - Mineral Occurrences
- MLAS Mining History**
 - Withdrawal - History
 - Notice - History
 - Mining Claim - History
 - Mining Land Tenure - History
 - Legacy Claim
- Provincial Grid**
 - Provincial Grid 250K
 - Provincial Grid 50K
 - Provincial Grid Group
- Land Tenure**
 - Surface Rights
 - Mining Rights
 - Mining and Surface Rights
 - Order-in-Council

Those wishing to register mining claims should consult with the Provincial Mining Recorders' Office of the Ministry of Energy, Northern Development and Mines for additional information on the status of the lands shown hereon. This map is not intended for navigational, survey, or land title determination purposes as the information shown on this map is compiled from various sources. Completeness and accuracy are not guaranteed. Additional information may also be obtained through the local Land Titles or Registry Office, or the Ministry of Natural Resources and Forestry. The information shown is derived from digital data available in the Provincial Mining Recorders' Office at the time of downloading from the Ministry of Energy, Northern Development and Mines web site.



Imagery Copyright Notices: Ontario Ministry of Natural Resources and Forestry; NASA Landsat Program; First Base Solutions Inc.; Aéro-Photo (1961) Inc.; DigitalGlobe Inc.; U.S. Geological Survey.
© Queen's Printer for Ontario, 2020





Legend

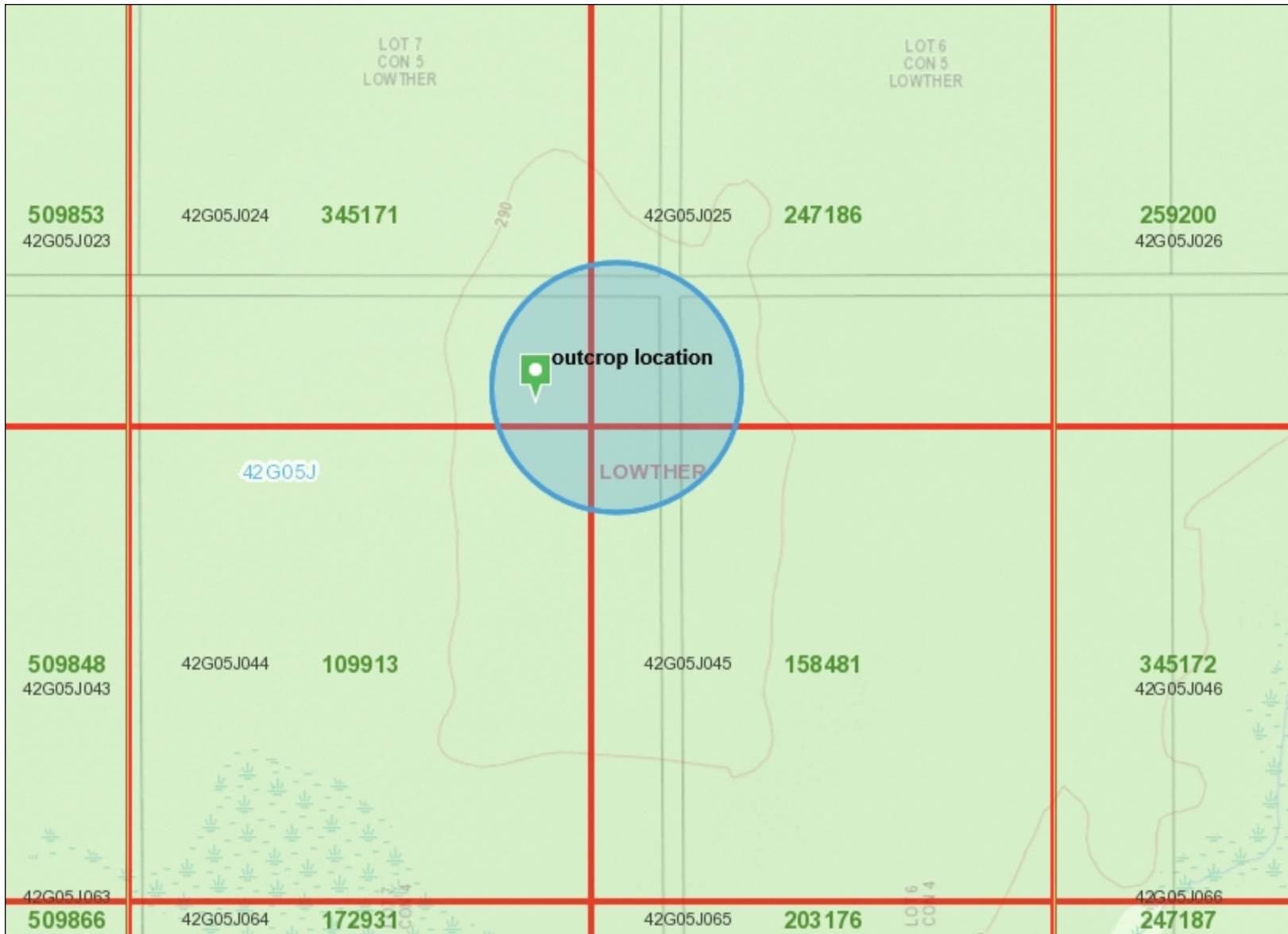
- Provincial Grid Cell**
 - Available
 - Pending
 - Unavailable
- Mining Claim**
 - Mining Claim
 - Boundary Claim
- Alienation**
 - Withdrawal
 - Notice
- ENDM Administrative Boundaries**
 - ENDM Townships and Areas
 - Geographic Lot Fabric
 - UTM Grid 1K
 - UTM Grid 10K
 - Mining Division
 - Mineral Exploration and Development Region
 - CLUPA Protected Area - Far North
 - Resident Geologist District
 - Federal Land Other
 - Native Reserves
- AMIS Sites**
 - AMIS Sites
 - AMIS Features
 - Drill Hole
 - Mineral Occurrences
- MLAS Mining History**
 - Withdrawal - History
 - Notice - History
 - Mining Claim - History
 - Mining Land Tenure - History
 - Legacy Claim
- Provincial Grid**
 - Provincial Grid 250K
 - Provincial Grid 50K
 - Provincial Grid Group
- Land Tenure**
 - Surface Rights
 - Mining Rights
 - Mining and Surface Rights
 - Order-in-Council

Those wishing to register mining claims should consult with the Provincial Mining Recorders' Office of the Ministry of Energy, Northern Development and Mines for additional information on the status of the lands shown hereon. This map is not intended for navigational, survey, or land title determination purposes as the information shown on this map is compiled from various sources. Completeness and accuracy are not guaranteed. Additional information may also be obtained through the local Land Titles or Registry Office, or the Ministry of Natural Resources and Forestry. The information shown is derived from digital data available in the Provincial Mining Recorders' Office at the time of downloading from the Ministry of Energy, Northern Development and Mines web site.



Imagery Copyright Notices: Ontario Ministry of Natural Resources and Forestry; NASA Landsat Program; First Base Solutions Inc.; Aéro-Photo (1961) Inc.; DigitalGlobe Inc.; U.S. Geological Survey.
© Queen's Printer for Ontario, 2020





Legend

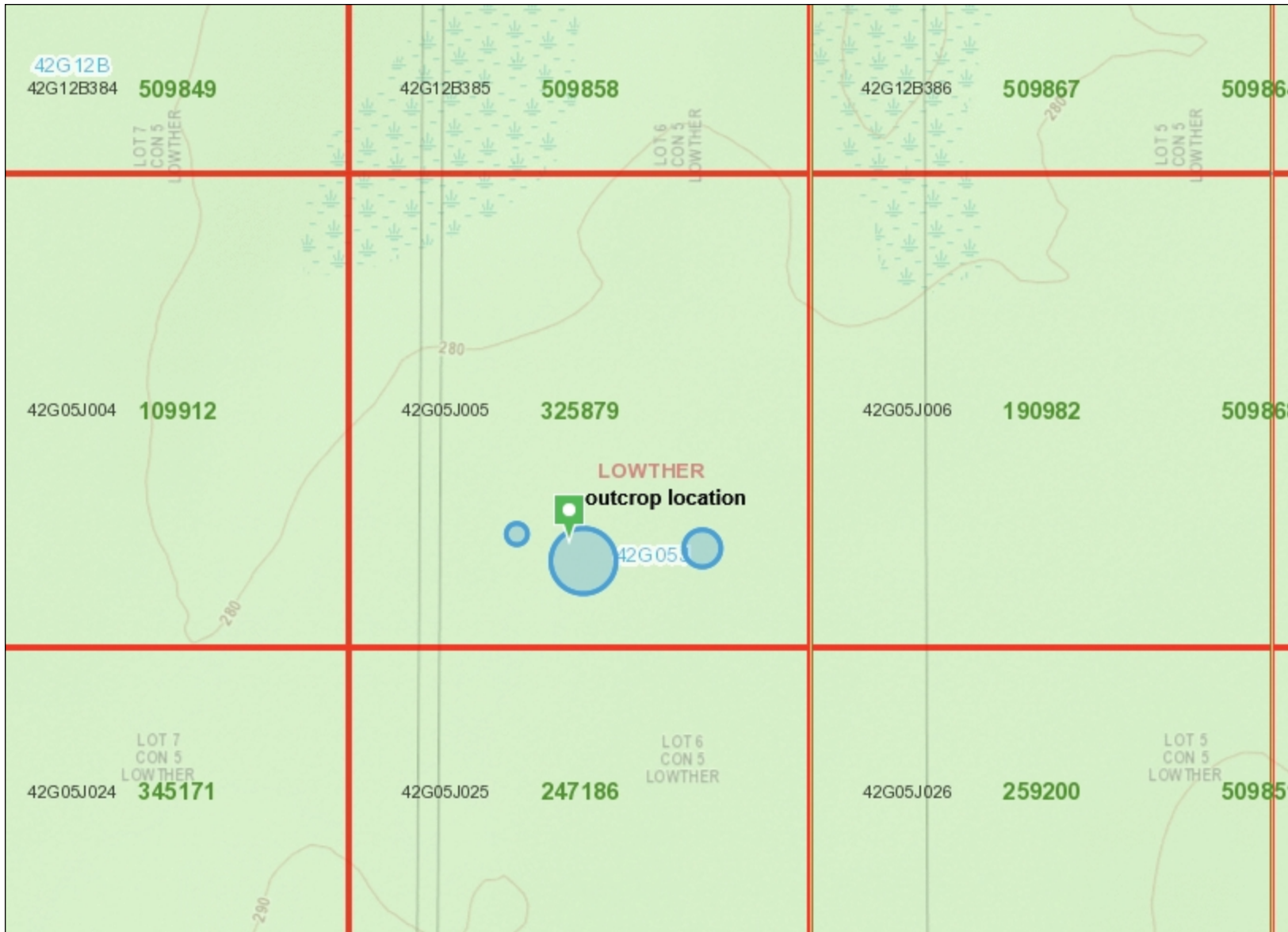
- Provincial Grid Cell**
 - Available
 - Pending
 - Unavailable
- Mining Claim**
 - Mining Claim
 - Boundary Claim
- Alienation**
 - Withdrawal
 - Notice
- ENDM Administrative Boundaries**
 - ENDM Townships and Areas
 - Geographic Lot Fabric
 - UTM Grid 1K
 - UTM Grid 10K
 - Mining Division
 - Mineral Exploration and Development Region
 - CLUPA Protected Area - Far North
 - Resident Geologist District
 - Federal Land Other
 - Native Reserves
- AMIS Sites**
 - AMIS Sites
 - AMIS Features
 - Drill Hole
 - Mineral Occurrences
- MLAS Mining History**
 - Withdrawal - History
 - Notice - History
 - Mining Claim - History
 - Mining Land Tenure - History
 - Legacy Claim
- Provincial Grid**
 - Provincial Grid 250K
 - Provincial Grid 50K
 - Provincial Grid Group
- Land Tenure**
 - Surface Rights
 - Mining Rights
 - Mining and Surface Rights
 - Order-in-Council

Those wishing to register mining claims should consult with the Provincial Mining Recorders' Office of the Ministry of Energy, Northern Development and Mines for additional information on the status of the lands shown hereon. This map is not intended for navigational, survey, or land title determination purposes as the information shown on this map is compiled from various sources. Completeness and accuracy are not guaranteed. Additional information may also be obtained through the local Land Titles or Registry Office, or the Ministry of Natural Resources and Forestry. The information shown is derived from digital data available in the Provincial Mining Recorders' Office at the time of downloading from the Ministry of Energy, Northern Development and Mines web site.



Imagery Copyright Notices: Ontario Ministry of Natural Resources and Forestry; NASA Landsat Program; First Base Solutions Inc.; Aéro-Photo (1961) Inc.; DigitalGlobe Inc.; U.S. Geological Survey.
© Queen's Printer for Ontario, 2020





Legend

- Provincial Grid Cell**
 - Available
 - Pending
 - Unavailable
- Mining Claim**
 - Mining Claim
 - Boundary Claim
- Alienation**
 - Withdrawal
 - Notice
- ENDM Administrative Boundaries**
 - ENDM Townships and Areas
 - Geographic Lot Fabric
 - UTM Grid 1K
 - UTM Grid 10K
 - Mining Division
 - Mineral Exploration and Development Region
 - CLUPA Protected Area - Far North
 - Resident Geologist District
 - Federal Land Other
 - Native Reserves
- AMIS Sites**
 - AMIS Sites
 - AMIS Features
 - Drill Hole
 - Mineral Occurrences
- MLAS Mining History**
 - Withdrawal - History
 - Notice - History
 - Mining Claim - History
 - Mining Land Tenure - History
 - Legacy Claim
- Provincial Grid**
 - Provincial Grid 250K
 - Provincial Grid 50K
 - Provincial Grid Group
- Land Tenure**
 - Surface Rights
 - Mining Rights
 - Mining and Surface Rights
 - Order-in-Council

Those wishing to register mining claims should consult with the Provincial Mining Recorders' Office of the Ministry of Energy, Northern Development and Mines for additional information on the status of the lands shown hereon. This map is not intended for navigational, survey, or land title determination purposes as the information shown on this map is compiled from various sources. Completeness and accuracy are not guaranteed. Additional information may also be obtained through the local Land Titles or Registry Office, or the Ministry of Natural Resources and Forestry. The information shown is derived from digital data available in the Provincial Mining Recorders' Office at the time of downloading from the Ministry of Energy, Northern Development and Mines web site.

0 0.30 km

Projection: Web Mercator



Imagery Copyright Notices: Ontario Ministry of Natural Resources and Forestry; NASA Landsat Program; First Base Solutions Inc.; Aéro-Photo (1961) Inc.; DigitalGlobe Inc.; U.S. Geological Survey.

© Queen's Printer for Ontario, 2020

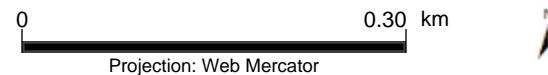




Legend

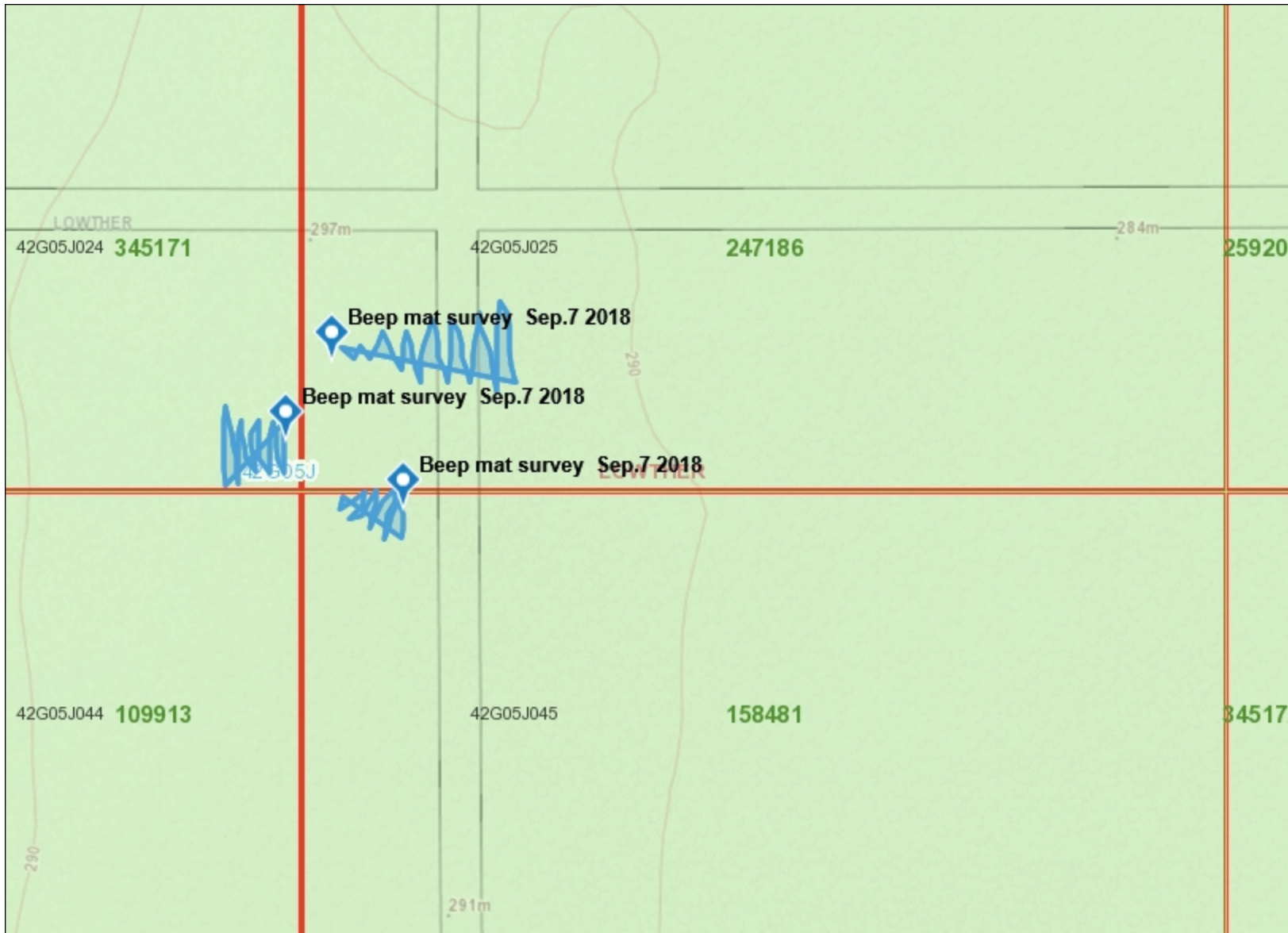
- Provincial Grid Cell**
 - Available
 - Pending
 - Unavailable
- Mining Claim**
 - Mining Claim
 - Boundary Claim
- Alienation**
 - Withdrawal
 - Notice
- ENDM Administrative Boundaries**
 - ENDM Townships and Areas
 - Geographic Lot Fabric
 - UTM Grid 1K
 - UTM Grid 10K
 - Mining Division
 - Mineral Exploration and Development Region
 - CLUPA Protected Area - Far North
 - Resident Geologist District
 - Federal Land Other
 - Native Reserves
- AMIS Sites**
 - AMIS Sites
 - AMIS Features
 - Drill Hole
 - Mineral Occurrences
- MLAS Mining History**
 - Withdrawal - History
 - Notice - History
 - Mining Claim - History
 - Mining Land Tenure - History
 - Legacy Claim
- Provincial Grid**
 - Provincial Grid 250K
 - Provincial Grid 50K
 - Provincial Grid Group
- Land Tenure**
 - Surface Rights
 - Mining Rights
 - Mining and Surface Rights
 - Order-in-Council

Those wishing to register mining claims should consult with the Provincial Mining Recorders' Office of the Ministry of Energy, Northern Development and Mines for additional information on the status of the lands shown hereon. This map is not intended for navigational, survey, or land title determination purposes as the information shown on this map is compiled from various sources. Completeness and accuracy are not guaranteed. Additional information may also be obtained through the local Land Titles or Registry Office, or the Ministry of Natural Resources and Forestry. The information shown is derived from digital data available in the Provincial Mining Recorders' Office at the time of downloading from the Ministry of Energy, Northern Development and Mines web site.



Imagery Copyright Notices: Ontario Ministry of Natural Resources and Forestry; NASA Landsat Program; First Base Solutions Inc.; Aéro-Photo (1961) Inc.; DigitalGlobe Inc.; U.S. Geological Survey.
© Queen's Printer for Ontario, 2020

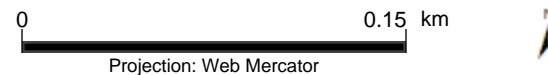




Legend

- Provincial Grid Cell**
 - Available
 - Pending
 - Unavailable
- Mining Claim**
 - Mining Claim
 - Boundary Claim
- Alienation**
 - Withdrawal
 - Notice
- ENDM Administrative Boundaries**
 - ENDM Townships and Areas
 - Geographic Lot Fabric
 - UTM Grid 1K
 - UTM Grid 10K
 - Mining Division
 - Mineral Exploration and Development Region
 - CLUPA Protected Area - Far North
 - Resident Geologist District
 - Federal Land Other
 - Native Reserves
- AMIS Sites**
 - AMIS Sites
 - AMIS Features
 - Drill Hole
 - Mineral Occurrences
- MLAS Mining History**
 - Withdrawal - History
 - Notice - History
 - Mining Claim - History
 - Mining Land Tenure - History
 - Legacy Claim
- Provincial Grid**
 - Provincial Grid 250K
 - Provincial Grid 50K
 - Provincial Grid Group
- Land Tenure**
 - Surface Rights
 - Mining Rights
 - Mining and Surface Rights
 - Order-in-Council

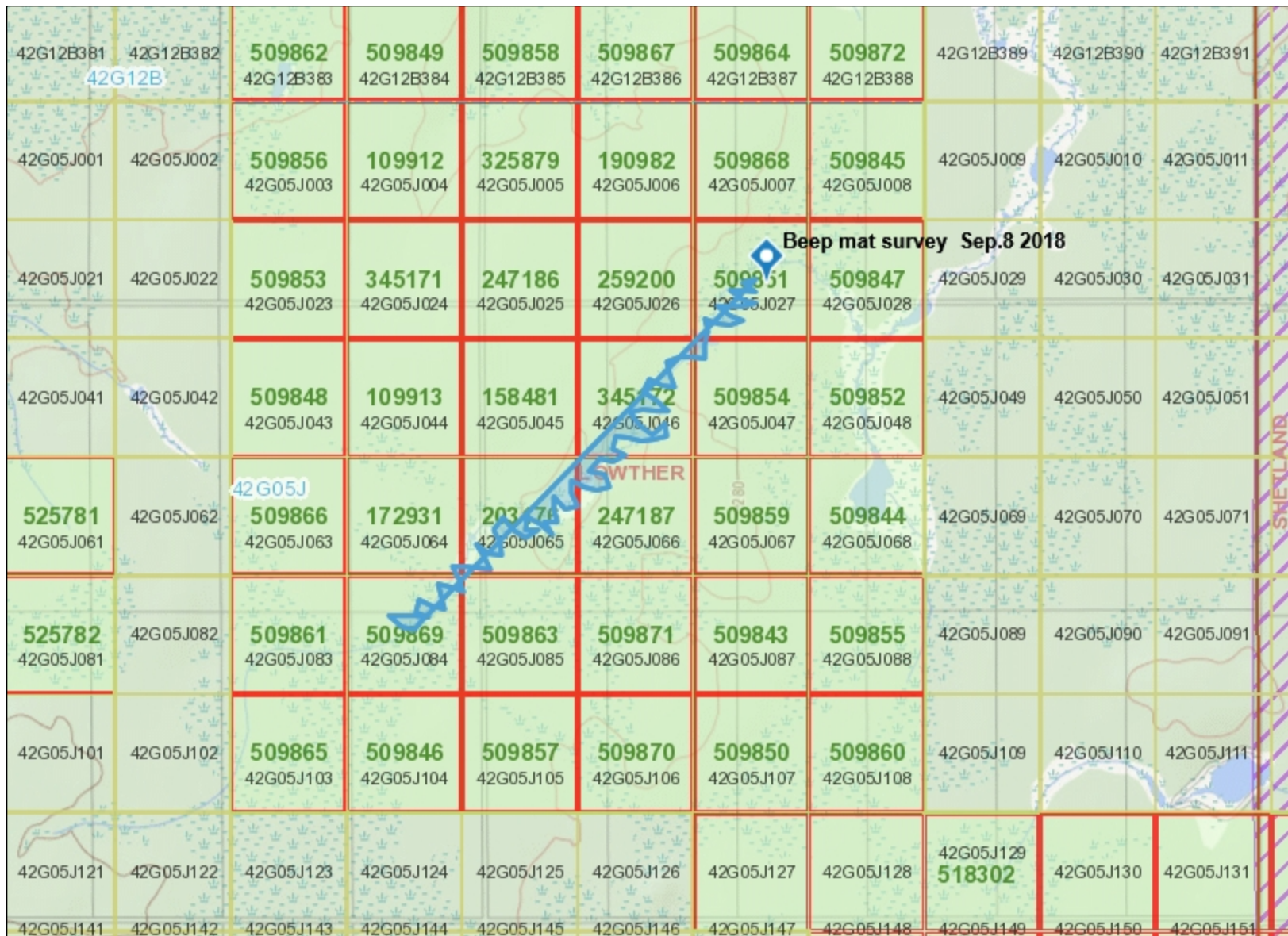
Those wishing to register mining claims should consult with the Provincial Mining Recorders' Office of the Ministry of Energy, Northern Development and Mines for additional information on the status of the lands shown hereon. This map is not intended for navigational, survey, or land title determination purposes as the information shown on this map is compiled from various sources. Completeness and accuracy are not guaranteed. Additional information may also be obtained through the local Land Titles or Registry Office, or the Ministry of Natural Resources and Forestry. The information shown is derived from digital data available in the Provincial Mining Recorders' Office at the time of downloading from the Ministry of Energy, Northern Development and Mines web site.



Imagery Copyright Notices: Ontario Ministry of Natural Resources and Forestry; NASA Landsat Program; First Base Solutions Inc.; Aéro-Photo (1961) Inc.; DigitalGlobe Inc.; U.S. Geological Survey.

© Queen's Printer for Ontario, 2020





Legend

- Provincial Grid Cell**
 - Available
 - Pending
 - Unavailable
- Mining Claim**
 - Mining Claim
 - Boundary Claim
- Alienation**
 - Withdrawal
 - Notice
- ENDM Administrative Boundaries**
 - ENDM Townships and Areas
 - Geographic Lot Fabric
 - UTM Grid 1K
 - UTM Grid 10K
 - Mining Division
 - Mineral Exploration and Development Region
 - CLUPA Protected Area - Far North
 - Resident Geologist District
 - Federal Land Other
 - Native Reserves
- AMIS Sites**
 - AMIS Sites
 - AMIS Features
 - Drill Hole
 - Mineral Occurrences
- MLAS Mining History**
 - Withdrawal - History
 - Notice - History
 - Mining Claim - History
 - Mining Land Tenure - History
 - Legacy Claim
- Provincial Grid**
 - Provincial Grid 250K
 - Provincial Grid 50K
 - Provincial Grid Group
- Land Tenure**
 - Surface Rights
 - Mining Rights
 - Mining and Surface Rights
 - Order-in-Council

Those wishing to register mining claims should consult with the Provincial Mining Recorders' Office of the Ministry of Energy, Northern Development and Mines for additional information on the status of the lands shown hereon. This map is not intended for navigational, survey, or land title determination purposes as the information shown on this map is compiled from various sources. Completeness and accuracy are not guaranteed. Additional information may also be obtained through the local Land Titles or Registry Office, or the Ministry of Natural Resources and Forestry. The information shown is derived from digital data available in the Provincial Mining Recorders' Office at the time of downloading from the Ministry of Energy, Northern Development and Mines web site.

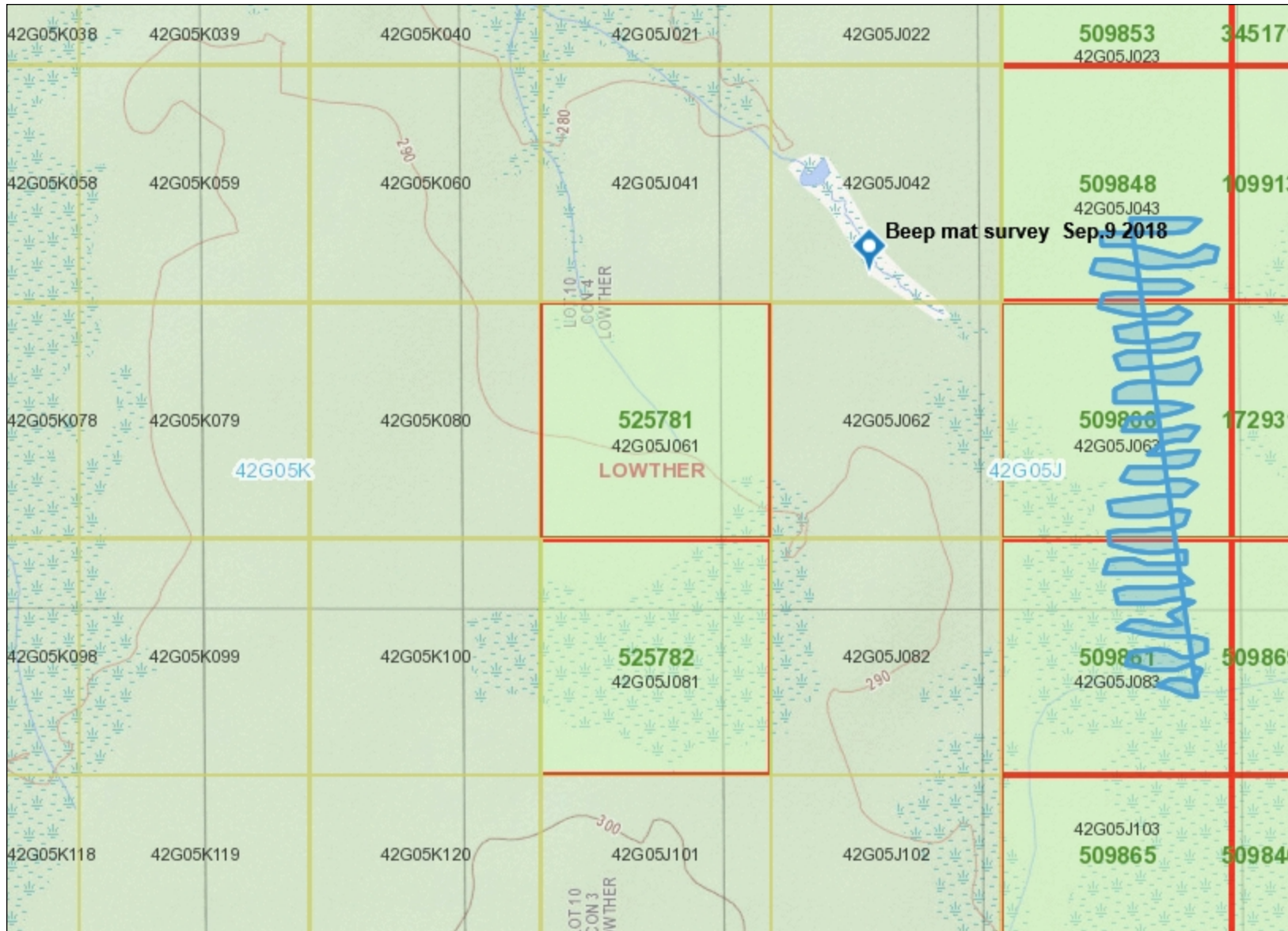
0 1.19 km

Projection: Web Mercator

Imagery Copyright Notices: Ontario Ministry of Natural Resources and Forestry; NASA Landsat Program; First Base Solutions Inc.; Aéro-Photo (1961) Inc.; DigitalGlobe Inc.; U.S. Geological Survey.

© Queen's Printer for Ontario, 2020





Legend

- Provincial Grid Cell**
 - Available
 - Pending
 - Unavailable
- Mining Claim**
 - Mining Claim
 - Boundary Claim
- Alienation**
 - Withdrawal
 - Notice
- ENDM Administrative Boundaries**
 - ENDM Townships and Areas
 - Geographic Lot Fabric
 - UTM Grid 1K
 - UTM Grid 10K
 - Mining Division
 - Mineral Exploration and Development Region
 - CLUPA Protected Area - Far North
 - Resident Geologist District
 - Federal Land Other
 - Native Reserves
- AMIS Sites**
 - AMIS Sites
 - AMIS Features
 - Drill Hole
 - Mineral Occurrences
- MLAS Mining History**
 - Withdrawal - History
 - Notice - History
 - Mining Claim - History
 - Mining Land Tenure - History
 - Legacy Claim
- Provincial Grid**
 - Provincial Grid 250K
 - Provincial Grid 50K
 - Provincial Grid Group
- Land Tenure**
 - Surface Rights
 - Mining Rights
 - Mining and Surface Rights
 - Order-in-Council

Those wishing to register mining claims should consult with the Provincial Mining Recorders' Office of the Ministry of Energy, Northern Development and Mines for additional information on the status of the lands shown hereon. This map is not intended for navigational, survey, or land title determination purposes as the information shown on this map is compiled from various sources. Completeness and accuracy are not guaranteed. Additional information may also be obtained through the local Land Titles or Registry Office, or the Ministry of Natural Resources and Forestry. The information shown is derived from digital data available in the Provincial Mining Recorders' Office at the time of downloading from the Ministry of Energy, Northern Development and Mines web site.



Imagery Copyright Notices: Ontario Ministry of Natural Resources and Forestry; NASA Landsat Program; First Base Solutions Inc.; Aéro-Photo (1961) Inc.; DigitalGlobe Inc.; U.S. Geological Survey.
© Queen's Printer for Ontario, 2020





Legend

- Provincial Grid Cell**
 - Available
 - Pending
 - Unavailable
- Mining Claim**
 - Mining Claim
 - Boundary Claim
- Alienation**
 - Withdrawal
 - Notice
- ENDM Administrative Boundaries**
 - ENDM Townships and Areas
 - Geographic Lot Fabric
 - UTM Grid 1K
 - UTM Grid 10K
 - Mining Division
 - Mineral Exploration and Development Region
 - CLUPA Protected Area - Far North
 - Resident Geologist District
 - Federal Land Other
 - Native Reserves
- AMIS Sites**
 - AMIS Sites
 - AMIS Features
 - Drill Hole
 - Mineral Occurrences
- MLAS Mining History**
 - Withdrawal - History
 - Notice - History
 - Mining Claim - History
 - Mining Land Tenure - History
 - Legacy Claim
- Provincial Grid**
 - Provincial Grid 250K
 - Provincial Grid 50K
 - Provincial Grid Group
- Land Tenure**
 - Surface Rights
 - Mining Rights
 - Mining and Surface Rights
 - Order-in-Council

Those wishing to register mining claims should consult with the Provincial Mining Recorders' Office of the Ministry of Energy, Northern Development and Mines for additional information on the status of the lands shown hereon. This map is not intended for navigational, survey, or land title determination purposes as the information shown on this map is compiled from various sources. Completeness and accuracy are not guaranteed. Additional information may also be obtained through the local Land Titles or Registry Office, or the Ministry of Natural Resources and Forestry. The information shown is derived from digital data available in the Provincial Mining Recorders' Office at the time of downloading from the Ministry of Energy, Northern Development and Mines web site.



Projection: Web Mercator



Imagery Copyright Notices: Ontario Ministry of Natural Resources and Forestry; NASA Landsat Program; First Base Solutions Inc.; Aéro-Photo (1961) Inc.; DigitalGlobe Inc.; U.S. Geological Survey.

© Queen's Printer for Ontario, 2020

