

We are committed to providing [accessible customer service](#).

If you need accessible formats or communications supports, please [contact us](#).

Nous tenons à améliorer [l'accessibilité des services à la clientèle](#).

Si vous avez besoin de formats accessibles ou d'aide à la communication, veuillez [nous contacter](#).

## 2019 Work Report Lowther pegmatite

On June 30<sup>th</sup>, 2019 me Gerald Lecours and Paul Lecours left Lac La Biche Ab. Driving my pickup truck. We drove up to Winnipeg where we slept in the truck for a few hours. And from there we traveled to Hearst On. Where we arrived on July 2<sup>nd</sup>.

On July 3<sup>rd</sup>, we traveled to Timmins On. To pick up argo and trailer that we had rented from All Terrain Recreation and Rentals. Once we picked it up we travelled back to Hearst, where we bought supplies needed and got ready.

On July 4<sup>th</sup>, We started up to the claim with the argo on the winter trail access. Approximately 2 km. from our starting point the argo broke down. After looking for a while, we found the problem and it couldn't be fixed without parts and major work. We walked back to the truck, went back to town to rent another argo from Lebel Chainsaw in Hearst, traveled back to get the broken argo pulled out and back on its trailer, and brought it back to Hearst so it could be picked up by All Terrain Recreation and Rentals so it could be fixed. Then we went back to the claim, started along the winter trail up to the first creek approximately 3 km. from the road. We found that what was a small creek before easily crossed with argo was now about 200 m. wide from the beavers building a dam, and made it impossible to cross. We then turned around and travelled back with the argo and the truck to the south trail access to the claim. We left the truck at the end of the concession and took the argo up the trail. I was planning on crossing the first creek by unloading our gear from the argo and crossing it with a canoe that I have already there. But to my surprise we got there and there was no water left, the beaver dam that was downstream had busted open a few days prior from what I could see. All that was left was slimy gross mud about 60 cm. thick across the bottom for a distance of 150 m. wide to get to the other side. Needless to say we didn't even try to cross it. So we turned around traveled back to the truck so we could go back to town. And on the way back we got two flat tires on the truck.

On the 5<sup>th</sup> of July we went back to south trail, took the argo back to first creek, and once we got there, we proceeded to cut a whole bunch of balsam fir and spruce saplings so we could lay them down in the bottom of the creek and drive the argo across. Which worked very good. We finally arrived on site at the Decoy showing at 4 pm and set up camp.

On July 6<sup>th</sup> we started flying a drone that I had bought previous to our departure for this prospecting trip so we could locate some outcrops. Immediately one large outcrop that was previously unexplored was located 404 m. S,S-E of the decoy showing situated on claim #158481. We landed the drone there, walked over and spent the rest of the day digging various pits in shallow overburden. Unfortunately all rocks exposed was graphic feldspar and no pegmatite was observed

July 7<sup>th</sup>. That morning we took the argo and travelled eastward from the decoy showing to a small pond that is situated on the East border of our claim group. It is situated on claim #509844. We flew the drone and located some outcrops along the edge of the pond. Upon investigation we saw that it was mostly made up of granite. We did some digging and found one small unzoned pegmatite we exposed it

for 1.5 m. wide and 6 m. long. It was composed of mostly feldspar that was bright orange almost fluorescent in color. We then investigated another outcrop that was located on the opposite side of the pond. And again only granite was seen there. Again we flew the drone and located a big outcrop located 300 m west from the north tip of the pond. It is situated on claim #509854. We walked up to it and started digging small pits. The main rock that was uncovered was feldspar, but some small pegmatite stringers less than 30 cm. were observed.

On July 8<sup>th</sup>, we went back to the last outcrop that we had located the previous afternoon, and started digging some pits. One pegmatite was discovered. We performed some stripping and uncovered a zoned pegmatite with 3 different zones being seen. 3 samples were taken a1-1,a1-2,a1-3. Due to thicker overburden we were not able to expose the total length or width of the pegmatite. By the end of the day we had exposed 17 m. long and 3 m. wide. The pegmatite strike at a North South direction and no dip was visible. More stripping is highly recommended for this one in the future. And also from this moment this pegmatite will be referred to as A-1 showing, it is situated 0303978 easting, 05485587 northing , zone 17.

July 9th. We woke up that morning to heavy smoke cover from the surrounding forest fires present in the area. We tried flying the drone but unfortunately we couldn't see anything, then it started raining heavy and the forecast was calling for a week of rain so we packed up and went back to Hearst and rented a room at the Queens Motel.

July 10 started heading back to Alberta, slept in the truck along the way and got back to Lac La Biche Ab. On July 11<sup>th</sup>.

Revision for Assessment Work Report 3310

Transaction ID 53337

August 3 2020

Hi Sophie

Here is the information needed for the revision of the work report #3310

Description and G.P.S. location of samples taken

All 3 samples were taken from the same location which is situated on claim # 509854 ,The G.P.S. location is 0303978 Easting, 05485587 Northing Zone 17 .

Sample # A1-1 was from a feldspar zone white in color with some magnetic black mineral present that I think is magnetite.

Sample # A1-2 is from a different feldspar zone brownish in colour with some light green unknown mineral being present.

Sample # A1-3 is from the quartz zone and made up mostly of quartz with some minor feldspar white in colour being present

The receipt from Canadian Tire is for a trailer connection unit and i guess it falls under maintenance so you can eliminate that one. And the tires that I had to buy to replace the 2 tires that I got flats with also falls into maintenance so disregard that one too.

As for filename 1(26) that is for food

Filename 1(29) is a duplicate receipt but was added only once in the total ,I noticed the duplicate in the photocopies and simply ignored it .

Filename 1(30) from Canadian Tire is a second trailer connection unit since i bought the wrong one the first time so it falls again into maintenance.

Filename1 (32) is for the first Argo that i had rented but then broke down in the bush , so I then rented the one from Lebel Chainsaw to pull it out and kept that one for the remainder of the program. The receipt was \$ 1000.00 for the deposit but then he only charge me \$250.00 cause he had to come back to Hearst to get his Argo back and the refund was done by phone after I got back to Alberta and all he did was credit the \$750.00 on the credit card and no receipt were issued for that.

I hope I got everything that was needed, if not let me know

Thank you and have a nice day

Gerald Lecours 300419



The Ontario Ministry of Northern Development and Mines shall not be liable in any way for the use of, or reliance upon, this map or any information on this map. This map should not be used for navigation, a plan of survey, routes, nor locations.

Inquiry Copyright Notices: Ontario Ministry of Natural Resources and Forestry; NASA Landsat Program; First Base Solutions Inc.; Airo-Photo (1961) Inc.; DigitalGlobe Inc.; U.S. Geological Survey.



**Legend**

- Provincial Grid Cells**
  - Available
  - Pending
  - Unavailable
- Mining Claims**
  - Mining Claim
  - Boundary Claim
- Abandonment**
  - Withdrawal
  - Notice
- INM Administrative Boundaries**
  - DNDM Township and Areas
  - Geographic Lot Patches
  - UTM Grid 10K
  - UTM Grid 100K
  - Mining Division
  - Mineral Exploration and Development Region
  - CLUPA Protected Area - Far North
  - Resident Geologist District
  - Federal Land Other
  - Native Reserves
  - MNS Sites
  - MNS Features
  - DRI Sites
  - Mineral Occurrences
- MLAS Mining History**
  - Withdrawal - History
  - Notice - History
  - Mining Claim - History
  - Mining/Land Tenure - History
  - Legacy Claims
- Provincial Grid**
  - Provincial Grid 200K
  - Provincial Grid 50K
  - Provincial Grid Group
- Land Tenure**
  - Surface Rights
  - Mining Rights
  - Mining and Surface Rights
  - District Council



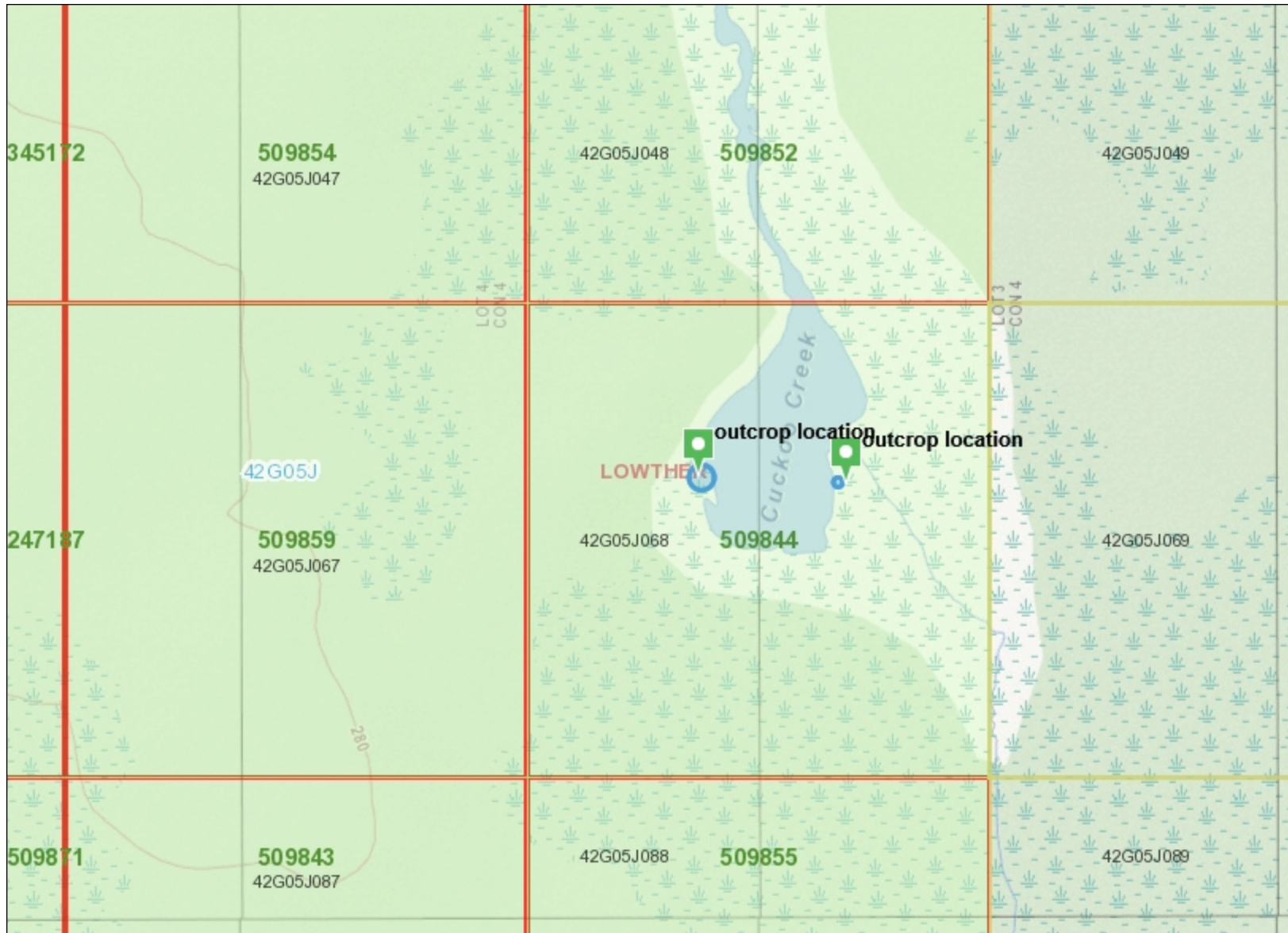
Projection: Web Mercator



The Ontario Ministry of Northern Development and Mines shall not be liable in any way for the use of, or reliance upon, this map or any information on this map. This map should not be used for: navigation, a plan of survey, routes, nor locations.

Imagery Copyright Notices: Ontario Ministry of Natural Resources and Forestry; NASA Landsat Program; First Base Solutions Inc.; Aero-Photo (1961) Inc.; DigitalGlobe Inc.; U.S. Geological Survey.





### Legend

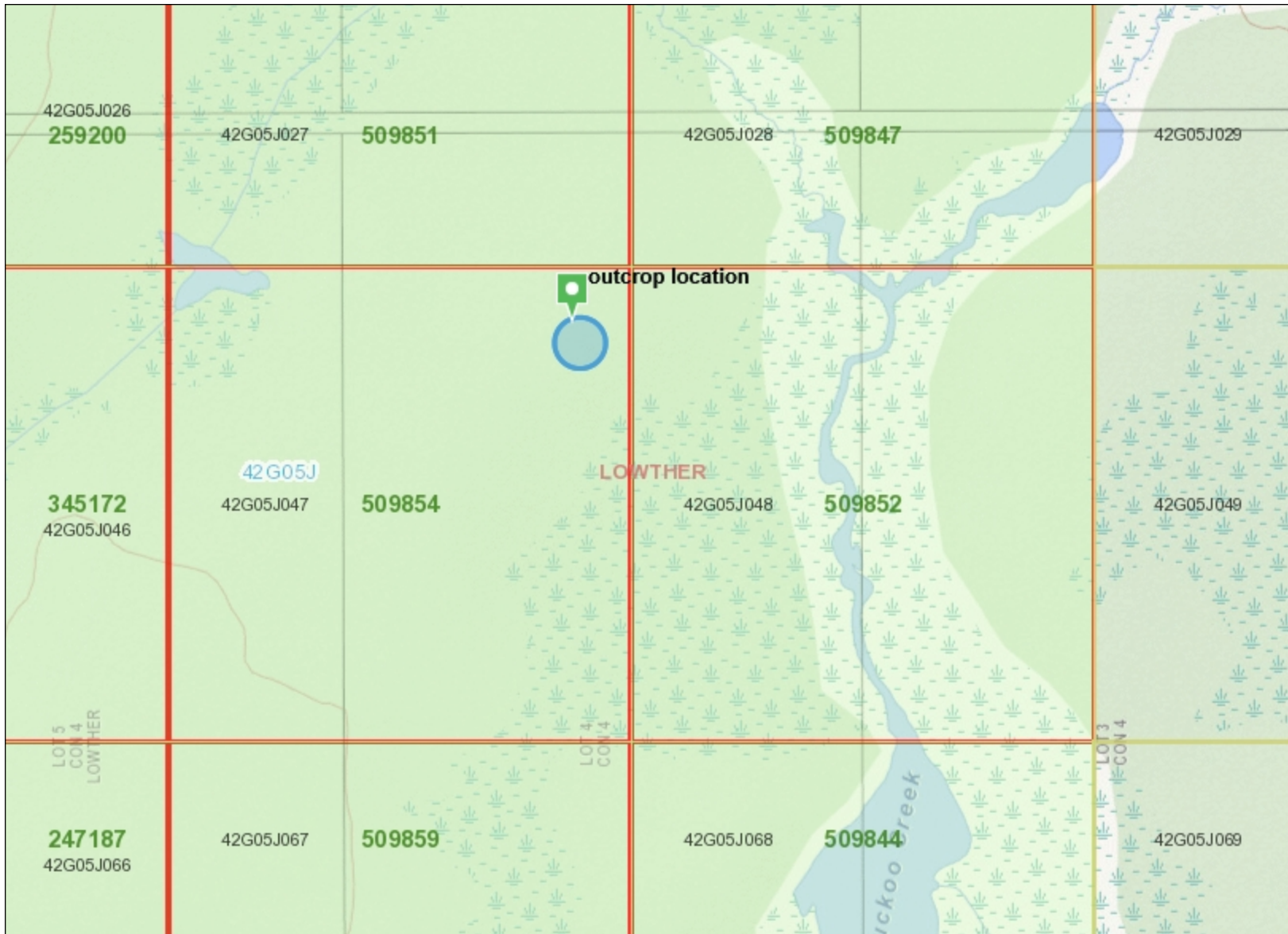
- Provincial Grid Cell**
  - Available
  - Pending
  - Unavailable
- Mining Claim**
  - Mining Claim
  - Boundary Claim
- Alienation**
  - Withdrawal
  - Notice
- ENDM Administrative Boundaries**
  - ENDM Townships and Areas
  - Geographic Lot Fabric
  - UTM Grid 1K
  - UTM Grid 10K
  - Mining Division
  - Mineral Exploration and Development Region
  - CLUPA Protected Area - Far North
  - Resident Geologist District
  - Federal Land Other
  - Native Reserves
- AMIS Sites**
  - AMIS Sites
  - AMIS Features
  - Drill Hole
  - Mineral Occurrences
- MLAS Mining History**
  - Withdrawal - History
  - Notice - History
  - Mining Claim - History
  - Mining Land Tenure - History
  - Legacy Claim
- Provincial Grid**
  - Provincial Grid 250K
  - Provincial Grid 50K
  - Provincial Grid Group
- Land Tenure**
  - Surface Rights
  - Mining Rights
  - Mining and Surface Rights
  - Order-in-Council

Those wishing to register mining claims should consult with the Provincial Mining Recorders' Office of the Ministry of Energy, Northern Development and Mines for additional information on the status of the lands shown hereon. This map is not intended for navigational, survey, or land title determination purposes as the information shown on this map is compiled from various sources. Completeness and accuracy are not guaranteed. Additional information may also be obtained through the local Land Titles or Registry Office, or the Ministry of Natural Resources and Forestry. The information shown is derived from digital data available in the Provincial Mining Recorders' Office at the time of downloading from the Ministry of Energy, Northern Development and Mines web site.



Imagery Copyright Notices: Ontario Ministry of Natural Resources and Forestry; NASA Landsat Program; First Base Solutions Inc.; Aéro-Photo (1961) Inc.; DigitalGlobe Inc.; U.S. Geological Survey.  
© Queen's Printer for Ontario, 2020

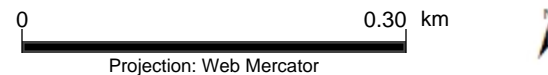




### Legend

- Provincial Grid Cell**
  - Available
  - Pending
  - Unavailable
- Mining Claim**
  - Mining Claim
  - Boundary Claim
- Alienation**
  - Withdrawal
  - Notice
- ENDM Administrative Boundaries**
  - ENDM Townships and Areas
  - Geographic Lot Fabric
  - UTM Grid 1K
  - UTM Grid 10K
  - Mining Division
  - Mineral Exploration and Development Region
  - CLUPA Protected Area - Far North
  - Resident Geologist District
  - Federal Land Other
  - Native Reserves
- AMIS Sites**
  - AMIS Sites
  - AMIS Features
  - Drill Hole
  - Mineral Occurrences
- MLAS Mining History**
  - Withdrawal - History
  - Notice - History
  - Mining Claim - History
  - Mining Land Tenure - History
  - Legacy Claim
- Provincial Grid**
  - Provincial Grid 250K
  - Provincial Grid 50K
  - Provincial Grid Group
- Land Tenure**
  - Surface Rights
  - Mining Rights
  - Mining and Surface Rights
  - Order-in-Council

Those wishing to register mining claims should consult with the Provincial Mining Recorders' Office of the Ministry of Energy, Northern Development and Mines for additional information on the status of the lands shown hereon. This map is not intended for navigational, survey, or land title determination purposes as the information shown on this map is compiled from various sources. Completeness and accuracy are not guaranteed. Additional information may also be obtained through the local Land Titles or Registry Office, or the Ministry of Natural Resources and Forestry. The information shown is derived from digital data available in the Provincial Mining Recorders' Office at the time of downloading from the Ministry of Energy, Northern Development and Mines web site.



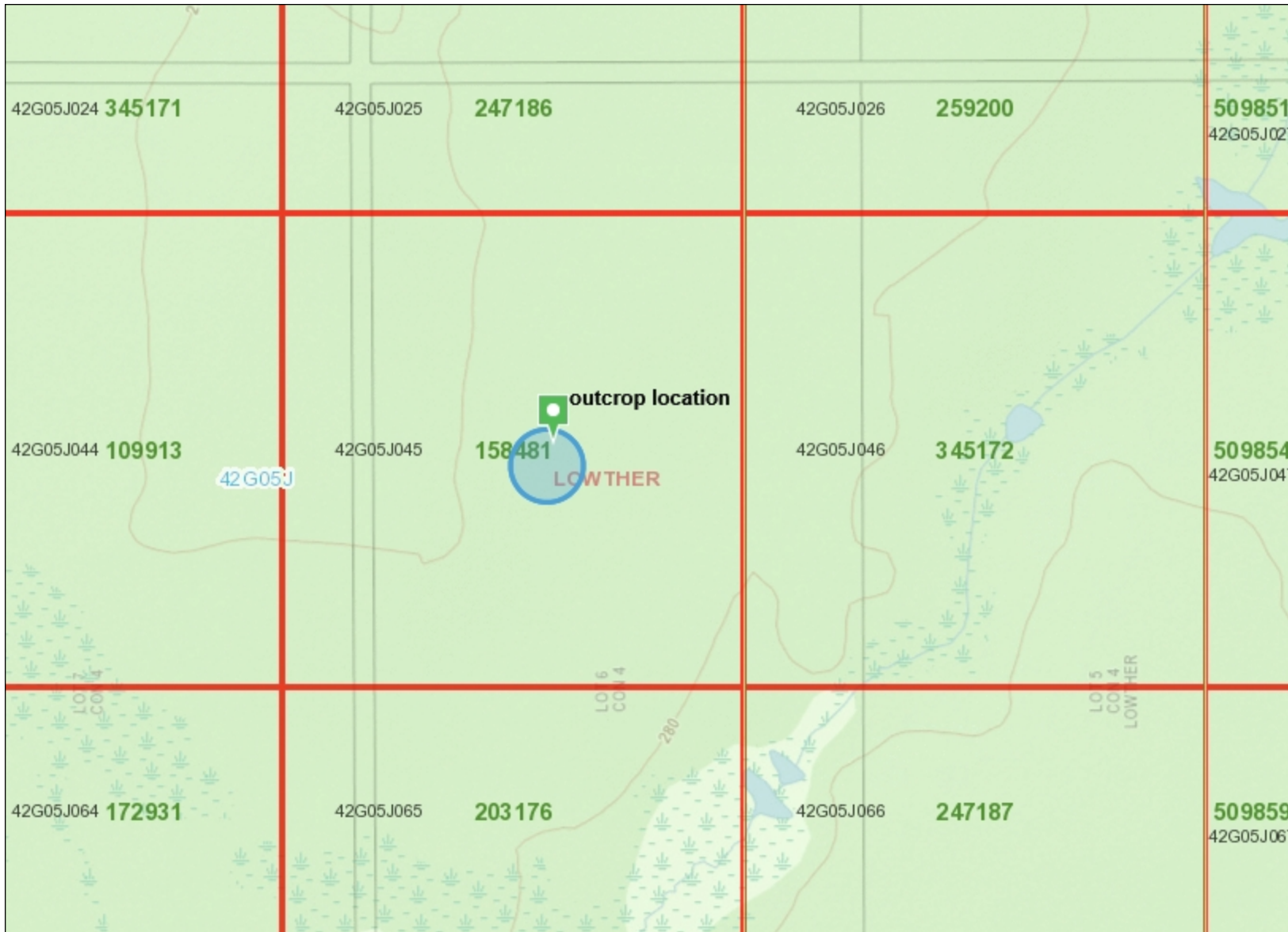
Projection: Web Mercator

Imagery Copyright Notices: Ontario Ministry of Natural Resources and Forestry; NASA Landsat Program; First Base Solutions Inc.; Aéro-Photo (1961) Inc.; DigitalGlobe Inc.; U.S. Geological Survey.

© Queen's Printer for Ontario, 2020







### Legend

- Provincial Grid Cell**
  - Available
  - Pending
  - Unavailable
- Mining Claim**
  - Mining Claim
  - Boundary Claim
- Alienation**
  - Withdrawal
  - Notice
- ENDM Administrative Boundaries**
  - ENDM Townships and Areas
  - Geographic Lot Fabric
  - UTM Grid 1K
  - UTM Grid 10K
  - Mining Division
  - Mineral Exploration and Development Region
  - CLUPA Protected Area - Far North
  - Resident Geologist District
  - Federal Land Other
  - Native Reserves
- AMIS Sites**
  - AMIS Sites
  - AMIS Features
  - Drill Hole
  - Mineral Occurrences
- MLAS Mining History**
  - Withdrawal - History
  - Notice - History
  - Mining Claim - History
  - Mining Land Tenure - History
  - Legacy Claim
- Provincial Grid**
  - Provincial Grid 250K
  - Provincial Grid 50K
  - Provincial Grid Group
- Land Tenure**
  - Surface Rights
  - Mining Rights
  - Mining and Surface Rights
  - Order-in-Council

Those wishing to register mining claims should consult with the Provincial Mining Recorders' Office of the Ministry of Energy, Northern Development and Mines for additional information on the status of the lands shown hereon. This map is not intended for navigational, survey, or land title determination purposes as the information shown on this map is compiled from various sources. Completeness and accuracy are not guaranteed. Additional information may also be obtained through the local Land Titles or Registry Office, or the Ministry of Natural Resources and Forestry. The information shown is derived from digital data available in the Provincial Mining Recorders' Office at the time of downloading from the Ministry of Energy, Northern Development and Mines web site.

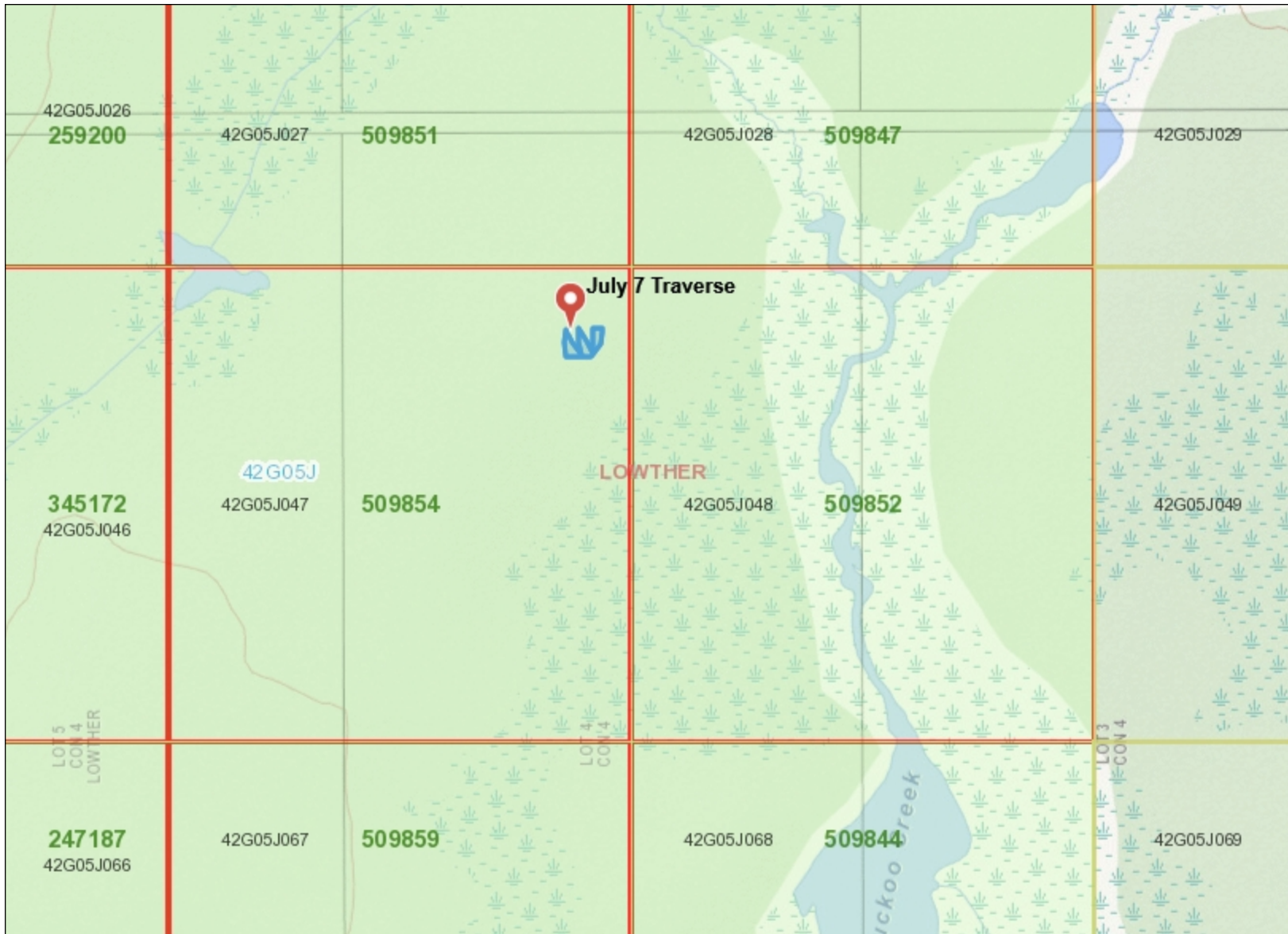
0 0.30 km

Projection: Web Mercator

Imagery Copyright Notices: Ontario Ministry of Natural Resources and Forestry; NASA Landsat Program; First Base Solutions Inc.; Aéro-Photo (1961) Inc.; DigitalGlobe Inc.; U.S. Geological Survey.

© Queen's Printer for Ontario, 2020





### Legend

- Provincial Grid Cell**
  - Available
  - Pending
  - Unavailable
- Mining Claim**
  - Mining Claim
  - Boundary Claim
- Alienation**
  - Withdrawal
  - Notice
- ENDM Administrative Boundaries**
  - ENDM Townships and Areas
  - Geographic Lot Fabric
  - UTM Grid 1K
  - UTM Grid 10K
  - Mining Division
  - Mineral Exploration and Development Region
  - CLUPA Protected Area - Far North
  - Resident Geologist District
  - Federal Land Other
  - Native Reserves
- AMIS Sites**
  - AMIS Sites
  - AMIS Features
  - Drill Hole
  - Mineral Occurrences
- MLAS Mining History**
  - Withdrawal - History
  - Notice - History
  - Mining Claim - History
  - Mining Land Tenure - History
  - Legacy Claim
- Provincial Grid**
  - Provincial Grid 250K
  - Provincial Grid 50K
  - Provincial Grid Group
- Land Tenure**
  - Surface Rights
  - Mining Rights
  - Mining and Surface Rights
  - Order-in-Council

Those wishing to register mining claims should consult with the Provincial Mining Recorders' Office of the Ministry of Energy, Northern Development and Mines for additional information on the status of the lands shown hereon. This map is not intended for navigational, survey, or land title determination purposes as the information shown on this map is compiled from various sources. Completeness and accuracy are not guaranteed. Additional information may also be obtained through the local Land Titles or Registry Office, or the Ministry of Natural Resources and Forestry. The information shown is derived from digital data available in the Provincial Mining Recorders' Office at the time of downloading from the Ministry of Energy, Northern Development and Mines web site.



Imagery Copyright Notices: Ontario Ministry of Natural Resources and Forestry; NASA Landsat Program; First Base Solutions Inc.; Aéro-Photo (1961) Inc.; DigitalGlobe Inc.; U.S. Geological Survey.  
© Queen's Printer for Ontario, 2020





### Legend

- Provincial Grid Cell**
  - Available
  - Pending
  - Unavailable
- Mining Claim**
  - Mining Claim
  - Boundary Claim
- Alienation**
  - Withdrawal
  - Notice
- ENDM Administrative Boundaries**
  - ENDM Townships and Areas
  - Geographic Lot Fabric
  - UTM Grid 1K
  - UTM Grid 10K
  - Mining Division
  - Mineral Exploration and Development Region
  - CLUPA Protected Area - Far North
  - Resident Geologist District
  - Federal Land Other
  - Native Reserves
- AMIS Sites**
  - AMIS Sites
  - AMIS Features
  - Drill Hole
  - Mineral Occurrences
- MLAS Mining History**
  - Withdrawal - History
  - Notice - History
  - Mining Claim - History
  - Mining Land Tenure - History
  - Legacy Claim
- Provincial Grid**
  - Provincial Grid 250K
  - Provincial Grid 50K
  - Provincial Grid Group
- Land Tenure**
  - Surface Rights
  - Mining Rights
  - Mining and Surface Rights
  - Order-in-Council

Those wishing to register mining claims should consult with the Provincial Mining Recorders' Office of the Ministry of Energy, Northern Development and Mines for additional information on the status of the lands shown hereon. This map is not intended for navigational, survey, or land title determination purposes as the information shown on this map is compiled from various sources. Completeness and accuracy are not guaranteed. Additional information may also be obtained through the local Land Titles or Registry Office, or the Ministry of Natural Resources and Forestry. The information shown is derived from digital data available in the Provincial Mining Recorders' Office at the time of downloading from the Ministry of Energy, Northern Development and Mines web site.



Imagery Copyright Notices: Ontario Ministry of Natural Resources and Forestry; NASA Landsat Program; First Base Solutions Inc.; Aéro-Photo (1961) Inc.; DigitalGlobe Inc.; U.S. Geological Survey.  
© Queen's Printer for Ontario, 2020

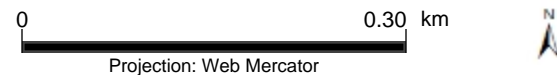




### Legend

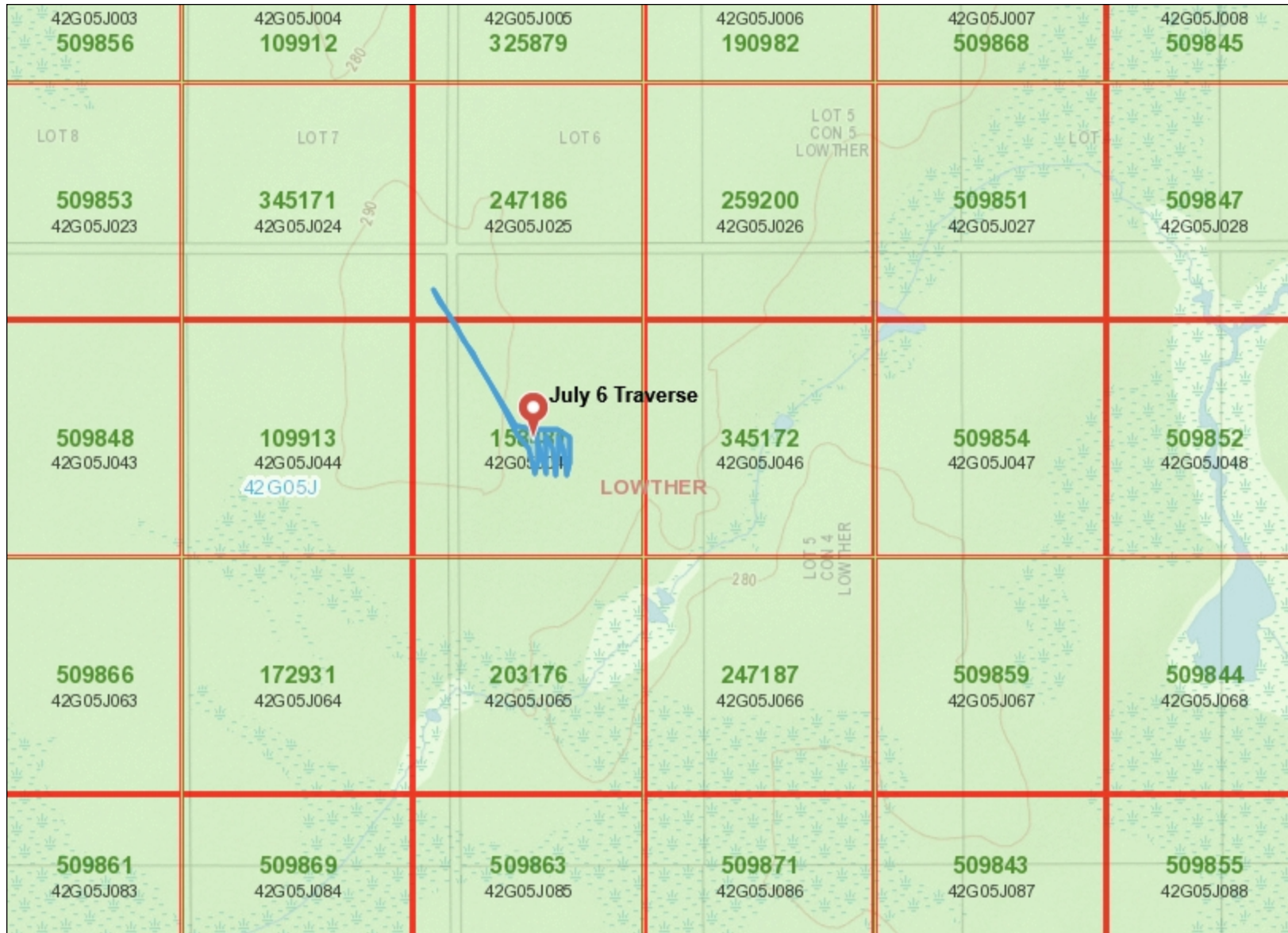
- Provincial Grid Cell**
  - Available
  - Pending
  - Unavailable
- Mining Claim**
  - Mining Claim
  - Boundary Claim
- Alienation**
  - Withdrawal
  - Notice
- ENDM Administrative Boundaries**
  - ENDM Townships and Areas
  - Geographic Lot Fabric
  - UTM Grid 1K
  - UTM Grid 10K
  - Mining Division
  - Mineral Exploration and Development Region
  - CLUPA Protected Area - Far North
  - Resident Geologist District
  - Federal Land Other
  - Native Reserves
- AMIS Sites**
  - AMIS Sites
  - AMIS Features
  - Drill Hole
  - Mineral Occurrences
- MLAS Mining History**
  - Withdrawal - History
  - Notice - History
  - Mining Claim - History
  - Mining Land Tenure - History
  - Legacy Claim
- Provincial Grid**
  - Provincial Grid 250K
  - Provincial Grid 50K
  - Provincial Grid Group
- Land Tenure**
  - Surface Rights
  - Mining Rights
  - Mining and Surface Rights
  - Order-in-Council

Those wishing to register mining claims should consult with the Provincial Mining Recorders' Office of the Ministry of Energy, Northern Development and Mines for additional information on the status of the lands shown hereon. This map is not intended for navigational, survey, or land title determination purposes as the information shown on this map is compiled from various sources. Completeness and accuracy are not guaranteed. Additional information may also be obtained through the local Land Titles or Registry Office, or the Ministry of Natural Resources and Forestry. The information shown is derived from digital data available in the Provincial Mining Recorders' Office at the time of downloading from the Ministry of Energy, Northern Development and Mines web site.



Imagery Copyright Notices: Ontario Ministry of Natural Resources and Forestry; NASA Landsat Program; First Base Solutions Inc.; Aéro-Photo (1961) Inc.; DigitalGlobe Inc.; U.S. Geological Survey.  
© Queen's Printer for Ontario, 2020





### Legend

- Provincial Grid Cell**
  - Available
  - Pending
  - Unavailable
- Mining Claim**
  - Mining Claim
  - Boundary Claim
- Alienation**
  - Withdrawal
  - Notice
- ENDM Administrative Boundaries**
  - ENDM Townships and Areas
  - Geographic Lot Fabric
  - UTM Grid 1K
  - UTM Grid 10K
  - Mining Division
  - Mineral Exploration and Development Region
  - CLUPA Protected Area - Far North
  - Resident Geologist District
  - Federal Land Other
  - Native Reserves
- AMIS Sites**
  - AMIS Sites
  - AMIS Features
  - Drill Hole
  - Mineral Occurrences
- MLAS Mining History**
  - Withdrawal - History
  - Notice - History
  - Mining Claim - History
  - Mining Land Tenure - History
  - Legacy Claim
- Provincial Grid**
  - Provincial Grid 250K
  - Provincial Grid 50K
  - Provincial Grid Group
- Land Tenure**
  - Surface Rights
  - Mining Rights
  - Mining and Surface Rights
  - Order-in-Council

Those wishing to register mining claims should consult with the Provincial Mining Recorders' Office of the Ministry of Energy, Northern Development and Mines for additional information on the status of the lands shown hereon. This map is not intended for navigational, survey, or land title determination purposes as the information shown on this map is compiled from various sources. Completeness and accuracy are not guaranteed. Additional information may also be obtained through the local Land Titles or Registry Office, or the Ministry of Natural Resources and Forestry. The information shown is derived from digital data available in the Provincial Mining Recorders' Office at the time of downloading from the Ministry of Energy, Northern Development and Mines web site.



Imagery Copyright Notices: Ontario Ministry of Natural Resources and Forestry; NASA Landsat Program; First Base Solutions Inc.; Aéro-Photo (1961) Inc.; DigitalGlobe Inc.; U.S. Geological Survey.  
© Queen's Printer for Ontario, 2020





**Date Submitted:** 11-Jul-19  
**Invoice No.:** A19-08982  
**Invoice Date:** 26-Jul-19  
**Your Reference:** A1 July 2019

**Byng Mining**  
**Box 1001**  
**Hearst Ontario P0L1N0**

**ATTN: Gery Lecours**

## CERTIFICATE OF ANALYSIS

3 Rock samples were submitted for analysis.

The following analytical package(s) were requested:

Code UT-1-0.5g Aqua Regia ICP/MS

REPORT **A19-08982**

This report may be reproduced without our consent. If only selected portions of the report are reproduced, permission must be obtained. If no instructions were given at time of sample submittal regarding excess material, it will be discarded within 90 days of this report. Our liability is limited solely to the analytical cost of these analyses. Test results are representative only of material submitted for analysis.

Notes:

Assays are recommended for values above the upper limit. The Au from AR-MS is only semi-quantitative. For accurate Au data, fire assay is recommended.

CERTIFIED BY:

A handwritten signature in black ink, appearing to be "Emmanuel Esemé". The signature is stylized with loops and a long horizontal stroke at the end.

Emmanuel Esemé, Ph.D.  
Quality Control

**ACTIVATION LABORATORIES LTD.**  
41 Bittern Street, Ancaster, Ontario, Canada, L9G 4V5  
TELEPHONE +905 648-9611 or +1.888.228.5227 FAX +1.905.648.9613  
E-MAIL [Ancaster@actlabs.com](mailto:Ancaster@actlabs.com) ACTLABS GROUP WEBSITE [www.actlabs.com](http://www.actlabs.com)

Analyte Symbol	Ti	S	P	Li	Be	B	Na	Mg	Al	K	Bi	Ca	Sc	V	Cr	Mn	Fe	Co	Ni	Cu	Zn	Ga	Ge
Unit Symbol	%	%	%	ppm	ppm	ppm	%	%	%	%	ppm	%	ppm	ppm	ppm	ppm	%	ppm	ppm	ppm	ppm	ppm	ppm
Lower Limit	0.001	1	0.001	0.1	0.1	1	0.001	0.01	0.01	0.01	0.02	0.01	0.1	1	1	1	0.01	0.1	0.1	0.2	0.1	0.02	0.1
Method Code	AR-MS	AR-MS	AR-MS	AR-MS	AR-MS	AR-MS	AR-MS	AR-MS	AR-MS	AR-MS	AR-MS	AR-MS	AR-MS	AR-MS	AR-MS	AR-MS	AR-MS	AR-MS	AR-MS	AR-MS	AR-MS	AR-MS	AR-MS
A1-1	0.006	< 1	0.008	3.7	0.1	< 1	0.092	0.02	0.18	0.09	0.05	0.06	0.5	< 1	21	102	0.52	0.1	0.6	1.7	9.5	1.50	< 0.1
A1-2	0.565	< 1	0.149	29.4	1.1	< 1	0.134	0.64	0.69	0.19	0.21	1.59	3.9	62	33	769	3.30	6.3	7.3	1.3	62.4	4.56	< 0.1
A1-3	0.004	< 1	0.049	1.2	0.2	< 1	0.073	< 0.01	0.18	0.16	0.04	0.12	0.5	1	31	62	0.47	0.2	0.6	1.2	3.2	1.22	< 0.1

Results

Activation Laboratories Ltd.

Report: A19-08982

Analyte Symbol	As	Rb	Sr	Y	Zr	Nb	Mo	Ag	In	Sn	Sb	Te	Cs	Ba	La	Ce	Cd	Pr	Nd	Sm	Se	Eu	Gd
Unit Symbol	ppm	ppm	ppm	ppm	ppm	ppm	ppm	ppm	ppm	ppm	ppm	ppm	ppm	ppm	ppm	ppm	ppm	ppm	ppm	ppm	ppm	ppm	ppm
Lower Limit	0.1	0.1	0.5	0.01	0.1	0.1	0.01	0.002	0.02	0.05	0.02	0.02	0.02	0.5	0.5	0.01	0.01	0.1	0.02	0.1	0.1	0.1	0.1
Method Code	AR-MS	AR-MS	AR-MS	AR-MS	AR-MS	AR-MS	AR-MS	AR-MS	AR-MS	AR-MS	AR-MS	AR-MS	AR-MS	AR-MS	AR-MS	AR-MS	AR-MS	AR-MS	AR-MS	AR-MS	AR-MS	AR-MS	AR-MS
A1-1	0.9	5.6	1.8	1.34	3.4	4.0	0.18	0.047	< 0.02	1.80	0.03	< 0.02	0.60	8.4	< 0.5	0.89	< 0.01	< 0.1	0.34	0.2	0.8	< 0.1	0.1
A1-2	< 0.1	6.3	72.3	21.7	38.9	11.7	0.85	0.181	0.04	3.78	0.05	< 0.02	1.02	42.1	77.9	226	0.15	25.9	104	15.5	0.3	3.2	10.6
A1-3	0.5	7.5	4.4	2.33	6.6	5.7	0.15	0.218	< 0.02	1.00	0.02	< 0.02	0.28	9.8	1.6	3.04	< 0.01	0.3	1.18	0.3	0.7	< 0.1	0.3



Analyte Symbol	Tb	Dy	Ho	Er	Tm	Yb	Lu	Hf	Ta	W	Re	Au	Tl	Pb	Th	U	Hg
Unit Symbol	ppm	ppm	ppm	ppm	ppm	ppm	ppm	ppm	ppm	ppm	ppm	ppb	ppm	ppm	ppm	ppm	ppb
Lower Limit	0.1	0.1	0.1	0.1	0.1	0.1	0.1	0.1	0.05	0.1	0.001	0.5	0.02	0.1	0.1	0.1	10
Method Code	AR-MS	AR-MS	AR-MS	AR-MS	AR-MS	AR-MS	AR-MS	AR-MS	AR-MS	AR-MS	AR-MS	AR-MS	AR-MS	AR-MS	AR-MS	AR-MS	AR-MS
A1-1	< 0.1	0.2	< 0.1	0.1	< 0.1	0.2	< 0.1	0.1	< 0.05	0.1	< 0.001	< 0.5	0.05	2.3	0.7	1.1	10
A1-2	1.1	5.1	0.9	2.2	0.3	1.7	0.2	0.7	< 0.05	< 0.1	< 0.001	< 0.5	0.08	13.4	13.9	4.4	< 10
A1-3	< 0.1	0.5	< 0.1	0.2	< 0.1	0.3	< 0.1	0.2	< 0.05	0.3	< 0.001	< 0.5	0.07	3.9	1.2	2.6	< 10

Analyte Symbol	Ti	S	P	Li	Be	B	Na	Mg	Al	K	Bi	Ca	Sc	V	Cr	Mn	Fe	Co	Ni	Cu	Zn	Ga	Ge
Unit Symbol	%	%	%	ppm	ppm	ppm	%	%	%	%	ppm	%	ppm	ppm	ppm	ppm	%	ppm	ppm	ppm	ppm	ppm	ppm
Lower Limit	0.001	1	0.001	0.1	0.1	1	0.001	0.01	0.01	0.01	0.02	0.01	0.1	1	1	1	0.01	0.1	0.1	0.2	0.1	0.02	0.1
Method Code	AR-MS	AR-MS	AR-MS	AR-MS	AR-MS	AR-MS	AR-MS	AR-MS	AR-MS	AR-MS	AR-MS	AR-MS	AR-MS	AR-MS	AR-MS	AR-MS	AR-MS	AR-MS	AR-MS	AR-MS	AR-MS	AR-MS	AR-MS
GXR-4 Meas	0.127	2	0.126	9.5	1.4	3	0.146	1.60	3.07	2.01	19.8	0.88	7.2	76	56	150	2.97	13.4	40.2	6140	66.7	10.9	
GXR-4 Cert	0.29	1.77	0.120	11.1	1.90	4.50	0.564	1.66	7.20	4.01	19.0	1.01	7.70	87.0	64.0	155	3.09	14.6	42.0	6520	73.0	20.0	
GXR-6 Meas		< 1	0.032	24.1	0.9	3	0.076	0.38	7.84	1.21	0.15	0.16	22.3	156	75	971	5.03	12.3	22.8	56.4	114	20.9	
GXR-6 Cert		0.0160	0.0350	32.0	1.40	9.80	0.104	0.609	17.7	1.87	0.290	0.180	27.6	186	96.0	1010	5.58	13.8	27.0	66.0	118	35.0	
OREAS 97 (Aqua Regia) Meas											40.0							62.0		> 10000	610		
OREAS 97 (Aqua Regia) Cert											40.3							62.5		62800.00	635		
OREAS 45d (Aqua Regia) Meas		< 1	0.035	15.3			0.041	0.17	6.28	0.14	0.25	0.10	46.3	202	520	424	13.9	27.4	226	330	33.8	18.4	
OREAS 45d (Aqua Regia) Cert		0.045	0.035	11.9			0.031	0.144	4.860	0.097	0.30	0.09	41.50	201.0	467	400.000	13.650	26.2	176.0	345.0	30.6	17.9	
OREAS 923 (AQUA REGIA) Meas		< 1	0.063	22.6	0.6			1.48	3.17	0.47	21.1	0.40	4.0	32	45	880	6.02	22.1	36.8	4330	338	8.59	
OREAS 923 (AQUA REGIA) Cert		0.684	0.061	23.4	0.61			1.43	2.80	0.322	21.8	0.326	3.09	30.6	39.4	850	5.91	22.2	32.7	4248	335	8.01	
OREAS 520 (Aqua Regia) Meas	0.157	< 1	0.076	14.2	0.5		0.057	1.09	1.57	0.53	2.87	3.90	13.0	265	41	2440	16.4	200	83.3	2810	18.2	13.4	0.1
OREAS 520 (Aqua Regia) Cert	0.135	1.03	0.0740	16.6	0.540		0.0520	1.14	1.56	0.506	2.90	3.84	11.8	247	37.4	2280	15.74	196	73.0	2960	20.7	13.7	0.250
OREAS 907 (Aqua Regia) Meas	0.021	< 1	0.023	4.4	0.9		0.086	0.17	1.16	0.39	22.1	0.25	2.4	5	9	334	8.16	44.1	5.3	6210	141	17.7	
OREAS 907 (Aqua Regia) Cert	0.0170	0.0660	0.0240	4.05	0.870		0.0860	0.221	0.945	0.286	22.3	0.280	2.16	5.12	8.59	330	8.18	43.7	4.74	6370	139	14.7	
Oreas 621 (Aqua Regia) Meas		4	0.033	6.3	0.6		0.172	0.32	1.83	0.41	3.86	1.61	2.7	11	32	532	3.50	29.2	29.0	3650	> 5000	9.70	
Oreas 621 (Aqua Regia) Cert		4.50	0.0335	8.17	0.530		0.160	0.436	1.60	0.333	3.85	1.65	2.20	10.9	31.3	520	3.43	27.9	25.8	3660	51700	9.29	
OREAS 263 (Fire Assay) Meas																							
OREAS 263 (Fire Assay) Cert																							
A1-2 Orig	0.550	< 1	0.148	29.3	1.0	< 1	0.135	0.66	0.68	0.19	0.20	1.55	3.8	61	34	761	3.26	6.3	7.1	1.4	60.9	4.48	< 0.1
A1-2 Dup	0.580	< 1	0.150	29.6	1.1	< 1	0.133	0.62	0.70	0.20	0.22	1.64	4.0	63	33	776	3.35	6.4	7.5	1.2	63.8	4.63	< 0.1
Method Blank	< 0.001	< 1	< 0.001	< 0.1	< 0.1	< 1	0.008	< 0.01	< 0.01	< 0.01	< 0.02	< 0.01	< 0.1	< 1	< 1	< 1	< 0.01	< 0.1	< 0.1	0.6	0.2	0.14	< 0.1
Method Blank	< 0.001	< 1	< 0.001	< 0.1	< 0.1	< 1	0.008	< 0.01	< 0.01	< 0.01	< 0.02	< 0.01	< 0.1	< 1	< 1	< 1	< 0.01	< 0.1	< 0.1	1.3	1.1	0.16	< 0.1

Analyte Symbol	As	Rb	Sr	Y	Zr	Nb	Mo	Ag	In	Sn	Sb	Te	Cs	Ba	La	Ce	Cd	Pr	Nd	Sm	Se	Eu	Gd
Unit Symbol	ppm	ppm	ppm	ppm	ppm	ppm	ppm	ppm	ppm	ppm	ppm	ppm	ppm	ppm	ppm	ppm	ppm	ppm	ppm	ppm	ppm	ppm	ppm
Lower Limit	0.1	0.1	0.5	0.01	0.1	0.1	0.01	0.002	0.02	0.05	0.02	0.02	0.02	0.5	0.5	0.01	0.01	0.1	0.02	0.1	0.1	0.1	0.1
Method Code	AR-MS	AR-MS	AR-MS	AR-MS	AR-MS	AR-MS	AR-MS	AR-MS	AR-MS	AR-MS	AR-MS	AR-MS	AR-MS	AR-MS	AR-MS	AR-MS	AR-MS	AR-MS	AR-MS	AR-MS	AR-MS	AR-MS	AR-MS
GXR-4 Meas	99.3	73.0	82.1	10.9	12.7	0.3	312	3.25	0.17	5.48	3.18	0.83	2.40	30.2	48.6	93.5	0.25		36.8	5.6	5.0	1.1	4.1
GXR-4 Cert	98.0	160	221	14.0	186	10.0	310	4.00	0.270	5.60	4.80	0.970	2.80	1640	64.5	102	0.860		45.0	6.60	5.60	1.63	5.25
GXR-6 Meas	224	46.0	36.4	5.80	17.7	< 0.1	1.71	0.243	0.05	0.92	2.03	0.02	3.23	1070	10.2	28.7	0.09		10.3	1.8	0.8	0.5	1.7
GXR-6 Cert	330	90.0	35.0	14.0	110	7.50	2.40	1.30	0.260	1.70	3.60	0.0180	4.20	1300	13.9	36.0	1.00		13.0	2.67	0.940	0.760	2.97
OREAS 97 (Aqua Regia) Meas								17.7		80.0	7.65										63.0		
OREAS 97 (Aqua Regia) Cert								19.5		83.8	8.10											67.3	
OREAS 45d (Aqua Regia) Meas	5.0	18.8	12.8	4.49					0.07	1.91				90.0	11.4	25.8							
OREAS 45d (Aqua Regia) Cert	6.50	20.9	11.0	5.08					0.085	1.950				80	9.960	24.8							
OREAS 923 (AQUA REGIA) Meas	6.2	19.2	14.1	17.8	27.4		0.98	1.53	0.39	6.71	0.71		1.95	72.9	34.7	68.1	0.36	6.9	30.1	5.3	5.9		4.6
OREAS 923 (AQUA REGIA) Cert	7.07	19.6	13.6	14.3	22.5		0.84	1.62	0.45	5.99	0.58		1.56	54	30.0	60	0.40	6.79	25.4	4.34	5.99		4.07
OREAS 520 (Aqua Regia) Meas	155	25.5	35.4	13.8	44.5		65.5		0.09	3.59	1.99	0.33	0.55		80.4	78.6					1.7		
OREAS 520 (Aqua Regia) Cert	152	31.5	36.0	14.3	28.0		62.0		0.110	3.42	1.97	0.33	0.570		83.0	79.0					1.73		
OREAS 907 (Aqua Regia) Meas	35.4	16.6	13.1	7.03	54.3		5.78	1.21	2.05	2.47	2.63	0.22	1.46	255	37.8	74.7	0.48	7.6	31.6	4.9	9.1	1.0	4.1
OREAS 907 (Aqua Regia) Cert	37.0	16.7	11.7	6.52	43.7		5.64	1.30	2.35	2.34	2.28	0.230	1.17	225	36.1	73.0	0.540	7.36	27.8	4.79	9.05	0.950	3.45
Oreas 621 (Aqua Regia) Meas	77.1		20.8	7.37	78.4		14.2	63.7	1.51	2.75	128		1.13		20.8	41.5	267				4.9		
Oreas 621 (Aqua Regia) Cert	75.0		18.9	6.87	55.0		13.3	68.0	1.73	2.68	107		1.01		19.4	39.6	278				5.64		
OREAS 263 (Fire Assay) Meas																							
OREAS 263 (Fire Assay) Cert																							
A1-2 Orig	< 0.1	6.2	70.0	21.2	38.1	12.2	0.82	0.189	0.04	3.72	0.04	< 0.02	1.00	41.2	76.2	222	0.15	25.3	100	15.4	0.3	3.1	10.5
A1-2 Dup	< 0.1	6.3	74.6	22.2	39.7	11.3	0.88	0.174	0.04	3.83	0.05	< 0.02	1.03	43.0	79.7	230	0.14	26.5	107	15.5	0.4	3.3	10.7
Method Blank	0.8	< 0.1	< 0.5	< 0.01	< 0.1	< 0.1	0.16	< 0.002	< 0.02	< 0.05	< 0.02	< 0.02	< 0.02	6.9	< 0.5	< 0.01	< 0.01	< 0.1	< 0.02	< 0.1	0.8	< 0.1	< 0.1
Method Blank	0.5	< 0.1	< 0.5	< 0.01	< 0.1	< 0.1	0.05	< 0.002	< 0.02	< 0.05	0.19	< 0.02	< 0.02	6.8	< 0.5	< 0.01	< 0.01	< 0.1	< 0.02	< 0.1	0.8	< 0.1	< 0.1

Analyte Symbol	Tb	Dy	Ho	Er	Tm	Yb	Lu	Hf	Ta	W	Re	Au	Tl	Pb	Th	U	Hg
Unit Symbol	ppm	ppm	ppm	ppm	ppm	ppm	ppm	ppm	ppm	ppm	ppm	ppb	ppm	ppm	ppm	ppm	ppb
Lower Limit	0.1	0.1	0.1	0.1	0.1	0.1	0.1	0.1	0.05	0.1	0.001	0.5	0.02	0.1	0.1	0.1	10
Method Code	AR-MS	AR-MS	AR-MS	AR-MS	AR-MS	AR-MS	AR-MS	AR-MS	AR-MS	AR-MS	AR-MS	AR-MS	AR-MS	AR-MS	AR-MS	AR-MS	AR-MS
GXR-4 Meas	0.5	2.3			0.1	0.8	0.1	0.3	< 0.05	18.6		354	2.77	45.2	17.4	4.8	80
GXR-4 Cert	0.360	2.60			0.210	1.60	0.170	6.30	0.790	30.8		470	3.20	52.0	22.5	6.20	110
GXR-6 Meas	0.2	1.4				0.7	< 0.1	0.4	< 0.05	< 0.1		60.9	1.75	93.1	3.9	0.8	70
GXR-6 Cert	0.415	2.80				2.40	0.330	4.30	0.485	1.90		95.0	2.20	101	5.30	1.54	68.0
OREAS 97 (Aqua Regia) Meas														144			
OREAS 97 (Aqua Regia) Cert														142			
OREAS 45d (Aqua Regia) Meas												16.3		17.4	11.1	1.6	
OREAS 45d (Aqua Regia) Cert												21		17.00	11.3	1.64	
OREAS 923 (AQUA REGIA) Meas	0.6							0.4		2.2			0.18	87.7	16.0	2.3	
OREAS 923 (AQUA REGIA) Cert	0.54							0.60		1.96			0.12	81	14.3	1.80	
OREAS 520 (Aqua Regia) Meas	0.5					1.4	0.2	0.9		28.3		131	0.10	5.5	7.8	15.2	
OREAS 520 (Aqua Regia) Cert	0.500					1.36	0.200	0.810		29.6		169	0.0900	5.22	8.03	14.9	
OREAS 907 (Aqua Regia) Meas	0.4	1.8	0.2	0.6	< 0.1	0.3	< 0.1	0.9		1.0		74.9	0.15	34.7	8.6	2.4	
OREAS 907 (Aqua Regia) Cert	0.430	1.63	0.210	0.430	0.0490	0.290	0.0390	1.09		0.980		101	0.120	34.1	8.04	2.15	
Oreas 621 (Aqua Regia) Meas	0.3					0.6	< 0.1	1.5		1.0		988	0.87	> 5000	5.7	1.8	3010
Oreas 621 (Aqua Regia) Cert	0.330					0.520	0.0780	1.43		1.00		1230	0.770	13600	5.91	1.63	3930
OREAS 263 (Fire Assay) Meas												105					
OREAS 263 (Fire Assay) Cert												214					
A1-2 Orig	1.1	5.1	0.8	2.1	0.3	1.6	0.2	0.7	< 0.05	0.3	< 0.001	< 0.5	0.07	13.2	13.7	4.4	10
A1-2 Dup	1.1	5.2	0.9	2.2	0.3	1.7	0.2	0.7	< 0.05	< 0.1	< 0.001	< 0.5	0.08	13.6	14.2	4.5	< 10
Method Blank	< 0.1	< 0.1	< 0.1	< 0.1	< 0.1	< 0.1	< 0.1	< 0.1	< 0.05	< 0.1	< 0.001	< 0.5	< 0.02	< 0.1	< 0.1	< 0.1	20
Method Blank	< 0.1	< 0.1	< 0.1	< 0.1	< 0.1	< 0.1	< 0.1	< 0.1	< 0.05	< 0.1	< 0.001	0.8	< 0.02	< 0.1	< 0.1	< 0.1	10