

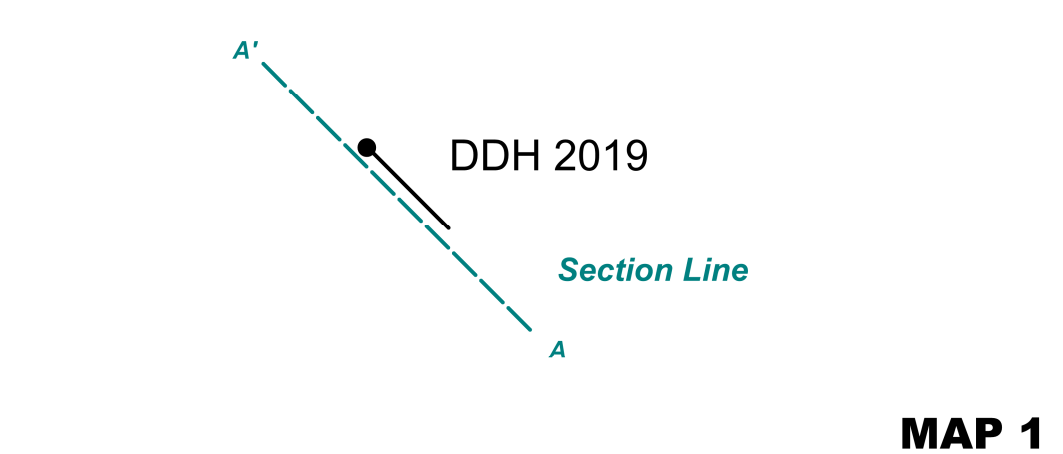
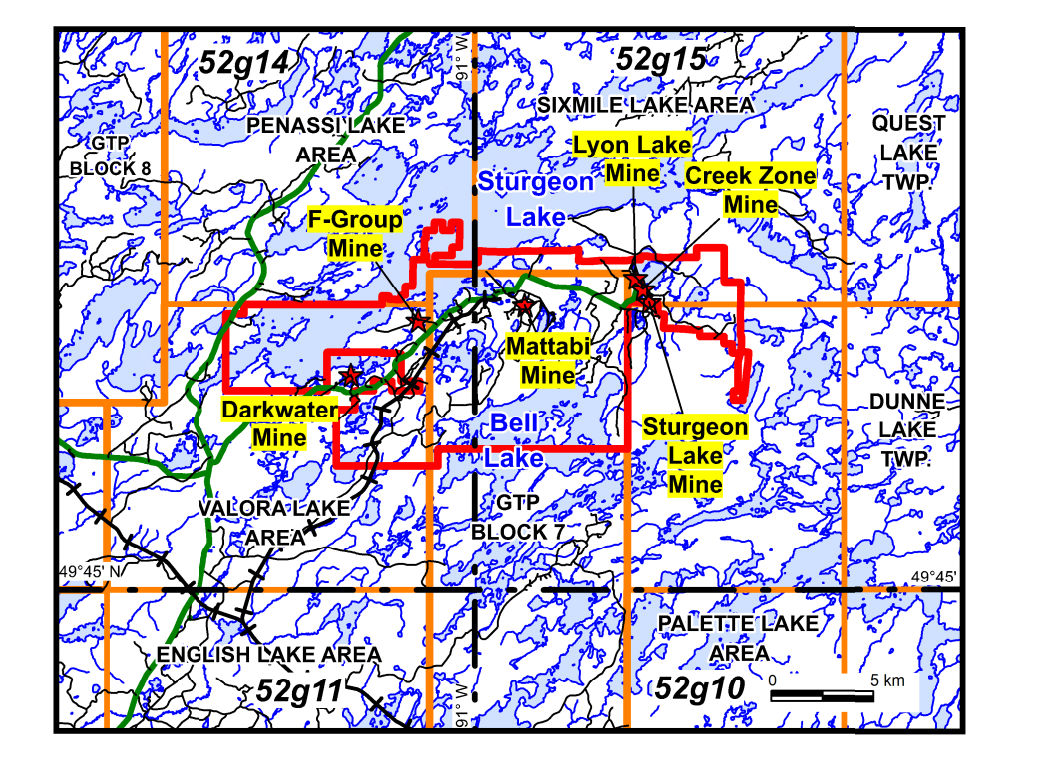
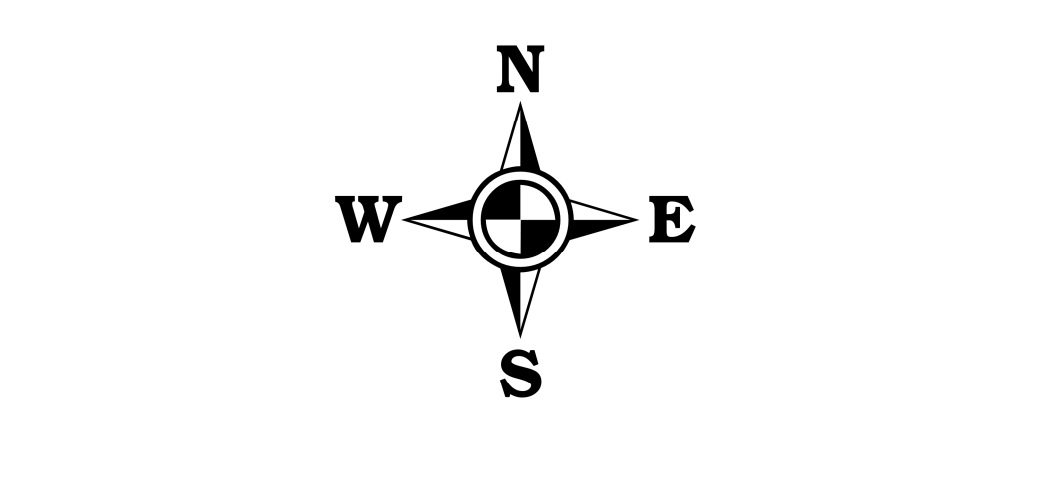
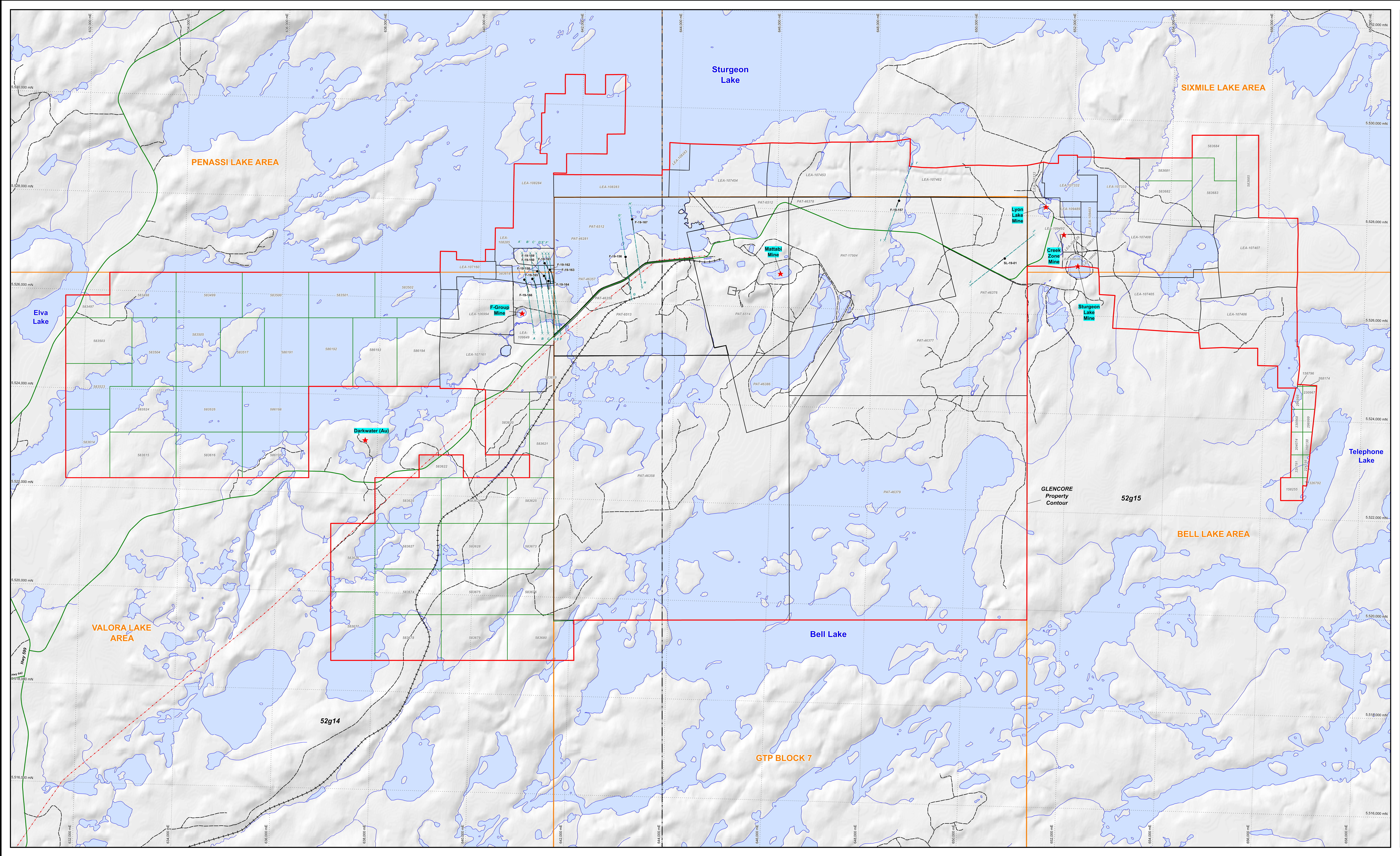
We are committed to providing [accessible customer service](#).

If you need accessible formats or communications supports, please [contact us](#).

Nous tenons à améliorer [l'accessibilité des services à la clientèle](#).

Si vous avez besoin de formats accessibles ou d'aide à la communication, veuillez [nous contacter](#).

APPENDIX G



MAP 1

GLENCORE

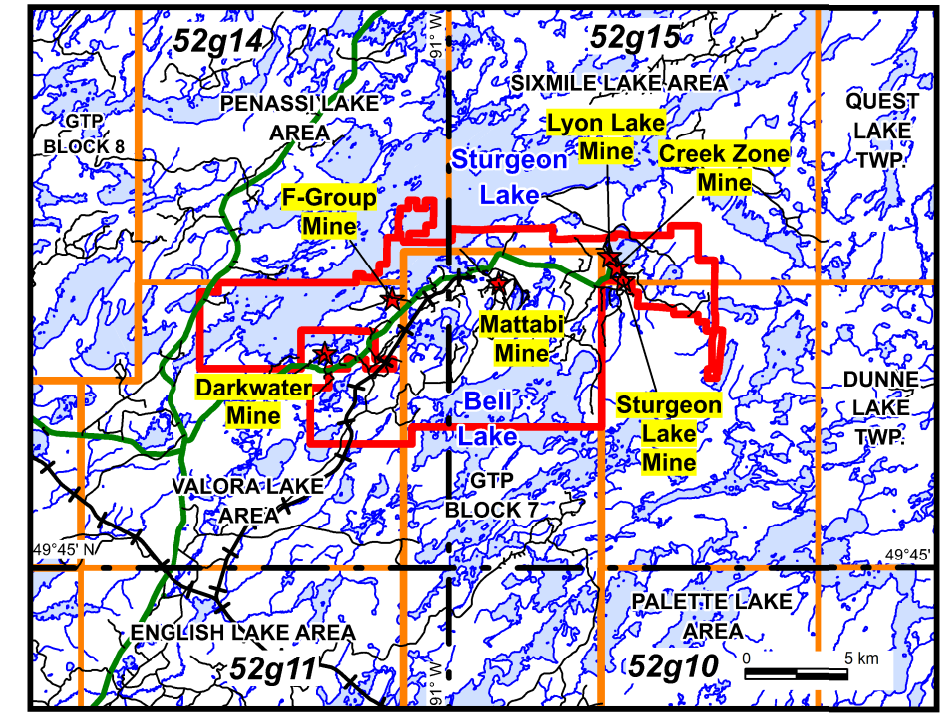
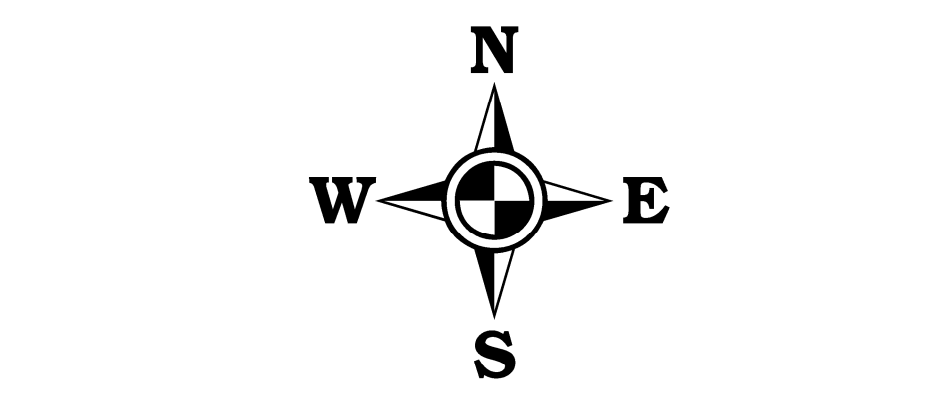
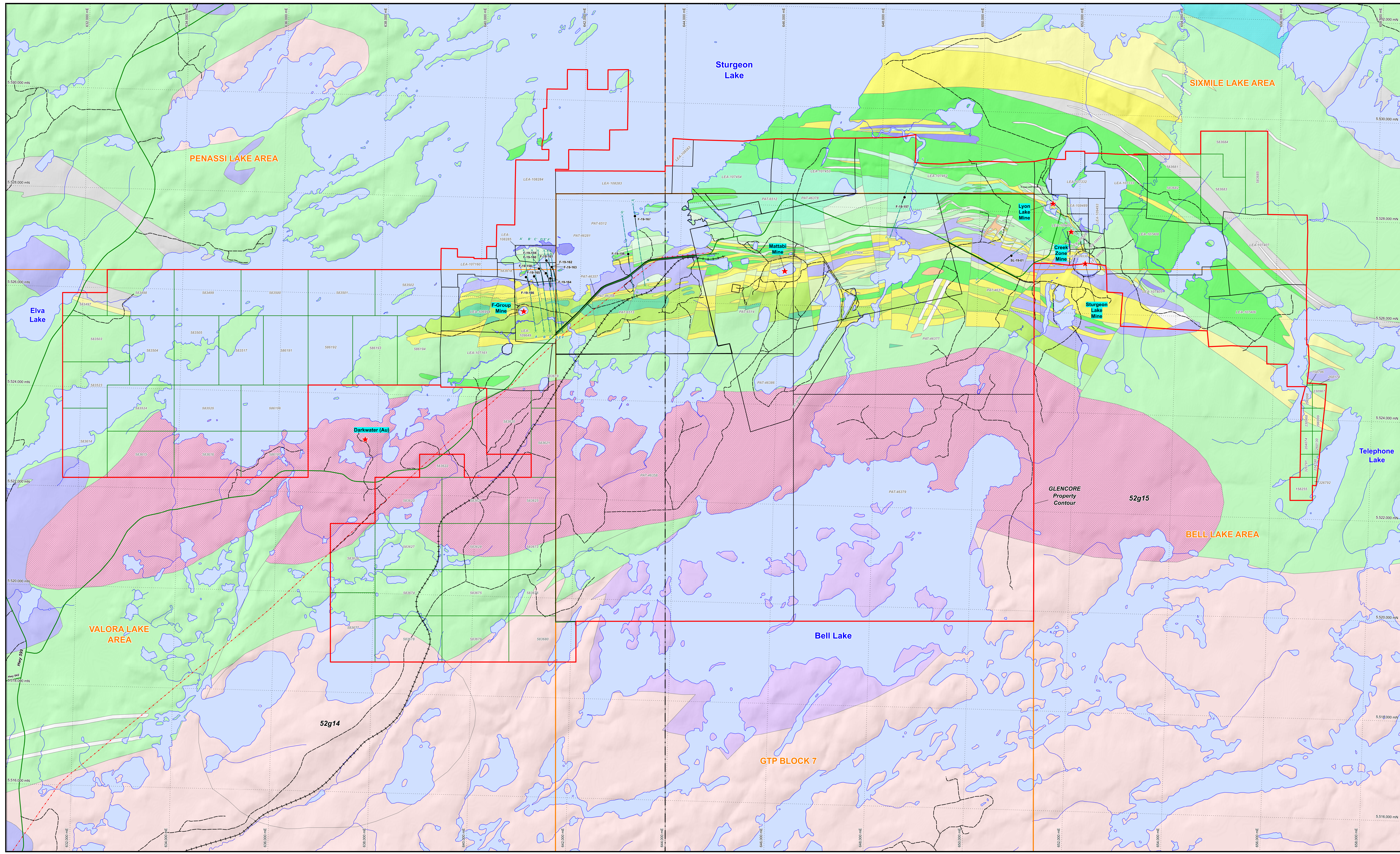
Sturgeon Lake Property

Land Tenure & DDH Location

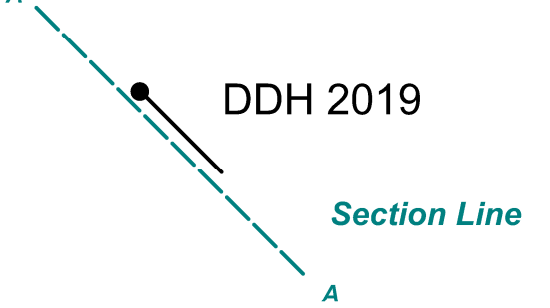
Drawn by: J. Boivin	UTM NAD83 Z15
STL Ass Report Drilling 2019-1.Wor	Date: May 1, 2020

0 1 2 km
1 : 20,000

APPENDIX H



- 1a
- 1b
- 1c
- 2a
- 2b
- 2c
- 2d
- 2e
- 2f
- 2g
- 2h
- 2i
- 2j
- 2k
- 2l
- 2m
- 2n
- 2o
- 2p
- 2q
- 2r
- 2s
- 2t
- 2u
- 2v
- 2w
- 2x
- 2y
- 2z
- 3a
- 3b
- 3c
- 3c.2c
- 3c.2d
- 3c.2e
- 3c.2f
- 3c.2g
- 3c.2h
- 3c.2i
- 3c.2j
- 3c.2k
- 3c.2l
- 3c.2m
- 3c.2n
- 3c.2o
- 3c.2p
- 3c.2q
- 3c.2r
- 3c.2s
- 3c.2t
- 3c.2u
- 3c.2v
- 3c.2w
- 3c.2x
- 3c.2y
- 3c.2z
- 3d
- 3e
- 3f
- 3g
- 3h
- 3i
- 3j
- 3k
- 3l
- 3m
- 3n
- 3o
- 3p
- 3q
- 3r
- 3s
- 3t
- 3u
- 3v
- 3w
- 3x
- 3y
- 3z
- D
- Dr
- Gr
- Gd
- Gr
- Mt
- Qp
- On
- Sy
- TJ



MAP 2

GLENCORE

Sturgeon Lake Property

Geology, Land Tenure & DDH Location

Drawn by: J. Boivin	UTM NAD83 Z15
STL Ass Report Drilling 2019-1.Wor	Date: May 1, 2020

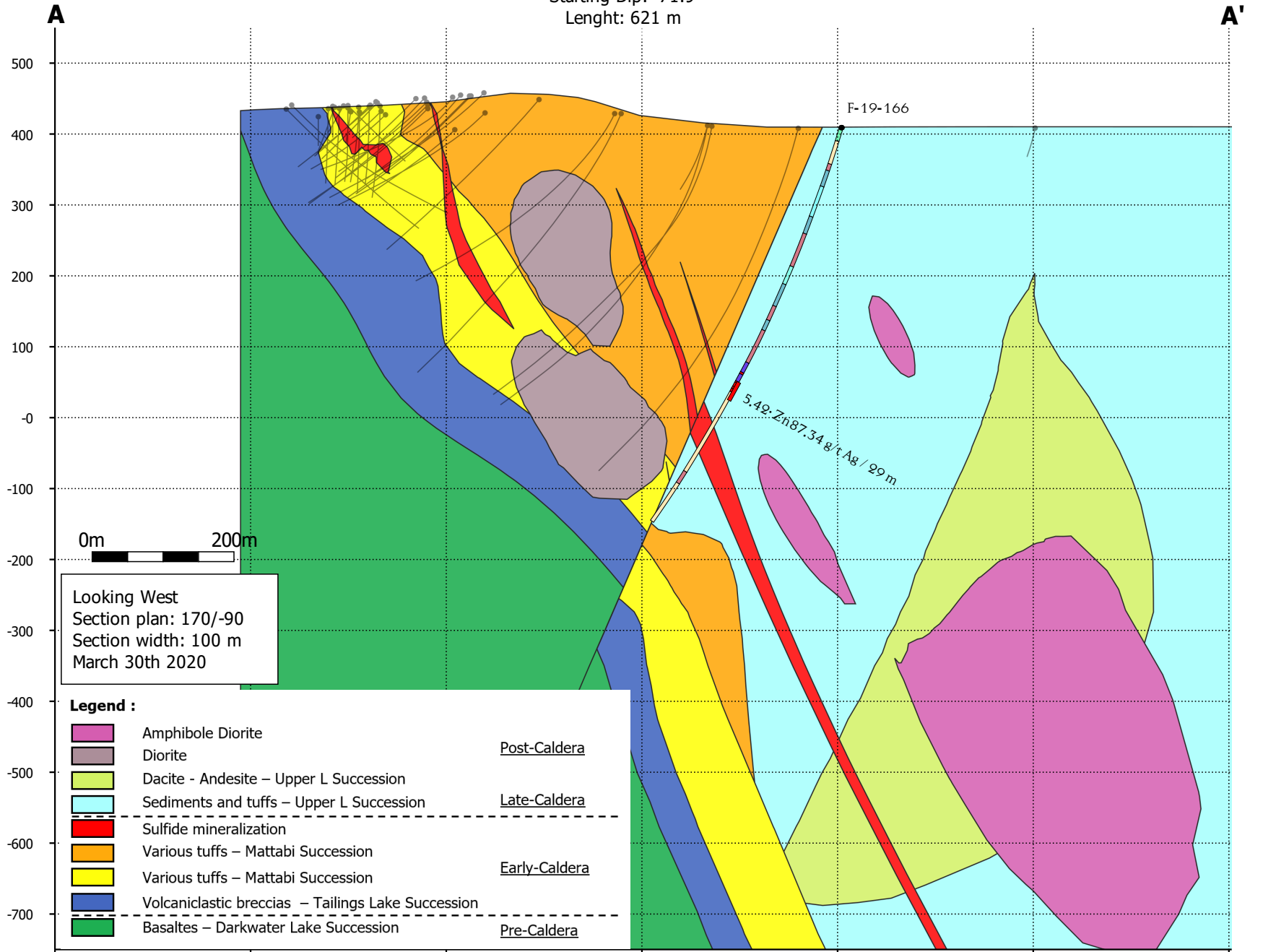
0 1 2 km

1 : 20,000

APPENDIX I

Abitibi Zone Cross Section A-A'

Hole F-19-166
 Starting Azimut: 149.5
 Starting Dip: -71.9
 Length: 621 m



0m 200m

Looking West
 Section plan: 170/-90
 Section width: 100 m
 March 30th 2020

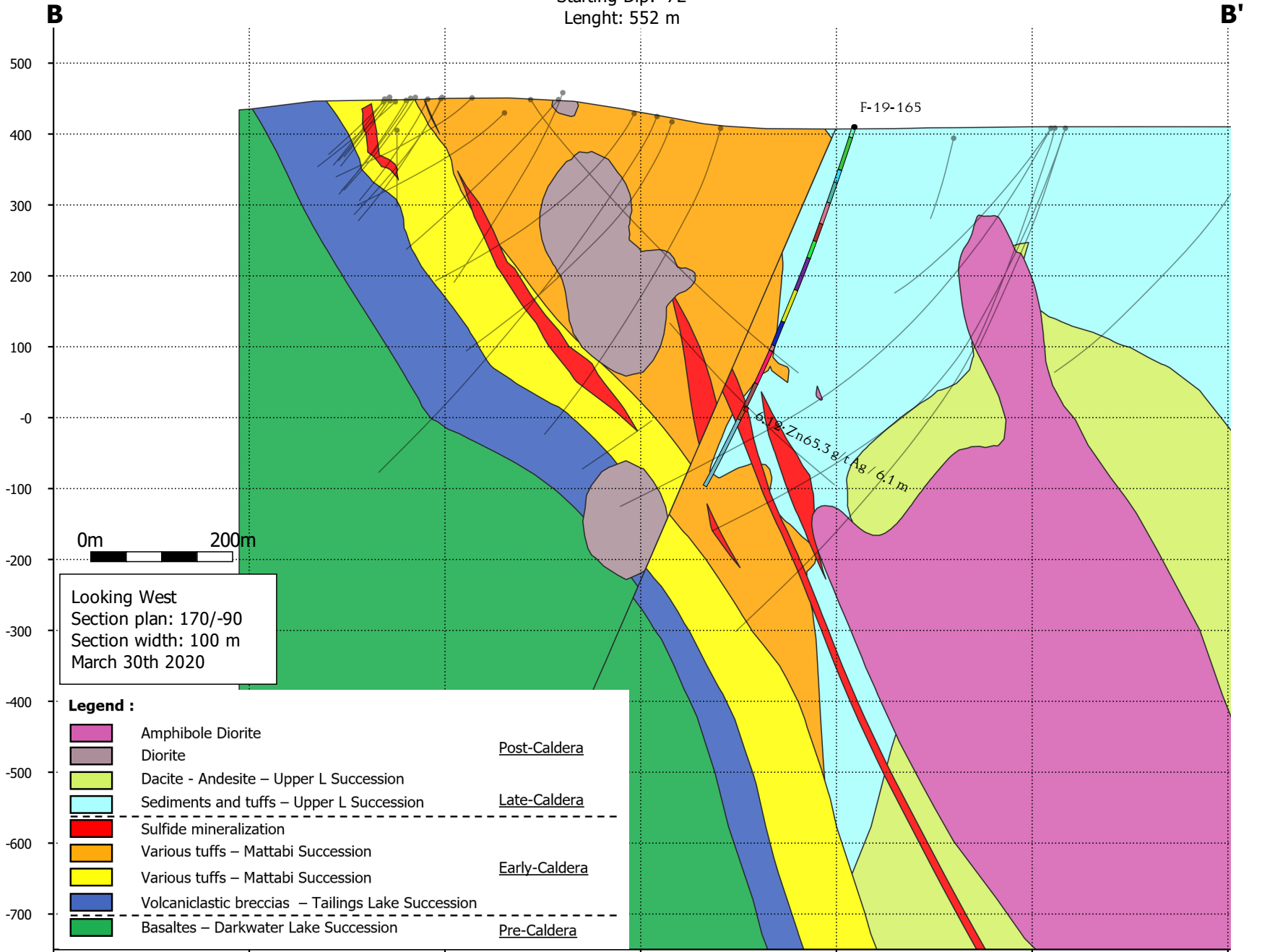
Legend :

	Amphibole Diorite	
	Diorite	<u>Post-Caldera</u>
	Dacite - Andesite – Upper L Succession	
	Sediments and tuffs – Upper L Succession	<u>Late-Caldera</u>
<hr style="border-top: 1px dashed black;"/>		
	Sulfide mineralization	
	Various tuffs – Mattabi Succession	<u>Early-Caldera</u>
	Various tuffs – Mattabi Succession	
	Volcaniclastic breccias – Tailings Lake Succession	
<hr style="border-top: 1px dashed black;"/>		
	Basaltites – Darkwater Lake Succession	<u>Pre-Caldera</u>

x: 641130	x: 641082	x: 641034	x: 640986	x: 640938	x: 640890	x: 640842
y: 5525345	y: 5525617	y: 5525889	y: 5526161	y: 5526433	y: 5526704	y: 5526976

Abitibi Zone Cross Section B-B'

Hole F-19-165
 Starting Azimut: 150
 Starting Dip: -72
 Length: 552 m



x: 641298
y: 5525345

x: 641250
y: 5525617

x: 641202
y: 5525889

x: 641154
y: 5526161

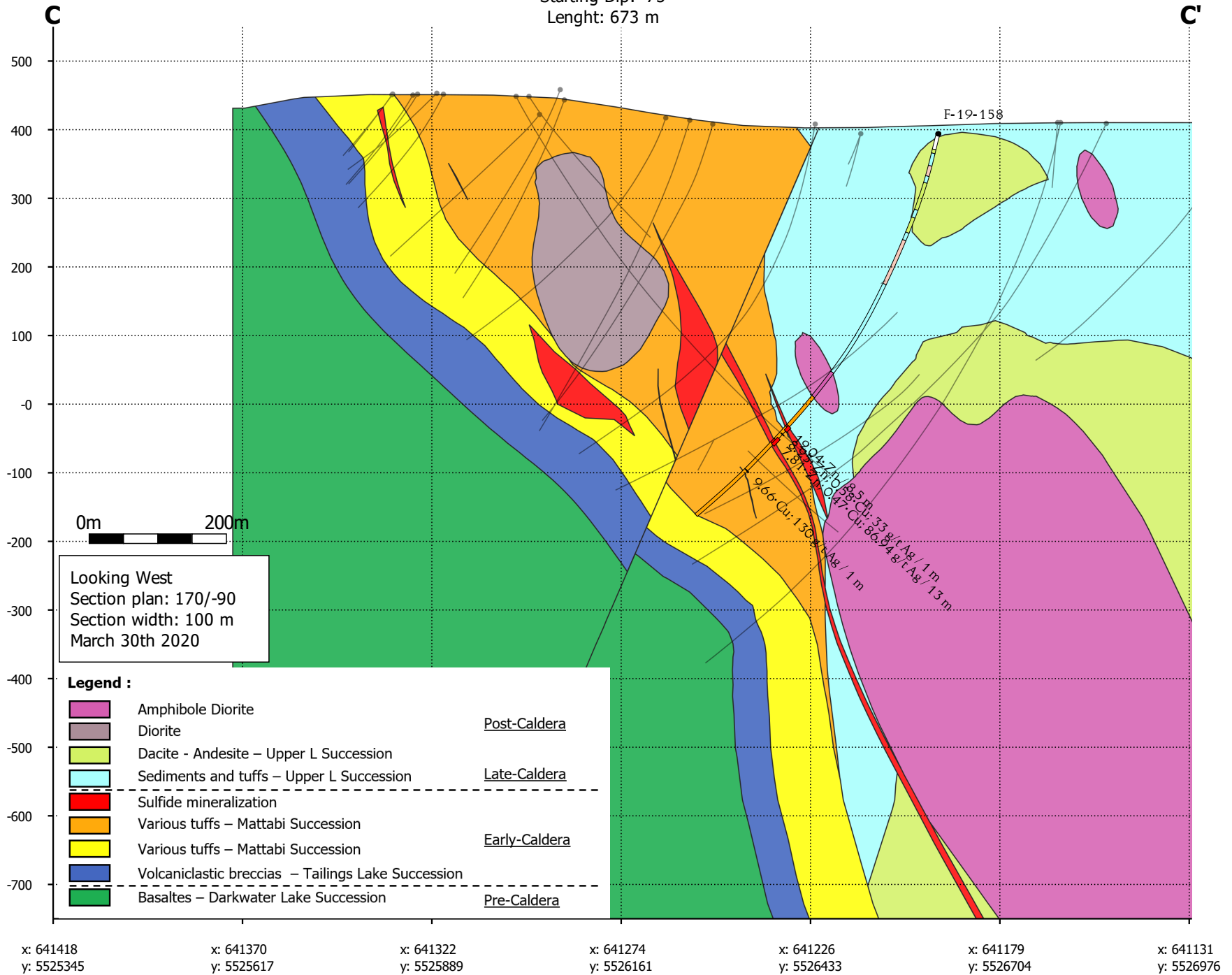
x: 641106
y: 5526433

x: 641058
y: 5526704

x: 641010
y: 5526976

Abitibi Zone Cross Section C-C'

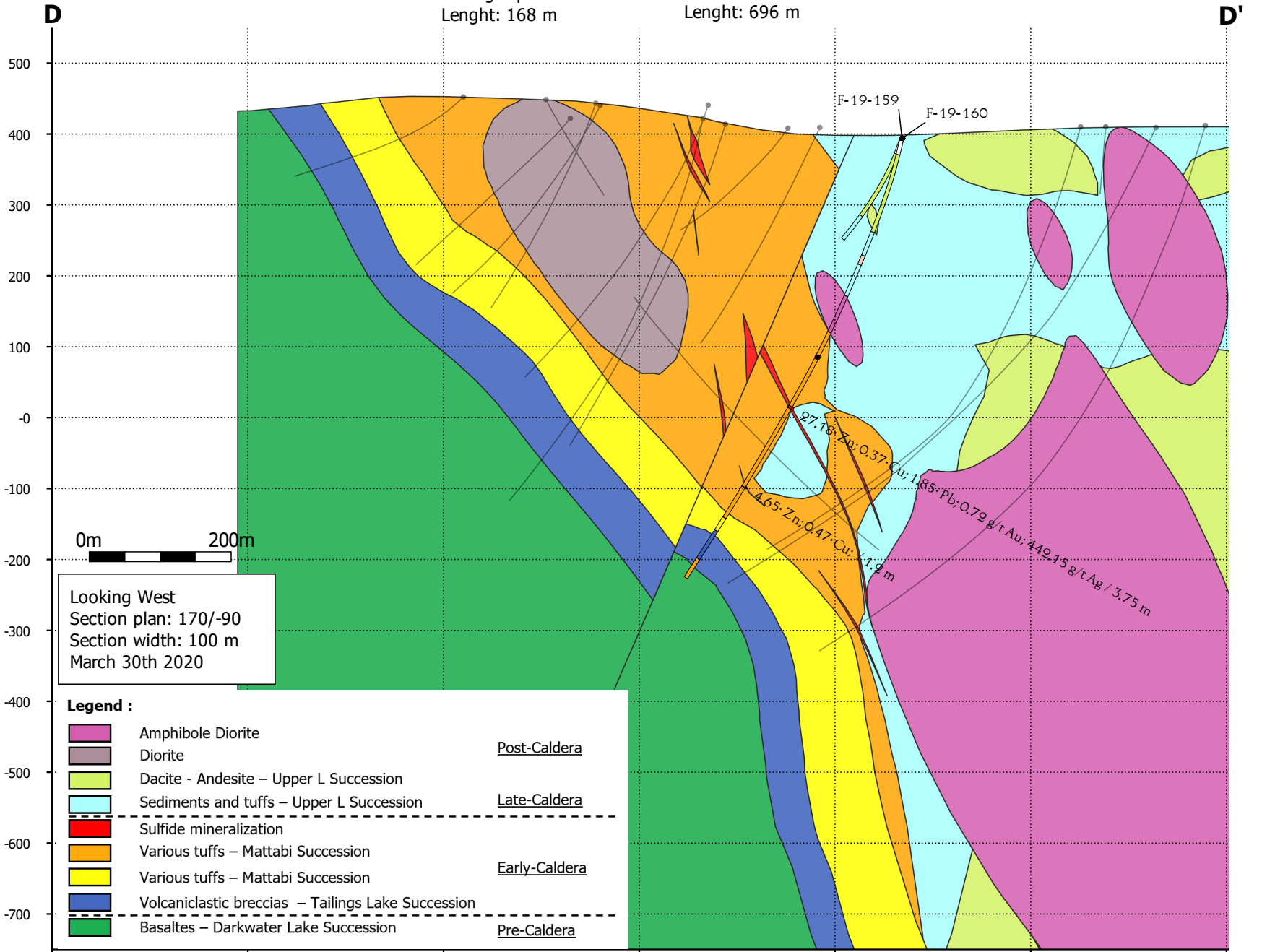
Hole F-19-158
 Starting Azimut: 148
 Starting Dip: -75
 Length: 673 m



Abitibi Zone Cross Section D-D'

Hole F-19-159
Starting Azimut: 143
Starting Dip: -68
Lenght: 168 m

Hole F-19-160
Starting Azimut: 143
Starting Dip: -75
Lenght: 696 m



x: 641543
y: 5525345

x: 641495
y: 5525617

x: 641447
y: 5525889

x: 641399
y: 5526161

x: 641351
y: 5526433

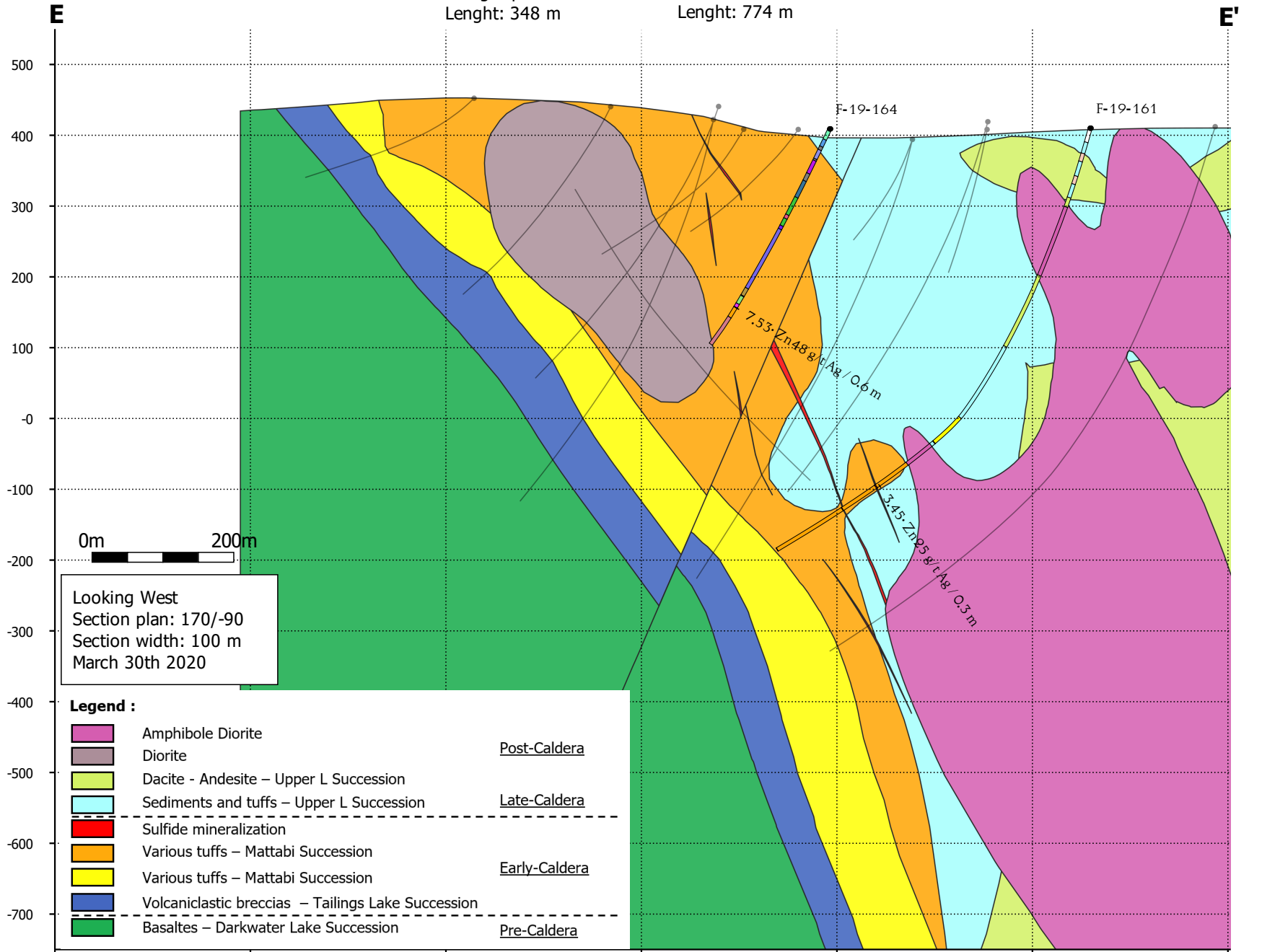
x: 641303
y: 5526704

x: 641255
y: 5526976

Abitibi Zone Cross Section E-E'

Hole F-19-164
Starting Azimut: 167.8
Starting Dip: -64.5
Lenght: 348 m

Hole F-19-161
Starting Azimut: 136
Starting Dip: -71
Lenght: 774 m



0m 200m

Looking West
Section plan: 170/-90
Section width: 100 m
March 30th 2020

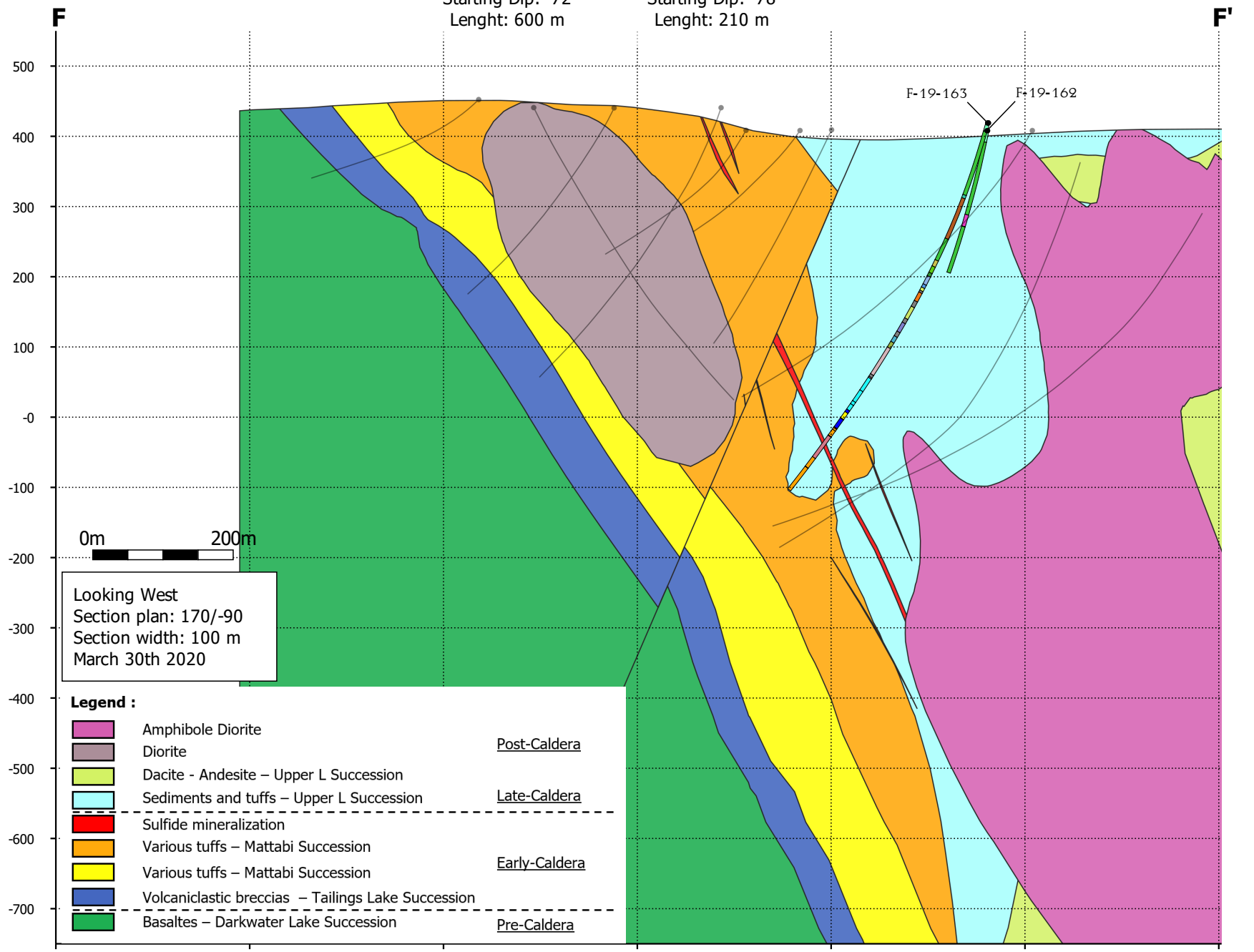
- Legend :**
- Amphibole Diorite
 - Diorite
 - Dacite - Andesite – Upper L Succession
 - Sediments and tuffs – Upper L Succession
 - Sulfide mineralization
 - Various tuffs – Mattabi Succession
 - Various tuffs – Mattabi Succession
 - Volcaniclastic breccias – Tailings Lake Succession
 - Basaltes – Darkwater Lake Succession
- Post-Caldera
- Late-Caldera
- Early-Caldera
- Pre-Caldera

x: 641610	x: 641562	x: 641514	x: 641467	x: 641419	x: 641371	x: 641323
y: 5525345	y: 5525617	y: 5525889	y: 5526161	y: 5526433	y: 5526704	y: 5526976

Abitibi Zone Cross Section F-F'

Hole F-19-163
Starting Azimut: 142.6
Starting Dip: -72
Lenght: 600 m

Hole F-19-162
Starting Azimut: 148
Starting Dip: -78
Lenght: 210 m



Looking West
Section plan: 170/-90
Section width: 100 m
March 30th 2020

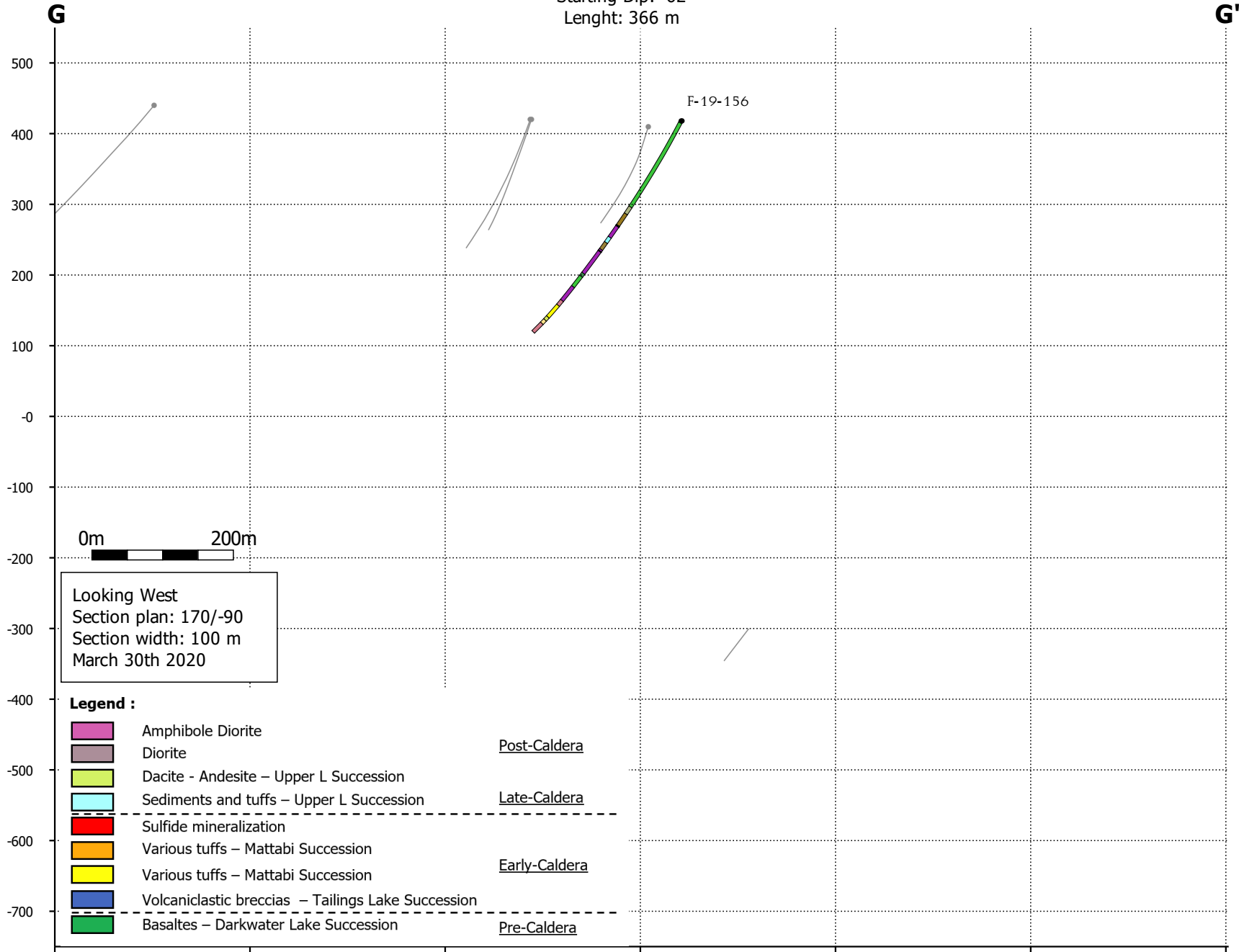
Legend :

	Amphibole Diorite	<u>Post-Caldera</u>
	Diorite	
	Dacite - Andesite – Upper L Succession	<u>Late-Caldera</u>
	Sediments and tuffs – Upper L Succession	
	Sulfide mineralization	
	Various tuffs – Mattabi Succession	<u>Early-Caldera</u>
	Various tuffs – Mattabi Succession	
	Volcaniclastic breccias – Tailings Lake Succession	
	Basaltes – Darkwater Lake Succession	<u>Pre-Caldera</u>

x: 641670	x: 641622	x: 641574	x: 641526	x: 641478	x: 641430	x: 641382
y: 5525345	y: 5525617	y: 5525889	y: 5526161	y: 5526433	y: 5526704	y: 5526976

Abitibi Zone Cross Section G-G'

Hole F-19-156
 Starting Azimut: 178
 Starting Dip: -62
 Length: 366 m



x: 643096
y: 5526075

x: 643048
y: 5526347

x: 643000
y: 5526619

x: 642952
y: 5526891

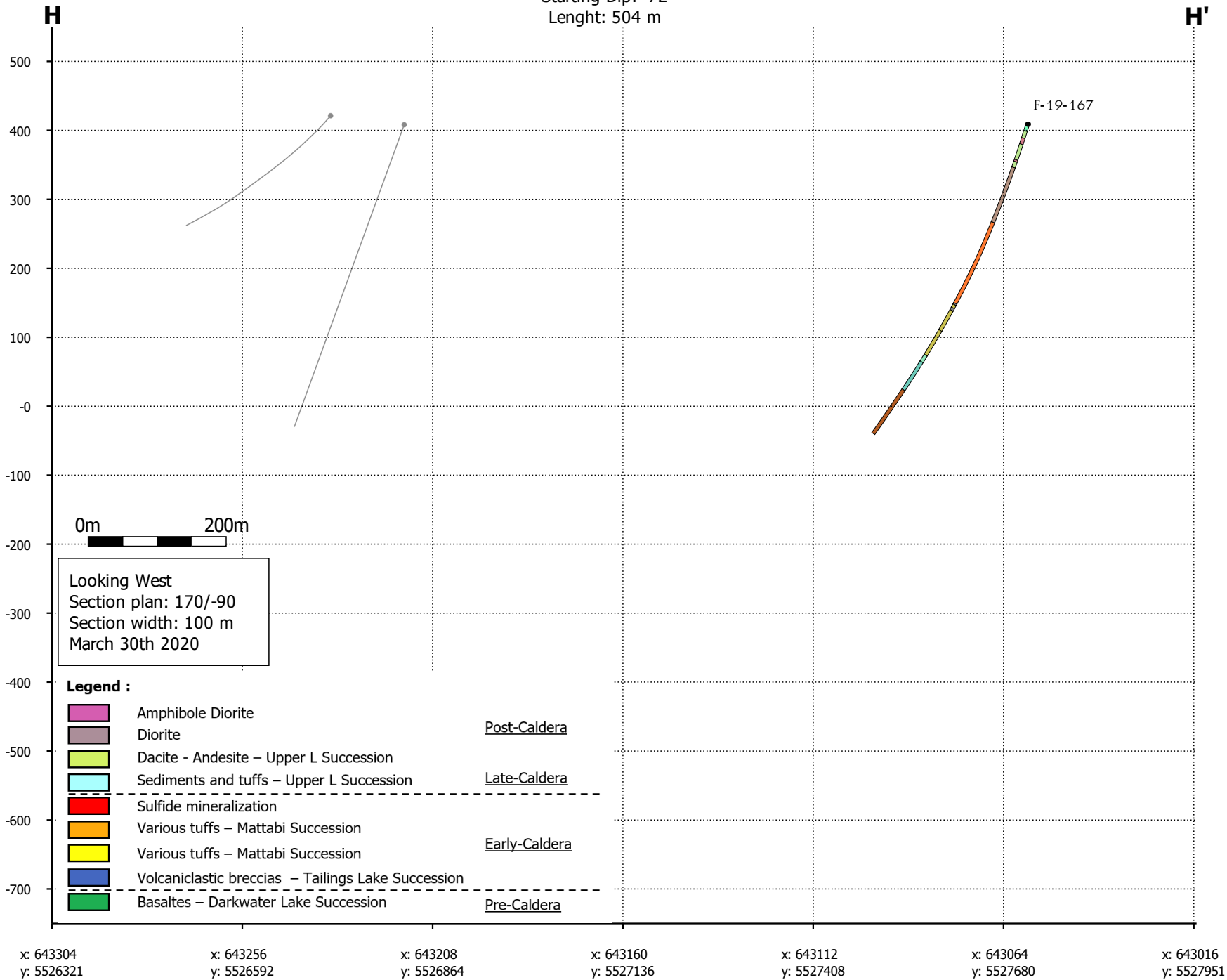
x: 642904
y: 5527163

x: 642856
y: 5527434

x: 642808
y: 5527706

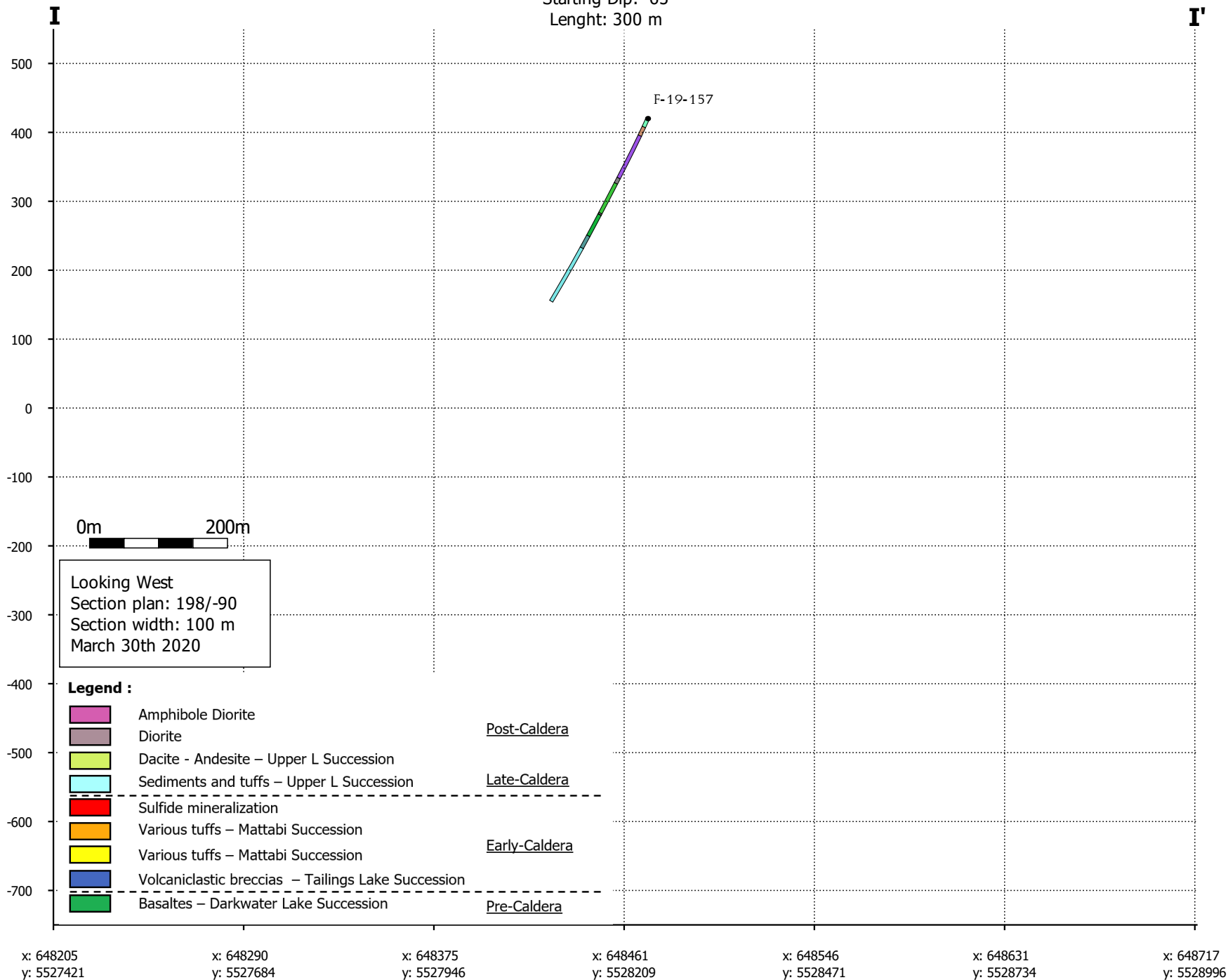
Abitibi Zone Cross Section H-H'

Hole F-19-167
 Starting Azimut: 173
 Starting Dip: -72
 Length: 504 m



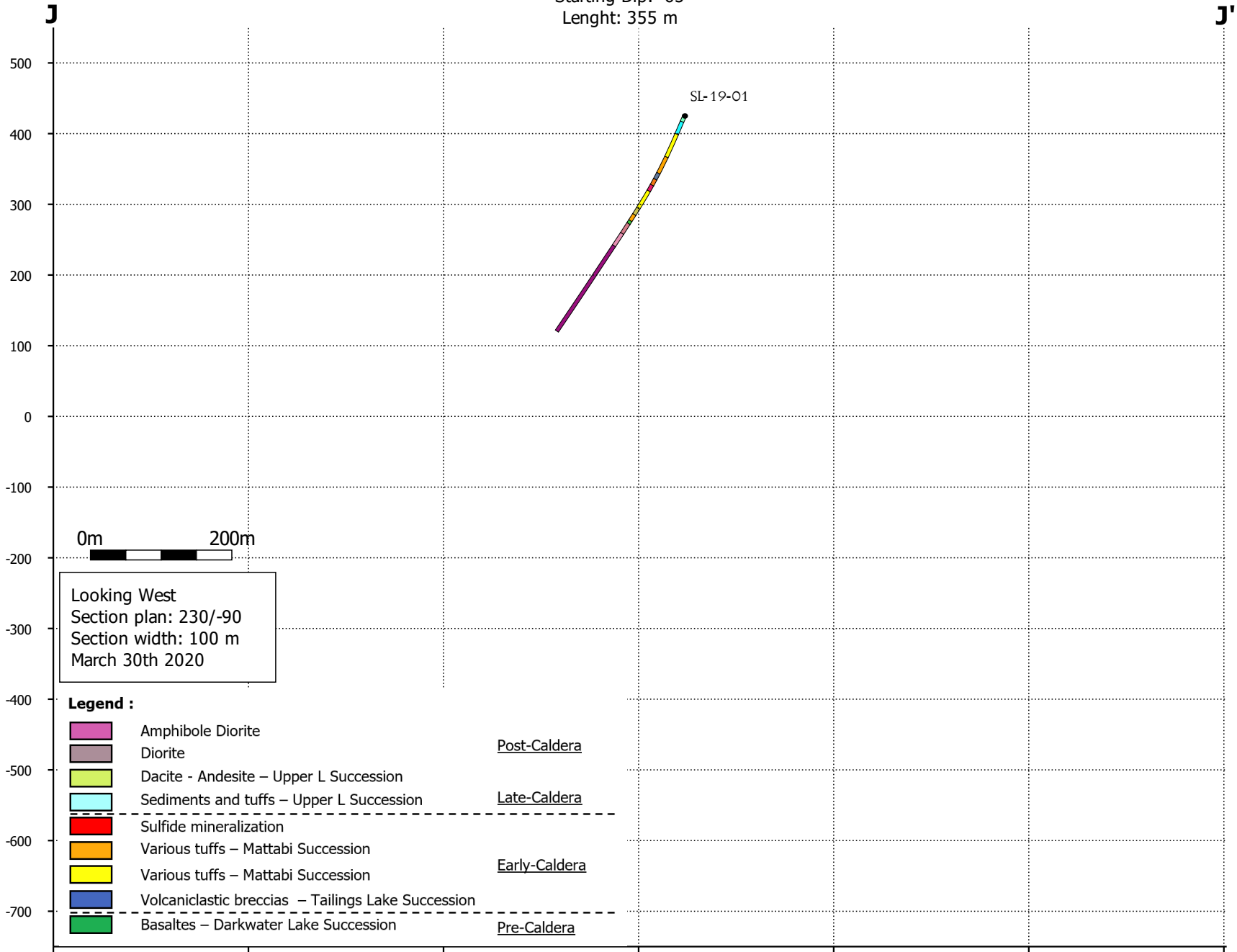
Abitibi Zone Cross Section I-I'

Hole F-19-157
 Starting Azimut: 210
 Starting Dip: -65
 Length: 300 m



Abitibi Zone Cross Section J-J'

Hole SL-19-01
 Starting Azimut: 240
 Starting Dip: -65
 Length: 355 m



Looking West
 Section plan: 230/-90
 Section width: 100 m
 March 30th 2020

Legend :

- Amphibole Diorite
 - Diorite
 - Dacite - Andesite – Upper L Succession
 - Sediments and tuffs – Upper L Succession
 - Sulfide mineralization
 - Various tuffs – Mattabi Succession
 - Various tuffs – Mattabi Succession
 - Volcaniclastic breccias – Tailings Lake Succession
 - Basaltes – Darkwater Lake Succession
- Post-Caldera
Late-Caldera
Early-Caldera
Pre-Caldera

x: 649970	x: 650182	x: 650393	x: 650604	x: 650816	x: 651027	x: 651239
y: 5526554	y: 5526731	y: 5526909	y: 5527086	y: 5527264	y: 5527441	y: 5527618