

We are committed to providing [accessible customer service](#).

If you need accessible formats or communications supports, please [contact us](#).

Nous tenons à améliorer [l'accessibilité des services à la clientèle](#).

Si vous avez besoin de formats accessibles ou d'aide à la communication, veuillez [nous contacter](#).

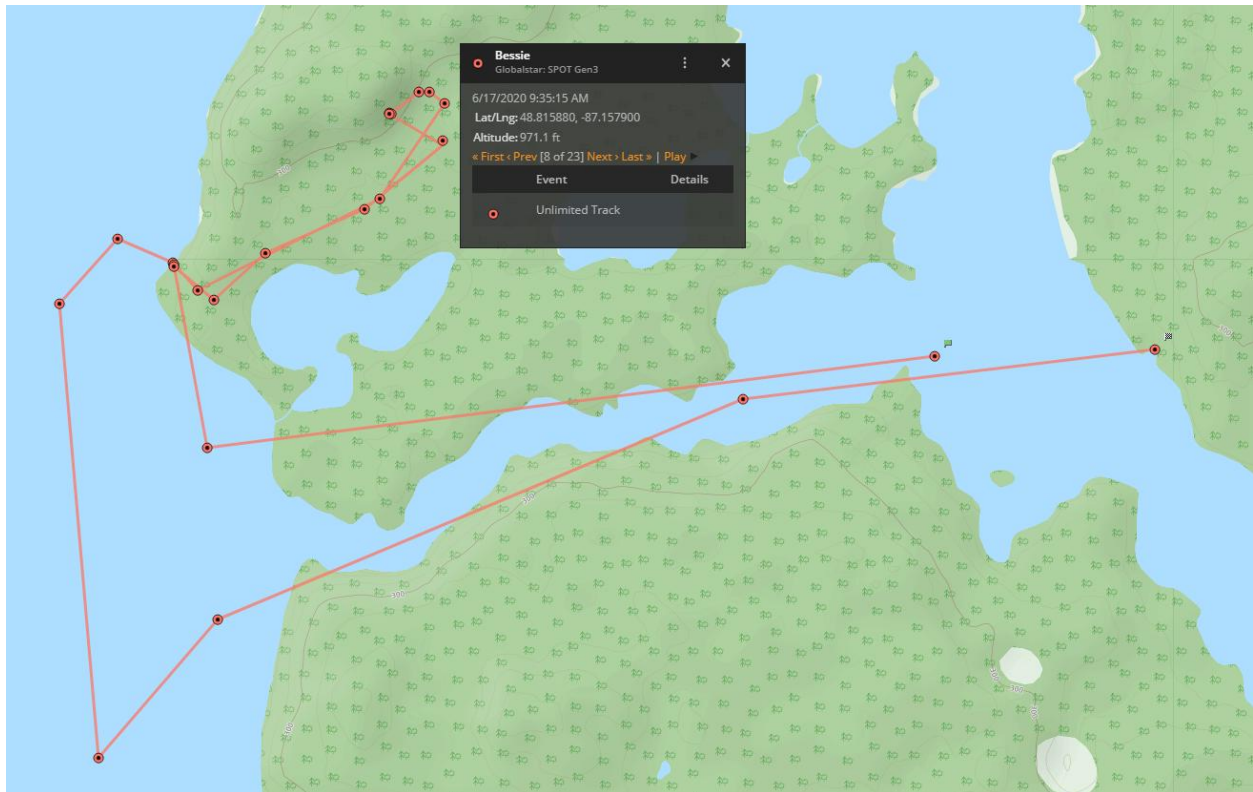
**Assessment Report on the 2020 Prospecting Program  
on our claim in east Priske Township  
Claim # 537571.**



**Prepared by:  
Michael Scott Woolhead**

**Woolhead Mining and Exploration  
305 Corporation Street,  
Porcupine, Ontario.  
P0N 1C0  
July 12<sup>th</sup>, 2020.**

The five cell unit claim #537571 was staked on the strength of historical work done of running a small ball mill and gold recovery mining operation. On June 17th, my partner, Bill Burley and I prospected and assessed the property. While there we found the original ball mill and three buildings in various state of disrepair to the point of falling down. Lots of equipment and parts for the operation have been left on site. In the course of our prospecting we took several significant samples from the pit area, from the mill itself and relevant outcrops. A total of ten (10) samples were collected.



To access our claims we left the government dock north of Terrace Bay and travelled through the channel depicted above in the map and landed at a sand beach. From there we travelled an old road into the claim.





**The open pit was found at GPS coordinates 16, 0488230, 5407097. It measures about 8m wide, 15m deep and 40m long with another 3m of water. The first sample (tag # 203801) was taken from the right side of this picture at 0488234, 5407097.**







**Sample 2 (tag # 203802) which was rusty and showing pyrite, was taken from 0488213, 5407076. Lab results: 0.02 g/mt Au.**



**Sample 3 (tag # 203803) which was taken from the muck pile on the south side of the open pit (the left side of the open pit picture above, showed quartz veining and pyrite. 0488231, 5407098. Lab results: 2.19 g/mt Au.**





**Sample # 4 (tag # 203804) was also retrieved further along the muck pile at 0488240, 5407095. The sample was fine-grained rock with pyrite. Lab results: 3.0 g/mt Au.**



**Sample # 5 (tag # 203805) was a grab sample pulled from muck located at 0488309, 5407176. Lab results: 23.4 g/mt Au.**





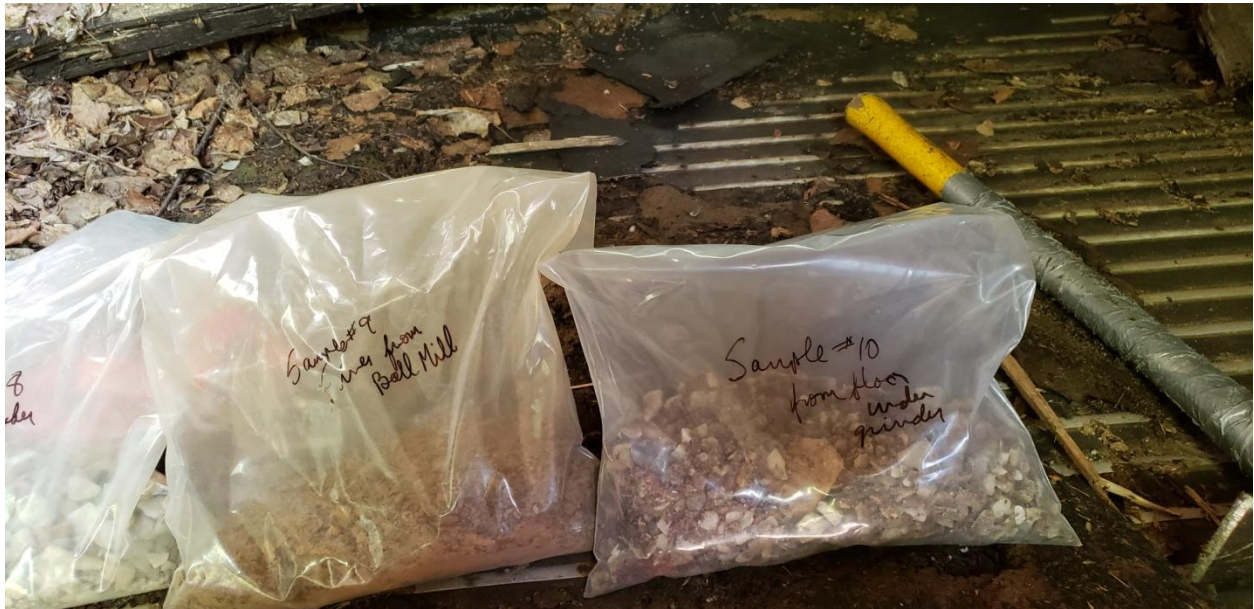
Sample 6 was pulled from an ore pile located beside the crusher at 0488313, 5407178. It was later split into two samples back at the office: sample 6 (tag # 203806) made from the two rocks on the left and sample 7 (tag # 203807) from the rock on the right. Lab results: for # 6 – 0.886 g/mt Au; for # 7 – 7.12 g/mt Au.



Samples 8 (tag # 203808), 9 (tag # 203809), and 10 (tag # 203810) were taken from the mill building which housed the grinder and ball mill, as well as the generator. Sample 8 was largely quartz taken from the exit hopper of the grinder; sample 9 was taken from the exit tube of the ball mill, and sample 10 came from under the grinder on the floor.

Lab results:           for sample # 8: 4.64 g/mt Au.  
                          for sample # 9: 27.1 g/mt Au.  
                          for sample # 10: 5.83 g/mt Au.





The samples above are sitting on the gold floatation table in the mill building.



Ball mill in the foreground; grinder and grinder hopper at the rear.





**Generator to run the operation.**



**Better view of the gold floatation table.**





**Dozer for transportation . . . unless you prefer an older style truck pictured below:**



**All samples were submitted to the ACT lab in Timmins on June 26<sup>th</sup>, 2020.**

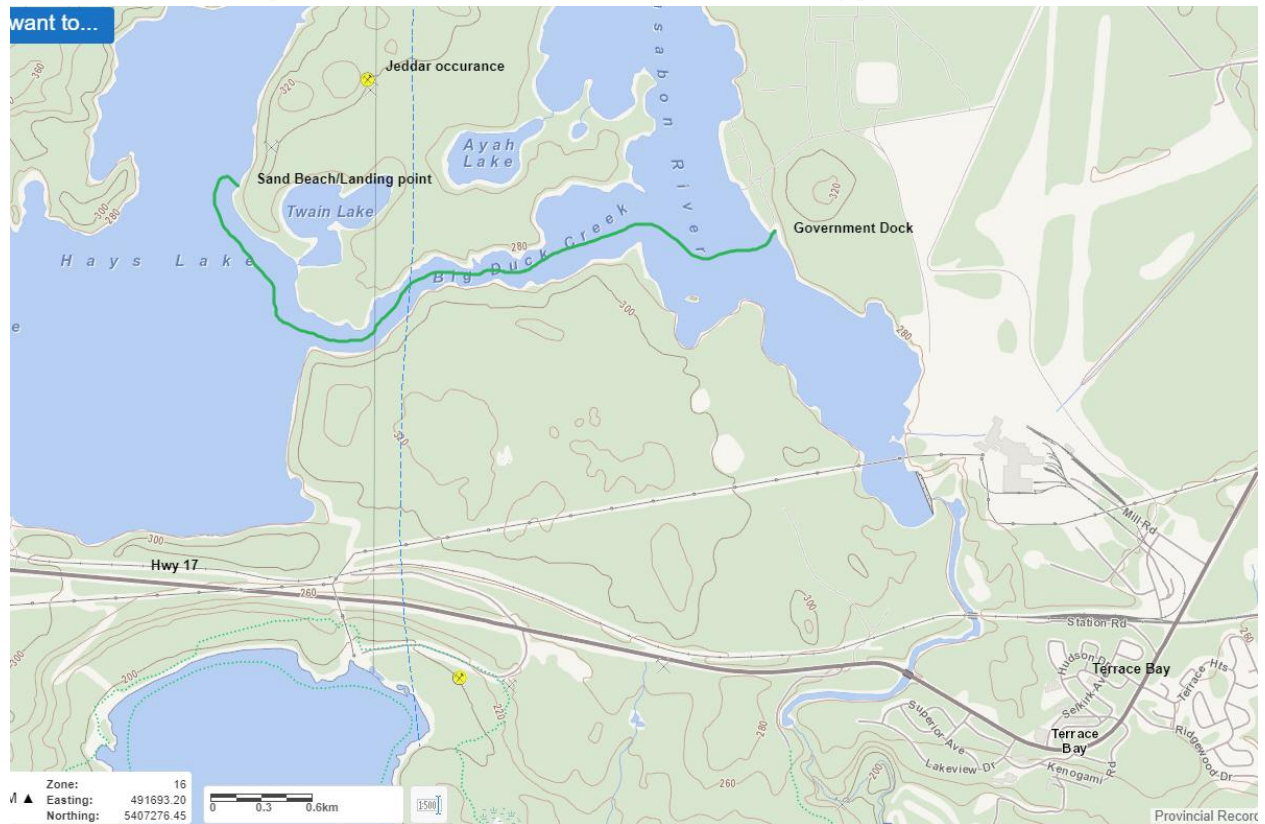


June 17 <sup>th</sup> , 2020	GPS (16)	Lab results (g/mt Au)
Sample # 1 Tag #203801	488234, 5407097	0.005
Sample # 2 203802	488213, 5407076	0.02
Sample # 3 203803	488231, 5407098	2.19
Sample # 4 203804	488240, 5407095	3.0
Sample # 5 203805	488309, 5407176	23.4
Sample # 6 203806	488313, 5407178	0.886
Sample # 7 203807	488313, 5407178	7.12
Sample # 8 203808	From Crusher	4.64
Sample # 9 203809	From Ball Mill	27.1
Sample # 10 203810	From floor under crusher	5.83

**Traverse Map of Prospecting Journey**

*Final 2 maps in this collection details the precise samples taken in respect to the claim boundaries.*

**Green line on the map is the route we needed to boat to our landing point:**

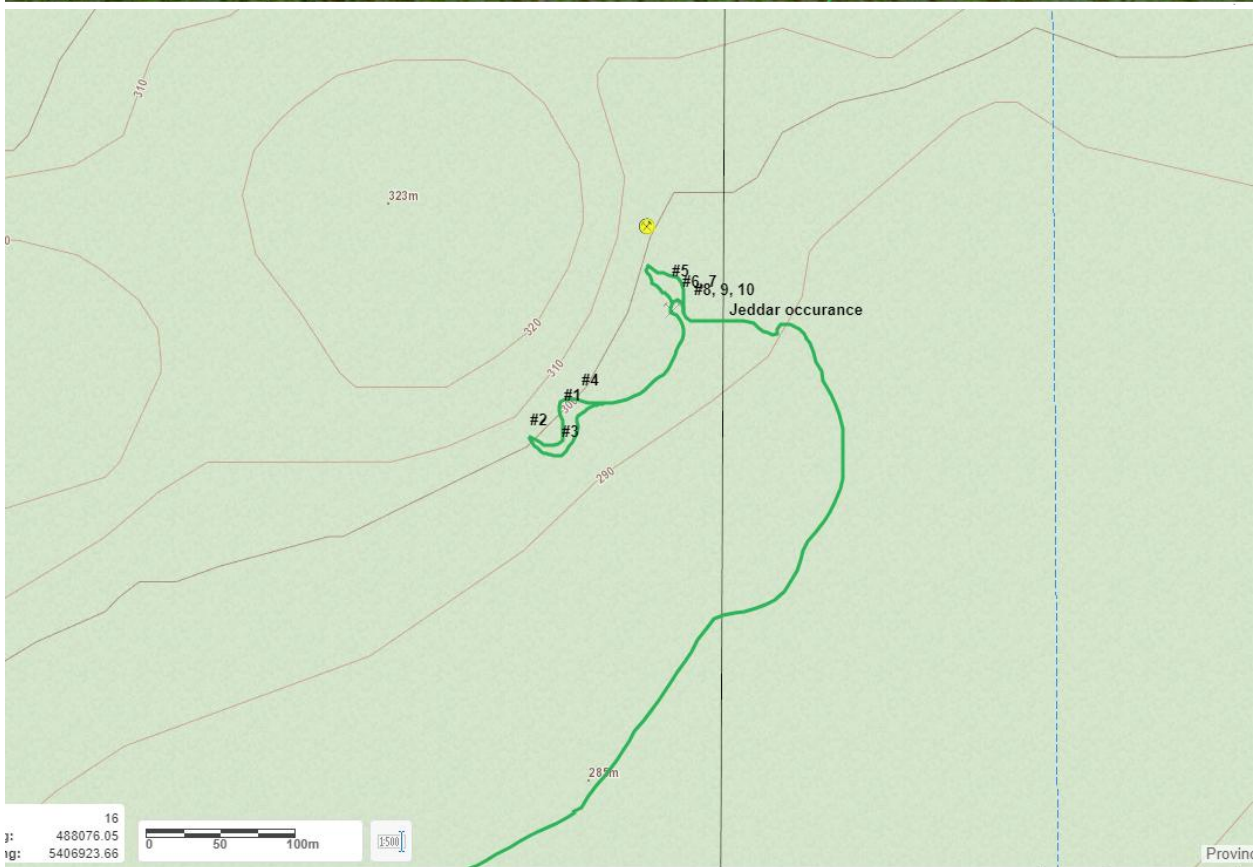




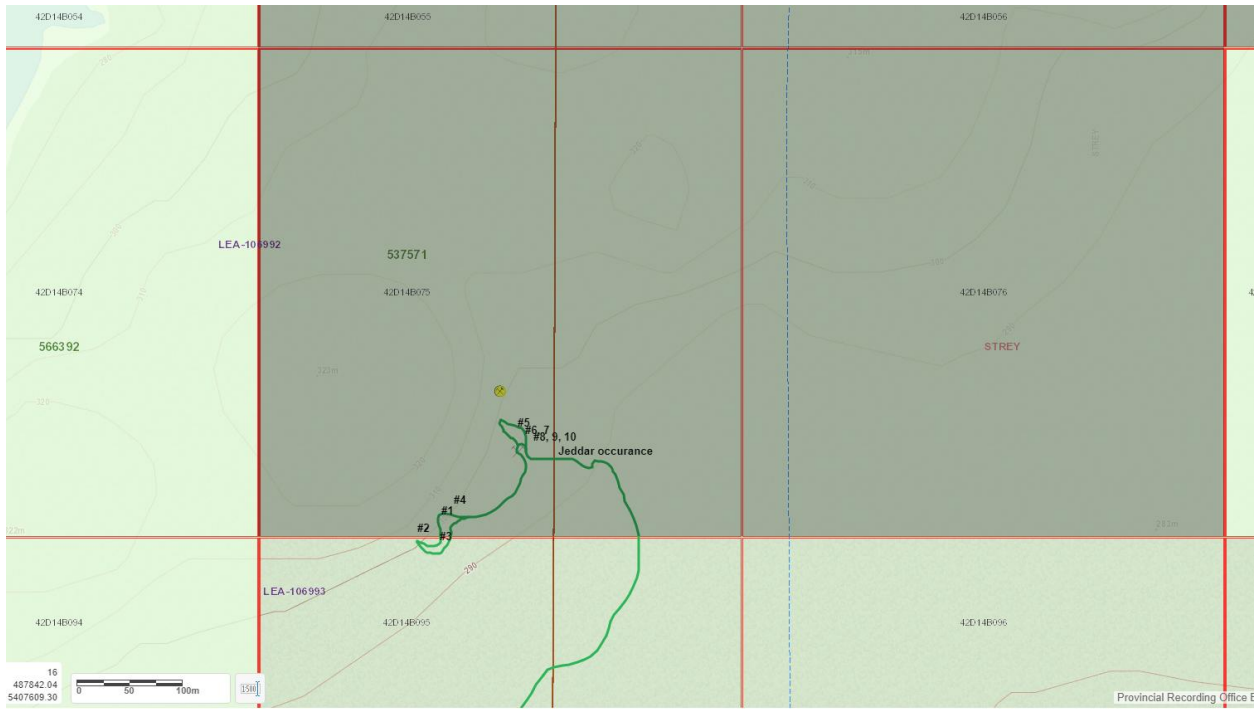


Green line denotes our traverse.

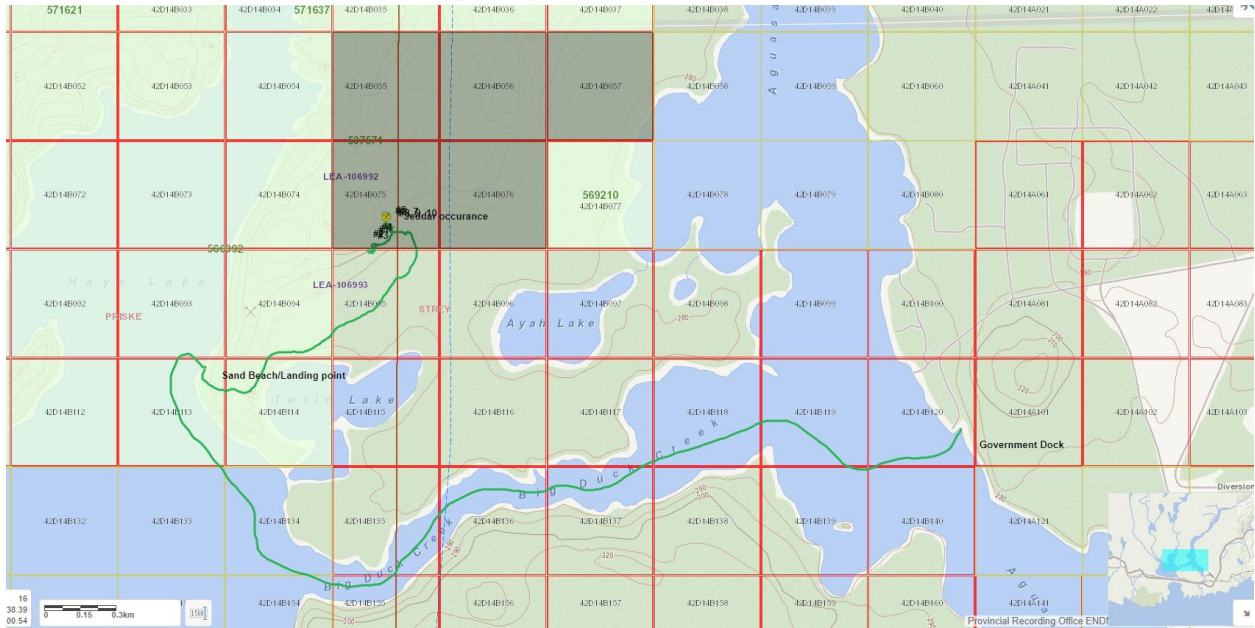








**Final traverse of prospecting trip superimposed on the claim – above and below.**



**Daily Log for Prospecting on Jeddar claim # #537571**

Workers for this trip were Scott Woolhead of 305 Corporation Street, Porcupine, Ontario P0N 1C0 and Bill Burley of 661 Falcon Street, Porcupine, Ontario, P0N 1C0.

**June 16<sup>th</sup>, 2020**

Bill Burley left Timmins shortly after 7am this morning to meet me Scott Woolhead in Schreiber Ontario where I was staying for another job. As a boat was needed to access our claims, Bill brought his own boat. Bill arrived in Terrace Bay where he is staying with his daughter. Later in the day, Bill met with me



to plan our day out tomorrow. Reconnaissance of the boat dock on the south shore of Hays Lake off of the old Hays Lake road showed us that we would not be able to launch the boat from here as the water was too shallow to float the boat off of the trailer. From the advice of a local resident we were directed to the government dock located on the eastern shore of Hays Lake, which is accessed from the logging roads north of the town of Terrace Bay and past the lumber mill.

Two persons working at \$350/day/person: \$ 700.  
Boat: \$200/day

Kilometres travelled: 656 km.  
Hotel for the night: \$ 85.88

### **June 17<sup>th</sup>, 2020.**

Bill Burley and I left at 8:30am to begin our prospecting around the Jeddar occurrence and mine. We left the government dock and headed through the north channel of Hays Lake towards our claim. As we drew closer to our target we were able to land on a sandy beach where an old road fronted at this beach. This turned out to be the old access road to the Jeddar mill site. It proved to be a welcomed route with only a couple of downed trees to impede our progress.

As we drew closer to our target (16, 0488230, 5407097) we began to see abandoned and rusted out vehicles and equipment/tools from the previous owners. Inspection of the old buildings turned up two collapsed work sheds and one partially intact mill building. It looks as if the previous owners just up and left in the middle of their shift. There is still grindings in the grinder and residue in the ball mill. The drill rods have not been pulled and the mill area has not been cleaned in a manner that I would expect if one was milling product that would run gold. Of course there was the normal detris of an abandoned and neglected site, but the additional run of ore material shows a certain callousness to their last day worked. (Indeed analytical testing of the mill material would run gold values of 4.6, 27.1, and 5.8 g/mt.)

Bill and I then followed our noses through the bush and around the old mill site. We took note of the open pit and sampled at various locations that caught our eye. In total ten (10) samples were collected today including from the first stage rock crusher, from the floor under the crusher and from the ball mill.

Two persons working at \$350/day/person: \$ 700.  
Boat: \$200/day

Kilometres travelled: 60 km.  
Hotel for the night: \$ 85.88

### **June 18<sup>th</sup>, 2020.**

Satisfied with our work from yesterday, we both travelled the 600 kilometres home, leaving at 9am and arriving shortly after 4. I prepped the samples for the lab and they were submitted on the 26<sup>th</sup> of June.

Two persons working at \$350/day/person: \$ 700.  
Boat: \$200/day

Kilometres travelled: 600 km.



Quality Analysis ...



Innovative Technologies

Woolhead Oil and Land Co  
305 Corporation Street  
Porcupine Ontario P0N 1C0  
Canada

Report No.: A20-06739  
Report Date: 08-Jul-20  
Date Submitted: 26-Jun-20  
Your Reference: JEDDAR

ATTN: CEO/President Scott Woolhead

## CERTIFICATE OF ANALYSIS

10 Rock samples were submitted for analysis.

The following analytical package(s) were requested:		Testing Date:
1A2-Timmins (10g/m t)	QOP AA-Au (Au - Fire Assay AA)	2020-07-06 13:30:43
1A3-Timmins	QOP AA-Au (Au - Fire Assay Gravimetric)	2020-07-07 11:57:26

REPORT A20-06739

This report may be reproduced without our consent. If only selected portions of the report are reproduced, permission must be obtained. If no instructions were given at time of sample submittal regarding excess material, it will be discarded within 90 days of this report. Our liability is limited solely to the analytical cost of these analyses. Test results are representative only of material submitted for analysis.

Notes:

If value exceeds upper limit we recommend reassay by fire assay gravimetric-Code 1A3.

CERTIFIED BY:

A handwritten signature in black ink, appearing to read "Emmanuel Esemé".

Emmanuel Esemé, Ph.D.  
Quality Control Coordinator

ACTIVATION LABORATORIES LTD.  
1752 Riverside Drive, Timmins, Ontario, Canada, P4R 1N1  
TELEPHONE +705 264-0123 or +1.888.228.5227 FAX +1.905.648.9613  
E-MAIL Timmins@actlabs.com ACTLABS GROUP WEBSITE www.actlabs.com



**Results**

**Activation Laboratories Ltd.**

**Report: A20-06739**

Analyte Symbol	Au	Au
Unit Symbol	g/mt	g/tonne
Lower Limit	0.005	0.03
Method Code	FA-AA	FA-GRA
203801	0.005	
203802	0.020	
203803	2.19	
203804	3.00	
203805	> 10.0	23.4
203806	0.886	
203807	7.12	
203808	4.64	
203809	> 10.0	27.1
203810	5.83	

**QC**

**Activation Laboratories Ltd.**

**Report: A20-06739**

Analyte Symbol	Au	Au
Unit Symbol	g/mt	g/tonne
Lower Limit	0.005	0.03
Method Code	FA-AA	FA-GRA
SN75 Meas		9.00
SN75 Cert		8.67
SN75 Meas		8.80
SN75 Cert		8.67
OREAS 257 Meas		14.7
OREAS 257 Cert		14.18
OREAS 257 Meas		14.5
OREAS 257 Cert		14.18
Oreas 237 (Fire Assay) Meas	2.12	
Oreas 237 (Fire Assay) Cert	2.21	
Oreas E1336 (Fire Assay) Meas	0.514	
Oreas E1336 (Fire Assay) Cert	0.510	
203809 Orig		26.1
203809 Dup		28.0
Method Blank	< 0.005	
Method Blank	< 0.005	
Method Blank		< 0.03
Method Blank		< 0.03
Method Blank		< 0.03
Method Blank		< 0.03