

We are committed to providing [accessible customer service](#).

If you need accessible formats or communications supports, please [contact us](#).

Nous tenons à améliorer [l'accessibilité des services à la clientèle](#).

Si vous avez besoin de formats accessibles ou d'aide à la communication, veuillez [nous contacter](#).

**WESDOME GOLD MINES LTD.**

**EAGLE RIVER MINE COMPLEX**

**Report on**

**2017 Diamond Drilling**

**Eagle River Mine Surface Project 100 and Eagle River North Project 105**

**Point Isacor Township**

**Sault Ste. Marie Mining District**

**Province of Ontario**

**Canada**

**N.T.S. 41 N/14**

**Wawa, Ontario  
January 2020**

**Nathan Forslund, P.Geol.**

## **FOREWORD**

This report presents a description and the results of major drill program completed by Wesdome Gold Mines Ltd. in 2017 on the Eagle River Mine property situated near the town of Wawa, Ontario.

## SUMMARY

During 2017, Wesdome Gold Mines Ltd. completed a major diamond drill program on its Eagle River Complex located near Wawa, Ontario, where it operates the Eagle River underground and the Mishi open pit gold mines. This program constitutes a follow up program on the favourable results obtained in 2016.

This report mainly focuses on diamond drilling at the Eagle River Mine which followed up on the favourable results obtained on the mine's multiple ore zones (Project 100) in 2016. A minor portion of the program consisted of deepening of two drill holes along the geologic-tectonic package flanking the north side of the mine's host diorite stock (Project 105).

On the deposit, 16 drill holes were completed for an aggregate total of 4672m of drilling.

The drill program on the mine's ore zone consisted of step out drilling on the favourable 2016 gold intersections. This was successful in expanding the targeted mineralised zones

At the mine, gold enrichment outlined in 2017 continues to be associated with east-west shears accompanied by quartz veining; whereas along the northern flank of the diorite stock, gold enrichment is also associated with east-west deformation locally accompanied by quartz and at other locations, associated with an oxide-facies Iron Formation.

The more significant gold intersections of the 2017 drilling program are listed below:

- 1.3m of 24g/t Au in hole ERM-2017-06
- 2m of 10.81g/t Au in hole ERM-2017-14
- 1m of 19.76g/t Au in hole ERM-2017-01
- 2.7m of 2.93g/t Au in hole ERM-2017-07
- 3.5m of 2g/t Au in hole ERM-2017-03
- 2.1m of 2.71g/t Au in hole ERM-2017-07
- 1m of 5.23g/t Au in hole ERM-2017-11
- 1m of 5.16g/t Au in hole ERM-2017-13

Because of physiographic constraints, follow up drilling on some of the well mineralized zones outlined in 2016 was not possible. Further efforts to follow up on these mineralized zone are recommended, perhaps by drilling northward and down-dip from the mine series hill.

## Contents

FOREWORD .....	2
SUMMARY .....	3
1.0 INTRODUCTION .....	5
1.1 Property Titles - Eagle River Mine Property.....	6
1.2 Location, Access and Infrastructure.....	18
1.3 Previous Exploration .....	20
1.4 Regional Geology .....	20
1.5 Property and Economic Geology .....	21
2.0 2017 DRILL PROGRAM DESCRIPTION AND RESULTS.....	22
2.1 Program Description .....	22
2.2 Program Results .....	24
3.0 CONCLUSIONS .....	28
4.0 RECOMMENDATIONS.....	28
5.0 REFERENCES .....	28
Figure 1- Provincial Location Map.....	19
Figure 2- Property Location Map .....	20
Table 1 - Single Cell Mining Claims .....	6
Table 2 - Mining Tenures .....	18
Table 3 - Drill hole collars.....	23
Table 4 - Standard results. ....	24
Table 5 - Program results .....	24
Appendix A - Maps	
Appendix B - Drill Sections	
Appendix C - Drill Logs and hole Summaries	
Appendix D - QA/QC	
Appendix E - Receipts	
Appendix F - Statements of Qualifications	

## **1.0 INTRODUCTION**

During 2017, Wesdome Gold Mines Ltd. completed a major diamond drill program on its Eagle River Complex located 50 kilometres west of Wawa, Ontario.

The Complex is made up of two large properties with two operating gold mines, the Eagle River underground and the Mishi open pit mines. These operations share common infrastructure and milling facilities located at the Mishi Mine, as well as an assay lab in Wawa.

This report focuses on diamond drilling completed in the southern part of the Complex, on the Eagle River Mine gold deposit and its surroundings (Projects 100 and 105).

The 2017 program consisted of drilling tectonic projections of 2016 drill intersections which displayed particularly strong gold enrichment along the mines' multiple gold zones; and of completing two drill holes north of the mine which had been started in 2016.

On the deposit, designated Project 100, drill hole series ERM-2017-01 to ERM-2017-16, 4672m of NQ-size drilling were completed in 16 drill holes from May 24<sup>th</sup> to July 14<sup>th</sup>, 2017.

Planning and organization for the field program was completed at the end of 2016 by Marc Ducharme, P.Geo. of Val-d'Or, Quebec, Chief Exploration Geologist at Wesdome Mines and Mr. George Mannard, P.Geo. of Toronto, Ontario.

Mr. Nathan Forslund, author of this work report created and managed all data entry/storage systems; reviewed, tabulated, validated and then entered all data pertaining to drill collar surface positioning/orientation, down-hole orientation measurements and assay results into the Geotic core logging program. Mr. Forslund also prepared all compilation tables, illustrations, maps and drill sections.

Mr. Robert J. Tremblay, P.Geo. was retained under a renewed one-year contract as Senior Exploration Geologist, to assist M. Ducharme in the supervision of drilling activities. In order to participate in the 2017 follow up program, Mr. Tremblay renewed his Temporary Member permit No. 2644 with the A.P.G.O.

Mr. Tremblay's contribution to the 2017 drill report consisted of updating Sections 1.0 and 2.1 largely drawn from the 2016 work report; reviewing and correcting text entries in the drill logs; and reviewing down-hole and surface orientation data in order to assist the author in assessing their validity and reliability.

The drill contract was tendered to G4 Drilling Ltd. of Val-d'Or, Quebec. Drilling operations at the Eagle River mine were guided by its principal site foremen Mr. Jonathan Dubeau of Val-d'Or Quebec and Mr. Jean-Benoit Gosselin from Lebel-sur-Quévillon, Quebec.

The personnel involved in the 2017 program are:

Ray Grenier, Technician, Montréal, Qc.

Ryan Humphries, G.I.T. Barry, On.

Matthew Husslage, Victoria, B.C.

Rob Rabiej, Sudbury, On.

Ian Chappell, P.Geo. of Sudbury, On., involved during one two-week period only.

Nathan Forslund, P.Geo., Thunder Bay, On.

Jordan Laarman, P.Geo., Thunder Bay, On.

Daniel Belisle, Wawa, On.

Justus Day-André, Wawa, On.

Christian Lagacé, Wawa, On.

Gerald Lewis, Michipicoten First Nation, On.

Brandan Penno, Sault-Ste-Marie, On.

Jim Martin, Technician, Thunder Bay, On.

G4 Drilling and Wesdome crews worked on overlapping work-holiday rotations to ensure that drilling operations could be conducted on a continuous basis 24 hours a day, 7 days a week during the entire work program.

Finally, the author wishes to extend his gratitude to all Eagle River Complex maintenance staff, electricians and other support staff (loader-excavator operators, warehouse personnel, etc.) who provided reliable on-going support throughout the program; and to Mr. Daniel Lapointe (Superintendent) and Mr. Al Mann (Pit Supervisor) of the Mishi Mine and their staff for their valuable support and for sharing their office facilities with Exploration staff..

### 1.1 Property Titles - Eagle River Mine Property

The Eagle River property is made up of three mining leases totalling 882 hectares and 426 contiguous single cell mining claims, covering a total area of 9205 hectares. The claims are listed below:

Table 1 - Single Cell Mining Claims

Township/Area	Cell Number	Cell Type	Date Issued	Anniversary	Holder
DAVID LAKES AREA	184023	SCMC	2018-04-10	2019-08-06	(100) WESDOME GOLD MINES LTD.
DAVID LAKES AREA	302864	SCMC	2018-04-10	2019-08-06	(100) WESDOME GOLD MINES LTD.
GROSEILLIERS	344346	SCMC	2018-04-10	2019-10-07	(100) WESDOME GOLD MINES LTD.
GROSEILLIERS	336430	SCMC	2018-04-10	2019-10-07	(100) WESDOME GOLD MINES LTD.
GROSEILLIERS	339160	SCMC	2018-04-10	2019-10-07	(100) WESDOME GOLD MINES LTD.
GROSEILLIERS	341521	SCMC	2018-04-10	2019-01-06	(75) AGNICO EAGLE MINES LIMITED, (25) WESDOME GOLD MINES LTD.
GROSEILLIERS	339814	SCMC	2018-04-10	2019-10-07	(100) WESDOME GOLD MINES LTD.
GROSEILLIERS	105087	SCMC	2018-04-10	2019-07-20	(100) WESDOME GOLD MINES LTD.
GROSEILLIERS	105742	SCMC	2018-04-10	2019-10-07	(100) WESDOME GOLD MINES LTD.
GROSEILLIERS	107942	SCMC	2018-04-10	2019-09-08	(100) WESDOME GOLD MINES LTD.
GROSEILLIERS	107517	SCMC	2018-04-10	2018-11-03	(100) WESDOME GOLD MINES LTD.
GROSEILLIERS	107533	BCMC	2018-04-10	2019-01-06	(75) AGNICO EAGLE MINES LIMITED, (25) WESDOME GOLD MINES LTD.
GROSEILLIERS	111596	BCMC	2018-04-10	2018-11-03	(100) WESDOME GOLD MINES LTD.

GROSEILLIERS	109520	SCMC	2018-04-10	2018-11-03	(100) WESDOME GOLD MINES LTD.
GROSEILLIERS	120006	SCMC	2018-04-10	2019-10-07	(100) WESDOME GOLD MINES LTD.
GROSEILLIERS	119437	SCMC	2018-04-10	2019-10-07	(100) WESDOME GOLD MINES LTD.
GROSEILLIERS	119438	SCMC	2018-04-10	2019-10-07	(100) WESDOME GOLD MINES LTD.
GROSEILLIERS	118797	SCMC	2018-04-10	2018-11-03	(100) WESDOME GOLD MINES LTD.
GROSEILLIERS	123292	SCMC	2018-04-10	2018-11-03	(100) WESDOME GOLD MINES LTD.
GROSEILLIERS	127370	SCMC	2018-04-10	2019-10-07	(100) WESDOME GOLD MINES LTD.
GROSEILLIERS	127399	SCMC	2018-04-10	2018-11-03	(100) WESDOME GOLD MINES LTD.
GROSEILLIERS	128127	BCMC	2018-04-10	2019-01-06	(75) AGNICO EAGLE MINES LIMITED, (25) WESDOME GOLD MINES LTD.
GROSEILLIERS	133403	SCMC	2018-04-10	2018-11-03	(100) WESDOME GOLD MINES LTD.
GROSEILLIERS	137313	SCMC	2018-04-10	2019-10-07	(100) WESDOME GOLD MINES LTD.
GROSEILLIERS	138228	SCMC	2018-04-10	2018-11-03	(100) WESDOME GOLD MINES LTD.
GROSEILLIERS	138123	SCMC	2018-04-10	2019-10-07	(100) WESDOME GOLD MINES LTD.
GROSEILLIERS	139388	SCMC	2018-04-10	2019-10-07	(100) WESDOME GOLD MINES LTD.
GROSEILLIERS	142532	SCMC	2018-04-10	2018-11-03	(100) WESDOME GOLD MINES LTD.
GROSEILLIERS	143894	SCMC	2018-04-10	2019-01-06	(75) AGNICO EAGLE MINES LIMITED, (25) WESDOME GOLD MINES LTD.
GROSEILLIERS	142904	SCMC	2018-04-10	2019-09-08	(100) WESDOME GOLD MINES LTD.
GROSEILLIERS	144203	SCMC	2018-04-10	2019-10-07	(100) WESDOME GOLD MINES LTD.
GROSEILLIERS	149523	SCMC	2018-04-10	2019-10-07	(100) WESDOME GOLD MINES LTD.
GROSEILLIERS	155203	SCMC	2018-04-10	2019-10-07	(100) WESDOME GOLD MINES LTD.
GROSEILLIERS	156501	BCMC	2018-04-10	2018-11-03	(100) WESDOME GOLD MINES LTD.
GROSEILLIERS	155932	SCMC	2018-04-10	2019-10-07	(100) WESDOME GOLD MINES LTD.
GROSEILLIERS	161042	SCMC	2018-04-10	2018-11-03	(100) WESDOME GOLD MINES LTD.
GROSEILLIERS	161909	BCMC	2018-04-10	2018-11-03	(100) WESDOME GOLD MINES LTD.
GROSEILLIERS	161653	SCMC	2018-04-10	2018-11-03	(100) WESDOME GOLD MINES LTD.
GROSEILLIERS	164574	SCMC	2018-04-10	2018-11-03	(100) WESDOME GOLD MINES LTD.
GROSEILLIERS	166424	SCMC	2018-04-10	2019-10-07	(100) WESDOME GOLD MINES LTD.
GROSEILLIERS	169053	SCMC	2018-04-10	2018-11-03	(100) WESDOME GOLD MINES LTD.
GROSEILLIERS	174211	SCMC	2018-04-10	2018-11-03	(100) WESDOME GOLD MINES LTD.
GROSEILLIERS	174821	SCMC	2018-04-10	2020-01-06	(75) AGNICO EAGLE MINES LIMITED, (25) WESDOME GOLD MINES LTD.
GROSEILLIERS	177550	SCMC	2018-04-10	2019-01-06	(75) AGNICO EAGLE MINES LIMITED, (25) WESDOME GOLD MINES LTD.
GROSEILLIERS	179828	SCMC	2018-04-10	2019-10-07	(100) WESDOME GOLD MINES LTD.
GROSEILLIERS	180513	SCMC	2018-04-10	2018-11-03	(100) WESDOME GOLD MINES LTD.
GROSEILLIERS	179850	SCMC	2018-04-10	2019-10-07	(100) WESDOME GOLD MINES LTD.
GROSEILLIERS	181978	SCMC	2018-04-10	2018-11-03	(100) WESDOME GOLD MINES LTD.
GROSEILLIERS	181260	SCMC	2018-04-10	2019-10-07	(100) WESDOME GOLD MINES LTD.
GROSEILLIERS	186818	SCMC	2018-04-10	2020-01-06	(75) AGNICO EAGLE MINES LIMITED, (25) WESDOME GOLD MINES LTD.
GROSEILLIERS	186569	SCMC	2018-04-10	2018-11-03	(100) WESDOME GOLD MINES LTD.
GROSEILLIERS	186578	SCMC	2018-04-10	2018-11-03	(100) WESDOME GOLD MINES LTD.
GROSEILLIERS	186586	SCMC	2018-04-10	2019-01-06	(75) AGNICO EAGLE MINES LIMITED, (25) WESDOME GOLD MINES LTD.



GROSEILLIERS	183303	SCMC	2018-04-10	2019-10-07	(100) WESDOME GOLD MINES LTD.
GROSEILLIERS	188628	SCMC	2018-04-10	2018-11-03	(100) WESDOME GOLD MINES LTD.
GROSEILLIERS	189069	SCMC	2018-04-10	2019-10-07	(100) WESDOME GOLD MINES LTD.
GROSEILLIERS	188350	SCMC	2018-04-10	2018-11-03	(100) WESDOME GOLD MINES LTD.
GROSEILLIERS	190140	SCMC	2018-04-10	2019-10-07	(100) WESDOME GOLD MINES LTD.
GROSEILLIERS	190210	SCMC	2018-04-10	2018-11-03	(100) WESDOME GOLD MINES LTD.
GROSEILLIERS	191370	SCMC	2018-04-10	2018-11-03	(100) WESDOME GOLD MINES LTD.
GROSEILLIERS	191371	SCMC	2018-04-10	2018-11-03	(100) WESDOME GOLD MINES LTD.
GROSEILLIERS	197099	SCMC	2018-04-10	2019-10-07	(100) WESDOME GOLD MINES LTD.
GROSEILLIERS	199786	SCMC	2018-04-10	2019-10-07	(100) WESDOME GOLD MINES LTD.
GROSEILLIERS	201113	BCMC	2018-04-10	2018-11-03	(100) WESDOME GOLD MINES LTD.
GROSEILLIERS	199534	SCMC	2018-04-10	2018-11-03	(100) WESDOME GOLD MINES LTD.
GROSEILLIERS	199535	SCMC	2018-04-10	2018-11-03	(100) WESDOME GOLD MINES LTD.
GROSEILLIERS	201050	SCMC	2018-04-10	2019-10-07	(100) WESDOME GOLD MINES LTD.
GROSEILLIERS	203550	SCMC	2018-04-10	2019-10-07	(100) WESDOME GOLD MINES LTD.
GROSEILLIERS	202207	SCMC	2018-04-10	2018-11-03	(100) WESDOME GOLD MINES LTD.
GROSEILLIERS	202208	SCMC	2018-04-10	2019-10-07	(100) WESDOME GOLD MINES LTD.
GROSEILLIERS	202348	SCMC	2018-04-10	2018-11-03	(100) WESDOME GOLD MINES LTD.
GROSEILLIERS	211575	SCMC	2018-04-10	2018-11-03	(100) WESDOME GOLD MINES LTD.
GROSEILLIERS	215164	SCMC	2018-04-10	2019-10-07	(100) WESDOME GOLD MINES LTD.
GROSEILLIERS	216242	SCMC	2018-04-10	2019-10-07	(100) WESDOME GOLD MINES LTD.
GROSEILLIERS	217854	SCMC	2018-04-10	2018-11-03	(100) WESDOME GOLD MINES LTD.
GROSEILLIERS	215849	SCMC	2018-04-10	2018-11-03	(100) WESDOME GOLD MINES LTD.
GROSEILLIERS	221923	BCMC	2018-04-10	2019-01-06	(75) AGNICO EAGLE MINES LIMITED, (25) WESDOME GOLD MINES LTD.
GROSEILLIERS	226074	SCMC	2018-04-10	2019-09-08	(100) WESDOME GOLD MINES LTD.
GROSEILLIERS	229468	SCMC	2018-04-10	2018-11-03	(100) WESDOME GOLD MINES LTD.
GROSEILLIERS	230020	SCMC	2018-04-10	2019-10-07	(100) WESDOME GOLD MINES LTD.
GROSEILLIERS	228051	SCMC	2018-04-10	2019-10-07	(100) WESDOME GOLD MINES LTD.
GROSEILLIERS	228076	SCMC	2018-04-10	2020-01-06	(75) AGNICO EAGLE MINES LIMITED, (25) WESDOME GOLD MINES LTD.
GROSEILLIERS	231332	SCMC	2018-04-10	2018-11-03	(100) WESDOME GOLD MINES LTD.
GROSEILLIERS	233943	SCMC	2018-04-10	2018-11-03	(100) WESDOME GOLD MINES LTD.
GROSEILLIERS	234415	SCMC	2018-04-10	2019-01-06	(75) AGNICO EAGLE MINES LIMITED, (25) WESDOME GOLD MINES LTD.
GROSEILLIERS	236643	SCMC	2018-04-10	2018-11-03	(100) WESDOME GOLD MINES LTD.
GROSEILLIERS	236675	SCMC	2018-04-10	2019-10-07	(100) WESDOME GOLD MINES LTD.
GROSEILLIERS	237369	SCMC	2018-04-10	2019-07-20	(100) WESDOME GOLD MINES LTD.
GROSEILLIERS	237036	SCMC	2018-04-10	2019-10-07	(100) WESDOME GOLD MINES LTD.
GROSEILLIERS	240965	SCMC	2018-04-10	2018-11-03	(100) WESDOME GOLD MINES LTD.
GROSEILLIERS	244998	SCMC	2018-04-10	2019-10-07	(100) WESDOME GOLD MINES LTD.
GROSEILLIERS	243464	SCMC	2018-04-10	2019-10-07	(100) WESDOME GOLD MINES LTD.
GROSEILLIERS	247211	SCMC	2018-04-10	2018-11-03	(100) WESDOME GOLD MINES LTD.
GROSEILLIERS	246662	SCMC	2018-04-10	2018-11-03	(100) WESDOME GOLD MINES LTD.

GROSEILLIERS	248473	BCMC	2018-04-10	2018-11-03	(100) WESDOME GOLD MINES LTD.
GROSEILLIERS	249000	SCMC	2018-04-10	2019-10-07	(100) WESDOME GOLD MINES LTD.
GROSEILLIERS	248918	SCMC	2018-04-10	2019-10-07	(100) WESDOME GOLD MINES LTD.
GROSEILLIERS	249505	SCMC	2018-04-10	2019-10-07	(100) WESDOME GOLD MINES LTD.
GROSEILLIERS	251502	SCMC	2018-04-10	2018-11-03	(100) WESDOME GOLD MINES LTD.
GROSEILLIERS	254117	SCMC	2018-04-10	2019-01-06	(75) AGNICO EAGLE MINES LIMITED, (25) WESDOME GOLD MINES LTD.
GROSEILLIERS	253427	SCMC	2018-04-10	2018-11-03	(100) WESDOME GOLD MINES LTD.
GROSEILLIERS	254718	SCMC	2018-04-10	2018-11-03	(100) WESDOME GOLD MINES LTD.
GROSEILLIERS	252719	SCMC	2018-04-10	2018-11-03	(100) WESDOME GOLD MINES LTD.
GROSEILLIERS	253312	SCMC	2018-04-10	2018-11-03	(100) WESDOME GOLD MINES LTD.
GROSEILLIERS	252741	SCMC	2018-04-10	2020-01-06	(75) AGNICO EAGLE MINES LIMITED, (25) WESDOME GOLD MINES LTD.
GROSEILLIERS	254935	SCMC	2018-04-10	2019-10-07	(100) WESDOME GOLD MINES LTD.
GROSEILLIERS	254692	SCMC	2018-04-10	2019-10-29	(100) WESDOME GOLD MINES LTD.
GROSEILLIERS	264140	SCMC	2018-04-10	2019-10-07	(100) WESDOME GOLD MINES LTD.
GROSEILLIERS	272012	SCMC	2018-04-10	2018-11-03	(100) WESDOME GOLD MINES LTD.
GROSEILLIERS	271079	SCMC	2018-04-10	2019-10-07	(100) WESDOME GOLD MINES LTD.
GROSEILLIERS	273251	BCMC	2018-04-10	2019-01-06	(75) AGNICO EAGLE MINES LIMITED, (25) WESDOME GOLD MINES LTD.
GROSEILLIERS	271111	SCMC	2018-04-10	2019-10-07	(100) WESDOME GOLD MINES LTD.
GROSEILLIERS	281863	SCMC	2018-04-10	2018-11-03	(100) WESDOME GOLD MINES LTD.
GROSEILLIERS	282466	SCMC	2018-04-10	2018-11-03	(100) WESDOME GOLD MINES LTD.
GROSEILLIERS	285356	SCMC	2018-04-10	2019-10-07	(100) WESDOME GOLD MINES LTD.
GROSEILLIERS	282217	SCMC	2018-04-10	2018-11-03	(100) WESDOME GOLD MINES LTD.
GROSEILLIERS	284685	SCMC	2018-04-10	2019-09-08	(100) WESDOME GOLD MINES LTD.
GROSEILLIERS	283822	SCMC	2018-04-10	2019-10-07	(100) WESDOME GOLD MINES LTD.
GROSEILLIERS	288122	SCMC	2018-04-10	2019-10-07	(100) WESDOME GOLD MINES LTD.
GROSEILLIERS	288123	SCMC	2018-04-10	2019-10-07	(100) WESDOME GOLD MINES LTD.
GROSEILLIERS	284432	SCMC	2018-04-10	2018-11-03	(100) WESDOME GOLD MINES LTD.
GROSEILLIERS	284433	SCMC	2018-04-10	2018-11-03	(100) WESDOME GOLD MINES LTD.
GROSEILLIERS	288074	SCMC	2018-04-10	2019-07-20	(100) WESDOME GOLD MINES LTD.
GROSEILLIERS	289322	SCMC	2018-04-10	2019-07-20	(100) WESDOME GOLD MINES LTD.
GROSEILLIERS	287207	SCMC	2018-04-10	2018-11-03	(100) WESDOME GOLD MINES LTD.
GROSEILLIERS	293461	SCMC	2018-04-10	2019-10-07	(100) WESDOME GOLD MINES LTD.
GROSEILLIERS	292669	SCMC	2018-04-10	2019-10-07	(100) WESDOME GOLD MINES LTD.
GROSEILLIERS	294050	SCMC	2018-04-10	2018-11-03	(100) WESDOME GOLD MINES LTD.
GROSEILLIERS	292022	SCMC	2018-04-10	2019-10-07	(100) WESDOME GOLD MINES LTD.
GROSEILLIERS	299718	SCMC	2018-04-10	2019-10-07	(100) WESDOME GOLD MINES LTD.
GROSEILLIERS	300298	SCMC	2018-04-10	2019-10-07	(100) WESDOME GOLD MINES LTD.
GROSEILLIERS	296592	BCMC	2018-04-10	2019-01-06	(75) AGNICO EAGLE MINES LIMITED, (25) WESDOME GOLD MINES LTD.
GROSEILLIERS	296061	SCMC	2018-04-10	2019-10-07	(100) WESDOME GOLD MINES LTD.
GROSEILLIERS	300789	SCMC	2018-04-10	2019-09-08	(100) WESDOME GOLD MINES LTD.

GROSEILLIERS	304802	SCMC	2018-04-10	2019-10-07	(100) WESDOME GOLD MINES LTD.
GROSEILLIERS	304810	SCMC	2018-04-10	2018-11-03	(100) WESDOME GOLD MINES LTD.
GROSEILLIERS	303648	SCMC	2018-04-10	2018-11-03	(100) WESDOME GOLD MINES LTD.
GROSEILLIERS	304979	SCMC	2018-04-10	2019-10-07	(100) WESDOME GOLD MINES LTD.
GROSEILLIERS	312860	SCMC	2018-04-10	2019-10-07	(100) WESDOME GOLD MINES LTD.
GROSEILLIERS	313480	SCMC	2018-04-10	2018-11-03	(100) WESDOME GOLD MINES LTD.
GROSEILLIERS	310339	SCMC	2018-04-10	2018-11-03	(100) WESDOME GOLD MINES LTD.
GROSEILLIERS	315560	SCMC	2018-04-10	2018-11-03	(100) WESDOME GOLD MINES LTD.
GROSEILLIERS	318780	SCMC	2018-04-10	2019-10-29	(100) WESDOME GOLD MINES LTD.
GROSEILLIERS	315014	SCMC	2018-04-10	2019-10-07	(100) WESDOME GOLD MINES LTD.
GROSEILLIERS	321077	SCMC	2018-04-10	2018-11-03	(100) WESDOME GOLD MINES LTD.
GROSEILLIERS	317348	SCMC	2018-04-10	2018-11-03	(100) WESDOME GOLD MINES LTD.
GROSEILLIERS	317349	SCMC	2018-04-10	2018-11-03	(100) WESDOME GOLD MINES LTD.
GROSEILLIERS	321078	SCMC	2018-04-10	2018-11-03	(100) WESDOME GOLD MINES LTD.
GROSEILLIERS	321171	SCMC	2018-04-10	2018-11-03	(100) WESDOME GOLD MINES LTD.
GROSEILLIERS	325105	SCMC	2018-04-10	2018-11-03	(100) WESDOME GOLD MINES LTD.
GROSEILLIERS	325138	SCMC	2018-04-10	2019-10-07	(100) WESDOME GOLD MINES LTD.
GROSEILLIERS	321865	SCMC	2018-04-10	2019-10-07	(100) WESDOME GOLD MINES LTD.
GROSEILLIERS	323760	SCMC	2018-04-10	2019-10-07	(100) WESDOME GOLD MINES LTD.
GROSEILLIERS	329226	SCMC	2018-04-10	2018-11-03	(100) WESDOME GOLD MINES LTD.
GROSEILLIERS	335055	SCMC	2018-04-10	2018-11-03	(100) WESDOME GOLD MINES LTD.
GROSEILLIERS	336419	SCMC	2018-04-10	2018-11-03	(100) WESDOME GOLD MINES LTD.
GROSEILLIERS	336867	SCMC	2018-04-10	2019-01-06	(75) AGNICO EAGLE MINES LIMITED, (25) WESDOME GOLD MINES LTD.
GROSEILLIERS	336868	SCMC	2018-04-10	2019-01-06	(75) AGNICO EAGLE MINES LIMITED, (25) WESDOME GOLD MINES LTD.
GROSEILLIERS	330353	SCMC	2018-04-10	2018-11-03	(100) WESDOME GOLD MINES LTD.
GROSEILLIERS	340912	SCMC	2018-04-10	2018-11-03	(100) WESDOME GOLD MINES LTD.
GROSEILLIERS	343051	SCMC	2018-04-10	2019-10-07	(100) WESDOME GOLD MINES LTD.
GROSEILLIERS	334489	SCMC	2018-04-10	2018-11-03	(100) WESDOME GOLD MINES LTD.
GROSEILLIERS	331100	SCMC	2018-04-10	2019-10-07	(100) WESDOME GOLD MINES LTD.
MISHIBISHU LAKE AREA	334552	SCMC	2018-04-10	2019-08-06	(100) WESDOME GOLD MINES LTD.
MISHIBISHU LAKE AREA	105292	SCMC	2018-04-10	2018-11-02	(100) WESDOME GOLD MINES LTD.
MISHIBISHU LAKE AREA	108131	SCMC	2018-04-10	2019-02-10	(100) WESDOME GOLD MINES LTD.
MISHIBISHU LAKE AREA	113287	SCMC	2018-04-10	2019-08-06	(100) WESDOME GOLD MINES LTD.
MISHIBISHU LAKE AREA	119594	BCMC	2018-04-10	2019-04-29	(100) WESDOME GOLD MINES LTD.
MISHIBISHU LAKE AREA	119768	SCMC	2018-04-10	2019-04-29	(100) WESDOME GOLD MINES LTD.
MISHIBISHU LAKE AREA	129932	SCMC	2018-04-10	2019-04-29	(100) WESDOME GOLD MINES LTD.
MISHIBISHU LAKE AREA	129062	BCMC	2018-04-10	2019-04-29	(100) WESDOME GOLD MINES LTD.
MISHIBISHU LAKE AREA	134408	SCMC	2018-04-10	2019-04-29	(100) WESDOME GOLD MINES LTD.
MISHIBISHU LAKE AREA	143569	SCMC	2018-04-10	2019-04-29	(100) WESDOME GOLD MINES LTD.

MISHIBISHU LAKE AREA	145751	SCMC	2018-04-10	2018-11-02	(100) WESDOME GOLD MINES LTD.
MISHIBISHU LAKE AREA	148771	SCMC	2018-04-10	2019-08-06	(100) WESDOME GOLD MINES LTD.
MISHIBISHU LAKE AREA	159869	SCMC	2018-04-10	2018-11-02	(100) WESDOME GOLD MINES LTD.
MISHIBISHU LAKE AREA	172741	SCMC	2018-04-10	2019-08-06	(100) WESDOME GOLD MINES LTD.
MISHIBISHU LAKE AREA	174068	SCMC	2018-04-10	2018-11-02	(100) WESDOME GOLD MINES LTD.
MISHIBISHU LAKE AREA	183522	SCMC	2018-04-10	2019-08-06	(100) WESDOME GOLD MINES LTD.
MISHIBISHU LAKE AREA	191401	SCMC	2018-04-10	2018-11-02	(100) WESDOME GOLD MINES LTD.
MISHIBISHU LAKE AREA	218060	SCMC	2018-04-10	2019-08-06	(100) WESDOME GOLD MINES LTD.
MISHIBISHU LAKE AREA	221188	SCMC	2018-04-10	2018-11-02	(100) WESDOME GOLD MINES LTD.
MISHIBISHU LAKE AREA	238615	SCMC	2018-04-10	2019-08-06	(100) WESDOME GOLD MINES LTD.
MISHIBISHU LAKE AREA	241238	SCMC	2018-04-10	2018-11-19	(100) WESDOME GOLD MINES LTD.
MISHIBISHU LAKE AREA	254146	SCMC	2018-04-10	2018-11-02	(100) WESDOME GOLD MINES LTD.
MISHIBISHU LAKE AREA	270841	SCMC	2018-04-10	2018-11-02	(100) WESDOME GOLD MINES LTD.
MISHIBISHU LAKE AREA	277003	BCMC	2018-04-10	2019-04-29	(100) WESDOME GOLD MINES LTD.
MISHIBISHU LAKE AREA	287222	SCMC	2018-04-10	2018-11-02	(100) WESDOME GOLD MINES LTD.
MISHIBISHU LAKE AREA	292585	SCMC	2018-04-10	2018-11-02	(100) WESDOME GOLD MINES LTD.
MISHIBISHU LAKE AREA	305249	SCMC	2018-04-10	2018-11-02	(100) WESDOME GOLD MINES LTD.
MISHIBISHU LAKE AREA	309803	SCMC	2018-04-10	2018-11-02	(100) WESDOME GOLD MINES LTD.
MISHIBISHU LAKE AREA	324387	SCMC	2018-04-10	2018-11-19	(100) WESDOME GOLD MINES LTD.
MISHIBISHU LAKE AREA	337616	SCMC	2018-04-10	2019-04-29	(100) WESDOME GOLD MINES LTD.
MISHIBISHU LAKE AREA	332683	SCMC	2018-04-10	2019-08-06	(100) WESDOME GOLD MINES LTD.
PILOT HARBOUR AREA	129938	SCMC	2018-04-10	2019-08-27	(100) WESDOME GOLD MINES LTD.
PILOT HARBOUR AREA	133082	SCMC	2018-04-10	2019-08-27	(100) WESDOME GOLD MINES LTD.
PILOT HARBOUR AREA	134831	SCMC	2018-04-10	2019-08-06	(100) WESDOME GOLD MINES LTD.
PILOT HARBOUR AREA	137342	SCMC	2018-04-10	2019-08-27	(100) WESDOME GOLD MINES LTD.
PILOT HARBOUR AREA	149175	SCMC	2018-04-10	2019-08-27	(100) WESDOME GOLD MINES LTD.
PILOT HARBOUR AREA	176078	SCMC	2018-04-10	2019-04-16	(100) WESDOME GOLD MINES LTD.
PILOT HARBOUR AREA	181660	SCMC	2018-04-10	2019-08-06	(100) WESDOME GOLD MINES LTD.
PILOT HARBOUR AREA	183326	SCMC	2018-04-10	2019-08-27	(100) WESDOME GOLD MINES LTD.
PILOT HARBOUR AREA	183327	SCMC	2018-04-10	2019-08-27	(100) WESDOME GOLD MINES LTD.
PILOT HARBOUR AREA	222649	SCMC	2018-04-10	2019-04-16	(100) WESDOME GOLD MINES LTD.
PILOT HARBOUR AREA	242811	SCMC	2018-04-10	2019-04-16	(100) WESDOME GOLD MINES LTD.
PILOT HARBOUR AREA	250832	SCMC	2018-04-10	2019-08-06	(100) WESDOME GOLD MINES LTD.
PILOT HARBOUR AREA	253018	SCMC	2018-04-10	2019-08-06	(100) WESDOME GOLD MINES LTD.

PILOT HARBOUR AREA	264523	SCMC	2018-04-10	2019-08-27	(100) WESDOME GOLD MINES LTD.
PILOT HARBOUR AREA	278684	SCMC	2018-04-10	2019-08-27	(100) WESDOME GOLD MINES LTD.
PILOT HARBOUR AREA	301565	SCMC	2018-04-10	2019-08-06	(100) WESDOME GOLD MINES LTD.
PILOT HARBOUR AREA	301149	SCMC	2018-04-10	2019-08-27	(100) WESDOME GOLD MINES LTD.
PILOT HARBOUR AREA	302821	SCMC	2018-04-10	2019-08-06	(100) WESDOME GOLD MINES LTD.
PILOT HARBOUR AREA	309061	SCMC	2018-04-10	2019-08-06	(100) WESDOME GOLD MINES LTD.
PILOT HARBOUR AREA	321893	SCMC	2018-04-10	2019-08-27	(100) WESDOME GOLD MINES LTD.
PILOT HARBOUR AREA	329918	SCMC	2018-04-10	2019-08-27	(100) WESDOME GOLD MINES LTD.
PILOT HARBOUR AREA	339301	SCMC	2018-04-10	2019-08-27	(100) WESDOME GOLD MINES LTD.
POINT ISACOR AREA	338076	SCMC	2018-04-10	2018-11-19	(100) WESDOME GOLD MINES LTD.
POINT ISACOR AREA	340493	SCMC	2018-04-10	2019-09-18	(100) WESDOME GOLD MINES LTD.
POINT ISACOR AREA	104422	BCMC	2018-04-10	2020-04-27	(100) WESDOME GOLD MINES LTD.
POINT ISACOR AREA	106813	SCMC	2018-04-10	2019-09-18	(100) WESDOME GOLD MINES LTD.
POINT ISACOR AREA	104259	SCMC	2018-04-10	2018-11-19	(100) WESDOME GOLD MINES LTD.
POINT ISACOR AREA	105303	SCMC	2018-04-10	2019-07-20	(100) WESDOME GOLD MINES LTD.
POINT ISACOR AREA	105883	SCMC	2018-04-10	2019-07-20	(100) WESDOME GOLD MINES LTD.
POINT ISACOR AREA	107991	SCMC	2018-04-10	2021-02-15	(100) WESDOME GOLD MINES LTD.
POINT ISACOR AREA	107469	SCMC	2018-04-10	2019-08-06	(100) WESDOME GOLD MINES LTD.
POINT ISACOR AREA	106016	SCMC	2018-04-10	2021-02-15	(100) WESDOME GOLD MINES LTD.
POINT ISACOR AREA	104874	SCMC	2018-04-10	2020-08-11	(100) WESDOME GOLD MINES LTD.
POINT ISACOR AREA	107126	SCMC	2018-04-10	2019-07-20	(100) WESDOME GOLD MINES LTD.
POINT ISACOR AREA	107127	SCMC	2018-04-10	2019-09-18	(100) WESDOME GOLD MINES LTD.
POINT ISACOR AREA	107201	SCMC	2018-04-10	2019-04-29	(100) WESDOME GOLD MINES LTD.
POINT ISACOR AREA	111002	SCMC	2018-04-10	2019-07-20	(100) WESDOME GOLD MINES LTD.
POINT ISACOR AREA	113953	SCMC	2018-04-10	2019-07-20	(100) WESDOME GOLD MINES LTD.
POINT ISACOR AREA	113954	SCMC	2018-04-10	2018-11-19	(100) WESDOME GOLD MINES LTD.
POINT ISACOR AREA	119695	BCMC	2018-04-10	2020-04-27	(100) WESDOME GOLD MINES LTD.
POINT ISACOR AREA	120736	SCMC	2018-04-10	2019-07-20	(100) WESDOME GOLD MINES LTD.
POINT ISACOR AREA	118757	BCMC	2018-04-10	2019-10-20	(100) WESDOME GOLD MINES LTD.
POINT ISACOR AREA	122749	SCMC	2018-04-10	2019-07-20	(100) WESDOME GOLD MINES LTD.
POINT ISACOR AREA	124647	SCMC	2018-04-10	2019-07-20	(100) WESDOME GOLD MINES LTD.
POINT ISACOR AREA	124668	SCMC	2018-04-10	2019-10-29	(100) WESDOME GOLD MINES LTD.
POINT ISACOR AREA	121519	SCMC	2018-04-10	2019-04-29	(100) WESDOME GOLD MINES LTD.
POINT ISACOR AREA	126644	SCMC	2018-04-10	2019-07-20	(100) WESDOME GOLD MINES LTD.

POINT ISACOR AREA	126645	SCMC	2018-04-10	2019-07-20	(100) WESDOME GOLD MINES LTD.
POINT ISACOR AREA	127502	SCMC	2018-04-10	2019-09-08	(100) WESDOME GOLD MINES LTD.
POINT ISACOR AREA	127507	SCMC	2018-04-10	2019-09-08	(100) WESDOME GOLD MINES LTD.
POINT ISACOR AREA	126096	SCMC	2018-04-10	2019-07-20	(100) WESDOME GOLD MINES LTD.
POINT ISACOR AREA	123919	SCMC	2018-04-10	2019-09-08	(100) WESDOME GOLD MINES LTD.
POINT ISACOR AREA	127796	SCMC	2018-04-10	2018-11-19	(100) WESDOME GOLD MINES LTD.
POINT ISACOR AREA	127921	SCMC	2018-04-10	2019-07-20	(100) WESDOME GOLD MINES LTD.
POINT ISACOR AREA	129082	BCMC	2018-04-10	2020-04-27	(100) WESDOME GOLD MINES LTD.
POINT ISACOR AREA	132137	SCMC	2018-04-10	2019-07-20	(100) WESDOME GOLD MINES LTD.
POINT ISACOR AREA	129962	SCMC	2018-04-10	2019-04-29	(100) WESDOME GOLD MINES LTD.
POINT ISACOR AREA	128531	SCMC	2018-04-10	2021-02-15	(100) WESDOME GOLD MINES LTD.
POINT ISACOR AREA	130976	SCMC	2018-04-10	2019-04-29	(100) WESDOME GOLD MINES LTD.
POINT ISACOR AREA	130924	SCMC	2018-04-10	2019-09-18	(100) WESDOME GOLD MINES LTD.
POINT ISACOR AREA	130811	SCMC	2018-04-10	2019-04-29	(100) WESDOME GOLD MINES LTD.
POINT ISACOR AREA	133986	SCMC	2018-04-10	2018-11-19	(100) WESDOME GOLD MINES LTD.
POINT ISACOR AREA	130841	SCMC	2018-04-10	2019-04-29	(100) WESDOME GOLD MINES LTD.
POINT ISACOR AREA	130842	SCMC	2018-04-10	2019-04-29	(100) WESDOME GOLD MINES LTD.
POINT ISACOR AREA	130199	SCMC	2018-04-10	2019-04-29	(100) WESDOME GOLD MINES LTD.
POINT ISACOR AREA	137557	SCMC	2018-04-10	2019-09-18	(100) WESDOME GOLD MINES LTD.
POINT ISACOR AREA	137558	SCMC	2018-04-10	2019-09-08	(100) WESDOME GOLD MINES LTD.
POINT ISACOR AREA	136043	SCMC	2018-04-10	2019-04-29	(100) WESDOME GOLD MINES LTD.
POINT ISACOR AREA	136044	SCMC	2018-04-10	2019-04-29	(100) WESDOME GOLD MINES LTD.
POINT ISACOR AREA	137961	SCMC	2018-04-10	2019-07-20	(100) WESDOME GOLD MINES LTD.
POINT ISACOR AREA	135978	SCMC	2018-04-10	2019-08-06	(100) WESDOME GOLD MINES LTD.
POINT ISACOR AREA	137715	SCMC	2018-04-10	2019-07-20	(100) WESDOME GOLD MINES LTD.
POINT ISACOR AREA	140476	SCMC	2018-04-10	2019-07-20	(100) WESDOME GOLD MINES LTD.
POINT ISACOR AREA	137169	SCMC	2018-04-10	2021-02-15	(100) WESDOME GOLD MINES LTD.
POINT ISACOR AREA	139555	SCMC	2018-04-10	2019-09-08	(100) WESDOME GOLD MINES LTD.
POINT ISACOR AREA	139308	SCMC	2018-04-10	2019-04-29	(100) WESDOME GOLD MINES LTD.
POINT ISACOR AREA	139994	SCMC	2018-04-10	2019-08-06	(100) WESDOME GOLD MINES LTD.
POINT ISACOR AREA	140007	SCMC	2018-04-10	2019-07-20	(100) WESDOME GOLD MINES LTD.
POINT ISACOR AREA	145746	SCMC	2018-04-10	2019-09-18	(100) WESDOME GOLD MINES LTD.
POINT ISACOR AREA	145747	SCMC	2018-04-10	2019-09-18	(100) WESDOME GOLD MINES LTD.
POINT ISACOR AREA	147873	SCMC	2018-04-10	2019-09-08	(100) WESDOME GOLD MINES LTD.

POINT ISACOR AREA	150701	SCMC	2018-04-10	2021-02-15	(100) WESDOME GOLD MINES LTD.
POINT ISACOR AREA	152199	SCMC	2018-04-10	2019-07-20	(100) WESDOME GOLD MINES LTD.
POINT ISACOR AREA	152492	SCMC	2018-04-10	2019-09-08	(100) WESDOME GOLD MINES LTD.
POINT ISACOR AREA	151813	SCMC	2018-04-10	2019-09-08	(100) WESDOME GOLD MINES LTD.
POINT ISACOR AREA	151847	SCMC	2018-04-10	2019-07-20	(100) WESDOME GOLD MINES LTD.
POINT ISACOR AREA	154539	SCMC	2018-04-10	2019-08-06	(100) WESDOME GOLD MINES LTD.
POINT ISACOR AREA	156720	SCMC	2018-04-10	2020-08-11	(100) WESDOME GOLD MINES LTD.
POINT ISACOR AREA	155871	SCMC	2018-04-10	2019-08-06	(100) WESDOME GOLD MINES LTD.
POINT ISACOR AREA	160525	SCMC	2018-04-10	2019-07-20	(100) WESDOME GOLD MINES LTD.
POINT ISACOR AREA	162529	SCMC	2018-04-10	2019-07-20	(100) WESDOME GOLD MINES LTD.
POINT ISACOR AREA	165276	SCMC	2018-04-10	2019-09-18	(100) WESDOME GOLD MINES LTD.
POINT ISACOR AREA	165277	SCMC	2018-04-10	2019-09-18	(100) WESDOME GOLD MINES LTD.
POINT ISACOR AREA	167042	SCMC	2018-04-10	2019-10-20	(100) WESDOME GOLD MINES LTD.
POINT ISACOR AREA	166591	SCMC	2018-04-10	2019-09-08	(100) WESDOME GOLD MINES LTD.
POINT ISACOR AREA	169399	SCMC	2018-04-10	2019-07-20	(100) WESDOME GOLD MINES LTD.
POINT ISACOR AREA	171304	SCMC	2018-04-10	2019-07-20	(100) WESDOME GOLD MINES LTD.
POINT ISACOR AREA	169864	SCMC	2018-04-10	2019-08-06	(100) WESDOME GOLD MINES LTD.
POINT ISACOR AREA	169865	SCMC	2018-04-10	2019-04-29	(100) WESDOME GOLD MINES LTD.
POINT ISACOR AREA	172412	SCMC	2018-04-10	2019-07-20	(100) WESDOME GOLD MINES LTD.
POINT ISACOR AREA	172448	SCMC	2018-04-10	2019-09-08	(100) WESDOME GOLD MINES LTD.
POINT ISACOR AREA	173314	SCMC	2018-04-10	2019-07-20	(100) WESDOME GOLD MINES LTD.
POINT ISACOR AREA	173315	SCMC	2018-04-10	2019-07-20	(100) WESDOME GOLD MINES LTD.
POINT ISACOR AREA	173332	SCMC	2018-04-10	2019-07-20	(100) WESDOME GOLD MINES LTD.
POINT ISACOR AREA	173333	SCMC	2018-04-10	2019-07-20	(100) WESDOME GOLD MINES LTD.
POINT ISACOR AREA	174686	SCMC	2018-04-10	2020-08-11	(100) WESDOME GOLD MINES LTD.
POINT ISACOR AREA	174169	SCMC	2018-04-10	2018-11-19	(100) WESDOME GOLD MINES LTD.
POINT ISACOR AREA	176791	SCMC	2018-04-10	2019-04-29	(100) WESDOME GOLD MINES LTD.
POINT ISACOR AREA	180034	SCMC	2018-04-10	2019-07-20	(100) WESDOME GOLD MINES LTD.
POINT ISACOR AREA	184277	SCMC	2018-04-10	2019-07-20	(100) WESDOME GOLD MINES LTD.
POINT ISACOR AREA	183330	SCMC	2018-04-10	2019-04-29	(100) WESDOME GOLD MINES LTD.
POINT ISACOR AREA	185426	SCMC	2018-04-10	2019-07-20	(100) WESDOME GOLD MINES LTD.
POINT ISACOR AREA	186142	SCMC	2018-04-10	2019-09-08	(100) WESDOME GOLD MINES LTD.
POINT ISACOR AREA	189552	SCMC	2018-04-10	2019-09-08	(100) WESDOME GOLD MINES LTD.
POINT ISACOR AREA	189555	SCMC	2018-04-10	2019-04-29	(100) WESDOME GOLD MINES LTD.

POINT ISACOR AREA	188766	SCMC	2018-04-10	2019-07-20	(100) WESDOME GOLD MINES LTD.
POINT ISACOR AREA	188065	SCMC	2018-04-10	2019-09-08	(100) WESDOME GOLD MINES LTD.
POINT ISACOR AREA	187931	SCMC	2018-04-10	2019-09-08	(100) WESDOME GOLD MINES LTD.
POINT ISACOR AREA	190353	SCMC	2018-04-10	2019-07-20	(100) WESDOME GOLD MINES LTD.
POINT ISACOR AREA	192137	SCMC	2018-04-10	2020-08-11	(100) WESDOME GOLD MINES LTD.
POINT ISACOR AREA	192494	SCMC	2018-04-10	2020-04-27	(100) WESDOME GOLD MINES LTD.
POINT ISACOR AREA	197931	SCMC	2018-04-10	2019-07-20	(100) WESDOME GOLD MINES LTD.
POINT ISACOR AREA	200986	SCMC	2018-04-10	2019-09-18	(100) WESDOME GOLD MINES LTD.
POINT ISACOR AREA	205542	SCMC	2018-04-10	2021-02-15	(100) WESDOME GOLD MINES LTD.
POINT ISACOR AREA	210389	SCMC	2018-04-10	2020-08-11	(100) WESDOME GOLD MINES LTD.
POINT ISACOR AREA	210307	SCMC	2018-04-10	2019-09-08	(100) WESDOME GOLD MINES LTD.
POINT ISACOR AREA	217271	SCMC	2018-04-10	2019-07-20	(100) WESDOME GOLD MINES LTD.
POINT ISACOR AREA	215131	SCMC	2018-04-10	2018-11-19	(100) WESDOME GOLD MINES LTD.
POINT ISACOR AREA	214279	SCMC	2018-04-10	2018-11-19	(100) WESDOME GOLD MINES LTD.
POINT ISACOR AREA	215815	SCMC	2018-04-10	2019-10-20	(100) WESDOME GOLD MINES LTD.
POINT ISACOR AREA	217591	SCMC	2018-04-10	2018-11-03	(100) WESDOME GOLD MINES LTD.
POINT ISACOR AREA	218540	SCMC	2018-04-10	2019-07-20	(100) WESDOME GOLD MINES LTD.
POINT ISACOR AREA	222475	SCMC	2018-04-10	2020-02-10	(100) WESDOME GOLD MINES LTD.
POINT ISACOR AREA	223989	SCMC	2018-04-10	2019-07-20	(100) WESDOME GOLD MINES LTD.
POINT ISACOR AREA	222402	SCMC	2018-04-10	2020-04-27	(100) WESDOME GOLD MINES LTD.
POINT ISACOR AREA	225862	SCMC	2018-04-10	2019-09-08	(100) WESDOME GOLD MINES LTD.
POINT ISACOR AREA	226006	SCMC	2018-04-10	2019-09-08	(100) WESDOME GOLD MINES LTD.
POINT ISACOR AREA	228541	SCMC	2018-04-10	2019-09-08	(100) WESDOME GOLD MINES LTD.
POINT ISACOR AREA	227405	SCMC	2018-04-10	2019-08-06	(100) WESDOME GOLD MINES LTD.
POINT ISACOR AREA	228580	SCMC	2018-04-10	2019-07-20	(100) WESDOME GOLD MINES LTD.
POINT ISACOR AREA	227282	SCMC	2018-04-10	2019-07-20	(100) WESDOME GOLD MINES LTD.
POINT ISACOR AREA	229851	SCMC	2018-04-10	2020-04-27	(100) WESDOME GOLD MINES LTD.
POINT ISACOR AREA	229298	SCMC	2018-04-10	2019-07-20	(100) WESDOME GOLD MINES LTD.
POINT ISACOR AREA	229081	SCMC	2018-04-10	2018-11-19	(100) WESDOME GOLD MINES LTD.
POINT ISACOR AREA	232409	SCMC	2018-04-10	2020-11-24	(100) WESDOME GOLD MINES LTD.
POINT ISACOR AREA	234598	SCMC	2018-04-10	2019-07-20	(100) WESDOME GOLD MINES LTD.
POINT ISACOR AREA	238050	SCMC	2018-04-10	2018-11-03	(100) WESDOME GOLD MINES LTD.
POINT ISACOR AREA	235358	SCMC	2018-04-10	2019-09-08	(100) WESDOME GOLD MINES LTD.
POINT ISACOR AREA	234807	SCMC	2018-04-10	2018-11-19	(100) WESDOME GOLD MINES LTD.



POINT ISACOR AREA	238026	SCMC	2018-04-10	2019-07-20	(100) WESDOME GOLD MINES LTD.
POINT ISACOR AREA	237325	SCMC	2018-04-10	2019-09-08	(100) WESDOME GOLD MINES LTD.
POINT ISACOR AREA	236035	SCMC	2018-04-10	2019-07-20	(100) WESDOME GOLD MINES LTD.
POINT ISACOR AREA	237561	SCMC	2018-04-10	2021-02-15	(100) WESDOME GOLD MINES LTD.
POINT ISACOR AREA	238233	SCMC	2018-04-10	2019-07-20	(100) WESDOME GOLD MINES LTD.
POINT ISACOR AREA	238972	SCMC	2018-04-10	2019-07-20	(100) WESDOME GOLD MINES LTD.
POINT ISACOR AREA	241949	SCMC	2018-04-10	2019-04-29	(100) WESDOME GOLD MINES LTD.
POINT ISACOR AREA	241249	SCMC	2018-04-10	2020-11-24	(100) WESDOME GOLD MINES LTD.
POINT ISACOR AREA	241861	SCMC	2018-04-10	2019-10-20	(100) WESDOME GOLD MINES LTD.
POINT ISACOR AREA	241593	SCMC	2018-04-10	2019-07-20	(100) WESDOME GOLD MINES LTD.
POINT ISACOR AREA	242768	SCMC	2018-04-10	2019-07-20	(100) WESDOME GOLD MINES LTD.
POINT ISACOR AREA	243530	SCMC	2018-04-10	2019-07-20	(100) WESDOME GOLD MINES LTD.
POINT ISACOR AREA	244686	SCMC	2018-04-10	2019-07-20	(100) WESDOME GOLD MINES LTD.
POINT ISACOR AREA	244018	SCMC	2018-04-10	2019-04-29	(100) WESDOME GOLD MINES LTD.
POINT ISACOR AREA	244019	SCMC	2018-04-10	2021-02-15	(100) WESDOME GOLD MINES LTD.
POINT ISACOR AREA	244307	SCMC	2018-04-10	2019-07-20	(100) WESDOME GOLD MINES LTD.
POINT ISACOR AREA	246101	SCMC	2018-04-10	2019-09-08	(100) WESDOME GOLD MINES LTD.
POINT ISACOR AREA	247164	SCMC	2018-04-10	2019-07-20	(100) WESDOME GOLD MINES LTD.
POINT ISACOR AREA	245433	SCMC	2018-04-10	2019-07-20	(100) WESDOME GOLD MINES LTD.
POINT ISACOR AREA	246524	BCMC	2018-04-10	2019-10-20	(100) WESDOME GOLD MINES LTD.
POINT ISACOR AREA	248754	SCMC	2018-04-10	2019-07-20	(100) WESDOME GOLD MINES LTD.
POINT ISACOR AREA	247529	SCMC	2018-04-10	2019-07-20	(100) WESDOME GOLD MINES LTD.
POINT ISACOR AREA	251471	SCMC	2018-04-10	2019-07-20	(100) WESDOME GOLD MINES LTD.
POINT ISACOR AREA	250869	SCMC	2018-04-10	2019-09-18	(100) WESDOME GOLD MINES LTD.
POINT ISACOR AREA	252126	SCMC	2018-04-10	2019-07-20	(100) WESDOME GOLD MINES LTD.
POINT ISACOR AREA	252127	SCMC	2018-04-10	2019-07-20	(100) WESDOME GOLD MINES LTD.
POINT ISACOR AREA	254735	SCMC	2018-04-10	2019-09-08	(100) WESDOME GOLD MINES LTD.
POINT ISACOR AREA	261788	SCMC	2018-04-10	2020-11-24	(100) WESDOME GOLD MINES LTD.
POINT ISACOR AREA	264100	SCMC	2018-04-10	2019-07-20	(100) WESDOME GOLD MINES LTD.
POINT ISACOR AREA	264388	SCMC	2018-04-10	2019-08-06	(100) WESDOME GOLD MINES LTD.
POINT ISACOR AREA	271751	BCMC	2018-04-10	2019-10-20	(100) WESDOME GOLD MINES LTD.
POINT ISACOR AREA	276312	SCMC	2018-04-10	2019-10-20	(100) WESDOME GOLD MINES LTD.
POINT ISACOR AREA	281898	SCMC	2018-04-10	2019-09-08	(100) WESDOME GOLD MINES LTD.
POINT ISACOR AREA	281835	SCMC	2018-04-10	2019-10-20	(100) WESDOME GOLD MINES LTD.

POINT ISACOR AREA	278681	SCMC	2018-04-10	2019-04-29	(100) WESDOME GOLD MINES LTD.
POINT ISACOR AREA	281278	SCMC	2018-04-10	2019-07-20	(100) WESDOME GOLD MINES LTD.
POINT ISACOR AREA	278574	SCMC	2018-04-10	2019-09-08	(100) WESDOME GOLD MINES LTD.
POINT ISACOR AREA	278704	SCMC	2018-04-10	2019-04-29	(100) WESDOME GOLD MINES LTD.
POINT ISACOR AREA	279898	SCMC	2018-04-10	2019-09-18	(100) WESDOME GOLD MINES LTD.
POINT ISACOR AREA	281952	SCMC	2018-04-10	2019-09-08	(100) WESDOME GOLD MINES LTD.
POINT ISACOR AREA	282620	SCMC	2018-04-10	2019-07-20	(100) WESDOME GOLD MINES LTD.
POINT ISACOR AREA	283749	SCMC	2018-04-10	2019-07-20	(100) WESDOME GOLD MINES LTD.
POINT ISACOR AREA	288719	SCMC	2018-04-10	2019-07-20	(100) WESDOME GOLD MINES LTD.
POINT ISACOR AREA	287162	SCMC	2018-04-10	2019-04-29	(100) WESDOME GOLD MINES LTD.
POINT ISACOR AREA	287834	SCMC	2018-04-10	2021-02-15	(100) WESDOME GOLD MINES LTD.
POINT ISACOR AREA	287862	SCMC	2018-04-10	2019-07-20	(100) WESDOME GOLD MINES LTD.
POINT ISACOR AREA	290094	SCMC	2018-04-10	2019-07-20	(100) WESDOME GOLD MINES LTD.
POINT ISACOR AREA	293397	SCMC	2018-04-10	2019-02-10	(100) WESDOME GOLD MINES LTD.
POINT ISACOR AREA	293270	SCMC	2018-04-10	2019-04-29	(100) WESDOME GOLD MINES LTD.
POINT ISACOR AREA	291304	SCMC	2018-04-10	2019-07-20	(100) WESDOME GOLD MINES LTD.
POINT ISACOR AREA	291853	SCMC	2018-04-10	2019-08-06	(100) WESDOME GOLD MINES LTD.
POINT ISACOR AREA	296378	SCMC	2018-04-10	2019-04-29	(100) WESDOME GOLD MINES LTD.
POINT ISACOR AREA	294798	SCMC	2018-04-10	2021-02-15	(100) WESDOME GOLD MINES LTD.
POINT ISACOR AREA	297336	SCMC	2018-04-10	2019-09-18	(100) WESDOME GOLD MINES LTD.
POINT ISACOR AREA	297923	SCMC	2018-04-10	2019-07-20	(100) WESDOME GOLD MINES LTD.
POINT ISACOR AREA	300241	SCMC	2018-04-10	2019-10-29	(100) WESDOME GOLD MINES LTD.
POINT ISACOR AREA	300126	SCMC	2018-04-10	2019-04-29	(100) WESDOME GOLD MINES LTD.
POINT ISACOR AREA	302239	SCMC	2018-04-10	2020-02-10	(100) WESDOME GOLD MINES LTD.
POINT ISACOR AREA	303465	SCMC	2018-04-10	2019-07-20	(100) WESDOME GOLD MINES LTD.
POINT ISACOR AREA	303532	SCMC	2018-04-10	2019-07-20	(100) WESDOME GOLD MINES LTD.
POINT ISACOR AREA	304675	SCMC	2018-04-10	2019-07-20	(100) WESDOME GOLD MINES LTD.
POINT ISACOR AREA	305398	SCMC	2018-04-10	2019-08-06	(100) WESDOME GOLD MINES LTD.
POINT ISACOR AREA	307332	SCMC	2018-04-10	2019-09-08	(100) WESDOME GOLD MINES LTD.
POINT ISACOR AREA	310828	SCMC	2018-04-10	2019-09-08	(100) WESDOME GOLD MINES LTD.
POINT ISACOR AREA	310266	SCMC	2018-04-10	2019-04-29	(100) WESDOME GOLD MINES LTD.
POINT ISACOR AREA	312861	SCMC	2018-04-10	2019-07-20	(100) WESDOME GOLD MINES LTD.
POINT ISACOR AREA	316124	SCMC	2018-04-10	2019-07-20	(100) WESDOME GOLD MINES LTD.
POINT ISACOR AREA	316125	SCMC	2018-04-10	2019-07-20	(100) WESDOME GOLD MINES LTD.

POINT ISACOR AREA	319360	SCMC	2018-04-10	2020-02-10	(100) WESDOME GOLD MINES LTD.
POINT ISACOR AREA	319104	SCMC	2018-04-10	2020-02-10	(100) WESDOME GOLD MINES LTD.
POINT ISACOR AREA	321152	SCMC	2018-04-10	2019-07-20	(100) WESDOME GOLD MINES LTD.
POINT ISACOR AREA	325225	SCMC	2018-04-10	2020-08-11	(100) WESDOME GOLD MINES LTD.
POINT ISACOR AREA	325644	SCMC	2018-04-10	2020-04-27	(100) WESDOME GOLD MINES LTD.
POINT ISACOR AREA	325708	SCMC	2018-04-10	2018-11-19	(100) WESDOME GOLD MINES LTD.
POINT ISACOR AREA	325000	SCMC	2018-04-10	2018-11-19	(100) WESDOME GOLD MINES LTD.
POINT ISACOR AREA	325628	BCMC	2018-04-10	2019-04-29	(100) WESDOME GOLD MINES LTD.
POINT ISACOR AREA	323743	SCMC	2018-04-10	2019-07-20	(100) WESDOME GOLD MINES LTD.
POINT ISACOR AREA	331548	SCMC	2018-04-10	2019-07-20	(100) WESDOME GOLD MINES LTD.
POINT ISACOR AREA	344186	SCMC	2018-04-10	2019-09-08	(100) WESDOME GOLD MINES LTD.
POINT ISACOR AREA	340304	SCMC	2018-04-10	2019-09-18	(100) WESDOME GOLD MINES LTD.
POINT ISACOR AREA	339740	SCMC	2018-04-10	2019-07-20	(100) WESDOME GOLD MINES LTD.
POINT ISACOR AREA	340901	SCMC	2018-04-10	2019-09-08	(100) WESDOME GOLD MINES LTD.
POINT ISACOR AREA	341388	SCMC	2018-04-10	2019-10-20	(100) WESDOME GOLD MINES LTD.

Table 2 - Mining Tenures

Tenure Number	Title	Disposition	Rights	Area (ha)
LEA-108945	Lease	MSR	Mining and Surface Rights	368.292
LEA-107273	Lease	MSR	Mining and Surface Rights	158.834
LEA-108946	Lease	MSR	Mining and Surface Rights	358.895

## 1.2 Location, Access and Infrastructure

The area covered by the 2016 drill program on the Eagle River Mine property (Projects 100 and 105) is entirely located in Isacor Township within NTS Map sheets 41 N/14.

The property is located 50 km west of Wawa, Ontario in an area where topography is rough and lakes and streams are abundant. As a result, access to the mine follows 120 km-long route along paved and gravelled roads. From Wawa, the TransCanada Highway (No.17) is followed northward over a distance of 50 km to the intersection of the Paint Lake Road. This well-maintained gravel road is then followed southwestward over a distance of about 50 km to the Mishi mine's mill-bunkhouse-office complex.

The Project 100-105 area is reached by continuing another 20 km southwestward on the Paint Lake Road. All drill sites are located within 500 m and a short walking distance of existing mine infrastructures and its network of well-maintained gravel roads.

Operations were based at the Mishi mine's mill-bunkhouse-office complex where lodging, meals and logistical support were made available to the exploration department and drill contractor.

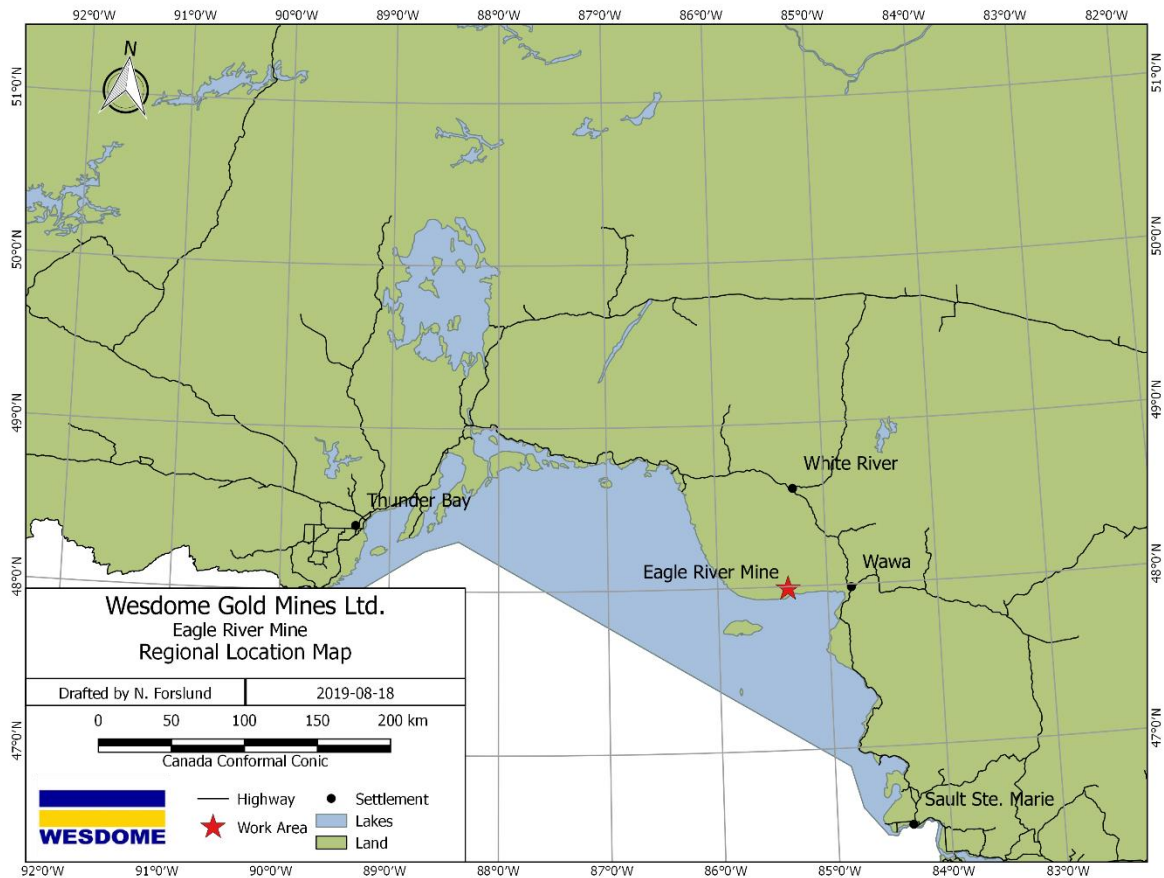


Figure 1- Provincial Location Map

An office to direct exploration efforts was located next to the core shack in the Eagle River mine's administrative office complex. All logging and sawing of projects 100 and 105 drill core was completed at this core shack. Core was then moved to nearby core racks for long-term storage.

The terrain on the Eagle River Mine and immediate surroundings is very rugged, marked by rocky often steep hills, intercalated by wet very soft cedar-covered valleys. With the exception of a few locations, this terrain is not amenable to small all-terrain vehicles and as a result all drill sites were reached either by a leased pick-up truck or on foot.

To insure their safety and efficiency, Wesdome field crews, drill crews and their foremen were equipped with portable radios and radio units were installed in the two Exploration Department pick-up trucks. This radio network provided reliable communications with the mine and exploration offices, core shacks, security personnel and Wawa office.

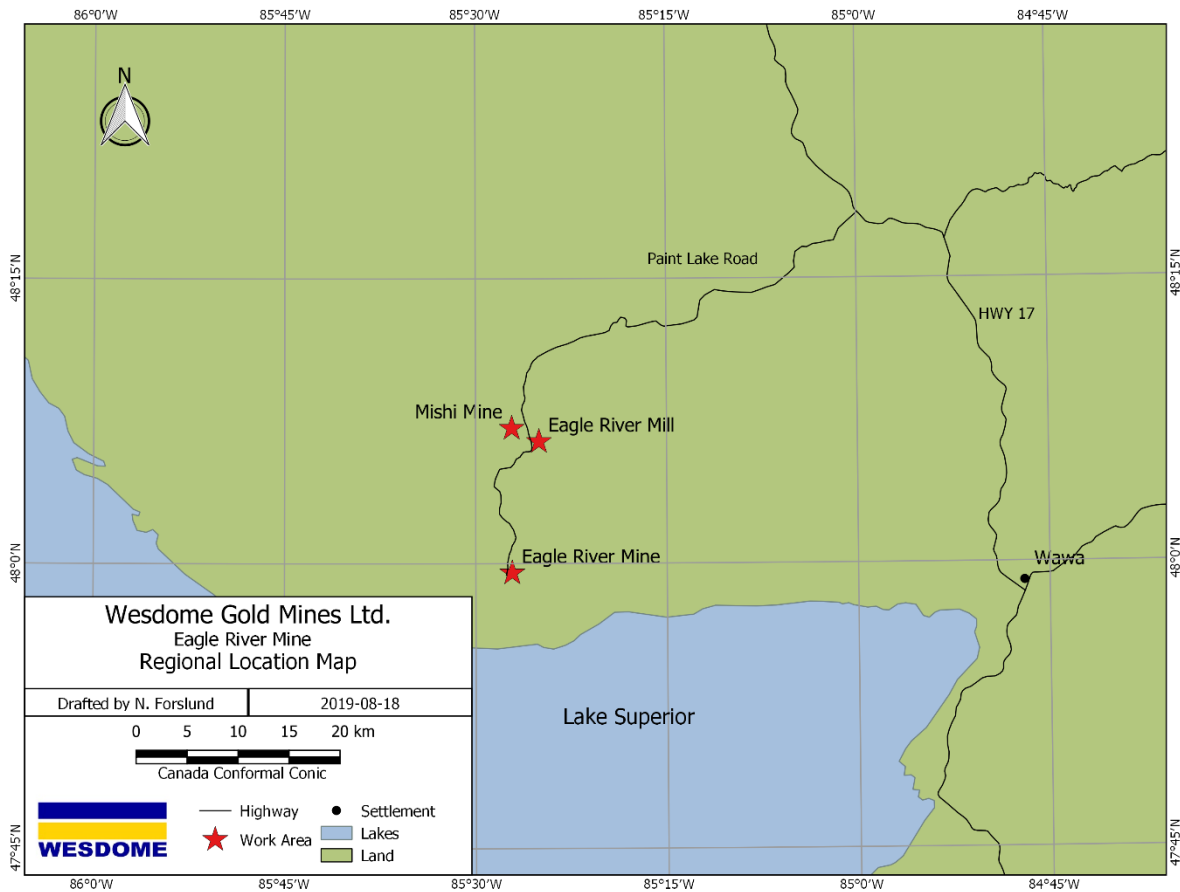


Figure 2- Property Location Map

### 1.3 Previous Exploration

Much drilling has been completed on surface at the Eagle River Mine since its discovery in 1986.

This report does not review and describe the results of historic drilling on the Project 100 area. However, these drill holes and their results are illustrated on drill sections and compilation map prepared for this report and appearing in appendix.

To the author's knowledge, no diamond drilling has ever been completed along the north flank of the mine, within Project 105 area.

### 1.4 Regional Geology

The Eagle River complex is located in the Pukaskwa-University River area along the north shore of Lake Superior, between the towns of Wawa and Marathon.

The general area is characterized by a series of synformal Archean-aged greenstone remnants of greenschist to amphibolite facies metamorphic grade, resting on gneissic granitic basement rocks. The Mishibishu Lake volcanic belt, host to the Eagle River Complex represents one of these isolated remnants.

The area is crosscut by NE and NW striking faults and fractures. These fractures and associated alkaline intrusive activity may be related to the Kapuskasing arch.

The geology of the Mishibishu Lake volcanic belt is well described in a report by the Ontario Department of Mines (Bennett G., Thurston, P.C, 1977) and later illustrated in more detail on 1:15,840 scale Ontario Geological Survey Maps P.3151 and P.3152 accompanying Open File Report 5774 (Reid, R.G., et Al., 1992).

In the first publication, it is reported that the major metavolcanic-metasedimentary belt known as the Mishibishu Lake belt, forms an arc which extends from Dog Harbour on the shore of Lake Superior in the east, northwestward through Mishibishu Lake and then continues westward for a distance of about 55 km to the mouth of the Pukaskwa River on Lake Superior. Three stocks of granitic rocks are also reported to intrude the Mishibishu Lake belt and the average thickness of the belt, including the stocks, is estimated at about 16 km.

The second publication illustrates the results of detailed field mapping in this area and thus provides the most detailed overview of the lithologies and structures of this area.

### *1.5 Property and Economic Geology*

Information on the geology of the Eagle River Mine deposit and surroundings is taken from company files, a recent company report (Mannard, G. and Ng, P. 2016) and personal communications with its author, the company's V.P. Exploration.

The Eagle River Mine property is underlain by an east-west striking, sub vertically-dipping and north-facing sequence of mafic to intermediate volcanics. This sequence is bounded by three granitic plutons and includes lesser felsic tuffs and greywackes, as well as thin oxide-facies iron formation members.

The presence of metre-thick iron formations along the north flank of the mine diorite was confirmed in 2016 drilling. This sedimentary unit coincides with a narrow east-west magnetic anomaly appearing on the 2106 airborne magnetic maps. A larger magnetic anomaly appearing north of the mine may reflect the presence of a larger sequence of these iron formations in this area.

The Eagle River Mine has been in continuous production since 1995 on multiple quartz-bearing, shear-hosted gold zones.

The bulk of known reserves at the mine is hosted in quartz vein-bearing east-west striking and steeply north-dipping shear zones cutting a large coarse-grained quartz diorite plug. Quartz veins have been folded accordion-style to eventually reach their existing, mining friendly tabular or lenticular geometry.

The diorite intrusion is elongated along an east-west regional deformation zone; the shape of which is suggestive of a large-scale boudin. This shape could have resulted from flattening of an originally more circular to oval-shaped body as a result of north-south tectonic pressures.

Moving away from the ore zones, both to the north and to the south, there are varying degrees of deformation, including isoclinal to open folded quartz veins and their folded shear envelopes.

From an exploration standpoint, the focus is directed to the most strongly foliated shears and the most highly strained quartz veins which are generally grey to blue, laminated or ribboned and sugary-granular in texture.

## **2.0 2017 DRILL PROGRAM DESCRIPTION AND RESULTS**

### *2.1 Program Description*

At the Eagle River mine (Project 100), 16 follow-up drill holes were completed in 2017.

These holes were designed to continue testing east-west projections the mine's multiple north-dipping (steeply) gold zones at levels difficult to test by underground drilling; more specifically aimed at projections of drill holes of the 2016 drill program which had returned favourable results. This work commenced May 24<sup>th</sup>, 2017 and was completed July 14<sup>th</sup>, 2017, with 4672m of NQ-size drilling completed in 16 holes. All ERM-series (Project 100) drill holes were directed southward (Azimuth 180°) at various inclinations on the mine's steeply-north dipping ore zones.

Access to all 2017 drill sites was via the mine site's road network, with only the two drill holes of Project 105 accessible by walking several hundred metres along drill trails.

In terms of drill monitoring, company field inspection forms created at the end of 2016 were used by Wesdome staff to document drill collar and trail conditions. A separate form prepared for drill contractors was diligently filled out by G4 drilling's foremen. In this regard, all drill sites, trails and pumping station sites were left in very good condition, free of garbage, equipment and spills.

Drill collars were positioned in the field with a Garmin CX-60 portable GPS instrument in U.T.M. grid coordinates in NAD 83, Zone 16. This instrument generally provides a reading accuracy ranging 2-6 m, depending on the time of day, weather, and presence of dense forest cover and/or steep slopes masking the skies. Drill collars were then aligned by compass.

Once completed, all drill casings were capped.

The position of each drill collar was later checked in Eagle Mine coordinates with a Leica model RTK GPS which provided an accuracy of a few cm. This instrument was also used to verify the alignment of each drill hole when the drill was in place.

In terms of drill alignment, to avoid the inaccuracies obtained the previous year, a greater separation between Leica GPS reading points was sought in 2017. Since the side walls of each

drill shack is parallel to the drill mounting, Leica readings were taken at the front and back corners of the shack, resulting in a separation of 6 metres and greater alignment accuracy. Though satellite signals were weak at times, this separation provided accurate readings for the majority of drill holes. These coordinates along with additional collar information are presented in the table below.

Table 3 - Drill hole collars

Survey	Azimuth	Dip	Length (m)	Easting	Northing	Elevation	No. of Samples
ERM-2017-01	181.94	-63	300	614853	5315558	496.271	86
ERM-2017-02	181.00	-49	250	614748	5315549	494.476	116
ERM-2017-03	183.33	-63	300	614748	5315549	494.338	187
ERM-2017-04	149.35	-49	252	614748	5315549	494.506	73
ERM-2017-05	149.09	-60	300	614747.8	5315549	494.511	76
ERM-2017-06	174.00	-54	351	614755.6	5315636	471.417	103
ERM-2017-07	176.00	-60	402	614755.7	5315636	471.406	201
ERM-2017-08	178.22	-50	252	614712.9	5315535	492.68	82
ERM-2017-09	178.22	-63	300	614712.9	5315535	492.657	115
ERM-2017-10	174.99	-48	354	614707.9	5315638	469.918	151
ERM-2017-11	175.00	-53	405	614708	5315639	470.265	240
ERM-2017-12	176.41	-62	84	615482	5315735	434.904	20
ERM-2017-13	179.13	-60	351	615481.9	5315734	434.989	145
ERM-2017-14	220.38	-54	249	615481.8	5315738	434.925	86
ERM-2017-15	220.38	-70	303	615481.8	5315738	435.006	171
ERM-2017-16	220.38	-45	219	615482	5315738	434.897	83
<b>Totals:</b>			<b>4672</b>				

Upon arrival at the core shack, core boxes were measured, tagged and then stored in racks for later core logging. When possible, the core was examined rapidly and a summary log (quick log) was prepared before storing core in the racks. Once moved into the core shack, RQD measurements were taken and the core was then examined and described in detail; and samples marked/tagged for sawing/sampling.

Core logging and sampling information was entered directly into lap top computers and Geotic Log core logging program (version 6.9.3.).

Sampling of drill core on both project areas was completed at an interval of 0.3 m quartz veins and sheared intervals along targeted mineralized zones; and 0.5 to 1.0 m intervals elsewhere and depending on the presence of favourable characteristics of any given quartz zone or shear. Finally, no sampling was completed on massive portions of the gabbro and diabase.

In terms of quality controls, a 3 QA/QC sample package (a blank, a duplicate and a commercial gold standard) was into the sample stream at an interval of 20 samples inserted by the individual



logging the core. Consequently, 15 QA/QC samples were inserted for each 50 sample booklets, thus representing 30% of all analysis. The standard used was RockLabs OxH122 (1.247g/t), whereas blanks were drawn from Eagle River Mine massive diorite.

QAQC plots for standards and blanks can be found in Appendix D. Most blanks fall below a 0.1g/t threshold; however 2 of 107 blanks failed. This could be caused because “barren” mine diorite was used as blank material and may contain trace gold mineralization. Using barren diabase instead of mine diorite material is recommended for future projects. For standards, many values did not fall within the 95% confidence window, but a majority still fall within 2 standard deviations. Table 5 below summarizes standard analyses by standard type.

Table 4 - Standard results.

Reference	Grade (g/t)	Standard deviation	95% confidence	n	Pass (2SD)	Average SD
OxH122	1.247	0.031	0.009	104	39	4.43

Drill core was sawn and one half of each sample was bagged with its respective sample tag, sealed and then shipped daily by Wesdome transport truck to the company’s assay lab situated in nearby Wawa. The other half of each sample was placed in the core box with its respective sampling tag and the boxes later transferred to the Eagle Rive core racks for long-term storage.

At the lab, samples were crushed and powders then analysed by fire assay with gravimetric finish, yielding results in grams per ton (g/t) with checks also in g/t.

## 2.2 Program Results

The 2017 drilling program was generally successful at intersecting ore-bearing shears at their expected positions and confirmed the overall predictability and nature of the gold-bearing shear-vein system

Details on the geology and the distribution of gold mineralization outlined in these two drill programs have been compiled on the maps and drill sections of the present report.

Table 5 below lists the highlights of the 2017 dill program, which are also illustrated on the general compilation map of the Eagle River Mine and surroundings also presented below in Figure 3.

Table 5 - Program results

Hole ID	Zone	From (m)	To (m)	Core length	True thickness	Au AVG (g/t)
ERM-2017-06	Zone 7	316.5	317.8	1.3	0.99	24.00
ERM-2017-14	Zone 300	180	182	2	1.07	10.81
ERM-2017-01	Zone 7	120	121	1	0.63	19.76
ERM-2017-07	Zone 7	366	368.7	2.7	1.86	2.93
ERM-2017-03	Zone 7	155.4	158.9	3.5	2.14	2.00

ERM-2017-07	Zone 7	361.3	363.4	2.1	1.44	2.71
ERM-2017-11	Zone 7	344.4	345.4	1	0.77	5.23
ERM-2017-13	Zone 300	108	109	1	0.6	5.16
ERM-2017-08	Zone 300	146	147	1	0.75	4.81
ERM-2017-11	Zone 300	270.4	273	2.6	1.79	1.72
ERM-2017-03	NA	255.5	257.5	2	1.48	2.20
ERM-2017-15	NA	270	278	8	4.83	0.53
ERM-2017-06	Zone 300 Sector	206	207	1	0.67	4.17
ERM-2017-06	Zone 7 Sector	336	336.6	0.6	0.46	6.76
ERM-2017-11	Zone 7	333.8	334.6	0.8	0.61	4.86
ERM-2017-04	Zone 7	166.7	167.3	0.6	0.45	4.79
ERM-2017-14	NA	156	157	1	0.71	2.84
ERM-2017-15	Zone 300 Sector	162	163.5	1.5	0.56	1.87
ERM-2017-15	Zone 300 Sector	171	172	1	0.38	2.68
ERM-2017-02	Zone 7	133	133.5	0.5	0.4	5.11
ERM-2017-13	Zone 300 Sector	164	164.5	0.5	0.3	4.84
ERM-2017-02	NA	96	98	2	1.77	1.18
ERM-2017-14	NA	47	48	1	0.71	2.24
ERM-2017-11	Zone 7 Sector	335.4	339.2	3.8	2.93	0.58
ERM-2017-07	Zone 300	231	231.4	0.4	0.24	5.01
ERM-2017-15	NA	220	225	5	2.99	0.40
ERM-2017-13	Zone 7	280	281	1	0.7	1.98
ERM-2017-01	NA	100	103	3	2.22	0.64
ERM-2017-05	NA	67.5	69	1.5	1.09	1.23
ERM-2017-07	Zone 7 Sector	370.5	372	1.5	1.03	1.18
ERM-2017-08	NA	142	146	4	3.58	0.43
ERM-2017-02	NA	30	31	1	0.88	1.68
ERM-2017-01	NA	223	231.5	8.5	6.43	0.20
ERM-2017-11	NA	243	245	2	1.69	0.80
ERM-2017-06	NA	213	218	5	4.22	0.31
ERM-2017-08	NA	86	88	2	1.76	0.78
ERM-2017-03	NA	208.3	209.3	1	0.73	1.46
ERM-2017-03	NA	237.6	238.1	0.5	0.37	2.88
ERM-2017-08	Zone 300 Sector	183	184	1	0.75	1.36
ERM-2017-06	NA	193	197	4	3.37	0.33
ERM-2017-14	NA	118	120	2	1.44	0.66
ERM-2017-15	NA	134	137	3	1.78	0.44
ERM-2017-13	NA	42	43	1	0.79	1.28
ERM-2017-09	NA	89	91	2	1.48	0.62
ERM-2017-10	NA	296.2	298	1.8	1.64	0.67
ERM-2017-09	NA	9	10.5	1.5	1.09	0.80
ERM-2017-13	NA	181	183	2	1.58	0.58
ERM-2017-15	NA	237	239	2	1.2	0.58

ERM-2017-10	Zone 300	234.7	235.1	0.4	0.31	2.87
ERM-2017-01	NA	88	89	1	0.74	1.12
ERM-2017-08	Zone 300 Sector	176	177	1	0.75	1.12
ERM-2017-04	NA	33	35	2	1.61	0.55
ERM-2017-01	NA	17	18	1	0.73	1.08
ERM-2017-13	NA	122	123	1	0.79	1.08
ERM-2017-15	NA	284	285	1	0.61	1.08
ERM-2017-02	NA	179.8	180.3	0.5	0.44	2.12
ERM-2017-14	NA	94	96	2	1.44	0.52
ERM-2017-03	NA	180.4	181.4	1	0.73	1.02
ERM-2017-13	NA	111	113	2	1.58	0.50
ERM-2017-16	NA	88	90	2	1.52	0.50
ERM-2017-13	NA	89.5	93	3.5	2.75	0.29
ERM-2017-11	NA	178.3	179	0.7	0.59	1.42
ERM-2017-04	NA	103.5	103.9	0.4	0.33	2.40
ERM-2017-09	NA	150	153.5	3.5	2.63	0.27
ERM-2017-03	NA	162.4	162.9	0.5	0.36	1.88
ERM-2017-13	NA	118	118.5	0.5	0.39	1.84
ERM-2017-13	NA	146.5	147	0.5	0.39	1.80
ERM-2017-01	NA	95	96	1	0.74	0.84
ERM-2017-05	NA	203	204	1	0.75	0.84
ERM-2017-11	Zone 7 Sector	329.7	331.6	1.9	1.46	0.44
ERM-2017-01	NA	190	192	2	1.5	0.40
ERM-2017-11	NA	240.9	242.2	1.3	1.1	0.61
ERM-2017-09	NA	48	49.5	1.5	1.1	0.52
ERM-2017-02	NA	159.4	166	6.6	5.85	0.11
ERM-2017-02	NA	193.5	196	2.5	2.22	0.29
ERM-2017-15	NA	55	56	1	0.59	0.72
ERM-2017-10	Zone 300 Sector	221.3	221.6	0.3	0.23	2.36
ERM-2017-06	NA	197.5	198	0.5	0.42	1.40
ERM-2017-11	NA	237.7	238.1	0.4	0.34	1.60
ERM-2017-16	NA	156	158	2	1.51	0.32
ERM-2017-02	NA	191.8	192.3	0.5	0.44	1.24
ERM-2017-05	NA	186	190	4	2.99	0.15
ERM-2017-08	NA	48	50	2	1.75	0.30
ERM-2017-06	NA	189	192	3	2.53	0.19
ERM-2017-09	Zone 7 Sector	259	260.5	1.5	0.98	0.36
ERM-2017-13	NA	116.8	117.5	0.7	0.55	0.76
ERM-2017-09	NA	222	225.5	3.5	2.67	0.15
ERM-2017-06	NA	176	177	1	0.84	0.52
ERM-2017-05	NA	19.5	21.5	2	1.43	0.25
ERM-2017-14	NA	186.5	189.5	3	2.14	0.16
ERM-2017-03	NA	179.4	179.9	0.5	0.36	0.92

ERM-2017-11	NA	11	12	1	0.83	0.46
ERM-2017-10	NA	208.2	208.8	0.6	0.54	0.76
ERM-2017-09	Zone 300 Sector	177	178	1	0.56	0.44
ERM-2017-16	NA	124	125	1	0.76	0.44
ERM-2017-10	Zone 7 Sector	317.4	317.7	0.3	0.25	1.44
ERM-2017-11	NA	253.3	253.6	0.3	0.25	1.44
ERM-2017-03	NA	259.5	261	1.5	1.11	0.27
ERM-2017-05	NA	56	57	1	0.72	0.36
ERM-2017-09	NA	115	116	1	0.74	0.36
ERM-2017-16	NA	86	87	1	0.76	0.36
ERM-2017-05	NA	32	34	2	1.44	0.17
ERM-2017-05	NA	168	170	2	1.49	0.16
ERM-2017-09	NA	98.5	99	0.5	0.37	0.64
ERM-2017-09	NA	144	146	2	1.5	0.16
ERM-2017-13	NA	114	115	1	0.79	0.32
ERM-2017-02	NA	26	27	1	0.88	0.30
ERM-2017-11	NA	260.7	261.1	0.4	0.34	0.72
ERM-2017-03	NA	190.1	191.4	1.3	0.95	0.22
ERM-2017-09	NA	14	15	1	0.73	0.28
ERM-2017-11	NA	72	73	1	0.84	0.28
ERM-2017-13	Zone 7 Sector	335	336	1	0.71	0.28
ERM-2017-15	NA	108	109	1	0.59	0.28
ERM-2017-15	NA	111	112	1	0.59	0.28
ERM-2017-15	NA	216	217	1	0.6	0.28
ERM-2017-16	NA	146	147	1	0.75	0.28
ERM-2017-10	Zone 7 Sector	315.1	315.4	0.3	0.25	0.92
ERM-2017-01	NA	297	297.5	0.5	0.38	0.52
ERM-2017-06	NA	303.8	304.7	0.9	0.77	0.28
ERM-2017-06	NA	287.7	288	0.3	0.25	0.84
ERM-2017-11	NA	238.4	239.6	1.2	1.02	0.21
ERM-2017-08	NA	80	81	1	0.88	0.24
ERM-2017-13	NA	128.6	129.1	0.5	0.39	0.48
ERM-2017-15	NA	207	208.5	1.5	0.9	0.16
ERM-2017-15	NA	282	283	1	0.6	0.24
ERM-2017-03	NA	187.4	188.6	1.2	0.87	0.19
ERM-2017-03	NA	133.4	134.2	0.8	0.58	0.28
ERM-2017-02	NA	213.1	214.1	1	0.89	0.22
ERM-2017-10	NA	66.8	67.2	0.4	0.36	0.52
ERM-2017-03	NA	104.9	105.4	0.5	0.36	0.40
ERM-2017-12	NA	35	36	1	0.77	0.20
ERM-2017-07	NA	184.5	184.8	0.3	0.23	0.64
ERM-2017-11	NA	111.2	111.5	0.3	0.25	0.64
ERM-2017-10	NA	69.5	70.4	0.9	0.81	0.21

ERM-2017-07	NA	186.2	186.7	0.5	0.39	0.36
ERM-2017-16	NA	114.5	115	0.5	0.38	0.36
ERM-2017-07	NA	139.1	139.4	0.3	0.23	0.56
ERM-2017-11	NA	83.3	84.5	1.2	1	0.14
ERM-2017-03	NA	70.2	71.7	1.5	1.08	0.11
ERM-2017-07	NA	339	339.4	0.4	0.32	0.36
ERM-2017-01	NA	238.5	239	0.5	0.38	0.28
ERM-2017-02	NA	182.1	182.6	0.5	0.44	0.28
ERM-2017-11	NA	79	79.7	0.7	0.59	0.20
ERM-2017-03	NA	21.1	21.6	0.5	0.36	0.24
ERM-2017-06	NA	248.4	249	0.6	0.51	0.20
ERM-2017-11	NA	92.4	93	0.6	0.5	0.20
ERM-2017-11	NA	314	314.3	0.3	0.26	0.40
ERM-2017-16	NA	24	25	1	0.75	0.12
ERM-2017-11	NA	240.3	240.6	0.3	0.25	0.36
ERM-2017-11	NA	402.1	402.4	0.3	0.26	0.32
ERM-2017-07	NA	174.2	174.5	0.3	0.23	0.24

### 3.0 CONCLUSIONS

The drill program completed in 2017 was successful in expanding gold zones cored in 2016 at the Eagle River Mine.

Gold enrichment observed in 2016 continue to be associated with tectonic deformation accompanied by quartz veining at the Eagle River Mine.

### 4.0 RECOMMENDATIONS

Testing of the 7 zone structure between sections 9300E and 9600E was recommended after 2016 drilling. This area was difficult to access due to rugged terrain, and further scouting for alternate access is recommended. Holes ERM-2016-20, ERM-2016-23 and ERM-2016-24 should be followed up with 25m and 50m stepouts.

### 5.0 REFERENCES

Bennett, Gerald, and Thurston, P.C.  
1977: Geology of the Pukaskwa River-University River Area, Districts of Algoma and Thunder

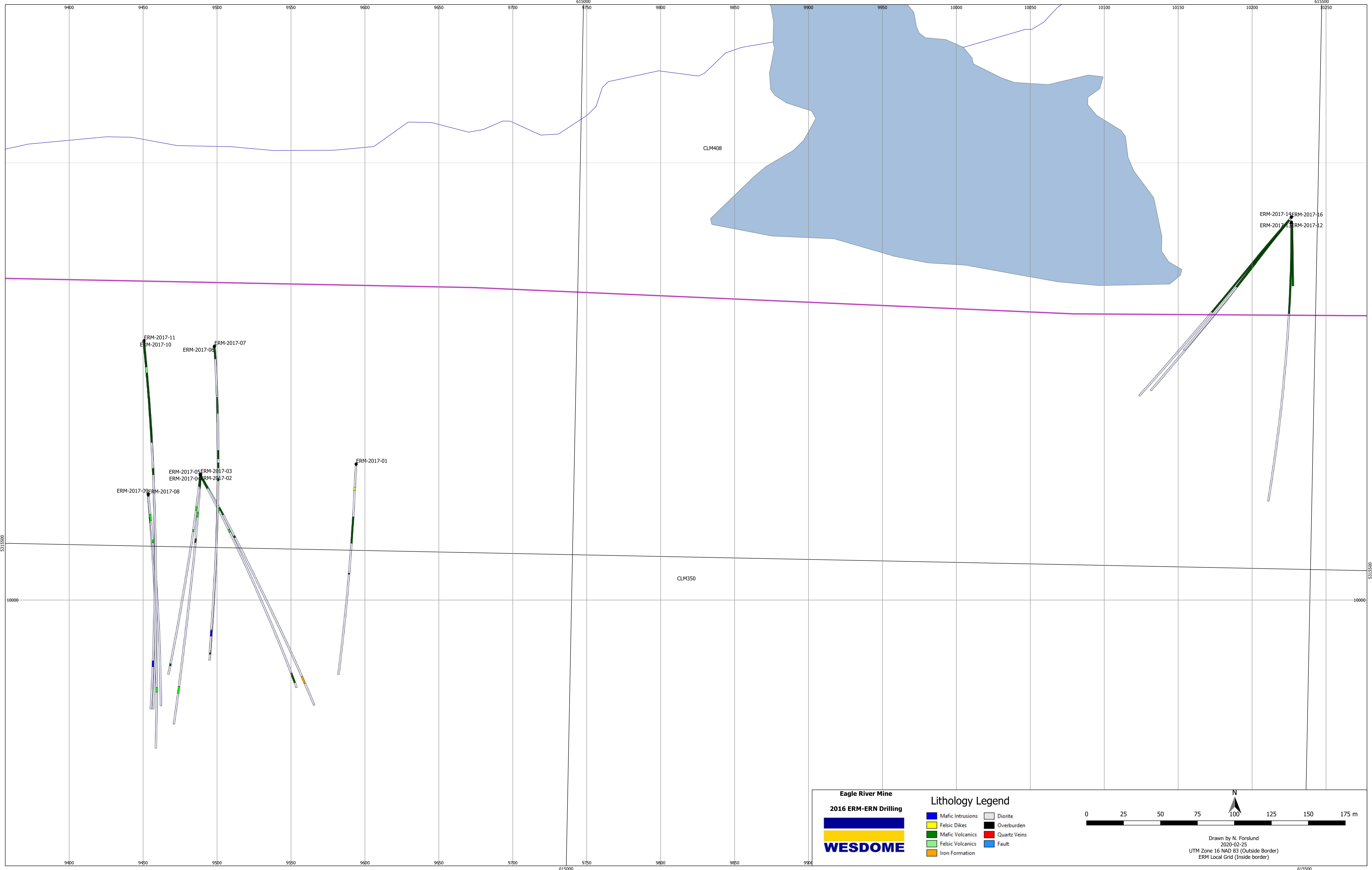
Bay; Ontario Div. Mines, GR153, 60p. Accompanied by Maps 2332 and 2333, scale 1:63,360 or 1 inch to 1 mile; and chart.

Dubé, J., 2016, High Resolution Magnetic Heliborne Survey, Wesdome Gold Mines Ltd., Eagle River & Mishi Projects, Wawa area, Algoma and Thunder Bay districts, Ontario.

Mannard, G., 2016, Technical Report for the Eagle River Complex Including the Eagle River Gold Mine, the Mishi Gold Mine and related Infrastructure (According to Regulation 43-101 and 43-101F1), Mishibishu Lake Area and Point Isacor, Sault Ste. Marie Mining Division, Province of Ontario, Canada, for Wesdome Gold Mines Ltd.

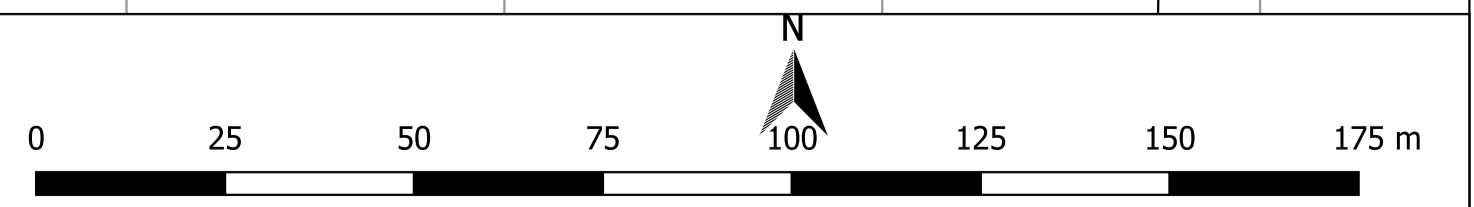
Reid, R.G., Bowen, R.P., Heather, K.B., Logothetis, J. and Reilly, B.A. 1992. Mishibishu Lake area, Pilot Harbour sheet; Ontario Geological Survey, Preliminary Maps P.3155 and P.3156, scale 1:15 840.

Reid, R.G., Bowen, R.R, Reilly, BA., Logothetis, J. and Heather, K.B. 1991. Geology, Structure and Economic Geology of the Mishibishu Lake Area; Ontario Geological Survey, Open File Report 5774, 350p.



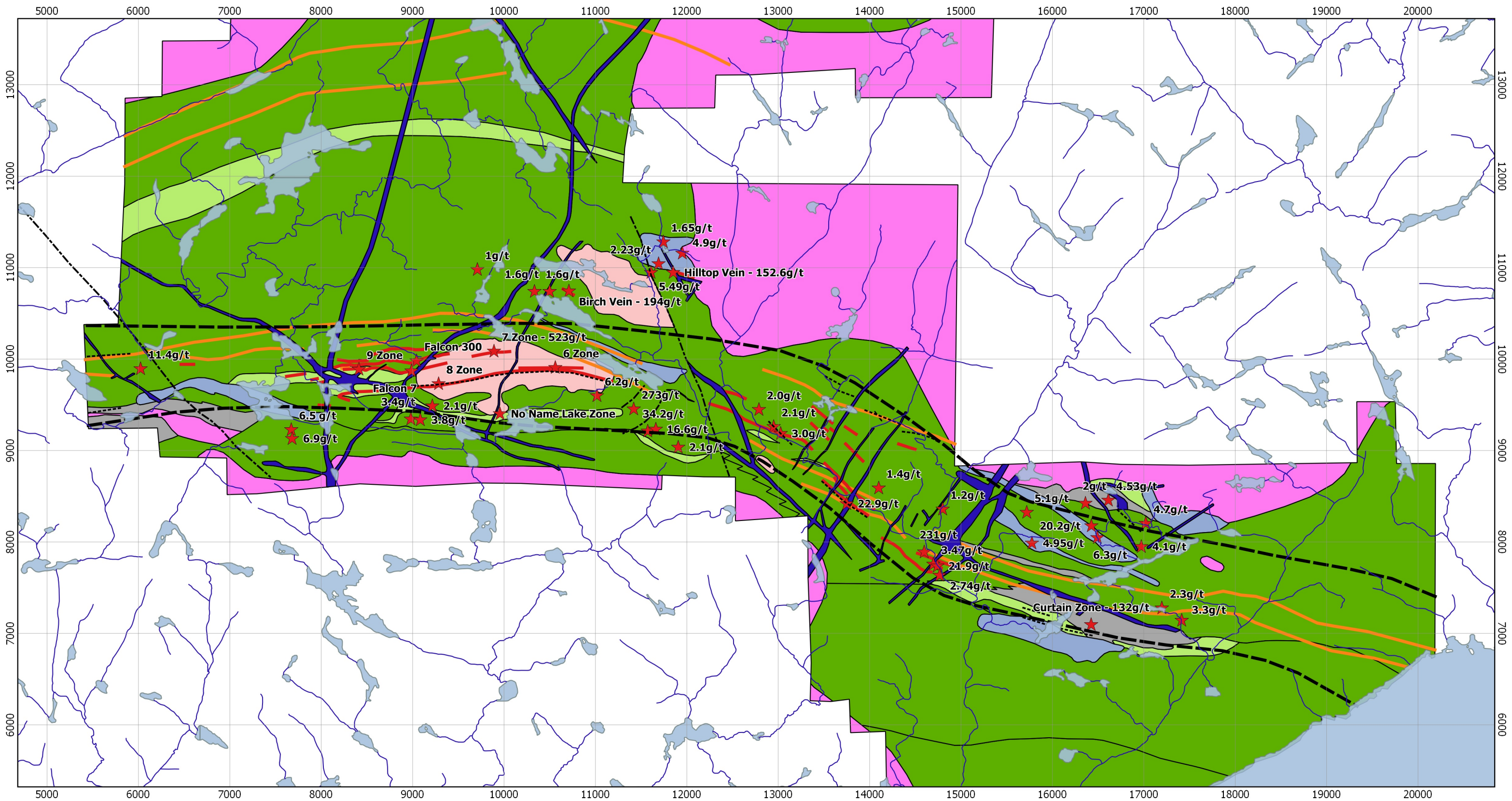
**Eagle River Mine**  
**2016 ERM-ERN Drilling**  


- Lithology Legend**
- Mafic Intrusions
  - Felsic Dikes
  - Mafic Volcanics
  - Felsic Volcanics
  - Iron Formation
  - Diorite
  - Overburden
  - Quartz Veins
  - Fault



Drawn by N. Forslund  
 2020-02-25  
 UTM Zone 16 NAD 83 (Outside Border)  
 ERM Local Grid (Inside border)





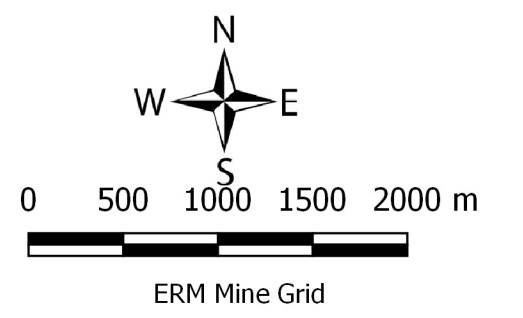
### Legend

- Structures**
- Deformation Zone Boundary
  - - - Fault
  - ..... Shear

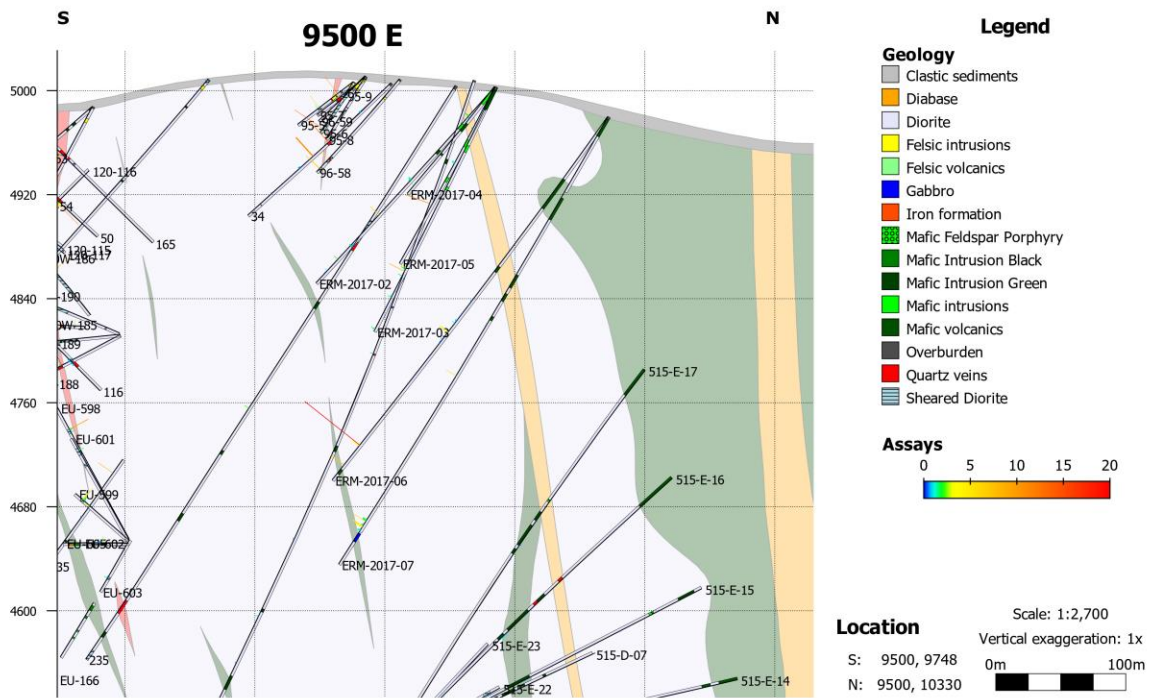
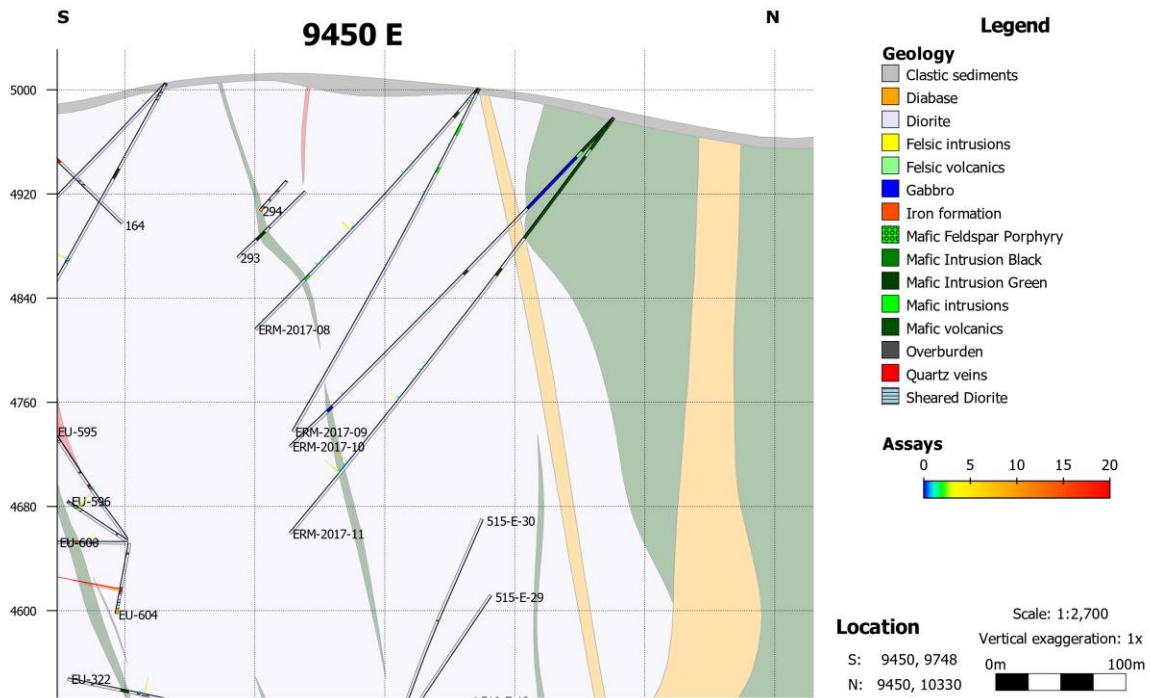
- Geology**
- Quartz Veins
  - Iron Formations
  - Diorite

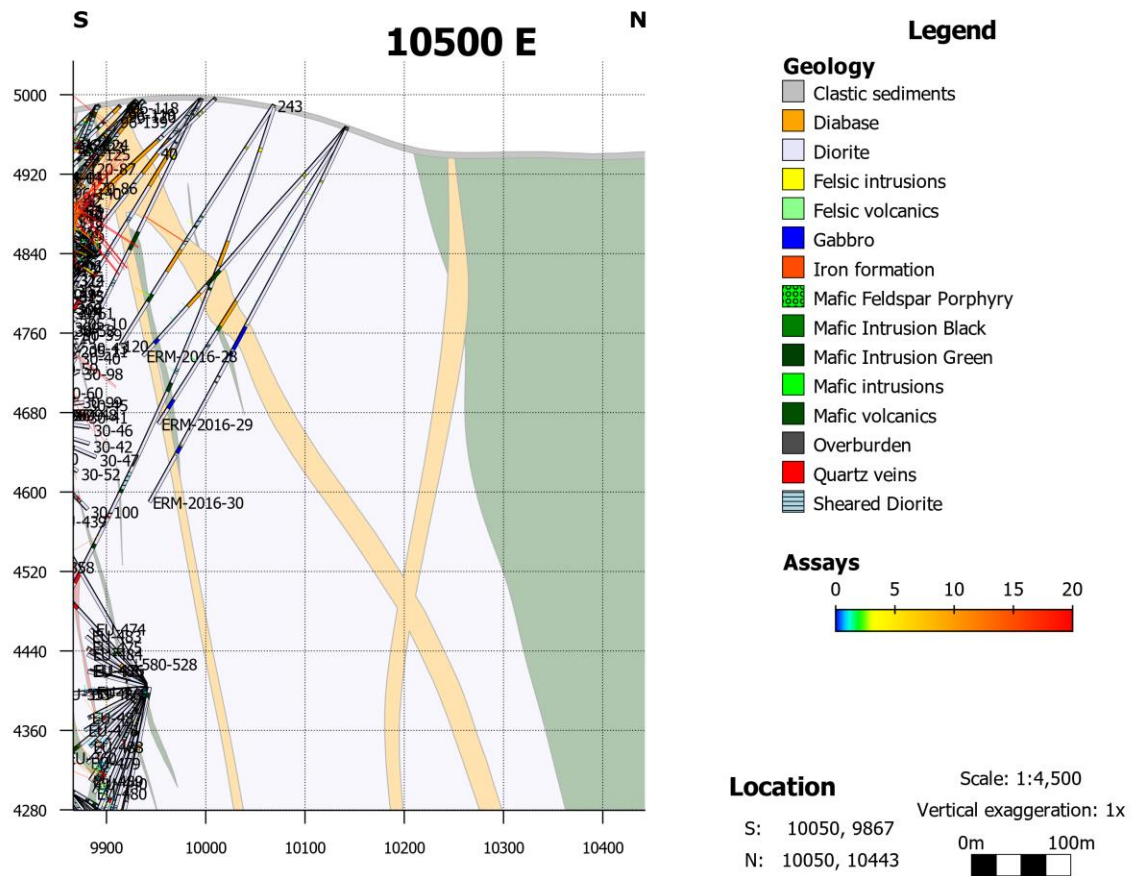
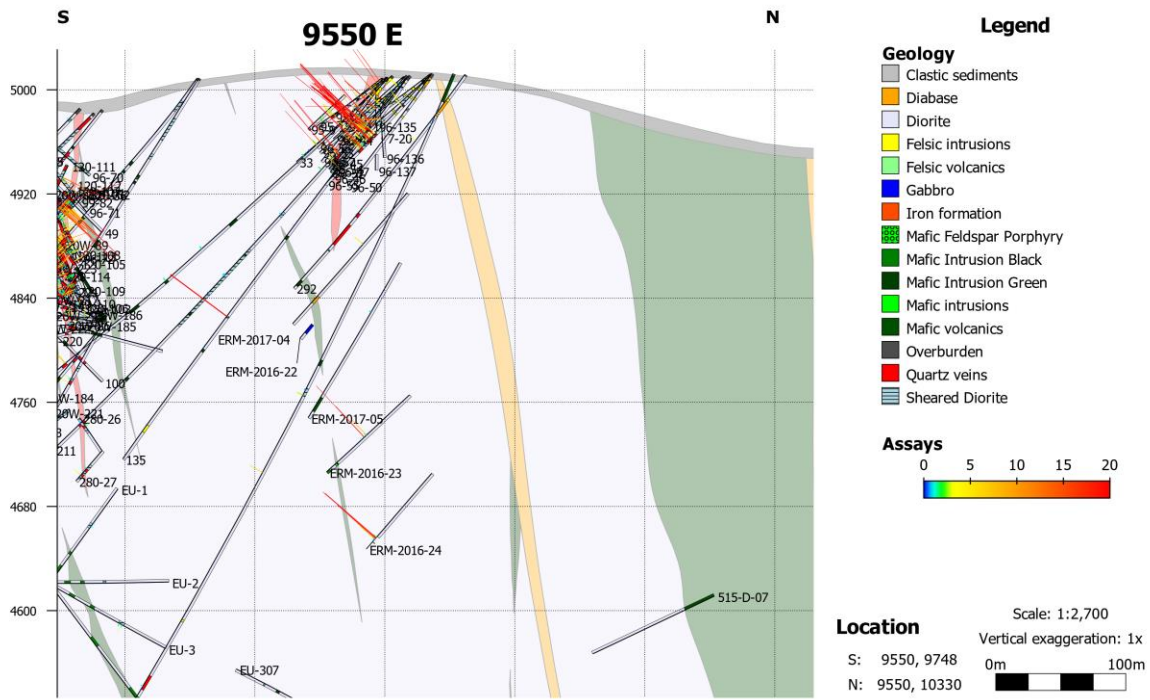
- Metasediments
- Mafic Volcanics-Metasediments (mixed)
- Mafic Volcanics
- Mafic Intrusions (undifferentiated)
- Granite

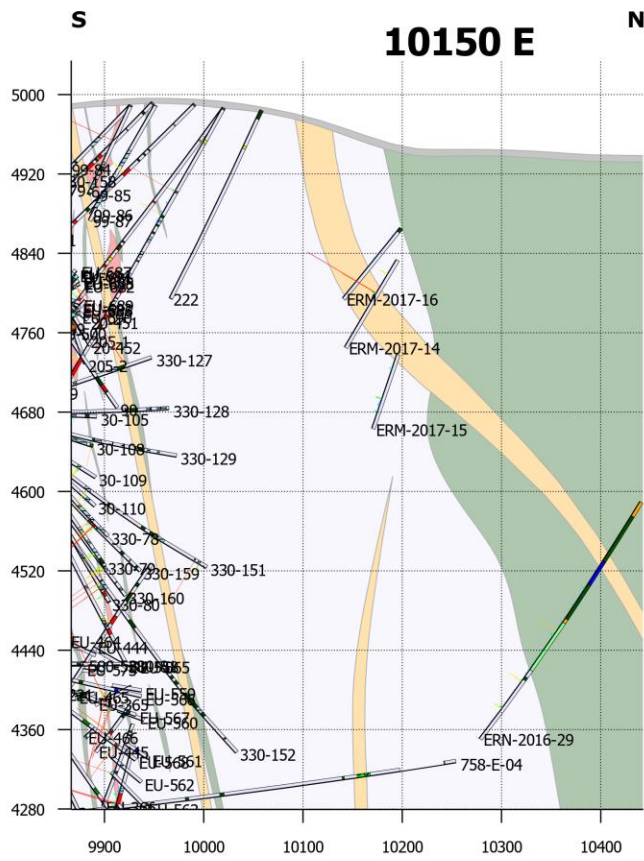
- Gabbro
- Felsic Volcanics
- Felsic Intrusions (undifferentiated)
- Felsic Dikes









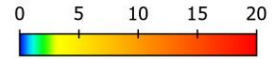


**Legend**

**Geology**

- █ Clastic sediments
- █ Diabase
- █ Diorite
- █ Felsic intrusions
- █ Felsic volcanics
- █ Gabbro
- █ Iron formation
- █ Mafic Feldspar Porphyry
- █ Mafic Intrusion Black
- █ Mafic Intrusion Green
- █ Mafic intrusions
- █ Mafic volcanics
- █ Overburden
- █ Quartz veins
- █ Sheared Diorite

**Assays**



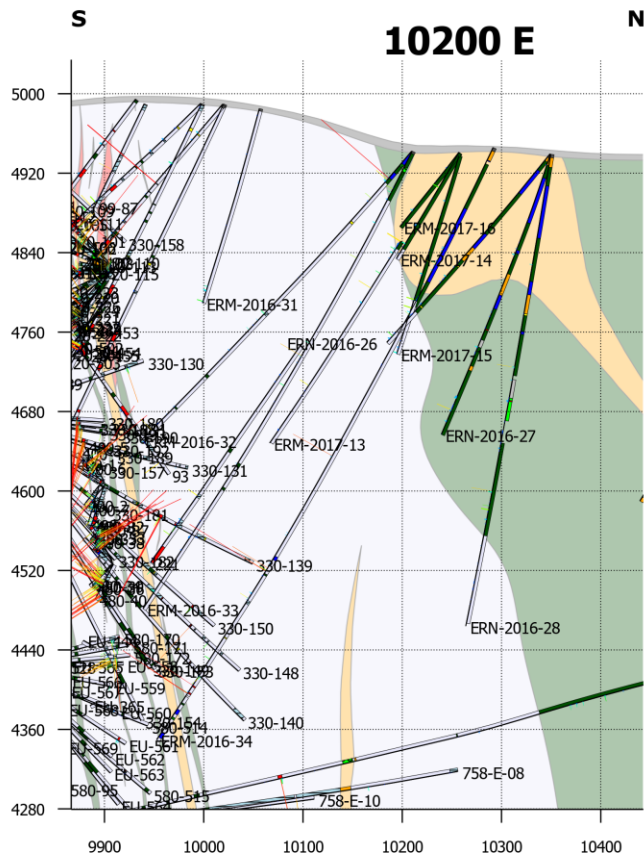
**Location**

S: 10150, 9867  
 N: 10150, 10443

Scale: 1:4,500

Vertical exaggeration: 1x



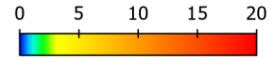


**Legend**

**Geology**

- █ Clastic sediments
- █ Diabase
- █ Diorite
- █ Felsic intrusions
- █ Felsic volcanics
- █ Gabbro
- █ Iron formation
- █ Mafic Feldspar Porphyry
- █ Mafic Intrusion Black
- █ Mafic Intrusion Green
- █ Mafic intrusions
- █ Mafic volcanics
- █ Overburden
- █ Quartz veins
- █ Sheared Diorite

**Assays**



**Location**

S: 10200, 9867  
 N: 10200, 10443

Scale: 1:4,500

Vertical exaggeration: 1x



<b>Code</b>	<b>Decode</b>
OB	Overburden
1	Mafic to Intermediate Volcanic Rocks
1l	Intermediate Volcanics
1la	Intermediate Volcanics (ash tuff)
1lb	Intermediate Volcanics (crystal tuff)
1lc	Intermediate Volcanics (feldspar porphyritic flow)
1ld	Intermediate Volcanics (massive flow)
1le	Intermediate Volcanics (sheared)
1lf	Intermediate Volcanics (fragmental)
1M	Mafic Volcanics
1Ma	Mafic Volcanics (ash tuff)
1Mb	Mafic Volcanics (crystal tuff)
1Mc	Mafic Volcanics (feldspar porphyritic flow)
1Md	Mafic Volcanics (massive flow)
1Me	Mafic Volcanics (sheared)
1Mf	Mafic Volcanics (fragmental)
1Mp	Mafic Volcanics (pillowed)
2	Felsic Volcanic Rocks
2a	Felsic Volcanic (ash tuff)
2b	Felsic Volcanic (crystal tuff)
2c	Felsic Volcanic (lapilli tuff)
2e	Felsic Volcanic (flow)
4	Sedimentary Rocks (undifferentiated)
4b	Argillite
4c	Epiclastic ash tuff
4e	Iron Formation (chlorite/sulphide)
4f	Iron Formation (chlorite/oxide)
5	Diorite/Quartz Diorite
5a	Diorite/Quartz Diorite (coarse grained)
5b	Diorite/Quartz Diorite (medium grained)
5c	Diorite/Quartz Diorite (fine grained)
5d	Diorite (sheared)
5f	Diorite (altered)
10	Mafic intrusive
10a	Diabase
10b	Mafic intrusive (green fine grained)
10c	Mafic intrusive (black fine grained)
10d	Mafic intrusive (feldspar porphyritic)
10e	Mafic intrusive (sheared)
10f	Gabbro
10U	Ultramafic
11	Felsic intrusive

<b>Code</b>	<b>Decode</b>
11a	Felsic intrusive (aphanitic)
11b	Felsic intrusive (feldspar porphyritic)
q	Quartz
qh	Quartz (white massive, bull)
qi	Quartz (glassy)
ql	Quartz (laminated)
APH	Aphanitic
b	Medium Grained
c	Fine Grained
d	Sheared
e	Brecciated
f	altered
FLT	Fault
lap	Lapilli
MAG	Magnetic
MAS	Massive rock
OPH	Ophitic
POB	Porphyroblastic
POR	Porphyritic
RUB	Banded
SHZ	Shear Zone

## Drill Hole Summaries

By J. Laarman

ERM-17-01 was collared at 9594E 10092N at -63 degrees. The hole collared in diorite to 34.75m followed by felsic dike to 39.25m, diorite to 78.2m and mafic volcanic to 116.25m. From 17 to 17.5m, there is an intercept of 1.24 g/t Au hosted in 10% milky quartz veinlets followed by an intercept of 0.92 g/t Au from 17.5 to 18m. From 88 to 89m, there is an intercept of 1.12 g/t Au. From 100 to 101m, there is an intercept of 1.52 g/t Au hosted in 15% milky quartz veinlets with 2-3% pyrite. From 116.25 to 159.25m, there is diorite followed by mafic volcanic to 160.7m. From 120 to 121m, there is an intercept of 20.44 g/t Au hosted in a 15cm wide milky quartz vein. From 160.7 to the end of the hole at 300m, there is diorite.

ERM-17-02 was collared at 9489E 10085N at -49 degrees. The hole collared in mafic volcanic to 13.8m followed by diorite to 37.95m, mafic dike to 43m, diorite to 64.9m and mafic volcanic to 68.7m. From 30 to 31m, there is an intercept of 1.68 g/t Au hosted in 50% milky quartz veinlets. From 68.7 to 212.6m, there is diorite followed by mafic dike to 219.4m and diorite to the end of the hole at 250m. From 96 to 97m, there is an intercept of 1.48 g/t Au. From 133 to 133.5m, there is an intercept of 6.12 g/t Au. From 179.8 to 180.3m, there is an intercept of 2.12 g/t Au. From 191.8 to 192.3m, there is an intercept of 1.24 g/t Au.

ERM-17-03 was collared at 9489E 10085N at -63 degrees. The hole collared in mafic volcanic to 19m. From 19 to the end of the hole at 300m, there is diorite with X-cutting mafic dikes. From 155.4 to 158.9m, there is a zone of 2.24 g/t Au over 3.5m. From 162.4 to 162.9m, there is an intercept of 1.88 g/t Au. From 180.9 to 181.4m, there is an intercept of 1.72 g/t Au. From 208.3 to 208.8m, there is an intercept of 1.84 g/t Au followed by an intercept of 1.08 g/t Au hosted in a weakly sheared zone with quartz-carbonate veinlets. From 237.6 to 238.1m, there is an intercept of 2.88 g/t Au. From 255.5 to 257.5m, there is a zone of 2.2 g/t Au over 2m hosted in a moderate shear zone with 20% milky white quartz veins with strongly sheared sericite and trace pyrite. From 281.8 to 282.3m, there is an intercept of 1.16 g/t Au followed by an intercept of 1.04 g/t Au from 282.3 to 282.8m hosted in a strongly sheared zone with milky white quartz-chlorite veinlets.

ERM-17-04 was collared at 9489E 10084N at -49 degrees. The hole collared in mafic dike to 17.4m. From 17.4 to 71m, there is diorite alternating with mafic volcanic. From 34.5 to 35m, there is an intercept of 1.04 g/t Au hosted in milky quartz vein/veinlets with strong chlorite and biotite. From 71 to the end of the hole at 252m, there is diorite with a X-cutting diabase dike from 222 to 229m. From 103.5 to 103.9m, there is an intercept of 2.4 g/t Au hosted in a milky quartz vein and veinlets with strong shear margins and trace pyrite at the margins. From 166.7 to 167.3m, there is an intercept of 5.08 g/t Au hosted in a moderate shear with 1-10cm wide milky quartz veins with weak chlorite veinlets and trace pyrite.



ERM-17-05 was collared at 9489E 10085N at -60 degrees. The hole collared in mafic volcanic to 20.2m. From 20.2 to 281m, there is diorite with X-cutting mafic dikes. From 67.5 to 69m, there is a zone of 1.23 g/t Au over 1.5m. This is followed by mafic volcanic to 293.6m and diorite to the end of the hole at 300m.

ERM-17-06 was collared at 9498E 10171N at -54 degrees. The hole collared in mafic volcanic alternating with diorite to 219.4m. From 197.5 to 198m, there is an intercept of 1.4 g/t Au. From 206 to 207m, there is an intercept of 4.4 g/t Au. From 219.4 to 340.25m, there is diorite. From 316.5 to 317.8m, there is a zone of 24.67 g/t Au over 1.3m hosted in a milky bull quartz vein with fine healed fractures with chlorite and trace pyrite which includes an intercept of 57.96 g/t Au from 316.5 to 317m. From 336 to 336.6m, there is an intercept of 7.04 g/t Au hosted in a weak to moderate shear with weak milky <5mm wide quartz veinlets parallel to the shear with trace pyrite. This is followed by mafic volcanic to 344.5m and diorite to the end of the hole at 351m.

ERM-17-07 was collared at 9498E 10172N at -60 degrees. The hole collared in mafic volcanic alternating with diorite to 276m. From 231 to 231.4m, there is an intercept of 5.2 g/t Au hosted in a shear with a 10cm wide milky quartz vein with chlorite fragments in the vein and pyrite at their margins. From 276 to 372.3m, there is diorite followed by gabbro to 380.9m and diorite to the end of the hole at 402m. From 361.3 to 363.4m, there is a zone of 2.76 g/t Au over 2.1m hosted in 10% quartz veins and veinlets with trace pyrite at the margins of the veins. From 366.5 to 368.7m, there is a zone of 3.65 g/t Au over 2.2m in the veins. From 370.5 to 371.3m, there is an intercept of 1.16 g/t Au followed by an intercept of 1.2 g/t Au from 371.3 to 372m hosted in a bull white quartz vein, chlorite altered with trace pyrite found along the margins of diorite fragments in the vein.

ERM-17-08 was collared at 9453E 10071N at -50 degrees. The hole collared in diorite to 11.6m followed by felsic dike to 13.8m, diorite to 23.6m, mafic volcanic to 28.9m and diorite to 193.8m. From 86 to 87m, there is an intercept of 1.32 g/t Au in a minor low angle shear zone. From 146 to 147m, there is an intercept of 4.96 g/t Au hosted in 15% quartz veinlets with trace pyrite. From 176 to 177m, there is an intercept of 1.12 g/t Au. From 183 to 184m, there is an intercept of 1.36 g/t Au. From 193.8 to 198.4m, there is a mafic dike followed by diorite to the end of the hole at 252m.

ERM-17-09 was collared at 9453E 10072N at -63 degrees. The hole collared in diorite with X-cutting mafic dikes to 72.3m. From 72.3 to the end of the hole at 300m, there is diorite.

ERM-17-10 was collared at 9451E 10175N at -48 degrees. The hole collared in mafic volcanic to 35m followed by felsic volcanic to 40.9m, gabbro to 95.7m, diorite to 161.8m and mafic volcanic to 166.1m. From 166.1 to 309.4m, there is diorite. From 221.3 to 221.6m, there is an intercept of 2.36 g/t Au hosted in 1cm wide milky quartz veinlets with chlorite. From 234.7 to 235.1m, there is an intercept of 3.64 g/t Au on the side of 1m wide quartz veins with sheared margins. From 296.2 to 296.8m, there is



an intercept of 1.12 g/t Au. This is followed by gabbro to 314.8m and diorite to the end of the hole at 354m. From 317.4 to 317.7m, there is an intercept of 1.44 g/t Au on the side of a large bull quartz vein with sheared margins and trace pyrite.

ERM-17-11 was collared at 9451E 10175N at -53 degrees. The hole collared in mafic volcanic to 30m followed by felsic volcanic to 36.8m, mafic volcanic to 115.3m, diorite to 144.4m and mafic volcanic to 151.4m. From 151.4 to the end of the hole at 405m, there is diorite. From 178.6 to 179m, there is an intercept of 2.36 g/t Au. From 237.7 to 238.1m, there is an intercept of 1.6 g/t Au. From 240.9 to 241.6m, there is an intercept of 1 g/t Au. From 244 to 245m, there is an intercept of 1.08 g/t Au followed by an intercept of 1.44 g/t Au from 253.3 to 253.6m. From 270.4 to 273m, there is a zone of 1.72 g/t Au over 2.6m. From 334.1 to 334.6m, there is an intercept of 10.56 g/t Au. From 341 to 345.4m, there is a zone of 2.02 g/t Au over 4.4m which includes an intercept of 8.52 g/t Au from 344.4 to 344.7m.

ERM-17-12 was collared at 10227E 10256N at -62 degrees. The hole collared in mafic volcanic to the end of the hole at 84m.

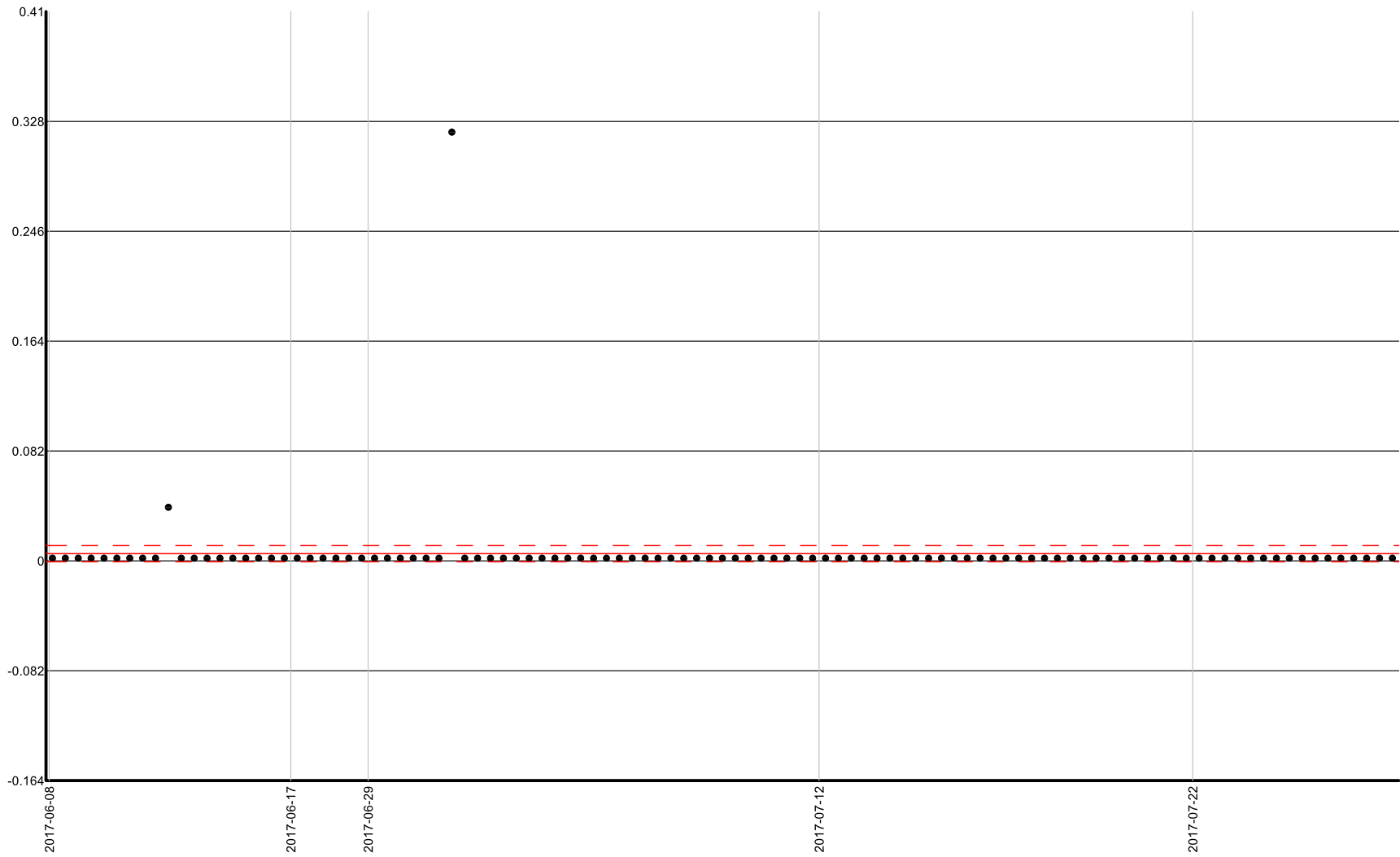
ERM-17-13 was collared at 10227E 10255N at -60 degrees. The hole collared in mafic volcanic to 116.8m. From 42 to 43m, there is an intercept of 1.28 g/t Au. From 108 to 109m, there is an intercept of 5.16 g/t Au. This is followed by diorite to the end of the hole at 350m. From 118 to 118.5m, there is an intercept of 1.84 g/t Au. From 122 to 123m, there is an intercept of 1.08 g/t Au hosted in 20% quartz veinlets. From 146.5 to 147m, there is an intercept of 1.8 g/t Au. From 164 to 164.5m, there is an intercept of 6.56 g/t Au hosted in 30% quartz veinlets. From 280.5 to 281m, there is an intercept of 3.52 g/t Au hosted in 30% quartz veinlets.

ERM-17-14 was collared at 10226E 10259N at -54 degrees. The hole collared in mafic volcanic to 124.4m. From 47 to 48m, there is an intercept of 2.24 g/t Au hosted in 20% quartz veinlets. From 118 to 119m, there is an intercept of 1.2 g/t Au in a shear zone. This is followed by diorite to the end of the hole at 249m. From 156 to 157m, there is an intercept of 2.84 g/t Au. From 180 to 182m, there is a zone of 12.24 g/t Au over 2m hosted in 5 to 20cm wide quartz-chlorite veins with 1-2% pyrite which includes an intercept of 31.08 g/t Au from 180 to 180.5m.

ERM-17-15 was collared at 10227E 10259N at -70 degrees. The hole collared in mafic volcanic to 163.2m. From 162 to 163m, there is an intercept of 2.64 g/t Au hosted in two 30cm wide quartz veins with 3-5% pyrite, 1% pyrrhotite and a speck of visible gold. This is followed by diorite to the end of the hole at 303m. From 171 to 172m, there is an intercept of 2.68 g/t Au in a shear zone. From 220 to 221m, there is an intercept of 1.2 g/t Au. From 270 to 271m, there is an intercept of 2.16 g/t Au. From 284 to 285m, there is an intercept of 1.08 g/t Au.

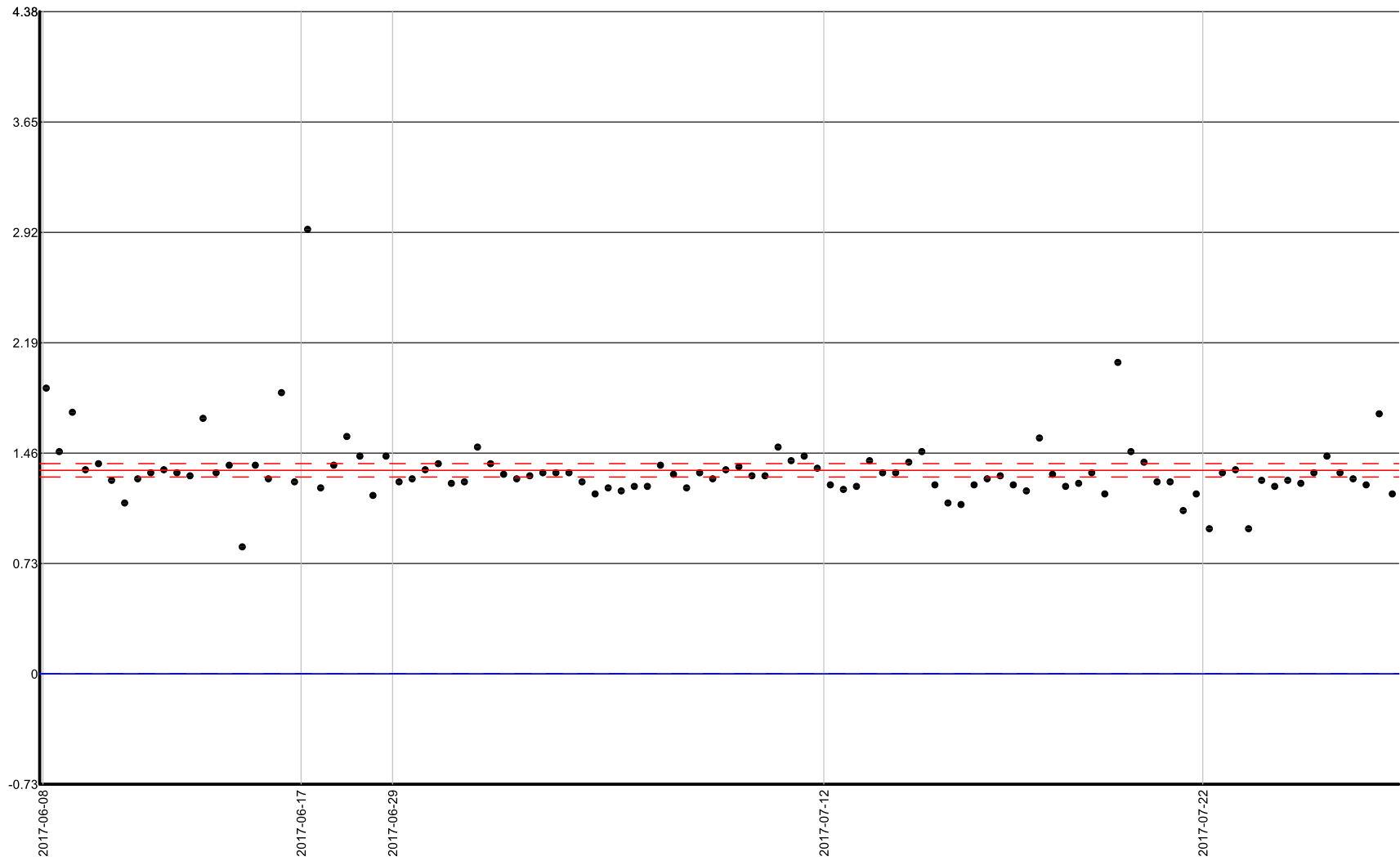
ERM-17-16 was collared at 10227E 10259N at -45 degrees. The hole collared in mafic volcanic to 116.85m. This is followed by diorite to the end of the hole at 219m.

Blank Dio analyzed for Au (g/t)  
All the samples have been used for the statistical calculations.  
Statistics: (N=105; Min.=0.002; Max.=0.32; Mean=0.00539 ± 0.006 at 95% conf.; S=0.0312)



— — Measured interval at 95% conf.

Standard OXH122 analyzed for Au (g/t)  
All the samples have been used for the statistical calculations.  
Statistics: (N=104; Min.=0.84; Max.=2.94; Mean=1.346058 ± 0.0445 at 95% conf.; S=0.2302)



— — Measured interval at 95% conf.

— — Theoretical interval at 95% conf.