

We are committed to providing [accessible customer service](#).

If you need accessible formats or communications supports, please [contact us](#).

Nous tenons à améliorer [l'accessibilité des services à la clientèle](#).

Si vous avez besoin de formats accessibles ou d'aide à la communication, veuillez [nous contacter](#).

# Field Trip 5 Black Mtn

March 30  
2018

30-Mar-18 Geological Field Trip  
Map Staking Trip March 30 2018

Jim Martin, John Andreana

geophysics **Beep Mat conductors dominated, unlike earlier use of BM fall 2017 only one magnetic location - near rusty metased (pyrrhotite ?)**

prospecting **found 2 graphite bearing rock units (marble, rusty metased), confirmed with MNDM Tweed Regional Geologist Peter LeBaron leading to decision to map stake area and area linking on strike with existing claims**

park at corner Quackenbush Road and Matawatchan Rd. Walk in - snow, ice.  
round trip 7 hours, 12 km

**UTM 18 Easting GPS Northing**

**stop 1** walk Quackenbush Road, past Quackenbush Lake, to where crown starts 335137 4995520

**stop 2** west side of Trapper Lake, off main road to east side  
Beep Mat Conductor HFR 665 LFR 610 local boulder no sample  
BM Conductor 1700 1583 ground no sample 335291 4995225  
just to west of trail heading from road NE downslope to Trapper Lake

circled around the area looking at outcrop, got reading 500 + to south but near junked TV antenna!  
returned to trail, then walked SW to road, followed road to power line

**stop 3** power line trail conductor low numbers, but BM beeping with Conductor light marble samples, 50 + m on strike, 7 m wide outcrop under a power line tower does this affect BM ? 335707 4994896

**stop 4** conductor low numbers, but BM beeping with Conductor light numbers 43 40 marble - fizz test, got sample #1 170 m long outcrop- long outcrop - 20 m SE of tower, 150 m NE of tower 335778 4994974

**stop 5** no BM reading granitic? sample # 2 335913 4995069

**stop 6** **graphite found in marble**  
just before break for lunch John followed a marble conductor NE, slightly into bush on north side of power line easement, just across from where walking trail on easement goes south off easement  
sample has 1 to 3 % graphite flakes confirmed by P. LeBaron April 5, 2018 in Tweed  
Sample A graphite follows a light brown band in the marble

on way back estimated where John found graphite in marble, taking a GPS on trail across	(south)
from estimated location (north side of power line easement)	335801 4994950
then from satellite imagery 17-May-18	335930 4995100

**stop 7** ridge, low conductivity numbers but BM beeping conductor 336151 4995230

**stop 8** ridge, low conductivity numbers but BM beeping conductor 336196 4995251

**stop 9** ridge, rusty meta sed, not much beeping 336239 4995276

**stop 10** ridge, marble, fine specs gr, low conductivity numbers but cond beeping 336352 4995392

**stop 11** low numbers but conductor light and beeping 336466 4995451

**stop 12** **12A** magnetic anomaly 336536 4995509  
**12B** end 336667 4995595  
**12C** conductor high rusty metased with gr **graphite** 336619 4995580

**samples in rusty metased with graphite confirmed by P. LeBaron April 5, 2018 in Tweed**  
Sample B said similar to samples from Little Bryan in Lynndoch

on trail just before it leaves power line clearing easement heading NW  
we followed trail a little and went into bush to see if can follow on strike - did not  
Need to go back to showing and follow

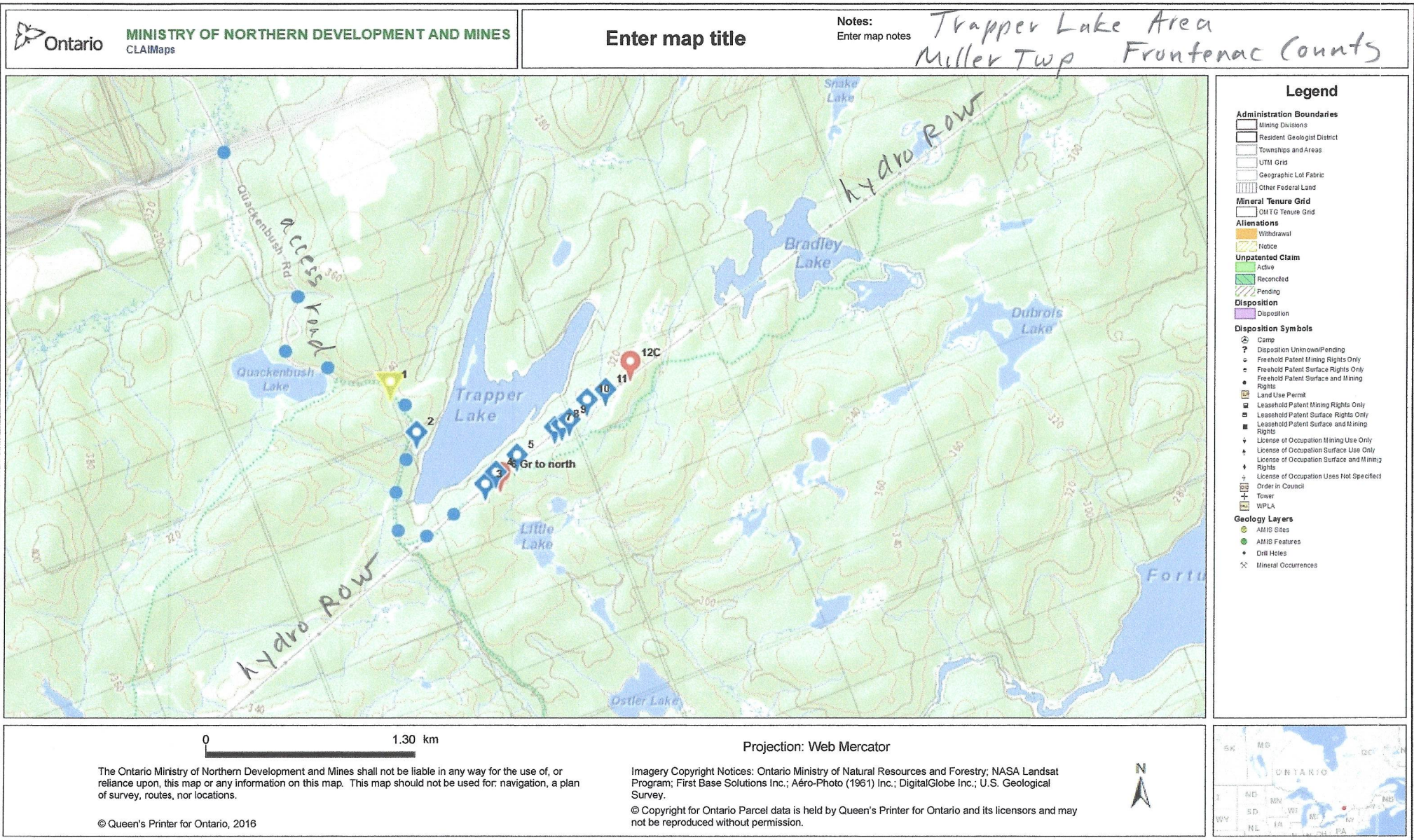
**stop 13** HF 90 MAG -446 HF up to MAG no UTM no UTM  
100 -150

**stop 14** Conductor HFR 28 LFR 18 beeping conductor 336628 4995608

409269



March 30, 2018 Field work  
 Topo  
 + Locations



409269



Topo  
 + Locations  
 March 30, 2018 Field Work

Enter map title

Notes:  
 Enter map notes

Trapper Lake Area  
 Miller Twp Frontenac County



Legend

- Administration Boundaries**
  - Mining Divisions
  - Resident Geologist District
  - Townships and Areas
  - UTM Grid
  - Geographic Lot Fabric
  - Other Federal Land
- Mineral Tenure Grid**
  - OMTG Tenure Grid
- Allenations**
  - Withdrawal
  - Notice
- Unpatented Claim**
  - Active
  - Reconciled
  - Pending
- Disposition**
  - Disposition
- Disposition Symbols**
  - Camp
  - Disposition Unknown/Pending
  - Freehold Patent Mining Rights Only
  - Freehold Patent Surface Rights Only
  - Freehold Patent Surface and Mining Rights
  - Land Use Permit
  - Leasehold Patent Mining Rights Only
  - Leasehold Patent Surface Rights Only
  - Leasehold Patent Surface and Mining Rights
  - License of Occupation Mining Use Only
  - License of Occupation Surface Use Only
  - License of Occupation Surface and Mining Rights
  - License of Occupation Uses Not Specified
  - Order in Council
  - Tower
  - WPLA
- Geology Layers**
  - AMIS Sites
  - AMIS Features
  - Drill Holes
  - Mineral Occurrences



Projection: Web Mercator

The Ontario Ministry of Northern Development and Mines shall not be liable in any way for the use of, or reliance upon, this map or any information on this map. This map should not be used for: navigation, a plan of survey, routes, nor locations.

© Queen's Printer for Ontario, 2016

Imagery Copyright Notices: Ontario Ministry of Natural Resources and Forestry; NASA Landsat Program; First Base Solutions Inc.; Aéro-Photo (1961) Inc.; DigitalGlobe Inc.; U.S. Geological Survey.

© Copyright for Ontario Parcel data is held by Queen's Printer for Ontario and its licensors and may not be reproduced without permission.



409269



Topo  
+ Locations  
+ Private Land/Crown Land

March 30, 2018 Field work  
Trapper Lake Area

Enter map title

Notes:  
Enter map notes



### Legend

- Administration Boundaries**
  - Mining Divisions
  - Resident Geologist District
  - Townships and Areas
  - UTM Grid
  - Geographic Lot Fabric
  - Other Federal Land
- Mineral Tenure Grid**
  - OMTG Tenure Grid
- Alienations**
  - Withdrawal
  - Notice
- Unpatented Claim**
  - Active
  - Reconciled
  - Pending
- Disposition**
  - Disposition
- Disposition Symbols**
  - Camp
  - Disposition Unknown/Pending
  - Freehold Patent Mining Rights Only
  - Freehold Patent Surface Rights Only
  - Freehold Patent Surface and Mining Rights
  - Land Use Permit
  - Leasehold Patent Mining Rights Only
  - Leasehold Patent Surface Rights Only
  - Leasehold Patent Surface and Mining Rights
  - License of Occupation Mining Use Only
  - License of Occupation Surface Use Only
  - License of Occupation Surface and Mining Rights
  - License of Occupation Uses Not Specified
  - Order in Council
  - Tower
  - WPLA
- Geology Layers**
  - AMIS Sites
  - AMIS Features
  - DNI Holes
  - Mineral Occurrences



Projection: Web Mercator

The Ontario Ministry of Northern Development and Mines shall not be liable in any way for the use of, or reliance upon, this map or any information on this map. This map should not be used for: navigation, a plan of survey, routes, nor locations.

Imagery Copyright Notices: Ontario Ministry of Natural Resources and Forestry; NASA Landsat Program; First Base Solutions Inc.; Aéro-Photo (1961) Inc.; DigitalGlobe Inc.; U.S. Geological Survey.

© Copyright for Ontario Parcel data is held by Queen's Printer for Ontario and its licensors and may not be reproduced without permission.

© Queen's Printer for Ontario, 2016



409269



# Satellite Photo + Locations



### Legend

- Administration Boundaries**
  - Mining Divisions
  - Resident Geologist District
  - Townships and Areas
  - UTM Grid
  - Geographic Lot Fabric
  - Other Federal Land
- Mineral Tenure Grid**
  - OMTG Tenure Grid
- Alienations**
  - Withdrawal
  - Notice
- Unpatented Claim**
  - Active
  - Reconciled
  - Pending
- Disposition**
  - Disposition
- Disposition Symbols**
  - Camp
  - Disposition Unknown/Pending
  - Freehold Patent Mining Rights Only
  - Freehold Patent Surface Rights Only
  - Freehold Patent Surface and Mining Rights
  - Land Use Permit
  - Leasehold Patent Mining Rights Only
  - Leasehold Patent Surface Rights Only
  - Leasehold Patent Surface and Mining Rights
  - License of Occupation Mining Use Only
  - License of Occupation Surface Use Only
  - License of Occupation Surface and Mining Rights
  - License of Occupation Uses Not Specified
  - Order in Council
  - Tower
  - WPLA
- Geology Layers**
  - AMIS Sites
  - AMIS Features
  - Drill Holes
  - Mineral Occurrences



Projection: Web Mercator

The Ontario Ministry of Northern Development and Mines shall not be liable in any way for the use of, or reliance upon, this map or any information on this map. This map should not be used for: navigation, a plan of survey, routes, nor locations.

© Queen's Printer for Ontario, 2016

Imagery Copyright Notices: Ontario Ministry of Natural Resources and Forestry; NASA Landsat Program; First Base Solutions Inc.; Aéro-Photo (1981) Inc.; DigitalGlobe Inc.; U.S. Geological Survey.

© Copyright for Ontario Parcel data is held by Queen's Printer for Ontario and its licensors and may not be reproduced without permission.



409 269



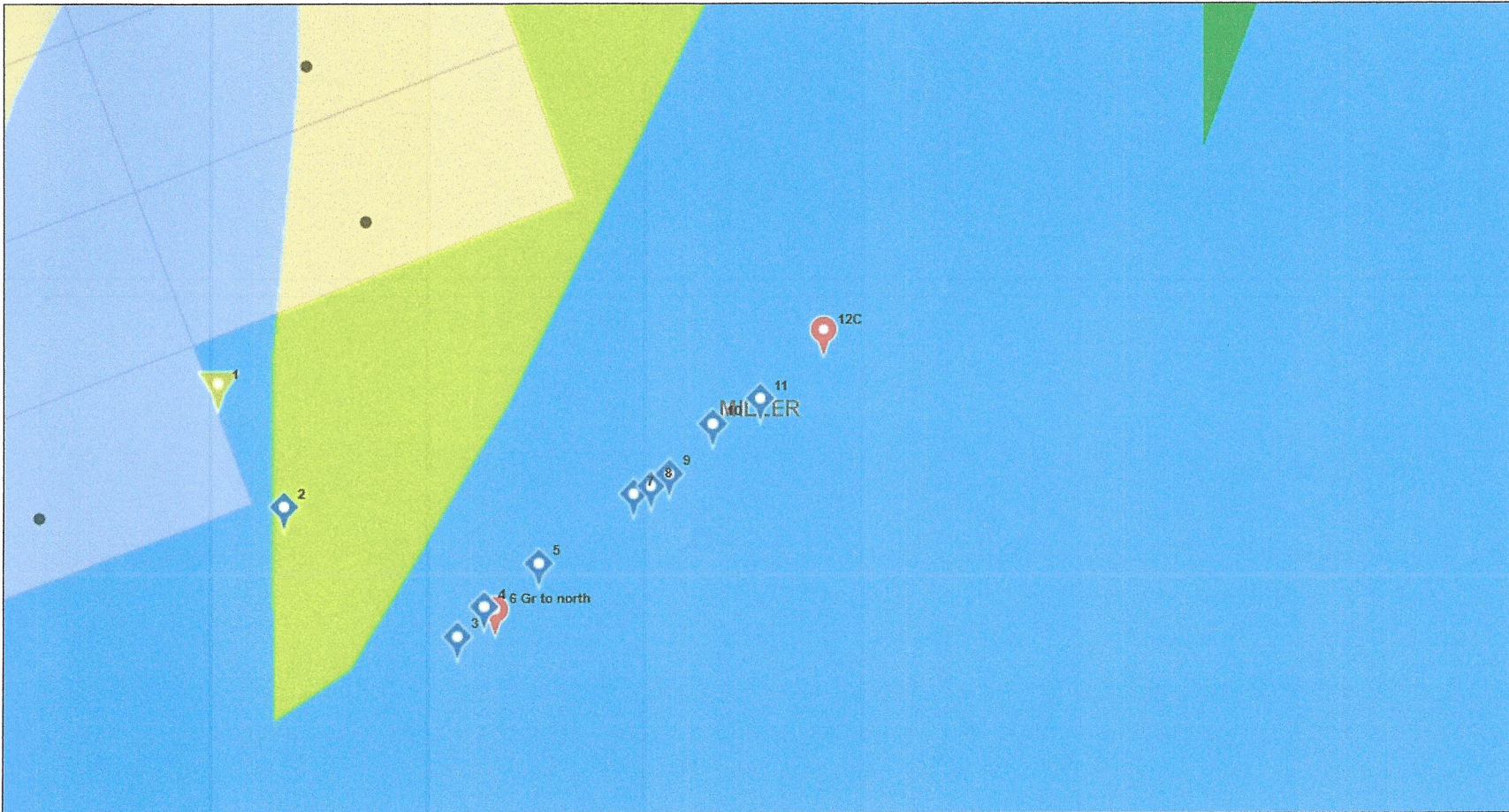
# MNDM Geological Map + Locations

Ontario MINISTRY OF NORTHERN DEVELOPMENT AND MINES  
CLAIMaps

Enter map title

Notes:  
Enter map notes

Trapper Lake Area  
March 30, 2018 Field Work



## Legend

### Administration Boundaries

- Mining Divisions
- Resident Geologist District
- Townships and Areas
- UTM Grid
- Geographic Lot Fabric
- Other Federal Land

### Mineral Tenure Grid

- OMTG Tenure Grid

### Alienations

- Withdrawal
- Notice

### Unpatented Claim

- Active
- Reconciled
- Pending

### Disposition

- Disposition

### Disposition Symbols

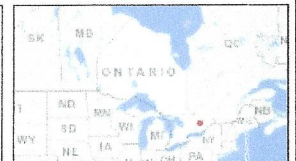
- Camp
- Disposition Unknown/Pending
- Freehold Patent Mining Rights Only
- Freehold Patent Surface Rights Only
- Freehold Patent Surface and Mining Rights
- Land Use Permit
- Leasehold Patent Mining Rights Only
- Leasehold Patent Surface Rights Only
- Leasehold Patent Surface and Mining Rights
- License of Occupation Mining Use Only
- License of Occupation Surface Use Only
- License of Occupation Surface and Mining Rights
- License of Occupation Uses Not Specified
- Order in Council
- Tower
- WPLA

### Geology Layers

- AMIS Sites
- AMIS Features
- Drill Holes
- Mineral Occurrences

0 0.65 km

Projection: Web Mercator



The Ontario Ministry of Northern Development and Mines shall not be liable in any way for the use of, or reliance upon, this map or any information on this map. This map should not be used for: navigation, a plan of survey, routes, nor locations.

Imagery Copyright Notices: Ontario Ministry of Natural Resources and Forestry; NASA Landsat Program; First Base Solutions Inc.; Aéro-Photo (1961) Inc.; DigitalGlobe Inc.; U.S. Geological Survey.

© Copyright for Ontario Parcel data is held by Queen's Printer for Ontario and its licensors and may not be reproduced without permission.

© Queen's Printer for Ontario, 2016

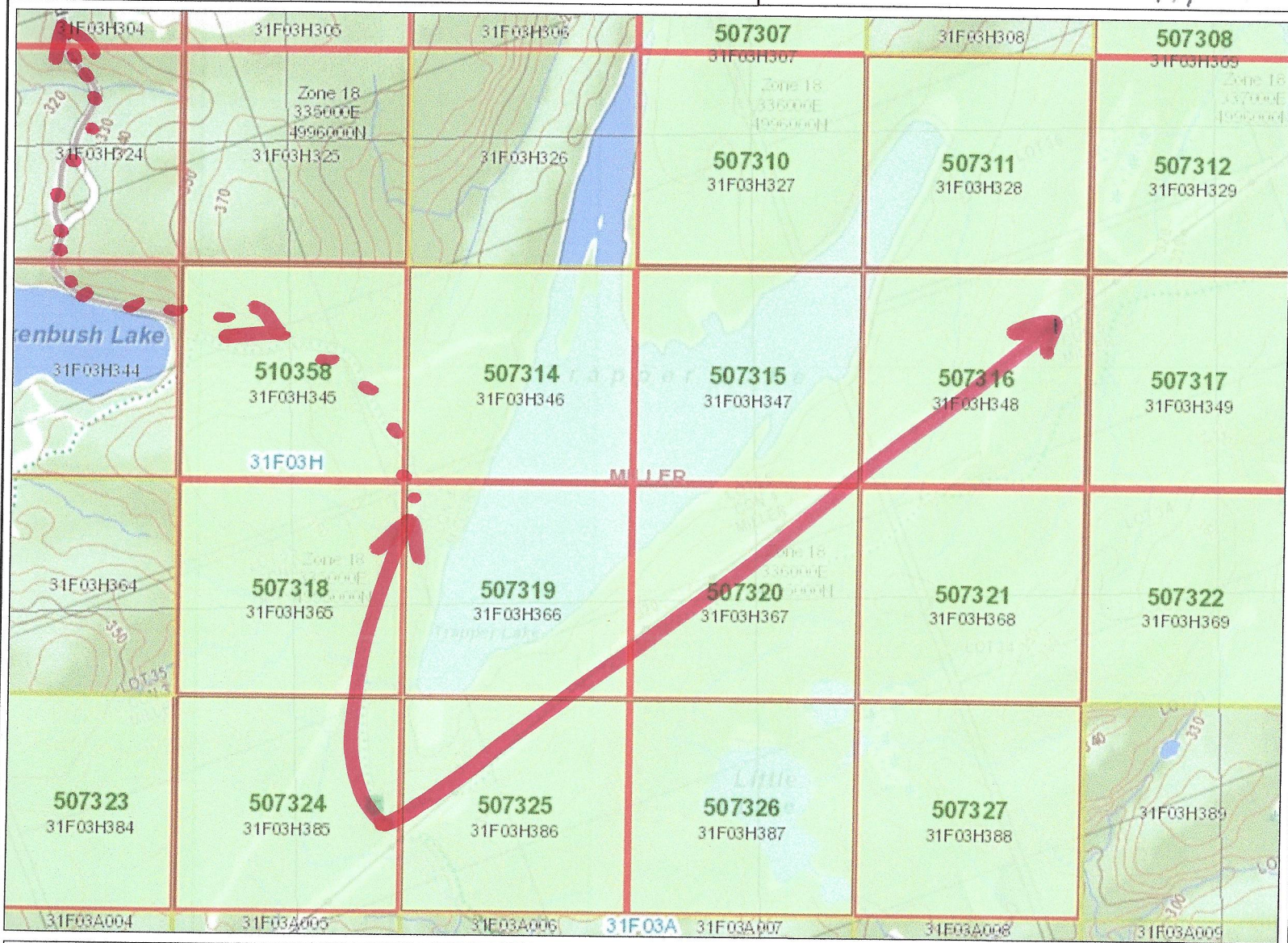
409269



area of traverse - later



Notes: claimed  
April 2018



**Legend**

- Provincial Grid Cell
  - Available
  - Pending
  - Unavailable
- Mining Claim
- Mining Lease
  - Surface Rights Only
  - Mining Rights Only
  - Surface and Mining Rights
- Mining Licence of Occupation
  - Surface Rights Only
  - Mining Rights Only
  - Surface and Mining Rights
- Mining Patent
  - Surface Rights Only
  - Mining Rights Only
  - Surface and Mining Rights
- Mining Division
- MNDM Townships and Areas
- Provincial Grid Group
- Alienation
  - Withdrawal
  - Notice
- UTM Grid Labels 1K
- UTM Grid 1K

409269

409269

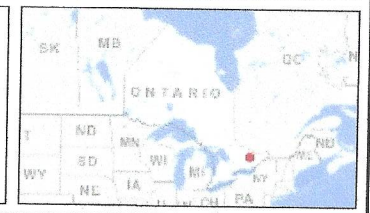


Projection: Web Mercator



The Ontario Ministry of Northern Development and Mines shall not be liable in any way for the use of, or reliance upon, this map or any information on this map. This map should not be used for: navigation, a plan of survey, routes, nor locations.

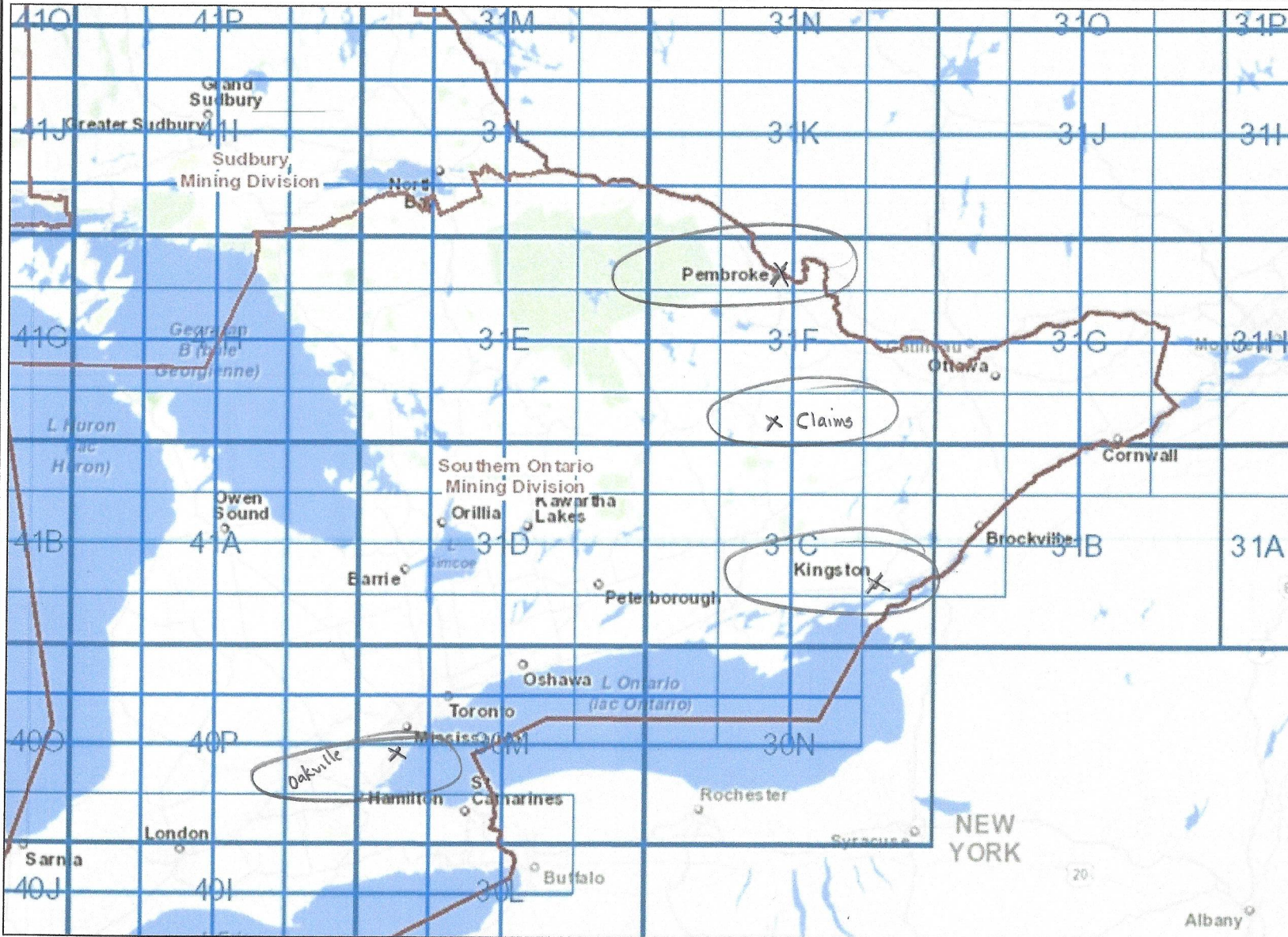
Imagery Copyright Notices: Ontario Ministry of Natural Resources and Forestry; NASA Landsat Program; First Base Solutions Inc.; Aéro-Photo (1961) Inc.; DigitalGlobe Inc.; U.S. Geological Survey.







SE Ontario



- Legend**
- Mining Division
  - Provincial Grid 250K
  - Provincial Grid 50K
  - CLUPA Protected Area - Far North

- Map showing
- Claims
  - Prospectors' Residence
    - Kingston
    - Oakville
  - Algonquin of Ontario meeting place
    - Pembroke
  - Queen's University
    - Kingston



Projection: Web Mercator



The Ontario Ministry of Northern Development and Mines shall not be liable in any way for the use of, or reliance upon, this map or any information on this map. This map should not be used for: navigation, a plan of survey, routes, nor locations.

Imagery Copyright Notices: Ontario Ministry of Natural Resources and Forestry; NASA Landsat Program; First Base Solutions Inc.; Aéro-Photo (1961) Inc.; DigitalGlobe Inc.; U.S. Geological Survey.







Claim Area in SE Ontario



- Legend**
- Mining Division
  - Provincial Grid 250K
  - Provincial Grid 50K
  - CLUPA Protected Area - Far North

61 grid cells  
Claim Area  
31F03

Renfrew County  
Matawatchan  
Township

Frontenac County  
Miller  
Township



Projection: Web Mercator



The Ontario Ministry of Northern Development and Mines shall not be liable in any way for the use of, or reliance upon, this map or any information on this map. This map should not be used for: navigation, a plan of survey, routes, nor locations.

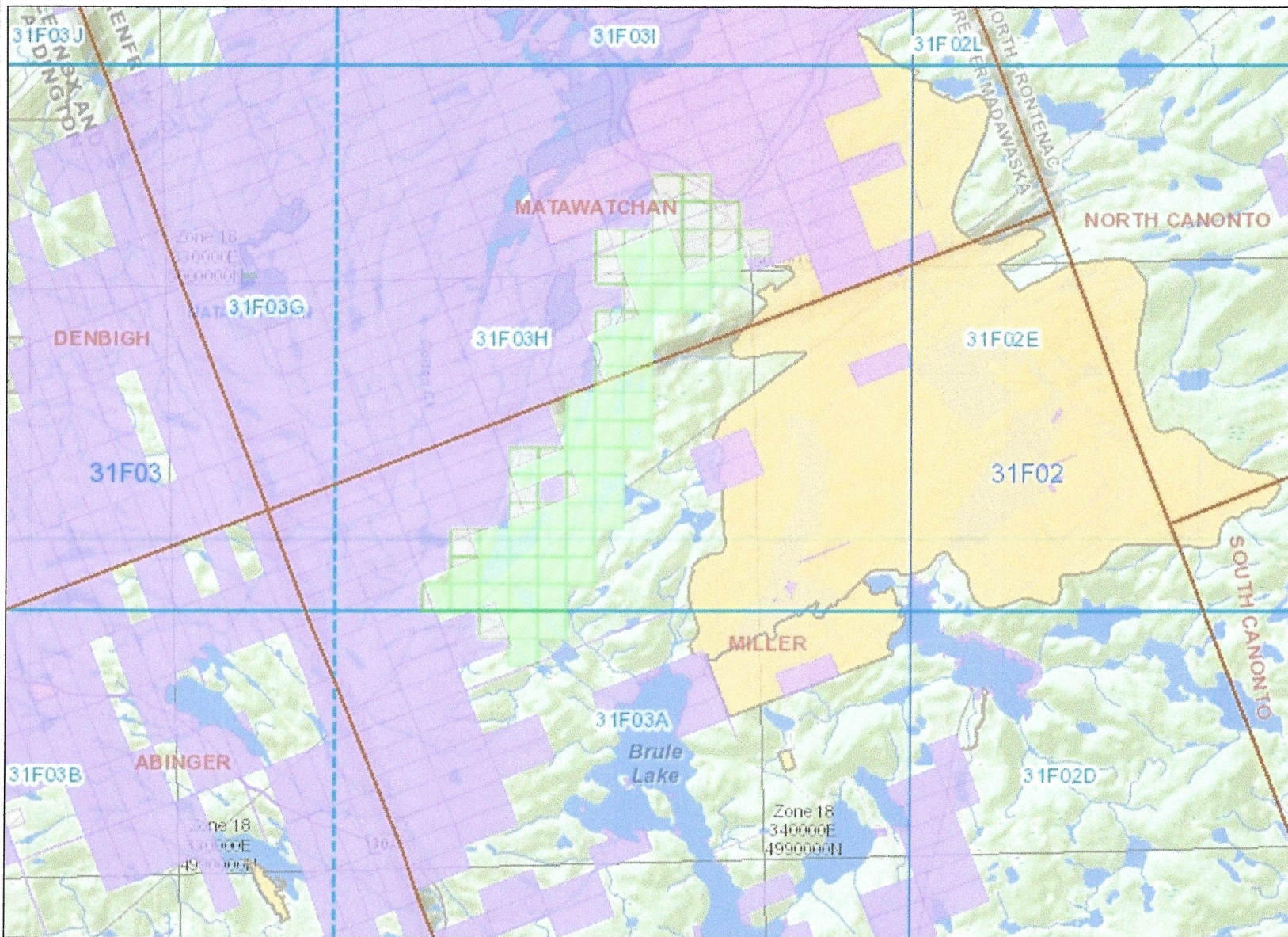
Imagery Copyright Notices: Ontario Ministry of Natural Resources and Forestry; NASA Landsat Program; First Base Solutions Inc.; Aéro-Photo (1961) Inc.; DigitalGlobe Inc.; U.S. Geological Survey.







61 grid cells - contiguous



### Legend

- Mining Claim
- Mining Lease**
  - Surface Rights Only
  - Mining Rights Only
  - Surface and Mining Rights
- Mining Licence of Occupation**
  - Surface Rights Only
  - Mining Rights Only
  - Surface and Mining Rights
- Mining Patent**
  - Surface Rights Only
  - Mining Rights Only
  - Surface and Mining Rights
- Mining Division
- MNDM Townships and Areas
- Provincial Grid 50K
- Provincial Grid Group
- Non-Mining Land Tenure**
  - Patent, Surface Rights Only
  - Patent, Mining Rights Only
  - Patent, Surface and Mining Rights
  - Lease, Surface Rights Only
  - Lease, Mining Rights Only
  - Lease, Surface and Mining Rights
  - Water Power Lease Agreement
  - Licence of Occupation, Surface Rights Only
  - Licence of Occupation, Surface and Mining Rights
  - Order-in-Council
- Alienation**



Projection: Web Mercator



The Ontario Ministry of Northern Development and Mines shall not be liable in any way for the use of, or reliance upon, this map or any information on this map. This map should not be used for: navigation, a plan of survey, routes, nor locations.

Imagery Copyright Notices: Ontario Ministry of Natural Resources and Forestry; NASA Landsat Program; First Base Solutions Inc.; Aéro-Photo (1961) Inc.; DigitalGlobe Inc.; U.S. Geological Survey.





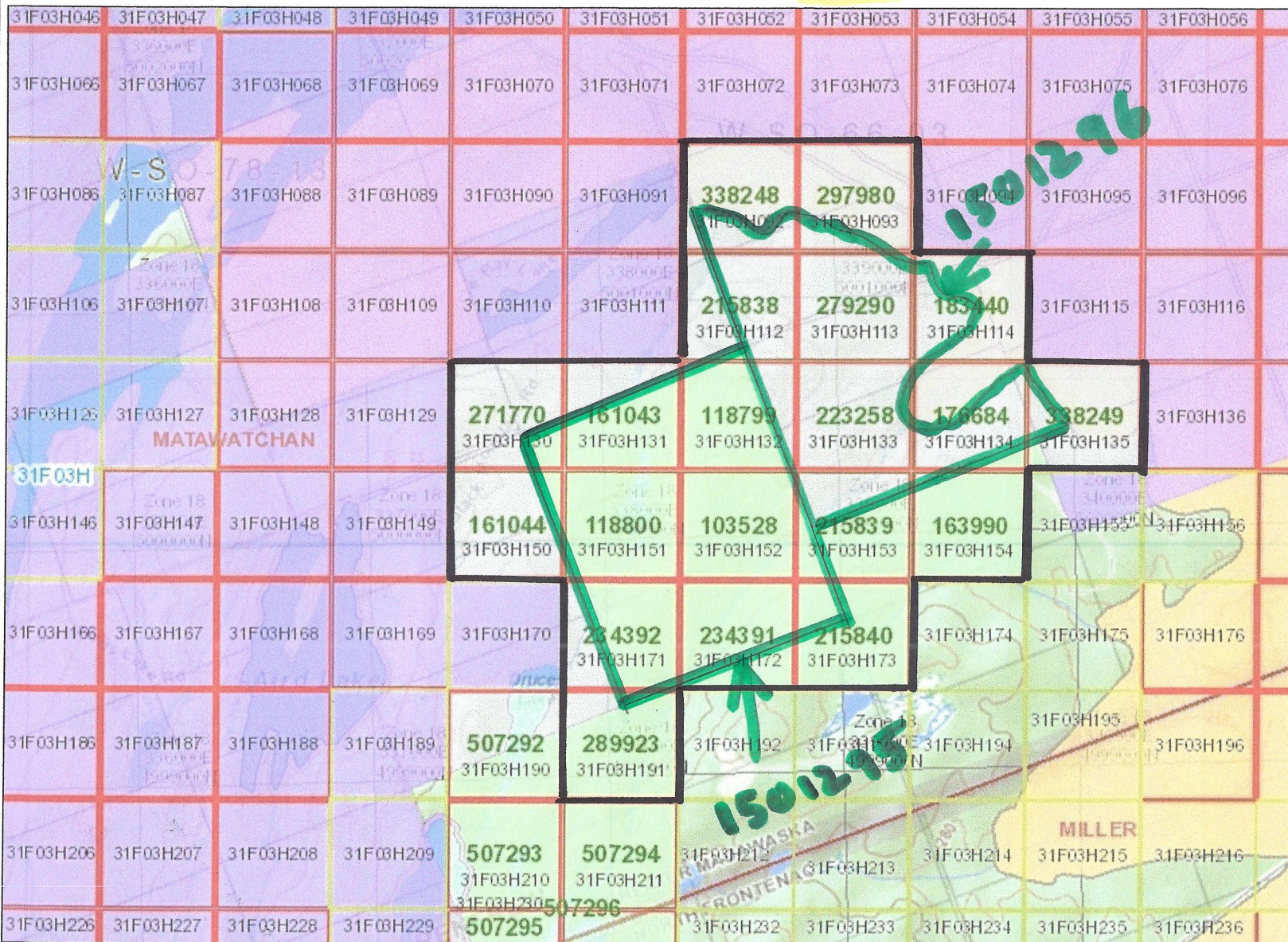


NORTH

MLAS Map

Notes:

Sep 22, 2016  
Legacy Claims 1501295, 6  
20 Gnd Cell Conversion Apr 10, 2018



### Legend

10, 2018

**Provincial Grid Cell**

- Available
- Pending
- Unavailable

**Mining Claim**

**Mining Lease**

- Surface Rights Only
- Mining Rights Only
- Surface and Mining Rights

**Mining Licence of Occupation**

- Surface Rights Only
- Mining Rights Only
- Surface and Mining Rights

**Mining Patent**

- Surface Rights Only
- Mining Rights Only
- Surface and Mining Rights

**Mining Division**

**MNDM Townships and Areas**

**Provincial Grid Group**

**Non-Mining Land Tenure**

- Patent, Surface Rights Only
- Patent, Mining Rights Only
- Patent, Surface and Mining Rights
- Lease, Surface Rights Only
- Lease, Mining Rights Only
- Lease, Surface and Mining Rights
- Water Power Lease Agreement
- Licence of Occupation, Surface Rights Only

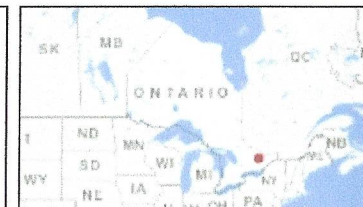


Projection: Web Mercator

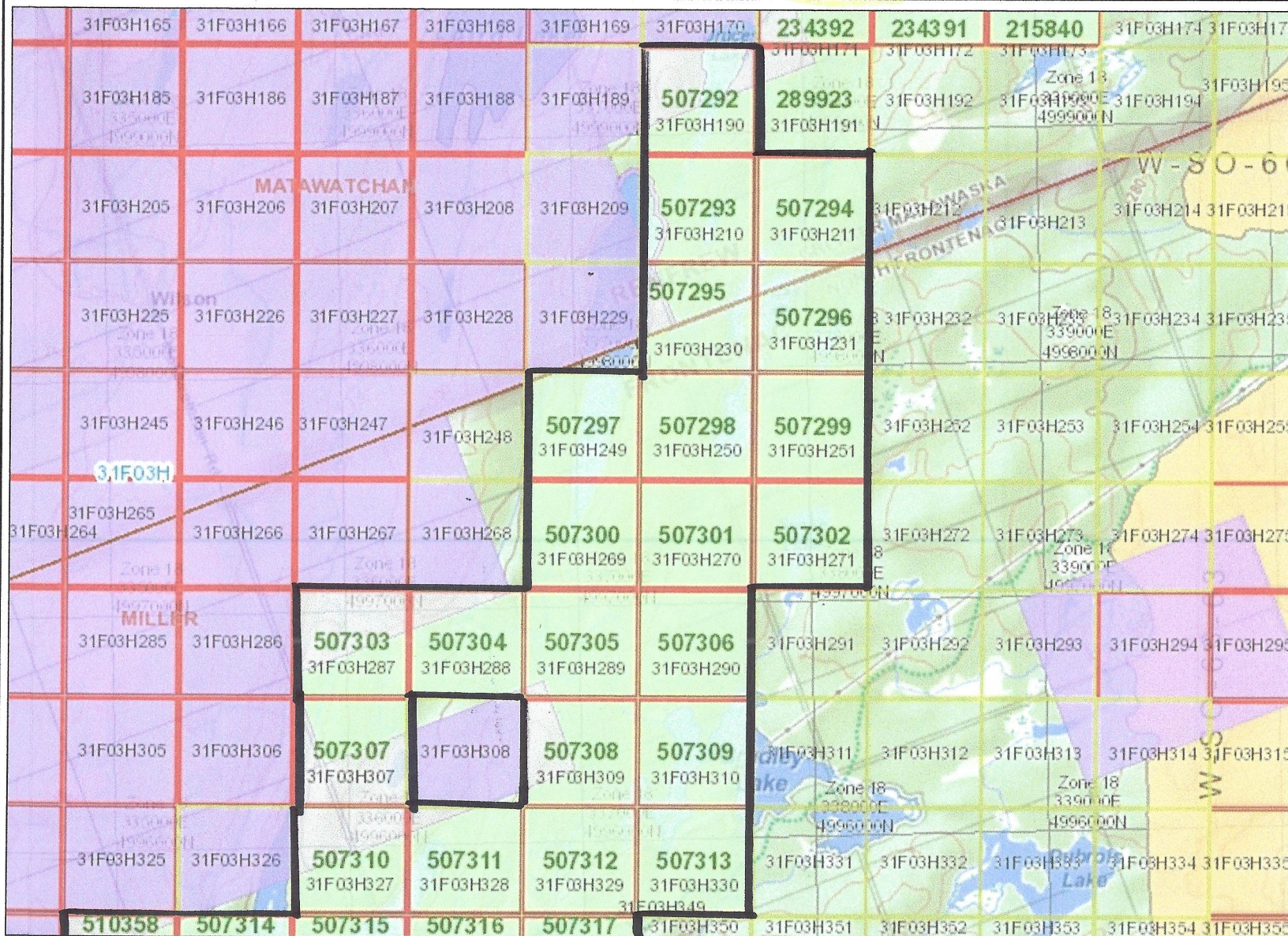


The Ontario Ministry of Northern Development and Mines shall not be liable in any way for the use of, or reliance upon, this map or any information on this map. This map should not be used for: navigation, a plan of survey, routes, nor locations.

Imagery Copyright Notices: Ontario Ministry of Natural Resources and Forestry; NASA Landsat Program; First Base Solutions Inc.; Aéro-Photo (1961) Inc.; DigitalGlobe Inc.; U.S. Geological Survey.







### Legend

**Provincial Grid Cell**

- Available
- Pending
- Unavailable

**Mining Claim**

- Mining Lease
  - Surface Rights Only
  - Mining Rights Only
  - Surface and Mining Rights
- Mining Licence of Occupation
  - Surface Rights Only
  - Mining Rights Only
  - Surface and Mining Rights
- Mining Patent
  - Surface Rights Only
  - Mining Rights Only
  - Surface and Mining Rights

**Mining Division**

- MNDM Townships and Areas

**Provincial Grid Group**

**Non-Mining Land Tenure**

- Patent, Surface Rights Only
- Patent, Mining Rights Only
- Patent, Surface and Mining Right
- Lease, Surface Rights Only
- Lease, Mining Rights Only
- Lease, Surface and Mining Rights
- Water Power Lease Agreement
- Licence of Occupation, Surface Rights Only



Projection: Web Mercator



The Ontario Ministry of Northern Development and Mines shall not be liable in any way for the use of, or reliance upon, this map or any information on this map. This map should not be used for: navigation, a plan of survey, routes, nor locations.

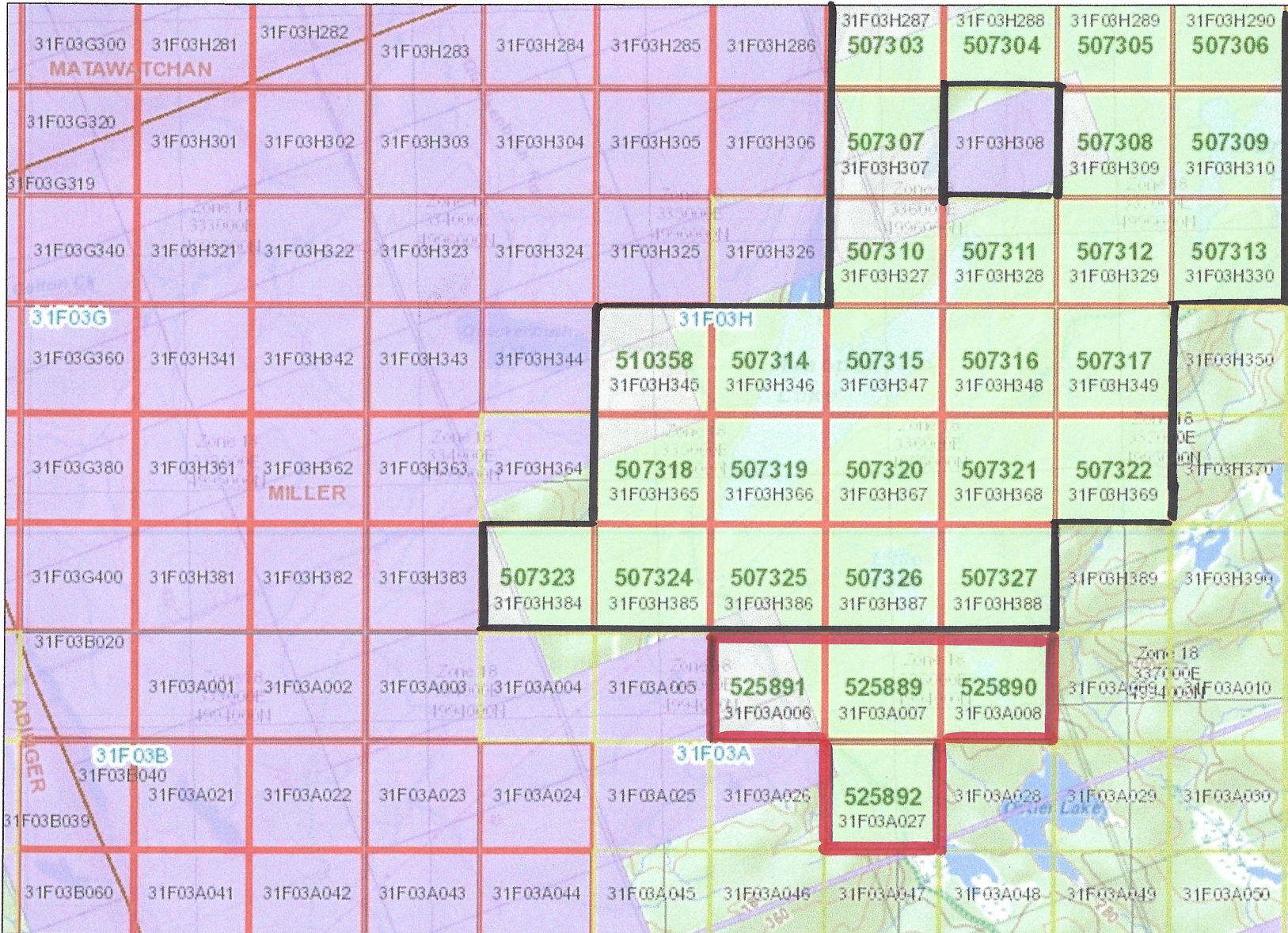
Imagery Copyright Notices: Ontario Ministry of Natural Resources and Forestry; NASA Landsat Program; First Base Solutions Inc.; Aéro-Photo (1961) Inc.; DigitalGlobe Inc.; U.S. Geological Survey.







SOUTH



### Legend

**Provincial Grid Cell**

- Available
- Pending
- Unavailable

**Mining Claim**

- Mining Lease
- Mining Licence of Occupation
- Mining Patent
- Mining Division
- MNDM Townships and Areas
- Provincial Grid Group

**Non-Mining Land Tenure**

- Patent, Surface Rights Only
- Patent, Mining Rights Only
- Patent, Surface and Mining Rights
- Lease, Surface Rights Only
- Lease, Mining Rights Only
- Lease, Surface and Mining Rights
- Water Power Lease Agreement
- Licence of Occupation, Surface Rights Only



Projection: Web Mercator



The Ontario Ministry of Northern Development and Mines shall not be liable in any way for the use of, or reliance upon, this map or any information on this map. This map should not be used for: navigation, a plan of survey, routes, nor locations.

Imagery Copyright Notices: Ontario Ministry of Natural Resources and Forestry; NASA Landsat Program; First Base Solutions Inc.; Aéro-Photo (1961) Inc.; DigitalGlobe Inc.; U.S. Geological Survey.

