

We are committed to providing [accessible customer service](#).

If you need accessible formats or communications supports, please [contact us](#).

Nous tenons à améliorer [l'accessibilité des services à la clientèle](#).

Si vous avez besoin de formats accessibles ou d'aide à la communication, veuillez [nous contacter](#).

ASSESSMENT REPORT FOR A DIAMOND DRILLING
PROGRAM ON THE GENEX PROPERTY,
GODFREY TOWNSHIP
PORCUPINE MINING DIVISION
ONTARIO

PERFORMED FOR
INTERNATIONAL EXPLORERS & PROSECTORS INC.
168 ALGONQUIN BLVD EAST TIMMINS, ONTARIO

January 16,2020

Submitted by Lionel Bonhomme

Table of Contents	Page
1 Summary,	3
2 Description of Property and Access,	3
3 Regional Geology	3
4 Property Geology	4
5 Diamond Drill Program	5
6 Conclusions	5
7 Author's Declaration	6

List of Figures	page
Figure 1. Kamiskotia area general geology with U-Pb zircon ages	7
Figure 2. Regional Geology of KVC and KGC	8
Figure 3. Property Geology with litho geochemistry	9
Figure 4. Kamiskotia Volcanic Cycles	10

Appendix A: Diamond Drill Logs, Plans, Sections

1 SUMMARY:

International Explorers & Prospectors Inc. (IEP) performed a two diamond drill hole program to confirm the length and dip of the “H” cu-au stringer zone in 2020.

NPLH was contracted to perform the work. A water line was extended from Aconda lake for the equipment and sumps were prepared and backfilled to capture the return of water. All the casings and bits will be left and capped.

The drill core was logged at IEP logging facility on Airport road where samples will be cut and shipped for analysis. The core was then stored at the IEP facility on Airport Road.

Two drill holes will be completed for a total of 300 meters drilled in the “H” stringer zone. The present report covers the beginnings of both holes due to mechanical problems with the drilling equipment.

2 DESCRIPTION OF PROPERTY AND ACCESS

The program will be conducted on patented mining claims PAT- 50161 to PAT-50164) inclusive in the township of Godfrey in the Porcupine Mining Division as per the attached Location map. The Genex property is located 15 km north of the City of Timmins Ontario on the paved Kamkotia Road. The claim group can be accessed by driving west opposite the Ski Hill entrance for a distance of 4 km on a logging road that also serves as part of the skidoo and recreational vehicle network with all season pick-up trucks and cars. IEP is the holder of all rights in fee simple. The property consists of Patented Mining Claims with Absolute title. It does not require Plans and permits to be issued by MNDM for exploration activities. IEP has reached a Memorandum of Understanding (M.O.U.) agreement with the Wabun Tribal council to be signed with the Mattagami First Nation and Flying Post First Nation.

3 REGIONAL GEOLOGY:

The Genex property is located in the South West portion of the Abitibi Greenstone Belt (AGB). The Kamiskotia Volcanic Complex (KVC) consist of an extensive bimodal sequence of tholeiitic basalts and high silica rhyolites located 20 km northwest of Timmins in the AGB. (Ayer J Hamilton M., 2016 and figure 1)

The KVC is part of the Blake-River assemblage the youngest volcanic dominated assemblage within the AGB with ages ranging from 2704 to 2697 Ma. (Ayer et al 2002, 2005) extending

over a strike length of 25 km. The KVC represents the second largest accumulation of rhyolites in the AGB following the Mattagami mining camp (50 km).

4 PROPERTY GEOLOGY:

A sample collected from the rhyolite of the Genex property in 2005 returned a date of 2698 and is similar to the large Au rich VMS deposits of the Bousquet formation including Laronde-Penna, Bousquet formed between 2698-2697 Ma (Dube, Langevin, Mercier et al).

The Genex property is underlain by volcanic rock of the KVC. The Kamiskotia Gabbroic Complex (KGB) has intruded into the KVC and provided the heat engine to the hydrothermal system that generated the VMS deposit on the property. (IEP 2016 Figure 2)

Mapping by previous companies and the OGS indicates that the local volcanic stratigraphy includes mafic, andesitic and rhyolitic rocks. A few late, barren mafic dykes cross the property. Felsic intrusives lie < 1 km west of Genex but are undated. (Legault private reports to Falconbridge, Master's thesis Carleton) (Hogg, Resident Geologist)

Although the stratigraphy has been inferred to strike N-S, there is evidence for cross cutting faults and possibly an E-W fold in the mineralized area (Keevil N B). IEP is therefore using historic and new lithogeochemical data to better define and correlate the volcanic units, and to reassess the structural picture (Barrett T may 2018 figure 3).

Polymetallic sulfide mineralisation occurs as stringers, semi-massive and massive patches and disseminations. This is most common in the andesitic unit, but also occurs in the mafic and felsic volcanics.

The sulphides have similarities to feeder zones associated with VMS deposits, but their orientation and extent have yet to be defined, apart from the main historic drift which followed an E-W Cu-rich sulphide zone. Although it is not known if this was a discordant feeder or a concordant semi-massive sulfide horizon.

5 DIAMOND DRILL PROGRAM AND RESULTS:

Two diamond drill hole totalling over 300 m will be drilled .The drill holes are targeting the down plunge and dip of the "H" zone below the workings and across the length. As defined in 2017.

Summary statistics for diamond drill hole IG-18-21 and IG20-22

Hole ID	UTM east	UTM north	Azimuth	Dip	Length m	start	finish
IG-20-21	458828	5370134	281	-57	111m	January 15/20	January 16/20
IG-20-22	458706	5370092	44	-47	in progress	January13/20	tbd *

The hole IG-20-21 confirmed the presence of felsic volcanics, a mixed fragment, a chloritized rhyolite with associated stringers.

Drill-hole IG-20-22 collared in felsic volcanics with the drill breaking down @ 16 m. The machine is being moved from hole IG-20-21 to complete the drilling on January 16, 2020.

6. CONCLUSIONS

The 2020 program was successful in confirming with hole 21 a better understanding of the "H" stinger cu-au zone and associated zn-py-au zone having encountered 3 mineralised zones . The diamond drill hole IG 20-22 will provide a complete section below the workings to determine a 3D platform on the extent as the hole was planned to encounter the zones below the workings and the first test on the down plunge. Based on visual examination of the first holes the stringer zone and the Zn zone appear to be larger than previously estimated.

The project has been tested near surface and remains open with VTEM anomaly to a depth untested > 450 m .The near surface grades would be economic for open pit.

In reviewing the historical data a geomagnetic survey by N.B. Keevil had identified a fault zone that after the recent programs have been confirmed as being controls on mineralisation. A geology map prepared in 1946 identifies a mineralised trend for 4,800 feet based on 5 drill holes recorded with azimuth of south west direction assumed on mag modeling. The presence of a spotted dog unit identified in 1942 for the Peter Bell Copper Mining syndicate has yielded some cordierite alteration as confirmed by F. Breaks Petrographic report.

A report by Nelson Hogg and Stewart Ferguson 1951 to 1954 recorded 35 mineralised trenches IEP has inspected these trenches and confirmed the accuracy of the work.

A detailed program of validating the work is being planned by the company on the property with an experienced operator. The 2020 program was planned to attract an operator.

A cursory review of gold assays > 1g/t Au over combined Cu-Zn-Pb from 88 samples identified from 4 previous programs has shown that over 60% of the samples have more gold in g/t Au than base metal in % suggesting an indicator of a gold vms system. These samples are mainly located above 150 meters Vertical.

A recent report by Ayer Hamilton was filed to better define the contacts within the Blake River assemblage and Kidd-Monro assemblage.

7. Author's Certificate

I Lionel Bonhomme do declare that:

I reside at 643 Pine St North Timmins, Ontario P4N 6M2

I hold a valid Prospectors license

I hold a client number with MNDM

I am a member of the Porcupine and Sudbury Prospectors Group

I am a life member of Prospectors & Developers Association of Canada

I am a member of the Geological Association of Canada

I have been active in mineral exploration and worked in the industry since 1964

I am the president of International Explorers & Prospectors Inc.

I have managed the exploration program in this report.

Lionel Bonhomme

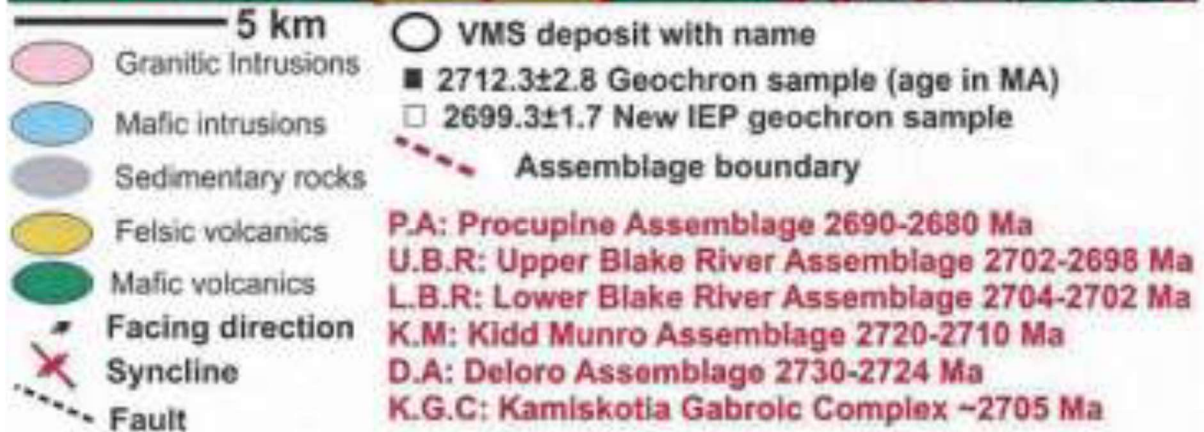
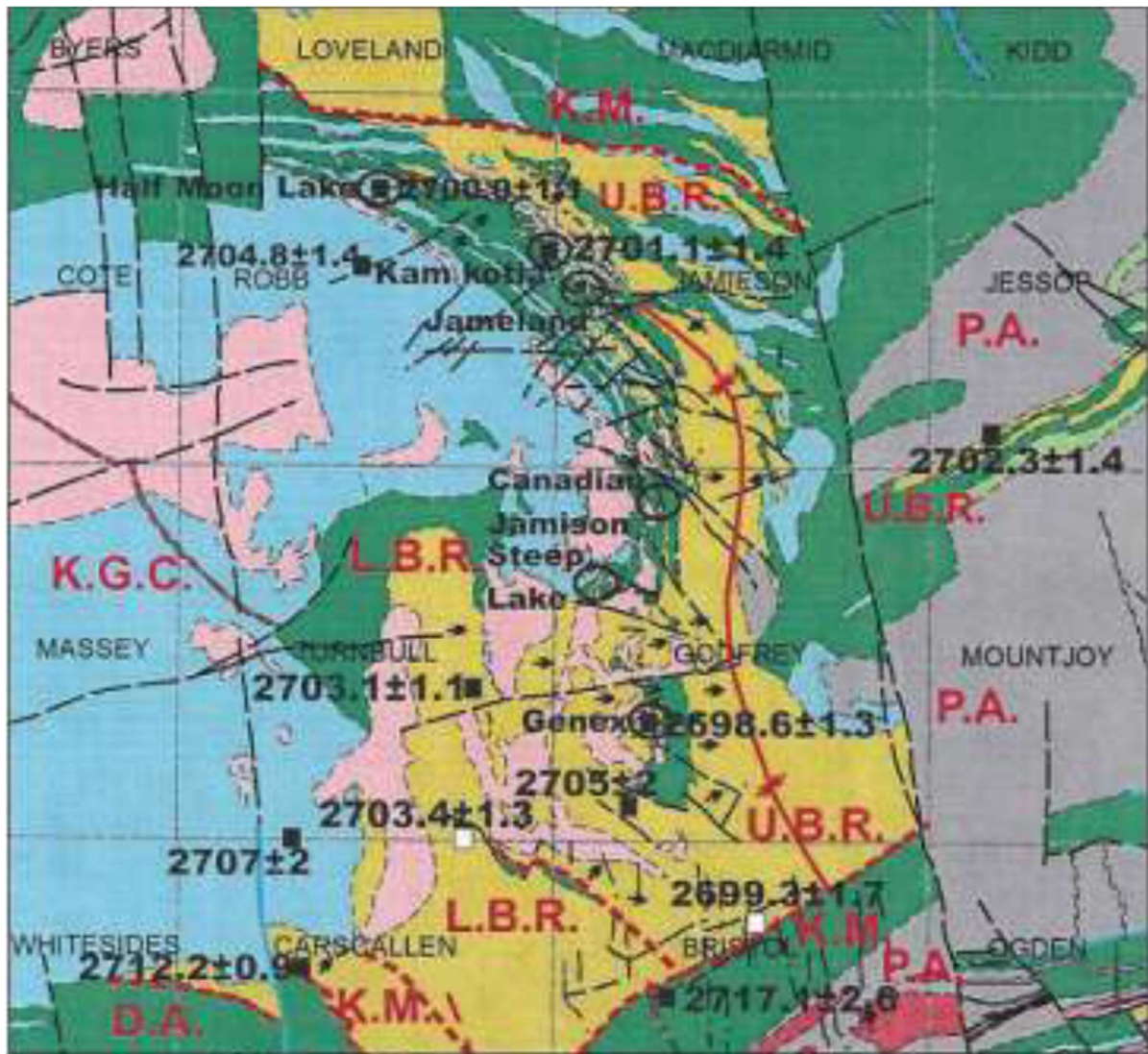
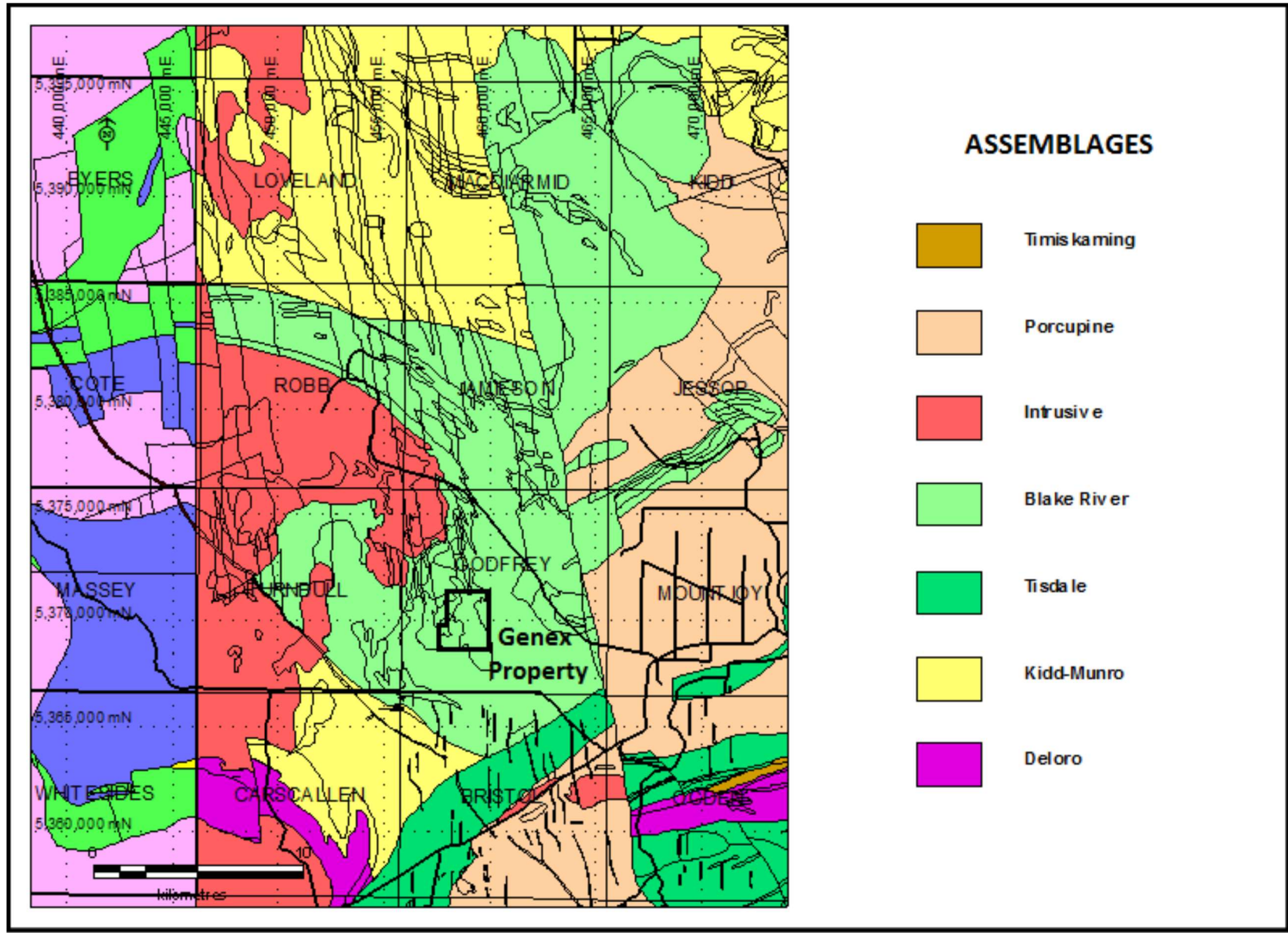
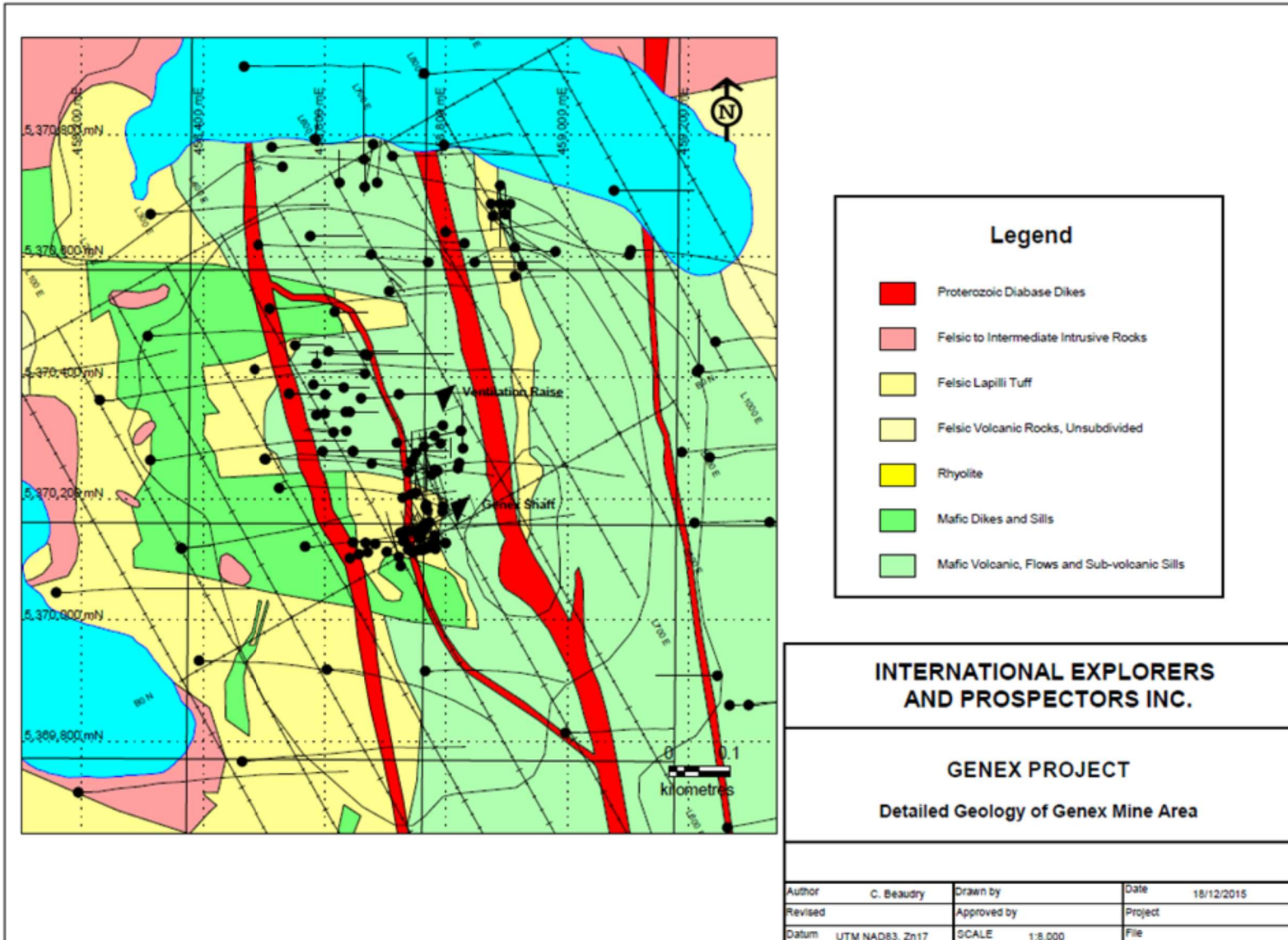
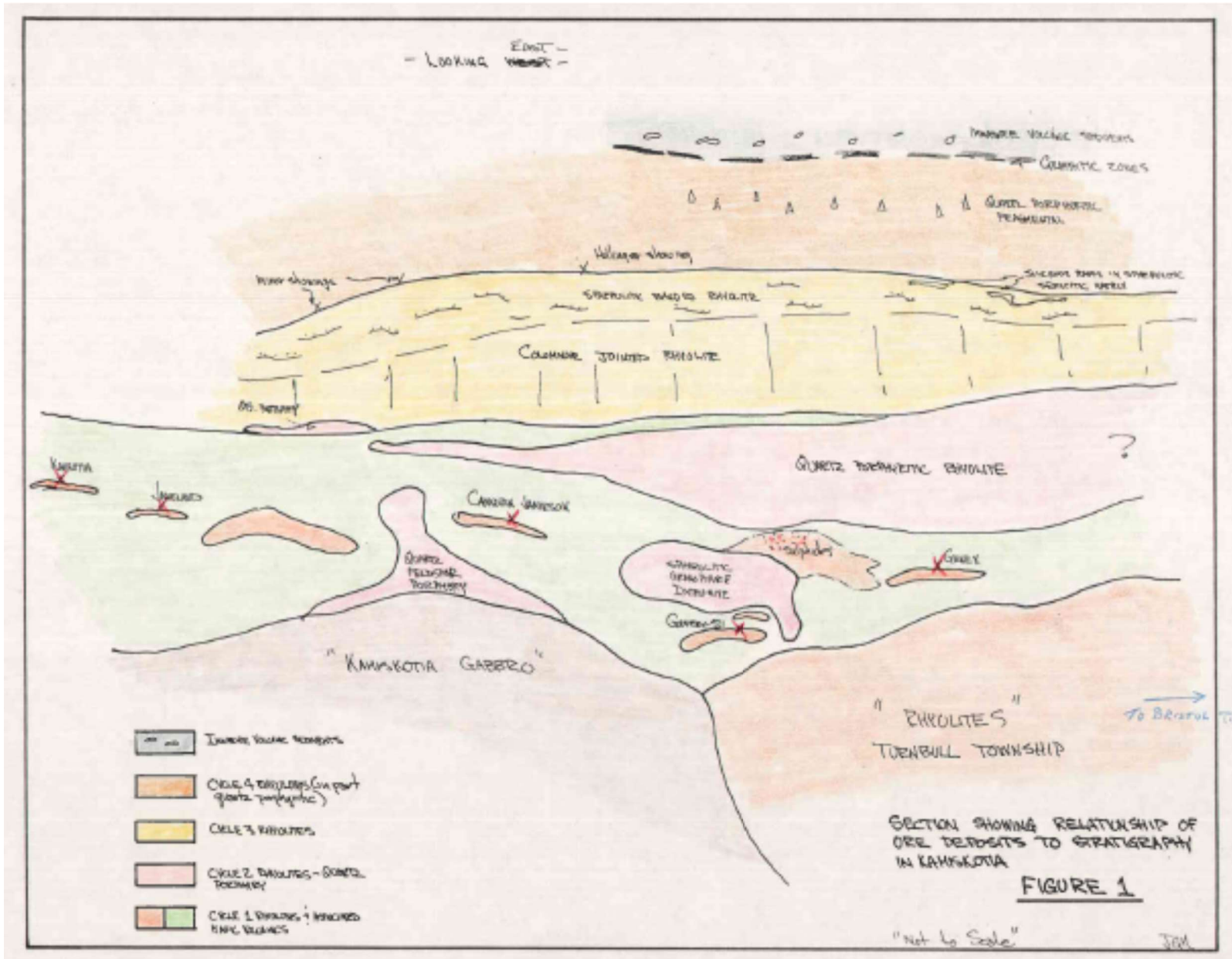




Figure 1. Kamiskotia area general geology with U-Pb zircon ages in MA VMS deposit locations and assemblage boundaries.

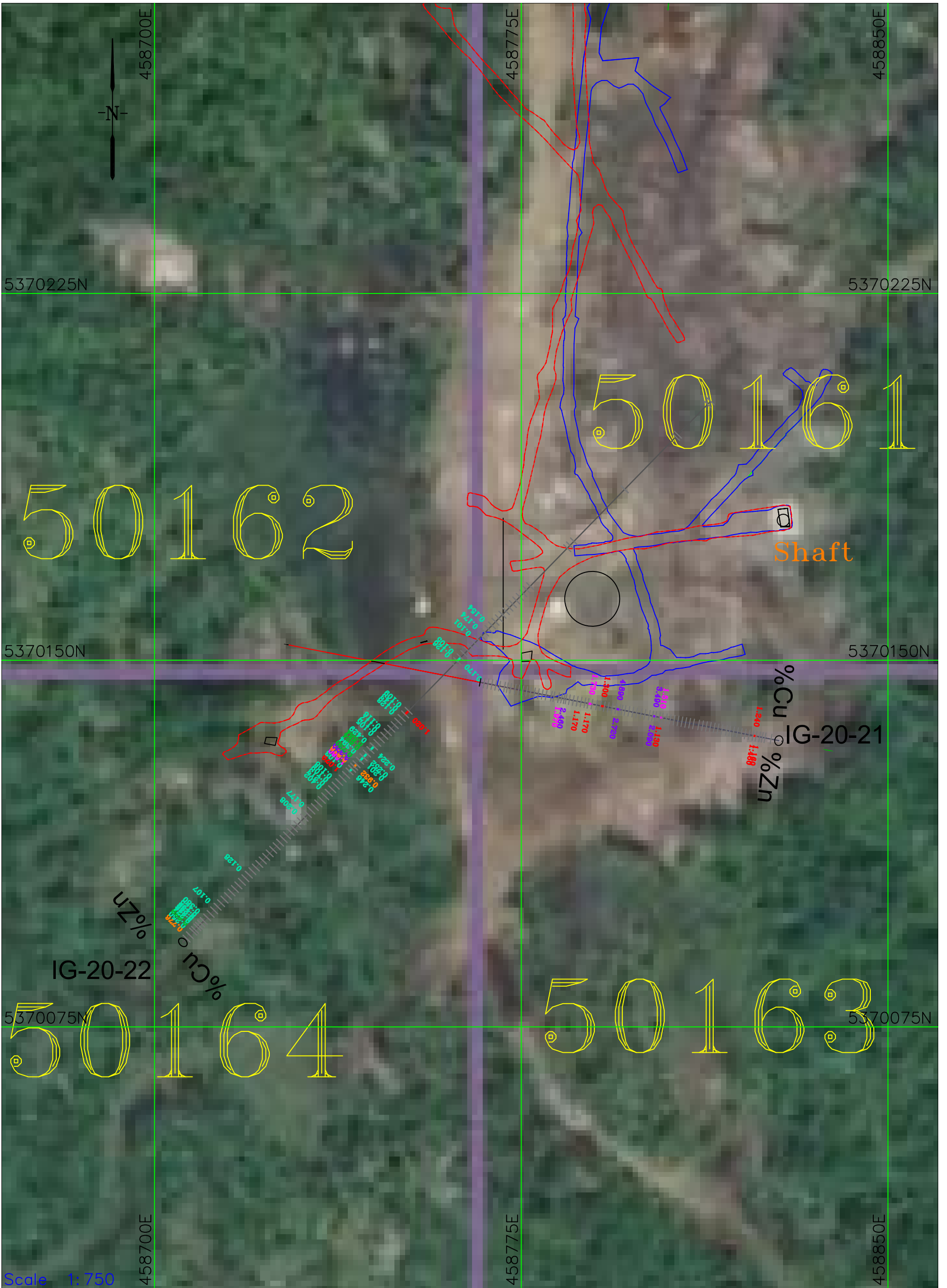




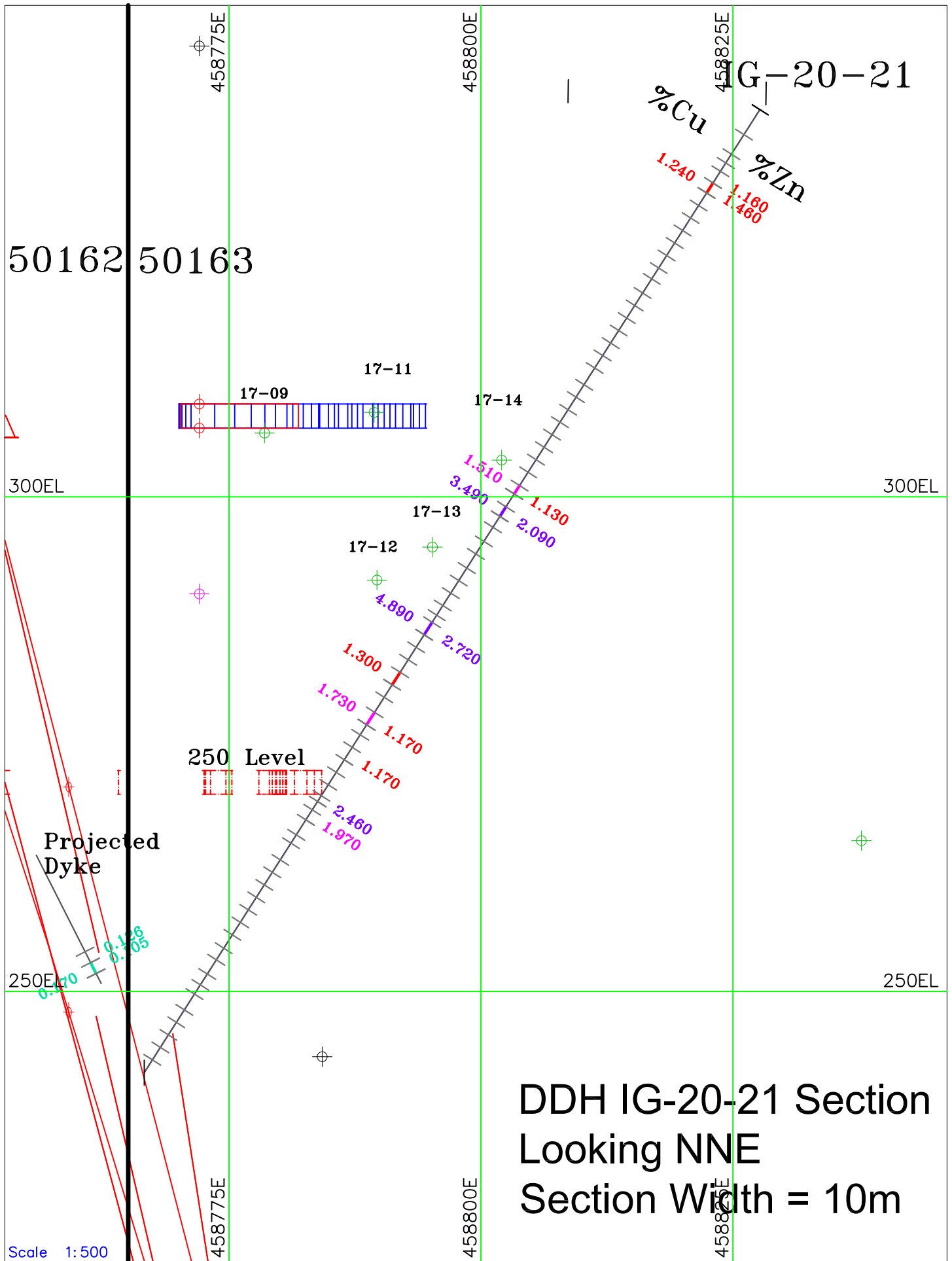


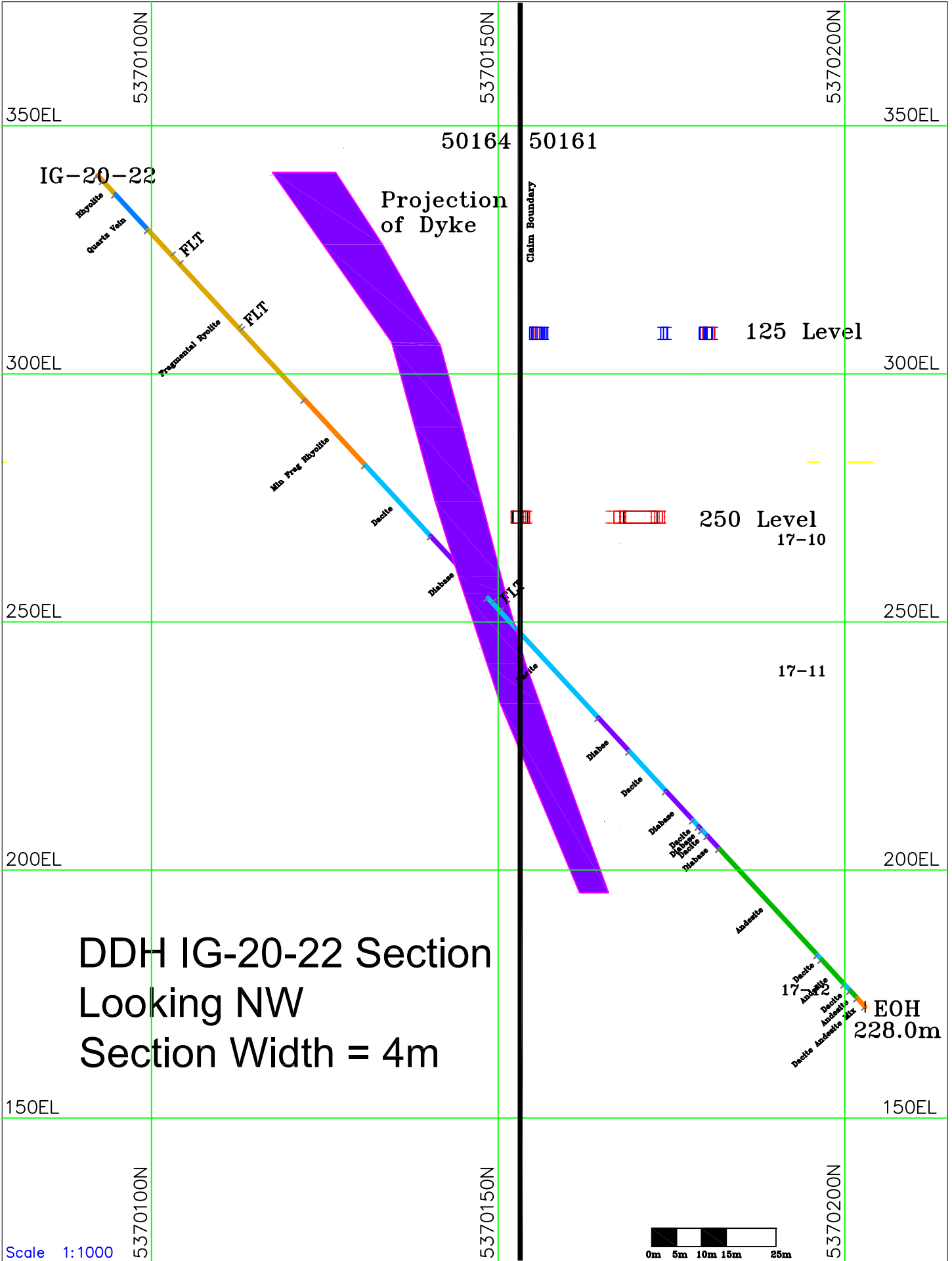
Drillhole ID: IG-20-21		Claim No. PAT-50163		End of Hole: 27 meters	Azimuth: 27 degrees Dip: -57 degrees	Orientation Tests: (azimuth / dip) Test Type: Reflex		Page 1 of 4		
Drill Log For: International Explorers and Prospectors Inc.		Township Godfrey		Core Size: NQ (47.75mm)		Depth	Azimuth / Dip	Magnetic field		
Drilling Contractor: NPLH Drilling		Date Hole Started:	2020-01-15	Casing Length: 3 m Pulled: Yes / No		/				
UTM NAD 83 zone 17		Date Completed:	2020-01-16	Logged by: Lionel Bonhomme		/				
Collar Easting: 458828		Collar Easting (Grid):		Signature: 		/				
Collar Northing: 5370134		Collar Northing (Grid):		Date Logged: 2020/01/15 to 2020/01/16		/				
Meterage		Rock Type	Description Colour, Grain Size, Texture, Minerals, Alteration, etc.	Pyrite %	Sample Intervals		Sample Length	Sample No.	Assays	
From	To				From	To				
0	3	Overburdon	casing to 3 meters							
3	27.39	Rhyolite	Grey rhyolite fragmental							
			3 - 4.36 Limonite staining with bands and blebs of Sph/Cpy							
			4.36 - 6.45 Dark Grey Rhyolite							
			6.7 - 7.5 various fragments containing 2% Sph with cpy							
			7.5 - 9.0 felsic fragments contain qtz eyes Bleaches with sulphides in fragments and around, locally up to 2cm massive brown sph							
			9.0 - 10.0 2 -3% sph to 9.45, then a dk grey patch with 5% cpy							
			10.0 - 11.0 2% cpy							
			13.0 - 14.0 3% brown Sph including blebs of massive 1-2cm in size where the core in darker grey							
			14.0 - 15.0 3% sph							
			18.0 - 19.05 dark grey block, 4% sph, 1% cpy							
			20.35 - 22.0 5% sph - 1% cpy							
			22.0 - 22.3 5% sph - 1% cpy							
			25.0 - 26.0 3% sph							
			26.0 - 27.39 3% sph							
			sharp contact at 45 deg tca with next unit							
			hole to continue							

Drillhole ID: IG-20-22		Claim No. PAT-50164		End of Hole: 15 meters	Azimuth: 44 degrees Dip: -47 degrees	Orientation Tests: (azimuth / dip) Test Type: Reflex		Page 1 of 4		
Drill Log For: International Explorers and Prospectors Inc.		Township Godfrey		Core Size: NQ (47.75mm)		Depth	Azimuth / Dip	Magnetic field		
Drilling Contractor: NPLH Drilling		Date Hole Started:	2020-01-13	Casing Length: 3 m Pulled: Yes / No		/				
UTM NAD 83 zone 17		Date Completed:	2020-01-16	Logged by: Lionel Bonhomme		/				
Collar Easting: 458706		Collar Easting (Grid):		Signature: 		/				
Collar Northing: 5370092		Collar Northing (Grid):		Date Logged: 2020/01/15 to 2020/01/16		/				
Meterage		Rock Type	Description Colour, Grain Size, Texture, Minerals, Alteration, etc.	Pyrite %	Sample Intervals		Sample Length	Sample No.	Assays	
From	To				From	To				
0	1.6	Overburden	casing to 3 meters							
1.6	5.27	Rhyolite	Pale grey Rhyolite with cerucite alteration sulphides average 5% Py/Sph (some pale brown Sph) to 3 meters At 3 meters the rock turns medium darker grey with 1% py and liminite from 3.53 there are small red bubbles for 10 cm turning clear to 5.23 at 3.52 meters rock is dark grey with few sulphides							
5.27	12.9	quartz stockwork	dark chlorite altered stockwork (rhyolite with veining and sulphides) 5.27 - 6.27 3% Py, 1% cpy, 1% sph 6.27 - 7.27 3% Py, 1% cpy, 1% sph 7.25 - 8.5 2% Py, tr cpy/shp 8.5 - 9.24 1% Py locally 12 - 12.9 3% Py, tr cpy/sph							
13	15	Rhyolite	Felsic fragmental, 3 - 5 cm in size with some lapilli some pink fragments stretched 5mm to 1.5cm 2-3% sulphides mainly Py with liminite rounded liminite spots from 15 - 15.5 meters hole continuing							



Genex DDH Plan
IG-20-21 and IG-20-22





350EL

5370100N

50164

50161

5370150N

5370200N

350EL

IG-20-22

Basaltic Andesite

Quartz Tuff

FLT

Trachyandesite

FLT

Min Frag Basaltic Andesite

Diabase

Diabase

Diabase

Diabase

Diabase

Diabase

Diabase

Diabase

Diabase

Andesite

17-10

17-11

125 Level

250 Level 17-10

250EL

200EL

200EL

150EL

150EL

5370100N

5370150N

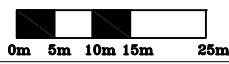
5370200N

Claim Boundary

EOH 228.0m

DDH IG-20-22 Section
Looking NW
Section Width = 4m

Scale 1:1000



Drilled on PAT-50164, PAT-50163

Due to time constraints invoices will be submitted after the filing

Total program costs	5,094
Total meters in program	42.0
Program cost per meter	<u>121.29</u>

Total meters in program	42.0
Total drilling cost for program	<u>3,169</u>
Drilling cost per meter	<u>75.45</u>

Personel costs per meter 45.83

Core shack costs per meter 0.00

overburden	ovb m	\$ cost /m	\$ amount	
IG20-21		3	71	213
IG20-22		3	71	213
	<u>6</u>		Total	426

Coring	meters	\$ cost /m	\$ amount	
IG20-21		24	69	1,656
IG20-22		12	69	828
	<u>36</u>		Total	2,484

reflex tests	# tests	\$ cost /test	\$ amount	
IG20-21		0	85	0
IG20-22		0	85	0
	<u>0</u>		Total	0

Casing left in hole	#	\$ cost /3m	\$ amount	
IG20-21		0	157	0
IG20-22		1	157	157
IG20-21		1	102	102
	<u>1</u>		Total	259

OV bits left in hole	#	\$ cost /piece	\$ amount	
IG20-21			566	0
IG20-22			566	0
	<u>0</u>		Total	0

moving	hours	\$ cost /hr	\$ amount	
IG20-21		0	150	0
IG20-22		0	150	0
			Total	0

hourly time	hours	\$ cost /hr	\$ amount	
IG20-21		0	220	0
IG20-22		0	220	0
			Total	0

Other drilling costs	@/unit	\$ amount	
Reflex rental			
Reflex insurance			
Core trays	8.1		
mud			
propane			
Mobilization			
Dozer \$/hr	150		
Transport \$/hr	150		
			Total
			0

Personel costs				
Lionel Bonhomme	2 days @	500 per day	1,000	
Scott Woolhead	15 hours @	35 per hour	525	
Peter Colbert	1 days @	400 per day	400	
			Total personel cost	1,925

Core shack rental				
574395 Ont Inc	500 per week		0	
			Total	0

drill program breakdown for filings for PAT-50164, PAT-50163

	meters drilled	drilling cost	personal	core shack	total
IG20-21	27	2,037	1,238	0	3,275
IG20-22	15	1,132	688	0	1,819
	42	3,169	1,925	0	5,094