

We are committed to providing [accessible customer service](#).

If you need accessible formats or communications supports, please [contact us](#).

Nous tenons à améliorer [l'accessibilité des services à la clientèle](#).

Si vous avez besoin de formats accessibles ou d'aide à la communication, veuillez [nous contacter](#).

ASSESSMENT REPORT FOR A DIAMOND DRILLING
PROGRAM ON THE GENEX PROPERTY,
GODFREY TOWNSHIP
PORCUPINE MINING DIVISION
ONTARIO

PERFORMED FOR
INTERNATIONAL EXPLORERS & PROSECTORS INC.
168 ALGONQUIN BLVD EAST TIMMINS, ONTARIO

Revised May 7, 2020

February 10, 2020

Submitted by Lionel Bonhomme

Table of Contents	page #
1 Summary,	3
2 Description of Property and Access,	3
3 Regional Geology	3
4 Property Geology	4
5 Diamond Drill Program	4
6 Conclusions	5
7 Author's Declaration	6

Tables

Assay Table IG 20-21	7
----------------------	---

List of Figures

Figure 1. Kamiskotia area general geology with U-Pb zircon ages	9
Figure 2. Regional Geology of KVC and KGC	10
Figure 3. Property Geology with lithogeochemistry	11
Figure 4. Kamiskotia Volcanic Cycles	12

Appendix A: Diamond Drill Logs, Plans, Sections

1 SUMMARY:

International Explorers & Prospectors Inc. (IEP) performed a two diamond drill hole program to confirm the length and dip of the “H” cu-au stringer zone in 2020.

NPLH was contracted to perform the work. A water line was extended from Aconda lake for the equipment and sumps were prepared and backfilled to capture the return of water. All the casings and bits will be left and capped.

The drill core was logged at IEP logging facility on Airport road. The samples were cut and shipped for analysis at the Polk core facility. The core was then stored at the IEP facility on Airport Road.

Two drill holes were for a total of 341 meters drilled between the “H” stringer zone. This report covers hole 21

2 DESCRIPTION OF PROPERTY AND ACCESS

The program will be conducted on patented mining claims PAT- 50161 to PAT-50164) inclusive in the township of Godfrey in the Porcupine Mining Division as per the attached Location map. The Genex property is located 15 km north of the City of Timmins Ontario on the paved Kamkotia Road. The claim group can be accessed by driving west opposite the Ski Hill entrance for a distance of 4 km on a logging road that also serves as part of the skidoo and recreational vehicle network with all season pick-up trucks and cars. IEP is the holder of all rights in fee simple. The property consists of Patented Mining Claims with Absolute title. It does not require Plans and permits to be issued by MNM for exploration activities. IEP has reached a Memorandum of Understanding (M.O.U.) agreement with the Wabun Tribal council to be signed with the Mattagami First Nation and Flying Post First Nation.

3 REGIONAL GEOLOGY:

The Genex property is located in the South West portion of the Abitibi Greenstone Belt (AGB). The Kamiskotia Volcanic Complex (KVC) consist of an extensive bimodal sequence of tholeiitic basalts and high silica rhyolites located 20 km northwest of Timmins in the AGB. (Ayer J Hamilton M., 2016 and figure 1)

The KVC is part of the Blake-River assemblage the youngest volcanic dominated assemblage within the AGB with ages ranging from 2704 to 2697 Ma. (Ayer et al 2002, 2005) extending over a strike length of 25 km. The KVC represents the second largest accumulation of rhyolites in the AGB following the Mattagami mining camp (50 km).

4 PROPERTY GEOLOGY:

A sample collected from the rhyolite of the Genex property in 2005 returned a date of 2698 and is similar to the large Au rich VMS deposits of the Bousquet formation including Laronde-Penna, Bousquet formed between 2698-2697 Ma. (Dube, Langevin, Mercier et al).

The Genex property is underlain by volcanic rock of the KVC. The Kamiskotia Gabbroic Complex (KGB) has intruded into the KVC and provided the heat engine to the hydrothermal system that generated the VMS deposit on the property. (IEP 2016 Figure 2)

Mapping by previous companies and the OGS indicates that the local volcanic stratigraphy includes mafic, andesitic and rhyolitic rocks. A few late, barren mafic dykes cross the property. Felsic intrusives lie < 1 km west of Genex but are undated. (Legault private reports to Falconbridge, Master's thesis Carleton) (Hogg, Resident Geologist)

Although the stratigraphy has been inferred to strike N-S, there is evidence for cross cutting faults and possibly an E-W fold in the mineralized area (Keevil N B). IEP is therefore using historic and new lithochemical data to better define and correlate the volcanic units, and to reassess the structural picture (Barrett T may 2018 figure 3).

Polymetallic sulfide mineralisation occurs as stringers, semi-massive and massive patches and disseminations. This is most common in the andesitic unit, but also occurs in the mafic and felsic volcanics.

The sulphides have similarities to feeder zones associated with VMS deposits, but their orientation and extent have yet to be defined, apart from the main historic drift which followed an E-W Cu-rich sulphide zone. Although it is not known if this was a discordant feeder or a concordant semi-massive sulfide horizon.

5 DIAMOND DRILL PROGRAM AND RESULTS:

Two diamond drill holes totalling 368 meters were drilled. The drill holes are targeting the down plunge and dip of the "H" zone below the workings and across the length as defined in 2017.

Summary statistics for diamond drill hole IG-20-21 and IG-20-22

Hole ID	UTM east	UTM north	Azimuth	Dip	Length m	start	finish
IG-20-21	458828	5370134	281	-57	114m	January 15/20	January 16/20
IG-20-22	458706	5370092	44	-47	227 m	January13/20	January 20/20

The hole IG-20-21 confirmed the presence of Felsic volcanics, a mixed fragment, a chloritized rhyolite with associated stringers and a bleached mafic unit

Drill-hole IG-20-22 has been logged and the filing report will be completed in near future.

6. CONCLUSIONS

The 2020 program was successful in confirming with hole 21 a better understanding of the “H” stinger cu-au zone and associated zn-py-au zone having encountered 3 mineralised zones. The diamond drill hole IG 20-22 will provide a complete section below the workings to determine a 3D platform on the extent as the hole was planned to encounter the zones below the workings and the first test on the down plunge. Based on visual examination of the first holes the stringer zone and the Zn were larger than anticipated. Preliminary assays from hole 21 are as follows:

New Zinc zone at collar

7.4 m to 10.0m 2.6 m 0.28 g/t Au, 6.4 g/t Ag, 0.64 % Cu, 1.29% Zn

Gold Zone

42.0 m to 109.5 m 67.5 m 0.69 g/t Au, 2.98 g/t Ag, 0.32% Cu 0.4 % Zn

Including

60.65 to 109.5 m 48.85 m 0.83 g/t Au, 2.35 g/t Ag, 0.256 % Cu, 0.41% Zn

*18 samples are being completed with metallics using 500 g samples from crusher reject as the initial sampling used only 250 g from 1.5 to 2 kg samples with VG returning anomalous values.

The project has been tested near surface and remains open with VTEM anomaly to a depth untested > 450 m. The near surface grades would be economic for open pit.

In reviewing the historical data a geomagnetic survey by N.B. Keevil had identified a fault zone that after the recent programs have been confirmed as being controls on mineralisation. A geology map prepared in 1946 identifies a mineralised trend for 4,800 feet based on 5 drill holes recorded with azimuth of south west direction assumed on mag modeling. The presence of a spotted dog unit identified in 1942 for the Peter Bell Copper Mining syndicate has yielded some cordierite alteration as confirmed by F. Breaks Petrographic report. The drill hole IG 20-22 upon detailed logging has confirmed the presence of a fault zone encountered on 4 occasions with the geology staggering on similar occasions with minerals containing sulphides consistent the Keevil interp.

The future programs are to be directed by drilling below the workings to test the down-plunge that remains open and was encountered in a vertical hole to 1000' to 1200' in 1960's .

A report by Nelson Hogg and Stewart Ferguson 1951 to 1954 recorded 35 mineralised trenches IEP has inspected these trenches and confirmed the accuracy of the work.

A detailed program of validating the work is being planned by the company on the property with an experienced operator. The 2020 program was planned to attract an operator.

A cursory review of gold assays > 1g/t Au over combined Cu-Zn-Pb from 88 samples identified from 4 previous programs has shown that over 60% of the samples have more gold in g/t Au than base metal in % suggesting an indicator of a gold vms system. These samples are mainly located above 150 meters Vertical.

A recent report by Ayer Hamilton was filed to better define the contacts within the Blake River assemblage and Kidd-Monro assemblage.

7. Author's Certificate

I Lionel Bonhomme do declare that:

I reside at 643 Pine St North Timmins, Ontario P4N 6M2

I hold a valid Prospectors license

I hold a client number with MNDM

I am a member of the Porcupine and Sudbury Prospectors Group

I am a life member of Prospectors & Developers Association of Canada

I am a member of the Geological Association of Canada

I have been active in mineral exploration and worked in the industry since 1964

I am the president of International Explorers & Prospectors Inc.

I have managed the exploration program in this report.



Lionel Bonhomme

Assay Table											
IG 20-21				Au	Ag	Cu	Zn	Pb	Co	Cu	Zn
				FA-GEO	AAT-7	AAT-7	AAT-7	AAT-7	AAT-7	AAT-8	AAT-8
				ppb	ppm	ppm	ppm	ppm	ppm	%	%
				5	0.2	2	2	2	2	0.01	0.01
			Designation	=====	=====	=====	=====	=====	=====	=====	=====
From	To	Sample number									
3	5.35	19317	A19317	220	3	3329	7923	142	45		
5.35	6.4	19318	A19318	54	0.6	178	1105	46	27		
6.4	7.4	19319	A19319	69	1.8	606	3927	135	30		
7.4	8.8	19320	A19320	375	2.9	1283	11600	154	38		1.16
8.8	10	19321	A19321	172	10.5	12400	14600	256	83	1.24	1.46
10	11.5	19322	A19322	46	2.1	3580	1360	45	15		
11.5	13	19323	A19323	26	0.2	151	1090	19	27		
13	14.5	19324	A19324	34	0.7	185	5530	33	21		
14.5	16	19325	A19325	27	<0.2	80	479	12	23		
16	17.5	19326	A19326	14	<0.2	100	442	13	17		
17.5	19	19327	A19327	23	1.9	1479	1135	27	23		
19	20.3	19328	A19328	345	4.9	3744	4505	75	92		
20.3	22	19329	A19329	98	1.4	1687	3373	22	31		
22	23.5	19330	A19330	76	2.8	346	1021	69	28		
23.5	25	19331	A19331	32	1.7	248	1806	102	36		
25	26.5	19332	A19332	33	1.1	187	1031	57	26		
26.5	28	19333	A19333	90	1.3	168	369	82	27		
28	29.5	19334	A19334	32	0.7	199	976	53	19		
29.5	31	19335	A19335	25	0.4	447	4104	24	13		
31	33	19336	A19336	26	<0.2	301	2105	20	16		
33	34.5	19337	A19337	20	<0.2	97	480	22	19		
34.5	36	19338	A19338	14	<0.2	160	846	20	22		
36	37.5	19339	A19339	29	<0.2	116	891	24	21		
37.5	39	19340	A19340	17	0.2	178	1016	17	21		
39	40.5	19341	A19341	33	0.7	128	1288	36	26		
40.5	42	19342	A19342	119	1.5	634	2400	40	24		
42	43.5	19343	A19343	178	3	4875	4662	47	30		
43.5	45.1	19344	A19344	308	1.8	4305	4608	41	30		
45.1	46.1	19345	A19345	329	5.9	15100	11300	147	63	1.51	1.13
46.1	47.65	19346	A19346	773	7.2	5681	3481	199	67		
47.65	48.8	19347	A19347	1587	31.8	34900	20900	767	125	3.49	2.09
48.8	50.1	19348	A19348	1090	2.2	3826	16	104	34		
50.1	51.8	19349	A19349	327	1.2	716	1282	111	28		
51.8	53.3	19350	A19350	79	<0.2	116	584	31	23		
53.3	55	19351	A19351	117	<0.2	114	2013	23	19		
55	56.5	19352	A19352	176	<0.2	737	1572	32	27		
56.5	58	19353	A19353	36	<0.2	100	572	22	19		
58	59.5	19354	A19354	109	0.3	97	862	41	19		
59.5	60.65	19355	A19355	13	<0.2	90	643	20	21		
60.65	61.5	19357	A19357	15220	54.1	48900	27200	2677	340	4.89	2.72
61.5	63	19356	A19356	423	1.2	678	1191	59	23		
63	64.5	19358	A19358	353	1.5	790	1210	70	25		
64.5	66	19359	A19359	118	0.5	291	964	53	23		
66	67.5	19360	A19360	554	2.7	2524	2596	67	42		

Assay Table											
IG 20-21				Au	Ag	Cu	Zn	Pb	Co	Cu	Zn
				FA-GEO	AAT-7	AAT-7	AAT-7	AAT-7	AAT-7	AAT-8	AAT-8
				ppb	ppm	ppm	ppm	ppm	ppm	%	%
				5	0.2	2	2	2	2	0.01	0.01
			Designation	=====	=====	=====	=====	=====	=====	=====	=====
From	To	Sample number									
67.5	69	19361	A19361	649	8.4	13000	8543	143	331	1.3	
69	70.5	19362	A19362	637	5.3	4878	4371	95	62		
70.5	72.3	19363	A19363	109	1.2	741	2141	55	35		
72.3	73.8	19364	A19364	1536	11.2	17300	11700	110	92	1.73	1.17
73.8	75	19365	A19365	208	1.1	717	1667	41	34		
75	76.5	19366	A19366	474	2.9	1961	9064	84	108		
76.5	78	19367	A19367	1060	2.9	2363	11700	95	64		1.17
78	79.5	19368	A19368	247	0.9	600	2089	36	36		
79.5	81	19369	A19369	116	0.6	218	3410	22	26		
81	82.3	19370	A19370	945	3.3	729	7687	106	40		
82.3	83	19371	A19371	864	1	883	24600	38	18		2.46
83	84	19372	A19372	106	<0.2	135	1651	14	27		
84	85.2	19373	A19373	802	0.7	1002	19700	36	37		1.97
85.2	87	19374	A19374	215	0.5	271	3357	18	42		
87	88	19375	A19375	69	0.2	91	761	11	22		
90	91.5	19376	A19376	944	0.5	745	2432	17	18		
91.5	93	19377	A19377	740	3.2	2263	835	59	56		
93	94.5	19378	A19378	351	1.8	1428	643	48	37		
94.5	96	19379	A19379	80	<0.2	76	348	18	29		
96	97.5	19380	A19380	771	4.2	67	762	16	29		
97.5	99	19381	A19381	326	<0.2	58	1210	15	31		
99	100.6	19382	A19382	79	<0.2	59	1058	16	30		
100.6	102	19383	A19383	207	<0.2	60	910	15	26		
102	103.7	19384	A19384	88	<0.2	52	857	14	25		
103.7	105	19385	A19385	124	<0.2	64	1621	15	28		
105	106.1	19386	A19386	42	<0.2	39	578	14	27		
106.1	108	19387	A19387	206	0.3	202	1107	16	30		
108	109.5	19388	A19388	4490	0.2	67	860	15	28		
109.5	111	19389	A19389	75	<0.2	113	1190	13	24		
111	112.5	19390	A19390	11	<0.2	90	2739	12	31		
112.5	114	19391	A19391	66	0.8	421	7820	63	12		

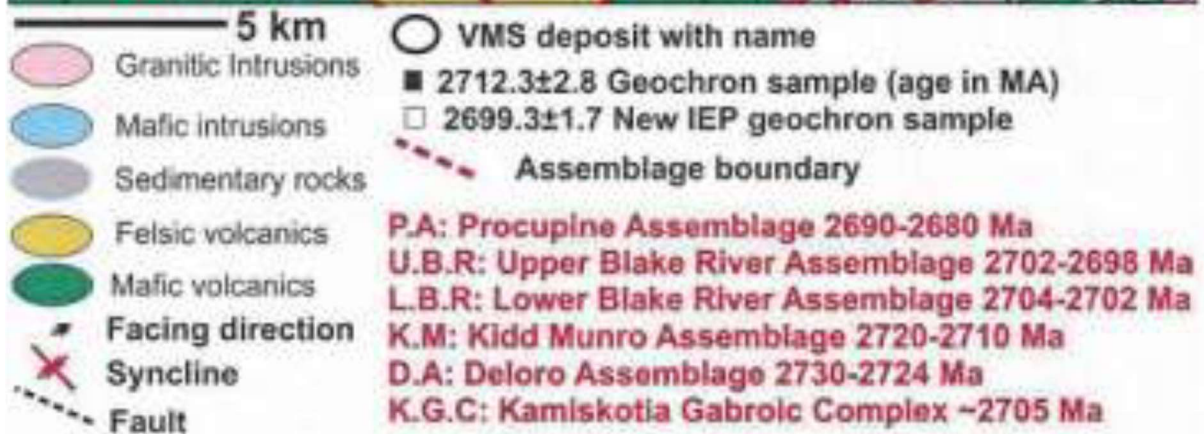
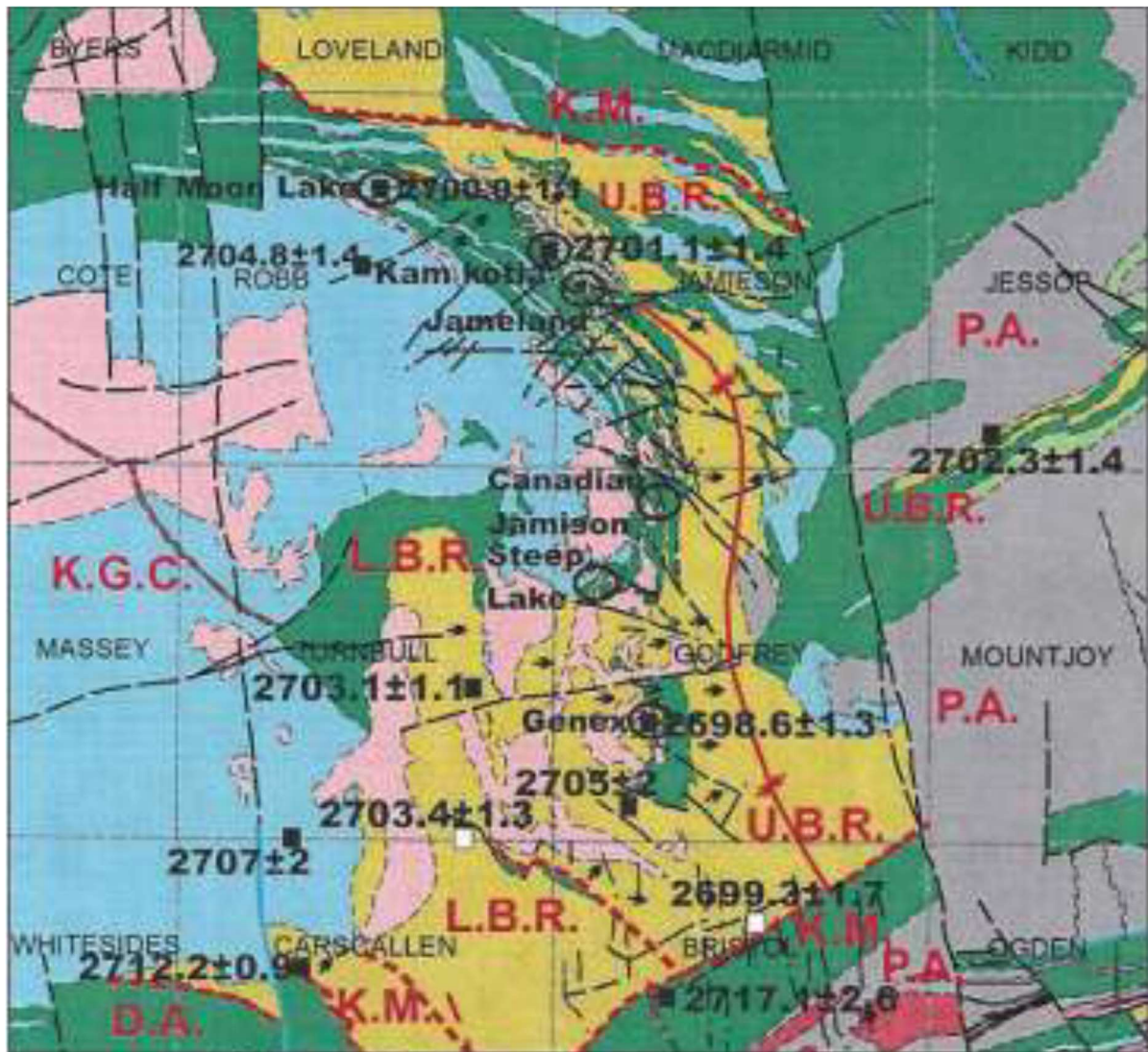
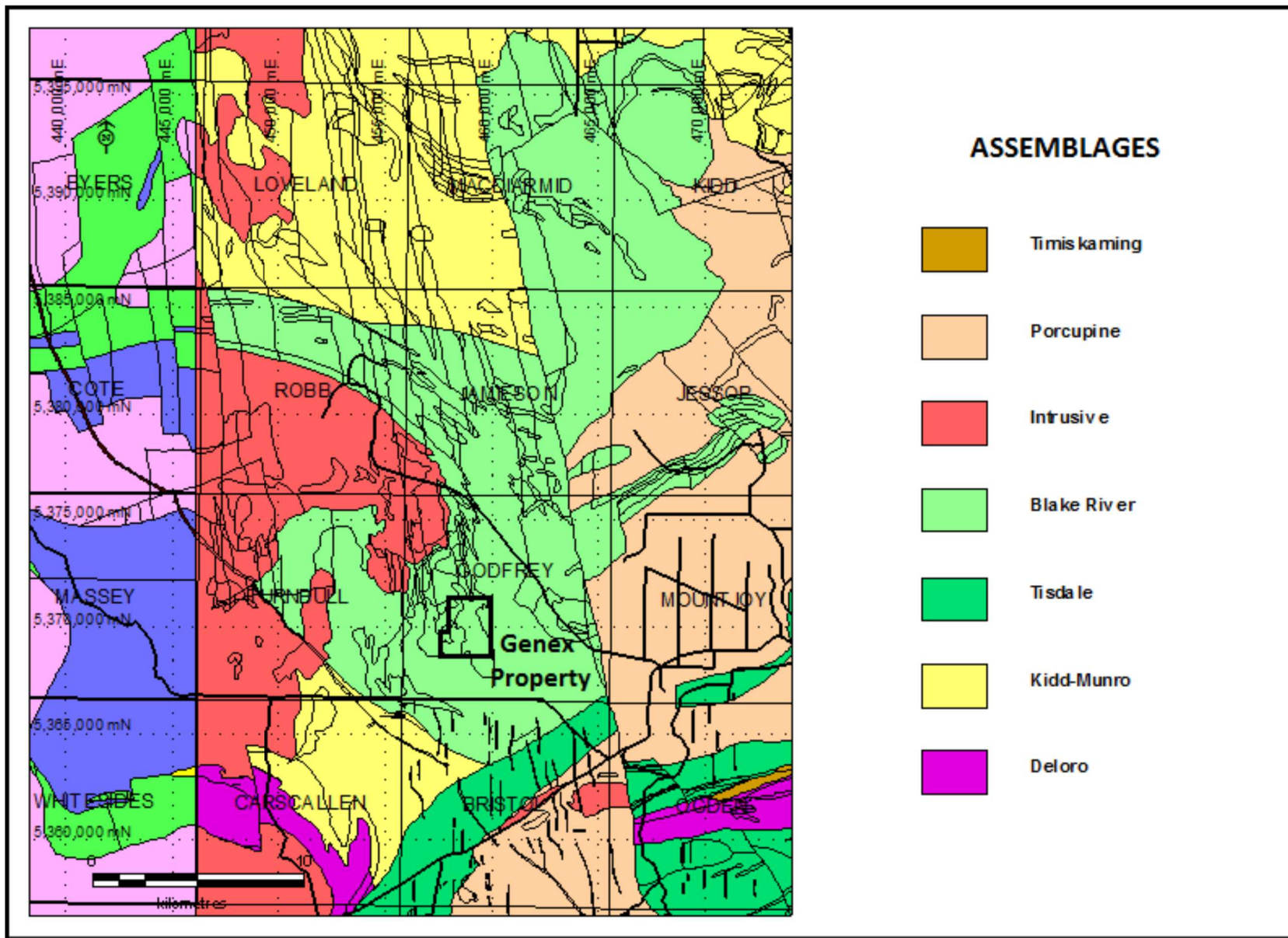
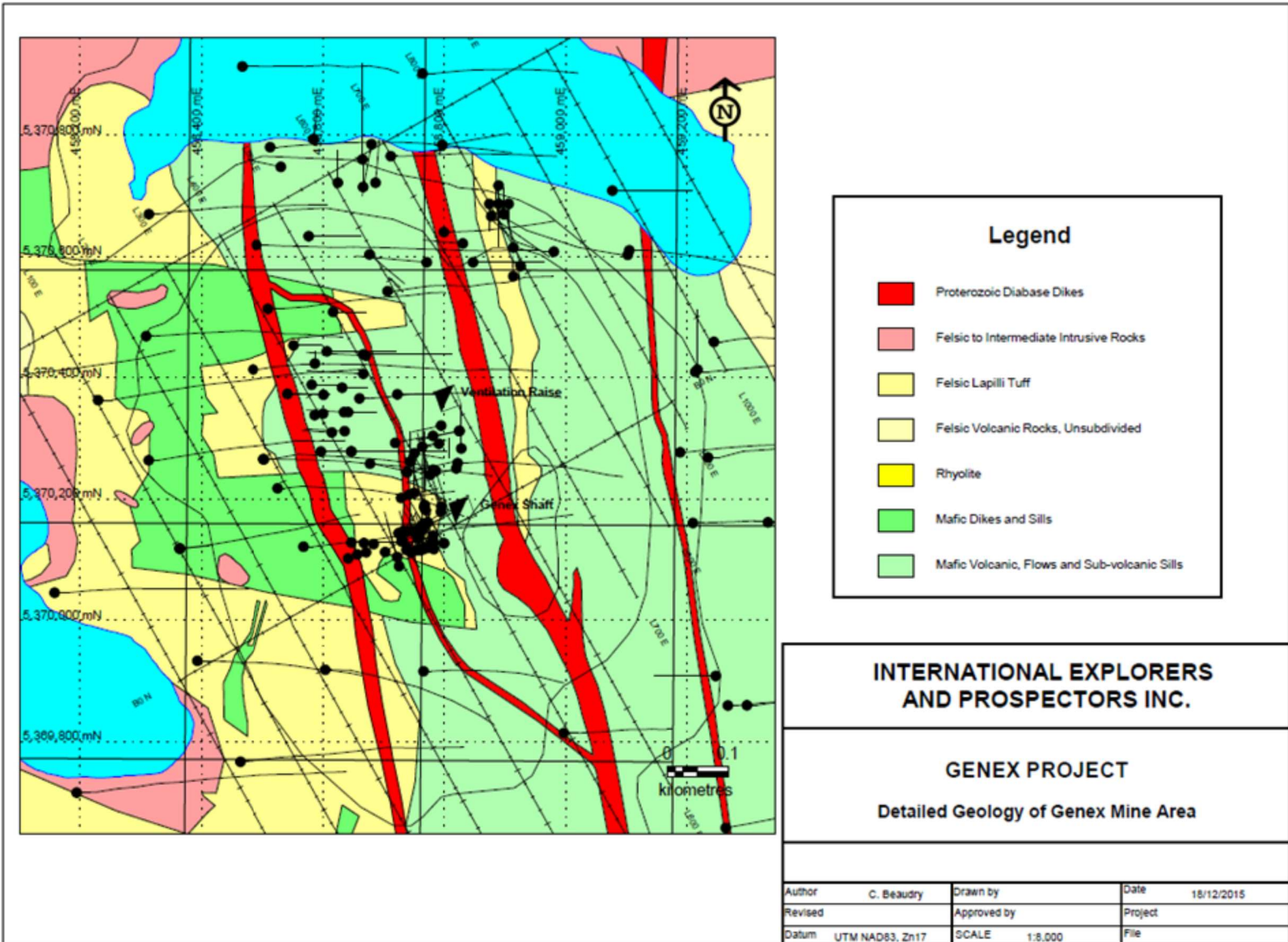
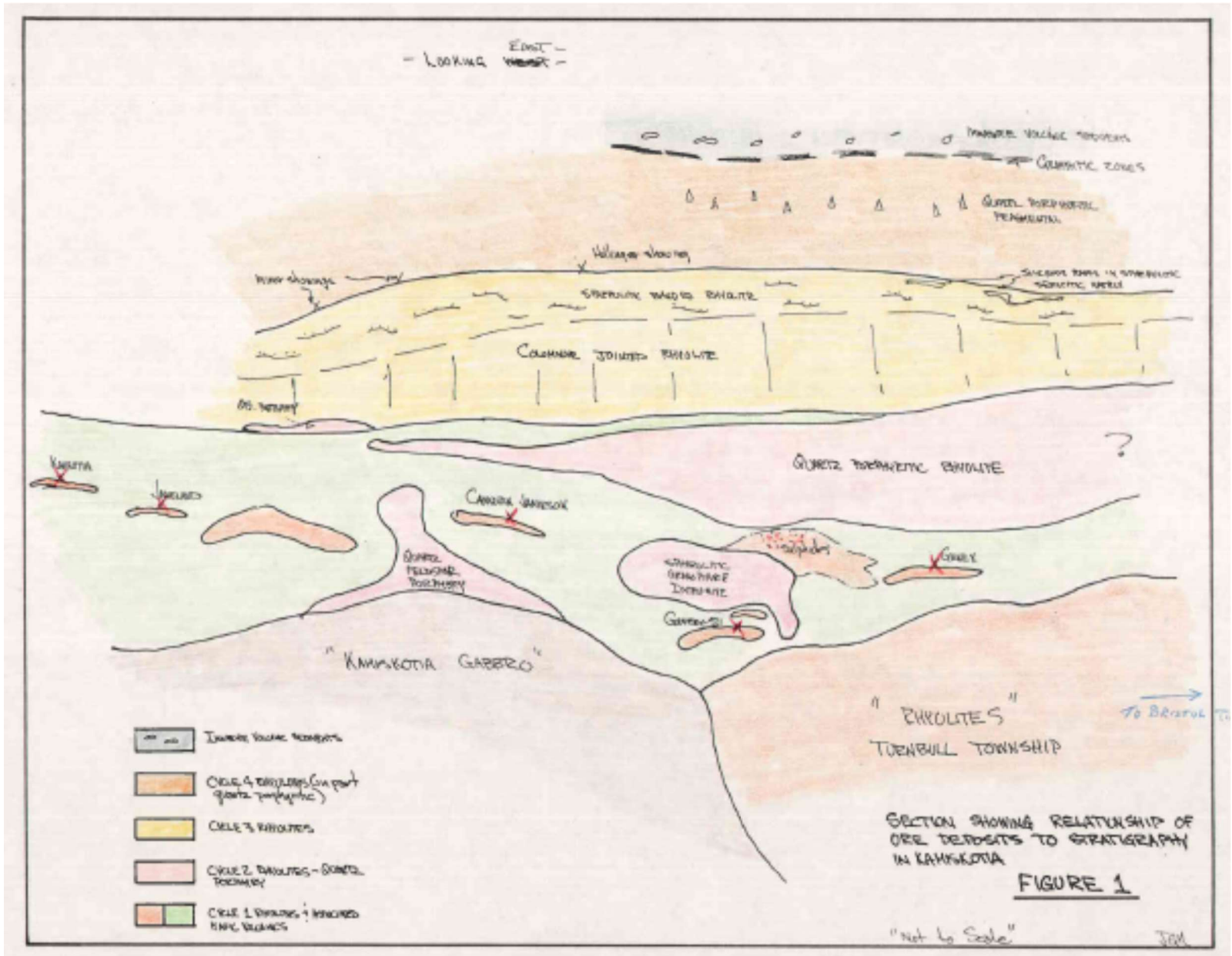


Figure 1. Kamiskotia area general geology with U-Pb zircon ages in MA VMS deposit locations and assemblage boundaries.

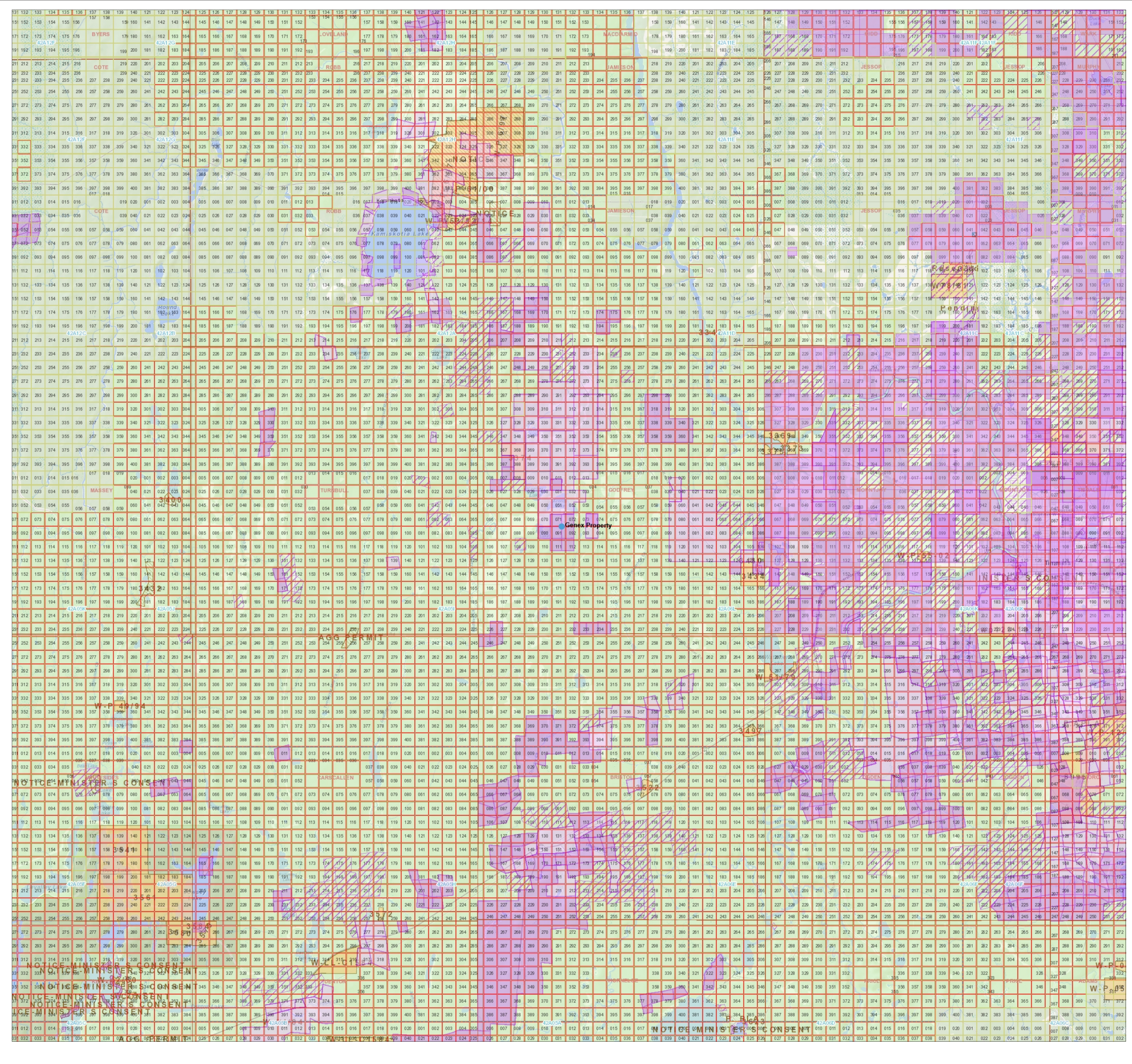








Ontario Ministry of Northern Development and Mines
Mining Lands Tenure Map



Administrative Districts

Township
Unknown

Mining Division

Land Registry

MNRF District Office
Timmins

Topographic

- Building as Symbol
Runway
Heliport/Hospital Heliport
Skiplane Base
Ferry Route
Toll Road
Railway/Train Station
Railway with Bridge
Railway with Tunnel
Water Road
Road with Bridge
Road with Tunnel
Aerodrome, King or Queen Highway
Secondary Highway
Tertiary Highway
One Way Road
Road with Address Ranges
Hydro Line, Communication Line
Natural Gas Pipeline, Water Pipeline
Index Contour
Contour
Wooded Area
Wetland
Waterbody
Waterbody Elevation
Watercourse
Falls
Rapids
Rapids/Falls
Rocks
Lock Gate
Dam/Hydro Wall
Provincial/State Boundary
International Boundary
Upper Level Control
Municipal Boundary
Lower Level Single Tax
Municipal Boundary
Lot Line
Indian Reserve
Provincial Park
National Park
Conservation Reserve
Military Lands

Legend

- Mining Claim
Boundary Claim
Legacy Claim
Alienation
Withdrawal
Notice
ENDM Administrative Boundaries
ENDM Townships and Areas
Geographic Lot Fabric
Mining Division
Land Tenure
Surface Rights
Mining Rights
Mining and Surface Rights
Order-in-Council
Federal Land Other

Scale: 1:50,000



Map Datum: NAD 83
Projection: Web Mercator



Those wishing to stake mining claims should consult with the Provincial Mining Records' Office of the Ministry of Northern Development and Mines for additional information on the status of the lands shown hereon. This map is not intended for navigational, survey, or land title determination purposes as the information shown on this map is compiled from various sources. Completeness and accuracy are not guaranteed.

Additional information may also be obtained through the local Land Titles or Registry Office, or the Ministry of Natural Resources and Forestry. The information shown is derived from digital data available in the Provincial Mining Records' Office at the time of downloading from the Ministry of Northern Development and Mines web site. © Queen's Printer for Ontario, 2016



Ontario Ministry of Northern Development and Mines
Mining Lands Tenure Map

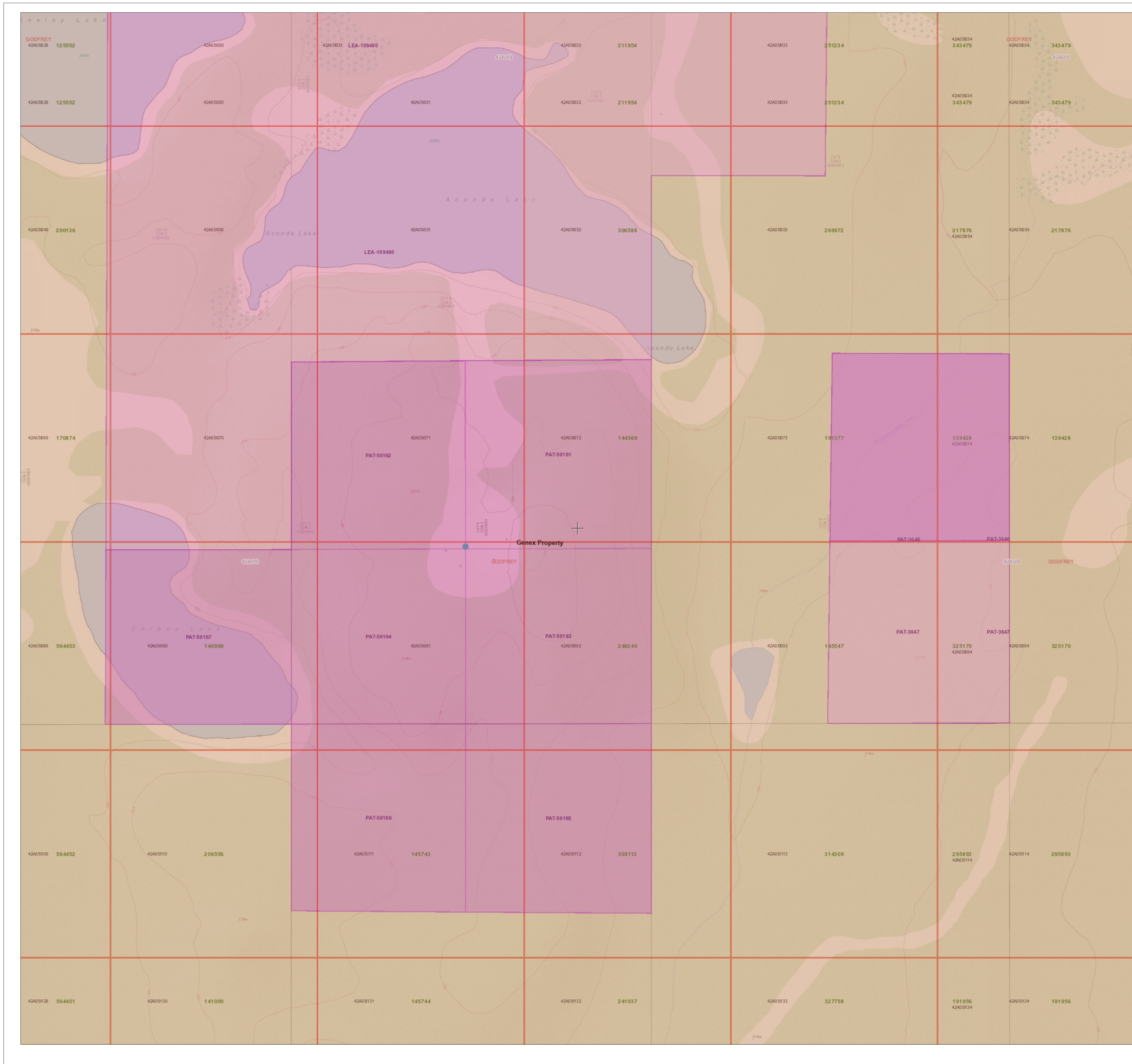
Administrative Districts

Township
Unknown

Mining Division

Land Registry

MNRF District Office
Timmins

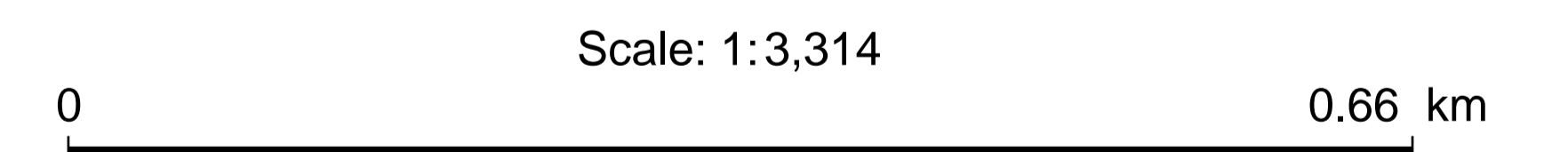


Topographic

- Building as Symbol
- Building as Scale
- Railway
- Helipad / Hospital Helipad
- Suspense Base
- Ferry Route
- Tail Head / Tail
- Railway / Train Station
- Railway with Bridge
- Railway with Tunnel
- Road (Main - Silver)
- Winter Road
- Road with Bridge
- Road with Tunnel
- Primary, Kings or 402 Service Highway
- Secondary Highway
- Tertiary Highway
- Ontario, County, Regional or Municipal Road
- Trail Highway
- One Way Road
- Road with Permanent Blocked Passage
- Road with Address Ranges
- Hydro Line, Communication Line or Discontin. Transmission Line
- Natural Gas Pipeline, Water Pipeline or Unknown Pipeline
- Spot Height
- Index Contour
- Contour
- Wooded Area
- Wetland
- Waterbody
- Waterbody Elevation
- Watercourse
- Falls
- Rapids
- Rapids / Falls
- Rapids
- Rocks
- Lock Gate
- Dam / Hydro Wall
- Dam / Hydro Wall
- Provincial / State Boundary
- International Boundary
- Upper Tier (Control)
- Municipal Boundary
- Lower Tier / Single Tier
- Municipal Boundary
- Lot Line
- Indian Reserve
- Provincial Park
- National Park
- Conservation Reserve
- Military Lands

Legend

- Mining Claim**
- Mining Claim
- Boundary Claim
- Legacy Claim
- Alienation**
- Withdrawal
- Notice
- ENDM Administrative Boundaries**
- ENDM Townships and Areas
- Geographic Lot Fabric
- Mining Division
- Land Tenure**
- Surface Rights
- Mining Rights
- Mining and Surface Rights
- Order-in-Council
- Federal Land Other



Map Datum: NAD 83
Projection: Web Mercator




Those wishing to stake mining claims should consult with the Provincial Mining Recorders' Office of the Ministry of Northern Development and Mines for additional information on the status of the lands shown hereon. This map is not intended for navigational, survey, or land title determination purposes as the information shown on this map is compiled from various sources.

Completeness and accuracy are not guaranteed.

Additional information may also be obtained through the local Land Titles or Registry Office, or the Ministry of Natural Resources and Forestry.

The information shown is derived from digital data available in the Provincial Mining Recorders' Office at the time of downloading from the Ministry of Northern Development and Mines web site.

© Queen's Printer for Ontario, 2016

Drillhole ID: IG-20-21		Claim No. PAT-50163		End of Hole: 114 meters	Azimuth: 27 degrees Dip: -57 degrees	Orientation Tests: (azimuth / dip) Test Type: Reflex		Page 1 of 2							
Drill Log For: International Explorers and Prospectors Inc.		Township Godfrey		Core Size: NQ (47.75mm)		Depth	Azimuth / Dip	Magnetic field							
Drilling Contractor: NPLH Drilling		Date Hole Started:	2020-01-15	Casing Length: 3 m left in and capped		/	/								
UTM NAD 83 zone 17		Date Completed:	2020-01-19	Logged by: Lionel Bonhomme		/	/								
Collar Easting: 458828		Collar Easting (Grid):		Signature: 		/	/								
Collar Northing: 5370134		Collar Northing (Grid):		Date Logged: 2020/01/15 to 2020/02/10		/	/								
Meterage		Rock Type		Description		Pyrite %		Sample Intervals		Sample Length		Sample No.		Assays	
From	To			Colour, Grain Size, Texture, Minerals, Alteration, etc.				From	To						
0	3	Casing		casing to 3 meters bedrock setup											
3	32.84	Rhyolite		Grey rhyolite fragmental											
				3 - 4.36	Limonite staining with bands and blebs of Sph/Cpy										
				4.36 - 6.45	Dark Grey Rhyolite										
				6.7 - 7.5	various fragments containing 2% Sph with cpy										
				7.5 - 9.0	felsic fragments contain qtz eyes Bleaches with sulphides in fragments and around, locally up to 2cm massive brown sph										
				9.0 - 10.0	2 -3% sph to 9.45, then a dk grey patch with 5% cpy										
				10.0 - 11.0	2% cpy										
				13.0 - 14.0	3% brown Sph including blebs of massive 1-2cm in size where the core in darker grey										
				14.0 - 15.0	3% sph										
				18.0 - 19.05	dark grey block, 4% sph, 1% cpy										
				20.35 - 22.0	5% sph - 1% cpy										
				22.0 - 22.3	5% sph - 1% cpy										
				25.0 - 26.0	3% sph										
				26.0 - 27.64	3% sph										
				sharp contact at 45 deg tca with next unit											
				27.64 - 30.22	dark grey chloritic in nature with a few patches of py/sph with qtz and ankerite veins										
				30.22	bleached mixture of fragments										
				30.5	10cm of 15% sph										

Hole Name: IG-20-21								Page 2 of 2		
Meterage		Rock Type	Description Colour, Grain Size, Texture, Minerals, Alteration, etc.	Pyrite %	Sample Intervals		Sample Length	Sample No.	Assays	
From	To				From	To				
32.84	41.85	Amygdudal Mafic	Grey, Siliceous minor 1% py locally, minor Sph some 1cm quartz veins and clear amygdules							
41.85	82.3	Rhyolite	36 - 37 2-3% py Sph Chloritic Rhyolite dark black 41.85 - 45.0 dark black , more siliceous 2% sph 1% py (silvery) 45 - 46.1 5% cpy 25% Py/Sph 46.1 - 51.85 10% py/cpy in qtz veins 51.65 - 60.65 black chlorite 20% quartz veins up to 1cm 20% black fragments 1-2% py/cpy/shp mixed with blebs up to 2cm some 3mm circular vesicules with or without sulphides locally up to 5% @ 58 m for 2 m sulphides increasing to 60 m 60.65 - 60.88 30 - 40% cpy in vein with VG and Sph 60.88 - 67.3 2-5% py/sph or py/cpy/shp with some py 10% vesicules 2-4 cm in size as above 67.3 - 72.15 black in colour increase of stringers 6% cpy minor py/shp to 69 m 69 - 72.75 vesicules increase to 15% stringer of py/sph/cpy 72.75 - 82.3 dark grey siliceousness increase 10% py? 73 - 74 5%cpy, 2% sph in stringers Py/Sph stringers to 82.3m							
82.3	114	Andesite	Andesite with sericite alteration, beached grey in color and silicified 82.3 - 84.66 10% py/sph with qtz veins and fragments beige, honey and brown sph 84.66 - 88 pale grey 2-4% sph stringers 88 - 90 7 foot void no core 90 - 91 pale grey rock with chunks of py 91 - 96.6 pale grey with 1-2% py stringers tr sph 96.6 - 101.18 vesicules reappear with 2-3% stringers of py/sph 101.18 - 102.16 3% py minor sph 102.16 - 114 grey andesite with 3% amydules and minor py/sph some py/sph stringers, overall 2% sulphides							
114		end of hole	hole is not artesian							

Hole Name: **IG-20-21**

Assay table pg 1

			Au	Ag	Cu	Zn	Pb	Co	Cu	Zn
			FA-GEO	AAT-7	AAT-7	AAT-7	AAT-7	AAT-7	AAT-8	AAT-8
			ppb	ppm	ppm	ppm	ppm	ppm	%	%
			5	0.2	2	2	2	2	0.01	0.01
Designation			=====	=====	=====	=====	=====	=====	=====	=====
From	To	Sample number								
3	5.35	19317	A19317	220	3	3329	7923	142	45	
5.35	6.4	19318	A19318	54	0.6	178	1105	46	27	
6.4	7.4	19319	A19319	69	1.8	606	3927	135	30	
7.4	8.8	19320	A19320	375	2.9	1283	11600	154	38	1.16
8.8	10	19321	A19321	172	10.5	12400	14600	256	83	1.24 1.46
10	11.5	19322	A19322	46	2.1	3580	1360	45	15	
11.5	13	19323	A19323	26	0.2	151	1090	19	27	
13	14.5	19324	A19324	34	0.7	185	5530	33	21	
14.5	16	19325	A19325	27	<0.2	80	479	12	23	
16	17.5	19326	A19326	14	<0.2	100	442	13	17	
17.5	19	19327	A19327	23	1.9	1479	1135	27	23	
19	20.3	19328	A19328	345	4.9	3744	4505	75	92	
20.3	22	19329	A19329	98	1.4	1687	3373	22	31	
22	23.5	19330	A19330	76	2.8	346	1021	69	28	
23.5	25	19331	A19331	32	1.7	248	1806	102	36	
25	26.5	19332	A19332	33	1.1	187	1031	57	26	
26.5	28	19333	A19333	90	1.3	168	369	82	27	
28	29.5	19334	A19334	32	0.7	199	976	53	19	
29.5	31	19335	A19335	25	0.4	447	4104	24	13	
31	33	19336	A19336	26	<0.2	301	2105	20	16	
33	34.5	19337	A19337	20	<0.2	97	480	22	19	
34.5	36	19338	A19338	14	<0.2	160	846	20	22	
36	37.5	19339	A19339	29	<0.2	116	891	24	21	
37.5	39	19340	A19340	17	0.2	178	1016	17	21	
39	40.5	19341	A19341	33	0.7	128	1288	36	26	
40.5	42	19342	A19342	119	1.5	634	2400	40	24	
42	43.5	19343	A19343	178	3	4875	4662	47	30	
43.5	45.1	19344	A19344	308	1.8	4305	4608	41	30	
45.1	46.1	19345	A19345	329	5.9	15100	11300	147	63	1.51 1.13
46.1	47.65	19346	A19346	773	7.2	5681	3481	199	67	
47.65	48.8	19347	A19347	1587	31.8	34900	20900	767	125	3.49 2.09
48.8	50.1	19348	A19348	1090	2.2	3826	16	104	34	
50.1	51.8	19349	A19349	327	1.2	716	1282	111	28	
51.8	53.3	19350	A19350	79	<0.2	116	584	31	23	

Hole Name:	IG-20-21
------------	-----------------

Assay table pg 2

	Au FA-GEO ppb 5	Ag AAT-7 ppm 0.2	Cu AAT-7 ppm 2	Zn AAT-7 ppm 2	Pb AAT-7 ppm 2	Co AAT-7 ppm 2	Cu AAT-8 % 0.01	Zn AAT-8 % 0.01			
53.3	55	19351	A19351	117	<0.2	114					
55	56.5	19352	A19352	176	<0.2	737					
56.5	58	19353	A19353	36	<0.2	100					
58	59.5	19354	A19354	109	0.3	97					
59.5	60.65	19355	A19355	13	<0.2	90					
60.65	61.5	19357	A19357	15220	54.1	48900	27200	2677	340	4.89	2.72
61.5	63	19356	A19356	423	1.2	678					
63	64.5	19358	A19358	353	1.5	790					
64.5	66	19359	A19359	118	0.5	291					
66	67.5	19360	A19360	554	2.7	2524					
67.5	69	19361	A19361	649	8.4	13000	8543	143	331	1.3	
69	70.5	19362	A19362	637	5.3	4878	4371	95	62		
70.5	72.3	19363	A19363	109	1.2	741	2141	55	35		
72.3	73.8	19364	A19364	1536	11.2	17300	11700	110	92	1.73	1.17
73.8	75	19365	A19365	208	1.1	717	1667	41	34		
75	76.5	19366	A19366	474	2.9	1961	9064	84	108		
76.5	78	19367	A19367	1060	2.9	2363	11700	95	64		1.17
78	79.5	19368	A19368	247	0.9	600	2089	36	36		
79.5	81	19369	A19369	116	0.6	218	3410	22	26		
81	82.3	19370	A19370	945	3.3	729	7687	106	40		
82.3	83	19371	A19371	864	1	883	24600	38	18		2.46
83	84	19372	A19372	106	<0.2	135	1651	14	27		
84	85.2	19373	A19373	802	0.7	1002	19700	36	37		1.97
85.2	87	19374	A19374	215	0.5	271	3357	18	42		
87	88	19375	A19375	69	0.2	91	761	11	22		
90	91.5	19376	A19376	944	0.5	745	2432	17	18		
91.5	93	19377	A19377	740	3.2	2263	835	59	56		
93	94.5	19378	A19378	351	1.8	1428	643	48	37		
94.5	96	19379	A19379	80	<0.2	76	348	18	29		
96	97.5	19380	A19380	771	4.2	67	762	16	29		
97.5	99	19381	A19381	326	<0.2	58	1210	15	31		
99	100.6	19382	A19382	79	<0.2	59	1058	16	30		
100.6	102	19383	A19383	207	<0.2	60	910	15	26		

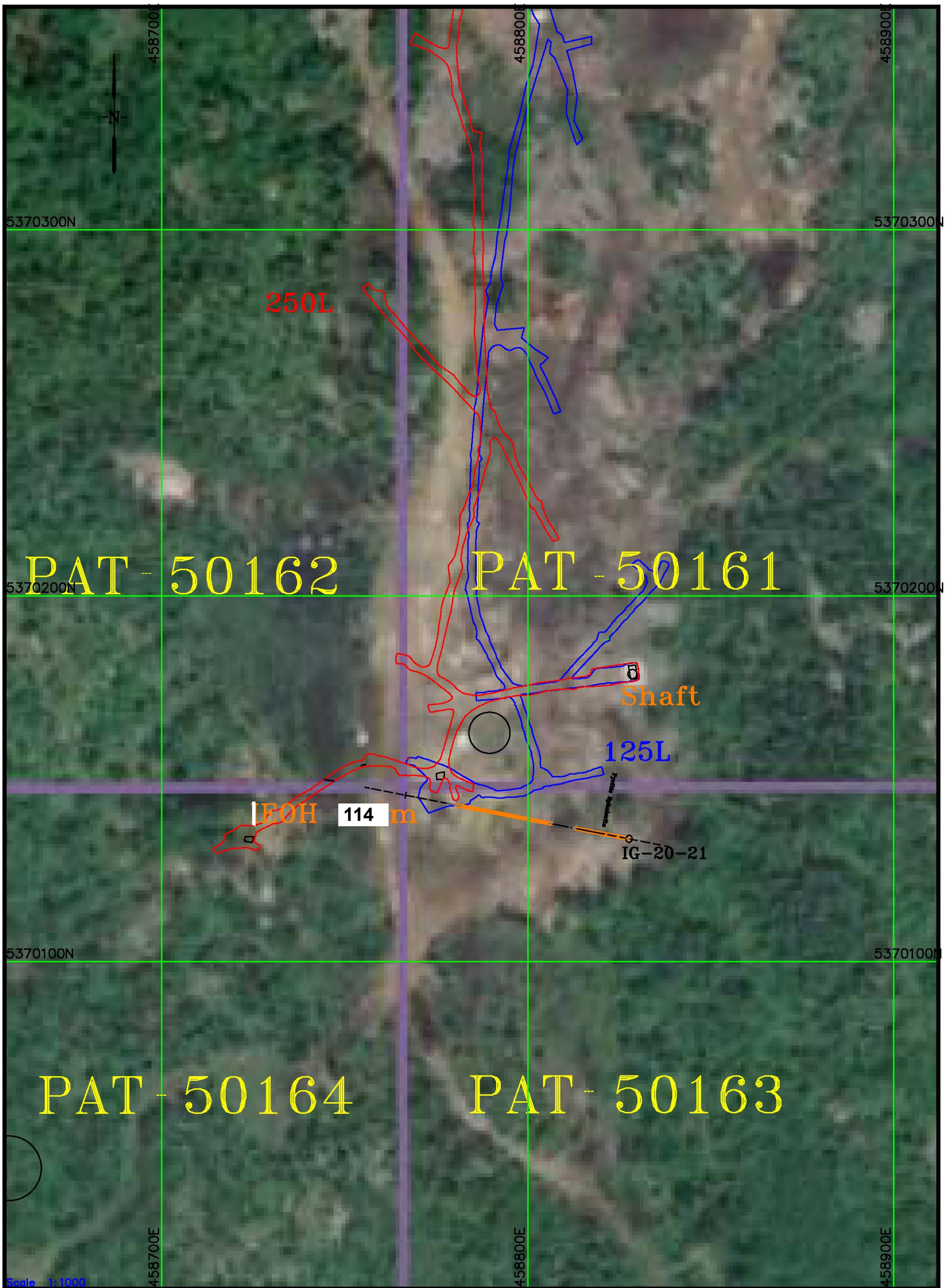
Hole Name: **IG-20-21**

Assay table pg 3

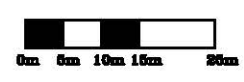
	Au FA-GEO ppb 5	Ag AAT-7 ppm 0.2	Cu AAT-7 ppm 2	Zn AAT-7 ppm 2	Pb AAT-7 ppm 2	Co AAT-7 ppm 2	Cu AAT-8 % 0.01	Zn AAT-8 % 0.01	
102	103.7	19384	A19384	88	<0.2	52	857	14	25
103.7	105	19385	A19385	124	<0.2	64	1621	15	28
105	106.1	19386	A19386	42	<0.2	39	578	14	27
106.1	108	19387	A19387	206	0.3	202	1107	16	30
108	109.5	19388	A19388	4490	0.2	67	860	15	28
109.5	111	19389	A19389	75	<0.2	113	1190	13	24
111	112.5	19390	A19390	11	<0.2	90	2739	12	31
112.5	114	19391	A19391	66	0.8	421	7820	63	12

List of abbreviations used

- Au gold
- ag silver
- cm centimeters
- Co cobalt
- Cpy calcopyrite
- Cu copper
- deg degrese
- mm millimeters
- ppb parts per billion
- ppm parts per million
- Py Pyrite
- qtz quartz
- Qv quartz vein
- Sph Sphalerite
- tca to core axis
- tr trace
- VG visable gold

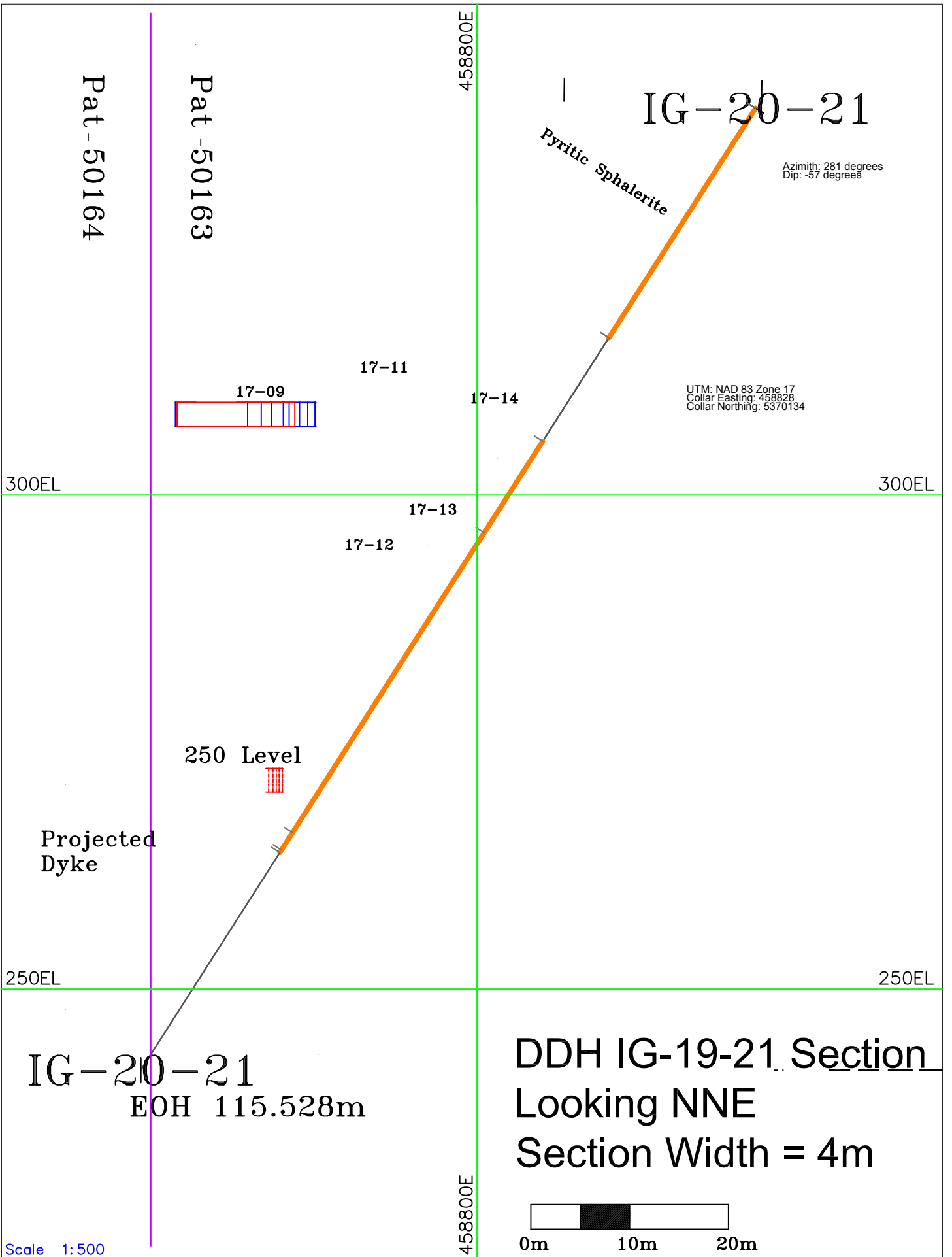


Scale 1:1000



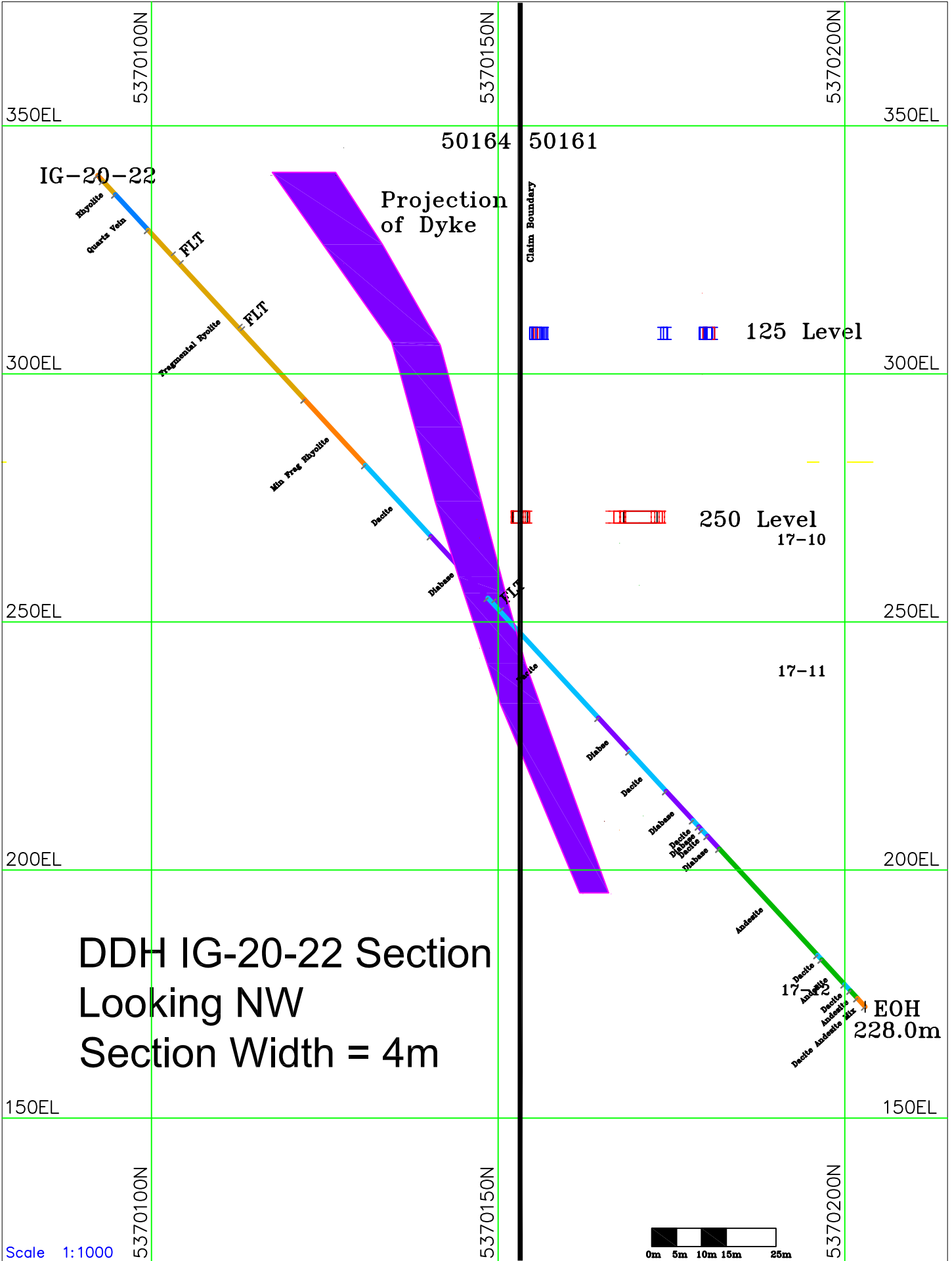
UTM: NAD 83 Zone 17
 Collar Easting: 458828
 Collar Northing: 5370134
 Azimuth: 281 degrees
 Dip: -57 degrees
 final length 114 meters

Genex DDH Plan
 IG-20-21
 June 8, 2020





Genex DDH Plan
 IG-20-22



DDH IG-20-22 Section
Looking NW
Section Width = 4m

***** Certificate of analysis *****

Laboratoire Expert Inc.

750 A rue Saguenay
Rouyn-Noranda, Québec
Canada, J9X 7B5
Telephone : (819) 762-7100, Fax : (819) 762-7510

Date : 2020/02/04

Page : 1 of 6

Client : International Explorers and Prospectors Inc.	Folder : 56600
Addressee : Peter Colbert	Order number :
	No Envoi (Dispatch) :
	Project : GENET
Total number of samples : 43	

Designation	Au FA-GEO ppb 5	Au-Dup FA-GEO ppb 5	Au FA-GRAV g/t 0.03	Ag AAT-7 ppm 0.2	Ag-Dup AAT-7 ppm 0.2	Cu AAT-7 ppm 2	Cu-Dup AAT-7 ppm 2	Zn AAT-7 ppm 2
A19317	220	222		3.0	2.9	3329	3271	7923
A19318	54			0.6		178		1105
A19319	69			1.8		606		3927
A19320	375			2.9		1283		>DL
A19321	172			10.5		>DL		>DL
A19322	46			2.1		3580		1360
A19323	26			0.2		151		1090
A19324	34			0.7		185		5530
A19325	27			<0.2		80		479
A19326	14			<0.2		100		442
A19327	23			1.9		1479		1135
A19328	345			4.9		3744		4505
A19329	98	95		1.4	1.3	1687	1712	3373
A19330	76			2.8		346		1021
A19331	32			1.7		248		1806
A19332	33			1.1		187		1031
A19333	90			1.3		168		369
A19334	32			0.7		199		976
A19335	25			0.4		447		4104
A19336	26			<0.2		301		2105

>DL Value greater than detection limit



Joe Landers, Manager

***** Certificate of analysis *****

Laboratoire Expert Inc.

750 A rue Saguenay
Rouyn-Noranda, Québec
Canada, J9X 7B5
Telephone : (819) 762-7100, Fax : (819) 762-7510

Date : 2020/02/04

Page : 2 of 6

Client : International Explorers and Prospectors Inc.	Folder : 56600
Addressee : Peter Colbert	Order number :
	No Envoi (Dispatch) :
	Project : GENET
Total number of samples : 43	

Designation	Au FA-GEO ppb 5	Au-Dup FA-GEO ppb 5	Au FA-GRAV g/t 0.03	Ag AAT-7 ppm 0.2	Ag-Dup AAT-7 ppm 0.2	Cu AAT-7 ppm 2	Cu-Dup AAT-7 ppm 2	Zn AAT-7 ppm 2
A19337	20			<0.2		97		480
A19338	14			<0.2		160		846
A19339	29			<0.2		116		891
A19340	17			0.2		178		1016
A19341	33	38		0.7	0.8	128	125	1288
A19342	119			1.5		634		2400
A19343	178			3.0		4875		4662
A19344	308			1.8		4305		4608
A19345	329			5.9		>DL		>DL
A19346	773			7.2		5681		3481
A19347	1587			31.8		>DL		>DL
A19348	1090			2.2		3826		16
A19349	327			1.2		716		1282
A19350	79			<0.2		116		584
A19351	117			<0.2		114		2013
A19352	176			<0.2		737		1572
A19353	36	40		<0.2	<0.2	100	94	572
A19354	109			0.3		97		862
A19355	13			<0.2		90		643
A19356	423			1.2		678		1191

>DL Value greater than detection limit

***** Certificate of analysis *****

Laboratoire Expert Inc.

750 A rue Saguenay
 Rouyn-Noranda, Québec
 Canada, J9X 7B5
 Telephone : (819) 762-7100, Fax : (819) 762-7510

Date : 2020/02/04

Page : 3 of 6

Client : International Explorers and Prospectors Inc.	Folder : 56600
Addressee : Peter Colbert	Order number :
	No Envoi (Dispatch) :
	Project : GENET
	Total number of samples : 43

<u>Designation</u>	Au FA-GEO ppb 5	Au-Dup FA-GEO ppb 5	Au FA-GRAV g/t 0.03	Ag AAT-7 ppm 0.2	Ag-Dup AAT-7 ppm 0.2	Cu AAT-7 ppm 2	Cu-Dup AAT-7 ppm 2	Zn AAT-7 ppm 2
A19357	----- >DL		15.22	54.1		----- >DL		----- >DL
A19358	353			1.5		790		1210
A19359	118			0.5		291		964

>DL Value greater than detection limit

***** Certificate of analysis *****

Laboratoire Expert Inc.

750 A rue Saguenay
 Rouyn-Noranda, Québec
 Canada, J9X 7B5
 Telephone : (819) 762-7100, Fax : (819) 762-7510

Date : 2020/02/04

Page : 4 of 6

Client : International Explorers and Prospectors Inc.	Folder : 56600
Addressee : Peter Colbert	Order number :
	No Envoi (Dispatch) :
	Project : GENET
Total number of samples : 43	

<u>Designation</u>	Zn-Dup AAT-7 ppm 2	Pb AAT-7 ppm 2	Pb-Dup AAT-7 ppm 2	Co AAT-7 ppm 2	Co-Dup AAT-7 ppm 2	Cu AAT-8 % 0.010	Zn AAT-8 % 0.010
A19317	7843	142	129	45	42		
A19318		46		27			
A19319		135		30			
A19320		154		38			1.160
A19321		256		83		1.240	1.460
A19322		45		15			
A19323		19		27			
A19324		33		21			
A19325		12		23			
A19326		13		17			
A19327		27		23			
A19328		75		92			
A19329	3336	22	26	31	30		
A19330		69		28			
A19331		102		36			
A19332		57		26			
A19333		82		27			
A19334		53		19			
A19335		24		13			
A19336		20		16			

***** Certificate of analysis *****

Laboratoire Expert Inc.

750 A rue Saguenay
 Rouyn-Noranda, Québec
 Canada, J9X 7B5
 Telephone : (819) 762-7100, Fax : (819) 762-7510

Date : 2020/02/04

Page : 5 of 6

Client : International Explorers and Prospectors Inc.	Folder : 56600
Addressee : Peter Colbert	Order number :
	No Envoi (Dispatch) :
	Project : GENET
Total number of samples : 43	

<u>Designation</u>	Zn-Dup AAT-7 ppm 2	Pb AAT-7 ppm 2	Pb-Dup AAT-7 ppm 2	Co AAT-7 ppm 2	Co-Dup AAT-7 ppm 2	Cu AAT-8 % 0.010	Zn AAT-8 % 0.010
A19337		22		19			
A19338		20		22			
A19339		24		21			
A19340		17		21			
A19341	1221	36	38	26	29		
A19342		40		24			
A19343		47		30			
A19344		41		30			
A19345		147		63		1.510	1.130
A19346		199		67			
A19347		767		125		3.490	2.090
A19348		104		34			
A19349		111		28			
A19350		31		23			
A19351		23		19			
A19352		32		27			
A19353	578	22	23	19	23		
A19354		41		19			
A19355		20		21			
A19356		59		23			

***** Certificate of analysis *****

Laboratoire Expert Inc.

750 A rue Saguenay
 Rouyn-Noranda, Québec
 Canada, J9X 7B5
 Telephone : (819) 762-7100, Fax : (819) 762-7510

Date : 2020/02/04

Page : 6 of 6

Client : International Explorers and Prospectors Inc.	Folder : 56600
Addressee : Peter Colbert	Order number :
	No Envoi (Dispatch) :
	Project : GENET
Total number of samples : 43	

<u>Designation</u>	Zn-Dup AAT-7 ppm 2	Pb AAT-7 ppm 2	Pb-Dup AAT-7 ppm 2	Co AAT-7 ppm 2	Co-Dup AAT-7 ppm 2	Cu AAT-8 % 0.010	Zn AAT-8 % 0.010
A19357		2677		340		4.890	2.720
A19358		70		25			
A19359		53		23			

***** Certificate of analysis *****

Laboratoire Expert Inc.

750 A rue Saguenay
 Rouyn-Noranda, Québec
 Canada, J9X 7B5
 Telephone : (819) 762-7100, Fax : (819) 762-7510

Date : 2020/02/05

Page : 1 of 6

Client : International Explorers and Prospectors Inc.	Folder : 56601
Addressee : Peter Colbert	Order number :
	No Envoi (Dispatch) :
	Project : GENET
Total number of samples : 43	

Designation	Au FA-GEO ppb 5	Au-Dup FA-GEO ppb 5	Au FA-GRAV g/t 0.03	Ag AAT-7 ppm 0.2	Ag-Dup AAT-7 ppm 0.2	Cu AAT-7 ppm 2	Cu-Dup AAT-7 ppm 2	Zn AAT-7 ppm 2
A19360	554	543		2.7	2.6	2524	2419	2596
A19361	649			8.4		----- >DL		8543
A19362	637			5.3		4878		4371
A19363	109			1.2		741		2141
A19364	1536			11.2		----- >DL		----- >DL
A19365	208			1.1		717		1667
A19366	474			2.9		1961		9064
A19367	1060			2.9		2363		----- >DL
A19368	247			0.9		600		2089
A19369	116			0.6		218		3410
A19370	945			3.3		729		7687
A19371	864			1.0		883		----- >DL
A19372	106	111		<0.2	<0.2	135	130	1651
A19373	802			0.7		1002		----- >DL
A19374	215			0.5		271		3357
A19375	69			0.2		91		761
A19376	944			0.5		745		2432
A19377	740			3.2		2263		835
A19378	351			1.8		1428		643
A19379	80			<0.2		76		348

>DL Value greater than detection limit



Joe Landers, Manager

***** Certificate of analysis *****

Laboratoire Expert Inc.

750 A rue Saguenay
Rouyn-Noranda, Québec
Canada, J9X 7B5
Telephone : (819) 762-7100, Fax : (819) 762-7510

Date : 2020/02/05

Page : 2 of 6

Client : International Explorers and Prospectors Inc.	Folder : 56601
Addressee : Peter Colbert	Order number :
	No Envoi (Dispatch) :
	Project : GENET
Total number of samples : 43	

Designation	Au FA-GEO ppb 5	Au-Dup FA-GEO ppb 5	Au FA-GRAV g/t 0.03	Ag AAT-7 ppm 0.2	Ag-Dup AAT-7 ppm 0.2	Cu AAT-7 ppm 2	Cu-Dup AAT-7 ppm 2	Zn AAT-7 ppm 2
A19380	771			4.2		67		762
A19381	326			<0.2		58		1210
A19382	79			<0.2		59		1058
A19383	207			<0.2		60		910
A19384	88	81		<0.2	<0.2	52	54	857
A19385	124			<0.2		64		1621
A19386	42			<0.2		39		578
A19387	206			0.3		202		1107
A19388	4011		4.49	0.2		67		860
A19389	75			<0.2		113		1190
A19390	11			<0.2		90		2739
A19391	66			0.8		421		7820
A19392	66			0.9		453		7763
A19393	59			0.5		110		2503
A19394	45			0.5		448		6391
A19395	91			0.3		162		2743
A19396	67	66		0.5	0.4	298	297	3361
A19397	87			0.7		245		2564
A19398	23			0.2		99		1246
A19399	33			0.5		213		3800

*** Certificate of analysis ***

Laboratoire Expert Inc.

750 A rue Saguenay
Rouyn-Noranda, Québec
Canada, J9X 7B5
Telephone : (819) 762-7100, Fax : (819) 762-7510

Date : 2020/02/05

Page : 3 of 6

Client : International Explorers and Prospectors Inc.	Folder : 56601
Addressee : Peter Colbert	Order number :
	No Envoi (Dispatch) :
	Project : GENET
Total number of samples : 43	

<u>Designation</u>	Au FA-GEO ppb 5	Au-Dup FA-GEO ppb 5	Au FA-GRAV g/t 0.03	Ag AAT-7 ppm 0.2	Ag-Dup AAT-7 ppm 0.2	Cu AAT-7 ppm 2	Cu-Dup AAT-7 ppm 2	Zn AAT-7 ppm 2
A19400	26			0.3		140		742
A19401	17			<0.2		78		360
A19402	76			1.0		649		1071

***** Certificate of analysis *****

Laboratoire Expert Inc.

750 A rue Saguenay
 Rouyn-Noranda, Québec
 Canada, J9X 7B5
 Telephone : (819) 762-7100, Fax : (819) 762-7510

Date : 2020/02/05

Page : 4 of 6

Client : International Explorers and Prospectors Inc.	Folder : 56601
Addressee : Peter Colbert	Order number :
	No Envoi (Dispatch) :
	Project : GENET
Total number of samples : 43	

<u>Designation</u>	Zn-Dup AAT-7 ppm 2	Pb AAT-7 ppm 2	Pb-Dup AAT-7 ppm 2	Co AAT-7 ppm 2	Co-Dup AAT-7 ppm 2	Cu AAT-8 % 0.010	Zn AAT-8 % 0.010
A19360	2662	67	61	42	48		
A19361		143		331		1.300	
A19362		95		62			
A19363		55		35			
A19364		110		92		1.730	1.170
A19365		41		34			
A19366		84		108			
A19367		95		64			1.170
A19368		36		36			
A19369		22		26			
A19370		106		40			
A19371		38		18			2.460
A19372	1613	14	19	27	26		
A19373		36		37			1.970
A19374		18		42			
A19375		11		22			
A19376		17		18			
A19377		59		56			
A19378		48		37			
A19379		18		29			

***** Certificate of analysis *****

Laboratoire Expert Inc.

750 A rue Saguenay
 Rouyn-Noranda, Québec
 Canada, J9X 7B5
 Telephone : (819) 762-7100, Fax : (819) 762-7510

Date : 2020/02/05

Page : 5 of 6

Client : International Explorers and Prospectors Inc.	Folder : 56601
Addressee : Peter Colbert	Order number :
	No Envoi (Dispatch) :
	Project : GENET
Total number of samples : 43	

<u>Designation</u>	Zn-Dup AAT-7 ppm 2	Pb AAT-7 ppm 2	Pb-Dup AAT-7 ppm 2	Co AAT-7 ppm 2	Co-Dup AAT-7 ppm 2	Cu AAT-8 % 0.010	Zn AAT-8 % 0.010
A19380		16		29			
A19381		15		31			
A19382		16		30			
A19383		15		26			
A19384	853	14	13	25	24		
A19385		15		28			
A19386		14		27			
A19387		16		30			
A19388		15		28			
A19389		13		24			
A19390		12		31			
A19391		63		12			
A19392		60		12			
A19393		15		8			
A19394		11		10			
A19395		21		33			
A19396	3319	15	14	10	11		
A19397		25		15			
A19398		20		17			
A19399		24		29			

*** Certificate of analysis ***

Laboratoire Expert Inc.

750 A rue Saguenay
Rouyn-Noranda, Québec
Canada, J9X 7B5
Telephone : (819) 762-7100, Fax : (819) 762-7510

Date : 2020/02/05

Page : 6 of 6

Client : International Explorers and Prospectors Inc.	Folder : 56601
Addressee : Peter Colbert	Order number :
	No Envoi (Dispatch) :
	Project : GENET
Total number of samples : 43	

<u>Designation</u>	Zn-Dup AAT-7 ppm 2	Pb AAT-7 ppm 2	Pb-Dup AAT-7 ppm 2	Co AAT-7 ppm 2	Co-Dup AAT-7 ppm 2	Cu AAT-8 % 0.010	Zn AAT-8 % 0.010
A19400		9		12			
A19401		8		9			
A19402		17		19			

Drilled on , PAT-50163

hole IG20-21 from 27 to 114 meters

work report 3050 amended June 12 2020

Total program costs	19,650
Total meters in program	<u>87.0</u>
Program cost per meter	225.86

Total meters in program	<u>87.0</u>
Total drilling cost for program	<u>16,075</u>
Drilling cost per meter	184.77

Personel costs per meter 0.00

Assay costs per meter 20.69

Core shack costs per meter 20.40

overburden	ovb m	\$ cost /m	\$ amount
IG20-21		71	0
IG20-22		71	0
	<u>0</u>		Total 0

Coring	meters	\$ cost /m	\$ amount
IG20-21	73	69	5,037
IG20-21	14	70	980
	<u>87</u>		Total 6,017

Other drilling costs	\$/meter	\$ amount
	87	39 3,393
		<u>Total 3,393</u>

assay total cost for hole 21 and 22	# of samples	\$/sample
Lab Expert	3725.95	169 22
shipping	414	169 2
	<u>4139.95</u>	169 24

assays	# of samples	\$ cost /sample	\$ amount
IG20-21 assays	75	22	1,650
IG20-21 shipping	<u>75</u>	2	150
		Total	1,800

work report 3050 amended June 12 2020

Personel costs

Lionel Bonhomme	6 days @	500 per day	3,000	
W Schwang	2008331 Ont	1.5 day	1,275	
Scott Woolhead	34 hours @	35 per hour	1,190	
Peter Colbert	3 days @	400 per day	1,200	
			Total personel cost	6,665

Core shack rental and supplies

sampling supplies		275	
574395 Ont Inc	3 500 per week	1,500	
		Total	1,775 total

drill program breakdown for filings for PAT-50163

	meters drilled	drilling cost	personal	core shack	assay costs	shipping	
IG20-21	87	16,075	0	1,775	1,650	150	
IG20-22	0	0	0	0			
		87	16,075	0	1,775	1,650	150
						19,650	

Shared costs for Genex January 2020 holes IG20-21 and 22

Other drilling costs	@/unit	\$ amount
Core trays	83	8.1 672
mud	140	9.45 1,323
propane	16	100 1,600
Crown bit	2	566 1,132
casing	2	120 240
Mobilization		3,000
De-Mobilization		3,000
Dozer \$/hr	10	150 1,500
Drill time	3	230 690
		Total
		13,157
		meters drilled for 2 holes
		341
		extra costs per meter
		39