

We are committed to providing [accessible customer service](#).

If you need accessible formats or communications supports, please [contact us](#).

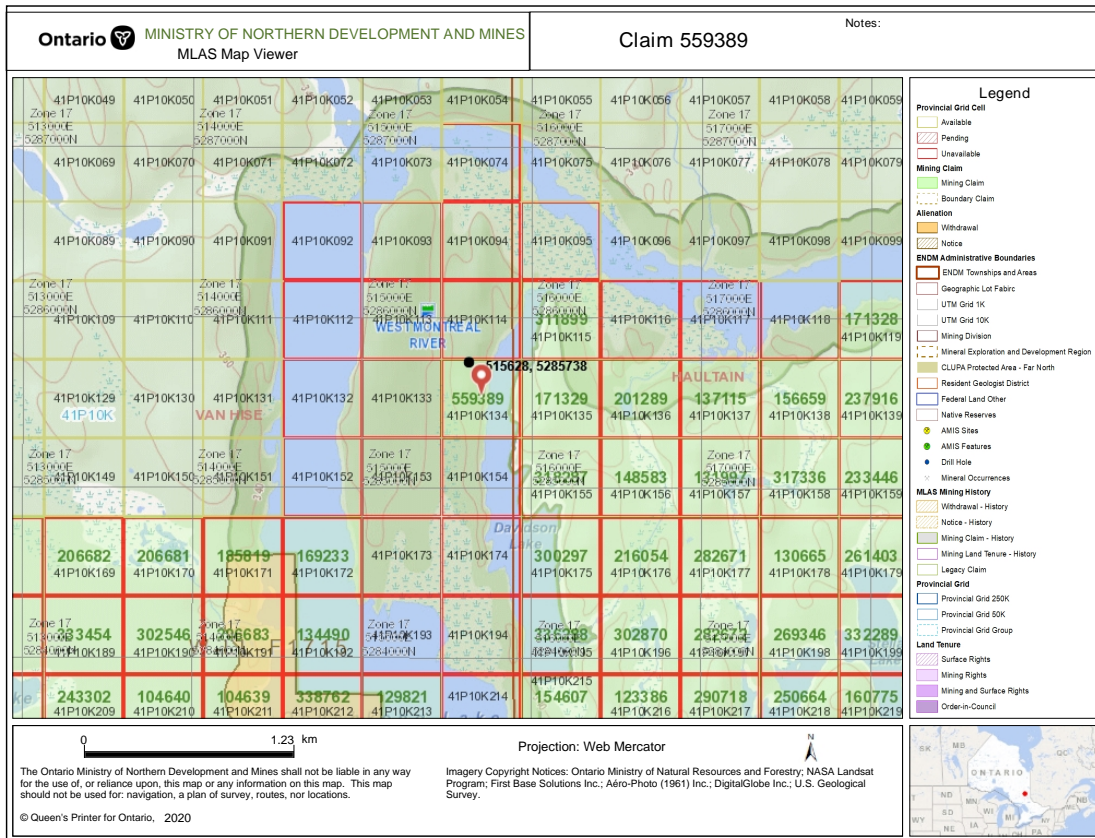
Nous tenons à améliorer [l'accessibilité des services à la clientèle](#).

Si vous avez besoin de formats accessibles ou d'aide à la communication, veuillez [nous contacter](#).

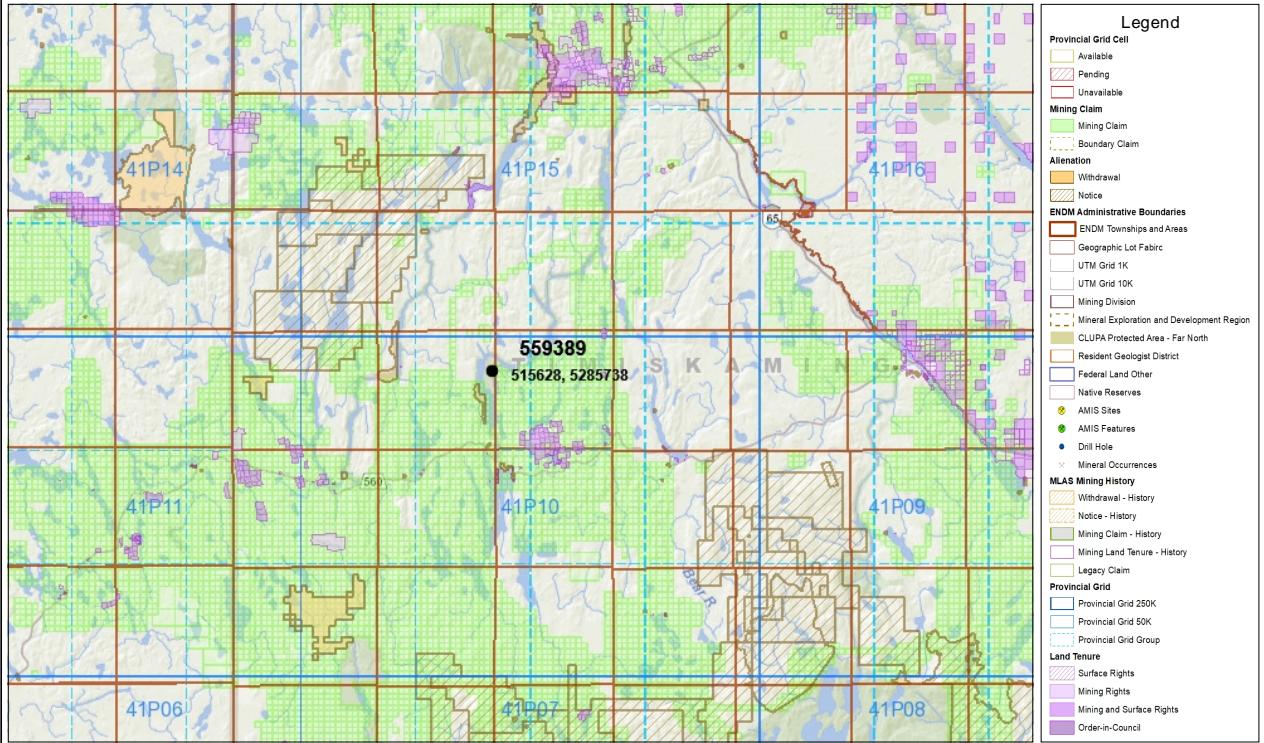
REPORT ON PROSPECTING VAN/HISE/ MILNER TWPS. LARDER LAKE DIV.

CLAIM
559389

SEPT. 24, 29
Oct. 9
2019



Submitted by Sherry Swain -- January 11/ 2020



Legend

- Provincial Grid Cell**
 - Available
 - Pending
 - Unavailable
- Mining Claim**
 - Mining Claim
 - Boundary Claim
- Alienation**
 - Withdrawal
 - Notice
- EMDM Administrative Boundaries**
 - EMDM Townships and Areas
 - Geographic Lot Fabric
 - UTM Grid 1K
 - UTM Grid 10K
 - Mining Division
 - Mineral Exploration and Development Region
 - CLUPA Protected Area - Far North
 - Resident Geologist District
 - Federal Land Other
 - Native Reserves
 - AMIS Sites
 - AMIS Features
 - Drill Hole
 - Mineral Occurrences
- MLAS Mining History**
 - Withdrawal - History
 - Notice - History
 - Mining Claim - History
 - Mining Land Tenure - History
 - Legacy Claim
- Provincial Grid**
 - Provincial Grid 250K
 - Provincial Grid 50K
 - Provincial Grid Group
- Land Tenure**
 - Surface Rights
 - Mining Rights
 - Mining and Surface Rights
 - Order-in-Council

0 19.75 km

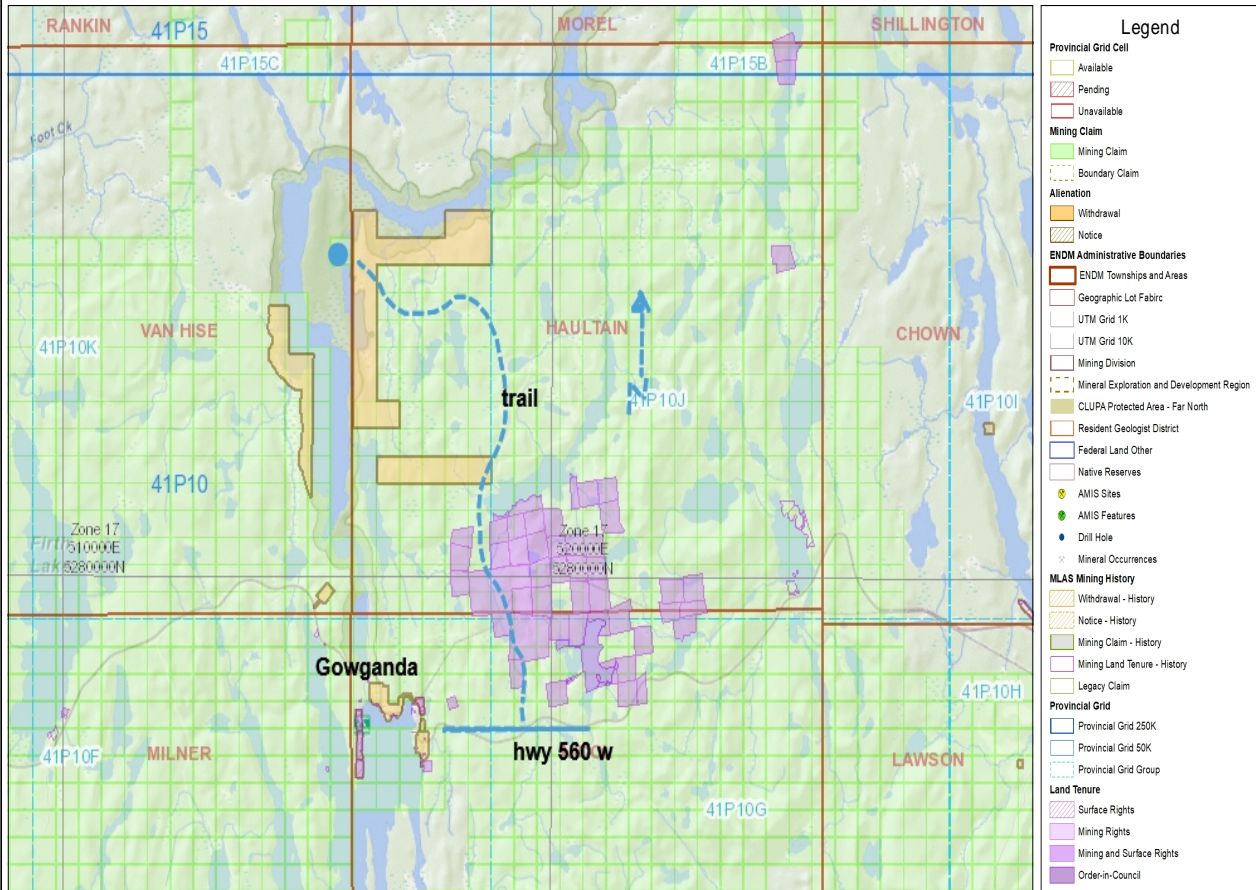
Projection: Web Mercator

The Ontario Ministry of Northern Development and Mines shall not be liable in any way for the use of, or reliance upon, this map or any information on this map. This map should not be used for: navigation, a plan of survey, routes, nor locations.

Imagery Copyright Notices: Ontario Ministry of Natural Resources and Forestry; NASA Landsat Program; First Base Solutions Inc.; Aéro-Photo (1961) Inc.; DigitalGlobe Inc.; U.S. Geological Survey.

© Queen's Printer for Ontario, 2020





0 4.94 km

Projection: Web Mercator



The Ontario Ministry of Northern Development and Mines shall not be liable in any way for the use of, or reliance upon, this map or any information on this map. This map should not be used for: navigation, a plan of survey, routes, nor locations.

Imagery Copyright Notices: Ontario Ministry of Natural Resources and Forestry; NASA Landsat Program; First Base Solutions Inc.; Aéro-Photo (1961) Inc.; DigitalGlobe Inc.; U.S. Geological Survey.

© Queen's Printer for Ontario, 2019



ACCESS FROM GOWGANDA

INDEX

Location Maps	pg.1,2,3
Location and access	5
Land status	5
Previous work	5
General geology.....	6
Log Sept.24/19	6
Location and sample descriptions Sept.24.....	7
Log Sept.29/19	8
Sample location and descriptions Sept.29	8
Oct. 9/19 log.....	9
Sample locations and descriptions Oct. 9	9
Map 1	10
Map 2.....	11
Assay certificate Dec.1/19	12
Assay invoice Oct.3/19	13
Assay Certificate Oct. 3/19.....	14
Conclusion.....	15
Photos.....	16, 17

Location and Access

The property is located in the Larder Lake Mining Div. , District of Timiskaming.

Map included shows the claim relative to Gowganda.

Access is shown on map via logging roads north of Hwy 560 2 km. East of Gowganda. The road becomes an ATV trail and ends at Davidson Lake.

A boat and motor are used to reach the west side of the claim.

The east side of the claim is accessible by walking the shoreline where outcrop is visible. The southern boundary of the claim is 164 m from the boat landing.

Land Status

The claim is held 100% in the name of Sherry Swain licence A48087.

Previous Work

1962- Diamond Drilling – Township of Van Hise . Work performed by Barron Diamond Drilling

1963- Report on Silverplace Mines Limited – geological mapping

1964- Mcphar Geophysics Report- IP survey for Silverplace Mines Ltd.

No assays were reported.

General Geology

The rocks on the claim are of Precambrian age.

East from Davidson Lake a narrow band of highly altered and steeply dipping basic and intermediate lavas, tuffs and schists run east across Haultain Twp.

Algonian granitic rocks which intruded the Keewatin are exposed north of the volcanics in Van Hise/ Haultain Twps.

North trending, narrow diabase dikes intrude the volcanics and granites. These dikes are Nipissing quartz diabase. The mineralization occurs within this trend on the claim.

A fault runs north along the east diabase contact from the Gowganda townsite and continues north to Davidson Lake.

Log-- Sept 24/19

7:30 am - Reach Davidson Lake shore 5283130 n 515981 e

8 am Reach southern claim boundary, sample and mapping takes place along shoreline until 3 pm.

3 pm samples are backpacked out to ATV - 4 pm

Work done by Sherry Swain and Fred Swain - licence A48086

Locations and Sample Descriptions -Sept 24/19

	Northing	Easting	
1.	5285306	515912	Pink/grey quartzite boulders, Lorraine formation
2.	5285348	515919	Pinkish syenite, contact with sediments 4x6" calcite blebs, very narrow calcite stringers
3.	5285367	515922	½ inch wide qtz/calcite vein in rubble at shore, dark vein material

4. 5285371	515923	Dark grey mafic rock with talc slips underneath contact with sediments at shoreline
5285381	515922	Pink quartzite with narrow bands of quartz pebbles
65285432	515873	Pink quartzite boulders , varying sizes to 4ft
7285569	515890	2 ft. wide band of qtz. pebble conglomerate cutting pink quartzite
8285644	515905	mineralized carbonate boulder 4 ft. by 3 ft.
9285713	515933	Pink quartzite

See maps 1 and 2

Log Sept.29/19

8:30 am - Reached Davidson Lake by Atv

9:00 am - Boated to start traverse on western shore near northern claim boundary

9:10 am - Started traverse east/west on claim line northern boundary

173 meters west of lake.

- Traversed south and west to shoreline until 3 pm sampling outcrop and shoveling debris out of pits and trenches

- Located old pit with debris from 1962, but could not find old drill sites

- 3 :30 pm – Boated to Atv trail

7 Sample Locations and Descriptions- Sept. 29

Northing	Easting
----------	---------

samples

1. 5285607 515616 Nipissing Diabase
2. 5285631 515677 shear zone with chalcopyrite blebs in quartz and red rock, fine pyrite in quartz seams.
3. 5285652 515622 largest pit located approximately 20 ft. long by 6 ft wide by 12 ft deep. Shear zone about 2 ft wide striking east/west. Massive chalcopyrite with ethyrite . Lots of debris has to be removed by hand.
4. 5285657 515631 Pit -3 ft wide by 5 ft long with mineralized quartz veins in diabase. The veining had blebs of chalcopyrite.
5. 5285670 515616 Pit – 5 ft wide by 5ft long in diabase with minor pyrite
6. 5285650 515622 Sampled old rock dumps blown out of pit. Chalcopyrite and cobalt bloom in quartz/calcite veins in diabase.
7. 5285681 515645 Location of trench 25 ft. long by 5 ft. wide with disseminated pyrite in diabase.

Oct. 9- Log

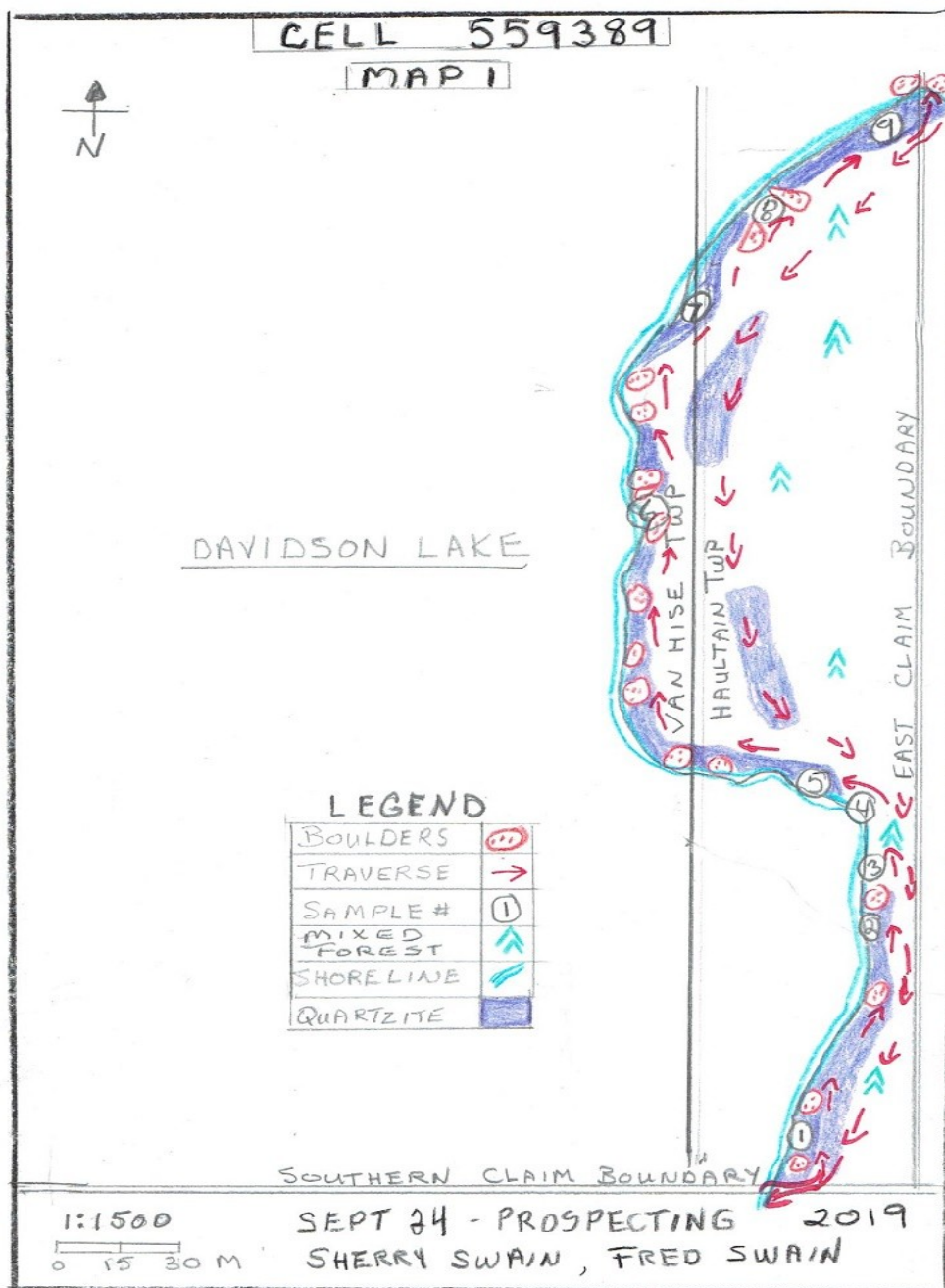
8:30 am- Arrived at Davidson lake where boat is located by Atv.

9:00 am- Boated to west shore of lake 30 meters south of northern claim boundary and started traverses on claim.

3:00 pm- returned to boat and crossed lake back to ATV trail

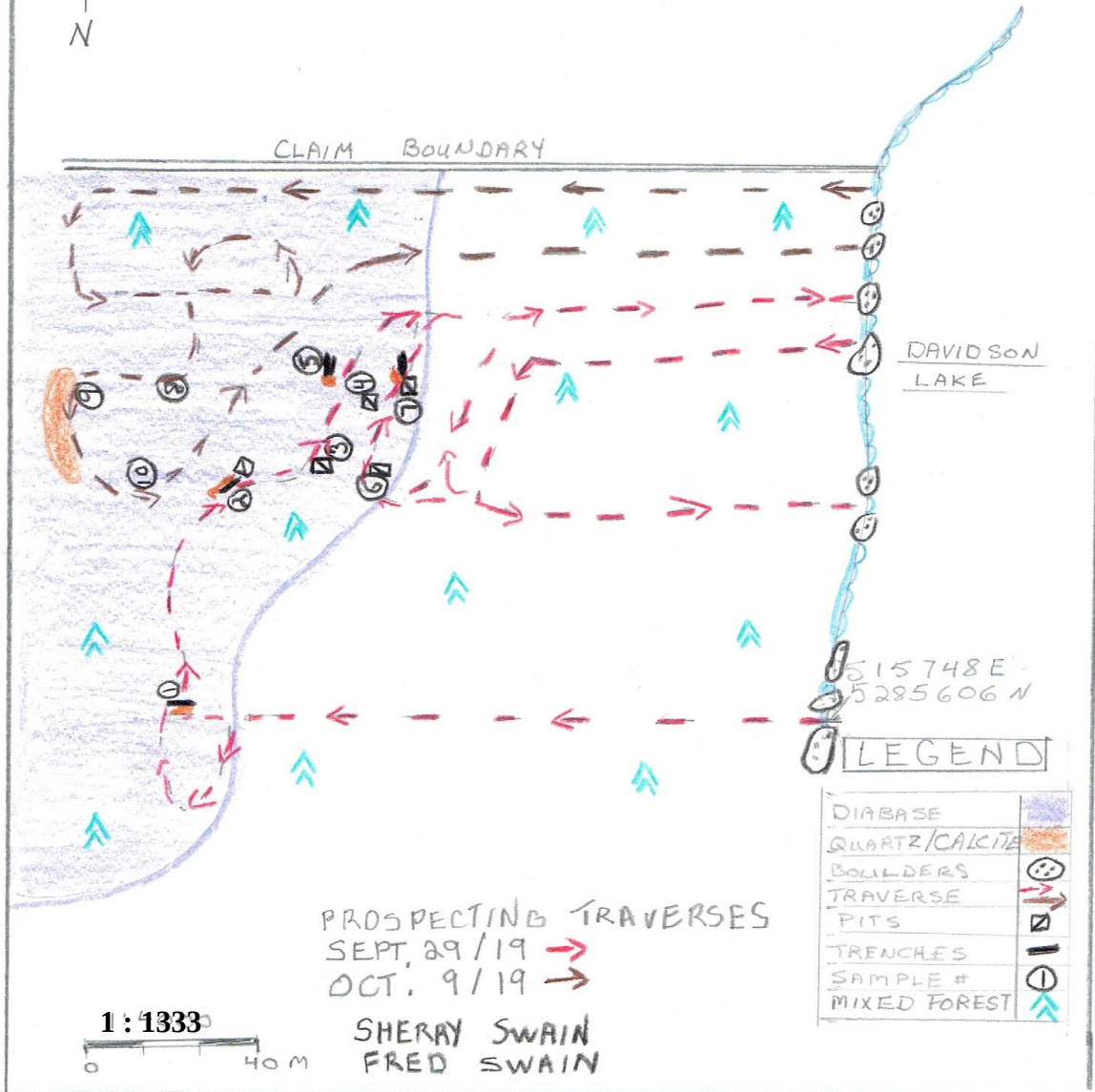
Sample locations Oct. 9

	NORTHING	EASTING	
Sample 8-	5285690	515661	diabase
Sample 9 -	5285700	515628	sulphides in quartz/carbonate
Sample 10 -	5285667	515604	grey rock with pink calcite and narrow quartz stringers with fine pyrite



CELL # 559389

MAP 2

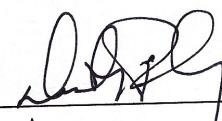


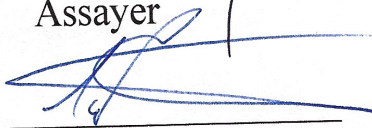
Certificate of Analysis

Sherry Swain

We certify that the assay results in the following
Certificates are factual and true.

Certificate # 23912

Certified by: 
Assayer

Certified by: 
President/Manager

Date: December 12, 2019

Disclaimer: The results included on this report relate only to the items tested.
The Certificate of Analysis should not be reproduced except in
full, without the written approval of the laboratory.



1 Presley St., P.O. Box 699
 Cobalt, ON P0J 1C0
 PH: (705) 679-5500 FAX: (705) 679-5519

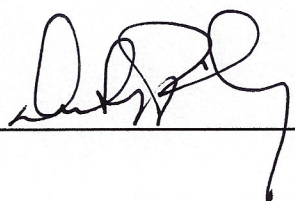
ASSAY CERTIFICATE #: 23911	CLIENT: Swain, Sherry
Date of Issue: October 10, 2019	Job #: 0-139
Sample Description: Rocks	Shipment Date: October 4, 2019

QD28 Certificate of Analysis Apr 2012 Rev (3)

Sample #	Au PPB
DL-1	84.00
DL-2	>.001

	Au Oz/ton	Au g/tonne
Std OxK 136	0.126	3.937
Blank	<.001	<.03

2 Au

Assayer: 

Anomalous gold values from 3 assays are encouraging as the 3 different rock types are involved.

Historic drilling records did not indicate any assays for gold and the same rock types are found in drill core.

An extensive sampling program is suggested in order to further explore the results of samples D1 ,D4 and D5.

Old pits should be cleaned out and sampled.

Further exploration to locate old drill holes which may have old core present should be done by grid search.

15

16



Davidson Lake



