

We are committed to providing [accessible customer service](#).

If you need accessible formats or communications supports, please [contact us](#).

Nous tenons à améliorer [l'accessibilité des services à la clientèle](#).

Si vous avez besoin de formats accessibles ou d'aide à la communication, veuillez [nous contacter](#).

GRASS ROOT  
PROSPECTING REPORT  
ON BROOKS LAKE  
PROJECT  
CLAIM CELL # 530969  
BLOUNT TWP.  
COCHRANE ONTARIO  
CANADA  
**PORCUPINE DIVISION**

**By Alain J G Vallée**

This report covers the Grassroot exploration of Cell Claim # 530969. From July 16, 2019 to May 30, 2020.

I Alain J G Vallée staked, registered, the cell claim # 530969. September 9, 2018. Located in the area of Gardiner, Blount Township, Cochrane, Ontario, Canada. Located North of Cochrane Ontario Canada.

The area is accessed by truck trailer and ATV. Hwy 579 passes through the cell claim on the way to Gardiner, Ontario.

Observations:

On this cell claim there is bedrock that was uncovered by the logging activity. In this project there is a cone shaped anomaly inside a bigger anomaly according to maps.

Bedrock is white igneous and is magnetic. There are some well rounded boulders, pail in colour and magnetic. There's also a quartz breccia chunk found on the clay surface.

Where bulldozers scraped the winter logging area. This cell claim is mostly forested. South of Hwy 579 of the cell claim is covered by private land mostly except for a sliver on the South East. The North East part of the cell claim there is a small lake with bait minnows. The shore of the lake is mossy floating bog. Red clay, Yellow clay and bog filled ravines are the common site on this cell claim.

July 16, 2019.

I drove 9.3 Km by ATV and truck to Cell Claim # 530969, from home LUP on Cell Claim # 564361. I walked with the GPS 3 hours mapping boulders and main access points of the cell claim. I traveled 9.3 Km by truck and ATV to home LUP on Cell Claim # 564361.

July 17, 2019.

I drove 9.3 Km by ATV and truck to Cell Claim # 530969, from home LUP on Cell Claim # 564361. I walked with the GPS 3 hours mapping boulders and main access points of the cell claim and looked at bulldozed ground from winter logging. Took pictures. Drove to Cochrane by truck

35.59 Km. for supplies.

July 18, 2019.

Got supplies.

July 19, 2019.

Got food supplies and Gas. I drove 35.62 Km to Cell Claim # 530969 by truck. I walked with GPS and looked at boulders and rocks, 6 hours. I drove the truck 6.9 Km to parking lot on Florence Lake Road and drove 2.4 Km by ATV to home LUP on Cell Claim # 564361.

July 20, 2019.

I drove 2.4 Km by ATV to the parking lot on Florence Lake Road. I drove the truck 6.9 Km to Cell Claim # 530969. I walked with GPS 3 hours mapping edge of the lake on the Cell Claim. I traveled 6.9 Km by truck to the parking lot on Florence Lake Road. I drove 2.4 Km by ATV to home LUP on Cell Claim # 564361.

July 21, 2019.

I traveled 2.4 Km by ATV to the parking lot on Florence Lake Road. I drove 6.9 Km by truck to Cell Claim 530969. Walked with GPS 3 hours. Mapped the north east side of the Hwy where there is an old house foundation. I drove the truck 6.9 Km to the parking lot on Florence Lake Road. I drove the ATV 2.4 Km to home LUP on Cell Claim # 564361.

July 23, 2019.

I drove 2.4 Km by ATV to the parking lot on Florence Lake Road. I traveled 42 Km by truck to Cochrane for supplies

July 26, 2019.

Got food, supplies and gas. I traveled 42 Km to parking lot on Florence Lake road. I drove 2.48 Km by ATV to home LUP on Cell Claim # 564361.

July 28, 2019.

I drove 2.4 Km by ATV to the parking lot on Florence Lake Road. I drove 6.9 Km by truck to Cell Claim # 530969. Walked with GPS and looked and bulldozed area from the winter logging 1 hour. Drove 6.9 Km by truck to parking lot on Florence Lake Road and 2.4 Km by ATV to home LUP on Cell Claim # 564361.

July 29, 2019.

I drove 2.4 Km by ATV to the parking lot on Florence Lake Road. Drove to Cochrane by truck 42 Km. for supplies and order medicine.

May 13, 2020.

Got food and supplies.

May 18, 2020.

Headed out to grass root explore cell claim # 530969. I traveled 42 Km to parking lot on Florence Lake Road by truck and 2.4 Km by ATV to home LUP on Cell Claim # 564361.

May 19, 2020.

Traveled 2.4 Km to parking lot on Florence Lake Road by ATV. I traveled 6.9 Km to Cell Claim # 530969 by truck. Programmed GPS 1 hour. I walked with the GPS 2 hours. Drove 9.3 Km to Exploration Base Camp on Cell Claim #

567124 and to parking lot on Florence Lake Road by truck. I drove 2.27 Km by ATV to home LUP on Cell Claim # 564361.

May 20,2020.

I traveled 2.4 Km to the parking lot on Florence Lake Road by ATV. Drove 6.9 Km to Cell Claim # 530969 by truck. I walked with the GPS 4 hours. Drove 6.9 Km by truck to parking lot on Florence Lake Road and 2.4 Km by ATV to home LUP on Cell Claim # 564361.

May 21, 2020.

I traveled 2.4 Km by ATV to the parking lot on Florence Lake Road. I drove 6.9 Km by truck to Cell Claim # 530969. I walked with GPS 3 hours. I traveled 6.9 Km back to the parking lot on Florence Lake Road by truck. I drove 2.4 Km by ATV to home LUP on Cell Claim # 564361.

May 23,2020.

I traveled 2.4 Km by ATV to the parking lot on Florence Lake Road. I drove 6.9 Km to Cell Claim # 530969 by truck. I walked with GPS 3.5 hours and looked at rocks. I traveled 6.9 Km to the parking lot on Florence Lake Road by truck. I drove 2.4 Km by ATV to home LUP on Cell Claim # 564361.

May 26, 2020.

I traveled 2.4 Km by ATV to the parking lot on Florence Lake Road. I traveled 42 Km to Cochrane for supplies and do laundry. There is no propane in Cochrane after 4pm due

to COVID 19. Many of my supplies needed are hard to get or one must order and or curb side pick up. I filled the truck and traveled 46 Km to the parking lot on Florence Lake Road. I traveled 2.4 Km by ATV to home LUP on Cell Claim # 564361.

May 28, 2020.

I traveled 2.4 Km by ATV to the parking lot on Florence Lake Road. I drove the truck 6.9 Km to Cell Claim # 530969. I walked with GPS and entered and double check coordinates of boulders and bed rock uncovered by logging activity. 4 hours. I drove the truck 6.9 Km to the parking lot on Florence Lake Road. I drove 2.4 Km by ATV to home LUP on Cell Claim # 564361.

May 29, 2020.

I traveled 2.4 Km by ATV to the parking lot on Florence Lake Road. I drove 6.9 Km by truck to Cell Claim # 530969. I walked with GPS 2.5 hours. Drove the truck 6.9 Km to parking lot on Florence Lake Road. I drove 2.4 Km by ATV to home LUP on Cell Claim # 564361.

May 30, 2020.

Traveled 2.4 Km by ATV to parking lot on Florence Lake Road. I drove the truck 6.9 Km to Cell Claim # 530969. I walked with GPS 5.5 hours. I traveled 6.9 by truck to the parking lot on Florence Lake Road. I drove the ATV 2.4 Km to home LUP on Cell Claim # 564361.





(above) photo of bedrock.

GPS coordinates of Bedrock

UTM 17 U 0496475 , 5460784

GPS coordinates of boulders

UTM 17 U 0496466 , 5460784

UTM 17 U 0496465 , 5460785

UTM 17 U 0496463 , 5460785

UTM 17 U 0496444 , 5460791

UTM 17 U 0496438 , 5460803

UTM 17 U 0496526 , 5460701

UTM 17 U 0496526 , 5460701

UTM 17 U 0496534 , 5460619

UTM 17 U 0496567 , 5460590

UTM 17 U 0496710 , 5460569

Old House foundation, UTM 17 U 0496704 , 5460575

Old Holes on hill tops

UTM 17 U 0496495 , 5460593

UTM 17 U 0496530 , 5460606

On Pg. 10, 11, 12 and 13 are Photos of the GPS, area traveled and explored on the cell claim # 530969.

I Alain G, J, Vallee have worked 44.5 hours. 567 Km driven.

License # 1011129

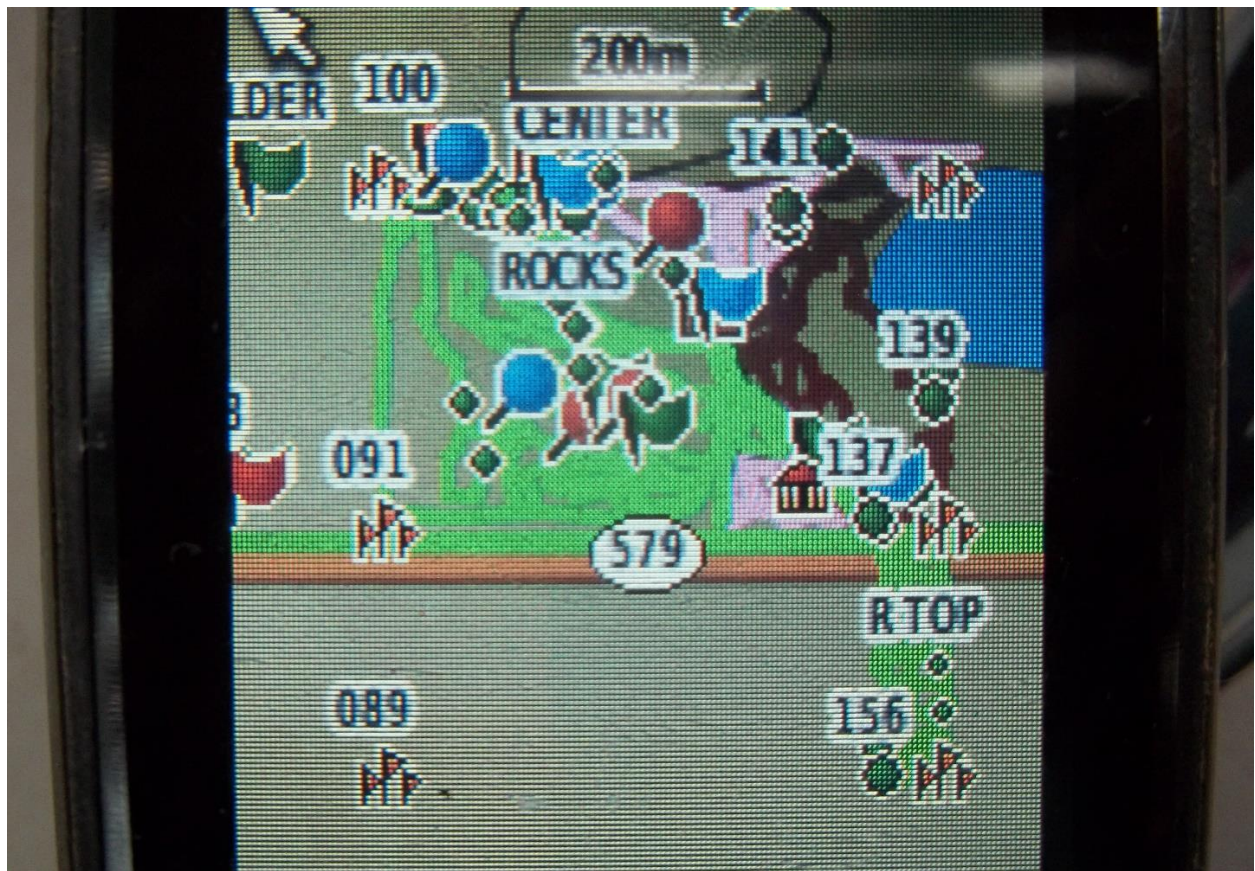
Client # 410810

Report began July 16, 2019. To May 30, 2020.





(above) quartz Breccia. UTM17U 0496637,5460726

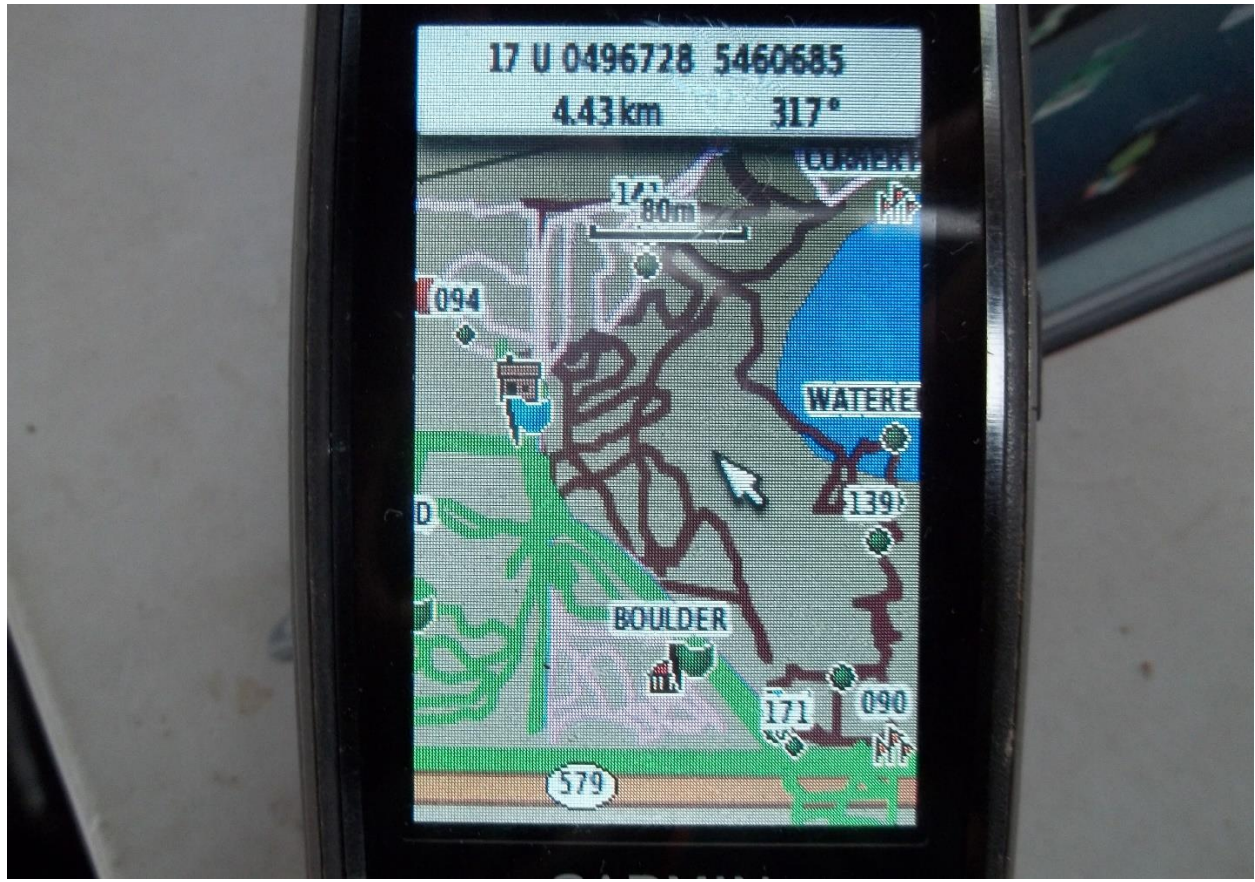


(above) Area traveled on cell claim # 530969.



(above) Area traveled on cell claim # 530969.



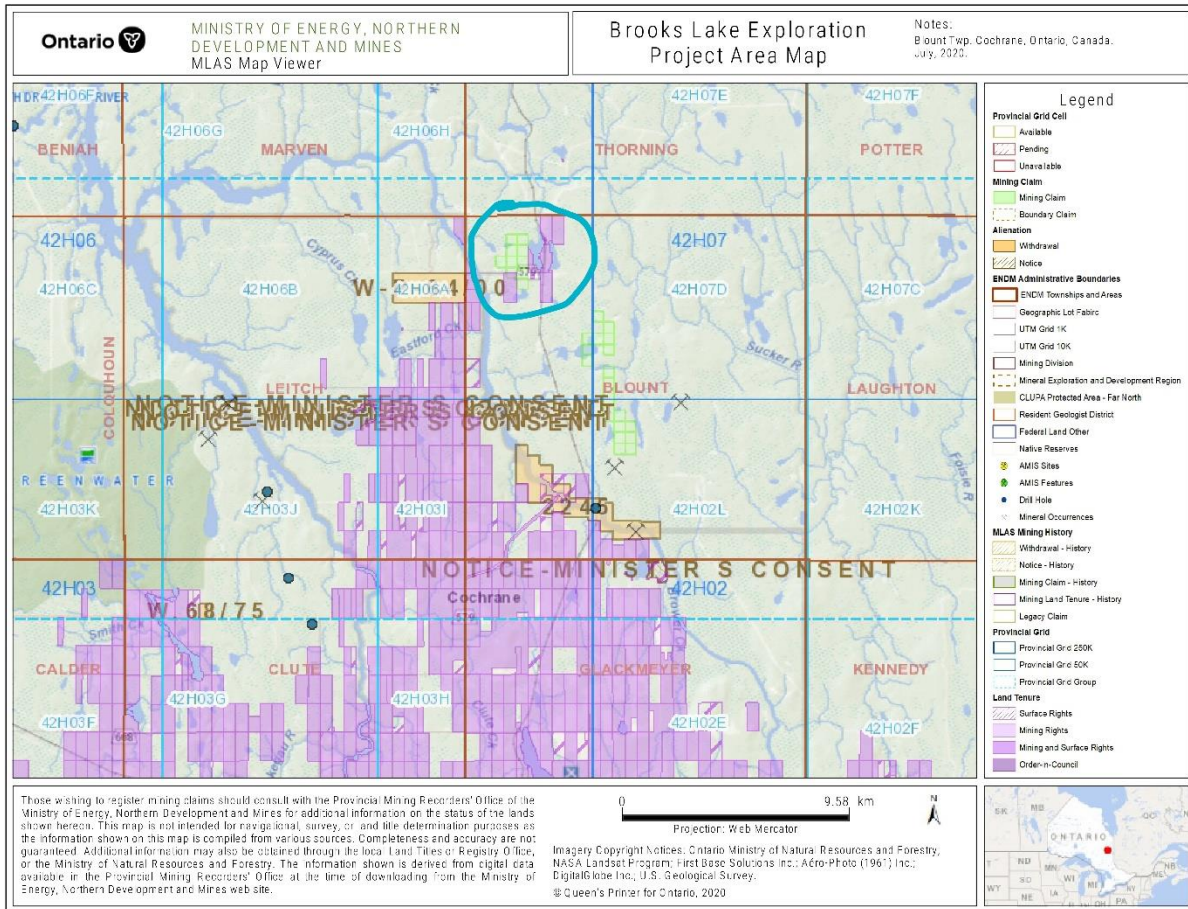


(above) Area traveled on cell claim # 530969.

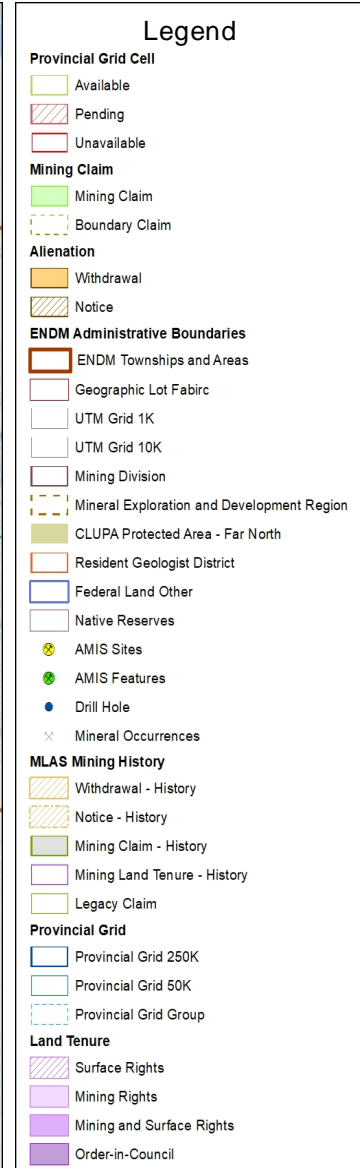
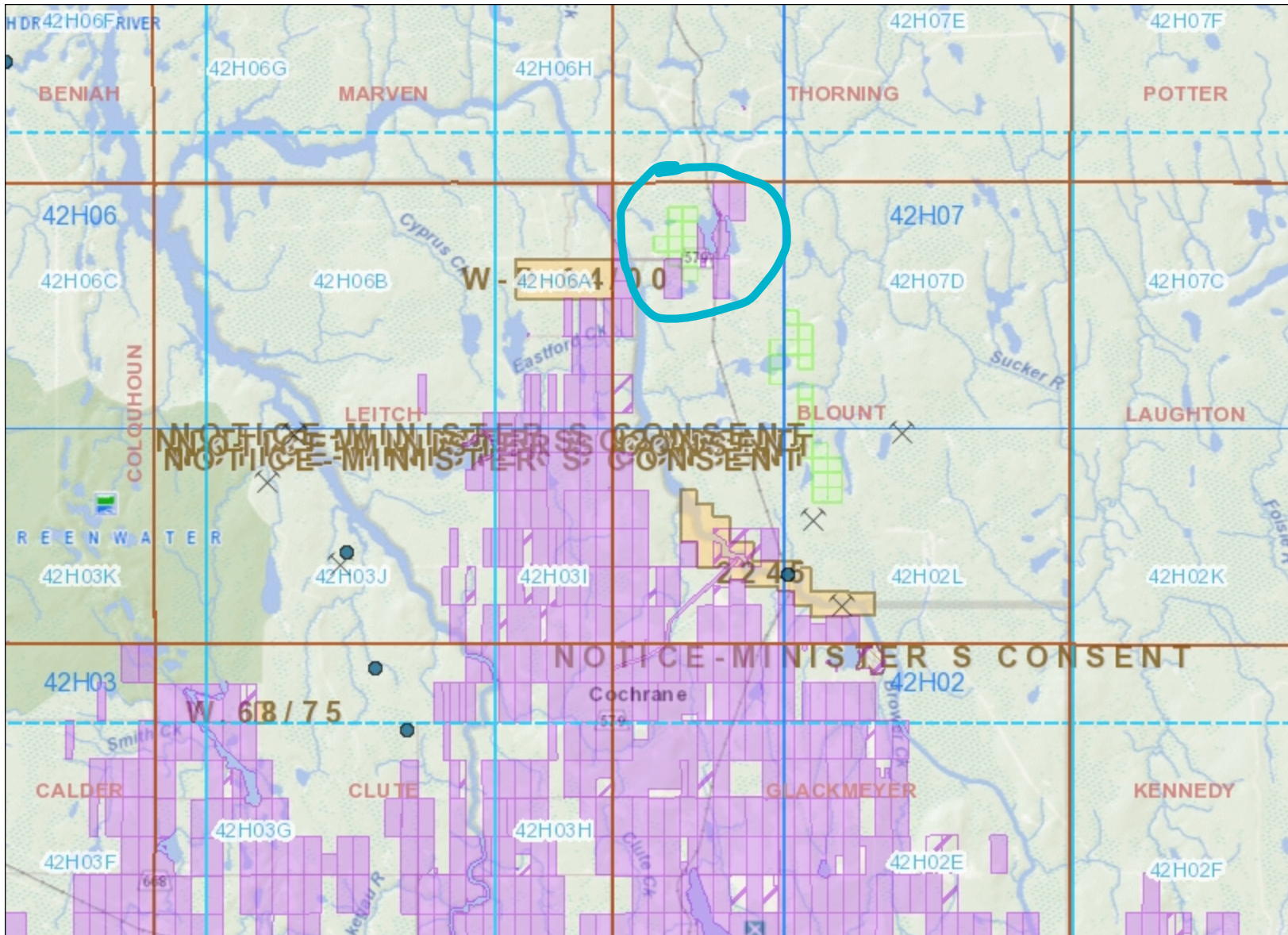


(above) Area traveled on cell claim # 530969.





(above) Brooks Lake Exploration Projects Area Map.



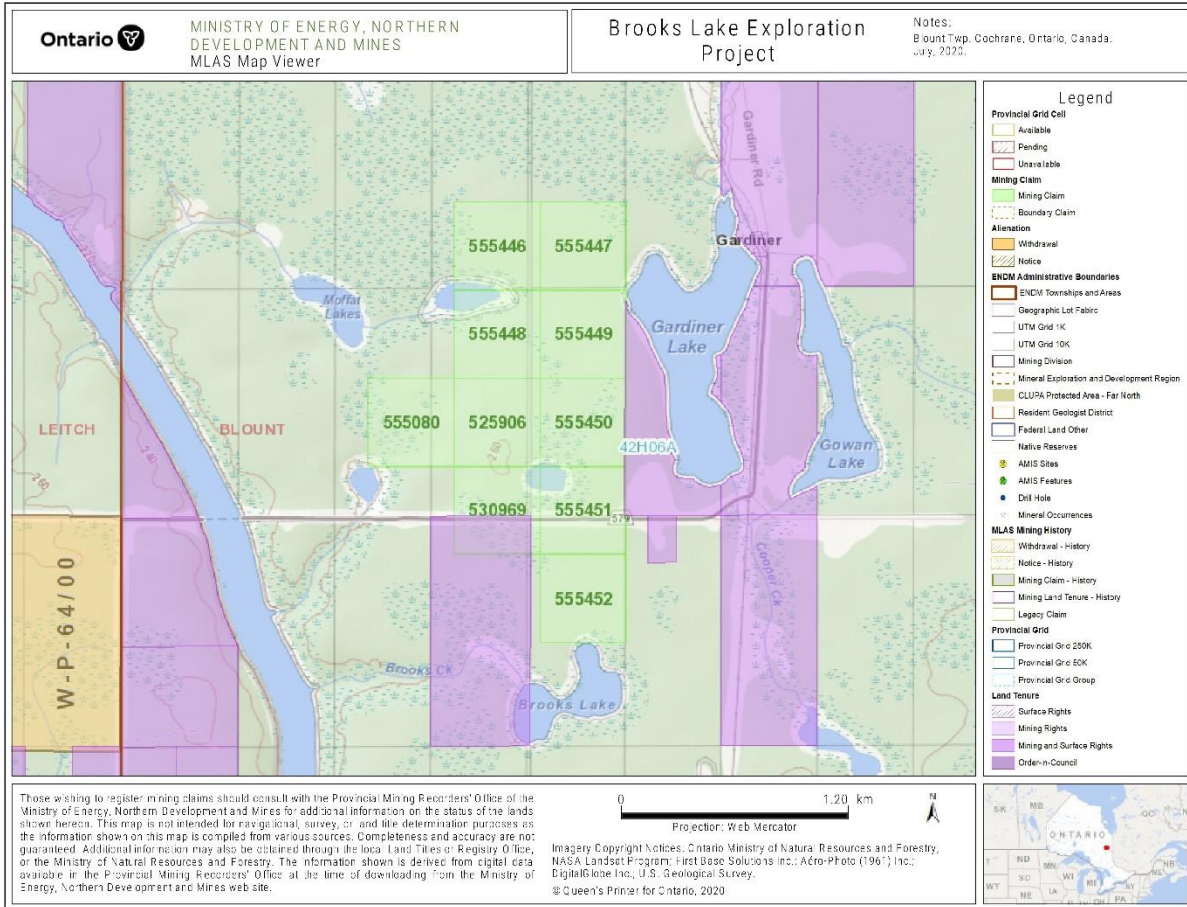
Those wishing to register mining claims should consult with the Provincial Mining Recorders' Office of the Ministry of Energy, Northern Development and Mines for additional information on the status of the lands shown hereon. This map is not intended for navigational, survey, or land title determination purposes as the information shown on this map is compiled from various sources. Completeness and accuracy are not guaranteed. Additional information may also be obtained through the local Land Titles or Registry Office, or the Ministry of Natural Resources and Forestry. The information shown is derived from digital data available in the Provincial Mining Recorders' Office at the time of downloading from the Ministry of Energy, Northern Development and Mines web site.



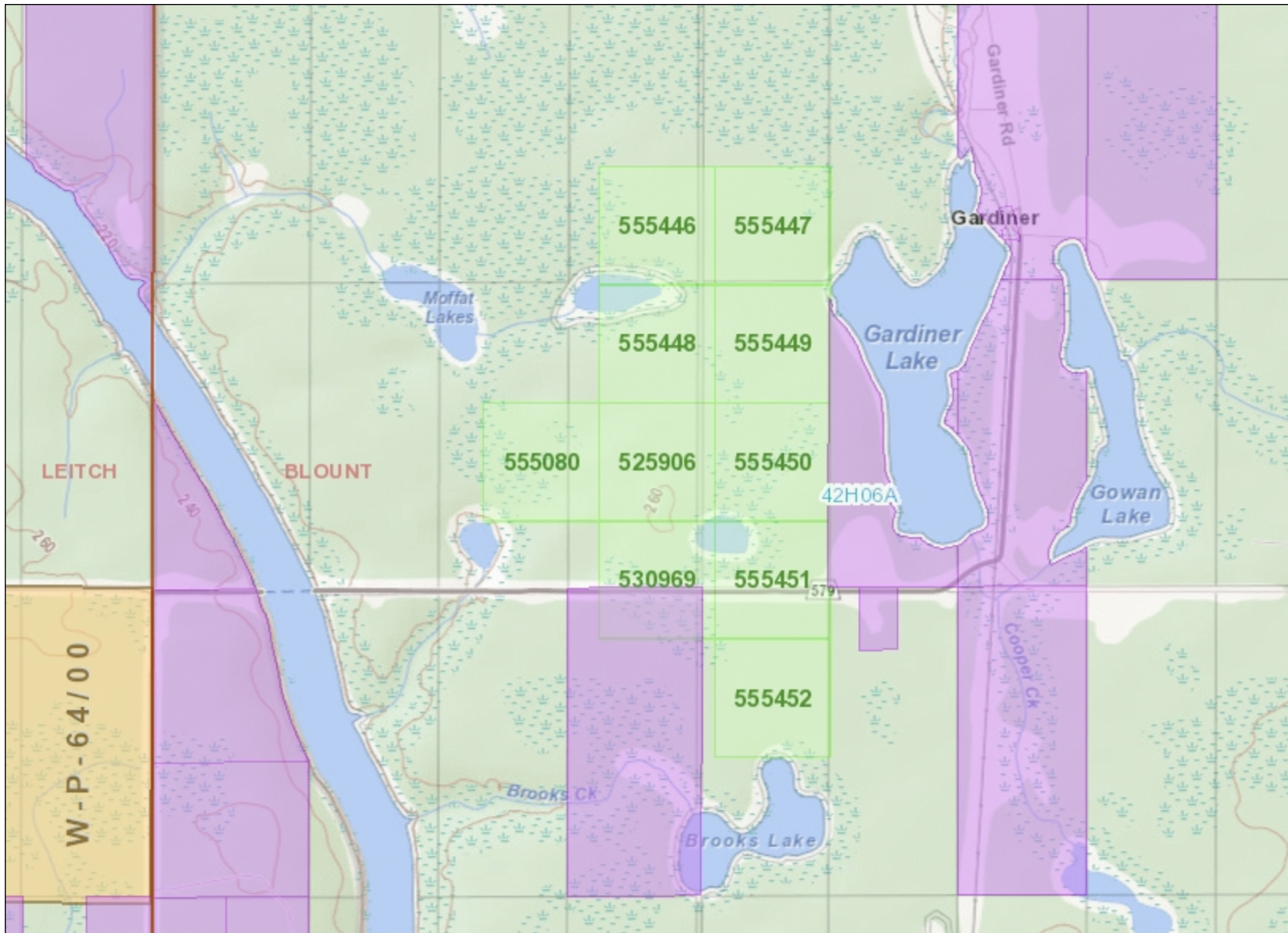
Imagery Copyright Notices: Ontario Ministry of Natural Resources and Forestry; NASA Landsat Program; First Base Solutions Inc.; Aéro-Photo (1961) Inc.; DigitalGlobe Inc.; U.S. Geological Survey.  
© Queen's Printer for Ontario, 2020







(above) Map of Brooks Lake Exploration Project.



### Legend

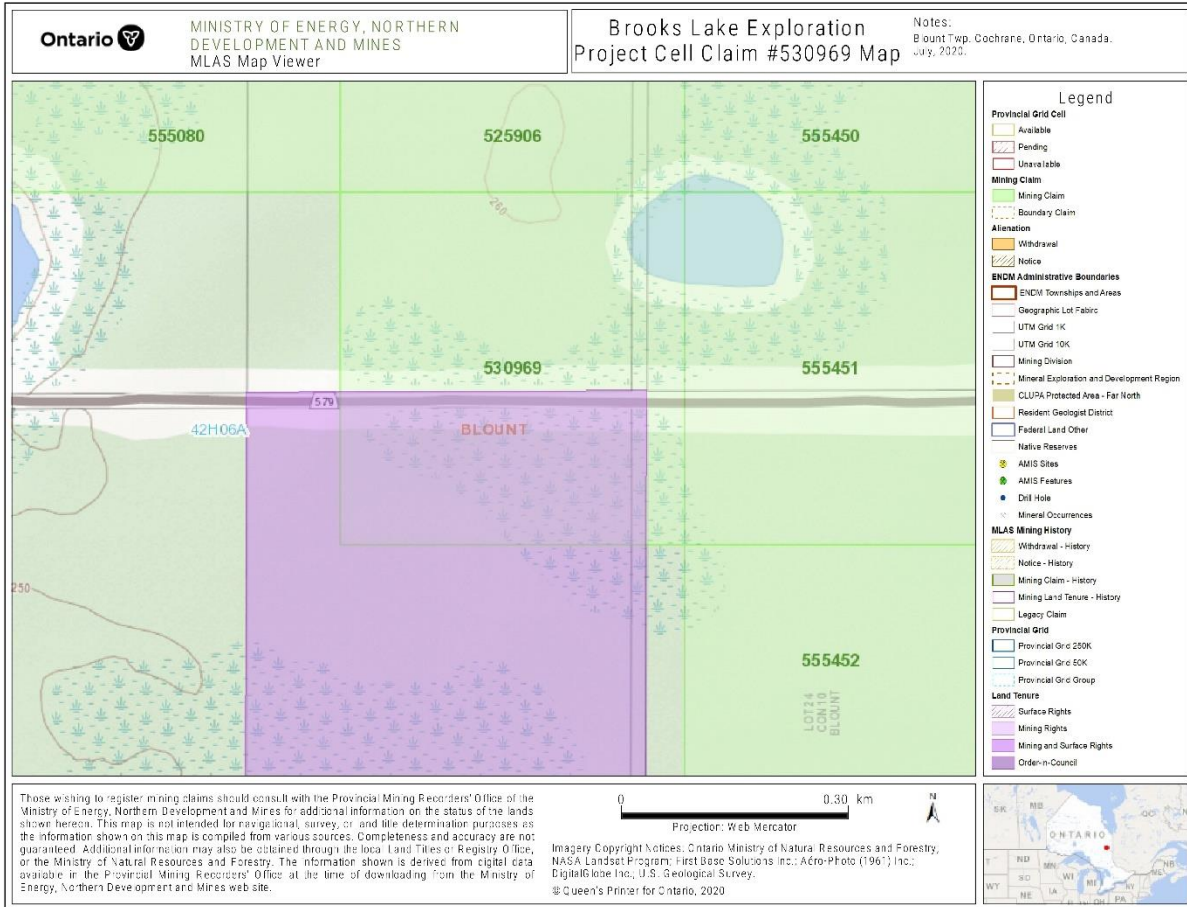
- Provincial Grid Cell**
  - Available
  - Pending
  - Unavailable
- Mining Claim**
  - Mining Claim
  - Boundary Claim
- Alienation**
  - Withdrawal
  - Notice
- ENDM Administrative Boundaries**
  - ENDM Townships and Areas
  - Geographic Lot Fabric
  - UTM Grid 1K
  - UTM Grid 10K
  - Mining Division
  - Mineral Exploration and Development Region
  - CLUPA Protected Area - Far North
  - Resident Geologist District
  - Federal Land Other
  - Native Reserves
- AMIS Sites**
  - AMIS Sites
  - AMIS Features
  - Drill Hole
  - Mineral Occurrences
- MLAS Mining History**
  - Withdrawal - History
  - Notice - History
  - Mining Claim - History
  - Mining Land Tenure - History
  - Legacy Claim
- Provincial Grid**
  - Provincial Grid 250K
  - Provincial Grid 50K
  - Provincial Grid Group
- Land Tenure**
  - Surface Rights
  - Mining Rights
  - Mining and Surface Rights
  - Order-in-Council

Those wishing to register mining claims should consult with the Provincial Mining Recorders' Office of the Ministry of Energy, Northern Development and Mines for additional information on the status of the lands shown hereon. This map is not intended for navigational, survey, or land title determination purposes as the information shown on this map is compiled from various sources. Completeness and accuracy are not guaranteed. Additional information may also be obtained through the local Land Titles or Registry Office, or the Ministry of Natural Resources and Forestry. The information shown is derived from digital data available in the Provincial Mining Recorders' Office at the time of downloading from the Ministry of Energy, Northern Development and Mines web site.



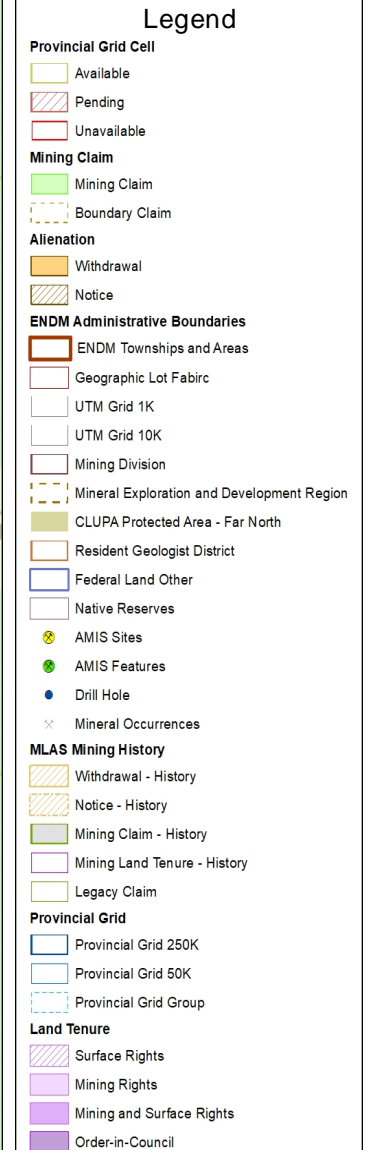
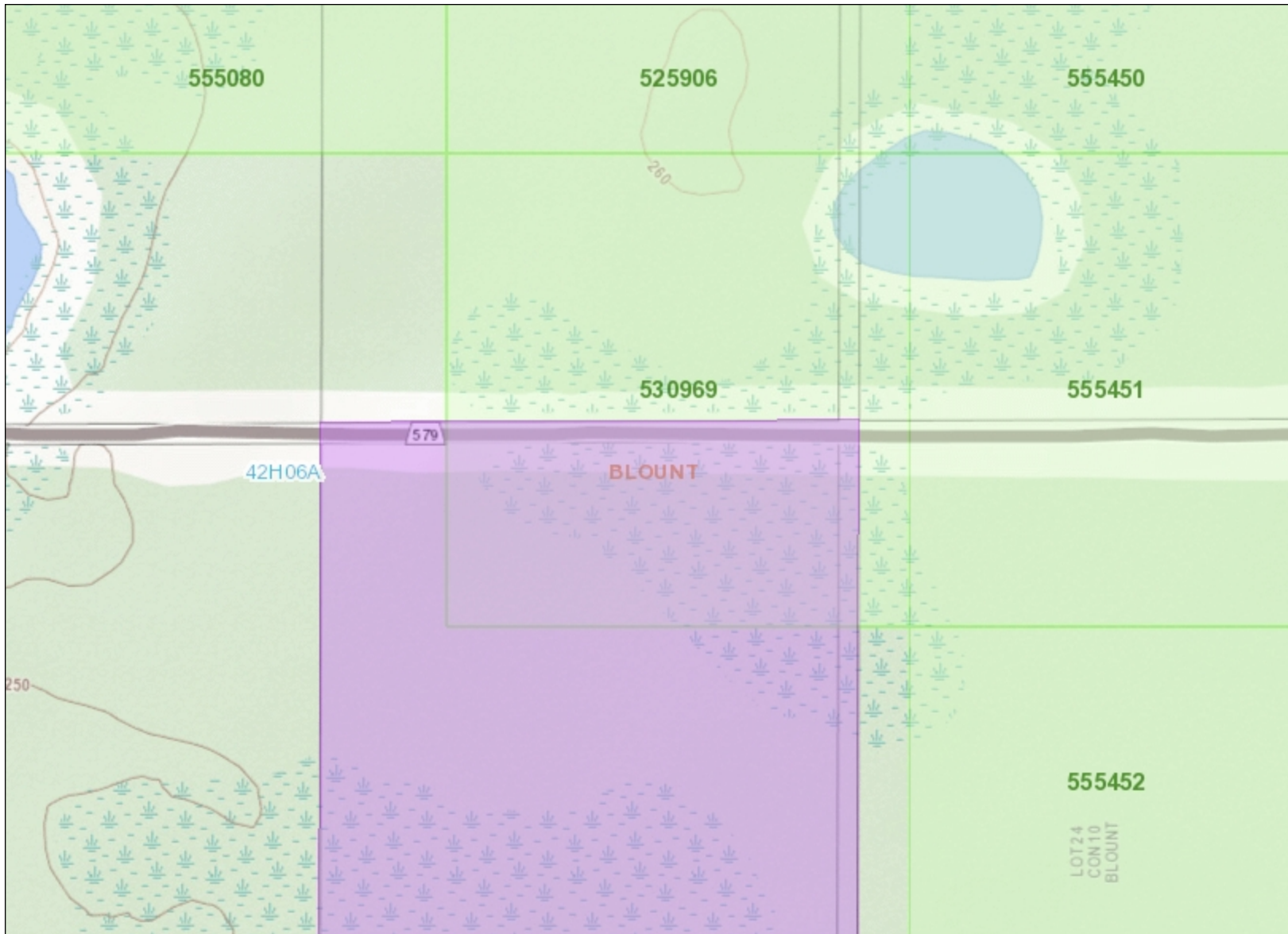
Imagery Copyright Notices: Ontario Ministry of Natural Resources and Forestry; NASA Landsat Program; First Base Solutions Inc.; Aéro-Photo (1961) Inc.; DigitalGlobe Inc.; U.S. Geological Survey.  
© Queen's Printer for Ontario, 2020





(above) Map of Cell Claim # 530969.





Those wishing to register mining claims should consult with the Provincial Mining Recorders' Office of the Ministry of Energy, Northern Development and Mines for additional information on the status of the lands shown hereon. This map is not intended for navigational, survey, or land title determination purposes as the information shown on this map is compiled from various sources. Completeness and accuracy are not guaranteed. Additional information may also be obtained through the local Land Titles or Registry Office, or the Ministry of Natural Resources and Forestry. The information shown is derived from digital data available in the Provincial Mining Recorders' Office at the time of downloading from the Ministry of Energy, Northern Development and Mines web site.

0 0.30 km

Projection: Web Mercator

Imagery Copyright Notices: Ontario Ministry of Natural Resources and Forestry; NASA Landsat Program; First Base Solutions Inc.; Aéro-Photo (1961) Inc.; DigitalGlobe Inc.; U.S. Geological Survey.

© Queen's Printer for Ontario, 2020

