

We are committed to providing [accessible customer service](#).

If you need accessible formats or communications supports, please [contact us](#).

Nous tenons à améliorer [l'accessibilité des services à la clientèle](#).

Si vous avez besoin de formats accessibles ou d'aide à la communication, veuillez [nous contacter](#).

WORK REPORT
on the
SUMMER 2018 SURFACE PROSPECTING PROGRAM
DELLELCE PROPERTY
KATRINE TOWNSHIP, ONTARIO
NEW FOUND GOLD CORP.

Ken Rattee, BSc
Pamela Iraheta Munoz, BSc
Project Geologist
January 4, 2019

TABLE OF CONTENTS

INTRODUCTION	1
LOCATION AND ACCESS	1
DELLELCE PROPERTY	2
NORWOOD AREA	4
VALLILLEE AREA	6
FLOOD / WOOD AREA	8
APPENDIX A – DELLELCE WORK AREA CLAIM LIST	
APPENDIX B – DELLELCE PROPERTY CLAIM LIST	
APPENDIX C – DELLELCE AREA ASSAY TABLE	
APPENDIX D – DELLELCE 2018 RECONNAISSANCE WORK LOG	
APPENDIX E – CERTIFICATES OF ANALYSIS	
APPENDIX F – GARMIN 62S SPECIFICATIONS	
APPENDIX G – CERTIFICATE OF AUTHORSHIP	

MAP SUPPLEMENT FILES: (see attached)

- 1) DELLELCE PROPERTY – NEW FOUND GOLD CORP. (PROPERTY OUTLINE)**
- 2) DELLELCE-VALLILLEE PROPERTY – NORWOOD AREA SUMMER 2018 TRAVERSES 1:2500**
- 3) DELLELCE-VALLILLEE PROPERTY – NORWOOD AREA SUMMER 2018 GRAB SAMPLES 1:2500**
- 4) DELLELCE-VALLILLEE PROPERTY – VALLILLEE AREA SUMMER 2018 GRAB SAMPLES and TRAVERSE 1:5000**
- 5) DELLELCE-VALLILLEE PROPERTY – FLOOD and WOOD AREAS SUMMER 2018 GRAB SAMPLES and TRAVERSE 1:5000**

INTRODUCTION

Between August 7, 2018 to September 4, 2018 New Found Gold Corp conducted a prospecting and reconnaissance program over its Dellelce property in Katrine Township. Refer to Appendix 1, Dellelce Work Area Claim List, for the claim cell numbers the work was performed on. The property lies approximately 14 kilometres north of the town of Larder Lake, Ontario. The property has a surface area of 624 hectares and contains 15 single cell claims and 22 encumbered and boundary cell claims. Refer to Appendix 2, Dellelce Property Claim List. The purpose of the exploration reconnaissance was to prospect for gold or base metal mineralization based on known gold or base metal showings and favourable geology to ascertain the quality of the old showings and explore for previously undiscovered showings. The work was conducted in the field by Ken Rattee (New Found Gold, Project Geologist), Pamela Iraheta-Muniz (New Found Gold, Field Geologist), Greg Matheson (New Found Gold, Geologist) and Chris Williams (Labourer/Boatman). Refer to Appendix 4, Dellelce 2018 Reconnaissance Work Log. The property is under MENDM Permit/Plan #PR-18-000168

LOCATION AND ACCESS

The property is located approximately 14 kilometres north of the town of Larder Lake, Ontario. The Dellelce property is accessible from Larder Lake by traveling west for 13 kilometres along Highway 66 to the Highway 672 junction. Highway 672 is followed north for 10.5 kilometres to the Howard Lake Access Road which is followed east for 3 kilometres to the Howard Lake boat launch. From the boat launch via boat, the Howard Lake – Misema River waterway chain is followed to the south and west for 6.5 kilometres to access the showings adjacent to the North Arm of Misema Lake and 9 kilometres to access the showings adjacent to the South Arm of Misema Lake. The property lies adjacent to the First Nation's Beaverhouse village on the north shore of the South Arm of Misema Lake.

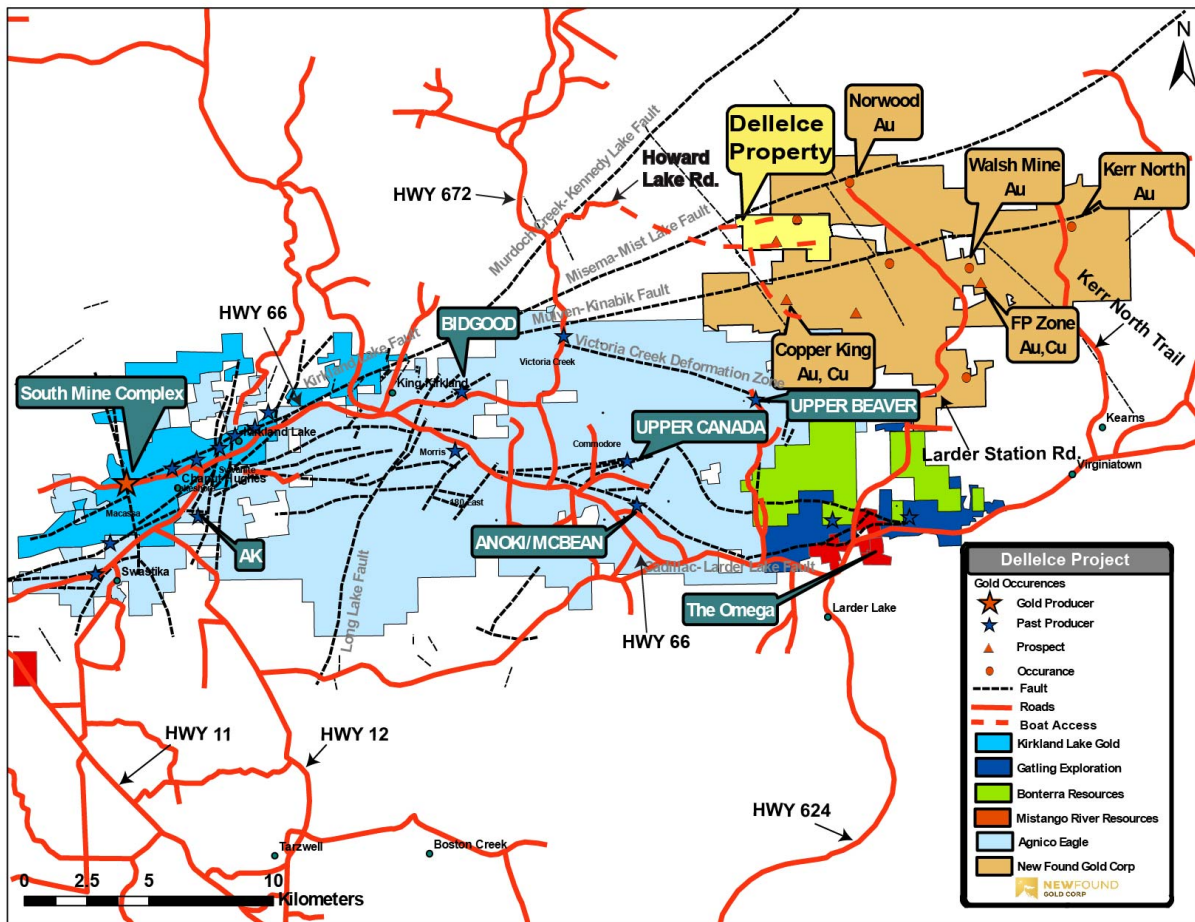


Figure 1 – Dellelce Property Location

DELLELCE PROPERTY

The Dellelce property is comprised of 37 contiguous Crown claim cells with 15 single claim cells and 22 encumbered and boundary claim cells, covering an area of approximately 624 hectares. The property is owned 100% by New Found Gold Corp. Refer to Map Supplement 1, Dellelce Property – New Found Gold Corp (Property Outline).

The property lies approximately 14 kilometres north of the Larder-Cadillac Deformation Zone, the regional east-west structural control on gold bearing alteration and mineralization, traced for over 200 kilometres from Val d'Or, Quebec to Matachewan, Ontario. The LCDZ is the control for numerous gold mines along its length, which has produced over 100 million ounces gold historically. The Kirkland Lake Gold Camp approximately 22 kilometres west of the Dellelce property accounts for over 26 million ounces of historic gold production since the early 20th century.

The rock underlying the property are of the Lower Blake River Group and are dominated by intermediate to mafic, massive volcanic flows. The volcanic flows have been intruded locally by diorite-gabbro intrusions and syenite-syenite porphyry dykes. The syenite dykes are generally less than 100 metres in thickness. In the west end of the property a gabbro intrusion that has been previously mapped as being intruded by a syenite dyke would suggest the syenite is the youngest lithological unit on the property.

Though no significant structure is mapped as crossing the property the Misema-Misty Lake Fault lies just north of the property (less than 100 metres in the western end to over a kilometre in the eastern end of the property). The Misema-Misty Lake Fault, which strikes approximately in a northeast-southwest direction, is speculated as being a continuation of the Kirkland Lake Main Break Fault system which hosts the seven historic gold mines of the Kirkland Lake Gold Camp, approximately 20 kilometres to the west.

A number of gold showings have been identified including the Norwood, Vallillee, Wood and Flood showings. These areas were the focus of the summer 2018 prospecting/reconnaissance program.

The Norwood showing is characterized by east-west striking, steeply south dipping quartz-carbonate veins hosted in feldspar-porphyry dykes and massive mafic volcanics. Numerous, overgrown trenches and pits follow the quartz veins, with the work dating back to the 1930's. Sampling from this period reported assays up to 96.53 gpt Au. Grab samples by Wallbridge Mining Company Ltd in 2008 returned assays up to 6.5 gpt Au. Diamond drilling by Wallbridge (2009, 3 drill holes) returned intersections up to 0.11 gpt Au over 0.91 metres.

The Vallillee showing is characterized by cm-sized quartz veins and stringers hosted in a syenite and mafic volcanic in old overgrown pits and trenches near the northeast corner of Misema Lake. No information can be found in the historical record regarding these old pits and trenches. In 2006 David Vallillee of Sudbury collected a sample which assayed 128 gpt Au from one of the old trenches which was followed by two short diamond drill holes which returned intersections of 13 gpt Au over 76 cms and 7 gpt Au over 91 cms.

The Wood showing located within 150 metres of the south shore of the North Arm of Misema Lake is characterized by numerous old overgrown trenches, pits and a shaft with quartz-carbonate veins and stringers hosted predominantly in a syenite porphyry. The old trenches and pits are presumed to date back to the 1930's though no information can be found in the historical record pertaining to this work. Grab samples by Wallbridge Mining Company Ltd in 2009 returned assays up to 0.38 gpt Au, subsequent diamond drilling returned no significant intersections.

The Flood showing is characterized by an old shaft on the north shore at the "narrows" on the North Arm of Misema Lake. The shaft is noted in a 1928 report (T.L. Gledhill). No information pertaining to the shaft can be found in the historical record. The showing is characterized by thin quartz veins and stringers hosted by an intermediate intrusive with coarse chalcopyrite mineralization. Four diamond drill holes were drilled on the showing in 1947 by an unknown

party which reported “traces of gold were reported from assays” (W.A. Hogg, ODM 1964). Grab sampling in 2015 reported Cu assays up to 10% with negligible Au.

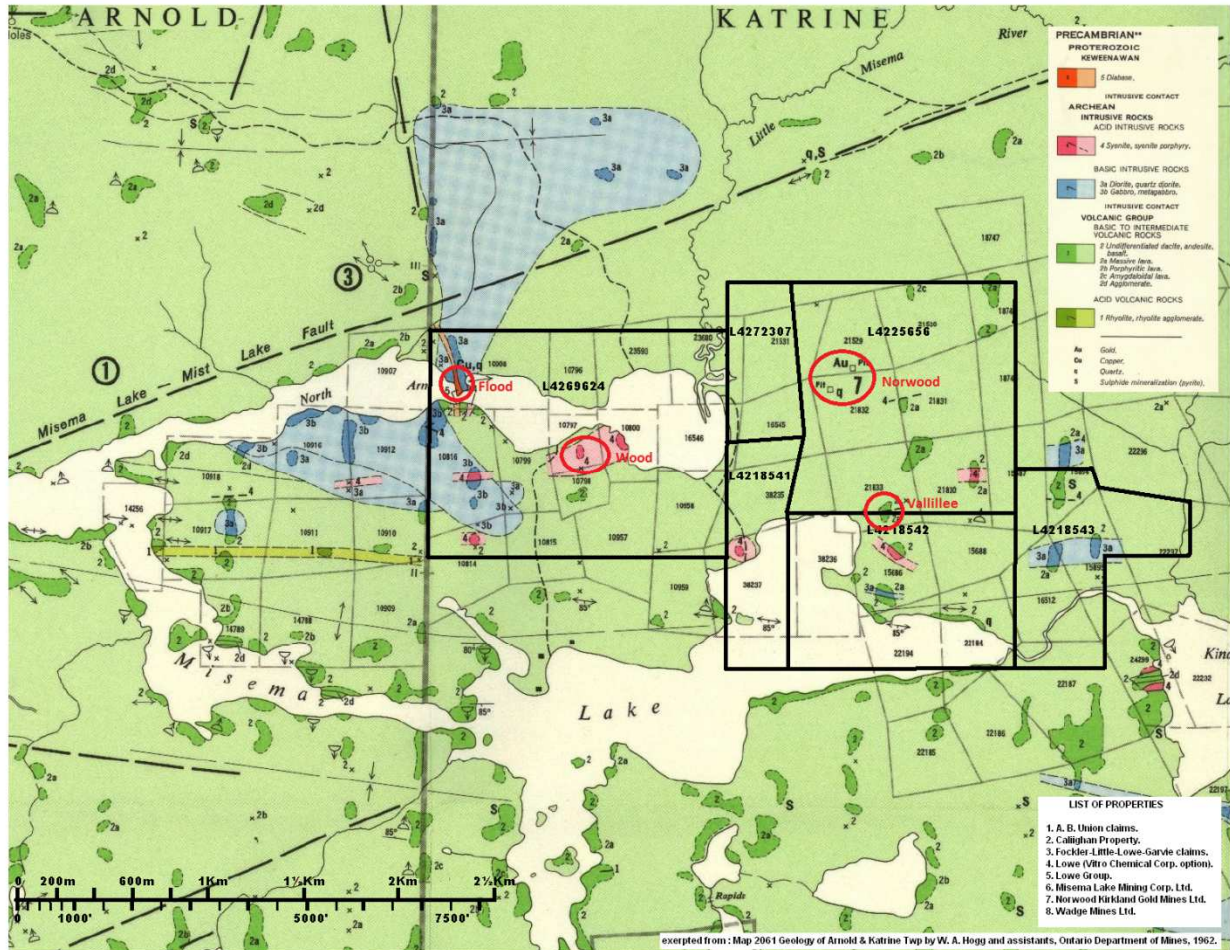


Figure 2 – Dellelce Property Geology (note claim outline is the legacy outline which closely approximates the cell claim outline)

NORWOOD AREA

A five day reconnaissance was conducted over the Norwood area from August 7th to August 17th, 2018. Primarily a two person crew of Ken Rattee, Project Geologist and Pamela Iraheta-Muniz, Field Geologist, conducted the reconnaissance with assistance by Greg Matheson, Geologist, for one day and Chris Williams, Labourer and Boatman, for three of the five days. The primary target was a series of overgrown trenches and pits which was found easily along an old trail approximately 750 metres north of the north shoreline along the South Arm of Misema Lake. The old trenches and pits followed two discrete east-west striking quartz vein systems separated by approximately 60 metres. The North Zone followed a quartz-carbonate vein and stringer system for approximately 375 metres while the South Zone followed a quartz-carbonate vein and stringer system for approximately 70 metres. Refer to Map Supplement 2, Dellelce-Vallillee

Property-Norwood Area, Summer 2018 Traverses and Map Supplement 3, Dellelce-Vallillee Property-Norwood Area, Summer 2018 Grab Samples. A total of 45 samples were collected for assay from this area.



Figure 3 – deep Norwood North Zone trench

The North Norwood Zone is characterized by a pinch and swell quartz vein and stringer system with vein widths up to 1 metre locally. Vein orientation was somewhat variable in the individual exposures with the overall trend of the 375 metre vein system striking approximately at 110° and generally dipping moderately steeply to the south with individual dip measurements varying from 45°S to 50°N . The veins were hosted in a mix of syenite porphyry and mafic volcanic with minor exposures of diorite. The syenite porphyry was typically bleached adjacent to the quartz

veins with a pinkish fine-grained K-feldspar matrix with up to 35% coarse-grained, subhedral to euhedral K-feldspar phenocrysts. The mafic volcanics adjacent to the quartz veins were typically slightly bleached, grey to light grey, fine-grained, massive and generally featureless in appearance. Locally in a few exposures where the syenite/mafic volcanic was evident the mafic volcanic exhibited a weak shear fabric adjacent to the syenite. The contact generally exhibited an east-west strike roughly concordant with the quartz vein system and the contact. Locally (between 594510E and 594560E) a coarser-grained, medium-grained, massive, equigranular, grey to light grey unit was mapped as a diorite and hosted the quartz veins in this area. The quartz vein system and the ground adjacent were typically mineralized with disseminations of generally fine-grained pyrite to 5% though locally concentrations approached 10% and coarse-grained, euhedral pyrite was noticed locally. The rock exhibited patchy moderate to high oxidation, more prevalent where pyrite concentrations were high.

The South Norwood Zone is characterized by a pinch and swell quartz vein and stringer system striking approximately 110° and generally dipping moderately steeply to the south similar to the North Zone. The zone, outlined by a series of old overgrown trenches and pits could be traced along strike for approximately 70 metres. As in the North Zone the veins were hosted in a mix of syenite porphyry and mafic volcanic similar in appearance, alteration and mineralization to the exposures in the North Zone area. No exposures of coarser-grained diorite were observed in the South Zone area. Locally the fine-grained mafic volcanic exhibited a weak to moderate shear fabric concordant with the quartz veins, probably representative of weak local structure. Vein thickness was noted up to 40 cm though generally less than 10 cm. The quartz vein system and the ground adjacent was typically mineralized with disseminations of generally fine-grained pyrite to 10% though typically at 2-5% concentrations with local moderate to coarse-grained pyrite noted. The rock exhibited patchy moderate to high oxidation, more prevalent with shear fabrics and where pyrite concentrations. Alteration appeared to be predominantly sericite, carbonate and silica.

Forty five samples were collected for assay, 25 from the North Zone and 20 from the South Zone. Ten samples from the North Zone returned assays greater than 0.1 gpt Au with a high of 1.62 gpt Au. Eight samples from the South Zone returned assays greater than 0.1 gpt Au with a high of 1.56 gpt Au. Refer to Appendix 3, Dellelce Area Assay Table.

VALLILLEE AREA

A four day reconnaissance was conducted over the Vallillee area from August 7th to August 13th, 2018, Primarily a three person crew of Ken Rattee, Project Geologist, Pamela Iraheta-Muniz, Field Geologist and Chris Williams, Labourer and Boatman, conducted the reconnaissance with assistance from Greg Matheson, Geologist, for one day. The primary target was a series of old overgrown trenches which was found easily about 100 metres east from the north shoreline of a small bay in the eastern end of the South Arm of Misema Lake. Some of the trenches were highly overgrown and considerable effort was expended to attempt to expose bedrock, at times not successfully. The trenches exposed a series of discontinuous quartz vein and stringers up to 40 cm thick though generally less than 10cm. The veins generally could not be traced beyond the trench exposure. Vein orientation appeared variable with strikes measured ranging from 50° to

140°. The few vein dips measured indicated a moderately steep northerly dip. A total of 22 samples were collected for assay, 17 from the Vallillee trenches, 3 from the Johnson trench and 2 from outlying areas. Refer to Map Supplement 4, Dellelce-Vallillee Vallillee Area, Summer 2018 Grab Samples and Traverses.

The veins were hosted by a mix of syenite porphyry and mafic volcanics. The syenite porphyry was typically pinkish in colour, slightly bleached, with K-feldspar phenocrysts to 0.5 cm in a fine-grained K-feldspar matrix. The mafic volcanics were typically fine-grained, massive, slightly bleached, grey to pale grey and generally featureless in appearance. Locally the mafic volcanics exhibited a strong quartz flooding resulting in a quartz breccia with coarse, angular mafic volcanic fragments cemented in a greyish quartz matrix. Locally the mafic volcanics were intruded by fine-grained, pinkish syenite dykes to 30 cm in thickness. No significant structure was observed in the vicinity of the Vallillee trenches. Alteration appeared to be predominantly sericite, carbonate, silica with minor epidote. Fe oxidation was minimal in this area. Mineralization evident was primarily pyrite with fine-grained disseminations locally to 7% in the wallrock adjacent to the quartz veins though typically concentrations were less than 5% and generally less concentrated in the quartz than in the adjacent wallrock. Only minor local concentrations of chalcopyrite were noted.



Figure 4 – sampling bedrock adjacent to an old Vallillee trench

Of the 17 samples collected for assay from the Vallillee trenches only two were significantly anomalous in Au (> 0.1 gpt Au) with the high being 0.474 gpt Au. Despite many samples concentrated over a small area the high grade assay reported in 2006 could not be replicated. Refer to Appendix 3, Dellelce Area Assay Table.

A trench was discovered approximately 250 metres east of the Vallillee trenches. The trench hosted quartz veins and stringers to 4 cm in width. The quartz veins and stringers were noted as being discontinuous and ‘wispy’. The veins were orientated with a 100° strike direction and dipped to the north at approximately 70°. The quartz veins were hosted in a reddened syenite

porphyry with a fine-grained groundmass containing approximately 60% K-feldspar and 20% pyroxene. Coarse-grained K-feldspar phenocrysts constituted up to 20% of the rock. The syenite porphyry hosting the showing appears as a 20 metre wide dyke striking approximately east-west as both north and south of the trenches the ground was a fresh, fine-grained, massive mafic volcanic. Narrow, hairline epidote fractures were prevalent throughout the syenite. The quartz and adjacent syenite wallrock were mineralized with up to 3% fine-grained disseminated pyrite. Chalcopyrite was evident in the quartz as coarse 'blebs' to 1 cm in size and discontinuous, irregular, hairline stringers with concentrations up to 5%. The ground only exhibited minor, patchy Fe oxidation and local Cu oxidation associated with chalcopyrite concentrations. Three samples were collected for assay with all 3 being highly anomalous in Au and Cu, with a high of 0.717 gpt Au and 0.62% Cu. Refer to Appendix 3, Dellelce Area Assay Table (Q296622, Q26657, Q296676).

FLOOD / WOOD AREA

A two day reconnaissance was conducted over the Flood/Wood area on August 7th and September 4th, 2018. The work was conducted by Ken Rattee, Project Geologist, and Pamela Iraheta-Muniz, Field Geologist with assistance on one of the days by Greg Matheson, Geologist and Chris Williams, Labourer and Boatman. The primary targets were the old trenches and shaft of the Wood showing and the old shaft of the Flood showing. The Wood trenches and shaft were found easily just over 100 metres in from the south shoreline on a hill rising from the North Arm of Misema Lake. The Flood shaft was found easily on a rocky point on the north shoreline on the North Arm of Misema Lake. Refer to Map Supplement 5, Dellelce-Vallillee Flood and Wood Areas, Summer 2018 Grab Samples and Traverses.

The Wood trenches and shaft which dates likely to the 1920's and 1930's were very overgrown making it very difficult to clean and expose bedrock. All the sampling around the trenches were restricted to trench rubble along the sides of the trenches. Trench rubble revealed abundant greyish-white to bullish looking quartz. The host rock was predominantly a bleached, pinkish, syenite porphyry. A few boulders of a fine-grained mafic volcanic and a coarser diorite were noted and were interpreted to be float not being from the trenches and shaft. A fine-grained, fresh, massive, dark grey, featureless mafic volcanic was mapped in a few outcrops 150-200 metres southwest of the shaft. Rocks in the trench rubble exhibited patchy Fe oxidation and irregular, hairline chlorite fractures were prevalent. The quartz rubble was locally massive with angular boulders up to a 25 cm in size indicating a minimum width to the veins in the trenches. Though bedrock measurements of vein orientation could not be obtained from bedrock the trenches were roughly aligned at a 45° azimuth which is presumed to be the strike direction of the quartz vein/stringer system. The syenite was typically weakly mineralized with disseminated fine to coarse-grained pyrite typically to 3% though locally to 5% in one sample. No significant structure was observed in the area. Ten samples were collected for assay from the area. Two of the 10 were anomalous in Au (>0.1 gpt Au) with a high of 0.799 gpt Au from massive quartz rubble from a trench 10 metres east of the shaft. No significant base metal assays was returned. Refer to Appendix 3, Dellelce Area Assay Table.



Figure 5 – overgrown Wood trench

The Flood shaft was discovered to be a water-filled, timbered shaft with steep walls not accessible for sampling, approximately 90 metres in from the tip of a rocky point at the “narrows” on the northern shore of the North Arm of Misema Lake. Tight, < 1 cm, quartz stringers was evident in the north and south wall of the shaft hosted in a slightly bleached, medium-grained, light grey, massive, equigranular diorite. Discontinuous, tight quartz stringers could be followed, striking roughly north-south from the shaft to the shoreline. The quartz appeared predominantly bullish and the adjacent host diorite was generally only weakly

mineralized with <1% fine pyrite evident. No significant structure was observed in the area. Along the shoreline, south of the shaft, a local blow-out of the quartz, to 8 cms width, was mineralized with 2-3% coarse chalcopyrite blebs to 5mm in size. This was the only sample collected in the area and though negligible in Au returned a 0.65% Cu assay. Refer to Appendix 3, Dellelce Area Assay Table (Q296661).

Appendix A - Dellelce Work Area Claim List

Property_Name	Claim_Number	Claim_Type	Claim_Status	Title_Type	Anniversary_Date	Work_Required	Total_Reserve	Owner (%)	Township	Mining_Division	Area (ha)	Legacy Claim
Lucky Strike	134581	Claim	Active	SCMC	04-Feb-19	400	0	NEW FOUND GOLD CORP (100)	KATRINE	LARDER LAKE	22	4225656
Lucky Strike	134582	Claim	Active	SCMC	15-May-19	400	0	NEW FOUND GOLD CORP (100)	KATRINE	LARDER LAKE	22	4218541
Lucky Strike	150027	Claim	Active	SCMC	15-May-19	400	0	NEW FOUND GOLD CORP (100)	KATRINE	LARDER LAKE	22	4218541
Lucky Strike	151378	Claim	Active	SCMC	15-Dec-19	200		NEW FOUND GOLD CORP (100)	KATRINE	LARDER LAKE	22	4269624
Lucky Strike	170149	Claim	Active	SCMC	15-Dec-19	200	0	NEW FOUND GOLD CORP (100)	KATRINE	LARDER LAKE	22	4269624
Lucky Strike	206115	Claim	Active	SCMC	04-Feb-19	400	11130	NEW FOUND GOLD CORP (100)	KATRINE	LARDER LAKE	22	4225656
Lucky Strike	206116	Claim	Active	SCMC	04-Feb-19	400	0	NEW FOUND GOLD CORP (100)	KATRINE	LARDER LAKE	22	4225656
Lucky Strike	207206	Claim	Active	SCMC	15-May-19	400	0	NEW FOUND GOLD CORP (100)	KATRINE	LARDER LAKE	22	4218542
Lucky Strike	219533	Claim	Active	BCMC	15-May-19	200		NEW FOUND GOLD CORP (100)	KATRINE	LARDER LAKE	22	4218541
Lucky Strike	235405	Claim	Active	SCMC	15-May-19	400	0	NEW FOUND GOLD CORP (100)	KATRINE	LARDER LAKE	22	4218542
Lucky Strike	273116	Claim	Active	SCMC	15-May-19	400	0	NEW FOUND GOLD CORP (100)	KATRINE	LARDER LAKE	22	4218543
Lucky Strike	284804	Claim	Active	SCMC	15-Dec-19	200	0	NEW FOUND GOLD CORP (100)	KATRINE	LARDER LAKE	22	4269624
Lucky Strike	285556	Claim	Active	SCMC	15-Dec-19	400		NEW FOUND GOLD CORP (100)	KATRINE	LARDER LAKE	22	4269624
Lucky Strike	285557	Claim	Active	SCMC	15-Dec-19	200	0	NEW FOUND GOLD CORP (100)	KATRINE	LARDER LAKE	22	4269624
Lucky Strike	301984	Claim	Active	SCMC	15-May-19	400		NEW FOUND GOLD CORP (100)	KATRINE	LARDER LAKE	22	4218542

Appendix B - Dellelce Property Claim List

Tenure ID	Township / Area	Tenure Type	Anniversary Date	Owner	Work Required	Total Reserve
122296	KATRINE	Single Cell Mining Claim	2019-05-15	New Found Gold Corp.	200	0
134581	KATRINE	Single Cell Mining Claim	2019-02-04	New Found Gold Corp.	400	0
134582	KATRINE	Single Cell Mining Claim	2019-05-15	New Found Gold Corp.	400	0
134613	KATRINE	Single Cell Mining Claim	2019-12-15	New Found Gold Corp.	200	0
141137	KATRINE	Boundary Cell Mining Claim	2019-05-15	New Found Gold Corp.	200	0
141408	KATRINE	Boundary Cell Mining Claim	2019-05-15	New Found Gold Corp.	200	0
150027	KATRINE	Single Cell Mining Claim	2019-05-15	New Found Gold Corp.	400	0
150569	KATRINE	Single Cell Mining Claim	2019-12-15	New Found Gold Corp.	200	0
151378	KATRINE	Single Cell Mining Claim	2019-12-15	New Found Gold Corp.	200	0
152783	KATRINE	Boundary Cell Mining Claim	2019-02-04	New Found Gold Corp.	200	0
170149	ARNOLD,KATRINE	Single Cell Mining Claim	2019-12-15	New Found Gold Corp.	200	0
198133	KATRINE	Boundary Cell Mining Claim	2019-05-15	New Found Gold Corp.	200	0
199512	KATRINE	Boundary Cell Mining Claim	2019-05-15	New Found Gold Corp.	200	0
200392	KATRINE	Boundary Cell Mining Claim	2019-05-15	New Found Gold Corp.	200	0
206115	KATRINE	Single Cell Mining Claim	2019-02-04	New Found Gold Corp.	400	7530
206116	KATRINE	Single Cell Mining Claim	2019-02-04	New Found Gold Corp.	400	0
207206	KATRINE	Single Cell Mining Claim	2019-05-15	New Found Gold Corp.	400	0
207207	KATRINE	Single Cell Mining Claim	2019-05-15	New Found Gold Corp.	400	0
219533	KATRINE	Boundary Cell Mining Claim	2019-05-15	New Found Gold Corp.	200	0
226310	ARNOLD,KATRINE	Single Cell Mining Claim	2019-12-15	New Found Gold Corp.	200	0
235404	KATRINE	Single Cell Mining Claim	2019-02-04	New Found Gold Corp.	400	0
235405	KATRINE	Single Cell Mining Claim	2019-05-15	New Found Gold Corp.	400	0
236350	KATRINE	Boundary Cell Mining Claim	2019-05-15	New Found Gold Corp.	200	0
266007	KATRINE	Single Cell Mining Claim	2019-12-15	New Found Gold Corp.	400	0
266008	KATRINE	Single Cell Mining Claim	2019-12-15	New Found Gold Corp.	400	0
273116	KATRINE	Single Cell Mining Claim	2019-05-15	New Found Gold Corp.	400	0
273432	KATRINE	Single Cell Mining Claim	2019-12-15	New Found Gold Corp.	400	0
273433	ARNOLD,KATRINE	Single Cell Mining Claim	2019-12-15	New Found Gold Corp.	200	0
284765	KATRINE	Boundary Cell Mining Claim	2019-02-04	New Found Gold Corp.	200	0
284804	KATRINE	Single Cell Mining Claim	2019-12-15	New Found Gold Corp.	200	0
285556	KATRINE	Single Cell Mining Claim	2019-12-15	New Found Gold Corp.	400	0
285557	KATRINE	Single Cell Mining Claim	2019-12-15	New Found Gold Corp.	200	0
285560	KATRINE	Boundary Cell Mining Claim	2019-12-15	New Found Gold Corp.	200	0
301984	KATRINE	Single Cell Mining Claim	2019-05-15	New Found Gold Corp.	400	0
320854	KATRINE	Boundary Cell Mining Claim	2019-05-15	New Found Gold Corp.	200	0
322153	KATRINE	Boundary Cell Mining Claim	2019-12-15	New Found Gold Corp.	200	0
333508	KATRINE	Boundary Cell Mining Claim	2019-02-04	New Found Gold Corp.	200	0

Appendix C - Dellelce Area Assay Table

Sample #	Area	Date Collected	UTM East	UTM North	Au (g/t)	Cu (ppm)	Pb (ppm)	Zn (ppm)	Sample Description
Q296618	Vallillee	07/08/18	5944529	5341501	0.009	150	11	27	qtz bx, 45% subangular MV frags generally <1cm in a greyish qtz matrix, 1-2% fg disseminated predominantly with the mafic frags, from side of the hill trench
Q296656	Vallillee	07/08/18	594554	5341529	0.001	39	3	41	~1 cm thick, 2-3 m long QS in sy. QS is white to grey, no oxidation or visible mineralization. Orientation 70/45N
Q296657	Vallillee	07/08/18	594833	5341581	0.474	4370	194	49	blasted rx from Johnson Pit. Massive light grey QS brecciating fragments of syenite and secondary epidote stringers. Disseminated euhedral py (2-3%) and cpy blebs (5%) up to 0.5cm. Minor oxidation.
Q296658	Norwood	07/08/18	594565	5342288	0.294	33	11	38	collected next to norwood shaft 1, pile of blasted rubble. QV and QS up to 5 cm thick brecciating metavolcanics. Qtz is massive and white, no oxidation. Host rx is grey-green and altered to epidote; cg granular. Euhedral py cubes up to 3 mm disseminated in host rx (15%); not observed in qv or qs.
Q296660	Flood/Wood	07/08/18	593258	5341843	0.033	10	3	16	grab sample from where we parked boats in wood showing. ~8 cm QV, massive, unoxidized and unmineralized, in altered sy. 1 spec of possible Au <1mm, trace py. Minor mineralization
Q296661	Flood/Wood	07/08/18	592380	5342119	0.003	6520	4	13	bleached, pale grey, fg, equigranular, intermediate intrusive with a qv to 8cm, 2-3% fg-mg disseminated, no py evident
Q296619	Vallillee	08/08/18	594600	5341546	0.002	15	3	29	pink, massive, syen porph, with minor mafic xeno's with 20% mg-cg K-spar phenos, with a 1cm qs, strike 90, dip 30N, qtz looks bullish
Q296620	Vallillee	08/08/18	594583	5341570	0.025	62	2	32	highly, irregular, qtz stockwork with qv's to 8cm. looks bullish, no py evident, hosted by a highly irregular pink, syen dyke up to 30cm thick, syen dyke hosted in slightly bleached MV
Q296662	Vallillee	08/08/18	594537	5341503	0.001	25	3	42	Dellelce Trench 1. 0-2m sample. QBX- 50% greyish qtz, matrix with 35% angular fresh dark grey MV frags up to 2 cm + 15% angular, altered, reddened sy frags. Up to 5% fg py up to 1 mm
Q296663	Vallillee	08/08/18	594529	5341505	0.253	43	3	23	Dellelce Trench 1. 2-4m sample. QBX- 50% greyish qtz, matrix with 35% angular fresh dark grey MV frags up to 2 cm + 15% angular, altered, reddened sy frags. Up to 5% fg py up to 1 mm
Q296664	Vallillee	08/08/18	594537	5341502	0.001	7	6	18	Dellelce Trench 1. 4-6m sample. 2 irregular QV up to 40 cm thick separating fragments of MV and QBX. QV is massive grey-white, minimal py mineralization. MV and QBX also sampled.
Q296665	Vallillee	08/08/18	594532	5341505	0.027	81	57	24	Dellelce Trench 1. 6-8m sample. Conglomerate dike ~15 cm thick surrounded by 2 qtz veins-possible dialation infilled by qtz pebbles (rounded) up to 2cm thick surrounded by fg light blue-grey MV. Qtz veins massive, light grey, unoxidized and minimal py mineralization. QBX below qtz vein. section also displays gradational irregular contact between QBX and syenite porphyry (pink syenite with kspars phenos up to 0.5 cm in a fg grey matrix. in some areas brecciated by 0.5-1 cm irregular QS).
Q296666	Vallillee	08/08/18	594537	5341484	0.004	48	10	27	Dellelce Trench 1. 8-10m sample. Area is a 0.5 cm indent due to blasting on rx face. Sy with QS- pink syenite with kspars phenos up to 0.5 cm in a fg grey matrix. in some areas brecciated by 0.5-1 cm irregular QS
Q296668	Vallillee	08/08/18	594552	5341526	0.028	404	5	70	Dellelce Trench 2. Trench 2 follows strike from drill holes at 230 strike, ~10 m from drill holes. Sample taken from north end of trench. Dark grey, slightly altered (reddened), massive, fg-mg, pinkish in some areas due to hematization MV. 2-3% py up to 1 mm. cut by irregular veinlets of sy up to 1 cm
Q296669	Vallillee	08/08/18	594550	5341530	0.002	67	2	60	Dellelce Trench 2. sample grabbed halfway through trench. Subrounded boulder found on side of trench, surrounded by abundant soil. Unclear if these are blasted from trench or bedrx. Bleached, grey to pale green, fg mv, massive, cut by irregular epidote stringers, irregular hairline sy and minor hairline qtz stringers. 2-3% finely disseminated py locally highly concentrated, some coarse py locally concentrated.
Q296670	Vallillee	08/08/18	594572	5341562	0.001	232	4	50	Dellelce Trench 3. dark grey, fg, massive mv. 5-7% py dissemination in highly irregular stringers up to 1 cm. minor cpy.
Q296671	Vallillee	08/08/18	594538	5341519	0.001	58	4	45	1-3 cm QS in fairly fresh mv, not altered or mineralized. ~2.5m visible, striking 90. fragments of reddish sy 2-3cm caught up in qs.
Q296672	Vallillee	08/08/18	594558	5341506	0.001	45	1	24	5-6cm qv lens striking E-W 100. massive, unmineralized and unoxidized. Fragments up to 2 cm of sy caught up in qv. Surrounded by mv; minor mineralization of 1-2% euhedral py in mv.
Q296673	Vallillee	08/08/18	594561	5341467	0.001	19	3	32	qv in fg mv. Vein up to 2 cm thick. 140 strike, unmineralized and unoxidized, massive. Mv locally oxidized (minor) but unmineralized
Q296674	Vallillee	08/08/18	594585	5341527	0.001	52	4	13	qv in sy porphyry. ~2-3 cm thick, running down and overtop a cliff outcrop. 6-8 cm exposed. Qv brecciating sy and mc (fragments of sy and mv up to 2 cm). No oxidation or mineralization
Q296675	Vallillee	08/08/18	595017	5340963	0.001	30	3	64	massive qv along shoreline. Took boat to come see it. Trending 105/70N, up to 30 cm thick. Vein forms stockwork in some areas spanning up to 1. not too oxidized, no mineralization. Hosted by lightly bleached MV with minor trace py.
Q296621	Vallillee	09/08/18	594657	5341546	0.003	77	3	59	alt, reddened, syen porph, with anirregular, flat, 4cm qv, qv appears white & Bullish, 3-5% fg py in highly altered, reddened, syen porph, adj to qv, locally conc

Appendix C - Dellelce Area Assay Table

Sample #	Area	Date Collected	UTM East	UTM North	Au (g/t)	Cu (ppm)	Pb (ppm)	Zn (ppm)	Sample Description
Q296622	Vallillee	09/08/18	594826	5341587	0.717	4580	85	18	reddened, syen porph with discontinuous, wispy, greyish qs's to 4cm, strike 100, dip 70N, 2-3% fg py & cpy (?) locally conc to 7-9% with qs's
Q296623	Vallillee	09/08/18	594996	5341731	0.001	70	1	53	slightly bleached, fg, massive MV with 2-3% fg py conc as hairline py strgr's & local clots
Q296676	Vallillee	09/08/18	594824	5341588	0.665	6180	249	28	Johnson pit. Blasted material. Mostly massive qtz with fragments up to 4 cm of mg red sy and secondary epidote stringers up to 2mm. Blebs of cpy in qtz and sy, or oxidized py up to 3 mm, which appears to occur along fractures only.
Q296624	Norwood	13/08/18	594490	5342318	0.132	97	8	98	Norwood P4, 3-5% fg-mg disse py in a mafic-looking, mottled, dark grey/light grey FP, 45% euhedral to subhedral K-spar phenos, from pit rubble
Q296625	Norwood	13/08/18	594475	5342322	0.005	6	4	14	pit rubble, 8m from E end of trench, 50% white, massive, bullsh Qtz, doesn't appear mineralized, Qv at least 30cm thick, 50% mafic-rich FP with minor qs's to 1cm, 1-2% fg disse cg-mg py locally conc
Q296626	Norwood	13/08/18	594467	5342317	0.14	12	4	12	pit rubble, 8m from W end of trech, 75% greyish-white, massive qtz in pit rubble, Vn > 25cm thick, minor chl fract's with qtz, 1-2% fg py, 25% mafic-rich FP with minor qs's to 1cm, 1-2% fg disse py
Q296627	Norwood	13/08/18	594457	5342318	0.001	16	4	37	trench rubble between T6 & T20, 2-3% fg-cg disse py in mafic-rich FP, minor, irregular, hairline to 4cm qs's, sample is 25% qtz & 75% FP with py, qtz looks bullsh
Q296629	Norwood	13/08/18	594515	5342295	0.071	11	8	23	Norwood Shaft 1, irregular, 7->30cm, white, massive QV, dosen't look mineralized, hosted by a mix of pinkish, FP with coarse, feld phenos and slightly bleached, mg, MV with 1-2% disse py & minor irregular qs's
Q296630	Norwood	13/08/18	594527	5342265	0.002	6	3	6	east end of Norwood T4, massive, white, bullsh-looking Qtz, minor, irregular, hairline chl fract's, minor tr fine py with fract's
Q296631	Norwood	13/08/18	594550	5342278	0.264	13	9	33	Norwood T3, trench rubble, mix of white, bullsh-looking, massive qtz with 5% iregular chl fract's & bleached, pale, greenish-grey, altered FP, 10% irregular qs's, tr-1% fg disse py locally conc adj to qs's
Q296632	Norwood	13/08/18	594560	5342299	0.002	166	3	79	N side of Norwood T2, trench rubble, mix of fg, bleached, pale greyish-green MV with tr fg py locally conc in hairline, irregular, carb fract's & reddened FP with 1-2% fg py locally conc adj to irregular, hairline qs's and qtz filled dilations
Q296678	Norwood	13/08/18	594500	5342127	0.001	264	5	27	Norwood P3, 8cm greyish QV in pink, fresh-looking syen porph, strike 030, dip 70N, minor epidote on QV-syen contact, bullsh, doesn't look mineralized, nil py
Q296679	Norwood	13/08/18	594498	5342308	0.079	36	3	52	Norwood P3. Taken from rubble on side of pit. 1/2 of bag: Pink Sy por with up to 50% euhedral kspar phenos up to 1 cm in length in a mg redish pink matrix. Sprinkling of euhedral py up to 0.3cm (5%). 1/2 of bag: shear zone fragments of light blue-grey mv with hairline veinlets of fg-mg purple-pink euhedral mineral? fg py locally concentrated in blebs up to 1 cm (3%)
Q296680	Norwood	13/08/18	594481	5342312	0.011	21	8	27	N side of Norwood T5. 1/2 of bag: QV up to 0.5 m thick (exposure of 1 m in length) striking 308/50N, massive, white, no visible mineralization. Fractures infilled by black fg chlorite. Some fractures oxidized. 1/2 of bag: mafic porph, blue-green with up to 0.8cm euhedral-subhedral light green-white fspar (35%) in a mg matrix, cut by irregular veinlets of massive white qtz up to 0.5cm in width striking E-W. not mineralized or oxidized. matrix has 2-3% euhedral py disse.
Q296681	Norwood	13/08/18	594484	5342314	1.62	37	14	35	Bedrx on W side of Norwood T5. mafic fspar porph (same as Q296680). Massive QV up to 1 m and 0.5m exposure, massive, white, chloritic fractures. Sharp contact with Sy on one side and contact with fg blue-grey schist shear zone on other side. Contact with Sy and schist oxidized with py blebs up to 2 cm (7% py).
Q296682	Norwood	13/08/18	594413	5342331	0.006	100	2	76	Norwood T7. 3/4 of bag: cg porph (35%) reddened sy with trace sulphides and grey unmineralized qtz stringers up to 3mm fracturing rx. 1/4 bag: bleached greenish grey fg mv with 2-3% finely dissm sulphides locally conc.
Q296683	Norwood	13/08/18	594516	5342278	0.804	25	8	49	Norwood T6 or T4?. 3/4 of bag: shear zone of fg schist occuring at contact with 2cm thick qtz vein (sharp contact). Contact oxidize with sprinkling of up to 2% fg euhedral py. Mv has powdery red oxidized patches covered with fg sulphides. 1/4 of bag: massive white qtz with chloritic fractures.
Q296684	Norwood	13/08/18	594527	5342291	0.05	38	13	63	Norwood T6 or T4? 2/4 of bag: Mg mv silicified by qtz blebs. Light blue greenish grey. Sulphides concentrated around silicified ares (5-10% py), limited localized oxidation. Mv in contact with qtz vein running through trench. 1/4 of bag: massive white qtz with chloritized fractures and local oxidation. fg disse py at contact with mv. 1/4 of bag mv with hairlined epidote stringers and brecciated by qtz veinlets. localized oxidized patches but no mineralization.
Q296685	Norwood	13/08/18	594552	55342290	1.385	9	12	34	Norwood S1. W side. Mg-cg light blue grey mv with epidote and up to 4-% silicification of cg rounded qtz throughtout rx. Up to 3% disse sulphides in matriz. Qtz veins up to 3 cm cut rx in some areas, massive, no oxid. Up to 3% euhedral fg py at contact btw qv and mv.

Appendix C - Dellelce Area Assay Table

Sample #	Area	Date Collected	UTM East	UTM North	Au (g/t)	Cu (ppm)	Pb (ppm)	Zn (ppm)	Sample Description
Q296686	Norwood	13/08/18	594575	5342286	0.005	38	2	41	Norwood T1. same silicified mg-cg mv as Q296685. 5% v fg py disseminated throughout, not concentrated around qtz. No qv or qs.
Q296687	Norwood	15/08/18	594679	5342300	0.042	7	4	42	"High grade area" next to Norwood T10. 2/4 of bag: sy porph w 35% 0.3-0.5 euhedral light pink ksp phenos in a mg blue green matrix. Surface of rx bleached light pink colour. ~5% euhedral py (fresh and oxidized) up to 3 mm disseminated throughout matrix. all fragments contain contact with qv (sharp)-brecciated by qv, lightly to med oxidized at contact. 1/4 of bag: just qtz from qv, massive, cg, crystalline, fractured (not infilled by anything), 353 trend unknown dip. 1/4 of bag: just porph sy with no brecciating qv.
Q296689	Norwood	15/08/18	594682	5342291	0.001	25	1	40	mv outcrop overtop of Q296687 sy porph dike. Fg light blue green mv, locally oxidized. Fg sulphides concentrated in oxidized ares (5-6%). Bleds or red hematization distributed throughout, conc in fractures. Hairline unmineralized qtz stringers present
Q296690	Norwood	15/08/18	594675	5342274	0.277	60	6	87	Norwood T10. sy porph dike in fg mv. 3/4 of bag is dark blue green fg mv brecciated by crystalline qv, qv stained yellow and locally oxidized. Euhedral py disseminated in matrix (5%), 1/4 of bag is sy porph dike with unoxidized qs brecciating sample.
Q296691	Norwood	15/08/18	594685	5342279	0.168	23	10	37	Norwood T10. 1/2 of bag: blue green mg crystalline mv, ~30% silicified with qs bw 0.2-1 cm brecciating sample. Up to 7% fg py disseminated. Green mineral fuschite or epidote? 1/2 of bag: blue green fg mv with localized patches of red hematization, surface oxidized, fg py (subhedral) concentrated in fractures of blebs up to 1 cm.
Q296692	Norwood	15/08/18	594690	5342289	0.072	95	3	68	Norwood P13. 3/4 of bag blasted rx from NE side of pit, fg-mg mv, light blue green fresh, surface slightly oxidized. Slightly metamorphosed (fuschite). Hairline black chlorite stringers, fg-mg py concentrated along chlorite and silicified areas (10% silicified). 1/4 of bag is from bedrx in SE side of pit. hematized fg mv with trace min and oxidized surface.
Q296693	Norwood	15/08/18	594700	5342290	0.001	68	1	114	Norwood T11. bdrx on N side of trench. 97% of bedrx is fgmv but 1 block is mafic sy porph, uncertain if there is a contact bw the two here. Sample is fg mv with 5% fg py disseminated, locally oxidized and hematized.
Q296694	Norwood	15/08/18	594790	5342297	0.002	42	4	68	Norwood T14. in this trench there is 3 rx types but no contact observed bw the three. Sample bag is 1/3 of each. South end of trench is mg reddened sy with xenos of black fg mv, subrounded up to 2 cm, trace mineralization. North end of trench is hematized blue green fg mv with trace mineralization. south east end is cg sy porph with blue green matrix, no qv or oxidation, trace mineralization.
Q296695	Norwood	15/08/18	594477	5342246	0.047	61	6	83	Norwood P5. samples pit bedrx and rubble around it. 1/4 of bag: fg mv with hairline qs and locally concentrated fg py. 1/4 of bag: sy porph dike? Pink, cg, qs up to 1 cm thick as stockwork. Mg py disseminated throughout. 2/4 of bag: rubble of schist-like mv with up to 10% fg py disseminated, silicified up to 30% (mg).
Q296696	Norwood	15/08/18	594474	5342246	0.028	8	5	37	Norwood P6. reddened (altered) sy porph dike. Light pink bleached surface. Qs up to 0.7cm brecciating surface. Trace mineralization.
Q296697	Norwood	15/08/18	594472	5342250	0.255	50	16	89	rubble around Norwood P6. fg-mg silicified (20%) schist (mv), dark green, brecciated by massive qs up to 1 cm, euhedral py fg-mg up to 3 mm disseminated throughout qs and matrix (5%)
Q296698	Norwood	15/08/18	594469	5342247	0.765	7	5	33	Norwood P7. rubble. Sy porph brecciated by white massive qs up to 1 cm, euhedral disseminated mg py up to 3 mm (15%) throughout rx, tends to concentrate along qz rich areas.
Q296699	Norwood	15/08/18	594445	5342252	0.313	32	6	40	off of Norwood P8. massive qv (white, no oxidation, crystalline) striking 280. series of qs up to 1 cm following strike. Hosted by fg-mg blue green mv.
Q296700	Norwood	15/08/18	594464	5342249	1.56	13	10	30	Norwood P8. 2/3 sy porph with up to 10% py, thin veinlets of metamorphosed mv (dark green), py concentrated along these veins. 1/3 massive qv with limited fracturing, unmineralized
Q296633	Norwood	16/08/18	594435	5342247	0.198	21	11	16	3-7cm QV, strike 110, dip 65S, white, massive qtz with only very minor chl fract's, hosted by a bleached, grey, slightly altered FP with cg feld phenos, 1-2% fg disseminated py with FP, QV looks bullish
Q296634	Norwood	16/08/18	594422	5342254	0.093	21	17	11	Norwood T9 W end, 15cm massive, white qtz with minor, hairline chl fract's with minor fg py locally conc in fract's, hosted by bleached, pinkish-brown FP with 35% cg feld phenos, 2-3% fg disseminated py with FP
Q296635	Norwood	16/08/18	594415	5342255	0.269	19	7	24	mix of altered, bleached, pale pinkish-brown, FP with 35% cg feld phenos and 2-3% fg disseminated py, hosting a 2-5cm white qs, strike 095, dip 80S, qtz looks bullish
Q296636	Norwood	16/08/18	594430	5342182	0.059	12	3	34	either Norwood T17 or T18, trench rubble, 3-5cm qs's hosted by fract'd, slightly altered FP with minor hairline chl fract's, 1-2% fg disseminated py locally conc with FP
Q296637	Norwood	16/08/18	594431	5342166	0.009	7	6	29	Norwood trench just south of T17 or T18, trench rubble, irregular qs's to 1cm, greyish-white qtz in slightly altered FP with minor chl fract's, 1-2% fg disseminated py with FP
Q296638	Norwood	16/08/18	594447	5342232	0.181	2	2	2	Norwood T19, trench rubble,, massive qtz frag 40cm in size, white, massive qtz with minor, irregular chl fract's, minor tr fine py with fract's, looks bullish

Appendix C - Dellelce Area Assay Table

Sample #	Area	Date Collected	UTM East	UTM North	Au (g/t)	Cu (ppm)	Pb (ppm)	Zn (ppm)	Sample Description
Q294952	Norwood	16/08/18	594680	5342286	0.111	6	2	30	Norwood T10 S end, massive, whitish Qtz with abundant, irregular, hairline chl fract's, tr-1% fg py with chl fract's, trench rubble, QV >= 30cm in width,
Q294953	Norwood	16/08/18	594444	5342257	0.085	26	8	45	Norwood P9. qs 3-4 cm in highly bleached pale greenish brown fspar porph. 1-2% pf py in porph, not observed in qs. Stringer trending 105 (E-W). Local oxidation from py
Q294954	Norwood	16/08/18	594433	5342253	0.169	54	16	74	Norwood T9. 1/3 of bag: qv trending 268 in sharp contact with mv schist (shear zone) and sy porph. Qv ~5cm thick, fractured infilled with sy frags up to 3 cm long and black chlorite. Qv is white, barren and unoxidized. 2/3 of bag: light blue green fg mv (shear zone, locally highly oxidized with 5% py + other sulphides concentrated in oxidized areas.
Q294955	Norwood	16/08/18	594433	5342257	0.029	15	4	46	Norwood T8. cg sy porph, euhedral-subhedral fspar up to 5 mm. 2-3% mg py (1-2mm) py sprinkling throughout. Local oxidation in fractures, sulphides concentrate here. Qs up to 5mm brecciating sample, surrounded by fg py in some areas
Q294956	Norwood	16/08/18	594409	5342247	0.006	96	9	74	rubble around Norwood P8. 1/3 of bag: mg mv ~30% silicified, blue green, brecciating qs, ~5% fg euhedral py concentrated in qtz rich areas. 1/3 of bag: pink sy porph with brecciating qv, bleached light pink, trace sulfides. 1/3 of bag oxidized fault gauge in fault seam (crumbly). fault gauge striking E-W, 85/70S
Q294957	Norwood	16/08/18	594408	5342266	0.014	10	9	28	series of 1-4cm qs's in slightly altered, mottled pink/gtrey FP, 2-3% fg dissemin py, qs's white, somewhat irregular, looks bullish, strike 095, dip 85N
Q294958	Norwood	16/08/18	594958	5342195	0.001	29	3	25	Norwood T17. reddened sy porph, fractures infilled by chlorite stringers and qz hairline fractures. Fg dissemin py dissemin up to 2-3%.
Q294959	Norwood	16/08/18	594449	5342212	0.001	4	1	3	Norwood T16. qv in mv. Qv ~10cm thick, mostly white and massive but fractures infilled by chlorite (black) and pink sy. Mineralization along fractures up to 3% of fg euhedral py.
Q296647	Flood/Wood	04/09/18	593035	5341789	0.025	48	3	21	Trench 819, pink syen, angular boulder 8m from S End of trench, coarser-grained K-spar phenos in a fg pink, syen matrix, slightly altered, reddened with a 1cm greyish-white qs, tr fg py locally conc with syen porph
Q296648	Flood/Wood	04/09/18	593057	5341799	0.001	42	4	23	Trench 818b, trench rubble, pinkish syen porph with minor 0.5-1.5cm greyish-white qs's, 1-2% fg dissemin py with syen locally, conc with chl dilations, locally highly oxid
Q296649	Flood/Wood	04/09/18	593076	5341814	0.008	28	6	39	Shaft Area, from shaft rubble, massive, greyish-white Qtz with minor caught-up, highly bleached, syen frags & abundant highly, irregular chl fract's dilated locally to 1cm, QV>=20cm in width, appears as a qtz Bx locally, 1-2% fg dissemin py with syen & chl fract's locally conc, tr fg py with qtz
Q297351	Flood/Wood	04/09/18	593089	5341812	0.799	4	5	30	massive, greyish-white Qtz in a greyish, altered syen porph, trench rubble, Qv's in rubble >=25cm in width, abundant, irregular chl fract's with qtz, 3-5% fg-mg dissemin py with syen, tr with qtz
Q297352	Flood/Wood	04/09/18	593041	5341731	0.009	6	9	38	Trench 238, light pink, bleached, syen porph, fract'd with irregular, hairline chl fract's & minor irregular qs's to 1cm, 3-5% fg-mg anhedral to euhedral py with syen
Q294969	Flood/Wood	04/09/18	593077	5341815	0.061	13	5	70	rubble close to shaft. Massive white qv, fractures infilled by black chlorite. Altered, lightly sheared light green mv (epidote) and reddened st fragments also infill fractures of qv. Massive py, cg up to 0.4 mm dissemin. Throughout, concentrated along mv boundary. Ken sampled 2 metres in
Q294971	Flood/Wood	04/09/18	593079	5341797	0.015	8	1	18	rubble next to shaft. Massive qtz brecciated by bleached pink sy (light salmon colour), or possible the qtz itself contains a pink tint...hard to tell. Qtz fractures infilled by black chlorite. Up to 3% euhedral py up to 3mm concentrated in chloritic fractures. Local red oxidation (fe) along fractures
Q294972	Flood/Wood	04/09/18	593053	5341726	0.001	8	5	47	off of tr 245. bderx. Cg reddened st, oxidized btw cg fspar grains (rounded). Brecciated by qs up to 1 cm, massive, white. Up to 2% euhedral py dissemin. Some oxidized areas covered by layer of v.fg sulphides (sprinkling/dusting)
Q294973	Flood/Wood	04/09/18	592951	5341819	0.395	10	6	42	tr 232. pinkish-grey sy porph q 1cm qs. Minor irregular hairline chl fractures. 1-2% fg-mg dissemin py with sy.

APPENDIX D - DELLELCE 2018 RECONNAISSANCE WORK LOG

August 7 – Norwood, Flood/Wood, Vallillee Areas - Ken Rattee, Greg Matheson, Pamela Iraheta-Muniz, Chris Williams
August 8 – Vallillee Area - Ken Rattee, Pamela Iraheta-Muniz, Chris Williams
August 9 – Vallillee Area - Ken Rattee, Pamela Iraheta-Muniz
August 13 – Vallillee, Norwood Areas - Ken Rattee, Pamela Iraheta-Muniz, Chris Williams
August 15 – Norwood Area - Pamela Iraheta-Muniz, Chris Williams
August 16 – Norwood Area - Ken Rattee, Pamela Iraheta-Muniz
August 17 – Norwood Area - Ken Rattee, Pamela Iraheta-Muniz
September 4 – Flood/Wood Area - Ken Rattee, Pamela Iraheta-Muniz

Ken Rattee – Project Geologist
Pamela Iraheta-Muniz – Field Geologist
Greg Matheson – Senior Geologist
Chris Williams – Labourer & Boatman

APPENDIX E
CERTIFICATES OF ANALYSIS



ALS Canada Ltd.
 2103 Dollarton Hwy
 North Vancouver BC V7H 0A7
 Phone: +1 (604) 984 0221 Fax: +1 (604) 984 0218
 www.alsglobal.com/geochemistry

To: **NEW FOUND GOLD CORP.**
69 YONGE STREET
SUITE 1010
TORONTO ON M5E 1K3

Page: 1
 Total # Pages: 3 (A - C)
 Plus Appendix Pages
 Finalized Date: 7 - SEP - 2018
 Account: PRCDVOXH

CERTIFICATE TM18203749

Project: LUCKY STRIKE

This report is for 77 Rock samples submitted to our lab in Timmins, ON, Canada on 20 - AUG -2018.

The following have access to data associated with this certificate:

PETER DIMMELL KEN RATTEE	GREG MATHESON MICHAEL REGULAR	PETER MCINTYRE
-----------------------------	----------------------------------	----------------

SAMPLE PREPARATION	
ALS CODE	DESCRIPTION
WEI - 21	Received Sample Weight
LOG - 21	Sample logging - ClientBarCode
CRU - QC	Crushing QC Test
PUL - QC	Pulverizing QC Test
CRU - 36	Fine Crushing - 85% <2mm
SPL - 21	Split sample - riffle splitter
PUL - 32	Pulverize 1000g to 85% < 75 um
LOG - 23	Pulp Login - Rcvd with Barcode

ANALYTICAL PROCEDURES		
ALS CODE	DESCRIPTION	INSTRUMENT
ME - ICP41	35 Element Aqua Regia ICP -AES	ICP - AES
Au - ICP21	Au 30g FA ICP -AES Finish	ICP - AES

This is the Final Report and supersedes any preliminary report with this certificate number. Results apply to samples as submitted. All pages of this report have been checked and approved for release.

***** See Appendix Page for comments regarding this certificate *****

Signature: 
 Colin Ramshaw, Vancouver Laboratory Manager



ALS Canada Ltd.
 2103 Dollarton Hwy
 North Vancouver BC V7H 0A7
 Phone: +1 (604) 984 0221 Fax: +1 (604) 984 0218
 www.alsglobal.com/geochemistry

To: NEW FOUND GOLD CORP.
 69 YONGE STREET
 SUITE 1010
 TORONTO ON M5E 1K3

Page: 2 - A
 Total # Pages: 3 (A - C)
 Plus Appendix Pages
 Finalized Date: 7 - SEP - 2018
 Account: PRCDVOXH

Project: LUCKY STRIKE

CERTIFICATE OF ANALYSIS TM18203749

Sample Description	Method	WEI - 21	Au - ICP21	ME - ICP41	ME - ICP41	ME - ICP41	ME - ICP41	ME - ICP41	ME - ICP41	ME - ICP41	ME - ICP41	ME - ICP41	ME - ICP41	ME - ICP41	ME - ICP41	ME - ICP41
	Analyte	Recvd Wt.	Au	Ag	Al	As	B	Ba	Be	Bi	Ca	Cd	Co	Cr	Cu	Fe
Units		kg	ppm	ppm	%	ppm	ppm	ppm	ppm	ppm	%	ppm	ppm	ppm	ppm	%
LOD		0.02	0.001	0.2	0.01	2	10	10	0.5	2	0.01	0.5	1	1	1	0.01
██████████		████	████	████	████	████	████	████	████	████	████	████	████	████	████	████
Q296618		1.87	0.009	0.2	0.82	<2	<10	60	0.6	<2	1.60	<0.5	7	26	150	1.96
Q296619		0.54	0.002	<0.2	0.63	<2	<10	120	<0.5	<2	0.71	<0.5	7	47	15	2.42
Q296620		1.26	0.025	<0.2	0.96	<2	<10	140	<0.5	<2	1.00	<0.5	9	16	62	1.90
Q296621		1.91	0.003	0.3	1.67	<2	<10	120	<0.5	<2	0.70	<0.5	13	67	77	3.85
Q296622		1.01	0.717	13.3	0.55	<2	<10	230	<0.5	118	3.50	<0.5	4	31	4580	1.87
Q296623		0.93	<0.001	<0.2	1.81	<2	<10	30	<0.5	<2	0.98	<0.5	38	135	70	3.32
Q296624		1.51	0.132	0.3	2.48	9	<10	70	0.9	<2	4.91	<0.5	24	15	97	5.17
Q296625		0.78	0.005	<0.2	0.40	<2	<10	40	<0.5	<2	0.23	<0.5	2	20	6	1.38
Q296626		1.34	0.140	<0.2	0.35	<2	<10	40	<0.5	<2	0.44	<0.5	2	24	12	1.12
Q296627		0.89	0.001	0.2	0.88	8	<10	60	<0.5	<2	1.60	<0.5	8	15	16	2.46
██████████		████	████	████	████	████	████	████	████	████	████	████	████	████	████	████
Q296629		1.94	0.071	<0.2	0.44	9	<10	40	<0.5	<2	0.81	<0.5	4	24	11	1.55
Q296630		2.04	0.002	<0.2	0.17	<2	<10	480	<0.5	<2	0.80	<0.5	1	21	6	0.78
Q296631		1.36	0.264	0.2	0.75	<2	<10	160	<0.5	<2	2.75	<0.5	6	8	13	2.06
Q296632		1.62	0.002	0.2	2.44	<2	<10	160	<0.5	<2	2.36	<0.5	43	105	166	4.44
Q296633		0.99	0.198	0.3	0.33	<2	<10	440	<0.5	<2	2.02	<0.5	6	16	21	1.23
Q296634		1.71	0.093	0.4	0.17	<2	<10	780	<0.5	<2	0.83	<0.5	3	18	21	0.77
Q296635		1.02	0.269	0.2	0.49	<2	<10	90	<0.5	<2	1.28	<0.5	5	15	19	1.44
Q296636		0.52	0.059	<0.2	0.68	3	<10	170	<0.5	<2	1.49	<0.5	6	9	12	1.65
Q296637		1.11	0.009	0.3	0.50	<2	<10	260	<0.5	2	0.39	<0.5	17	8	7	2.13
Q296638		2.24	0.181	<0.2	0.07	<2	<10	130	<0.5	<2	0.02	<0.5	1	29	2	0.64
██████████		████	████	████	████	████	████	████	████	████	████	████	████	████	████	████
Q296656		0.56	<0.001	0.2	1.07	<2	<10	670	0.8	2	0.82	<0.5	11	109	39	3.34
Q296657		0.89	0.474	20.4	1.27	<2	<10	200	<0.5	317	3.65	<0.5	12	51	4370	2.71
Q296658		1.65	0.294	0.2	0.70	<2	<10	110	<0.5	<2	3.75	<0.5	8	9	33	2.27
██████████		████	████	████	████	████	████	████	████	████	████	████	████	████	████	████
Q296660		1.63	0.033	<0.2	0.26	<2	<10	390	<0.5	<2	0.15	<0.5	4	19	10	1.04
Q296661		1.71	0.003	2.3	0.33	<2	<10	10	<0.5	<2	0.31	<0.5	4	26	6520	2.06
Q296662		0.73	<0.001	<0.2	1.52	2	<10	30	<0.5	3	3.51	<0.5	15	81	25	2.59
Q296663		0.72	0.253	0.2	0.72	<2	<10	80	<0.5	<2	1.59	<0.5	7	40	43	1.51
Q296664		1.02	<0.001	<0.2	0.40	<2	<10	90	<0.5	<2	20.1	<0.5	2	16	7	0.77
Q296665		1.65	0.027	0.3	0.73	<2	<10	140	0.6	<2	2.96	<0.5	6	39	81	1.51
Q296666		1.92	0.004	0.5	0.81	3	<10	160	0.5	<2	2.04	<0.5	7	39	48	2.19
██████████		████	████	████	████	████	████	████	████	████	████	████	████	████	████	████
Q296668		1.55	0.028	0.5	1.83	<2	<10	140	2.1	2	1.94	<0.5	21	166	404	4.15
Q296669		1.68	0.002	<0.2	1.70	<2	<10	150	0.9	2	1.48	<0.5	17	113	67	3.72
Q296670		2.42	<0.001	<0.2	2.14	2	<10	10	<0.5	3	1.07	<0.5	52	45	232	7.08
Q296671		0.33	<0.001	0.2	1.94	2	<10	40	<0.5	3	0.97	<0.5	20	107	58	3.51
Q296672		0.26	<0.001	<0.2	1.19	<2	<10	50	<0.5	<2	1.16	<0.5	9	48	45	2.03



ALS Canada Ltd.
 2103 Dollarton Hwy
 North Vancouver BC V7H 0A7
 Phone: +1 (604) 984 0221 Fax: +1 (604) 984 0218
 www.alsglobal.com/geochemistry

To: NEW FOUND GOLD CORP.
 69 YONGE STREET
 SUITE 1010
 TORONTO ON M5E 1K3

Page: 2 - B
 Total # Pages: 3 (A - C)
 Plus Appendix Pages
 Finalized Date: 7 - SEP - 2018
 Account: PRCDVOXH

Project: LUCKY STRIKE

CERTIFICATE OF ANALYSIS TM18203749

Sample Description	Method Analyte Units LOD	ME - ICP41	ME - ICP41	ME - ICP41	ME - ICP41	ME - ICP41	ME - ICP41	ME - ICP41	ME - ICP41	ME - ICP41	ME - ICP41	ME - ICP41	ME - ICP41	ME - ICP41	ME - ICP41	
		Ga ppm	Hg ppm	K %	La ppm	Mg %	Mn ppm	Mo ppm	Na %	Ni ppm	P ppm	Pb ppm	S %	Sb ppm	Sc ppm	Sr ppm
		10	1	0.01	10	0.01	5	1	0.01	1	10	2	0.01	2	1	1
Q296618		<10	<1	0.08	10	0.82	318	1	0.01	13	380	11	0.15	<2	2	27
Q296619		10	<1	0.07	30	0.57	262	2	0.08	18	900	3	0.01	<2	2	75
Q296620		10	<1	0.07	<10	0.91	449	<1	<0.01	9	70	2	0.03	<2	<1	79
Q296621		10	<1	0.07	20	1.75	595	<1	0.01	37	840	3	0.44	<2	7	27
Q296622		<10	1	0.01	10	0.46	257	<1	0.01	12	270	85	0.47	<2	2	159
Q296623		10	<1	0.06	<10	1.55	690	4	0.05	153	490	<2	0.37	<2	6	35
Q296624		10	<1	0.21	20	2.21	737	2	0.01	42	710	8	0.96	<2	3	143
Q296625		<10	<1	0.05	<10	0.29	166	1	0.03	7	170	4	0.06	<2	2	25
Q296626		<10	<1	0.07	<10	0.26	144	1	0.01	7	140	4	0.10	<2	1	38
Q296627		<10	<1	0.10	10	0.68	293	1	0.02	15	430	4	0.57	<2	2	131
Q296629		<10	<1	0.06	<10	0.40	156	1	0.02	9	190	8	0.49	<2	1	32
Q296630		<10	<1	0.02	<10	0.17	142	<1	<0.01	5	10	3	0.04	<2	<1	34
Q296631		<10	<1	0.15	10	0.56	332	<1	0.01	9	440	9	0.66	<2	2	161
Q296632		10	1	0.02	<10	2.39	994	1	0.03	78	480	3	0.28	2	9	95
Q296633		<10	<1	0.10	10	0.24	284	1	0.01	9	250	11	0.46	<2	1	83
Q296634		<10	<1	0.08	10	0.08	170	<1	0.02	4	150	17	0.22	<2	<1	69
Q296635		<10	<1	0.10	10	0.38	226	<1	0.03	6	320	7	0.56	<2	1	53
Q296636		<10	<1	0.19	20	0.45	259	<1	0.03	11	400	3	0.18	<2	1	84
Q296637		<10	<1	0.13	10	0.34	180	2	0.03	17	530	6	0.89	2	1	51
Q296638		<10	<1	0.06	<10	0.02	53	8	0.01	3	20	2	0.03	<2	<1	9
Q296656		10	<1	0.02	10	1.26	354	1	0.04	44	1040	3	0.02	<2	5	45
Q296657		10	<1	0.02	30	1.12	454	<1	0.02	31	730	194	0.47	<2	4	312
Q296658		<10	<1	0.16	10	0.79	446	1	0.02	15	360	11	0.77	<2	3	300
Q296660		<10	<1	0.02	<10	0.21	212	<1	0.03	5	140	3	0.02	<2	1	26
Q296661		<10	<1	0.02	<10	0.20	98	1	0.01	10	30	4	0.61	<2	<1	4
Q296662		10	<1	0.04	10	1.51	542	<1	0.01	69	250	3	0.07	<2	5	91
Q296663		<10	<1	0.03	<10	0.66	343	22	0.01	29	120	3	0.04	<2	2	56
Q296664		<10	<1	0.02	<10	0.38	656	<1	0.01	15	90	6	0.01	<2	1	459
Q296665		<10	<1	0.10	20	0.61	335	1	0.03	17	250	57	0.06	<2	2	57
Q296666		10	<1	0.05	20	0.78	362	<1	0.03	18	530	10	0.07	<2	3	47
Q296668		10	1	0.02	40	2.09	475	2	0.04	77	1440	5	0.18	<2	8	51
Q296669		10	<1	0.05	20	1.79	436	2	0.04	57	1020	2	0.39	<2	7	44
Q296670		<10	<1	0.01	<10	1.55	1075	5	0.03	89	460	4	2.48	<2	3	87
Q296671		10	<1	0.02	20	1.78	495	12	0.03	99	290	4	0.02	2	7	248
Q296672		<10	<1	0.02	10	0.72	284	1	0.02	45	160	<2	0.06	<2	3	191



ALS Canada Ltd.
 2103 Dollarton Hwy
 North Vancouver BC V7H 0A7
 Phone: +1 (604) 984 0221 Fax: +1 (604) 984 0218
 www.alsglobal.com/geochemistry

To: NEW FOUND GOLD CORP.
 69 YONGE STREET
 SUITE 1010
 TORONTO ON M5E 1K3

Page: 2 - C
 Total # Pages: 3 (A - C)
 Plus Appendix Pages
 Finalized Date: 7 - SEP - 2018
 Account: PRCDVOXH

Project: LUCKY STRIKE

CERTIFICATE OF ANALYSIS TM18203749

Sample Description	Method Analyte Units LOD	ME - ICP41	ME - ICP41	ME - ICP41	ME - ICP41	ME - ICP41	ME - ICP41	
		Th	Ti	Tl	U	V	W	Zn
		ppm	%	ppm	ppm	ppm	ppm	ppm
		20	0.01	10	10	1	10	2
██████████		████	████	████	████	████	████	████
Q296618		<20	0.01	<10	10	31	<10	27
Q296619		<20	0.18	<10	<10	59	<10	29
Q296620		<20	0.01	<10	<10	50	<10	32
Q296621		<20	0.10	<10	<10	83	<10	59
Q296622		<20	0.06	<10	<10	39	<10	18
Q296623		<20	0.35	<10	<10	103	<10	53
Q296624		<20	0.07	<10	<10	45	<10	98
Q296625		<20	0.02	<10	<10	12	<10	14
Q296626		<20	<0.01	<10	<10	5	<10	12
Q296627		<20	0.01	<10	<10	14	<10	37
██████████		████	████	████	████	████	████	████
Q296629		<20	0.04	<10	<10	9	<10	23
Q296630		<20	<0.01	<10	<10	4	<10	6
Q296631		<20	<0.01	<10	<10	4	<10	33
Q296632		<20	0.41	<10	<10	114	<10	79
Q296633		<20	<0.01	<10	<10	4	<10	16
Q296634		<20	<0.01	<10	<10	2	<10	11
Q296635		<20	<0.01	<10	<10	5	<10	24
Q296636		<20	<0.01	<10	<10	6	<10	34
Q296637		<20	<0.01	<10	<10	7	<10	29
Q296638		<20	<0.01	<10	<10	4	<10	2
██████████		████	████	████	████	████	████	████
Q296656		<20	0.18	<10	<10	136	<10	41
Q296657		<20	0.12	<10	<10	60	<10	49
Q296658		<20	<0.01	<10	<10	5	<10	38
██████████		████	████	████	████	████	████	████
Q296660		<20	<0.01	<10	<10	5	<10	16
Q296661		<20	0.01	<10	<10	10	<10	13
Q296662		<20	0.16	<10	<10	63	<10	42
Q296663		<20	0.07	<10	<10	31	<10	23
Q296664		<20	0.03	<10	<10	14	<10	18
Q296665		<20	0.03	<10	50	41	<10	24
Q296666		<20	0.09	<10	10	70	<10	27
██████████		████	████	████	████	████	████	████
Q296668		<20	0.15	<10	10	133	<10	70
Q296669		<20	0.21	<10	<10	93	<10	60
Q296670		<20	0.22	<10	<10	41	<10	50
Q296671		<20	0.25	<10	<10	106	<10	45
Q296672		<20	0.14	<10	<10	62	<10	24



ALS Canada Ltd.
 2103 Dollarton Hwy
 North Vancouver BC V7H 0A7
 Phone: +1 (604) 984 0221 Fax: +1 (604) 984 0218
 www.alsglobal.com/geochemistry

To: NEW FOUND GOLD CORP.
 69 YONGE STREET
 SUITE 1010
 TORONTO ON M5E 1K3

Page: 3 - A
 Total # Pages: 3 (A - C)
 Plus Appendix Pages
 Finalized Date: 7 - SEP - 2018
 Account: PRCDVOXH

Project: LUCKY STRIKE

CERTIFICATE OF ANALYSIS TM18203749

Sample Description	Method Analyte Units LOD	WEI - 21	Au - ICP21	ME - ICP41	ME - ICP41	ME - ICP41	ME - ICP41	ME - ICP41	ME - ICP41	ME - ICP41	ME - ICP41	ME - ICP41	ME - ICP41	ME - ICP41	ME - ICP41	ME - ICP41
		Recvd Wt. kg	Au ppm	Ag ppm	Al %	As ppm	B ppm	Ba ppm	Be ppm	Bi ppm	Ca %	Cd ppm	Co ppm	Cr ppm	Cu ppm	Fe %
		0.02	0.001	0.2	0.01	2	10	10	0.5	2	0.01	0.5	1	1	1	0.01
Q296673		0.28	<0.001	<0.2	1.37	<2	<10	10	<0.5	<2	1.15	<0.5	12	80	19	2.07
Q296674		0.43	0.001	0.3	0.31	<2	<10	480	<0.5	<2	0.71	<0.5	3	22	52	1.31
Q296675		1.57	<0.001	<0.2	3.35	<2	<10	10	<0.5	4	1.04	<0.5	30	139	30	4.97
Q296676		0.79	0.665	35.3	0.76	<2	<10	220	0.5	383	3.88	<0.5	7	44	6180	2.38
Q296678		1.19	<0.001	<0.2	0.52	<2	<10	720	<0.5	<2	2.72	<0.5	3	18	264	1.12
Q296679		1.85	0.079	<0.2	1.29	<2	<10	120	0.5	<2	2.84	<0.5	12	20	36	2.94
Q296680		2.19	0.011	<0.2	0.90	2	<10	40	<0.5	<2	0.51	<0.5	8	33	21	1.79
Q296681		1.73	1.620	0.9	0.96	8	<10	50	0.6	<2	0.75	<0.5	10	23	37	2.28
Q296682		0.82	0.006	<0.2	2.15	2	<10	350	0.5	2	2.01	<0.5	25	100	100	4.47
Q296683		0.93	0.804	0.6	1.62	6	<10	50	0.6	<2	2.95	<0.5	21	43	25	3.26
Q296684		1.68	0.050	0.3	1.93	8	<10	140	0.6	3	3.40	<0.5	23	30	38	4.19
Q296685		1.45	1.385	0.4	0.63	2	<10	60	<0.5	<2	2.81	<0.5	8	9	9	2.10
Q296686		1.15	0.005	<0.2	1.98	2	<10	160	<0.5	<2	3.90	<0.5	22	55	38	3.43
Q296687		1.58	0.042	<0.2	0.66	<2	<10	80	<0.5	<2	1.16	<0.5	6	15	7	1.89
Q296689		0.88	0.001	<0.2	1.78	<2	<10	20	<0.5	<2	4.99	<0.5	23	64	25	3.16
Q296690		1.65	0.277	0.2	2.08	6	<10	190	0.5	2	5.89	<0.5	26	36	60	4.90
Q296691		1.71	0.168	0.3	0.96	2	<10	60	<0.5	2	2.71	<0.5	28	47	23	2.55
Q296692		0.91	0.072	0.2	2.03	9	<10	50	0.5	2	5.28	<0.5	39	58	95	4.08
Q296693		1.08	<0.001	<0.2	3.23	<2	<10	40	0.5	3	1.96	<0.5	41	125	68	5.83
Q296694		1.17	0.002	0.2	1.55	6	<10	310	<0.5	2	1.96	<0.5	22	83	42	3.35
Q296695		1.65	0.047	0.4	2.04	<2	<10	60	0.6	3	9.1	<0.5	29	57	61	5.02
Q296696		0.80	0.028	<0.2	0.59	<2	<10	800	<0.5	<2	1.76	<0.5	6	8	8	1.77
Q296697		1.31	0.255	0.3	2.28	2	<10	50	1.2	2	8.9	<0.5	22	66	50	4.94
Q296698		0.94	0.765	0.4	0.66	<2	<10	120	<0.5	<2	2.39	<0.5	9	11	7	2.17
Q296699		1.01	0.313	<0.2	0.50	3	<10	140	<0.5	<2	2.25	<0.5	16	23	32	2.78
Q296700		1.12	1.560	0.3	0.51	<2	<10	170	<0.5	<2	2.18	<0.5	5	11	13	1.63
Q294952		1.32	0.111	<0.2	0.41	<2	<10	30	<0.5	<2	2.42	<0.5	5	20	6	1.64
Q294953		0.60	0.085	0.2	0.28	3	<10	190	<0.5	<2	3.80	<0.5	14	12	26	2.66
Q294954		0.89	0.169	0.2	1.57	5	<10	140	0.6	2	1.56	<0.5	30	20	54	3.69
Q294955		0.88	0.029	<0.2	0.70	<2	<10	80	<0.5	<2	1.98	<0.5	10	8	15	2.54
Q294956		1.44	0.006	0.2	1.64	2	<10	190	0.6	2	6.04	<0.5	28	68	96	4.31
Q294957		0.39	0.014	<0.2	0.42	<2	<10	360	<0.5	<2	0.52	<0.5	3	14	10	1.33
Q294958		1.52	0.001	<0.2	0.56	<2	<10	730	0.5	<2	2.98	<0.5	8	22	29	1.86
Q294959		0.50	<0.001	<0.2	0.01	<2	<10	730	<0.5	<2	0.13	<0.5	<1	18	4	0.72



ALS Canada Ltd.
 2103 Dollarton Hwy
 North Vancouver BC V7H 0A7
 Phone: +1 (604) 984 0221 Fax: +1 (604) 984 0218
 www.alsglobal.com/geochemistry

To: NEW FOUND GOLD CORP.
 69 YONGE STREET
 SUITE 1010
 TORONTO ON M5E 1K3

Page: 3 - B
 Total # Pages: 3 (A - C)
 Plus Appendix Pages
 Finalized Date: 7 - SEP - 2018
 Account: PRCDVOXH

Project: LUCKY STRIKE

CERTIFICATE OF ANALYSIS TM18203749

Sample Description	Method Analyte Units LOD	ME - ICP41	ME - ICP41	ME - ICP41	ME - ICP41	ME - ICP41	ME - ICP41	ME - ICP41	ME - ICP41	ME - ICP41	ME - ICP41	ME - ICP41	ME - ICP41	ME - ICP41	ME - ICP41	
		Ga ppm	Hg ppm	K %	La ppm	Mg %	Mn ppm	Mo ppm	Na %	Ni ppm	P ppm	Pb ppm	S %	Sb ppm	Sc ppm	Sr ppm
		10	1	0.01	10	0.01	5	1	0.01	1	10	2	0.01	2	1	1
Q296673		<10	<1	0.02	10	0.89	289	1	0.05	52	180	3	0.03	<2	4	176
Q296674		<10	<1	0.04	10	0.22	181	5	0.01	9	70	4	0.02	<2	1	129
Q296675		10	<1	0.01	<10	3.05	590	<1	0.01	114	650	3	<0.01	<2	7	34
Q296676		10	<1	0.02	20	0.65	308	<1	0.03	22	490	249	0.62	<2	3	229
Q296678		<10	<1	0.01	50	0.27	236	1	0.02	7	260	5	0.07	<2	2	358
Q296679		10	<1	0.19	10	1.08	445	1	0.03	27	460	3	0.18	<2	5	56
Q296680		<10	<1	0.09	<10	0.72	227	1	0.02	27	320	8	0.28	<2	2	33
Q296681		<10	<1	0.12	10	0.69	292	1	0.01	23	300	14	0.37	<2	2	70
Q296682		10	<1	0.04	30	1.98	721	<1	0.04	64	1090	2	0.13	<2	7	104
Q296683		10	<1	0.10	10	1.72	494	3	0.01	62	60	8	0.39	2	5	187
Q296684		10	<1	0.16	10	1.66	625	6	<0.01	43	220	13	0.65	<2	5	307
Q296685		<10	<1	0.12	10	0.58	349	<1	0.02	14	260	12	0.82	<2	2	284
Q296686		10	<1	0.16	10	2.09	580	<1	0.01	51	470	2	0.63	<2	5	107
Q296687		<10	<1	0.08	<10	0.55	312	<1	0.02	12	290	4	0.50	<2	2	47
Q296689		<10	<1	0.11	<10	0.86	650	1	<0.01	81	390	<2	0.07	<2	6	116
Q296690		10	<1	0.17	<10	2.03	799	<1	<0.01	40	400	6	1.10	<2	9	343
Q296691		<10	<1	0.10	<10	0.76	574	4	0.02	47	510	10	0.85	<2	5	105
Q296692		10	<1	0.15	<10	1.37	784	1	<0.01	95	350	3	0.57	<2	7	102
Q296693		10	<1	0.10	<10	2.82	1325	<1	0.02	120	480	<2	0.22	<2	10	50
Q296694		10	<1	0.06	10	1.38	607	1	0.03	69	750	4	0.19	<2	4	80
Q296695		10	<1	0.16	<10	2.06	1035	4	0.01	60	740	6	1.52	<2	9	207
Q296696		<10	<1	0.09	10	0.42	309	1	0.03	10	420	5	0.33	<2	2	123
Q296697		10	<1	0.12	10	2.22	988	2	<0.01	35	1360	16	0.76	<2	13	311
Q296698		<10	<1	0.11	10	0.51	306	<1	0.03	12	410	5	1.08	<2	2	115
Q296699		<10	<1	0.15	10	0.97	450	8	<0.01	18	630	6	1.02	<2	5	160
Q296700		<10	<1	0.10	10	0.39	299	1	0.02	9	350	10	0.57	<2	1	141
Q294952		<10	<1	0.04	<10	0.60	393	<1	<0.01	8	70	2	0.17	<2	4	144
Q294953		<10	<1	0.18	10	1.10	617	2	<0.01	14	570	8	0.72	<2	4	245
Q294954		10	<1	0.22	10	1.38	456	2	0.01	47	440	16	0.61	<2	4	57
Q294955		<10	<1	0.14	10	0.57	429	1	0.02	14	500	4	1.11	<2	2	113
Q294956		10	<1	0.13	<10	1.58	1015	36	0.02	62	470	9	0.57	<2	10	115
Q294957		<10	<1	0.10	10	0.33	196	2	0.01	7	250	9	0.19	<2	1	43
Q294958		<10	<1	0.07	10	0.48	497	1	0.02	17	450	3	0.30	<2	3	136
Q294959		<10	<1	0.01	<10	0.01	82	1	<0.01	2	<10	<2	0.10	<2	<1	20



ALS Canada Ltd.
 2103 Dollarton Hwy
 North Vancouver BC V7H 0A7
 Phone: +1 (604) 984 0221 Fax: +1 (604) 984 0218
 www.alsglobal.com/geochemistry

To: NEW FOUND GOLD CORP.
 69 YONGE STREET
 SUITE 1010
 TORONTO ON M5E 1K3

Page: 3 - C
 Total # Pages: 3 (A - C)
 Plus Appendix Pages
 Finalized Date: 7 - SEP - 2018
 Account: PRCDVOXH

Project: LUCKY STRIKE

CERTIFICATE OF ANALYSIS TM18203749

Sample Description	Method Analyte Units LOD	ME - ICP41	ME - ICP41	ME - ICP41	ME - ICP41	ME - ICP41	ME - ICP41	
		Th	Ti	Tl	U	V	W	Zn
		ppm	%	ppm	ppm	ppm	ppm	ppm
		20	0.01	10	10	1	10	2
Q296673		<20	0.30	<10	<10	93	<10	32
Q296674		<20	0.03	<10	<10	37	<10	13
Q296675		<20	0.40	<10	<10	67	<10	64
Q296676		<20	0.11	<10	<10	56	<10	28
██████████		█	█	█	█	█	█	█
Q296678		<20	0.03	<10	<10	25	<10	27
Q296679		<20	0.10	<10	<10	23	<10	52
Q296680		<20	0.03	<10	<10	19	<10	27
Q296681		<20	0.01	<10	<10	17	<10	35
Q296682		<20	0.27	<10	<10	103	<10	76
Q296683		<20	0.01	<10	<10	38	<10	49
Q296684		<20	0.02	<10	<10	40	<10	63
Q296685		<20	<0.01	<10	<10	5	<10	34
Q296686		<20	0.11	<10	<10	58	<10	41
Q296687		<20	<0.01	<10	<10	9	<10	42
██████████		█	█	█	█	█	█	█
Q296689		<20	0.26	<10	<10	64	<10	40
Q296690		<20	0.03	<10	<10	52	<10	87
Q296691		<20	0.17	<10	<10	49	<10	37
Q296692		<20	0.22	<10	<10	57	<10	68
Q296693		<20	0.37	<10	<10	115	<10	114
Q296694		<20	0.21	<10	<10	66	<10	68
Q296695		<20	0.12	<10	<10	71	<10	83
Q296696		<20	<0.01	<10	<10	5	<10	37
Q296697		<20	<0.01	<10	<10	76	<10	89
Q296698		<20	<0.01	<10	<10	6	<10	33
Q296699		<20	<0.01	<10	<10	14	<10	40
Q296700		<20	<0.01	<10	<10	5	<10	30
Q294952		<20	<0.01	<10	<10	11	<10	30
Q294953		<20	<0.01	<10	<10	9	<10	45
Q294954		<20	0.01	<10	<10	25	<10	74
Q294955		<20	<0.01	<10	<10	7	<10	46
Q294956		<20	0.12	<10	<10	81	<10	74
Q294957		<20	<0.01	<10	<10	7	<10	28
Q294958		<20	0.04	<10	<10	28	<10	25
Q294959		<20	<0.01	<10	<10	1	<10	3
██████████		█	█	█	█	█	█	█



ALS Canada Ltd.
2103 Dollarton Hwy
North Vancouver BC V7H 0A7
Phone: +1 (604) 984 0221 Fax: +1 (604) 984 0218
www.alsglobal.com/geochemistry

To: **NEW FOUND GOLD CORP.**
69 YONGE STREET
SUITE 1010
TORONTO ON M5E 1K3

Page: Appendix 1
Total # Appendix Pages: 1
Finalized Date: 7-SEP-2018
Account: PRCDVOXH

Project: LUCKY STRIKE

CERTIFICATE OF ANALYSIS TM18203749

CERTIFICATE COMMENTS

LABORATORY ADDRESSES

Applies to Method: Processed at ALS Vancouver located at 2103 Dollarton Hwy, North Vancouver, BC, Canada.
Au-ICP21 ME-ICP41

Applies to Method: Processed at ALS Timmins located at Unit 10 - 2090 Riverside Drive, Timmins, ON, Canada.
CRU-36 CRU-QC LOG-21 LOG - 23
PUL-32 PUL-QC SPL-21 WEI - 21



ALS Canada Ltd.
 2103 Dollarton Hwy
 North Vancouver BC V7H 0A7
 Phone: +1 (604) 984 0221 Fax: +1 (604) 984 0218
 www.alsglobal.com/geochemistry

To: **NEW FOUND GOLD CORP.**
69 YONGE STREET
SUITE 1010
TORONTO ON M5E 1K3

1
 Total # Pages: Page - C)
 Plus Appendix Pages
 Finalized Date: 7-SEP-2018
 Account: PRCDVOXH

QC CERTIFICATE TM18203749

Project: LUCKY STRIKE

This report is for 77 Rock samples submitted to our lab in Timmins, ON, Canada on 20-AUG-2018.

The following have access to data associated with this certificate:

PETER DIMMELL KEN RATTEE	GREG MATHESON MICHAEL REGULAR	PETER MCINTYRE
-----------------------------	----------------------------------	----------------

SAMPLE PREPARATION	
ALS CODE	DESCRIPTION
WEI-21	Received Sample Weight
LOG-21	Sample logging - ClientBarCode
CRU-QC	Crushing QC Test
PUL-QC	Pulverizing QC Test
CRU-36	Fine Crushing - 85% <2mm
SPL-21	Split sample - riffle splitter
PUL-32	Pulverize 1000g to 85% < 75 um
LOG-23	Pulp Login - Rcvd with Barcode

ANALYTICAL PROCEDURES		
ALS CODE	DESCRIPTION	INSTRUMENT
ME-ICP41	35 Element Aqua Regia ICP-AES	ICP-AES
Au-ICP21	Au 30g FA ICP-AES Finish	ICP-AES

This is the Final Report and supersedes any preliminary report with this certificate number. Results apply to samples as submitted. All pages of this report have been checked and approved for release.

***** See Appendix Page for comments regarding this certificate *****

Signature: 
 Colin Ramshaw, Vancouver Laboratory Manager



ALS Canada Ltd.
 2103 Dollarton Hwy
 North Vancouver BC V7H 0A7
 Phone: +1 (604) 984 0221 Fax: +1 (604) 984 0218
 www.alsglobal.com/geochemistry

To: NEW FOUND GOLD CORP.
 69 YONGE STREET
 SUITE 1010
 TORONTO ON M5E 1K3

Page: 2 - A
 Total # Pages: 5 (A - C)
 Plus Appendix Pages
 Finalized Date: 7-SEP-2018
 Account: PRCDVOXH

Project: LUCKY STRIKE

QC CERTIFICATE OF ANALYSIS TM18203749

Method Analyte Units LOD	Au-ICP21	ME-ICP41	ME-ICP41	ME-ICP41	ME-ICP41	ME-ICP41	ME-ICP41	ME-ICP41	ME-ICP41	ME-ICP41	ME-ICP41	ME-ICP41	ME-ICP41	ME-ICP41	ME-ICP41	
Sample Description	Au ppm	Ag ppm	Al %	As ppm	B ppm	Ba ppm	Be ppm	Bi ppm	Ca %	Cd ppm	Co ppm	Cr ppm	Cu ppm	Fe %	Ga ppm	
	0.001	0.2	0.01	2	10	10	0.5	2	0.01	0.5	1	1	1	0.01	10	
STANDARDS																
AMIS0486	0.230															
Target Range - Lower Bound																
CDN-CM-34		3.5	2.31	102	<10	100	<0.5	4	1.41	0.7	40	177	5630	4.38	10	
CDN-CM-34		3.7	2.54	106	<10	110	<0.5	7	1.41	0.7	42	183	5850	4.50	10	
Target Range - Lower Bound		3.1	2.14	93	<10	70	<0.5	<2	1.20	<0.5	36	164	5390	3.91	<10	
		4.3	2.64	118	30	140	1.4	8	1.49	2.0	46	202	6210	4.80	30	
CDN-GS-P6A	0.758															
Upper Bound	0.693															
Target Range - Lower Bound	0.783															
EMOG-17		65.3	1.52	573	<10	40	<0.5	6	0.97	19.4	736	45	8090	4.63	<10	
EMOG-17		67.5	1.61	575	10	60	<0.5	6	0.98	19.5	767	46	8390	4.70	<10	
Upper Bound		59.3	1.45	503	<10	30	<0.5	<2	0.87	17.9	679	42	7780	4.18	<10	
Target Range - Lower Bound		72.9	1.79	619	20	80	1.5	10	1.09	22.9	833	54	8960	5.14	30	
G913-10	7.17															
Upper Bound	6.66															
Target Range - Lower Bound	7.52															
GPP-14	0.918															
GPP-14	0.910															
Upper Bound	0.853															
Target Range - Lower Bound	0.965															
JK-17	1.945															
Upper Bound	1.950															
JK-17	1.975															
Target Range - Lower Bound	1.875															
	2.12															
Upper Bound		4.4	2.66	35	<10	440	0.8	3	1.12	2.1	19	92	624	3.63	10	
Target Range - Lower Bound		3.8	2.44	27	<10	370	<0.5	<2	1.00	1.1	16	81	586	3.22	<10	
		5.1	3.00	39	20	530	1.9	5	1.24	3.4	22	102	676	3.96	30	
OREAS 503c	0.643															
OREAS 503c	0.697															
Upper Bound	0.685															
Target Range - Lower Bound	0.655															
	0.741															
Upper Bound		>100	0.61	673	<10	30	<0.5	60	0.55	26.1	10	31	5310	2.13	<10	
Target Range - Lower Bound		106.0	0.57	577	<10	<10	<0.5	50	0.46	22.2	7	26	4810	1.94	<10	
		100.0	0.71	709	20	50	1.3	66	0.59	28.2	12	34	5530	2.40	30	
PK2	4.79															
Upper Bound																

Upper Bound

**** See Appendix Page for comments regarding this certificate ****



ALS Canada Ltd.
 2103 Dollarton Hwy
 North Vancouver BC V7H 0A7
 Phone: +1 (604) 984 0221 Fax: +1 (604) 984 0218
 www.alsglobal.com/geochemistry

To: NEW FOUND GOLD CORP.
 69 YONGE STREET
 SUITE 1010
 TORONTO ON M5E 1K3

Page: 2 - B
 Total # Pages: 5 (A - C)
 Plus Appendix Pages
 Finalized Date: 7-SEP-2018
 Account: PRCDVOXH

Project: LUCKY STRIKE

QC CERTIFICATE OF ANALYSIS TM18203749

Sample Description	Method Analyte Units LOD	ME-ICP41 Hg ppm	ME-ICP41 K %	ME-ICP41 La ppm	ME-ICP41 Mg %	ME-ICP41 Mn ppm	ME-ICP41 Mo ppm	ME-ICP41 Na %	ME-ICP41 Ni ppm	ME-ICP41 P ppm	ME-ICP41 Pb ppm	ME-ICP41 S %	ME-ICP41 Sb ppm	ME-ICP41 Sc ppm	ME-ICP41 Sr ppm	ME-ICP41 Th ppm
		1	0.01	10	0.01	5	1	0.01	1	10	2	0.01	2	1	1	20
STANDARDS																
AMIS0486																
Target Range - Lower Bound																
CDN-CM-34		<1	1.17	10	2.55	298	266	0.10	217	1120	23	2.98	4	9	99	<20
CDN-CM-34		<1	1.26	10	2.58	298	277	0.11	232	1130	23	3.07	3	10	107	<20
Target Range - Lower Bound		<1	1.06	<10	2.27	269	245	0.08	204	1050	18	2.70	<2	8	92	<20
		2	1.32	30	2.80	340	301	0.13	252	1310	28	3.32	9	13	115	40
CDN-GS-P6A																
Upper Bound																
Target Range - Lower Bound																
EMOG-17		<1	0.65	20	0.79	634	1050	0.16	7400	750	7230	3.10	647	4	51	<20
EMOG-17		<1	0.68	20	0.78	637	1075	0.17	7780	740	7090	3.17	697	5	54	<20
Upper Bound		<1	0.60	<10	0.73	598	1015	0.15	6930	680	6500	2.90	572	3	47	<20
Target Range - Lower Bound		3	0.76	40	0.91	742	1245	0.20	8470	850	7950	3.56	778	7	59	50
G913-10																
Upper Bound																
Target Range - Lower Bound																
GPP-14																
Upper Bound																
Target Range - Lower Bound																
JK-17																
Upper Bound																
Target Range - Lower Bound																
Upper Bound		<1	1.26	30	1.15	426	14	0.34	697	1010	1070	0.31	3	7	81	20
Target Range - Lower Bound		<1	1.12	20	1.03	378	12	0.30	621	900	957	0.27	<2	5	71	<20
		2	1.40	60	1.29	473	17	0.39	761	1130	1175	0.35	8	10	89	60
OREAS 503c																
Upper Bound		<1	0.09	10	0.10	219	4	0.02	63	230	857	2.06	59	1	49	<20
Target Range - Lower Bound		<1	0.07	<10	0.08	193	2	<0.01	54	210	768	1.81	51	<1	44	<20
		3	0.12	30	0.13	247	7	0.05	68	280	944	2.23	73	3	56	40
PK2																
Upper Bound																

Upper Bound

**** See Appendix Page for comments regarding this certificate ****



ALS Canada Ltd.
 2103 Dollarton Hwy
 North Vancouver BC V7H 0A7
 Phone: +1 (604) 984 0221 Fax: +1 (604) 984 0218
 www.alsglobal.com/geochemistry

To: NEW FOUND GOLD CORP.
 69 YONGE STREET
 SUITE 1010
 TORONTO ON M5E 1K3

Total # Pages: 2A-CC)
 Plus Appendix Pages
 Finalized Date: 7-SEP-2018
 Account: PRCDVOXH

Project: LUCKY STRIKE

QC CERTIFICATE OF ANALYSIS TM18203749

Sample Description	Method Analyte Units LOD	ME-ICP41 Ti %	ME-ICP41 Ti ppm	ME-ICP41 U ppm	ME-ICP41 V ppm	ME-ICP41 W ppm	ME-ICP41 Zn ppm
		0.01	10	10	1	10	2
STANDARDS							
AMIS0486	Target Range - Lower Bound						
CDN-CM-34		0.17	<10	<10	102	10	173
CDN-CM-34		0.18	<10	<10	108	10	172
Target Range - Lower Bound		0.15	<10	<10	95	<10	159
		0.21	20	20	118	30	199
CDN-GS-P6A	Upper Bound						
EMOG-17		0.20	<10	<10	62	<10	7370
EMOG-17		0.21	<10	<10	65	<10	7130
Upper Bound		0.18	<10	<10	58	<10	6780
Target Range - Lower Bound		0.25	20	20	74	20	8290
G913-10	Upper Bound						
Target Range - Lower Bound							
GPP-14	Upper Bound						
GPP-14	Target Range - Lower Bound						
JK-17	Upper Bound						
JK-17	Target Range - Lower Bound						
Upper Bound		0.38	<10	<10	103	<10	780
Target Range - Lower Bound		0.33	<10	<10	90	<10	708
		0.43	20	30	112	20	870
OREAS 503c	Upper Bound						
OREAS 503c	Target Range - Lower Bound						
OREAS 503c	Upper Bound						
Target Range - Lower Bound		0.01	<10	<10	10	<10	4120
OREAS 502	Target Range - Lower Bound	<0.01	<10	<10	8	<10	3680
		0.03	20	20	14	20	4500
PK2	Upper Bound						

Upper Bound

***** See Appendix Page for comments regarding this certificate *****



ALS Canada Ltd.
 2103 Dollarton Hwy
 North Vancouver BC V7H 0A7
 Phone: +1 (604) 984 0221 Fax: +1 (604) 984 0218
 www.alsglobal.com/geochemistry

To: NEW FOUND GOLD CORP.
 69 YONGE STREET
 SUITE 1010
 TORONTO ON M5E 1K3

Page: 3 - A
 Total # Pages: 5 (A - C)
 Plus Appendix Pages
 Finalized Date: 7-SEP-2018
 Account: PRCDVOXH

Project: LUCKY STRIKE

QC CERTIFICATE OF ANALYSIS TM18203749

Method Analyte Units LOD	Au-ICP21	ME-ICP41	ME-ICP41	ME-ICP41	ME-ICP41	ME-ICP41	ME-ICP41	ME-ICP41	ME-ICP41	ME-ICP41	ME-ICP41	ME-ICP41	ME-ICP41	ME-ICP41	ME-ICP41	
Sample Description	Au ppm	Ag ppm	Al %	As ppm	B ppm	Ba ppm	Be ppm	Bi ppm	Ca %	Cd ppm	Co ppm	Cr ppm	Cu ppm	Fe %	Ga ppm	
	0.001	0.2	0.01	2	10	10	0.5	2	0.01	0.5	1	1	1	0.01	10	
STANDARDS																
PK2	4.87															
PK2	4.84															
Target Range - Lower Bound	4.50															
	5.07															
WCM-PG135	0.693															
Target Range - Lower Bound	0.607															
	0.687															
BLANKS																
Upper Bound																
BLANK	0.012															
BLANK	<0.001															
Upper Bound	<0.001															
BLANK	<0.001															
Target Range - Lower Bound	<0.001															
	0.002															
BLANK		<0.2	<0.01	<2	<10	<10	<0.5	<2	<0.01	<0.5	<1	<1	<1	<0.01	<10	
BLANK		<0.2	<0.01	<2	<10	<10	<0.5	<2	<0.01	<0.5	<1	<1	<1	<0.01	<10	
BLANK		<0.2	<0.01	<2	<10	<10	<0.5	<2	<0.01	<0.5	<1	<1	<1	<0.01	<10	
Target Range - Lower Bound		<0.2	<0.01	<2	<10	<10	<0.5	<2	<0.01	<0.5	<1	<1	<1	<0.01	<10	
		0.4	0.02	4	20	20	1.0	4	0.02	1.0	2	2	2	0.02	20	
Upper Bound																
DUPLICATES																
ORIGINAL	<0.001															
DUP	<0.001															
Target Range - Lower Bound	<0.001															
	0.002															
Q296659		0.7	1.51	16	<10	40	<0.5	2	1.09	<0.5	31	154	73	3.56	<10	
DUP		0.7	1.57	16	<10	40	<0.5	<2	1.12	<0.5	31	156	73	3.69	<10	
Target Range - Lower Bound		0.5	1.45	13	<10	30	<0.5	<2	1.04	<0.5	28	146	69	3.43	<10	
		0.9	1.63	19	20	50	1.0	4	1.17	1.0	34	164	77	3.82	20	
Upper Bound																
Upper Bound																

***** See Appendix Page for comments regarding this certificate *****



ALS Canada Ltd.
 2103 Dollarton Hwy
 North Vancouver BC V7H 0A7
 Phone: +1 (604) 984 0221 Fax: +1 (604) 984 0218
 www.alsglobal.com/geochemistry

To: NEW FOUND GOLD CORP.
 69 YONGE STREET
 SUITE 1010
 TORONTO ON M5E 1K3

Page: 3 - B
 Total # Pages: 5 (A - C)
 Plus Appendix Pages
 Finalized Date: 7-SEP-2018
 Account: PRCDVOXH

Project: LUCKY STRIKE

QC CERTIFICATE OF ANALYSIS TM18203749

Method Analyte Units LOD	ME-ICP41 Hg ppm	ME-ICP41 K %	ME-ICP41 La ppm	ME-ICP41 Mg %	ME-ICP41 Mn ppm	ME-ICP41 Mo ppm	ME-ICP41 Na %	ME-ICP41 Ni ppm	ME-ICP41 P ppm	ME-ICP41 Pb ppm	ME-ICP41 S %	ME-ICP41 Sb ppm	ME-ICP41 Sc ppm	ME-ICP41 Sr ppm	ME-ICP41 Th ppm
Sample Description	1	0.01	10	0.01	5	1	0.01	1	10	2	0.01	2	1	1	20
STANDARDS															
PK2															
PK2															
Target Range - Lower Bound															
WCM-PG135															
Target Range - Lower Bound															
BLANKS															
Upper Bound															
BLANK															
BLANK															
BLANK															
BLANK															
Target Range - Lower Bound															
BLANK	<1	<0.01	<10	<0.01	<5	<1	<0.01	1	<10	<2	<0.01	<2	<1	<1	<20
BLANK	<1	<0.01	<10	<0.01	<5	<1	<0.01	<1	<10	<2	<0.01	<2	<1	<1	<20
BLANK	<1	<0.01	<10	<0.01	<5	<1	<0.01	2	<10	<2	<0.01	<2	<1	<1	<20
Target Range - Lower Bound	<1	<0.01	<10	<0.01	<5	<1	<0.01	<1	<10	<2	<0.01	<2	<1	<1	<20
Upper Bound	2	0.02	20	0.02	10	2	0.02	2	20	4	0.02	4	2	2	40
DUPLICATES															
ORIGINAL															
DUP															
Target Range - Lower Bound															
Q296659	<1	0.09	10	2.45	413	3	0.26	230	1230	6	0.04	<2	4	83	<20
DUP	<1	0.09	10	2.49	423	3	0.27	233	1240	5	0.05	<2	4	86	<20
Target Range - Lower Bound	<1	0.08	<10	2.34	392	2	0.24	219	1160	3	0.03	<2	3	79	<20
Upper Bound	2	0.10	20	2.60	444	4	0.29	244	1310	8	0.06	4	5	90	40
Upper Bound															



ALS Canada Ltd.
 2103 Dollarton Hwy
 North Vancouver BC V7H 0A7
 Phone: +1 (604) 984 0221 Fax: +1 (604) 984 0218
 www.alsglobal.com/geochemistry

To: NEW FOUND GOLD CORP.
 69 YONGE STREET
 SUITE 1010
 TORONTO ON M5E 1K3

Total # Pages: 3A-CC)
 Plus Appendix Pages
 Finalized Date: 7-SEP-2018
 Account: PRCDVOXH

Project: LUCKY STRIKE

QC CERTIFICATE OF ANALYSIS TM18203749

Sample Description	Method Analyte Units LOD	ME-ICP41 Ti %	ME-ICP41 TI ppm	ME-ICP41 U ppm	ME-ICP41 V ppm	ME-ICP41 W ppm	ME-ICP41 Zn ppm
		0.01	10	10	1	10	2
STANDARDS							
PK2							
PK2							
Target Range - Lower Bound							
WCM-PG135							
Target Range - Lower Bound							
BLANKS							
Upper Bound							
BLANK							
BLANK							
BLANK							
BLANK							
Target Range - Lower Bound							
BLANK		<0.01	<10	<10	<1	<10	<2
BLANK		<0.01	<10	<10	<1	<10	<2
BLANK		<0.01	<10	<10	<1	<10	<2
Target Range - Lower Bound		<0.01	<10	<10	<1	<10	<2
Upper Bound		0.02	20	20	2	20	4
DUPLICATES							
ORIGINAL							
DUP							
Target Range - Lower Bound							
Q296659		0.21	<10	<10	60	<10	49
DUP		0.22	<10	<10	62	<10	50
Target Range - Lower Bound		0.19	<10	<10	57	<10	45
Upper Bound		0.24	20	20	65	20	54
Upper Bound							

***** See Appendix Page for comments regarding this certificate *****



ALS Canada Ltd.
 2103 Dollarton Hwy
 North Vancouver BC V7H 0A7
 Phone: +1 (604) 984 0221 Fax: +1 (604) 984 0218
 www.alsglobal.com/geochemistry

To: NEW FOUND GOLD CORP.
 69 YONGE STREET
 SUITE 1010
 TORONTO ON M5E 1K3

Page: 4 - A
 Total # Pages: 5 (A - C)
 Plus Appendix Pages
 Finalized Date: 7-SEP-2018
 Account: PRCDVOXH

Project: LUCKY STRIKE

QC CERTIFICATE OF ANALYSIS TM18203749

Sample Description	Method Analyte Units LOD	Au-ICP21	ME-ICP41	ME-ICP41	ME-ICP41	ME-ICP41	ME-ICP41	ME-ICP41	ME-ICP41	ME-ICP41	ME-ICP41	ME-ICP41	ME-ICP41	ME-ICP41	ME-ICP41	
		Au ppm	Ag ppm	Al %	As ppm	B ppm	Ba ppm	Be ppm	Bi ppm	Ca %	Cd ppm	Co ppm	Cr ppm	Cu ppm	Fe %	Ga ppm
		0.001	0.2	0.01	2	10	10	0.5	2	0.01	0.5	1	1	1	0.01	10
DUPLICATES																
Q296672		<0.001														
DUP		<0.001														
Target Range - Lower Bound		<0.001														
Upper Bound		0.002														
Q296695			0.4	2.04	<2	<10	60	0.6	3	9.1	<0.5	29	57	61	5.02	10
DUP			0.4	2.14	4	<10	60	0.6	3	9.30	<0.5	31	60	61	5.16	10
Target Range - Lower Bound			<0.2	1.98	<2	<10	50	<0.5	<2	8.73	<0.5	28	55	58	4.83	<10
Upper Bound			0.6	2.20	4	20	70	1.0	4	9.67	1.0	33	62	64	5.35	20
ORIGINAL		<0.001														
DUP		<0.001														
Target Range - Lower Bound		<0.001														
Upper Bound		0.002														
ORIGINAL			2.3	2.09	25	<10	50	<0.5	2	0.09	<0.5	3	8	27	4.83	10
DUP			2.4	2.11	26	<10	50	<0.5	2	0.10	<0.5	4	8	27	4.86	10
Target Range - Lower Bound			2.0	1.99	22	<10	40	<0.5	<2	0.08	<0.5	2	7	25	4.59	<10
Upper Bound			2.7	2.22	29	20	60	1.0	4	0.11	1.0	5	9	29	5.10	20
ORIGINAL		0.028														
DUP		0.024														
Target Range - Lower Bound		0.024														
Upper Bound		0.028														
ORIGINAL		0.019														
DUP		0.018														
Target Range - Lower Bound		0.017														
Upper Bound		0.020														
ORIGINAL		0.003														
DUP		0.001														
Target Range - Lower Bound		<0.001														
Upper Bound		0.003														
ORIGINAL		0.001														
DUP		<0.001														
Target Range - Lower Bound		<0.001														
Upper Bound		0.002														

Upper Bound
 ***** See Appendix Page for comments regarding this certificate *****



ALS Canada Ltd.
 2103 Dollarton Hwy
 North Vancouver BC V7H 0A7
 Phone: +1 (604) 984 0221 Fax: +1 (604) 984 0218
 www.alsglobal.com/geochemistry

To: NEW FOUND GOLD CORP.
 69 YONGE STREET
 SUITE 1010
 TORONTO ON M5E 1K3

Page: 4 - B
 Total # Pages: 5 (A - C)
 Plus Appendix Pages
 Finalized Date: 7-SEP-2018
 Account: PRCDVOXH

Project: LUCKY STRIKE

QC CERTIFICATE OF ANALYSIS TM18203749

Sample Description	Method Analyte Units LOD	ME-ICP41 Hg ppm	ME-ICP41 K %	ME-ICP41 La ppm	ME-ICP41 Mg %	ME-ICP41 Mn ppm	ME-ICP41 Mo ppm	ME-ICP41 Na %	ME-ICP41 Ni ppm	ME-ICP41 P ppm	ME-ICP41 Pb ppm	ME-ICP41 S %	ME-ICP41 Sb ppm	ME-ICP41 Sc ppm	ME-ICP41 Sr ppm	ME-ICP41 Th ppm
		1	0.01	10	0.01	5	1	0.01	1	10	2	0.01	2	1	1	20
DUPLICATES																
Q296672 DUP Target Range - Lower Bound																
Q296695 DUP Target Range - Lower Bound		<1	0.16	<10	2.06	1035	4	0.01	60	740	6	1.52	<2	9	207	<20
Upper Bound		<1	0.17	<10	2.13	1050	4	0.01	60	750	7	1.53	<2	10	211	<20
Upper Bound		<1	0.15	<10	1.98	985	3	<0.01	56	700	4	1.44	<2	8	198	<20
Upper Bound		2	0.18	20	2.21	1100	5	0.02	64	790	9	1.61	4	11	220	40
ORIGINAL DUP Target Range - Lower Bound																
Upper Bound																
ORIGINAL DUP Target Range - Lower Bound		<1	0.10	<10	0.81	1300	1	0.01	6	530	4	0.12	<2	2	4	<20
Upper Bound		<1	0.11	<10	0.81	1320	<1	0.01	6	540	4	0.12	<2	2	3	<20
Upper Bound		<1	0.09	<10	0.76	1240	<1	<0.01	5	500	<2	0.10	<2	<1	2	<20
Upper Bound		2	0.12	20	0.86	1380	2	0.02	7	570	6	0.14	4	3	5	40
ORIGINAL DUP Target Range - Lower Bound																
Upper Bound																
ORIGINAL DUP Target Range - Lower Bound																
Upper Bound																
ORIGINAL DUP Target Range - Lower Bound																
Upper Bound																

Upper Bound
 ***** See Appendix Page for comments regarding this certificate *****



ALS Canada Ltd.
 2103 Dollarton Hwy
 North Vancouver BC V7H 0A7
 Phone: +1 (604) 984 0221 Fax: +1 (604) 984 0218
 www.alsglobal.com/geochemistry

To: NEW FOUND GOLD CORP.
 69 YONGE STREET
 SUITE 1010
 TORONTO ON M5E 1K3

Total # Pages: 4 (A-C)
 Plus Appendix Pages
 Finalized Date: 7-SEP-2018
 Account: PRCDVOXH

Project: LUCKY STRIKE

QC CERTIFICATE OF ANALYSIS TM18203749

Sample Description	Method Analyte Units LOD	ME-ICP41 Ti %	ME-ICP41 Tl ppm	ME-ICP41 U ppm	ME-ICP41 V ppm	ME-ICP41 W ppm	ME-ICP41 Zn ppm
		0.01	10	10	1	10	2
DUPLICATES							
Q296672 DUP Target Range - Lower Bound Upper Bound							
Q296695 DUP Target Range - Lower Bound Upper Bound		0.12 0.14 0.11 0.15	<10 <10 <10 20	<10 <10 <10 20	71 76 69 78	<10 <10 <10 20	83 85 78 90
ORIGINAL DUP Target Range - Lower Bound Upper Bound							
ORIGINAL DUP Target Range - Lower Bound Upper Bound		<0.01 <0.01 <0.01 0.02	<10 <10 <10 20	<10 <10 <10 20	19 19 17 21	<10 <10 <10 20	207 209 196 220
ORIGINAL DUP Target Range - Lower Bound Upper Bound							
ORIGINAL DUP Target Range - Lower Bound Upper Bound							
ORIGINAL DUP Target Range - Lower Bound Upper Bound							
ORIGINAL DUP Target Range - Lower Bound Upper Bound							

Upper Bound
 ***** See Appendix Page for comments regarding this certificate *****



ALS Canada Ltd.
 2103 Dollarton Hwy
 North Vancouver BC V7H 0A7
 Phone: +1 (604) 984 0221 Fax: +1 (604) 984 0218
 www.alsglobal.com/geochemistry

To: NEW FOUND GOLD CORP.
 69 YONGE STREET
 SUITE 1010
 TORONTO ON M5E 1K3

Page: 5 - A
 Total # Pages: 5 (A - C)
 Plus Appendix Pages
 Finalized Date: 7-SEP-2018
 Account: PRCDVOXH

Project: LUCKY STRIKE

QC CERTIFICATE OF ANALYSIS	TM18203749
----------------------------	------------

Sample Description	Method Analyte Units	Au-ICP21	ME-ICP41	ME-ICP41	ME-ICP41	ME-ICP41	ME-ICP41	ME-ICP41	ME-ICP41	ME-ICP41	ME-ICP41	ME-ICP41	ME-ICP41	ME-ICP41	ME-ICP41	
	LOD	Au ppm	Ag ppm	Al %	As ppm	B ppm	Ba ppm	Be ppm	Bi ppm	Ca %	Cd ppm	Co ppm	Cr ppm	Cu ppm	Fe %	Ga ppm
		0.001	0.2	0.01	2	10	10	0.5	2	0.01	0.5	1	1	1	0.01	10
DUPLICATES																
ORIGINAL		<0.001														
DUP		<0.001														
Target Range - Lower Bound		<0.001														
		0.002														
Upper Bound																

***** See Appendix Page for comments regarding this certificate *****



ALS Canada Ltd.
 2103 Dollarton Hwy
 North Vancouver BC V7H 0A7
 Phone: +1 (604) 984 0221 Fax: +1 (604) 984 0218
 www.alsglobal.com/geochemistry

To: NEW FOUND GOLD CORP.
 69 YONGE STREET
 SUITE 1010
 TORONTO ON M5E 1K3

Page: 5 - B
 Total # Pages: 5 (A - C)
 Plus Appendix Pages
 Finalized Date: 7-SEP-2018
 Account: PRCDVOXH

Project: LUCKY STRIKE

QC CERTIFICATE OF ANALYSIS TM18203749

Method Analyte Units LOD	ME-ICP41	ME-ICP41	ME-ICP41	ME-ICP41	ME-ICP41	ME-ICP41	ME-ICP41	ME-ICP41	ME-ICP41	ME-ICP41	ME-ICP41	ME-ICP41	ME-ICP41	ME-ICP41	ME-ICP41
Sample Description	Hg ppm	K %	La ppm	Mg %	Mn ppm	Mo ppm	Na %	Ni ppm	P ppm	Pb ppm	S %	Sb ppm	Sc ppm	Sr ppm	Th ppm
	1	0.01	10	0.01	5	1	0.01	1	10	2	0.01	2	1	1	20

DUPLICATES

ORIGINAL
 DUP
 Target Range - Lower Bound

Upper Bound



ALS Canada Ltd.
 2103 Dollarton Hwy
 North Vancouver BC V7H 0A7
 Phone: +1 (604) 984 0221 Fax: +1 (604) 984 0218
 www.alsglobal.com/geochemistry

To: NEW FOUND GOLD CORP.
 69 YONGE STREET
 SUITE 1010
 TORONTO ON M5E 1K3

Total # Pages: 5A-CC)
 Plus Appendix Pages
 Finalized Date: 7-SEP-2018
 Account: PRCDVOXH

Project: LUCKY STRIKE

QC CERTIFICATE OF ANALYSIS TM18203749

Sample Description	Method Analyte Units LOD	ME-ICP41 Ti %	ME-ICP41 Ti ppm	ME-ICP41 U ppm	ME-ICP41 V ppm	ME-ICP41 W ppm	ME-ICP41 Zn ppm
		0.01	10	10	1	10	2
ORIGINAL DUP Target Range - Lower Bound	DUPLICATES						
Upper Bound							



ALS Canada Ltd.
2103 Dollarton Hwy
North Vancouver BC V7H 0A7
Phone: +1 (604) 984 0221 Fax: +1 (604) 984 0218
www.alsglobal.com/geochemistry

To: NEW FOUND GOLD CORP.
69 YONGE STREET
SUITE 1010
TORONTO ON M5E 1K3

Page: Appendix 1
Total # Appendix Pages: 1
Finalized Date: 7-SEP-2018
Account: PRCDVOXH

Project: LUCKY STRIKE

QC CERTIFICATE OF ANALYSIS TM18203749

CERTIFICATE COMMENTS

LABORATORY ADDRESSES

Applies to Method:	Processed at ALS Vancouver located at 2103 Dollarton Hwy, North Vancouver, BC, Canada. Au-ICP21 ME-ICP41
Applies to Method:	Processed at ALS Timmins located at Unit 10 - 2090 Riverside Drive, Timmins, ON, Canada. CRU-36 CRU-QC LOG-21 LOG-23 PUL-32 PUL-QC SPL-21 WEI-21



ALS Canada Ltd.
 2103 Dollarton Hwy
 North Vancouver BC V7H 0A7
 Phone: +1 (604) 984 0221 Fax: +1 (604) 984 0218
 www.alsglobal.com/geochemistry

To: **NEW FOUND GOLD CORP.**
69 YONGE STREET
SUITE 1010
TORONTO ON M5E 1K3

Page: 1
 Total # Pages: 2 (A - C) Plus
 Appendix Pages Finalized
 Date: 27-SEP-2018 Account:
 PRCDVOXH

CERTIFICATE TM18225130

Project: LUCKY STRIKE

This report is for 35 Rock samples submitted to our lab in Timmins, ON, Canada on 11-SEP-2018.

The following have access to data associated with this certificate:

PETER DIMMELL KEN RATTEE	GREG MATHESON MICHAEL REGULAR	PETER MCINTYRE
-----------------------------	----------------------------------	----------------

SAMPLE PREPARATION	
ALS CODE	DESCRIPTION
WEI-21	Received Sample Weight
LOG-21	Sample logging - ClientBarCode
CRU-QC	Crushing QC Test
PUL-QC	Pulverizing QC Test
CRU-36	Fine Crushing - 85% <2mm
SPL-21	Split sample - riffle splitter
PUL-32	Pulverize 1000g to 85% < 75 um
LOG-23	Pulp Login - Rcvd with Barcode

ANALYTICAL PROCEDURES		
ALS CODE	DESCRIPTION	INSTRUMENT
ME-ICP41	35 Element Aqua Regia ICP-AES	ICP-AES
ME-OG46	Ore Grade Elements - AquaRegia	ICP-AES
Cu-OG46	Ore Grade Cu - Aqua Regia	
Au-ICP21	Au 30g FA ICP-AES Finish	ICP-AES

This is the Final Report and supersedes any preliminary report with this certificate number. Results apply to samples as submitted. All pages of this report have been checked and approved for release.

***** See Appendix Page for comments regarding this certificate *****

Signature: 
 Colin Ramshaw, Vancouver Laboratory Manager



ALS Canada Ltd.
 2103 Dollarton Hwy
 North Vancouver BC V7H 0A7
 Phone: +1 (604) 984 0221 Fax: +1 (604) 984 0218
 www.alsglobal.com/geochemistry

To: NEW FOUND GOLD CORP.
 69 YONGE STREET
 SUITE 1010
 TORONTO ON M5E 1K3

Page: 2 - A
 Total # Pages: 2 (A - C) Plus
 Appendix Pages Finalized
 Date: 27-SEP-2018 Account:
 PRCDVOXH

Project: LUCKY STRIKE

CERTIFICATE OF ANALYSIS TM18225130

Sample Description	Method	WEI-21	Au-ICP21	ME-ICP41	ME-ICP41	ME-ICP41	ME-ICP41	ME-ICP41	ME-ICP41	ME-ICP41	ME-ICP41	ME-ICP41	ME-ICP41	ME-ICP41	ME-ICP41	ME-ICP41
	Analyte	Recvd Wt.	Au	Ag	Al	As	B	Ba	Be	Bi	Ca	Cd	Co	Cr	Cu	Fe
Units		kg	ppm	ppm	%	ppm	ppm	ppm	ppm	ppm	%	ppm	ppm	ppm	ppm	%
LOD		0.02	0.001	0.2	0.01	2	10	10	0.5	2	0.01	0.5	1	1	1	0.01
Q296647		1.86	0.025	<0.2	0.44	<2	<10	1000	0.7	<2	1.16	<0.5	9	16	48	1.91
Q296648		2.39	0.001	<0.2	0.44	<2	<10	620	<0.5	<2	0.78	<0.5	5	14	42	1.62
Q296649		2.25	0.008	<0.2	0.70	<2	<10	90	<0.5	<2	2.02	<0.5	7	14	28	2.17
Q297351		2.00	0.799	0.2	0.71	<2	<10	180	<0.5	<2	1.89	<0.5	8	7	4	2.13
Q297352		1.23	0.009	<0.2	0.63	<2	<10	60	1.0	<2	1.26	<0.5	13	16	6	2.29
Q294969		1.40	0.061	<0.2	0.98	3	<10	120	0.8	<2	8.8	<0.5	26	35	13	3.73
Q294971		1.19	0.015	<0.2	0.37	<2	<10	150	<0.5	<2	0.66	<0.5	4	11	8	1.00
Q294972		0.96	<0.001	<0.2	0.52	<2	<10	1040	<0.5	<2	0.29	<0.5	9	22	8	2.36
Q294973		1.38	0.395	<0.2	0.75	<2	<10	890	0.6	<2	2.71	<0.5	8	11	10	1.87



ALS Canada Ltd.
 2103 Dollarton Hwy
 North Vancouver BC V7H 0A7
 Phone: +1 (604) 984 0221 Fax: +1 (604) 984 0218
 www.alsglobal.com/geochemistry

To: NEW FOUND GOLD CORP.
 69 YONGE STREET
 SUITE 1010
 TORONTO ON M5E 1K3

Page: 2 - B
 Total # Pages: 2 (A - C) Plus
 Appendix Pages Finalized
 Date: 27-SEP-2018 Account:
 PRCDVOXH

Project: LUCKY STRIKE

CERTIFICATE OF ANALYSIS TM18225130

Sample Description	Method	ME-ICP41	ME-ICP41	ME-ICP41	ME-ICP41	ME-ICP41	ME-ICP41	ME-ICP41	ME-ICP41	ME-ICP41	ME-ICP41	ME-ICP41	ME-ICP41	ME-ICP41	ME-ICP41	
	Analyte	Ga	Hg	K	La	Mg	Mn	Mo	Na	Ni	P	Pb	S	Sb	Sc	Sr
Units		ppm	ppm	%	ppm	%	ppm	ppm	%	ppm	ppm	ppm	%	ppm	ppm	ppm
LOD		10	1	0.01	10	0.01	5	1	0.01	1	10	2	0.01	2	1	1
Q296647		<10	<1	0.12	10	0.31	317	<1	0.05	14	520	3	0.24	<2	3	167
Q296648		<10	<1	0.09	10	0.33	473	17	0.04	9	580	4	0.09	<2	2	118
Q296649		<10	<1	0.07	10	0.63	308	1	0.04	12	260	6	0.60	<2	2	90
Q297351		<10	<1	0.16	10	0.54	267	<1	0.03	11	360	5	1.06	<2	2	92
Q297352		<10	<1	0.07	10	0.85	521	<1	0.04	19	510	9	1.38	<2	5	114
Q294969		<10	<1	0.13	10	1.69	1095	2	0.02	109	350	5	1.08	<2	6	339
Q294971		<10	<1	0.04	<10	0.30	118	2	0.04	6	350	<2	0.20	<2	1	34
Q294972		<10	<1	0.08	10	0.63	355	<1	0.05	20	510	5	0.10	<2	4	122
Q294973		<10	<1	0.13	10	0.59	358	<1	0.02	12	410	6	0.23	<2	2	133



ALS Canada Ltd.
 2103 Dollarton Hwy
 North Vancouver BC V7H 0A7
 Phone: +1 (604) 984 0221 Fax: +1 (604) 984 0218
 www.alsglobal.com/geochemistry

To: NEW FOUND GOLD CORP.
 69 YONGE STREET
 SUITE 1010
 TORONTO ON M5E 1K3

Page: 2 - C
 Total # Pages: 2 (A - C) Plus
 Appendix Pages Finalized
 Date: 27-SEP-2018 Account:
 PRCDVOXH

Project: LUCKY STRIKE

CERTIFICATE OF ANALYSIS TM18225130

Sample Description	Method Analyte Units LOD	ME-ICP41	ME-ICP41	ME-ICP41	ME-ICP41	ME-ICP41	ME-ICP41	Cu-OG46	
		Th	Ti	Tl	U	V	W	Zn	
		ppm	%	ppm	ppm	ppm	ppm	ppm	%
		20	0.01	10	10	1	10	2	0.001
Q296647		<20	0.01	<10	<10	16	<10	21	
Q296648		<20	0.01	<10	<10	11	<10	23	
Q296649		<20	<0.01	<10	<10	12	<10	39	
Q297351		<20	<0.01	<10	<10	6	<10	30	
Q297352		<20	<0.01	<10	<10	10	<10	38	
Q294969		<20	<0.01	<10	<10	21	<10	70	
Q294971		<20	<0.01	<10	<10	3	<10	18	
Q294972		<20	0.02	<10	<10	42	<10	47	
Q294973		<20	<0.01	<10	<10	8	<10	42	

***** See Appendix Page for comments regarding this certificate *****



ALS Canada Ltd.
2103 Dollarton Hwy
North Vancouver BC V7H 0A7
Phone: +1 (604) 984 0221 Fax: +1 (604) 984 0218
www.alsglobal.com/geochemistry

To: NEW FOUND GOLD CORP.
69 YONGE STREET
SUITE 1010
TORONTO ON M5E 1K3

Page: Appendix 1
Total # Appendix Pages: 1
Finalized Date: 27-SEP-2018
Account: PRCDVOXH

Project: LUCKY STRIKE

CERTIFICATE OF ANALYSIS TM18225130

CERTIFICATE COMMENTS

LABORATORY ADDRESSES

Applies to Method:	Processed at ALS Vancouver located at 2103 Dollarton Hwy, North Vancouver, BC, Canada.		
	Au-ICP21	Cu-OG46	ME-ICP41
			ME-OG46
Applies to Method:	Processed at ALS Timmins located at Unit 10 - 2090 Riverside Drive, Timmins, ON, Canada.		
	CRU-36	CRU-QC	LOG-21
	PUL-32	PUL-QC	SPL-21
			LOG-23
			WEI-21



ALS Canada Ltd.
 2103 Dollarton Hwy
 North Vancouver BC V7H 0A7
 Phone: +1 (604) 984 0221 Fax: +1 (604) 984 0218
 www.alsglobal.com/geochemistry

To: **NEW FOUND GOLD CORP.**
69 YONGE STREET
SUITE 1010
TORONTO ON M5E 1K3

Total # Pages: 5 (1 - C)
 Plus Appendix Pages
 Finalized Date: 27-SEP-2018
 Account: PRCDVOXH

QC CERTIFICATE TM18225130

Project: LUCKY STRIKE

This report is for 35 Rock samples submitted to our lab in Timmins, ON, Canada on 11-SEP-2018.

The following have access to data associated with this certificate:

PETER DIMMELL KEN RATTEE	GREG MATHESON MICHAEL REGULAR	PETER MCINTYRE
-----------------------------	----------------------------------	----------------

SAMPLE PREPARATION	
ALS CODE	DESCRIPTION
WEI-21	Received Sample Weight
LOG-21	Sample logging - ClientBarCode
CRU-QC	Crushing QC Test
PUL-QC	Pulverizing QC Test
CRU-36	Fine Crushing - 85% <2mm
SPL-21	Split sample - riffle splitter
PUL-32	Pulverize 1000g to 85% < 75 um
LOG-23	Pulp Login - Rcvd with Barcode

ANALYTICAL PROCEDURES		
ALS CODE	DESCRIPTION	INSTRUMENT
ME-ICP41	35 Element Aqua Regia ICP-AES	ICP-AES
ME-OG46	Ore Grade Elements - AquaRegia	ICP-AES
Cu-OG46	Ore Grade Cu - Aqua Regia	
Au-ICP21	Au 30g FA ICP-AES Finish	ICP-AES

This is the Final Report and supersedes any preliminary report with this certificate number. Results apply to samples as submitted. All pages of this report have been checked and approved for release.

***** See Appendix Page for comments regarding this certificate *****

Signature: 
 Colin Ramshaw, Vancouver Laboratory Manager



ALS Canada Ltd.
 2103 Dollarton Hwy
 North Vancouver BC V7H 0A7
 Phone: +1 (604) 984 0221 Fax: +1 (604) 984 0218
 www.alsglobal.com/geochemistry

To: NEW FOUND GOLD CORP.
 69 YONGE STREET
 SUITE 1010
 TORONTO ON M5E 1K3

Page: 2 - A
 Total # Pages: 5 (A - C)
 Plus Appendix Pages
 Finalized Date: 27-SEP-2018
 Account: PRCDVOXH

Project: LUCKY STRIKE

QC CERTIFICATE OF ANALYSIS TM18225130

Sample Description	Method Analyte Units LOD	Au-ICP21	ME-ICP41	ME-ICP41	ME-ICP41	ME-ICP41	ME-ICP41	ME-ICP41	ME-ICP41	ME-ICP41	ME-ICP41	ME-ICP41	ME-ICP41	ME-ICP41	ME-ICP41	
		Au ppm	Ag ppm	Al %	As ppm	B ppm	Ba ppm	Be ppm	Bi ppm	Ca %	Cd ppm	Co ppm	Cr ppm	Cu ppm	Fe %	Ga ppm
		0.001	0.2	0.01	2	10	10	0.5	2	0.01	0.5	1	1	1	0.01	10
STANDARDS																
AMIS0486		0.213														
Target Range - Lower Bound																
Upper Bound																
CDN-CM-34		3.6	2.39	101	<10	80	<0.5	3	1.48	0.9	42	173	5760	4.76	10	
Target Range - Lower Bound		3.1	2.14	93	<10	70	<0.5	<2	1.20	<0.5	36	164	5390	3.91	<10	
Upper Bound		4.3	2.64	118	30	140	1.4	8	1.49	2.0	46	202	6210	4.80	30	
CDN-GS-P6A		0.794														
CDN-GS-P6A		0.702														
Target Range - Lower Bound		0.693														
Upper Bound		0.783														
EMOG-17																
Target Range - Lower Bound																
Upper Bound																
G913-10		7.00														
G913-10		7.16														
Target Range - Lower Bound		6.66														
Upper Bound		7.52														
GPP-14		0.907														
GPP-14		0.920														
Target Range - Lower Bound		0.853														
Upper Bound		0.965														
JK-17		1.925														
Target Range - Lower Bound		1.875														
Upper Bound		2.12														
MRGeo08		4.3	2.47	35	<10	430	0.7	<2	1.01	2.1	19	89	609	3.53	10	
Target Range - Lower Bound		3.8	2.44	27	<10	370	<0.5	<2	1.00	1.1	16	81	586	3.22	<10	
Upper Bound		5.1	3.00	39	20	530	1.9	5	1.24	3.4	22	102	676	3.96	30	
OREAS 503c		0.698														
Target Range - Lower Bound		0.655														
Upper Bound		0.741														
OREAS 602		>100	0.57	656	<10	30	<0.5	58	0.51	24.5	9	33	4980	2.01	<10	
Target Range - Lower Bound		106.0	0.57	577	<10	<10	<0.5	50	0.46	22.2	7	26	4810	1.94	<10	
Upper Bound		100.0	0.71	709	20	50	1.3	66	0.59	28.2	12	34	5530	2.40	30	
OREAS 932																
Target Range - Lower Bound																
Upper Bound																
OREAS-133b																



ALS Canada Ltd.
 2103 Dollarton Hwy
 North Vancouver BC V7H 0A7
 Phone: +1 (604) 984 0221 Fax: +1 (604) 984 0218
 www.alsglobal.com/geochemistry

To: NEW FOUND GOLD CORP.
 69 YONGE STREET
 SUITE 1010
 TORONTO ON M5E 1K3

Page: 2 - B
 Total # Pages: 5 (A - C)
 Plus Appendix Pages
 Finalized Date: 27-SEP-2018
 Account: PRCDVOXH

Project: LUCKY STRIKE

QC CERTIFICATE OF ANALYSIS TM18225130

Sample Description	Method Analyte Units LOD	ME-ICP41 Hg ppm	ME-ICP41 K %	ME-ICP41 La ppm	ME-ICP41 Mg %	ME-ICP41 Mn ppm	ME-ICP41 Mo ppm	ME-ICP41 Na %	ME-ICP41 Ni ppm	ME-ICP41 P ppm	ME-ICP41 Pb ppm	ME-ICP41 S %	ME-ICP41 Sb ppm	ME-ICP41 Sc ppm	ME-ICP41 Sr ppm	ME-ICP41 Th ppm
STANDARDS																
AMIS0486																
Target Range - Lower Bound																
Upper Bound																
CDN-CM-34		<1	1.16	10	2.50	342	261	0.11	224	1880	19	2.99	4	9	106	<20
Target Range - Lower Bound		<1	1.06	<10	2.27	269	245	0.08	204	1050	18	2.70	<2	8	92	<20
Upper Bound		2	1.32	30	2.80	340	301	0.13	252	1310	28	3.32	9	13	115	40
CDN-GS-P6A																
CDN-GS-P6A																
Target Range - Lower Bound																
Upper Bound																
EMOG-17																
Target Range - Lower Bound																
Upper Bound																
G913-10																
G913-10																
Target Range - Lower Bound																
Upper Bound																
GPP-14																
GPP-14																
Target Range - Lower Bound																
Upper Bound																
JK-17																
Target Range - Lower Bound																
Upper Bound																
MRGeo08		<1	1.23	30	1.11	405	13	0.31	685	1020	1030	0.29	<2	7	76	20
Target Range - Lower Bound		<1	1.12	20	1.03	378	12	0.30	621	900	957	0.27	<2	5	71	<20
Upper Bound		2	1.40	60	1.29	473	17	0.39	761	1130	1175	0.35	8	10	89	60
OREAS 503c																
Target Range - Lower Bound																
Upper Bound																
OREAS 602		<1	0.08	10	0.09	203	4	0.03	60	230	812	1.98	61	1	45	<20
Target Range - Lower Bound		<1	0.07	<10	0.08	193	2	<0.01	54	210	768	1.81	51	<1	44	<20
Upper Bound		3	0.12	30	0.13	247	7	0.05	68	280	944	2.23	73	3	56	40
OREAS 932																
Target Range - Lower Bound																
Upper Bound																
OREAS-133b																



ALS Canada Ltd.
 2103 Dollarton Hwy
 North Vancouver BC V7H 0A7
 Phone: +1 (604) 984 0221 Fax: +1 (604) 984 0218
 www.alsglobal.com/geochemistry

To: NEW FOUND GOLD CORP.
 69 YONGE STREET
 SUITE 1010
 TORONTO ON M5E 1K3

Page: 2 - C
 Total # Pages: 5 (A - C)
 Plus Appendix Pages
 Finalized Date: 27-SEP-2018
 Account: PRCDVOXH

Project: LUCKY STRIKE

QC CERTIFICATE OF ANALYSIS TM18225130

Sample Description	Method Analyte Units LOD	ME-ICP41	ME-ICP41	ME-ICP41	ME-ICP41	ME-ICP41	ME-ICP41	Ag-OG46	Cu-OG46
		Ti %	Tl ppm	U ppm	V ppm	W ppm	Zn ppm	Ag ppm	Cu %
		0.01	10	10	1	10	2	1	0.001
STANDARDS									
AMIS0486									
Target Range - Lower Bound									
Upper Bound									
CDN-CM-34		0.19	<10	<10	119	10	176		
Target Range - Lower Bound		0.15	<10	<10	95	<10	159		
Upper Bound		0.21	20	20	118	30	199		
CDN-GS-P6A									
CDN-GS-P6A									
Target Range - Lower Bound									
Upper Bound									
EMOG-17								68	0.825
Target Range - Lower Bound								63	0.807
Upper Bound								69	0.867
G913-10									
G913-10									
Target Range - Lower Bound									
Upper Bound									
GPP-14									
GPP-14									
Target Range - Lower Bound									
Upper Bound									
JK-17									
Target Range - Lower Bound									
Upper Bound									
MRGeo08		0.38	<10	<10	99	<10	749		
Target Range - Lower Bound		0.33	<10	<10	90	<10	708		
Upper Bound		0.43	20	30	112	20	870		
OREAS 503c									
Target Range - Lower Bound									
Upper Bound									
OREAS 602		0.01	<10	<10	10	<10	3910		
Target Range - Lower Bound		<0.01	<10	<10	8	<10	3680		
Upper Bound		0.03	20	20	14	20	4500		
OREAS 932								24	6.11
Target Range - Lower Bound									5.90
Upper Bound									6.32
OREAS-133b								101	0.032



ALS Canada Ltd.
 2103 Dollarton Hwy
 North Vancouver BC V7H 0A7
 Phone: +1 (604) 984 0221 Fax: +1 (604) 984 0218
 www.alsglobal.com/geochemistry

To: NEW FOUND GOLD CORP.
 69 YONGE STREET
 SUITE 1010
 TORONTO ON M5E 1K3

Page: 3 - A
 Total # Pages: 5 (A - C)
 Plus Appendix Pages
 Finalized Date: 27-SEP-2018
 Account: PRCDVOXH

Project: LUCKY STRIKE

QC CERTIFICATE OF ANALYSIS TM18225130

Sample Description	Method Analyte Units LOD	Au-ICP21 Au ppm 0.001	ME-ICP41 Ag ppm 0.2	ME-ICP41 Al % 0.01	ME-ICP41 As ppm 2	ME-ICP41 B ppm 10	ME-ICP41 Ba ppm 10	ME-ICP41 Be ppm 0.5	ME-ICP41 Bi ppm 2	ME-ICP41 Ca % 0.01	ME-ICP41 Cd ppm 0.5	ME-ICP41 Co ppm 1	ME-ICP41 Cr ppm 1	ME-ICP41 Cu ppm 1	ME-ICP41 Fe % 0.01	ME-ICP41 Ga ppm 10
STANDARDS																
Target Range - Lower Bound																
Upper Bound																
OREAS-134b																
Target Range - Lower Bound																
Upper Bound																
PK2		4.87														
Target Range - Lower Bound		4.50														
Upper Bound		5.07														
WCM-PG135		0.633														
WCM-PG135		0.638														
Target Range - Lower Bound		0.607														
Upper Bound		0.687														
BLANKS																
BLANK		<0.001														
BLANK		<0.001														
BLANK		<0.001														
Target Range - Lower Bound		<0.001														
Upper Bound		0.002														
BLANK																
Target Range - Lower Bound																
Upper Bound																
BLANK			<0.2	<0.01	<2	<10	<10	<0.5	<2	<0.01	<0.5	<1	<1	<1	<0.01	<10
BLANK			<0.2	0.01	<2	<10	<10	<0.5	<2	0.01	<0.5	<1	<1	1	0.02	<10
Target Range - Lower Bound			<0.2	<0.01	<2	<10	<10	<0.5	<2	<0.01	<0.5	<1	<1	<1	<0.01	<10
Upper Bound			0.4	0.02	4	20	20	1.0	4	0.02	1.0	2	2	2	0.02	20



ALS Canada Ltd.
 2103 Dollarton Hwy
 North Vancouver BC V7H 0A7
 Phone: +1 (604) 984 0221 Fax: +1 (604) 984 0218
 www.alsglobal.com/geochemistry

To: NEW FOUND GOLD CORP.
 69 YONGE STREET
 SUITE 1010
 TORONTO ON M5E 1K3

Page: 3 - B
 Total # Pages: 5 (A - C)
 Plus Appendix Pages
 Finalized Date: 27-SEP-2018
 Account: PRCDVOXH

Project: LUCKY STRIKE

QC CERTIFICATE OF ANALYSIS TM18225130

Sample Description	Method	Analyte	Units	LOD	ME-ICP41	ME-ICP41	ME-ICP41	ME-ICP41	ME-ICP41	ME-ICP41	ME-ICP41	ME-ICP41	ME-ICP41	ME-ICP41	ME-ICP41					
					Hg	K	La	Mg	Mn	Mo	Na	Ni	P	Pb	S	Sb	Sc	Sr	Th	
					ppm	%	ppm	%	ppm	ppm	%	ppm	ppm	ppm	%	ppm	ppm	ppm	ppm	
					1	0.01	10	0.01	5	1	0.01	1	10	2	0.01	2	1	1	20	
STANDARDS																				
Target Range - Lower Bound																				
Upper Bound																				
OREAS-134b																				
Target Range - Lower Bound																				
Upper Bound																				
PK2																				
Target Range - Lower Bound																				
Upper Bound																				
WCM-PG135																				
WCM-PG135																				
Target Range - Lower Bound																				
Upper Bound																				
BLANKS																				
BLANK					<1	<0.01	<10	<0.01	<5	<1	<0.01	<1	<10	<2	<0.01	<2	<1	<1	<20	
BLANK					<1	<0.01	<10	<0.01	<5	<1	<0.01	1	20	<2	<0.01	<2	<1	<1	<20	
BLANK					<1	<0.01	<10	<0.01	<5	<1	<0.01	<1	<10	<2	<0.01	<2	<1	<1	<20	
Target Range - Lower Bound					<1	<0.01	<10	<0.01	<5	<1	<0.01	<1	<10	<2	<0.01	<2	<1	<1	<20	
Upper Bound					2	0.02	20	0.02	10	2	0.02	2	20	4	0.02	4	2	2	40	



ALS Canada Ltd.
 2103 Dollarton Hwy
 North Vancouver BC V7H 0A7
 Phone: +1 (604) 984 0221 Fax: +1 (604) 984 0218
 www.alsglobal.com/geochemistry

To: NEW FOUND GOLD CORP.
 69 YONGE STREET
 SUITE 1010
 TORONTO ON M5E 1K3

Page: 3 - C
 Total # Pages: 5 (A - C)
 Plus Appendix Pages
 Finalized Date: 27-SEP-2018
 Account: PRCDVOXH

Project: LUCKY STRIKE

QC CERTIFICATE OF ANALYSIS TM18225130

Sample Description	Method Analyte Units LOD	ME-ICP41 Ti %	ME-ICP41 Tl ppm	ME-ICP41 U ppm	ME-ICP41 V ppm	ME-ICP41 W ppm	ME-ICP41 Zn ppm	Ag-OG46 Ag ppm	Cu-OG46 Cu %
		0.01	10	10	1	10	2	1	0.001
STANDARDS									
Target Range - Lower Bound								99	0.031
Upper Bound								109	0.035
OREAS-134b								205	0.134
Target Range - Lower Bound								196	0.131
Upper Bound								212	0.142
PK2									
Target Range - Lower Bound									
Upper Bound									
WCM-PG135									
WCM-PG135									
Target Range - Lower Bound									
Upper Bound									
BLANKS									
BLANK								<1	<0.001
BLANK								<1	<0.001
BLANK								2	0.002
Target Range - Lower Bound									
Upper Bound									
BLANK		<0.01	<10	<10	<1	<10	<2		
BLANK		<0.01	<10	<10	1	<10	<2		
Target Range - Lower Bound		<0.01	<10	<10	<1	<10	<2		
Upper Bound		0.02	20	20	2	20	4		



ALS Canada Ltd.
 2103 Dollarton Hwy
 North Vancouver BC V7H 0A7
 Phone: +1 (604) 984 0221 Fax: +1 (604) 984 0218
 www.alsglobal.com/geochemistry

To: NEW FOUND GOLD CORP.
 69 YONGE STREET
 SUITE 1010
 TORONTO ON M5E 1K3

Page: 4 - A
 Total # Pages: 5 (A - C)
 Plus Appendix Pages
 Finalized Date: 27-SEP-2018
 Account: PRCDVOXH

Project: LUCKY STRIKE

QC CERTIFICATE OF ANALYSIS TM18225130

Sample Description	Method Analyte Units LOD	Au-ICP21	ME-ICP41	ME-ICP41	ME-ICP41	ME-ICP41	ME-ICP41	ME-ICP41	ME-ICP41	ME-ICP41	ME-ICP41	ME-ICP41	ME-ICP41	ME-ICP41	ME-ICP41	
		Au ppm	Ag ppm	Al %	As ppm	B ppm	Ba ppm	Be ppm	Bi ppm	Ca %	Cd ppm	Co ppm	Cr ppm	Cu ppm	Fe %	Ga ppm
		0.001	0.2	0.01	2	10	10	0.5	2	0.01	0.5	1	1	1	0.01	10
DUPLICATES																
ORIGINAL			<0.2	2.72	<2	<10	<10	<0.5	<2	2.41	<0.5	23	302	18	3.85	10
DUP			<0.2	2.72	<2	<10	<10	<0.5	<2	2.38	<0.5	23	300	26	3.87	10
Target Range - Lower Bound			<0.2	2.57	<2	<10	<10	<0.5	<2	2.27	<0.5	21	285	20	3.66	<10
Upper Bound			0.4	2.87	4	20	20	1.0	4	2.52	1.0	25	317	24	4.06	20
ORIGINAL		0.202														
DUP		0.197														
Target Range - Lower Bound		0.189														
Upper Bound		0.210														
ORIGINAL		0.079														
DUP		0.026														
Target Range - Lower Bound		0.049														
Upper Bound		0.056														
Q297355		0.001														
DUP		<0.001														
Target Range - Lower Bound		<0.001														
Upper Bound		0.002														
Q294970			<0.2	0.01	2	<10	20	<0.5	2	>25.0	<0.5	<1	<1	2	0.10	<10
DUP			<0.2	0.01	2	<10	20	<0.5	<2	>25.0	<0.5	<1	<1	2	0.10	<10
Target Range - Lower Bound			<0.2	<0.01	<2	<10	<10	<0.5	<2	23.7	<0.5	<1	<1	<1	0.09	<10
Upper Bound			0.4	0.02	4	20	30	1.0	4	>25.0	1.0	2	2	3	0.12	20
Q294977																
DUP																
Target Range - Lower Bound																
Upper Bound																
ORIGINAL		0.003														
DUP		0.003														
Target Range - Lower Bound		0.002														
Upper Bound		0.004														
ORIGINAL		2.68														
DUP		2.56														
Target Range - Lower Bound		2.49														
Upper Bound		2.75														



ALS Canada Ltd.
 2103 Dollarton Hwy
 North Vancouver BC V7H 0A7
 Phone: +1 (604) 984 0221 Fax: +1 (604) 984 0218
 www.alsglobal.com/geochemistry

To: **NEW FOUND GOLD CORP.**
69 YONGE STREET
SUITE 1010
TORONTO ON M5E 1K3

Page: 4 - B
 Total # Pages: 5 (A - C)
 Plus Appendix Pages
 Finalized Date: 27-SEP-2018
 Account: PRCDVOXH

Project: LUCKY STRIKE

QC CERTIFICATE OF ANALYSIS TM18225130

Sample Description	Method Analyte Units LOD	ME-ICP41 Hg ppm	ME-ICP41 K %	ME-ICP41 La ppm	ME-ICP41 Mg %	ME-ICP41 Mn ppm	ME-ICP41 Mo ppm	ME-ICP41 Na %	ME-ICP41 Ni ppm	ME-ICP41 P ppm	ME-ICP41 Pb ppm	ME-ICP41 S %	ME-ICP41 Sb ppm	ME-ICP41 Sc ppm	ME-ICP41 Sr ppm	ME-ICP41 Th ppm
		1	0.01	10	0.01	5	1	0.01	1	10	2	0.01	2	1	1	20
DUPLICATES																
ORIGINAL		<1	0.01	<10	3.04	358	<1	0.03	144	640	<2	0.81	<2	3	31	<20
DUP		<1	<0.01	10	3.03	354	<1	0.03	143	640	<2	0.82	<2	3	31	<20
Target Range - Lower Bound		<1	<0.01	<10	2.87	333	<1	0.02	135	600	<2	0.76	<2	2	28	<20
Upper Bound		2	0.02	20	3.20	379	2	0.04	152	680	4	0.87	4	4	34	40
ORIGINAL																
DUP																
Target Range - Lower Bound																
Upper Bound																
ORIGINAL																
DUP																
Target Range - Lower Bound																
Upper Bound																
Q297355																
DUP																
Target Range - Lower Bound																
Upper Bound																
Q294970		<1	0.01	<10	1.98	127	<1	0.01	1	100	<2	0.01	<2	<1	81	<20
DUP		<1	0.01	<10	1.94	126	<1	0.01	<1	110	<2	<0.01	3	<1	79	<20
Target Range - Lower Bound		<1	<0.01	<10	1.85	115	<1	<0.01	<1	90	<2	<0.01	<2	<1	75	<20
Upper Bound		2	0.02	20	2.07	138	2	0.02	2	120	4	0.02	4	2	85	40
Q294977																
DUP																
Target Range - Lower Bound																
Upper Bound																
ORIGINAL																
DUP																
Target Range - Lower Bound																
Upper Bound																
ORIGINAL																
DUP																
Target Range - Lower Bound																
Upper Bound																



ALS Canada Ltd.
 2103 Dollarton Hwy
 North Vancouver BC V7H 0A7
 Phone: +1 (604) 984 0221 Fax: +1 (604) 984 0218
 www.alsglobal.com/geochemistry

To: NEW FOUND GOLD CORP.
 69 YONGE STREET
 SUITE 1010
 TORONTO ON M5E 1K3

Page: 4 - C
 Total # Pages: 5 (A - C)
 Plus Appendix Pages
 Finalized Date: 27-SEP-2018
 Account: PRCDVOXH

Project: LUCKY STRIKE

QC CERTIFICATE OF ANALYSIS TM18225130

Sample Description	Method Analyte Units LOD	ME-ICP41 Ti %	ME-ICP41 Tl ppm	ME-ICP41 U ppm	ME-ICP41 V ppm	ME-ICP41 W ppm	ME-ICP41 Zn ppm	Ag-OG46 Ag ppm	Cu-OG46 Cu %
		0.01	10	10	1	10	2	1	0.001
		DUPLICATES							
ORIGINAL		0.11	<10	<10	60	<10	24		
DUP		0.11	<10	<10	59	<10	23		
Target Range - Lower Bound		0.09	<10	<10	56	<10	20		
Upper Bound		0.13	20	20	63	20	27		
ORIGINAL									
DUP									
Target Range - Lower Bound									
Upper Bound									
ORIGINAL									
DUP									
Target Range - Lower Bound									
Upper Bound									
Q297355									
DUP									
Target Range - Lower Bound									
Upper Bound									
Q294970		<0.01	<10	<10	1	<10	<2		
DUP		<0.01	<10	<10	<1	<10	<2		
Target Range - Lower Bound		<0.01	<10	<10	<1	<10	<2		
Upper Bound		0.02	20	20	2	20	4		
Q294977									1.710
DUP								3	1.750
Target Range - Lower Bound								2	1.685
Upper Bound								4	1.775
ORIGINAL									
DUP									
Target Range - Lower Bound									
Upper Bound									
ORIGINAL									
DUP									
Target Range - Lower Bound									
Upper Bound									



ALS Canada Ltd.
 2103 Dollarton Hwy
 North Vancouver BC V7H 0A7
 Phone: +1 (604) 984 0221 Fax: +1 (604) 984 0218
 www.alsglobal.com/geochemistry

To: NEW FOUND GOLD CORP.
 69 YONGE STREET
 SUITE 1010
 TORONTO ON M5E 1K3

Page: 5 - A
 Total # Pages: 5 (A - C)
 Plus Appendix Pages
 Finalized Date: 27-SEP-2018
 Account: PRCDVOXH

Project: LUCKY STRIKE

QC CERTIFICATE OF ANALYSIS TM18225130

Sample Description	Method Analyte Units LOD	Au-ICP21 Au ppm 0.001	ME-ICP41 Ag ppm 0.2	ME-ICP41 Al % 0.01	ME-ICP41 As ppm 2	ME-ICP41 B ppm 10	ME-ICP41 Ba ppm 10	ME-ICP41 Be ppm 0.5	ME-ICP41 Bi ppm 2	ME-ICP41 Ca % 0.01	ME-ICP41 Cd ppm 0.5	ME-ICP41 Co ppm 1	ME-ICP41 Cr ppm 1	ME-ICP41 Cu ppm 1	ME-ICP41 Fe % 0.01	ME-ICP41 Ga ppm 10
DUPLICATES																
ORIGINAL		<0.001														
DUP		<0.001														
Target Range - Lower Bound		<0.001														
Upper Bound		0.002														
ORIGINAL		<0.001														
DUP		<0.001														
Target Range - Lower Bound		<0.001														
Upper Bound		0.002														



ALS Canada Ltd.
 2103 Dollarton Hwy
 North Vancouver BC V7H 0A7
 Phone: +1 (604) 984 0221 Fax: +1 (604) 984 0218
 www.alsglobal.com/geochemistry

To: NEW FOUND GOLD CORP.
 69 YONGE STREET
 SUITE 1010
 TORONTO ON M5E 1K3

Page: 5 - B
 Total # Pages: 5 (A - C)
 Plus Appendix Pages
 Finalized Date: 27-SEP-2018
 Account: PRCDVOXH

Project: LUCKY STRIKE

QC CERTIFICATE OF ANALYSIS TM18225130

	Method	ME-ICP41	ME-ICP41	ME-ICP41	ME-ICP41	ME-ICP41	ME-ICP41	ME-ICP41	ME-ICP41	ME-ICP41	ME-ICP41	ME-ICP41	ME-ICP41	ME-ICP41	ME-ICP41	
Sample Description	Analyte Units LOD	Hg ppm	K %	La ppm	Mg %	Mn ppm	Mo ppm	Na %	Ni ppm	P ppm	Pb ppm	S %	Sb ppm	Sc ppm	Sr ppm	Th ppm
		1	0.01	10	0.01	5	1	0.01	1	10	2	0.01	2	1	1	20

ORIGINAL DUP Target Range - Lower Bound Upper Bound	DUPLICATES
--	-------------------

ORIGINAL DUP Target Range - Lower Bound Upper Bound	
--	--

--	--



ALS Canada Ltd.
 2103 Dollarton Hwy
 North Vancouver BC V7H 0A7
 Phone: +1 (604) 984 0221 Fax: +1 (604) 984 0218
 www.alsglobal.com/geochemistry

To: **NEW FOUND GOLD CORP.**
69 YONGE STREET
SUITE 1010
TORONTO ON M5E 1K3

Page: 5 - C
 Total # Pages: 5 (A - C)
 Plus Appendix Pages
 Finalized Date: 27-SEP-2018
 Account: PRCDVOXH

Project: LUCKY STRIKE

QC CERTIFICATE OF ANALYSIS TM18225130

Sample Description	Method Analyte Units LOD	ME-ICP41 Ti %	ME-ICP41 Tl ppm	ME-ICP41 U ppm	ME-ICP41 V ppm	ME-ICP41 W ppm	ME-ICP41 Zn ppm	Ag-OG46 Ag ppm	Cu-OG46 Cu %
		0.01	10	10	1	10	2	1	0.001
ORIGINAL DUP Target Range - Lower Bound Upper Bound	DUPLICATES								
ORIGINAL DUP Target Range - Lower Bound Upper Bound									



ALS Canada Ltd.
2103 Dollarton Hwy
North Vancouver BC V7H 0A7
Phone: +1 (604) 984 0221 Fax: +1 (604) 984 0218
www.alsglobal.com/geochemistry

To: NEW FOUND GOLD CORP.
69 YONGE STREET
SUITE 1010
TORONTO ON M5E 1K3

Page: Appendix 1
Total # Appendix Pages: 1
Finalized Date: 27-SEP-2018
Account: PRCDVOXH

Project: LUCKY STRIKE

QC CERTIFICATE OF ANALYSIS TM18225130

CERTIFICATE COMMENTS

LABORATORY ADDRESSES

Applies to Method:	Processed at ALS Vancouver located at 2103 Dollarton Hwy, North Vancouver, BC, Canada. Au-ICP21	Cu-OG46	ME-ICP41	ME-OG46
Applies to Method:	Processed at ALS Timmins located at Unit 10 - 2090 Riverside Drive, Timmins, ON, Canada. CRU-36	CRU-QC	LOG-21	LOG-23
	PUL-32	PUL-QC	SPL-21	WEI-21

APPENDIX F

GARMIN GPSmap 62s



General	
Physical dimensions	2.4" x 6.3" x 1.4" (6.1 x 16.0 x 3.6 cm)
Weight	7.9 oz (223 g) with batteries
Water rating	IPX7
Battery	2 AA batteries (not included); NiMH or Lithium recommended
Display type	transflective, 65-K color TFT
Display size	1.43" x 2.15" (3.6 x 5.5 cm); 2.6" diag (6.6 cm)
Display resolution	160 x 240 pixels
Battery life	20 hours
Memory/History	1.7 GB
High-sensitivity receiver	✓
Interface	high-speed USB and NMEA 0183 compatible

Maps & Memory	
Ability to add maps	✓
Basemap	✓
Storage and Power Capacity	microSD™ card (not included)
Waypoints/favorites/locations	2000
Routes	200
Track log	10,000 points, 200 saved tracks
Sensors	
Barometric altimeter	✓
Compass	Yes (tilt-compensated 3-axis)
Outdoor Recreation Features	
Area calculation	✓
Automatic routing (turn by turn routing on roads)	Yes (with optional mapping for detailed roads)
Geocaching-friendly	Yes (Paperless)
Custom maps compatible	✓
Hunt/fish calendar	✓
Sun and moon information	✓
Picture viewer	✓
Garmin Connect™	
Garmin Connect™ compatible (online community where you analyze, categorize and share data)	

- Specifications obtained from www.garmin.com

APPENDIX G: CERTIFICATE OF AUTHORSHIP

I, Ken Rattee, of the town of Kirkland Lake, Ontario hereby certify:

- 1) I am a graduate from the University of Toronto, Toronto, Ontario having received a Bachelor of Science degree, Geology Major in 1980.
- 2) I have worked for 38 years as a Geologist, predominantly in the north-eastern Ontario area, as a production, exploration and consultant geologist.
- 3) I am currently contracted as a Project Geologist for New Found Gold Corp. and was on site for the majority of the Summer 2018 Dellelce Property Prospecting Program.

Dated January 30, 2019

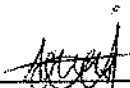


Ken Rattee, BSc

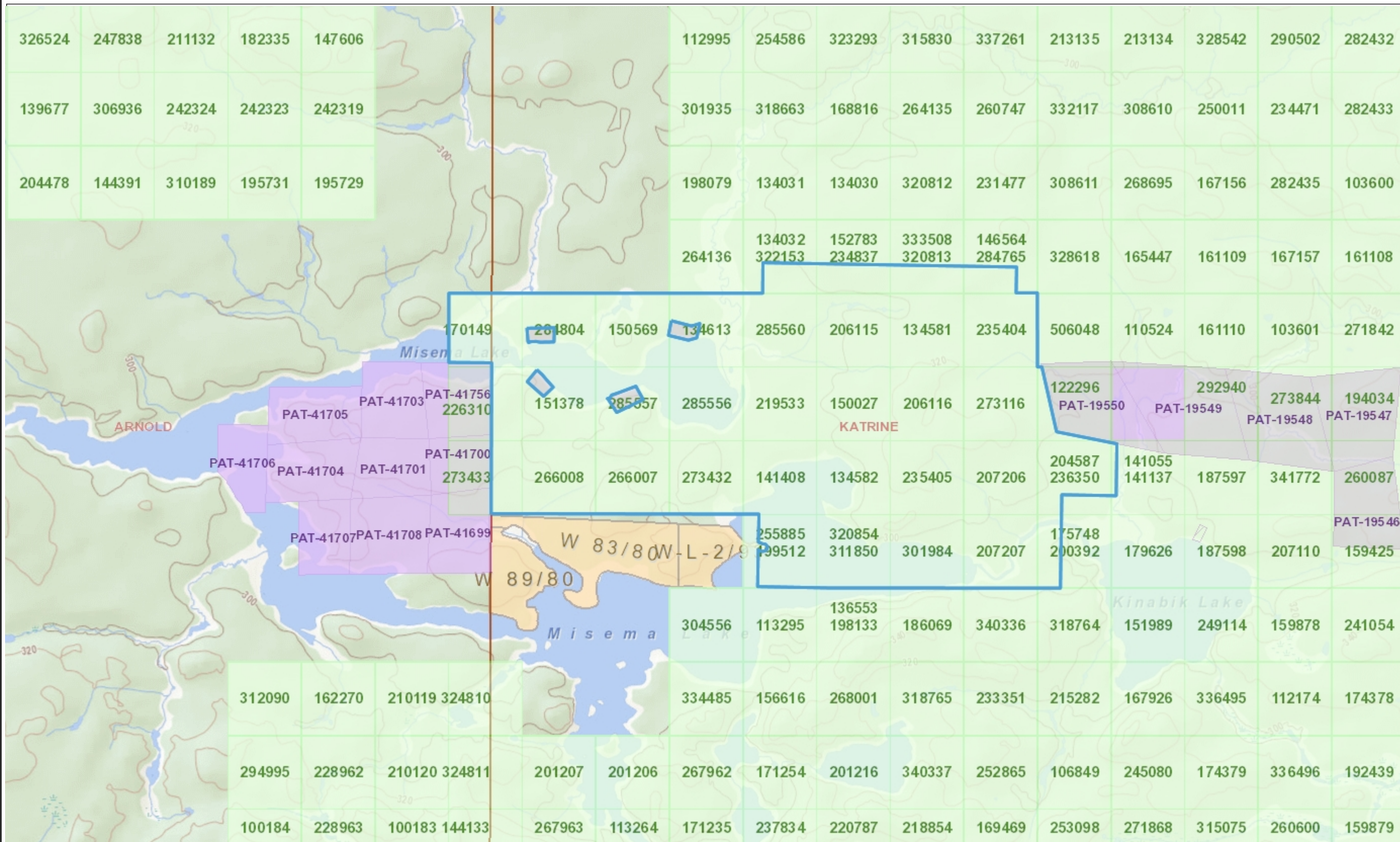
I, Pamela Iraheta Muniz, of the city of Toronto, Ontario hereby certify:

- 1) I am a graduate from Carleton University, Ottawa, Ontario having received a Bachelor of Science degree, Earth Sciences Major in June 2018.
- 2) I am currently in the process of registering as a Geoscientist in Training (GIT) under the Association of Professional Geoscientists of Ontario (APGO).
- 3) I am currently contracted as a Field Geologist for New Found Gold Corp. and was on site for the duration of the Summer 2018 Dellelce Property Prospecting Program.

Dated January 30, 2019



Pamela Iraheta Muniz, BSc



Legend

- Mining Claim
- Mining Lease**
 - Surface Rights Only
 - Mining Rights Only
 - Surface and Mining Rights
- Mining Licence of Occupation**
 - Surface Rights Only
 - Mining Rights Only
 - Surface and Mining Rights
- Mining Patent**
 - Surface Rights Only
 - Mining Rights Only
 - Surface and Mining Rights
- Mining Division
- MNDM Townships and Areas
- Non-Mining Land Tenure**
 - Patent, Surface Rights Only
 - Patent, Mining Rights Only
 - Patent, Surface and Mining Rights
 - Lease, Surface Rights Only
 - Lease, Mining Rights Only
 - Lease, Surface and Mining Rights
 - Water Power Lease Agreement
 - Licence of Occupation, Surface Rights Only
 - Licence of Occupation, Surface and Mining Rights
 - Order-in-Council
- Alienation**
 - Withdrawal
 - Notice
- Indian Reserve
- Federal Land Other
- CLUPA Protected Area - Far North



Projection: Web Mercator



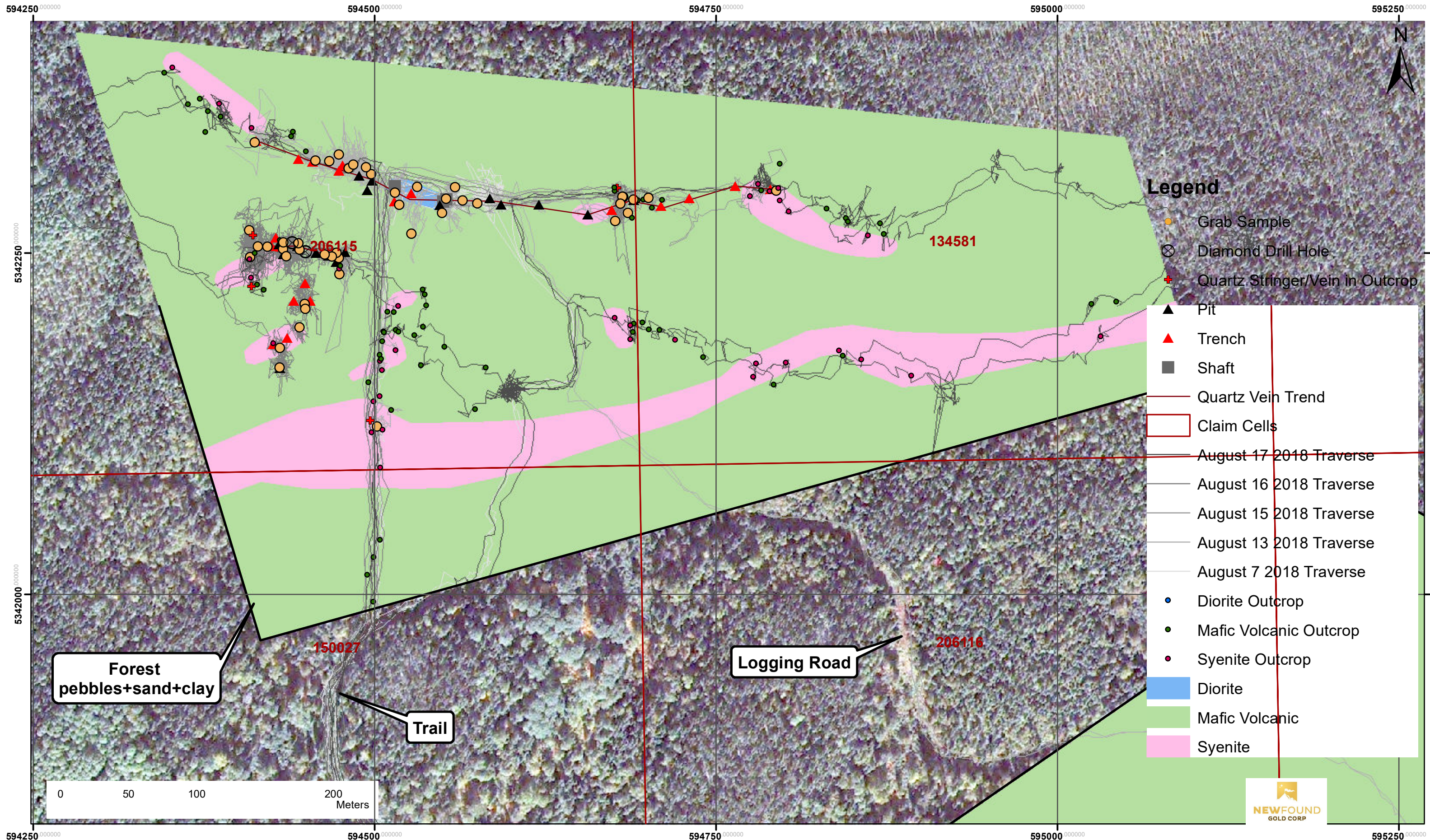
The Ontario Ministry of Northern Development and Mines shall not be liable in any way for the use of, or reliance upon, this map or any information on this map. This map should not be used for: navigation, a plan of survey, routes, nor locations.

Imagery Copyright Notices: Ontario Ministry of Natural Resources and Forestry; NASA Landsat Program; First Base Solutions Inc.; Aéro-Photo (1961) Inc.; DigitalGlobe Inc.; U.S. Geological Survey.



Dellelce-Vallillee Property - Norwood Area 1:2500

Summer 2018 Traverses



- ### Legend
- Grab Sample
 - ⊗ Diamond Drill Hole
 - ⊕ Quartz Stringer/Vein in Outcrop

- ▲ Pit
- ▲ Trench
- Shaft
- Quartz Vein Trend
- Claim Cells
- August 17 2018 Traverse
- August 16 2018 Traverse
- August 15 2018 Traverse
- August 13 2018 Traverse
- August 7 2018 Traverse
- Diorite Outcrop
- Mafic Volcanic Outcrop
- Syenite Outcrop
- Diorite
- Mafic Volcanic
- Syenite

Forest pebbles+sand+clay

Trail

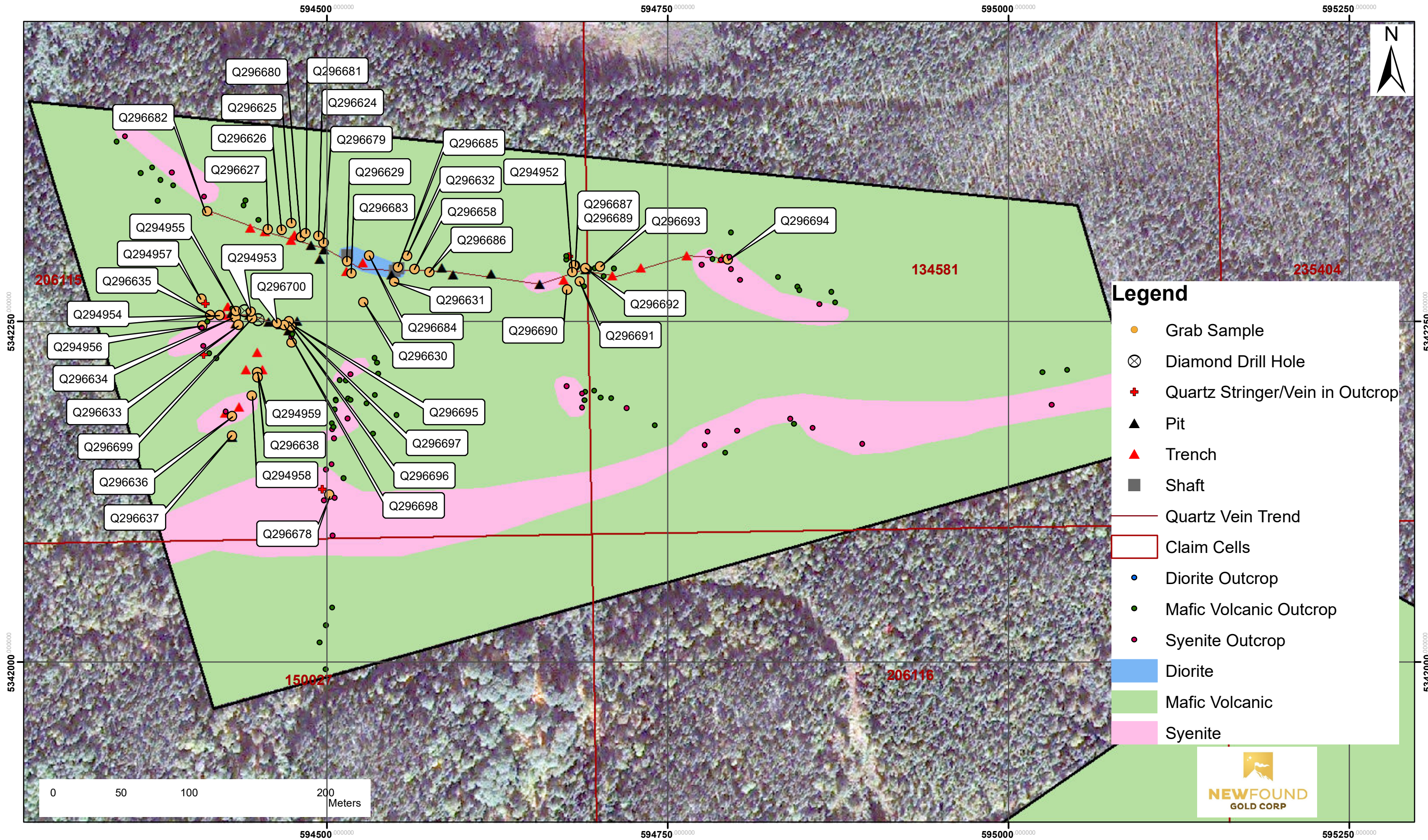
Logging Road

0 50 100 200 Meters



Dellelce-Vallillee Property - Norwood Area 1:2500

Summer 2018 Grab Samples



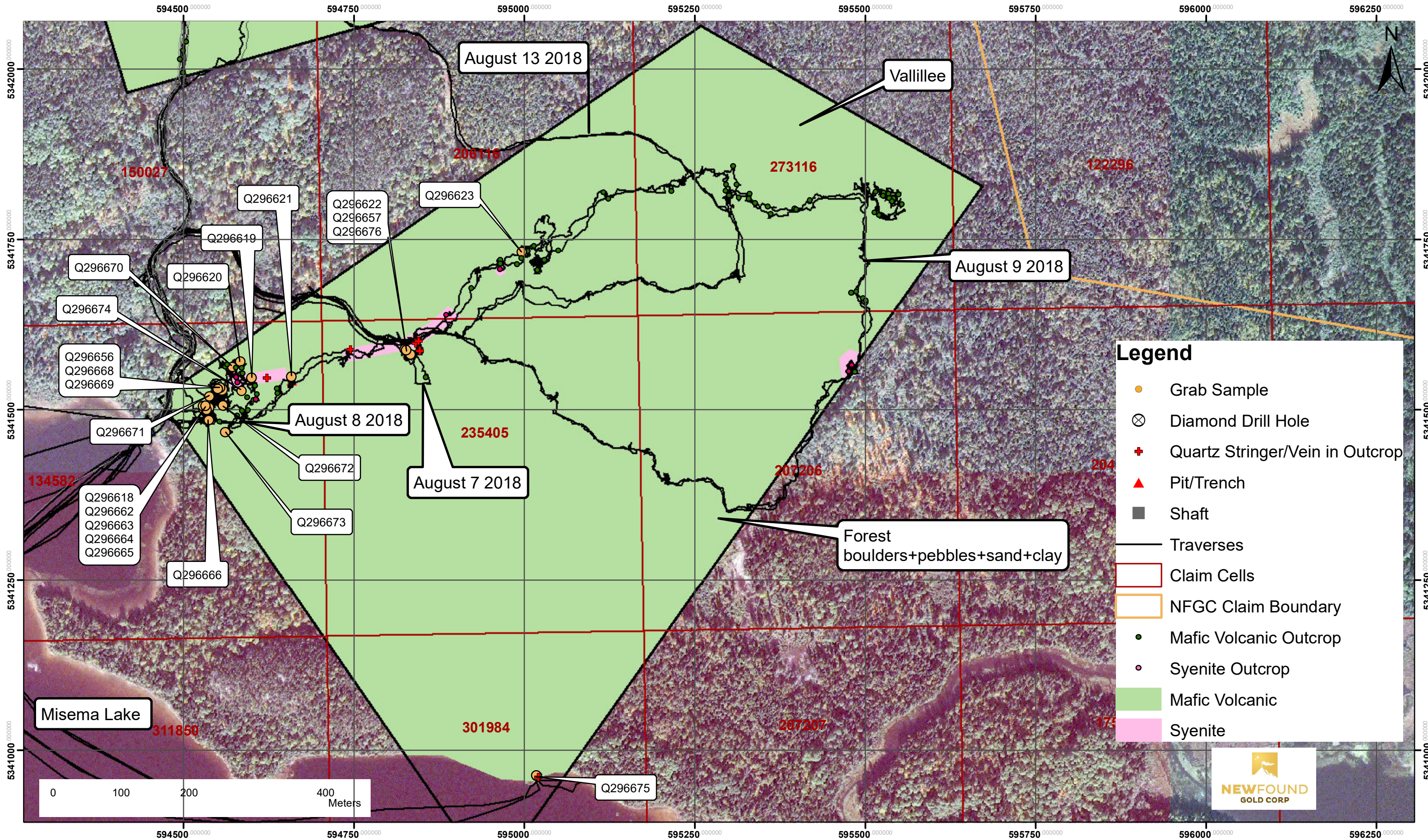
Legend

- Grab Sample
- ⊗ Diamond Drill Hole
- + Quartz Stringer/Vein in Outcrop
- ▲ Pit
- ▲ Trench
- Shaft
- Quartz Vein Trend
- Claim Cells
- Diorite Outcrop
- Mafic Volcanic Outcrop
- Syenite Outcrop
- Diorite
- Mafic Volcanic
- Syenite



Dellelce-Vallillee Property - Vallillee Area 1:5000

Summer 2018 Grab Samples and Traverses



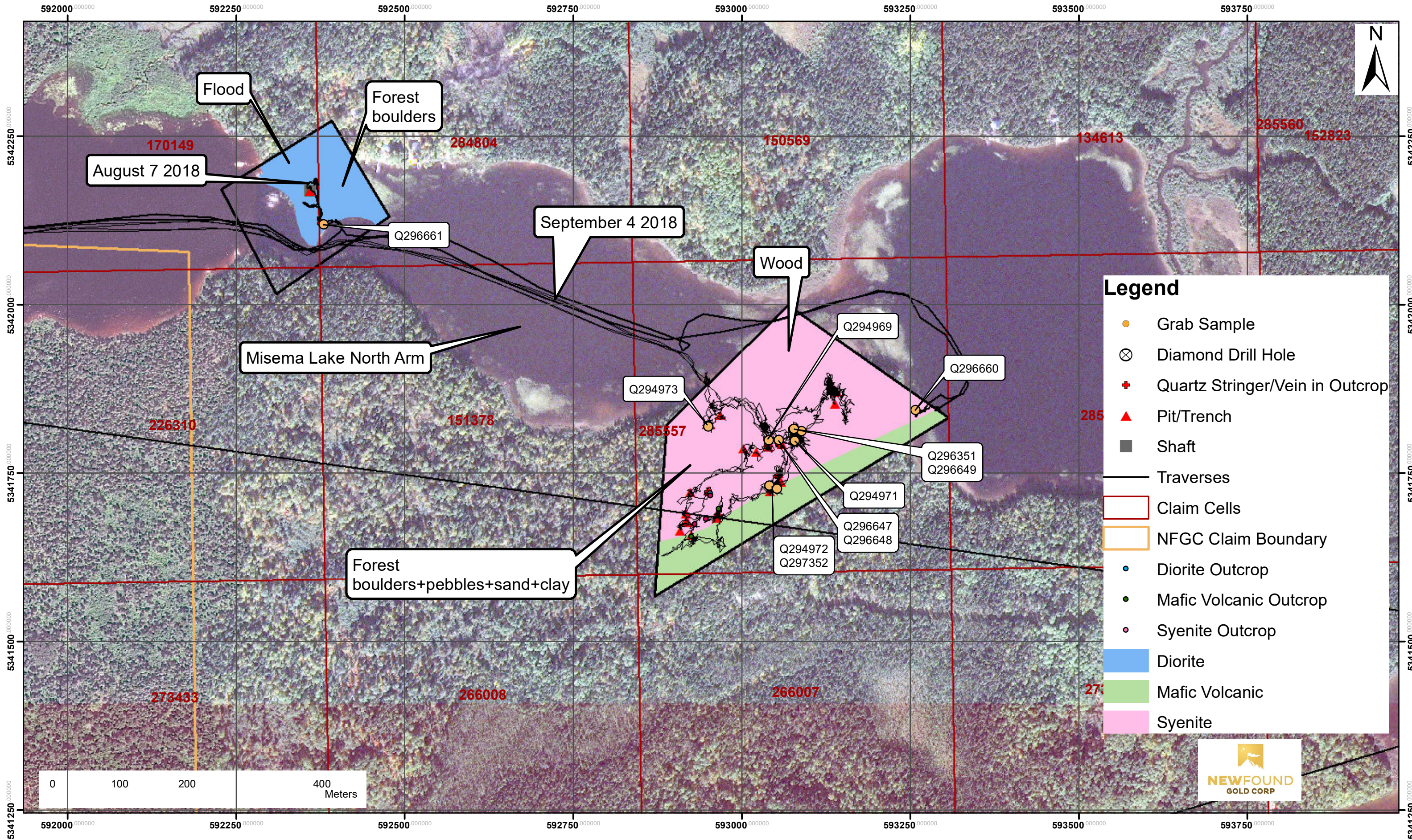
Legend

- Grab Sample
- ⊗ Diamond Drill Hole
- ⊕ Quartz Stringer/Vein in Outcrop
- ▲ Pit/Trench
- Shaft
- Traverses
- Claim Cells
- ▭ NFGC Claim Boundary
- Mafic Volcanic Outcrop
- Syenite Outcrop
- Mafic Volcanic
- Syenite



Dellelce-Vallillee Property - Flood and Wood Areas 1:5000

Summer 2018 Grab Samples and Traverses



August 7 2018

Flood

Forest boulders

September 4 2018

Wood

Misema Lake North Arm

Forest boulders+pebbles+sand+clay

- Legend**
- Grab Sample
 - ⊗ Diamond Drill Hole
 - ⊕ Quartz Stringer/Vein in Outcrop
 - ▲ Pit/Trench
 - Shaft
 - Traverses
 - Claim Cells
 - ▭ NFGC Claim Boundary
 - Diorite Outcrop
 - Mafic Volcanic Outcrop
 - Syenite Outcrop
 - Diorite
 - Mafic Volcanic
 - Syenite

