

We are committed to providing [accessible customer service](#).

If you need accessible formats or communications supports, please [contact us](#).

Nous tenons à améliorer [l'accessibilité des services à la clientèle](#).

Si vous avez besoin de formats accessibles ou d'aide à la communication, veuillez [nous contacter](#).



**CANADIAN EXPLORATION SERVICES LTD**

**Tiger Gold Exploration Corporation**

**Q2831– Bradette Property  
Grass Roots Prospecting Program**

**C Jason Ploeger, P.Geo.    December 1, 2019**

# TIGER GOLD EXPLORATION CORPORATION

## **Abstract**

Canadian Exploration Services Limited (CXS) was contracted to perform three days of prospecting over the Bradette Property. The traverses were designed to target possible outcrop features noted by previous winter geophysical surveys. To accomplish this, random traverses were performed over the areas identified to try and cover as much ground as possible.

**Tiger Gold Exploration Corporation**

**Q2831– Bradette Property  
Grass Roots Prospecting Program**

## TABLE OF CONTENTS

<b>1.</b>	<b>SUMMARY .....</b>	<b>4</b>
1.1	PROJECT NAME.....	4
1.2	CLIENT .....	4
1.3	SUMMARY .....	4
1.4	CO-ORDINATE SYSTEM .....	4
<b>2.</b>	<b>SURVEY LOCATION DETAILS .....</b>	<b>5</b>
2.1	LOCATION .....	5
2.2	ACCESS.....	5
2.3	MINING CLAIMS .....	5
2.4	PROPERTY HISTORY .....	7
2.5	GENERAL REGIONAL/LOCAL GEOLOGICAL SETTINGS.....	9
2.6	TARGET OF INTEREST .....	9
<b>3.</b>	<b>PLANNING.....</b>	<b>11</b>
3.1	EXPLORATION PERMIT/PLAN .....	11
3.2	PERSONNEL .....	11
3.3	TRAVERSE SPECIFICATIONS .....	11
<b>4.</b>	<b>RESULTS .....</b>	<b>12</b>
3.2	DAY 1 – 28 SEPTEMBER 2020.....	13
3.3	DAY 2 – 30 SEPTEMBER 2020.....	14
3.3	DAY 3 – 1 OCTOBER 2020 .....	15

## LIST OF APPENDICES

<b>APPENDIX A .....</b>	<b>STATEMENT OF QUALIFICATIONS</b>
<b>APPENDIX B .....</b>	<b>EQUIPMENT SPECIFICATIONS</b>
<b>APPENDIX C .....</b>	<b>REFERENCES</b>
<b>APPENDIX D .....</b>	<b>DIGITAL DATA</b>
<b>APPENDIX E .....</b>	<b>LIST OF MAPS (IN MAP POCKET)</b>

## LIST OF TABLES AND FIGURES

Figure 1: Location of the Bradette Property (Map data ©2019 Google).....	5
Figure 2: Operational Claim Map with Targets .....	10
Figure 3: Traverse conducted on September 28, 2020 .....	13
Figure 4: Traverse conducted on September 30, 2020 .....	14
Figure 5: Traverse conducted on 1 October 2020 .....	15
Figure 6: Traverse conducted on 1 October 2020 .....	16
Figure 7: Traverse conducted on 1 October 2020 .....	17

---

Figure 8: Traverse conducted on 1 October 2020 .....	18
Figure 9: Picture of Drill Hole Located .....	19
Figure 10: Picture of Drill Hole Located .....	20
Table 2: Mining Land Cells Information .....	6
Table 4: List of Features Located on October 1.....	19

---

## 1. SUMMARY

### 1.1 PROJECT NAME

This project is known as the **Bradette Property**.

### 1.2 CLIENT

Tiger Gold Exploration Corporation

103 Government Road.  
Kirkland Lake, Ontario  
P2N 1A9

### 1.3 SUMMARY

Canadian Exploration Services Limited (CXS) was contracted to perform three days of prospecting over the Bradette Property. The traverses were designed to target possible outcrop features noted by previous winter geophysical surveys. To accomplish this, random traverses were performed over the areas identified to try and cover as much ground as possible.

### 1.4 CO-ORDINATE SYSTEM

**Projection:** UTM zone 17N

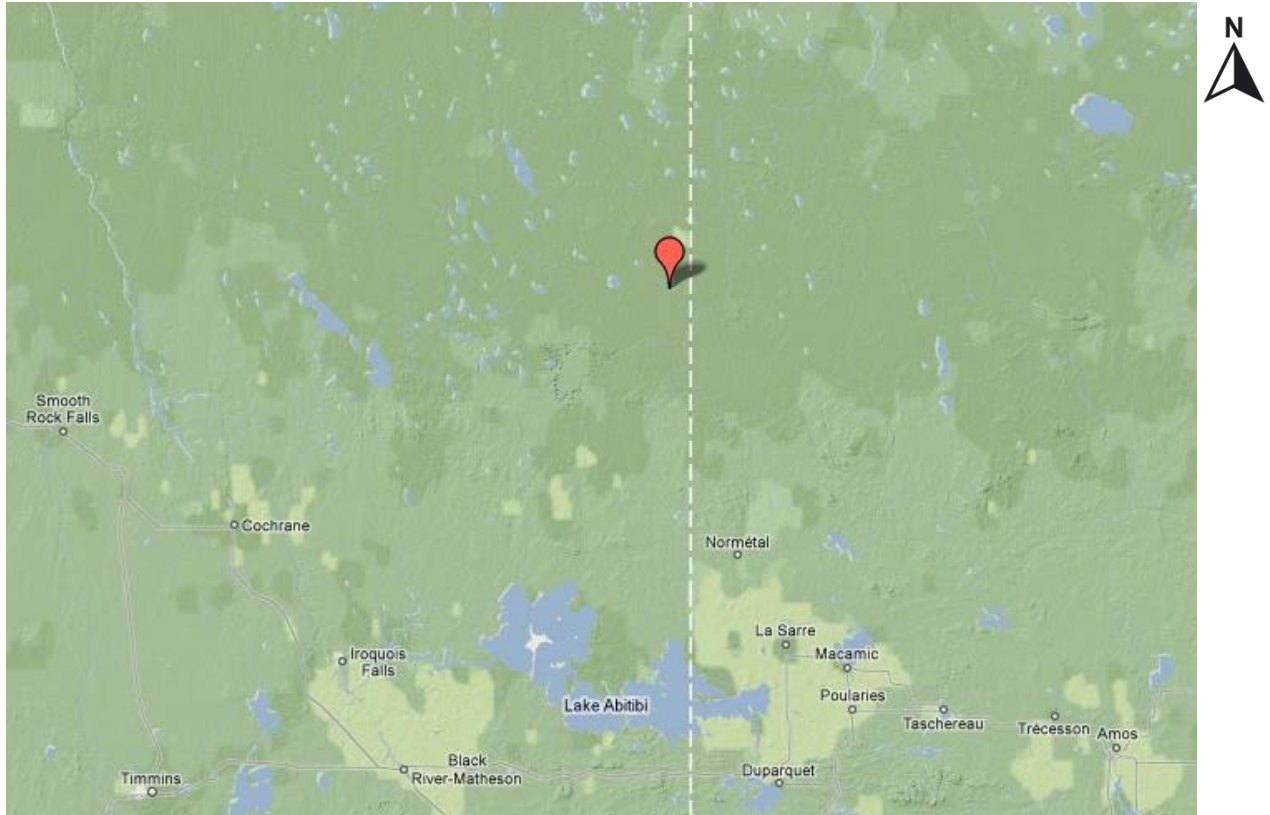
**Datum:** NAD83

**UTM Coordinates near center of area:** 604280 Easting and 5490684 Northing

## 2. SURVEY LOCATION DETAILS

### 2.1 LOCATION

The Bradette Property is located approximately 165km north of Larder Lake, Ontario.



***Figure 1: Location of the Bradette Property (Map data ©2020 Google)***

### 2.2 ACCESS

The Bradette property was accessed by helicopter from the Expedition Helicopter Base in Cochrane, Ontario.

### 2.3 MINING CLAIMS

The survey area covered a portion of mining claims located in Bradette Township, within the Larder Lake Mining Division. The property is owned by Tiger Gold Exploration Corporation. The details of these claims are in the table below.

<b>Cell Number</b>	<b>Cell Type</b>	<b>Ownership of Land</b>	<b>Township</b>
118489	Claim	Tiger Gold Exploration Corporation	Bradette
320490	Claim	Tiger Gold Exploration Corporation	Bradette
244353	Claim	Tiger Gold Exploration Corporation	Bradette
148538	Claim	Tiger Gold Exploration Corporation	Bradette
204626	Claim	Tiger Gold Exploration Corporation	Bradette
148539	Claim	Tiger Gold Exploration Corporation	Bradette
294517	Claim	Tiger Gold Exploration Corporation	Bradette
132433	Claim	Tiger Gold Exploration Corporation	Bradette
548664	Claim	Tiger Gold Exploration Corporation	Bradette
548696	Claim	Tiger Gold Exploration Corporation	Bradette
548689	Claim	Tiger Gold Exploration Corporation	Bradette
548692	Claim	Tiger Gold Exploration Corporation	Bradette
548685	Claim	Tiger Gold Exploration Corporation	Bradette
548677	Claim	Tiger Gold Exploration Corporation	Bradette
548697	Claim	Tiger Gold Exploration Corporation	Bradette
548688	Claim	Tiger Gold Exploration Corporation	Bradette
548693	Claim	Tiger Gold Exploration Corporation	Bradette
548665	Claim	Tiger Gold Exploration Corporation	Bradette
548690	Claim	Tiger Gold Exploration Corporation	Bradette

**Table 1: Mining Land Cells Information**



---

## 2.4 PROPERTY HISTORY

Significant historical exploration has been carried out over the years all over the survey area. The following list describes details of the previous geoscience work which was collected by the Mines and Minerals division and provided by OGSEarth (MNDM & OGSEarth, 2020).

- **1965: Onshore Petroleums Ltd (File 32E12SE0963)**  
***Diamond Drilling***  
Three diamond drill holes were reported for a total of 2101 feet.
- **1965: Onshore Petroleums Ltd (File 32E12SE0060)**  
***Ground EM and Magnetic Geophysical Surveys***  
Traverses using claim lines and pacing were performed. These lines were paced at 100-foot intervals.
- **1981: Noranda Exploration Co (File 32E12SE0050)**  
***Ground EM and Magnetic Geophysical Surveys***  
Picket lines 400' apart with station intervals of 100' were cut and chained. Magnetic readings were taken at each of the 100' stations. Approximately 2350 stations were read between the period of January 15 and February 9, 1981. 1913 in-phase and 1913 out-of-phase HEM readings were taken concurrently with magnetic readings.
- **1985: Noranda Exploration Co (File 32E12SE0050)**  
***Ground EM and Magnetic Geophysical Surveys***  
A total of 60.62 kilometres of grid and control lines were cut and chained between February and March 1984. An IP survey which consisted 1083 readings over 26.10 km of grid was performed from April 1 to April 15, 1984. A magnetic survey which consisted of 2098 readings over 51.55 km of grid was performed from February 23 to March 2, 1985.
- **1986: Dome Exploration (Canada) Limited (File 32E12SE9999)**  
***Airborne VLF Electromagnetic and Magnetic Geophysical Survey***  
A total of 403 km of survey was flown with a total field magnetometer and VLF system in May 1986 for Dome Exploration Limited. Total magnetic field contours indicated the presence of several narrow magnetic highs, characterising banded iron formations.
- **1987: Perrex Resources Inc (File 32E12NE0982)**  
***Airborne VLF Electromagnetic and Magnetic Geophysical Survey***  
On November 19, 1986 airborne geophysical surveys were carried out on the properties of Perrex Resources Ltd. under Bradette and Kingroy Townships, Ontario. Magnetic and VLF-EM data were collected by the airborne division of H. Ferderber Geophysics Ltd. A total of 1164 miles of data were collected. Magnetic highs associated with iron formations were observed.

- **1987: Noranda Exploration Co (File 32E12SE0065)**  
***Airborne Magnetic Geophysical Survey***  
From July 16, 1973 to July 22, 1973, an aeromagnetic survey was performed by Questor Surveys Limited for Noranda Exploration Company Limited. A total of 1485 line-miles was flown over the Burntbush River area of Northern Ontario. The responses due to iron formations dominated the magnetic data.
- **1989: Perrex Resources Inc (File 32E05NE0919)**  
***Airborne VLF Electromagnetic, Magnetic Geophysical Survey and Geological Interpretation***  
On March 21, 1989 an airborne geophysical survey was carried out on a property owned by Perrex Resources Ltd. in Bradette Township, Ontario. Magnetic and VLF-EM data were collected by the airborne division of H. Ferderber Geophysics Ltd. and a total of 94.35 miles of data were collected. The VLF-electromagnetic survey outlined a conductive zone which may be a shear zone or a metallic deposit containing gold.
- **1990: Teck Corporation Ltd (Files 32E12SE0011 and 32E12SE0013)**  
***Diamond Drilling***  
Two diamond drill holes were reported for a total of 327 m.
- **1990: Perron Gold Corp (Files 32E12SE0012 and 32E12SE0016)**  
***Airborne VLF Electromagnetic, Geological Mapping and Interpretation***  
A geophysical grid, at a 400-foot line spacing, was established by Perron over the whole Bradette property. A geological survey was performed in the summer of 1989. A VLF-EM survey using a Geonics EM16 Unit, was conducted in January 1990. The survey was performed only on the eastern half of the grid.
- **2011-2019: Tiger Gold Exploration Corporation. (Files 20000007298 and 20000006596, 20000017025, 20000014591, 20000014590)**  
***Magnetic and VLF Geophysical Surveys***  
In 2011 through 2019, Tiger Gold contracted CXS to perform a series of no-grid magnetic and VLF EM surveys. These surveys were performed along north-south traverse lines spaced at 100 m. Magnetic and VLF EM samples were taken every 25 m along these traverses.
- **2014-2015: Tiger Gold Exploration Corporation. (Files 20000008773 and 20000009176)**  
***Re-cutting of Claim Lines***  
In 2014 and 2015, Tiger Gold contracted CXS to locate and re-establish the claim boundaries for the Bradette Property.

---

## **2.5 GENERAL REGIONAL/LOCAL GEOLOGICAL SETTINGS**

The property is located along the Casa Berardi Deformation Zone in the Abitibi Greenstone Belt of the Superior Province of the Canadian Shield. The Abitibi Greenstone Belt extends for nearly 350 miles in a west-east direction from Timmins to Chibougamau and is host to a variety of precious and base metal deposits.

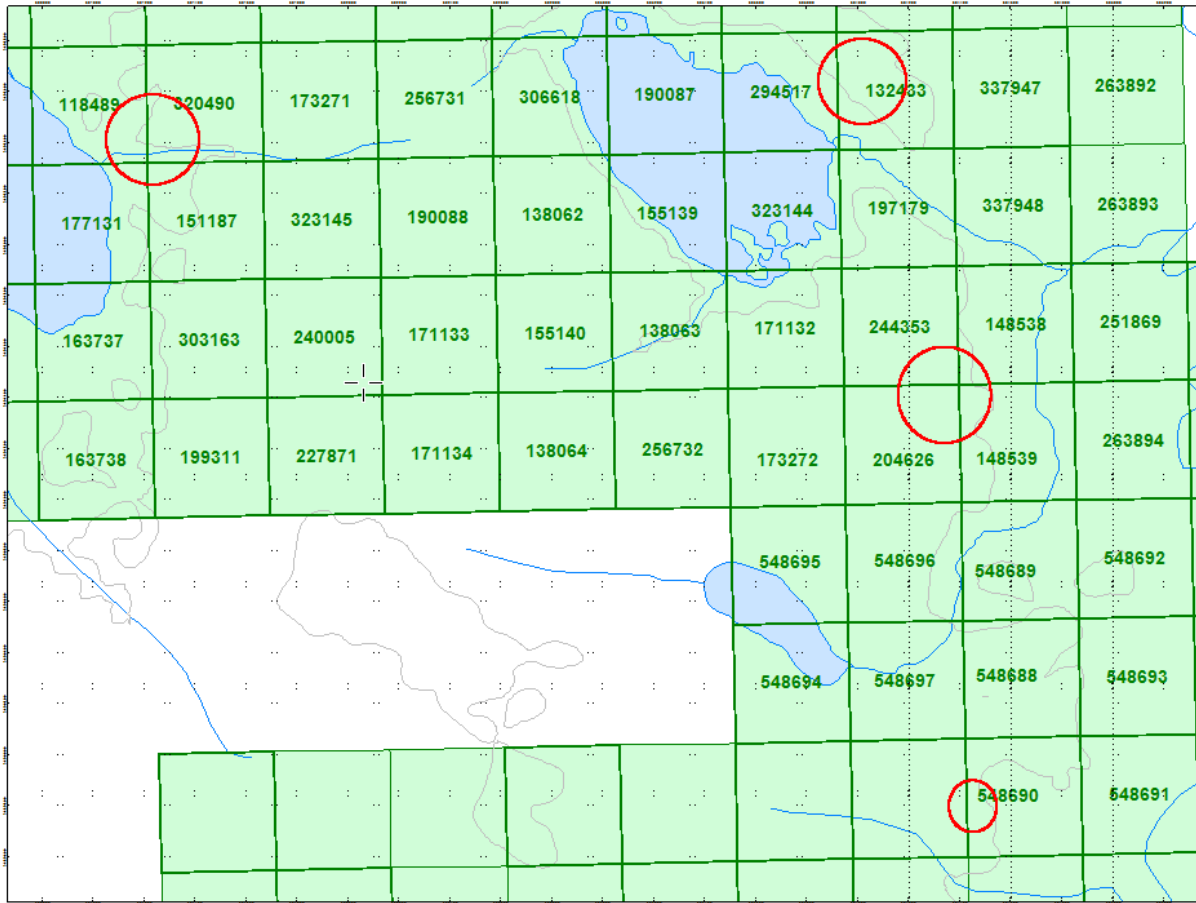
The Northern Abitibi is an Archean supracrustal complex composed of moderate to highly deformed rocks of meta-volcanic rocks and meta-sedimentary assemblies, typically of the greenstone facies. The meta-volcanic rocks observed are predominantly massive or pillowed flows with minor feldspar interflow. The meta-sedimentary rocks typically occur as interbedded greywacke, siltstone, argillite and conglomerates. Banded iron formations are interbedded between volcanic flows. The metamorphic rocks are bounded by granitic rocks to the north, west, and south and are intruded by several large granitic batholiths. There are numerous late Precambrian diabase dykes which cut the rocks in the belt. The rocks generally strike east-west, have vertical dips and are highly folded, faulted and deformed. There is a poor geological understanding of the Abitibi Greenstone Belt because of both, the wide spread scattering of outcrops and the complex structure of the belt.

### **Property Geology:**

Geological mapping of the property is difficult due to the lack of outcrops. Therefore, geological interpretation is mainly based on drill cores. Volcanic rocks vary from mafic to intermediate and massive to pillow metavolcanic rocks with minor amounts of intermediate to felsic metavolcanic rocks. The volcanic rocks are typically intruded by quartz-feldspar porphyry dykes. The metasedimentary rocks are mainly biotite-rich meta-sediments, greywacke, conglomerate and magnetite-bearing iron formation. There are several mafic to intermediate dykes that intrude both the volcanic and sedimentary rocks. Late diabase dykes intrude all rock types mentioned above.

## **2.6 TARGET OF INTEREST**

The targeting for the prospecting traverses was to investigate areas identified by the previous winter geophysics programs as probable outcrops. Any elevated regions identified from the helicopter were also to be traverses to determine whether outcrop exists. Two additional target areas were identified around historic drilling.



**Figure 2: Operational Claim Map with Targets**

---

### **3. PLANNING**

#### **3.1 EXPLORATION PERMIT/PLAN**

The prospecting work reported on here was surficial and did not require any plans or permits.

#### **3.2 PERSONNEL**

Bruce Lavalley and Claudia Moraga, both of Dobie, Ontario, represented the prospecting crew.

#### **3.3 TRAVERSE SPECIFICATIONS**

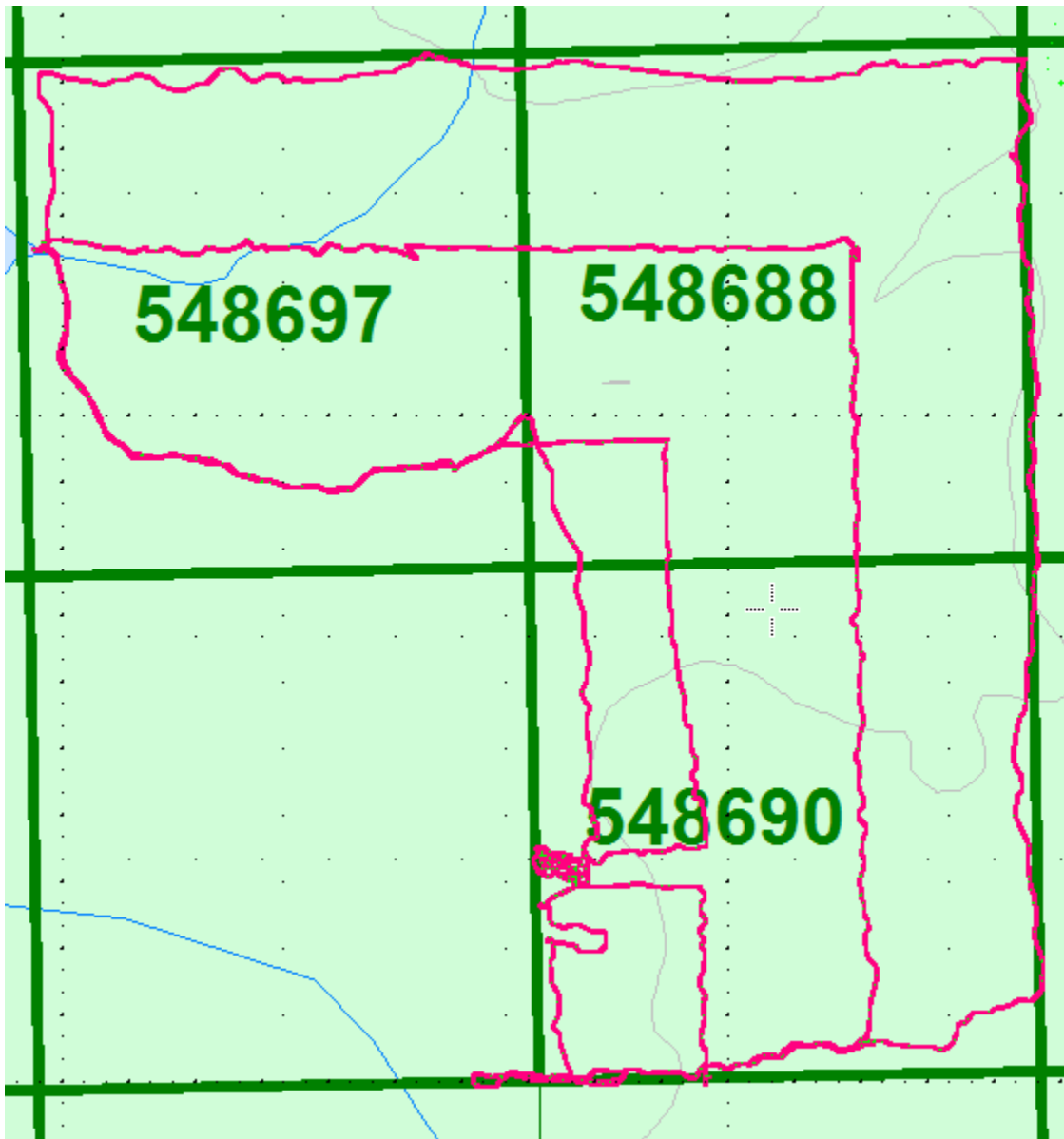
The property boundary along with specific target areas were identified and uploaded to a GPS. This boundary acted as a constraint for the prospecting traverse.

---

## 4. RESULTS

No outcrops were located during the prospecting traverses. The areas that were observed and interpreted as outcrops during the winter geophysics programs were visited and determined to be sharp esker ridges.

The helicopter was also used to locate and identify any significant elevations in the terrain, in hopes that they may be rock outcrops. The prospecting crew was then dropped off at these areas by the helicopter and traversed them on foot. All were determined to be eskers with no outcrop present.

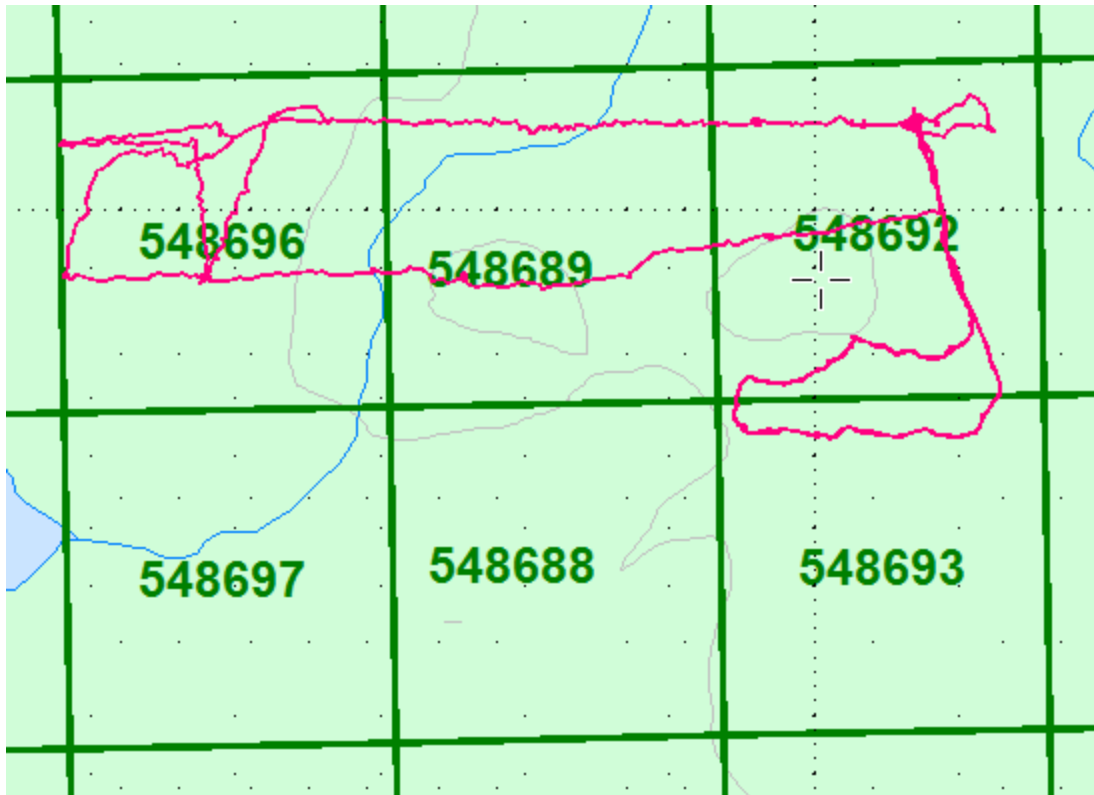
**3.2 DAY 1 – 28 SEPTEMBER 2020**

**Figure 3: Traverse conducted on September 28, 2020**

This area represented the primary target, it was reported from previous winter programs as a small hill or ridge with rock exposure. This region was traversed and the rock exposure was noted and confirmed to be a boulder within the steep side of an esker. Other traverses were performed across the esker to determine if bedrock existed.

No outcrops or features were observed.

### 3.3 DAY 2 – 30 SEPTEMBER 2020

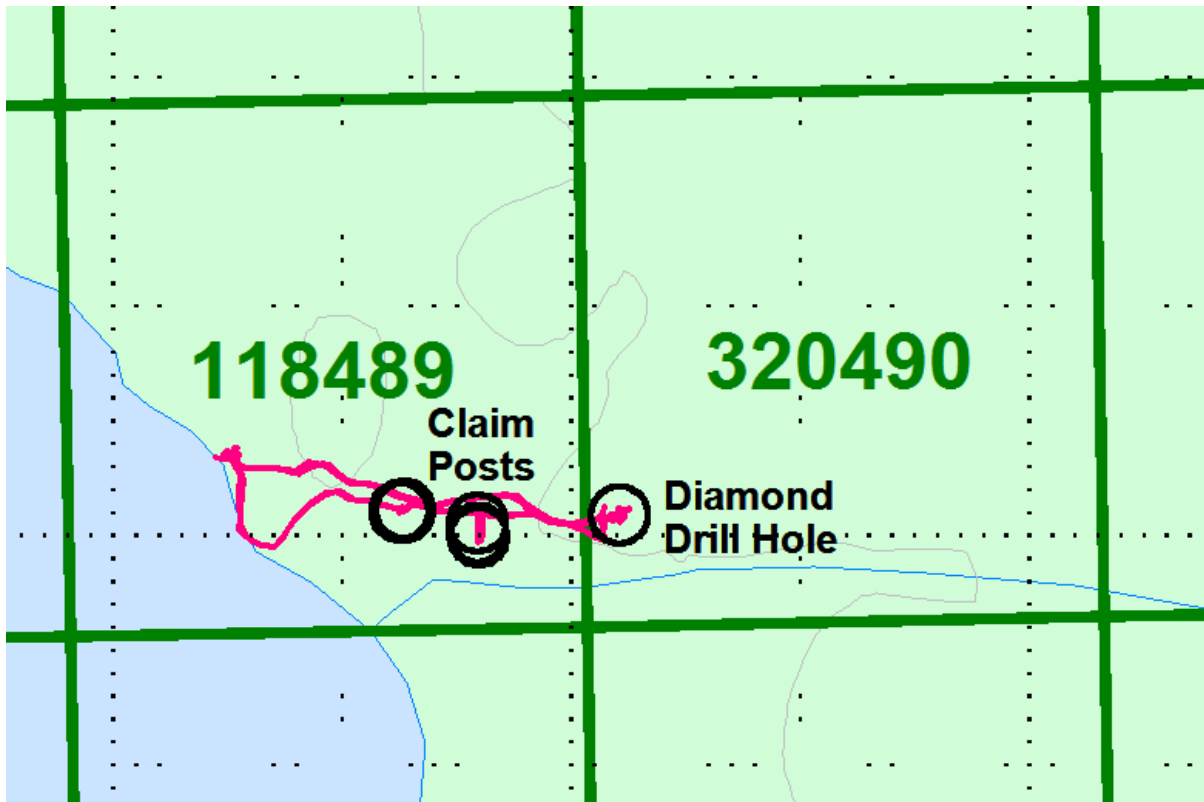


**Figure 4: Traverse conducted on September 30, 2020**

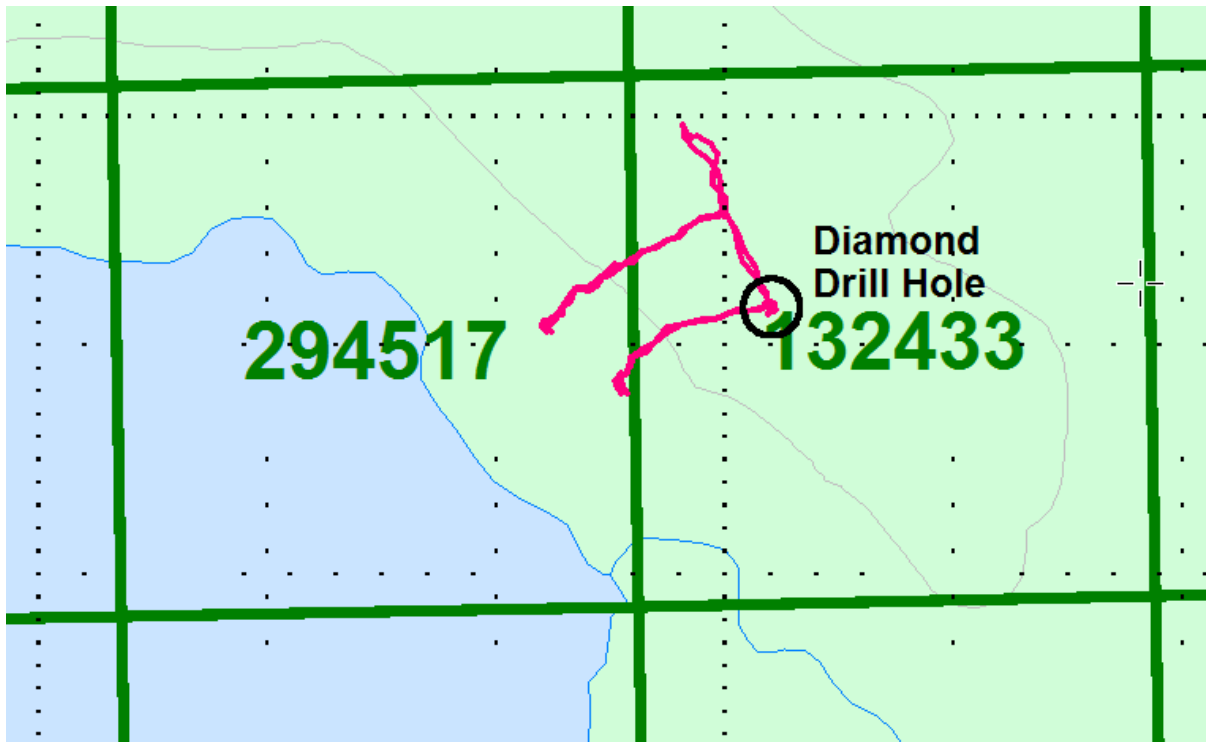
The crew continued to traverse the elevated area along the strike of the primary target. No outcrop or features were observed.



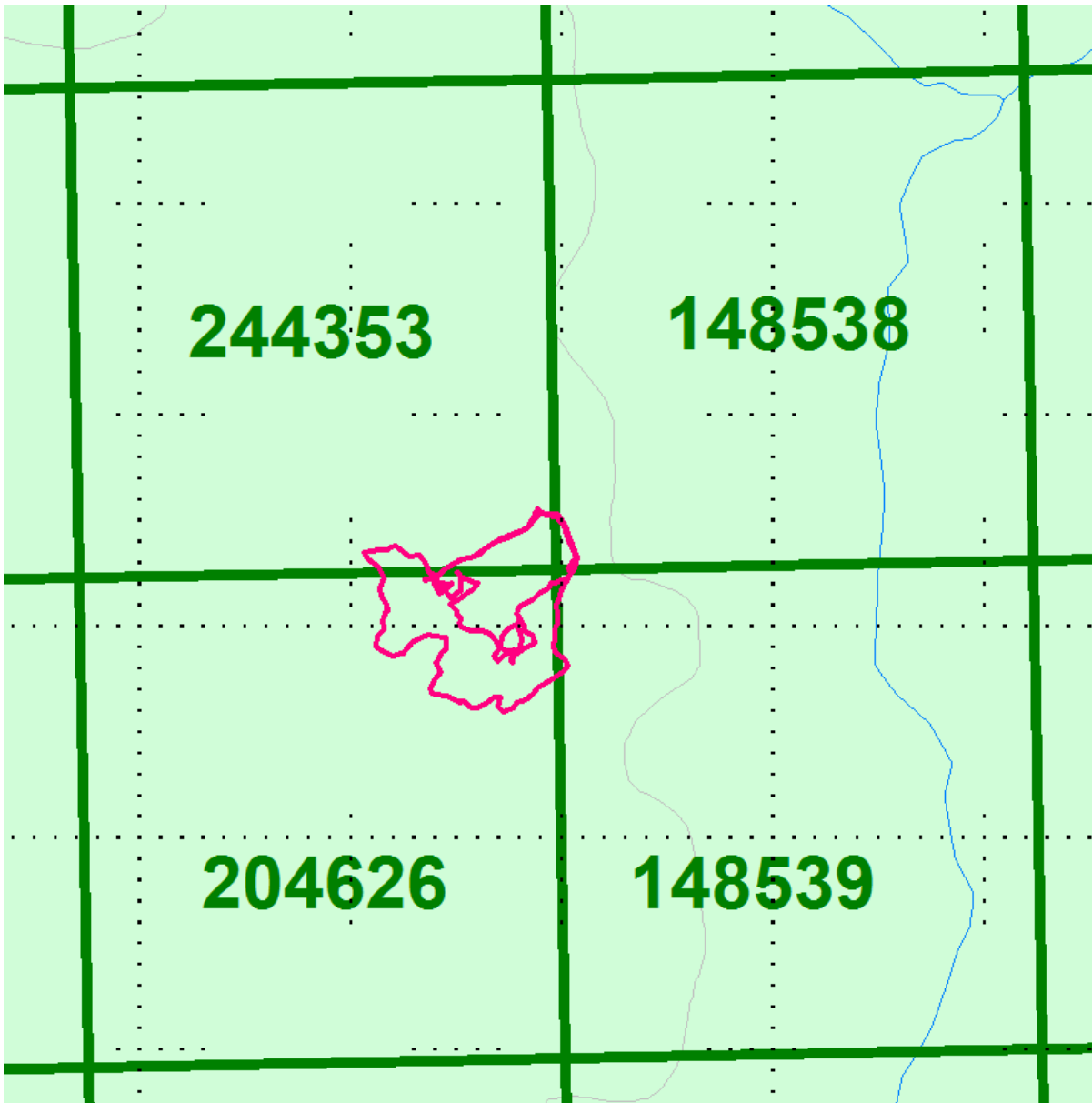
**3.3 DAY 3 – 1 OCTOBER 2020**



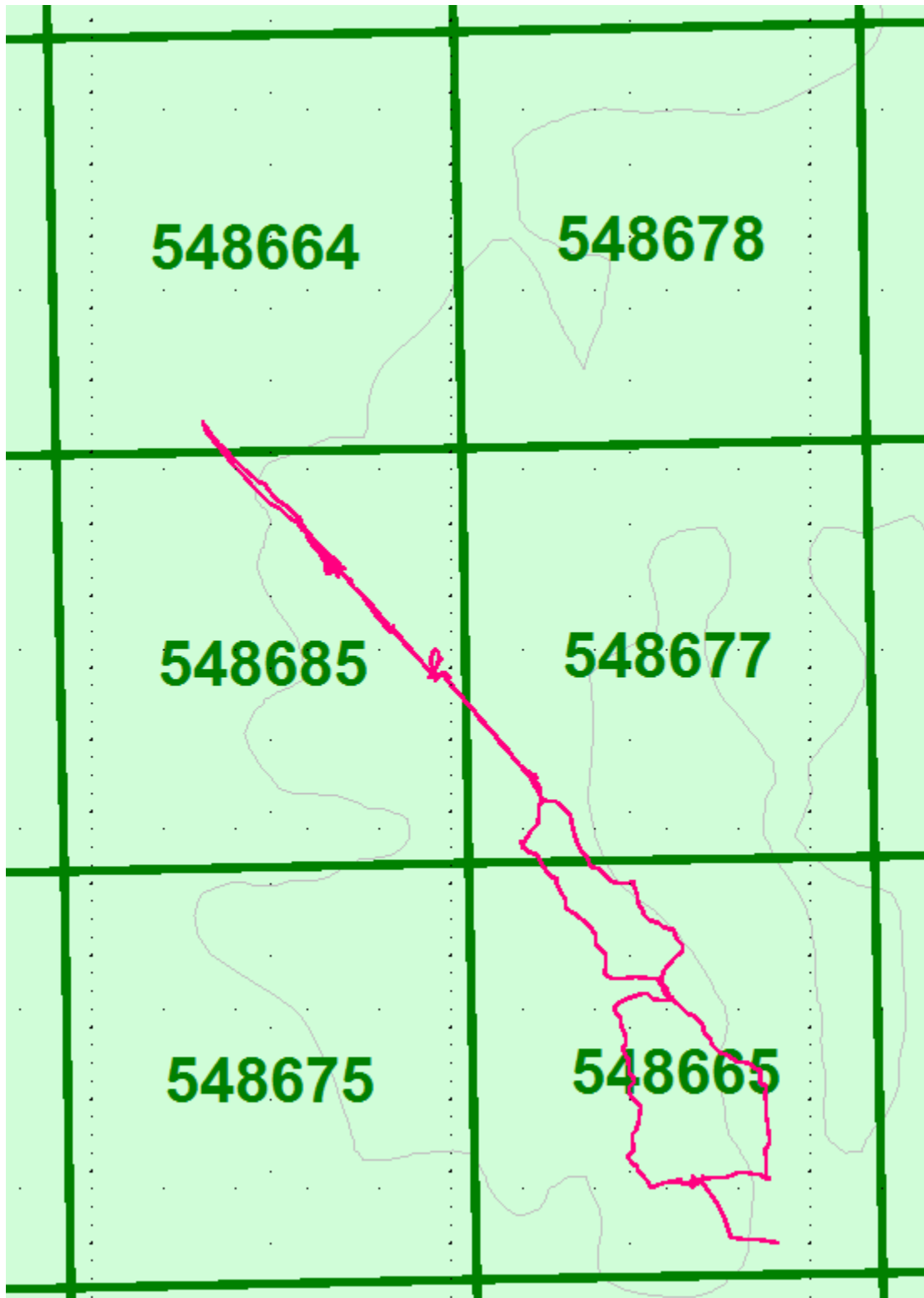
**Figure 5: Traverse conducted on 1 October 2020**



**Figure 6: Traverse conducted on 1 October 2020**



**Figure 7: Traverse conducted on 1 October 2020**



**Figure 8: Traverse conducted on 1 October 2020**

Feature Located	Easting	Northing
Diamond Drill Hole	604041	5492633
Diamond Drill Hole	601242	5492418
Claim Posts	601050	5492421
Claim Posts	601118	5492411

**Table 2: List of Features Located on October 1**



**Figure 9: Picture of Drill Hole Located**





**Figure 10: Picture of Drill Hole Located**

The area around target 2 was traversed to determine if outcrop existed. Again, this was determined to be the steep edge of an esker.

A traverse was also performed along an elevated area on the east side of the property. This was again determined to be an esker and no outcrop was observed.

Two drill casings were located and GPS coordinates taken.

## APPENDIX A

### STATEMENT OF QUALIFICATIONS

I, C. Jason Ploeger, hereby declare that:

1. I am a professional geophysicist with residence in Larder Lake, Ontario and am presently employed as a Geophysicist and Geophysical Manager of Canadian Exploration Services Ltd. of Larder Lake, Ontario.
2. I am a Practising Member of the Association of Professional Geoscientists, with membership number 2172.
3. I graduated with a Bachelor of Science degree in geophysics from the University of Western Ontario, in London Ontario, in 1999.
4. I have practiced my profession continuously since graduation in Africa, Bulgaria, Canada, Mexico and Mongolia.
5. I am a member of the Ontario Prospectors Association, a Director of the Northern Prospectors Association and a member of the Society of Exploration Geophysicists.
6. I do not have nor expect an interest in the properties and securities of **Tiger Gold Exploration Corporation.**
7. I am responsible for the final processing and validation of the survey results and the compilation of the presentation of this report. The statements made in this report represent my professional opinion based on my consideration of the information available to me at the time of writing this report.



C. Jason Ploeger, P.Geo., B.Sc.  
Geophysical Manager  
Canadian Exploration Services Ltd.

Larder Lake, ON  
December 1, 2019

---

## APPENDIX C

### REFERENCES

- Google. (2019). *Location of the Bradette Property*. Retrieved April 24, 2019 from <https://www.google.ca/maps/@49.6815989,-80.5503097,8.37z>
- CNES/Airbus & DigitalGlobe. (2020). *Fraser filter of the VLF EM frequency NML*. Google Earth. Imagery date July 11, 2013. Accessed on April 29, 2019.
- CNES/Airbus & DigitalGlobe. (2020). *Magnetic plan over the Bradette Property on Google Earth*. Google Earth. Imagery date July 11, 2013. Accessed on April 29, 2019.
- CNES/Airbus & DigitalGlobe. (2020). *Survey design overlaid on Google Earth*. Google Earth. Imagery date July 11, 2013. Accessed on April 29, 2019.
- MNDM & OGSEarth. (2020). *OGSEarth*. Ontario Ministry of Northern Development and Mines.



---

## APPENDIX D

### DIGITAL DATA

The digital data contains

- 1) PDF copy of this report
- 2) PDF copy of the maps
- 3) Pictures

---

**APPENDIX E**

**LIST OF MAPS (IN MAP POCKET)**

Grid Sketch (1:5000)

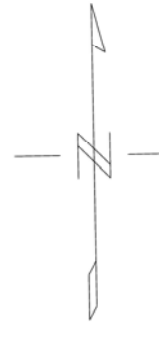
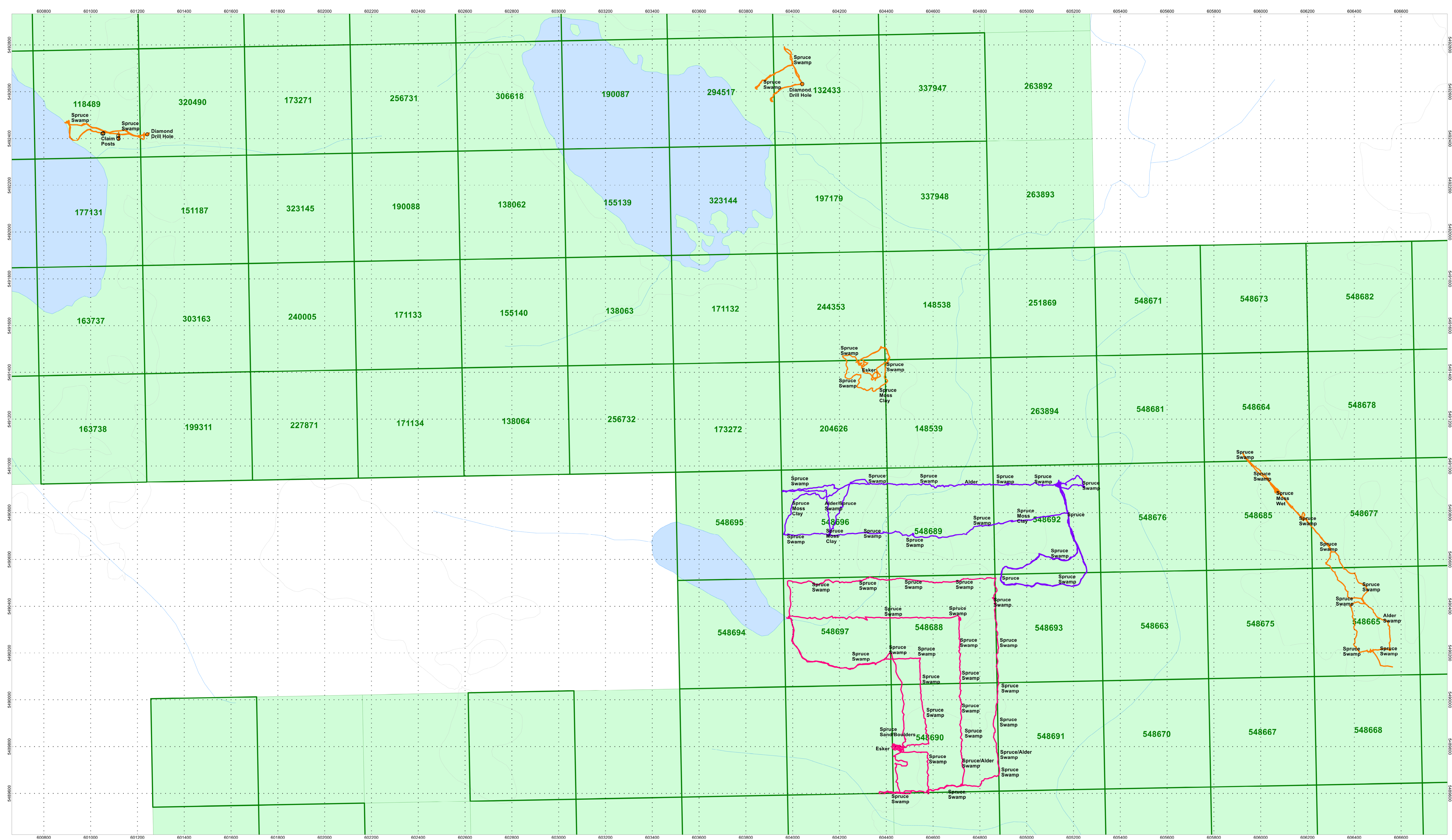
- 1) Q2831-TigerGold-Bradette-Prospecting-Traversal

**TOTAL MAPS = 1**

877.504.2345 | info@cxsltd.com | www.cxsltd.com







- September 28, 2020
- September 30, 2020
- October 1, 2020

**TIGER GOLD  
EXPLORATION CORPORATION**

**BRADETTE PROPERTY**  
Bradette Township, Ontario

PROSPECTING TRAVERSE PLAN MAP  
September 28 to October 1, 2020

