

We are committed to providing [accessible customer service](#).

If you need accessible formats or communications supports, please [contact us](#).

Nous tenons à améliorer [l'accessibilité des services à la clientèle](#).

Si vous avez besoin de formats accessibles ou d'aide à la communication, veuillez [nous contacter](#).

**Report on a Prospecting Survey on the Eldee Lake Claim Group for
Whitefish Exploration Ltd.**

**Ashmore Township
Thunder Bay Mining Division
Northwestern Ontario**

**NTS 42-E-10
B.Ed.
UTM Zone 16
511000 E 5503000 N**

Rand Hodgson B.Sc.

December 10, 2020.

Table of Contents

- 1 Introduction
- 2 Property Description, Location, and Access
- 3 Topography and Drainage
- 4 Summary of Previous Exploration
- 5 Regional Geology
- 6 Property Geology
- 7 Mineralization
- 8 Work Done
- 9 Conclusions and Recommendations
- 10 References
- 11 Statement of Qualifications

Maps

- figure 1 Location Map
- figure 2 Detailed Location Map
- figure 3 Regional Geology
- figure 4 Claim Map
- Figure 5 Forrester Gold Mining -Geophysics with proposed drill locations

Appendix

- Appendix I – Daily Report of Work
- Appendix II- Expense Summary
- Appendix III – Receipts
- Appendix IV – Forrester Gold Proposed Drill Locations
- Appendix V – 1: 5000 Map- Geology and Prospecting Traverses

1 Introduction

This report describes a geological mapping and prospecting survey carried out on six single unit unpatented claims in Ashmore Township, Thunder Bay Mining Division. The survey was carried out on September 8, 2020 by Rand Hodgson and Roland Hodgson, both residing at 287 Swanston Ave. Peterborough Ontario. It was carried out using pace and compass navigation supplemented by GPS. No rock or soil samples were analysed. A map indicating geology and prospecting results are recorded in Appendix I – scale 1 : 5000.

2 Property Description, Location, Access

The Eldee Lake property consists of 2 full claim units and four boundary claim units located approximately 10 kilometers south-east of Geraldton, Ontario, in south-east Ashmore Township. The claim group is registered in the name of Whitefish Exploration Ltd. Client # 10003285. The claim numbers are 546119-546124. Provincial Grid cell numbers are 42E10K324, 325, 344, 345, 364, and 365. The area of the claim group is approximately 75 hectares. They are subject to a 1% royalty in favour of the Ontario Exploration Corporation.

Access is by Highway 11 to Eldee Creek which crosses the highway 500 meters east of Kenogamisis Road, then by canoe 500 meters south onto Eldee Lake. Most of the group overlies the lake, with about 15 % on land on the east side of the lake.

3 Topography and Drainage

The claims are almost entirely overlying Eldee Lake. Parts of claim 546121 and claim 546123 are on land on the east side of the lake. All land areas are very low-lying, swampy, with little rock outcrop. There are three small islands outcropping in the lake near the south boundary of the group. There is a low sandy hill on claim 546123 ; linear trending north-easterly, possibly a small esker.

4 Summary of Previous Exploration and Development

Gold was discovered in the Geraldton area in 1931. The Geraldton gold camp, centred around the western end of Ashmore Township, produced over 3 million ounces of gold and 24,000 ounces of silver between 1934 and 1970. There are hundreds of high-grade gold occurrences in the Beardmore-Geraldton belt mostly associated with sulphide mineralized quartz veins within shear zones and folds within iron formation. There are numerous gold occurrences located within 500 meters east of the property, and it is bounded on its west and south by the Greenstone Gold Mines property. The Roche Long Lac shaft is located approximately 500 meters east of claim # 546121. Sampling by Kodiak Exploration in 2010 in the vicinity of this shaft located numerous gold occurrences up to 292 grams per tonne (gpt).

In 1936, Roche Long Lac Ltd. drilled 6 holes in a north-south fence over Eldee Lake. It intersected a wide zone (55 ft.) of mineralized quartz veins with low gold values (Pye 1951) in albite porphyry. This is a lithology closely linked to several large-tonnage deposits in the Beardmore-Geraldton belt, including the McCleod-Cockshutt "F" zone. In 1983, Cambridge Resources drilled a single hole on the ice on Eldee lake. It failed to intersect significant gold values but intersected albite porphyry and quartz veins. (Eccles, 1983) The exact location of these holes is unknown. In 1990, a single hole was drilled to a depth of 550 feet on historical claim #846002 on the south-east shore of the lake (Brian Doherty/Cayuga Syndicate). It intersected conglomerate, iron formation, albite porphyry, and quartz veins. No assays were reported.

There have been at least two geophysical surveys done on the claims ; an airborne VLF-EM by H.Ferderber Geophysics in 1987 (file # 2.10136) and a high resolution ground VLF EM and Mag survey (on ice) by Forrester Gold Mining Corp. in 1997. The ground survey identified at least 13 drill targets on the current property. (Appendix IV).

5 Regional Geology

The Beardmore-Geraldton Greenstone Belt is an Archean supracrustal sequence of metamorphosed volcanic and sedimentary rocks which are intruded by several granitic stocks. The belt is part of the Wabigoon and Quetico Subprovince.

The volcanic assemblage consists of mafic pillowed and massive flows, felsic porphyritic flows with minor interbedded lapilli tuffs and tuff breccias. The sedimentary assemblage consists of well-stratified beds of sandstone, wacke, siltstone, mudstone, and iron formation. These assemblages are commonly altered to chlorite, sericite, and amphibolite schists.

Two major east-west trending deformation zones dominate the structure of the belt- the Burrows River Deformation Zone (BRDZ) to the north, and the Barton Bay Deformation Zone (BBDZ) to the south (see Map 1- Regional Geology- from OGS report 273). The deformation in these zones is characterized by a “pervasive layer-parallel foliation and a series of shear zone systems that are associated with regional east-west trending faults. The economic potential of the area pertains mostly to gold which has been found associated with east trending regional deformation zones, specific lithological units, and iron formation” (1)

6 Property Geology

The claims overly the inferred contact between the BBDZ and the mafic volcanic/albite porphyry unit to the north. There is very little outcrop on the property due to the fact that it overlies Eldee Lake primarily. Small outcrops on islands on the lake and also locally east of the group have been identified as wackes, iron formation, and albite porphyries. These lithologies are also consistently reported from historical drilling.

7 Mineralization

None of the rocks outcrops examined during this prospecting survey contained anomalous mineralization. No rock or soil samples were assayed.

Commented [r1]:

8 Work done

The survey was carried out on September 7 and 8, 2020. Four man-days were spent on the survey plus two more spent compiling historical data from EMDM files.

9 Conclusions and Recommendations

The claims were staked because of their close proximity to the Greenstone Gold Mines property (they are contiguous) as well as the inferred underlying geology being part of the BBDZ which is the lithostratigraphic unit in which all the economic gold mineralization occurs in the Geraldton mining camp. The Eldee Lake property has had very little exploration in the past because it is mostly water covered and even the land portions have no outcrops other than on the small islands. Further, the property contains the lithologies most favourable for gold mineralization: sediment, iron formation, albite porphyry, diorite porphyry and abundant quartz veining. The lithologies are confirmed by the prospecting as well as by historical drilling and geophysics.

The high resolution Mag and VLF-EM ground survey by Forrester Gold Mining Corp. identified 35 electromagnetic conductors and narrowed these down to 9 proposed drill locations using the mag. These claims remain highly prospective for these reasons.

10 References

- 1) Kresz, D.U, and Zayachivsky, B, 1991, Precambrian Geology of the Northern Long Lac Area, OGS Report 273.
- 2) Bowdidge, C.R, 1997, Report on Total Field Magnetic and VLF-EM Survey for Forrester Gold Mining Corp. EMDM Assessment file # 2.18688.
- 3) Eccles, L, 1983, Report on the Roche Long Lac Property for Cambridge Resources Ltd. EMDM Assessment file # 2.6152
- 4) Horwood, H.C, Pye, E.G, 1951, Twp. Of Ashmore Geology Map M-1951-2. OGS Publication.
- 5) Mason, M and White, G, 1986, Gold Occurrences of the Beardmore-Geraldton Area, OGS OFR 5630.
- 6) Ferderber, H., 1987, report on VLF AEM survey, Ashmore and Croll townships, MNDM AFRO file # 2.10136

11 Statement of Qualifications

I, Rand Hodgson, of 287 Swanston Ave., Peterborough, Ont., do hereby state:

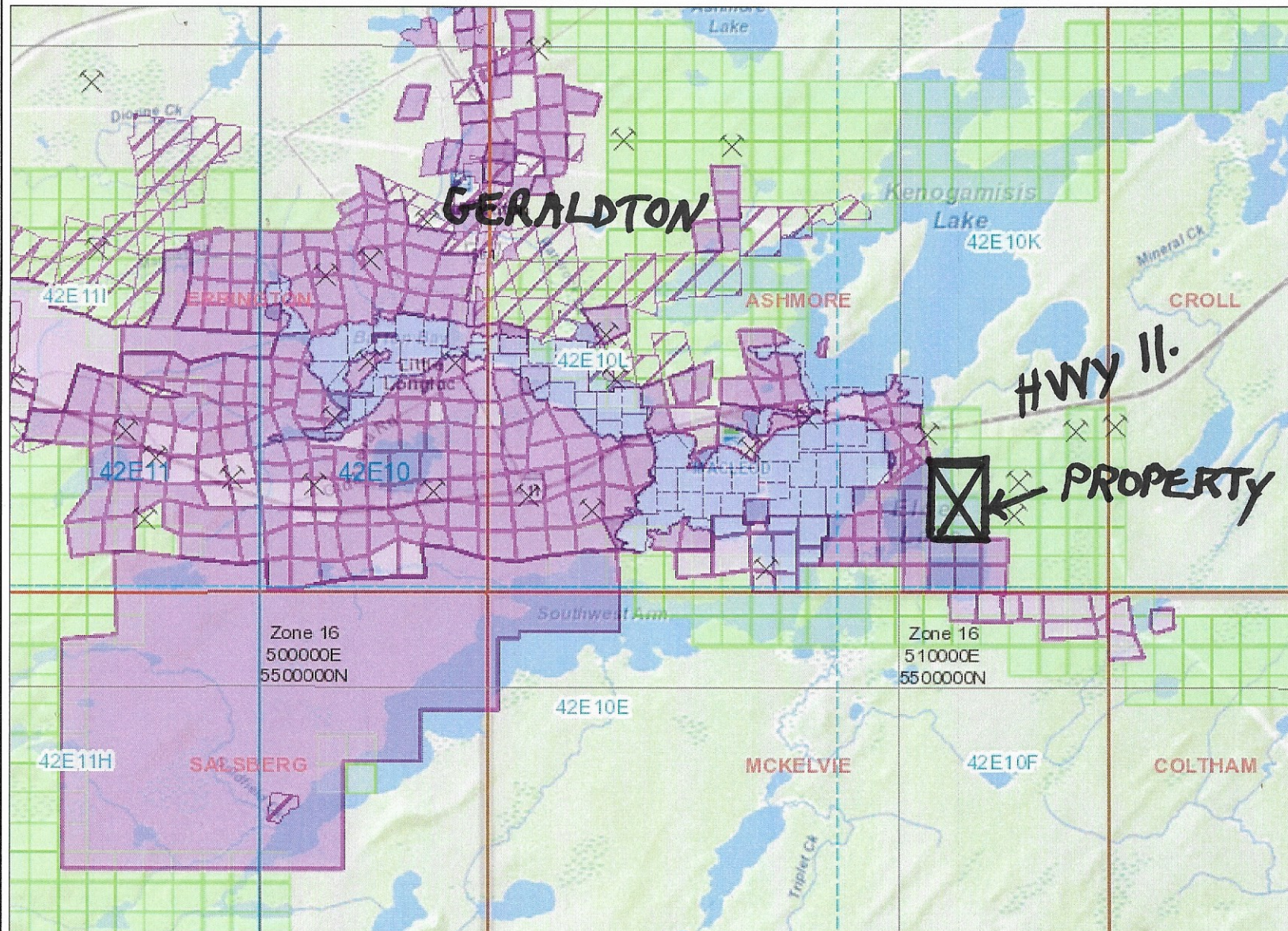
- 1) That I have been a consulting geologist practicing my profession from the above address since 2016, and have been actively engaged in mineral exploration since 1977.
- 2) That I hold a B.Sc. (Earth Science) from the University of Waterloo (1977)
- 3) That I am the author of the report on the Whitefish Exploration Ltd. Eldee Lake claims, and that I personally supervised and carried out the field program.
- 4) That the data contained in this report is true to the best of my knowledge.

Rand Hodgson
Dec. 10, 2020.

**ELDEE LAKE
PROPERTY**



Fig. 1: LOCATION MAP



Legend

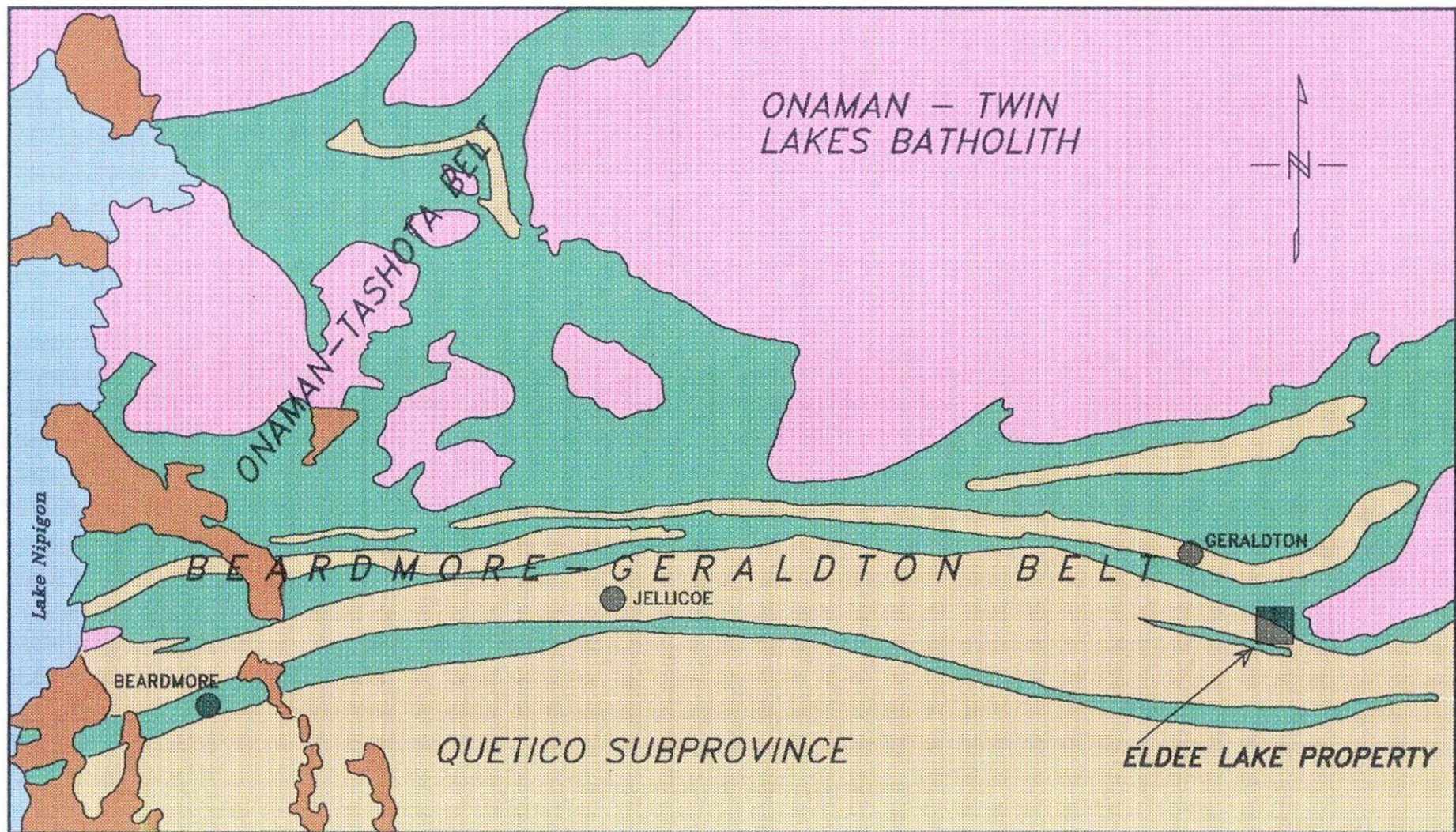
- Provincial Grid Cell**
 - Available
 - Pending
 - Unavailable
- Mining Claim**
 - Mining Claim
 - Boundary Claim
- Alienation**
 - Withdrawal
 - Notice
- ENDM Administrative Boundaries**
 - ENDM Townships and Areas
 - Geographic Lot Fabric
 - UTM Grid 1K
 - UTM Grid 10K
 - Mining Division
 - Mineral Exploration and Development Region
 - CLUPA Protected Area - Far North
 - Resident Geologist District
 - Federal Land Other
 - Native Reserves
- AMIS Sites**
 - AMIS Sites
 - AMIS Features
 - Drill Hole
 - Mineral Occurrences
- MLAS Mining History**
 - Withdrawal - History
 - Notice - History
 - Mining Claim - History
 - Mining Land Tenure - History
 - Legacy Claim
- Provincial Grid**
 - Provincial Grid 250K
 - Provincial Grid 50K
 - Provincial Grid Group
- Land Tenure**
 - Surface Rights
 - Mining Rights
 - Mining and Surface Rights
 - Order-in-Council

Those wishing to register mining claims should consult with the Provincial Mining Recorders' Office of the Ministry of Energy, Northern Development and Mines for additional information on the status of the lands shown hereon. This map is not intended for navigational, survey, or land title determination purposes as the information shown on this map is compiled from various sources. Completeness and accuracy are not guaranteed. Additional information may also be obtained through the local Land Titles or Registry Office, or the Ministry of Natural Resources and Forestry. The information shown is derived from digital data available in the Provincial Mining Recorders' Office at the time of downloading from the Ministry of Energy, Northern Development and Mines web site.



Imagery Copyright Notices: Ontario Ministry of Natural Resources and Forestry; NASA Landsat Program; First Base Solutions Inc.; Aéro-Photo (1961) Inc.; DigitalGlobe Inc.; U.S. Geological Survey.
© Queen's Printer for Ontario, 2020



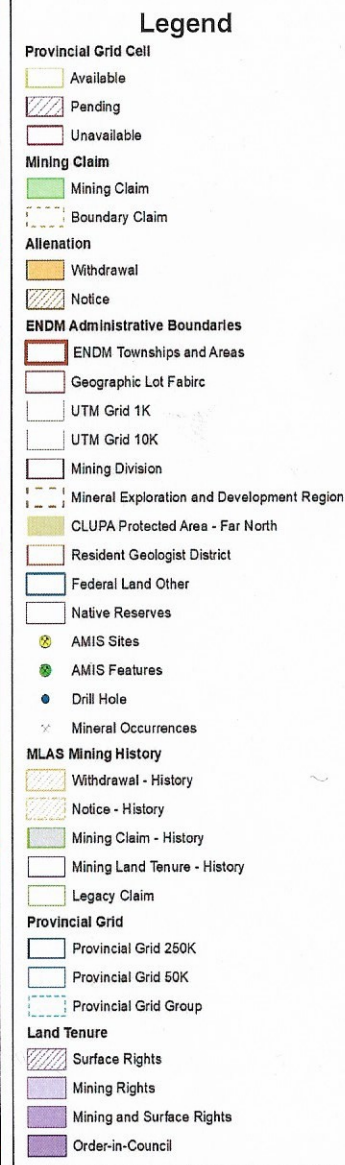
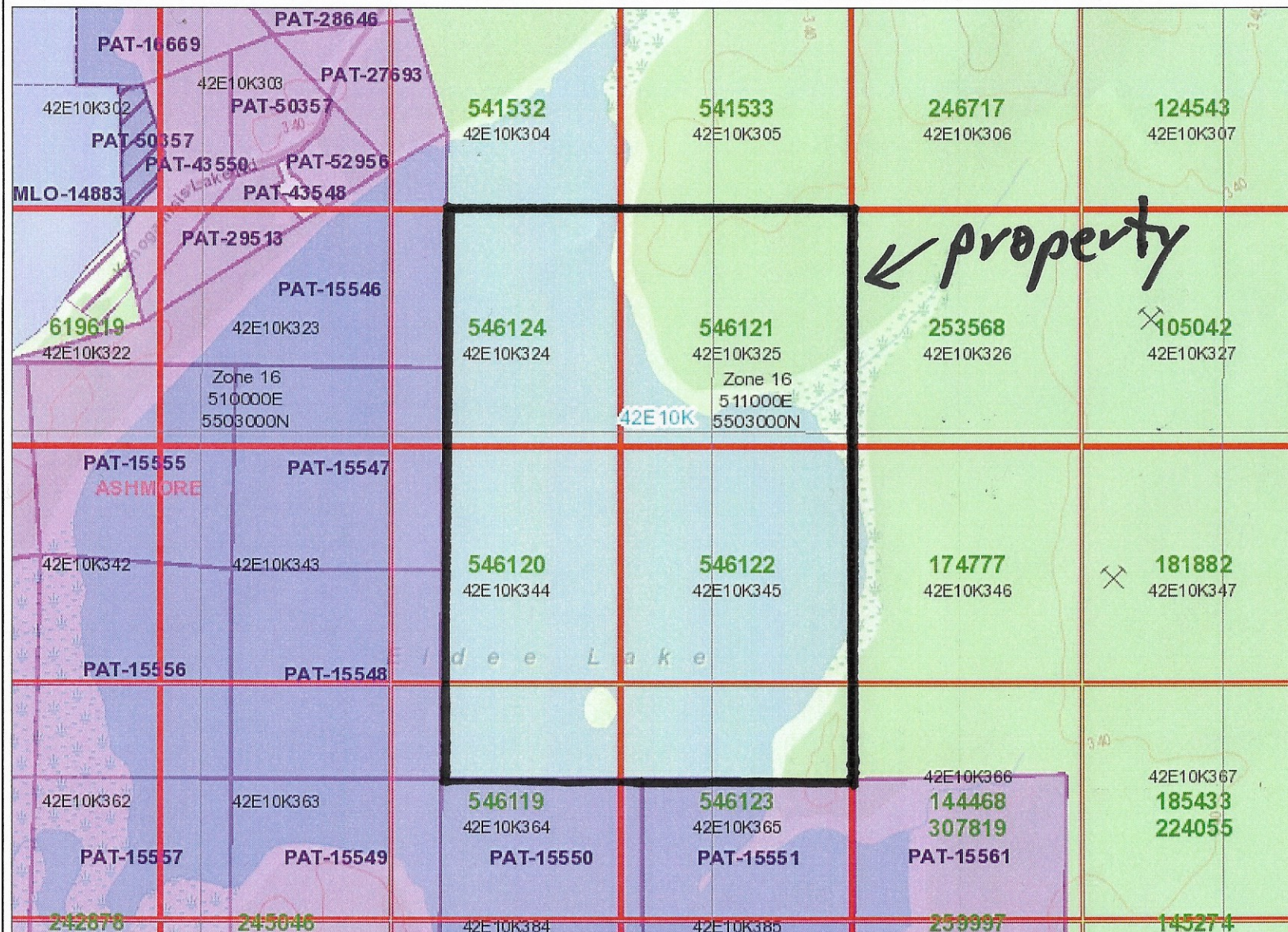


LEGEND

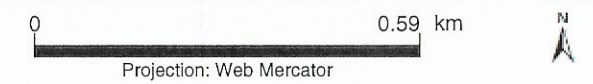
- Proterozoic diabase
- Granitic rocks
- Metasediments
- Metavolcanics

Fig. 3: Generalized Geological Map of the Beardmore-Geraldton Area





Those wishing to register mining claims should consult with the Provincial Mining Recorders' Office of the Ministry of Energy, Northern Development and Mines for additional information on the status of the lands shown hereon. This map is not intended for navigational, survey, or land title determination purposes as the information shown on this map is compiled from various sources. Completeness and accuracy are not guaranteed. Additional information may also be obtained through the local Land Titles or Registry Office, or the Ministry of Natural Resources and Forestry. The information shown is derived from digital data available in the Provincial Mining Recorders' Office at the time of downloading from the Ministry of Energy, Northern Development and Mines web site.



Imagery Copyright Notices: Ontario Ministry of Natural Resources and Forestry; NASA Landsat Program; First Base Solutions Inc.; Aéro-Photo (1961) Inc.; DigitalGlobe Inc.; U.S. Geological Survey.
© Queen's Printer for Ontario, 2020



Appendix I

Eldee Claims - Daily Report of Work

-Sept. 7 / 2020 - prospecting islands in Eldee Lake and south-east part of claim 546123.

- Sept. 8 / 2020 - prospecting claim 546123.

- 2 days, 2 men - total 4 man-days prospecting

Appendix II

(E L dee)
2020

Expenses Summary

		\$
July 8	- Garmin rental	22.50
Aug 24	- grocery	102.28
" 29	- train ticket	95. —
" 31	- Motel (Receipt 1)	145.49
" "	- Hearst Restaurant	34.75
" "	- Boat Gas	143.61
Sept 1	- " "	142.00
" "	- grocery	214.86
" "	- cabin rental (receipt 2)	847.50
" "	- helper wages	3300. —
" "	- mileage (truck)	1425. —
		<u>6472.99</u>

Notes: THESE EXPENSES ARE FOR
7 DAYS PROSPECTING.

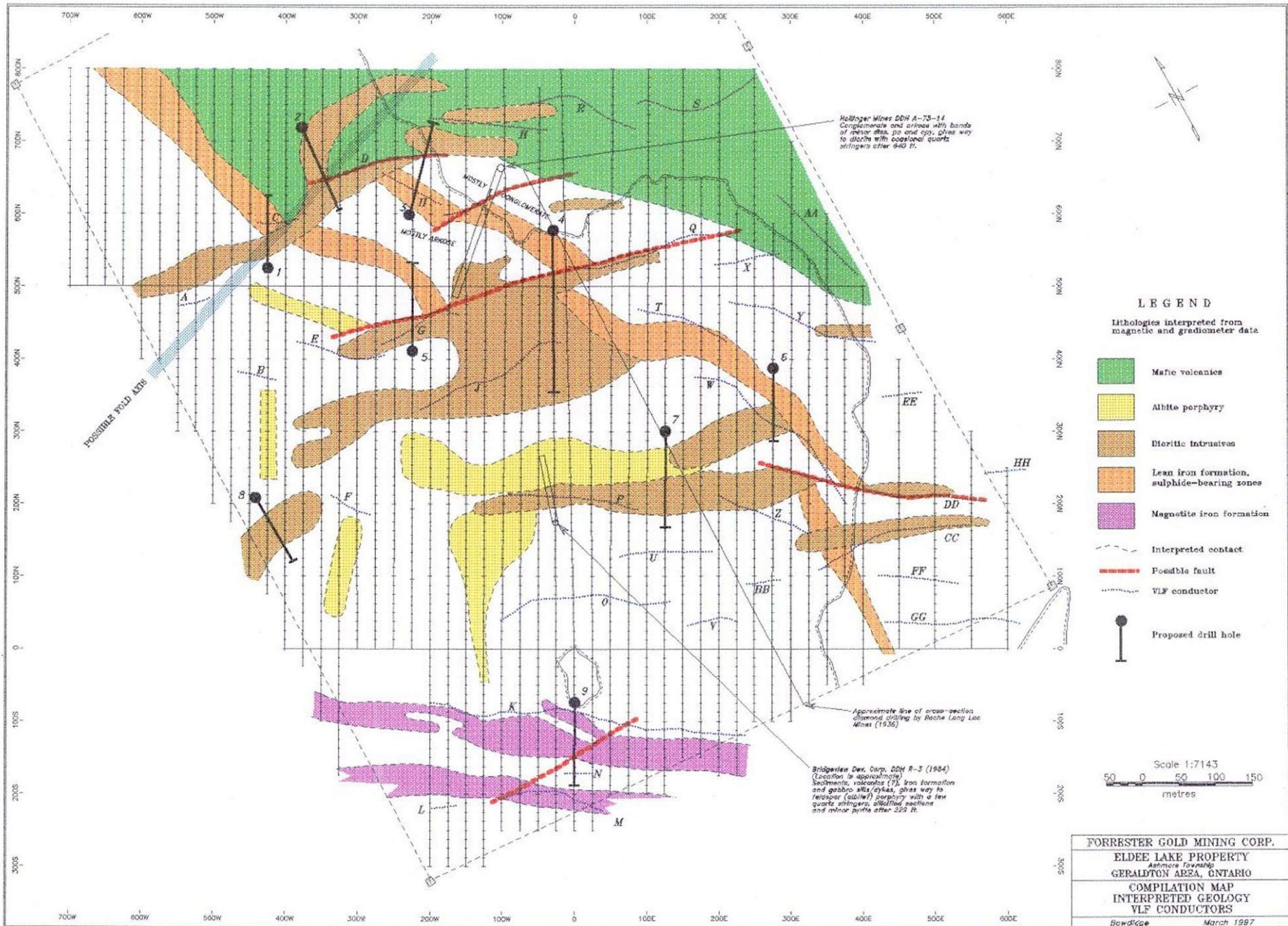
- ONLY 2 DAYS SPENT ON THIS REPORT.

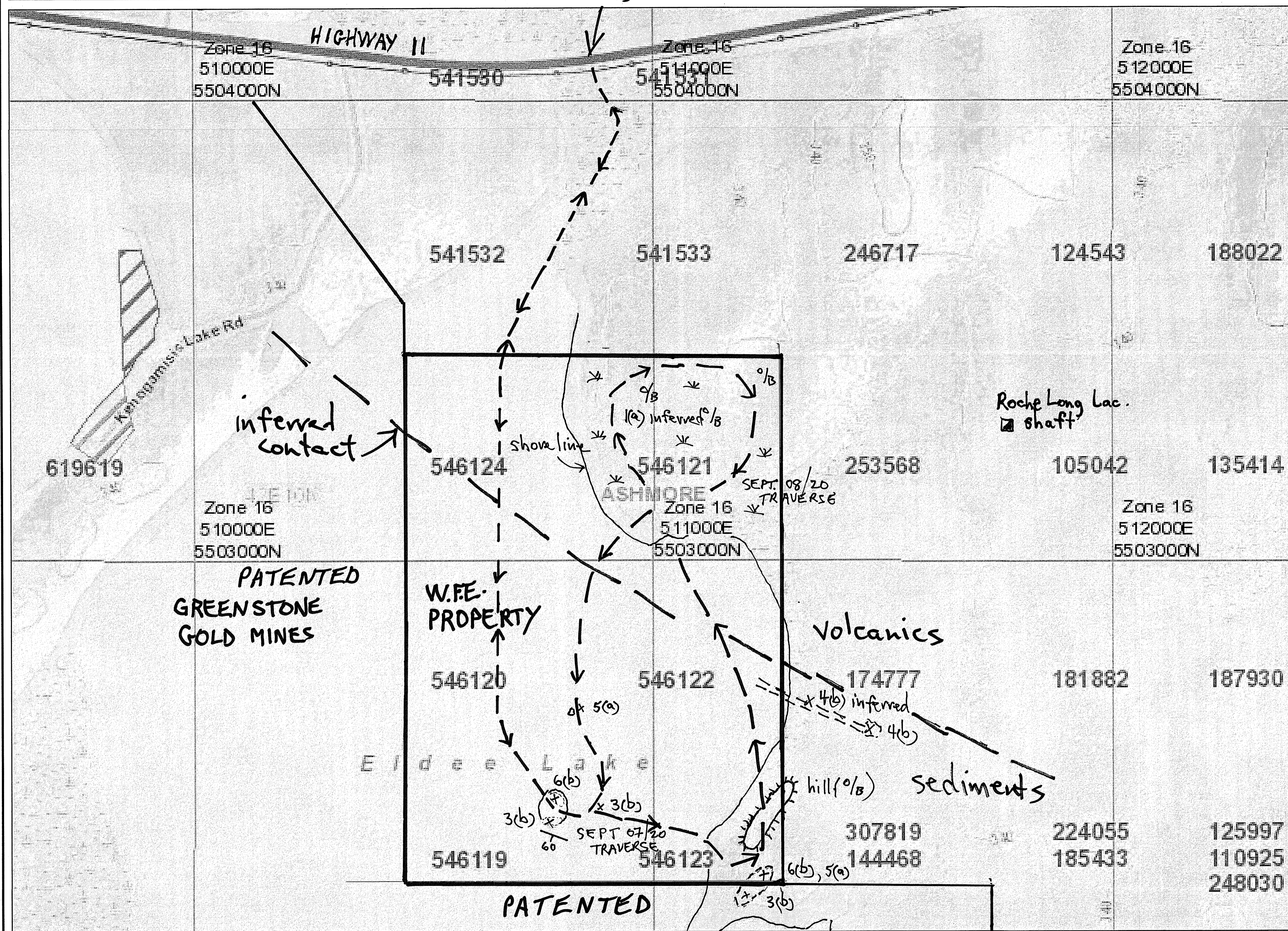
$$\frac{6472.99}{7 \text{ days}} \times 2 \text{ days} = \$1849.42$$

PAYS 2 DAYS - GEOLOGIST - 1000.00
@ 500 per day

GRAND TOTAL

\$ 2849.42





LEGEND	
① MAFIC VOLCANIC	(a) flow (b) tuff (c) schist - pillow lava
② felsic volcanic	(a) flow (b) tuff
③ Sedimentary	(a) sandstone (b) graywacke (c) schist.
④ Chemical sediment	(a) chert (b) iron formation (c) calcite
⑤ mafic intrusive	(a) diorite (b) gabbro
⑥ felsic intrusive	(a) granite (b) Q.F.P.
Symbols	
	ridge
o/o	overburden
swamp	swamp
→	strike, dip, foliation
x	small outcrop
○	large outcrop
---	inferred geological contact
o-o	polder line
Q.F.P.	quartz feldspar porphyry soil sample (with number)
R-	rock sample (with number)
py-	pyrite
po-	pyroclite
ser	sericite
mag.	magnetite
I.F.	iron formation
Au	gold
as.	arsenopyrite
↘	trench
□	pit
sil.	silicification
q.v.	quartz vein

**WHITEFISH EXPLORATION
ELDER LAKE PROPERTY
ASHMORE TWP.
drawn by R. Hodgson 12/20**

Those wishing to register mining claims should consult with the Provincial Mining Recorders' Office of the Ministry of Energy, Northern Development and Mines for additional information on the status of the lands shown hereon. This map is not intended for navigational, survey, or land title determination purposes as the information shown on this map is compiled from various sources. Completeness and accuracy are not guaranteed. Additional information may also be obtained through the local Land Titles or Registry Office, or the Ministry of Natural Resources and Forestry. The information shown is derived from digital data available in the Provincial Mining Recorders' Office at the time of downloading from the Ministry of Energy, Northern Development and Mines web site.



Imagery Copyright Notices: Ontario Ministry of Natural Resources and Forestry; NASA Landsat Program; First Base Solutions Inc.; Aéro-Photo (1961) Inc.; DigitalGlobe Inc.; U.S. Geological Survey.
© Queen's Printer for Ontario, 2020