

We are committed to providing [accessible customer service](#).

If you need accessible formats or communications supports, please [contact us](#).

Nous tenons à améliorer [l'accessibilité des services à la clientèle](#).

Si vous avez besoin de formats accessibles ou d'aide à la communication, veuillez [nous contacter](#).

**Prospecting on
Cell 524992 in
Telfer Township, Sudbury, Ontario
Sheppard Claims
September 19, 2019**

F. Delabbio, P.Eng.

TABLE OF CONTENTS

Location and Access	1
Location Map	2
Claim Map (Cells)	3
Work Log	4
Preamble	5
Prospecting Map #1	6
Prospecting Map #2	7
Picture #1 (Looking East noting bedding in Mudstone)	8
Picture #2 (Looking N10 degrees E)	
Picture #3 (Looking south on fault)	
Picture #4 (Looking down face of EW fault)	
Picture #5 (Looking along EW fault)	

LOCATION AND ACCESS

Aylmer Township is located north of Lake Wanapitei, Sudbury Mining Division. Access to the mining claims in Aylmer Township is via Highway 545 North of Capreol and onto the Portelance Road. You travel north for 18 km after the turnoff for the Wanapitei First Nation. You then leave the Portelance Road and turn south over the bridge of the Wanapitei River onto the Poupore Road. You travel south on the Poupore Road for 11 km to 13 km to the gravel pit on the edge of the east branch of the Wanapitei River. You turn south towards lake Wanapitei on the North River Park Road for 2 km to the middle of the claim.

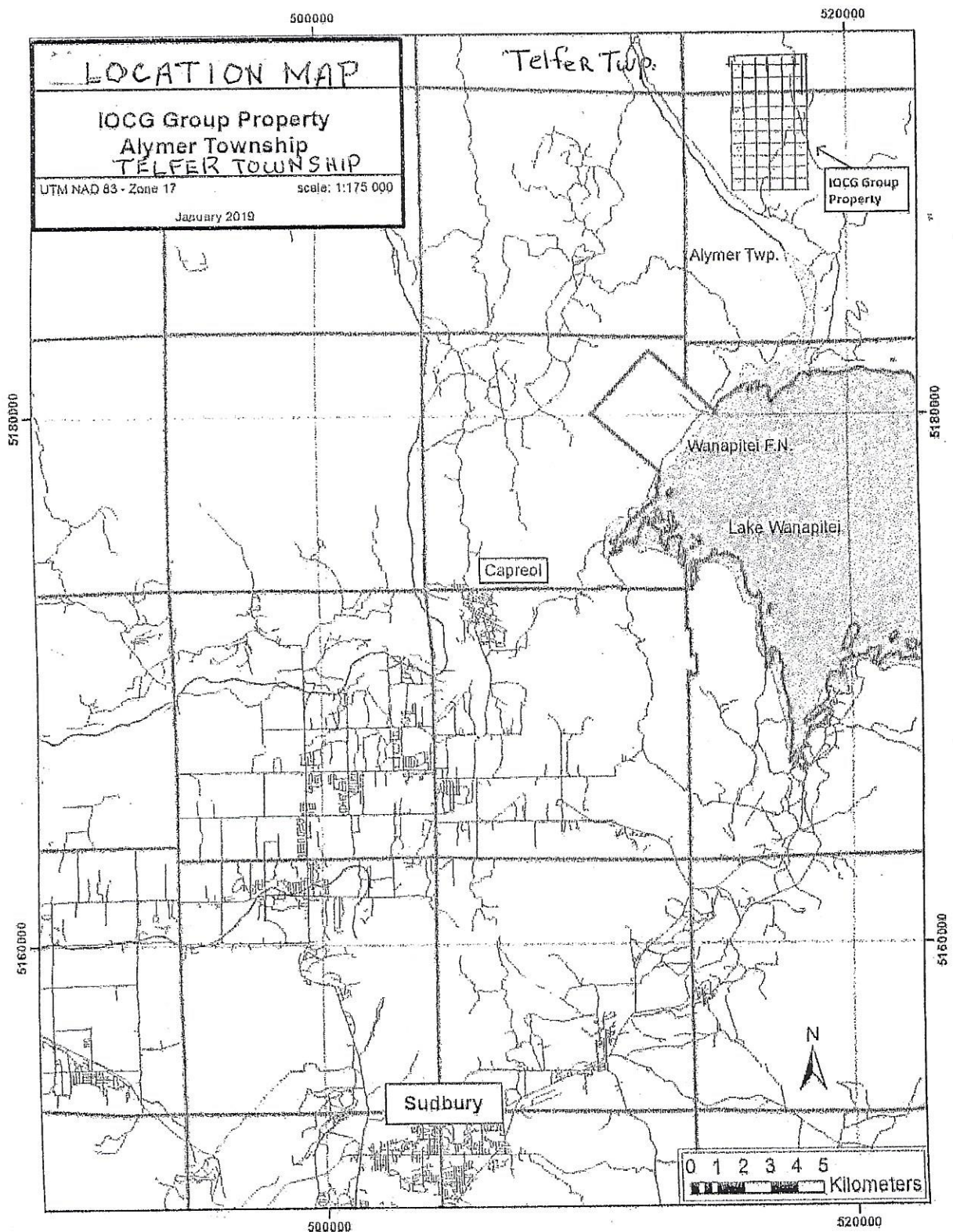
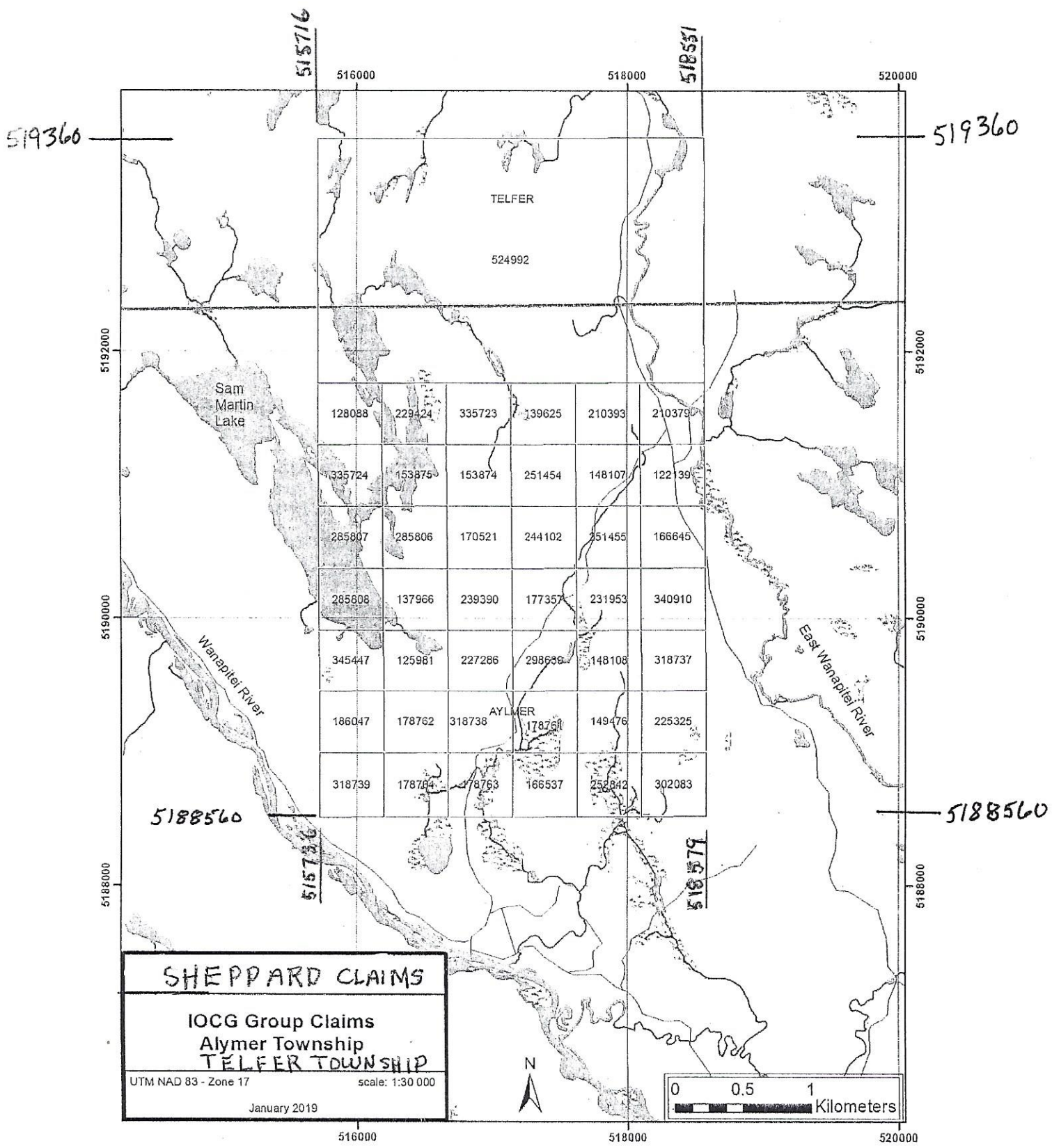


Figure 1: Property location map



IOCG Joint Venture Group claim map

Abstract

We have done more prospecting and mapping in this area of claim 524992 to see if we can correlate the structure to the rest of the claims. It should be noted that this area is blank in the Ontario Geological survey map 2450. This appears to be a juncture of a N10 degrees E fault and a SW240 degrees fault with the east west fault terminated at the junction. We have taken pictures of different features of this junction, all in mudstone.

JOB..... AdLMFA
DATE..... Sept 19/19..... PAGE.....

Frank Moore and I went up to check access on the north end of the property as well as to sample float that was found in the gravel pit at the NW corner of the claim group. We then went up to map some outcrops ~~at~~ on cell 524892 on the NE corner. We mapped and photographed the fault zones in the area of the east composite inner. The bedding of the mudstone is $15-20^\circ$ with ancient ripple marks on some of the beds. The river fault is $16^\circ E$ and the cross faults $240^\circ SW$.

PARTY CHIEF..... Fred Nibblha
WEATHER..... $T 23^\circ$ Sunny

518000E

518551

5193611



524992

Water falls

JACK PINE

5193000

LEGEND

- MUDSTONE 
- WACK E 

SCALE 1:10000
 TELFER TWP
 MAP 1

SHEPPARD CLAIM
 524992

JACK PINE JACK PINE

TELFER

POOPRE ROAD

JACK PIN

EAST BRANCH

AYLMER

JACK PINE

210 393

5192000



5193611

518551



518000E

ROOPRE ROAD

TELFER TWP

JACK PINE

f20°

524992


JACK PINE

JACK PINE
WANAPITEL RIVER

JACK PINE

519300

LEGEND

MUDSTONE 

FAULT 

DIP 

SCALE 1:5000

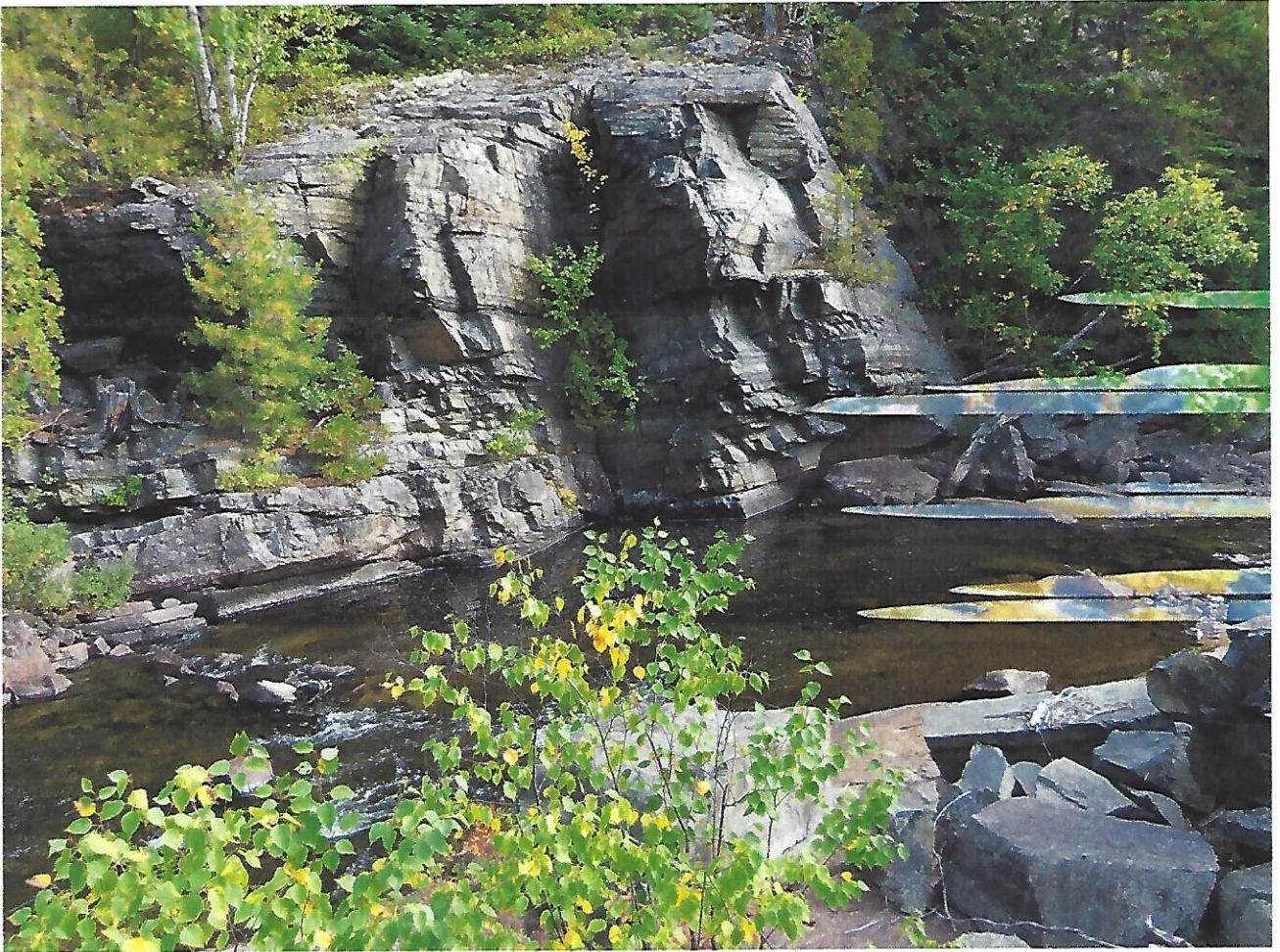
TELFER TWP

MAP 2

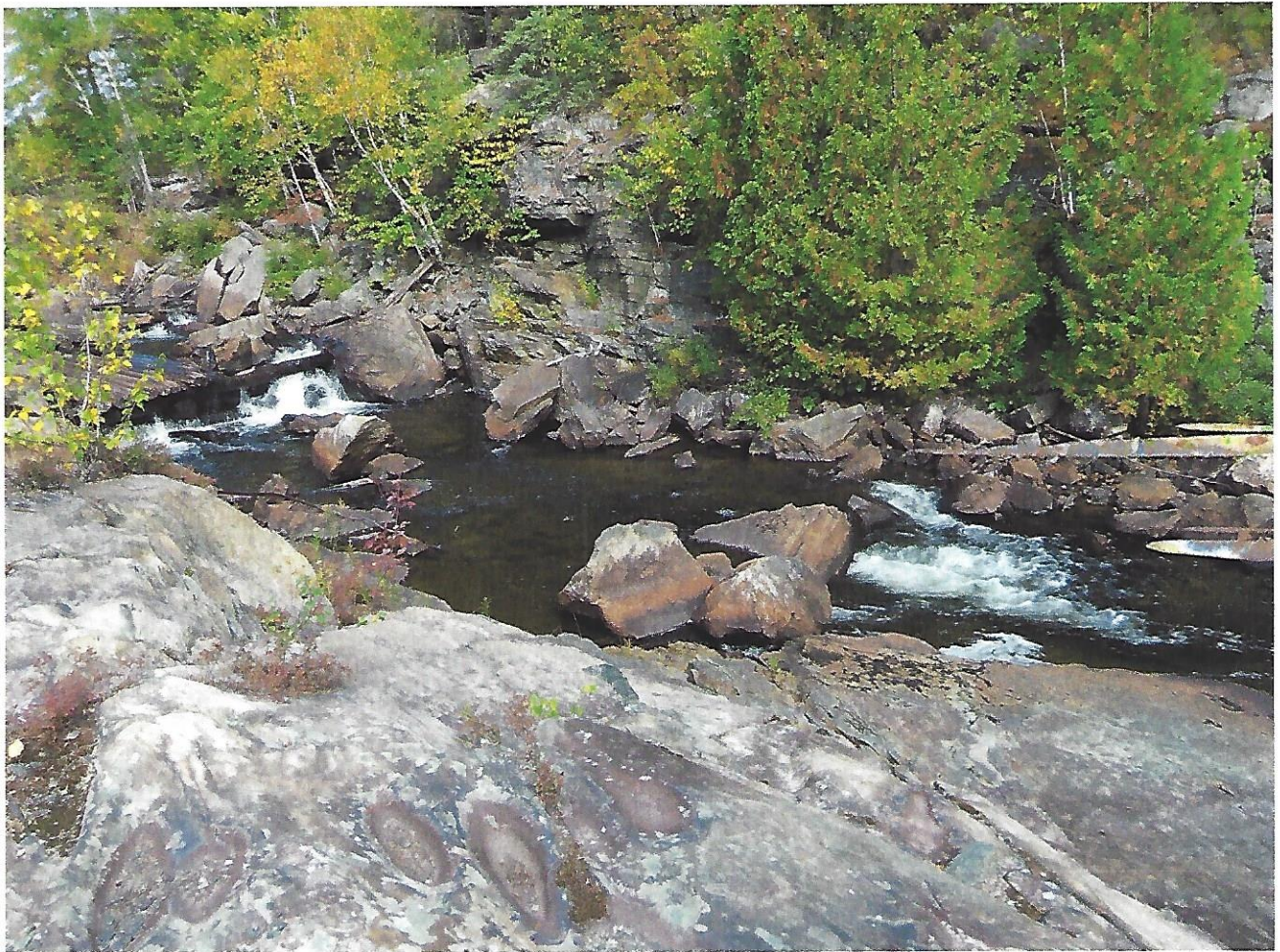
SHEPPAR CLAIM

524992

Looking ~~west~~ east at MIRA fault



Picture #1



Picture #2

Looking into fault from
North Side
Picture 4

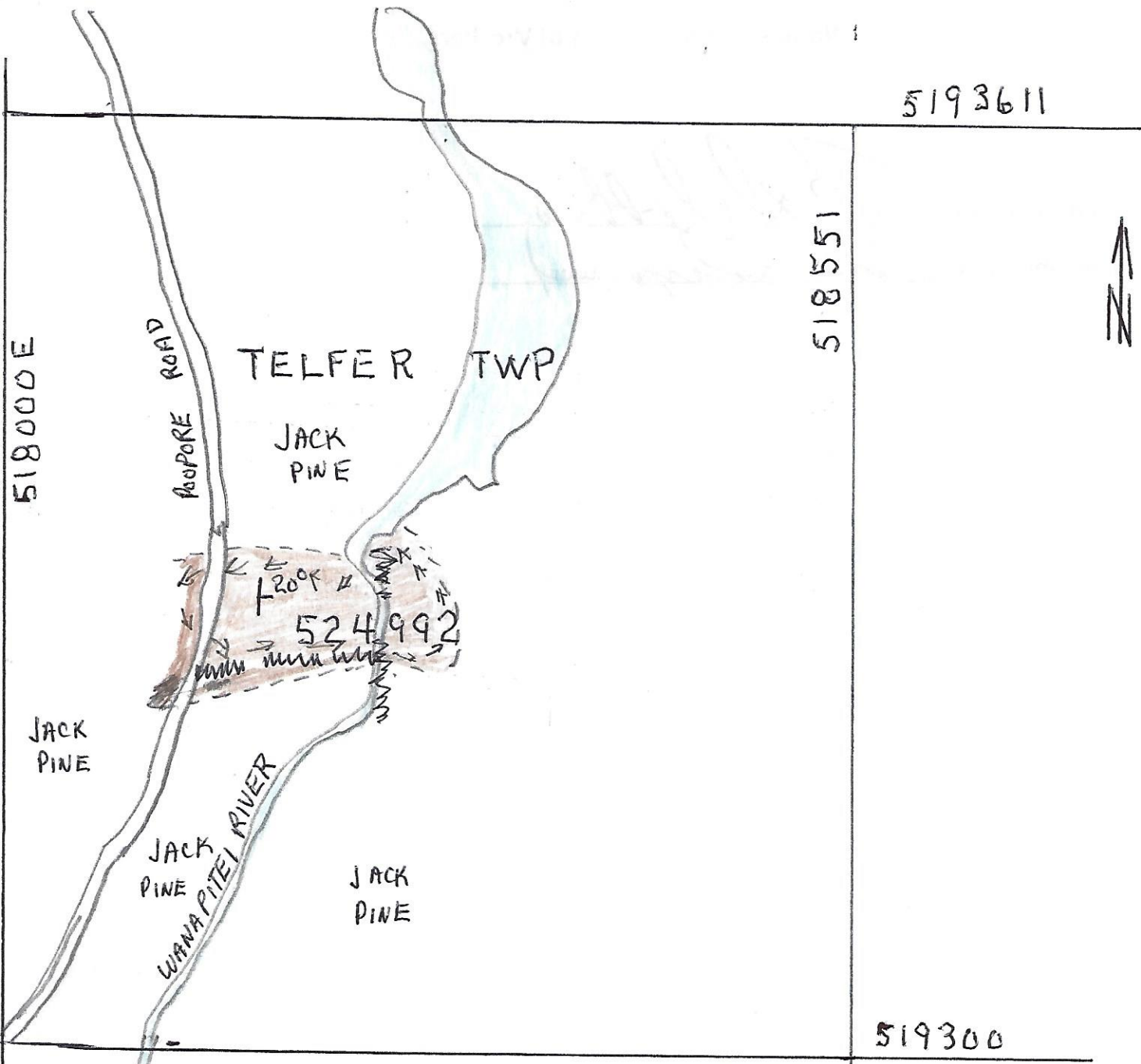


Looking south along river fault
Picture 3





Picture 5 Looking along E-W
fault



LEGEND

- MUDSTONE
- FAULT
- DIP

SCALE 1:5000
 TELFER TWP
 MAP 2
 SHEPPAR CLAIM
 524992
 TRAVERSE → →

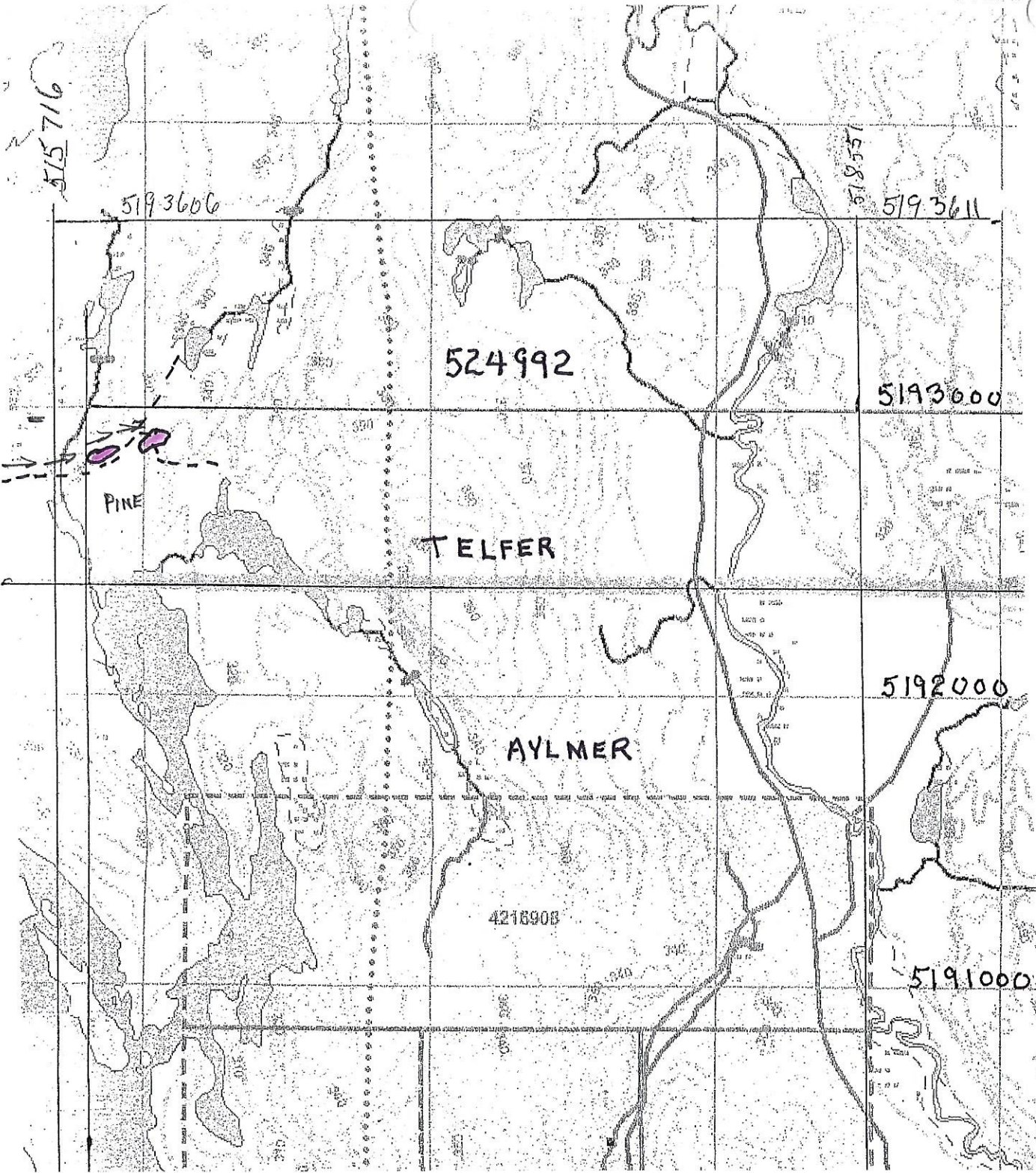
515000E

516000E

517000E

518000E

519000E



+
 0514364
 5193145
 ↓
 gravel
 *

PINE
 gravel



SHEPPARD
 I.O.C.G CLAIMS
 TELFER-AYLMER
 TWPS
 SAMPLE +
 ACCESS ROAD ----
 GRAVEL PIT O
 CULVERT OUT *
 GREYWACKE []
 TRAVERSE → →
 SCALE
 1:20000
 SEPT 6/19