

We are committed to providing [accessible customer service](#).

If you need accessible formats or communications supports, please [contact us](#).

Nous tenons à améliorer [l'accessibilité des services à la clientèle](#).

Si vous avez besoin de formats accessibles ou d'aide à la communication, veuillez [nous contacter](#).

Prospecting Report

Claims 340315, 166538, 122028, 122027, 531495, 531492

Cleaver Township

Larder Lake Division

Ontario

By

Victor WA Warford

111 Evans ST

South Porcupine, Ontario

September 2017

Prospecting Log

This report covers the prospecting done during the Fall of 2018 and the summer of 2019 on 6 claim units 340315, 166538, 122028, 122027, 531495, 531492. These claims are located in the south west portion of Cleaver Township. Access via the Forks River Road from Tisdale St. South Porcupine south, 43 km to an old logging road, then a 2km drive down an old logging road. The forest in this area is mixed boreal bush, mixed hard and soft wood trees with heavy moss cover, at times knee deep. Travel is very difficult, careful footing must be observed at all times.

Sept 15,2018

7:30am Travelled to claims solo. Nice fall day, mosquito's are not too bad. Explored area around the creek and the igneous dike to the north(Map 1 blue track). Collected sample 1(48.12732N, 8104109W) in creek bed. Sample 2(48.12981N, 81.04247W) was collected in a tag alder thicket. On return to town samples were cut. Sample 1 is quartz with fine grained sulfides. I visited Kian Jensen who identified sample 2 as being an igneous dike material, green in colour, and we discussed the nature of these types of dikes.



sample 1



sample 2

Sept 22,2018

Travelled to claims with William Baker. Another nice fall day, partly cloudy. Followed igneous dike SW to the shaft area(Map 1, green track). Discovered indications of past work along the way. Took sample 3 (48.12749N,81.04824w) at an old trench, it was green with quartz and minor sulfides.



sample 3



sample 3



sample 3

Sample 4 (48.12713N, 81.04944) was taken in the shaft area. It is green and quartz with minor sulfides.



sample 4

Oct 13,2018

Travelled to claims with William Baker. Weather was cool with heavy dew. Travelled east along indicated route(Map 2, red track). Encountered heavy bush and a large wind fall area, making travel very difficult. Took sample 5 (48.13452N, 81.03311W) it was green and red with minor quartz.



sample 5

June 24,2019

Traveled to claims with William Baker. Road washed out about 34 km in. There was a forestry crew fixing road. Had to turn back

June 25, 2019

Travelled to claims with William Baker. Rained for 3 hours in the early morning. Mosquitos and black flies were in clouds, it made for bad conditions. Travelled east along indicated route(Map 2 orange track). Took

sample 6 (48.13531N, 81.03391) and sample 7 (48.13521N, 81.03393W) in a wind blown area. Cut samples on return home.



sample 6



sample 7

June 26, 2019

Visited ENDM District Geologist-Timmins who identified sample 6 as a fluorite porphyry and sample 7 as igneous rock and possibly lamprophyre because of mica in small masses. Also visited Kian Jensen to discuss these samples as well.

June 28, 2019

Contacted Dr. Shannon Zurevinski of Lakehead University and sent her a sample to be analyzed.

July 8, 2019

Travelled to claims with William Baker. Weather was very warm and the deer flies and horse flies were very ferocious, bug suit failed, making

conditions miserable(Map 1, yellow track). Took very large sample 8(48.13011N, 81.04148W) on west side of road it was green with minor sulfides . Travelled SW along dike to the shaft. Sample 9(48.12739N, 81.04820W) in the old trench NE of the shaft it was green with minor sulfides . Sample 10 (48.12981N, 81.04942W) was taken from the waste pile beside shaft, it was green with small quartz stringers and minor sulfides. On return, took sample 11 (48.12981N, 81.04247W) on the east side of the road it was green with minor sulfides.

July 9, 2019

Cut samples 8,9,10 and 11 and brought them to the ENDM office and discussed the samples with the Regional Resident Geologist and the Mineral Deposit Compilation Geoscience Northeast.



sample 8



sample 9



sample 10



sample 11

July 11 and 12, 2019

Prepared report.

July 13, 2019

Travelled to claims with William Baker. Warm summer day, the second wave of mosquitos are here. Travelled east of the road(Map 3, blue track). Compass seemed to be all over the place. We had to go back to the road and restart. Eventually made it to the lake. Found signs of activity. Took two samples. Sample 12 (48.13454N, 81.04198W) was green with quarts and minor sulfides. Sample 13 (48.13586N, 81.04352W) was multicoloured with minor sulfides. Upon return home had a flat and a slow leak patch 3 holes.



Sample 12



Sample 12



Sample 12



Sample 13

July 16, 2019

Worked on report.

July 17, 2019

Visited Kian Jensen with sample 13. Kian identified it as a altered volcanic rock. Finished report.

Conclusion

This prospecting work and report has been a great success. A much better understanding of the property has been realized. Future work can now go to more advanced exploration techniques, such as stripping and drilling

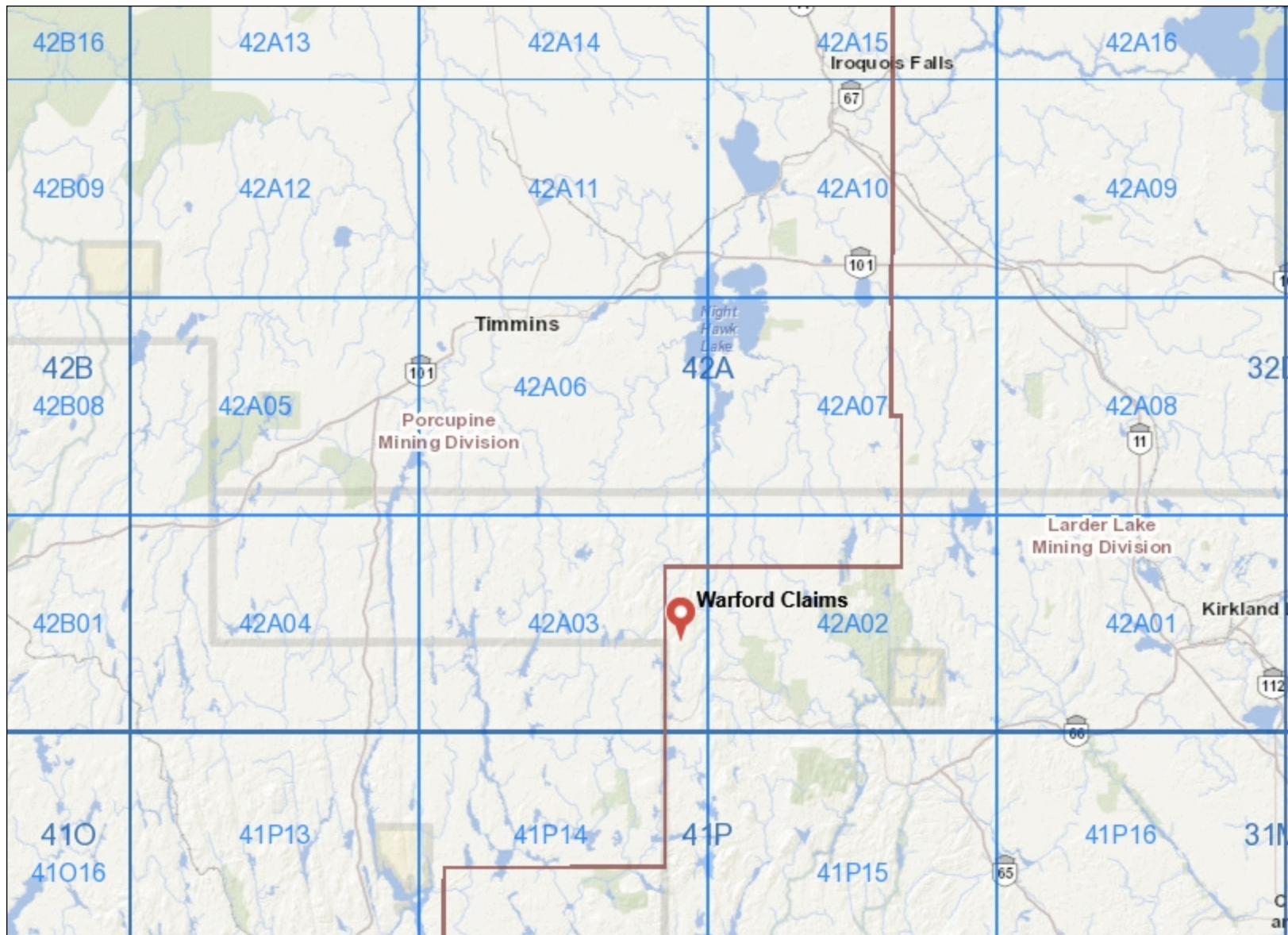
with a winkie drill. An exploration plan is being prepared and will be submitted shortly.

A special thanks goes out to William Baker B.S.C. who helped me greatly by looking at every rock he saw and notifying me when he saw something of interest,

A special thanks to Kian Jensen for taking time to share his vast knowledge in mineral exploration.

A special thanks to Angela SKinner for helping with this report.

Finally a special thanks to the staff at the ENDM - Porcupine for all of their knowledge and advice.



Legend

- Provincial Grid Cell**
 - Available
 - Pending
 - Unavailable
- Mining Claim**
 - Mining Claim
 - Boundary Claim
- Alienation**
 - Withdrawal
 - Notice
- ENDM Administrative Boundaries**
 - ENDM Townships and Areas
 - Geographic Lot Fabric
 - UTM Grid 1K
 - UTM Grid 10K
 - Mining Division
 - Mineral Exploration and Development Region
 - CLUPA Protected Area - Far North
 - Resident Geologist District
 - Federal Land Other
 - Native Reserves
- AMIS Sites**
 - AMIS Sites
 - AMIS Features
 - Drill Hole
 - Mineral Occurrences
- MLAS Mining History**
 - Withdrawal - History
 - Notice - History
 - Mining Claim - History
 - Mining Land Tenure - History
 - Legacy Claim
- Provincial Grid**
 - Provincial Grid 250K
 - Provincial Grid 50K
 - Provincial Grid Group
- Land Tenure**
 - Surface Rights
 - Mining Rights
 - Mining and Surface Rights
 - Order-in-Council



Projection: Web Mercator



The Ontario Ministry of Northern Development and Mines shall not be liable in any way for the use of, or reliance upon, this map or any information on this map. This map should not be used for: navigation, a plan of survey, routes, nor locations.

Imagery Copyright Notices: Ontario Ministry of Natural Resources and Forestry; NASA Landsat Program; First Base Solutions Inc.; Aéro-Photo (1961) Inc.; DigitalGlobe Inc.; U.S. Geological Survey.





Legend

- Provincial Grid Cell**
 - Available
 - Pending
 - Unavailable
- Mining Claim**
 - Mining Claim
 - Boundary Claim
- Alienation**
 - Withdrawal
 - Notice
- ENDM Administrative Boundaries**
 - ENDM Townships and Areas
 - Geographic Lot Fabric
 - UTM Grid 1K
 - UTM Grid 10K
 - Mining Division
 - Mineral Exploration and Development Region
 - CLUPA Protected Area - Far North
 - Resident Geologist District
 - Federal Land Other
 - Native Reserves
- AMIS Sites**
 - AMIS Sites
 - AMIS Features
 - Drill Hole
 - Mineral Occurrences
- MLAS Mining History**
 - Withdrawal - History
 - Notice - History
 - Mining Claim - History
 - Mining Land Tenure - History
 - Legacy Claim
- Provincial Grid**
 - Provincial Grid 250K
 - Provincial Grid 50K
 - Provincial Grid Group
- Land Tenure**
 - Surface Rights
 - Mining Rights
 - Mining and Surface Rights
 - Order-in-Council



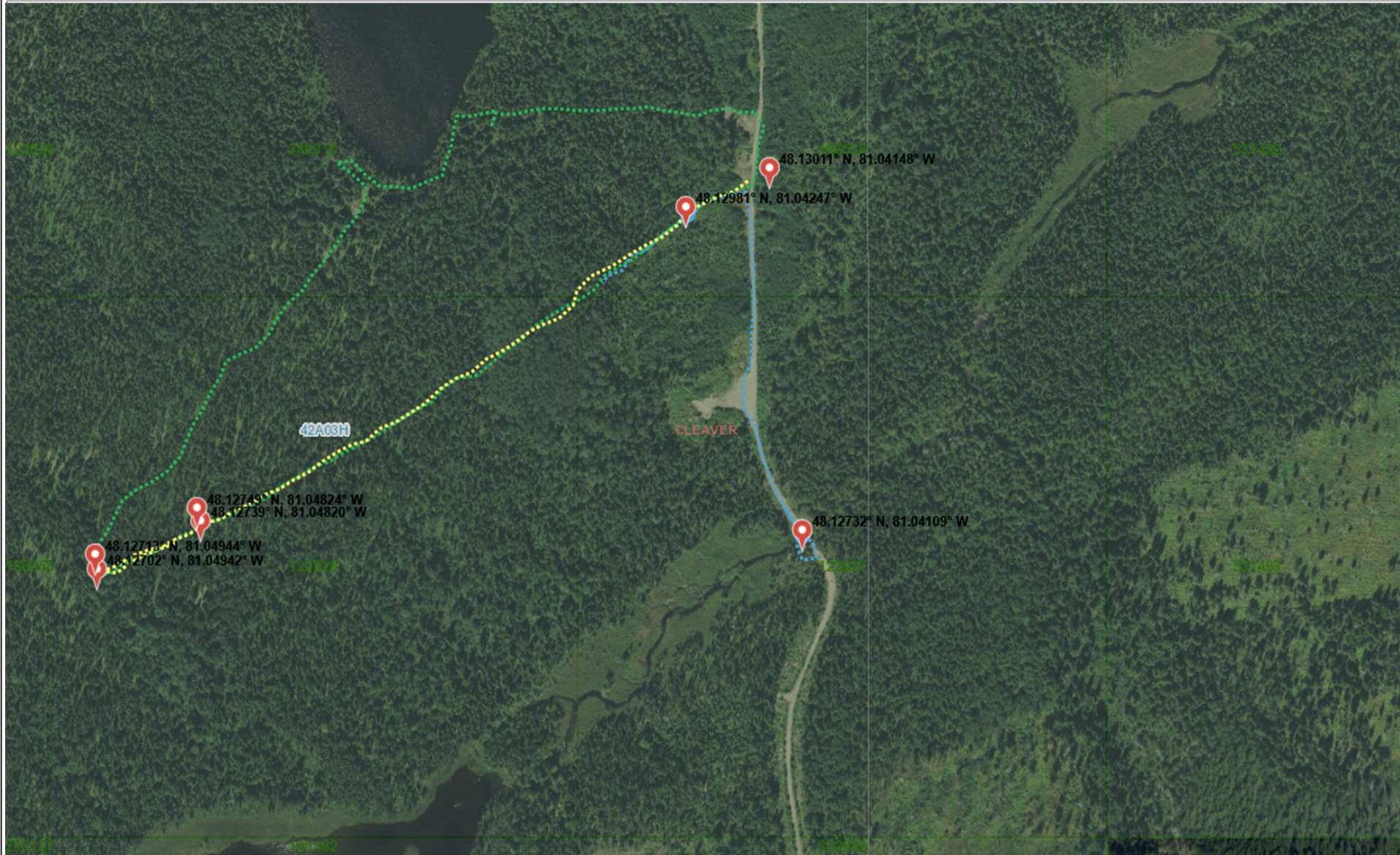
Projection: Web Mercator



The Ontario Ministry of Northern Development and Mines shall not be liable in any way for the use of, or reliance upon, this map or any information on this map. This map should not be used for: navigation, a plan of survey, routes, nor locations.

Imagery Copyright Notices: Ontario Ministry of Natural Resources and Forestry; NASA Landsat Program; First Base Solutions Inc.; Aéro-Photo (1961) Inc.; DigitalGlobe Inc.; U.S. Geological Survey.





Legend

- Provincial Grid Cell**
 - Available
 - Pending
 - Unavailable
- Mining Claim**
 - Mining Claim
 - Boundary Claim
- Alienation**
 - Withdrawal
 - Notice
- ENDM Administrative Boundaries**
 - ENDM Townships and Areas
 - Geographic Lot Fabric
 - UTM Grid 1K
 - UTM Grid 10K
 - Mining Division
 - Mineral Exploration and Development Region
 - CLUPA Protected Area - Far North
 - Resident Geologist District
 - Federal Land Other
 - Native Reserves
- MLAS Mining History**
 - Withdrawal - History
 - Notice - History
 - Mining Claim - History
 - Mining Land Tenure - History
 - Legacy Claim
- Provincial Grid**
 - Provincial Grid 250K
 - Provincial Grid 50K
 - Provincial Grid Group
- Land Tenure**
 - Surface Rights
 - Mining Rights
 - Mining and Surface Rights
 - Order-in-Council
- Other Symbols**
 - AMIS Sites
 - AMIS Features
 - Drill Hole
 - Mineral Occurrences

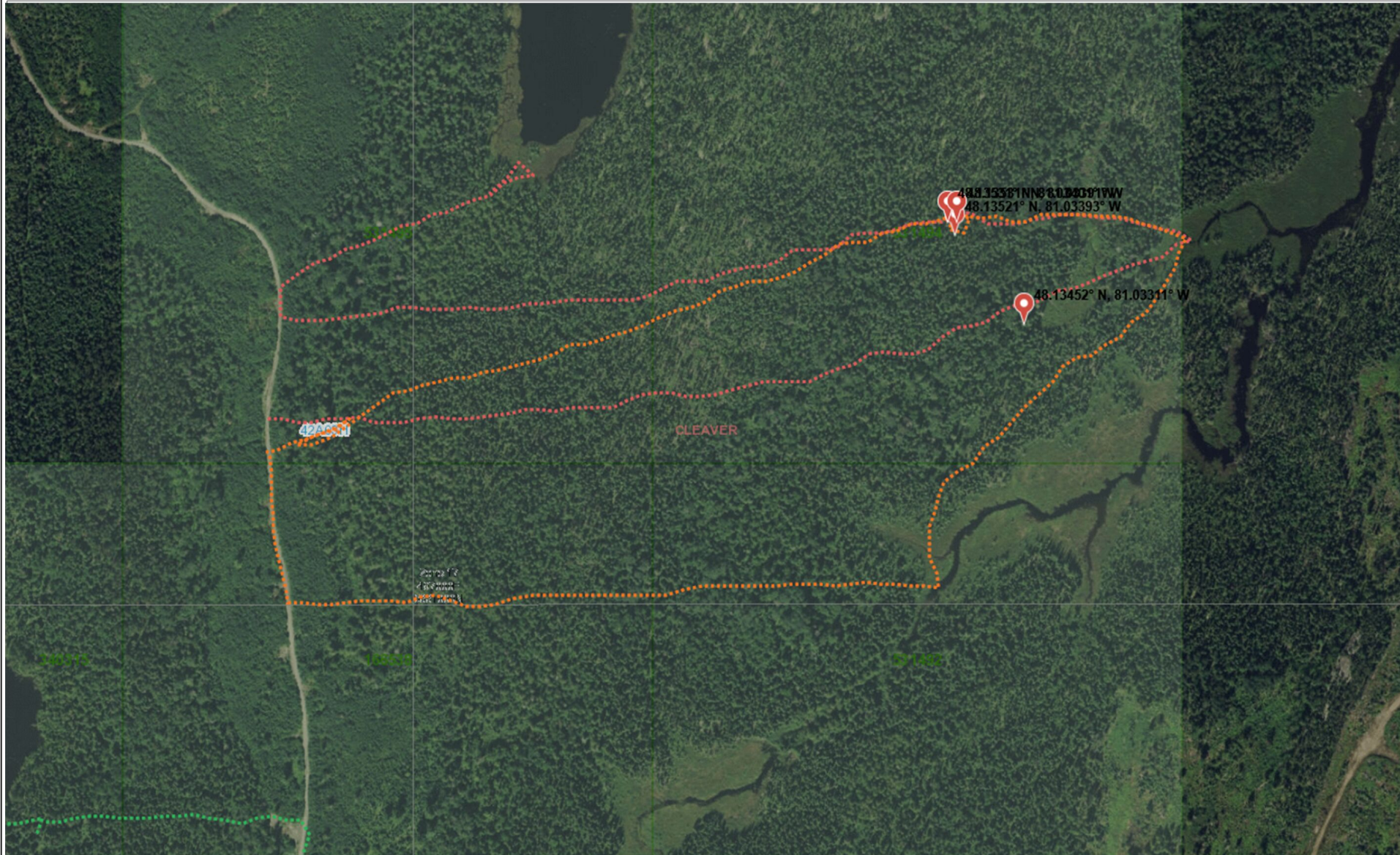


Projection: Web Mercator

The Ontario Ministry of Northern Development and Mines shall not be liable in any way for the use of, or reliance upon, this map or any information on this map. This map should not be used for: navigation, a plan of survey, routes, nor locations.

Imagery Copyright Notices: Ontario Ministry of Natural Resources and Forestry; NASA Landsat Program; First Base Solutions Inc.; Aéro-Photo (1961) Inc.; DigitalGlobe Inc.; U.S. Geological Survey.





Legend

- Provincial Grid Cell**
 - Available
 - Pending
 - Unavailable
- Mining Claim**
 - Mining Claim
 - Boundary Claim
- Alienation**
 - Withdrawal
 - Notice
- ENDM Administrative Boundaries**
 - ENDM Townships and Areas
 - Geographic Lot Fabric
 - UTM Grid 1K
 - UTM Grid 10K
 - Mining Division
 - Mineral Exploration and Development Region
 - CLUPA Protected Area - Far North
 - Resident Geologist District
 - Federal Land Other
 - Native Reserves
- AMIS Sites**
 - AMIS Sites
 - AMIS Features
 - Drill Hole
 - Mineral Occurrences
- MLAS Mining History**
 - Withdrawal - History
 - Notice - History
 - Mining Claim - History
 - Mining Land Tenure - History
 - Legacy Claim
- Provincial Grid**
 - Provincial Grid 250K
 - Provincial Grid 50K
 - Provincial Grid Group
- Land Tenure**
 - Surface Rights
 - Mining Rights
 - Mining and Surface Rights
 - Order-in-Council

0 0.17 km

Projection: Web Mercator



The Ontario Ministry of Northern Development and Mines shall not be liable in any way for the use of, or reliance upon, this map or any information on this map. This map should not be used for: navigation, a plan of survey, routes, nor locations.

Imagery Copyright Notices: Ontario Ministry of Natural Resources and Forestry; NASA Landsat Program; First Base Solutions Inc.; Aéro-Photo (1961) Inc.; DigitalGlobe Inc.; U.S. Geological Survey.





Legend

- Provincial Grid Cell**
 - Available
 - Pending
 - Unavailable
- Mining Claim**
 - Mining Claim
 - Boundary Claim
- Alienation**
 - Withdrawal
 - Notice
- ENDM Administrative Boundaries**
 - ENDM Townships and Areas
 - Geographic Lot Fabric
 - UTM Grid 1K
 - UTM Grid 10K
 - Mining Division
 - Mineral Exploration and Development Region
 - CLUPA Protected Area - Far North
 - Resident Geologist District
 - Federal Land Other
 - Native Reserves
 - AMIS Sites
 - AMIS Features
 - Drill Hole
 - Mineral Occurrences
- MLAS Mining History**
 - Withdrawal - History
 - Notice - History
 - Mining Claim - History
 - Mining Land Tenure - History
 - Legacy Claim
- Provincial Grid**
 - Provincial Grid 250K
 - Provincial Grid 50K
 - Provincial Grid Group
- Land Tenure**
 - Surface Rights
 - Mining Rights
 - Mining and Surface Rights
 - Order-in-Council



Projection: Web Mercator



The Ontario Ministry of Northern Development and Mines shall not be liable in any way for the use of, or reliance upon, this map or any information on this map. This map should not be used for: navigation, a plan of survey, routes, nor locations.

Imagery Copyright Notices: Ontario Ministry of Natural Resources and Forestry; NASA Landsat Program; First Base Solutions Inc.; Aéro-Photo (1961) Inc.; DigitalGlobe Inc.; U.S. Geological Survey.



Work Sheet

Sept 15, 2018 1 day	1
Sept 22, 2018 1 day times 2	2
Oct 13, 2018 1 day times 2	2
June 24, 2019 .25 times 2	.5
June 25, 2019 1 day times 2	2
June 26, 2019 .5 day	.5
July 8, 2019 1 times 2	2
July 9, 2019 .5 day	.5
July 11, 2019 1day	1
July 12, 2019 1 day	1
July 13, 2019 1 day times 2	2
July 16, 2019 .5 day	.5
july 17, 2019 1 day	1
Total work	16 days

travel 92km times 6 = 552 km

Tools

Chainsaw, backpack, camera,GPS, safety equipment, truck, computer and printer.

Sheet1

Cost Type	From Date	To Date	Unit Of Work	Cost/unit	Number of Units	Actual Cost
Prospecting	Sept 15,2018	July 17,2019	day	\$300.00	16	\$4,800.00
Transportation	Sept 15,2018	July 17,2019	km	\$0.50	552	\$276.00
Postage	June 28,2019			\$14.52	1	\$14.52
					Total Costs	\$5,090.52