

We are committed to providing [accessible customer service](#).

If you need accessible formats or communications supports, please [contact us](#).

Nous tenons à améliorer [l'accessibilité des services à la clientèle](#).

Si vous avez besoin de formats accessibles ou d'aide à la communication, veuillez [nous contacter](#).

Assessment Report on the 2017-2018 Prospecting Program
on our Boston Township North Property

Former Staked Claim # 4289260;
Now boundary claim #'s 139659, 159223, and 192285.

Prepared by:
M. Scott Woolhead
Woolhead Contract Exploration Services
305 Corporation Street,
Porcupine, Ontario
P0N1C0

February 18th, 2019.

Summary:

Our Boston North claims are located approximately ten kilometers south of Kirkland Lake following all weather roads to get to the site. Highway 650 transects the northern part of the claim giving easy access to the prospect.

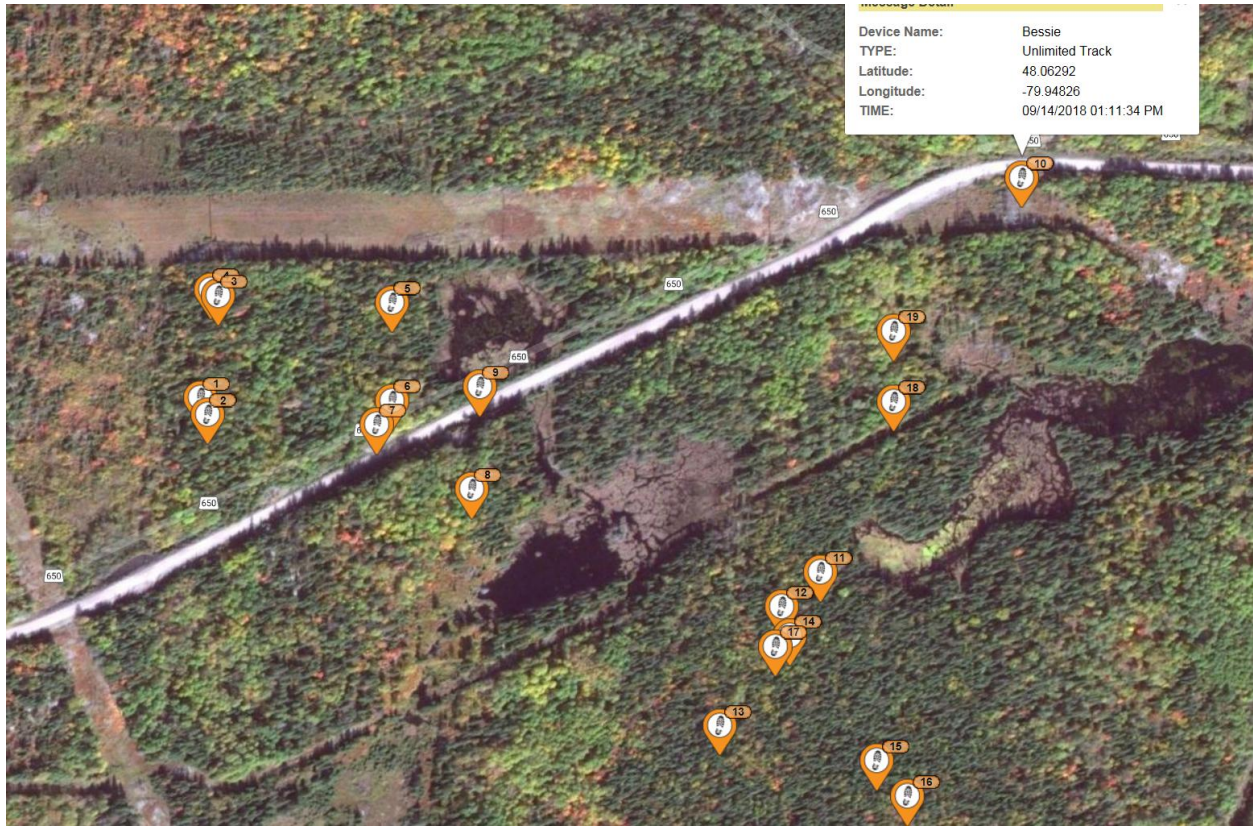
Claim # 4289260 was physically staked on February 20th, 2017. I was attracted to the area by the presence of a massive sulphide showing in a rock cut that had been blasted open when the road (Hwy 650) was previously run through the area; and by the area's proximity to the Adam's mine. I had noticed the showing a couple of years previously on a scouting trip but at that time the area was staked. When I discovered it was open in the winter of 2017, I made plans to stake it.

I made one trip for prospecting along the length of Hwy 650 where it cut through the claim, with special emphasis on the rock cut showing the massive sulphides. That was done on the July 17th 2017. During this trip I had one helper to facilitate the work. A total of nine (9) samples were obtained.

The second trip to the site took place in September of 2018, on the 14th. During the previous winter a local logging enterprise had come in and clear cut a broad swath through the claim. Most of the claim on the north side of the road had been clear-cut, while a large chunk of the ground to the south had been opened up. The clear cut allowed us better access into the property and to discover what was under the groundcover. We did discover a trench which had been blasted years previously. Two samples were taken from the immediate area of the trench. Two further samples were taken from the days prospecting. We felt that there was a dearth of prospective occurrences to sample on the south of the road where we traversed though there were multiple outcrops to survey.

A final total of fourteen (14) rock samples were submitted(131027-131036, and 131083-131086) Samples were submitted on the 12th of February, 2019 to Expert Laboratory in Rouyn-Noranda for Au assaying. Results are pending. All work on the property in 2017 was carried out by Scott Woolhead and Allison Woolhead. In 2018, the workers were Scott Woolhead and Kathleen Woolhead.

Prospecting/survey of Boston township north claim on September 14, 2018.



Our track to the south of the road followed the logging access and exposed outcrop. During our prospecting the trail we took to the south was in the middle of the logged out area. There was no tree cover on our trail when we were there.

There remains a large area to cover in the next prospecting season on the east side of the claim. This can be seen from the vegetative cover in the first picture of our survey. An obvious ridge containing higher elevation and possible outcrops lies south of the easternmost body of water.



This picture is taken at the massive sulphide showing on the north side of the road(577788, 5323704). It cuts across the road (highway 650) (GPS coordinates are (17) 577757, 5323572.), and actually lines up with the trench with the massive sulphides shown later in the pictures. Sample # 9b was taken from here.



Sample 10 taken from the edge of the new trench prospected on September 14th, 2018. Rusty with pyrite within the rock.



Sample # 12., 2 % pyrite, copper staining, fine grained volcanics.



Sample # 13. Pyrite cubes on rock, 1 % pyrite, rusty.

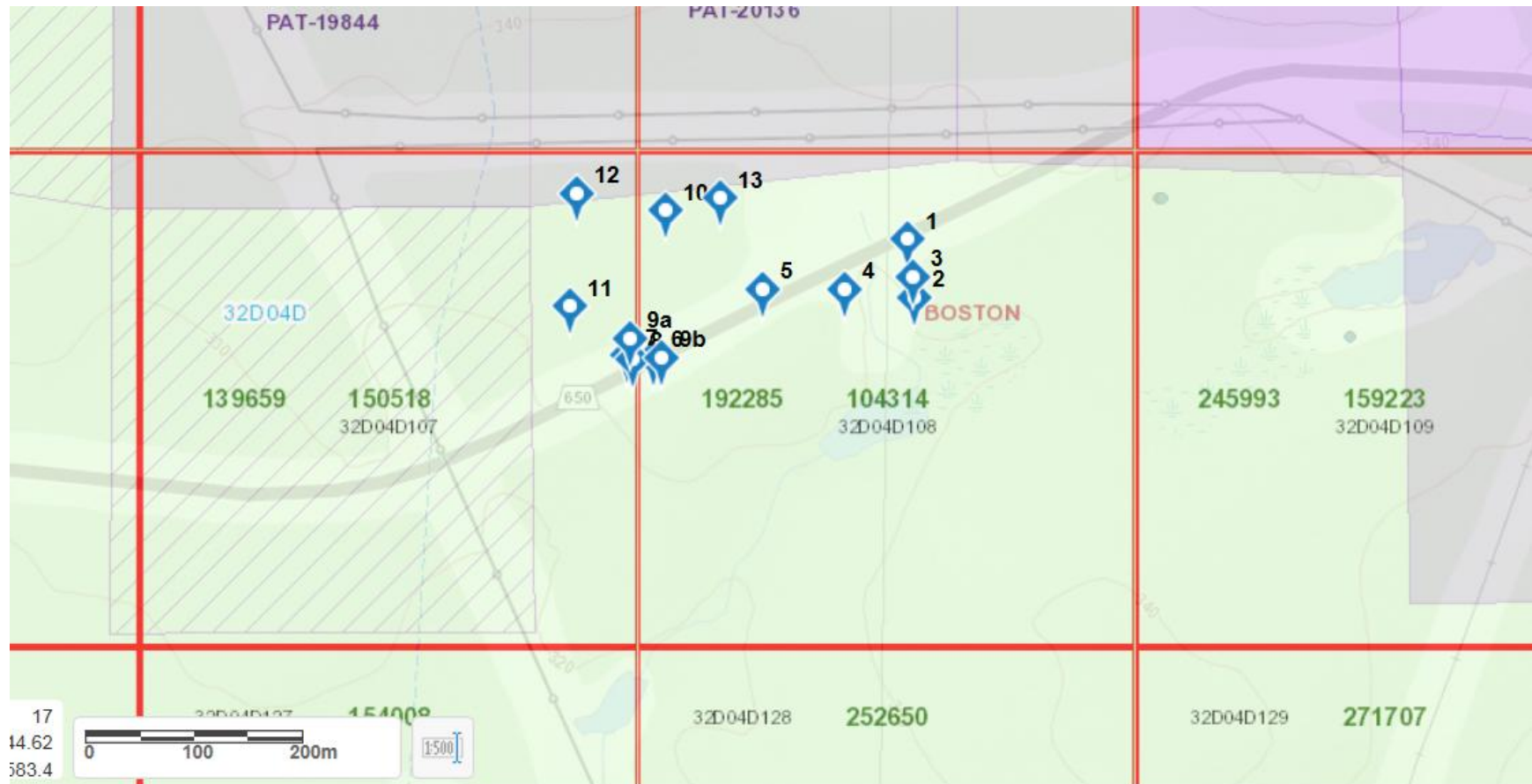


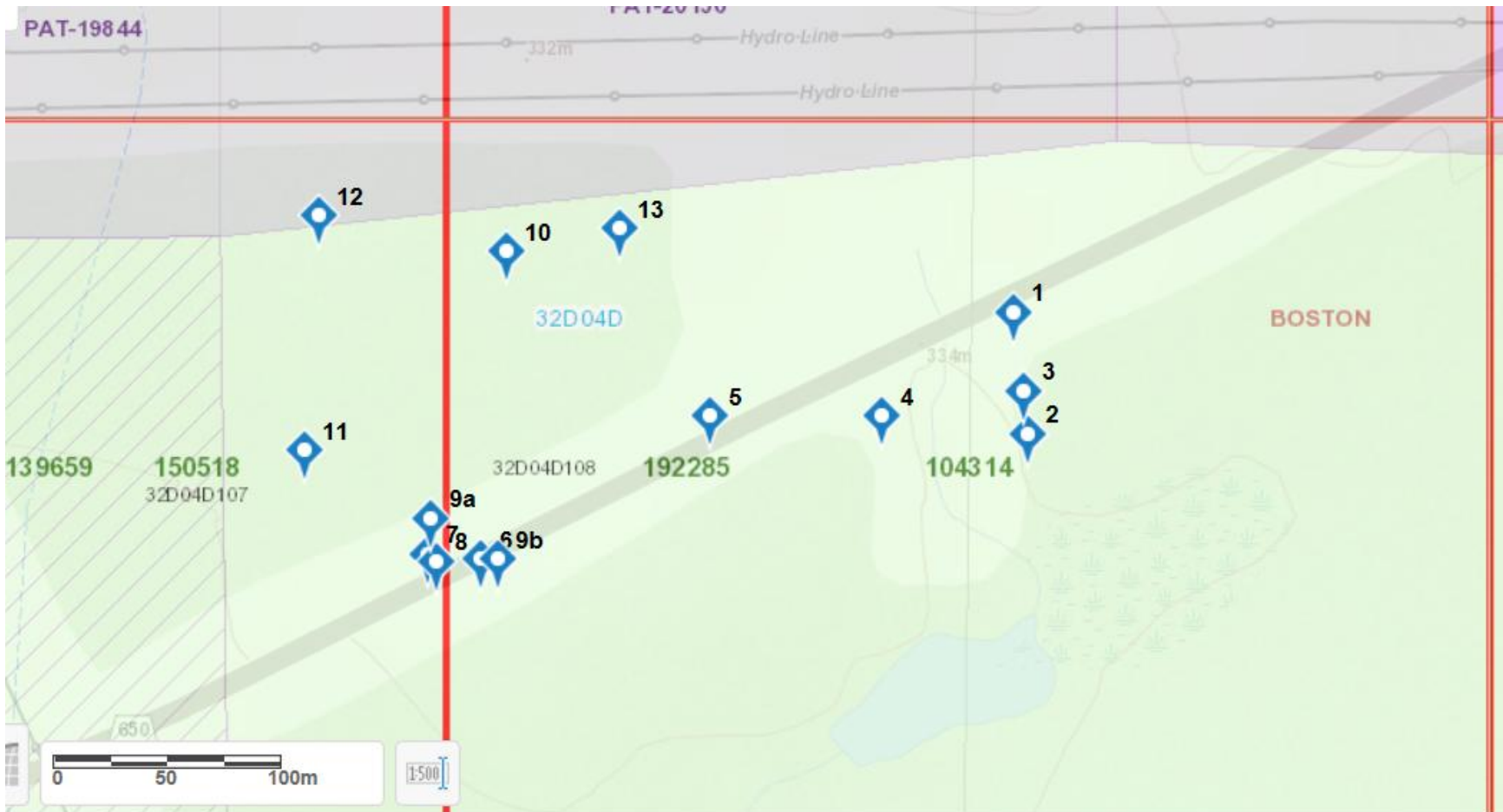
This trench was blasted in the rock many years ago and is located at (17) 577702, 5323625. It measures roughly 2m x2mx2m. The harvesting of lumber on the claim readily exposed it to our prospecting. Two samples were taken from here – one from the wall of the trench itself (sample 10) and one gathered from the waste rock in front of the pile (# 11). The picture is taken from the south of the trench. This trench is in line with the faulting shown at the rock cut on the road shown previously.

Samples and their location:

1	Tag #131027	578019, 5323688	chalco, pyrite, qv
2	131028	578026, 5323634	py, fine grained
3	131029	578024, 5323653	fine grained, py, chalco
4	131030	577961, 5323641	Fine grained volcanic, * purple hue
5	131031	577883, 5323641	massive sulphide vein
6	131032	577782, 5323574	south side of road sulphides
7	131033	577759, 5323577	north side of rd, sulph., harder
8	131034	577760, 5323574	footwall of sample 7
9a	131035	577759, 5323577	crumbly vein material
9b	131036	577788, 5323574	Massive sulphide intercept in rock cut, high pyrite count.
10	131083	577793, 5323712	Chalcopyrite, pyrite speckles with rusty hue on exposed side
11	131084	577703, 5323622	Waste pile sulphides with copper staining
12	131085	577708, 5323727	2% pyrite, fine grained volcanic.
13	131086	577842, 5323724	Pyrite cubes in sample and on rock outcrop, 1% pyrite.

Revised map of Boston township north claims (2 views):





Old trench is located at position # 11, and was uncovered by logging operations in the winter of 2017-2018..

***** Certificate of analysis *****

Laboratoire Expert Inc.

750 A rue Saguenay
Rouyn-Noranda, Québec
Canada, J9X 7B5
Telephone : (819) 762-7100, Fax : (819) 762-7510

Date : 2019/02/21

Page : 1 of 1

Client : Scott Woolhead Exploration	
Addressee : Scott Woolhead 305 Corporation Street Porcupine Ontario P0N 1C0 Telephone : (705) 235-5524	Folder : 53977 Your order number : Project : BOSTON-NORTH Total number of samples : 13

<u>Designation</u>	Au FA-GEO ppb 5	Au-Dup FA-GEO ppb 5
131028	8	6
131029	7	
131030	<5	
131031	<5	
131032	<5	
131033	<5	
131034	<5	
131035	52	
131083	13	
131084	15	
131085	<5	
131086	10	
200921	6	5



Joe Landers, Manager