

We are committed to providing [accessible customer service](#).

If you need accessible formats or communications supports, please [contact us](#).

Nous tenons à améliorer [l'accessibilité des services à la clientèle](#).

Si vous avez besoin de formats accessibles ou d'aide à la communication, veuillez [nous contacter](#).

**Report On
Drill Core Analysis
Hyman Township
For
Skead Holdings Ltd.
By
R.A. MacGregor, P. Eng.
March 25, 2021**

Summary

Drill core from holes drilled in 2007-2008 was located, piled outdoors on private land, moved to a secure location and is being cataloged and sampled.

Location and Access

The Hyman Township property consists of the former Agnew Lake mine in the north central part of the township. Hyman Township is located approximately 80 km west of Sudbury and 20 km north-east of Espanola, Ontario. It can be accessed from Hwy. 17 by paved and gravel roads. A good paved road goes right to the former Agnew Lake mine from the High Falls road.

Previous Exploration

The property was first discovered in the 1950's and considerable drilling done. It was further explored by Kerr-Addison Mines in the 1970's and operated as a producing uranium mine from 1978 to 1983. There is reported to be a 950 metre deep six compartment shaft as well as a decline to the 580 metre level. There are reported uranium resources which are not 43-101 compliant. Further drilling and surface stripping was carried out by Ursa Major in 2007, followed by a major drilling program by Nyah in 2007 to 2008.

Work Program

Split drill core from recovered drill core boxes was placed in marked plastic bags after noting original sample numbers, drill hole number and sample interval. Samples were transported to Swastika Labs for sample preparation. Pulps were recovered from Swastika Labs and 30-40 gram split of the pulp placed in marked paper envelopes and sent to Bureau Veritas Labs in Vancouver for analysis. Analysis was carried out by ICP-ES/MS with dissolution by 4-acids for 45 elements or decomposition by lithium borate fusion for rare earth and alkali elements.

Results

Assays are being compiled together with previous analyses and further sampling.

Table 1

Sample Intervals

10

NA07-05

Sample No.	Interval (m)	IMA No.	REE No.	Lithology
534	228.0 – 213.0		327	Quartzite

NA07-06

34342	250.5 – 251.5	2890		Qtz. pebble Congl.
34341	251.5 – 252.5	2889		Qtz. pebble Congl.
34340	252.5 – 253.5	2888		Qtz. pebble Congl.
34331	253.5 – 254.0	2881	292	Qtz. pebble Congl.
34332	254.0 – 255.0	2898	293	Qtz. pebble Congl.
34333	255.0 – 256.0	2899	294	Qtz. pebble Congl.
34334	256.0 – 257.0	2900	296	Qtz. pebble Congl.
34335	257.0 – 258.0	2901	297	Qtz. pebble Congl.
34336	258.0 – 259.0	2880		Qtz. pebble Congl.
34337	259.0 – 260.0	2885		Qtz. pebble Congl.
34338	260.0 – 261.0	2886		Qtz. pebble Congl.
34339	261.0 – 261.5	2887		Conglomerate

NA07-07

176612	216.0 – 217.0		344	Qtz. pebble Congl.
--------	---------------	--	-----	--------------------

NA07-08

49886	212.0 – 213.0		288	Conglomerate
49889	215.0 – 216.0		298	Conglomerate

NA07-09

Sample No.	Interval (m)	IMA No.	REE No.	Lithology
176836	81.0 – 82.0		319	Conglomerate
176837	82.0 – 83.0		305	Conglomerate
176839	137.0 – 138.0		308	Conglomerate
176844	139.5 – 140.0		291	Conglomerate
176845	140.0 – 140.5		290	Conglomerate
176846	140.5 – 141.5		295	Conglomerate
176847	141.5 – 142.0		312	Conglomerate
176848	142.0 – 143.0		313	Conglomerate
176851	144.0 – 144.5		357	Conglomerate
176853	145.5 – 146.0		352	Conglomerate
176854	154.0 – 154.5		353	Conglomerate
176855	154.5 – 155.5		354	Conglomerate
176906	268.5 – 269.0		310	Conglomerate
176907	269.0 – 270.0		287	Conglomerate
176908	270.0 – 271.0		304	Conglomerate
176912	274.0 – 275.0		309	Conglomerate
176914	277.0 – 278.0		316	Conglomerate
176915	278.0 – 279.0		314	Conglomerate
176916	279.0 – 280.0		307	Conglomerate
176934	reject, core box missing		311	

NA07-14

49846	364.0 – 365.0		362	Conglomerate
49847	365.0 – 366.0		363	Conglomerate
49885	369.0 – 370.0		351	Co

NA08-16

Sample No.	Interval (m)	IMA No.	REE No.	Lithology
158220	Blank	2927		

NA08-17

49891	360.0 – 361.0		299	Conglomerate
49892	361.0 – 362.0		300	Conglomerate
49894	363.0 – 364.0		301	Conglomerate
49895	364.0 – 365.0		302	Conglomerate
49896	365.0 – 366.0		303	Conglomerate
49897	366.0 – 367.0		365	Conglomerate
49898	367.0 – 368.0		364	Conglomerate

NA08-19

34350	316.0 – 317.0	3004		Conglomerate
34349	317.0 – 318.0	3003		Conglomerate

NA08-20

242055	329.0 – 330.0		345	Qtz. Pebble Congl.
242057	331.0 – 332.0	2962		Feld. Congl.
242060	334.0 – 335.0		306	Conglomerate
242068	342.0 – 343.0		346	Conglomerate

NA08-21

Sample No.	Interval (m)	IMA No.	REE No.	Lithology
242471	304.0 – 305.0	2936		Conglomerate

U07-15

85715	37.95 – 38.95	2907		Argillite
-------	---------------	------	--	-----------

U07-16

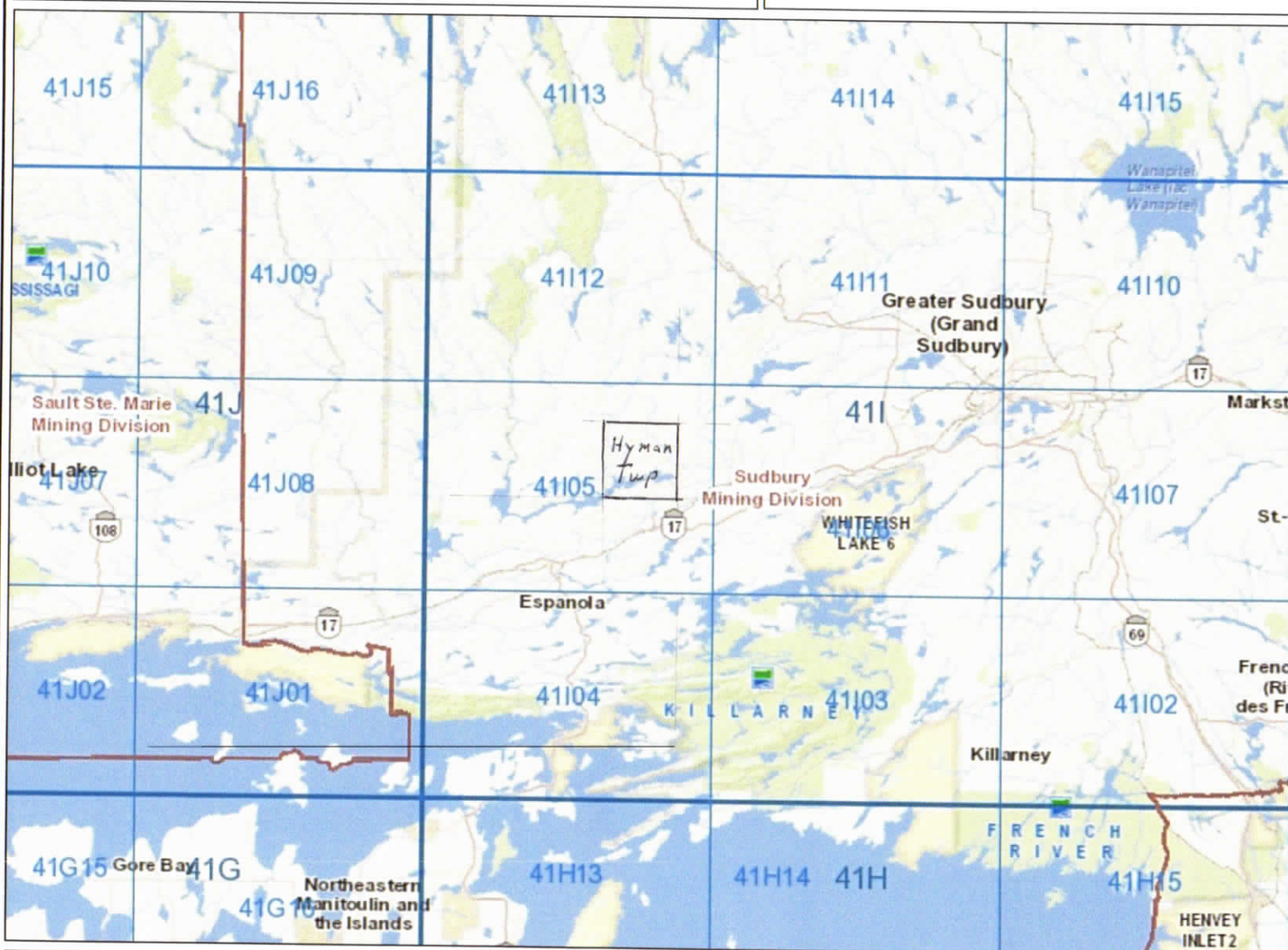
85714	24.05 – 25.05	2906		Argillite
85712	28.40 – 29.00	2905		Argillite
85713	29.00 – 29.50	3005		Argillite
85724	45.40 – 46.00	3006		Argill. Sands. Gwk.
85722	46.68 – 47.55	2911		Argill. Sands. Gwk.
85718	55.30 – 56.00	2909		Argillite
34348	132.20 – 132.68	2920		Argill. Sands. Gwk.
34347	144.8 – 145.85	2919		Argill. Sands. Gwk

U07-17

Sample No.	Interval (m)	IMA No.	REE No.	Lithology
85726	30.30 – 31.45	2912		Argill. Sands. Gwk.
85721	39.10 – 39.75	2910		Argill. Sands. Gwk.
85727	53.75 – 54.75	2913		Argillite
85728	54.75 – 55.75	2914		Argillite
34344	127.90 – 128.70	2916		Argill. Sands.
34343	131.65 – 132.53	2915		Quartzite
34345	132.53 – 133.50	2917		Argill. Sands.
34346	133.50 – 134.40	2918		Argill. Sands.
85717	163.50 – 164.02	3007		Granite
85716	166.10 – 167.00	2908		Granite
85741	170.64 – 171.32	3009		Mafic Vol.
85744	190.93 – 191.80	2997		Pebbly Qtz.
85750	191.80 – 192.80	3008		Pebbly Qtz.
85749	192.80 – 193.80	3002		Pebbly Qtz.
85742	193.80 – 194.80	2995		Pebbly Qtz.
85743	194.80 – 195.80	2996		Pebbly Qtz.
85745	196.80 – 197.80	2998		Pebbly Qtz.
85746	197.80 – 198.80	2999		Pebbly Qtz.
85747	198.80 – 199.50	3000		Pebbly Qtz.
85748	199.50 – 200.50	3001	409	Pebbly Qtz.

Appendix I

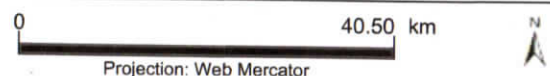
Maps



Legend

- Provincial Grid Cell**
 - Available
 - Pending
 - Unavailable
- Mining Claim**
 - Mining Claim
 - Boundary Claim
- Alienation**
 - Withdrawal
 - Notice
- ENDM Administrative Boundaries**
 - ENDM Townships and Areas
 - Geographic Lot Fabric
 - UTM Grid 1K
 - UTM Grid 10K
 - Mining Division
 - Mineral Exploration and Development Region
 - CLUPA Protected Area - Far North
 - Resident Geologist District
 - Federal Land Other
 - Native Reserves
- AMIS Sites**
 - AMIS Sites
 - AMIS Features
 - Drill Hole
 - Mineral Occurrences
- MLAS Mining History**
 - Withdrawal - History
 - Notice - History
 - Mining Claim - History
 - Mining Land Tenure - History
 - Legacy Claim
- Provincial Grid**
 - Provincial Grid 250K
 - Provincial Grid 50K
 - Provincial Grid Group
- Land Tenure**
 - Surface Rights
 - Mining Rights
 - Mining and Surface Rights
 - Order-in-Council

Those wishing to register mining claims should consult with the Provincial Mining Recorders' Office of the Ministry of Energy, Northern Development and Mines for additional information on the status of the lands shown hereon. This map is not intended for navigational, survey, or land title determination purposes as the information shown on this map is compiled from various sources. Completeness and accuracy are not guaranteed. Additional information may also be obtained through the local Land Titles or Registry Office, or the Ministry of Natural Resources and Forestry. The information shown is derived from digital data available in the Provincial Mining Recorders' Office at the time of downloading from the Ministry of Energy, Northern Development and Mines web site.



Imagery Copyright Notices: Ontario Ministry of Natural Resources and Forestry; NASA Landsat Program; First Base Solutions Inc.; Aéro-Photo (1961) Inc.; DigitalGlobe Inc.; U.S. Geological Survey.
© Queen's Printer for Ontario, 2021

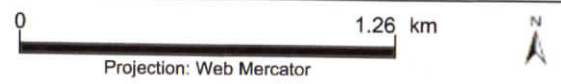


620842 41105J258	620843 41105J258	620844 41105J259	620845 41105J260	620810 41105I241	620811 41105I242	620812 41105I243	620813 41105I244	620814 41105I245	609810 41105I246	609807 41105I247	609804
620853 41105J278	620854 41105J278	620855 41105J279	620856 41105J280	620815 41105I261	620816 41105I262	620817 41105I263	620818 41105I264	223671 41105I265	230945 41105I266	223670 41105I267	568115
620914 41105J298	620915 41105J299	620916 41105J299	620917 41105J300	620819 41105I281	620820 41105I282	620821 41105I283	620822 41105I284	620823 41105I285	568116 41105I286	1019786 41105I287	09815
620925 41105J318	620926 41105J318	620927 41105J319	191799 41105J320	258376 41105I301	175784 41105I302	276901 279677	41105I303 212146 41105I304	164258 41105I305	326762 41105I306	2781686 41105I307	09820
555649 HYMAN 41105J338	218828 41105J338	218827 41105J339	128385 41105J340	191800 41105I321	156341 41105I322	276902 41105I323	545513 41105I324	547645 41105I325	547646 41105I326	547647 41105I327	583298
555647 41105J358	125469 41105J358	182678 41105J359	276903 41105J360	162422 41105I341	156342 41105I342	288444 41105I343	545514 41105I344	547648 41105I345	583098 41105I346	6207846 41105I347	20785
555645 41105J378	125470 41105J378	218829 41105J379	102364 41105J380	258377 41105I361	191801 41105I362	295766 41105I363	545515 41105I364	547649 41105I365	583089 41105I366	583090 41105I367	620787
186738 253505	201609 41105J398	142958 41105J399	229173 41105J400	128386 41105I381	191802 41105I382	288445 41105I383	545516 41105I384	545517 41105I385	545518 41105I386	583091 41105I387	583092
253544	41105G018 518479	41105G019 518480	41105G020 518481	41105H001 518482	41105H002 518483	41105H003 518484	41105H004 525766	41105H005 525767	41105H006 525768	41105H007 583093	583094

Legend

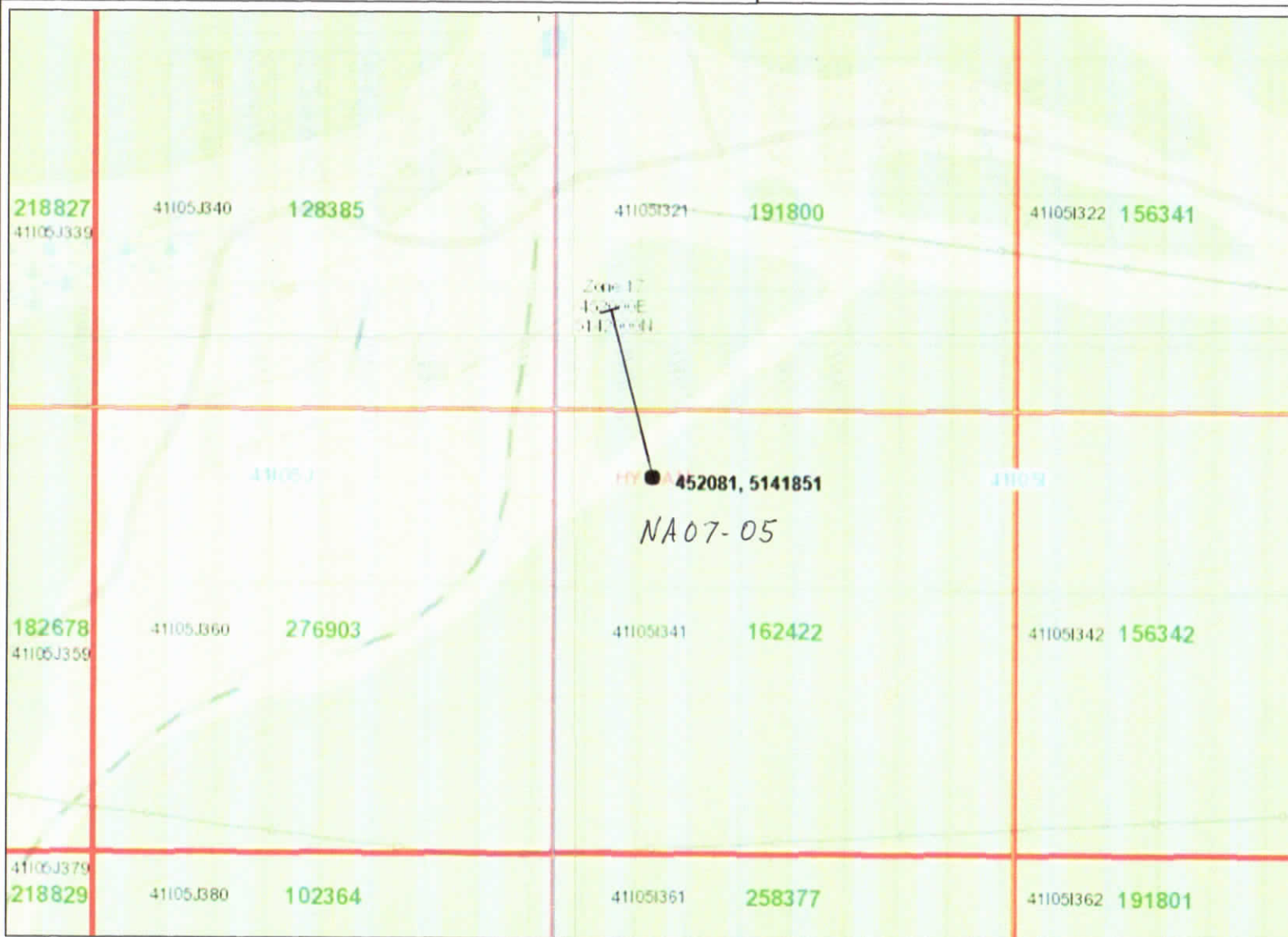
- Provincial Grid Cell**
 - Available
 - Pending
 - Unavailable
- Mining Claim**
 - Mining Claim
 - Boundary Claim
- Alienation**
 - Withdrawal
 - Notice
- ENDM Administrative Boundaries**
 - ENDM Townships and Areas
 - Geographic Lot Fabric
 - UTM Grid 1K
 - UTM Grid 10K
 - Mining Division
 - Mineral Exploration and Development Region
 - CLUPA Protected Area - Far North
 - Resident Geologist District
 - Federal Land Other
 - Native Reserves
- AMIS Sites**
 - AMIS Sites
 - AMIS Features
 - Drill Hole
 - Mineral Occurrences
- MLAS Mining History**
 - Withdrawal - History
 - Notice - History
 - Mining Claim - History
 - Mining Land Tenure - History
 - Legacy Claim
- Provincial Grid**
 - Provincial Grid 250K
 - Provincial Grid 50K
 - Provincial Grid Group
- Land Tenure**
 - Surface Rights
 - Mining Rights
 - Mining and Surface Rights
 - Order-in-Council

Those wishing to register mining claims should consult with the Provincial Mining Recorders' Office of the Ministry of Energy, Northern Development and Mines for additional information on the status of the lands shown hereon. This map is not intended for navigational, survey, or land title determination purposes as the information shown on this map is compiled from various sources. Completeness and accuracy are not guaranteed. Additional information may also be obtained through the local Land Titles or Registry Office, or the Ministry of Natural Resources and Forestry. The information shown is derived from digital data available in the Provincial Mining Recorders' Office at the time of downloading from the Ministry of Energy, Northern Development and Mines web site.



Imagery Copyright Notices: Ontario Ministry of Natural Resources and Forestry; NASA Landsat Program; First Base Solutions Inc.; Aéro-Photo (1961) Inc.; DigitalGlobe Inc.; U.S. Geological Survey.
© Queen's Printer for Ontario, 2021





Legend

- Provincial Grid Cell**
 - Available
 - Pending
 - Unavailable
- Mining Claim**
 - Mining Claim
 - Boundary Claim
- Alienation**
 - Withdrawal
 - Notice
- ENDM Administrative Boundaries**
 - ENDM Townships and Areas
 - Geographic Lot Fabric
 - UTM Grid 1K
 - UTM Grid 10K
 - Mining Division
 - Mineral Exploration and Development Region
 - CLUPA Protected Area - Far North
 - Resident Geologist District
- Other**
 - Federal Land Other
 - Native Reserves
 - AMIS Sites
 - AMIS Features
 - Drill Hole
 - Mineral Occurrences
- MLAS Mining History**
 - Withdrawal - History
 - Notice - History
 - Mining Claim - History
 - Mining Land Tenure - History
 - Legacy Claim
- Provincial Grid**
 - Provincial Grid 250K
 - Provincial Grid 50K
 - Provincial Grid Group
- Land Tenure**
 - Surface Rights
 - Mining Rights
 - Mining and Surface Rights
 - Order-in-Council



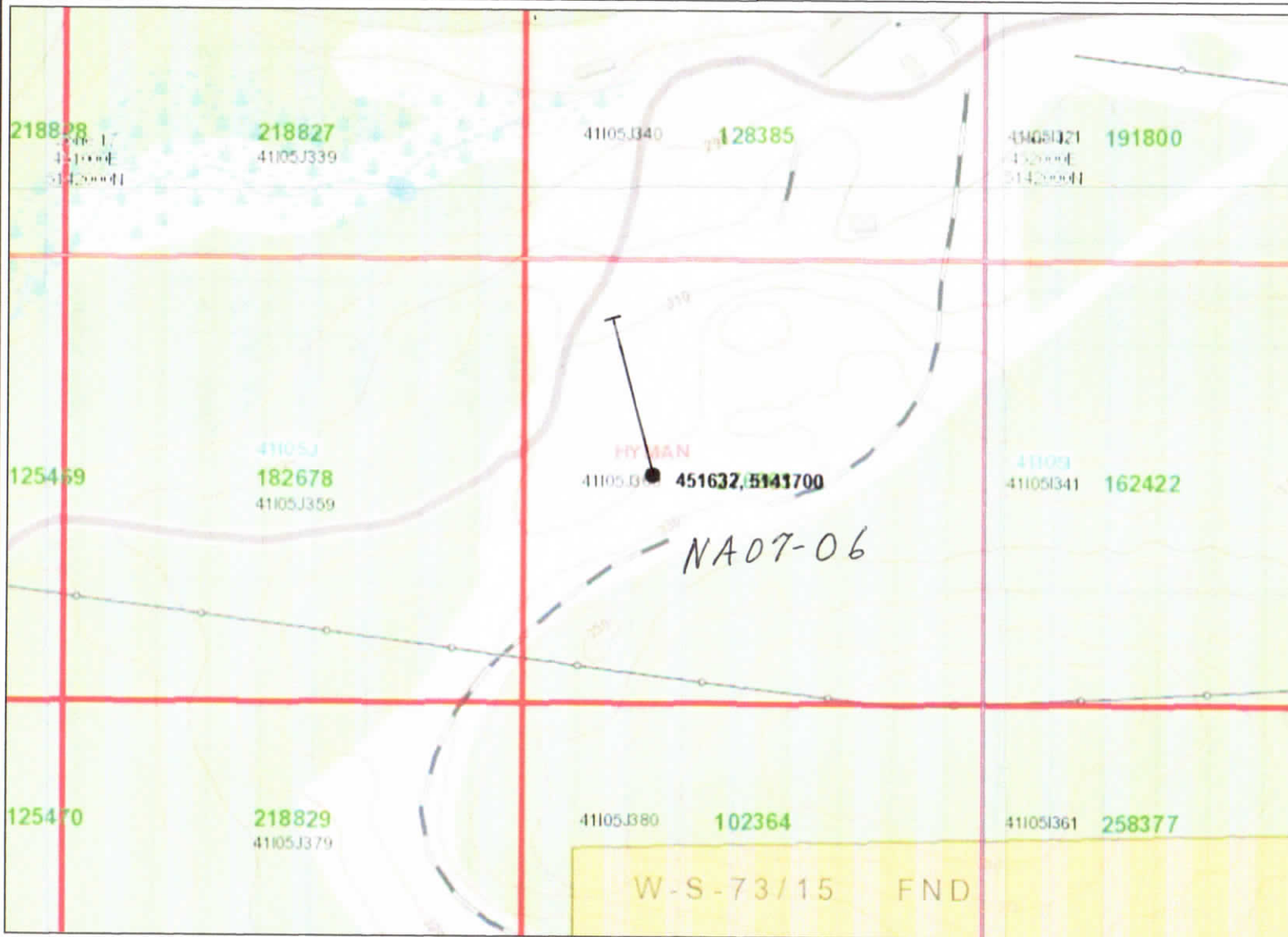
Projection: Web Mercator



The Ontario Ministry of Northern Development and Mines shall not be liable in any way for the use of, or reliance upon, this map or any information on this map. This map should not be used for: navigation, a plan of survey, routes, nor locations.

Imagery Copyright Notices: Ontario Ministry of Natural Resources and Forestry; NASA Landsat Program; First Base Solutions Inc.; Aéro-Photo (1961) Inc.; DigitalGlobe Inc.; U.S. Geological Survey.





- ### Legend
- Provincial Grid Cell**
 - Available
 - Pending
 - Unavailable
 - Mining Claim**
 - Mining Claim
 - Boundary Claim
 - Alienation**
 - Withdrawal
 - Notice
 - ENDM Administrative Boundaries**
 - ENDM Townships and Areas
 - Geographic Lot Fabric
 - UTM Grid 1K
 - UTM Grid 10K
 - Mining Division
 - Mineral Exploration and Development Region
 - CLUPA Protected Area - Far North
 - Resident Geologist District
 - Federal Land Other
 - Native Reserves
 - AMIS Sites**
 - AMIS Sites
 - AMIS Features
 - Drill Hole
 - Mineral Occurrences**
 - MLAS Mining History**
 - Withdrawal - History
 - Notice - History
 - Mining Claim - History
 - Mining Land Tenure - History
 - Legacy Claim
 - Provincial Grid**
 - Provincial Grid 250K
 - Provincial Grid 50K
 - Provincial Grid Group
 - Land Tenure**
 - Surface Rights
 - Mining Rights
 - Mining and Surface Rights
 - Order-in-Council



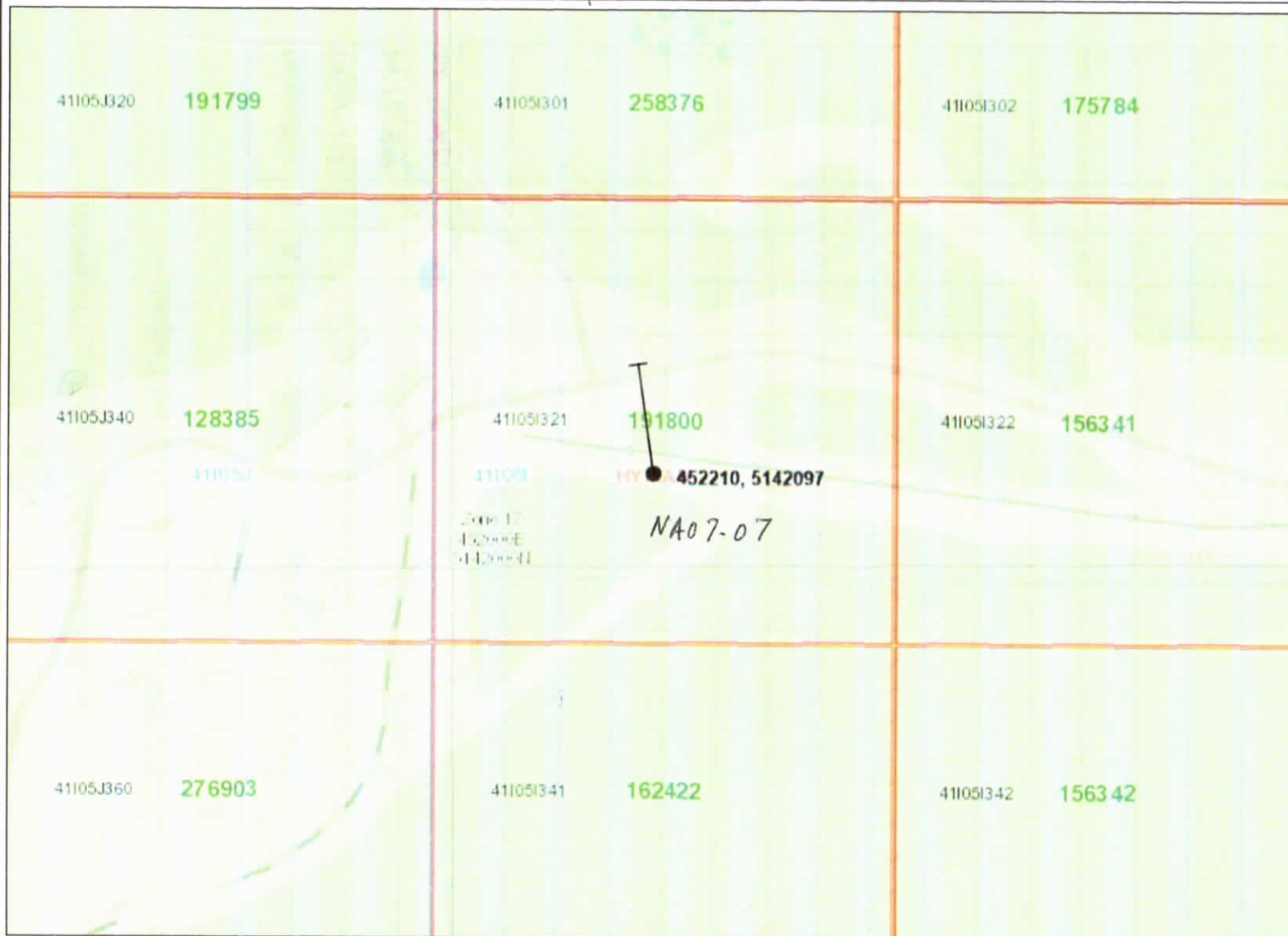
Projection: Web Mercator



The Ontario Ministry of Northern Development and Mines shall not be liable in any way for the use of, or reliance upon, this map or any information on this map. This map should not be used for: navigation, a plan of survey, routes, nor locations.

Imagery Copyright Notices: Ontario Ministry of Natural Resources and Forestry; NASA Landsat Program; First Base Solutions Inc.; Aéro-Photo (1961) Inc.; DigitalGlobe Inc.; U.S. Geological Survey.





Legend

- Provincial Grid Cell**
 - Available
 - Pending
 - Unavailable
- Mining Claim**
 - Mining Claim
 - Boundary Claim
- Alienation**
 - Withdrawal
 - Notice
- ENDM Administrative Boundaries**
 - ENDM Townships and Areas
 - Geographic Lot Fabric
 - UTM Grid 1K
 - UTM Grid 10K
 - Mining Division
 - Mineral Exploration and Development Region
 - CLUPA Protected Area - Far North
 - Resident Geologist District
 - Federal Land Other
 - Native Reserves
- AMIS Sites**
 - AMIS Sites
 - AMIS Features
 - Drill Hole
- Mineral Occurrences**
- MLAS Mining History**
 - Withdrawal - History
 - Notice - History
 - Mining Claim - History
 - Mining Land Tenure - History
 - Legacy Claim
- Provincial Grid**
 - Provincial Grid 250K
 - Provincial Grid 50K
 - Provincial Grid Group
- Land Tenure**
 - Surface Rights
 - Mining Rights
 - Mining and Surface Rights
 - Order-in-Council



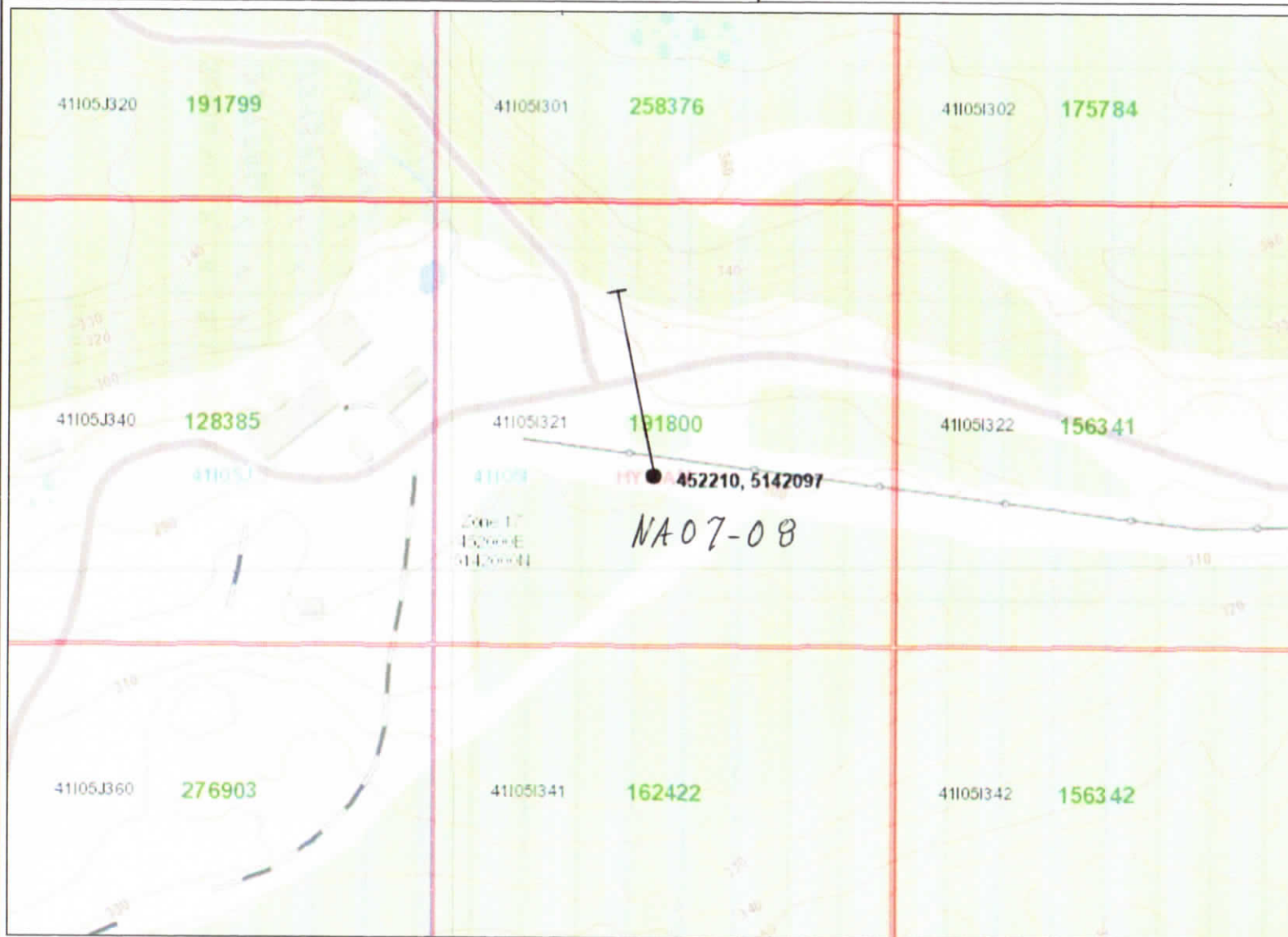
Projection: Web Mercator



The Ontario Ministry of Northern Development and Mines shall not be liable in any way for the use of, or reliance upon, this map or any information on this map. This map should not be used for: navigation, a plan of survey, routes, nor locations.

Imagery Copyright Notices: Ontario Ministry of Natural Resources and Forestry; NASA Landsat Program; First Base Solutions Inc.; Aéro-Photo (1961) Inc.; DigitalGlobe Inc.; U.S. Geological Survey.





- ### Legend
- Provincial Grid Cell**
 - Available
 - Pending
 - Unavailable
 - Mining Claim**
 - Mining Claim
 - Boundary Claim
 - Alienation**
 - Withdrawal
 - Notice
 - ENDM Administrative Boundaries**
 - ENDM Townships and Areas
 - Geographic Lot Fabric
 - UTM Grid 1K
 - UTM Grid 10K
 - Mining Division
 - Mineral Exploration and Development Region
 - CLUPA Protected Area - Far North
 - Resident Geologist District
 - Federal Land Other**
 - Native Reserves
 - AMIS Sites**
 - AMIS Sites
 - AMIS Features
 - Drill Hole
 - Mineral Occurrences**
 - MLAS Mining History**
 - Withdrawal - History
 - Notice - History
 - Mining Claim - History
 - Mining Land Tenure - History
 - Legacy Claim
 - Provincial Grid**
 - Provincial Grid 250K
 - Provincial Grid 50K
 - Provincial Grid Group
 - Land Tenure**
 - Surface Rights
 - Mining Rights
 - Mining and Surface Rights
 - Order-in-Council



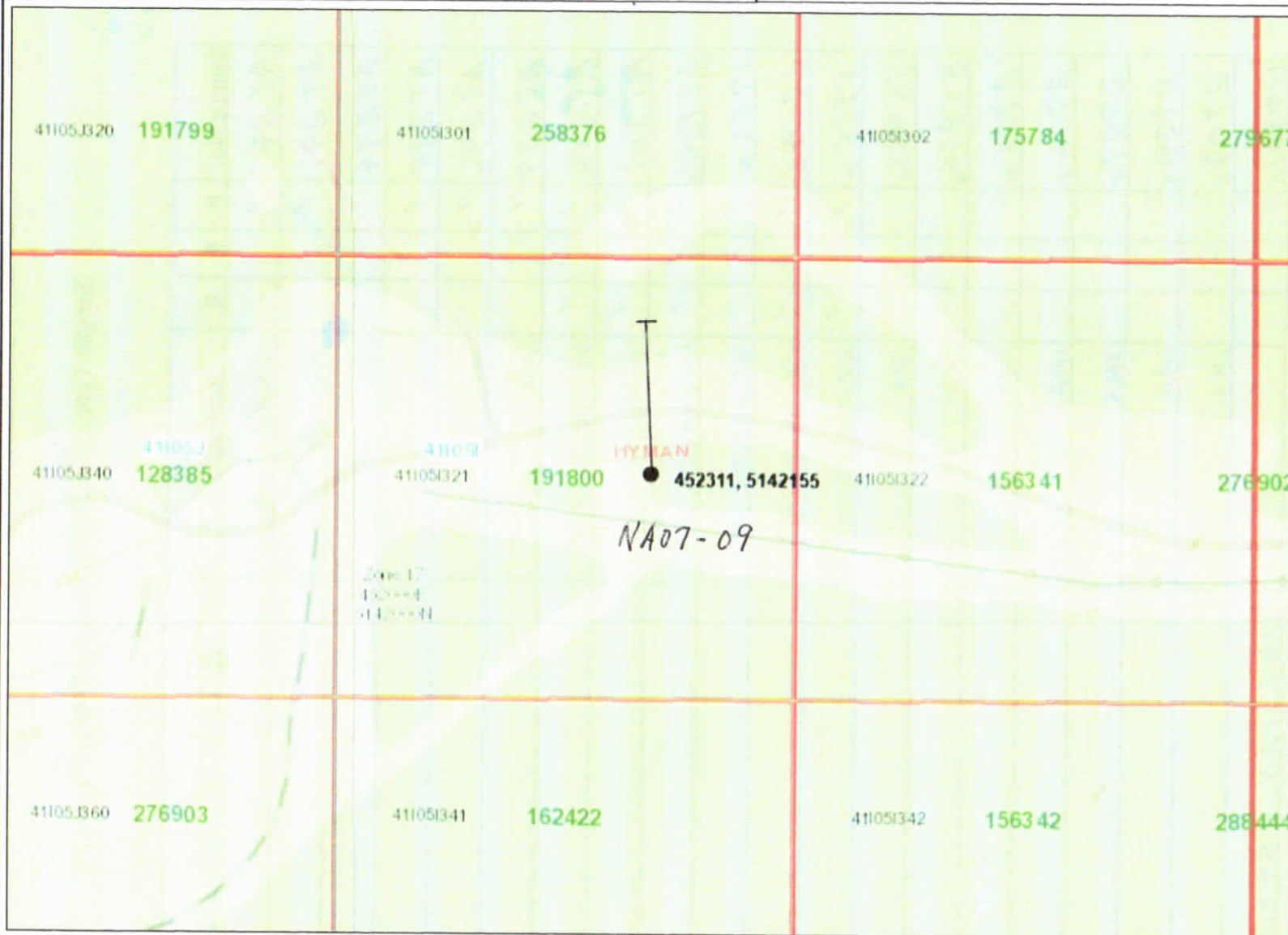
Projection: Web Mercator



The Ontario Ministry of Northern Development and Mines shall not be liable in any way for the use of, or reliance upon, this map or any information on this map. This map should not be used for: navigation, a plan of survey, routes, nor locations.

Imagery Copyright Notices: Ontario Ministry of Natural Resources and Forestry; NASA Landsat Program; First Base Solutions Inc.; Aéro-Photo (1961) Inc.; DigitalGlobe Inc.; U.S. Geological Survey.





Legend

- Provincial Grid Cell**
 - Available
 - Pending
 - Unavailable
- Mining Claim**
 - Mining Claim
 - Boundary Claim
- Alienation**
 - Withdrawal
 - Notice
- ENDM Administrative Boundaries**
 - ENDM Townships and Areas
 - Geographic Lot Fabric
 - UTM Grid 1K
 - UTM Grid 10K
 - Mining Division
 - Mineral Exploration and Development Region
 - CLUPA Protected Area - Far North
 - Resident Geologist District
- Federal Land Other**
 - Native Reserves
 - AMIS Sites
 - AMIS Features
 - Drill Hole
 - Mineral Occurrences
- MLAS Mining History**
 - Withdrawal - History
 - Notice - History
 - Mining Claim - History
 - Mining Land Tenure - History
 - Legacy Claim
- Provincial Grid**
 - Provincial Grid 250K
 - Provincial Grid 50K
 - Provincial Grid Group
- Land Tenure**
 - Surface Rights
 - Mining Rights
 - Mining and Surface Rights
 - Order-in-Council



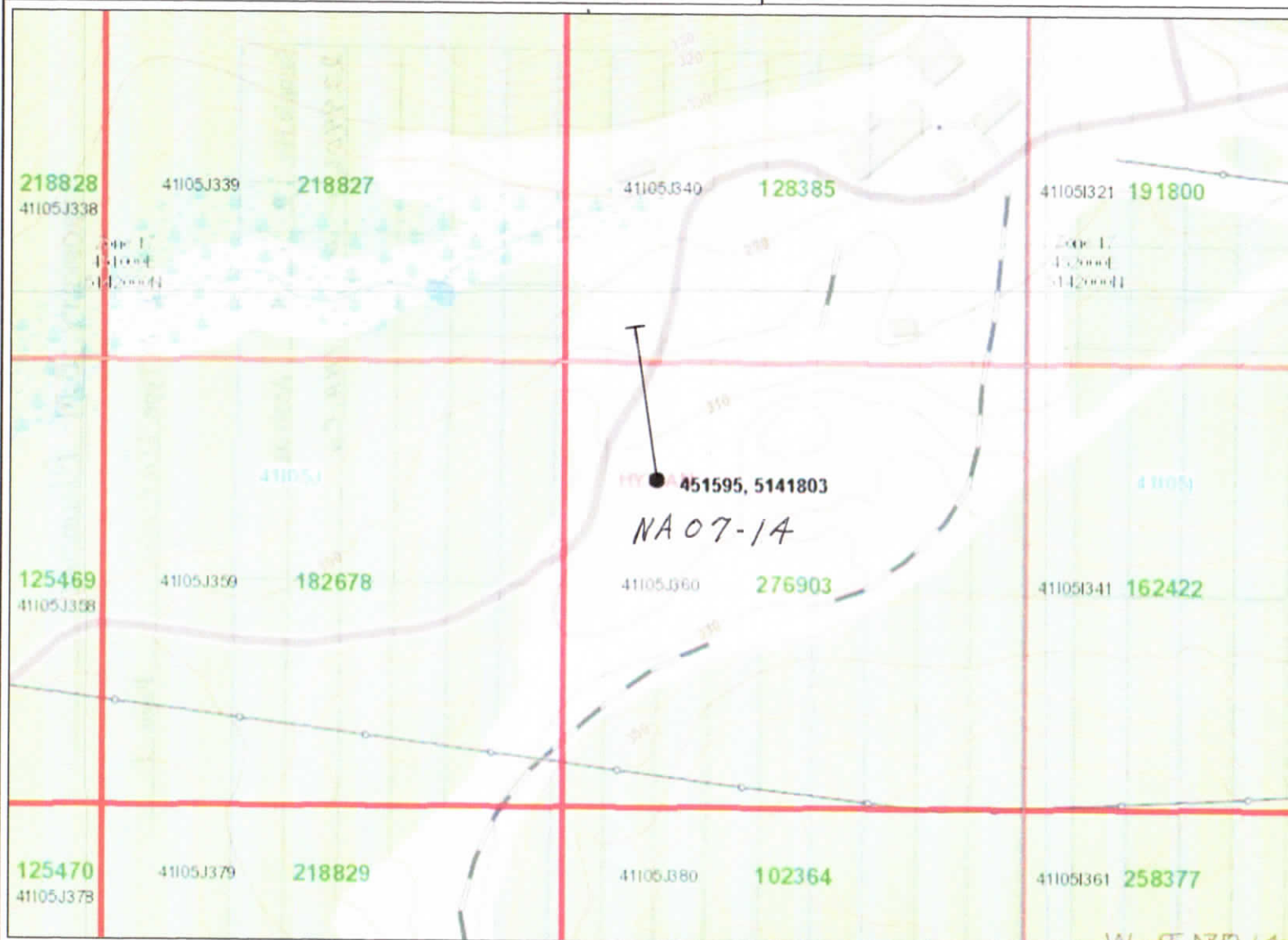
Projection: Web Mercator



The Ontario Ministry of Northern Development and Mines shall not be liable in any way for the use of, or reliance upon, this map or any information on this map. This map should not be used for: navigation, a plan of survey, routes, nor locations.

Imagery Copyright Notices: Ontario Ministry of Natural Resources and Forestry; NASA Landsat Program; First Base Solutions Inc.; Aéro-Photo (1961) Inc.; DigitalGlobe Inc.; U.S. Geological Survey.





Legend

- Provincial Grid Cell**
 - Available
 - Pending
 - Unavailable
- Mining Claim**
 - Mining Claim
 - Boundary Claim
- Alienation**
 - Withdrawal
 - Notice
- ENDM Administrative Boundaries**
 - ENDM Townships and Areas
 - Geographic Lot Fabric
 - UTM Grid 1K
 - UTM Grid 10K
 - Mining Division
 - Mineral Exploration and Development Region
 - CLUPA Protected Area - Far North
 - Resident Geologist District
- Federal Land Other**
 - Native Reserves
 - AMIS Sites
 - AMIS Features
 - Drill Hole
 - Mineral Occurrences
- MLAS Mining History**
 - Withdrawal - History
 - Notice - History
 - Mining Claim - History
 - Mining Land Tenure - History
 - Legacy Claim
- Provincial Grid**
 - Provincial Grid 250K
 - Provincial Grid 50K
 - Provincial Grid Group
- Land Tenure**
 - Surface Rights
 - Mining Rights
 - Mining and Surface Rights
 - Order-in-Council

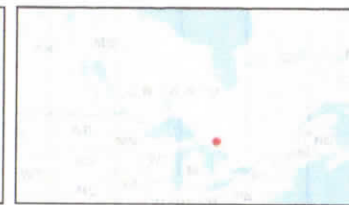


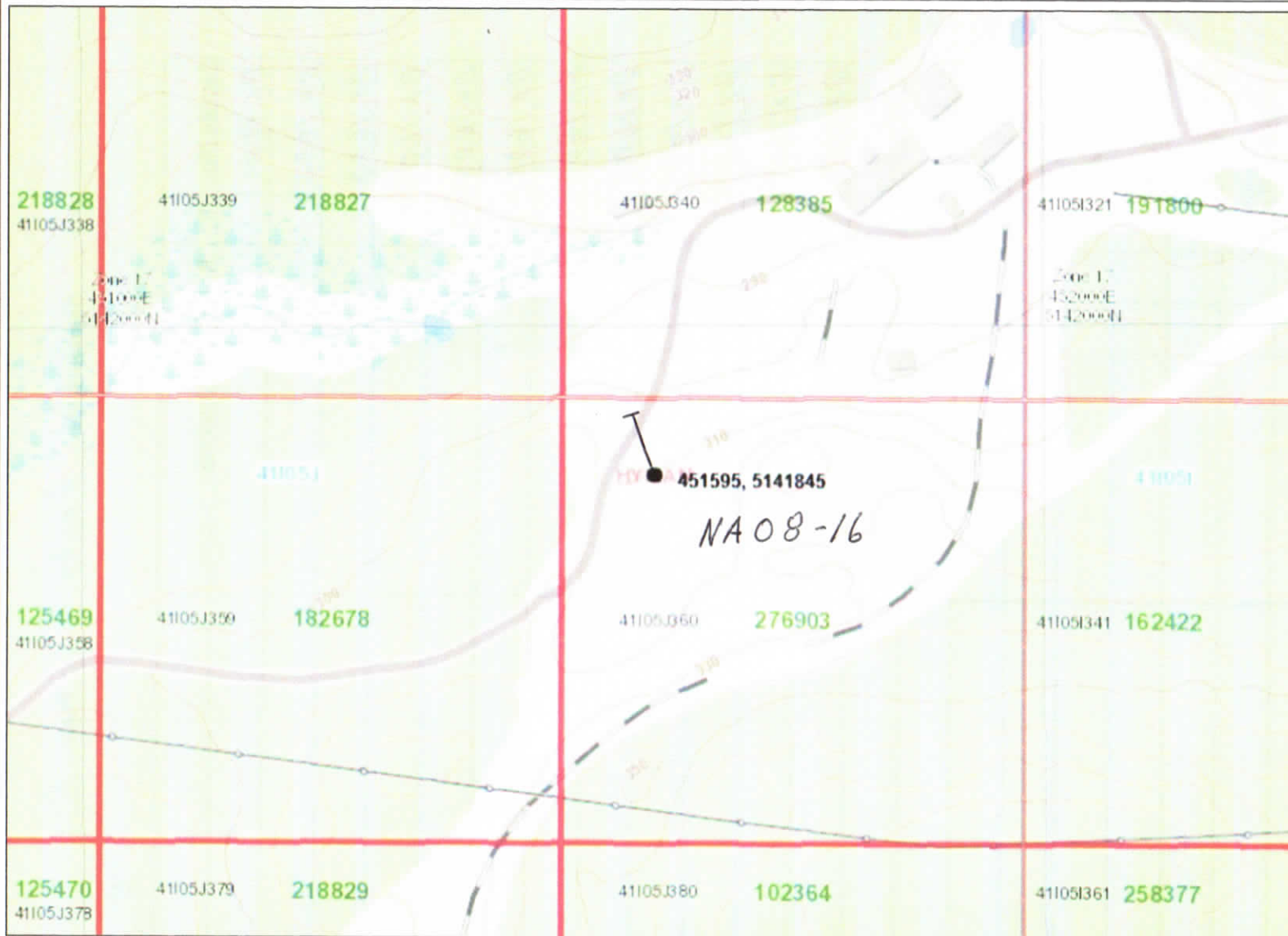
Projection: Web Mercator



The Ontario Ministry of Northern Development and Mines shall not be liable in any way for the use of, or reliance upon, this map or any information on this map. This map should not be used for: navigation, a plan of survey, routes, nor locations.

Imagery Copyright Notices: Ontario Ministry of Natural Resources and Forestry; NASA Landsat Program; First Base Solutions Inc.; Aéro-Photo (1961) Inc.; DigitalGlobe Inc.; U.S. Geological Survey.





Legend

- Provincial Grid Cell**
 - Available
 - Pending
 - Unavailable
- Mining Claim**
 - Mining Claim
 - Boundary Claim
- Alienation**
 - Withdrawal
 - Notice
- ENDM Administrative Boundaries**
 - ENDM Townships and Areas
 - Geographic Lot Fabric
 - UTM Grid 1K
 - UTM Grid 10K
 - Mining Division
 - Mineral Exploration and Development Region
 - CLUPA Protected Area - Far North
 - Resident Geologist District
 - Federal Land Other
 - Native Reserves
- AMIS Sites**
 - AMIS Sites
 - AMIS Features
 - Drill Hole
- Mineral Occurrences**
- MLAS Mining History**
 - Withdrawal - History
 - Notice - History
 - Mining Claim - History
 - Mining Land Tenure - History
 - Legacy Claim
- Provincial Grid**
 - Provincial Grid 250K
 - Provincial Grid 50K
 - Provincial Grid Group
- Land Tenure**
 - Surface Rights
 - Mining Rights
 - Mining and Surface Rights
 - Order-in-Council



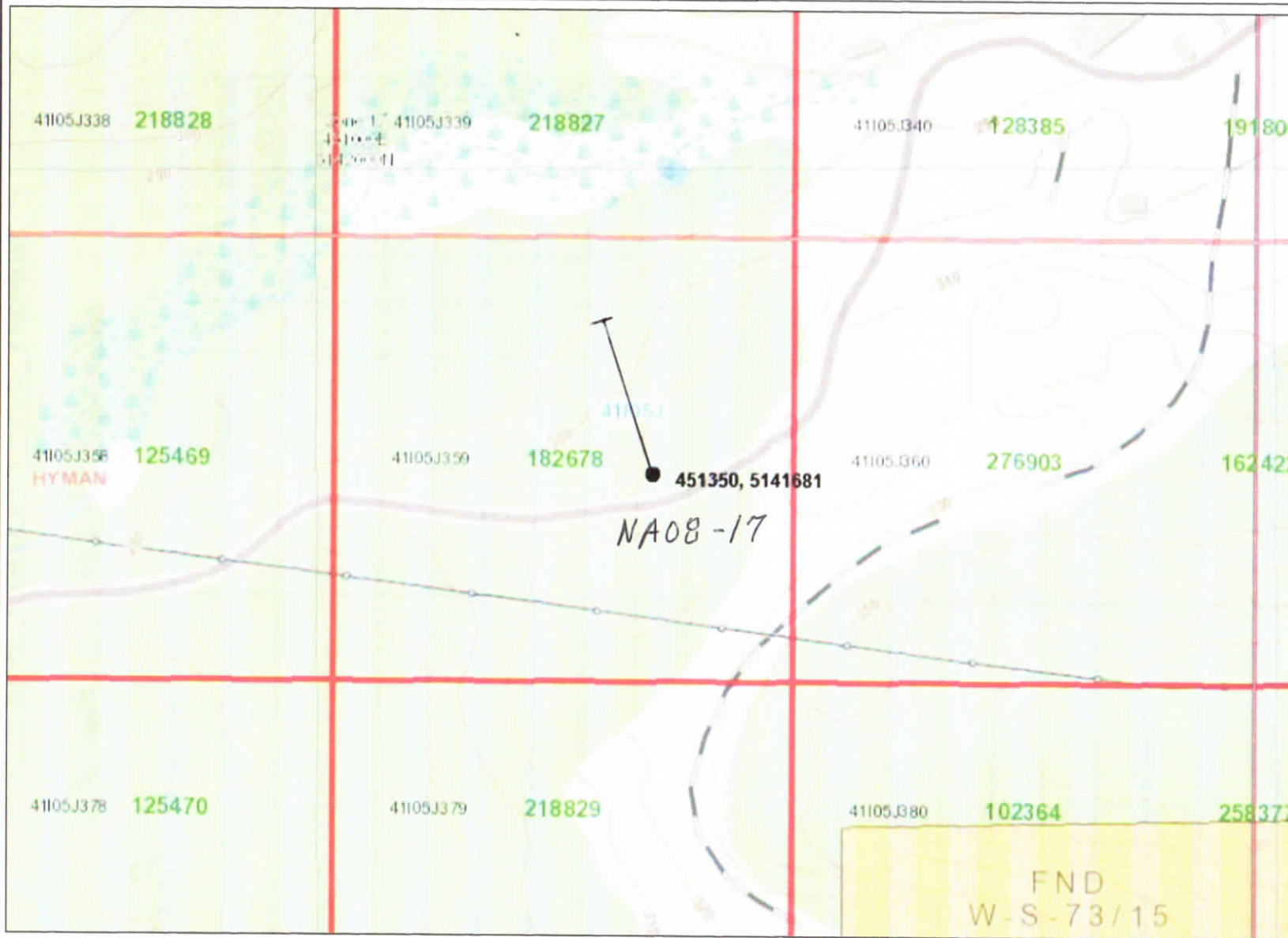
Projection: Web Mercator



The Ontario Ministry of Northern Development and Mines shall not be liable in any way for the use of, or reliance upon, this map or any information on this map. This map should not be used for: navigation, a plan of survey, routes, nor locations.

Imagery Copyright Notices: Ontario Ministry of Natural Resources and Forestry; NASA Landsat Program; First Base Solutions Inc.; Aéro-Photo (1961) Inc.; DigitalGlobe Inc.; U.S. Geological Survey.





Legend

- Provincial Grid Cell**
 - Available
 - Pending
 - Unavailable
- Mining Claim**
 - Mining Claim
 - Boundary Claim
- Alienation**
 - Withdrawal
 - Notice
- ENDM Administrative Boundaries**
 - ENDM Townships and Areas
 - Geographic Lot Fabric
 - UTM Grid 1K
 - UTM Grid 10K
 - Mining Division
 - Mineral Exploration and Development Region
 - CLUPA Protected Area - Far North
 - Resident Geologist District
 - Federal Land Other
 - Native Reserves
- Mineral Occurrences**
 - AMIS Sites
 - AMIS Features
 - Drill Hole
- MLAS Mining History**
 - Withdrawal - History
 - Notice - History
 - Mining Claim - History
 - Mining Land Tenure - History
 - Legacy Claim
- Provincial Grid**
 - Provincial Grid 250K
 - Provincial Grid 50K
 - Provincial Grid Group
- Land Tenure**
 - Surface Rights
 - Mining Rights
 - Mining and Surface Rights
 - Order-in-Council



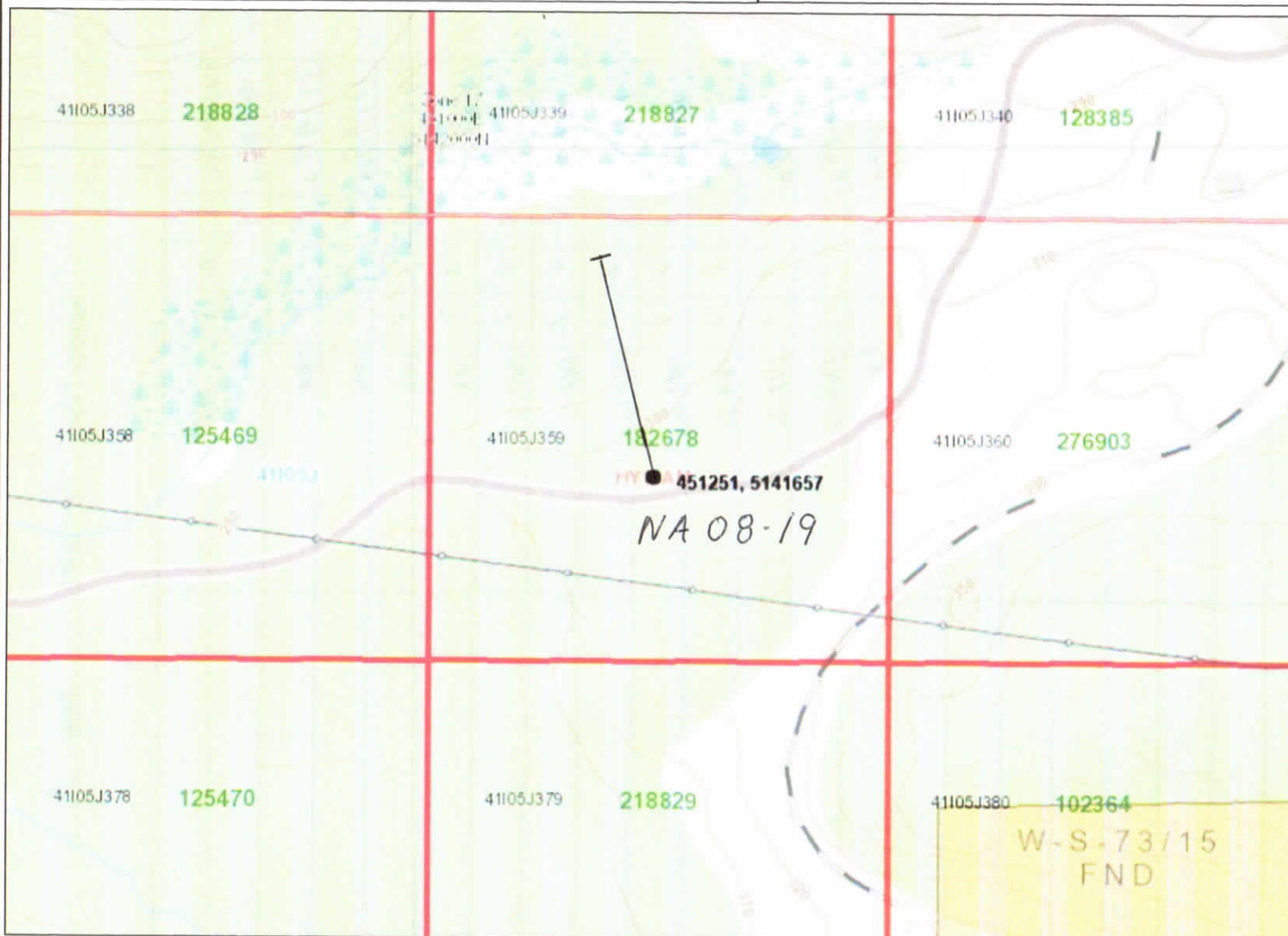
Projection: Web Mercator



The Ontario Ministry of Northern Development and Mines shall not be liable in any way for the use of, or reliance upon, this map or any information on this map. This map should not be used for: navigation, a plan of survey, routes, nor locations.

Imagery Copyright Notices: Ontario Ministry of Natural Resources and Forestry; NASA Landsat Program; First Base Solutions Inc.; Aéro-Photo (1961) Inc.; DigitalGlobe Inc.; U.S. Geological Survey.





- ### Legend
- Provincial Grid Cell**
 - Available
 - Pending
 - Unavailable
 - Mining Claim**
 - Mining Claim
 - Boundary Claim
 - Alienation**
 - Withdrawal
 - Notice
 - ENDM Administrative Boundaries**
 - ENDM Townships and Areas
 - Geographic Lot Fabric
 - UTM Grid 1K
 - UTM Grid 10K
 - Mining Division
 - Mineral Exploration and Development Region
 - CLUPA Protected Area - Far North
 - Resident Geologist District
 - Federal Land Other
 - Native Reserves
 - AMIS Sites**
 - AMIS Sites
 - AMIS Features
 - Drill Hole
 - Mineral Occurrences**
 - MLAS Mining History**
 - Withdrawal - History
 - Notice - History
 - Mining Claim - History
 - Mining Land Tenure - History
 - Legacy Claim
 - Provincial Grid**
 - Provincial Grid 250K
 - Provincial Grid 50K
 - Provincial Grid Group
 - Land Tenure**
 - Surface Rights
 - Mining Rights
 - Mining and Surface Rights
 - Order-in-Council



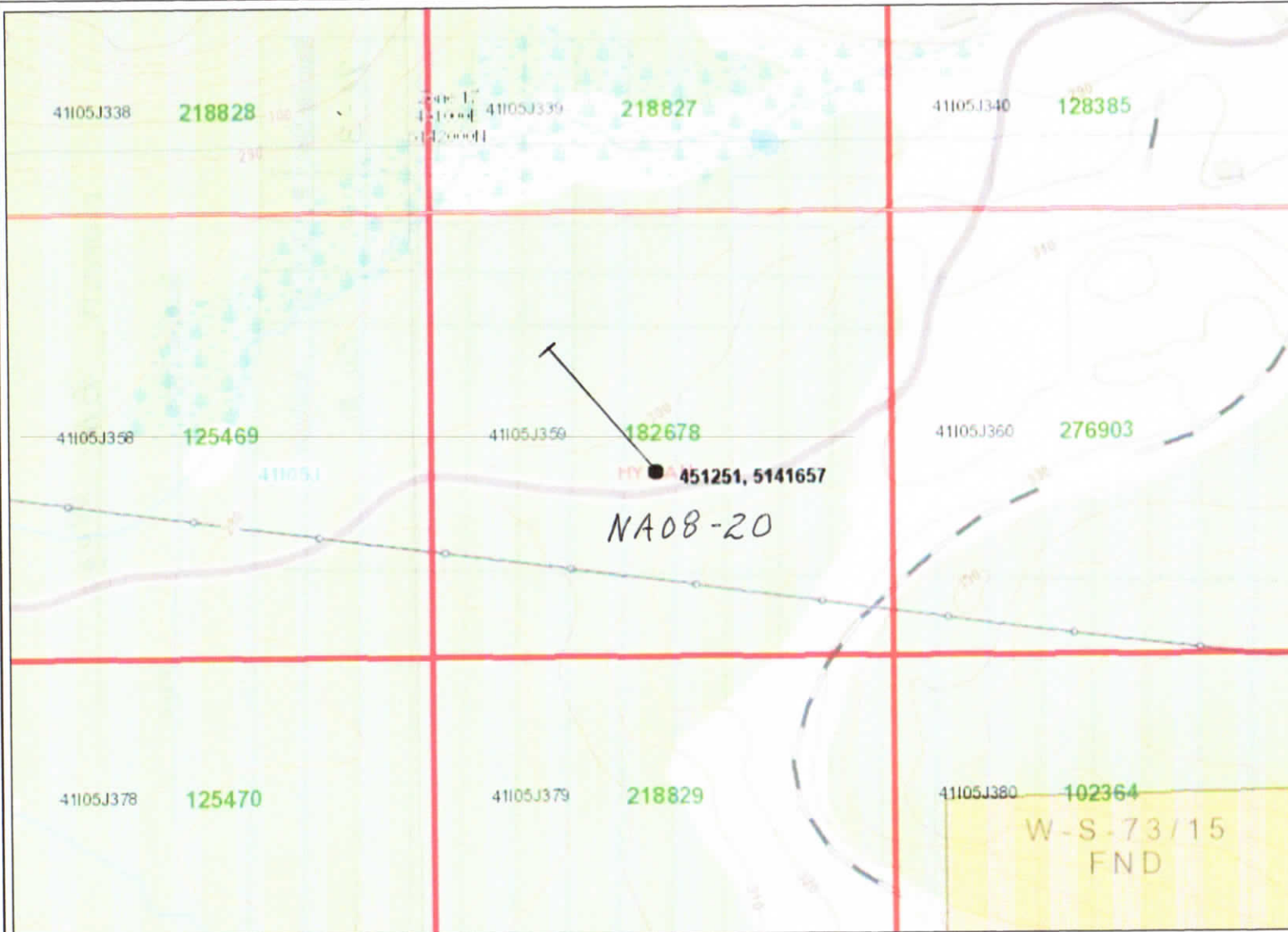
Projection: Web Mercator



The Ontario Ministry of Northern Development and Mines shall not be liable in any way for the use of, or reliance upon, this map or any information on this map. This map should not be used for: navigation, a plan of survey, routes, nor locations.

Imagery Copyright Notices: Ontario Ministry of Natural Resources and Forestry; NASA Landsat Program; First Base Solutions Inc.; Aéro-Photo (1961) Inc.; DigitalGlobe Inc.; U.S. Geological Survey.





Legend

- Provincial Grid Cell**
 - Available
 - Pending
 - Unavailable
- Mining Claim**
 - Mining Claim
 - Boundary Claim
- Alienation**
 - Withdrawal
 - Notice
- ENDM Administrative Boundaries**
 - ENDM Townships and Areas
 - Geographic Lot Fabric
 - UTM Grid 1K
 - UTM Grid 10K
 - Mining Division
 - Mineral Exploration and Development Region
 - CLUPA Protected Area - Far North
 - Resident Geologist District
 - Federal Land Other
 - Native Reserves
- AMIS Sites**
 - AMIS Sites
 - AMIS Features
 - Drill Hole
 - Mineral Occurrences
- MLAS Mining History**
 - Withdrawal - History
 - Notice - History
 - Mining Claim - History
 - Mining Land Tenure - History
 - Legacy Claim
- Provincial Grid**
 - Provincial Grid 250K
 - Provincial Grid 50K
 - Provincial Grid Group
- Land Tenure**
 - Surface Rights
 - Mining Rights
 - Mining and Surface Rights
 - Order-in-Council



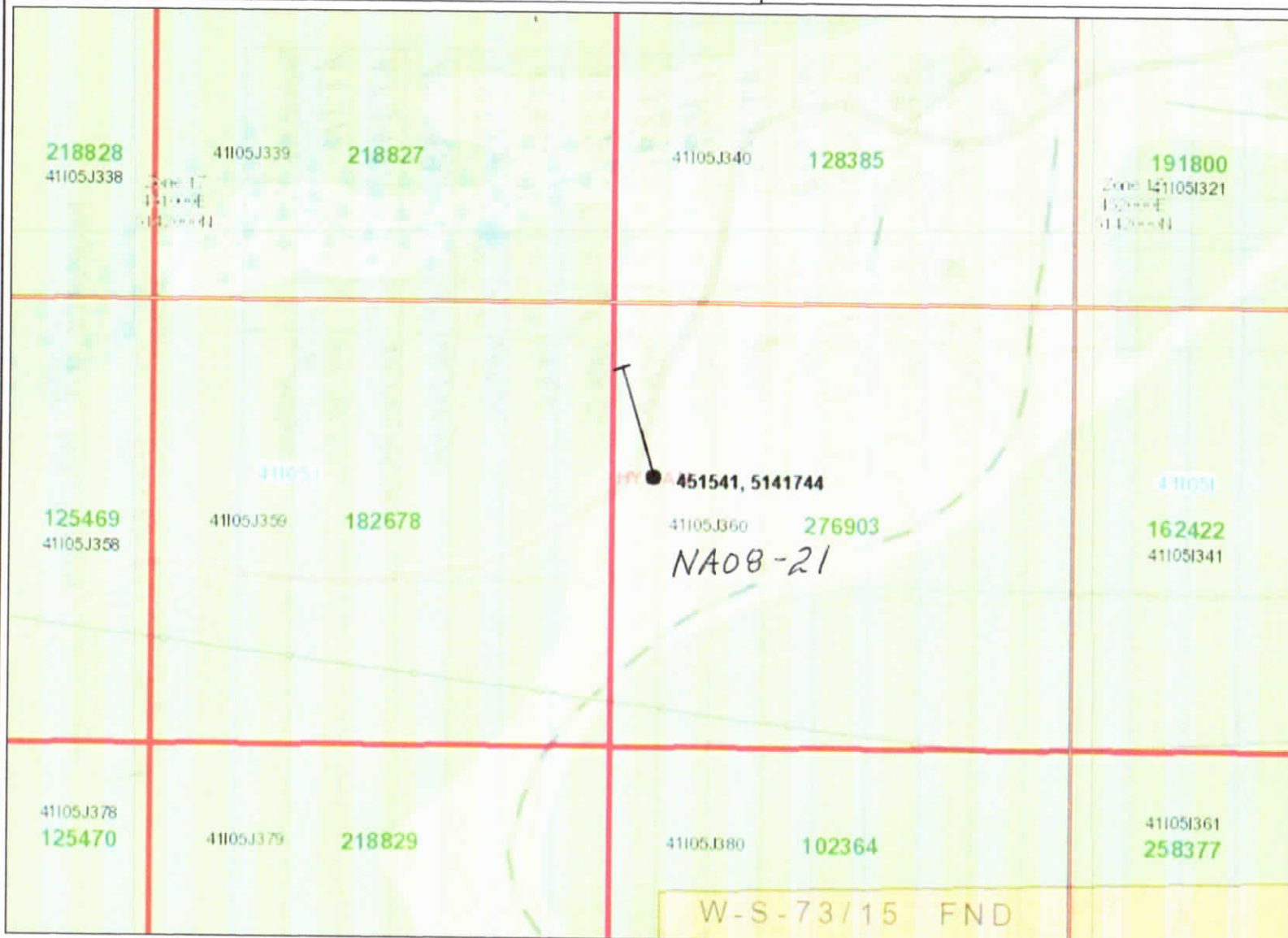
Projection: Web Mercator



The Ontario Ministry of Northern Development and Mines shall not be liable in any way for the use of, or reliance upon, this map or any information on this map. This map should not be used for: navigation, a plan of survey, routes, nor locations.

Imagery Copyright Notices: Ontario Ministry of Natural Resources and Forestry; NASA Landsat Program; First Base Solutions Inc.; Aéro-Photo (1961) Inc.; DigitalGlobe Inc.; U.S. Geological Survey.





- ### Legend
- Provincial Grid Cell**
 - Available
 - Pending
 - Unavailable
 - Mining Claim**
 - Mining Claim
 - Boundary Claim
 - Alienation**
 - Withdrawal
 - Notice
 - ENDM Administrative Boundaries**
 - ENDM Townships and Areas
 - Geographic Lot Fabric
 - UTM Grid 1K
 - UTM Grid 10K
 - Mining Division
 - Mineral Exploration and Development Region
 - CLUPA Protected Area - Far North
 - Resident Geologist District
 - Federal Land Other
 - Native Reserves
 - MLAS Mining History**
 - AMIS Sites
 - AMIS Features
 - Drill Hole
 - Mineral Occurrences
 - Withdrawal - History
 - Notice - History
 - Mining Claim - History
 - Mining Land Tenure - History
 - Legacy Claim
 - Provincial Grid**
 - Provincial Grid 250K
 - Provincial Grid 50K
 - Provincial Grid Group
 - Land Tenure**
 - Surface Rights
 - Mining Rights
 - Mining and Surface Rights
 - Order-in-Council

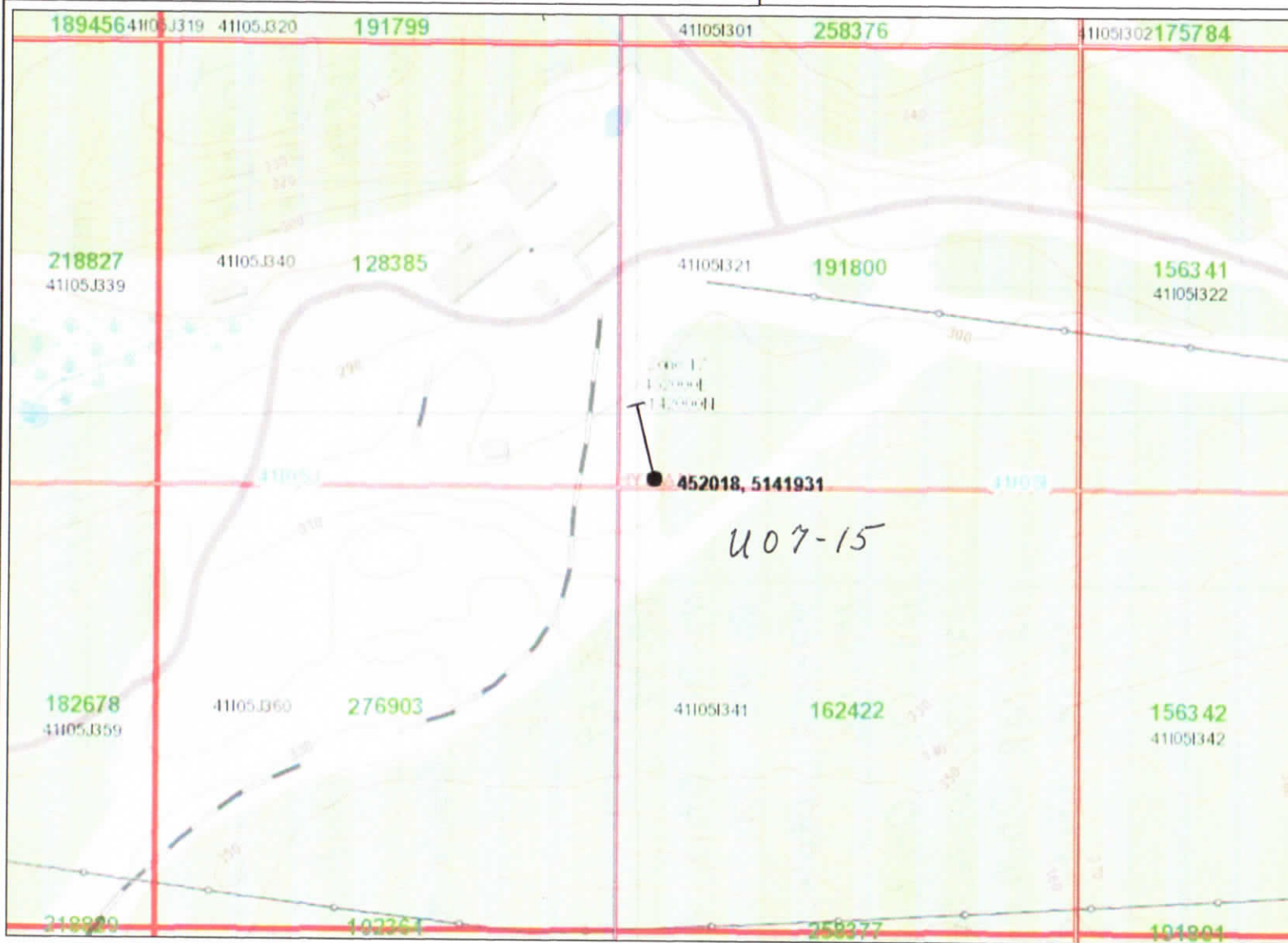


Projection: Web Mercator

The Ontario Ministry of Northern Development and Mines shall not be liable in any way for the use of, or reliance upon, this map or any information on this map. This map should not be used for: navigation, a plan of survey, routes, nor locations.

Imagery Copyright Notices: Ontario Ministry of Natural Resources and Forestry; NASA Landsat Program; First Base Solutions Inc.; Aéro-Photo (1961) Inc.; DigitalGlobe Inc.; U.S. Geological Survey.





Legend

- Provincial Grid Cell**
 - Available
 - Pending
 - Unavailable
- Mining Claim**
 - Mining Claim
 - Boundary Claim
- Alienation**
 - Withdrawal
 - Notice
- ENDM Administrative Boundaries**
 - ENDM Townships and Areas
 - Geographic Lot Fabric
 - UTM Grid 1K
 - UTM Grid 10K
 - Mining Division
 - Mineral Exploration and Development Region
 - CLUPA Protected Area - Far North
 - Resident Geologist District
- Other Land Tenure**
 - Federal Land Other
 - Native Reserves
- AMIS Sites**
 - AMIS Sites
 - AMIS Features
- Drill Hole**
 - Drill Hole
- Mineral Occurrences**
- MLAS Mining History**
 - Withdrawal - History
 - Notice - History
 - Mining Claim - History
 - Mining Land Tenure - History
 - Legacy Claim
- Provincial Grid**
 - Provincial Grid 250K
 - Provincial Grid 50K
 - Provincial Grid Group
- Land Tenure**
 - Surface Rights
 - Mining Rights
 - Mining and Surface Rights
 - Order-in-Council



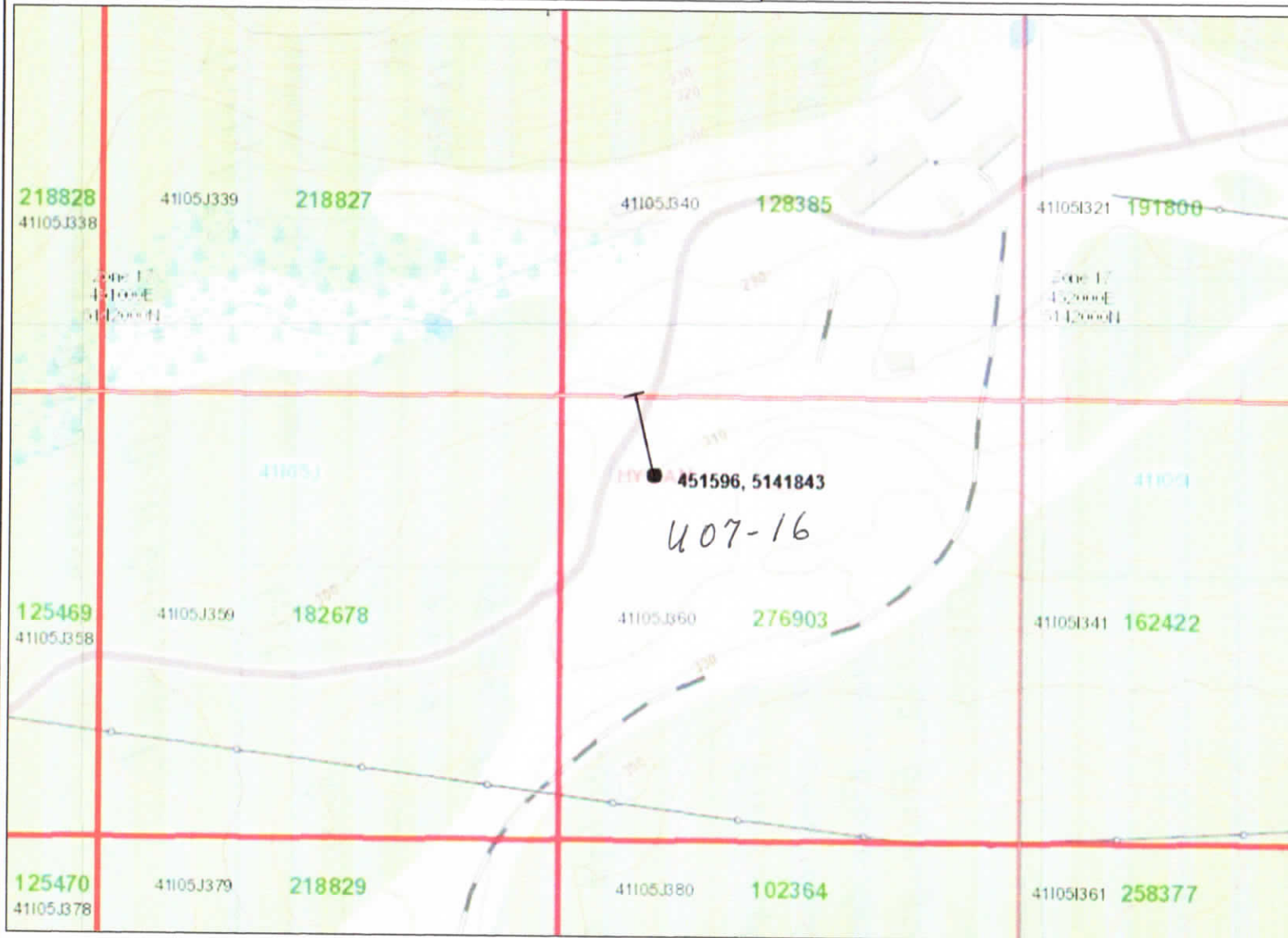
Projection: Web Mercator



The Ontario Ministry of Northern Development and Mines shall not be liable in any way for the use of, or reliance upon, this map or any information on this map. This map should not be used for: navigation, a plan of survey, routes, nor locations.

Imagery Copyright Notices: Ontario Ministry of Natural Resources and Forestry; NASA Landsat Program; First Base Solutions Inc.; Aéro-Photo (1961) Inc.; DigitalGlobe Inc.; U.S. Geological Survey.





- ### Legend
- Provincial Grid Cell**
 - Available
 - Pending
 - Unavailable
 - Mining Claim**
 - Mining Claim
 - Boundary Claim
 - Alienation**
 - Withdrawal
 - Notice
 - ENDM Administrative Boundaries**
 - ENDM Townships and Areas
 - Geographic Lot Fabric
 - UTM Grid 1K
 - UTM Grid 10K
 - Mining Division
 - Mineral Exploration and Development Region
 - CLUPA Protected Area - Far North
 - Resident Geologist District
 - Federal Land Other
 - Native Reserves
 - AMIS Sites**
 - AMIS Sites
 - AMIS Features
 - Drill Hole
 - Mineral Occurrences
 - MLAS Mining History**
 - Withdrawal - History
 - Notice - History
 - Mining Claim - History
 - Mining Land Tenure - History
 - Legacy Claim
 - Provincial Grid**
 - Provincial Grid 250K
 - Provincial Grid 50K
 - Provincial Grid Group
 - Land Tenure**
 - Surface Rights
 - Mining Rights
 - Mining and Surface Rights
 - Order-in-Council



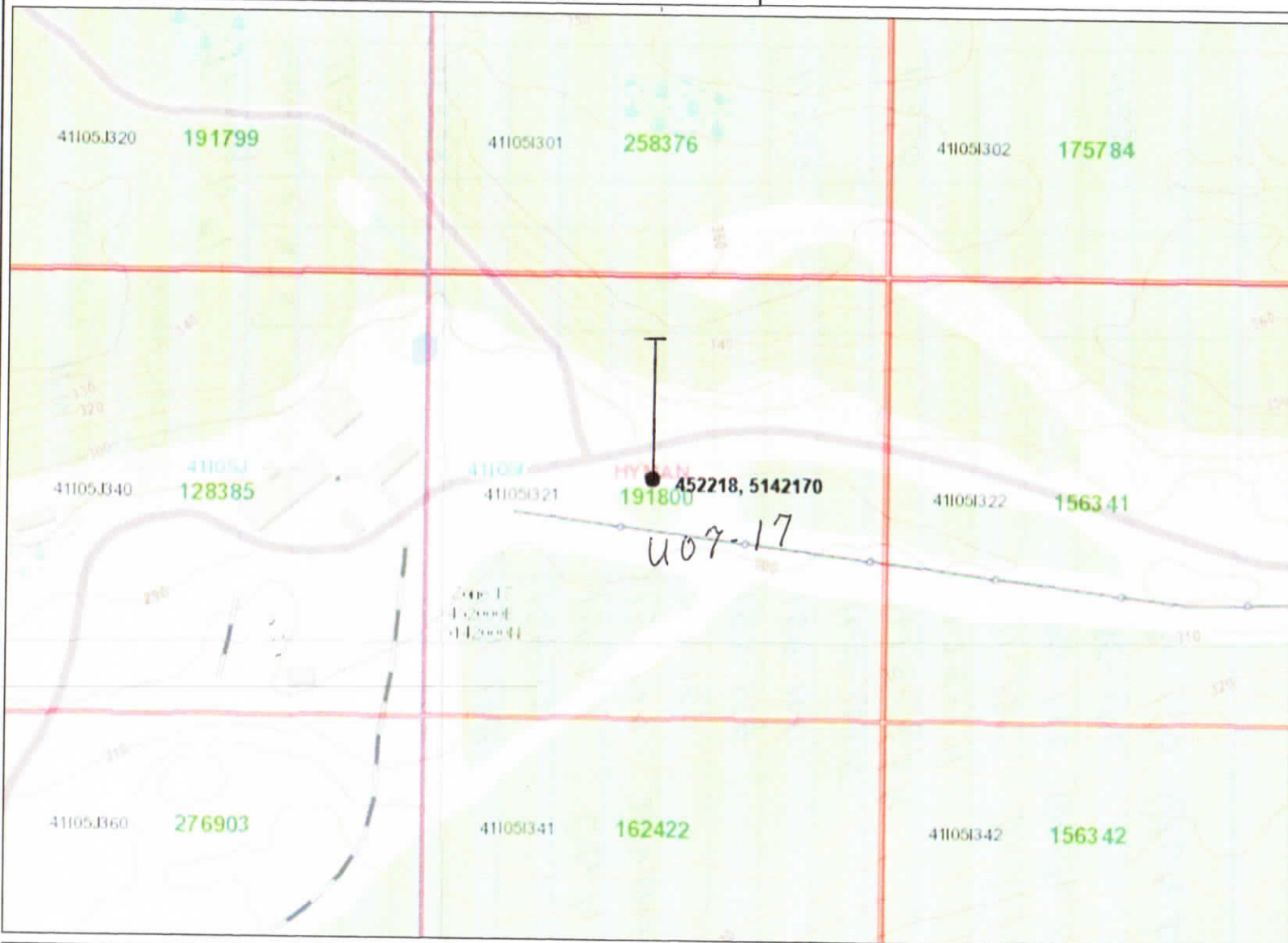
Projection: Web Mercator



The Ontario Ministry of Northern Development and Mines shall not be liable in any way for the use of, or reliance upon, this map or any information on this map. This map should not be used for: navigation, a plan of survey, routes, nor locations.

Imagery Copyright Notices: Ontario Ministry of Natural Resources and Forestry; NASA Landsat Program; First Base Solutions Inc.; Aéro-Photo (1961) Inc.; DigitalGlobe Inc.; U.S. Geological Survey.





Legend

- Provincial Grid Cell**
 - Available
 - Pending
 - Unavailable
- Mining Claim**
 - Mining Claim
 - Boundary Claim
- Allienation**
 - Withdrawal
 - Notice
- ENDM Administrative Boundaries**
 - ENDM Townships and Areas
 - Geographic Lot Fabric
 - UTM Grid 1K
 - UTM Grid 10K
 - Mining Division
 - Mineral Exploration and Development Region
 - CLUPA Protected Area - Far North
 - Resident Geologist District
 - Federal Land Other
 - Native Reserves
- AMIS Sites**
 - AMIS Sites
 - AMIS Features
 - Drill Hole
 - Mineral Occurrences
- MLAS Mining History**
 - Withdrawal - History
 - Notice - History
 - Mining Claim - History
 - Mining Land Tenure - History
 - Legacy Claim
- Provincial Grid**
 - Provincial Grid 250K
 - Provincial Grid 50K
 - Provincial Grid Group
- Land Tenure**
 - Surface Rights
 - Mining Rights
 - Mining and Surface Rights
 - Order-in-Council

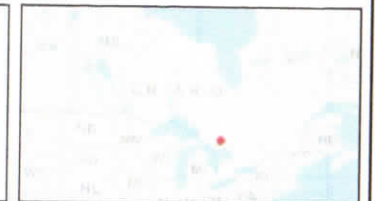


Projection: Web Mercator



The Ontario Ministry of Northern Development and Mines shall not be liable in any way for the use of, or reliance upon, this map or any information on this map. This map should not be used for: navigation, a plan of survey, routes, nor locations.

Imagery Copyright Notices: Ontario Ministry of Natural Resources and Forestry; NASA Landsat Program; First Base Solutions Inc.; Aéro-Photo (1961) Inc.; DigitalGlobe Inc.; U.S. Geological Survey.



Appendix II

Certificate of Analysis



BUREAU VERITAS MINERAL LABORATORIES
Canada

www.bureauveritas.com/um

Bureau Veritas Commodities Canada Ltd.
9050 Shaughnessy St Vancouver British Columbia V6P 6E5 Canada
PHONE (604) 253-3158

Client: **MacGregor, R.A.**
28 Ford St.
Sault Ste. Marie Ontario P6A 4N4 Canada

Submitted By: R.A. MacGregor
Receiving Lab: Canada-Vancouver
Received: June 18, 2019
Report Date: June 21, 2019
Page: 1 of 5

CERTIFICATE OF ANALYSIS

VAN19001480.1

CLIENT JOB INFORMATION

Project: None Given
Shipment ID:
P.O. Number
Number of Samples: 107

SAMPLE DISPOSAL

IMM-PLP Return immediately after analysis

SAMPLE PREPARATION AND ANALYTICAL PROCEDURES

Procedure Code	Number of Samples	Code Description	Test Wgt (g)	Report Status	Lab
SLBHP	107	Sorting, labeling and boxing samples received as pulps			VAN
MA200	107	4 Acid digestion ICP-MS analysis	0.25	Completed	VAN
EN001-MA	107	Environmental disposal fee - Multi-acid neutralization			VAN

ADDITIONAL COMMENTS

Bureau Veritas does not accept responsibility for samples left at the laboratory after 90 days without prior written instructions for sample storage or return.

Invoice To: **MacGregor, R.A.**
28 Ford St.
Sault Ste. Marie Ontario P6A 4N4
Canada

CC:


GEORGE ARCALA
Instruments Division (P&S) Bureau Veritas

This report supersedes all previous preliminary and final reports with this file number dated prior to the date on this certificate. Signature indicates final approval, preliminary reports are unsigned and should be used for reference only. All results are considered the confidential property of the client, Bureau Veritas assumes the liabilities for actual cost of analysis only. Results apply to samples as submitted. "*" asterisk indicates that an analytical result could not be provided due to unusually high levels of interference from other elements.



Bureau Veritas Commodities Canada Ltd.
9050 Shaughnessy St Vancouver British Columbia V6P 6E5 Canada
PHONE (604) 253-3158

Client: **MacGregor, R.A.**
28 Ford St.
Sault Ste Marie Ontario P6A 4N4 Canada

Project: None Given
Report Date: June 21, 2019

Page: 2 of 5

Part: 1 of 3

CERTIFICATE OF ANALYSIS

VAN19001480.1

Method	Analyte	Unit	MA200																			
			Mo	Cu	Pb	Zn	Ag	Ni	Co	Mn	Fe	As	U	Th	Sr	Cd	Sb	Bi	V	Ca	P	La
			ppm	ppm	ppm	ppm	ppm	ppm	ppm	ppm	%	ppm	ppm	ppm	ppm	ppm	ppm	ppm	ppm	ppm	%	%
		MDL	0.1	0.1	0.1	1	0.1	0.1	0.2	1	0.01	1	0.1	0.1	1	0.1	0.1	0.1	1	0.01	0.001	0.1
IMA2904	Pulp		2.9	48.2	3.5	318	0.1	15.3	12.8	1382	18.50	<1	0.8	2.2	73	0.2	0.5	0.1	32	2.64	0.059	13.2
IMA2905	Pulp		1.8	74.8	5.2	40	0.1	121.3	54.7	227	5.02	37	5.8	14.1	19	0.2	0.4	0.9	188	0.08	0.047	41.1
IMA2908	Pulp		1.9	118.2	8.9	41	<0.1	144.2	45.9	230	5.53	28	5.8	15.3	18	<0.1	0.8	0.9	180	0.08	0.045	38.9
IMA2907	Pulp		1.8	93.7	20.4	44	0.2	125.5	46.4	204	4.87	30	5.8	15.6	18	<0.1	0.5	0.8	172	0.08	0.043	40.0
IMA2908	Pulp		0.6	2307.9	59.7	97	0.8	4.3	7.1	68	1.22	4	4.5	15.1	29	0.8	0.1	0.6	7	0.14	0.011	20.4
IMA2909	Pulp		2.0	50.3	6.3	42	0.1	74.3	31.3	285	4.91	28	4.5	10.7	15	<0.1	0.3	0.4	175	0.08	0.040	26.6
IMA2910	Pulp		4.7	71.9	10.6	28	0.2	29.4	10.0	285	2.51	5	2.3	5.5	28	0.2	0.1	1.3	42	0.21	0.015	36.0
IMA2911	Pulp		2.3	27.0	37.3	88	0.2	60.4	18.7	258	4.83	10	4.7	14.9	77	0.2	0.2	0.1	90	0.23	0.044	53.7
IMA2912	Pulp		25.7	50.0	12.8	43	0.2	30.3	15.3	237	2.86	10	2.3	5.6	27	0.1	<0.1	3.7	61	0.15	0.023	30.6
IMA2913	Pulp		8.0	273.0	15.2	29	0.3	79.7	25.0	357	4.85	25	38.7	17.7	11	0.1	0.2	0.9	122	0.10	0.038	50.7
IMA2914	Pulp		8.4	418.5	10.9	32	0.3	87.0	48.6	387	5.00	64	4.7	12.7	12	0.3	0.1	0.9	150	0.10	0.041	22.7
IMA2915	Pulp		4.6	12.7	24.0	19	0.1	3.9	3.1	85	0.83	3	7.9	33.9	10	0.2	<0.1	1.4	9	0.18	0.007	38.5
IMA2916	Pulp		13.1	903.8	28.9	81	0.4	30.2	18.4	189	3.59	26	1.8	5.1	11	0.3	0.1	1.7	52	0.09	0.014	27.1
IMA2917	Pulp		1.5	61.0	109.7	226	0.2	6.6	31.7	655	8.11	22	8.4	37.3	88	1.1	0.2	0.2	48	0.97	0.245	79.5
IMA2918	Pulp		0.8	34.8	114.3	364	0.1	5.1	23.8	883	8.43	11	2.8	14.9	88	1.0	0.2	0.1	68	1.22	0.301	32.5
IMA2919	Pulp		1.8	396.9	8.8	78	0.2	64.1	39.7	827	6.15	32	2.9	11.0	132	0.2	0.2	0.6	289	2.96	0.080	23.1
IMA2920	Pulp		0.8	80.3	9.5	112	0.1	80.0	47.0	1225	9.02	25	1.3	5.2	173	<0.1	0.3	0.4	387	5.28	0.100	17.3
IMA2921	Pulp		1.6	7.1	24.0	9	<0.1	5.9	5.5	35	0.43	4	19.1	91.9	21	0.1	<0.1	0.2	15	0.12	0.028	108.0
IMA2922	Pulp		3.2	4.8	17.4	8	0.1	4.2	3.4	41	0.52	2	46.2	261.3	20	<0.1	<0.1	<0.1	20	0.09	0.027	267.3
IMA2923	Pulp		2.4	9.2	85.8	130	0.1	5.9	6.8	72	0.86	2	42.6	214.2	26	0.4	0.1	0.2	15	0.15	0.025	204.8
IMA2924	Pulp		2.4	20.0	85.7	52	0.1	5.8	9.9	19	0.49	6	63.0	336.1	18	0.3	<0.1	0.3	10	0.03	0.038	403.0
IMA2925	Pulp		10.7	26.7	292.6	8	0.2	11.1	20.1	144	1.28	10	239.5	1813.6	35	0.1	0.1	1.0	13	0.27	0.180	1876.9
IMA2926	Pulp		3.0	5.3	143.8	219	0.2	4.0	7.2	28	0.44	6	49.9	234.8	21	1.8	<0.1	0.2	9	0.05	0.025	299.3
IMA2927	Pulp		1.0	3.9	30.8	3	<0.1	8.0	2.3	18	0.22	2	39.4	164.1	35	<0.1	<0.1	<0.1	4	0.01	0.019	178.8
IMA2928	Pulp		4.0	17.7	259.0	409	0.1	6.7	10.6	85	0.61	7	30.5	168.2	28	2.5	<0.1	0.3	11	0.14	0.022	341.1
IMA2929	Pulp		13.7	25.7	301.3	108	0.6	21.5	53.9	74	1.63	31	392.3	2317.8	32	0.8	0.4	1.7	15	0.25	0.198	>2000
IMA2930	Pulp		2.8	12.9	242.0	316	0.1	5.7	7.5	86	0.57	4	41.3	165.7	26	1.8	<0.1	0.2	12	0.11	0.025	303.6
IMA2931	Pulp		2.0	12.9	21.1	12	0.1	13.4	6.5	123	1.36	11	22.5	115.4	35	<0.1	0.1	0.2	17	0.24	0.019	190.6
IMA2932	Pulp		3.6	15.6	138.9	56	0.2	12.6	15.9	81	0.93	16	73.9	402.7	35	0.3	0.1	0.3	11	0.19	0.043	454.4
IMA2933	Pulp		1.8	82.2	75.9	11	0.3	11.6	10.5	86	1.22	20	32.8	177.2	24	0.3	0.1	1.1	10	0.12	0.020	234.9

This report supersedes all previous preliminary and final reports with this file number dated prior to the date on this certificate. Signature indicates final approval. Preliminary reports are unsigned and should be used for reference only.



BUREAU VERITAS MINERAL LABORATORIES
 VERITAS

www.bureauveritas.com/um

Client: **MacGregor, R.A.**
 28 Ford St
 Sault Ste. Marie Ontario P6A 4N4 Canada

Bureau Veritas Commodities Canada Ltd.
 9050 Shaughnessy St Vancouver British Columbia V6P 6E5 Canada
 PHONE (604) 253-3158

Project: None Given
 Report Date: June 21, 2019

Page: 2 of 5

Part: 2 of 3

CERTIFICATE OF ANALYSIS

VAN19001480.1

Method	Analyte	Unit	MDL	MA200	MA200	MA200	MA200	MA200	MA200	MA200	MA200	MA200	MA200	MA200	MA200	MA200	MA200	MA200	MA200	MA200	MA200		
				Cr	Mg	Ba	Ti	Al	Na	K	W	Zr	Ce	Sn	Y	Nb	Ta	Be	Sc	Li	S	Rb	Hf
				ppm	%	ppm	%	%	%	%	ppm	ppm	ppm	ppm	ppm	ppm	ppm	ppm	%	ppm	ppm		
				1	0.01	1	0.001	0.01	0.001	0.01	0.1	0.1	0.1	0.1	0.1	1	1	0.1	0.1	0.1	0.1		
IMA2904	Pulp			40	1.81	78	0.098	4.16	0.519	0.85	0.4	57.9	23	1.2	9.2	1.7	0.1	<1	3	4.0	0.3	30.0	14.1
IMA2905	Pulp			176	1.07	715	0.495	11.75	0.061	5.43	3.1	184.2	80	3.5	12.9	13.0	1.1	4	24	27.9	0.5	291.2	4.6
IMA2906	Pulp			158	1.15	712	0.459	11.49	0.057	5.24	3.0	156.3	83	3.3	14.1	13.0	1.0	3	25	27.5	0.7	283.9	4.0
IMA2907	Pulp			157	1.07	705	0.485	11.47	0.080	5.76	2.7	153.6	82	3.0	14.1	13.2	1.1	4	23	24.7	0.6	320.9	4.0
IMA2908	Pulp			61	0.31	198	0.027	3.19	1.332	1.45	0.2	53.0	40	0.8	4.5	3.9	0.5	<1	2	4.8	0.4	51.1	1.4
IMA2909	Pulp			180	1.16	570	0.490	10.84	0.050	5.48	2.7	154.8	57	3.2	10.1	11.1	0.9	3	22	24.5	0.2	287.3	4.3
IMA2910	Pulp			228	0.73	143	0.054	3.60	1.492	0.82	<0.1	81.2	63	0.5	4.0	1.3	<0.1	<1	6	5.2	0.1	42.4	2.1
IMA2911	Pulp			186	1.54	386	0.164	8.34	3.580	2.33	0.7	220.4	105	1.2	7.2	5.2	0.5	1	12	23.0	0.1	103.3	6.0
IMA2912	Pulp			91	0.88	106	0.052	4.43	1.500	0.97	0.3	74.8	58	0.9	4.3	1.5	0.1	1	8	10.6	<0.1	55.2	2.1
IMA2913	Pulp			213	1.66	517	0.163	8.35	0.058	4.66	1.3	181.5	98	3.0	16.9	60.2	0.2	5	18	16.2	0.2	275.5	3.8
IMA2914	Pulp			162	1.82	665	0.195	10.24	0.067	5.80	1.6	142.5	44	4.2	8.7	5.0	0.3	6	21	18.7	0.1	329.8	3.9
IMA2915	Pulp			73	0.39	384	0.056	2.95	0.224	1.77	0.5	74.5	67	1.3	5.6	6.5	0.4	1	2	12.3	<0.1	100.7	1.9
IMA2916	Pulp			160	1.28	160	0.130	3.39	0.471	0.98	0.4	60.8	47	1.1	4.1	3.6	0.2	2	6	15.7	0.2	53.6	1.5
IMA2917	Pulp			44	2.43	230	0.586	6.95	1.749	1.14	0.7	258.4	163	1.3	23.4	11.1	0.8	2	16	21.5	0.2	41.5	6.3
IMA2918	Pulp			45	2.58	173	0.629	6.74	1.452	0.99	0.5	263.1	71	1.6	21.6	11.0	0.6	1	17	23.4	0.2	39.9	6.8
IMA2919	Pulp			176	2.33	607	0.894	8.74	2.767	2.62	0.9	129.1	51	2.3	23.3	16.8	1.0	3	28	25.9	0.1	113.3	3.5
IMA2920	Pulp			173	3.50	291	1.244	7.15	0.786	2.56	0.7	97.4	36	1.3	24.3	15.6	1.0	2	35	28.3	0.1	238.0	2.3
IMA2921	Pulp			69	0.11	792	0.065	4.35	0.068	4.55	0.5	66.1	192	1.6	9.2	5.0	0.5	<1	2	3.6	<0.1	204.0	2.0
IMA2922	Pulp			92	0.13	876	0.179	4.75	0.056	5.16	0.6	176.0	458	2.3	24.2	16.1	1.8	2	3	5.1	<0.1	248.2	5.0
IMA2923	Pulp			88	0.13	784	0.141	3.51	0.063	4.12	0.4	143.1	368	1.3	24.1	15.0	1.7	<1	2	5.0	<0.1	183.5	3.9
IMA2924	Pulp			98	0.05	652	0.249	3.32	0.048	4.10	0.7	138.7	738	1.1	28.7	25.7	2.7	<1	1	2.3	0.1	159.6	3.9
IMA2925	Pulp			106	0.14	751	0.475	3.57	0.055	3.97	1.1	323.9	>2000	1.8	129.7	49.9	5.6	<1	3	7.6	0.3	186.0	8.7
IMA2926	Pulp			64	0.11	739	0.111	3.97	0.056	4.20	0.6	92.1	525	1.5	23.5	12.2	1.2	1	2	4.5	<0.1	177.3	2.6
IMA2927	Pulp			91	0.01	44	0.022	1.18	0.148	0.39	0.1	44.3	312	0.2	15.2	2.6	0.2	<1	<1	1.3	<0.1	13.7	1.2
IMA2928	Pulp			94	0.13	873	0.149	3.87	0.073	4.47	0.5	114.3	596	1.1	18.0	15.9	1.7	<1	2	3.8	0.1	184.3	3.2
IMA2929	Pulp			127	0.16	398	0.322	2.50	0.046	2.64	1.5	164.9	>2000	1.6	194.7	54.3	6.3	2	4	8.4	1.0	123.9	4.8
IMA2930	Pulp			100	0.10	781	0.150	3.68	0.066	4.16	0.5	107.1	555	1.1	18.2	15.7	1.7	<1	2	3.7	<0.1	162.2	3.0
IMA2931	Pulp			97	0.35	755	0.102	4.01	0.156	3.74	0.4	84.3	335	0.8	13.6	10.8	1.1	<1	2	6.4	0.1	141.6	2.3
IMA2932	Pulp			102	0.20	752	0.121	3.34	0.062	4.08	0.4	95.6	843	0.6	35.5	15.5	1.8	<1	2	3.4	0.2	143.9	2.6
IMA2933	Pulp			122	0.14	706	0.087	3.14	0.069	3.62	0.4	88.7	412	0.7	16.7	12.3	1.3	<1	2	2.5	0.6	134.3	2.5

This report supersedes all previous preliminary and final reports with this file number dated prior to the date on this certificate. Signature indicates final approval, preliminary reports are unsigned and should be used for reference only.



Bureau Veritas Commodities Canada Ltd.
 9050 Shaughnessy St Vancouver British Columbia V6P 6E5 Canada
 PHONE (604) 253-3158

Client: **MacGregor, R.A.**
 28 Ford St.
 Sault Ste Marie Ontario P6A 4N4 Canada

Project: None Given
Report Date: June 21, 2019

Page: 2 of 5

Part: 3 of 3

CERTIFICATE OF ANALYSIS

VAN19001480.1

Method	Analyte	Unit	MA200	MA200	MA200	MA200	MA200
			In	Re	Se	Te	Ti
MDL			ppm	ppm	ppm	ppm	ppm
			0.05	0.005	1	0.5	0.5
IMA2904	Pulp		0.15	<0.005	<1	0.7	<0.5
IMA2905	Pulp		0.09	0.008	2	0.7	1.8
IMA2906	Pulp		0.11	0.008	2	0.6	1.7
IMA2907	Pulp		0.09	0.008	<1	0.7	1.7
IMA2908	Pulp		0.18	<0.005	<1	<0.5	<0.5
IMA2909	Pulp		0.06	0.009	<1	<0.5	1.7
IMA2910	Pulp		<0.05	<0.005	<1	<0.5	<0.5
IMA2911	Pulp		<0.05	<0.005	<1	<0.5	0.7
IMA2912	Pulp		<0.05	<0.005	<1	<0.5	<0.5
IMA2913	Pulp		0.15	<0.005	<1	<0.5	1.8
IMA2914	Pulp		0.09	0.008	<1	0.5	1.7
IMA2915	Pulp		<0.05	<0.005	<1	<0.5	<0.5
IMA2916	Pulp		0.07	0.005	1	<0.5	<0.5
IMA2917	Pulp		<0.05	<0.005	<1	<0.5	<0.5
IMA2918	Pulp		<0.05	<0.005	<1	<0.5	<0.5
IMA2919	Pulp		0.09	<0.005	<1	0.6	0.8
IMA2920	Pulp		0.08	<0.005	<1	0.8	1.8
IMA2921	Pulp		<0.05	<0.005	<1	<0.5	0.8
IMA2922	Pulp		<0.05	<0.005	<1	<0.5	1.0
IMA2923	Pulp		<0.05	<0.005	<1	<0.5	0.9
IMA2924	Pulp		<0.05	<0.005	<1	<0.5	0.8
IMA2925	Pulp		<0.05	<0.005	<1	<0.5	0.9
IMA2926	Pulp		<0.05	<0.005	<1	<0.5	0.9
IMA2927	Pulp		<0.05	<0.005	<1	<0.5	<0.5
IMA2928	Pulp		<0.05	<0.005	<1	<0.5	1.0
IMA2929	Pulp		<0.05	<0.005	4	<0.5	0.7
IMA2930	Pulp		<0.05	<0.005	<1	<0.5	1.0
IMA2931	Pulp		<0.05	<0.005	<1	<0.5	0.7
IMA2932	Pulp		<0.05	<0.005	<1	<0.5	0.8
IMA2933	Pulp		<0.05	<0.005	<1	<0.5	0.7



BUREAU VERITAS

MINERAL LABORATORIES

www.bureauveritas.com/um

Bureau Veritas Commodities Canada Ltd.

9050 Shaughnessy St Vancouver British Columbia V6P 6E5 Canada

PHONE (604) 253-3158

Client:

MacGregor, R.A.

28 Ford St

Sault Ste. Marie Ontario P6A 4N4 Canada

Project:

None Given

Report Date:

June 21, 2019

Page

3 of 5

Part: 1 of 3

CERTIFICATE OF ANALYSIS

VAN19001480.1

Table with columns: Method, Analyte, Unit, MDL, and 20 elements (Mo, Cu, Pb, Zn, Ag, Ni, Co, Mn, Fe, As, U, Th, Sr, Cd, Sb, Bi, V, Ca, P, La) with corresponding values for 29 samples (IMA2934 to IMA2963).

This report supersedes all previous preliminary and final reports with this file number dated prior to the date on this certificate. Signature indicates final approval, preliminary reports are unsigned and should be used for reference only.



Bureau Veritas Commodities Canada Ltd.
9050 Shaughnessy St Vancouver British Columbia V6P 6E5 Canada
PHONE (604) 253-3158

Project: None Given
Report Date: June 21, 2019

Page: 3 of 5 Part: 2 of 3

CERTIFICATE OF ANALYSIS

VAN19001480.1

Table with columns: Method, Analyte, Unit, MDL, and 20 elements (Cr, Mg, Ba, Ti, Al, Na, K, W, Zr, Ce, Sn, Y, Nb, Ta, Be, Sc, Li, S, Rb, Hf). Rows include sample IDs like IMA2934 to IMA2963 and their corresponding analytical results.



Bureau Veritas Commodities Canada Ltd.

9050 Shaughnessy St Vancouver British Columbia V6P 6E5 Canada

PHONE (604) 253-3158

Client: MacGregor, R.A.
28 Ford St.
Sault Ste. Marie Ontario P6A 4N4 Canada

Project: None Given
Report Date: June 21, 2019

Page: 3 of 5

Part: 3 of 3

CERTIFICATE OF ANALYSIS

VAN19001480.1

Table with columns: Method, Analyte, Unit, MDL, MA200 In, MA200 Re, MA200 Se, MA200 Te, MA200 Tl. Rows include IMA2934 through IMA2963.



Bureau Veritas Commodities Canada Ltd.

9050 Shaughnessy St Vancouver British Columbia V6P 6E5 Canada

PHONE (604) 253-3158

Client: MacGregor, R.A.
28 Ford St
Sault Ste Marie Ontario P6A 4N4 Canada

Project: None Given
Report Date: June 21, 2019

Page: 5 of 5

Part: 1 of 3

CERTIFICATE OF ANALYSIS

VAN19001480.1

Method	MA200	MA200	MA200	MA200	MA200	MA200	MA200	MA200	MA200	MA200	MA200	MA200	MA200	MA200	MA200	MA200	MA200	MA200	MA200	MA200	MA200
Analyte	Mo	Cu	Pb	Zn	Ag	Ni	Co	Mn	Fe	As	U	Th	Sr	Cd	Sb	Bi	V	Ca	P	La	
Unit	ppm	ppm	ppm	ppm	ppm	ppm	ppm	ppm	%	ppm	ppm	ppm	ppm	ppm	ppm	ppm	ppm	%	%	ppm	
MDL	0.1	0.1	0.1	1	0.1	0.1	0.2	1	0.01	1	0.1	0.1	1	0.1	0.1	0.1	1	0.01	0.001	0.1	
IMA2994	Pulp	1.7	18.5	55.4	13	<0.1	11.7	4.9	49	0.56	3	24.5	138.0	24	<0.1	<0.1	<0.1	12	0.09	0.020	204.3
IMA2995	Pulp	5.7	4.6	136.5	245	<0.1	6.3	6.9	59	1.17	6	56.7	342.0	32	1.3	0.1	<0.1	13	0.06	0.037	336.0
IMA2996	Pulp	9.4	8.4	160.5	338	0.1	3.8	2.2	34	0.94	<1	17.4	87.0	17	1.8	0.2	<0.1	11	0.02	0.014	108.1
IMA2997	Pulp	6.2	4.4	186.2	339	0.1	4.1	2.3	38	0.87	2	21.1	126.5	16	1.8	<0.1	<0.1	12	0.03	0.017	129.1
IMA2998	Pulp	2.8	3.9	119.3	242	0.1	4.5	2.2	40	0.98	1	21.9	116.8	13	1.4	0.1	<0.1	13	0.02	0.018	143.9
IMA2999	Pulp	3.4	2.5	118.2	190	<0.1	5.8	2.6	65	1.37	9	29.0	134.9	12	0.9	<0.1	<0.1	14	0.02	0.016	124.7
IMA3000	Pulp	9.0	3.5	108.7	207	<0.1	5.3	4.0	96	1.80	21	17.3	96.9	7	1.6	0.1	<0.1	10	0.04	0.012	113.0
IMA3001	Pulp	12.1	5.3	177.7	299	<0.1	9.5	7.7	129	2.27	14	101.9	396.0	8	1.4	0.1	<0.1	11	0.04	0.038	412.8
IMA3002	Pulp	3.3	1.5	17.0	30	<0.1	4.1	2.1	33	0.58	2	27.9	133.6	91	<0.1	<0.1	<0.1	12	0.06	0.014	125.7
IMA3003	Pulp	4.6	44.1	232.9	85	0.1	40.2	9.8	61	1.07	<1	186.6	1007.3	27	0.2	<0.1	0.2	14	0.22	0.092	970.1
IMA3004	Pulp	2.4	11.7	66.7	13	<0.1	11.6	3.6	72	0.61	<1	77.4	390.7	25	<0.1	<0.1	<0.1	16	0.16	0.041	429.6
IMA3005	Pulp	1.6	126.5	7.9	29	<0.1	133.5	36.7	196	4.72	11	5.8	10.9	15	<0.1	0.6	0.6	156	0.08	0.041	28.8
IMA3006	Pulp	1.4	52.4	68.3	135	0.1	85.7	14.2	136	2.81	<1	2.2	6.0	51	0.5	0.1	<0.1	41	0.11	0.020	14.2
IMA3007	Pulp	1.4	594.2	84.4	179	0.3	6.6	4.8	48	0.68	3	1.2	2.7	8	1.2	<0.1	<0.1	4	0.05	0.002	6.1
IMA3008	Pulp	2.4	3.3	33.4	13	<0.1	6.9	4.1	50	0.64	5	25.2	77.7	22	<0.1	<0.1	<0.1	7	0.04	0.008	75.9
IMA3009	Pulp	0.6	679.7	82.7	294	0.3	4.2	20.9	355	5.65	3	3.2	13.5	35	1.1	<0.1	<0.1	26	0.44	0.149	41.9
IMA3010	Pulp	0.2	1.1	14.8	426	<0.1	3.7	8.4	3859	14.31	<1	16.8	132.8	126	<0.1	0.2	<0.1	125	8.40	0.004	60.7



Bureau Veritas Commodities Canada Ltd.

9050 Shaughnessy St Vancouver British Columbia V6P 6E5 Canada

PHONE (604) 253-3158

Client: **MacGregor, R.A.**
28 Ford St.
Sault Ste Marie Ontario P6A 4N4 Canada

Project: None Given
Report Date: June 21, 2019

Page 5 of 5

Part: 2 of 3

CERTIFICATE OF ANALYSIS

VAN19001480.1

Method	Analyte	Unit	MDL	MA200	MA200	MA200	MA200	MA200	MA200	MA200	MA200	MA200	MA200	MA200	MA200	MA200	MA200	MA200	MA200	MA200	MA200		
				Cr	Mg	Ba	Ti	Al	Na	K	W	Zr	Ce	Sn	Y	Nb	Ta	Be	Sc	Li	S	Rb	Hf
				ppm	%	ppm	%	%	%	%	ppm	ppm	ppm	ppm	ppm	ppm	ppm	ppm	%	ppm	ppm		
IMA2994	Pulp			88	0.11	851	0.116	3.83	0.099	2.76	0.5	97.6	381	1.4	15.5	10.5	1.1	2	2	4.2	<0.1	127.7	3.0
IMA2995	Pulp			95	0.69	350	0.231	4.58	1.041	1.89	0.4	152.9	636	1.9	31.8	17.3	2.0	1	3	13.2	<0.1	117.9	4.4
IMA2996	Pulp			44	0.43	633	0.160	5.14	0.190	2.84	0.2	128.6	198	1.7	10.2	11.0	1.1	2	2	11.1	0.1	156.5	3.8
IMA2997	Pulp			80	0.37	621	0.188	5.30	0.058	2.86	0.2	140.2	247	2.0	13.6	12.9	1.4	2	2	11.4	<0.1	168.9	4.0
IMA2998	Pulp			36	0.44	573	0.174	5.29	0.047	2.54	0.3	143.1	275	1.9	13.8	12.3	1.2	1	3	12.6	<0.1	144.1	3.8
IMA2999	Pulp			86	0.58	559	0.205	5.26	0.064	2.52	0.3	141.1	236	1.9	13.8	15.8	1.7	1	2	16.7	<0.1	150.1	4.1
IMA3000	Pulp			46	0.77	369	0.178	3.99	0.045	2.10	0.3	102.7	216	1.2	11.1	13.7	1.4	1	2	15.2	<0.1	135.9	2.8
IMA3001	Pulp			179	0.89	235	0.191	3.32	0.028	1.49	0.2	84.0	805	1.4	37.6	20.6	3.0	1	2	15.5	0.1	102.2	2.3
IMA3002	Pulp			45	0.51	170	0.167	5.17	2.662	1.31	0.2	139.3	241	1.3	14.0	12.7	1.4	2	3	8.9	<0.1	81.2	4.4
IMA3003	Pulp			64	0.10	625	0.240	2.96	0.071	2.28	1.3	114.3	1846	1.1	81.2	29.4	2.7	3	2	4.5	0.3	97.4	3.0
IMA3004	Pulp			68	0.14	804	0.215	3.75	0.091	3.00	0.6	133.5	830	1.2	33.9	20.2	2.2	<1	2	6.4	<0.1	137.3	4.0
IMA3005	Pulp			147	0.98	590	0.438	9.93	0.064	4.22	3.1	151.0	66	3.0	11.3	13.1	1.1	4	16	27.7	0.7	232.1	5.1
IMA3006	Pulp			248	0.71	168	0.177	4.38	2.121	0.83	0.6	94.6	29	0.5	4.8	5.5	0.4	1	5	10.7	0.3	52.3	2.6
IMA3007	Pulp			195	0.13	59	0.008	1.10	0.354	0.57	<0.1	9.7	12	<0.1	1.3	1.9	0.1	<1	<1	1.6	0.1	19.9	0.2
IMA3008	Pulp			149	0.54	66	0.058	1.97	0.769	0.56	0.1	44.7	147	0.4	6.5	4.4	0.3	<1	1	7.4	<0.1	30.6	1.1
IMA3009	Pulp			36	1.93	80	0.473	5.20	1.864	0.52	0.8	178.4	90	1.3	15.6	8.3	0.6	1	10	18.1	0.2	35.9	5.0
IMA3010	Pulp			79	3.02	21	0.083	0.57	3.467	0.03	0.4	137.5	162	24.8	51.9	5.1	0.1	24	19	160.0	<0.1	4.1	6.9



BUREAU MINERAL LABORATORIES
VERITAS

www.bureauveritas.com/um

Bureau Veritas Commodities Canada Ltd.
9050 Shaughnessy St Vancouver British Columbia V6P 6E5 Canada
PHONE (604) 253-3158

Client: **MacGregor, R.A.**
28 Ford St.
Sault Ste. Marie Ontario P6A 4N4 Canada

Project: None Given
Report Date: June 21, 2019

Page: 5 of 5

Part: 3 of 3

CERTIFICATE OF ANALYSIS

VAN19001480.1

Method	Analyte	MA200	MA200	MA200	MA200	MA200
		In	Re	Se	Te	T
Unit		ppm	ppm	ppm	ppm	ppm
MDL		0.05	0.005	1	0.5	0.5
IMA2994	Pulp	<0.05	<0.005	<1	<0.5	0.9
IMA2995	Puip	<0.05	<0.005	<1	<0.5	0.7
IMA2996	Pulp	<0.05	<0.005	<1	<0.5	1.1
IMA2997	Pulp	0.06	<0.005	<1	<0.5	1.2
IMA2998	Pulp	<0.05	<0.005	<1	<0.5	1.0
IMA2999	Pulp	<0.05	<0.005	<1	<0.5	1.1
IMA3000	Pulp	0.08	<0.005	<1	<0.5	0.9
IMA3001	Pulp	<0.05	<0.005	<1	<0.5	0.5
IMA3002	Pulp	<0.05	<0.005	<1	<0.5	<0.5
IMA3003	Pulp	<0.05	<0.005	<1	<0.5	0.7
IMA3004	Pulp	<0.05	<0.005	<1	<0.5	0.9
IMA3005	Pulp	0.09	0.008	2	<0.5	1.7
IMA3006	Pulp	<0.05	<0.005	<1	<0.5	<0.5
IMA3007	Pulp	<0.05	<0.005	<1	<0.5	<0.5
IMA3008	Pulp	<0.05	<0.005	<1	<0.5	<0.5
IMA3009	Pulp	0.07	<0.005	<1	<0.5	<0.5
IMA3010	Pulp	0.31	<0.005	<1	0.9	<0.5



Bureau Veritas Commodities Canada Ltd.

9050 Shaughnessy St Vancouver British Columbia V6P 6E5 Canada
PHONE (604) 253-3158

Client: **MacGregor, R.A.**
28 Ford St
Sault Ste. Marie Ontario P6A 4N4 Canada

Project: None Given
Report Date: June 21, 2019

Page 1 of 1

Part: 1 of 3

QUALITY CONTROL REPORT

VAN19001480.1

Method	Analyte	Unit	MA200	MA200	MA200	MA200	MA200	MA200	MA200	MA200	MA200	MA200	MA200	MA200	MA200	MA200	MA200	MA200	MA200	MA200	MA200	
			Mo	Cu	Pb	Zn	Ag	Ni	Co	Mn	Fe	As	U	Th	Sr	Cd	Sb	Bi	V	Ca	P	La
		MDL	ppm	ppm	ppm	ppm	ppm	ppm	ppm	%	ppm	ppm	ppm	ppm	ppm	ppm	ppm	ppm	%	%	ppm	
Pulp Duplicates																						
IMA2926	Pulp		3.0	5.3	143.8	219	0.2	4.0	7.2	28	0.44	6	49.9	234.8	21	1.6	<0.1	0.2	9	0.05	0.025	299.3
REP IMA2926	QC		2.9	6.0	141.3	220	0.1	4.3	7.2	28	0.44	5	48.1	237.5	21	1.1	<0.1	0.3	9	0.05	0.028	294.2
IMA2962	Pulp		3.3	22.9	101.9	7	<0.1	8.3	8.9	108	0.91	3	117.9	721.1	25	<0.1	0.1	0.4	18	0.14	0.078	691.3
REP IMA2962	QC		3.8	23.4	109.0	8	0.2	8.9	7.8	113	0.95	4	128.8	717.7	26	0.3	0.2	0.4	18	0.15	0.075	700.0
IMA2997	Pulp		8.2	4.4	188.2	339	0.1	4.1	2.3	38	0.87	2	21.1	128.5	16	1.8	<0.1	<0.1	12	0.03	0.017	129.1
REP IMA2997	QC		4.8	4.0	188.8	330	<0.1	4.4	3.0	37	0.88	2	21.0	121.1	15	1.7	0.1	<0.1	12	0.03	0.015	131.7
Reference Materials																						
STD OREAS25A-4A	Standard		2.6	38.0	24.1	51	0.1	45.5	7.2	473	6.59	9	2.8	15.8	50	0.2	0.6	0.4	157	0.29	0.048	22.0
STD OREAS25A-4A	Standard		2.2	34.2	23.1	45	<0.1	44.1	7.5	480	8.42	9	2.8	15.3	44	0.2	0.6	0.4	154	0.28	0.045	20.0
STD OREAS25A-4A	Standard		2.9	33.7	24.0	44	<0.1	49.3	7.8	498	6.55	9	2.8	17.0	46	<0.1	0.6	0.3	158	0.30	0.053	22.7
STD OREAS45E	Standard		2.8	777.8	17.7	47	0.4	488.1	80.3	532	24.41	16	2.5	12.5	16	<0.1	1.1	0.3	328	0.08	0.036	10.4
STD OREAS45E	Standard		2.2	785.3	18.8	51	0.3	470.3	58.0	540	24.69	16	2.5	13.3	16	0.1	0.9	0.3	328	0.08	0.032	11.0
STD OREAS45E	Standard		2.2	744.8	17.0	41	0.3	452.0	59.3	519	24.09	13	2.3	15.3	15	<0.1	0.9	0.3	310	0.08	0.030	10.2
STD OREAS25A-4A Expected			2.41	33.9	25.2	44.4		45.8	7.7	480	6.6	9.94	2.94	15.8	48.5		0.85	0.37	157	0.301	0.048	21.8
STD OREAS45E Expected			2.4	780	18.2	48.7	0.311	454	57	570	24.12	18.3	2.41	12.9	15.9	0.08	1	0.28	322	0.085	0.034	11
BLK	Blank		<0.1	<0.1	<0.1	<1	<0.1	<0.1	<0.2	<1	<0.01	<1	<0.1	<0.1	<1	<0.1	<0.1	<0.1	<1	<0.01	<0.001	<0.1
BLK	Blank		<0.1	0.2	<0.1	<1	<0.1	<0.1	<0.2	<1	<0.01	<1	<0.1	<0.1	<1	<0.1	<0.1	<0.1	<1	<0.01	<0.001	<0.1
BLK	Blank		<0.1	<0.1	<0.1	<1	<0.1	<0.1	<0.2	<1	<0.01	<1	<0.1	<0.1	<1	<0.1	<0.1	<0.1	<1	<0.01	<0.001	<0.1



Bureau Veritas Commodities Canada Ltd.

9050 Shaughnessy St Vancouver British Columbia V6P 6E5 Canada
PHONE (604) 253-3158

Client: **MacGregor, R.A.**
28 Ford St.
Sault Ste. Marie Ontario P8A 4N4 Canada

Project: None Given
Report Date: June 21, 2019

Page: 1 of 1

Part 2 of 3

QUALITY CONTROL REPORT

VAN19001480.1

Method	Analyte	Unit	MDL	MA200	MA200	MA200	MA200	MA200	MA200	MA200	MA200	MA200	MA200	MA200	MA200	MA200	MA200	MA200	MA200	MA200	MA200		
				Cr	Mg	Ba	Tl	Al	Na	K	W	Zr	Ce	Sn	Y	Nb	Ta	Be	Sc	Li	S	Rb	Hf
				ppm	%	ppm	%	%	%	%	ppm	ppm	ppm	ppm	ppm	ppm	ppm	ppm	%	ppm	ppm		
Pulp Duplicates																							
IMA2926	Pulp			64	0.11	739	0.111	3.97	0.058	4.20	0.6	92.1	525	1.5	23.5	12.2	1.2	1	2	4.5	<0.1	177.3	2.6
REP IMA2926	QC			63	0.10	725	0.107	3.83	0.055	4.24	0.5	90.1	517	1.2	22.4	11.2	1.2	<1	2	4.8	<0.1	185.0	2.6
IMA2962	Pulp			104	0.13	842	0.249	3.86	0.055	4.36	0.5	189.4	1293	1.4	52.8	25.0	2.8	2	3	4.4	0.2	198.5	5.0
REP IMA2962	QC			107	0.14	880	0.257	3.85	0.055	4.11	0.6	170.4	1282	1.4	58.5	26.3	2.9	1	3	4.1	0.2	195.3	5.2
IMA2997	Pulp			80	0.37	621	0.188	5.30	0.058	2.88	0.2	140.2	247	2.0	13.8	12.9	1.4	2	2	11.4	<0.1	166.9	4.0
REP IMA2997	QC			78	0.37	648	0.190	5.40	0.058	2.83	0.2	141.8	251	2.1	13.7	13.7	1.4	1	2	10.7	<0.1	165.2	4.5
Reference Materials																							
STD OREAS25A-4A	Standard			107	0.34	150	0.932	9.49	0.140	0.52	1.8	153.2	49	3.8	10.4	19.3	1.4	<1	13	37.7	<0.1	59.2	4.1
STD OREAS25A-4A	Standard			106	0.32	132	0.920	9.20	0.142	0.49	1.8	141.0	46	3.8	10.2	18.0	1.3	<1	12	40.8	<0.1	54.9	3.8
STD OREAS25A-4A	Standard			120	0.34	150	0.989	9.33	0.126	0.49	2.0	153.9	50	3.8	10.7	20.4	1.5	1	13	37.1	<0.1	61.5	4.3
STD OREAS45E	Standard			1008	0.18	252	0.538	7.16	0.053	0.36	1.1	100.4	25	1.4	7.7	6.2	0.5	<1	97	7.2	<0.1	20.2	3.0
STD OREAS45E	Standard			988	0.18	255	0.541	7.15	0.057	0.35	0.9	100.3	24	1.2	7.9	6.2	0.6	<1	101	6.8	<0.1	20.8	3.0
STD OREAS45E	Standard			988	0.18	242	0.496	6.77	0.052	0.31	1.0	105.2	22	1.4	7.4	5.9	0.5	<1	91	6.6	<0.1	20.4	2.6
STD OREAS25A-4A Expected				115	0.327	147	0.93	8.87	0.131	0.482	2	155	47.3	4.06	10.5	20.9	1.4	0.93	13.7	36.7	0.047	61	4.14
STD OREAS45E Expected				979	0.156	252	0.559	6.78	0.059	0.324	1.07	97	23.5	1.32	8.28	6.8	0.54		93	6.58	0.046	21.2	3.11
BLK	Blank			2	<0.01	<1	<0.001	<0.01	0.001	<0.01	<0.1	<0.1	<1	<0.1	<0.1	<0.1	<0.1	<1	<1	<0.1	<0.1	<0.1	<0.1
BLK	Blank			<1	<0.01	<1	<0.001	<0.01	0.001	<0.01	<0.1	<0.1	<1	<0.1	<0.1	<0.1	<0.1	<1	<1	<0.1	<0.1	<0.1	<0.1
BLK	Blank			<1	<0.01	<1	<0.001	<0.01	0.001	<0.01	<0.1	<0.1	<1	<0.1	<0.1	<0.1	<0.1	<1	<1	<0.1	<0.1	0.1	<0.1



Bureau Veritas Commodities Canada Ltd.
9050 Shaughnessy St Vancouver British Columbia V6P 6E5 Canada
PHONE (604) 253-3158

Client: MacGregor, R.A.
28 Ford St
Sault Ste Marie Ontario P6A 4N4 Canada

Project: None Given
Report Date: June 21, 2019

Page: 1 of 1

Part: 3 of 3

QUALITY CONTROL REPORT VAN19001480.1

Method	Analyte	MA200	MA200	MA200	MA200	MA200
		In	Re	Se	Te	Th
Unit		ppm	ppm	ppm	ppm	ppm
MDL		0.06	0.006	1	0.6	0.6
Pulp Duplicates						
IMA2926	Pulp	<0.05	<0.005	<1	<0.5	0.9
REP IMA2926	QC	<0.05	<0.005	<1	<0.5	0.8
IMA2962	Pulp	<0.05	<0.005	2	<0.5	1.0
REP IMA2962	QC	<0.05	<0.005	1	<0.5	1.1
IMA2997	Pulp	0.06	<0.005	<1	<0.5	1.2
REP IMA2997	QC	<0.05	<0.005	<1	<0.5	1.2
Reference Materials						
STD OREAS25A-4A	Standard	0.12	<0.005	2	<0.5	<0.5
STD OREAS25A-4A	Standard	0.11	<0.005	2	<0.5	<0.5
STD OREAS25A-4A	Standard	0.10	<0.005	2	<0.5	<0.5
STD OREAS45E	Standard	0.11	<0.005	2	<0.5	<0.5
STD OREAS45E	Standard	0.10	<0.005	3	<0.5	<0.5
STD OREAS45E	Standard	0.13	<0.005	2	<0.5	<0.5
STD OREAS25A-4A Expected		0.09		2.4		0.35
STD OREAS45E Expected		0.099		2.97	0.1	0.15
BLK	Blank	<0.05	<0.005	<1	<0.5	<0.5
BLK	Blank	<0.05	<0.005	1	<0.5	<0.5
BLK	Blank	<0.05	<0.005	<1	<0.5	<0.5



BUREAU MINERAL LABORATORIES
VERITAS

www.bureauveritas.com/um

Bureau Veritas Commodities Canada Ltd.
9050 Shaughnessy St Vancouver British Columbia V6P 6E5 Canada
PHONE (604) 253-3158

Client: Skead Holdings Ltd.
28 Ford St.
Sault Ste Marie Ontario P6A 4N4 Canada

Submitted By: Robert MacGregor
Receiving Lab: Canada-Vancouver
Received: May 13, 2019
Report Date: June 28, 2019
Page: 1 of 5

CERTIFICATE OF ANALYSIS

VAN19001087.1

CLIENT JOB INFORMATION

Project: None Given
Shipment ID:
P.O. Number:
Number of Samples: 114

SAMPLE PREPARATION AND ANALYTICAL PROCEDURES

Procedure Code	Number of Samples	Code Description	Test Wgt (g)	Report Status	Lab
SLBHP	113	Sorting, labelling and boxing samples received as pulps			VAN
LF100	113	Refractory and REEs by fusion and ICP-MS analysis	0.2	Completed	VAN

SAMPLE DISPOSAL

IMM-PLP Return immediately after analysis

ADDITIONAL COMMENTS

Bureau Veritas does not accept responsibility for samples left at the laboratory after 90 days without prior written instructions for sample storage or return.

Invoice To: Skead Holdings Ltd.
28 Ford St.
Sault Ste. Marie Ontario P6A 4N4
Canada

CC:

JEFFREY CANNON
Group Manager, Department Sault Ste Marie

This report supersedes all previous preliminary and final reports with this file number dated prior to the date on this certificate. Signature indicates final approval, preliminary reports are unsigned and should be used for reference only. All results are considered the confidential property of the client. Bureau Veritas assumes the liabilities for actual cost of analysis only. Results apply to samples as submitted. ** astensk indicates that an analytical result could not be provided due to unusually high levels of interference from other elements.



Bureau Veritas Commodities Canada Ltd.

9050 Shaughnessy St Vancouver British Columbia V6P 6E5 Canada
PHONE (604) 253-3158

Client: Skead Holdings Ltd.
28 Ford St.
Sault Ste Marie Ontario P6A 4N4 Canada

Project: None Given
Report Date: June 28, 2019

Page: 4 of 5

Part: 1 of 2

CERTIFICATE OF ANALYSIS

VAN19001087.1

Method Analyte Unit MDL	LF100	LF100	LF100	LF100	LF100	LF100	LF100	LF100	LF100	LF100	LF100	LF100	LF100	LF100	LF100	LF100	LF100	LF100	LF100	LF100	LF100
	Ba	Be	Co	Ca	Ga	Hf	Nb	Rb	Sn	Sr	Ta	Th	U	V	W	Zr	Y	La	Ce	Pr	
	ppm	ppm	ppm	ppm	ppm	ppm	ppm	ppm	ppm	ppm	ppm	ppm	ppm	ppm	ppm	ppm	ppm	ppm	ppm	ppm	ppm
	1	1	0.2	0.1	0.5	0.1	0.1	0.1	1	0.5	0.1	0.2	0.1	8	0.5	0.1	0.1	0.1	0.1	0.1	0.02
REE 314	Rock Pulp	348	2	12.2	1.9	11.8	7.1	86.8	184.7	3	14.9	7.9	1181.5	337.5	<8	0.9	253.7	145.3	1179.7	2123.6	216.42
REE 315	Rock Pulp	403	<1	16.8	1.0	11.0	5.5	44.2	163.1	3	18.9	5.7	845.1	178.8	<8	0.9	192.6	73.8	878.7	1554.2	159.07
REE 316	Rock Pulp	333	3	28.2	1.7	12.3	6.8	73.1	189.9	4	16.1	9.4	1575.6	574.8	<8	1.4	252.5	209.6	1850.8	3055.1	310.77
REE 317	Rock Pulp	749	<1	9.8	0.5	8.4	4.9	39.5	157.9	2	23.4	4.8	495.4	94.5	<8	4.3	175.4	61.1	559.9	1017.1	102.13
REE 318	Rock Pulp	826	<1	15.1	0.6	11.0	4.5	34.8	178.2	1	24.4	4.3	428.0	83.2	<8	1.9	154.3	51.1	502.1	880.4	89.14
REE 319	Rock Pulp	473	2	17.2	1.8	10.4	8.5	92.1	183.8	3	26.0	11.4	1401.4	358.3	<8	1.6	234.8	150.3	1555.5	2743.4	284.59
REE 320	Rock Pulp	782	<1	17.1	0.7	11.2	6.3	51.9	176.9	2	24.2	6.2	547.4	100.4	<8	2.0	229.9	80.6	854.2	1175.0	117.58
REE 321	Rock Pulp	650	2	5.9	0.8	10.5	4.9	30.4	184.2	1	23.3	3.7	283.1	48.4	<8	1.8	170.7	32.6	369.0	683.1	87.06
REE 322	Rock Pulp	821	<1	12.6	0.8	9.7	4.8	43.0	177.3	2	26.7	5.0	477.9	98.0	<8	1.6	166.3	53.9	801.0	1060.5	107.27
REE 323	Rock Pulp	414	<1	6.4	0.7	12.7	3.3	25.7	165.3	1	15.4	3.0	359.4	107.2	<8	0.8	117.6	36.1	380.8	690.8	88.49
REE 324	Rock Pulp	659	<1	20.6	0.4	4.9	4.2	59.2	140.0	1	24.1	7.8	878.2	114.8	<8	4.1	147.7	88.0	1135.0	2008.2	205.21
REE 325	Rock Pulp	973	<1	14.5	0.9	13.5	6.4	43.0	228.8	3	33.1	4.7	262.7	52.3	31	2.6	236.1	43.8	336.2	596.2	57.19
REE 326	Rock Pulp	465	5	9.3	0.8	13.0	3.9	41.3	173.9	2	19.0	5.5	830.5	143.2	<8	1.0	135.6	61.4	835.9	1188.2	118.66
REE 327	Rock Pulp	320	<1	22.2	0.5	11.8	4.3	75.2	138.8	2	19.7	9.7	1158.8	318.4	38	1.9	158.1	110.1	1288.0	2293.2	235.85
REE 328	Rock Pulp	357	<1	42.5	1.2	7.3	6.8	81.4	137.3	3	28.5	9.8	748.4	204.4	15	0.8	240.6	78.3	889.8	1544.4	155.04
REE 329	Rock Pulp	287	1	13.2	0.9	7.8	5.8	64.8	121.1	2	20.9	7.8	651.4	150.2	28	1.9	205.9	64.9	754.3	1327.6	134.41
REE 330	Rock Pulp	355	2	10.2	1.0	11.0	11.8	89.5	165.1	3	20.1	11.2	800.6	118.9	28	2.5	429.2	72.9	691.4	1239.3	124.88
REE 331	Rock Pulp	342	4	5.5	1.4	10.0	11.6	87.0	189.6	3	17.8	7.9	443.8	83.3	28	1.1	413.7	55.9	500.4	897.0	89.13
REE 332	Rock Pulp	326	3	10.6	1.1	10.4	9.5	97.8	181.0	4	20.5	12.1	983.7	228.4	27	2.6	351.2	111.5	1084.2	1922.4	195.92
REE 333	Rock Pulp	262	2	23.5	1.0	8.8	10.3	159.6	138.0	5	24.2	20.9	2437.2	874.7	29	2.2	366.1	258.2	2827.1	4781.8	482.05
REE 334	Rock Pulp	294	4	10.1	0.8	10.5	6.2	40.1	147.8	3	16.5	4.6	401.1	116.6	22	2.6	209.6	45.9	429.2	747.6	74.47
REE 335	Rock Pulp	315	<1	7.5	0.7	9.9	7.8	55.3	154.5	3	18.8	6.7	470.3	112.2	20	1.5	271.6	54.4	533.5	945.2	94.77
REE 336	Rock Pulp	325	<1	9.9	0.8	8.8	4.7	43.0	147.7	2	17.0	5.2	368.1	79.8	17	1.1	161.9	41.5	409.6	740.8	72.83
REE 337	Rock Pulp	288	2	16.9	0.8	9.2	7.2	73.3	140.9	3	14.1	8.8	539.6	123.8	22	1.4	254.6	68.0	653.7	1152.5	115.87
REE 338	Rock Pulp	291	5	8.9	0.8	12.6	5.5	42.8	183.0	3	14.7	5.3	312.3	78.1	20	1.0	189.1	40.6	355.2	836.1	83.28
REE 339	Rock Pulp	284	2	40.7	0.8	7.6	4.9	67.7	119.5	2	17.9	8.2	577.7	122.3	28	1.9	178.1	64.8	748.0	1309.9	131.71
REE 340	Rock Pulp	354	1	20.0	1.3	10.1	5.0	65.6	156.7	3	16.6	7.8	936.8	224.1	19	1.8	175.9	93.8	995.0	1720.2	178.10
REE 341	Rock Pulp	832	2	10.9	0.5	9.5	3.9	23.3	193.1	1	21.9	2.8	140.3	21.8	17	2.0	137.9	35.8	177.8	304.8	30.27
REE 342	Rock Pulp	535	<1	22.2	0.4	5.4	8.8	53.6	123.6	<1	24.0	5.9	404.7	71.5	22	4.4	318.0	41.7	447.4	792.2	79.68
REE343	Rock Pulp	764	5	16.9	0.9	15.7	7.9	24.6	237.4	3	26.1	2.6	152.8	31.3	27	1.9	284.6	24.6	166.4	289.3	28.70



Bureau Veritas Commodities Canada Ltd.

9050 Shaughnessy St Vancouver British Columbia V6P 6E5 Canada
PHONE (604) 253-3158

Client: **Skead Holdings Ltd.**
28 Ford St
Sault Ste. Marie Ontario P6A 4N4 Canada

Project: None Given
Report Date: June 28, 2019

Page: 4 of 5

Part: 2 of 2

CERTIFICATE OF ANALYSIS

VAN19001087.1

Method	Analyte	LF100	LF100	LF100	LF100	LF100	LF100	LF100	LF100	LF100	LF100	LF100
		Nd	Sm	Eu	Gd	Tb	Dy	Ho	Er	Tm	Yb	Lu
Unit		ppm	ppm	ppm	ppm	ppm	ppm	ppm	ppm	ppm	ppm	ppm
MDL		0.3	0.06	0.02	0.06	0.01	0.06	0.02	0.03	0.01	0.06	0.01
REE 314	Rock Pulp	898.0	103.15	5.96	88.58	7.64	34.37	5.31	12.78	1.80	9.35	1.11
REE 315	Rock Pulp	500.8	72.11	3.98	43.13	4.73	20.02	2.89	6.39	0.80	4.67	0.81
REE 316	Rock Pulp	979.5	148.44	7.81	96.12	11.29	51.03	8.19	19.11	2.31	13.15	1.82
REE 317	Rock Pulp	315.5	45.08	2.72	29.54	3.47	15.40	2.34	5.72	0.70	4.03	0.51
REE 318	Rock Pulp	280.1	41.70	2.31	26.10	2.98	12.97	1.91	4.48	0.55	3.43	0.40
REE 319	Rock Pulp	907.3	129.85	8.32	80.97	9.05	38.80	5.67	12.94	1.57	8.84	1.09
REE 320	Rock Pulp	373.0	52.75	3.02	33.58	3.89	15.41	2.29	5.39	0.85	3.99	0.52
REE 321	Rock Pulp	205.3	29.58	1.79	17.35	2.01	8.39	1.28	2.75	0.35	2.13	0.26
REE 322	Rock Pulp	341.4	48.47	2.85	30.61	3.33	14.35	2.13	4.78	0.63	3.82	0.43
REE 323	Rock Pulp	215.4	31.30	1.38	19.07	2.22	9.57	1.43	3.35	0.44	2.80	0.33
REE 324	Rock Pulp	647.9	93.01	4.75	55.34	6.18	25.39	3.58	7.63	0.93	5.68	0.85
REE 325	Rock Pulp	181.0	26.72	1.81	17.61	2.12	9.42	1.51	4.00	0.51	3.10	0.41
REE 326	Rock Pulp	372.3	54.37	2.28	35.08	3.80	15.98	2.45	5.58	0.66	4.05	0.49
REE 327	Rock Pulp	744.9	107.62	4.59	72.41	7.28	30.66	4.47	10.17	1.27	7.18	0.90
REE 328	Rock Pulp	498.2	89.37	4.14	42.77	4.82	20.53	3.03	7.12	0.98	5.83	0.74
REE 329	Rock Pulp	433.5	80.89	3.54	38.20	4.08	17.01	2.48	5.80	0.71	4.43	0.55
REE330	Rock Pulp	398.8	55.70	2.77	38.78	4.03	17.81	2.65	6.89	0.81	5.27	0.88
REE 331	Rock Pulp	283.6	38.48	1.91	28.27	2.92	13.07	2.00	5.11	0.65	3.98	0.55
REE 332	Rock Pulp	832.9	89.76	4.58	57.40	6.21	28.80	3.98	9.97	1.25	7.25	0.95
REE 333	Rock Pulp	1539.1	222.08	12.81	143.59	15.42	87.39	9.68	23.72	2.87	17.11	2.13
REE 334	Rock Pulp	239.4	33.74	1.95	21.87	2.48	11.51	1.72	4.83	0.59	3.59	0.47
REE 335	Rock Pulp	289.8	41.88	2.32	28.42	2.98	12.79	2.05	4.96	0.83	3.81	0.51
REE 336	Rock Pulp	232.4	32.37	1.84	20.62	2.32	10.35	1.59	3.87	0.49	3.08	0.43
REE 337	Rock Pulp	389.1	51.59	2.78	34.39	3.69	16.28	2.42	6.03	0.81	4.82	0.65
REE 338	Rock Pulp	201.3	29.40	1.47	19.28	2.14	9.45	1.50	3.74	0.46	3.15	0.41
REE 339	Rock Pulp	423.9	59.94	3.48	37.99	4.05	18.88	2.39	5.68	0.71	4.28	0.57
REE 340	Rock Pulp	567.6	80.78	4.41	53.30	5.83	24.32	3.54	8.59	1.03	8.18	0.80
REE 341	Rock Pulp	94.6	14.02	0.88	9.63	1.29	8.57	1.21	3.05	0.40	2.28	0.32
REE 342	Rock Pulp	254.0	38.59	2.29	23.66	2.53	10.91	1.57	3.92	0.45	2.87	0.39
REE 343	Rock Pulp	92.2	13.40	0.94	8.76	1.09	5.05	0.86	2.36	0.29	2.00	0.31

This report supersedes all previous preliminary and final reports with this file number dated prior to the date on this certificate. Signature indicates final approval. preliminary reports are unsigned and should be used for reference only.



Bureau Veritas Commodities Canada Ltd.

9050 Shaughnessy St Vancouver British Columbia V6P 6E5 Canada
PHONE (604) 253-3158

Client: Skead Holdings Ltd.
28 Ford St.
Sault Ste. Marie Ontario P6A 4N4 Canada

Project: None Given
Report Date: June 28, 2019

Page 5 of 5

Part: 1 of 2

CERTIFICATE OF ANALYSIS

VAN19001087.1

Method	Analyte	LF100	LF100	LF100	LF100	LF100	LF100	LF100	LF100	LF100	LF100	LF100	LF100	LF100	LF100	LF100	LF100	LF100	LF100	LF100	
		Ba	Be	Co	Ca	Ga	Hf	Nb	Rb	Sn	Sr	Ta	Th	U	V	W	Zr	Y	La	Ce	Pr
Unit		ppm	ppm	ppm	ppm	ppm	ppm	ppm	ppm	ppm	ppm	ppm	ppm	ppm	ppm	ppm	ppm	ppm	ppm	ppm	ppm
MDL		1	1	0.2	0.1	0.6	0.1	0.1	0.1	1	0.6	0.1	0.2	0.1	8	0.6	0.1	0.1	0.1	0.1	0.02
REE 344	Rock Pulp	350	1	48.9	1.4	12.5	8.0	53.9	185.8	5	15.5	8.9	908.8	273.1	27	1.5	218.8	97.2	955.1	1697.6	174.28
REE 345	Rock Pulp	623	2	33.2	0.5	4.8	5.5	82.0	137.1	2	44.2	11.0	1735.1	413.2	25	3.8	199.2	154.9	1888.4	3172.2	324.91
REE 348	Rock Pulp	1151	<1	5.8	0.7	5.1	3.5	43.0	209.9	2	28.8	5.8	422.9	88.7	18	1.3	133.8	48.8	483.3	833.8	83.87
REE 347	Rock Pulp	850	<1	44.0	0.8	8.5	9.7	112.2	155.4	2	35.8	14.5	1835.8	263.9	22	2.0	343.9	144.9	1782.8	3209.3	326.70
REE 348	Rock Pulp	702	<1	11.7	0.7	8.1	8.9	88.1	189.0	2	28.0	8.6	778.5	129.1	29	2.0	255.9	77.3	924.2	1623.8	165.85
REE 349	Rock Pulp	784	1	39.2	0.7	9.2	5.5	81.4	183.7	3	25.9	9.2	832.2	282.0	14	1.5	197.1	101.2	1000.1	1774.1	180.49
REE 350	Rock Pulp	307	7	77.1	0.3	1.3	8.3	102.2	79.4	5	39.5	15.2	4889.3	3030.3	20	3.8	237.1	520.0	4941.8	9552.5	891.26
REE 351	Rock Pulp	815	1	18.0	0.5	7.5	5.1	31.3	190.0	<1	23.7	4.1	369.8	80.4	10	3.4	183.8	40.4	351.2	598.8	59.57
REE 352	Rock Pulp	241	<1	10.9	1.5	11.3	6.9	79.8	172.6	4	10.5	9.3	829.0	193.5	21	1.5	230.5	88.8	890.3	1581.8	160.88
REE 353	Rock Pulp	509	<1	7.4	1.8	11.8	11.5	76.7	198.9	4	17.7	8.7	599.5	130.8	20	1.1	418.4	86.3	817.9	1098.2	110.50
REE 354	Rock Pulp	484	<1	5.9	1.7	12.2	8.1	52.6	199.4	3	15.5	8.2	499.2	131.6	18	0.8	281.8	54.5	488.3	878.1	88.57
REE 355	Rock Pulp	388	<1	9.7	1.1	8.3	3.0	28.0	138.6	2	23.5	3.4	381.0	93.1	14	1.3	105.5	38.7	404.4	720.6	72.93
REE 358	Rock Pulp	521	2	10.4	1.5	18.6	4.3	12.5	201.0	2	21.6	1.3	78.6	17.6	24	<0.5	152.3	13.7	98.3	189.9	16.84
REE 357	Rock Pulp	415	4	10.5	2.6	20.6	8.8	81.4	285.2	5	12.8	10.5	793.5	258.4	33	2.4	241.5	87.5	897.7	1265.4	130.53
REE 358	Rock Pulp	844	<1	6.5	0.7	4.5	4.6	58.2	152.2	2	28.1	7.2	1187.3	287.5	11	1.4	187.4	110.8	1402.0	2453.1	245.53
REE 359	Rock Pulp	770	<1	9.8	0.8	5.2	8.8	46.3	137.1	<1	32.9	5.4	818.8	143.2	18	2.3	234.8	87.8	941.7	1651.4	170.15
REE 380	Rock Pulp	89	8	1.8	0.9	29.0	22.5	33.7	119.8	2	88.2	0.7	880.1	807.2	10	0.8	740.0	125.8	319.8	881.9	70.21
REE 361	Rock Pulp	834	8	24.2	4.3	22.3	3.0	29.9	200.3	4	433.4	2.3	38.7	14.3	67	0.9	97.1	187.7	747.1	956.8	79.06
REE 362	Rock Pulp	845	<1	14.5	0.6	5.2	8.8	90.0	150.0	2	23.0	11.0	875.3	144.4	19	2.0	242.8	78.9	1028.0	1810.1	185.23
REE 363	Rock Pulp	884	<1	23.2	0.6	8.8	6.3	54.5	170.5	2	20.2	5.8	484.6	75.1	22	5.3	211.8	47.4	383.8	709.2	89.38
REE 364	Rock Pulp	838	<1	4.3	0.3	3.4	4.8	49.4	182.9	<1	30.4	5.4	343.4	57.3	15	1.8	187.0	39.8	580.2	1081.8	112.37
REE 365	Rock Pulp	858	1	5.0	0.4	4.1	10.0	94.2	187.0	<1	35.8	11.1	828.1	143.6	9	3.2	344.5	87.7	779.0	1421.0	149.89
REE 366	Rock Pulp	348	<1	7.0	5.7	3.3	<0.1	11.8	117.6	<1	3708.3	<0.1	1.1	0.7	10	<0.5	2.0	243.9	364.5	744.7	82.82
REE 367	Rock Pulp	223	<1	<0.2	<0.1	<0.5	<0.1	<0.1	0.7	<1	4449.5	<0.1	1.4	2.0	<8	0.8	0.6	269.8	401.6	820.1	92.28



Bureau Veritas Commodities Canada Ltd.
9050 Shaughnessy St Vancouver British Columbia V6P 6E5 Canada
PHONE (604) 253-3158

Client: **Skead Holdings Ltd.**
28 Ford St.
Sault Ste Marie Ontario P6A 4N4 Canada

Project: None Given
Report Date: June 28, 2019

Page: 5 of 5

Part: 2 of 2

CERTIFICATE OF ANALYSIS

VAN19001087.1

Method	Analyte	LF100	LF100	LF100	LF100	LF100	LF100	LF100	LF100	LF100	LF100	LF100
		Nd	Sm	Eu	Gd	Tb	Dy	Ho	Er	Tm	Yb	Lu
Unit		ppm	ppm	ppm	ppm	ppm	ppm	ppm	ppm	ppm	ppm	ppm
MDL		0.3	0.05	0.02	0.06	0.01	0.06	0.02	0.03	0.01	0.06	0.01
REE 344	Rock Pulp	555.8	80.07	4.41	51.43	5.97	24.59	3.71	8.85	1.08	5.95	0.78
REE 345	Rock Pulp	1033.9	147.52	8.89	94.22	10.25	42.55	6.12	14.08	1.72	10.04	1.23
REE 346	Rock Pulp	264.7	39.17	1.78	25.38	2.90	12.23	1.84	4.51	0.51	3.27	0.41
REE 347	Rock Pulp	1034.3	149.99	9.79	98.65	10.41	41.95	5.80	12.58	1.49	8.68	1.05
REE 348	Rock Pulp	527.1	78.58	4.98	48.45	5.28	22.09	2.88	8.80	0.79	5.05	0.62
REE 349	Rock Pulp	570.0	84.80	4.00	54.85	8.20	28.75	3.98	9.38	1.13	8.72	0.81
REE 350	Rock Pulp	2883.9	432.42	20.78	289.75	35.24	157.08	23.44	54.83	7.15	40.87	4.84
REE 351	Rock Pulp	190.1	27.79	1.72	17.98	2.14	9.50	1.48	3.78	0.49	2.83	0.38
REE 352	Rock Pulp	511.5	73.95	3.52	50.72	5.51	22.91	3.47	8.45	1.02	6.10	0.80
REE 353	Rock Pulp	344.9	49.83	2.22	33.42	3.82	18.53	2.50	8.49	0.83	4.98	0.68
REE 354	Rock Pulp	282.3	42.15	2.11	27.53	3.11	13.90	2.12	5.11	0.85	4.20	0.57
REE 355	Rock Pulp	228.7	32.85	1.83	21.20	2.47	10.45	1.47	3.58	0.45	2.59	0.35
REE 358	Rock Pulp	53.0	7.73	0.53	5.15	0.80	2.83	0.51	1.27	0.17	1.12	0.17
REE 357	Rock Pulp	407.8	80.25	3.24	41.35	5.15	23.00	3.77	9.34	1.18	8.98	0.89
REE 358	Rock Pulp	782.8	111.27	4.07	89.21	7.50	30.75	4.31	9.54	1.17	7.08	0.88
REE 359	Rock Pulp	529.5	77.39	3.08	50.82	5.70	23.34	3.45	8.08	0.92	5.41	0.70
REE 380	Rock Pulp	224.0	38.74	1.20	29.99	4.48	24.87	5.21	15.33	2.09	11.71	1.51
REE 381	Rock Pulp	222.5	28.01	3.48	22.48	3.53	22.54	5.17	18.59	2.84	17.15	2.38
REE 382	Rock Pulp	584.1	83.82	4.68	52.27	5.52	20.80	2.98	8.80	0.81	4.88	0.64
REE 383	Rock Pulp	219.8	32.24	1.91	21.83	2.87	12.15	1.94	4.48	0.57	3.14	0.41
REE 384	Rock Pulp	359.8	50.27	4.10	28.19	2.94	11.49	1.51	3.38	0.47	2.70	0.35
REE 385	Rock Pulp	477.1	87.32	5.30	40.81	4.38	18.20	2.81	5.85	0.78	4.81	0.83
REE 388	Rock Pulp	292.4	47.53	9.22	41.85	6.56	40.38	9.30	30.34	4.53	30.50	4.21
REE 387	Rock Pulp	328.0	52.64	10.38	47.59	7.40	48.42	10.51	34.89	5.18	34.29	4.73



Bureau Veritas Commodities Canada Ltd.
 9050 Shaughnessy St Vancouver British Columbia V6P 6E5 Canada
 PHONE (604) 253-3158

Client: **Skead Holdings Ltd.**
 28 Ford St.
 Sault Ste Marie Ontario P6A 4N4 Canada

Project: None Given
 Report Date: June 28, 2019

Page: 1 of 2 Part: 1 of 2

QUALITY CONTROL REPORT

VAN19001087.1

Method	Analyte	LF100	LF100	LF100	LF100	LF100	LF100	LF100	LF100	LF100	LF100	LF100	LF100	LF100	LF100	LF100	LF100	LF100	LF100	LF100	
		Ba	Be	Co	Cs	Ga	Hf	Nb	Rb	Sn	Sr	Ta	Th	U	V	W	Zr	Y	La	Ce	Pr
Unit		ppm	ppm	ppm	ppm	ppm	ppm	ppm	ppm	ppm	ppm	ppm	ppm	ppm	ppm	ppm	ppm	ppm	ppm	ppm	ppm
MDL		1	1	0.2	0.1	0.5	0.1	0.1	0.1	1	0.6	0.1	0.2	0.1	8	0.6	0.1	0.1	0.1	0.1	0.02
Pulp Duplicates																					
REE 282	Rock Pulp	928	<1	4.0	1.0	14.0	4.7	31.9	252.7	3	23.3	4.0	338.3	88.5	18	1.8	166.3	45.3	348.8	633.8	63.59
REP REE 282	QC	933	3	3.9	1.0	13.6	4.5	30.7	250.2	3	23.1	3.7	343.2	66.6	16	1.7	157.0	46.1	348.5	629.3	62.26
REE 299	Rock Pulp	831	1	4.7	1.0	13.7	6.6	38.2	238.0	4	22.0	4.4	358.3	85.9	<8	1.2	226.2	33.6	318.7	576.7	58.24
REP REE 299	QC	825	1	4.8	1.0	12.5	6.8	38.2	239.5	3	22.6	4.3	345.7	84.8	<8	2.0	224.9	32.6	321.7	584.2	58.09
REE 325	Rock Pulp	973	<1	14.5	0.9	13.5	6.4	43.0	226.8	3	33.1	4.7	282.7	52.3	31	2.8	236.1	43.8	338.2	586.2	57.19
REP REE 325	QC	890	<1	13.2	0.7	12.4	6.2	41.2	219.8	3	28.4	4.8	256.1	51.7	23	3.2	227.8	43.3	316.3	564.9	54.43
REE 328	Rock Pulp	357	<1	42.5	1.2	7.3	6.6	81.4	137.3	3	26.5	9.6	746.4	204.4	15	0.8	240.6	76.3	889.6	1544.4	155.04
REP REE 328	QC	354	2	43.1	1.0	7.1	6.7	80.7	138.9	3	25.9	9.8	756.4	204.1	14	1.3	231.8	76.4	901.4	1576.9	157.09
REE 335	Rock Pulp	315	<1	7.5	0.7	9.9	7.6	55.3	154.5	3	16.6	6.7	470.3	112.2	20	1.5	271.8	54.4	533.5	945.2	94.77
REP REE 335	QC	317	2	7.9	0.9	10.1	8.2	54.5	156.5	3	16.4	6.3	469.9	113.1	19	1.2	276.5	54.0	554.2	995.2	96.71
REE 361	Rock Pulp	834	8	24.2	4.3	22.3	3.0	29.9	200.3	4	43.4	2.3	36.7	14.3	87	0.9	97.1	167.7	747.1	956.8	79.06
REP REE 361	QC	854	11	24.3	4.4	22.5	2.9	29.5	200.5	3	44.1	2.7	36.6	14.0	61	1.0	97.3	168.1	759.5	966.0	80.79
REE 364	Rock Pulp	838	<1	4.3	0.3	3.4	4.6	49.4	162.9	<1	30.4	5.4	343.4	57.3	15	1.6	167.0	39.6	580.2	1081.8	112.37
REP REE 364	QC	821	<1	4.2	0.3	3.2	5.0	46.6	162.9	<1	30.5	5.5	336.1	56.9	10	2.7	170.0	37.9	599.1	1077.6	112.65
Reference Materials																					
STD SO-19	Standard	450	15	23.2	4.4	15.3	2.9	64.4	19.5	17	313.7	4.5	13.8	19.9	166	10.8	107.1	34.0	71.4	154.1	18.55
STD SO-19	Standard	462	15	23.0	4.1	15.2	2.9	66.3	19.0	17	317.7	4.8	13.7	19.5	166	8.5	109.1	35.8	71.3	150.5	18.66
STD SO-19	Standard	438	15	22.3	4.4	15.2	2.9	64.7	18.9	17	299.0	4.7	12.2	18.1	151	8.8	104.0	33.7	67.9	155.0	18.07
STD SO-19	Standard	441	17	22.0	4.2	15.0	2.9	66.2	19.3	18	304.5	4.8	13.4	19.7	156	10.1	105.9	33.9	69.5	155.0	18.47
STD SO-19	Standard	476	18	23.7	4.4	15.5	3.0	67.4	19.0	18	319.2	4.7	13.4	19.8	156	9.8	107.1	35.7	71.4	181.2	19.19
STD SO-19	Standard	439	14	22.1	4.3	16.0	3.1	64.4	16.5	17	306.5	4.7	13.9	19.4	166	8.9	106.3	32.1	69.9	145.2	17.64
STD SO-19	Standard	448	19	22.9	4.4	16.0	3.1	65.9	18.8	17	306.3	4.2	13.2	19.0	166	8.6	107.1	33.9	70.8	142.5	17.75
STD SO-19	Standard	472	17	24.3	4.6	16.0	3.1	71.2	20.0	18	315.4	5.1	13.6	20.5	183	9.5	110.9	34.8	71.4	159.6	19.59
STD SO-19	Standard	482	22	23.9	4.4	17.2	3.1	71.8	20.9	19	330.0	4.8	14.1	20.4	173	9.7	114.7	35.9	72.2	164.7	19.72
STD SO-19	Standard	463	16	23.9	4.4	16.8	3.0	66.8	20.4	18	326.4	4.9	13.4	19.5	162	10.6	111.8	36.6	73.2	156.4	19.26
STD SO-19	Standard	469	16	24.2	4.6	16.8	3.3	70.6	20.5	19	337.9	4.6	13.9	19.7	164	10.0	112.5	36.1	73.9	163.7	19.70
STD SO-19	Standard	449	9	22.7	4.4	15.2	2.9	65.4	16.6	18	311.3	4.4	12.0	19.2	154	9.8	108.4	33.6	70.3	152.5	18.00
STD SO-19	Standard	475	14	22.7	4.4	15.6	3.2	67.5	19.5	18	326.2	4.6	13.0	20.3	166	9.5	109.7	34.5	73.3	157.5	18.82

This report supersedes all previous preliminary and final reports with this file number dated prior to the date on this certificate. Signature indicates final approval. preliminary reports are unsigned and should be used for reference only.



Bureau Veritas Commodities Canada Ltd.
9050 Shaughnessy St Vancouver British Columbia V6P 6E5 Canada
PHONE (604) 253-3158

QUALITY CONTROL REPORT

VAN19001087.1

Table with columns: Method, Analyte, Unit, MDL, and 12 analyte columns (Nd, Sm, Eu, Gd, Tb, Dy, Ho, Er, Tm, Yb, Lu). Rows include Pulp Duplicates, Reference Materials, and various sample IDs (REE, REP) with their respective values.



Bureau Veritas Commodities Canada Ltd.

9050 Shaughnessy St Vancouver British Columbia V6P 6E5 Canada

PHONE (604) 253-3158

Client: Skead Holdings Ltd.
28 Ford St.
Sault Ste Marie Ontario P6A 4N4 Canada

Project: None Given
Report Date: June 28, 2019

Page 2 of 2

Part 1 of 2

QUALITY CONTROL REPORT

VAN19001087.1

		LF100	LF100	LF100	LF100	LF100	LF100	LF100	LF100	LF100	LF100	LF100	LF100	LF100	LF100	LF100	LF100	LF100	LF100	LF100	
		Ba	Be	Co	Ca	Ga	Hf	Nb	Rb	Sn	Sr	Ta	Th	U	V	W	Zr	Y	La	Ce	Pr
		ppm	ppm	ppm	ppm	ppm	ppm	ppm	ppm	ppm	ppm	ppm	ppm	ppm	ppm	ppm	ppm	ppm	ppm	ppm	ppm
		1	1	0.2	0.1	0.5	0.1	0.1	0.1	1	0.5	0.1	0.2	0.1	8	0.6	0.1	0.1	0.1	0.1	0.02
STD SO-19	Standard	452	12	22.2	4.5	15.7	3.0	87.4	18.9	18	321.3	4.8	13.2	20.3	151	9.3	108.7	34.2	68.9	156.9	18.64
STD SO-19	Standard	454	19	23.6	4.1	15.7	2.8	88.7	19.0	17	329.0	4.9	12.8	19.7	155	9.7	110.8	36.3	70.1	157.2	18.62
STD SO-19 Expected		486	20	24	4.5	17.5	3.1	88.5	19.5	19	317.1	4.9	13	19.4	165	9.8	112	35.5	71.3	181	19.4
BLK	Blank	1	<1	<0.2	<0.1	<0.5	<0.1	<0.1	0.3	<1	<0.5	<0.1	0.4	<0.1	<8	<0.5	0.3	<0.1	0.9	<0.1	<0.02
BLK	Blank	1	<1	<0.2	<0.1	<0.5	<0.1	<0.1	0.1	<1	<0.5	<0.1	0.3	<0.1	<8	<0.5	0.2	<0.1	0.1	<0.1	<0.02
BLK	Blank	1	<1	<0.2	<0.1	<0.5	<0.1	<0.1	0.3	<1	<0.5	<0.1	0.3	0.1	<8	<0.5	0.1	<0.1	0.2	0.3	<0.02
BLK	Blank	<1	<1	<0.2	<0.1	<0.5	<0.1	<0.1	<0.1	<1	<0.5	<0.1	<0.2	<0.1	<8	<0.5	<0.1	<0.1	<0.1	<0.1	<0.02
BLK	Blank	<1	<1	<0.2	<0.1	<0.5	<0.1	<0.1	<0.1	<1	<0.5	<0.1	<0.2	<0.1	<8	<0.5	<0.1	<0.1	<0.1	<0.1	<0.02
BLK	Blank	<1	<1	<0.2	<0.1	<0.5	<0.1	<0.1	<0.1	<1	<0.5	<0.1	<0.2	<0.1	<8	<0.5	0.7	<0.1	<0.1	<0.1	<0.02



Bureau Veritas Commodities Canada Ltd.
9050 Shaughnessy St Vancouver British Columbia V6P 6E5 Canada
PHONE (604) 253-3158

Client: Skead Holdings Ltd.
28 Ford St
Sault Ste Marie Ontario P6A 4N4 Canada

Project: None Given
Report Date: June 28, 2019

Page: 2 of 2

Part: 2 of 2

QUALITY CONTROL REPORT

VAN19001087.1

		LF100	LF100	LF100	LF100	LF100	LF100	LF100	LF100	LF100	LF100	LF100
		Nd	Sm	Eu	Gd	Tb	Dy	Ho	Er	Tm	Yb	Lu
		ppm	ppm	ppm	ppm	ppm	ppm	ppm	ppm	ppm	ppm	ppm
		0.3	0.06	0.02	0.06	0.01	0.06	0.02	0.03	0.01	0.06	0.01
STD SO-10	Standard	70.5	12.54	3.44	9.80	1.34	8.88	1.31	3.59	0.53	3.39	0.51
STD SO-10	Standard	72.8	12.93	3.50	9.98	1.38	7.17	1.29	3.59	0.51	3.47	0.52
STD SO-10 Expected		75.7	13.7	3.81	10.53	1.41	7.5	1.39	3.78	0.55	3.55	0.53
BLK	Blank	<0.3	<0.05	<0.02	<0.05	<0.01	<0.05	<0.02	<0.03	<0.01	<0.05	<0.01
BLK	Blank	<0.3	<0.05	<0.02	<0.05	<0.01	<0.05	<0.02	<0.03	<0.01	<0.05	<0.01
BLK	Blank	<0.3	<0.05	<0.02	<0.05	<0.01	<0.05	<0.02	<0.03	<0.01	<0.05	<0.01
BLK	Blank	<0.3	<0.05	<0.02	<0.05	<0.01	<0.05	<0.02	<0.03	<0.01	<0.05	<0.01
BLK	Blank	<0.3	<0.05	<0.02	<0.05	<0.01	<0.05	<0.02	<0.03	<0.01	<0.05	<0.01
BLK	Blank	<0.3	<0.05	<0.02	<0.05	<0.01	<0.05	<0.02	<0.03	<0.01	<0.05	<0.01



BUREAU MINERAL LABORATORIES
VERITAS

www.bureauveritas.com/um

Bureau Veritas Commodities Canada Ltd.
9050 Shaughnessy St Vancouver British Columbia V6P 6E5 Canada
PHONE (604) 253-3158

Client: **MacGregor, R.A.**
28 Ford St
Sault Ste Marie Ontario P6A 4N4 Canada

Submitted By: R.A MacGregor
Receiving Lab: Canada-Vancouver
Received: April 23, 2019
Report Date: April 25, 2019
Page: 1 of 2

CERTIFICATE OF ANALYSIS

VAN19000899.1

CLIENT JOB INFORMATION

Project: None Given
Shipment ID:
P.O. Number
Number of Samples: 24

SAMPLE PREPARATION AND ANALYTICAL PROCEDURES

Procedure Code	Number of Samples	Code Description	Test Wgt(g)	Report Status	Lab
SLBHP	24	Sorting, labelling and boxing samples received as pulps			VAN
MA200	24	4 Acid digestion ICP-MS analysis	0.25	Completed	VAN
EN001-MA	24	Environmental disposal fee - Multi-acid neutralization			VAN

SAMPLE DISPOSAL

IMM-PLP Return Immediately after analysis

ADDITIONAL COMMENTS

Bureau Veritas does not accept responsibility for samples left at the laboratory after 90 days without prior written instructions for sample storage or return.

Invoice To: **MacGregor, R.A.**
28 Ford St.
Sault Ste. Marie Ontario P6A 4N4
Canada

CC:


KERRY JAY
Customer Project Specialist

This report supersedes all previous preliminary and final reports with this file number dated prior to the date on this certificate. Signature indicates final approval, preliminary reports are unsigned and should be used for reference only. All results are considered the confidential property of the client. Bureau Veritas assumes the liabilities for actual cost of analysis only. Results apply to samples as submitted. * asterisk indicates that an analytical result could not be provided due to unusually high levels of interference from other elements.



Bureau Veritas Commodities Canada Ltd.
9050 Shaughnessy St Vancouver British Columbia V6P 6E5 Canada
PHONE (604) 253-3158

Client: MacGregor, R.A.
28 Ford St.
Sault Ste Marie Ontario P6A 4N4 Canada

Project: None Given
Report Date: April 25, 2019

CERTIFICATE OF ANALYSIS

VAN19000899.1

Table with columns: Method, Analyte, Unit, MDL, and 20 MA200 columns for various elements (Mo, Cu, Pb, Zn, Ag, Ni, Co, Mn, Fe, As, U, Th, Sr, Cd, Sb, Bi, V, Ca, P, La). Rows include sample IDs IMA2880 through IMA2903 with their respective pulp analysis results.



Bureau Veritas Commodities Canada Ltd.

9050 Shaughnessy St Vancouver British Columbia V6P 6E5 Canada
PHONE (604) 253-3158

Client: MacGregor, R.A.
28 Ford St.
Sault Ste Marie Ontario P6A 4N4 Canada

Project: None Given
Report Date: April 25, 2019

Page: 2 of 2 Part: 2 of 3

CERTIFICATE OF ANALYSIS

VAN19000899.1

Table with columns: Method, Analyte, Unit, MDL, and 20 elements (Cr, Mg, Ba, Ti, Al, Na, K, W, Zr, Ce, Sn, Y, Nb, Ta, Be, Sc, Li, S, Rb, Hf) with corresponding values for each sample (IMA2880 to IMA2903).



Bureau Veritas Commodities Canada Ltd.

9050 Shaughnessy St Vancouver British Columbia V6P 6E5 Canada
PHONE (604) 253-3158

Client: MacGregor, R.A.
28 Ford St.
Sault Ste Marie Ontario P6A 4N4 Canada

Project: None Given
Report Date: April 25, 2019

Page: 2 of 2

Part: 3 of 3

CERTIFICATE OF ANALYSIS

VAN19000899.1

Method	Analyte	MA200	MA200	MA200	MA200	MA200
		In	Re	Se	Te	Ti
Unit		ppm	ppm	ppm	ppm	ppm
MDL		0.05	0.005	1	0.5	0.5
IMA2880	Pulp	<0.05	<0.005	<1	<0.5	0.7
IMA2881	Pulp	<0.05	<0.005	<1	<0.5	0.8
IMA2882	Pulp	0.70	<0.005	3	<0.5	0.9
IMA2883	Pulp	0.28	<0.005	1	<0.5	0.8
IMA2884	Pulp	<0.05	<0.005	<1	<0.5	<0.5
IMA2885	Pulp	<0.05	<0.005	<1	<0.5	0.8
IMA2886	Pulp	<0.05	<0.005	<1	<0.5	0.8
IMA2887	Pulp	<0.05	<0.005	1	<0.5	0.8
IMA2888	Pulp	<0.05	<0.005	<1	<0.5	0.8
IMA2889	Pulp	<0.05	<0.005	<1	<0.5	0.7
IMA2890	Pulp	<0.05	<0.005	<1	<0.5	0.9
IMA2891	Pulp	<0.05	<0.005	<1	<0.5	0.9
IMA2892	Pulp	<0.05	<0.005	<1	<0.5	0.9
IMA2893	Pulp	<0.05	<0.005	<1	<0.5	0.8
IMA2894	Pulp	<0.05	<0.005	<1	<0.5	0.8
IMA2895	Pulp	<0.05	<0.005	<1	<0.5	0.9
IMA2896	Pulp	0.06	<0.005	<1	<0.5	0.9
IMA2897	Pulp	0.05	<0.005	<1	<0.5	0.9
IMA2898	Pulp	0.08	<0.005	<1	<0.5	0.8
IMA2899	Pulp	<0.05	<0.005	<1	<0.5	0.7
IMA2900	Pulp	<0.05	<0.005	<1	<0.5	0.7
IMA2901	Pulp	<0.05	<0.005	<1	<0.5	0.7
IMA2902	Pulp	<0.05	0.005	<1	<0.5	1.0
IMA2903	Pulp	<0.05	<0.005	<1	<0.5	1.2



Bureau Veritas Commodities Canada Ltd.
9050 Shaughnessy St Vancouver British Columbia V6P 6E5 Canada
PHONE (604) 253-3158

Client: MacGregor, R.A.
28 Ford St
Sault Ste. Marie Ontario P6A 4N4 Canada

Project: None Given
Report Date: April 25, 2019

Page: 1 of 1

Part: 1 of 3

QUALITY CONTROL REPORT

VAN19000899.1

Method	MA200	MA200	MA200	MA200	MA200	MA200	MA200	MA200	MA200	MA200	MA200	MA200	MA200	MA200	MA200	MA200	MA200	MA200	MA200	MA200	
Analyte	Mo	Cu	Pb	Zn	Ag	Ni	Co	Mn	Fe	As	U	Th	Sr	Cd	Sb	Bi	V	Ca	P	La	
Unit	ppm	ppm	ppm	ppm	ppm	ppm	ppm	ppm	%	ppm	ppm	ppm	ppm	ppm	ppm	ppm	ppm	%	%	ppm	
MDL	0.1	0.1	0.1	1	0.1	0.1	0.2	1	0.01	1	0.1	0.1	1	0.1	0.1	0.1	1	0.01	0.001	0.1	
Pulp Duplicates																					
IMA2898	Pulp	1.9	285.3	28.3	3	0.2	5.1	8.3	78	0.74	6	80.0	354.8	21	<0.1	0.2	0.2	11	0.08	0.039	427.8
REP IMA2898	QC	2.0	282.0	27.4	3	0.2	5.5	8.2	84	0.71	7	59.2	342.0	21	<0.1	0.1	0.2	11	0.08	0.043	423.5
Reference Materials																					
STD OREAS25A-4A	Standard	2.3	32.9	23.4	41	<0.1	41.9	7.4	443	8.20	9	2.5	13.8	44	<0.1	0.8	0.4	148	0.28	0.042	21.8
STD OREAS45E	Standard	2.5	780.0	17.3	48	0.3	483.8	59.5	547	23.59	15	2.1	13.5	18	<0.1	0.9	0.3	309	0.06	0.034	8.8
STD OREAS25A-4A Expected		2.41	33.9	25.2	44.4		45.8	7.7	480	8.8	9.94	2.94	15.8	48.5		0.85	0.37	157	0.301	0.048	21.8
STD OREAS45E Expected		2.4	780	18.2	48.7	0.311	454	57	570	24.12	18.3	2.41	12.9	15.9	0.08	1	0.28	322	0.085	0.034	11
BLK	Blank	<0.1	0.1	<0.1	<1	<0.1	0.2	<0.2	3	<0.01	<1	<0.1	<0.1	<1	<0.1	<0.1	<0.1	<1	<0.01	<0.001	<0.1



BUREAU MINERAL LABORATORIES
VERITAS

www.bureauveritas.com/um

Bureau Veritas Commodities Canada Ltd.
9050 Shaughnessy St Vancouver British Columbia V6P 6E5 Canada
PHONE (604) 253-3158

Client: MacGregor, R.A.
28 Ford St.
Sault Ste Marie Ontario P6A 4N4 Canada

Project: None Given
Report Date: April 25, 2019

Page: 1 of 1

Part: 2 of 3

QUALITY CONTROL REPORT

VAN19000899.1

Method	Analyte	MA200	MA200	MA200	MA200	MA200	MA200	MA200	MA200	MA200	MA200	MA200	MA200	MA200	MA200	MA200	MA200	MA200	MA200	MA200	MA200
		Cr	Mg	Ba	Tl	Al	Na	K	W	Zr	Ce	Sn	Y	Nb	Ta	Be	Sc	Li	S	Rb	Hf
Unit		ppm	%	ppm	%	%	%	%	ppm	ppm	ppm	ppm	ppm	ppm	ppm	ppm	ppm	%	ppm	ppm	
MDL		1	0.01	1	0.001	0.01	0.001	0.01	0.1	0.1	1	0.1	0.1	0.1	0.1	1	1	0.1	0.1	0.1	
Pulp Duplicates																					
IMA2898	Pulp	103	0.13	664	0.158	3.46	0.058	4.07	0.8	131.4	757	1.4	33.3	18.4	1.9	<1	2	5.1	0.1	171.8	3.8
REP IMA2898	QC	91	0.13	709	0.162	3.48	0.060	3.98	0.6	133.8	791	1.4	33.4	18.2	1.8	<1	2	5.7	<0.1	177.2	3.8
Reference Materials																					
STD OREAS25A-4A	Standard	105	0.32	137	0.870	8.93	0.114	0.44	2.0	148.1	48	4.1	10.3	19.2	1.3	<1	12	33.9	<0.1	59.8	4.1
STD OREAS45E	Standard	1000	0.16	240	0.541	6.90	0.054	0.33	1.0	94.9	23	1.2	7.5	8.1	0.5	<1	89	6.2	<0.1	21.0	2.7
STD OREAS25A-4A Expected		115	0.327	147	0.93	8.87	0.131	0.482	2	155	47.3	4.08	10.5	20.9	1.4	0.93	13.7	36.7	0.047	81	4.14
STD OREAS45E Expected		979	0.156	252	0.559	6.78	0.059	0.324	1.07	97	23.5	1.32	8.28	6.8	0.54		93	6.58	0.046	21.2	3.11
BLK	Blank	5	<0.01	<1	<0.001	<0.01	<0.001	<0.01	<0.1	<0.1	<1	<0.1	<0.1	<0.1	<0.1	<1	<1	<0.1	<0.1	0.2	<0.1



Bureau Veritas Commodities Canada Ltd.
9050 Shaughnessy St Vancouver British Columbia V6P 6E5 Canada
PHONE (604) 253-3158

Client: MacGregor, R.A.
28 Ford St
Sault Ste Marie Ontario P6A 4N4 Canada

Project: None Given
Report Date: April 25, 2019

Page: 1 of 1

Part: 3 of 3

QUALITY CONTROL REPORT

VAN19000899.1

Table with columns: Method, Analyte, Unit, MDL, MA200 In, MA200 Re, MA200 Se, MA200 Te, MA200 Tl. Rows include Pulp Duplicates, IMA2898, REP IMA2898, Reference Materials (STD OREAS25A-4A, STD OREAS45E, STD OREAS25A-4A Expected, STD OREAS45E Expected), and BLK.

Costs

Sample Prep	46 samples @ \$8/sample	368	
	Over 2 years		184
Shipping	Sept. 19/18 Ont. Northland	30.05	
	Pickup & store 1 hr @ \$50/hr	50	
	Over 2 years		80.05
	April 16/19 2 hrs @ \$50/hr		100
	Postage		26.28
	June 12/19 3 hrs @ \$50/hr		150
	Postage		21.55
	May 13/19 4 hrs @ \$50/hr		200
	Purolater		55.01
Analysis	IMA 46 samples @ 21.55/sample	991.30	
	REE 43 samples @ 32.30/sample	1356.60	
			2348
Report	March 25/21		500
		Total	3615