

We are committed to providing [accessible customer service](#).

If you need accessible formats or communications supports, please [contact us](#).

Nous tenons à améliorer [l'accessibilité des services à la clientèle](#).

Si vous avez besoin de formats accessibles ou d'aide à la communication, veuillez [nous contacter](#).

Assessment Report on the 2019 Prospecting Program

on our claims in Dundonald Township:

Cell claims # 114664, 114665, 145201, 145202, 158760, 239227, 327247 331781; and

Boundary claim #203916



Prepared by:

Michael Scott Woolhead

Woolhead Exploration

305 Corporation Street,

Porcupine, Ontario.

PON 1C0

May 24th, 2019

The Dundonald township claims were originally physically staked due to their proximity to the Alexo mine located 100 metres south of the south boundary of these claims. Further research showed previous drilling on these claims that demonstrated positive results.

An initial prospecting survey was completed on the 16th of May 2019. It was completed by two persons, Scott Woolhead and his helper, Kathleen Woolhead. Their trek first located four trenches on the western boundary line that were noted on the day when this property was staked but not explored at that time.

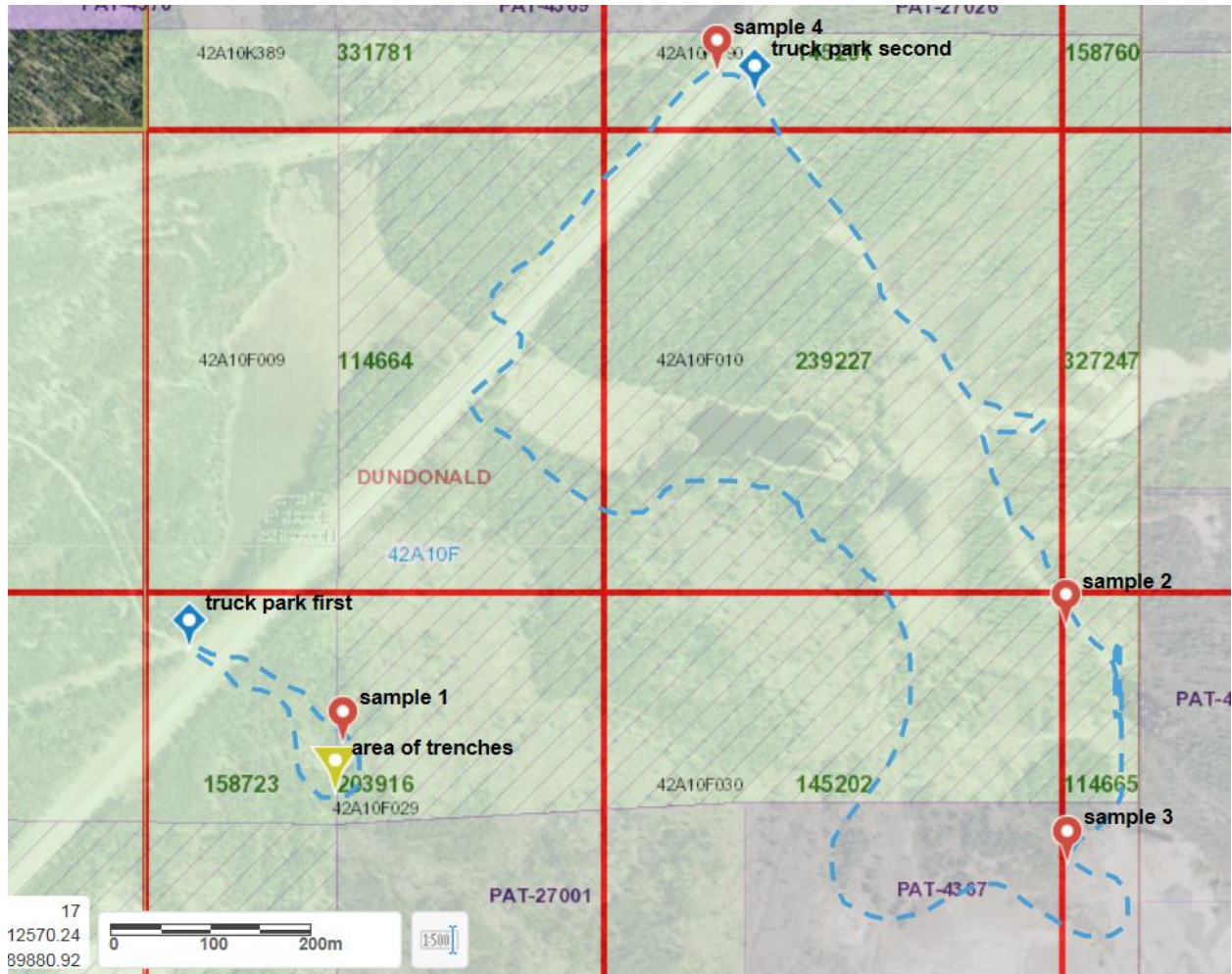
The Alexo mine was situated on a outcrop that arises from the surrounding terrain like a hulking behemoth that arises out of the ground. The open pit itself lies at the foot of an approximately forty (40) metre high outcrop. Our prospecting mission was to traverse the claim in an attempt to locate a similar rise in the topography. Unfortunately our trek was unable to find such an event. To the west of the beaver pond in the midst of our claims there are large pickup size and smaller boulders that were deposited in eons past. To the east of the pond there are virtually no rocks or boulders on surface. To the north across the highway there are boulders similar to those found on the east.

The trenches located along the south-western boundary line are sometimes as deep as four metres and I suspect were dug by the outfit which runs the gravel pit to the west, as the trenches don't reach any bedrock and instead give an indication of the quality of the sand and/or gravel located in this area.

This property also has generally deep depressions probably formed by the vestiges of ice trapped under the sand and detris left by retreating glaciers. Upon melting the depressions were left in place.

Only four (4) samples were taken during the day of prospecting as the outcrop was not just very limited, but non-existent. One sample was taken from a float; two others were taken from waste ore at some time deposited on our claim from the Alexo mine; and a fourth soil sample was taken from a stream outflow at the end of a beaver pond. (See pics below.) The samples will be held and sent for analysis, after a second prospecting journey happens to the north and west in a new claim that was staked a month ago.

The following map shows the two separate treks we made during the day, as well as sample collection. A second map follows the four pictures of samples taken during the day.





The first sample was taken from a pickup sized "float". (17) 513085, 5389826.



Sample two was taken from stream sediment. (17) 513811, 5389945.

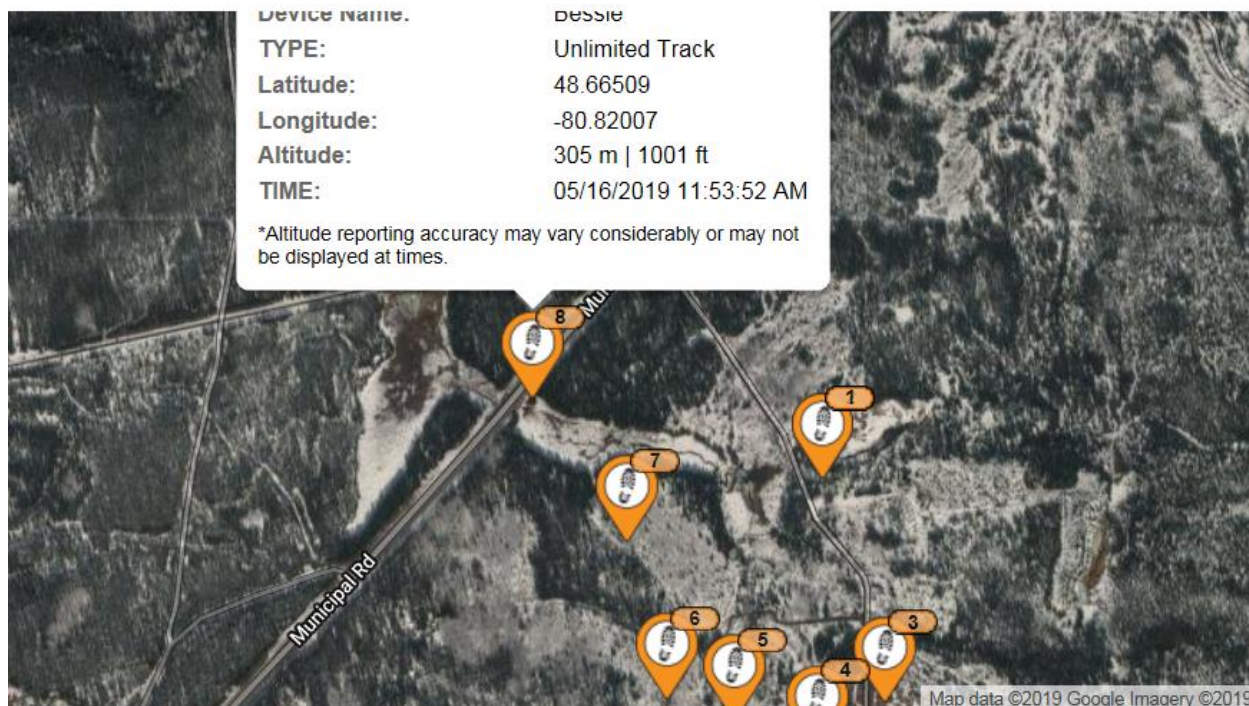


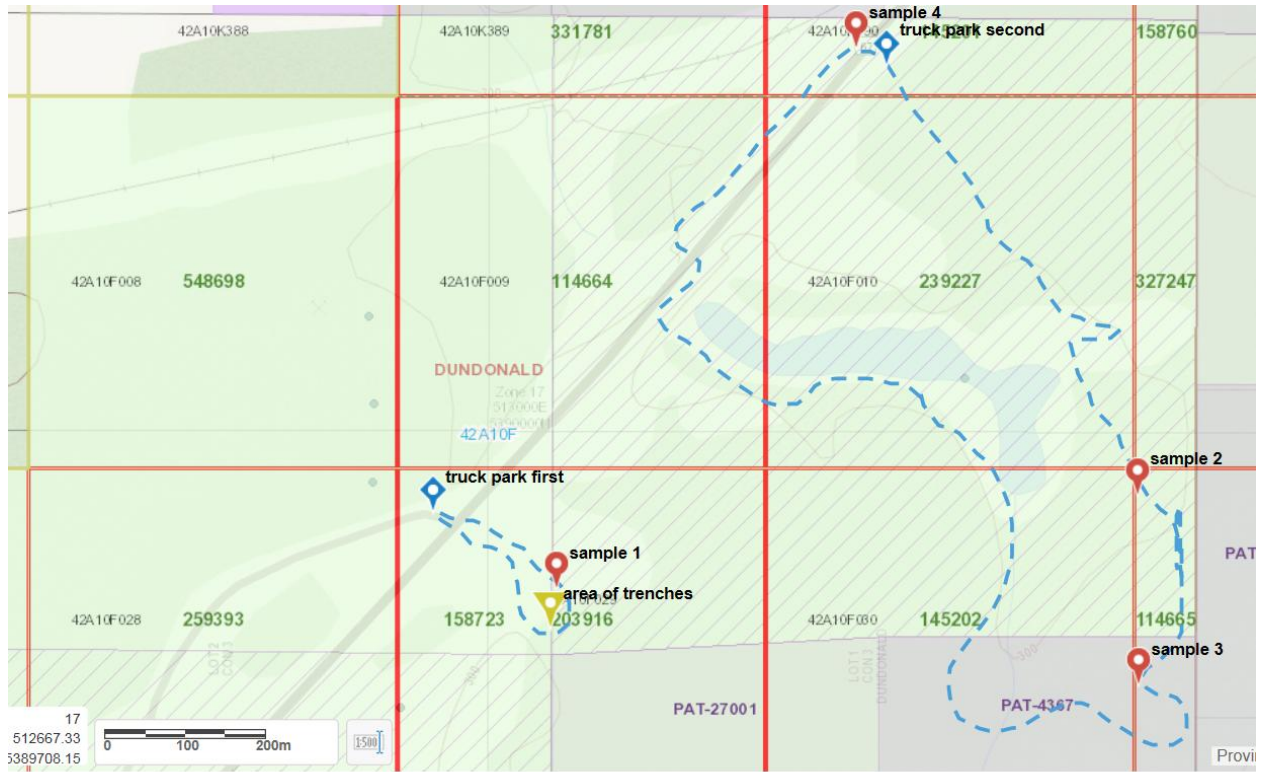
Sample 3 was taken from a rock obviously pulled from the Alexo mine to the south and used as fill on the roadway into our claim (and is part of the access to the mine from the highway which bisects our property. (17) 513817, 5389707.



The fourth and last sample was from a dump of waste mine material but was still full of sulphides. (17) 513458, 539049.

The following picture gives a partial overview of our trek during the 16th of May.





This ends this report.

Sincerely,

Scott Woolhead, B.A.